



MAPA INDICE
 —15 Num. Indice
 2008

Secretaría de Comunicaciones y Transportes

12 GUERRERO

CARRETERAS AFORADAS

Num. INDICE	CARRETERA
1	LAS CRUCES - PINOTEPA NACIONAL
2	ZIHUATANEJO - LA MIRA
3	ACAPULCO - AEROPUERTO ACAPULCO
4	ACAPULCO - ZIHUATANEJO
5	CD. ALTAMIRANO - T. C. (ZIHUATANEJO - LA MIRA)
6	CHILPANCINGO - ACAPULCO
7	CHILPANCINGO - JILOTEPEC
8	CHILPANCINGO - CHICHIHUALCO
9	T. C. (IGUALA - CHILPANCINGO) - ATENANGO DEL RIO
10	ENT. POTRERO - LOMAS DE CHAPULTEPEC
11	MILPILLAS - T. C. (ACAPULCO - ZIHUATANEJO)
12	IGUALA - CD. ALTAMIRANO
13	LA SABANA - PUERTO MARQUES
14	LIBRAMIENTO NORTE DE ACAPULCO
15	PIE DE LA CUESTA - BARRA DE COYUCA
16	RAMAL A AEROPUERTO ZIHUATANEJO
17	RAMAL A COCULA
18	SAN JUAN DE LOS LLANOS - OMETEPEC
19	TAXCO - IXCATEOPAN
20	TEOLOAPAN - APAXTLA DE CASTREJON
21	TIERRA COLORADA - CRUZ GRANDE
22	ZACAPALCO - TAXCO (CUOTA)
23	CUERNAVACA - ACAPULCO (CUOTA)
24	CUERNAVACA - CHILPANCINGO
25	ENT. ALPUYECA - GRUTAS DE CACAHUAMILPA
26	ENT. URUAPAN - LAZARO CARDENAS (CUOTA)
27	PUENTE DE IXTLA - IGUALA (CUOTA)
28	TOLUCA - AXIXINTLA
29	TOLUCA - CD. ALTAMIRANO

GUERRERO

1 CARR : LAS CRUCES - PINOTEPA NACIONAL

CLAVE: 00073

RUTA : MEX-200

AÑO : 2007

L U G A R	E S T A C I O N				C L A S I F I C A C I O N V E H I C U L A R E N P O R C I E N T O .												
	KM	TE	SC	TDPA	A	B	C2	C3	T3S2	T3S3	T3S2R4	OTROS	A	B	C	K'	D
T. C. CHILPANCINGO - ACAPULCO	0.00	3	1	13835	81.8	6.2	2.6	2.8	2.3	2.7	0.4	1.2	81.8	6.2	12	0.103	0.52
T. C. CHILPANCINGO - ACAPULCO	0.00	3	2	12776	82	6.2	2	2.9	2.6	2.7	0.3	1.3	82	6.2	11.8	0.092	0.52
T. DER. PUERTO MARQUES	4.62	1	1	17090	71.7	5	1.1	0.9	5.4	2.6	8.6	4.7	71.7	5	23.3	0.07	0.5
T. DER. PUERTO MARQUES	4.62	1	2	17097	73.8	5	1.1	0.7	6.1	2.5	5.2	5.6	73.8	5	21.2	0.074	0.5
T. DER. PUERTO MARQUES	4.62	3	0	8458	81.5	6	1	0.8	3.3	2.8	1.3	3.3	81.5	6	12.5	0.072	0.508
SAN MARCOS	58.90	1	0	7242	86	3.7	1.8	1.5	2.4	2.2	0.5	1.9	86	3.7	10.3	0.097	0.502
NEXPA	84.96	3	0	7598	78.1	3.1	2.1	1.8	6.3	1.9	4.3	2.4	78.1	3.1	18.8	0.073	0.503
T. IZQ. COPALA (1° ACCESO)	117.50	1	0	3695	82.2	5.7	4.6	1.5	3	1	0.9	1.1	82.2	5.7	12.1	0.087	0.502
T. IZQ. COPALA (1° ACCESO)	117.50	3	0	4565	83.4	5.2	3.3	2	3.4	0.8	0.9	1	83.4	5.2	11.4	0.086	0.504
T. IZQ. OMETEPEC	175.90	1	0	3097	79.8	5	4.4	3.5	2.2	2.5	0.9	1.7	79.8	5	15.2	0.109	0.505
CUAJINICUILAPA	200.60	3	0	3964	84.1	3.7	1.7	1.9	4.3	1.1	1.7	1.5	84.1	3.7	12.2	0.093	0.501
LIM. EDOS. TERM. GRO. PPIA. OAX.	210.00	0	0														
T. IZQ. SAN PEDRO ORIZABA	215.00	3	0	1425	84	2.2	2.7	4.9	2.5	1.4	1.5	0.8	84	2.2	13.8	0.086	0.5
T. IZQ. TLAXIACO	245.50	1	0	1837	87.3	1.4	3.2	2.8	2.4	1.9	0.1	0.9	87.3	1.4	11.3	0.093	0.506
T. IZQ. TLAXIACO	245.50	3	0	3886	87.5	2.2	1.1	1.4	3.1	1	1.8	1.9	87.5	2.2	10.3	0.091	0.507
PINOTEPA NACIONAL	252.50	0	0														

2 CARR : ZIHUATANEJO - LA MIRA

CLAVE: 00121

RUTA : MEX-200

AÑO : 2007

L U G A R	E S T A C I O N				C L A S I F I C A C I O N V E H I C U L A R E N P O R C I E N T O .												
	KM	TE	SC	TDPA	A	B	C2	C3	T3S2	T3S3	T3S2R4	OTROS	A	B	C	K'	D
ZIHUATANEJO	0.00	3	1	9644	70.6	3.5	0.8	1.1	5.8	3.9	9.2	5.1	70.6	3.5	25.9	0.074	0.501
ZIHUATANEJO	0.00	3	2	9698	70	3.7	0.9	1.2	5.8	3.9	9.4	5.1	70	3.7	26.3	0.074	0.501
T. IZQ. IXTAPA ZIHUATANEJO	8.00	3	0	12348	84.6	4.7	2.7	0.2	2.7	2.6	0.4	2.1	84.6	4.7	10.7	0.076	0.5
T. DER. CD. ALTAMIRANO	16.30	1	0	5155	81.6	6.2	2.7	1.4	3.6	1.3	1.7	1.5	81.6	6.2	12.2	0.089	0.509
T. DER. CD. ALTAMIRANO	16.30	3	0	4695	81.1	5.3	3.4	1.6	3.8	1.4	1.8	1.6	81.1	5.3	13.6	0.088	0.509
T. DER. LA UNION	52.00	3	0	3644	80.3	5.2	3.6	1.7	4	1.6	1.9	1.7	80.3	5.2	14.5	0.086	0.507
ZACATULA	93.50	1	0	4031	81.2	5.6	3.2	1.6	3.7	1.5	1.7	1.5	81.2	5.6	13.2	0.089	0.508
LIM. EDOS. TERM. GRO. PPIA. MICH.	98.50	0	0														
LA VILLITA	103.80	3	0	3993	80.4	8.3	4.4	2.5	1	2	0.1	1.3	80.4	8.3	11.3	0.081	0.501
GUACAMAYAS	107.00	1	1	12568	82.7	5.4	5.4	1.4	1.9	1.9	0.2	1.1	82.7	5.4	11.9	0.097	0.503
GUACAMAYAS	107.00	1	2	12412	82.7	6	5.3	1.6	1.5	2	0.2	0.7	82.7	6	11.3	0.087	0.503
T. IZQ. LAZARO CARDENAS	110.90	1	1	14794	91.2	4	0.6	0.2	1.5	0.6	0.6	1.3	91.2	4	4.8	0.069	0.541
T. IZQ. LAZARO CARDENAS	110.90	1	2	12574	90.5	4	1.7	0.1	1.4	0.5	0.5	1.3	90.5	4	5.5	0.074	0.541
LA MIRA	119.50	1	1	5303	84.7	2.9	4.5	3.2	1.4	1.6	0.1	1.6	84.7	2.9	12.4	0.091	0.5

GUERRERO

2 CARR : ZIHUATANEJO - LA MIRA

CLAVE: 00121

RUTA : MEX-200

AÑO : 2007

L U G A R	E S T A C I O N				C L A S I F I C A C I O N V E H I C U L A R E N P O R C I E N T O .												
	KM	TE	SC	TDPA	A	B	C2	C3	T3S2	T3S3	T3S2R4	OTROS	A	B	C	K'	D
LA MIRA	119.50	1	2	5300	84.6	2.9	5	2	1.5	2	0.2	1.8	84.6	2.9	12.5	0.099	0.5

3 CARR : ACAPULCO - AEROPUERTO ACAPULCO

CLAVE: 12292

RUTA : GRO

AÑO : 2007

L U G A R	E S T A C I O N				C L A S I F I C A C I O N V E H I C U L A R E N P O R C I E N T O .												
	KM	TE	SC	TDPA	A	B	C2	C3	T3S2	T3S3	T3S2R4	OTROS	A	B	C	K'	D
ACAPULCO	0.00	0	0														
PUERTO MARQUES	8.70	1	1	11424	87.3	3	0.9	0.7	1.9	1.9	1.4	2.9	87.3	3	9.7	0.076	0.514
PUERTO MARQUES	8.70	1	2	10812	84.8	3	0.7	0.8	2.7	3.2	1.5	3.3	84.8	3	12.2	0.087	0.514
PUERTO MARQUES	8.70	3	1	8037	89.9	1.6	0.9	0.7	2.4	2.3	0.6	1.6	89.9	1.6	8.5	0.09	0.515
PUERTO MARQUES	8.70	3	2	7579	90.1	1.7	0.9	0.8	2.2	2.3	0.5	1.5	90.1	1.7	8.2	0.078	0.515
T. DER. LOS AMATES	14.90	3	1	3852	87.9	2.4	5.1	1.3	1.6	0.3	0.3	1.1	87.9	2.4	9.7	0.075	0.5
T. DER. LOS AMATES	14.90	3	2	3853	88	2.2	5.4	1	1.7	0.3	0.2	1.2	88	2.2	9.8	0.073	0.5
AEROPUERTO	16.20	0	0														

4 CARR : ACAPULCO - ZIHUATANEJO

CLAVE: 12072

RUTA : MEX-200

AÑO : 2007

L U G A R	E S T A C I O N				C L A S I F I C A C I O N V E H I C U L A R E N P O R C I E N T O .												
	KM	TE	SC	TDPA	A	B	C2	C3	T3S2	T3S3	T3S2R4	OTROS	A	B	C	K'	D
ACAPULCO	0.00	0	0														
T. IZQ. PIE DE LA CUESTA	10.37	1	0	16620	78.7	5.2	6.4	2.7	2.9	2.7	1	0.4	78.7	5.2	16.1	0.078	0.504
T. IZQ. PIE DE LA CUESTA	10.37	3	0	15508	79	4.7	6.4	2.9	3.1	2.6	1	0.3	79	4.7	16.3	0.072	0.503
T. DER. LIBRAMIENTO DE ACAPULCO	21.37	3	0	7759	80.6	4.4	2.4	1.7	4.2	2.3	2.3	2.1	80.6	4.4	15	0.074	0.5
COYUCA DE BENITEZ	33.60	3	0	6129	76.3	5	6.2	2.2	2.7	1.4	1.9	4.3	76.3	5	18.7	0.078	0.501
T. DER. ATOYAC DE ALVAREZ	77.85	3	0	9844	84.3	3.4	1.6	1.2	4.7	1.4	1.8	1.6	84.3	3.4	12.3	0.076	0.5
TECPAN DE GALEANA	103.60	1	0	4789	81.2	5.4	1.5	2.3	4.2	1.9	1.5	2	81.2	5.4	13.4	0.087	0.5
TECPAN DE GALEANA	103.60	3	0	4975	84.2	5.4	1.5	2.3	2.5	1.8	0.9	1.4	84.2	5.4	10.4	0.086	0.5
PAPANOA	162.30	1	0	4196	83.1	3.8	3.5	2.4	2.7	1.8	1.8	0.9	83.1	3.8	13.1	0.066	0.501
PETATLAN	206.30	1	0	4700	85.6	4.4	1.8	2.2	2.1	1.6	0.9	1.4	85.6	4.4	10	0.077	0.501
ZIHUATANEJO	242.90	1	1	8021	78.4	4.2	5.3	1.2	2.1	0.8	1.3	6.7	78.4	4.2	17.4	0.077	0.5
ZIHUATANEJO	242.90	1	2	8019	83.7	3.9	2.7	1.2	3.1	1	1.8	2.6	83.7	3.9	12.4	0.075	0.5

GUERRERO

5 CARR : CD. ALTAMIRANO - T. C. (ZIHUATANEJO - LA MIRA)

CLAVE: 12422

RUTA : MEX-134

AÑO : 2007

L U G A R	E S T A C I O N				C L A S I F I C A C I O N V E H I C U L A R E N P O R C I E N T O .												
	KM	TE	SC	TDPA	A	B	C2	C3	T3S2	T3S3	T3S2R4	OTROS	A	B	C	K'	D
CD. ALTAMIRANO	0.00	3	0	7132	85.1	5.8	5.7	2.3	0.3	0.5	0.3	0	85.1	5.8	9.1	0.089	0.5
T. DER. ZIRANDARO	15.00	3	0	2724	86.9	4.4	4.9	1.3	1.1	1	0.3	0.1	86.9	4.4	8.7	0.098	0.505
T. C. ZIHUATANEJO - LA MIRA	185.30	1	0	953	78.1	12.5	4.6	2.4	1.5	0.6	0.1	0.2	78.1	12.5	9.4	0.066	0.502

6 CARR : CHILPANCINGO - ACAPULCO

CLAVE: 12045

RUTA : MEX-095

AÑO : 2007

L U G A R	E S T A C I O N				C L A S I F I C A C I O N V E H I C U L A R E N P O R C I E N T O .												
	KM	TE	SC	TDPA	A	B	C2	C3	T3S2	T3S3	T3S2R4	OTROS	A	B	C	K'	D
CHILPANCINGO	0.00	0	0														
T. C. CUERNAVACA - ACAPULCO (CUOTA)	4.20	1	1	13515	80.1	4.3	3.2	2.7	3.7	1.4	1.7	2.9	80.1	4.3	15.6	0.12	0.503
T. C. CUERNAVACA - ACAPULCO (CUOTA)	4.20	1	2	13666	82.1	4.3	3.2	1.8	4.2	1.3	1.2	1.9	82.1	4.3	13.6	0.061	0.503
T. C. CUERNAVACA - ACAPULCO (CUOTA)	4.20	3	0	16781	79.5	3.1	2.8	2.3	4.8	2.6	1.5	3.4	79.5	3.1	17.4	0.099	0.504
PETAQUILLAS	12.01	1	0	13131	84.2	4.9	1.9	2	3.8	1.1	0.6	1.5	84.2	4.9	10.9	0.088	0.502
PETAQUILLAS	12.01	3	0	11153	77.5	5.2	2.9	4.1	3.5	3.5	1.7	1.6	77.5	5.2	17.3	0.087	0.512
EL OCOTITO	50.68	1	0	7520	78.4	7.6	5.1	3.7	1.6	1.5	0.9	1.2	78.4	7.6	14	0.074	0.503
EL OCOTITO	50.68	3	0	7951	76.6	8.2	6.2	3.7	1.7	1.9	0	1.7	76.6	8.2	15.2	0.089	0.504
T. IZQ. TIERRA COLORADA INICIA	61.18	1	0	6486	70.4	12.6	4.2	5	3	1.7	0	3.1	70.4	12.6	17	0.095	0.501
T. IZQ. TIERRA COLORADA TERMINA	65.14	3	0	8452	78.9	6	2.2	3	4.8	2.1	1.5	1.5	78.9	6	15.1	0.08	0.507
X. C. CUERNAVACA - ACAPULCO (CUOTA)	70.10	3	0	9066	79.6	4.2	2.2	2.6	4.7	3	2.1	1.6	79.6	4.2	16.2	0.065	0.501
T. DER. PABLO GALEANA	88.15	3	0	12070	80	6	4.3	3.8	1.4	1.6	1.2	1.7	80	6	14	0.062	0.503
T. DER. LIBRAMIENTO NORTE DE ACAPULCO	112.80	1	0	11505	82.4	5.3	1.9	1.4	2.8	3.1	1.3	1.8	82.4	5.3	12.3	0.078	0.501
T. DER. LIBRAMIENTO NORTE DE ACAPULCO	112.80	3	0	13272	82.6	6	2.6	2	2.3	2.6	0.9	1	82.6	6	11.4	0.093	0.506
ACAPULCO	132.70	0	0														

7 CARR : CHILPANCINGO - JILOTEPEC

CLAVE: 12002

RUTA : MEX-092

AÑO : 2007

L U G A R	E S T A C I O N				C L A S I F I C A C I O N V E H I C U L A R E N P O R C I E N T O .												
	KM	TE	SC	TDPA	A	B	C2	C3	T3S2	T3S3	T3S2R4	OTROS	A	B	C	K'	D
CHILPANCINGO	0.00	3	0	5026	85.4	3.1	1.4	1	3	1.6	2	2.5	85.4	3.1	11.5	0.088	0.502
T. DER. TIXTLA DE GUERRERO	16.30	3	0	4592	81	5.5	2.5	1	4.8	1.3	1.9	2	81	5.5	13.5	0.092	0.501
T. IZQ. ALMOLONGA	28.20	3	0	2936	84.1	7.4	2.3	1.6	1.5	1.4	0.5	1.2	84.1	7.4	8.5	0.094	0.511
CHILAPA DE ALVAREZ	53.62	3	0	4388	84.7	4.3	1.6	0.8	4.3	1	1.6	1.7	84.7	4.3	11	0.082	0.501
TLAPA DE COMONFORT	178.50	1	0	1964	78.9	6.9	3.2	3.6	2.3	2.4	1.5	1.2	78.9	6.9	14.2	0.115	0.505
HUAMUXTITLAN	200.60	1	0	1770	71.4	7.3	5.3	3.7	2.8	2.4	2.5	4.6	71.4	7.3	21.3	0.102	0.501
XOCHIHUEHUETLAN	216.80	1	0	1793	76.1	7.8	4.8	3.2	2.5	1.4	1.9	2.3	76.1	7.8	16.1	0.103	0.505

GUERRERO

7 CARR : CHILPANCINGO - JILOTEPEC

CLAVE: 12002

RUTA : MEX-092

AÑO : 2007

L U G A R	E S T A C I O N				C L A S I F I C A C I O N V E H I C U L A R E N P O R C I E N T O .												
	KM	TE	SC	TDPA	A	B	C2	C3	T3S2	T3S3	T3S2R4	OTROS	A	B	C	K'	D
JILOTEPEC	235.00	1	0	1461	81.5	8.5	3.7	2.5	1.2	0.8	0.6	1.2	81.5	8.5	10	0.099	0.503

8 CARR : CHILPANCINGO - CHICHIHUALCO

CLAVE: 12426

RUTA : MEX-196

AÑO : 2007

L U G A R	E S T A C I O N				C L A S I F I C A C I O N V E H I C U L A R E N P O R C I E N T O .												
	KM	TE	SC	TDPA	A	B	C2	C3	T3S2	T3S3	T3S2R4	OTROS	A	B	C	K'	D
T. C. CUERNAVACA - CHILPANCINGO	0.00	3	0	1773	90.5	2.7	3.6	1.4	0.1	0.6	0	1.1	90.5	2.7	6.8	0.103	0.502
T. DER. EL PALMAR	15.10	1	0	1622	88.4	2.4	3	2.1	0.4	1	0	2.7	88.4	2.4	9.2	0.1	0.514
CHICHIHUALCO	26.30	1	0	776	91	1.3	2.9	2.4	0	0.3	0	2.1	91	1.3	7.7	0.093	0.502

9 CARR : T. C. (IGUALA - CHILPANCINGO) - ATENANGO DEL RIO

CLAVE: 12001

RUTA : GRO-001

AÑO : 2007

L U G A R	E S T A C I O N				C L A S I F I C A C I O N V E H I C U L A R E N P O R C I E N T O .												
	KM	TE	SC	TDPA	A	B	C2	C3	T3S2	T3S3	T3S2R4	OTROS	A	B	C	K'	D
T. C. CUERNAVACA - CHILPANCINGO	0.00	3	0	4827	89.1	4.2	1	0.5	2.8	0.4	0.6	1.4	89.1	4.2	6.7	0.092	0.504
T. DER. POLOLCINGO	11.20	1	0	2638	89.9	3.8	1.7	0.8	1.3	0.5	0.4	1.6	89.9	3.8	6.3	0.098	0.516
T. DER. POLOLCINGO	11.20	3	0	3306	80	5.3	2.9	2.2	2.4	2.8	1	3.4	80	5.3	14.7	0.102	0.542
HUITZUCO	22.00	3	0	3024	87.7	2.2	4.7	1.6	2.1	0.3	0.3	1.1	87.7	2.2	10.1	0.094	0.503
ATENANGO DEL RIO	62.00	1	0	605	84.8	2.6	6.2	2.6	1.4	1.7	0.3	0.4	84.8	2.6	12.6	0.088	0.506

10 CARR : ENT. POTRERO - LOMAS DE CHAPULTEPEC

CLAVE: 12293

RUTA : GRO

AÑO : 2007

L U G A R	E S T A C I O N				C L A S I F I C A C I O N V E H I C U L A R E N P O R C I E N T O .												
	KM	TE	SC	TDPA	A	B	C2	C3	T3S2	T3S3	T3S2R4	OTROS	A	B	C	K'	D
T. C. ACAPULCO - AEROPUERTO ACAPULCO	0.00	3	0	8510	85.6	2.8	1.3	3.6	2.1	2.3	0.5	1.8	85.6	2.8	11.6	0.114	0.505
T. C. LAS CRUCES - PINOTEPA NACIONAL	29.00	0	0														

11 CARR : MILPILLAS - T. C. (ACAPULCO - ZIHUATANEJO)

CLAVE: 12012

RUTA : MEX-196

AÑO : 2007

L U G A R	E S T A C I O N				C L A S I F I C A C I O N V E H I C U L A R E N P O R C I E N T O .												
	KM	TE	SC	TDPA	A	B	C2	C3	T3S2	T3S3	T3S2R4	OTROS	A	B	C	K'	D
T. C. CUERNAVACA - CHILPANCINGO	0.00	3	0	1069	91.8	3.6	2.2	0.6	0.5	0.4	0.3	0.6	91.8	3.6	4.6	0.061	0.502
LOS MORROS	45.07	1	0	665	85.9	6.8	1.3	1.7	1.5	0.6	1.1	1.1	85.9	6.8	7.3	0.069	0.509
ATOYAC DE ALVAREZ	233.50	1	0	8524	80.5	8.1	2.8	1.2	2.6	0.8	1	3	80.5	8.1	11.4	0.095	0.507
T. C. ACAPULCO - ZIHUATANEJO	237.00	1	0	6778	87	7.1	1.6	0.7	1.9	0.3	0.2	1.2	87	7.1	5.9	0.088	0.5

GUERRERO

12 CARR : IGUALA - CD. ALTAMIRANO

CLAVE: 12195

RUTA : MEX-050

AÑO : 2007

L U G A R	E S T A C I O N			C L A S I F I C A C I O N V E H I C U L A R E N P O R C I E N T O .													
	KM	TE	SC TDPA	A	B	C2	C3	T3S2	T3S3	T3S2R4	OTROS	A	B	C	K'	D	
IGUALA	0.00	0	0														
T. IZQ. COCULA	9.40	1	0 5809	80.5	4.6	3.8	1.4	4	1.1	1.8	2.8	80.5	4.6	14.9	0.072	0.502	
T. IZQ. COCULA	9.40	3	0 5861	82	3.9	3.6	1.2	5	1	1.7	1.6	82	3.9	14.1	0.08	0.507	
T. IZQ. TELOLOAPAN	63.99	1	0 2625	81.9	3.8	4	2.6	2.9	1.9	1.9	1	81.9	3.8	14.3	0.096	0.501	
T. IZQ. ALMOLOYA	116.60	1	0 1622	86.4	6.3	2.6	2.2	0.9	0.7	0	0.9	86.4	6.3	7.3	0.104	0.502	
T. IZQ. ARCELIA	132.00	3	0 3162	90.5	3.2	2.3	0.8	1.2	1	0.6	0.4	90.5	3.2	6.3	0.088	0.501	
CD. ALTAMIRANO	184.60	1	1 2563	92.7	1.9	1.8	1.5	0.7	0.6	0.7	0.1	92.7	1.9	5.4	0.083	0.501	
CD. ALTAMIRANO	184.60	1	2 2557	93.3	2	2	1.1	0.6	0.6	0.4	0	93.3	2	4.7	0.089	0.501	

13 CARR : LA SABANA - PUERTO MARQUES

CLAVE: 12291

RUTA : MEX

AÑO : 2007

L U G A R	E S T A C I O N			C L A S I F I C A C I O N V E H I C U L A R E N P O R C I E N T O .													
	KM	TE	SC TDPA	A	B	C2	C3	T3S2	T3S3	T3S2R4	OTROS	A	B	C	K'	D	
T. C. LAS CRUCES - PINOTEPA NACIONAL	0.00	3	1 8897	76.5	8.4	5.1	4.6	1.7	1.9	1.3	0.5	76.5	8.4	15.1	0.077	0.503	
T. C. LAS CRUCES - PINOTEPA NACIONAL	0.00	3	2 8991	78.8	8.5	4.5	3.8	1.6	1.3	1.1	0.4	78.8	8.5	12.7	0.085	0.503	
X. C. ACAPULCO - AEROPUERTO ACAPULCO	7.20	1	1 8228	75.3	7.8	2.7	1.6	4.2	2.6	2.2	3.6	75.3	7.8	16.9	0.091	0.509	
X. C. ACAPULCO - AEROPUERTO ACAPULCO	7.20	1	2 7949	73.7	7.7	2.8	1.7	4.8	2.9	2.8	3.6	73.7	7.7	18.6	0.081	0.509	
PUERTO MARQUES	8.70	0	0														

14 CARR : LIBRAMIENTO NORTE DE ACAPULCO

CLAVE: 12421

RUTA : MEX

AÑO : 2007

L U G A R	E S T A C I O N			C L A S I F I C A C I O N V E H I C U L A R E N P O R C I E N T O .													
	KM	TE	SC TDPA	A	B	C2	C3	T3S2	T3S3	T3S2R4	OTROS	A	B	C	K'	D	
T. C. CHILPANCINGO - ACAPULCO	0.00	3	0 3187	83.4	4.4	3.4	2.6	2.7	2.9	0	0.6	83.4	4.4	12.2	0.101	0.504	
T. DER. PELILLO	6.40	3	0 2365	78.9	4.8	5.1	2.6	4	3.3	0.8	0.5	78.9	4.8	16.3	0.082	0.501	
T. C. ACAPULCO - ZIHUATANEJO	21.10	1	0 3151	78.7	7.3	4.4	4.3	1.3	1.7	1.4	0.9	78.7	7.3	14	0.084	0.5	

15 CARR : PIE DE LA CUESTA - BARRA DE COYUCA

CLAVE: 12427

RUTA : GRO

AÑO : 2007

L U G A R	E S T A C I O N			C L A S I F I C A C I O N V E H I C U L A R E N P O R C I E N T O .													
	KM	TE	SC TDPA	A	B	C2	C3	T3S2	T3S3	T3S2R4	OTROS	A	B	C	K'	D	
T. C. ACAPULCO - ZIHUATANEJO	0.00	3	0 9405	67.5	7.4	2.4	0.8	6.8	2.7	8.1	4.3	67.5	7.4	25.1	0.07	0.512	
BARRA DE COYUCA	16.50	1	0 1870	83.6	5	6.6	1.4	1.6	1.5	0.2	0.1	83.6	5	11.4	0.063	0.501	

GUERRERO

16 CARR : RAMAL A AEROPUERTO ZIHUATANEJO

CLAVE: 12423

RUTA : MEX

AÑO : 2007

L U G A R	E S T A C I O N				C L A S I F I C A C I O N V E H I C U L A R E N P O R C I E N T O .												
	KM	TE	SC	TDPA	A	B	C2	C3	T3S2	T3S3	T3S2R4	OTROS	A	B	C	K'	D
T. C. ACAPULCO - ZIHUATANEJO	0.00	3	0	2299	82.4	7.5	2.3	0.8	2.3	1.7	1.1	1.9	82.4	7.5	10.1	0.104	0.501
AEROPUERTO	2.00	0	0														

17 CARR : RAMAL A COCULA

CLAVE: 12082

RUTA : GRO

AÑO : 2007

L U G A R	E S T A C I O N				C L A S I F I C A C I O N V E H I C U L A R E N P O R C I E N T O .												
	KM	TE	SC	TDPA	A	B	C2	C3	T3S2	T3S3	T3S2R4	OTROS	A	B	C	K'	D
T. C. IGUALA - CIUDAD ALTAMIRANO	0.00	3	0	2197	83.5	6	2.3	0.6	3.5	1	1.2	1.9	83.5	6	10.5	0.094	0.507
COCULA	13.00	0	0														

18 CARR : SAN JUAN DE LOS LLANOS - OMETEPEC

CLAVE: 12011

RUTA : MEX

AÑO : 2007

L U G A R	E S T A C I O N				C L A S I F I C A C I O N V E H I C U L A R E N P O R C I E N T O .												
	KM	TE	SC	TDPA	A	B	C2	C3	T3S2	T3S3	T3S2R4	OTROS	A	B	C	K'	D
T. C. LAS CRUCES - PINOTEPA NACIONAL	0.00	3	0	1566	82.7	6.6	1.9	0.9	3.7	0.8	1.6	1.8	82.7	6.6	10.7	0.096	0.501
OMETEPEC	15.94	1	0	1615	80.9	4.8	1.8	0.7	4.8	1.5	2.9	2.6	80.9	4.8	14.3	0.095	0.511

19 CARR : TAXCO - IXCATEOPAN

CLAVE: 12083

RUTA : GRO

AÑO : 2007

L U G A R	E S T A C I O N				C L A S I F I C A C I O N V E H I C U L A R E N P O R C I E N T O .												
	KM	TE	SC	TDPA	A	B	C2	C3	T3S2	T3S3	T3S2R4	OTROS	A	B	C	K'	D
TAXCO	0.00	3	0	3881	86.7	3.6	0.3	0.1	3.7	0.9	2	2.7	86.7	3.6	9.7	0.077	0.503
IXCATEOPAN	36.00	1	0	3581	90.5	4.1	0.3	0.1	2.4	0.5	0.6	1.5	90.5	4.1	5.4	0.075	0.505

20 CARR : TELOLOAPAN - APAXTLA DE CASTREJON

CLAVE: 12081

RUTA : GRO

AÑO : 2007

L U G A R	E S T A C I O N				C L A S I F I C A C I O N V E H I C U L A R E N P O R C I E N T O .												
	KM	TE	SC	TDPA	A	B	C2	C3	T3S2	T3S3	T3S2R4	OTROS	A	B	C	K'	D
T. C. IGUALA - CIUDAD ALTAMIRANO	0.00	3	0	1005	87.7	3.3	2.2	1.2	1.7	1.7	0	2.2	87.7	3.3	9	0.103	0.509
APAXTLA DE CASTREJON	34.00	0	0														

21 CARR : TIERRA COLORADA - CRUZ GRANDE

CLAVE: 12420

RUTA : MEX-198

AÑO : 2007

L U G A R	E S T A C I O N				C L A S I F I C A C I O N V E H I C U L A R E N P O R C I E N T O .												
	KM	TE	SC	TDPA	A	B	C2	C3	T3S2	T3S3	T3S2R4	OTROS	A	B	C	K'	D
TIERRA COLORADA	0.00	3	0	2662	80.8	4.2	1.6	2.3	3.8	3.7	1.8	1.8	80.8	4.2	15	0.085	0.512

GUERRERO

21 CARR : TIERRA COLORADA - CRUZ GRANDE

CLAVE: 12420

RUTA : MEX-198

AÑO : 2007

L U G A R	E S T A C I O N				C L A S I F I C A C I O N V E H I C U L A R E N P O R C I E N T O .												
	KM	TE	SC	TDPA	A	B	C2	C3	T3S2	T3S3	T3S2R4	OTROS	A	B	C	K'	D
TECOANAPA	61.00	1	0	1244	80.9	5.4	6.7	3	1.5	1.1	0.3	1.1	80.9	5.4	13.7	0.109	0.503
AYUTLA DE LOS LIBRES	82.00	1	0	2693	88.8	3.9	2.6	1.3	2	0.5	0.2	0.7	88.8	3.9	7.3	0.085	0.506
AYUTLA DE LOS LIBRES	82.00	3	0	2713	81.8	6.1	2.9	1.9	3.8	0.9	1.2	1.4	81.8	6.1	12.1	0.088	0.505
CRUZ GRANDE	113.80	1	0	2351	86.1	6.9	2.5	0.5	2.3	0.6	0.3	0.8	86.1	6.9	7	0.111	0.517
T. C. LAS CRUCES - PINOTEPA NACIONAL	114.80	0	0														

22 CARR : ZACAPALCO - TAXCO (CUOTA)

CLAVE: 12010

RUTA : MEX-096D

AÑO : 2007

L U G A R	E S T A C I O N				C L A S I F I C A C I O N V E H I C U L A R E N P O R C I E N T O .												
	KM	TE	SC	TDPA	A	B	C2	C3	T3S2	T3S3	T3S2R4	OTROS	A	B	C	K'	D
T. C. PUENTE DE IXTLA - IGUALA (CUOTA)	0.00	0	0														
CASETA DE COBRO ZACAPALCO	0.50	2	0	1600													
CASETA DE COBRO TAXCO	17.83	2	0	2626													
T. C. CUERNAVACA - CHILPANCINGO	25.64	0	0														

23 CARR : CUERNAVACA - ACAPULCO (CUOTA)

CLAVE: 00045

RUTA : MEX-095D

AÑO : 2007

L U G A R	E S T A C I O N				C L A S I F I C A C I O N V E H I C U L A R E N P O R C I E N T O .												
	KM	TE	SC	TDPA	A	B	C2	C3	T3S2	T3S3	T3S2R4	OTROS	A	B	C	K'	D
CUERNAVACA	0.00	3	1	23948	77.4	5.3	4.6	4.7	1.8	2.9	2.2	1.1	77.4	5.3	17.3	0.071	0.504
CUERNAVACA	0.00	3	2	23606	76.4	4.9	4.7	3.8	2.1	3.2	2.2	2.7	76.4	4.9	18.7	0.069	0.504
T. DER. ACATLIPA	15.00	3	1	16012	77.4	5.9	4.6	2.8	3.4	1.7	2.3	1.9	77.4	5.9	16.7	0.077	0.504
T. DER. ACATLIPA	15.00	3	2	15788	79	5.8	4.5	1.6	3.7	1.8	2.3	1.3	79	5.8	15.2	0.095	0.504
CASETA DE COBRO "ALPUYECA"	24.95	1	1	10316	68.8	9.9	8.8	4.9	3.9	1.7	0.4	1.6	68.8	9.9	21.3	0.061	0.502
CASETA DE COBRO "ALPUYECA"	24.95	1	2	10249	68.1	10.4	7.7	4.4	2.3	4.2	0.6	2.3	68.1	10.4	21.5	0.077	0.502
CASETA DE COBRO ALPUYECA	24.95	2	2	2207													
CASETA DE COBRO ALPUYECA	24.95	2	2	2207													
CASETA DE COBRO "ALPUYECA"	24.95	3	1	7767	75.8	10.8	6.4	3.6	1.7	0.6	0.5	0.6	75.8	10.8	13.4	0.067	0.501
CASETA DE COBRO "ALPUYECA"	24.95	3	2	7802	76.6	10.1	5.7	3.7	1.7	0.6	0.6	1	76.6	10.1	13.3	0.078	0.501
LIM. EDOS. TERM. MOR. PPIA. GRO.	52.05	0	0														
CASETA DE COBRO "PASO MORELOS"	89.43	1	1	3029	86.4	2.7	2.6	2.4	2	1.5	0.3	2.1	86.4	2.7	10.9	0.096	0.502
CASETA DE COBRO "PASO MORELOS"	89.43	1	2	3002	86.8	3.2	2.3	2.3	1.6	1.5	0.5	1.8	86.8	3.2	10	0.088	0.502
CASETA DE COBRO PASO MORELOS	89.43	2	1	3276													
CASETA DE COBRO PASO MORELOS	89.43	2	2	3276													
CASETA DE COBRO "PALO BLANCO"	199.80	1	1	3809	76	2.4	11	4.3	2.4	1	2.1	0.8	76	2.4	21.6	0.076	0.5

GUERRERO

23 CARR : CUERNAVACA - ACAPULCO (CUOTA)

CLAVE: 00045

RUTA : MEX-095D

AÑO : 2007

L U G A R	E S T A C I O N				C L A S I F I C A C I O N V E H I C U L A R E N P O R C I E N T O .												
	KM	TE	SC	TDPA	A	B	C2	C3	T3S2	T3S3	T3S2R4	OTROS	A	B	C	K'	D
CASETA DE COBRO "PALO BLANCO"	199.80	1	2	3804	76.6	2.3	9.1	3.6	3	1.7	2	1.7	76.6	2.3	21.1	0.062	0.5
CASETA DE COBRO PALO BLANCO	199.80	2	1	3942													
CASETA DE COBRO PALO BLANCO	199.80	2	2	3942													
X. C. CHILPANCINGO - ACAPULCO (TIERRA COLORADA)	231.70	1	1	3597	75.4	6.2	9	3.4	2.4	0.7	2.2	0.7	75.4	6.2	18.4	0.074	0.503
X. C. CHILPANCINGO - ACAPULCO (TIERRA COLORADA)	231.70	1	2	3646	75.8	6.1	7.8	3.5	2.7	1	2.3	0.8	75.8	6.1	18.1	0.067	0.503
CASETA DE COBRO "LA VENTA"	276.10	1	1	3411	84	6	2.7	2.3	1.6	1.8	1.3	0.3	84	6	10	0.104	0.501
CASETA DE COBRO "LA VENTA"	276.10	1	2	3429	83.5	6.2	2.5	3	2	1.6	1	0.2	83.5	6.2	10.3	0.107	0.501
CASETA DE COBRO LA VENTA	276.10	2	1	3693													
CASETA DE COBRO LA VENTA	276.10	2	2	3693													
T. C. CHILPANCINGO - ACAPULCO (ENT. LA VENTA)	277.20	1	1	2980	82.2	4.4	2.9	2.3	3.8	3.6	0.7	0.1	82.2	4.4	13.4	0.093	0.511
T. C. CHILPANCINGO - ACAPULCO (ENT. LA VENTA)	277.20	1	2	3117	82.1	4.4	2.4	2	4.2	4.1	0.8	0	82.1	4.4	13.5	0.099	0.511

24 CARR : CUERNAVACA - CHILPANCINGO

CLAVE: 00042

RUTA : MEX-095

AÑO : 2007

L U G A R	E S T A C I O N				C L A S I F I C A C I O N V E H I C U L A R E N P O R C I E N T O .												
	KM	TE	SC	TDPA	A	B	C2	C3	T3S2	T3S3	T3S2R4	OTROS	A	B	C	K'	D
CUERNAVACA	0.00	0	0														
TEMIXCO	9.80	1	0	26058	75.4	8.9	3.8	3.4	2.7	2.1	1.5	2.2	75.4	8.9	15.7	0.073	0.501
TEMIXCO	9.80	3	1	12630	80	5.1	3.5	4.8	0.9	2.6	2.5	0.6	80	5.1	14.9	0.087	0.501
TEMIXCO	9.80	3	2	12661	82.3	5.4	3.9	3.1	0.5	2.4	2.3	0.1	82.3	5.4	12.3	0.089	0.501
ACATLIPA	12.43	1	0	17745	81.2	4.6	6.1	2.9	1.7	2	0.8	0.7	81.2	4.6	14.2	0.082	0.503
ACATLIPA	12.43	3	0	14809	76.5	6.1	6.1	4.1	2.5	2.2	1.3	1.2	76.5	6.1	17.4	0.072	0.502
T. IZQ. XOCHITEPEC (REAL DEL PUENTE)	16.05	3	0	11084	79.8	3.4	6.2	3.7	2.7	1.2	1	2	79.8	3.4	16.8	0.118	0.501
X. C. ALPUYECA - JOJUTLA	24.15	1	0	14143	84	4.3	3.1	1.2	4.2	0.8	1	1.4	84	4.3	11.7	0.08	0.501
T. DER. COATETELCO	28.00	3	0	8665	83.4	6.4	3.1	1.8	2.8	0.9	0.6	1	83.4	6.4	10.2	0.077	0.501
T. DER. MICHAPA	44.36	1	0	7603	79.1	7.2	2.4	2.6	2.6	3.2	1.1	1.8	79.1	7.2	13.7	0.072	0.501
T. IZQ. CUERNAVACA - IGUALA (CUOTA)	46.93	1	0	7017	85	4.1	2.3	2.4	2	1.8	1	1.4	85	4.1	10.9	0.074	0.504
T. IZQ. CUERNAVACA - IGUALA (CUOTA)	46.93	3	0	6682	85.9	3.9	1.5	2	1.9	2.1	1	1.7	85.9	3.9	10.2	0.08	0.501
HUAJINTLA	52.00	3	0	6885	85.8	4.2	2.1	1.7	1.4	1.6	1.6	1.6	85.8	4.2	10	0.061	0.503
LIM. EDOS. TERM. MOR. PPIA. GRO.	56.55	0	0														
T. DER. IXTAPAN DE LA SAL (AXIXINTLA)	63.47	1	0	2957	80.1	4.7	4.5	6.8	1.2	0.5	1.2	1	80.1	4.7	15.2	0.113	0.541
TAXCO	89.90	3	0	5235	85.5	2.6	2.7	0.8	3.2	1.1	1.7	2.4	85.5	2.6	11.9	0.079	0.504
IGUALA	119.60	1	0	5904	78.5	5.1	3	2.5	4.9	1	2	3	78.5	5.1	16.4	0.082	0.501
T. IZQ. PUENTE DE IXTLA	124.00	3	0	11488	92.1	1.7	1.7	1.4	1.8	0.3	0.4	0.6	92.1	1.7	6.2	0.083	0.518
T. DER. SABANA GRANDE	145.00	1	0	7158	81.9	2.7	5.3	2.2	2	2.2	0.6	3.1	81.9	2.7	15.4	0.077	0.509

GUERRERO

27 CARR : PUENTE DE IXTLA - IGUALA (CUOTA)

CLAVE: 00043

RUTA : MEX-D

AÑO : 2007

L U G A R	E S T A C I O N			C L A S I F I C A C I O N V E H I C U L A R E N P O R C I E N T O .												
	KM	TE	SC TDPA	A	B	C2	C3	T3S2	T3S3	T3S2R4	OTROS	A	B	C	K'	D
T. C. CUERNAVACA - ACAPULCO (CUOTA)	0.00	0	0													
T. IZQ. PUENTE DE IXTLA	2.00	3	0 6421	73.5	8.2	5.8	3.6	2.7	3.6	1.5	1.1	73.5	8.2	18.3	0.072	0.502
T. DER. AMACUZAC	9.63	3	0 7240	80.2	3.7	3.6	2.8	3	5	1.1	0.6	80.2	3.7	16.1	0.078	0.502
LIM. EDOS. TERM. MOR. PPIA. GRO.	15.33	0	0													
T. IZQ. BUENAVISTA	33.58	3	0 5469	72.3	7.3	4.6	4.8	4	5.5	0.8	0.7	72.3	7.3	20.4	0.106	0.5
CASETA DE COBRO IGUALA	59.14	2	0 4423													
T. DER. IGUALA	59.50	1	0 4691	78.9	5.5	5.8	4.4	2.3	1.7	0.4	1	78.9	5.5	15.6	0.081	0.502
T. C. CUERNAVACA - CHILPANCINGO	62.80	0	0													

28 CARR : TOLUCA - AXIXINTLA

CLAVE: 00122

RUTA : EM-MEX-055

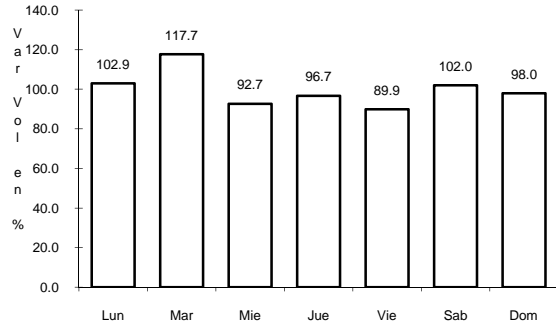
AÑO : 2007

L U G A R	E S T A C I O N			C L A S I F I C A C I O N V E H I C U L A R E N P O R C I E N T O .												
	KM	TE	SC TDPA	A	B	C2	C3	T3S2	T3S3	T3S2R4	OTROS	A	B	C	K'	D
TOLUCA	0.00	0	0													
T. IZQ. METEPEC	4.74	1	1 19266	83.7	4.2	5.4	2.1	1.6	1.5	0.2	1.3	83.7	4.2	12.1	0.09	0.507
T. IZQ. METEPEC	4.74	1	2 19461	82.8	4.2	5	2.5	1.9	1.5	0.2	1.9	82.8	4.2	13	0.084	0.507
MEXICALCINGO	8.80	1	1 20110	82.9	5	5.2	1.8	2	1.8	0.2	1.1	82.9	5	12.1	0.102	0.501
MEXICALCINGO	8.80	1	2 19974	82.1	5	5.6	2.4	1.7	1.5	0.2	1.5	82.1	5	12.9	0.087	0.501
MEXICALCINGO	8.80	3	1 14623	82.8	4.7	4.1	2.3	2.3	2.1	0.3	1.4	82.8	4.7	12.5	0.097	0.501
MEXICALCINGO	8.80	3	2 14528	82	4.7	5	2.6	2	1.8	0.3	1.6	82	4.7	13.3	0.103	0.501
T. DER. CALIMAYA	12.70	3	1 8793	84	3	5.9	3	1.1	1	0.1	1.9	84	3	13	0.147	0.502
T. DER. CALIMAYA	12.70	3	2 8788	83.7	3	5.5	3.1	1.1	1.2	0.1	2.3	83.7	3	13.3	0.097	0.502
TENANCINGO	46.50	3	0 7311	84.3	2.5	6.8	1.8	1.5	1.3	0.4	1.4	84.3	2.5	13.2	0.081	0.519
T. IZQ. VILLA GUERRERO	56.84	3	0 8251	85.6	3.9	2	0.6	4.9	0.4	1.3	1.3	85.6	3.9	10.5	0.084	0.508
IXTAPAN DE LA SAL	80.00	1	1 3171	89.6	4	1.4	0.7	2.8	0.3	0.3	0.9	89.6	4	6.4	0.096	0.504
IXTAPAN DE LA SAL	80.00	1	2 3225	89.6	3.8	1.6	0.7	2.8	0.3	0.3	0.9	89.6	3.8	6.6	0.149	0.504
IXTAPAN DE LA SAL	80.00	3	1 3084	82.7	3.6	1.7	0.9	2.7	1.9	1.6	4.9	82.7	3.6	13.7	0.083	0.508
IXTAPAN DE LA SAL	80.00	3	2 2984	82	3.7	1.8	0.9	2.8	2	1.6	5.2	82	3.7	14.3	0.082	0.508
TONATICO	86.20	3	0 4724	83.3	4.7	3.6	3.2	1.6	2.2	0	1.4	83.3	4.7	12	0.085	0.513
LIM. EDOS. TERM. MEX. PPIA. GRO.	99.00	0	0													
CACAHUAMILPA	120.30	1	0 2505	87.1	2.2	4.7	2.2	1.2	1	0.6	1	87.1	2.2	10.7	0.103	0.502
T. C. CUERNAVACA - CHILPANCINGO	125.30	1	0 1501	88.6	3.3	2.4	1	2.4	0.5	0.6	1.2	88.6	3.3	8.1	0.104	0.501

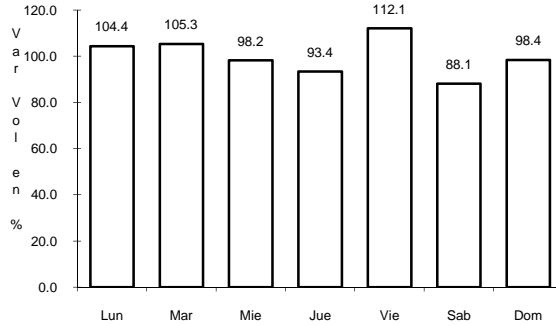
1 CARR: LAS CRUCES - PINOTEPA NACIONAL

CLAVE: 00073

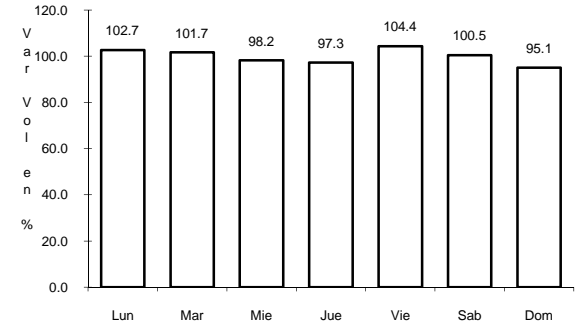
ruta: MEX-200



Km: 0.00 Tipo: 3 Sent: 1



Km: 0.00 Tipo: 3 Sent: 2

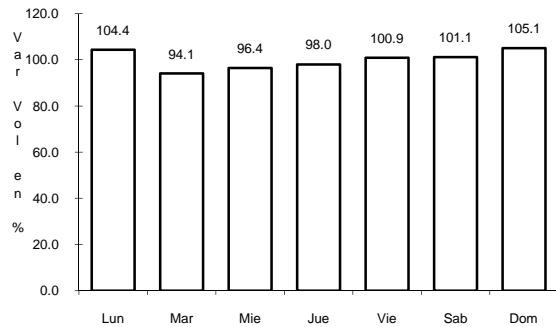


Km: 245.47 Tipo: 3 Sent: 0

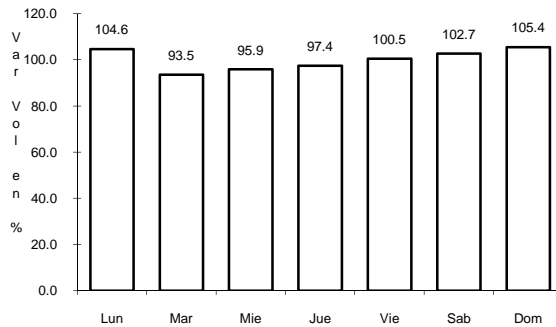
2 CARR: ZIHUATANEJO - LA MIRA

CLAVE: 00121

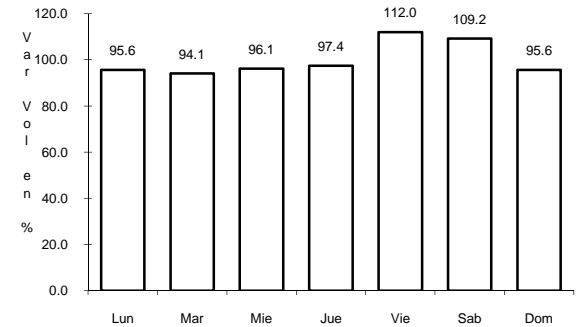
ruta: MEX-200



Km: 0.00 Tipo: 3 Sent: 1



Km: 0.00 Tipo: 3 Sent: 2

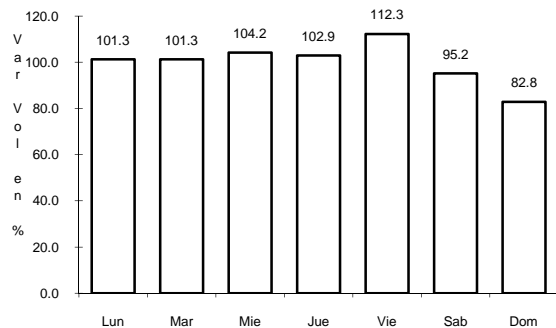


Km: 52.00 Tipo: 3 Sent: 0

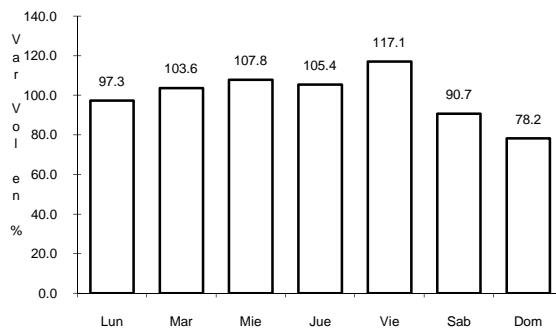
3 CARR: ACAPULCO - AEROPUERTO ACAPULCO

CLAVE: 12292

ruta: GRO



Km: 8.70 Tipo: 1 Sent: 1

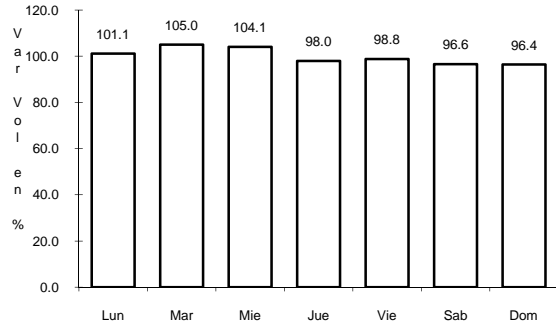


Km: 8.70 Tipo: 1 Sent: 2

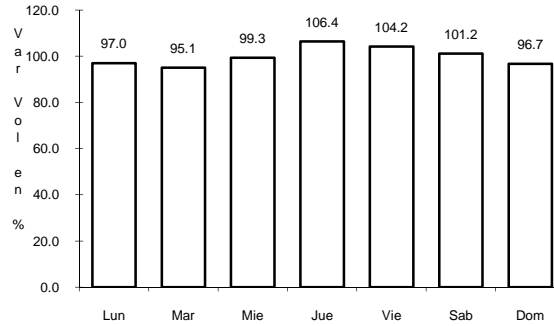
4 CARR: ACAPULCO - ZIHUATANEJO

CLAVE: 12072

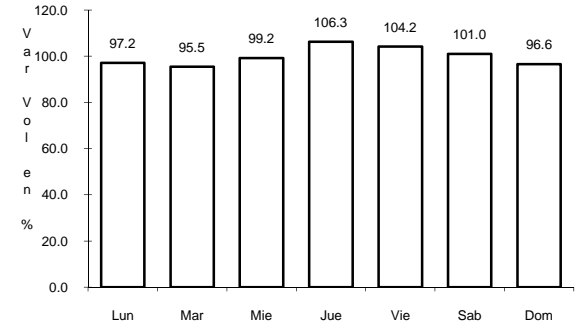
RUTA: MEX-200



Km: 10.37 Tipo: 1 Sent: 0



Km: 242.90 Tipo: 1 Sent: 1

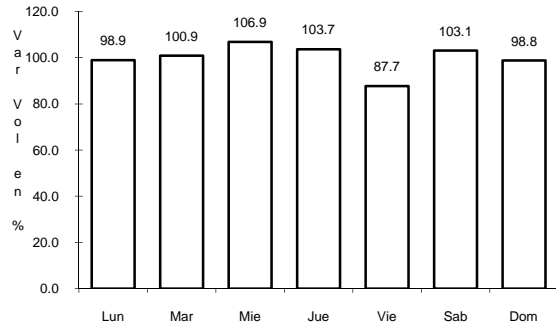


Km: 242.90 Tipo: 1 Sent: 2

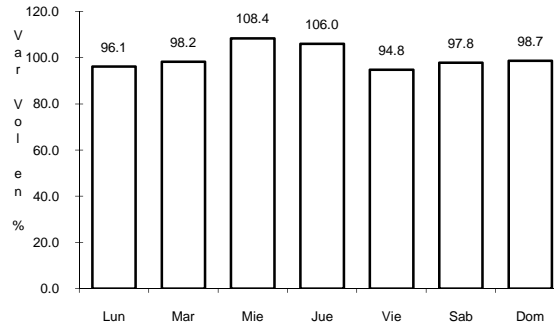
5 CARR: CD. ALTAMIRANO - T. C. (ZIHUATANEJO - LA MIRA)

CLAVE: 12422

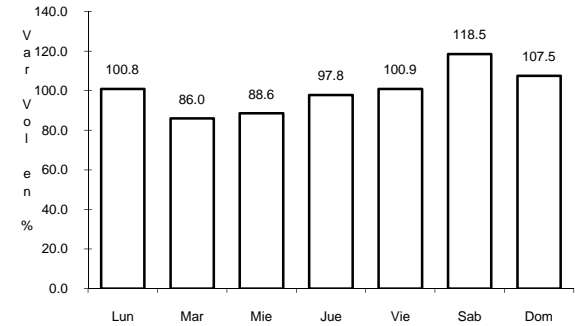
RUTA: MEX-134



Km: 0.00 Tipo: 3 Sent: 0



Km: 15.00 Tipo: 3 Sent: 0

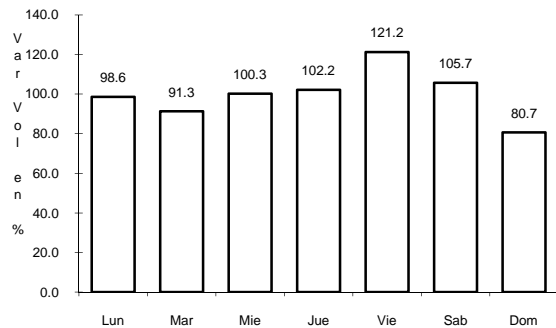


Km: 185.30 Tipo: 1 Sent: 0

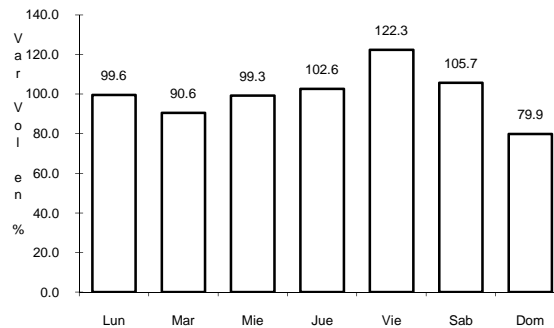
6 CARR: CHILPANCINGO - ACAPULCO

CLAVE: 12045

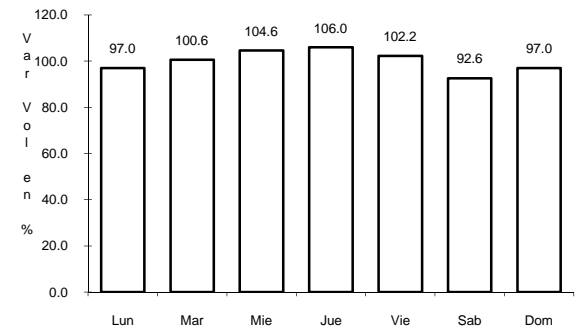
RUTA: MEX-095



Km: 4.20 Tipo: 1 Sent: 1



Km: 4.20 Tipo: 1 Sent: 2

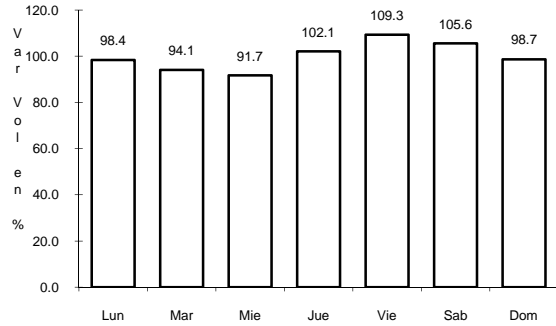


Km: 112.80 Tipo: 3 Sent: 0

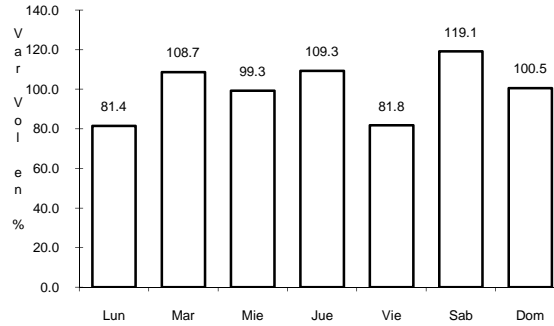
7 CARR: CHILPANCINGO - JILOTEPEC

CLAVE: 12002

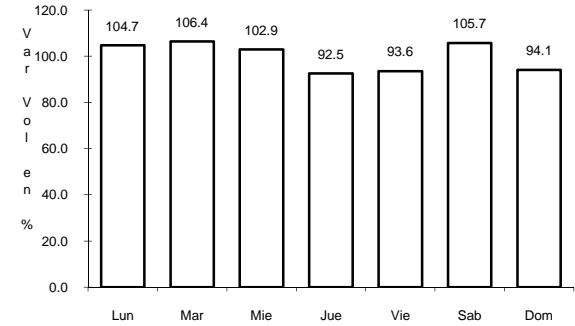
ruta: MEX-092



Km: 0.00 Tipo: 3 Sent: 0



Km: 178.50 Tipo: 1 Sent: 0

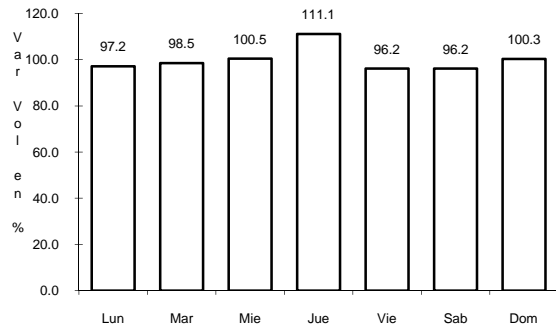


Km: 235.00 Tipo: 1 Sent: 0

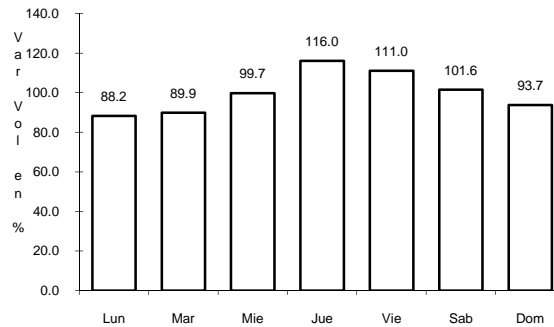
8 CARR: CHILPANCINGO - CHICHIHUALCO

CLAVE: 12426

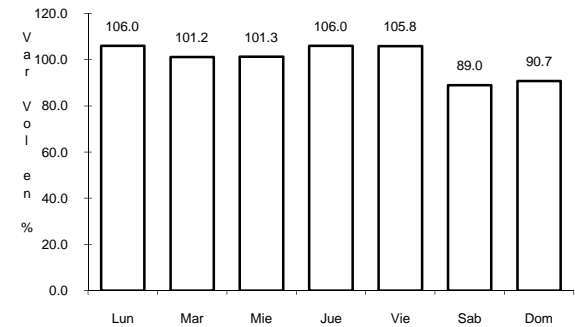
ruta: MEX-196



Km: 0.00 Tipo: 3 Sent: 0



Km: 15.10 Tipo: 1 Sent: 0

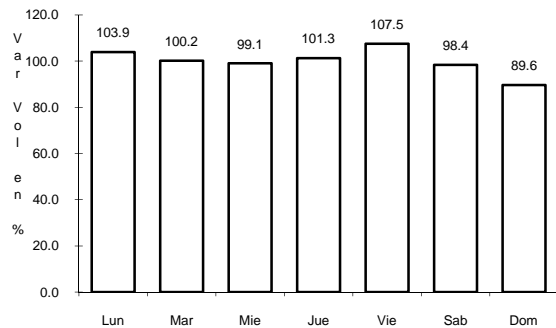


Km: 26.30 Tipo: 1 Sent: 0

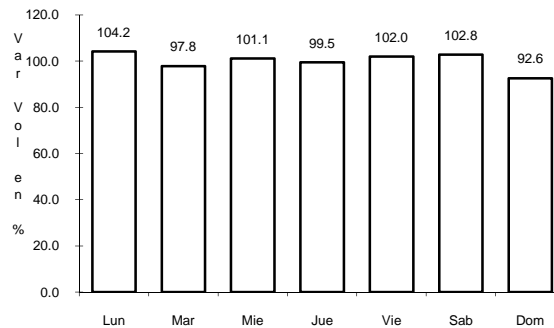
9 CARR: T. C. (IGUALA - CHILPANCINGO) - ATENANGO DEL RIO

CLAVE: 12001

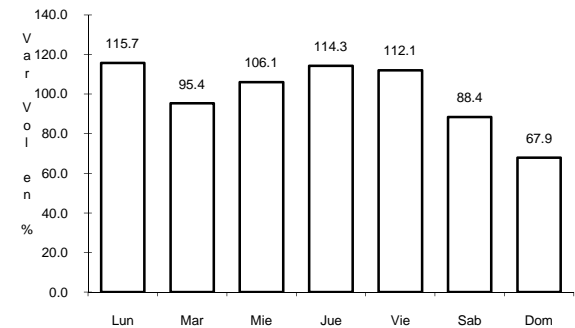
ruta: GRO-001



Km: 0.00 Tipo: 3 Sent: 0



Km: 22.00 Tipo: 3 Sent: 0

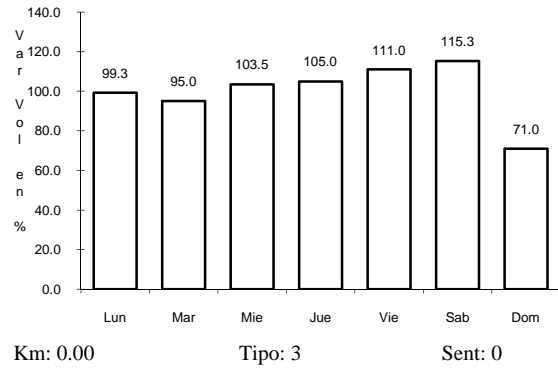


Km: 62.00 Tipo: 1 Sent: 0

10 CARR: ENT. POTRERO - LOMAS DE CHAPULTEPEC

CLAVE: 12293

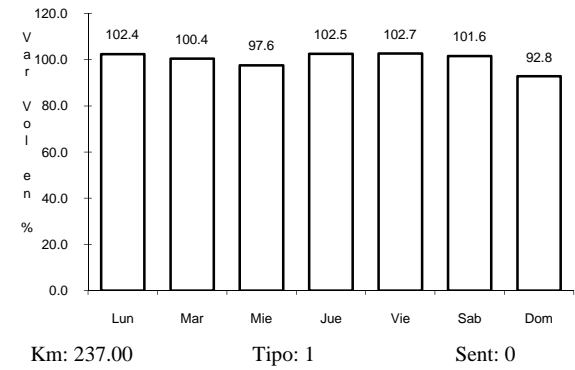
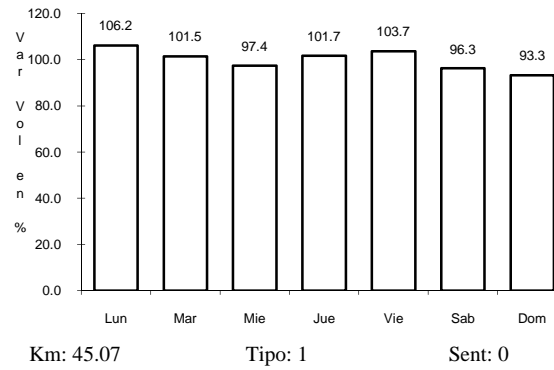
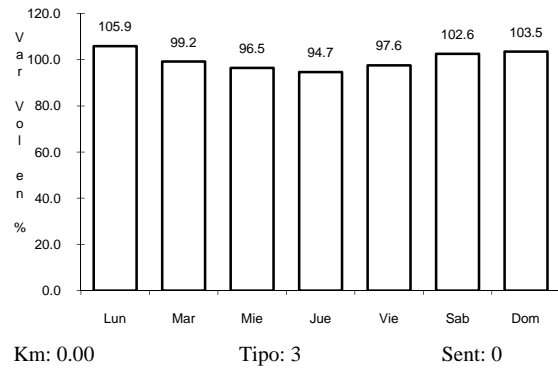
RUTA: GRO



11 CARR: MILPILLAS - T. C. (ACAPULCO - ZIHUATANEJO)

CLAVE: 12012

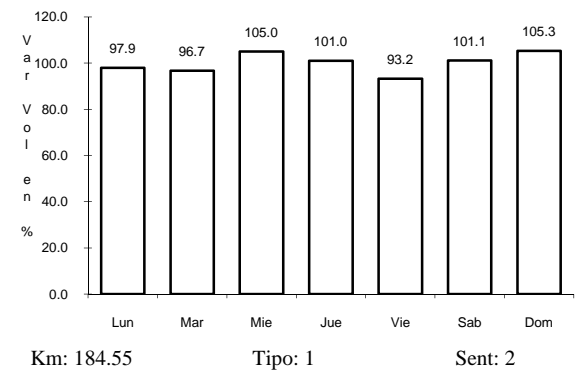
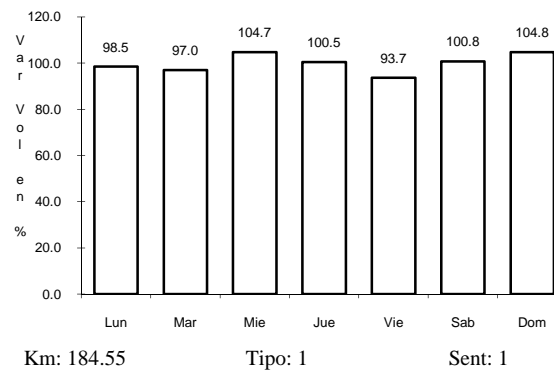
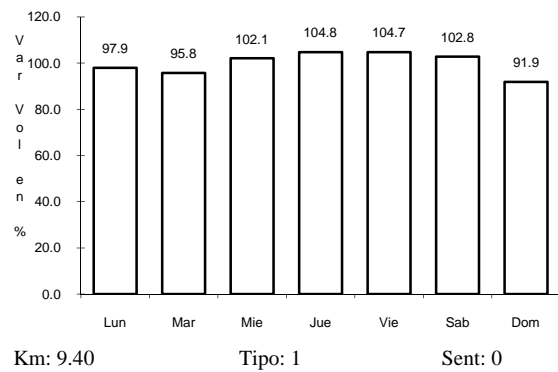
RUTA: MEX-196



12 CARR: IGUALA - CD. ALTAMIRANO

CLAVE: 12195

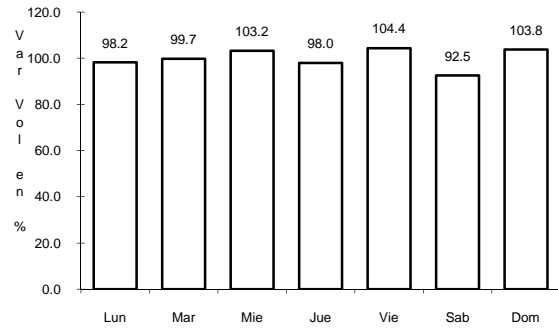
RUTA: MEX-050



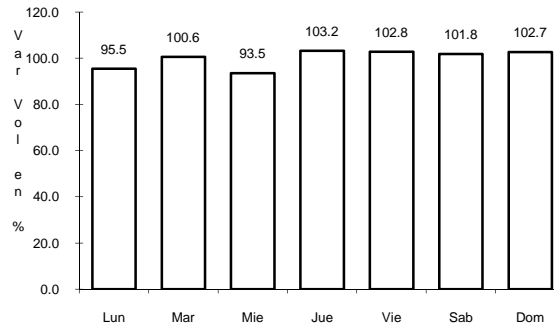
13 CARR: LA SABANA - PUERTO MARQUES

CLAVE: 12291

ruta: MEX



Km: 0.00 Tipo: 3 Sent: 1

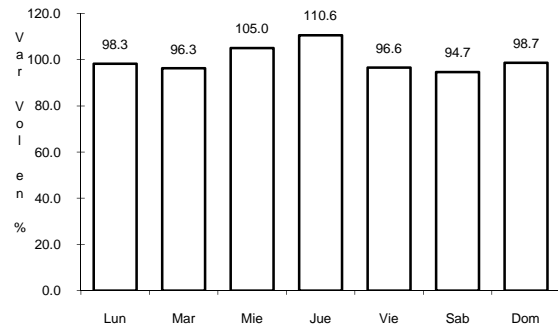


Km: 0.00 Tipo: 3 Sent: 2

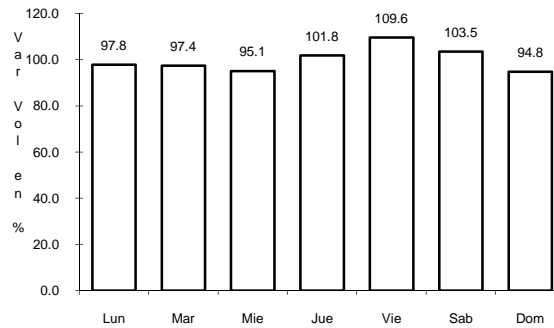
14 CARR: LIBRAMIENTO NORTE DE ACAPULCO

CLAVE: 12421

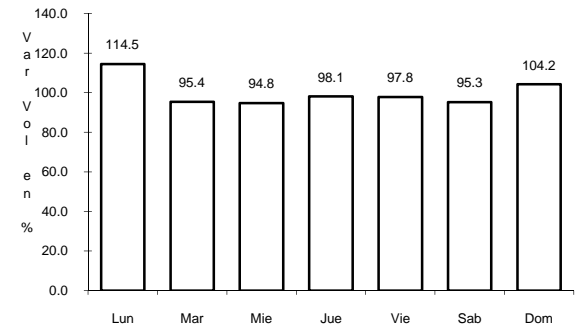
ruta: MEX



Km: 0.00 Tipo: 3 Sent: 0



Km: 6.40 Tipo: 3 Sent: 0

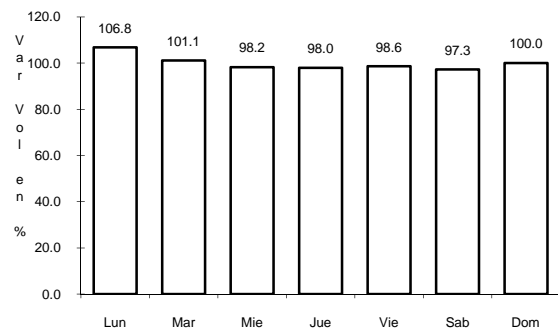


Km: 21.10 Tipo: 1 Sent: 0

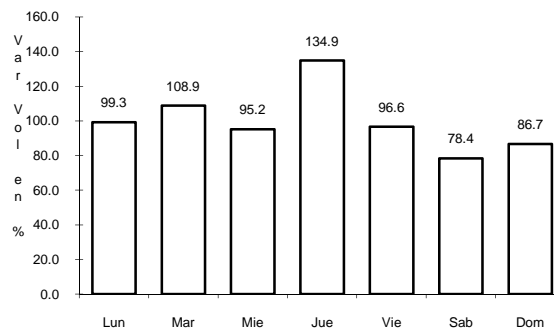
15 CARR: PIE DE LA CUESTA - BARRA DE COYUCA

CLAVE: 12427

ruta: GRO



Km: 0.00 Tipo: 3 Sent: 0

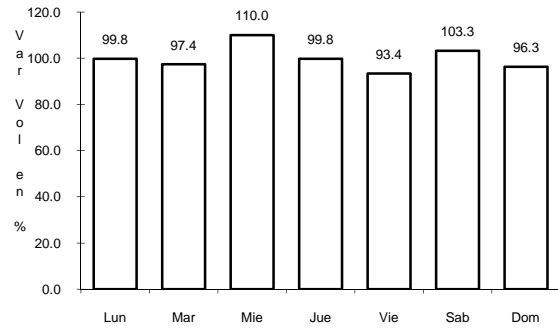


Km: 16.50 Tipo: 1 Sent: 0

16 CARR: RAMAL A AEROPUERTO ZIHUATANEJO

CLAVE: 12423

RUTA: MEX



Km: 0.00

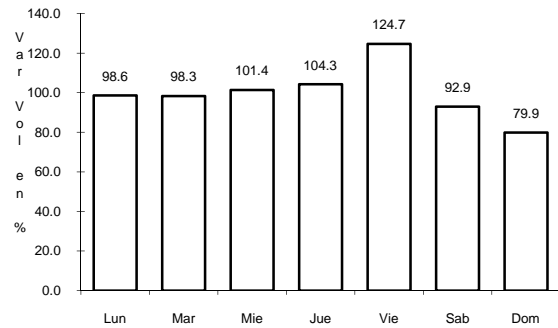
Tipo: 3

Sent: 0

17 CARR: RAMAL A COCULA

CLAVE: 12082

RUTA: GRO



Km: 0.00

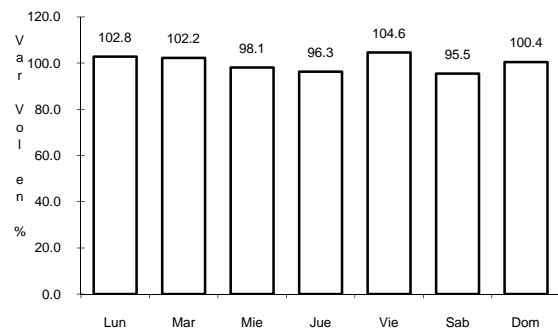
Tipo: 3

Sent: 0

18 CARR: SAN JUAN DE LOS LLANOS - OMETEPEC

CLAVE: 12011

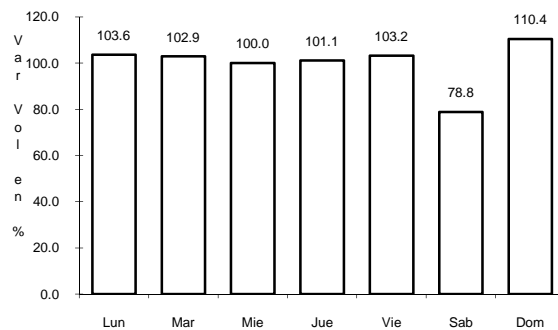
RUTA: MEX



Km: 0.00

Tipo: 3

Sent: 0



Km: 15.94

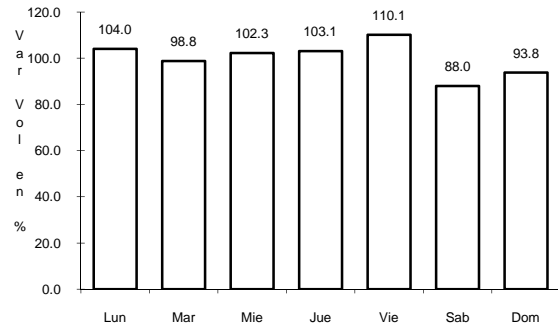
Tipo: 1

Sent: 0

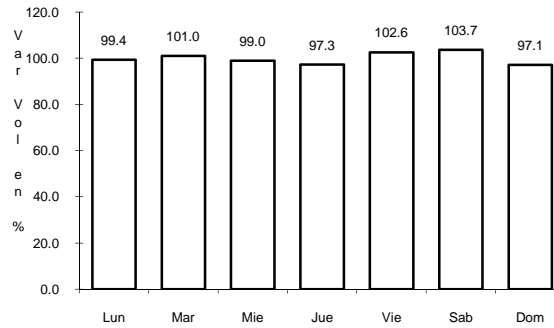
19 CARR: TAXCO - IXCATEOPAN

CLAVE: 12083

RUTA: GRO



Km: 0.00 Tipo: 3 Sent: 0

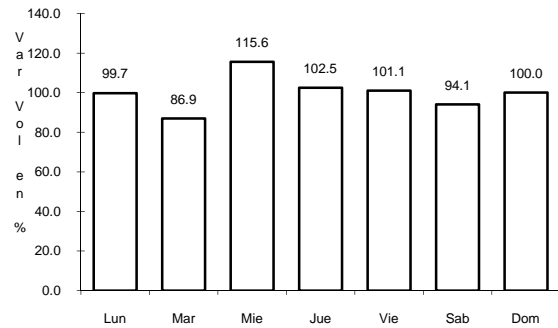


Km: 36.00 Tipo: 1 Sent: 0

20 CARR: TELOLOAPAN - APAXTLA DE CASTREJON

CLAVE: 12081

RUTA: GRO

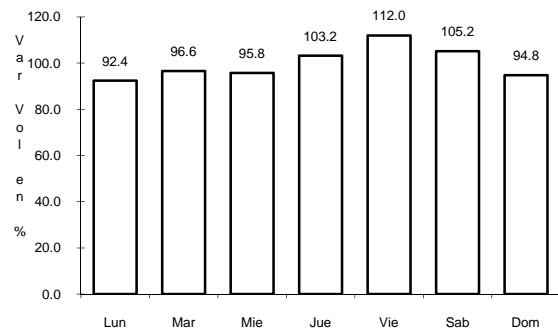


Km: 0.00 Tipo: 3 Sent: 0

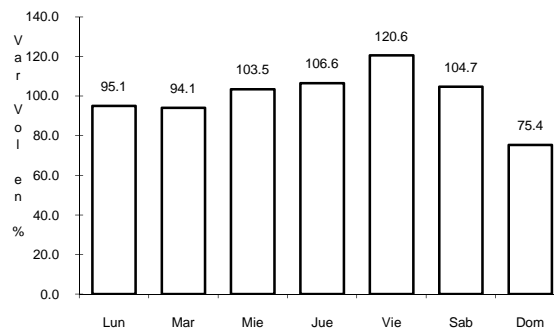
21 CARR: TIERRA COLORADA - CRUZ GRANDE

CLAVE: 12420

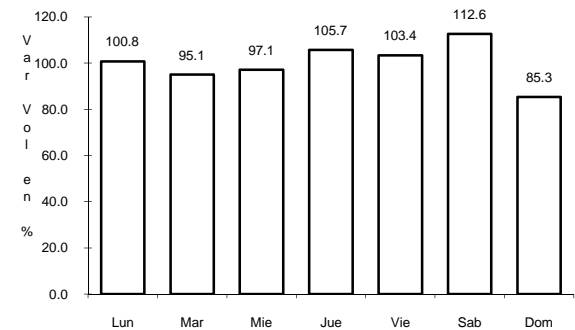
RUTA: MEX-198



Km: 0.00 Tipo: 3 Sent: 0



Km: 61.00 Tipo: 1 Sent: 0

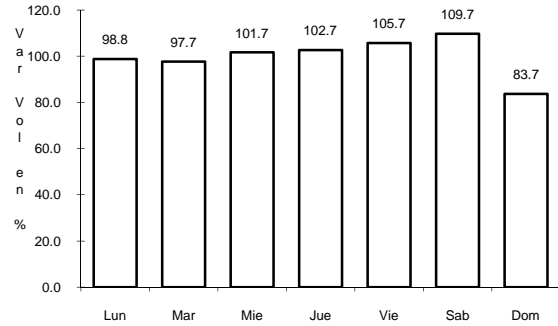


Km: 113.80 Tipo: 1 Sent: 0

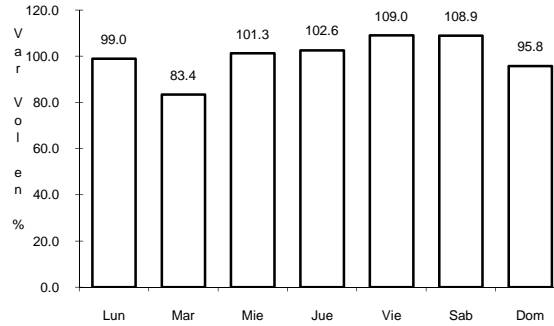
27 CARR: PUENTE DE IXTLA - IGUALA (CUOTA)

CLAVE: 00043

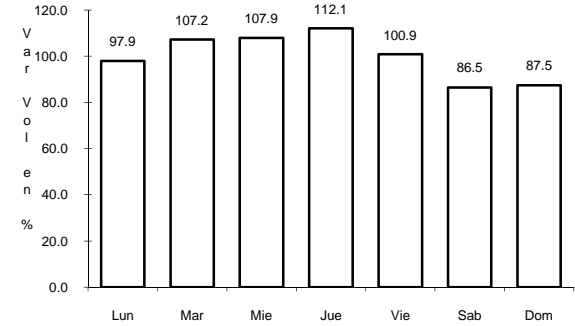
RUTA: MEX-D



Km: 2.00 Tipo: 3 Sent: 0



Km: 33.58 Tipo: 3 Sent: 0

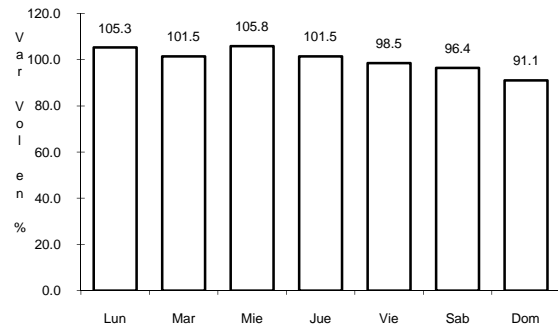


Km: 59.50 Tipo: 1 Sent: 0

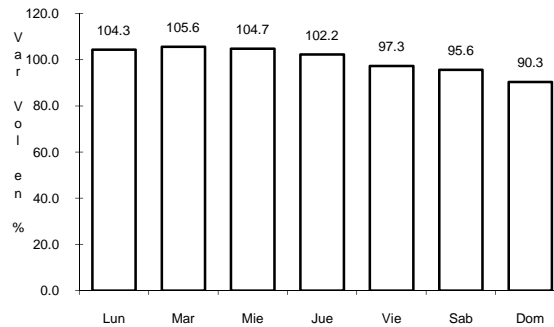
28 CARR: TOLUCA - AXIXINTLA

CLAVE: 00122

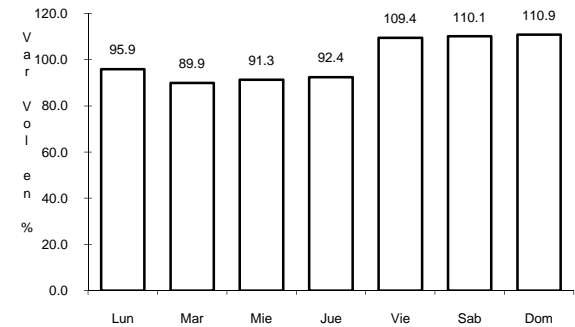
RUTA: EM-MEX-055



Km: 4.74 Tipo: 1 Sent: 1



Km: 4.74 Tipo: 1 Sent: 2

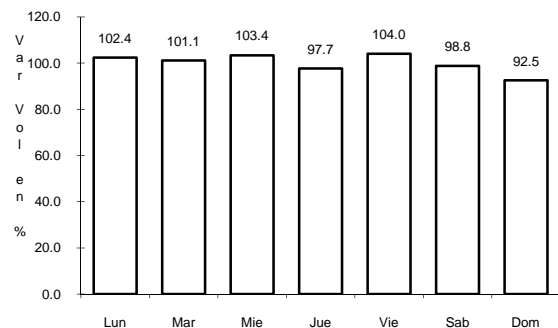


Km: 125.30 Tipo: 1 Sent: 0

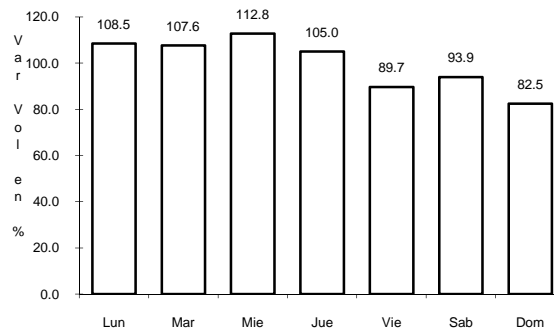
29 CARR: TOLUCA - CD. ALTAMIRANO

CLAVE: 00020

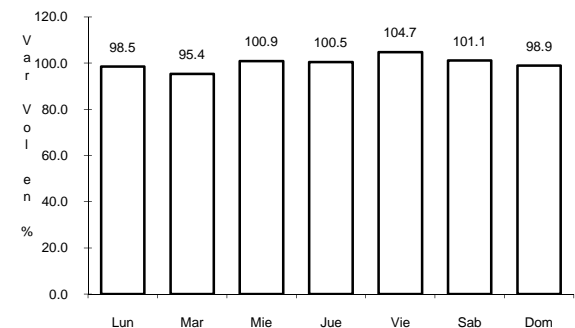
RUTA: MEX-134



Km: 1.78 Tipo: 3 Sent: 1



Km: 1.78 Tipo: 3 Sent: 2



Km: 210.30 Tipo: 1 Sent: 0