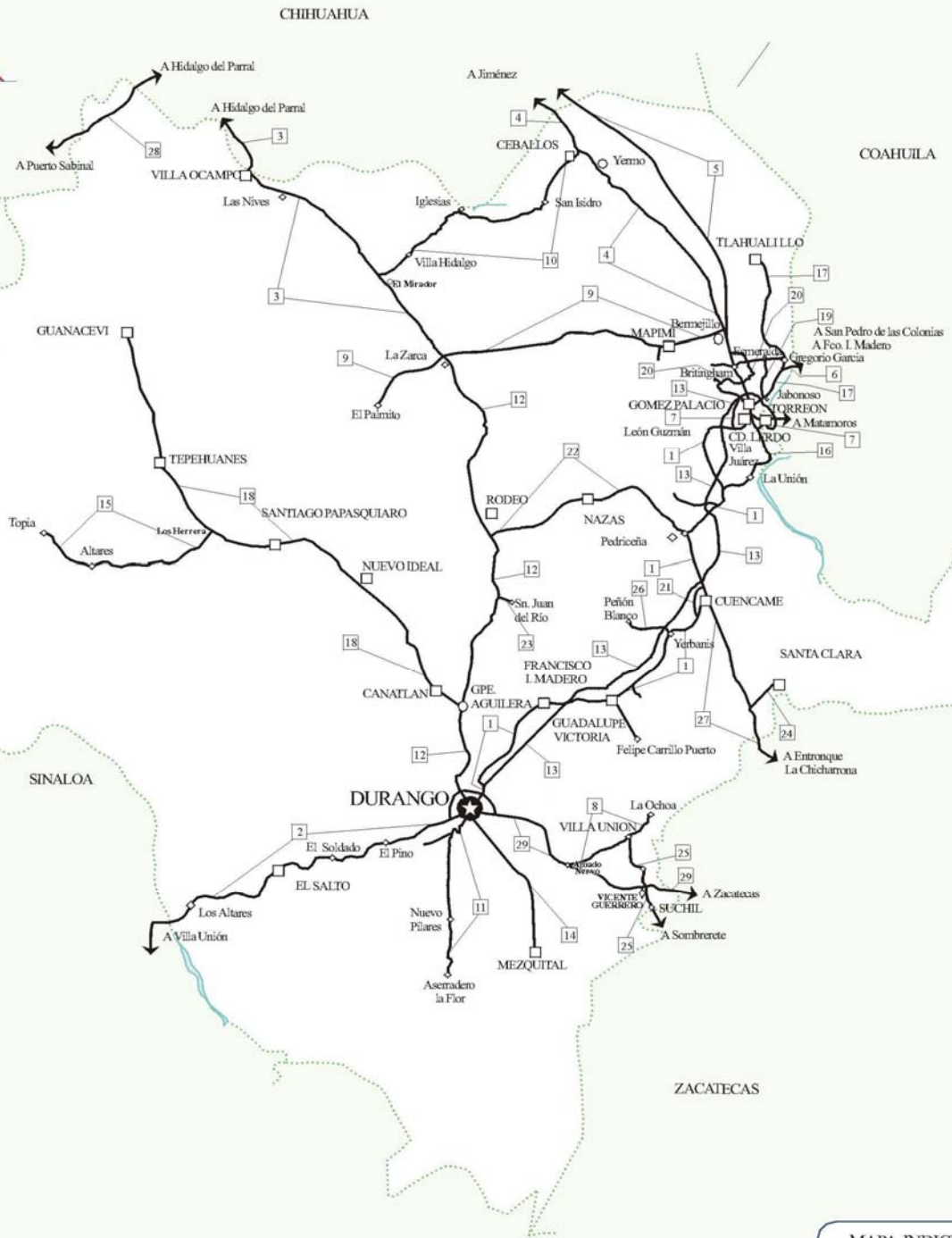
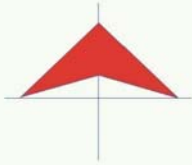


# 10 DURANGO



Secretaría de Comunicaciones y Transportes

MAPA INDICE  
15 Num. Indice  
2008

## CARRETERAS AFORADAS

Num. INDICE	CARRETERA
1	DURANGO - TORREON
2	DURANGO - VILLA UNION
3	ENT. LA ZARCA - HIDALGO DEL PARRAL
4	GOMEZ PALACIO - JIMENEZ
5	GOMEZ PALACIO - JIMENEZ (CUOTA)
6	GREGORIO GARCIA - FRANCISCO I. MADERO
7	LIBRAMIENTO DE TORREON
8	AMADO NERVO - LA OCHOA
9	BERMEJILLO - EL PALMITO
10	CEBALLOS - EL MIRADOR
11	DURANGO - ASERRADERO LA FLOR
12	DURANGO - ENT. LA ZARCA
13	DURANGO - GOMEZ PALACIO (CUOTA)
14	DURANGO - MEZQUITAL
15	ENT. LOS HERRERA - TOPIA
16	GOMEZ PALACIO - LA UNION
17	GOMEZ PALACIO - TLAHUALILLO
18	GUADALUPE AGUILERA - TEPEHUANES
19	JABONOSO - ESMERALDA
20	LA TORREÑA - BRITTINGHAM
21	LIBRAMIENTO CUENCAME
22	PEDRICEÑA - ENT. RODEO
23	RAMAL A SAN JUAN DEL RIO
24	RAMAL A SANTA CLARA
25	SUCHIL - VILLA UNION
26	YERBANIS - PEÑON BLANCO
27	ENT. LA CHICHARRONA - CUENCAME
28	HIDALGO DEL PARRAL - GUADALUPE Y CALVO
29	ZACATECAS - DURANGO



DURANGO

2 CARR : DURANGO - VILLA UNION

CLAVE: 00083

RUTA : MEX-040

AÑO : 2007

L U G A R	E S T A C I O N				C L A S I F I C A C I O N V E H I C U L A R E N P O R C I E N T O .												
	KM	TE	SC	TDPA	A	B	C2	C3	T3S2	T3S3	T3S2R4	OTROS	A	B	C	K'	D
DURANGO	0.00	3	0	5013	84.8	3.5	1.2	3.4	3.1	1.8	1.3	0.9	84.8	3.5	11.7	0.099	0.501
T. DER. PINO	22.86	3	0	4893	76.5	4.2	2.5	3.3	6.8	3.7	1.8	1.2	76.5	4.2	19.3	0.108	0.502
T. IZQ. ESTACION NAVIOS	58.42	3	0	2458	71.9	6.3	1.5	3.9	6.9	4.5	3.1	1.9	71.9	6.3	21.8	0.08	0.503
LLANO GRANDE	77.23	1	0	2593	73.4	7.1	1.6	3.4	7.7	4.5	1.1	1.2	73.4	7.1	19.5	0.083	0.505
EL SALTO	99.76	3	0	2693	72.8	7.7	3.1	3.1	5.3	2.4	3.9	1.7	72.8	7.7	19.5	0.101	0.503
LA CIUDAD	145.50	1	0	1719	68.6	6.6	1.7	4.2	8.9	4.7	3.8	1.5	68.6	6.6	24.8	0.098	0.509
LA CIUDAD	145.50	3	0	1455	65.6	5.3	1.6	5.3	12.7	6.3	1.7	1.5	65.6	5.3	29.1	0.084	0.505
LIM. EDOS. TERM. DGO. PPIA. SIN.	198.50	0	0														
T. C. TEPIC - MAZATLAN	294.40	1	0	6818	59.2	6.2	5.3	5.1	10.9	3.1	8	2.2	59.2	6.2	34.6	0.065	0.505

3 CARR : ENT. LA ZARCA - HIDALGO DEL PARRAL

CLAVE: 00488

RUTA : MEX-045

AÑO : 2007

L U G A R	E S T A C I O N				C L A S I F I C A C I O N V E H I C U L A R E N P O R C I E N T O .												
	KM	TE	SC	TDPA	A	B	C2	C3	T3S2	T3S3	T3S2R4	OTROS	A	B	C	K'	D
ENT. LA ZARCA	0.00	3	0	864	80.9	4.4	2.9	3.5	4.9	2.6	0.3	0.5	80.9	4.4	14.7	0.073	0.505
T. DER. CEBALLOS	47.85	1	0	864	82.7	3	3.5	3.6	2.6	1.8	2	0.8	82.7	3	14.3	0.086	0.52
T. DER. CEBALLOS	47.85	3	0	981	79.9	6.4	4.2	3.1	2.3	1.6	1.8	0.7	79.9	6.4	13.7	0.087	0.527
T. IZQ. CANUTILLO	92.35	3	0	1198	83.1	5.3	4.3	1.3	2.2	1.5	1.7	0.6	83.1	5.3	11.6	0.088	0.521
LAS NIEVES	97.60	3	0	1823	81.4	4.8	4.5	2.4	2.5	1.7	1.9	0.8	81.4	4.8	13.8	0.087	0.527
T. IZQ. OCAMPO	109.20	3	0	1001	83.1	4.8	3	3.2	2.1	1.5	1.7	0.6	83.1	4.8	12.1	0.108	0.521
LIM. EDOS. TERM. DGO. PPIA. CHIH.	122.90	0	0														
MATAMOROS	148.00	1	0	742	79.7	5.7	3.3	3.5	3.1	1.5	1.5	1.7	79.7	5.7	14.6	0.094	0.51
HIDALGO DEL PARRAL	171.00	1	0	712	79.7	5.7	2.9	3.4	4.4	1.9	0.8	1.2	79.7	5.7	14.6	0.1	0.51
T. DER. JIMENEZ	179.50	0	0														

4 CARR : GOMEZ PALACIO - JIMENEZ

CLAVE: 00006

RUTA : MEX-049

AÑO : 2007

L U G A R	E S T A C I O N				C L A S I F I C A C I O N V E H I C U L A R E N P O R C I E N T O .												
	KM	TE	SC	TDPA	A	B	C2	C3	T3S2	T3S3	T3S2R4	OTROS	A	B	C	K'	D
GOMEZ PALACIO	0.00	3	1	9826	88.7	3.2	3.1	1.2	0.6	0.6	0.2	2.4	88.7	3.2	8.1	0.087	0.504
GOMEZ PALACIO	0.00	3	2	9862	86	3.1	4.8	1.4	1.1	1.1	0.1	2.4	86	3.1	10.9	0.08	0.504
X. C. LA TORREÑA - BRITTINGHAM	10.96	1	1	7807	78.6	5.3	5.4	3.5	1.5	1.4	0.5	3.8	78.6	5.3	16.1	0.1	0.504
X. C. LA TORREÑA - BRITTINGHAM	10.96	1	2	7583	80.9	4.9	5.6	2.9	1.8	1.4	0.5	2	80.9	4.9	14.2	0.107	0.504
T. IZQ. DINAMITA	26.27	1	1	4530	82.1	3.1	0	0.2	6	2.1	3.3	3.2	82.1	3.1	14.8	0.075	0.511
T. IZQ. DINAMITA	26.27	1	2	4711	84.7	2.5	0.2	0.3	5.2	1.7	2.5	2.9	84.7	2.5	12.8	0.073	0.511

DURANGO

4 CARR : GOMEZ PALACIO - JIMENEZ

CLAVE: 00006

RUTA : MEX-049

AÑO : 2007

L U G A R	E S T A C I O N				C L A S I F I C A C I O N V E H I C U L A R E N P O R C I E N T O .												
	KM	TE	SC	TDPA	A	B	C2	C3	T3S2	T3S3	T3S2R4	OTROS	A	B	C	K'	D
BERMEJILLO	39.30	1	0	7612	80.7	5.1	3.3	1.2	4.7	1.1	2.4	1.5	80.7	5.1	14.2	0.078	0.501
T. IZQ. ENT. LA ZARCA	40.89	3	0	7283	43.9	3.4	3.9	7.9	21.1	8.5	9.1	2.2	43.9	3.4	52.7	0.067	0.511
YERMO	108.00	1	0	6195	75.1	5.8	6.8	3.3	2.4	2.5	1.5	2.6	75.1	5.8	19.1	0.079	0.501
YERMO	108.00	3	0	5027	78.2	7.9	4.7	2.5	3.1	2.2	0.7	0.7	78.2	7.9	13.9	0.066	0.502
CEBALLOS	127.20	1	0	6839	77	4.3	5.9	3.1	4.1	2.2	2.2	1.2	77	4.3	18.7	0.079	0.501
CEBALLOS	127.20	3	0	7957	75.4	3.5	6.3	3.9	3.6	2.6	1.6	3.1	75.4	3.5	21.1	0.063	0.503
LIM. EDOS. TERM. DGO. PPIA. CHIH.	146.20	0	0														
ESTACION ESCALON	160.90	3	0	4974	73.2	3.9	7.1	5.2	3.5	2.6	2	2.5	73.2	3.9	22.9	0.078	0.502
JIMENEZ	234.00	0	0														

5 CARR : GOMEZ PALACIO - JIMENEZ (CUOTA)

CLAVE: 00016

RUTA : MEX-49

AÑO : 2007

L U G A R	E S T A C I O N				C L A S I F I C A C I O N V E H I C U L A R E N P O R C I E N T O .												
	KM	TE	SC	TDPA	A	B	C2	C3	T3S2	T3S3	T3S2R4	OTROS	A	B	C	K'	D
T. C. GOMEZ PALACIO - JIMENEZ (LIBRE)	0.00	0	0														
CASETA DE COBRO BERMEJILLO	5.00	2	0	2479													
CASETA DE COBRO CEBALLOS	89.00	2	0	2458													
LIM. EDOS. TERM. DGO. PPIA. CHIH.	112.00	0	0														
T. C. LIBRAMIENTO JIMENEZ	150.60	0	0														

6 CARR : GREGORIO GARCIA - FRANCISCO I. MADERO

CLAVE: 00110

RUTA : MEX

AÑO : 2007

L U G A R	E S T A C I O N				C L A S I F I C A C I O N V E H I C U L A R E N P O R C I E N T O .												
	KM	TE	SC	TDPA	A	B	C2	C3	T3S2	T3S3	T3S2R4	OTROS	A	B	C	K'	D
T. C. GOMEZ PALACIO - TLAHUAILLO	0.00	0	0														
LIM. EDOS. TERM. DGO. PPIA. COAH.	3.60	0	0														
FRANCISCO I. MADERO	9.60	1	0	5256	83.7	4.3	3.7	1.5	3.4	0.5	1.5	1.4	83.7	4.3	12	0.084	0.509

7 CARR : LIBRAMIENTO DE TORREON

CLAVE: 05516

RUTA : COA

AÑO : 2007

L U G A R	E S T A C I O N				C L A S I F I C A C I O N V E H I C U L A R E N P O R C I E N T O .												
	KM	TE	SC	TDPA	A	B	C2	C3	T3S2	T3S3	T3S2R4	OTROS	A	B	C	K'	D
T. C. DURANGO - TORREON	0.00	0	0														
X. C. SALTILLO - TORREON	6.70	1	1	11725	77.6	4.7	3.7	2.5	3.2	2.8	2.2	3.3	77.6	4.7	17.7	0.061	0.501
X. C. SALTILLO - TORREON	6.70	1	2	11770	77.7	4.8	4.1	2.9	3.3	2.8	2	2.4	77.7	4.8	17.5	0.062	0.501

DURANGO

7 CARR : LIBRAMIENTO DE TORREON

CLAVE: 05516

RUTA : COA

AÑO : 2007

L U G A R	E S T A C I O N				CLASIFICACION VEHICULAR EN PORCIENTO .												
	KM	TE	SC	TDPA	A	B	C2	C3	T3S2	T3S3	T3S2R4	OTROS	A	B	C	K'	D
X. C. SALTILLO - TORREON	6.70	3	1	11968	72.4	3.7	2.4	2.5	8	2.9	5.2	2.9	72.4	3.7	23.9	0.108	0.517
X. C. SALTILLO - TORREON	6.70	3	2	11190	73	3.5	2.3	2.3	8.4	3.4	4.6	2.5	73	3.5	23.5	0.083	0.517
T. C. LA CUCHILLA - TORREON	12.00	1	1	12079	73.3	3.5	2.7	3.9	8.5	2.7	3.6	1.8	73.3	3.5	23.2	0.125	0.509
T. C. LA CUCHILLA - TORREON	12.00	1	2	12538	73.9	3.9	2.4	3.1	8.3	2.6	3.7	2.1	73.9	3.9	22.2	0.081	0.509
LIM. EDOS. TERM. DGO. PPIA. COAH.	16.50	0	0														
T. C. CUENCAME - TORREON	43.00	0	0														

8 CARR : AMADO NERVO - LA OCHOA

CLAVE: 10012

RUTA : DGO-542

AÑO : 2007

L U G A R	E S T A C I O N				CLASIFICACION VEHICULAR EN PORCIENTO .												
	KM	TE	SC	TDPA	A	B	C2	C3	T3S2	T3S3	T3S2R4	OTROS	A	B	C	K'	D
AMADO NERVO	0.00	3	0	1318	84.5	6.5	4	1.5	0.7	1.2	1.1	0.5	84.5	6.5	9	0.079	0.5
VILLA UNION	25.00	1	0	2253	85.6	4.5	2.1	1.2	1.8	3.1	1.1	0.6	85.6	4.5	9.9	0.089	0.501
LA OCHOA	42.00	1	0	597	82.4	6.9	3.6	2.1	0.3	1.4	1	2.3	82.4	6.9	10.7	0.077	0.502

9 CARR : BERMEJILLO - EL PALMITO

CLAVE: 10105

RUTA : MEX-030

AÑO : 2007

L U G A R	E S T A C I O N				CLASIFICACION VEHICULAR EN PORCIENTO .												
	KM	TE	SC	TDPA	A	B	C2	C3	T3S2	T3S3	T3S2R4	OTROS	A	B	C	K'	D
BERMEJILLO	0.00	3	0	1849	82.6	5.4	3.9	2.6	3.6	0.7	0.6	0.6	82.6	5.4	12	0.079	0.509
SANTO DOMINGO	86.00	1	0	794	81.3	3.5	6.3	4.1	2.4	0.9	1	0.5	81.3	3.5	15.2	0.076	0.504
SANTO DOMINGO	86.00	3	0	446	80.8	4.8	7.4	3.2	1.8	1	0.8	0.2	80.8	4.8	14.4	0.085	0.501
ENT. LA ZARCA	120.00	1	0	455	77.1	5.2	8.2	4.9	2.1	1.3	0.9	0.3	77.1	5.2	17.7	0.086	0.504
ENT. LA ZARCA	120.00	3	0	232	84.5	4.7	5.5	1.6	1.2	1.4	0.6	0.5	84.5	4.7	10.8	0.155	0.51
EL PALMITO	160.00	1	0	160	83.5	2.1	8.1	2.6	1.3	0.6	1.3	0.5	83.5	2.1	14.4	0.144	0.514

10 CARR : CEBALLOS - EL MIRADOR

CLAVE: 10417

RUTA : DGO-044

AÑO : 2007

L U G A R	E S T A C I O N				CLASIFICACION VEHICULAR EN PORCIENTO .												
	KM	TE	SC	TDPA	A	B	C2	C3	T3S2	T3S3	T3S2R4	OTROS	A	B	C	K'	D
CEBALLOS	0.00	3	0	596	78.1	6	5.9	1	4	3.5	0.8	0.7	78.1	6	15.9	0.124	0.505
T. C. ENT. LA ZARCA - HIDALGO DEL PARRAL	113.50	1	0	289	87	2.3	6.2	2.7	1.2	0.6	0	0	87	2.3	10.7	0.131	0.513



DURANGO

13 CARR : DURANGO - GOMEZ PALACIO (CUOTA)

CLAVE: 10003

RUTA : MEX-040D

AÑO : 2007

L U G A R	E S T A C I O N				C L A S I F I C A C I O N V E H I C U L A R E N P O R C I E N T O .												
	KM	TE	SC	TDPA	A	B	C2	C3	T3S2	T3S3	T3S2R4	OTROS	A	B	C	K'	D
CASETA DE COBRO CUENCAME	143.20	2	2	1739													
X. C. CUENCAME - TORREON	180.00	1	1	1589	66.3	5	5.3	6.4	3.3	2	9.3	2.4	66.3	5	28.7	0.078	0.507
X. C. CUENCAME - TORREON	180.00	1	2	1584	66.1	5.3	4.5	7.7	4.4	2.1	8.8	1.1	66.1	5.3	28.6	0.094	0.507
X. C. CUENCAME - TORREON	180.00	3	1	1613	68.7	5.1	4.5	6.3	3.3	1.7	9.2	1.2	68.7	5.1	26.2	0.08	0.507
X. C. CUENCAME - TORREON	180.00	3	2	1614	65.2	5.2	3.9	7.5	3.7	2.4	9.3	2.8	65.2	5.2	29.6	0.089	0.507
CASETA DE COBRO "LEON GUZMAN"	212.70	1	1	1564	63	9.2	3.5	8.1	5.2	1.6	8.4	1	63	9.2	27.8	0.085	0.518
CASETA DE COBRO "LEON GUZMAN"	212.70	1	2	1633	65.5	9.1	2.3	7.1	5.2	1.8	8.2	0.8	65.5	9.1	25.4	0.076	0.518
CASETA DE COBRO "LEON GUZMAN"	212.70	3	1	1368	43	13.9	16.7	9.1	9.4	7	0.7	0.2	43	13.9	43.1	0.067	0.516
CASETA DE COBRO "LEON GUZMAN"	212.70	3	2	1414	51.5	8.2	7.1	8.2	10.6	3.8	8.4	2.2	51.5	8.2	40.3	0.064	0.516
T. C. GOMEZ PALACIO - JIMENEZ	220.00	0	0														

14 CARR : DURANGO - MEZQUITAL

CLAVE: 10423

RUTA : MEX-023

AÑO : 2007

L U G A R	E S T A C I O N				C L A S I F I C A C I O N V E H I C U L A R E N P O R C I E N T O .												
	KM	TE	SC	TDPA	A	B	C2	C3	T3S2	T3S3	T3S2R4	OTROS	A	B	C	K'	D
DURANGO	0.00	3	0	5776	83.2	3.1	3.9	2.4	1.3	3.1	1.4	1.6	83.2	3.1	13.7	0.074	0.541
GABINO SANTILLAN	8.00	3	0	3945	81.1	8	3.2	3	2.7	0.5	0.7	0.8	81.1	8	10.9	0.086	0.502
T. IZQ. MONTE MORELOS	13.00	3	0	2259	87.2	3	3.2	2.9	2.4	0.3	0.3	0.7	87.2	3	9.8	0.095	0.501
MEZQUITAL	82.00	1	0	2545	65.6	4.8	5.4	7.2	3.9	2.1	9.2	1.8	65.6	4.8	29.6	0.095	0.506

15 CARR : ENT. LOS HERRERA - TOPIA

CLAVE: 10090

RUTA : MEX-036

AÑO : 2007

L U G A R	E S T A C I O N				C L A S I F I C A C I O N V E H I C U L A R E N P O R C I E N T O .												
	KM	TE	SC	TDPA	A	B	C2	C3	T3S2	T3S3	T3S2R4	OTROS	A	B	C	K'	D
T. C. GUADALUPE AGUILERA - TEPEHUANES	0.00	3	0	615	82	4.7	3.2	3.5	3	2.8	0.3	0.5	82	4.7	13.3	0.101	0.502
LOS ALTARES	80.00	1	0	693	83.2	1.2	3.8	3.9	2.5	2.9	1.9	0.6	83.2	1.2	15.6	0.124	0.506
TOPIA	229.00	0	0														

16 CARR : GOMEZ PALACIO - LA UNION

CLAVE: 10009

RUTA : MEX

AÑO : 2007

L U G A R	E S T A C I O N				C L A S I F I C A C I O N V E H I C U L A R E N P O R C I E N T O .												
	KM	TE	SC	TDPA	A	B	C2	C3	T3S2	T3S3	T3S2R4	OTROS	A	B	C	K'	D
GOMEZ PALACIO	0.00	3	0	5812	80.6	4.3	1.1	5.4	4	1.3	1.8	1.5	80.6	4.3	15.1	0.073	0.502
X. C. TORREON - VILLA JUAREZ	4.30	3	0	2080	69.1	8.6	3.5	10.1	2.7	1.3	3	1.7	69.1	8.6	22.3	0.093	0.505
NAZARENO	20.90	1	0	2000	69.6	8.5	3.4	10	2.7	1.3	2.8	1.7	69.6	8.5	21.9	0.095	0.505



DURANGO

16 CARR : GOMEZ PALACIO - LA UNION

CLAVE: 10009

RUTA : MEX

AÑO : 2007

L U G A R	E S T A C I O N				C L A S I F I C A C I O N V E H I C U L A R E N P O R C I E N T O .												
	KM	TE	SC	TDPA	A	B	C2	C3	T3S2	T3S3	T3S2R4	OTROS	A	B	C	K'	D
NAZARENO	20.90	3	0	1539	76.3	3.7	12.9	3.5	1.9	0.7	0.3	0.7	76.3	3.7	20	0.083	0.504
LA UNION	42.20	1	0	877	75.7	2.7	3.6	9.4	5.8	0.8	1.7	0.3	75.7	2.7	21.6	0.106	0.519

17 CARR : GOMEZ PALACIO - TLAHUALILLO

CLAVE: 10005

RUTA : MEX

AÑO : 2007

L U G A R	E S T A C I O N				C L A S I F I C A C I O N V E H I C U L A R E N P O R C I E N T O .												
	KM	TE	SC	TDPA	A	B	C2	C3	T3S2	T3S3	T3S2R4	OTROS	A	B	C	K'	D
T. C. GOMEZ PALACIO - JIMENEZ	0.00	0	0														
T. IZQ. ESMERALDA	5.60	1	0	9492	74.5	4	2.7	2.1	7.4	1.8	4.8	2.7	74.5	4	21.5	0.071	0.522
T. IZQ. ESMERALDA	5.60	3	0	6512	80.8	3.8	3.9	1.5	4.8	1.1	2.5	1.6	80.8	3.8	15.4	0.086	0.502
GREGORIO GARCIA	26.00	3	0	3263	76	9.4	3.9	3.1	3.6	1.2	1.7	1.1	76	9.4	14.6	0.119	0.507
T. IZQ. ESMERALDA	31.44	1	0	4643	81.7	5.5	1.6	1.8	4.2	1.2	2.2	1.8	81.7	5.5	12.8	0.096	0.502
SAN FRANCISCO	48.90	1	0	2372	77.6	5.3	5.9	6.8	2.8	0.6	0.5	0.5	77.6	5.3	17.1	0.086	0.501
SAN FRANCISCO	48.90	3	0	2088	78	6.1	5.9	6	2.5	0.5	0.5	0.5	78	6.1	15.9	0.086	0.501
TLAHUALILLO	72.90	1	0	2993	80.1	3.2	3	2.8	4.6	1.6	2.4	2.3	80.1	3.2	16.7	0.078	0.502

18 CARR : GUADALUPE AGUILERA - TEPEHUANES

CLAVE: 10220

RUTA : MEX-023

AÑO : 2007

L U G A R	E S T A C I O N				C L A S I F I C A C I O N V E H I C U L A R E N P O R C I E N T O .												
	KM	TE	SC	TDPA	A	B	C2	C3	T3S2	T3S3	T3S2R4	OTROS	A	B	C	K'	D
GUADALUPE AGUILERA	0.00	3	0	3696	82	4	2	2.6	4.5	2	1.4	1.5	82	4	14	0.102	0.504
CANATLAN	14.00	3	0	2604	75.3	2.3	1.3	5.3	3.1	1.3	5.2	6.2	75.3	2.3	22.4	0.087	0.506
T. DER. CONETO DE COMONFORT	41.60	1	0	2204	85.7	3.1	2.8	2.3	2.7	2.1	0.6	0.7	85.7	3.1	11.2	0.083	0.502
LA SOLEDAD	45.80	3	0	2387	83.5	3.6	5.2	2.3	2.5	1.9	0.5	0.5	83.5	3.6	12.9	0.088	0.502
JOSE MARIA MORELOS	90.20	1	0	2024	85.5	3.3	3.5	1.8	2.8	2	0.5	0.6	85.5	3.3	11.2	0.087	0.503
SANTIAGO PAPASQUIARO	117.00	3	0	5075	86.9	2.2	1.2	1.8	4.4	1	1.1	1.4	86.9	2.2	10.9	0.094	0.502
LAS HERRERAS	133.00	3	0	928	88.4	2.8	4	1.7	1.8	0.8	0.1	0.4	88.4	2.8	8.8	0.106	0.539
TEPEHUANES	169.00	1	0	1135	91	1.3	3.2	1.4	1.7	0.6	0.2	0.6	91	1.3	7.7	0.137	0.548

19 CARR : JABONOSO - ESMERALDA

CLAVE: 10004

RUTA : DGO-363

AÑO : 2007

L U G A R	E S T A C I O N				C L A S I F I C A C I O N V E H I C U L A R E N P O R C I E N T O .												
	KM	TE	SC	TDPA	A	B	C2	C3	T3S2	T3S3	T3S2R4	OTROS	A	B	C	K'	D
JABONOSO	0.00	3	0	8665	79.9	4.4	1.2	5.4	4.2	1.4	1.9	1.6	79.9	4.4	15.7	0.061	0.554
T. IZQ. CHIMAL	10.00	3	0	3223	79.5	6	0.8	5.9	3.8	1	1.8	1.2	79.5	6	14.5	0.094	0.501

DURANGO

19 CARR : JABONOSO - ESMERALDA

CLAVE: 10004

RUTA : DGO-363

AÑO : 2007

L U G A R	E S T A C I O N				C L A S I F I C A C I O N V E H I C U L A R E N P O R C I E N T O .												
	KM	TE	SC	TDPA	A	B	C2	C3	T3S2	T3S3	T3S2R4	OTROS	A	B	C	K'	D
ESMERALDA	16.30	1	0	2514	69.5	8.6	3.5	10	2.7	1.3	2.8	1.6	69.5	8.6	21.9	0.095	0.505

20 CARR : LA TORREÑA - BRITTINGHAM

CLAVE: 10010

RUTA : DGO-325

AÑO : 2007

L U G A R	E S T A C I O N				C L A S I F I C A C I O N V E H I C U L A R E N P O R C I E N T O .												
	KM	TE	SC	TDPA	A	B	C2	C3	T3S2	T3S3	T3S2R4	OTROS	A	B	C	K'	D
LA TORREÑA	0.00	3	0	2127	69.3	8.5	3.4	10.1	2.8	1.4	2.8	1.7	69.3	8.5	22.2	0.086	0.505
X. C. GOMEZ PALACIO - JIMENEZ	7.00	1	0	1467	72.2	15	2.1	6	1.8	0.8	1.1	1	72.2	15	12.8	0.088	0.505
X. C. GOMEZ PALACIO - JIMENEZ	7.00	3	0	1936	68.4	8.6	3.6	10	3	1.5	3.1	1.8	68.4	8.6	23	0.085	0.505
CHIMAL	16.00	1	0	1396	76.3	6.8	5.1	6.5	2.7	0.4	1.2	1	76.3	6.8	16.9	0.094	0.503
CHIMAL	16.00	3	0	1176	85.9	4.6	6.4	1.6	0.7	0.4	0	0.4	85.9	4.6	9.5	0.094	0.529
BRITTINGHAM	33.00	1	0	683	74.3	2.9	3.9	9.6	6.1	0.9	1.9	0.4	74.3	2.9	22.8	0.116	0.518

21 CARR : LIBRAMIENTO CUENCAME

CLAVE: 10006

RUTA : MEX

AÑO : 2007

L U G A R	E S T A C I O N				C L A S I F I C A C I O N V E H I C U L A R E N P O R C I E N T O .												
	KM	TE	SC	TDPA	A	B	C2	C3	T3S2	T3S3	T3S2R4	OTROS	A	B	C	K'	D
T. C. LA CHICHARRONA - CUENCAME	0.00	3	0	2608	62.2	4.3	2.6	3.9	13.9	6.2	5.1	1.8	62.2	4.3	33.5	0.07	0.508
T. C. DURANGO - TORREON	2.60	3	0	2380	60.1	6.2	2.7	4	13.8	6.1	5.4	1.7	60.1	6.2	33.7	0.076	0.51
T. C. DURANGO - TORREON	5.00	0	0														

22 CARR : PEDRICEÑA - ENT. RODEO

CLAVE: 10002

RUTA : MEX-032

AÑO : 2007

L U G A R	E S T A C I O N				C L A S I F I C A C I O N V E H I C U L A R E N P O R C I E N T O .												
	KM	TE	SC	TDPA	A	B	C2	C3	T3S2	T3S3	T3S2R4	OTROS	A	B	C	K'	D
T. C. CUENCAME - TORREON	0.00	3	0	1676	85.3	3.8	3.3	3.3	2.3	0.9	0.7	0.4	85.3	3.8	10.9	0.08	0.502
NAZAS	45.00	1	0	1685	88.7	4.4	1.7	1.6	2.2	0.6	0.3	0.5	88.7	4.4	6.9	0.099	0.501
NAZAS	45.00	3	0	1574	89.3	3.2	1.4	1.7	2.5	0.8	0.4	0.7	89.3	3.2	7.5	0.085	0.505
T. C. (DURANGO - ENT. LA ZARCA)-ENT. RODEO	98.00	1	0	824	87.6	1.2	2.3	1.9	2.5	1.9	0.9	1.7	87.6	1.2	11.2	0.095	0.512

23 CARR : RAMAL A SAN JUAN DEL RIO

CLAVE: 10001

RUTA : DGO-290

AÑO : 2007

L U G A R	E S T A C I O N				C L A S I F I C A C I O N V E H I C U L A R E N P O R C I E N T O .												
	KM	TE	SC	TDPA	A	B	C2	C3	T3S2	T3S3	T3S2R4	OTROS	A	B	C	K'	D
T. C. DURANGO - ENT. LA ZARCA	0.00	3	0	1909	88.4	2.5	2.8	2.7	1.4	1.2	0.8	0.2	88.4	2.5	9.1	0.092	0.5

DURANGO

23 CARR : RAMAL A SAN JUAN DEL RIO

CLAVE: 10001

RUTA : DGO-290

AÑO : 2007

L U G A R	E S T A C I O N				C L A S I F I C A C I O N V E H I C U L A R E N P O R C I E N T O .												
	KM	TE	SC	TDPA	A	B	C2	C3	T3S2	T3S3	T3S2R4	OTROS	A	B	C	K'	D
SAN JUAN DEL RIO	5.00	1	0	2080	88	2.2	3	1.8	1.5	1.7	1	0.8	88	2.2	9.8	0.105	0.514

24 CARR : RAMAL A SANTA CLARA

CLAVE: 10287

RUTA : MEX

AÑO : 2007

L U G A R	E S T A C I O N				C L A S I F I C A C I O N V E H I C U L A R E N P O R C I E N T O .												
	KM	TE	SC	TDPA	A	B	C2	C3	T3S2	T3S3	T3S2R4	OTROS	A	B	C	K'	D
T. C. ENT. LA CHICHARRONA - CUENCAME	0.00	3	0	780	82.8	0.8	11.6	3.5	0.1	0.7	0.2	0.3	82.8	0.8	16.4	0.092	0.507
SANTA CLARA	14.00	0	0														

25 CARR : SUCHIL - VILLA UNION

CLAVE: 10419

RUTA : DGO-241

AÑO : 2007

L U G A R	E S T A C I O N				C L A S I F I C A C I O N V E H I C U L A R E N P O R C I E N T O .												
	KM	TE	SC	TDPA	A	B	C2	C3	T3S2	T3S3	T3S2R4	OTROS	A	B	C	K'	D
SUCHIL	0.00	3	0	2055	80.5	4.2	5.9	2.9	3.2	1.9	0.8	0.6	80.5	4.2	15.3	0.083	0.501
VICENTE GUERRERO	13.40	1	0	1561	79.4	3	4.1	2.7	3.8	4.1	1.7	1.2	79.4	3	17.6	0.091	0.502
X. C. ZACATECAS - DURANGO	14.50	1	1	1723	79.6	3.5	9.9	2.1	1.4	2.1	0.9	0.5	79.6	3.5	16.9	0.081	0.503
X. C. ZACATECAS - DURANGO	14.50	1	2	1702	80.7	3.9	5.9	2.8	3.2	2	0.9	0.6	80.7	3.9	15.4	0.093	0.503
X. C. ZACATECAS - DURANGO	14.50	3	0	1708	81.6	2.7	6	3	3.2	1.9	0.9	0.7	81.6	2.7	15.7	0.099	0.5
VILLA UNION	41.40	1	0	1621	80.5	4.2	5.8	3	3.4	1.9	0.6	0.6	80.5	4.2	15.3	0.084	0.503

26 CARR : YERBANIS - PEÑON BLANCO

CLAVE: 10032

RUTA : DGO-316

AÑO : 2007

L U G A R	E S T A C I O N				C L A S I F I C A C I O N V E H I C U L A R E N P O R C I E N T O .												
	KM	TE	SC	TDPA	A	B	C2	C3	T3S2	T3S3	T3S2R4	OTROS	A	B	C	K'	D
YERBANIS	0.00	3	0	757	89.7	3.7	2.9	1.5	0.9	0.8	0.2	0.3	89.7	3.7	6.6	0.103	0.51
PEÑON BLANCO	22.00	1	0	551	81.9	4.5	2.7	2.9	3.4	1.8	0.8	2	81.9	4.5	13.6	0.093	0.506

27 CARR : ENT. LA CHICHARRONA - CUENCAME

CLAVE: 00152

RUTA : MEX-049

AÑO : 2007

L U G A R	E S T A C I O N				C L A S I F I C A C I O N V E H I C U L A R E N P O R C I E N T O .												
	KM	TE	SC	TDPA	A	B	C2	C3	T3S2	T3S3	T3S2R4	OTROS	A	B	C	K'	D
ENT. LA CHICHARRONA	0.00	3	1	4056	84.4	4.3	3.2	2.1	2	1.6	1.4	1	84.4	4.3	11.3	0.077	0.503
ENT. LA CHICHARRONA	0.00	3	2	4104	81.7	5.5	4.3	2.6	2.1	1.9	1	0.9	81.7	5.5	12.8	0.074	0.503
T. DER. CAÑITAS DE FELIPE PESCADOR	25.86	1	1	2967	74.2	6.5	5.9	3.1	4.1	4.6	1	0.6	74.2	6.5	19.3	0.097	0.5
T. DER. CAÑITAS DE FELIPE PESCADOR	25.86	1	2	2964	71.8	6.9	6.6	4.8	3.8	4.5	0.9	0.7	71.8	6.9	21.3	0.095	0.5

DURANGO

27 CARR : ENT. LA CHICHARRONA - CUENCAME

CLAVE: 00152

RUTA : MEX-049

AÑO : 2007

L U G A R	E S T A C I O N			C L A S I F I C A C I O N V E H I C U L A R E N P O R C I E N T O .															
	KM	TE	SC TDPA	A	B	C2	C3	T3S2	T3S3	T3S2R4	OTROS	A	B	C	K'	D			
RIO GRANDE	60.00	1	0 5875	81.8	4.6	3	3.7	2.4	1.4	1.5	1.6	81.8	4.6	13.6	0.074	0.509			
RIO GRANDE	60.00	3	0 6512	76.2	4.4	4.8	4.9	3.2	3.9	1.4	1.2	76.2	4.4	19.4	0.084	0.501			
T. DER. NIEVES	78.00	3	0 6734	84.1	2.6	3.9	3.3	1.9	1.7	1.1	1.4	84.1	2.6	13.3	0.083	0.504			
X. C. JUAN ALDAMA - MIGUEL AUZA	124.50	1	0 5635	67.3	8.4	6.7	4.6	5.7	4.7	1.2	1.4	67.3	8.4	24.3	0.084	0.501			
X. C. JUAN ALDAMA - MIGUEL AUZA	124.50	3	0 6437	83.9	2.6	4	3.4	1.9	1.7	1.1	1.4	83.9	2.6	13.5	0.082	0.503			
LIM. EDOS. TERM. ZAC. PPIA. DGO.	134.30	0	0																
T. DER. SANTA CLARA	144.00	1	0 4571	43.5	5.4	3.7	7.8	20.5	7.2	10.3	1.6	43.5	5.4	51.1	0.071	0.501			
T. DER. SANTA CLARA	144.00	3	0 4223	61.3	7.3	9.1	6.6	8.1	4.1	1.8	1.7	61.3	7.3	31.4	0.064	0.515			
CUENCAME	199.10	1	0 4378	64.9	5.6	3.8	5.4	10.9	4.3	4.2	0.9	64.9	5.6	29.5	0.075	0.503			

28 CARR : HIDALGO DEL PARRAL - GUADALUPE Y CALVO

CLAVE: 00802

RUTA : MEX-024

AÑO : 2007

L U G A R	E S T A C I O N			C L A S I F I C A C I O N V E H I C U L A R E N P O R C I E N T O .															
	KM	TE	SC TDPA	A	B	C2	C3	T3S2	T3S3	T3S2R4	OTROS	A	B	C	K'	D			
T. C. HIDALGO DEL PARRAL - SANTA BARBARA	0.00	3	0 2075	79	4.3	3.4	3.8	4.4	2.7	1.1	1.3	79	4.3	16.7	0.081	0.511			
T. DER. GUACHOCHIC	35.00	1	0 1626	79.1	4.1	3.6	1.9	5	3.3	1.4	1.6	79.1	4.1	16.8	0.08	0.508			
T. DER. GUACHOCHIC	35.00	3	0 667	75.2	5.1	6.3	3.3	4.5	3.9	0.9	0.8	75.2	5.1	19.7	0.097	0.512			
LIM. EDOS. TERM. CHIH. PPIA. DGO	38.00	0	0																
LIM. EDOS. TERM. DGO. PPIA. CHIH.	57.00	0	0																
EL VERGEL	110.00	1	0 770	78.9	5.1	5.9	3.1	3.3	2.5	0.5	0.7	78.9	5.1	16	0.108	0.505			
PUERTO SABINAL	212.00	1	0 1120	81.5	4.7	2.7	0.5	5.9	2	2.1	0.6	81.5	4.7	13.8	0.078	0.505			
GUADALUPE Y CALVO	234.00	0	0																

29 CARR : ZACATECAS - DURANGO

CLAVE: 00544

RUTA : MEX-045

AÑO : 2007

L U G A R	E S T A C I O N			C L A S I F I C A C I O N V E H I C U L A R E N P O R C I E N T O .															
	KM	TE	SC TDPA	A	B	C2	C3	T3S2	T3S3	T3S2R4	OTROS	A	B	C	K'	D			
ZACATECAS	0.00	0	0																
T. IZQ. GUADALAJARA	6.40	3	1 9739	75.9	4.7	8.4	3.3	3.1	1.9	1	1.7	75.9	4.7	19.4	0.069	0.501			
T. IZQ. GUADALAJARA	6.40	3	2 9616	74.5	6	7.4	4	3.8	2.1	0.7	1.5	74.5	6	19.5	0.075	0.501			
T. DER. SALTILLO (T. MORELOS)	15.00	3	1 9592	74.9	5.1	5.4	5.5	4	2.5	1.8	0.8	74.9	5.1	20	0.071	0.504			
T. DER. SALTILLO (T. MORELOS)	15.00	3	2 9564	75.3	7.1	7.2	3.4	2.9	2.1	1.4	0.6	75.3	7.1	17.6	0.077	0.504			
VICTOR ROSALES	28.00	1	1 7203	76.2	11.1	3.6	3.7	2	2.2	1	0.2	76.2	11.1	12.7	0.079	0.501			
VICTOR ROSALES	28.00	1	2 7171	73.6	10.9	5.4	2	4.1	2.9	1.1	0	73.6	10.9	15.5	0.075	0.501			
GRAL. ENRIQUE ESTRADA	34.60	3	1 8398	69.1	5.2	5.1	3	9.2	3.1	4	1.3	69.1	5.2	25.7	0.075	0.506			

DURANGO

29 CARR : ZACATECAS - DURANGO

CLAVE: 00544

RUTA : MEX-045

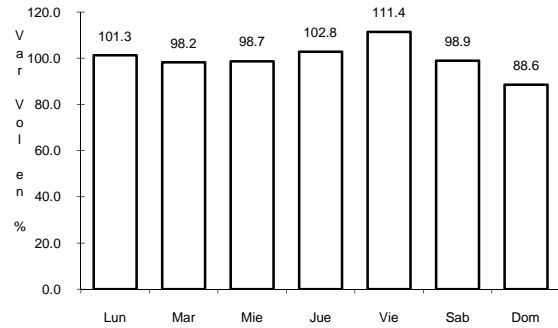
AÑO : 2007

L U G A R	E S T A C I O N				C L A S I F I C A C I O N V E H I C U L A R E N P O R C I E N T O .												
	KM	TE	SC	TDPA	A	B	C2	C3	T3S2	T3S3	T3S2R4	OTROS	A	B	C	K'	D
GRAL. ENRIQUE ESTRADA	34.60	3	2	8593	70.4	4.8	5.1	2.9	8.1	3.7	3.9	1.1	70.4	4.8	24.8	0.071	0.506
FRESNILLO	58.50	1	1	5812	67	7	1.7	4.1	10.7	2.7	6.2	0.6	67	7	26	0.076	0.505
FRESNILLO	58.50	1	2	5927	65.9	5.2	2	4.9	11.2	3.6	6.5	0.7	65.9	5.2	28.9	0.081	0.505
ENT. LA CHICHARRONA	74.30	1	1	5805	69.8	4	3.1	5.7	9.4	3.3	3.8	0.9	69.8	4	26.2	0.085	0.501
ENT. LA CHICHARRONA	74.30	1	2	5771	67.7	4	3	5.5	9.6	4.1	4.7	1.4	67.7	4	28.3	0.076	0.501
ENT. LA CHICHARRONA	74.30	3	0	4971	83.4	5.2	3	2.2	2.2	1.7	1.4	0.9	83.4	5.2	11.4	0.096	0.501
T. DER. SAIN ALTO	121.00	3	0	2512	88.3	2.6	3.5	2.7	1.3	1.1	0.4	0.1	88.3	2.6	9.1	0.112	0.503
T. IZQ. SOMBRERETE (2° ACCESO)	161.50	3	0	4076	81.1	4.1	5.3	2.8	3.2	1.9	1.2	0.4	81.1	4.1	14.8	0.087	0.501
LIM. EDOS. TERM. ZAC. PPIA. DGO.	190.10	0	0														
X. C. VICENTE GUERRERO - VILLA UNION	207.00	1	0	2620	74.7	7.5	5.8	3	3.3	3.5	1.4	0.8	74.7	7.5	17.8	0.087	0.526
X. C. VICENTE GUERRERO - VILLA UNION	207.00	3	0	3170	75.8	8.2	5.9	3	3.2	2.1	1.1	0.7	75.8	8.2	16	0.09	0.501
T. IZQ. GRACEROS	210.00	1	0	3183	75.6	8.6	5.9	2.9	3.2	2.1	1	0.7	75.6	8.6	15.8	0.09	0.504
AMADO NERVO	231.50	1	0	2745	70.5	9.3	5.2	4.8	4.8	2.8	1.8	0.8	70.5	9.3	20.2	0.09	0.502
AMADO NERVO	231.50	3	0	3646	87.9	3.4	4.8	1.1	0.1	1.2	1.5	0	87.9	3.4	8.7	0.078	0.5
NOMBRE DE DIOS	236.80	1	0	3642	74.1	6.3	7.2	2.7	1.3	6.5	1.5	0.4	74.1	6.3	19.6	0.081	0.504
NOMBRE DE DIOS	236.80	3	0	4842	75.6	5.4	3.8	4.8	3.7	2.4	2.6	1.7	75.6	5.4	19	0.085	0.502
T. DER. CONSTANCIA	240.60	3	0	3392	71.8	6.3	4.8	6	4.2	2.5	2.5	1.9	71.8	6.3	21.9	0.088	0.501
T. DER. TUITAN	250.80	3	0	4340	75	6.3	4.9	4.1	3.9	2.1	2.4	1.3	75	6.3	18.7	0.075	0.501
T. DER. INDEPENDENCIA Y LIBERTAD	261.70	1	0	4086	77.5	5.2	5.2	4.3	3.6	2.4	1	0.8	77.5	5.2	17.3	0.104	0.502
T. DER. INDEPENDENCIA Y LIBERTAD	261.70	3	0	4642	74.4	7.5	4.9	4.1	3.1	2.6	1.4	2	74.4	7.5	18.1	0.075	0.503
T. IZQ. PARRAS DE LA FUENTE	276.60	3	1	2513	86.5	3.2	3.7	2.1	1.3	2.1	1.1	0	86.5	3.2	10.3	0.087	0.501
T. IZQ. PARRAS DE LA FUENTE	276.60	3	2	2520	86.3	3.3	3.6	2.3	1.4	1.9	1.2	0	86.3	3.3	10.4	0.089	0.501
T. DER. PERIFERICO DURANGO	278.80	1	1	3160	84.7	3.2	4.5	2.6	2.5	1	0.5	1	84.7	3.2	12.1	0.115	0.502
T. DER. PERIFERICO DURANGO	278.80	1	2	3139	83.5	5.2	4.2	2.7	2	0.8	0.6	1	83.5	5.2	11.3	0.112	0.502
DURANGO	287.30	1	1	3348	74.5	5.1	7	2.7	2.9	4.2	3	0.6	74.5	5.1	20.4	0.07	0.5
DURANGO	287.30	1	2	3345	74.6	5.2	6.9	2.8	3.2	4.1	2.9	0.3	74.6	5.2	20.2	0.074	0.5

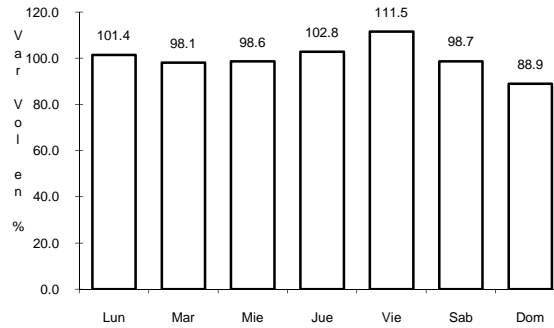
1 CARR: DURANGO - TORREON

CLAVE: 10085

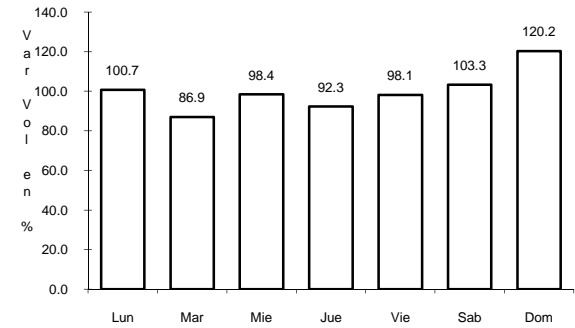
RUTA: MEX-040



Km: 0.00 Tipo: 3 Sent: 1



Km: 0.00 Tipo: 3 Sent: 2

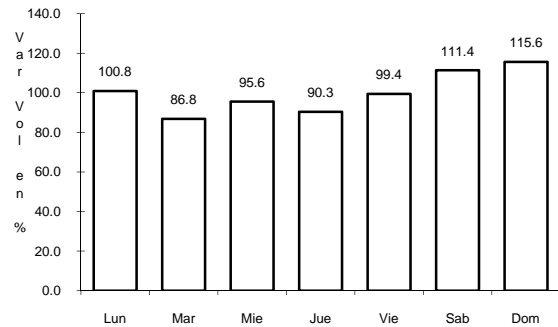


Km: 120.90 Tipo: 1 Sent: 0

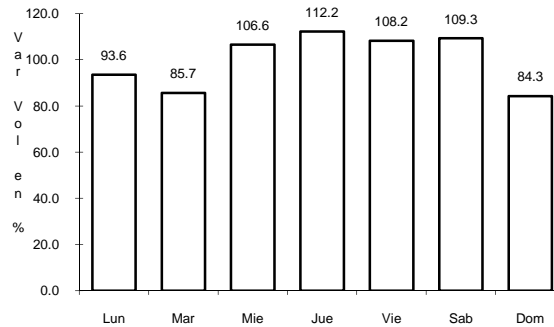
2 CARR: DURANGO - VILLA UNION

CLAVE: 00083

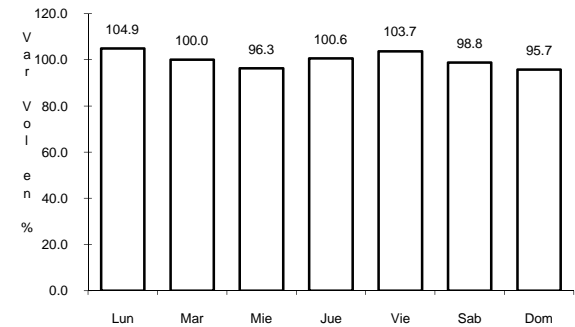
RUTA: MEX-040



Km: 0.00 Tipo: 3 Sent: 0



Km: 145.50 Tipo: 1 Sent: 0

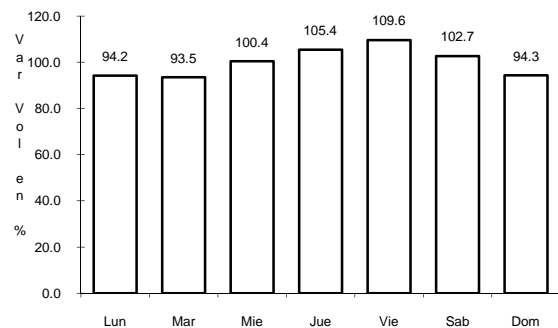


Km: 294.40 Tipo: 1 Sent: 0

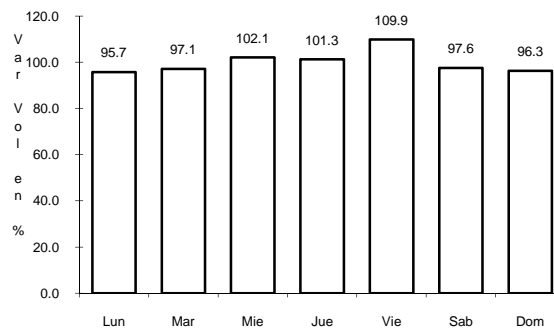
3 CARR: ENT. LA ZARCA - HIDALGO DEL PARRAL

CLAVE: 00488

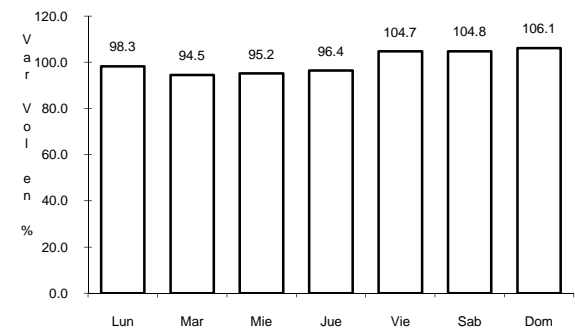
RUTA: MEX-045



Km: 0.00 Tipo: 3 Sent: 0



Km: 92.35 Tipo: 3 Sent: 0



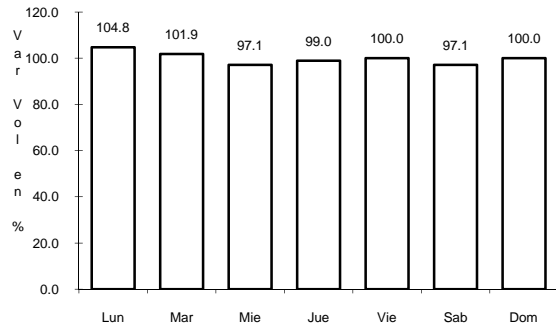
Km: 171.00 Tipo: 1 Sent: 0



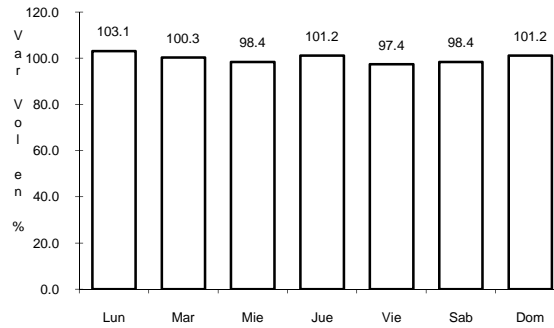
8 CARR: AMADO NERVO - LA OCHOA

CLAVE: 10012

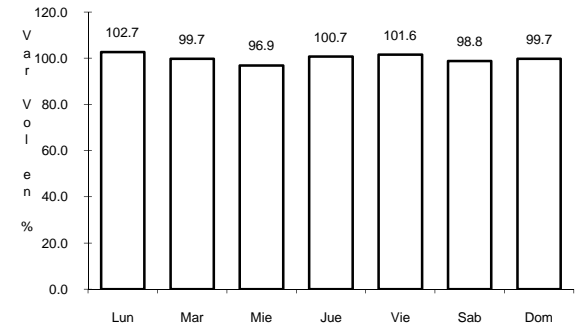
RUTA: DGO-542



Km: 0.00 Tipo: 3 Sent: 0



Km: 25.00 Tipo: 1 Sent: 0

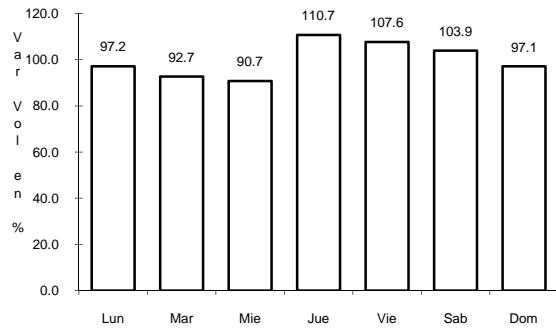


Km: 42.00 Tipo: 1 Sent: 0

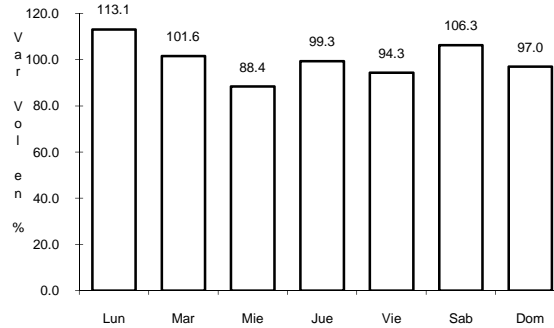
9 CARR: BERMEJILLO - EL PALMITO

CLAVE: 10105

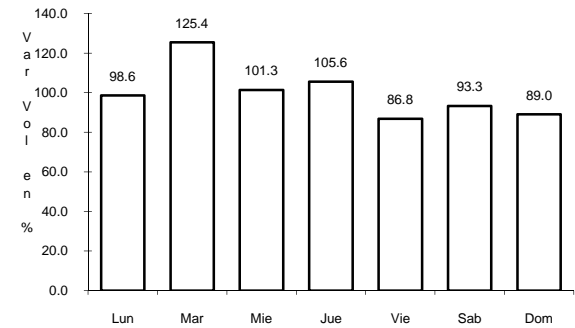
RUTA: MEX-030



Km: 0.00 Tipo: 3 Sent: 0



Km: 86.00 Tipo: 1 Sent: 0

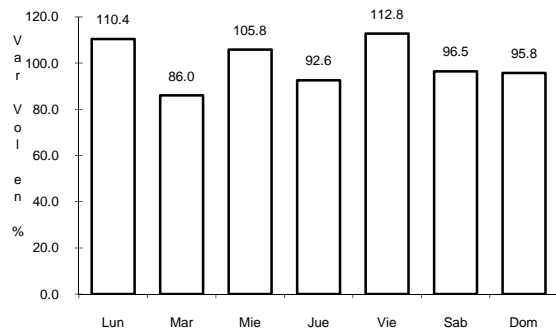


Km: 160.00 Tipo: 1 Sent: 0

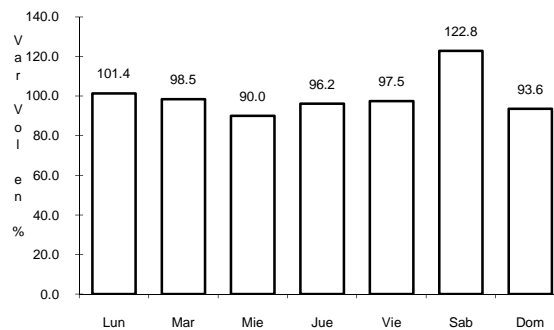
10 CARR: CEBALLOS - EL MIRADOR

CLAVE: 10417

RUTA: DGO-044



Km: 0.00 Tipo: 3 Sent: 0



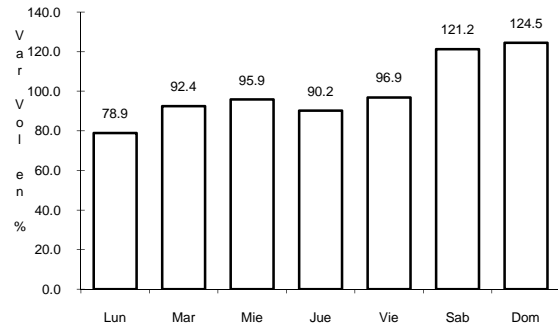
Km: 113.50 Tipo: 1 Sent: 0



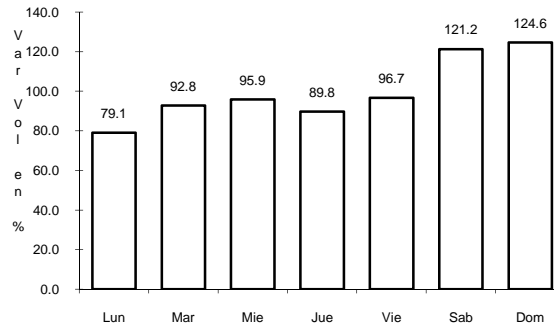
11 CARR: DURANGO - ASERRADERO LA FLOR

CLAVE: 10422

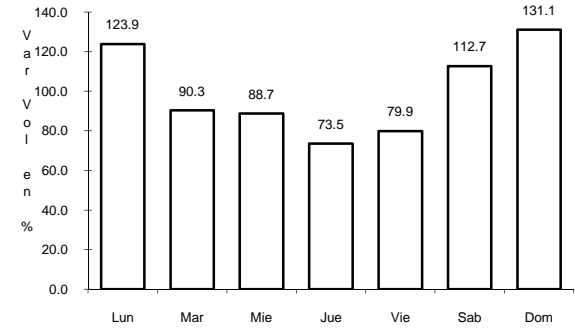
ruta: DGO-115



Km: 0.00 Tipo: 3 Sent: 1



Km: 0.00 Tipo: 3 Sent: 2

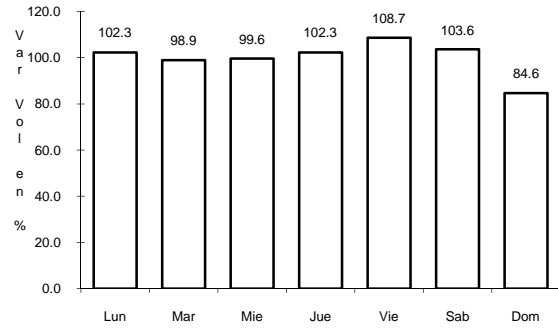


Km: 39.00 Tipo: 1 Sent: 0

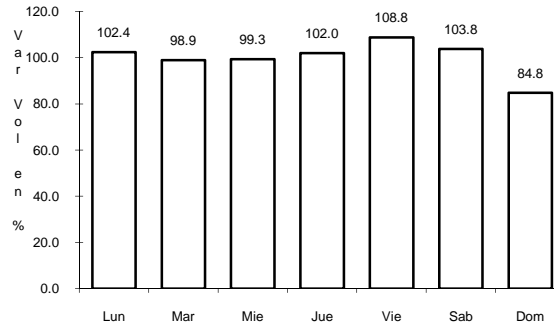
12 CARR: DURANGO - ENT. LA ZARCA

CLAVE: 10016

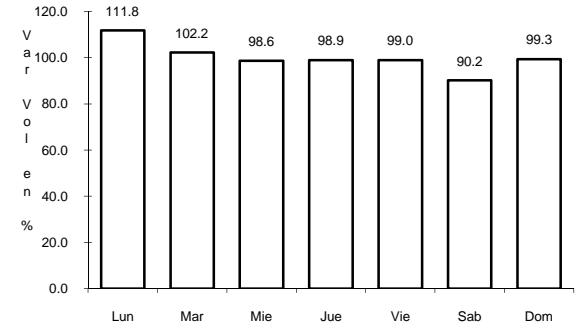
ruta: MEX-045



Km: 0.00 Tipo: 3 Sent: 1



Km: 0.00 Tipo: 3 Sent: 2

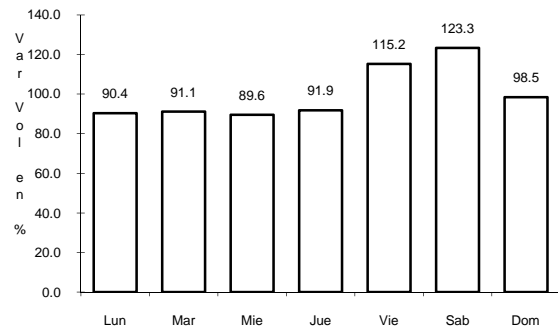


Km: 239.50 Tipo: 1 Sent: 0

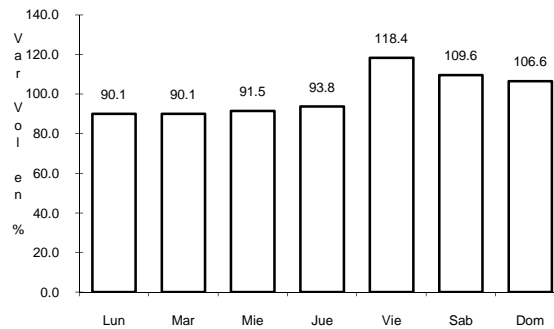
13 CARR: DURANGO - GOMEZ PALACIO (CUOTA)

CLAVE: 10003

ruta: MEX-040D



Km: 180.00 Tipo: 1 Sent: 1

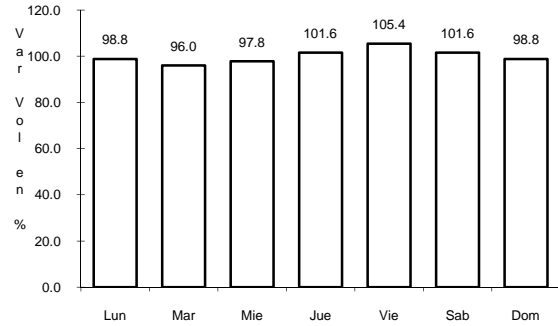


Km: 180.00 Tipo: 1 Sent: 2

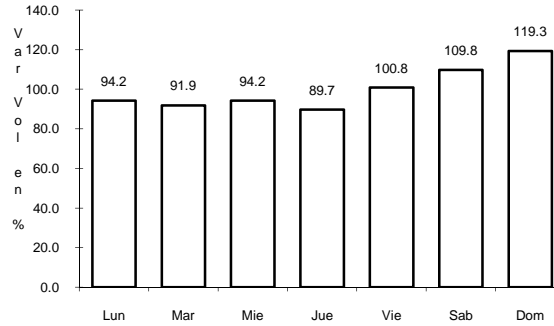
14 CARR: DURANGO - MEZQUITAL

CLAVE: 10423

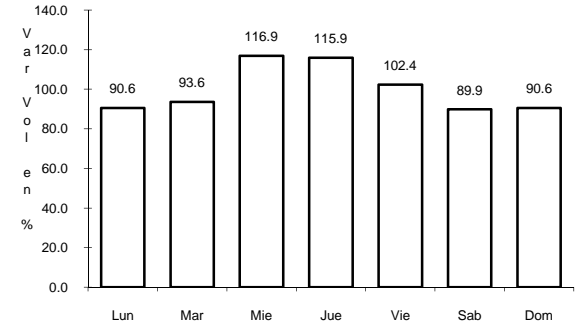
RUTA: MEX-023



Km: 0.00 Tipo: 3 Sent: 0



Km: 13.00 Tipo: 3 Sent: 0

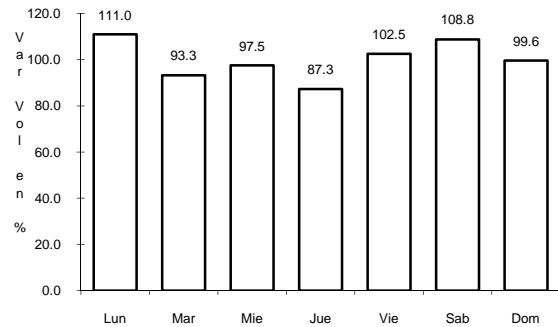


Km: 82.00 Tipo: 1 Sent: 0

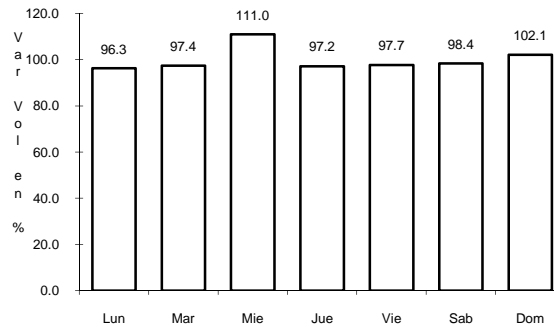
15 CARR: ENT. LOS HERRERA - TOPIA

CLAVE: 10090

RUTA: MEX-036



Km: 0.00 Tipo: 3 Sent: 0

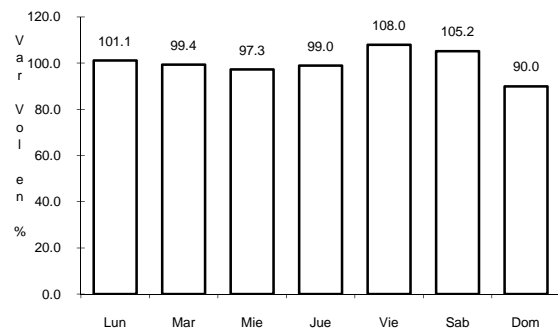


Km: 80.00 Tipo: 1 Sent: 0

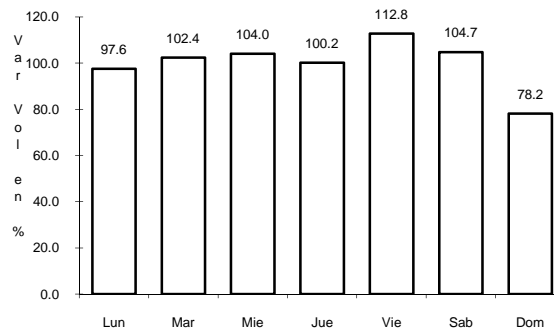
16 CARR: GOMEZ PALACIO - LA UNION

CLAVE: 10009

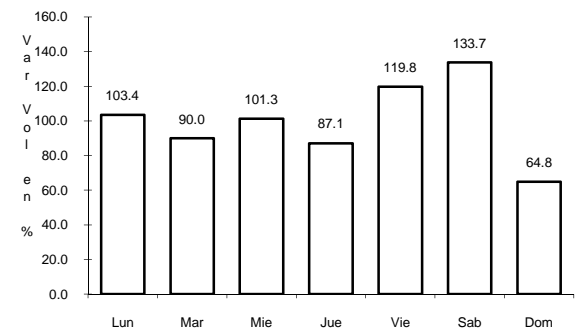
RUTA: MEX



Km: 0.00 Tipo: 3 Sent: 0



Km: 20.90 Tipo: 1 Sent: 0

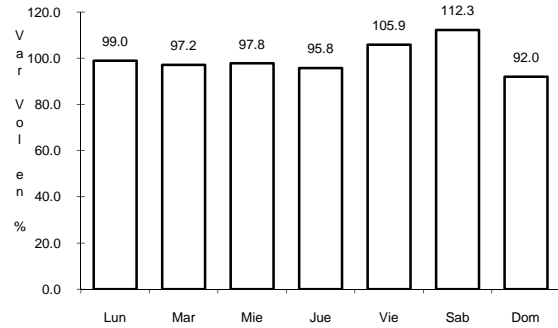


Km: 42.20 Tipo: 1 Sent: 0

17 CARR: GOMEZ PALACIO - TLAHUALILLO

CLAVE: 10005

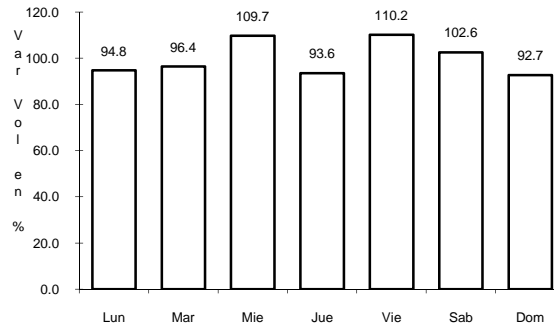
RUTA: MEX



Km: 5.60

Tipo: 1

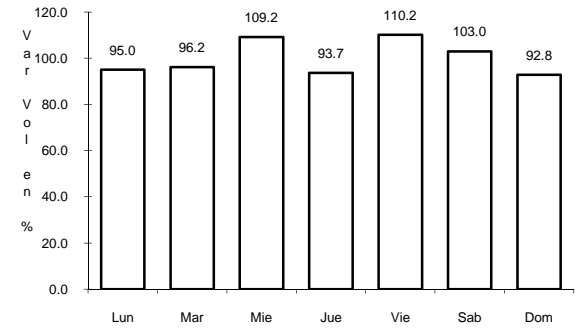
Sent: 0



Km: 31.44

Tipo: 1

Sent: 0



Km: 72.90

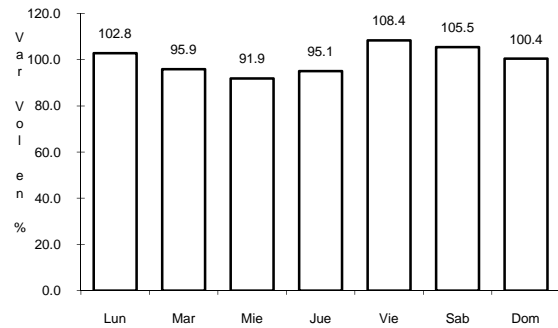
Tipo: 1

Sent: 0

18 CARR: GUADALUPE AGUILERA - TEPEHUANES

CLAVE: 10220

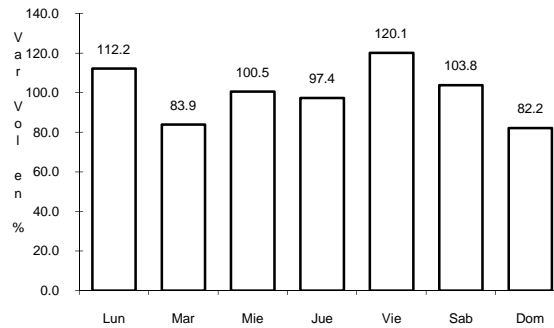
RUTA: MEX-023



Km: 0.00

Tipo: 3

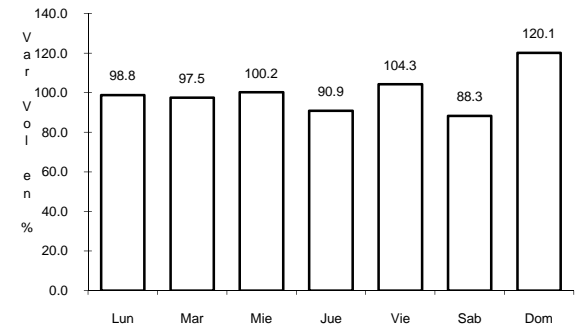
Sent: 0



Km: 45.80

Tipo: 3

Sent: 0



Km: 169.00

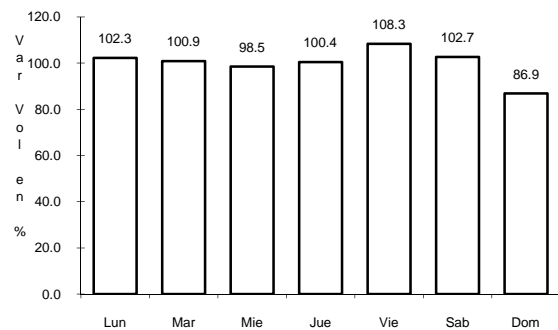
Tipo: 1

Sent: 0

19 CARR: JABONOSO - ESMERALDA

CLAVE: 10004

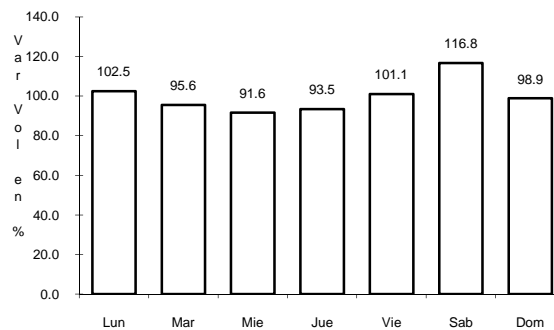
RUTA: DGO-363



Km: 0.00

Tipo: 3

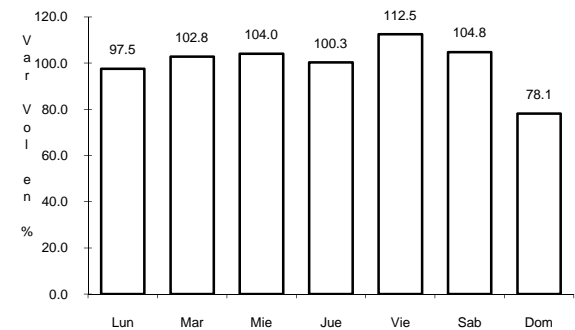
Sent: 0



Km: 10.00

Tipo: 3

Sent: 0



Km: 16.30

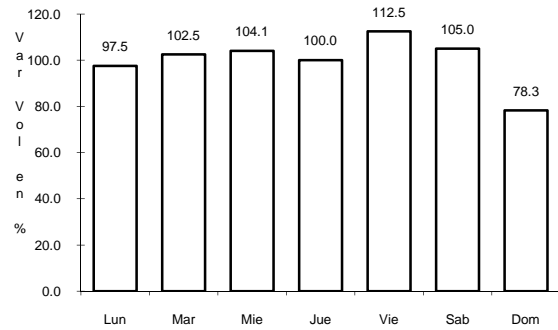
Tipo: 1

Sent: 0

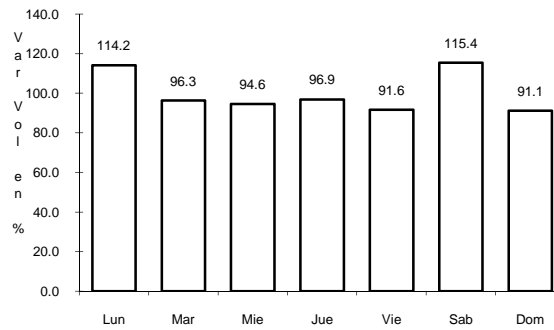
20 CARR: LA TORREÑA - BRITTINGHAM

CLAVE: 10010

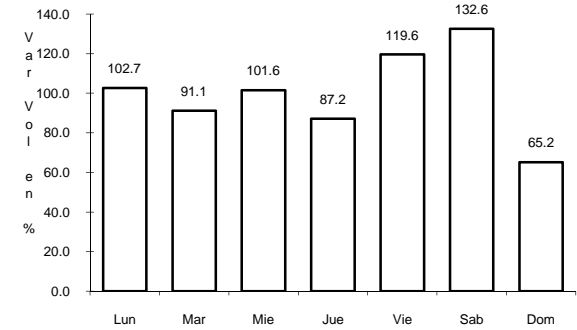
RUTA: DGO-325



Km: 0.00 Tipo: 3 Sent: 0



Km: 16.00 Tipo: 1 Sent: 0

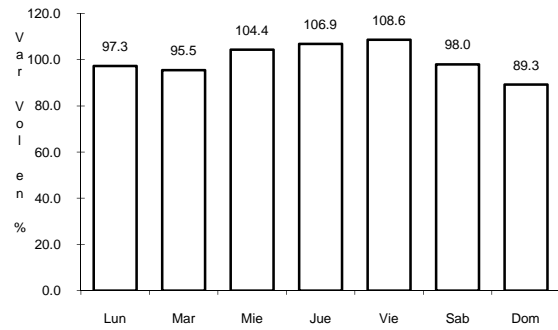


Km: 33.00 Tipo: 1 Sent: 0

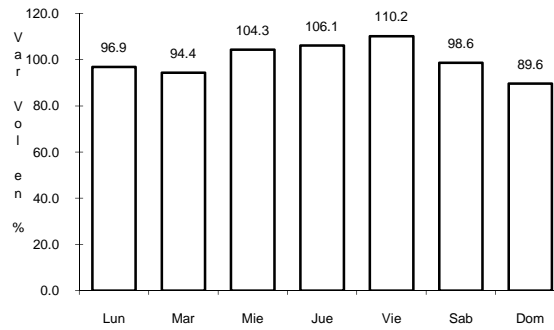
21 CARR: LIBRAMIENTO CUENCAME

CLAVE: 10006

RUTA: MEX



Km: 0.00 Tipo: 3 Sent: 0

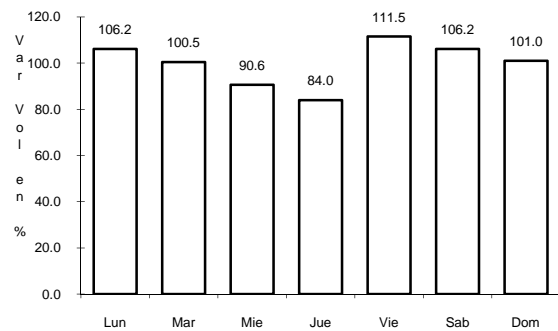


Km: 2.60 Tipo: 3 Sent: 0

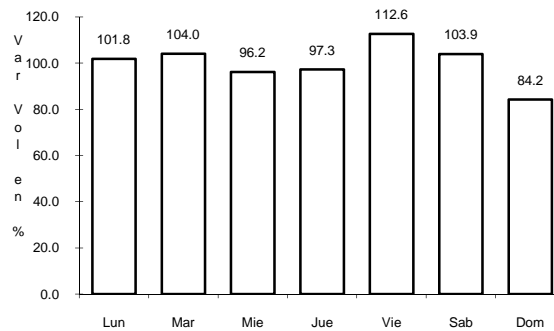
22 CARR: PEDRICEÑA - ENT. RODEO

CLAVE: 10002

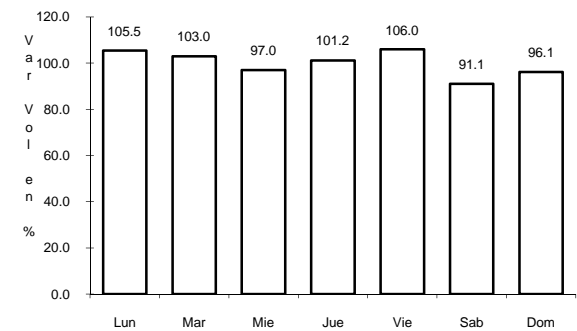
RUTA: MEX-032



Km: 0.00 Tipo: 3 Sent: 0



Km: 45.00 Tipo: 1 Sent: 0



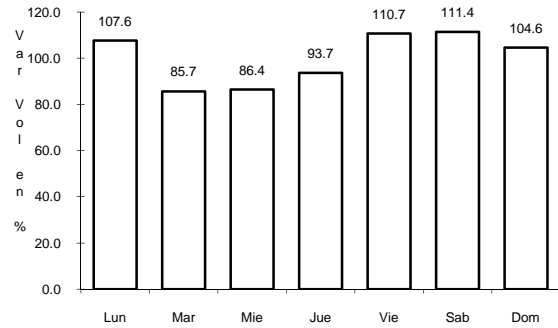
Km: 98.00 Tipo: 1 Sent: 0



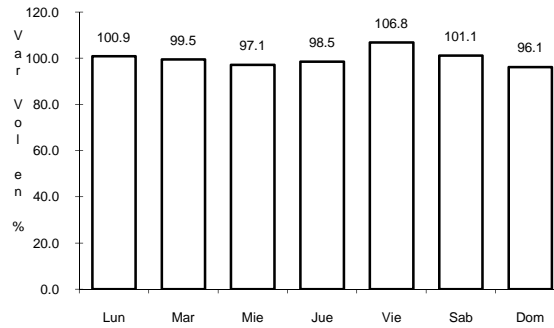
26 CARR: YERBANIS - PEÑON BLANCO

CLAVE: 10032

RUTA: DGO-316



Km: 0.00 Tipo: 3 Sent: 0

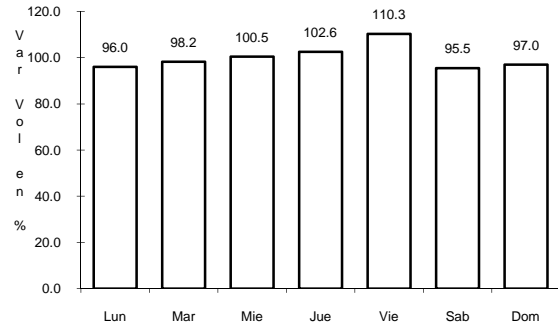


Km: 22.00 Tipo: 1 Sent: 0

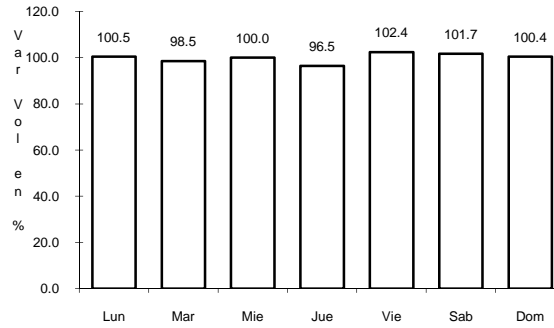
27 CARR: ENT. LA CHICHARRONA - CUENCA ME

CLAVE: 00152

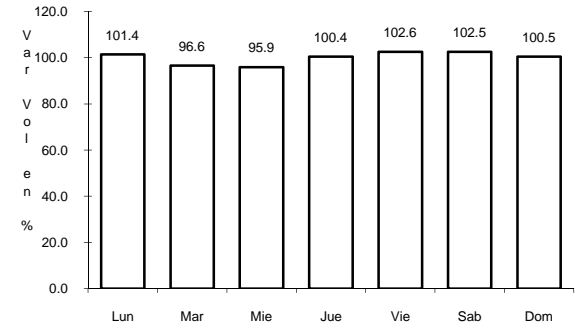
RUTA: MEX-049



Km: 0.00 Tipo: 3 Sent: 1



Km: 0.00 Tipo: 3 Sent: 2

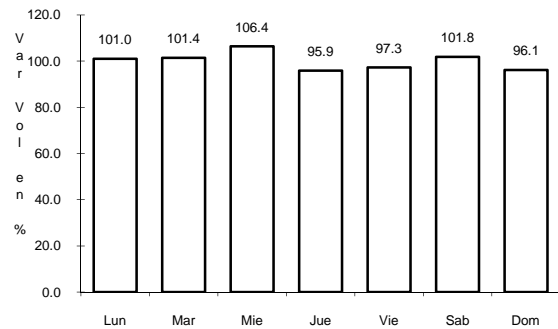


Km: 199.10 Tipo: 1 Sent: 0

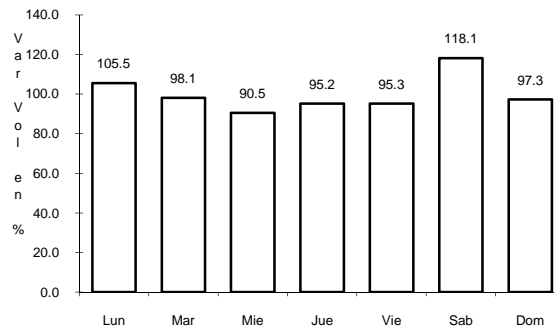
28 CARR: HIDALGO DEL PARRAL - GUADALUPE Y CALVO

CLAVE: 00802

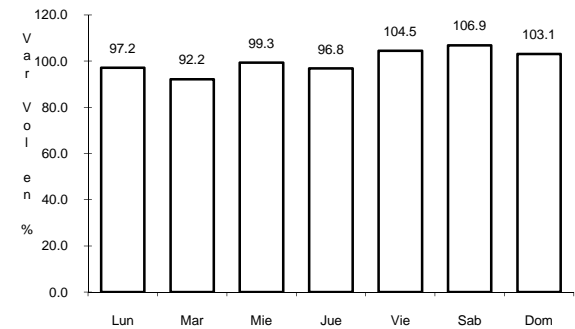
RUTA: MEX-024



Km: 0.00 Tipo: 3 Sent: 0

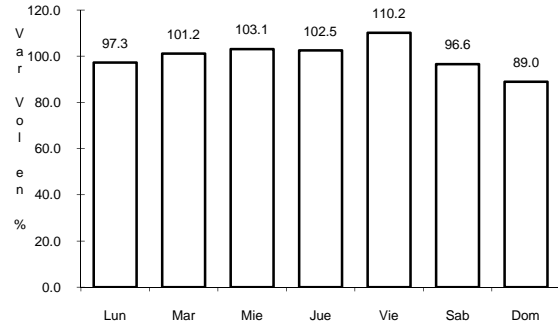


Km: 110.00 Tipo: 1 Sent: 0



Km: 212.00 Tipo: 1 Sent: 0

29 CARR: ZACATECAS - DURANGO

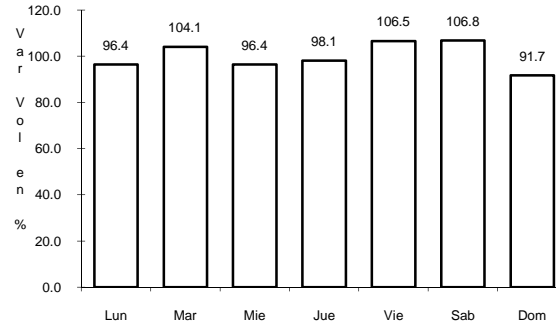


Km: 6.40

Tipo: 3

Sent: 1

CLAVE: 00544

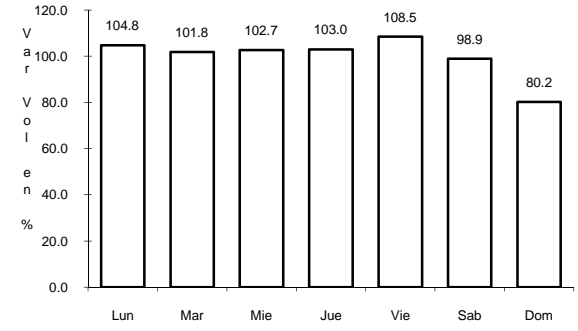


Km: 6.40

Tipo: 3

Sent: 2

RUTA: MEX-045



Km: 161.50

Tipo: 3

Sent: 0