

Secretaría de Comunicaciones y Transportes

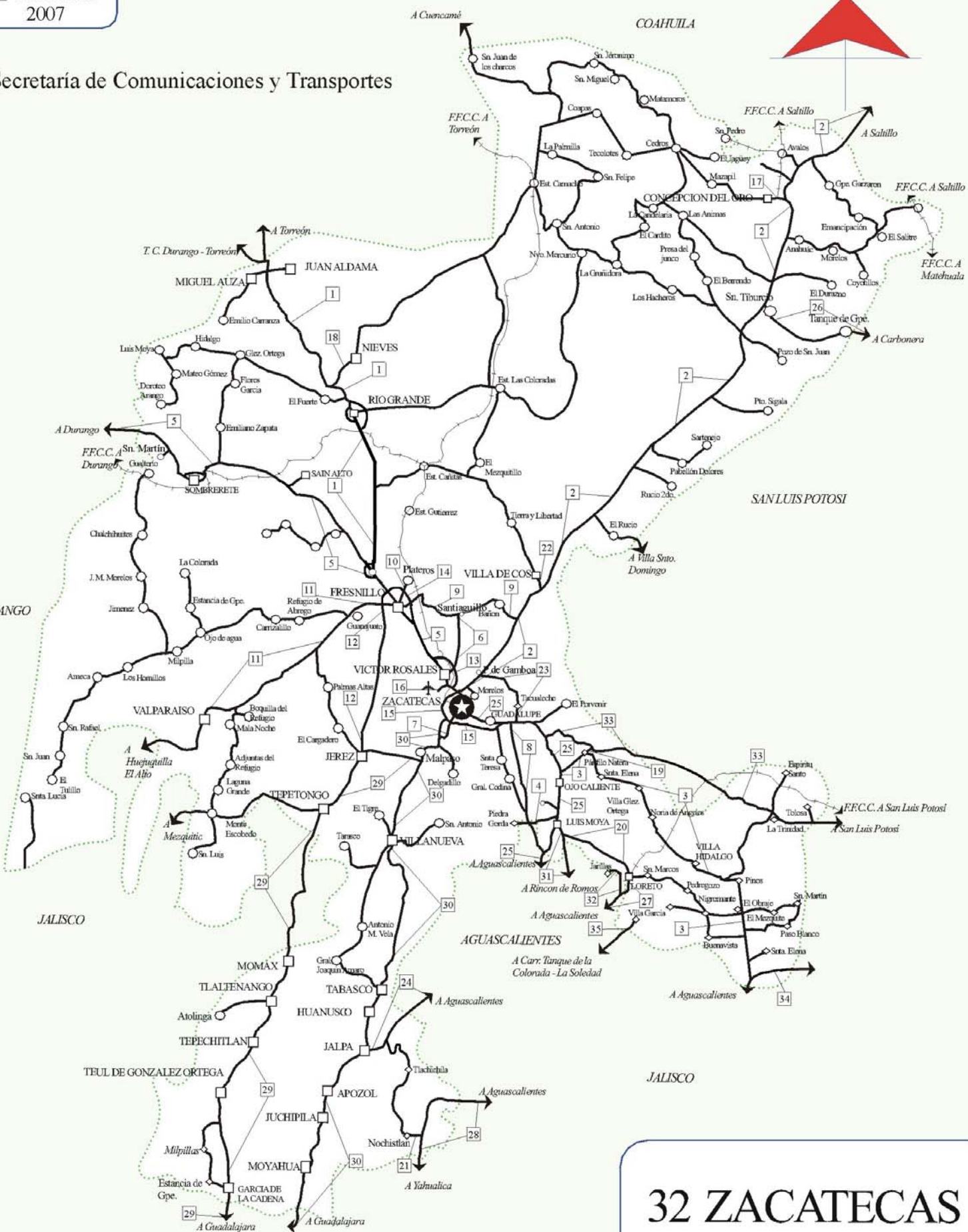
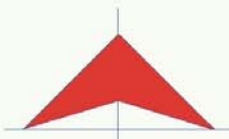
DURANGO

JALISCO

COAHUILA

SAN LUIS POTOSÍ

JALISCO



32 ZACATECAS

# CARRETERAS AFORADAS

Num.	CARRETERA
INDICE	
1	ENT. LA CHICHARRONA - CUENCAME
2	ENT. MORELOS - SALTILLO
3	ENT. OJO CALIENTE - ENT. OJUELOS DE JALISCO
4	RAMAL A SAN PEDRO PIEDRA GORDA
5	ZACATECAS - DURANGO
6	CALERA DE VICTOR ROSALES - SANTIAGUILLO
7	CIENEGUILLAS - ZACATECAS
8	ENT. CUAUHEMOC - ENT. OSIRIS (CUOTA)
9	FRESNILLO - ENT. BAÑON
10	FRESNILLO - PLATEROS
11	FRESNILLO - VALPARAISO
12	JEREZ - FRESNILLO
13	LIBRAMIENTO CALERA DE VICTOR ROSALES
14	LIBRAMIENTO DE FRESNILLO
15	LIBRAMIENTO DE GUADALUPE - ZACATECAS
16	RAMAL A AEROPUERTO ZACATECAS
17	RAMAL A CONCEPCION DEL ORO
18	RAMAL A FRANCISCO MURGUIA (NIEVES)
19	RAMAL A GRAL. PANFILO NATERA
20	RAMAL A LORETO
21	RAMAL A NOCHISTLAN
22	RAMAL A VILLA DE COS
23	SANTA MONICA - POZO DE GAMBOA
24	AGUASCALIENTES - JALPA
25	AGUASCALIENTES - ZACATECAS
26	CARBONERA - T. C. (ENT. MORELOS - SALTILLO)
27	ENT. RIVIER - SAN MARCOS
28	TEPATITLAN - JARALILLO
29	ENT. TESISTAN - ENT. MALPASO
30	GUADALAJARA - ZACATECAS
31	PROVIDENCIA - LUIS MOYA
32	SAN GIL - JARILLAS
33	SAN LUIS POTOSI - ENT. ARCINAS
34	SAN LUIS POTOSI - LAGOS DE MORENO
35	SAN RAFAEL - VILLA GARCIA

# CARRETERAS AFORADAS

Num.	CARRETERA
INDICE	
1	ENT. LA CHICHARRONA - CUENCAME
2	ENT. MORELOS - SALTILLO
3	ENT. OJO CALIENTE - ENT. OJUELOS DE JALISCO
4	RAMAL A SAN PEDRO PIEDRA GORDA
5	ZACATECAS - DURANGO
6	CALERA DE VICTOR ROSALES - SANTIAGUILLO
7	CIENEGUILLAS - ZACATECAS
8	ENT. CUAUHEMOC - ENT. OSIRIS (CUOTA)
9	FRESNILLO - ENT. BAÑON
10	FRESNILLO - PLATEROS
11	FRESNILLO - VALPARAISO
12	JEREZ - FRESNILLO
13	LIBRAMIENTO CALERA DE VICTOR ROSALES
14	LIBRAMIENTO DE FRESNILLO
15	LIBRAMIENTO DE GUADALUPE - ZACATECAS
16	RAMAL A AEROPUERTO ZACATECAS
17	RAMAL A CONCEPCION DEL ORO
18	RAMAL A FRANCISCO MURGUIA (NIEVES)
19	RAMAL A GRAL. PANFILO NATERA
20	RAMAL A LORETO
21	RAMAL A NOCHISTLAN
22	RAMAL A VILLA DE COS
23	SANTA MONICA - POZO DE GAMBOA
24	AGUASCALIENTES - JALPA
25	AGUASCALIENTES - ZACATECAS
26	CARBONERA - T. C. (ENT. MORELOS - SALTILLO)
27	ENT. RIVIER - SAN MARCOS
28	TEPATITLAN - JARALILLO
29	ENT. TESISTAN - ENT. MALPASO
30	GUADALAJARA - ZACATECAS
31	PROVIDENCIA - LUIS MOYA
32	SAN GIL - JARILLAS
33	SAN LUIS POTOSI - ENT. ARCINAS
34	SAN LUIS POTOSI - LAGOS DE MORENO
35	SAN RAFAEL - VILLA GARCIA

ZACATECAS

1 CARR : ENT. LA CHICHARRONA - CUENCAME

CLAVE: 00152

RUTA : MEX-049

AÑO : 2006

L U G A R	E S T A C I O N				C L A S I F I C A C I O N V E H I C U L A R E N P O R C I E N T O .												
	KM	TE	SC	TDPA	A	B	C2	C3	T3S2	T3S3	T3S2R4	OTROS	A	B	C	K'	D
ENT. LA CHICHARRONA	0.00	3	1	3229	72.6	7.7	6.6	5.6	4.2	1.6	1.2	0.5	72	8	20	0.059	0.511
ENT. LA CHICHARRONA	0.00	3	2	2967	73.6	6.1	4.7	5.5	4.7	3.1	1.5	0.8	74	6	20	0.071	0.511
T. DER. CAÑITAS DE FELIPE PESCADOR	25.86	1	1	2759	68.7	8.7	6.4	4.1	4.6	5.1	1.0	1.4	68	9	23	0.062	0.513
T. DER. CAÑITAS DE FELIPE PESCADOR	25.86	1	2	2902	67.9	7.4	7.1	5.8	4.9	5.1	1.0	0.8	68	7	25	0.063	0.513
RIO GRANDE	60.00	1	0	5490	75.5	5.3	6.3	3.5	3.7	3.1	1.6	1.0	76	5	19	0.081	
RIO GRANDE	60.00	3	0	6445	76.3	4.4	4.8	4.9	3.2	3.9	1.4	1.1	77	4	19	0.078	
T. DER. NIEVES	78.00	3	0	5971	73.6	4.7	6.5	4.6	3.4	4.5	2.0	0.7	73	5	22	0.062	
X. C. JUAN ALDAMA - MIGUEL AUZA	124.50	1	0	4891	67.4	8.5	6.6	4.6	5.7	4.7	1.2	1.3	67	9	24	0.065	
X. C. JUAN ALDAMA - MIGUEL AUZA	124.50	3	0	5232	69.9	8.1	6.2	4.3	4.9	4.2	1.5	0.9	70	8	22	0.066	
LIM. EDOS. TERM. ZAC. PPIA. DGO.	134.30	0	0														
T. DER. SANTA CLARA	144.00	1	0	5114	67.3	6.0	5.8	6.4	7.1	4.7	1.8	0.9	67	6	27	0.065	
T. DER. SANTA CLARA	144.00	3	0	4919	61.3	7.3	9.1	6.6	8.1	4.1	1.8	1.7	62	7	31	0.051	
CUENCAME	199.10	1	0	4769	69.1	6.0	6.0	3.9	7.7	4.9	1.5	0.9	69	6	25	0.074	

2 CARR : ENT. MORELOS - SALTILLO

CLAVE: 00149

RUTA : MEX-054

AÑO : 2006

L U G A R	E S T A C I O N				C L A S I F I C A C I O N V E H I C U L A R E N P O R C I E N T O .												
	KM	TE	SC	TDPA	A	B	C2	C3	T3S2	T3S3	T3S2R4	OTROS	A	B	C	K'	D
T. C. ZACATECAS - DURANGO	0.00	3	0	5590	74.2	5.0	6.8	3.4	2.9	3.9	2.1	1.7	74	5	21	0.063	
T. DER. STA. MONICA	11.00	1	0	4578	76.8	6.2	8.0	1.7	1.7	3.8	0.7	1.1	77	6	17	0.073	
T. DER. STA. MONICA	11.00	3	0	4396	76.9	4.5	6.9	2.9	2.3	3.9	1.6	1.0	76	5	19	0.067	
T. IZQ. VILLA DE COSS	53.90	1	0	4540	76.1	6.7	7.6	1.7	1.5	4.9	0.6	0.9	76	7	17	0.061	
T. IZQ. VILLA DE COSS	53.90	3	0	3822	78.6	3.6	5.4	1.7	2.7	5.2	1.8	1.0	78	4	18	0.060	
SIERRA VIEJA	85.50	3	0	3673	80.3	4.0	4.8	2.9	1.5	3.6	1.9	1.0	80	4	16	0.057	
T. DER. MAJOMA	144.50	3	0	3572	70.7	9.1	6.9	5.2	3.1	2.6	1.5	0.9	71	9	20	0.051	
T. DER. SAN TIBURCIO	185.30	1	0	3352	71.6	8.1	4.7	3.7	3.1	5.6	2.1	1.1	72	8	20	0.061	
T. DER. SAN TIBURCIO	185.30	3	0	3289	75.6	5.5	6.5	3.9	2.8	3.7	1.4	0.6	75	6	19	0.057	
T. IZQ. CONCEPCION DEL ORO	240.00	1	0	3984	74.1	6.1	7.1	3.4	2.5	5.7	0.4	0.7	74	6	20	0.056	
T. IZQ. CONCEPCION DEL ORO	240.00	3	0	2687	73.9	6.6	5.3	3.9	3.6	5.5	1.1	0.1	73	7	20	0.067	
LIM. EDOS. TERM. ZAC. PPIA. COAH.	266.50	0	0														
AGUA NUEVA	322.00	1	0	3786	79.2	3.7	4.7	2.7	2.7	5.3	0.6	1.1	79	4	17	0.069	
T. DER. DERRAMADERO	333.00	3	0	7468	81.4	5.6	4.8	1.7	1.7	2.2	1.5	1.1	81	6	13	0.072	
X. C. LIBRAMIENTO DE SALTILLO	348.00	1	1	11211	85.3	3.9	4.1	2.4	1.6	1.2	0.8	0.7	85	4	11	0.074	0.526
X. C. LIBRAMIENTO DE SALTILLO	348.00	1	2	10529	78.4	4.4	5.2	3.6	2.7	2.1	1.5	2.1	79	4	17	0.070	0.526
SALTILLO	354.00	1	1	8834	84.3	3.2	5.2	1.6	1.8	1.6	0.8	1.5	84	3	13	0.078	0.521

ZACATECAS

2 CARR : ENT. MORELOS - SALTILLO

CLAVE: 00149

RUTA : MEX-054

AÑO : 2006

L U G A R	E S T A C I O N				C L A S I F I C A C I O N V E H I C U L A R E N P O R C I E N T O .												
	KM	TE	SC	TDPA	A	B	C2	C3	T3S2	T3S3	T3S2R4	OTROS	A	B	C	K'	D
SALTILLO	354.00	1	2	9418	78.8	3.7	4.6	2.7	3.0	1.6	1.5	4.1	78	4	18	0.071	0.521

3 CARR : ENT. OJO CALIENTE - ENT. OJUELOS DE JALISCO

CLAVE: 00126

RUTA : ZAC

AÑO : 2006

L U G A R	E S T A C I O N				C L A S I F I C A C I O N V E H I C U L A R E N P O R C I E N T O .												
	KM	TE	SC	TDPA	A	B	C2	C3	T3S2	T3S3	T3S2R4	OTROS	A	B	C	K'	D
T. C. AGUASCALIENTES - ZACATECAS	0.00	3	0	2357	80.6	4.2	7.7	4.1	0.7	0.9	1.8	0.0	81	4	15	0.106	
GRAL. PANFILO NATERA	16.00	3	0	1909	86.8	2.6	6.4	1.6	0.5	0.5	1.6	0.0	86	3	11	0.079	
LIM. EDOS. TERM. ZAC. PPIA. JAL.	124.30	0	0														
T. C. SAN LUIS POTOSI - LAGOS DE MORENO	127.30	0	0														

4 CARR : RAMAL A SAN PEDRO PIEDRA GORDA

CLAVE: 00553

RUTA : ZAC-AGS

AÑO : 2006

L U G A R	E S T A C I O N				C L A S I F I C A C I O N V E H I C U L A R E N P O R C I E N T O .												
	KM	TE	SC	TDPA	A	B	C2	C3	T3S2	T3S3	T3S2R4	OTROS	A	B	C	K'	D
T. C. AGUASCALIENTES - ZACATECAS	0.00	3	0	1231	88.2	2.3	4.1	1.4	1.9	1.3	0.7	0.1	88	2	10	0.100	
LIM. EDOS. TERM. ZAC. PPIA. AGS.	5.00	0	0														
LIM. EDOS. TERM. AGS. PPIA. ZAC.	8.00	0	0														
SAN PEDRO PIEDRA GORDA	9.00	1	0	1587	85.9	0.5	8.6	3.0	1.2	0.5	0.1	0.2	85	1	14	0.091	

5 CARR : ZACATECAS - DURANGO

CLAVE: 00544

RUTA : MEX-045

AÑO : 2006

L U G A R	E S T A C I O N				C L A S I F I C A C I O N V E H I C U L A R E N P O R C I E N T O .												
	KM	TE	SC	TDPA	A	B	C2	C3	T3S2	T3S3	T3S2R4	OTROS	A	B	C	K'	D
ZACATECAS	0.00	0	0														
T. IZQ. GUADALAJARA	6.40	3	1	9714	75.6	4.6	8.5	3.5	3.3	1.8	1.1	1.6	75	5	20	0.066	0.509
T. IZQ. GUADALAJARA	6.40	3	2	10054	74.1	6.6	7.6	3.9	3.9	2.0	0.6	1.3	74	7	19	0.070	0.509
T. DER. SALTILLO (T. MORELOS)	15.00	3	1	9134	74.4	5.3	5.4	5.8	4.1	2.6	1.7	0.7	75	5	20	0.071	0.511
T. DER. SALTILLO (T. MORELOS)	15.00	3	2	8735	74.9	7.4	7.3	3.3	2.9	2.2	1.3	0.7	75	7	18	0.079	0.511
VICTOR ROSALES	28.00	1	1	7597	76.1	11.0	3.5	3.8	2.4	2.0	0.4	0.8	76	11	13	0.061	0.504
VICTOR ROSALES	28.00	1	2	8107	73.3	10.8	5.3	2.7	4.0	2.7	0.2	1.0	73	11	16	0.060	0.504
GRAL. ENRIQUE ESTRADA	34.60	3	1	4445	76.8	7.9	6.2	2.8	2.7	2.0	1.0	0.6	77	8	15	0.075	0.522
GRAL. ENRIQUE ESTRADA	34.60	3	2	4375	75.4	7.7	6.3	3.2	2.8	2.1	1.8	0.7	75	8	17	0.083	0.522
FRESNILLO	58.50	1	1	5263	74.5	7.4	4.9	4.8	3.4	2.5	1.7	0.8	75	7	18	0.072	0.509
FRESNILLO	58.50	1	2	5105	78.8	5.1	7.0	2.8	3.0	1.7	0.9	0.7	79	5	16	0.071	0.509





ZACATECAS

11 CARR : FRESNILLO - VALPARAISO

CLAVE: 32547

RUTA : MEX-044

AÑO : 2006

L U G A R	E S T A C I O N				C L A S I F I C A C I O N V E H I C U L A R E N P O R C I E N T O .												
	KM	TE	SC	TDPA	A	B	C2	C3	T3S2	T3S3	T3S2R4	OTROS	A	B	C	K'	D
FRESNILLO	0.00	3	0	5322	88.1	2.1	5.3	0.8	0.2	0.6	2.0	0.9	88	2	10	0.079	
T. IZQ. GUANAJUATO	24.50	1	0	1740	89.8	2.7	4.9	0.7	0.3	0.6	0.7	0.3	89	3	8	0.080	
T. IZQ. SOMBRERETILLO	45.00	3	0	963	86.3	2.3	5.6	2.5	1.1	0.9	1.0	0.3	87	2	11	0.100	
T. IZQ. SAN JOSE DE LLANETES	55.00	3	0	1130	86.2	2.6	5.7	1.9	1.1	1.4	0.7	0.4	86	3	11	0.096	
T. IZQ. LOBATOS	71.00	3	0	1223	86.9	2.4	5.4	2.1	0.8	1.0	1.4	0.0	87	2	11	0.095	
VALPARAISO	90.00	1	0	2095	86.3	1.8	6.3	2.9	0.5	0.7	1.5	0.0	86	2	12	0.099	

12 CARR : JEREZ - FRESNILLO

CLAVE: 32542

RUTA : MEX.

AÑO : 2006

L U G A R	E S T A C I O N				C L A S I F I C A C I O N V E H I C U L A R E N P O R C I E N T O .												
	KM	TE	SC	TDPA	A	B	C2	C3	T3S2	T3S3	T3S2R4	OTROS	A	B	C	K'	D
JEREZ	0.00	3	0	3273	84.4	4.8	3.7	2.4	1.5	1.3	1.5	0.4	84	5	11	0.103	
T.C. ENT. FRESNILLO - VALPARAISO	60.00	1	0	2674	83.2	4.5	5.0	3.0	1.6	1.6	0.7	0.4	83	5	12	0.078	

13 CARR : LIBRAMIENTO CALERA DE VICTOR ROSALES

CLAVE: 32015

RUTA : MEX-045

AÑO : 2006

L U G A R	E S T A C I O N				C L A S I F I C A C I O N V E H I C U L A R E N P O R C I E N T O .												
	KM	TE	SC	TDPA	A	B	C2	C3	T3S2	T3S3	T3S2R4	OTROS	A	B	C	K'	D
T. C. ZACATECAS - DURANGO	0.00		0														
CASETA DE COBRO CALERA DE VICTOR ROSALES	0.50	2	0	7091													
T. C. ZACATECAS - DURANGO	5.90		0														

14 CARR : LIBRAMIENTO DE FRESNILLO

CLAVE: 32581

RUTA : MEX-045

AÑO : 2006

L U G A R	E S T A C I O N				C L A S I F I C A C I O N V E H I C U L A R E N P O R C I E N T O .												
	KM	TE	SC	TDPA	A	B	C2	C3	T3S2	T3S3	T3S2R4	OTROS	A	B	C	K'	D
T. C. ZACATECAS - DURANGO	0.00		0														
CASETA DE COBRO MORFIN CHAVEZ	8.00	2	0	3351													
T. C. ZACATECAS - DURANGO	20.05		0														

15 CARR : LIBRAMIENTO DE GUADALUPE - ZACATECAS

CLAVE: 32582

RUTA : MEX

AÑO : 2006

L U G A R	E S T A C I O N				C L A S I F I C A C I O N V E H I C U L A R E N P O R C I E N T O .												
	KM	TE	SC	TDPA	A	B	C2	C3	T3S2	T3S3	T3S2R4	OTROS	A	B	C	K'	D
T. C. AGUASCALIENTES - ZACATECAS	0.00	3	0	12632	81.6	4.8	5.5	1.7	1.8	1.8	1.3	1.5	81	5	14	0.067	



ZACATECAS

15 CARR : LIBRAMIENTO DE GUADALUPE - ZACATECAS

CLAVE: 32582

RUTA : MEX

AÑO : 2006

L U G A R	E S T A C I O N				C L A S I F I C A C I O N V E H I C U L A R E N P O R C I E N T O .												
	KM	TE	SC	TDPA	A	B	C2	C3	T3S2	T3S3	T3S2R4	OTROS	A	B	C	K'	D
X.C. CIENEGUILLAS - ZACATECAS	13.00	3	0	9671	80.1	4.3	6.4	3.6	2.2	1.4	0.7	1.3	80	4	16	0.073	
T. C. ZACATECAS - DURANGO	17.50	1	0	9956	80.2	4.6	6.3	2.7	1.8	1.3	1.2	1.9	80	5	15	0.075	

16 CARR : RAMAL A AEROPUERTO ZACATECAS

CLAVE: 32546

RUTA : MEX

AÑO : 2006

L U G A R	E S T A C I O N				C L A S I F I C A C I O N V E H I C U L A R E N P O R C I E N T O .												
	KM	TE	SC	TDPA	A	B	C2	C3	T3S2	T3S3	T3S2R4	OTROS	A	B	C	K'	D
T. C. ZACATECAS - DURANGO	0.00	3	0	2032	90.5	1.3	5.6	1.8	0.4	0.2	0.1	0.1	91	1	8	0.128	
AEROPUERTO	1.95	0	0														

17 CARR : RAMAL A CONCEPCION DEL ORO

CLAVE: 32565

RUTA : MEX

AÑO : 2006

L U G A R	E S T A C I O N				C L A S I F I C A C I O N V E H I C U L A R E N P O R C I E N T O .												
	KM	TE	SC	TDPA	A	B	C2	C3	T3S2	T3S3	T3S2R4	OTROS	A	B	C	K'	D
T. C. ENT. MORELOS - SALTILLO	0.00	3	0	3168	86.0	3.1	5.9	3.1	0.4	0.1	1.3	0.1	86	3	11	0.078	
CONCEPCION DEL ORO	3.20	0	0														

18 CARR : RAMAL A FRANCISCO MURGUIA (NIEVES)

CLAVE: 32541

RUTA : MEX-114

AÑO : 2006

L U G A R	E S T A C I O N				C L A S I F I C A C I O N V E H I C U L A R E N P O R C I E N T O .												
	KM	TE	SC	TDPA	A	B	C2	C3	T3S2	T3S3	T3S2R4	OTROS	A	B	C	K'	D
T. C. ENT. LA CHICHARRONA - CUENCAME	0.00	3	0	1368	79.1	7.3	7.3	1.9	2.0	0.4	1.4	0.6	79	7	14	0.091	
FRANCISCO MURGUIA (NIEVES)	17.40	0	0														

19 CARR : RAMAL A GRAL. PANFILO NATERA

CLAVE: 32559

RUTA : MEX

AÑO : 2006

L U G A R	E S T A C I O N				C L A S I F I C A C I O N V E H I C U L A R E N P O R C I E N T O .												
	KM	TE	SC	TDPA	A	B	C2	C3	T3S2	T3S3	T3S2R4	OTROS	A	B	C	K'	D
T. C. SAN LUIS POTOSI - ENT. ARCINAS	0.00	3	0	2194	90.8	1.6	4.2	1.2	0.3	0.5	1.3	0.1	90	2	8	0.099	
GRAL. PANFILO NATERA	1.50	0	0														

20 CARR : RAMAL A LORETO

CLAVE: 32067

RUTA : ZAC

AÑO : 2006

L U G A R	E S T A C I O N				C L A S I F I C A C I O N V E H I C U L A R E N P O R C I E N T O .												
	KM	TE	SC	TDPA	A	B	C2	C3	T3S2	T3S3	T3S2R4	OTROS	A	B	C	K'	D
T. C. PROVIDENCIA - LUIS MOYA	0.00	3	0	1362	87.8	2.3	5.6	3.3	0.5	0.2	0.2	0.1	88	2	10	0.093	

ZACATECAS

20 CARR : RAMAL A LORETO

CLAVE: 32067

RUTA : ZAC

AÑO : 2006

L U G A R	E S T A C I O N				C L A S I F I C A C I O N V E H I C U L A R E N P O R C I E N T O .												
	KM	TE	SC	TDPA	A	B	C2	C3	T3S2	T3S3	T3S2R4	OTROS	A	B	C	K'	D
LORETO	32.30	0	0														

21 CARR : RAMAL A NOCHISTLAN

CLAVE: 32545

RUTA : ZAC

AÑO : 2006

L U G A R	E S T A C I O N				C L A S I F I C A C I O N V E H I C U L A R E N P O R C I E N T O .												
	KM	TE	SC	TDPA	A	B	C2	C3	T3S2	T3S3	T3S2R4	OTROS	A	B	C	K'	D
T. C. TEPATITLAN DE MORELOS - JARALILLO	0.00	3	0	3978	88.4	2.4	4.2	2.4	0.9	0.4	1.1	0.2	89	2	9	0.088	
NOCHISTLAN	5.70	1	0	3615	87.0	2.9	4.7	2.1	1.1	0.4	1.2	0.6	87	3	10	0.098	

22 CARR : RAMAL A VILLA DE COS

CLAVE: 32564

RUTA : MEX

AÑO : 2006

L U G A R	E S T A C I O N				C L A S I F I C A C I O N V E H I C U L A R E N P O R C I E N T O .												
	KM	TE	SC	TDPA	A	B	C2	C3	T3S2	T3S3	T3S2R4	OTROS	A	B	C	K'	D
T. C. ENT. MORELOS - SALTILLO	0.00	3	0	3056	86.4	2.5	5.2	1.5	1.1	1.6	1.5	0.2	86	3	11	0.088	
VILLA DE COS	3.30	1	0	2959	88.3	1.6	4.5	2.6	0.6	1.0	1.2	0.2	88	2	10	0.098	

23 CARR : SANTA MONICA - POZO DE GAMBOA

CLAVE: 32568

RUTA : ZAC

AÑO : 2006

L U G A R	E S T A C I O N				C L A S I F I C A C I O N V E H I C U L A R E N P O R C I E N T O .												
	KM	TE	SC	TDPA	A	B	C2	C3	T3S2	T3S3	T3S2R4	OTROS	A	B	C	K'	D
T. C. AGUASCALIENTES - ZACATECAS	0.00	3	0	3989	82.5	3.2	8.3	2.3	1.9	0.8	0.8	0.2	83	3	14	0.116	
TACOALECHE	7.60	3	0	4303	83.8	4.4	6.2	1.4	1.6	1.1	1.3	0.2	84	4	12	0.078	
POZO DE GAMBOA	34.50	0	0														

24 CARR : AGUASCALIENTES - JALPA

CLAVE: 00095

RUTA : MEX-070

AÑO : 2006

L U G A R	E S T A C I O N				C L A S I F I C A C I O N V E H I C U L A R E N P O R C I E N T O .												
	KM	TE	SC	TDPA	A	B	C2	C3	T3S2	T3S3	T3S2R4	OTROS	A	B	C	K'	D
AGUASCALIENTES	0.00	3	1	8258	83.9	3.5	5.2	2.7	0.7	1.1	1.7	1.2	83	4	13	0.082	0.509
AGUASCALIENTES	0.00	3	2	9278	84.6	3.3	4.9	2.8	0.7	1.5	1.2	1.0	85	3	12	0.075	0.509
T. IZQ. VILLA HIDALGO	7.80	3	0	6212	86.7	3.4	4.2	2.5	0.8	1.1	0.5	0.8	87	3	10	0.089	
T. DER. GRACIAS A DIOS	20.00	3	0	4402	87.2	3.1	4.0	1.5	1.4	1.1	1.2	0.5	87	3	10	0.089	
T. IZQ. MALPASO	45.10	1	0	3985	86.5	2.8	4.9	2.1	1.2	1.9	0.1	0.5	86	3	11	0.088	
T. DER. PRESA LA CODORNIZ	49.30	3	1	5297	86.0	2.7	5.1	2.5	0.7	0.6	1.0	1.4	86	3	11	0.085	0.514
T. DER. PRESA LA CODORNIZ	49.30	3	2	5793	85.0	2.3	5.3	2.7	1.2	0.9	2.0	0.6	85	2	13	0.084	0.514



ZACATECAS

26 CARR : CARBONERA - T. C. (ENT. MORELOS - SALTILLO)

CLAVE: 00218

RUTA : MEX-062

AÑO : 2006

L U G A R	E S T A C I O N				C L A S I F I C A C I O N V E H I C U L A R E N P O R C I E N T O .												
	KM	TE	SC	TDPA	A	B	C2	C3	T3S2	T3S3	T3S2R4	OTROS	A	B	C	K'	D
CARBONERA	0.00	3	0	2181	82.8	4.5	5.1	4.0	1.2	1.4	0.0	1.0	82	5	13	0.085	0.512
CEDRAL	18.00	1	0	1972	90.5	1.5	4.1	1.3	0.4	0.7	0.1	1.4	90	2	8	0.086	0.502
CEDRAL	18.00	3	0	1718	84.0	6.2	3.8	3.5	0.5	0.8	0.0	1.2	84	6	10	0.084	0.514
LIM. EDOS. TERM. S.L.P. PPIA. ZAC.	79.20	0	0														
T. C. ENT. MORELOS - SALTILLO	112.00	1	0	1011	86.4	3.3	4.4	3.8	0.9	0.3	0.8	0.1	87	3	10	0.076	

27 CARR : ENT. RIVIER - SAN MARCOS

CLAVE: 00285

RUTA : MEX-066

AÑO : 2006

L U G A R	E S T A C I O N				C L A S I F I C A C I O N V E H I C U L A R E N P O R C I E N T O .												
	KM	TE	SC	TDPA	A	B	C2	C3	T3S2	T3S3	T3S2R4	OTROS	A	B	C	K'	D
T. C. AGUASCALIENTES - ZACATECAS	0.00	3	0	14442	87.4	2.7	3.9	3.4	0.9	0.8	0.8	0.1	87	3	10	0.061	
T. IZQ. EL TEPETATE	10.50	3	0	7020	80.5	6.3	5.2	3.7	1.7	1.3	1.1	0.2	81	6	13	0.079	
T. DER. JILOTEPEC	23.60	3	0	5528	85.0	3.3	5.1	2.9	1.3	0.5	1.4	0.5	85	3	12	0.086	
VILLA JUAREZ	30.00	3	0	6256	80.9	5.2	7.8	2.7	0.9	0.8	0.8	0.9	81	5	14	0.082	
CIENEGA GRANDE	41.50	1	0	5841	87.5	2.5	4.1	2.6	0.6	0.7	1.5	0.5	87	3	10	0.085	
CIENEGA GRANDE	41.50	3	0	4356	85.5	3.5	4.1	2.7	0.8	1.3	1.6	0.5	85	4	11	0.098	
LIM. EDOS. TERM. AGS. PPIA. ZAC.	45.75	0	0														
SAN MARCOS	56.00	1	0	5486	87.5	1.5	4.7	3.0	1.0	1.0	0.4	0.9	87	2	11	0.095	

28 CARR : TEPATITLAN - JARALILLO

CLAVE: 00146

RUTA : MEX-JAL-ZAC

AÑO : 2006

L U G A R	E S T A C I O N				C L A S I F I C A C I O N V E H I C U L A R E N P O R C I E N T O .												
	KM	TE	SC	TDPA	A	B	C2	C3	T3S2	T3S3	T3S2R4	OTROS	A	B	C	K'	D
T. C. LAGOS DE MORENO - GUADALAJARA	0.00	3	0	3993	78.3	7.9	8.0	3.3	0.8	0.5	0.8	0.4	78	8	14	0.083	
T. IZQ. MEZCALA	22.40	3	0	1128	85.5	4.1	3.4	2.1	1.4	1.7	1.7	0.1	86	4	10	0.109	
YAHUALICA DE GONZALEZ GALLO	57.40	3	0	2966	77.1	7.3	4.5	6.0	1.4	1.2	2.1	0.4	77	7	16	0.111	
T. DER. MEXTICACAN	72.45	3	0	1464	82.0	5.8	6.0	3.4	0.7	0.8	0.8	0.5	82	6	12	0.094	
LIM. EDOS. TERM. JAL. PPIA. ZAC.	83.50	0	0														
LIM. EDOS. TERM. ZAC. PPIA. JAL.	106.00	0	0														
TEOCALTICHE	111.00	1	0	2668	84.8	3.6	4.5	2.6	1.6	1.2	1.4	0.3	84	4	12	0.096	
TEOCALTICHE	111.00	3	0	2680	80.0	3.5	5.8	4.9	1.9	1.4	2.1	0.4	79	4	17	0.090	
T. C. LEON - AGUASCALIENTES	157.00	1	0	2223	81.7	3.8	4.9	4.5	1.8	1.4	1.6	0.3	81	4	15	0.076	

ZACATECAS

29 CARR : ENT. TESISTAN - ENT. MALPASO

CLAVE: 00584

RUTA : MEX-023

AÑO : 2006

L U G A R	E S T A C I O N				C L A S I F I C A C I O N V E H I C U L A R E N P O R C I E N T O .												
	KM	TE	SC	TDPA	A	B	C2	C3	T3S2	T3S3	T3S2R4	OTROS	A	B	C	K'	D
T. C. GUADALAJARA - TESISTAN	0.00	3	0	3614	79.4	8.0	4.7	1.9	1.7	2.1	1.3	0.9	79	8	13	0.142	
LIM. EDOS. TERM. JAL. PPIA. ZAC.	38.00	0	0														
GARCIA DE LA CADENA	54.00	1	0	1318	80.3	5.2	7.6	4.0	1.0	0.9	0.9	0.1	80	5	15	0.105	
TLALTENANGO DE SANCHEZ ROMAN	147.50	3	0	2655	82.8	6.4	5.8	1.7	1.2	0.6	1.4	0.1	83	6	11	0.147	
MOMAX	165.00	3	0	2623	85.1	3.4	5.2	1.8	1.7	1.0	1.3	0.5	85	3	12	0.082	
LIM. EDOS. TERM. ZAC. PPIA. JAL.	168.00	0	0														
COLOTLAN	175.00	1	0	2165	83.4	4.6	5.1	2.2	1.4	1.7	1.1	0.5	83	5	12	0.093	
LIM. EDOS. TERM. JAL. PPIA. ZAC.	212.80	0	0														
LIM. EDOS. TERM. ZAC. PPIA. JAL.	215.50	0	0														
LIM. EDOS. TERM. JAL. PPIA. ZAC.	226.60	0	0														
TEPETONGO	235.00	3	0	3182	78.0	4.9	7.5	3.4	2.7	1.0	1.1	1.4	78	5	17	0.073	
JEREZ DE GARCIA SALINAS	249.00	1	0	4736	76.2	10.0	3.4	2.7	3.0	3.6	0.7	0.4	76	10	14	0.087	
T. C. GUADALAJARA - ZACATECAS	275.00	1	0	4983	76.6	8.6	5.8	3.7	1.9	1.8	0.9	0.7	76	9	15	0.085	

30 CARR : GUADALAJARA - ZACATECAS

CLAVE: 00150

RUTA : MEX-054

AÑO : 2006

L U G A R	E S T A C I O N				C L A S I F I C A C I O N V E H I C U L A R E N P O R C I E N T O .												
	KM	TE	SC	TDPA	A	B	C2	C3	T3S2	T3S3	T3S2R4	OTROS	A	B	C	K'	D
GUADALAJARA	0.00	0	0														
X. PERIFERICO GUADALAJARA	6.19	3	0	14111	74.5	10.1	7.9	3.6	1.6	0.7	0.5	1.1	75	10	15	0.067	
T. DER. IXTLAHUACAN DEL RIO	49.46	3	0	3431	71.0	10.7	4.7	3.4	4.8	3.6	1.5	0.3	71	11	18	0.090	
LIM. EDOS. TERM. JAL. PPIA. ZAC.	76.49	0	0														
T. IZQ. MOYAHUA	106.40	1	0	3111	74.8	7.6	4.9	3.8	4.5	3.1	0.8	0.5	74	8	18	0.083	
APOZOL	129.30	1	0	4369	77.5	3.5	5.4	5.0	2.8	4.0	1.2	0.6	77	4	19	0.079	
JALPA	159.40	1	0	3332	79.5	5.1	4.8	3.5	3.7	1.7	1.2	0.5	80	5	15	0.093	
TABASCO	189.40	1	0	2877	78.8	4.9	5.1	2.7	3.5	3.0	1.3	0.7	79	5	16	0.094	
TABASCO	189.40	3	0	3261	79.3	5.2	4.9	2.3	4.1	2.6	1.2	0.4	79	5	16	0.069	
VILLANUEVA	255.70	3	0	3873	77.9	4.7	4.1	2.9	3.3	4.8	1.8	0.5	78	5	17	0.086	
T. IZQ. JEREZ DE GARCIA SALINAS	289.10	1	0	4814	74.8	5.1	5.1	3.0	5.5	4.5	1.5	0.5	75	5	20	0.073	
T. IZQ. JEREZ DE GARCIA SALINAS	289.10	3	0	5189	76.7	4.4	4.9	3.4	5.9	2.4	1.4	0.9	77	4	19	0.094	
T. C. ZACATECAS - DURANGO	311.80	1	0	8292	74.8	7.5	9.3	2.7	1.9	1.6	1.2	1.0	74	8	18	0.072	

ZACATECAS

31 CARR : PROVIDENCIA - LUIS MOYA

CLAVE: 00112

RUTA : MEX-071

AÑO : 2006

L U G A R	E S T A C I O N				C L A S I F I C A C I O N V E H I C U L A R E N P O R C I E N T O .												
	KM	TE	SC	TDPA	A	B	C2	C3	T3S2	T3S3	T3S2R4	OTROS	A	B	C	K'	D
T. C. AGUASCALIENTES - ZACATECAS	0.00	3	0	8534	78.0	8.7	7.7	2.2	1.4	1.0	0.6	0.4	78	9	13	0.069	
T. IZQ. PABELLON DE ARTEAGA	12.10	1	0	3202	76.6	8.3	8.1	2.3	1.8	2.0	0.4	0.5	77	8	15	0.083	
T. DER. VILLA JUAREZ	14.90	3	0	4890	81.4	4.1	6.2	3.4	1.8	1.6	0.8	0.7	81	4	15	0.084	
X. C. RINCON DE ROMOS - CIENEGA GRANDE	21.22	3	0	3546	78.2	5.9	6.2	3.9	2.7	1.9	0.7	0.5	78	6	16	0.082	
X. C. LA PUNTA - MESILLAS	30.35	3	0	3549	86.1	2.3	3.8	2.0	2.3	1.2	1.6	0.7	86	2	12	0.076	
SAN JACINTO	34.25	3	0	3952	85.4	2.4	4.9	2.4	2.1	1.4	0.7	0.7	86	2	12	0.073	
LIM. EDOS. TERM. AGS. PPIA. ZAC.	37.48	0	0														
LUIS MOYA	43.50	1	0	3566	82.6	2.6	5.4	2.7	2.6	2.1	1.6	0.4	82	3	15	0.088	

32 CARR : SAN GIL - JARILLAS

CLAVE: 00527

RUTA : AGS-012

AÑO : 2006

L U G A R	E S T A C I O N				C L A S I F I C A C I O N V E H I C U L A R E N P O R C I E N T O .												
	KM	TE	SC	TDPA	A	B	C2	C3	T3S2	T3S3	T3S2R4	OTROS	A	B	C	K'	D
T. C. RINCON DE ROMOS - CIENEGA GRANDE	0.00	3	0	1392	80.4	4.2	11.7	1.8	0.6	0.2	0.9	0.2	81	4	15	0.101	
GUADALUPE DE ATLAS	5.40	1	0	1192	74.8	5.3	18.5	0.5	0.0	0.1	0.6	0.2	75	5	20	0.109	
LIM. EDOS. TERM. AGS. PPIA. ZAC.	10.00	0	0														
LIM. EDOS. TERM. ZAC. PPIA. AGS.	11.30	0	0														
JARILLAS	12.00	0	0														

33 CARR : SAN LUIS POTOSI - ENT. ARCINAS

CLAVE: 00134

RUTA : MEX-149

AÑO : 2006

L U G A R	E S T A C I O N				C L A S I F I C A C I O N V E H I C U L A R E N P O R C I E N T O .												
	KM	TE	SC	TDPA	A	B	C2	C3	T3S2	T3S3	T3S2R4	OTROS	A	B	C	K'	D
T. C. SAN LUIS POTOSI - MATEHUALA	0.00	0	0														
LIM. EDOS. TERM. S.L.P. PPIA. ZAC.	55.13	0	0														
LIM. EDOS. TERM. ZAC. PPIA. S.L.P.	89.30	0	0														
LIM. EDOS. TERM. S.L.P. PPIA. ZAC.	122.50	0	0														
T. IZQ. PANFILO NATERA	139.00	1	0	4850	72.7	6.8	5.9	3.3	3.8	5.2	1.6	0.7	72	7	21	0.066	
ENT. ARCINAS	163.00	1	0	5517	76.2	5.1	4.8	2.6	3.7	5.4	1.5	0.7	76	5	19	0.068	

34 CARR : SAN LUIS POTOSI - LAGOS DE MORENO

CLAVE: 00133

RUTA : MEX-070-080

AÑO : 2006

L U G A R	E S T A C I O N				C L A S I F I C A C I O N V E H I C U L A R E N P O R C I E N T O .												
	KM	TE	SC	TDPA	A	B	C2	C3	T3S2	T3S3	T3S2R4	OTROS	A	B	C	K'	D
SAN LUIS POTOSI	0.00	3	1	6717	71.7	7.0	7.1	3.4	4.5	2.4	0.2	3.7	72	7	21	0.073	0.501

ZACATECAS

34 CARR : SAN LUIS POTOSI - LAGOS DE MORENO

CLAVE: 00133

RUTA : MEX-070-080

AÑO : 2006

L U G A R	E S T A C I O N				C L A S I F I C A C I O N V E H I C U L A R E N P O R C I E N T O .												
	KM	TE	SC	TDPA	A	B	C2	C3	T3S2	T3S3	T3S2R4	OTROS	A	B	C	K'	D
SAN LUIS POTOSI	0.00	3	2	6686	74.5	6.0	7.1	3.4	4.6	1.3	0.1	3.0	74	6	20	0.081	0.501
X. PERIFERICO SAN LUIS POTOSI	8.41	3	0	7777	73.1	5.5	6.4	4.9	4.4	3.5	0.0	2.2	73	6	21	0.110	0.501
EL TEPETATE	41.90	1	0	4747	76.4	2.7	6.7	5.0	3.3	1.8	0.0	4.1	76	3	21	0.105	0.511
EL TEPETATE	41.90	3	0	4236	76.6	2.7	6.6	4.8	3.3	1.9	0.0	4.1	76	3	21	0.097	0.502
VILLA DE ARRIAGA	61.90	3	0	4806	72.1	9.1	7.6	3.3	2.6	3.7	0.0	1.6	72	9	19	0.081	0.501
LIM. EDOS. TERM. S.L.P. PPIA. ZAC.	71.00	0	0														
LIM. EDOS. TERM. ZAC. PPIA. JAL.	81.70	0	0														
OJUELOS DE JALISCO	82.00	1	0	6034	70.1	8.0	6.4	4.7	4.8	1.9	2.3	1.8	70	8	22	0.075	
OJUELOS DE JALISCO	82.00	3	0	5503	67.0	9.3	6.3	6.0	5.8	2.6	1.6	1.4	67	9	24	0.069	
X. C. LEON - AGUASCALIENTES	146.90	1	0	6973	69.8	7.2	5.7	5.6	6.1	3.3	1.2	1.1	70	7	23	0.073	
LAGOS DE MORENO	150.00	0	0														

35 CARR : SAN RAFAEL - VILLA GARCIA

CLAVE: 00525

RUTA : AGS-ZAC

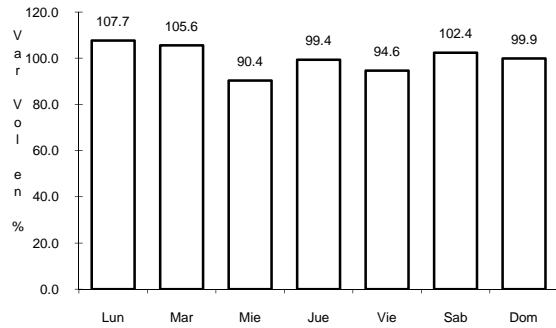
AÑO : 2006

L U G A R	E S T A C I O N				C L A S I F I C A C I O N V E H I C U L A R E N P O R C I E N T O .												
	KM	TE	SC	TDPA	A	B	C2	C3	T3S2	T3S3	T3S2R4	OTROS	A	B	C	K'	D
T. C. ENT. LA CALAVERA - ENT. SAN PEDRO	0.00	3	0	1805	85.1	3.2	5.9	3.4	0.8	0.6	0.8	0.2	85	3	12	0.086	
LIM. EDOS. TERM. AGS. PPIA. ZAC.	3.00	0	0														
VILLA GARCIA	10.00	1	0	2248	81.6	5.0	6.8	4.1	1.3	0.3	0.8	0.1	82	5	13	0.096	

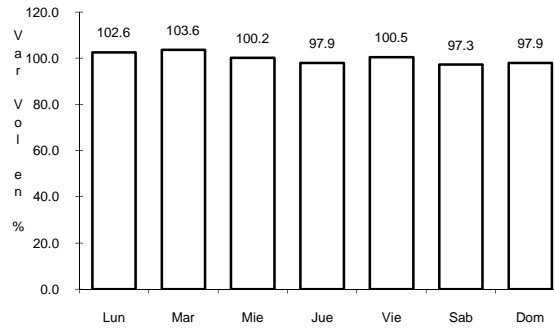
1 CARR: ENT. LA CHICHARRONA - CUENCAME

CLAVE: 00152

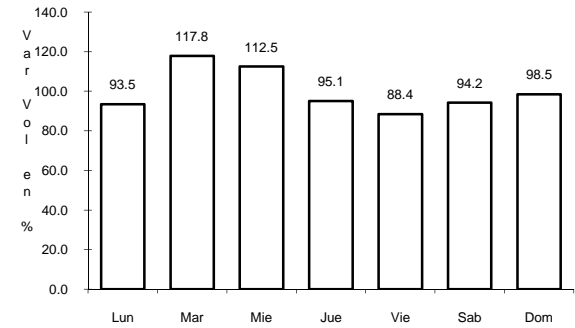
ruta: MEX-049



Km: 0.00 Tipo: 3 Sent: 1



Km: 0.00 Tipo: 3 Sent: 2

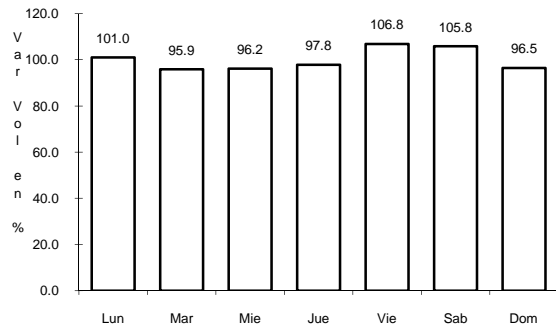


Km: 199.10 Tipo: 1 Sent: 0

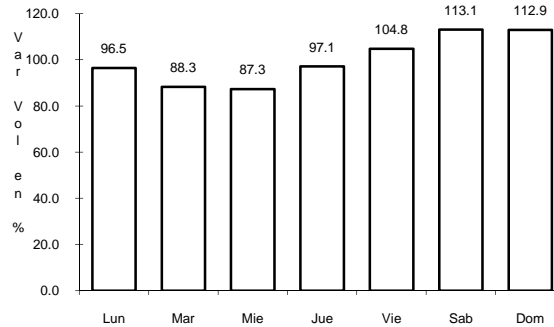
2 CARR: ENT. MORELOS - SALTILLO

CLAVE: 00149

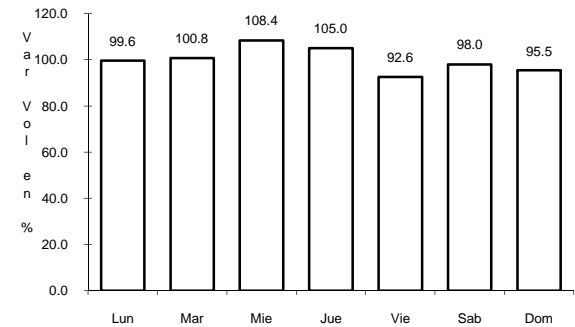
ruta: MEX-054



Km: 0.00 Tipo: 3 Sent: 0



Km: 354.00 Tipo: 1 Sent: 1

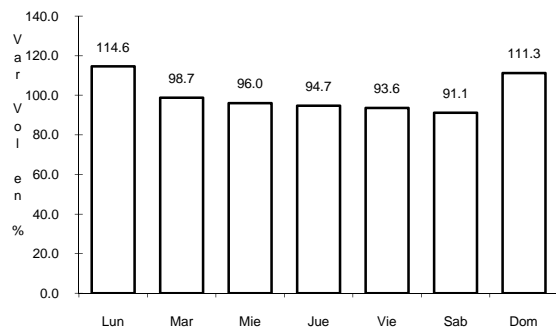


Km: 354.00 Tipo: 1 Sent: 2

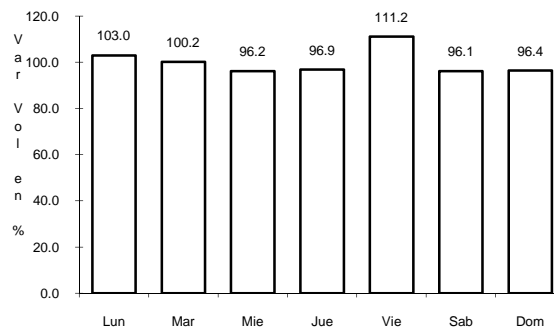
3 CARR: ENT. OJO CALIENTE - ENT. OJUELOS DE JALISCO

CLAVE: 00126

ruta: ZAC



Km: 0.00 Tipo: 3 Sent: 0



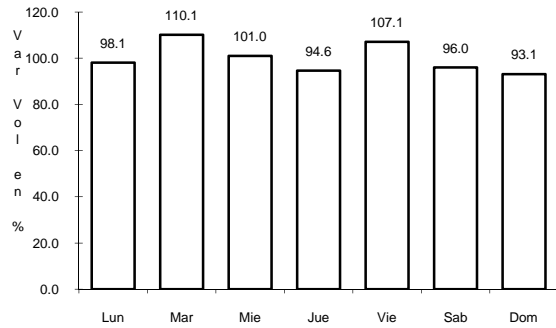
Km: 16.00 Tipo: 3 Sent: 0



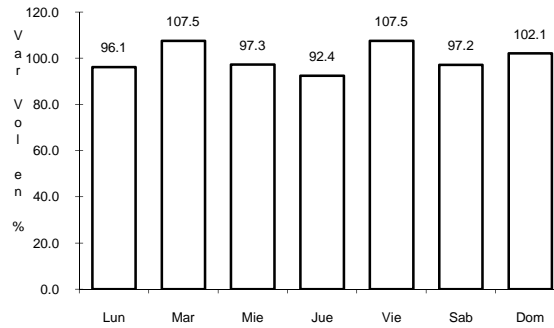
4 CARR: RAMAL A SAN PEDRO PIEDRA GORDA

CLAVE: 00553

RUTA: ZAC-AGS



Km: 0.00 Tipo: 3 Sent: 0

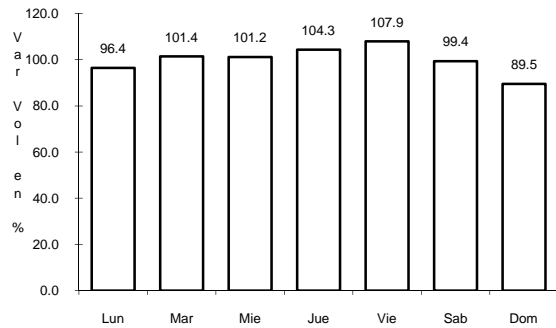


Km: 9.00 Tipo: 1 Sent: 0

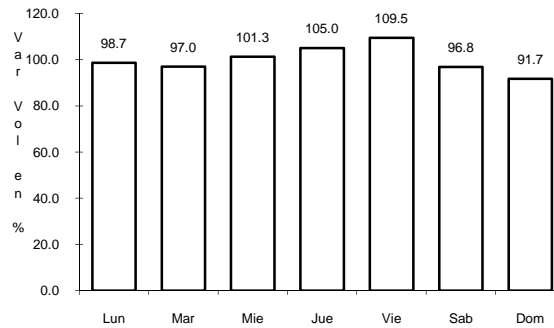
5 CARR: ZACATECAS - DURANGO

CLAVE: 00544

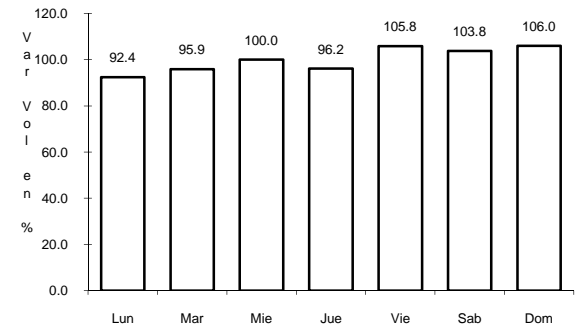
RUTA: MEX-045



Km: 6.40 Tipo: 3 Sent: 1



Km: 6.40 Tipo: 3 Sent: 2

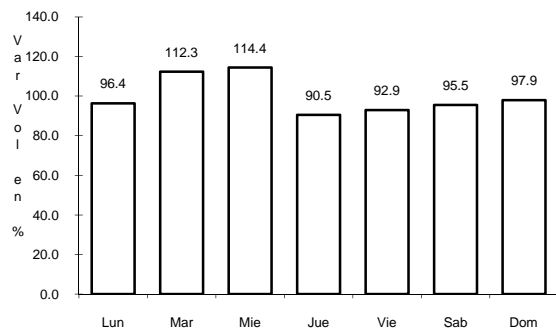


Km: 261.70 Tipo: 1 Sent: 0

6 CARR: CALERA DE VICTOR ROSALES - SANTIAGUILLO

CLAVE: 32016

RUTA: ZAC-016



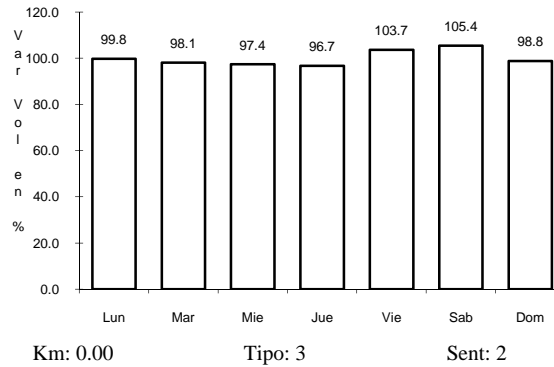
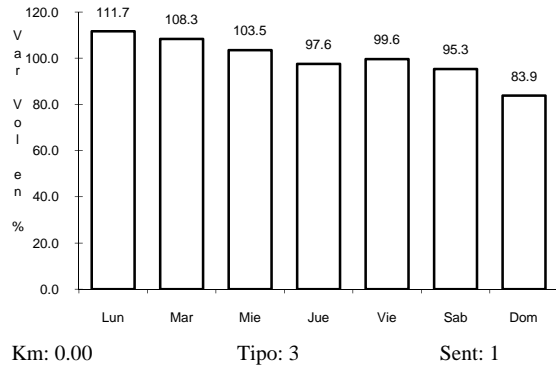
Km: 0.00 Tipo: 3 Sent: 0



10 CARR: FRESNILLO - PLATEROS

CLAVE: 32022

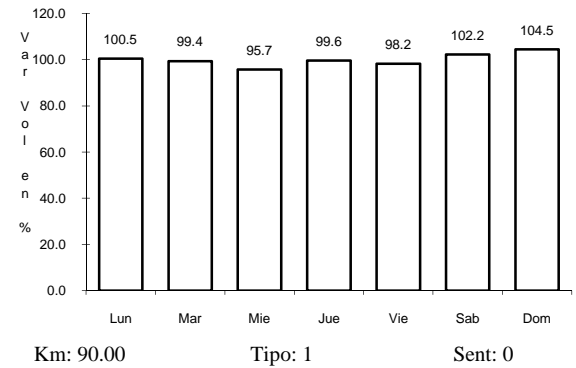
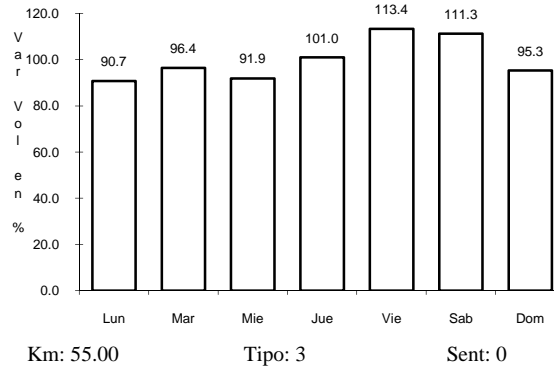
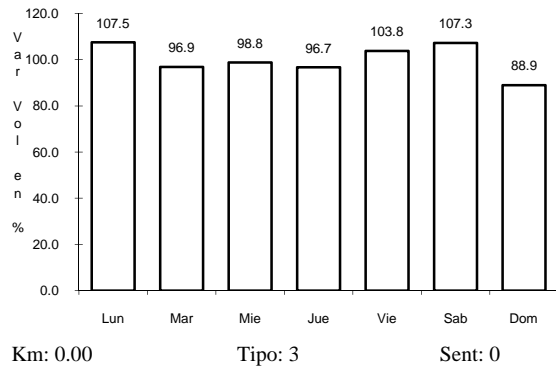
ruta: ZAC-022



11 CARR: FRESNILLO - VALPARAISO

CLAVE: 32547

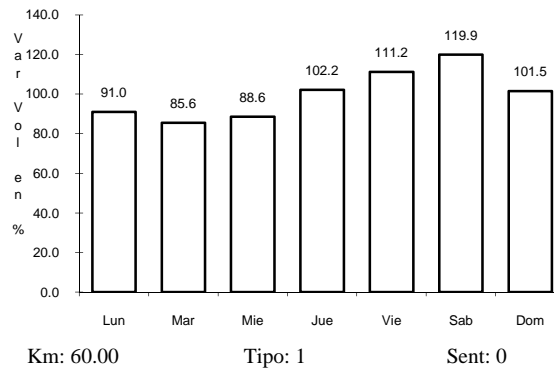
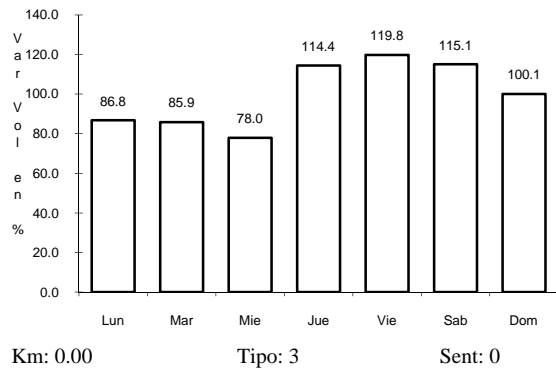
ruta: MEX-044



12 CARR: JEREZ - FRESNILLO

CLAVE: 32542

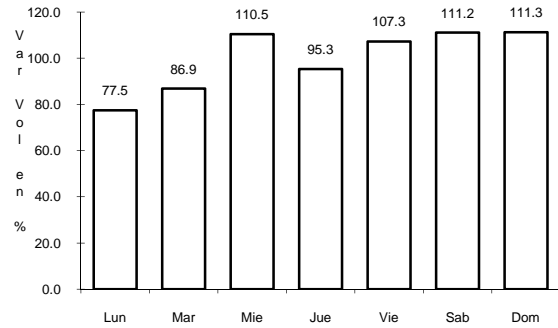
ruta: MEX.



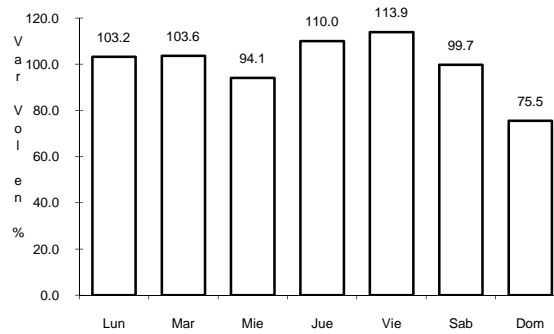
15 CARR: LIBRAMIENTO DE GUADALUPE - ZACATECAS

CLAVE: 32582

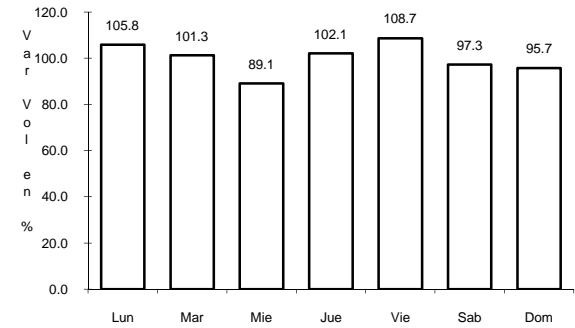
RUTA: MEX



Km: 0.00 Tipo: 3 Sent: 0



Km: 13.00 Tipo: 3 Sent: 0

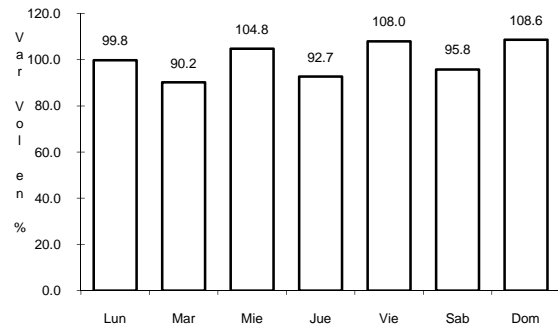


Km: 17.50 Tipo: 1 Sent: 0

16 CARR: RAMAL A AEROPUERTO ZACATECAS

CLAVE: 32546

RUTA: MEX

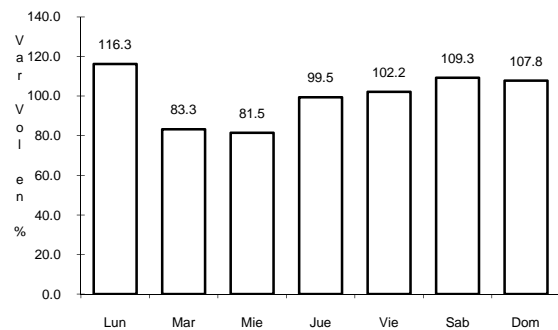


Km: 0.00 Tipo: 3 Sent: 0

17 CARR: RAMAL A CONCEPCION DEL ORO

CLAVE: 32565

RUTA: MEX

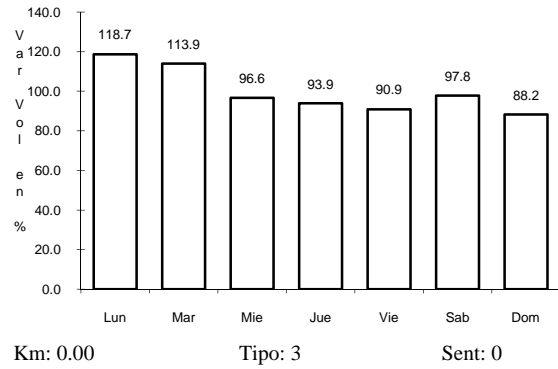


Km: 0.00 Tipo: 3 Sent: 0

18 CARR: RAMAL A FRANCISCO MURGUIA (NIEVES)

CLAVE: 32541

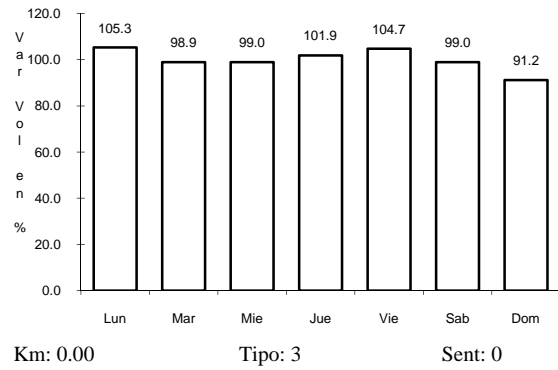
RUTA: MEX-114



19 CARR: RAMAL A GRAL. PANFILO NATERA

CLAVE: 32559

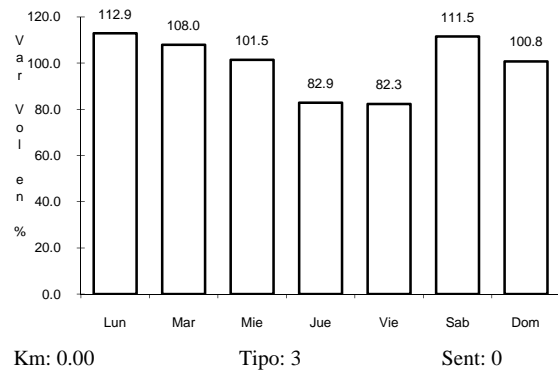
RUTA: MEX



20 CARR: RAMAL A LORETO

CLAVE: 32067

RUTA: ZAC

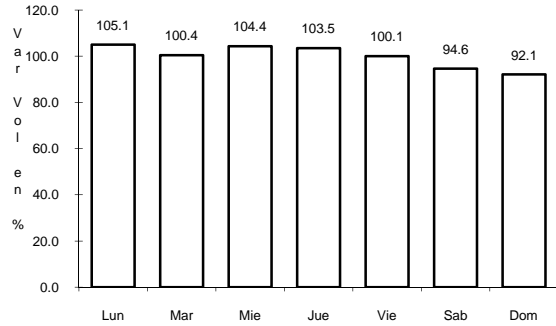




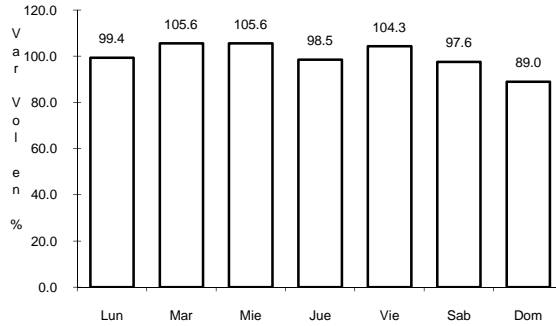
24 CARR: AGUASCALIENTES - JALPA

CLAVE: 00095

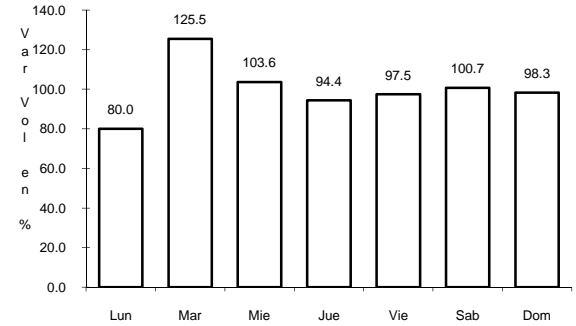
RUTA: MEX-070



Km: 0.00 Tipo: 3 Sent: 1



Km: 0.00 Tipo: 3 Sent: 2

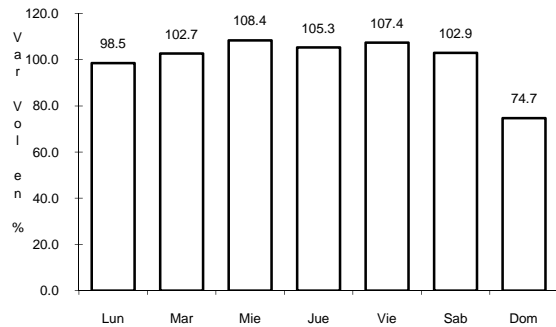


Km: 91.10 Tipo: 1 Sent: 0

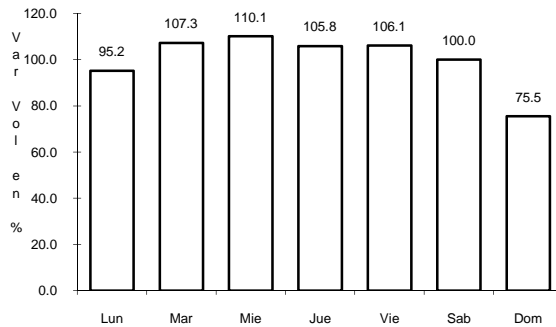
25 CARR: AGUASCALIENTES - ZACATECAS

CLAVE: 00524

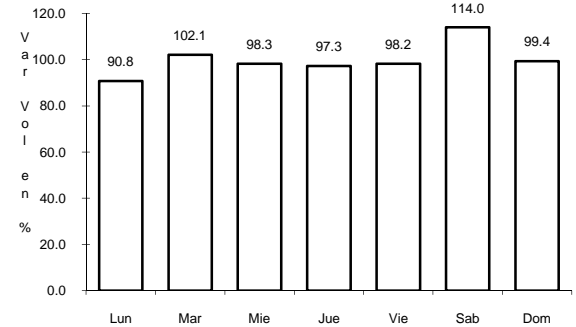
RUTA: MEX-045



Km: 6.00 Tipo: 1 Sent: 1



Km: 6.00 Tipo: 1 Sent: 2

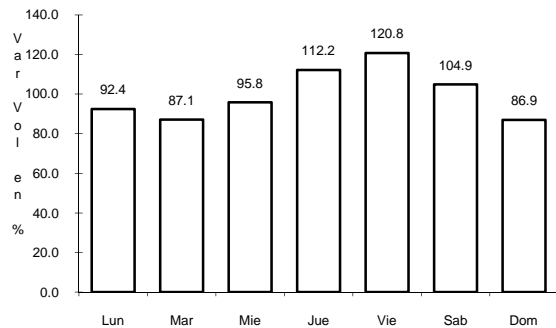


Km: 65.80 Tipo: 3 Sent: 0

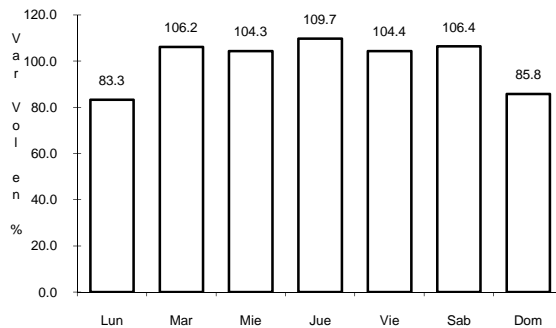
26 CARR: CARBONERA - T. C. (ENT. MORELOS - SALTILLO)

CLAVE: 00218

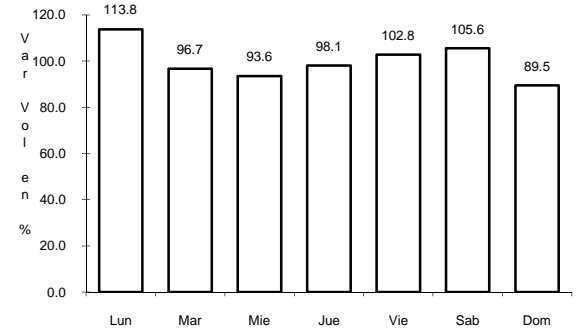
RUTA: MEX-062



Km: 0.00 Tipo: 3 Sent: 0



Km: 18.00 Tipo: 3 Sent: 0

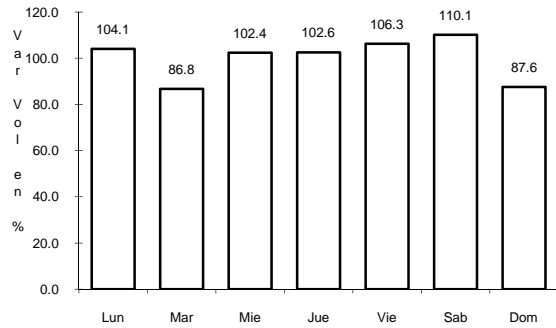


Km: 112.00 Tipo: 1 Sent: 0

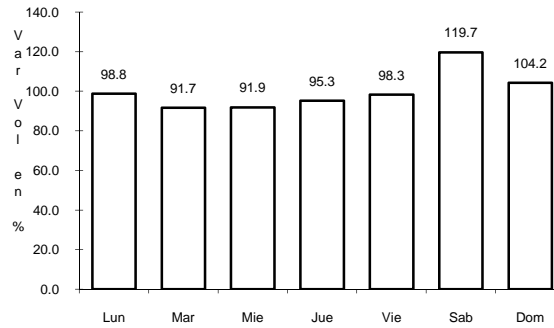
27 CARR: ENT. RIVIER - SAN MARCOS

CLAVE: 00285

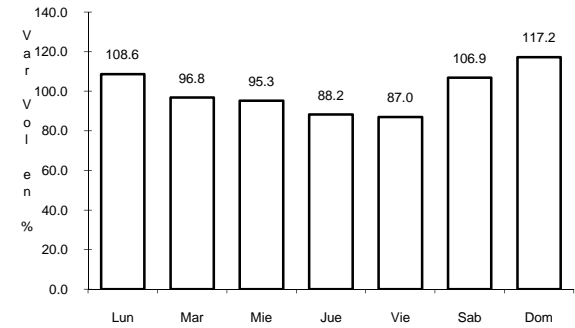
RUTA: MEX-066



Km: 0.00 Tipo: 3 Sent: 0



Km: 30.00 Tipo: 3 Sent: 0

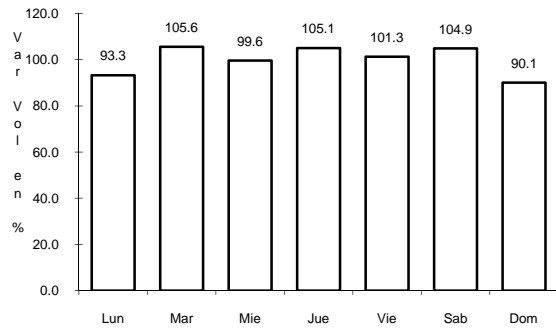


Km: 56.00 Tipo: 1 Sent: 0

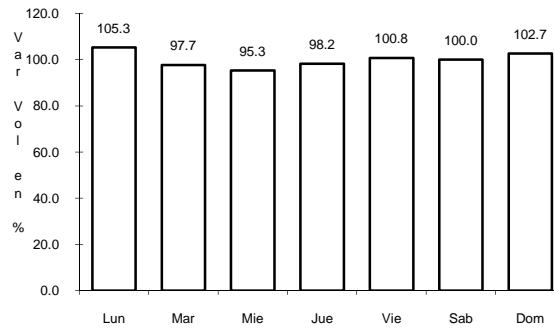
28 CARR: TEPATITLAN - JARALILLO

CLAVE: 00146

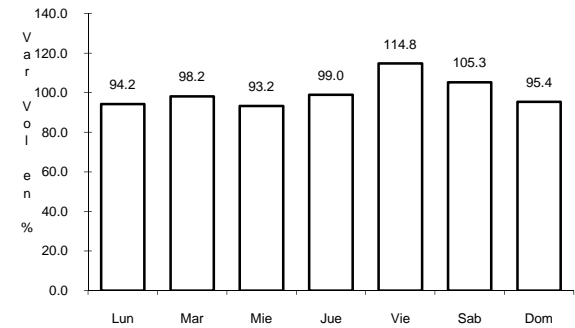
RUTA: MEX-JAL-ZAC



Km: 0.00 Tipo: 3 Sent: 0



Km: 72.45 Tipo: 3 Sent: 0

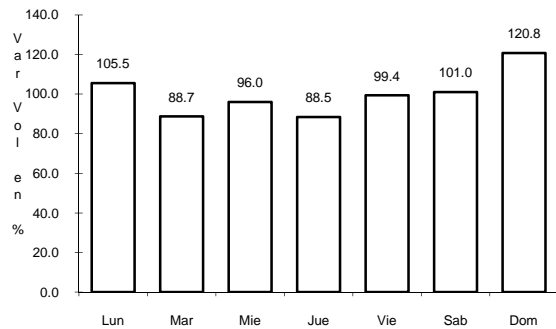


Km: 157.00 Tipo: 1 Sent: 0

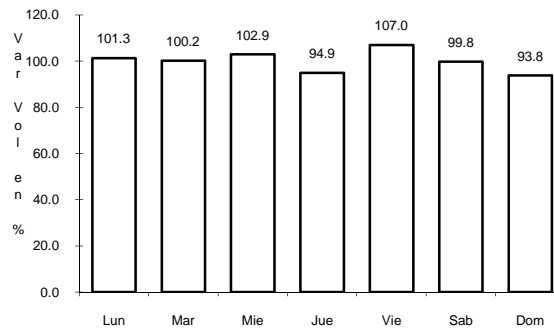
29 CARR: ENT. TESISTAN - ENT. MALPASO

CLAVE: 00584

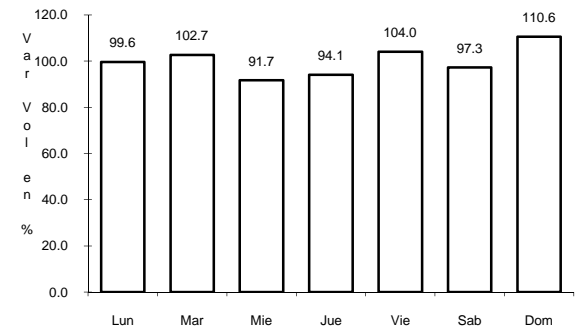
RUTA: MEX-023



Km: 0.00 Tipo: 3 Sent: 0



Km: 165.00 Tipo: 3 Sent: 0



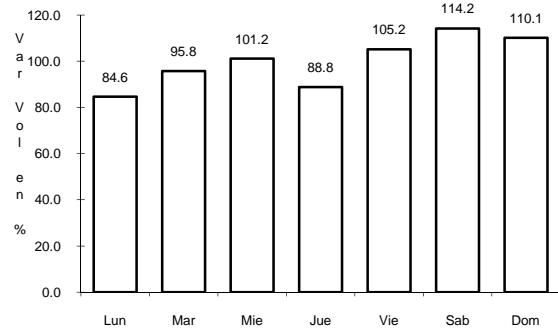
Km: 275.00 Tipo: 1 Sent: 0



30 CARR: GUADALAJARA - ZACATECAS

CLAVE: 00150

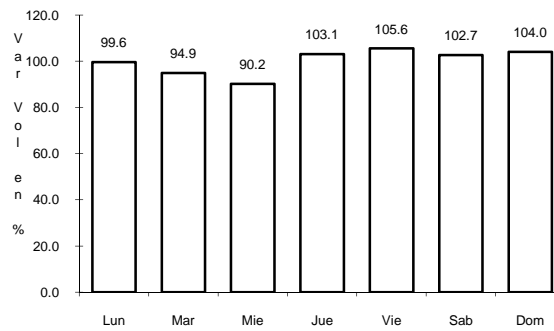
ruta: MEX-054



Km: 6.19

Tipo: 3

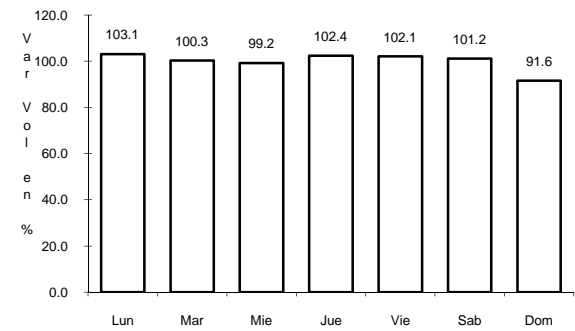
Sent: 0



Km: 189.40

Tipo: 3

Sent: 0



Km: 311.83

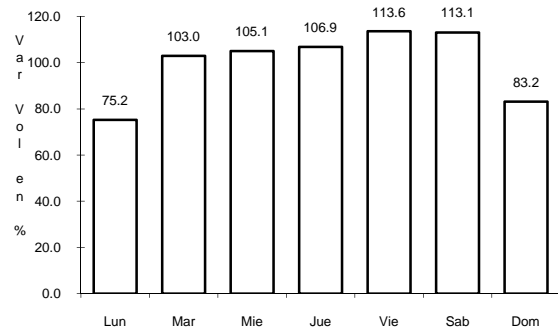
Tipo: 1

Sent: 0

31 CARR: PROVIDENCIA - LUIS MOYA

CLAVE: 00112

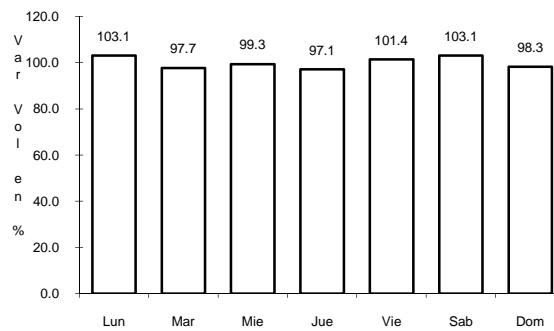
ruta: MEX-071



Km: 0.00

Tipo: 3

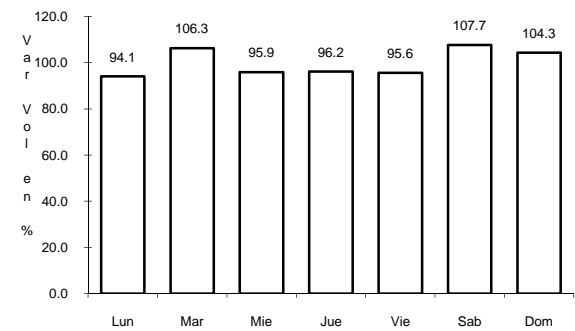
Sent: 0



Km: 21.22

Tipo: 3

Sent: 0



Km: 43.50

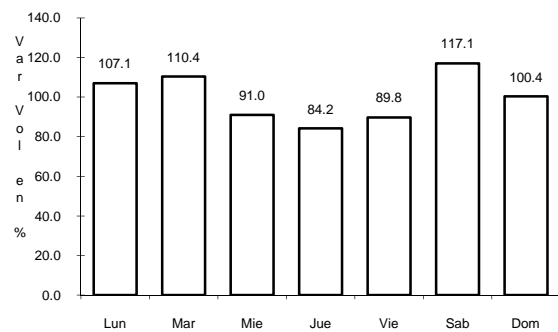
Tipo: 1

Sent: 0

32 CARR: SAN GIL - JARILLAS

CLAVE: 00527

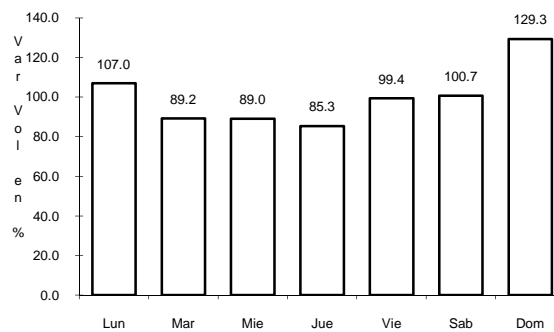
ruta: AGS-012



Km: 0.00

Tipo: 3

Sent: 0



Km: 5.40

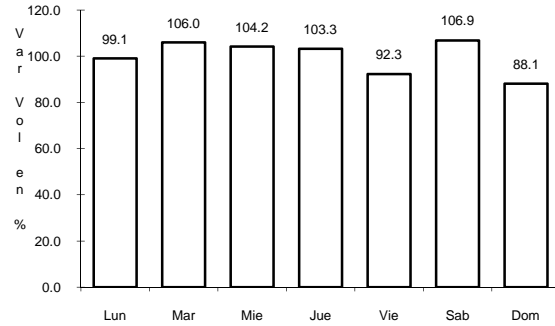
Tipo: 1

Sent: 0

33 CARR: SAN LUIS POTOSI - ENT. ARCINAS

CLAVE: 00134

ruta: MEX-149



Km: 162.98

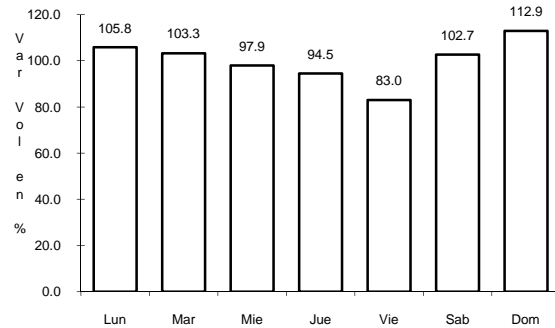
Tipo: 1

Sent: 0

34 CARR: SAN LUIS POTOSI - LAGOS DE MORENO

CLAVE: 00133

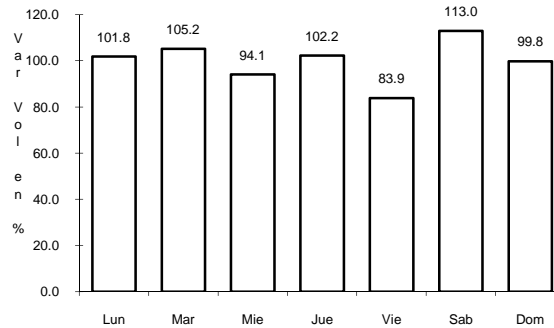
ruta: MEX-070-080



Km: 0.00

Tipo: 3

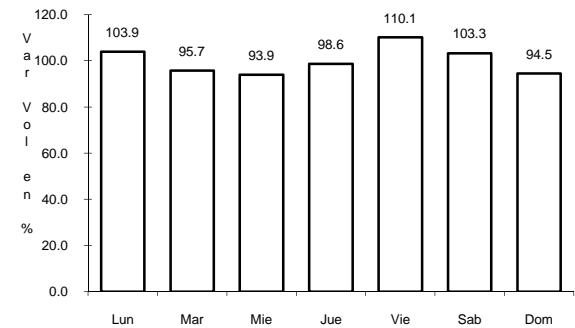
Sent: 1



Km: 0.00

Tipo: 3

Sent: 2



Km: 146.90

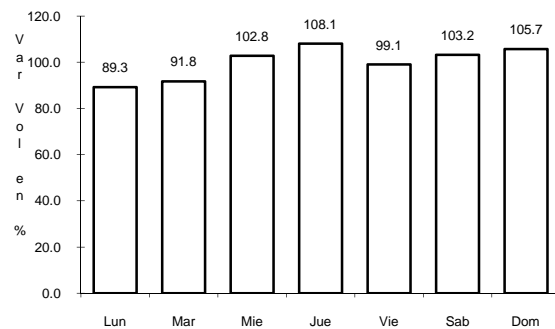
Tipo: 1

Sent: 0

35 CARR: SAN RAFAEL - VILLA GARCIA

CLAVE: 00525

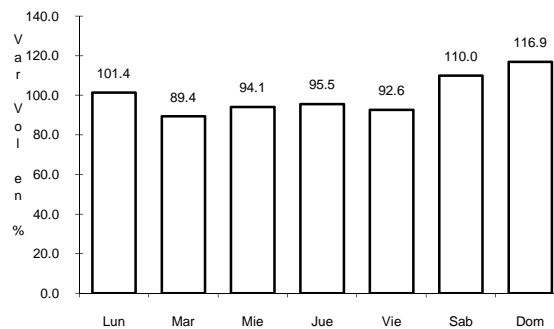
ruta: AGS-ZAC



Km: 0.00

Tipo: 3

Sent: 0



Km: 10.00

Tipo: 1

Sent: 0