

ZACATECAS

---RED FEDERAL LIBRE---

1 Aguascalientes - Jalpa	MEX-070
2 Aguascalientes - Zacatecas	MEX-045
3 Blvd. Guadalupe - Zacatecas - La Escondida	MEX-045
4 Carbonera - T. C. (Ent. Morelos - Saltillo)	MEX-062
5 Ent. La Chicharrona - Cuencamé	MEX-049
6 Ent. Morelos - Ent. Noria de Gringos	MEX-045
7 Ent. Morelos - Saltillo	MEX-054
8 Ent. Rivier - San Marcos	MEX-066
9 Ent. Tesislán - Ent. Malpaso	MEX-023
10 Fresnillo - Valparaíso	MEX-044
11 Guadalajara - Zacatecas	MEX-054
12 Jerez - Fresnillo	MEX-023
13 Libramiento de Guadalupe - Zacatecas	MEX-045
14 Providencia - Luis Moya	MEX-071
15 Ramal a Aeropuerto Zacatecas	MEX-045
16 Ramal a Concepción del Oro	MEX-054
17 Ramal a Francisco Murguía (Nieves)	MEX-049
18 Ramal a Gral. Pánfilo Natera	MEX-049
19 Ramal a Ruinas de Chicomostoc	MEX-045
20 Ramal a San Martín	MEX-045
21 Ramal a Villa de Cos	MEX-054
22 San Luis Potosí - Ent. Arcinas	MEX-049
23 San Luis Potosí - Lagos de Moreno	MEX-070-080
24 Zacatecas - Durango	MEX-045

---RED FEDERAL DE CUOTA---

25 Cuauhtémoc - Osiris (Cuota)	MEX-045D
26 Libramiento de Fresnillo (Cuota)	MEX-045D
27 Libramiento de Víctor Rosales (Cuota)	MEX-045D

---RED ESTATAL LIBRE---

28 Calera de Víctor Rosales - Santiaguillo	ZAC-016
29 Cieneguillas - Zacatecas	ZAC
30 Corral de Piedras - Tlaltenango	ZAC
31 Ent. Ojo Caliente - Ent. Ojuelos de Jalisco	ZAC
32 Fresnillo - Ent. Bañón	ZAC
33 Fresnillo - Plateros	ZAC-022
34 Ramal a Loreto	ZAC
35 Ramal a Nochistlán	ZAC
36 Ramal a San Pedro Piedra Gorda	ZAC-AGS
37 San Gil - Jarillas	AGS-012-ZAC
38 San Rafael - Villa García	AGS-ZAC
39 Santa Mónica - Pozo de Gamboa	ZAC
40 Sombrerete - González Ortega	ZAC

---RED ESTATAL DE CUOTA---

41 Libramiento Noreste de Zacatecas (Cuota)	ZAC-D
---	-------

---CARRETERAS INTEGRADAS POR TRAMOS FEDERALES Y ESTATALES---

42 Guadalupe - Cosío	MEX-ZAC
43 Tepatitlán - Jaralillo	MEX-JAL-ZAC

ZACATECAS

1 CARR: Aguascalientes - Jalpa

CLAVE: 00095

RUTA: MEX-070

AÑO: 2016

LUGAR	ESTACION				CLASIFICACION VEHICULAR EN PORCIENTO										COORDENADAS					
	KM	TE	SC	TDPA	M	A	B	C2	C3	T3S2	T3S3	T3S2R4	OTROS	A	B	C	K'	D	LATITUD	LONGITUD
Aguascalientes	0.00	3	1	10343	1.0	89.5	0.4	6.0	1.2	1.0	0.5	0.3	0.1	90.5	0.4	9.1	0.096	0.548	21.874615	-102.337530
Aguascalientes	0.00	3	2	8545	1.2	89.0	0.4	6.1	1.3	1.1	0.5	0.3	0.1	90.2	0.4	9.4	0.080	0.548	21.874636	-102.337623
T. Der. Jesús María	7.30	1	1	8247	1.0	84.9	1.4	8.3	1.4	1.5	0.9	0.5	0.1	85.9	1.4	12.7	0.105	0.507	21.881444	-102.363279
T. Der. Jesús María	7.30	1	2	8490	1.5	82.5	1.6	9.7	1.4	1.6	1.1	0.5	0.1	84.0	1.6	14.4	0.087	0.507	21.881560	-102.363025
T. Izq. Villa Hidalgo	7.80	3	1	5673	0.4	89.7	0.4	7.1	0.8	0.7	0.7	0.1	0.1	90.1	0.4	9.5	0.121	0.504	21.884512	-102.374764
T. Izq. Villa Hidalgo	7.80	3	2	5768	0.4	88.8	0.4	7.8	0.8	0.8	0.8	0.1	0.1	89.2	0.4	10.4	0.125	0.504	21.884528	-102.374861
Libramiento Poniente de Aguascalientes	11.00	1	1	5045	0.7	86.8	0.8	9.4	1.0	0.8	0.3	0.1	0.1	87.5	0.8	11.7	0.142	0.509	21.889722	-102.394167
Libramiento Poniente de Aguascalientes	11.00	1	2	4874	0.9	85.3	0.8	10.4	1.1	1.0	0.3	0.1	0.1	86.2	0.8	13.0	0.088	0.509	21.889722	-102.394167
Libramiento Poniente de Aguascalientes	11.00	3	1	6010	0.7	89.8	0.8	6.8	0.7	0.7	0.4	0.0	0.1	90.5	0.8	8.7	0.116	0.533	21.892128	-102.403144
Libramiento Poniente de Aguascalientes	11.00	3	2	5264	1.4	88.0	0.9	7.5	0.9	0.8	0.4	0.0	0.1	89.4	0.9	9.7	0.133	0.533	21.892126	-102.403144
T. Der. Gracias a Dios	20.00	3	0	9600	0.7	87.0	0.6	6.2	1.0	3.1	0.9	0.2	0.3	87.7	0.6	11.7	0.094	0.515	21.887222	-102.464778
T. Izq. Malpaso	45.10	1	0	6015	0.4	84.9	0.9	9.6	1.3	2.3	0.3	0.1	0.2	85.3	0.9	13.8	0.080	0.501	21.880945	-102.653395
T. Der. Presa La Codorniz	49.30	3	1	9581	1.6	90.9	0.2	6.5	0.5	0.2	0.1	0.0	0.0	92.5	0.2	7.3	0.087	0.508	21.863734	-102.692508
T. Der. Presa La Codorniz	49.30	3	2	9895	1.5	89.9	0.3	7.5	0.5	0.2	0.1	0.0	0.0	91.4	0.3	8.3	0.084	0.508	21.863517	-102.692431
Calvillo	52.30	3	1	4767	0.4	89.6	0.5	7.4	0.9	0.8	0.3	0.0	0.1	90.0	0.5	9.5	0.084	0.502	21.836469	-102.743803
Calvillo	52.30	3	2	4731	1.1	87.8	0.5	8.5	0.9	0.8	0.3	0.0	0.1	88.9	0.5	10.6	0.077	0.502	21.836444	-102.743806
T. Der. Jaltiche de Abajo	63.80	3	0	2542	0.8	84.5	1.2	10.6	1.6	0.9	0.3	0.0	0.1	85.3	1.2	13.5	0.096	0.511	21.771306	-102.804250
Lim. Edos. Term. Ags. Ppia. Zac.	65.66																			
T. C. Guadalajara - Zacatecas	90.66	1	0	4857	2.5	85.0	0.6	10.3	0.8	0.5	0.2	0.0	0.1	87.5	0.6	11.9	0.122	0.541	21.652417	-102.964083

2 CARR: Aguascalientes - Zacatecas

CLAVE: 00524

RUTA: MEX-045

AÑO: 2016

LUGAR	ESTACION				CLASIFICACION VEHICULAR EN PORCIENTO										COORDENADAS					
	KM	TE	SC	TDPA	M	A	B	C2	C3	T3S2	T3S3	T3S2R4	OTROS	A	B	C	K'	D	LATITUD	LONGITUD
Aguascalientes	0.00																			
T. Izq. Pocitos	6.00	1	1	19781	1.9	91.2	1.3	4.1	0.3	0.3	0.6	0.1	0.2	93.1	1.3	5.6	0.074	0.502	21.904248	-102.292586
T. Izq. Pocitos	6.00	1	2	19645	2.2	90.3	1.5	4.5	0.3	0.3	0.6	0.1	0.2	92.5	1.5	6.0	0.071	0.502	21.904195	-102.292377
T. Der. Loreto	9.83	3	1	24610	1.1	84.0	1.3	4.9	1.2	3.4	2.1	1.3	0.7	85.1	1.3	13.6	0.092	0.506	21.973917	-102.289450
T. Der. Loreto	9.83	3	2	24058	1.1	82.9	1.3	5.4	1.4	3.7	2.1	1.3	0.8	84.0	1.3	14.7	0.084	0.506	21.973623	-102.289439
Santa Fé	16.00	1	1	23638	1.0	81.5	1.7	6.5	2.0	3.9	1.4	1.8	0.2	82.5	1.7	15.8	0.088	0.510	22.016270	-102.286081
Santa Fé	16.00	1	2	24592	1.1	79.1	2.0	7.4	2.2	4.5	1.6	1.9	0.2	80.2	2.0	17.8	0.088	0.510	22.016262	-102.286070
Santa Fé	16.00	3	1	24222	0.5	82.1	1.9	6.6	1.9	3.7	1.3	1.8	0.2	82.6	1.9	15.5	0.100	0.504	22.027153	-102.283370
Santa Fé	16.00	3	2	24594	0.5	80.4	2.1	7.3	2.2	3.9	1.4	2.0	0.2	80.9	2.1	17.0	0.090	0.504	22.027148	-102.283356
La Concepción	18.00	3	1	19868	0.8	80.9	1.7	6.7	1.8	4.3	1.4	1.9	0.5	81.7	1.7	16.6	0.085	0.529	22.035142	-102.281433

ZACATECAS

2 CARR: Aguascalientes - Zacatecas

CLAVE: 00524

RUTA: MEX-045

AÑO: 2016

LUGAR	ESTACION				CLASIFICACION VEHICULAR EN PORCIENTO										COORDENADAS					
	KM	TE	SC	TDPA	M	A	B	C2	C3	T3S2	T3S3	T3S2R4	OTROS	A	B	C	K'	D	LATITUD	LONGITUD
La Concepción	18.00	3	2	22352	0.7	78.9	1.9	7.3	2.1	5.1	1.5	2.0	0.5	79.6	1.9	18.5	0.095	0.529	22.035134	-102.281421
San Francisco de Los Romo	22.73	1	1	5851	3.2	87.1	0.3	6.4	0.5	1.3	0.6	0.5	0.1	90.3	0.3	9.4	0.071	0.504	22.077073	-102.272818
San Francisco de Los Romo	22.73	1	2	5757	3.1	86.4	0.3	7.0	0.5	1.4	0.7	0.5	0.1	89.5	0.3	10.2	0.064	0.504	22.077073	-102.272818
T. Der. Estación Pabellón	31.00	1	1	13969	0.8	79.4	2.8	5.8	2.3	4.9	1.4	2.3	0.3	80.2	2.8	17.0	0.081	0.523	22.133414	-102.287130
T. Der. Estación Pabellón	31.00	1	2	15345	0.9	76.5	3.0	6.9	2.4	5.9	1.5	2.6	0.3	77.4	3.0	19.6	0.078	0.523	22.133444	-102.287000
T. Der. Estación Pabellón	31.00	3	1	13736	0.9	74.3	3.4	8.2	2.7	6.1	1.4	2.6	0.4	75.2	3.4	21.4	0.077	0.503	22.153121	-102.295661
T. Der. Estación Pabellón	31.00	3	2	13911	1.0	72.3	4.0	8.8	3.0	6.3	1.5	2.7	0.4	73.3	4.0	22.7	0.079	0.503	22.153119	-102.295655
Rincón de Romos	40.90	3	0	5341	2.0	85.7	0.5	8.1	0.3	2.9	0.2	0.0	0.3	87.7	0.5	11.8	0.085	0.511	22.237405	-102.317598
La Punta	51.00	1	1	8380	0.6	71.4	3.8	7.5	2.5	7.4	2.3	3.7	0.8	72.0	3.8	24.2	0.088	0.513	22.313919	-102.296688
La Punta	51.00	1	2	7967	0.6	69.0	4.3	8.0	2.6	8.4	2.3	3.9	0.9	69.6	4.3	26.1	0.097	0.513	22.313924	-102.296691
Cosío	56.00	3	1	6860	0.6	68.4	4.9	8.6	2.3	8.2	2.3	3.9	0.8	69.0	4.9	26.1	0.092	0.505	22.372546	-102.298504
Cosío	56.00	3	2	7011	0.8	65.0	5.0	9.4	2.4	9.6	2.5	4.5	0.8	65.8	5.0	29.2	0.093	0.505	22.372585	-102.298439
Lim. Edos. Term. Ags. Ppia. Zac.	62.67																			
Luis Moya	65.80	1	0	3843	1.7	75.5	2.7	10.3	2.8	3.3	1.8	1.6	0.3	77.2	2.7	20.1	0.086	0.514	22.424905	-102.255374
Luis Moya	65.80	3	0	5917	1.3	76.8	2.3	12.4	2.2	2.8	1.3	0.8	0.1	78.1	2.3	19.6	0.093	0.502	22.451742	-102.255984
T. Der. San Luis Potosí	100.00	1	0	4685	0.7	80.3	1.8	10.6	1.7	2.6	1.4	0.7	0.2	81.0	1.8	17.2	0.097	0.500	22.711754	-102.325075
T. Der. San Luis Potosí	100.00	3	1	6127	0.8	68.8	4.1	7.9	3.4	8.3	2.5	3.5	0.7	69.6	4.1	26.3	0.069	0.511	22.729358	-102.337622
T. Der. San Luis Potosí	100.00	3	2	5865	0.8	65.1	4.2	9.2	3.7	9.9	2.6	3.7	0.8	65.9	4.2	29.9	0.077	0.511	22.729306	-102.337666
T. Izq. Aguascalientes (Cuota)	113.50	1	1	10578	0.8	73.5	2.6	10.7	2.6	5.4	1.5	2.7	0.2	74.3	2.6	23.1	0.078	0.506	22.751232	-102.431517
T. Izq. Aguascalientes (Cuota)	113.50	1	2	10313	0.8	71.1	2.9	11.7	3.0	5.8	1.6	2.9	0.2	71.9	2.9	25.2	0.085	0.506	22.751244	-102.431510
T. Izq. Libramiento de Guadalupe y Zacatecas	118.20	1	1	19868	1.4	81.5	2.1	7.1	2.0	3.4	1.0	1.3	0.2	82.9	2.1	15.0	0.095	0.520	22.750754	-102.491899
T. Izq. Libramiento de Guadalupe y Zacatecas	118.20	1	2	18357	1.1	80.1	2.3	7.9	2.2	3.8	1.0	1.4	0.2	81.2	2.3	16.5	0.091	0.520	22.750723	-102.491860
Zacatecas	119.82																			

3 CARR: Blvd. Guadalupe - Zacatecas - La Escondida

CLAVE: 00544

RUTA: MEX-045

AÑO: 2016

LUGAR	ESTACION				CLASIFICACION VEHICULAR EN PORCIENTO										COORDENADAS					
	KM	TE	SC	TDPA	M	A	B	C2	C3	T3S2	T3S3	T3S2R4	OTROS	A	B	C	K'	D	LATITUD	LONGITUD
T. Izq. Lib. Guadalupe - Zacatecas (Alta)	0.00	3	1	23970	1.4	89.9	0.6	5.0	0.3	1.5	1.0	0.1	0.2	91.3	0.6	8.1	0.093	0.541	22.753840	-102.504502
T. Izq. Lib. Guadalupe - Zacatecas (Baja)	0.00	3	1	4641	2.0	90.3	0.3	6.0	0.4	0.4	0.5	0.0	0.1	92.3	0.3	7.4	0.101	0.600	22.753929	-102.504458
T. Izq. Lib. Guadalupe - Zacatecas (Alta)	0.00	3	2	28243	1.0	91.5	0.3	4.0	0.3	1.3	1.2	0.1	0.3	92.5	0.3	7.2	0.082	0.541	22.753829	-102.504517
T. Izq. Lib. Guadalupe - Zacatecas (Baja)	0.00	3	2	1011	1.8	84.2	3.2	9.6	0.4	0.4	0.3	0.0	0.1	86.0	3.2	10.8	0.121	0.600	22.753925	-102.504466
X. Av. Universidad	7.70	1	1	43145	1.1	92.8	0.6	3.9	0.1	0.6	0.7	0.1	0.1	93.9	0.6	5.5	0.076	0.509	22.765293	-102.559164
X. Av. Universidad	7.70	1	2	43618	1.5	91.7	0.7	4.2	0.1	0.8	0.8	0.1	0.1	93.2	0.7	6.1	0.069	0.509	22.765286	-102.559174

ZACATECAS

3 CARR: Blvd. Guadalupe - Zacatecas - La Escondida

CLAVE: 00544

RUTA: MEX-045

AÑO: 2016

LUGAR	ESTACION				CLASIFICACION VEHICULAR EN PORCIENTO										COORDENADAS					
	KM	TE	SC	TDPA	M	A	B	C2	C3	T3S2	T3S3	T3S2R4	OTROS	A	B	C	K'	D	LATITUD	LONGITUD
T. C. Zacatecas - Durango	14.50	1	1	18756	1.7	90.1	1.2	5.3	0.5	0.5	0.6	0.0	0.1	91.8	1.2	7.0	0.081	0.569	22.774762	-102.610881
T. C. Zacatecas - Durango	14.50	1	2	17035	2.0	89.0	1.4	5.7	0.5	0.6	0.7	0.0	0.1	91.0	1.4	7.6	0.072	0.569	22.774751	-102.610891

4 CARR: Carbonera - T. C. (Ent. Morelos - Saltillo)

CLAVE: 00218

RUTA: MEX-062

AÑO: 2016

LUGAR	ESTACION				CLASIFICACION VEHICULAR EN PORCIENTO										COORDENADAS					
	KM	TE	SC	TDPA	M	A	B	C2	C3	T3S2	T3S3	T3S2R4	OTROS	A	B	C	K'	D	LATITUD	LONGITUD
Carbonera	0.00	3	0	2819	10.3	73.2	1.1	10.3	1.5	2.6	0.6	0.3	0.1	83.5	1.1	15.4	0.089	0.509	23.703775	-100.627645
Cedral	18.00	1	0	3217	10.3	78.9	0.7	4.6	1.6	2.5	0.6	0.5	0.3	89.2	0.7	10.1	0.099	0.535	23.829378	-100.738903
Cedral	18.00	3	0	3403	9.0	71.9	0.8	12.9	1.4	2.8	0.4	0.6	0.2	80.9	0.8	18.3	0.098	0.503	23.805377	-100.707378
Lim. Edos. Term. S. L. P. Ppia. Zac.	79.20																			
T. C. Ent. Morelos - Saltillo	112.00	1	0	1287	4.6	74.7	1.1	15.3	1.9	1.9	0.3	0.1	0.1	79.3	1.1	19.6	0.106	0.507	24.155652	-101.490962

5 CARR: Ent. La Chicharrona - Cuencamé

CLAVE: 00152

RUTA: MEX-049

AÑO: 2016

LUGAR	ESTACION				CLASIFICACION VEHICULAR EN PORCIENTO										COORDENADAS					
	KM	TE	SC	TDPA	M	A	B	C2	C3	T3S2	T3S3	T3S2R4	OTROS	A	B	C	K'	D	LATITUD	LONGITUD
Ent. La Chicharrona	0.00	3	1	4668	0.3	60.7	5.3	8.4	3.1	13.4	3.3	4.7	0.8	61.0	5.3	33.7	0.066	0.506	23.304963	-102.958931
Ent. La Chicharrona	0.00	3	2	4784	0.4	56.6	5.9	8.9	3.4	15.0	3.6	5.4	0.8	57.0	5.9	37.1	0.088	0.506	23.305053	-102.958703
T. Der. Cañitas de Felipe Pescador	25.86	1	1	3767	0.6	56.1	5.1	7.5	3.3	16.4	4.2	5.8	1.0	56.7	5.1	38.2	0.066	0.513	23.524279	-102.959737
T. Der. Cañitas de Felipe Pescador	25.86	1	2	3968	0.5	52.0	5.5	8.1	3.5	18.4	4.6	6.4	1.0	52.5	5.5	42.0	0.081	0.513	23.524083	-102.959528
Río Grande	60.00	1	0	5623	1.0	54.4	5.4	9.9	2.3	16.1	4.2	5.8	0.9	55.4	5.4	39.2	0.099	0.502	23.779194	-103.012750
Río Grande	60.00	3	0	7073	0.7	48.8	5.6	11.4	2.7	18.8	4.6	6.0	1.4	49.5	5.6	44.9	0.069	0.513	23.880722	-103.097047
T. Der. Nieves	78.00	3	0	5766	0.7	41.7	7.4	11.2	3.3	21.6	5.3	7.5	1.3	42.4	7.4	50.2	0.063	0.514	23.924630	-103.160574
X. C. Juan Aldama - Miguel Auza	124.50	1	0	6739	0.8	47.2	6.2	9.3	3.2	20.1	5.4	6.8	1.0	48.0	6.2	45.8	0.062	0.501	24.272374	-103.400214
X. C. Juan Aldama - Miguel Auza	124.50	3	0	6018	0.8	44.6	7.8	8.9	3.4	20.9	4.6	8.5	0.5	45.4	7.8	46.8	0.066	0.500	24.296582	-103.410276
Lim. Edos. Term. Zac. Ppia. Dgo.	134.30																			
T. Der. Santa Clara	144.00	1	0	4885	0.9	39.5	6.8	8.5	4.9	23.6	5.1	9.4	1.3	40.4	6.8	52.8	0.063	0.505	24.435557	-103.486002
T. Der. Santa Clara	144.00	3	0	4478	0.8	35.0	7.7	9.0	3.2	26.6	6.7	9.6	1.4	35.8	7.7	56.5	0.066	0.509	24.445114	-103.492277
Cuencamé	199.10	1	0	4841	1.3	46.0	6.6	8.2	3.5	20.1	4.5	7.8	2.0	47.3	6.6	46.1	0.060	0.500	24.852671	-103.693022

ZACATECAS

6 CARR: Ent. Morelos - Ent. Noria de Gringos

CLAVE: 00544

RUTA: MEX-045

AÑO: 2016

LUGAR	ESTACION				CLASIFICACION VEHICULAR EN PORCIENTO													COORDENADAS		
	KM	TE	SC	TDPA	M	A	B	C2	C3	T3S2	T3S3	T3S2R4	OTROS	A	B	C	K'	D	LATITUD	LONGITUD
Ent. Morelos	0.00																			
T. Der. Lib. Noreste de Zacatecas	0.50	1	1	3604	2.3	75.5	2.9	7.7	2.0	4.4	1.7	2.5	1.0	77.8	2.9	19.3	0.078	0.509	22.861195	-102.628352
T. Der. Lib. Noreste de Zacatecas	0.50	1	2	3740	3.2	72.4	3.3	8.2	2.1	5.1	2.0	2.6	1.1	75.6	3.3	21.1	0.092	0.509	22.861245	-102.628442
T. Der. Lib. Noreste de Zacatecas	0.50	3	0	6095	1.3	73.9	3.3	9.3	2.6	5.0	1.8	2.3	0.5	75.2	3.3	21.5	0.087	0.513	22.858478	-102.636396
Ent. Noria de Gringos	2.20																			

7 CARR: Ent. Morelos - Saltillo

CLAVE: 00149

RUTA: MEX-054

AÑO: 2016

LUGAR	ESTACION				CLASIFICACION VEHICULAR EN PORCIENTO													COORDENADAS		
	KM	TE	SC	TDPA	M	A	B	C2	C3	T3S2	T3S3	T3S2R4	OTROS	A	B	C	K'	D	LATITUD	LONGITUD
T. C. Zacatecas - Durango	0.00	3	1	3555	2.6	71.3	3.9	9.4	2.2	6.3	1.6	2.0	0.7	73.9	3.9	22.2	0.095	0.511	22.869119	-102.619562
T. C. Zacatecas - Durango	0.00	3	2	3399	2.8	67.7	4.3	11.2	2.4	6.7	1.8	2.4	0.7	70.5	4.3	25.2	0.098	0.511	22.869040	-102.619506
T. Der. Sta. Mónica	11.00	1	1	3517	2.2	66.4	4.2	8.7	2.6	9.9	2.4	2.6	1.0	68.6	4.2	27.2	0.103	0.518	22.937674	-102.570022
T. Der. Sta. Mónica	11.00	1	2	3273	2.2	63.9	4.9	9.5	2.9	10.1	2.6	2.8	1.1	66.1	4.9	29.0	0.101	0.518	22.937723	-102.570067
T. Der. Sta. Mónica	11.00	3	1	2774	2.3	61.4	4.6	8.5	2.8	12.5	3.2	3.4	1.3	63.7	4.6	31.7	0.110	0.540	22.950917	-102.558695
T. Der. Sta. Mónica	11.00	3	2	2359	2.6	56.8	5.2	10.2	3.3	13.1	3.6	3.9	1.3	59.4	5.2	35.4	0.098	0.540	22.950907	-102.558690
T. Izq. Villa de Cos	53.90	1	1	3161	0.6	63.4	4.1	8.8	2.8	13.4	2.4	3.6	0.9	64.0	4.1	31.9	0.079	0.511	23.265187	-102.333229
T. Izq. Villa de Cos	53.90	1	2	3024	0.7	59.2	4.6	9.7	2.9	14.8	2.9	4.1	1.1	59.9	4.6	35.5	0.085	0.511	23.265175	-102.333217
T. Izq. Villa de Cos	53.90	3	1	2941	0.9	57.5	5.3	11.0	2.7	15.0	2.7	4.0	0.9	58.4	5.3	36.3	0.080	0.519	23.279466	-102.322981
T. Izq. Villa de Cos	53.90	3	2	2720	0.8	54.6	5.6	12.4	2.8	15.5	2.9	4.2	1.2	55.4	5.6	39.0	0.074	0.519	23.279453	-102.322971
Sierra Vieja	85.50	3	1	2306	0.4	52.2	6.1	9.5	3.0	18.5	3.6	5.4	1.3	52.6	6.1	41.3	0.096	0.520	23.527596	-102.095770
Sierra Vieja	85.50	3	2	2126	0.7	48.4	7.0	10.0	3.3	19.3	4.1	5.7	1.5	49.1	7.0	43.9	0.076	0.520	23.527765	-102.095729
T. Der. Majoma	144.50	3	1	1809	0.4	47.5	7.3	10.2	2.8	21.2	3.4	6.2	1.0	47.9	7.3	44.8	0.118	0.525	23.878301	-101.735364
T. Der. Majoma	144.50	3	2	1638	0.5	41.6	7.9	10.8	3.2	24.2	4.0	6.8	1.0	42.1	7.9	50.0	0.089	0.525	23.878530	-101.735420
T. Der. San Tiburcio	185.25	1	1	1934	3.4	52.2	6.1	9.7	2.9	16.2	2.8	5.6	1.1	55.6	6.1	38.3	0.139	0.509	24.154986	-101.497471
T. Der. San Tiburcio	185.25	1	2	2001	2.8	47.9	6.7	10.3	3.1	18.9	3.0	6.3	1.0	50.7	6.7	42.6	0.105	0.509	24.154981	-101.497459
T. Der. San Tiburcio	185.25	3	1	2427	3.2	55.4	5.9	11.4	2.3	13.7	2.2	4.9	1.0	58.6	5.9	35.5	0.131	0.501	24.162399	-101.492112
T. Der. San Tiburcio	185.25	3	2	2416	2.9	51.3	6.5	12.6	2.7	15.5	2.2	5.2	1.1	54.2	6.5	39.3	0.103	0.501	24.162391	-101.492104
T. Izq. Concepción del Oro	240.00	1	1	3248	2.9	59.3	5.0	12.8	1.7	12.2	1.9	3.6	0.6	62.2	5.0	32.8	0.117	0.501	24.611355	-101.368664
T. Izq. Concepción del Oro	240.00	1	2	3266	2.7	56.1	5.5	13.7	1.8	13.2	2.1	4.1	0.8	58.8	5.5	35.7	0.087	0.501	24.611348	-101.368669
T. Izq. Concepción del Oro	240.00	3	1	3325	0.4	63.5	4.0	9.9	2.0	13.7	2.0	3.7	0.8	63.9	4.0	32.1	0.071	0.519	24.625922	-101.381755
T. Izq. Concepción del Oro	240.00	3	2	3078	0.8	60.2	4.2	10.2	2.0	15.5	2.3	4.0	0.8	61.0	4.2	34.8	0.066	0.519	24.625914	-101.381752
Lim. Edos. Term. Zac. Ppia. Coah.	266.50																			
Agua Nueva	322.00	1	0	5652	0.5	58.1	5.1	13.1	2.5	13.6	2.4	3.8	0.9	58.6	5.1	36.3	0.079	0.510	25.181425	-101.094197

ZACATECAS

7 CARR: Ent. Morelos - Saltillo

CLAVE: 00149

RUTA: MEX-054

AÑO: 2016

LUGAR	ESTACION				CLASIFICACION VEHICULAR EN PORCIENTO										COORDENADAS					
	KM	TE	SC	TDPA	M	A	B	C2	C3	T3S2	T3S3	T3S2R4	OTROS	A	B	C	K'	D	LATITUD	LONGITUD
T. Der. La Trinidad	333.00	3	0	12539	0.5	75.0	2.8	12.5	1.5	5.4	1.1	0.3	0.9	75.5	2.8	21.7	0.104	0.502	25.290285	-101.084980
X. C. Libramiento de Saltillo	348.00	1	1	15701	1.3	82.3	1.7	9.5	1.4	2.3	1.0	0.3	0.2	83.6	1.7	14.7	0.098	0.504	25.368357	-101.015228
X. C. Libramiento de Saltillo	348.00	1	2	15964	1.9	80.2	2.0	10.3	1.5	2.5	1.1	0.3	0.2	82.1	2.0	15.9	0.073	0.504	25.368368	-101.015228
Saltillo	354.00	1	1	13511	1.4	89.8	0.9	6.6	0.4	0.6	0.2	0.0	0.1	91.2	0.9	7.9	0.078	0.508	25.387934	-101.006223
Saltillo	354.00	1	2	13103	1.2	89.7	1.0	6.8	0.4	0.6	0.2	0.0	0.1	90.9	1.0	8.1	0.079	0.508	25.387945	-101.006224

8 CARR: Ent. Rivier - San Marcos

CLAVE: 00285

RUTA: MEX-066

AÑO: 2016

LUGAR	ESTACION				CLASIFICACION VEHICULAR EN PORCIENTO										COORDENADAS					
	KM	TE	SC	TDPA	M	A	B	C2	C3	T3S2	T3S3	T3S2R4	OTROS	A	B	C	K'	D	LATITUD	LONGITUD
T. C. Aguascalientes - Zacatecas	0.00	3	1	8416	1.6	85.5	0.5	7.2	1.8	1.5	1.3	0.2	0.4	87.1	0.5	12.4	0.100	0.543	21.962238	-102.287166
T. C. Aguascalientes - Zacatecas	0.00	3	2	7073	1.6	84.9	0.5	7.4	1.9	1.7	1.4	0.2	0.4	86.5	0.5	13.0	0.092	0.543	21.962247	-102.287162
T. Izq. El Tepetate	10.50	3	0	9224	1.1	84.1	0.7	7.2	1.7	3.6	0.8	0.2	0.6	85.2	0.7	14.1	0.078	0.522	21.999623	-102.193199
T. Der. Jilotepec	23.60	3	0	7294	0.9	80.5	1.2	12.1	1.8	2.7	0.4	0.1	0.3	81.4	1.2	17.4	0.085	0.504	22.057297	-102.097553
Villa Juárez	30.00	3	0	9001	1.2	80.1	0.6	11.8	1.8	3.1	0.7	0.2	0.5	81.3	0.6	18.1	0.083	0.524	22.109131	-102.058215
Ciénega Grande	41.50	1	0	7767	1.6	77.6	1.0	13.9	1.9	3.2	0.4	0.1	0.3	79.2	1.0	19.8	0.074	0.508	22.186730	-102.020618
Ciénega Grande	41.50	3	0	6248	1.7	80.3	1.0	10.3	1.9	3.4	0.7	0.2	0.5	82.0	1.0	17.0	0.079	0.508	22.202392	-102.013899
Lim. Edos. Term. Ags. Ppia. Zac.	45.75																			
San Marcos	55.34	1	0	7328	2.1	79.7	0.8	10.1	1.9	3.9	0.7	0.2	0.6	81.8	0.8	17.4	0.073	0.509	22.274516	-101.961170

9 CARR: Ent. Tesislán - Ent. Malpaso

CLAVE: 00584

RUTA: MEX-023

AÑO: 2016

LUGAR	ESTACION				CLASIFICACION VEHICULAR EN PORCIENTO										COORDENADAS					
	KM	TE	SC	TDPA	M	A	B	C2	C3	T3S2	T3S3	T3S2R4	OTROS	A	B	C	K'	D	LATITUD	LONGITUD
T. C. Guadalajara - Tesislán	0.00	3	1	13027	2.6	82.1	0.3	7.7	0.8	5.2	0.7	0.2	0.4	84.7	0.3	15.0	0.105	0.514	20.788270	-103.461151
T. C. Guadalajara - Tesislán	0.00	3	2	12293	2.1	81.0	0.3	8.4	0.8	6.0	0.8	0.2	0.4	83.1	0.3	16.6	0.121	0.514	20.788286	-103.461172
Lim. Edos. Term. Jal. Ppia. Zac.	42.00																			
García de La Cadena	54.00	1	0	1647	1.0	83.2	1.9	9.3	2.1	1.2	1.0	0.1	0.2	84.2	1.9	13.9	0.090	0.507	21.193387	-103.464716
Tlaltenango de Sánchez Román	147.50	3	0	5331	3.3	82.8	1.0	7.8	1.4	2.5	0.8	0.1	0.3	86.1	1.0	12.9	0.078	0.501	21.803610	-103.298651
Momax	165.00	3	0	3147	2.4	82.0	2.2	8.6	1.4	2.1	0.8	0.1	0.4	84.4	2.2	13.4	0.088	0.504	21.936079	-103.307360
Lim. Edos. Term. Zac. Ppia. Jal.	171.80																			
Colotlán	175.00	1	0	3506	1.3	83.7	2.0	8.9	1.2	2.1	0.4	0.1	0.3	85.0	2.0	13.0	0.080	0.501	22.096067	-103.269384
Lim. Edos. Term. Jal. Ppia. Zac.	209.90																			
Lim. Edos. Term. Zac. Ppia. Jal.	214.80																			

ZACATECAS

9 CARR: Ent. Tesistán - Ent. Malpaso

CLAVE: 00584

RUTA: MEX-023

AÑO: 2016

LUGAR	ESTACION				CLASIFICACION VEHICULAR EN PORCIENTO										COORDENADAS					
	KM	TE	SC	TDPA	M	A	B	C2	C3	T3S2	T3S3	T3S2R4	OTROS	A	B	C	K'	D	LATITUD	LONGITUD
Lim. Edos. Term. Jal. Ppia. Zac.	223.95																			
Tepetongo	235.00	3	0	3101	1.3	81.4	1.7	10.5	1.4	2.6	0.8	0.1	0.2	82.7	1.7	15.6	0.089	0.500	22.466099	-103.142363
Jerez de García Salinas	249.00	1	1	2992	3.4	84.7	0.9	8.0	1.3	1.0	0.6	0.0	0.1	88.1	0.9	11.0	0.118	0.501	22.600498	-103.017571
Jerez de García Salinas	249.00	1	2	2979	3.1	84.1	1.1	8.3	1.3	1.1	0.8	0.0	0.2	87.2	1.1	11.7	0.109	0.501	22.600511	-103.017579
T. C. Guadalajara - Zacatecas	275.00	1	1	3174	0.4	88.3	1.5	6.7	1.3	1.0	0.6	0.1	0.1	88.7	1.5	9.8	0.138	0.526	22.616921	-102.784035
T. C. Guadalajara - Zacatecas	275.00	1	2	3151	0.5	86.5	1.8	7.8	1.5	1.1	0.6	0.1	0.1	87.0	1.8	11.2	0.113	0.526	22.617007	-102.783970

10 CARR: Fresnillo - Valparaíso

CLAVE: 32547

RUTA: MEX-044

AÑO: 2016

LUGAR	ESTACION				CLASIFICACION VEHICULAR EN PORCIENTO										COORDENADAS					
	KM	TE	SC	TDPA	M	A	B	C2	C3	T3S2	T3S3	T3S2R4	OTROS	A	B	C	K'	D	LATITUD	LONGITUD
Fresnillo	0.00	3	0	6322	2.6	79.6	0.7	9.2	2.6	3.6	1.0	0.2	0.5	82.2	0.7	17.1	0.096	0.511	23.173983	-102.918992
T. Izq. Guanajuato	24.50	1	0	2155	0.8	80.8	0.5	14.4	1.5	1.4	0.4	0.1	0.1	81.6	0.5	17.9	0.086	0.520	23.106586	-103.080154
T. Izq. Sombreretillo	45.00	3	0	1519	0.6	82.3	1.5	12.4	1.3	1.3	0.5	0.1	0.0	82.9	1.5	15.6	0.095	0.507	22.998769	-103.211778
T. Izq. San José de Llanetes	55.00	3	0	1388	0.5	83.0	1.2	11.7	1.6	1.3	0.5	0.1	0.1	83.5	1.2	15.3	0.099	0.504	22.924606	-103.295137
T. Izq. Lobatos	71.00	3	0	1946	0.7	81.8	1.2	11.6	1.6	1.7	0.9	0.3	0.2	82.5	1.2	16.3	0.095	0.503	22.832012	-103.422162
Valparaíso	90.00	1	0	2087	1.3	81.8	0.4	12.4	0.8	1.6	1.0	0.1	0.6	83.1	0.4	16.5	0.103	0.532	22.797574	-103.542235

11 CARR: Guadalajara - Zacatecas

CLAVE: 00150

RUTA: MEX-054

AÑO: 2016

LUGAR	ESTACION				CLASIFICACION VEHICULAR EN PORCIENTO										COORDENADAS					
	KM	TE	SC	TDPA	M	A	B	C2	C3	T3S2	T3S3	T3S2R4	OTROS	A	B	C	K'	D	LATITUD	LONGITUD
Guadalajara	0.00																			
X. Periférico de Guadalajara	6.19	3	1	16544	6.7	77.3	1.6	12.4	0.9	0.6	0.5	0.0	0.0	84.0	1.6	14.4	0.080	0.512	20.771407	-103.338774
X. Periférico de Guadalajara	6.19	3	2	17344	6.1	75.6	1.7	14.5	0.9	0.7	0.5	0.0	0.0	81.7	1.7	16.6	0.080	0.512	20.771312	-103.338802
T. Der. Ixtlahuacán del Río	49.46	3	0	4633	1.9	78.5	1.4	12.1	2.6	2.3	0.8	0.1	0.3	80.4	1.4	18.2	0.077	0.507	20.871112	-103.236827
Lim. Edos. Term. Jal. Ppia. Zac.	76.49																			
T. Izq. Moyahua	106.43	1	0	1929	1.3	76.2	3.7	9.4	5.4	2.9	0.9	0.0	0.2	77.5	3.7	18.8	0.087	0.509	21.251167	-103.161766
Apozol	129.28	1	0	4613	2.0	82.9	1.3	7.3	1.6	3.5	0.8	0.1	0.5	84.9	1.3	13.8	0.076	0.509	21.441732	-103.099189
Jalpa	159.39	1	0	3595	1.3	79.2	2.3	10.2	2.3	3.1	1.1	0.1	0.4	80.5	2.3	17.2	0.085	0.502	21.617794	-103.005548
Tabasco	189.40	1	0	2819	0.9	78.4	3.3	10.0	2.6	3.6	1.0	0.0	0.2	79.3	3.3	17.4	0.081	0.508	21.843519	-102.933702
Tabasco	189.40	3	0	3493	0.8	77.8	2.2	12.5	2.6	2.9	0.7	0.0	0.5	78.6	2.2	19.2	0.074	0.505	21.884806	-102.907583
Villanueva	255.70	3	0	4003	1.0	81.9	1.9	9.9	1.5	2.7	0.8	0.1	0.2	82.9	1.9	15.2	0.085	0.501	22.383111	-102.878278
T. Izq. Jerez de García Salinas	289.13	1	1	2237	0.6	83.9	2.4	8.5	1.8	1.8	0.8	0.0	0.2	84.5	2.4	13.1	0.112	0.546	22.606013	-102.761891

ZACATECAS

11 CARR: Guadalajara - Zacatecas

CLAVE: 00150

RUTA: MEX-054

AÑO: 2016

LUGAR	ESTACION				CLASIFICACION VEHICULAR EN PORCIENTO										COORDENADAS					
	KM	TE	SC	TDPA	M	A	B	C2	C3	T3S2	T3S3	T3S2R4	OTROS	A	B	C	K'	D	LATITUD	LONGITUD
T. Izq. Jerez de García Salinas	289.13	1	2	1856	0.5	81.6	2.7	10.0	2.1	2.1	0.8	0.0	0.2	82.1	2.7	15.2	0.096	0.546	22.605879	-102.761833
T. Izq. Jerez de García Salinas	289.13	3	1	5311	0.6	86.5	2.1	7.5	1.2	1.2	0.7	0.1	0.1	87.1	2.1	10.8	0.122	0.521	22.627341	-102.750023
T. Izq. Jerez de García Salinas	289.13	3	2	4891	0.6	85.3	2.1	8.4	1.3	1.4	0.7	0.1	0.1	85.9	2.1	12.0	0.085	0.521	22.627331	-102.750018
T. C. Zacatecas - Durango	311.83	1	1	9322	0.7	88.5	0.9	6.9	1.1	0.9	0.7	0.1	0.2	89.2	0.9	9.9	0.083	0.539	22.771374	-102.631474
T. C. Zacatecas - Durango	311.83	1	2	10882	0.6	87.3	1.1	7.7	1.3	1.0	0.7	0.1	0.2	87.9	1.1	11.0	0.085	0.539	22.771391	-102.631475

12 CARR: Jerez - Fresnillo

CLAVE: 32542

RUTA: MEX-023

AÑO: 2016

LUGAR	ESTACION				CLASIFICACION VEHICULAR EN PORCIENTO										COORDENADAS					
	KM	TE	SC	TDPA	M	A	B	C2	C3	T3S2	T3S3	T3S2R4	OTROS	A	B	C	K'	D	LATITUD	LONGITUD
Jerez	0.00	3	0	2369	1.9	88.3	1.5	4.8	1.3	1.5	0.6	0.0	0.1	90.2	1.5	8.3	0.081	0.506	22.684455	-103.015290
T. C. Ent. Fresnillo - Valparaiso	60.00	1	0	3303	3.5	79.8	0.7	8.9	3.7	2.2	0.9	0.2	0.1	83.3	0.7	16.0	0.101	0.514	23.157444	-102.882250

13 CARR: Libramiento de Guadalupe - Zacatecas

CLAVE: 32582

RUTA: MEX-045

AÑO: 2016

LUGAR	ESTACION				CLASIFICACION VEHICULAR EN PORCIENTO										COORDENADAS					
	KM	TE	SC	TDPA	M	A	B	C2	C3	T3S2	T3S3	T3S2R4	OTROS	A	B	C	K'	D	LATITUD	LONGITUD
T. C. Aguascalientes - Zacatecas (Baja)	0.00	3	1	4900	3.3	86.4	0.3	7.2	0.8	0.9	0.8	0.1	0.2	89.7	0.3	10.0	0.079	0.542	22.741461	-102.502793
T. C. Aguascalientes - Zacatecas (Alta)	0.00	3	1	10498	0.9	78.5	2.9	5.8	2.5	5.2	1.7	1.8	0.7	79.4	2.9	17.7	0.082	0.544	22.741398	-102.502561
T. C. Aguascalientes - Zacatecas (Alta)	0.00	3	2	9064	0.9	76.6	3.0	6.8	2.8	5.3	1.8	1.9	0.9	77.5	3.0	19.5	0.085	0.544	22.741535	-102.502583
T. C. Aguascalientes - Zacatecas (Baja)	0.00	3	2	5809	2.5	86.2	0.3	8.0	0.9	1.0	0.8	0.1	0.2	88.7	0.3	11.0	0.091	0.542	22.741337	-102.502771
X. C. Cieneguillas - Zacatecas	13.00	3	1	6243	0.8	76.5	2.9	6.0	2.8	5.5	2.3	2.2	1.0	77.3	2.9	19.8	0.095	0.526	22.761583	-102.603451
X. C. Cieneguillas - Zacatecas	13.00	3	2	6917	0.8	74.7	3.2	6.5	3.0	6.0	2.5	2.2	1.1	75.5	3.2	21.3	0.109	0.526	22.761596	-102.603503
T. C. Zacatecas - Durango	17.50	1	1	11759	0.8	80.4	2.7	6.6	2.6	3.9	1.1	1.7	0.2	81.2	2.7	16.1	0.116	0.543	22.773171	-102.618408
T. C. Zacatecas - Durango	17.50	1	2	9881	0.5	78.4	3.1	7.4	3.0	4.4	1.2	1.8	0.2	78.9	3.1	18.0	0.102	0.543	22.773178	-102.618400

14 CARR: Providencia - Luis Moya

CLAVE: 00112

RUTA: MEX-071

AÑO: 2016

LUGAR	ESTACION				CLASIFICACION VEHICULAR EN PORCIENTO										COORDENADAS					
	KM	TE	SC	TDPA	M	A	B	C2	C3	T3S2	T3S3	T3S2R4	OTROS	A	B	C	K'	D	LATITUD	LONGITUD
T. C. Aguascalientes - Zacatecas	0.00	3	0	5276	1.5	75.2	0.9	10.4	2.7	3.5	2.6	2.7	0.5	76.7	0.9	22.4	0.076	0.502	22.060724	-102.273542
T. Izq. Pabellón de Arteaga	12.10	1	0	5023	1.7	78.0	1.0	7.4	1.5	3.1	3.4	3.1	0.8	79.7	1.0	19.3	0.081	0.509	22.144455	-102.251647
T. Der. Villa Juárez	14.90	3	0	5586	1.8	77.4	0.5	9.5	1.7	3.2	2.6	2.9	0.4	79.2	0.5	20.3	0.084	0.510	22.176944	-102.245306
X. C. Rincón de Romos - Ciénega Grande	21.22	3	0	4888	3.1	76.6	2.4	9.8	2.0	3.1	1.3	1.1	0.6	79.7	2.4	17.9	0.073	0.502	22.230917	-102.241306

ZACATECAS

14 CARR: Providencia - Luis Moya

CLAVE: 00112

RUTA: MEX-071

AÑO: 2016

LUGAR	ESTACION				CLASIFICACION VEHICULAR EN PORCIENTO														COORDENADAS	
	KM	TE	SC	TDPA	M	A	B	C2	C3	T3S2	T3S3	T3S2R4	OTROS	A	B	C	K'	D	LATITUD	LONGITUD
X. C. La Punta - Mesillas	30.35	3	0	3061	2.8	77.6	1.1	11.8	2.0	2.3	1.1	1.1	0.2	80.4	1.1	18.5	0.089	0.511	22.318135	-102.233631
San Jacinto	34.25	3	0	2371	5.0	74.4	0.7	11.1	1.7	3.7	1.6	1.3	0.5	79.4	0.7	19.9	0.083	0.506	22.353278	-102.232500
Lim. Edos. Term. Ags. Ppia. Zac.	37.50																			
Luis Moya	43.52	1	0	3530	2.2	75.3	1.3	13.2	2.1	3.2	1.3	1.0	0.4	77.5	1.3	21.2	0.089	0.502	22.425466	-102.246478

15 CARR: Ramal a Aeropuerto Zacatecas

CLAVE: 32546

RUTA: MEX-045

AÑO: 2016

LUGAR	ESTACION				CLASIFICACION VEHICULAR EN PORCIENTO														COORDENADAS	
	KM	TE	SC	TDPA	M	A	B	C2	C3	T3S2	T3S3	T3S2R4	OTROS	A	B	C	K'	D	LATITUD	LONGITUD
T. C. Zacatecas - Durango	0.00	3	1	1648	1.8	83.9	2.3	9.7	1.4	0.7	0.1	0.1	0.0	85.7	2.3	12.0	0.138	0.502	22.910535	-102.673670
T. C. Zacatecas - Durango	0.00	3	2	1664	1.7	83.1	2.5	10.2	1.4	0.9	0.1	0.1	0.0	84.8	2.5	12.7	0.152	0.502	22.910454	-102.673573
Aeropuerto	1.95																			

16 CARR: Ramal a Concepción del Oro

CLAVE: 32565

RUTA: MEX-054

AÑO: 2016

LUGAR	ESTACION				CLASIFICACION VEHICULAR EN PORCIENTO														COORDENADAS	
	KM	TE	SC	TDPA	M	A	B	C2	C3	T3S2	T3S3	T3S2R4	OTROS	A	B	C	K'	D	LATITUD	LONGITUD
T. C. Ent. Morelos - Saltillo	0.00	3	0	5578	1.0	85.0	0.5	8.9	0.1	3.5	0.4	0.1	0.5	86.0	0.5	13.5	0.079	0.511	24.620292	-101.405100
Concepción del Oro	3.20																			

17 CARR: Ramal a Francisco Murguía (Nieves)

CLAVE: 32541

RUTA: MEX-049

AÑO: 2016

LUGAR	ESTACION				CLASIFICACION VEHICULAR EN PORCIENTO														COORDENADAS	
	KM	TE	SC	TDPA	M	A	B	C2	C3	T3S2	T3S3	T3S2R4	OTROS	A	B	C	K'	D	LATITUD	LONGITUD
T. C. Ent. La Chicharrona - Cuencamé	0.00	3	0	1539	0.1	80.7	0.4	15.8	1.4	0.9	0.6	0.0	0.1	80.8	0.4	18.8	0.119	0.502	23.925361	-103.155505
Francisco Murguía (Nieves)	17.40																			

18 CARR: Ramal a Gral. Pánfilo Natera

CLAVE: 32559

RUTA: MEX-049

AÑO: 2016

LUGAR	ESTACION				CLASIFICACION VEHICULAR EN PORCIENTO														COORDENADAS	
	KM	TE	SC	TDPA	M	A	B	C2	C3	T3S2	T3S3	T3S2R4	OTROS	A	B	C	K'	D	LATITUD	LONGITUD
T. C. San Luis Potosí - Ent. Arcinas	0.00	3	1	2370	4.6	82.2	0.6	10.9	0.8	0.5	0.3	0.0	0.1	86.8	0.6	12.6	0.105	0.518	22.676702	-102.107198
T. C. San Luis Potosí - Ent. Arcinas	0.00	3	2	2201	5.4	79.7	0.7	12.4	0.9	0.5	0.3	0.0	0.1	85.1	0.7	14.2	0.110	0.518	22.676653	-102.107140
Gral. Pánfilo Natera	1.50																			

ZACATECAS

19 CARR: Ramal a Ruinas de Chicomostoc

CLAVE: 00544

RUTA: MEX-045

AÑO: 2016

LUGAR	ESTACION				CLASIFICACION VEHICULAR EN PORCIENTO													COORDENADAS			
	KM	TE	SC	TDPA	M	A	B	C2	C3	T3S2	T3S3	T3S2R4	OTROS	A	B	C	K'	D	LATITUD	LONGITUD	
T. C. Guadalajara - Zacatecas	0.00	3	0	91	5.5	89.0	0.6	4.5	0.4	0.0	0.0	0.0	0.0	94.5	0.6	4.9	0.154	0.510	22.459777	-102.832653	
Ruinas de Chicomostoc	2.20																				

20 CARR: Ramal a San Martín

CLAVE: 00544

RUTA: MEX-045

AÑO: 2016

LUGAR	ESTACION				CLASIFICACION VEHICULAR EN PORCIENTO													COORDENADAS			
	KM	TE	SC	TDPA	M	A	B	C2	C3	T3S2	T3S3	T3S2R4	OTROS	A	B	C	K'	D	LATITUD	LONGITUD	
T. C. Zacatecas - Durango	0.00	3	0	1345	1.2	83.4	0.2	10.8	1.8	1.4	0.7	0.3	0.2	84.6	0.2	15.2	0.094	0.502	23.693757	-103.716238	
San Martín	4.00																				

21 CARR: Ramal a Villa de Cos

CLAVE: 32564

RUTA: MEX-054

AÑO: 2016

LUGAR	ESTACION				CLASIFICACION VEHICULAR EN PORCIENTO													COORDENADAS		
	KM	TE	SC	TDPA	M	A	B	C2	C3	T3S2	T3S3	T3S2R4	OTROS	A	B	C	K'	D	LATITUD	LONGITUD
T. C. Ent. Morelos - Saltillo	0.00	3	1	1867	2.3	83.0	0.7	11.9	0.8	0.7	0.4	0.0	0.2	85.3	0.7	14.0	0.125	0.521	23.272838	-102.332392
T. C. Ent. Morelos - Saltillo	0.00	3	2	1719	2.0	81.5	0.7	13.4	1.0	0.8	0.4	0.0	0.2	83.5	0.7	15.8	0.143	0.521	23.272836	-102.332398
Villa de Cos	3.30	1	1	2864	4.6	84.1	0.3	9.6	0.3	0.7	0.3	0.0	0.1	88.7	0.3	11.0	0.111	0.507	23.288804	-102.343138
Villa de Cos	3.30	1	2	2944	5.0	82.3	0.3	11.0	0.3	0.7	0.3	0.0	0.1	87.3	0.3	12.4	0.129	0.507	23.288807	-102.343120

22 CARR: San Luis Potosí - Ent. Arcinas

CLAVE: 00134

RUTA: MEX-049

AÑO: 2016

LUGAR	ESTACION				CLASIFICACION VEHICULAR EN PORCIENTO													COORDENADAS			
	KM	TE	SC	TDPA	M	A	B	C2	C3	T3S2	T3S3	T3S2R4	OTROS	A	B	C	K'	D	LATITUD	LONGITUD	
T. C. San Luis Potosí - Matehuala	0.00																				
T. Izq. Periférico de San Luis Potosí	9.35	3	1	11188	6.1	80.2	1.0	8.0	1.3	1.6	0.8	0.8	0.2	86.3	1.0	12.7	0.111	0.503	22.203638	-101.027071	
T. Izq. Periférico de San Luis Potosí	9.35	3	2	11345	5.7	78.9	1.1	9.0	1.5	1.7	0.9	1.0	0.2	84.6	1.1	14.3	0.087	0.503	22.203713	-101.026973	
Mexquitic	22.50	1	1	6208	3.9	69.7	2.8	9.5	2.4	6.3	2.0	2.7	0.7	73.6	2.8	23.6	0.125	0.503	22.249403	-101.105722	
Mexquitic	22.50	1	2	6271	4.1	66.2	3.1	10.6	2.8	7.1	2.4	2.9	0.8	70.3	3.1	26.6	0.121	0.503	22.249524	-101.105651	
T. Der. Charcas	30.90	1	1	6211	1.8	67.4	3.5	9.1	3.1	8.2	2.4	3.8	0.7	69.2	3.5	27.3	0.097	0.503	22.309579	-101.157868	
T. Der. Charcas	30.90	1	2	6147	1.8	64.5	3.9	9.8	3.4	9.0	2.7	4.1	0.8	66.3	3.9	29.8	0.094	0.503	22.309636	-101.157812	
Lim. Edos. Term. S. L. P. Ppia. Zac.	55.13																				
Lim. Edos. Term. Zac. Ppia. S. L. P.	89.30																				
T. Der. Salinas	99.00	1	1	3572	1.8	54.5	5.9	9.9	4.2	12.9	3.8	6.4	0.6	56.3	5.9	37.8	0.077	0.502	22.602587	-101.705023	
T. Der. Salinas	99.00	1	2	3548	1.6	50.5	6.1	10.5	4.4	15.3	4.1	6.9	0.6	52.1	6.1	41.8	0.094	0.502	22.602462	-101.705102	

ZACATECAS

22 CARR : San Luis Potosí - Ent. Arcinas

CLAVE: 00134

RUTA: MEX-049

AÑO : 2016

LUGAR	ESTACION				CLASIFICACION VEHICULAR EN PORCIENTO													COORDENADAS		
	KM	TE	SC	TDPA	M	A	B	C2	C3	T3S2	T3S3	T3S2R4	OTROS	A	B	C	K'	D	LATITUD	LONGITUD
T. Der. Salinas	99.00	3	1	4012	2.0	57.6	5.7	9.9	3.9	11.6	3.2	5.5	0.6	59.6	5.7	34.7	0.082	0.500	22.619789	-101.743662
T. Der. Salinas	99.00	3	2	4015	2.6	52.1	5.8	10.6	4.5	13.6	3.6	6.6	0.6	54.7	5.8	39.5	0.074	0.500	22.620004	-101.743633
Lim. Edos. Term. S. L. P. Ppia. Zac.	122.47																			
T. Izq. Pánfilo Natera	139.00	1	1	3548	0.8	58.2	5.1	8.4	3.8	13.3	3.7	5.9	0.8	59.0	5.1	35.9	0.072	0.503	22.678964	-102.097733
T. Izq. Pánfilo Natera	139.00	1	2	3505	0.6	55.2	5.6	8.6	4.2	14.6	4.0	6.4	0.8	55.8	5.6	38.6	0.078	0.503	22.678806	-102.097806
Ent. Arcinas	162.98	1	1	4003	0.5	62.3	5.1	8.3	3.3	11.4	3.3	4.9	0.9	62.8	5.1	32.1	0.085	0.521	22.719528	-102.322639
Ent. Arcinas	162.98	1	2	3673	0.5	58.6	5.1	8.7	3.6	13.5	3.9	5.5	0.6	59.1	5.1	35.8	0.085	0.521	22.719292	-102.322734

23 CARR : San Luis Potosí - Lagos de Moreno

CLAVE: 00133

RUTA: MEX-070-080

AÑO : 2016

LUGAR	ESTACION				CLASIFICACION VEHICULAR EN PORCIENTO													COORDENADAS		
	KM	TE	SC	TDPA	M	A	B	C2	C3	T3S2	T3S3	T3S2R4	OTROS	A	B	C	K'	D	LATITUD	LONGITUD
San Luis Potosí	0.00	3	1	15503	0.6	93.0	0.6	4.3	0.4	0.4	0.4	0.1	0.2	93.6	0.6	5.8	0.103	0.541	22.133996	-101.030774
San Luis Potosí	0.00	3	2	18271	0.6	92.4	0.7	4.8	0.4	0.4	0.4	0.1	0.2	93.0	0.7	6.3	0.070	0.541	22.133989	-101.030774
X. Periférico de San Luis Potosí	8.41	3	0	11342	1.9	79.4	1.5	7.3	2.4	5.3	1.2	0.5	0.5	81.3	1.5	17.2	0.087	0.506	22.130436	-101.036313
El Tepetate	41.90	1	0	5039	1.6	73.3	2.9	9.9	2.9	5.9	2.1	0.9	0.5	74.9	2.9	22.2	0.092	0.529	22.022646	-101.228576
El Tepetate	41.90	3	0	4591	1.5	66.1	3.5	10.0	4.3	8.4	4.0	1.2	1.0	67.6	3.5	28.9	0.067	0.501	22.007066	-101.250176
Villa de Arriaga	61.90	3	0	3567	1.3	61.4	3.3	9.1	4.1	10.7	5.0	3.1	2.0	62.7	3.3	34.0	0.069	0.508	21.896111	-101.414694
Lim. Edos. Term. S. L. P. Ppia. Zac.	70.23																			
Lim. Edos. Term. Zac. Ppia. Jal.	82.94																			
Ojuelos de Jalisco	83.20	1	0	6219	1.5	70.5	2.0	6.5	3.8	7.8	4.1	3.0	0.8	72.0	2.0	26.0	0.067	0.502	21.875967	-101.569398
Ojuelos de Jalisco	83.20	3	0	4997	3.0	56.0	3.8	7.8	3.6	13.4	4.9	6.4	1.1	59.0	3.8	37.2	0.059	0.506	21.852205	-101.594163
X. C. Lagos de Moreno - San Luis Potosí (Cuota)	140.00	1	0	3594	2.3	60.2	2.7	13.2	4.4	9.3	4.3	3.1	0.5	62.5	2.7	34.8	0.067	0.505	21.449500	-101.804583
X. C. León - Aguascalientes	146.90	1	1	4454	2.9	61.3	2.5	8.5	4.1	11.2	3.3	5.3	0.9	64.2	2.5	33.3	0.068	0.502	21.375653	-101.894403
X. C. León - Aguascalientes	146.90	1	2	4496	4.3	54.1	2.5	10.1	4.7	13.5	3.7	6.0	1.1	58.4	2.5	39.1	0.067	0.502	21.375583	-101.894361
Lagos de Moreno	150.00																			

24 CARR : Zacatecas - Durango

CLAVE: 00544

RUTA: MEX-045

AÑO : 2016

LUGAR	ESTACION				CLASIFICACION VEHICULAR EN PORCIENTO													COORDENADAS		
	KM	TE	SC	TDPA	M	A	B	C2	C3	T3S2	T3S3	T3S2R4	OTROS	A	B	C	K'	D	LATITUD	LONGITUD
Zacatecas	0.00																			
T. Izq. Guadalajara	6.40	3	1	12621	0.6	81.9	2.1	6.0	1.9	3.8	1.7	1.2	0.8	82.5	2.1	15.4	0.082	0.500	22.783593	-102.626936
T. Izq. Guadalajara	6.40	3	2	12639	0.6	80.2	2.4	6.5	2.0	4.2	1.9	1.3	0.9	80.8	2.4	16.8	0.089	0.500	22.783607	-102.627018

ZACATECAS

24 CARR: Zacatecas - Durango

CLAVE: 00544

RUTA: MEX-045

AÑO: 2016

LUGAR	ESTACION				CLASIFICACION VEHICULAR EN PORCIENTO													COORDENADAS		
	KM	TE	SC	TDPA	M	A	B	C2	C3	T3S2	T3S3	T3S2R4	OTROS	A	B	C	K'	D	LATITUD	LONGITUD
T. Der. Saltillo (T. Morelos)	15.00	3	1	11313	1.1	74.5	3.4	6.9	2.0	6.0	2.3	2.9	0.9	75.6	3.4	21.0	0.081	0.508	22.872900	-102.634845
T. Der. Saltillo (T. Morelos)	15.00	3	2	11694	0.8	73.2	3.4	7.7	2.2	6.2	2.4	3.1	1.0	74.0	3.4	22.6	0.085	0.508	22.865722	-102.650000
Víctor Rosales	28.00	1	1	11217	1.5	74.2	3.1	7.3	2.3	6.0	2.2	3.0	0.4	75.7	3.1	21.2	0.083	0.510	22.930006	-102.685455
Víctor Rosales	28.00	1	2	11666	1.3	72.8	3.5	7.4	2.5	6.7	2.4	3.0	0.4	74.1	3.5	22.4	0.083	0.510	22.929886	-102.685718
T. Der. Facultad de Veterinaria	32.30	1	1	7212	0.9	68.3	5.0	9.9	2.4	7.6	2.4	2.6	0.9	69.2	5.0	25.8	0.086	0.502	22.970766	-102.719259
T. Der. Facultad de Veterinaria	32.30	1	2	7146	1.5	64.0	5.6	11.0	2.6	8.8	2.8	2.7	1.0	65.5	5.6	28.9	0.092	0.502	22.970762	-102.719115
Gral. Enrique Estrada	34.60	3	1	8892	0.8	79.2	3.0	6.5	1.7	4.9	1.9	1.6	0.4	80.0	3.0	17.0	0.082	0.505	23.012521	-102.751882
Gral. Enrique Estrada	34.60	3	2	9066	0.5	84.1	2.5	5.1	1.0	3.9	1.5	1.1	0.3	84.6	2.5	12.9	0.082	0.505	23.012324	-102.752088
Fresnillo	58.50	1	1	7331	1.2	81.4	2.8	7.8	2.1	2.5	1.2	0.5	0.5	82.6	2.8	14.6	0.099	0.501	23.159358	-102.851867
Fresnillo	58.50	1	2	7292	1.4	78.7	3.1	9.3	2.2	2.9	1.4	0.5	0.5	80.1	3.1	16.8	0.090	0.501	23.159390	-102.851772
Ent. La Chicharrona	74.30	1	1	7832	0.6	66.6	4.2	8.7	3.1	9.8	3.2	3.3	0.5	67.2	4.2	28.6	0.073	0.515	23.291807	-102.953735
Ent. La Chicharrona	74.30	1	2	7376	0.6	63.9	4.5	10.0	3.2	10.2	3.5	3.6	0.5	64.5	4.5	31.0	0.079	0.515	23.291575	-102.953917
Ent. La Chicharrona	74.30	3	0	6642	0.6	69.3	4.3	13.9	2.6	4.8	2.6	1.4	0.5	69.9	4.3	25.8	0.071	0.500	23.307414	-102.964414
T. Der. Saín Alto	121.00	3	0	4111	0.6	70.9	4.6	11.9	2.6	5.4	2.0	1.2	0.8	71.5	4.6	23.9	0.080	0.514	23.581671	-103.274319
T. Izq. Sombrerete (2º Acceso)	161.50	3	0	5886	1.7	72.1	3.3	12.3	1.8	5.2	1.8	1.1	0.7	73.8	3.3	22.9	0.078	0.501	23.647325	-103.651690
Lim. Edos. Term. Zac. Ppia. Dgo.	190.08																			
X. C. Súchil - Villa Unión	206.98	1	0	3213	1.0	64.0	6.7	12.3	2.4	6.8	3.5	2.6	0.7	65.0	6.7	28.3	0.077	0.505	23.749931	-103.963812
X. C. Súchil - Villa Unión	206.98	3	0	5649	1.9	71.9	4.1	10.8	1.7	5.1	2.4	1.4	0.7	73.8	4.1	22.1	0.072	0.506	23.744151	-104.000752
T. Izq. Graceros	210.00	1	0	5130	0.9	73.6	4.4	10.6	1.5	4.6	2.4	1.4	0.6	74.5	4.4	21.1	0.074	0.505	23.747033	-104.021605
Amado Nervo	231.51	1	0	4277	1.0	70.9	5.9	10.6	1.8	5.0	2.4	1.8	0.6	71.9	5.9	22.2	0.076	0.505	23.839333	-104.180545
Amado Nervo	231.51	3	0	5843	0.9	72.9	5.7	10.0	1.8	4.4	2.3	1.5	0.5	73.8	5.7	20.5	0.075	0.501	23.844225	-104.194748
Nombre de Dios	236.80	1	0	4894	1.5	76.6	3.6	8.2	1.6	4.9	2.0	1.2	0.4	78.1	3.6	18.3	0.079	0.527	23.843803	-104.223426
Nombre de Dios	236.80	3	0	5369	1.1	75.2	3.1	9.4	1.3	4.6	3.3	1.4	0.6	76.3	3.1	20.6	0.075	0.501	23.855312	-104.252979
T. Der. Constanacia	240.60	3	0	5513	0.5	74.0	4.2	10.7	1.7	4.9	2.1	1.5	0.4	74.5	4.2	21.3	0.082	0.503	23.871673	-104.266986
T. Der. Tuitán	250.80	3	0	4792	0.4	76.7	3.6	8.8	1.7	4.6	2.1	1.3	0.8	77.1	3.6	19.3	0.089	0.514	23.922980	-104.337253
T. Der. Independencia y Libertad	261.70	1	0	5826	0.4	76.6	3.7	8.8	1.6	4.6	2.2	1.4	0.7	77.0	3.7	19.3	0.087	0.507	23.993880	-104.374263
T. Der. Independencia y Libertad	261.70	3	1	3062	0.5	76.9	3.7	11.3	1.3	3.0	1.7	1.2	0.4	77.4	3.7	18.9	0.137	0.500	24.012333	-104.398489
T. Der. Independencia y Libertad	261.70	3	2	3063	0.5	74.8	3.9	12.5	1.4	3.3	2.0	1.2	0.4	75.3	3.9	20.8	0.102	0.500	24.012343	-104.398491
T. Izq. Parras de La Fuente	276.60	1	1	4154	1.0	76.4	3.8	11.9	1.3	2.8	1.5	1.0	0.3	77.4	3.8	18.8	0.104	0.502	24.019178	-104.508440
T. Izq. Parras de La Fuente	276.60	1	2	4124	0.8	73.9	4.3	13.6	1.3	3.1	1.7	1.0	0.3	74.7	4.3	21.0	0.087	0.502	24.019175	-104.508442
T. Izq. Parras de La Fuente	276.60	3	1	3925	0.9	83.5	2.2	9.0	1.4	1.8	0.6	0.4	0.2	84.4	2.2	13.4	0.094	0.505	24.021187	-104.526727
T. Izq. Parras de La Fuente	276.60	3	2	3856	1.5	81.8	2.6	9.3	1.4	2.1	0.7	0.4	0.2	83.3	2.6	14.1	0.089	0.505	24.021191	-104.526723
Durango	287.30	1	1	4976	2.2	83.6	1.5	9.5	0.9	1.4	0.5	0.2	0.2	85.8	1.5	12.7	0.106	0.505	24.026266	-104.574033
Durango	287.30	1	2	4884	2.3	82.2	1.7	10.2	1.1	1.6	0.5	0.2	0.2	84.5	1.7	13.8	0.101	0.505	24.026266	-104.574033

ZACATECAS

25 CARR: Cuauhtémoc - Osiris (Cuota)

CLAVE: 32558

RUTA: MEX-045D

AÑO: 2016

LUGAR	ESTACION				CLASIFICACION VEHICULAR EN PORCIENTO													COORDENADAS		
	KM	TE	SC	TDPA	M	A	B	C2	C3	T3S2	T3S3	T3S2R4	OTROS	A	B	C	K'	D	LATITUD	LONGITUD
T. C. Cosío - Guadalupe	0.00	3	0	7486	0.6	56.0	8.0	7.3	3.2	13.5	3.7	6.7	1.0	56.6	8.0	35.4	0.081	0.501	22.491556	-102.360611
Caseta de Cobro Zacatecas	27.70	2	0	8384	0.3	55.8	6.7	4.7	4.9	15.4	3.3	7.8	1.1	56.1	6.7	37.2	0.067	0.500	22.703547	-102.449280
T. C. Aguascalientes - Zacatecas	32.00	1	0	7757	0.8	57.2	7.4	6.9	3.7	13.1	3.3	6.6	1.0	58.0	7.4	34.6	0.085	0.502	22.746259	-102.453732

26 CARR: Libramiento de Fresnillo (Cuota)

CLAVE: 32581

RUTA: MEX-045D

AÑO: 2016

LUGAR	ESTACION				CLASIFICACION VEHICULAR EN PORCIENTO													COORDENADAS		
	KM	TE	SC	TDPA	M	A	B	C2	C3	T3S2	T3S3	T3S2R4	OTROS	A	B	C	K'	D	LATITUD	LONGITUD
T. C. Zacatecas - Durango	49.80	3	1	3010	1.7	56.7	5.9	8.4	2.6	14.8	3.1	5.8	1.0	58.4	5.9	35.7	0.087	0.513	23.122222	-102.807889
T. C. Zacatecas - Durango	49.80	3	2	3176	0.8	53.6	6.5	9.2	2.9	15.9	3.7	6.4	1.0	54.4	6.5	39.1	0.098	0.513	23.122517	-102.808280
Caseta de Cobro Morfin Chávez	57.05	2	1	3089	0.3	55.7	3.8	4.4	4.2	18.5	3.6	8.0	1.5	56.0	3.8	40.2	0.088	0.500	23.177938	-102.828514
Caseta de Cobro Morfin Chávez	57.05	2	2	3089	0.3	55.7	3.8	4.4	4.2	18.5	3.6	8.0	1.5	56.0	3.8	40.2	0.088	0.500	23.177938	-102.828514
T. Der. Plateros	61.70	1	1	3046	1.9	52.0	6.0	11.6	2.8	15.3	3.2	6.3	0.9	53.9	6.0	40.1	0.104	0.513	23.194048	-102.835074
T. Der. Plateros	61.70	1	2	2890	0.6	47.7	6.7	12.7	3.0	17.3	3.9	7.1	1.0	48.3	6.7	45.0	0.114	0.513	23.194041	-102.835105
T. Der. Plateros	61.70	3	1	2637	1.5	53.2	5.7	9.4	2.8	16.9	3.7	5.9	0.9	54.7	5.7	39.6	0.106	0.509	23.211181	-102.855513
T. Der. Plateros	61.70	3	2	2548	0.6	48.3	6.2	10.3	3.2	19.6	4.1	6.6	1.1	48.9	6.2	44.9	0.128	0.509	23.210957	-102.855689
T. C. Zacatecas - Durango	69.85	1	1	2732	0.4	57.2	4.5	6.3	3.1	16.9	4.0	6.3	1.3	57.6	4.5	37.9	0.087	0.514	23.237883	-102.913095
T. C. Zacatecas - Durango	69.85	1	2	2885	0.4	53.4	5.2	7.5	3.4	17.3	4.6	6.8	1.4	53.8	5.2	41.0	0.107	0.514	23.237898	-102.913086

27 CARR: Libramiento de Víctor Rosales (Cuota)

CLAVE: 32015

RUTA: MEX-045D

AÑO: 2016

LUGAR	ESTACION				CLASIFICACION VEHICULAR EN PORCIENTO													COORDENADAS		
	KM	TE	SC	TDPA	M	A	B	C2	C3	T3S2	T3S3	T3S2R4	OTROS	A	B	C	K'	D	LATITUD	LONGITUD
T. C. Zacatecas - Durango	0.00	3	1	6422	1.1	66.7	5.1	7.0	2.8	9.7	2.6	3.8	1.2	67.8	5.1	27.1	0.077	0.520	22.936724	-102.688908
T. C. Zacatecas - Durango	0.00	3	2	6967	1.1	62.5	6.0	7.8	3.2	10.5	3.0	4.6	1.3	63.6	6.0	30.4	0.093	0.520	22.936592	-102.688751
Caseta de Cobro Calera Víctor Rosales	0.50	2	1	7684	0.2	70.4	4.4	3.3	3.7	9.9	2.4	4.9	0.8	70.6	4.4	25.0	0.085	0.500	22.941820	-102.689934
Caseta de Cobro Calera Víctor Rosales	0.50	2	2	7684	0.2	70.4	4.4	3.3	3.7	9.9	2.4	4.9	0.8	70.6	4.4	25.0	0.085	0.500	22.941820	-102.689934
T. C. Calera de Víctor Rosales - Santiagoullo	2.50	3	1	7185	1.0	67.6	4.6	7.8	2.6	8.5	2.9	3.8	1.2	68.6	4.6	26.8	0.081	0.501	22.956259	-102.692755
T. C. Calera de Víctor Rosales - Santiagoullo	2.50	3	2	7170	0.9	65.9	5.3	7.9	2.9	8.7	3.2	3.9	1.3	66.8	5.3	27.9	0.094	0.501	22.956033	-102.692932
T. C. Zacatecas - Durango	12.20	1	1	7305	0.9	69.7	4.8	6.9	3.0	8.3	2.6	2.8	1.0	70.6	4.8	24.6	0.082	0.508	23.005833	-102.744694
T. C. Zacatecas - Durango	12.20	1	2	7063	1.3	66.9	5.1	7.3	3.2	9.3	2.9	3.0	1.0	68.2	5.1	26.7	0.082	0.508	23.005833	-102.744694

ZACATECAS

28 CARR: Calera de Víctor Rosales - Santiaguillo

CLAVE: 32016

RUTA: ZAC-016

AÑO: 2016

LUGAR	ESTACION				CLASIFICACION VEHICULAR EN PORCIENTO														COORDENADAS	
	KM	TE	SC	TDPA	M	A	B	C2	C3	T3S2	T3S3	T3S2R4	OTROS	A	B	C	K'	D	LATITUD	LONGITUD
Calera de Víctor Rosales	0.00	3	0	2884	7.1	70.5	1.7	14.7	2.4	2.2	0.9	0.1	0.4	77.6	1.7	20.7	0.088	0.515	22.958789	-102.683787
T. C. Fresnillo - Ent. Bañón	23.60																			

29 CARR: Cieneguillas - Zacatecas

CLAVE: 32579

RUTA: ZAC

AÑO: 2016

LUGAR	ESTACION				CLASIFICACION VEHICULAR EN PORCIENTO														COORDENADAS	
	KM	TE	SC	TDPA	M	A	B	C2	C3	T3S2	T3S3	T3S2R4	OTROS	A	B	C	K'	D	LATITUD	LONGITUD
T. C. Guadalajara - Zacatecas	0.00	3	0	2758	1.6	79.5	0.1	14.9	1.3	1.7	0.5	0.1	0.3	81.1	0.1	18.8	0.084	0.537	22.759694	-102.653401
X. C. Libramiento de Guadalupe - Zacatecas	7.70	3	1	9873	2.4	88.7	0.6	4.3	0.4	0.9	1.8	0.3	0.6	91.1	0.6	8.3	0.069	0.524	22.756776	-102.590066
X. C. Libramiento de Guadalupe - Zacatecas	7.70	3	2	10849	2.9	86.8	0.8	4.6	0.5	1.2	2.1	0.5	0.6	89.7	0.8	9.5	0.075	0.524	22.756783	-102.590065
Zacatecas	9.33																			

30 CARR: Corral de Piedras - Tlaltenango

CLAVE: 32579

RUTA: ZAC

AÑO: 2016

LUGAR	ESTACION				CLASIFICACION VEHICULAR EN PORCIENTO														COORDENADAS	
	KM	TE	SC	TDPA	M	A	B	C2	C3	T3S2	T3S3	T3S2R4	OTROS	A	B	C	K'	D	LATITUD	LONGITUD
T. C. Guadalajara - Zacatecas	0.00	3	0	519	1.7	82.9	0.9	11.5	1.4	1.1	0.4	0.0	0.1	84.6	0.9	14.5	0.100	0.509	21.621232	-103.048785
Tlaltenango	57.10	1	0	1266	13.1	78.5	0.5	6.0	0.5	1.3	0.1	0.0	0.0	91.6	0.5	7.9	0.120	0.504	21.766892	-103.279894

31 CARR: Ent. Ojo Caliente - Ent. Ojuelos de Jalisco

CLAVE: 00126

RUTA: ZAC

AÑO: 2016

LUGAR	ESTACION				CLASIFICACION VEHICULAR EN PORCIENTO														COORDENADAS	
	KM	TE	SC	TDPA	M	A	B	C2	C3	T3S2	T3S3	T3S2R4	OTROS	A	B	C	K'	D	LATITUD	LONGITUD
T. C. Aguascalientes - Zacatecas	0.00	3	0	2786	3.1	77.6	1.7	14.4	0.8	1.7	0.4	0.1	0.2	80.7	1.7	17.6	0.092	0.505	22.601544	-102.245926
Gral. Pánfilo Natera	16.00	3	0	1682	3.5	82.5	0.7	12.4	0.6	0.2	0.1	0.0	0.0	86.0	0.7	13.3	0.130	0.517	22.657013	-102.106168
Lim. Edos. Term. Zac. Ppia. Jal.	134.00																			
T. C. San Luis Potosí - Lagos de Moreno	137.00																			

32 CARR: Fresnillo - Ent. Bañón

CLAVE: 32070

RUTA: ZAC

AÑO: 2016

LUGAR	ESTACION				CLASIFICACION VEHICULAR EN PORCIENTO														COORDENADAS	
	KM	TE	SC	TDPA	M	A	B	C2	C3	T3S2	T3S3	T3S2R4	OTROS	A	B	C	K'	D	LATITUD	LONGITUD
T. C. Zacatecas - Durango	0.00																			
X. Lib. Fresnillo (Cuota)	2.40	3	1	4345	3.9	79.4	1.3	13.2	1.0	0.6	0.4	0.1	0.1	83.3	1.3	15.4	0.086	0.501	23.177813	-102.823729

ZACATECAS

32 CARR: Fresnillo - Ent. Bañón

CLAVE: 32070

RUTA: ZAC

AÑO: 2016

LUGAR	ESTACION				CLASIFICACION VEHICULAR EN PORCIENTO														COORDENADAS	
	KM	TE	SC	TDPA	M	A	B	C2	C3	T3S2	T3S3	T3S2R4	OTROS	A	B	C	K'	D	LATITUD	LONGITUD
X. Lib. Fresnillo (Cuota)	2.40	3	2	4366	5.0	76.8	1.5	14.4	1.1	0.6	0.4	0.1	0.1	81.8	1.5	16.7	0.074	0.501	23.177808	-102.823726
T. Der. Víctor Rosales	23.80	1	0	3867	4.5	70.7	1.8	14.0	4.5	2.9	1.2	0.2	0.2	75.2	1.8	23.0	0.098	0.515	23.143918	-102.659822
T. Der. Víctor Rosales	23.80	3	0	1484	2.7	67.9	2.1	17.9	4.0	2.9	1.7	0.5	0.3	70.6	2.1	27.3	0.087	0.509	23.144130	-102.646332
González Ortega Bañón	45.80	1	0	1493	5.0	68.8	2.2	16.0	3.5	2.7	1.2	0.3	0.3	73.8	2.2	24.0	0.104	0.514	23.176606	-102.481317
T. C. Ent. Morelos - Saltillo	49.00	1	0	2194	6.5	69.3	1.8	15.2	2.4	2.5	1.2	0.6	0.5	75.8	1.8	22.4	0.094	0.503	23.159485	-102.430175

33 CARR: Fresnillo - Plateros

CLAVE: 32022

RUTA: ZAC-022

AÑO: 2016

LUGAR	ESTACION				CLASIFICACION VEHICULAR EN PORCIENTO														COORDENADAS	
	KM	TE	SC	TDPA	M	A	B	C2	C3	T3S2	T3S3	T3S2R4	OTROS	A	B	C	K'	D	LATITUD	LONGITUD
Fresnillo (Lateral)	0.00	3	1	85	33.7	58.7	0.3	5.3	0.2	0.3	0.8	0.2	0.5	92.4	0.3	7.3	0.212	0.543	23.203192	-102.855508
Fresnillo (Central)	0.00	3	1	4405	5.4	84.7	2.8	5.5	0.6	0.5	0.4	0.0	0.1	90.1	2.8	7.1	0.073	0.510	23.203122	-102.855363
Fresnillo (Lateral)	0.00	3	2	111	38.6	52.5	0.3	6.9	0.3	0.3	0.8	0.0	0.3	91.1	0.3	8.6	0.207	0.543	23.203179	-102.855496
Fresnillo (Central)	0.00	3	2	4631	6.1	83.3	3.1	5.8	0.6	0.6	0.4	0.0	0.1	89.4	3.1	7.5	0.077	0.510	23.203111	-102.855361
Plateros	4.90																			

34 CARR: Ramal a Loreto

CLAVE: 32067

RUTA: ZAC

AÑO: 2016

LUGAR	ESTACION				CLASIFICACION VEHICULAR EN PORCIENTO														COORDENADAS	
	KM	TE	SC	TDPA	M	A	B	C2	C3	T3S2	T3S3	T3S2R4	OTROS	A	B	C	K'	D	LATITUD	LONGITUD
T. C. Providencia - Luis Moya	0.00	3	0	1848	2.0	76.1	1.5	13.7	2.3	2.6	1.2	0.4	0.2	78.1	1.5	20.4	0.078	0.505	22.390709	-102.234458
Loreto	32.30																			

35 CARR: Ramal a Nochistlán

CLAVE: 32545

RUTA: ZAC

AÑO: 2016

LUGAR	ESTACION				CLASIFICACION VEHICULAR EN PORCIENTO														COORDENADAS	
	KM	TE	SC	TDPA	M	A	B	C2	C3	T3S2	T3S3	T3S2R4	OTROS	A	B	C	K'	D	LATITUD	LONGITUD
T. C. Tepatitlán de Morelos - Jaralillo	0.00	3	1	1975	2.2	85.0	1.4	10.0	1.0	0.3	0.1	0.0	0.0	87.2	1.4	11.4	0.090	0.559	21.354994	-102.792607
T. C. Tepatitlán de Morelos - Jaralillo	0.00	3	2	2505	3.5	82.2	1.6	11.2	1.0	0.4	0.1	0.0	0.0	85.7	1.6	12.7	0.092	0.559	21.354941	-102.792633
Nochistlán	5.70	1	1	2939	4.4	85.7	1.2	7.5	0.8	0.2	0.1	0.0	0.1	90.1	1.2	8.7	0.086	0.511	21.356280	-102.819493
Nochistlán	5.70	1	2	2815	1.3	87.3	1.4	8.7	0.9	0.2	0.1	0.0	0.1	88.6	1.4	10.0	0.096	0.511	21.356194	-102.819556

ZACATECAS

36 CARR: Ramal a San Pedro Piedra Gorda

CLAVE: 00553

RUTA: ZAC-AGS

AÑO: 2016

LUGAR	ESTACION				CLASIFICACION VEHICULAR EN PORCIENTO													COORDENADAS		
	KM	TE	SC	TDPA	M	A	B	C2	C3	T3S2	T3S3	T3S2R4	OTROS	A	B	C	K'	D	LATITUD	LONGITUD
T. C. Aguascalientes - Zacatecas	0.00	3	0	1475	2.8	81.6	0.5	13.1	0.7	1.0	0.3	0.0	0.0	84.4	0.5	15.1	0.095	0.507	22.464892	-102.265847
Lim. Edos. Term. Zac. Ppia. Ags.	5.00																			
Lim. Edos. Term. Ags. Ppia. Zac.	8.00																			
San Pedro Piedra Gorda	9.00	1	0	1883	4.6	81.4	0.8	10.9	0.9	1.2	0.1	0.0	0.1	86.0	0.8	13.2	0.104	0.503	22.453389	-102.332278

37 CARR: San Gil - Jarillas

CLAVE: 00527

RUTA: AGS-012-ZAC

AÑO: 2016

LUGAR	ESTACION				CLASIFICACION VEHICULAR EN PORCIENTO													COORDENADAS		
	KM	TE	SC	TDPA	M	A	B	C2	C3	T3S2	T3S3	T3S2R4	OTROS	A	B	C	K'	D	LATITUD	LONGITUD
T. C. Rincón de Romos - Ciénega Grande	0.00	3	0	2209	8.1	70.4	1.3	15.6	1.9	2.1	0.5	0.0	0.1	78.5	1.3	20.2	0.094	0.501	22.215556	-102.022389
Guadalupe de Atlas	5.40	1	0	2358	14.2	67.0	1.7	12.1	1.8	2.3	0.5	0.1	0.3	81.2	1.7	17.1	0.088	0.501	22.264484	-102.027999
Lim. Edos. Term. Ags. Ppia. Zac.	10.00																			
Lim. Edos. Term. Zac. Ppia. Ags.	11.30																			
Jarillas	12.00																			

38 CARR: San Rafael - Villa García

CLAVE: 00525

RUTA: AGS-ZAC

AÑO: 2016

LUGAR	ESTACION				CLASIFICACION VEHICULAR EN PORCIENTO													COORDENADAS		
	KM	TE	SC	TDPA	M	A	B	C2	C3	T3S2	T3S3	T3S2R4	OTROS	A	B	C	K'	D	LATITUD	LONGITUD
T. C. Ent. La Calavera - Ent. San Pedro	0.00	3	0	2182	7.2	79.2	0.6	9.8	0.9	1.6	0.3	0.1	0.3	86.4	0.6	13.0	0.083	0.503	22.117806	-102.009139
Lim. Edos. Term. Ags. Ppia. Zac.	3.00																			
Villa García	10.00	1	0	3368	4.1	85.5	0.7	4.0	0.5	1.4	0.1	2.6	1.1	89.6	0.7	9.7	0.088	0.507	22.142145	-101.961997

39 CARR: Santa Mónica - Pozo de Gamboa

CLAVE: 32568

RUTA: ZAC

AÑO: 2016

LUGAR	ESTACION				CLASIFICACION VEHICULAR EN PORCIENTO													COORDENADAS		
	KM	TE	SC	TDPA	M	A	B	C2	C3	T3S2	T3S3	T3S2R4	OTROS	A	B	C	K'	D	LATITUD	LONGITUD
T. C. Aguascalientes - Zacatecas	0.00	3	0	5904	1.3	80.7	1.0	10.8	1.7	3.2	0.8	0.2	0.3	82.0	1.0	17.0	0.076	0.591	22.760032	-102.422364
Tacoaleche	7.60	3	0	3216	3.6	70.8	2.6	15.8	3.0	2.6	1.2	0.1	0.3	74.4	2.6	23.0	0.083	0.510	22.832504	-102.398567
Pozo de Gamboa	34.50																			

ZACATECAS

40 CARR: Sombrerete - González Ortega

CLAVE: 32568

RUTA: ZAC

AÑO: 2016

LUGAR	ESTACION				CLASIFICACION VEHICULAR EN PORCIENTO										COORDENADAS					
	KM	TE	SC	TDPA	M	A	B	C2	C3	T3S2	T3S3	T3S2R4	OTROS	A	B	C	K'	D	LATITUD	LONGITUD
T. C. Zacatecas - Durango	0.00	3	0	923	1.9	74.9	0.7	18.8	0.6	1.5	0.9	0.5	0.2	76.8	0.7	22.5	0.100	0.516	23.658712	-103.543655
González Ortega	38.70	1	0	848	3.4	75.7	1.0	15.4	1.8	1.4	0.9	0.3	0.1	79.1	1.0	19.9	0.094	0.504	23.941295	-103.461393

41 CARR: Libramiento Noreste de Zacatecas (Cuota)

CLAVE: 32582

RUTA: ZAC-D

AÑO: 2016

LUGAR	ESTACION				CLASIFICACION VEHICULAR EN PORCIENTO										COORDENADAS					
	KM	TE	SC	TDPA	M	A	B	C2	C3	T3S2	T3S3	T3S2R4	OTROS	A	B	C	K'	D	LATITUD	LONGITUD
T. C. Aguascalientes - Zacatecas	0.00	3	0	5653	0.6	46.8	6.5	7.6	4.2	18.6	5.0	9.5	1.2	47.4	6.5	46.1	0.074	0.503	22.759151	-102.460142
T. C. Ent. Morelos - Saltillo	21.00	1	0	5008	1.0	46.6	7.5	9.9	3.6	16.3	4.0	10.2	0.9	47.6	7.5	44.9	0.072	0.521	22.852889	-102.617889

42 CARR: Guadalupe - Cosío

CLAVE: 00579

RUTA: MEX-ZAC

AÑO: 2016

LUGAR	ESTACION				CLASIFICACION VEHICULAR EN PORCIENTO										COORDENADAS					
	KM	TE	SC	TDPA	M	A	B	C2	C3	T3S2	T3S3	T3S2R4	OTROS	A	B	C	K'	D	LATITUD	LONGITUD
Lim. Edos. Term. Ags. Ppia. Zac.	6.79																			
T. C. Ent. Cuauhtémoc - Ent. Osiris Cuota	12.96	3	0	1151	1.0	86.6	0.6	9.7	1.0	0.8	0.1	0.0	0.2	87.6	0.6	11.8	0.115	0.507	22.485393	-102.360876
T. C. Libramiento de Guadalupe - Zacatecas (Baja)	58.93	1	1	1873	3.6	80.9	0.5	13.1	0.7	0.6	0.3	0.1	0.2	84.5	0.5	15.0	0.108	0.542	22.735316	-102.495807
T. C. Libramiento de Guadalupe - Zacatecas (Alta)	58.93	1	1	5533	1.8	90.0	0.1	5.4	0.6	1.0	0.8	0.1	0.2	91.8	0.1	8.1	0.095	0.531	22.735477	-102.496142
T. C. Libramiento de Guadalupe - Zacatecas (Alta)	58.93	1	2	5503	1.7	89.3	0.1	6.1	0.6	1.0	0.9	0.1	0.2	91.0	0.1	8.9	0.106	0.531	22.735423	-102.495910
T. C. Libramiento de Guadalupe - Zacatecas (Baja)	58.93	1	2	1580	4.3	78.9	0.4	14.3	0.7	0.7	0.4	0.1	0.2	83.2	0.4	16.4	0.141	0.542	22.735389	-102.496020

43 CARR: Tepatitlán - Jaralillo

CLAVE: 00146

RUTA: MEX-JAL-ZAC

AÑO: 2016

LUGAR	ESTACION				CLASIFICACION VEHICULAR EN PORCIENTO										COORDENADAS					
	KM	TE	SC	TDPA	M	A	B	C2	C3	T3S2	T3S3	T3S2R4	OTROS	A	B	C	K'	D	LATITUD	LONGITUD
T. C. Lagos de Moreno - Zapotlanejo	0.00	3	0	9110	4.9	71.9	2.3	13.1	3.0	3.5	0.9	0.3	0.1	76.8	2.3	20.9	0.082	0.519	20.794563	-102.791766
T. Izq. Mezcala	22.40	3	0	1389	0.3	82.5	1.8	11.1	2.2	1.3	0.7	0.0	0.1	82.8	1.8	15.4	0.096	0.517	20.962836	-102.816464
Yahualica de González Gallo	57.40	3	1	1630	9.1	81.1	1.0	7.8	0.7	0.2	0.1	0.0	0.0	90.2	1.0	8.8	0.089	0.504	21.196139	-102.884898
Yahualica de González Gallo	57.40	3	2	1654	10.3	83.1	0.8	4.7	0.6	0.3	0.2	0.0	0.0	93.4	0.8	5.8	0.088	0.504	21.196076	-102.884807
T. Der. Mexicacán	72.45	3	0	1203	1.2	82.9	0.5	10.7	2.0	1.7	0.8	0.0	0.2	84.1	0.5	15.4	0.086	0.511	21.255149	-102.802846
Lim. Edos. Term. Jal. Ppia. Zac.	83.50																			
Lim. Edos. Term. Zac. Ppia. Jal.	106.00																			
Teocaltiche	111.00	1	0	3570	0.9	85.3	2.1	7.6	1.2	2.1	0.7	0.0	0.1	86.2	2.1	11.7	0.073	0.503	21.425764	-102.590236
Teocaltiche	111.00	3	0	3452	2.3	82.8	1.5	10.7	1.0	0.8	0.9	0.0	0.0	85.1	1.5	13.4	0.086	0.511	21.455261	-102.555796

ZACATECAS

43 CARR: Tepatitlán - Jaralillo

CLAVE: 00146

RUTA: MEX-JAL-ZAC

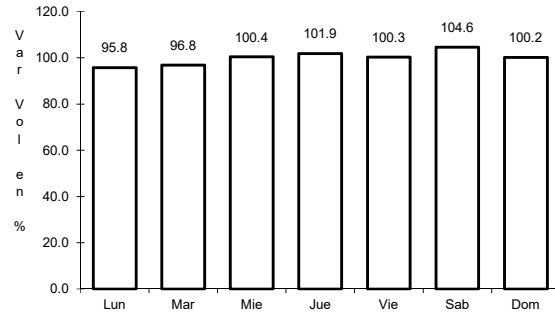
AÑO: 2016

L U G A R	E S T A C I O N				C L A S I F I C A C I O N V E H I C U L A R E N P O R C I E N T O														C O O R D E N A D A S	
	KM	TE	SC	TDPA	M	A	B	C2	C3	T3S2	T3S3	T3S2R4	OTROS	A	B	C	K'	D	LATITUD	LONGITUD
T. C. León - Aguascalientes	157.00	1	0	2873	2.0	77.9	2.8	10.3	2.5	2.9	1.4	0.1	0.1	79.9	2.8	17.3	0.085	0.511	21.641298	-102.280812

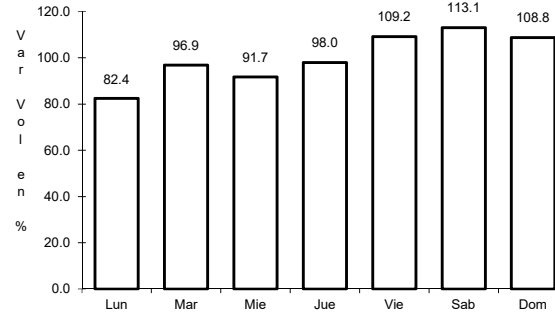
1 CARR: Aguascalientes - Jalpa

CLAVE: 00095

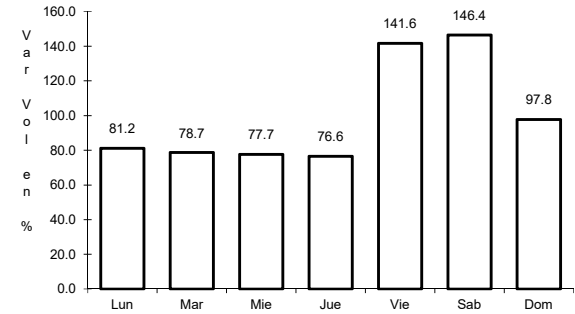
RUTA: MEX-070



Km: 0.00 Tipo: 3 Sent: 1



Km: 0.00 Tipo: 3 Sent: 2

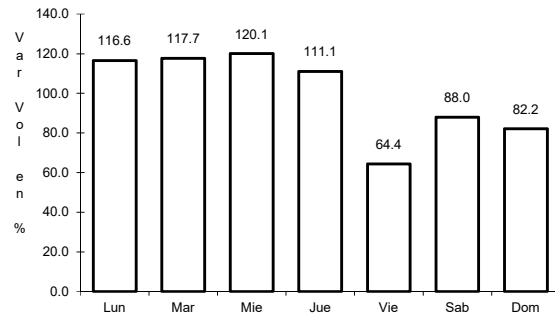


Km: 90.66 Tipo: 1 Sent: 0

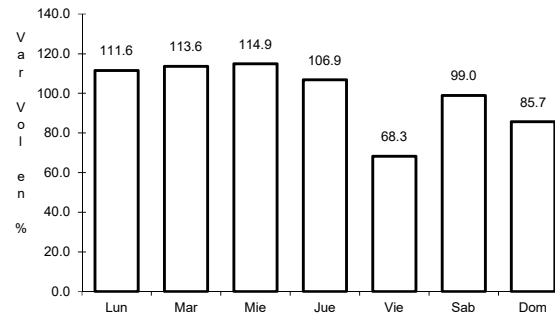
2 CARR: Aguascalientes - Zacatecas

CLAVE: 00524

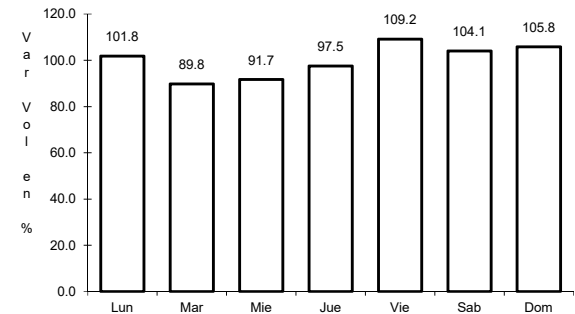
RUTA: MEX-045



Km: 6.00 Tipo: 1 Sent: 1



Km: 6.00 Tipo: 1 Sent: 2

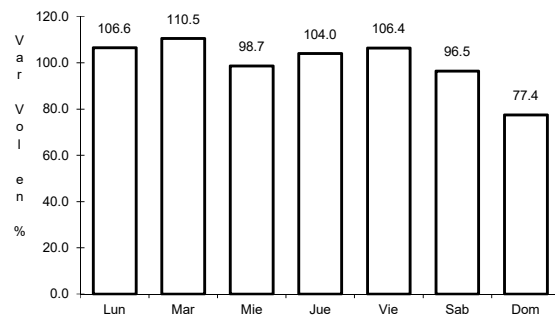


Km: 40.90 Tipo: 3 Sent: 0

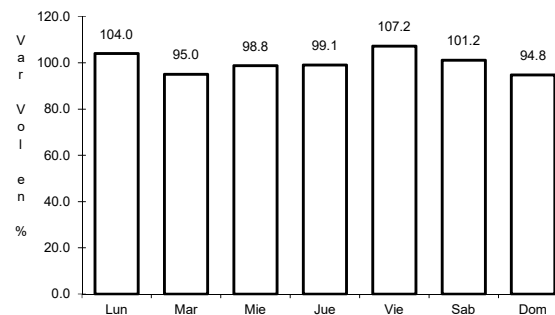
3 CARR: Blvd. Guadalupe - Zacatecas - La Escondida

CLAVE: 00544

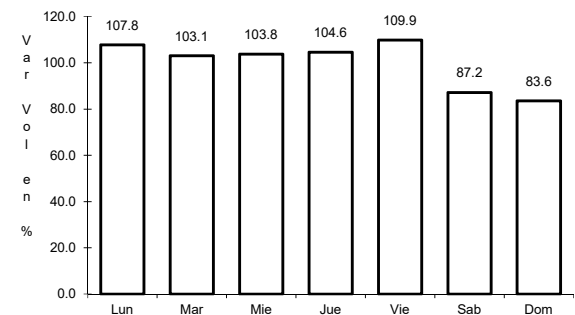
RUTA: MEX-045



Km: 7.70 Tipo: 1 Sent: 1



Km: 7.70 Tipo: 1 Sent: 2

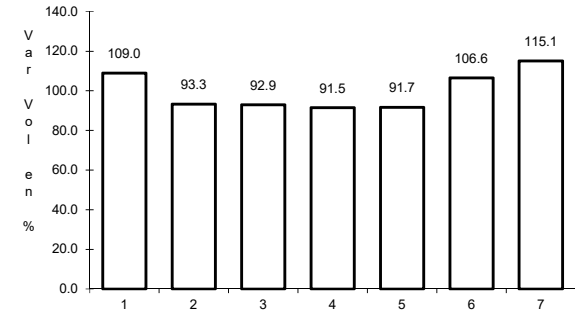
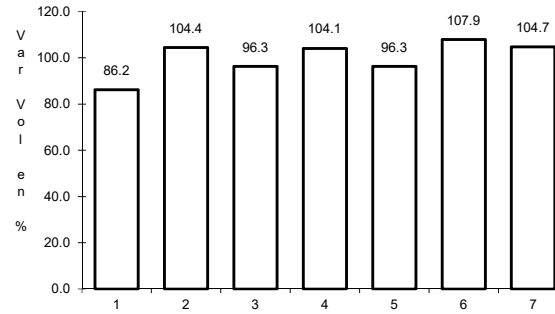
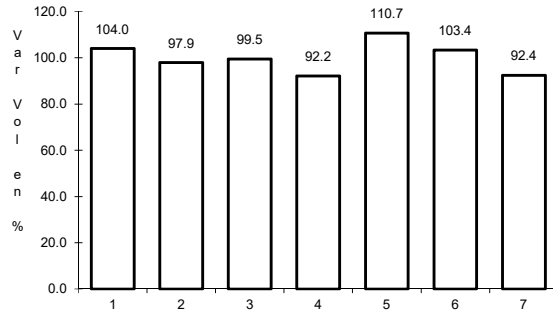


Km: 14.50 Tipo: 1 Sent: 1

4 CARR: Carbonera - T. C. (Ent. Morelos - Saltillo)

CLAVE: 00218

RUTA: MEX-062



Km: 0.00 Tipo: 3 Sent: 0

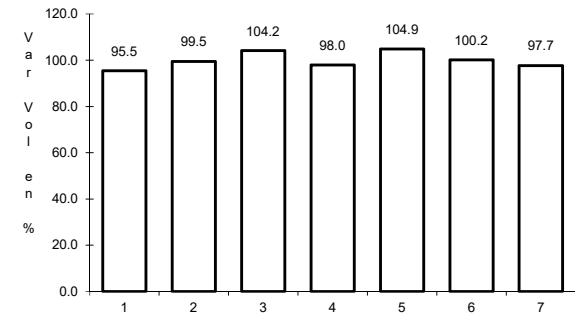
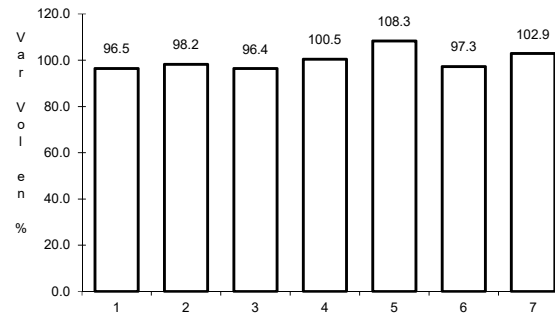
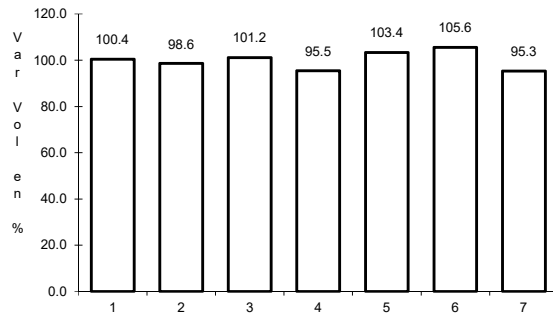
Km: 18.00 Tipo: 1 Sent: 0

Km: 112.00 Tipo: 1 Sent: 0

5 CARR: Ent. La Chicharrona - Cuencamé

CLAVE: 00152

RUTA: MEX-049



Km: 0.00 Tipo: 3 Sent: 1

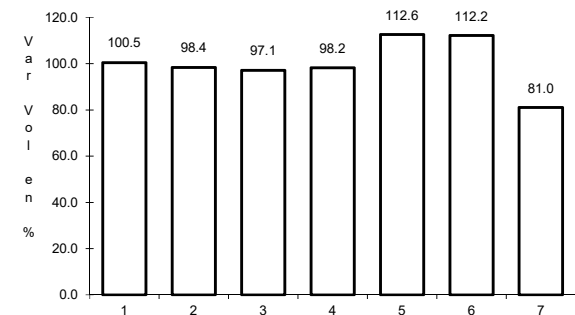
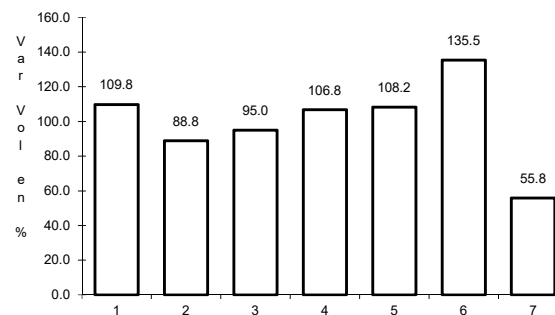
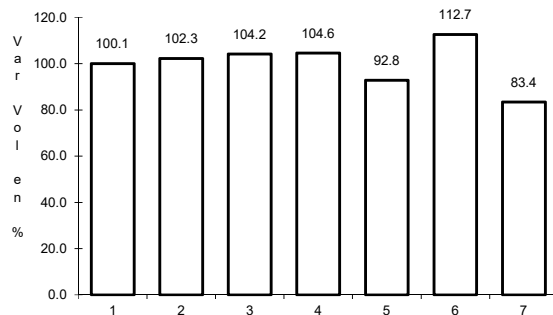
Km: 0.00 Tipo: 3 Sent: 2

Km: 124.50 Tipo: 1 Sent: 0

6 CARR: Ent. Morelos - Ent. Noria de Gringos

CLAVE: 00544

RUTA: MEX-045



Km: 0.50 Tipo: 1 Sent: 1

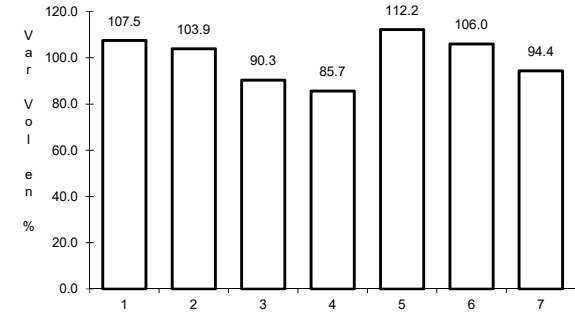
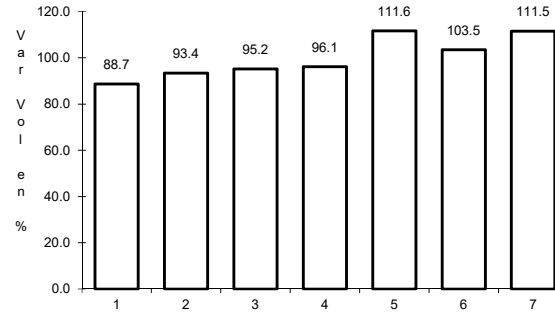
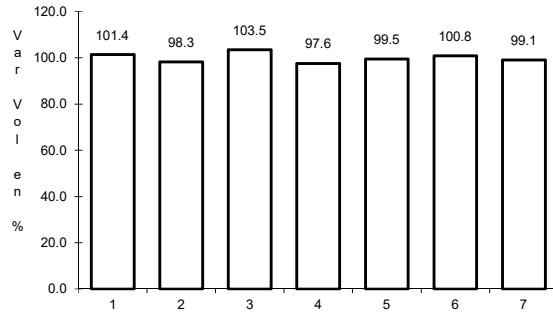
Km: 0.50 Tipo: 1 Sent: 2

Km: 0.50 Tipo: 3 Sent: 0

7 CARR: Ent. Morelos - Saltillo

CLAVE: 00149

RUTA: MEX-054



Km: 0.00 Tipo: 3 Sent: 1

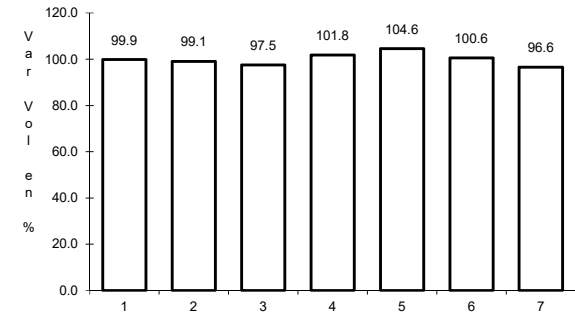
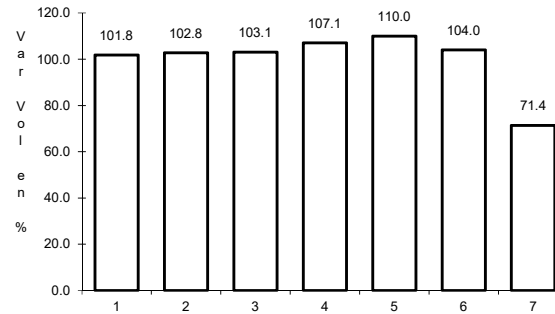
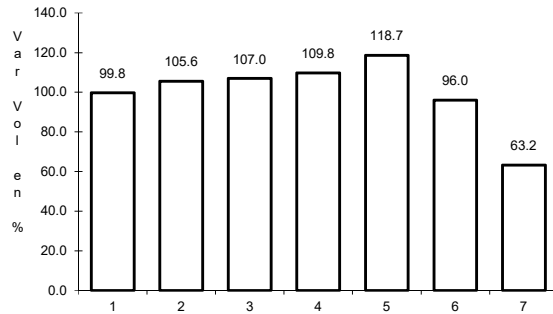
Km: 0.00 Tipo: 3 Sent: 2

Km: 333.00 Tipo: 3 Sent: 0

8 CARR: Ent. Rivier - San Marcos

CLAVE: 00285

RUTA: MEX-066



Km: 0.00 Tipo: 3 Sent: 1

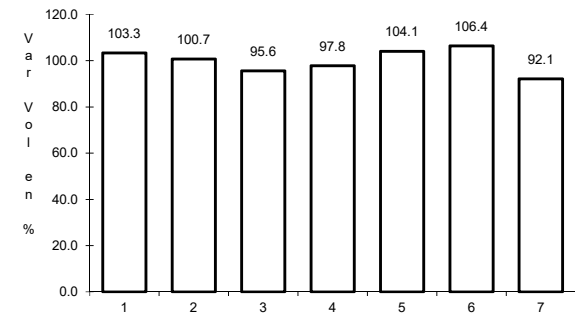
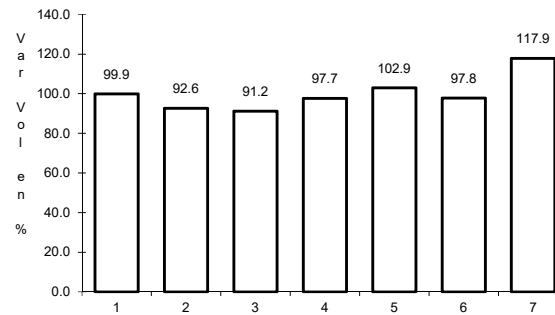
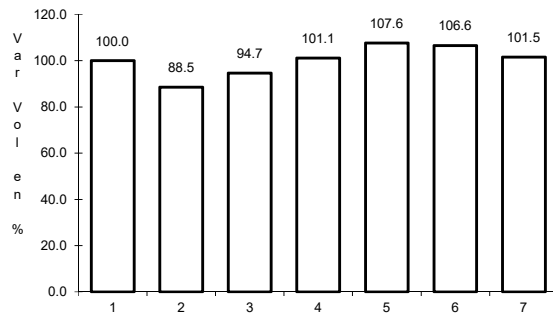
Km: 0.00 Tipo: 3 Sent: 2

Km: 55.34 Tipo: 1 Sent: 0

9 CARR: Ent. Tesistán - Ent. Malpaso

CLAVE: 00584

RUTA: MEX-023



Km: 54.00 Tipo: 1 Sent: 0

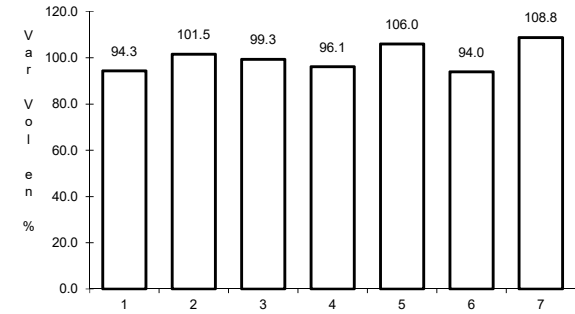
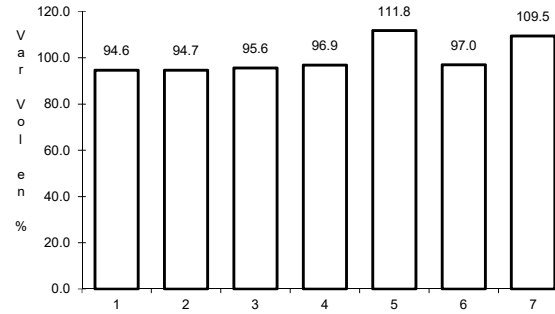
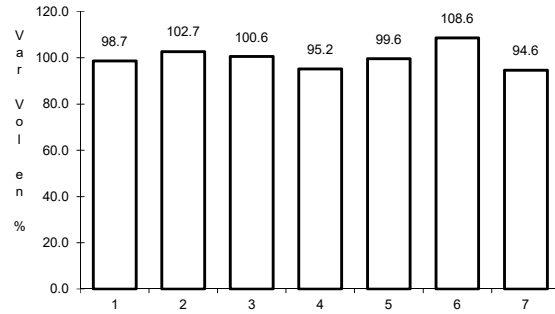
Km: 275.00 Tipo: 1 Sent: 1

Km: 275.00 Tipo: 1 Sent: 2

10 CARR: Fresnillo - Valparaíso

CLAVE: 32547

RUTA: MEX-044



Km: 0.00 Tipo: 3 Sent: 0

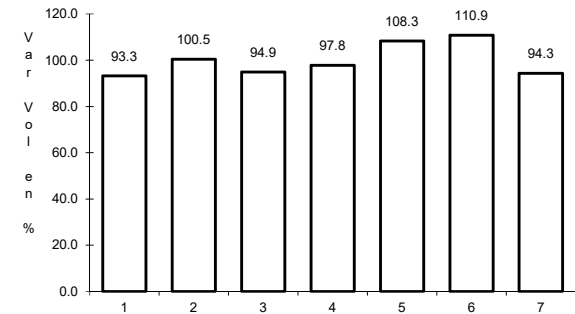
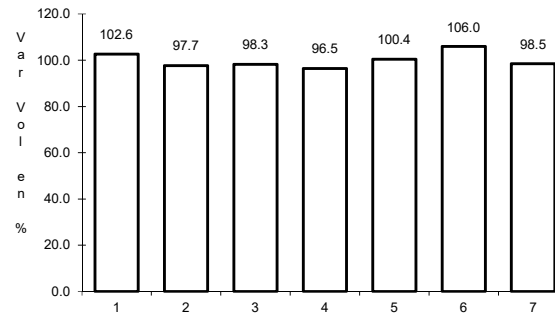
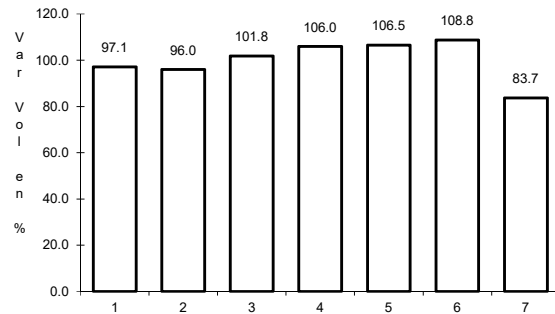
Km: 45.00 Tipo: 3 Sent: 0

Km: 90.00 Tipo: 1 Sent: 0

11 CARR: Guadalajara - Zacatecas

CLAVE: 00150

RUTA: MEX-054



Km: 6.19 Tipo: 3 Sent: 1

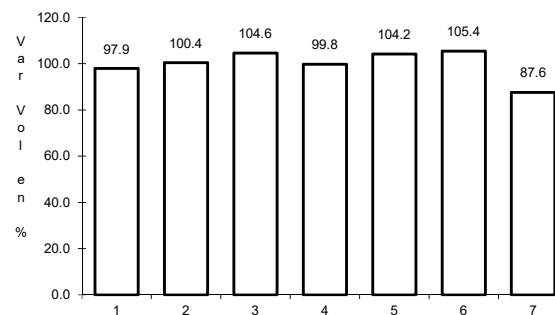
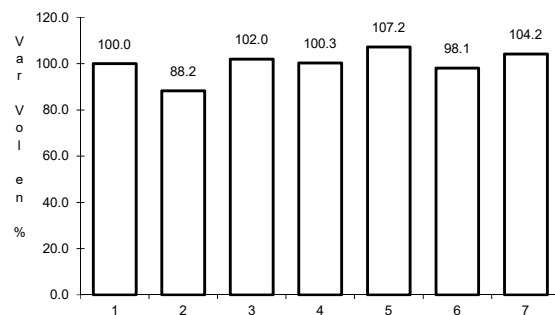
Km: 6.19 Tipo: 3 Sent: 2

Km: 159.39 Tipo: 1 Sent: 0

12 CARR: Jerez - Fresnillo

CLAVE: 32542

RUTA: MEX-023



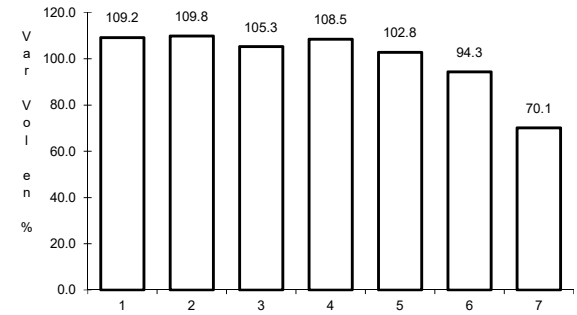
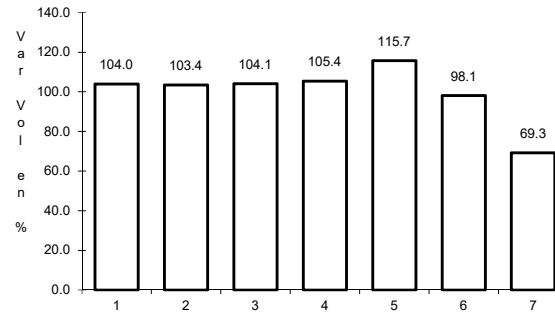
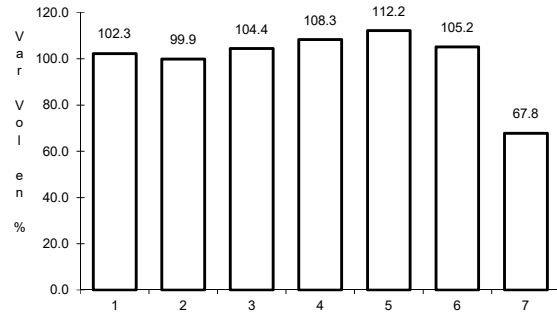
Km: 0.00 Tipo: 3 Sent: 0

Km: 60.00 Tipo: 1 Sent: 0

13 CARR: Libramiento de Guadalupe - Zacatecas

CLAVE: 32582

RUTA: MEX-045



Km: 13.00 Tipo: 3 Sent: 1

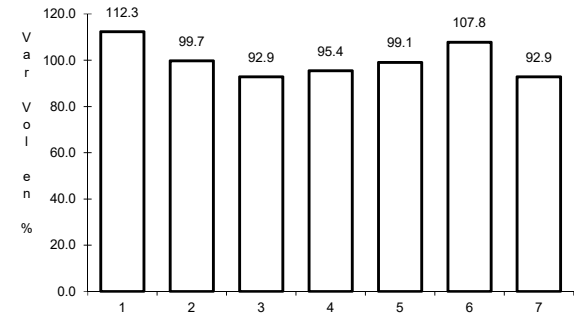
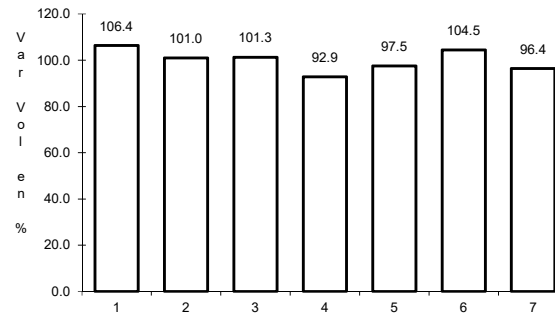
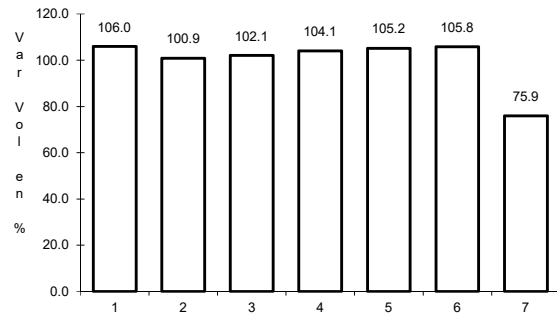
Km: 13.00 Tipo: 3 Sent: 2

Km: 17.50 Tipo: 1 Sent: 1

14 CARR: Providencia - Luis Moya

CLAVE: 00112

RUTA: MEX-071



Km: 0.00 Tipo: 3 Sent: 0

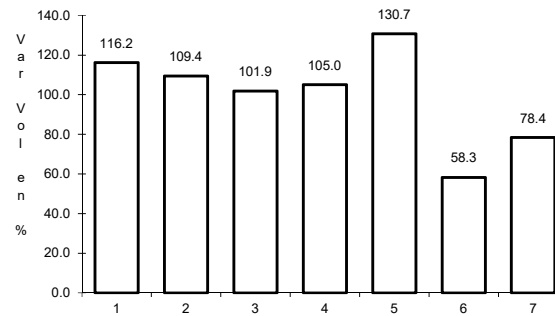
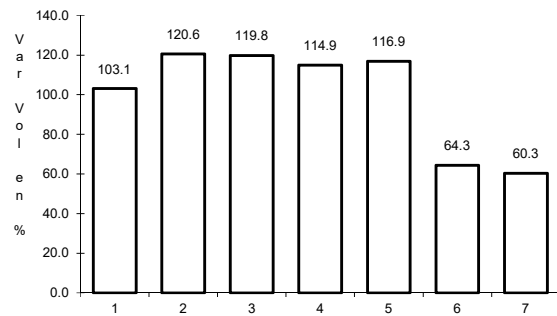
Km: 21.22 Tipo: 3 Sent: 0

Km: 43.52 Tipo: 1 Sent: 0

15 CARR: Ramal a Aeropuerto Zacatecas

CLAVE: 32546

RUTA: MEX-045



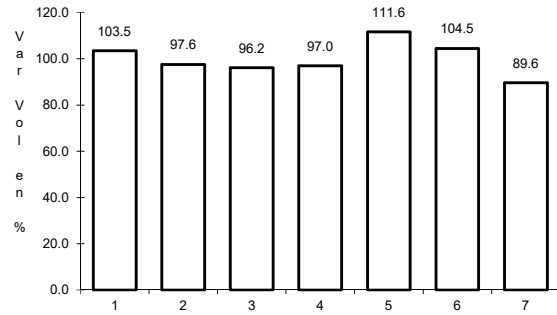
Km: 0.00 Tipo: 3 Sent: 1

Km: 0.00 Tipo: 3 Sent: 2

16 CARR: Ramal a Concepción del Oro

CLAVE: 32565

RUTA: MEX-054

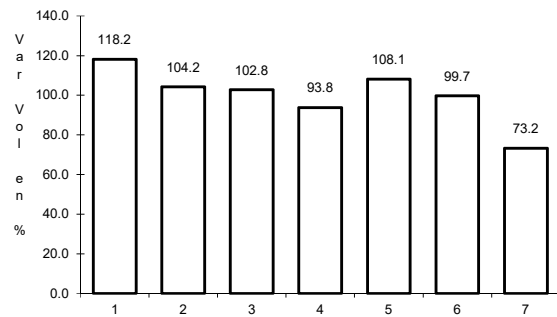


Km: 0.00 Tipo: 3 Sent: 0

17 CARR: Ramal a Francisco Murguía (Nieves)

CLAVE: 32541

RUTA: MEX-049

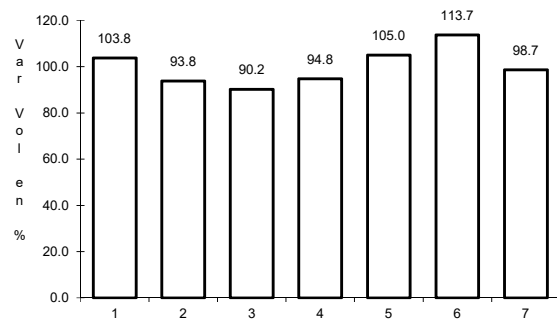


Km: 0.00 Tipo: 3 Sent: 0

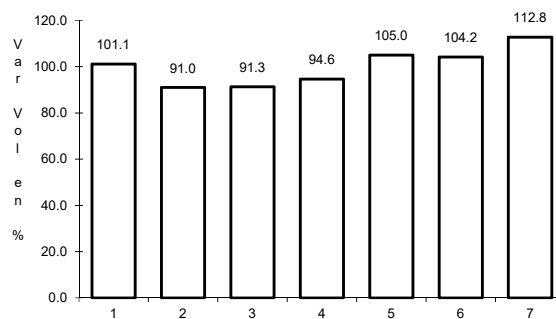
18 CARR: Ramal a Gral. Pánfilo Natera

CLAVE: 32559

RUTA: MEX-049



Km: 0.00 Tipo: 3 Sent: 1

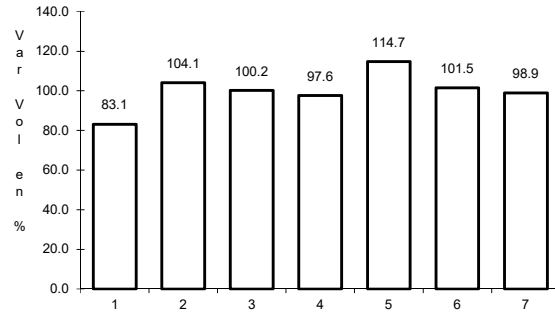


Km: 0.00 Tipo: 3 Sent: 2

19 CARR: Ramal a Ruinas de Chicomostoc

CLAVE: 00544

RUTA: MEX-045

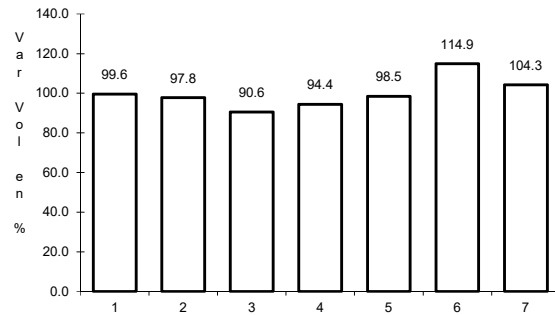


Km: 0.00 Tipo: 3 Sent: 0

20 CARR: Ramal a San Martín

CLAVE: 00544

RUTA: MEX-045

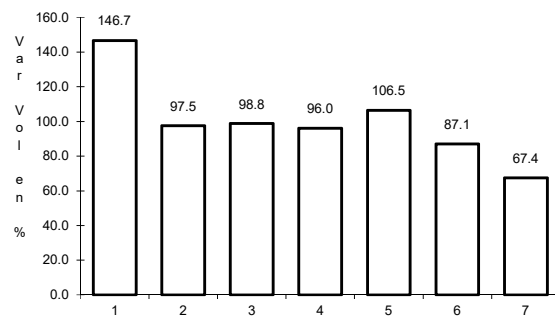


Km: 0.00 Tipo: 3 Sent: 0

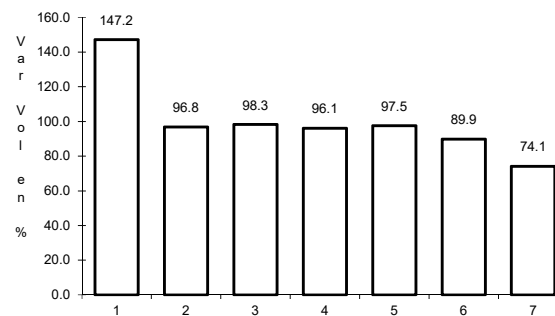
21 CARR: Ramal a Villa de Cos

CLAVE: 32564

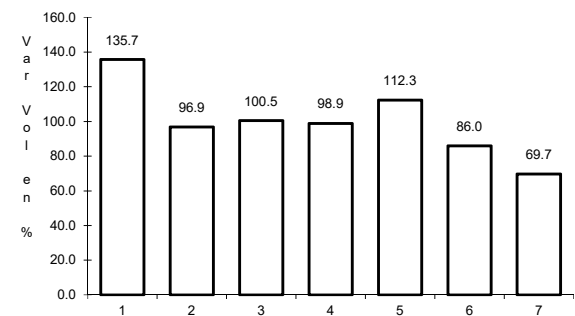
RUTA: MEX-054



Km: 0.00 Tipo: 3 Sent: 1



Km: 0.00 Tipo: 3 Sent: 2

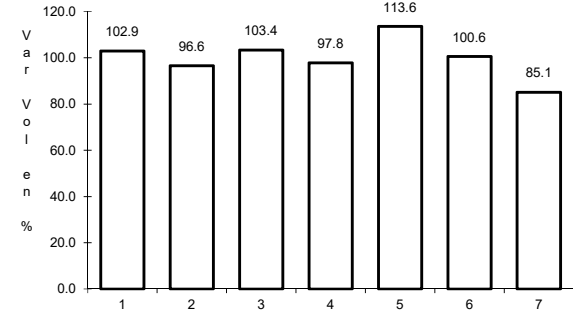
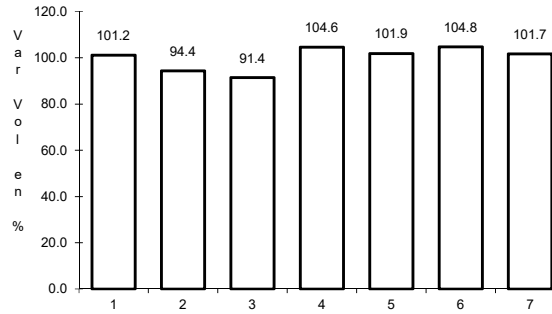
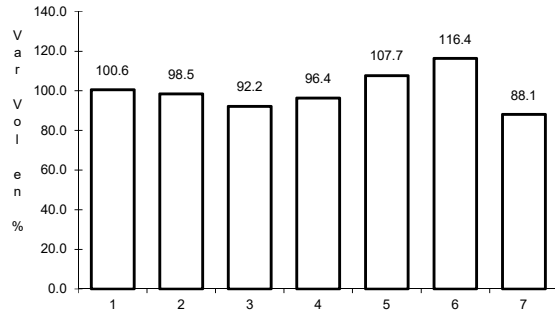


Km: 3.30 Tipo: 1 Sent: 1

22 CARR: San Luis Potosí - Ent. Arcinas

CLAVE: 00134

ruta: MEX-049



Km: 9.35 Tipo: 3 Sent: 1

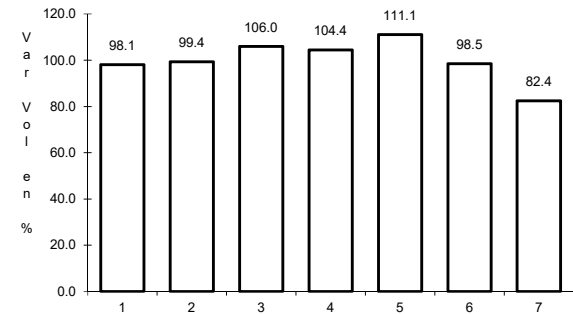
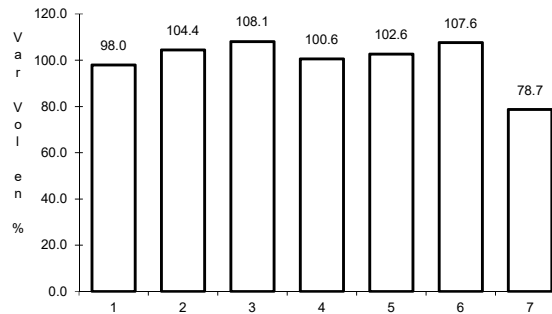
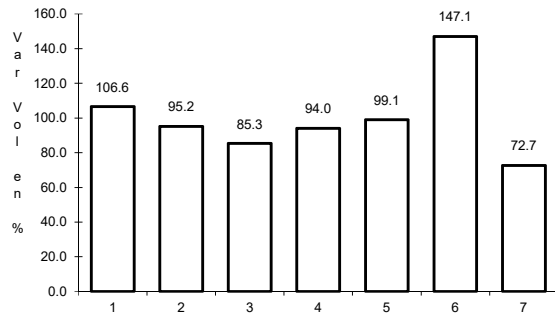
Km: 9.35 Tipo: 3 Sent: 2

Km: 162.98 Tipo: 1 Sent: 1

23 CARR: San Luis Potosí - Lagos de Moreno

CLAVE: 00133

ruta: MEX-070-080



Km: 0.00 Tipo: 3 Sent: 1

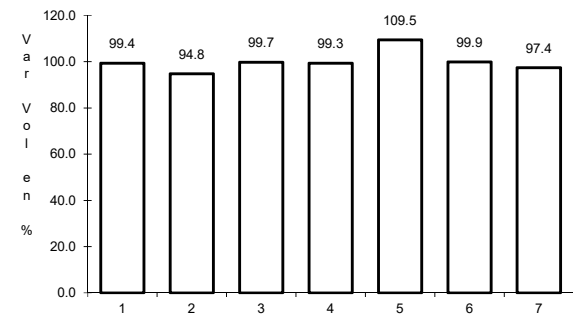
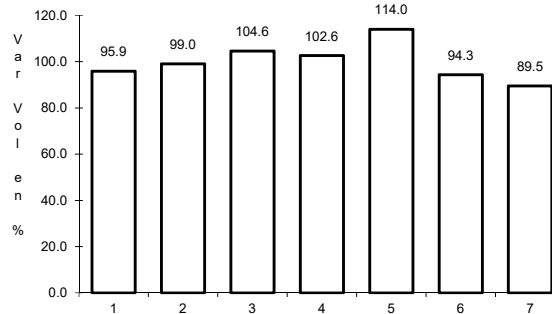
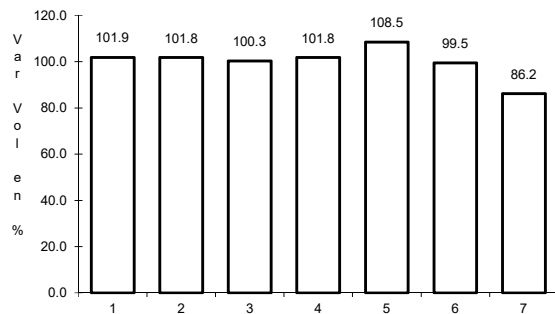
Km: 0.00 Tipo: 3 Sent: 2

Km: 61.90 Tipo: 3 Sent: 0

24 CARR: Zacatecas - Durango

CLAVE: 00544

ruta: MEX-045



Km: 6.40 Tipo: 3 Sent: 1

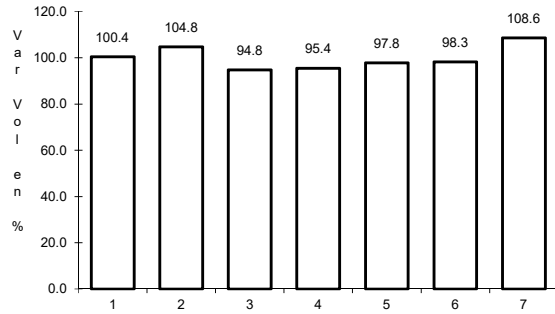
Km: 6.40 Tipo: 3 Sent: 2

Km: 121.00 Tipo: 3 Sent: 0

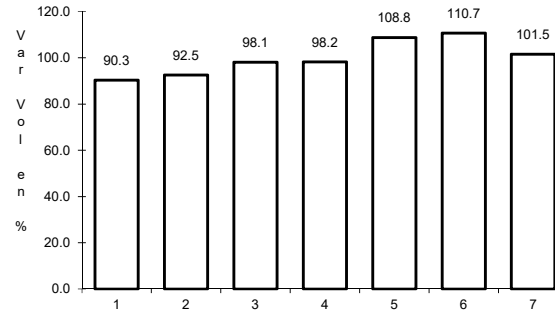
25 CARR: Cuauhtémoc - Osiris (Cuota)

CLAVE: 32558

RUTA: MEX-045D



Km: 0.00 Tipo: 3 Sent: 0

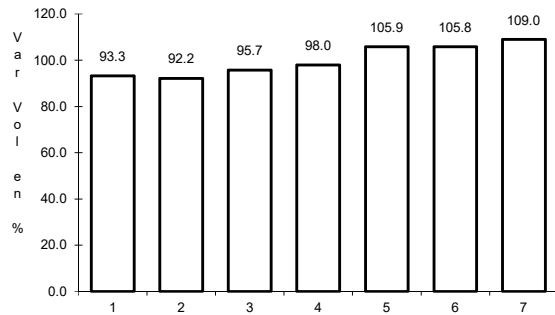


Km: 32.00 Tipo: 1 Sent: 0

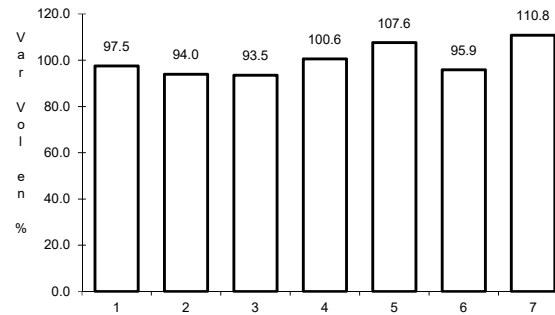
26 CARR: Libramiento de Fresnillo (Cuota)

CLAVE: 32581

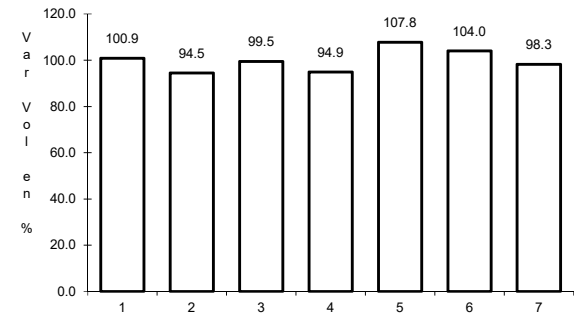
RUTA: MEX-045D



Km: 49.80 Tipo: 3 Sent: 1



Km: 49.80 Tipo: 3 Sent: 2

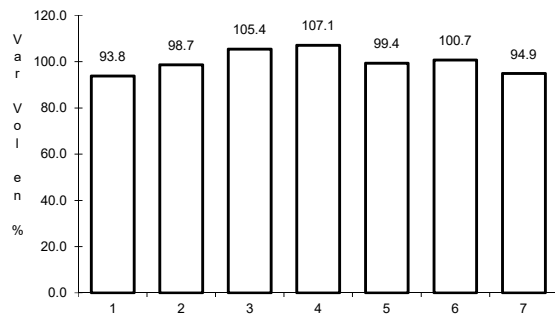


Km: 69.85 Tipo: 1 Sent: 1

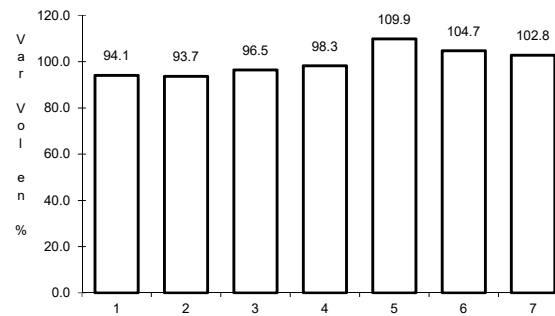
27 CARR: Libramiento de Víctor Rosales (Cuota)

CLAVE: 32015

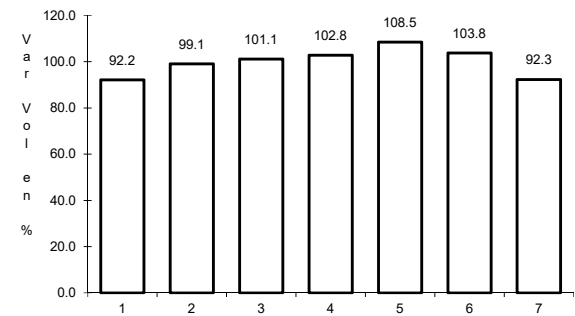
RUTA: MEX-045D



Km: 0.00 Tipo: 3 Sent: 1



Km: 0.00 Tipo: 3 Sent: 2

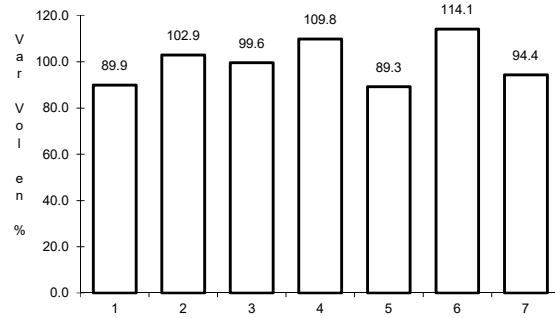


Km: 12.20 Tipo: 1 Sent: 1

28 CARR: Calera de Víctor Rosales - Santiaguillo

CLAVE: 32016

RUTA: ZAC-016



Km: 0.00

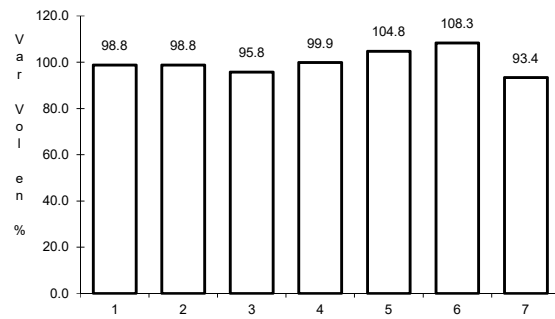
Tipo: 3

Sent: 0

29 CARR: Cieneguillas - Zacatecas

CLAVE: 32579

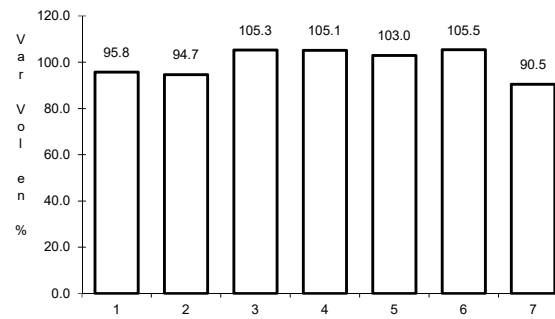
RUTA: ZAC



Km: 0.00

Tipo: 3

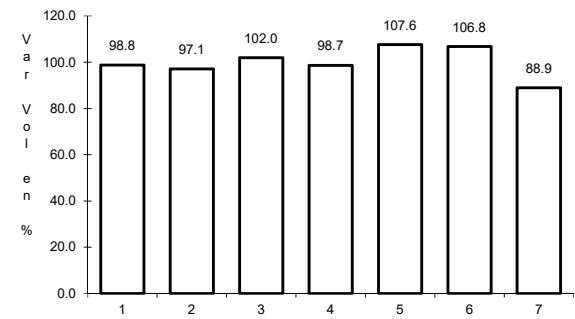
Sent: 0



Km: 7.70

Tipo: 3

Sent: 1



Km: 7.70

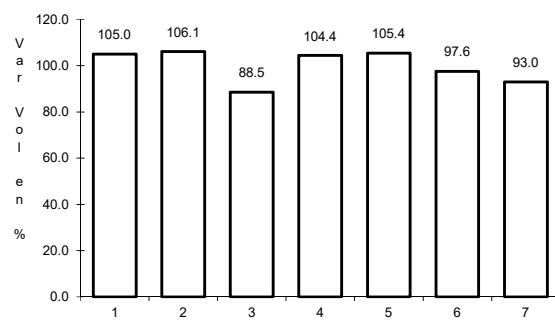
Tipo: 3

Sent: 2

30 CARR: Corral de Piedras - Tlaltenango

CLAVE: 32579

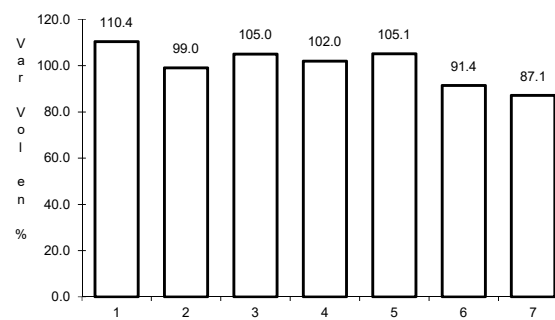
RUTA: ZAC



Km: 0.00

Tipo: 3

Sent: 0



Km: 57.10

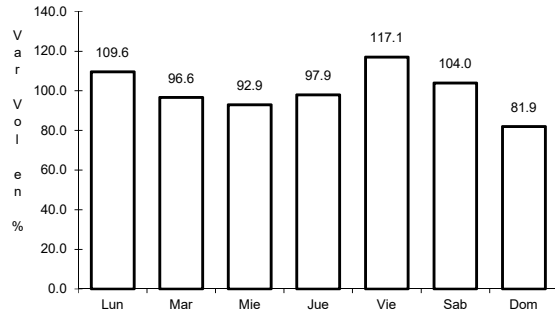
Tipo: 1

Sent: 0

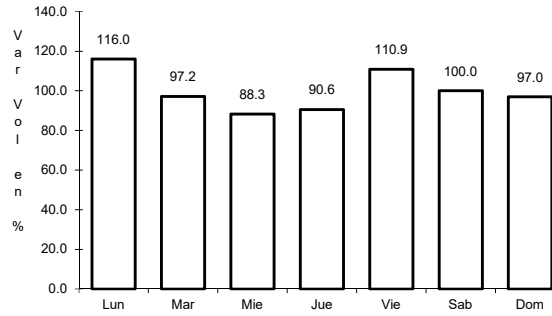
31 CARR: Ent. Ojo Caliente - Ent. Ojuelos de Jalisco

CLAVE: 00126

RUTA: ZAC



Km: 0.00 Tipo: 3 Sent: 0

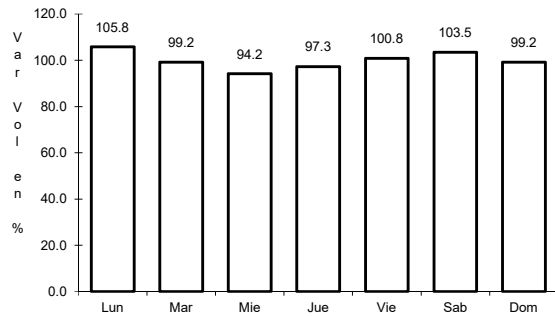


Km: 16.00 Tipo: 3 Sent: 0

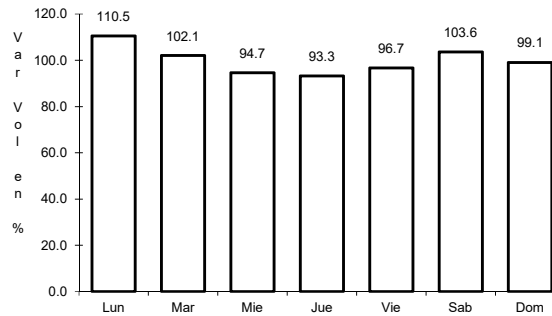
32 CARR: Fresnillo - Ent. Bañón

CLAVE: 32070

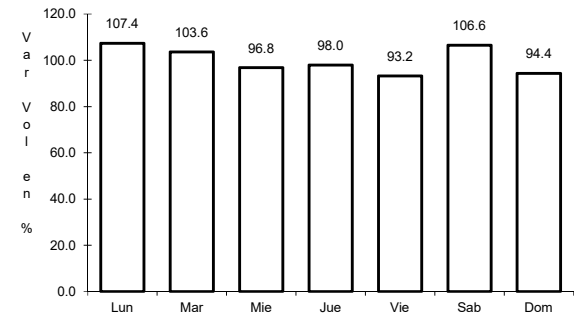
RUTA: ZAC



Km: 2.40 Tipo: 3 Sent: 1



Km: 2.40 Tipo: 3 Sent: 2

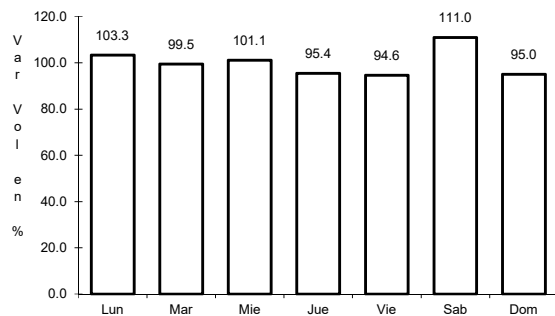


Km: 49.00 Tipo: 1 Sent: 0

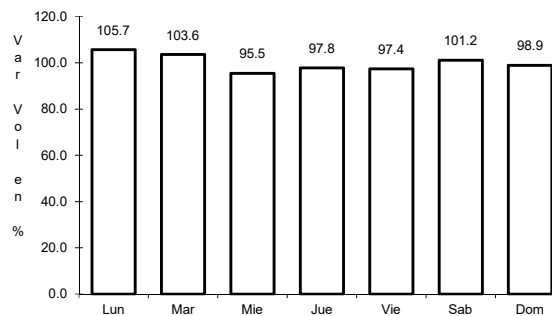
33 CARR: Fresnillo - Plateros

CLAVE: 32022

RUTA: ZAC-022



Km: 0.00 Tipo: 3 Sent: 1

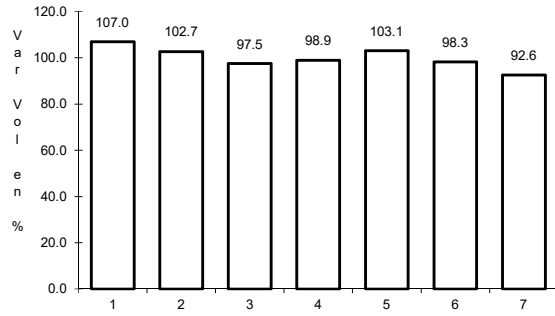


Km: 0.00 Tipo: 3 Sent: 2

34 CARR: Ramal a Loreto

CLAVE: 32067

RUTA: ZAC



Km: 0.00

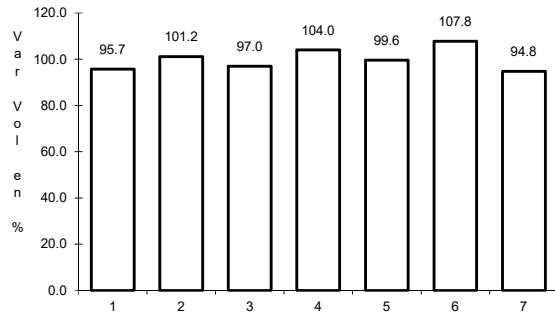
Tipo: 3

Sent: 0

35 CARR: Ramal a Nochistlán

CLAVE: 32545

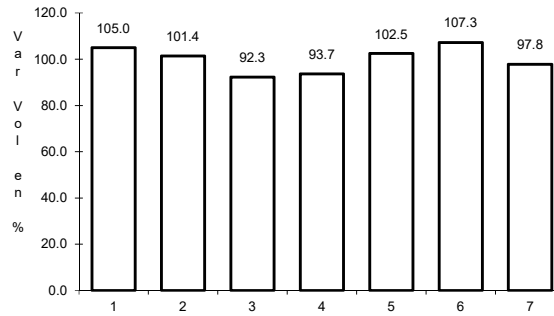
RUTA: ZAC



Km: 0.00

Tipo: 3

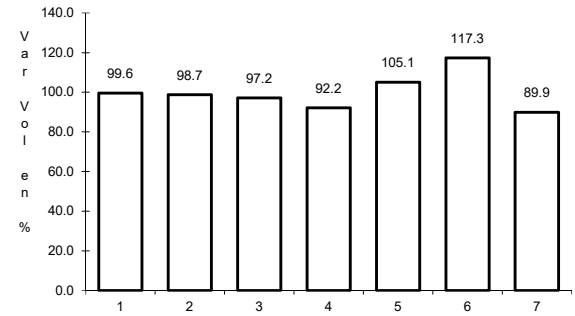
Sent: 1



Km: 0.00

Tipo: 3

Sent: 2



Km: 5.70

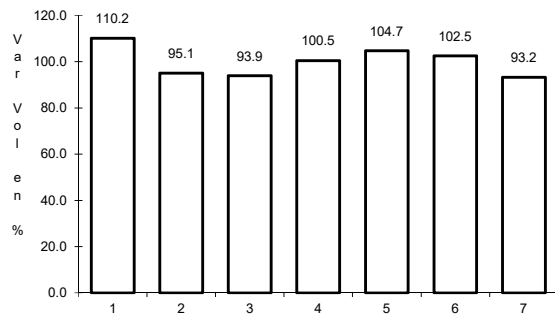
Tipo: 1

Sent: 1

36 CARR: Ramal a San Pedro Piedra Gorda

CLAVE: 00553

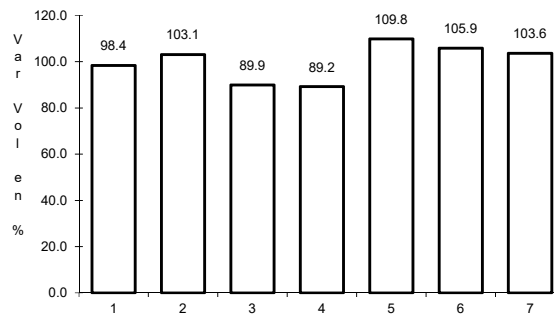
RUTA: ZAC-AGS



Km: 0.00

Tipo: 3

Sent: 0



Km: 9.00

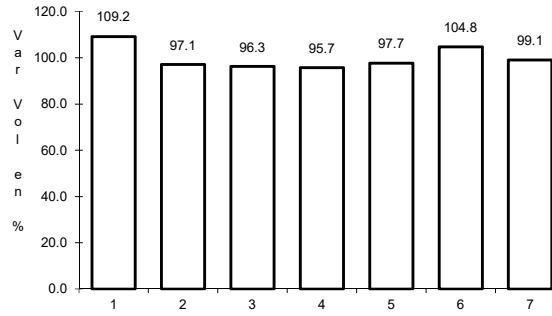
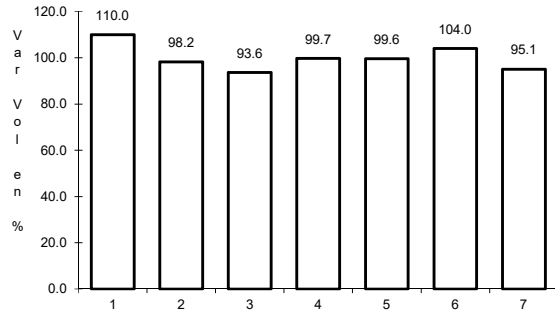
Tipo: 1

Sent: 0

37 CARR: San Gil - Jarillas

CLAVE: 00527

RUTA: AGS-012-ZAC



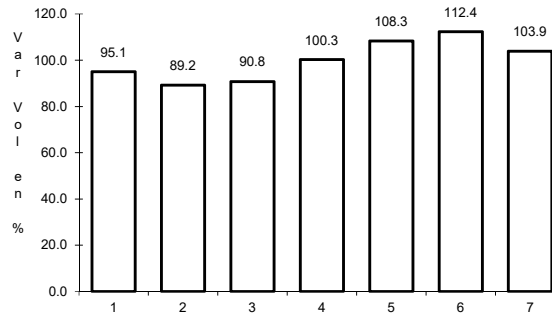
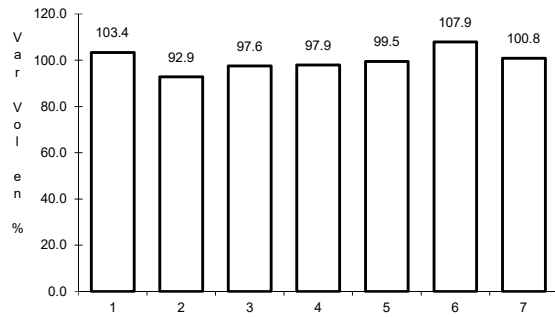
Km: 0.00 Tipo: 3 Sent: 0

Km: 5.40 Tipo: 1 Sent: 0

38 CARR: San Rafael - Villa García

CLAVE: 00525

RUTA: AGS-ZAC



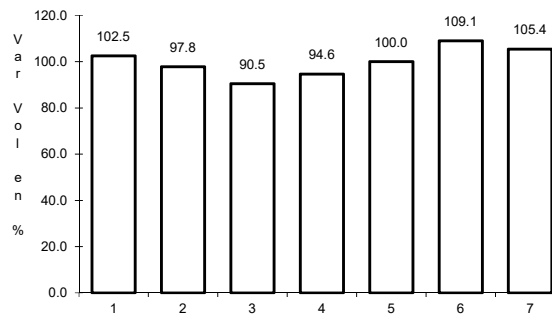
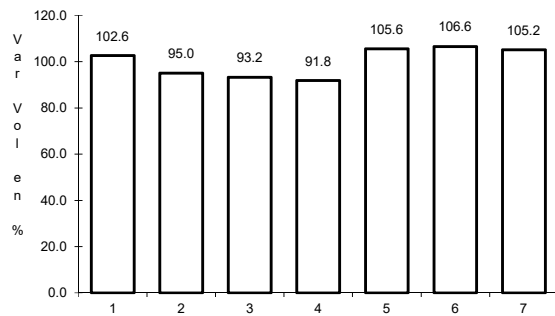
Km: 0.00 Tipo: 3 Sent: 0

Km: 10.00 Tipo: 1 Sent: 0

39 CARR: Santa Mónica - Pozo de Gamboa

CLAVE: 32568

RUTA: ZAC



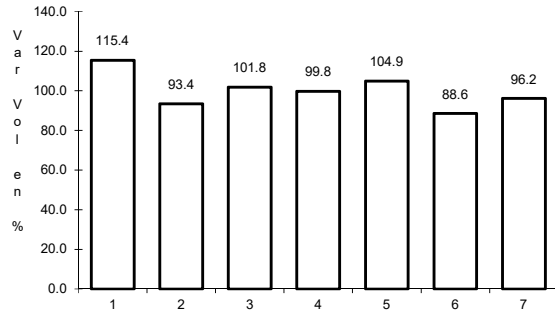
Km: 0.00 Tipo: 3 Sent: 0

Km: 7.60 Tipo: 3 Sent: 0

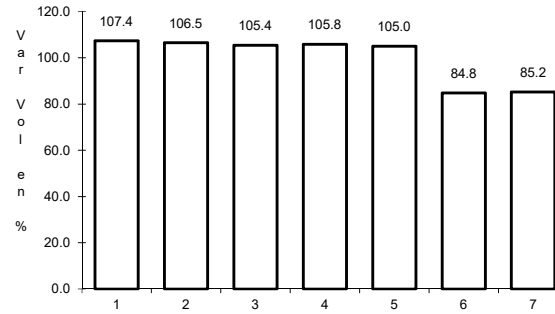
40 CARR: Sombrerete - González Ortega

CLAVE: 32568

RUTA: ZAC



Km: 0.00 Tipo: 3 Sent: 0

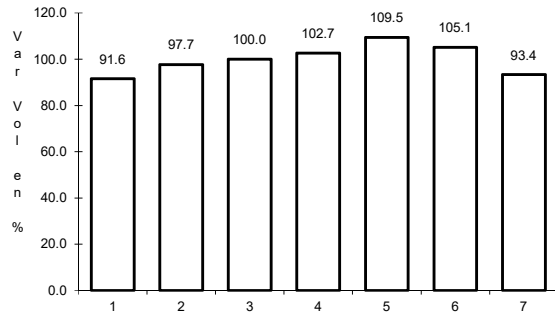


Km: 38.70 Tipo: 1 Sent: 0

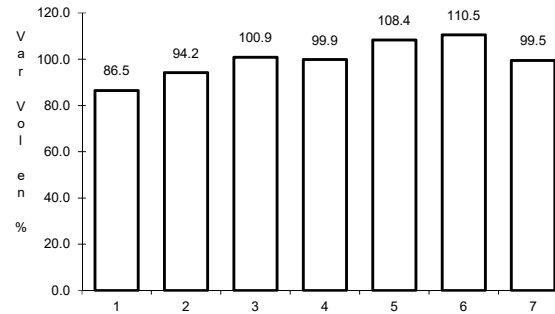
41 CARR: Libramiento Noreste de Zacatecas (Cuota)

CLAVE: 32582

RUTA: ZAC-D



Km: 0.00 Tipo: 3 Sent: 0

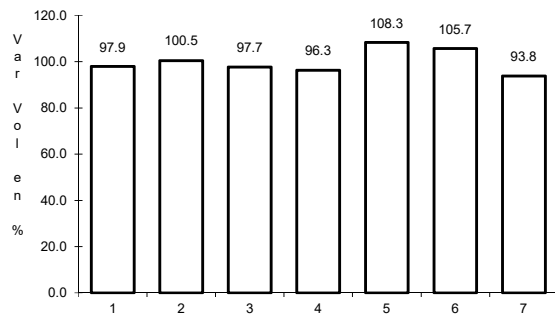


Km: 21.00 Tipo: 1 Sent: 0

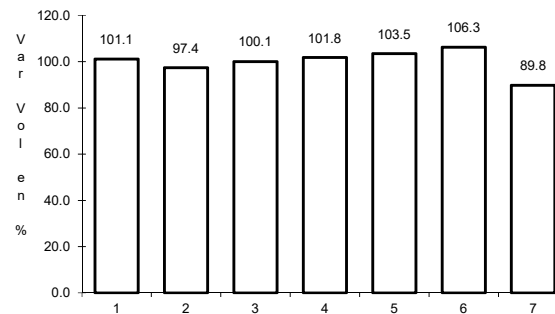
42 CARR: Guadalupe - Cosío

CLAVE: 00579

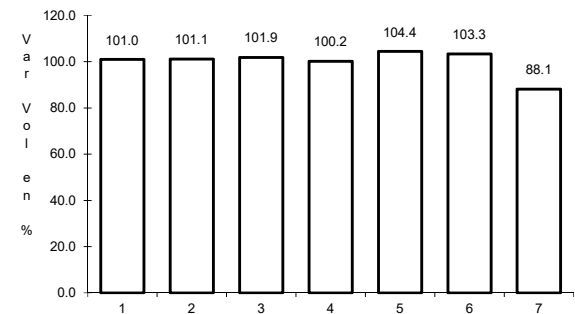
RUTA: MEX-ZAC



Km: 12.96 Tipo: 3 Sent: 0

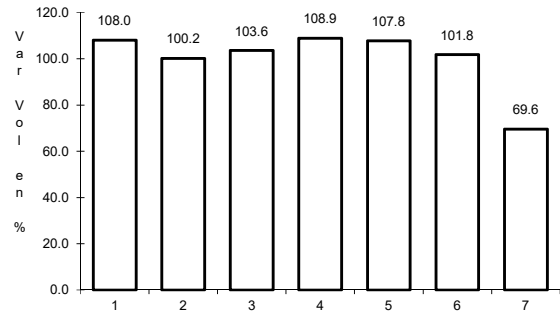


Km: 58.93 Tipo: 1 Sent: 1



Km: 58.93 Tipo: 1 Sent: 2

43 CARR: Tepatlán - Jaralillo

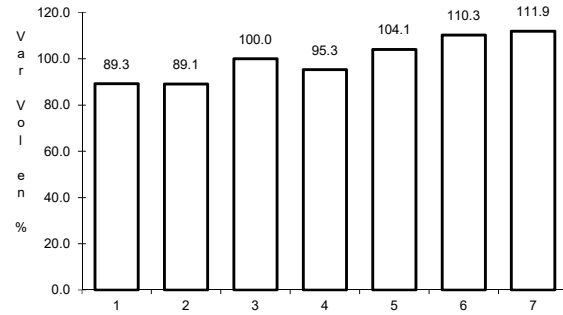


Km: 0.00

Tipo: 3

Sent: 0

CLAVE: 00146

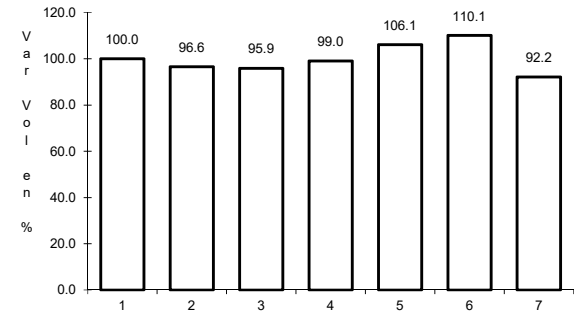


Km: 72.45

Tipo: 3

Sent: 0

RUTA: MEX-JAL-ZAC



Km: 157.00

Tipo: 1

Sent: 0