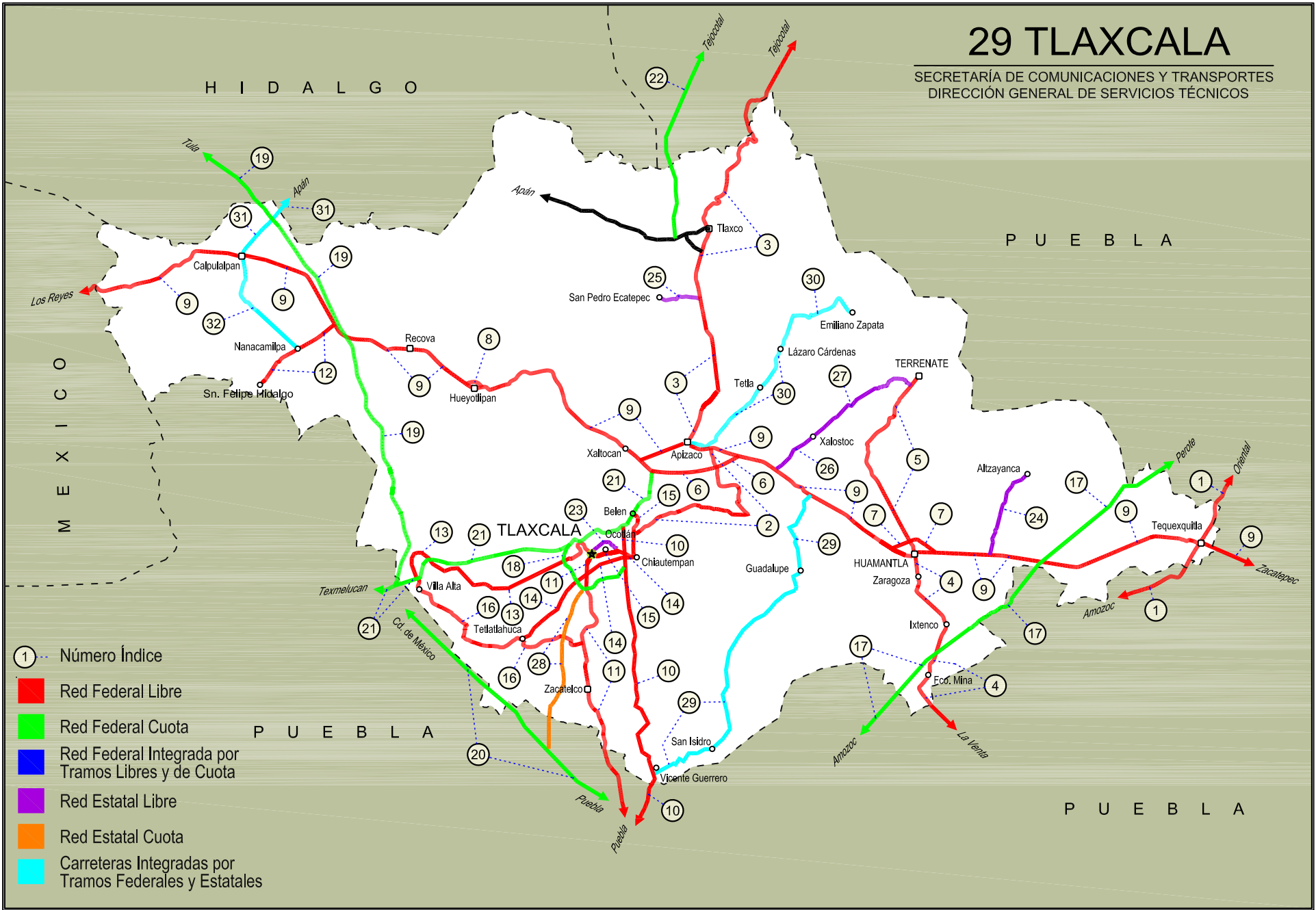
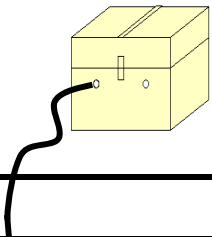


29 TLAXCALA

SECRETARÍA DE COMUNICACIONES Y TRANSPORTES
DIRECCIÓN GENERAL DE SERVICIOS TÉCNICOS





TLAXCALA

---RED FEDERAL LIBRE---

1 Amozoc - Teziutlán	MEX-129
2 Apizaco - San Pablo Apetatitlán	MEX-119
3 Apizaco - Tejocotal	MEX-119
4 Huamantla - La Venta	MEX-136
5 Huamantla - Terrenate	MEX-136
6 Libramiento de Apizaco	MEX-136
7 Libramiento Huamantla	MEX-136
8 Libramiento Hueyotlipan	MEX-136
9 Los Reyes - Zacatepec	MEX-136
10 Puebla - Belem	MEX-121
11 Puebla - Tlaxcala	MEX-119
12 Ramal a San Felipe de Hidalgo	MEX-136
13 San Martín Texmelucan - Tlaxcala	MEX-117
14 Tetlatlahuca - Santa Ana Chiautempan	MEX-119
15 Tlaxcala - Belem	MEX-119
16 Villa Alta - T. C. (Puebla - Tlaxcala)	MEX-119

---RED FEDERAL DE CUOTA---

17 Amozoc - Perote (Cuota)	MEX-140D
18 Libramiento de Tlaxcala (Cuota)	MEX-117D
19 Libramiento Norte de la Ciudad de México (Cuota)	MEX-M40D
20 México - Puebla (Cuota)	MEX-150D
21 San Martín Texmelucan - Tlaxcala - El Molinito (Cuota)	MEX-117D
22 Tlaxco - Tejocotal (Cuota)	MEX-119D

---RED ESTATAL LIBRE---

23 Libramiento de Ocotlán	TLAX
24 Ramal a Alzayanca de Hidalgo	TLAX
25 Ramal a San Pedro Ecatepec	TLAX
26 Ramal a Xalostoc	TLAX
27 Xalostoc - Terrenate	TLAX

---RED ESTATAL DE CUOTA---

28 Puebla - Tlaxcala (Cuota)	PUE-D
------------------------------	-------

---CARRETERAS INTEGRADAS POR TRAMOS FEDERALES Y ESTATALES---

29 Acocotla - Vicente Guerrero	MEX-TLAX
30 Apizaco - Emiliano Zapata	TLAX-MEX-136
31 Calpulalpan - El Ocote	MEX-HGO
32 Calpulalpan - Nanacamilpa	TLAX-MEX-136

TLAXCALA

1 CARR: Amozoc - Teziutlán

CLAVE: 00210

RUTA: MEX-129

AÑO: 2016

LUGAR	ESTACION				CLASIFICACION VEHICULAR EN PORCIENTO										COORDENADAS					
	KM	TE	SC	TDPA	M	A	B	C2	C3	T3S2	T3S3	T3S2R4	OTROS	A	B	C	K'	D	LATITUD	LONGITUD
Amozoc	0.00																			
X. C. Puebla - Córdoba (Cuota)	1.40	3	0	10671	0.8	68.2	2.2	15.2	3.4	5.4	3.3	0.6	0.9	69.0	2.2	28.8	0.088	0.505	19.051923	-98.026757
Acajete	12.00	3	0	8626	1.3	72.0	1.8	13.1	2.7	5.5	2.1	0.6	0.9	73.3	1.8	24.9	0.080	0.502	19.118196	-97.942258
Rafael Lara Grajales	35.50	1	0	4964	1.2	74.1	3.1	7.7	6.6	3.7	2.4	0.6	0.6	75.3	3.1	21.6	0.078	0.506	19.236996	-97.808396
Rafael Lara Grajales	35.50	3	0	7878	2.2	77.3	1.9	6.2	3.9	4.7	1.9	0.8	1.1	79.5	1.9	18.6	0.080	0.500	19.230977	-97.786551
Lim. Edos. Term. Pue. Ppia. Tlax.	50.54																			
X. C. Los Reyes - Zacatepec	56.31	1	0	3486	1.9	72.6	3.7	6.7	6.7	4.2	3.3	0.6	0.3	74.5	3.7	21.8	0.080	0.519	19.313561	-97.656011
Lim. Edos. Term. Tlax. Ppia. Pue.	60.22																			
Oriental	62.62	1	0	4706	2.7	82.9	1.4	4.7	1.2	3.4	2.1	0.7	0.9	85.6	1.4	13.0	0.076	0.506	19.363214	-97.630903
Oriental	62.62	3	0	6229	2.8	80.9	2.3	6.7	1.7	3.8	1.1	0.3	0.4	83.7	2.3	14.0	0.074	0.501	19.383583	-97.618884
X. C. Amozoc - Perote (Cuota)	69.00	1	1	3532	2.7	84.4	2.1	6.8	1.4	1.1	1.1	0.2	0.2	87.1	2.1	10.8	0.084	0.501	19.410776	-97.635408
X. C. Amozoc - Perote (Cuota)	69.00	1	2	3542	3.1	82.7	2.4	7.4	1.5	1.3	1.2	0.2	0.2	85.8	2.4	11.8	0.082	0.501	19.410760	-97.635407
X. C. Amozoc - Perote (Cuota)	69.00	3	0	8325	1.9	82.3	2.6	6.4	1.8	3.3	1.1	0.2	0.4	84.2	2.6	13.2	0.076	0.506	19.421233	-97.645514
Libres	76.35	3	0	8408	1.6	81.3	2.3	7.2	1.8	3.4	1.3	0.5	0.6	82.9	2.3	14.8	0.076	0.508	19.482139	-97.673867
San Miguel Tenextatiloyán	106.70	1	0	3566	1.6	81.5	3.1	7.4	2.2	2.5	1.1	0.1	0.5	83.1	3.1	13.8	0.074	0.505	19.702258	-97.598856
T. Izq. Zacapoaxtla	114.80	1	0	6979	2.1	84.9	1.8	4.8	1.1	3.7	0.8	0.1	0.7	87.0	1.8	11.2	0.068	0.505	19.759971	-97.567801
T. Izq. Zacapoaxtla	114.80	3	0	9443	2.0	84.2	1.5	5.0	0.5	4.9	0.7	0.2	1.0	86.2	1.5	12.3	0.071	0.505	19.764664	-97.564438
Zaragoza	116.80	3	0	7605	2.3	84.9	2.5	5.1	0.8	3.4	0.5	0.1	0.4	87.2	2.5	10.3	0.066	0.504	19.783061	-97.543999
Teziutlán	157.80	1	0	11697	2.7	80.0	1.3	8.5	0.4	5.1	0.7	0.3	1.0	82.7	1.3	16.0	0.066	0.502	19.817268	-97.379941

2 CARR: Apizaco - San Pablo Apetatitlán

CLAVE: 29035

RUTA: MEX-119

AÑO: 2016

LUGAR	ESTACION				CLASIFICACION VEHICULAR EN PORCIENTO										COORDENADAS					
	KM	TE	SC	TDPA	M	A	B	C2	C3	T3S2	T3S3	T3S2R4	OTROS	A	B	C	K'	D	LATITUD	LONGITUD
T. C. Los Reyes - Zacatepec	0.00	3	0	6615	4.9	84.9	0.5	3.8	0.6	3.7	0.5	0.4	0.7	89.8	0.5	9.7	0.077	0.512	19.411360	-98.118875
T. Der. Tecnológico	0.55	3	0	8686	4.6	86.3	0.1	2.2	0.1	5.2	0.4	0.2	0.9	90.9	0.1	9.0	0.074	0.536	19.404933	-98.117258
Cuaxomulco	9.10	3	0	2803	9.2	83.1	0.3	4.4	0.3	1.9	0.4	0.1	0.3	92.3	0.3	7.4	0.081	0.517	19.355796	-98.106454
Santa Cruz Tlaxcala	14.50	3	0	5846	6.3	87.8	0.2	2.8	0.1	2.5	0.2	0.0	0.1	94.1	0.2	5.7	0.070	0.511	19.353447	-98.157951
T. Izq. Contla	18.90	1	0	8913	5.4	83.9	0.1	2.0	0.1	5.7	1.2	0.4	1.2	89.3	0.1	10.6	0.066	0.516	19.339477	-98.184730
San Pablo Apetatitlán	20.00	1	0	14049	4.6	79.5	0.4	2.5	0.4	7.7	1.5	0.6	2.8	84.1	0.4	15.5	0.059	0.509	19.335707	-98.190333

TLAXCALA

3 CARR: Apizaco - Tejocotal

CLAVE: 00430

RUTA: MEX-119

AÑO: 2016

LUGAR	ESTACION				CLASIFICACION VEHICULAR EN PORCIENTO										COORDENADAS					
	KM	TE	SC	TDPA	M	A	B	C2	C3	T3S2	T3S3	T3S2R4	OTROS	A	B	C	K'	D	LATITUD	LONGITUD
Apizaco	0.00	3	1	11353	1.2	87.2	1.1	5.0	1.0	1.9	1.5	0.5	0.6	88.4	1.1	10.5	0.080	0.508	19.427544	-98.136298
Apizaco	0.00	3	2	11737	1.3	85.6	1.1	5.8	1.2	2.3	1.6	0.5	0.6	86.9	1.1	12.0	0.078	0.508	19.427526	-98.136303
T. Der. Tetla	6.60	3	0	18055	1.0	81.3	2.4	9.5	1.2	2.5	1.0	0.7	0.4	82.3	2.4	15.3	0.078	0.501	19.469346	-98.111916
T. Izq. Atlangatepec	12.15	1	0	12216	0.6	78.9	2.3	9.4	1.6	4.4	1.6	0.5	0.7	79.5	2.3	18.2	0.076	0.506	19.505833	-98.117015
Tlaxco	23.91	1	0	7915	1.3	84.7	0.5	6.6	0.8	4.1	1.0	0.2	0.8	86.0	0.5	13.5	0.067	0.506	19.582731	-98.130705
Tlaxco	23.91	3	0	5449	1.7	78.6	1.3	9.2	1.7	4.8	1.7	0.5	0.5	80.3	1.3	18.4	0.082	0.508	19.626413	-98.124663
Lim. Edos. Term. Tlax. Ppia. Pue.	34.45																			
T. Der. Tetela de Ocampo	52.20	1	0	6842	2.2	80.8	0.7	8.0	1.2	4.7	1.5	0.3	0.6	83.0	0.7	16.3	0.085	0.507	19.801089	-98.026394
Zacatlán	71.25	1	0	10378	3.3	81.2	1.3	5.9	0.5	4.6	1.6	0.5	1.1	84.5	1.3	14.2	0.069	0.502	19.918535	-97.959240
Lim. Edos. Term. Pue. Ppia. Hgo.	110.45																			
T. C. Pachuca - Tuxpam	113.15	1	0	7464	0.9	75.5	4.6	8.6	1.3	5.6	1.6	0.7	1.2	76.4	4.6	19.0	0.115	0.502	20.125613	-98.128018

4 CARR: Huamantla - La Venta

CLAVE: 29564

RUTA: MEX-136

AÑO: 2016

LUGAR	ESTACION				CLASIFICACION VEHICULAR EN PORCIENTO										COORDENADAS					
	KM	TE	SC	TDPA	M	A	B	C2	C3	T3S2	T3S3	T3S2R4	OTROS	A	B	C	K'	D	LATITUD	LONGITUD
Huamantla	0.00	3	1	5147	1.8	86.9	0.4	8.7	0.5	0.8	0.6	0.1	0.2	88.7	0.4	10.9	0.064	0.509	19.298428	-97.921141
Huamantla	0.00	3	2	5339	3.2	84.6	0.4	9.5	0.5	0.9	0.6	0.1	0.2	87.8	0.4	11.8	0.072	0.509	19.298472	-97.920936
Ignacio Zaragoza	2.30	3	0	6336	1.6	83.4	0.5	9.8	0.6	2.9	0.8	0.1	0.3	85.0	0.5	14.5	0.068	0.502	19.283369	-97.921065
Ixtenco	8.00	1	0	5854	1.6	83.1	0.5	10.6	0.5	2.8	0.4	0.1	0.4	84.7	0.5	14.8	0.069	0.508	19.259608	-97.898200
Ixtenco	8.00	3	0	4316	1.4	81.1	0.4	13.1	0.8	2.2	0.6	0.1	0.3	82.5	0.4	17.1	0.073	0.502	19.242135	-97.896605
X. C. Amozoc - Perote (Cuota)	11.40	1	0	4299	1.4	81.4	0.4	13.0	0.8	2.1	0.6	0.1	0.2	82.8	0.4	16.8	0.072	0.502	19.227353	-97.902280
Zitlaltepec	13.60	1	0	3512	1.5	82.6	0.4	10.7	0.8	2.5	1.1	0.2	0.2	84.1	0.4	15.5	0.075	0.502	19.215612	-97.907749
Zitlaltepec	13.60	3	0	3222	2.6	80.5	0.5	12.1	0.8	2.2	0.9	0.2	0.2	83.1	0.5	16.4	0.075	0.502	19.195480	-97.917401
T. C. Amozoc - Teziutlán	17.60	1	0	3056	1.8	80.2	0.4	12.1	0.9	2.8	1.2	0.3	0.3	82.0	0.4	17.6	0.065	0.502	19.176773	-97.909484

5 CARR: Huamantla - Terrenate

CLAVE: 29036

RUTA: MEX-136

AÑO: 2016

LUGAR	ESTACION				CLASIFICACION VEHICULAR EN PORCIENTO										COORDENADAS					
	KM	TE	SC	TDPA	M	A	B	C2	C3	T3S2	T3S3	T3S2R4	OTROS	A	B	C	K'	D	LATITUD	LONGITUD
Huamantla	0.00	3	0	1665	5.7	82.5	0.3	8.2	1.0	1.5	0.5	0.1	0.2	88.2	0.3	11.5	0.094	0.505	19.334761	-97.933483
T. Izq. Xicoténcatl	12.50	1	0	861	5.9	83.9	0.2	7.5	1.2	0.7	0.6	0.0	0.0	89.8	0.2	10.0	0.138	0.531	19.413362	-97.968767
Terrenate	21.00	1	0	1194	2.8	87.6	0.4	6.4	0.8	1.4	0.6	0.0	0.0	90.4	0.4	9.2	0.101	0.506	19.463852	-97.929942

TLAXCALA

6 CARR : Libramiento de Apizaco

CLAVE: 29567

RUTA: MEX-136

AÑO: 2016

LUGAR	ESTACION				CLASIFICACION VEHICULAR EN PORCIENTO											COORDENADAS				
	KM	TE	SC	TDPA	M	A	B	C2	C3	T3S2	T3S3	T3S2R4	OTROS	A	B	C	K'	D	LATITUD	LONGITUD
T. C. Los Reyes - Zacatepec	0.00																			
T. Der. Amaxac de Guerrero	6.00	1	1	11836	1.2	78.3	2.5	4.4	2.3	5.7	2.9	1.7	1.0	79.5	2.5	18.0	0.085	0.503	19.381755	-98.131746
T. Der. Amaxac de Guerrero	6.00	1	2	11995	0.9	76.5	2.7	4.8	2.5	6.5	2.9	2.1	1.1	77.4	2.7	19.9	0.071	0.503	19.381755	-98.131744
T. Der. Amaxac de Guerrero	6.00	3	1	12130	1.3	75.9	3.4	4.6	2.6	6.5	2.6	2.1	1.0	77.2	3.4	19.4	0.079	0.520	19.386847	-98.124047
T. Der. Amaxac de Guerrero	6.00	3	2	11206	1.2	73.7	3.8	5.2	2.9	7.1	2.8	2.3	1.0	74.9	3.8	21.3	0.069	0.520	19.386847	-98.124047
T. C. Los Reyes - Zacatepec	10.40																			

7 CARR : Libramiento Huamantla

CLAVE: 29567

RUTA: MEX-136

AÑO: 2016

LUGAR	ESTACION				CLASIFICACION VEHICULAR EN PORCIENTO											COORDENADAS				
	KM	TE	SC	TDPA	M	A	B	C2	C3	T3S2	T3S3	T3S2R4	OTROS	A	B	C	K'	D	LATITUD	LONGITUD
T. C. Los Reyes - Zacatepec	0.00	3	1	7498	0.6	70.0	4.0	6.5	3.0	9.2	3.2	2.8	0.7	70.6	4.0	25.4	0.089	0.510	19.322670	-97.933547
T. C. Los Reyes - Zacatepec	0.00	3	2	7797	0.5	66.9	4.3	7.1	3.5	10.2	3.7	3.1	0.7	67.4	4.3	28.3	0.100	0.510	19.322776	-97.933584
T. C. Los Reyes - Zacatepec	4.60	1	1	7620	0.7	71.5	3.6	6.7	2.3	7.8	3.9	2.7	0.8	72.2	3.6	24.2	0.078	0.517	19.320085	-97.911218
T. C. Los Reyes - Zacatepec	4.60	1	2	7129	0.6	69.6	3.8	7.1	2.6	8.1	4.3	3.1	0.8	70.2	3.8	26.0	0.100	0.517	19.320213	-97.911235

8 CARR : Libramiento Hueyotlipan

CLAVE: 29567

RUTA: MEX-136

AÑO: 2016

LUGAR	ESTACION				CLASIFICACION VEHICULAR EN PORCIENTO											COORDENADAS				
	KM	TE	SC	TDPA	M	A	B	C2	C3	T3S2	T3S3	T3S2R4	OTROS	A	B	C	K'	D	LATITUD	LONGITUD
T. C. Los Reyes - Zacatepec	0.00	3	1	6879	0.5	62.6	3.7	8.0	3.9	14.0	3.7	3.4	0.2	63.1	3.7	33.2	0.075	0.527	19.476071	-98.353925
T. C. Los Reyes - Zacatepec	0.00	3	2	6177	0.5	60.3	4.0	8.6	4.5	14.3	4.1	3.5	0.2	60.8	4.0	35.2	0.060	0.527	19.476160	-98.353939
T. C. Los Reyes - Zacatepec	2.70	1	1	6316	0.8	67.5	3.2	6.2	3.5	11.8	3.9	2.7	0.4	68.3	3.2	28.5	0.080	0.539	19.472555	-98.338907
T. C. Los Reyes - Zacatepec	2.70	1	2	7379	0.5	63.3	3.5	7.2	4.1	13.6	4.2	3.2	0.4	63.8	3.5	32.7	0.096	0.539	19.472686	-98.338861

9 CARR : Los Reyes - Zacatepec

CLAVE: 00052

RUTA: MEX-136

AÑO: 2016

LUGAR	ESTACION				CLASIFICACION VEHICULAR EN PORCIENTO											COORDENADAS				
	KM	TE	SC	TDPA	M	A	B	C2	C3	T3S2	T3S3	T3S2R4	OTROS	A	B	C	K'	D	LATITUD	LONGITUD
T. C. México - Puebla (Libre)	0.00																			
T. Izq. La Magdalena	3.35	3	1	47417	1.3	87.4	0.4	4.8	1.2	1.8	2.0	0.5	0.6	88.7	0.4	10.9	0.053	0.534	19.380593	-98.940836
T. Izq. La Magdalena	3.35	3	2	55680	1.6	86.5	0.4	5.1	1.2	1.9	2.2	0.5	0.6	88.1	0.4	11.5	0.057	0.534	19.380631	-98.940984
T. Izq. Chimalhuacán	8.45	1	1	36881	2.5	83.6	0.9	4.1	1.4	2.7	2.9	0.9	1.0	86.1	0.9	13.0	0.058	0.504	19.411673	-98.921318
T. Izq. Chimalhuacán	8.45	1	2	35492	2.4	82.7	1.0	4.3	1.5	2.8	3.3	1.0	1.0	85.1	1.0	13.9	0.054	0.504	19.411692	-98.921365

TLAXCALA

9 CARR : Los Reyes - Zacatepec

CLAVE: 00052

RUTA : MEX-136

AÑO : 2016

LUGAR	ESTACION				CLASIFICACION VEHICULAR EN PORCIENTO													COORDENADAS		
	KM	TE	SC	TDPA	M	A	B	C2	C3	T3S2	T3S3	T3S2R4	OTROS	A	B	C	K'	D	LATITUD	LONGITUD
T. C. San Bernardino - Tepexpan	17.00	3	1	12524	1.7	78.3	1.0	8.7	1.7	6.4	1.1	0.9	0.2	80.0	1.0	19.0	0.064	0.520	19.483884	-98.886424
T. C. San Bernardino - Tepexpan	17.00	3	2	14110	2.0	76.4	1.1	9.7	1.9	6.6	1.2	0.9	0.2	78.4	1.1	20.5	0.066	0.520	19.483953	-98.886529
Texcoco	23.02	3	1	18820	1.0	76.1	4.0	6.9	3.1	5.3	1.4	1.6	0.6	77.1	4.0	18.9	0.068	0.505	19.527140	-98.858089
Texcoco	23.02	3	2	19360	2.0	73.2	4.4	7.5	3.1	6.0	1.6	1.6	0.6	75.2	4.4	20.4	0.062	0.505	19.527179	-98.858126
T. Izq. Tepetlaoxtoc	30.03	1	1	13974	2.1	77.4	3.0	5.8	2.0	5.6	1.6	1.7	0.8	79.5	3.0	17.5	0.070	0.502	19.546110	-98.825475
T. Izq. Tepetlaoxtoc	30.03	1	2	14607	1.7	75.6	3.2	6.5	2.1	6.4	1.7	2.0	0.8	77.3	3.2	19.5	0.070	0.502	19.546150	-98.825501
T. Der. Totolapan	42.00	3	1	6690	1.5	75.0	3.1	4.1	3.3	6.6	3.2	2.2	1.0	76.5	3.1	20.4	0.078	0.508	19.558668	-98.723946
T. Der. Totolapan	42.00	3	2	6839	1.0	72.4	3.5	4.5	3.6	7.9	3.7	2.4	1.0	73.4	3.5	23.1	0.109	0.508	19.558775	-98.723978
Lim. Edos. Term. Mex. Ppia. Tlax.	43.15																			
Calpulalpan	59.58	3	0	17199	1.0	73.4	2.6	8.2	1.7	9.5	1.8	1.4	0.4	74.4	2.6	23.0	0.073	0.502	19.582511	-98.534419
T. Der. Nanacamilpa	71.76	3	0	12733	0.5	67.9	2.9	6.1	3.2	13.9	2.4	2.1	1.0	68.4	2.9	28.7	0.066	0.517	19.525779	-98.479745
X. C. Arco Norte de La Ciudad de México	73.80	3	1	7583	0.4	70.0	3.8	6.7	3.6	10.8	2.0	1.8	0.9	70.4	3.8	25.8	0.066	0.511	19.513504	-98.455949
X. C. Arco Norte de La Ciudad de México	73.80	3	2	7931	0.5	67.8	4.2	7.1	3.8	11.6	2.2	1.9	0.9	68.3	4.2	27.5	0.094	0.511	19.513703	-98.455942
Hueyotlilpan	88.21	3	1	7905	0.5	74.6	4.3	7.0	1.6	7.8	1.8	1.5	0.9	75.1	4.3	20.6	0.065	0.513	19.468037	-98.328315
Hueyotlilpan	88.21	3	2	7505	0.5	72.6	4.6	7.3	1.8	8.6	2.1	1.6	0.9	73.1	4.6	22.3	0.098	0.513	19.468117	-98.328355
Xaltocan	108.10	1	1	9031	0.5	74.9	2.2	6.3	2.2	8.8	2.5	1.7	0.9	75.4	2.2	22.4	0.071	0.508	19.425315	-98.218697
Xaltocan	108.10	1	2	9308	0.5	71.5	2.5	7.0	2.5	10.4	2.5	2.1	1.0	72.0	2.5	25.5	0.087	0.508	19.425400	-98.218642
Apizaco	117.74	1	1	21361	0.8	87.3	1.2	6.9	0.6	1.5	1.2	0.2	0.3	88.1	1.2	10.7	0.067	0.500	19.398650	-98.173713
Apizaco	117.74	1	2	21381	0.8	86.5	1.3	7.5	0.6	1.6	1.2	0.2	0.3	87.3	1.3	11.4	0.064	0.500	19.398900	-98.173693
Apizaco	117.74	3	0	19847	1.8	87.5	0.8	6.8	0.4	1.1	0.7	0.7	0.2	89.3	0.8	9.9	0.068	0.516	19.411909	-98.127827
T. Der. Cuaxomulco	119.85	3	1	10349	1.8	88.4	0.5	5.2	0.5	1.4	1.2	0.6	0.4	90.2	0.5	9.3	0.070	0.511	19.413303	-98.115706
T. Der. Cuaxomulco	119.85	3	2	10819	2.1	87.3	0.6	5.6	0.5	1.5	1.4	0.6	0.4	89.4	0.6	10.0	0.069	0.511	19.413324	-98.115196
T. Izq. Xalostoc	126.67	3	1	12593	0.4	77.0	2.7	7.1	1.9	5.8	2.8	1.5	0.8	77.4	2.7	19.9	0.074	0.508	19.389588	-98.052568
T. Izq. Xalostoc	126.67	3	2	12220	0.7	73.9	3.0	8.1	2.2	6.5	3.0	1.7	0.9	74.6	3.0	22.4	0.078	0.508	19.389647	-98.052484
T. Izq. Libramiento de Huamantla	141.70	1	1	11497	0.9	74.9	3.2	7.6	2.1	5.8	2.9	1.8	0.8	75.8	3.2	21.0	0.075	0.511	19.321927	-97.948095
T. Izq. Libramiento de Huamantla	141.70	1	2	11992	0.6	72.1	3.7	8.7	2.3	6.6	3.2	1.9	0.9	72.7	3.7	23.6	0.081	0.511	19.322035	-97.948110
Huamantla	143.02	3	1	8697	1.0	73.6	2.9	7.2	2.3	7.0	3.5	1.5	1.0	74.6	2.9	22.5	0.074	0.502	19.315338	-97.884165
Huamantla	143.02	3	2	8775	0.8	71.6	3.4	8.0	2.5	7.2	3.8	1.6	1.1	72.4	3.4	24.2	0.083	0.502	19.315226	-97.884171
X. C. Amozoc - Perote (Cuota)	156.76	1	1	7497	0.9	68.3	3.8	7.4	3.4	9.2	4.0	2.1	0.9	69.2	3.8	27.0	0.077	0.504	19.308307	-97.810026
X. C. Amozoc - Perote (Cuota)	156.76	1	2	7371	0.9	66.0	4.1	7.8	3.7	9.8	4.4	2.2	1.1	66.9	4.1	29.0	0.082	0.504	19.308369	-97.810023
T. Der. Cuapiaxtla	159.40	1	0	10472	1.0	59.2	2.4	10.2	4.3	13.6	5.2	3.2	0.9	60.2	2.4	37.4	0.054	0.505	19.303354	-97.779718
X. C. Amozoc - Teziutlán	173.47	1	0	10447	1.3	61.9	2.8	9.2	4.2	12.7	4.3	2.6	1.0	63.2	2.8	34.0	0.068	0.512	19.325200	-97.663158
X. C. Amozoc - Teziutlán	173.47	3	0	6611	0.7	48.1	3.9	8.3	9.6	13.7	9.7	5.1	0.9	48.8	3.9	47.3	0.052	0.510	19.315022	-97.631081
Lim. Edos. Term. Tlax. Ppia. Pue.	177.57																			

TLAXCALA

9 CARR: Los Reyes - Zacatepec

CLAVE: 00052

RUTA: MEX-136

AÑO: 2016

LUGAR	ESTACION				CLASIFICACION VEHICULAR EN PORCIENTO														COORDENADAS	
	KM	TE	SC	TDPA	M	A	B	C2	C3	T3S2	T3S3	T3S2R4	OTROS	A	B	C	K'	D	LATITUD	LONGITUD
Zacatepec	187.67	1	0	6536	0.3	42.2	4.8	9.7	7.9	21.2	7.4	5.8	0.7	42.5	4.8	52.7	0.058	0.516	19.268404	-97.535621

10 CARR: Puebla - Belem

CLAVE: 00055

RUTA: MEX-121

AÑO: 2016

LUGAR	ESTACION				CLASIFICACION VEHICULAR EN PORCIENTO														COORDENADAS	
	KM	TE	SC	TDPA	M	A	B	C2	C3	T3S2	T3S3	T3S2R4	OTROS	A	B	C	K'	D	LATITUD	LONGITUD
T. C. Puebla - Tlaxcala	0.00																			
X. C. Puebla - Córdoba (Cuota)	4.00	3	1	34008	1.1	86.0	0.7	6.7	0.8	2.0	1.7	0.4	0.6	87.1	0.7	12.2	0.065	0.529	19.089000	-98.185160
X. C. Puebla - Córdoba (Cuota)	4.00	3	2	30219	0.9	84.5	0.8	7.9	0.8	2.2	1.9	0.4	0.6	85.4	0.8	13.8	0.083	0.529	19.089044	-98.185400
Lim. Edos. Term. Pue. Ppia. Tlax.	6.60																			
Lim. Edos. Term. Tlax. Ppia. Pue.	9.77																			
Lim. Edos. Term. Pue. Ppia. Tlax.	10.25																			
T. Izq. Zacatelco	16.70	1	1	17522	1.4	83.6	0.9	9.3	1.2	2.2	0.7	0.6	0.1	85.0	0.9	14.1	0.070	0.507	19.207005	-98.196186
T. Izq. Zacatelco	16.70	1	2	16966	1.2	82.9	1.0	9.7	1.2	2.6	0.7	0.6	0.1	84.1	1.0	14.9	0.074	0.507	19.207197	-98.196396
X. C. Tlaxcala - Belem	28.80	1	1	23767	1.6	87.9	0.7	3.9	0.7	2.2	1.7	0.5	0.8	89.5	0.7	9.8	0.066	0.511	19.315694	-98.204369
X. C. Tlaxcala - Belem	28.80	1	2	22781	1.7	86.7	0.7	4.4	0.7	2.5	1.9	0.5	0.9	88.4	0.7	10.9	0.077	0.511	19.315649	-98.204219
T. C. San Martín Texmelucan - Ocotoxco (Cuota)	34.90																			

11 CARR: Puebla - Tlaxcala

CLAVE: 00475

RUTA: MEX-119

AÑO: 2016

LUGAR	ESTACION				CLASIFICACION VEHICULAR EN PORCIENTO														COORDENADAS	
	KM	TE	SC	TDPA	M	A	B	C2	C3	T3S2	T3S3	T3S2R4	OTROS	A	B	C	K'	D	LATITUD	LONGITUD
Puebla	0.00																			
X. C. Puebla - Córdoba (Cuota) Lateral	5.41	3	1	3811	3.3	79.4	0.5	13.7	0.8	1.2	0.8	0.1	0.2	82.7	0.5	16.8	0.079	0.546	19.092592	-98.206549
X. C. Puebla - Córdoba (Cuota) Central	5.41	3	1	11089	1.5	86.8	0.7	3.7	1.4	2.1	2.5	0.5	0.8	88.3	0.7	11.0	0.071	0.521	19.092296	-98.206552
X. C. Puebla - Córdoba (Cuota) Lateral	5.41	3	2	4198	2.0	78.3	0.5	15.8	0.9	1.4	0.8	0.1	0.2	80.3	0.5	19.2	0.100	0.546	19.092583	-98.206749
X. C. Puebla - Córdoba (Cuota) Central	5.41	3	2	10192	2.0	85.3	0.7	4.1	1.4	2.3	2.8	0.5	0.9	87.3	0.7	12.0	0.066	0.521	19.092290	-98.206640
Lim. Edos. Term. Pue. Ppia. Tlax.	11.83																			
Panzacola	13.14	3	1	11427	1.9	87.0	0.3	5.0	0.3	2.0	2.3	0.4	0.8	88.9	0.3	10.8	0.062	0.505	19.151730	-98.223604
Panzacola	13.14	3	2	11212	1.9	86.1	0.3	5.5	0.3	2.3	2.4	0.4	0.8	88.0	0.3	11.7	0.062	0.505	19.151854	-98.223683
San Toribio Xicohtzinco	16.10	3	1	9572	3.1	87.3	0.4	6.7	0.2	1.0	0.9	0.1	0.3	90.4	0.4	9.2	0.076	0.502	19.187110	-98.237806
San Toribio Xicohtzinco	16.10	3	2	9633	3.7	85.9	0.4	7.3	0.2	1.1	1.0	0.1	0.3	89.6	0.4	10.0	0.073	0.502	19.186905	-98.237847
Zacatelco	20.78	1	1	10640	3.5	87.7	0.3	6.4	0.2	0.8	0.9	0.0	0.2	91.2	0.3	8.5	0.066	0.511	19.207408	-98.240434
Zacatelco	20.78	1	2	10194	3.5	87.3	0.3	6.7	0.2	0.8	1.0	0.0	0.2	90.8	0.3	8.9	0.061	0.511	19.207447	-98.240534

TLAXCALA

11 CARR: Puebla - Tlaxcala

CLAVE: 00475

RUTA: MEX-119

AÑO: 2016

LUGAR	ESTACION				CLASIFICACION VEHICULAR EN PORCIENTO										COORDENADAS					
	KM	TE	SC	TDPA	M	A	B	C2	C3	T3S2	T3S3	T3S2R4	OTROS	A	B	C	K'	D	LATITUD	LONGITUD
T. Izq. San Martín Texmelucan	22.99	1	1	11149	2.1	89.9	0.3	5.1	0.3	1.0	0.9	0.1	0.3	92.0	0.3	7.7	0.068	0.503	19.234046	-98.243016
T. Izq. San Martín Texmelucan	22.99	1	2	11013	2.3	89.2	0.3	5.6	0.3	1.0	0.9	0.1	0.3	91.5	0.3	8.2	0.070	0.503	19.234002	-98.243186
T. Der. Tepeyanco (2° Acceso)	24.97	3	1	10074	2.0	90.9	0.4	4.3	0.3	0.5	0.9	0.1	0.6	92.9	0.4	6.7	0.070	0.510	19.252763	-98.230180
T. Der. Tepeyanco (2° Acceso)	24.97	3	2	9684	2.1	90.3	0.4	4.6	0.3	0.6	1.0	0.1	0.6	92.4	0.4	7.2	0.070	0.510	19.252833	-98.230285
T. Der. Ocotlán (Baja)	32.45	1	1	5532	2.4	93.6	0.1	3.1	0.0	0.2	0.5	0.0	0.1	96.0	0.1	3.9	0.084	0.505	19.302461	-98.241025
T. Der. Ocotlán (Alta)	32.45	1	1	9180	1.4	93.4	0.1	1.9	0.0	0.6	2.2	0.1	0.3	94.8	0.1	5.1	0.074	0.529	19.302861	-98.241084
T. Der. Ocotlán (Baja)	32.45	1	2	5651	1.3	94.4	0.1	3.4	0.0	0.2	0.5	0.0	0.1	95.7	0.1	4.2	0.076	0.505	19.302231	-98.241307
T. Der. Ocotlán (Alta)	32.45	1	2	8167	1.2	93.2	0.1	2.0	0.0	0.7	2.4	0.1	0.3	94.4	0.1	5.5	0.070	0.529	19.302674	-98.241193
Tlaxcala	33.22	1	1	9532	2.3	95.2	0.0	1.3	0.1	0.1	0.8	0.1	0.1	97.5	0.0	2.5	0.069	0.531	19.309706	-98.240473
Tlaxcala	33.22	1	2	10787	1.5	95.9	0.0	1.4	0.1	0.1	0.8	0.1	0.1	97.4	0.0	2.6	0.066	0.531	19.309625	-98.240544

12 CARR: Ramal a San Felipe de Hidalgo

CLAVE: 29565

RUTA: MEX-136

AÑO: 2016

LUGAR	ESTACION				CLASIFICACION VEHICULAR EN PORCIENTO										COORDENADAS					
	KM	TE	SC	TDPA	M	A	B	C2	C3	T3S2	T3S3	T3S2R4	OTROS	A	B	C	K'	D	LATITUD	LONGITUD
T. C. Los Reyes - Zacatepec	0.00	3	0	3313	0.9	86.6	0.5	8.6	0.9	2.0	0.3	0.1	0.1	87.5	0.5	12.0	0.081	0.514	19.526826	-98.482692
San Felipe de Hidalgo	10.50	1	0	1825	7.0	85.0	0.6	5.7	0.3	1.3	0.1	0.0	0.0	92.0	0.6	7.4	0.092	0.502	19.472839	-98.553327

13 CARR: San Martín Texmelucan - Tlaxcala

CLAVE: 00158

RUTA: MEX-117

AÑO: 2016

LUGAR	ESTACION				CLASIFICACION VEHICULAR EN PORCIENTO										COORDENADAS					
	KM	TE	SC	TDPA	M	A	B	C2	C3	T3S2	T3S3	T3S2R4	OTROS	A	B	C	K'	D	LATITUD	LONGITUD
San Martín Texmelucan	0.00	3	1	9729	7.0	83.3	0.4	4.9	0.3	1.5	1.8	0.2	0.6	90.3	0.4	9.3	0.069	0.547	19.287971	-98.422738
San Martín Texmelucan	0.00	3	2	9780	6.0	83.4	0.4	5.5	0.3	1.7	1.9	0.2	0.6	89.4	0.4	10.2	0.072	0.547	19.288124	-98.422646
X. C. San Martín Texmelucan - Ocotoxco (Cuota)	1.65	1	0	21532	7.5	83.6	0.5	6.3	0.4	0.5	1.0	0.1	0.1	91.1	0.5	8.4	0.061	0.501	19.291445	-98.412062
Lim. Edos. Term. Pue. Ppia. Tlax.	2.84																			
T. Der. Tepetitla	3.45	3	1	6926	6.0	86.6	0.3	4.6	0.4	0.9	0.9	0.1	0.2	92.6	0.3	7.1	0.076	0.501	19.293808	-98.404549
T. Der. Tepetitla	3.45	3	2	6965	7.2	84.9	0.3	4.7	0.4	1.1	1.1	0.1	0.2	92.1	0.3	7.6	0.083	0.501	19.293942	-98.404413
San Diego Xocoyucan	7.21	3	0	6568	6.5	84.4	0.2	2.6	0.3	4.5	0.6	0.2	0.7	90.9	0.2	8.9	0.073	0.506	19.307894	-98.369337
T. Der. Panotla	19.72	1	0	7500	3.8	85.4	0.2	4.3	0.4	4.7	0.4	0.1	0.7	89.2	0.2	10.6	0.079	0.557	19.319550	-98.276848
T. Der. Panotla	19.72	3	0	9024	4.6	84.4	0.2	3.9	0.2	5.1	0.6	0.2	0.8	89.0	0.2	10.8	0.067	0.505	19.319541	-98.269838
Totolac	21.38	1	0	9118	4.0	83.4	0.1	3.2	0.2	6.4	0.9	0.4	1.4	87.4	0.1	12.5	0.065	0.542	19.322534	-98.260446
Totolac	21.38	3	0	10917	2.7	83.8	0.1	2.6	0.2	7.8	1.2	0.6	1.0	86.5	0.1	13.4	0.067	0.548	19.329894	-98.250336
Tlaxcala	24.81	1	0	14899	2.6	93.8	0.1	2.2	0.1	0.2	0.8	0.1	0.1	96.4	0.1	3.5	0.075	0.523	19.326548	-98.244369

TLAXCALA

14 CARR: Tetlatlahuca - Santa Ana Chiautempan

CLAVE: 00158

RUTA: MEX-119

AÑO: 2016

LUGAR	ESTACION				CLASIFICACION VEHICULAR EN PORCIENTO											COORDENADAS				
	KM	TE	SC	TDPA	M	A	B	C2	C3	T3S2	T3S3	T3S2R4	OTROS	A	B	C	K'	D	LATITUD	LONGITUD
Tetlatlahuca	0.00																			
San Bartolomé Tenango	2.39	1	0	4501	4.2	86.4	0.1	5.1	0.4	2.4	0.7	0.1	0.6	90.6	0.1	9.3	0.075	0.503	19.246433	-98.296757
San Damián Texoloc	5.50	1	0	4520	3.6	87.6	0.1	4.3	0.4	3.1	0.4	0.1	0.4	91.2	0.1	8.7	0.075	0.503	19.273358	-98.284653
San Damián Texoloc	5.50	3	0	6529	2.8	90.0	0.1	2.9	0.4	2.9	0.5	0.0	0.4	92.8	0.1	7.1	0.072	0.503	19.278209	-98.275281
T. Izq. Cuauhtelulpan	9.63	1	0	10084	1.8	87.5	0.1	3.3	0.3	5.7	0.4	0.1	0.8	89.3	0.1	10.6	0.072	0.503	19.288029	-98.251634
T. Izq. Cuauhtelulpan	9.63	3	0	13930	0.8	85.7	0.1	2.1	0.2	5.7	2.1	0.9	2.4	86.5	0.1	13.4	0.070	0.510	19.292007	-98.249640
T. Der. Puebla	9.94	1	0	13731	1.2	85.8	0.1	2.9	0.1	8.6	0.8	0.4	0.1	87.0	0.1	12.9	0.072	0.521	19.301024	-98.245434
Santa Ana Chiautempan	16.00																			

15 CARR: Tlaxcala - Belem

CLAVE: 29389

RUTA: MEX-119

AÑO: 2016

LUGAR	ESTACION				CLASIFICACION VEHICULAR EN PORCIENTO											COORDENADAS				
	KM	TE	SC	TDPA	M	A	B	C2	C3	T3S2	T3S3	T3S2R4	OTROS	A	B	C	K'	D	LATITUD	LONGITUD
Tlaxcala	0.00																			
T. Der. Ocotlán	3.91	1	1	18258	2.2	94.7	0.0	1.9	0.1	0.2	0.8	0.0	0.1	96.9	0.0	3.1	0.066	0.502	19.321745	-98.210288
T. Der. Ocotlán	3.91	1	2	18423	2.4	94.0	0.0	2.2	0.1	0.2	1.0	0.0	0.1	96.4	0.0	3.6	0.071	0.502	19.321779	-98.210055
X. C. Puebla - Belem	4.55	1	1	24912	2.3	92.1	0.1	2.7	0.3	0.5	1.4	0.3	0.3	94.4	0.1	5.5	0.084	0.542	19.319281	-98.206381
X. C. Puebla - Belem	4.55	1	2	21025	2.2	91.8	0.1	3.0	0.3	0.5	1.5	0.3	0.3	94.0	0.1	5.9	0.068	0.542	19.319270	-98.206176
Santa Ana Chiautempan	5.82	1	1	11249	2.6	92.9	0.1	1.1	0.1	0.6	1.5	0.7	0.4	95.5	0.1	4.4	0.057	0.507	19.316277	-98.201212
Santa Ana Chiautempan	5.82	1	2	10926	2.9	92.2	0.1	1.3	0.1	0.6	1.7	0.7	0.4	95.1	0.1	4.8	0.055	0.507	19.316212	-98.200940
T. Der. Ixcotla	7.19	3	1	10995	4.2	91.0	0.3	1.3	0.1	1.1	1.5	0.1	0.4	95.2	0.3	4.5	0.064	0.519	19.328303	-98.193912
T. Der. Ixcotla	7.19	3	2	10172	4.4	90.5	0.3	1.3	0.1	1.2	1.7	0.1	0.4	94.9	0.3	4.8	0.060	0.519	19.328168	-98.194069
Belem	10.06	1	0	6852	4.4	85.2	0.2	5.2	0.3	3.6	0.5	0.1	0.5	89.6	0.2	10.2	0.074	0.515	19.337690	-98.193257

16 CARR: Villa Alta - T. C. (Puebla - Tlaxcala)

CLAVE: 29566

RUTA: MEX-119

AÑO: 2016

LUGAR	ESTACION				CLASIFICACION VEHICULAR EN PORCIENTO											COORDENADAS				
	KM	TE	SC	TDPA	M	A	B	C2	C3	T3S2	T3S3	T3S2R4	OTROS	A	B	C	K'	D	LATITUD	LONGITUD
T. C. San Martín Texmelucan - Tlaxcala	0.00	3	0	7273	13.6	71.4	0.4	9.2	0.3	3.5	0.5	0.3	0.8	85.0	0.4	14.6	0.069	0.522	19.284866	-98.401730
Nativitas	10.50	3	0	8329	5.3	80.5	0.4	6.6	0.3	5.2	1.0	0.3	0.4	85.8	0.4	13.8	0.070	0.507	19.239139	-98.307186
T. C. Puebla - Tlaxcala	22.05	1	0	7789	3.2	81.6	0.4	8.6	0.3	4.8	0.5	0.3	0.3	84.8	0.4	14.8	0.075	0.504	19.234653	-98.245024

TLAXCALA

17 CARR: Amozoc - Perote (Cuota)

CLAVE: 00030

RUTA: MEX-140D

AÑO: 2016

LUGAR	ESTACION				CLASIFICACION VEHICULAR EN PORCIENTO													COORDENADAS		
	KM	TE	SC	TDPA	M	A	B	C2	C3	T3S2	T3S3	T3S2R4	OTROS	A	B	C	K'	D	LATITUD	LONGITUD
T. C. Puebla - Córdoba (Cuota)	0.00	3	0	9645	0.6	81.9	2.9	5.9	1.3	4.1	1.1	1.3	0.9	82.5	2.9	14.6	0.082	0.507	19.071946	-98.062704
Caseta de Cobro Amozoc	0.68	2	0	10922	0.4	83.3	6.3	3.1	2.3	2.4	0.7	1.2	0.3	83.7	6.3	10.0	0.085	0.500	19.063599	-98.069031
Lim. Edos. Term. Pue. Ppia. Tlax.	20.08																			
X. C. Huamantla - La Venta	25.80	3	0	7974	0.4	81.2	4.7	5.5	1.6	3.8	1.0	1.3	0.5	81.6	4.7	13.7	0.112	0.503	19.235256	-97.887216
Lim. Edos. Term. Tlax. Ppia. Pue.	30.50																			
Lim. Edos. Term. Pue. Ppia. Tlax.	31.26																			
Lim. Edos. Term. Tlax. Ppia. Pue.	31.67																			
Lim. Edos. Term. Pue. Ppia. Tlax.	38.93																			
Caseta de Cobro Cuapiaxtla	40.34	2	0	5861	0.5	84.9	5.2	3.0	2.1	2.2	0.4	1.4	0.3	85.4	5.2	9.4	0.085	0.500	19.310346	-97.797548
Lim. Edos. Term. Tlax. Ppia. Pue.	54.50																			
T. Der. Oriental	61.45	1	0	10156	0.9	75.0	7.0	6.7	1.9	4.2	1.5	1.9	0.9	75.9	7.0	17.1	0.111	0.515	19.414361	-97.645825
T. Der. Oriental	61.45	3	1	4059	1.8	75.4	6.9	6.5	1.9	2.9	1.6	2.0	1.0	77.2	6.9	15.9	0.089	0.528	19.420074	-97.638378
T. Der. Oriental	61.45	3	2	3635	1.5	73.2	7.9	7.3	2.0	3.2	1.8	2.1	1.0	74.7	7.9	17.4	0.078	0.528	19.420242	-97.638272
T. Izq. Teziutlán	62.70	3	0	6001	1.3	71.9	7.7	7.1	2.3	4.7	1.9	2.1	1.0	73.2	7.7	19.1	0.115	0.518	19.427240	-97.628974
Lim. Edos. Term. Pue. Ppia. Ver.	90.36																			
T. C. Lib. de Perote	105.00																			

18 CARR: Libramiento de Tlaxcala (Cuota)

CLAVE:

RUTA: MEX-117D

AÑO: 2016

LUGAR	ESTACION				CLASIFICACION VEHICULAR EN PORCIENTO													COORDENADAS		
	KM	TE	SC	TDPA	M	A	B	C2	C3	T3S2	T3S3	T3S2R4	OTROS	A	B	C	K'	D	LATITUD	LONGITUD
T. C. San Martín Texmelucan - Tlaxcala (Cuota)	0.00	3	1	9840	1.3	92.2	0.6	3.4	0.5	0.8	0.6	0.5	0.1	93.5	0.6	5.9	0.085	0.510	19.317662	-98.256159
T. C. San Martín Texmelucan - Tlaxcala (Cuota)	0.00	3	2	10227	1.3	91.7	0.6	3.8	0.5	0.9	0.6	0.5	0.1	93.0	0.6	6.4	0.084	0.510	19.317600	-98.256075
X. C. Puebla - Tlaxcala	6.50	1	1	9911	1.2	92.0	0.5	3.4	0.5	1.0	0.6	0.6	0.2	93.2	0.5	6.3	0.090	0.507	19.295447	-98.253152
X. C. Puebla - Tlaxcala	6.50	1	2	10212	1.3	91.6	0.6	3.5	0.5	1.1	0.6	0.6	0.2	92.9	0.6	6.5	0.084	0.507	19.295473	-98.253073
X. C. Puebla - Tlaxcala	6.50	3	1	10735	1.8	92.9	0.2	2.5	0.8	1.0	0.6	0.1	0.1	94.7	0.2	5.1	0.085	0.510	19.287998	-98.233738
X. C. Puebla - Tlaxcala	6.50	3	2	11184	1.8	92.5	0.1	2.8	0.9	1.1	0.6	0.1	0.1	94.3	0.1	5.6	0.093	0.510	19.288014	-98.233795
T. C. Puebla - Belén Atzizimitlán	11.00	1	1	9820	1.5	91.6	0.2	4.3	0.7	0.8	0.7	0.1	0.1	93.1	0.2	6.7	0.089	0.514	19.301821	-98.203310
T. C. Puebla - Belén Atzizimitlán	11.00	1	2	10402	1.5	90.8	0.2	4.9	0.8	0.9	0.7	0.1	0.1	92.3	0.2	7.5	0.088	0.514	19.301940	-98.203376

TLAXCALA

19 CARR: Libramiento Norte de la Ciudad de México (Cuota)

CLAVE: 0902

RUTA: MEX-M40D

AÑO: 2016

LUGAR	ESTACION				CLASIFICACION VEHICULAR EN PORCIENTO														COORDENADAS		
	KM	TE	SC	TDPA	M	A	B	C2	C3	T3S2	T3S3	T3S2R4	OTROS	A	B	C	K'	D	LATITUD	LONGITUD	
T. C. Toluca - Palmillas	0.00																				
X. C. Toluca - Palmillas	12.90	1	1	2761	0.3	65.1	2.5	7.2	2.4	16.5	4.2	1.4	0.4	65.4	2.5	32.1	0.082	0.505	19.917845	-99.850548	
X. C. Toluca - Palmillas	12.90	1	2	2815	0.4	64.5	3.7	5.3	3.9	16.1	4.5	1.3	0.3	64.9	3.7	31.4	0.075	0.505	19.917866	-99.850625	
X. C. Toluca - Palmillas	12.90	3	1	2668	0.3	61.9	3.8	7.9	3.6	16.7	3.5	1.6	0.7	62.2	3.8	34.0	0.084	0.507	19.924041	-99.840396	
X. C. Toluca - Palmillas	12.90	3	2	2740	0.3	60.8	4.1	7.6	3.7	17.9	2.9	2.5	0.2	61.1	4.1	34.8	0.077	0.507	19.924113	-99.840381	
C. P. Jilotepec	48.70	1	1	3372	0.2	65.5	3.4	6.2	2.3	15.8	3.6	2.3	0.7	65.7	3.4	30.9	0.096	0.508	19.967113	-99.539813	
C. P. Jilotepec	48.70	1	2	3261	0.2	65.9	2.5	6.2	2.4	15.9	3.8	2.5	0.6	66.1	2.5	31.4	0.075	0.508	19.967113	-99.539813	
C. P. Jilotepec	48.70	3	1	3790	0.1	65.0	3.6	6.4	2.2	16.3	3.9	2.2	0.3	65.1	3.6	31.3	0.089	0.514	19.978512	-99.526327	
C. P. Jilotepec	48.70	3	2	4011	0.1	68.2	3.2	6.4	1.8	14.7	2.7	2.6	0.3	68.3	3.2	28.5	0.071	0.514	19.978512	-99.526327	
X. C. México - Querétaro	54.00	3	1	6355	0.1	64.7	4.0	7.0	2.4	14.4	3.6	3.1	0.7	64.8	4.0	31.2	0.084	0.501	20.002660	-99.484090	
X. C. México - Querétaro	54.00	3	2	6380	0.1	66.1	4.4	5.7	2.8	14.3	4.4	2.0	0.2	66.2	4.4	29.4	0.088	0.501	20.002660	-99.484090	
Caseta de Cobro Querétaro	55.00	3	1	7397	0.2	55.1	2.4	5.3	6.7	17.0	4.1	7.5	1.7	55.3	2.4	42.3	0.067	0.500	19.996122	-99.490416	
Caseta de Cobro Querétaro	55.00	3	2	7397	0.2	55.1	2.4	5.3	6.7	17.0	4.1	7.5	1.7	55.3	2.4	42.3	0.067	0.500	19.996122	-99.490416	
Lim. Edos. Term. Mex. Ppia. Hgo.	60.72																				
X. C. Ent. Tepeji del Río - Tlahuelilpan	79.00	1	1	6020	0.1	64.6	2.7	5.7	2.8	15.7	5.8	2.2	0.4	64.7	2.7	32.6	0.072	0.502	20.097399	-99.290412	
X. C. Ent. Tepeji del Río - Tlahuelilpan	79.00	1	2	5980	0.2	63.5	2.0	6.0	3.0	17.4	5.3	2.2	0.4	63.7	2.0	34.3	0.078	0.502	20.097399	-99.290403	
X. C. Ent. Tepeji del Río - Tlahuelilpan	79.00	3	1	7212	0.1	69.0	1.3	5.3	1.2	14.5	5.6	2.7	0.3	69.1	1.3	29.6	0.073	0.500	20.096692	-99.275906	
X. C. Ent. Tepeji del Río - Tlahuelilpan	79.00	3	2	7201	0.1	69.4	2.3	5.0	1.2	15.5	5.0	1.2	0.3	69.5	2.3	28.2	0.075	0.500	20.096692	-99.275906	
X. C. Los Reyes - El Tephé	86.40	1	1	7122	0.1	65.4	4.7	7.0	2.4	10.3	4.7	4.7	0.7	65.5	4.7	29.8	0.077	0.509	20.069444	-99.226853	
X. C. Los Reyes - El Tephé	86.40	1	2	7381	0.1	65.7	4.5	7.4	3.6	11.4	4.8	2.2	0.3	65.8	4.5	29.7	0.074	0.509	20.069444	-99.226853	
X. C. Los Reyes - El Tephé	86.40	3	1	7438	0.1	65.5	4.7	7.1	3.5	10.8	4.6	3.1	0.6	65.6	4.7	29.7	0.076	0.503	20.064092	-99.211119	
X. C. Los Reyes - El Tephé	86.40	3	2	7516	0.1	65.0	5.4	7.0	3.8	11.2	4.1	2.8	0.6	65.1	5.4	29.5	0.089	0.503	20.064092	-99.211119	
Lim. Edos. Term. Hgo. Ppia. Mex.	95.75																				
X. C. (Los Reyes - El Tephé) - Tianguistongo	108.60	1	1	7252	0.1	66.0	3.6	5.2	3.6	15.0	3.3	2.4	0.8	66.1	3.6	30.3	0.074	0.525	19.957798	-99.064466	
X. C. (Los Reyes - El Tephé) - Tianguistongo	108.60	1	2	7073	0.1	61.3	3.4	8.3	3.7	16.6	3.8	2.5	0.3	61.4	3.4	35.2	0.076	0.525	19.957798	-99.064466	
X. C. (Los Reyes - El Tephé) - Tianguistongo	108.60	3	1	7814	0.0	66.0	3.5	9.2	2.0	12.3	3.0	3.3	0.7	66.0	3.5	30.5	0.071	0.506	19.955845	-99.041987	
X. C. (Los Reyes - El Tephé) - Tianguistongo	108.60	3	2	7613	0.1	69.2	3.9	8.0	2.3	10.7	3.4	2.2	0.2	69.3	3.9	26.8	0.073	0.506	19.955845	-99.041987	
Lim. Edos. Term. Mex. Ppia. Hgo.	115.89																				
X. C. México - Pachuca	127.30	1	1	7403	0.1	66.2	3.8	6.6	4.0	12.3	3.6	2.8	0.6	66.3	3.8	29.9	0.072	0.510	19.931433	-98.898961	
X. C. México - Pachuca	127.30	1	2	7118	0.1	62.9	4.3	8.1	3.8	12.9	4.8	2.7	0.4	63.0	4.3	32.7	0.072	0.510	19.931433	-98.898961	
X. C. México - Pachuca	127.30	3	1	6298	0.1	65.8	3.4	8.2	2.5	14.0	3.9	1.7	0.4	65.9	3.4	30.7	0.066	0.549	19.927106	-98.880675	
X. C. México - Pachuca	127.30	3	2	6152	0.2	64.3	4.1	6.9	4.3	12.0	5.3	2.3	0.6	64.5	4.1	31.4	0.073	0.549	19.927106	-98.880675	
Lim. Edos. Term. Hgo. Ppia. Mex.	143.98																				
X. C. Venta De Carpio - T. C. (Pachuca - Tuxpan)	151.11	1	1	6900	0.1	64.2	3.3	8.4	2.8	12.4	4.4	3.8	0.6	64.3	3.3	32.4	0.074	0.511	19.836670	-98.703985	

TLAXCALA

19 CARR: Libramiento Norte de la Ciudad de México (Cuota)

CLAVE: 0902

RUTA: MEX-M40D

AÑO: 2016

LUGAR	ESTACION				CLASIFICACION VEHICULAR EN PORCIENTO														COORDENADAS	
	KM	TE	SC	TDPA	M	A	B	C2	C3	T3S2	T3S3	T3S2R4	OTROS	A	B	C	K'	D	LATITUD	LONGITUD
X. C. Venta De Carpio - T. C. (Pachuca - Tuxpan)	151.11	1	2	6613	0.1	72.2	3.0	6.6	2.6	10.2	3.1	1.6	0.6	72.3	3.0	24.7	0.096	0.511	19.836814	-98.703798
X. C. Venta De Carpio - T. C. (Pachuca - Tuxpan)	151.11	3	1	6955	0.1	69.4	3.0	8.3	2.2	12.1	3.3	1.4	0.2	69.5	3.0	27.5	0.072	0.561	19.828875	-98.694418
X. C. Venta De Carpio - T. C. (Pachuca - Tuxpan)	151.11	3	2	6747	0.1	72.8	3.7	6.6	1.9	10.3	3.2	1.1	0.3	72.9	3.7	23.4	0.096	0.561	19.829072	-98.694246
X. C. Ent. Tolman - Cd. Sahagún	162.55	1	1	6624	0.1	67.6	2.1	4.9	2.0	16.2	5.1	1.7	0.3	67.7	2.1	30.2	0.072	0.508	19.759225	-98.631106
X. C. Ent. Tolman - Cd. Sahagún	162.55	1	2	6415	0.2	65.9	2.4	5.3	2.3	16.6	5.1	1.9	0.3	66.1	2.4	31.5	0.079	0.508	19.759319	-98.630924
X. C. Ent. Tolman - Cd. Sahagún	162.55	3	1	6625	0.1	64.2	2.5	5.5	2.2	16.7	5.7	2.5	0.6	64.3	2.5	33.2	0.074	0.560	19.749985	-98.626083
X. C. Ent. Tolman - Cd. Sahagún	162.55	3	2	6477	0.1	65.1	3.1	5.1	2.4	16.8	5.4	1.7	0.3	65.2	3.1	31.7	0.078	0.560	19.750053	-98.625800
Lim. Edos. Term. Mex. Ppia. Hgo.	166.53																			
X. C. Calpulallpan - El Ocote	180.39	1	1	7425	0.1	67.8	3.8	7.2	3.5	11.2	3.7	2.2	0.5	67.9	3.8	28.3	0.077	0.508	19.623767	-98.551627
X. C. Calpulallpan - El Ocote	180.39	1	2	7675	0.1	66.3	3.6	8.2	3.6	12.4	3.6	1.7	0.5	66.4	3.6	30.0	0.093	0.508	19.623830	-98.551502
X. C. Calpulallpan - El Ocote	180.39	3	1	7663	0.1	68.5	3.9	6.1	3.5	12.7	3.6	1.4	0.2	68.6	3.9	27.5	0.078	0.503	19.614939	-98.544217
X. C. Calpulallpan - El Ocote	180.39	3	2	7573	0.0	69.2	3.8	8.6	2.5	10.9	3.3	1.3	0.4	69.2	3.8	27.0	0.076	0.503	19.614939	-98.544217
Lim. Edos. Term. Hgo. Ppia. Tlax.	180.98																			
X. C. Los Reyes - Zacatepec	196.70	1	1	7622	0.6	58.5	3.7	6.1	3.8	15.1	3.7	6.8	1.7	59.1	3.7	37.2	0.083	0.504	19.520256	-98.472955
X. C. Los Reyes - Zacatepec	196.70	1	2	7513	0.9	52.6	4.0	6.8	4.1	17.3	4.4	8.0	1.9	53.5	4.0	42.5	0.083	0.504	19.520226	-98.472905
X. C. Los Reyes - Zacatepec	196.70	3	1	6611	2.1	56.7	4.9	7.4	3.1	14.5	3.6	5.8	1.9	58.8	4.9	36.3	0.084	0.503	19.502977	-98.465433
X. C. Los Reyes - Zacatepec	196.70	3	2	6544	0.9	52.3	5.5	7.8	3.5	16.9	4.3	6.6	2.2	53.2	5.5	41.3	0.075	0.503	19.502958	-98.465504
X. C. San Martín Texmelucan - Tlaxcala - El Molinito	220.95	1	1	6236	1.2	58.3	4.2	5.9	3.0	15.9	3.4	6.0	2.1	59.5	4.2	36.3	0.086	0.522	19.308314	-98.408434
X. C. San Martín Texmelucan - Tlaxcala - El Molinito	220.95	1	2	6807	1.0	54.1	4.9	7.0	3.3	16.5	4.0	6.8	2.4	55.1	4.9	40.0	0.078	0.522	19.308325	-98.408548
X. C. San Martín Texmelucan - Tlaxcala - El Molinito	220.95	3	1	8358	0.9	63.2	5.6	6.3	2.4	12.2	2.7	5.3	1.4	64.1	5.6	30.3	0.084	0.509	19.287935	-98.410588
X. C. San Martín Texmelucan - Tlaxcala - El Molinito	220.95	3	2	8657	0.8	58.3	6.4	7.3	2.9	14.2	3.0	5.5	1.6	59.1	6.4	34.5	0.080	0.509	19.287926	-98.410719
Caseta de Cobro San Martín Texmelucan	222.00	1	1	7170	0.2	55.2	2.7	5.7	5.8	18.1	3.3	7.6	1.4	55.4	2.7	41.9	0.067	0.500	19.301905	-98.409630
Caseta de Cobro San Martín Texmelucan	222.00	1	2	7170	0.2	55.2	2.7	5.7	5.8	18.1	3.3	7.6	1.4	55.4	2.7	41.9	0.067	0.500	19.301905	-98.409630
T. C. San Martín Texmelucan - Ocotoxco (Cuota)	222.44																			
T. C. México - Puebla (Cuota)	226.73	1	1	7814	1.2	60.3	4.5	6.4	3.2	13.2	3.8	6.4	1.0	61.5	4.5	34.0	0.059	0.505	19.269894	-98.420215
T. C. México - Puebla (Cuota)	226.73	1	2	7980	0.8	56.9	5.3	6.8	3.7	14.7	4.0	6.8	1.0	57.7	5.3	37.0	0.071	0.505	19.269812	-98.420133

20 CARR: México - Puebla (Cuota)

CLAVE: 00450

RUTA: MEX-150D

AÑO: 2016

LUGAR	ESTACION				CLASIFICACION VEHICULAR EN PORCIENTO														COORDENADAS	
	KM	TE	SC	TDPA	M	A	B	C2	C3	T3S2	T3S3	T3S2R4	OTROS	A	B	C	K'	D	LATITUD	LONGITUD
México	0.00																			
Ent. Concordia	17.00	3	1	64088	1.2	84.9	3.5	4.1	0.9	2.4	2.3	0.5	0.2	86.1	3.5	10.4	0.058	0.513	19.355718	-98.991724
Ent. Concordia	17.00	3	2	60755	1.3	83.1	3.9	4.4	1.0	2.9	2.7	0.5	0.2	84.4	3.9	11.7	0.058	0.513	19.355777	-98.991659

TLAXCALA

20 CARR: México - Puebla (Cuota)

CLAVE: 00450

RUTA: MEX-150D

AÑO: 2016

LUGAR	ESTACION				CLASIFICACION VEHICULAR EN PORCIENTO										COORDENADAS					
	KM	TE	SC	TDPA	M	A	B	C2	C3	T3S2	T3S3	T3S2R4	OTROS	A	B	C	K'	D	LATITUD	LONGITUD
Lim. Edos. Term. D. F. Ppia. Mex.	17.51																			
Av. Las Torres (Eje 6)	19.27	1	1	70874	1.8	86.8	1.7	2.8	1.0	1.9	2.0	1.0	1.0	88.6	1.7	9.7	0.055	0.507	19.346851	-98.982480
Av. Las Torres (Eje 6)	19.27	1	2	73101	1.8	85.4	2.0	3.0	1.1	2.1	2.2	1.2	1.2	87.2	2.0	10.8	0.057	0.507	19.346884	-98.982394
Av. Las Torres (Eje 6)	19.27	3	1	74920	1.4	87.7	2.0	4.0	1.0	1.3	1.4	0.6	0.6	89.1	2.0	8.9	0.067	0.510	19.340372	-98.976713
Av. Las Torres (Eje 6)	19.27	3	2	81574	1.4	86.3	2.2	4.7	1.2	1.4	1.5	0.7	0.6	87.7	2.2	10.1	0.054	0.510	19.340405	-98.976626
Eje 10 Sur	22.80	1	1	88984	0.1	71.8	4.2	8.0	3.5	5.4	3.3	1.7	2.0	71.9	4.2	23.9	0.052	0.503	19.329116	-98.964908
Eje 10 Sur	22.80	1	2	89220	0.1	68.8	4.5	9.0	4.0	6.0	3.5	1.9	2.2	68.9	4.5	26.6	0.052	0.503	19.329165	-98.964843
Eje 10 Sur	22.80	3	1	75309	0.6	71.1	4.4	7.9	3.6	5.5	3.1	1.8	2.0	71.7	4.4	23.9	0.051	0.506	19.314783	-98.948073
Eje 10 Sur	22.80	3	2	78258	0.5	68.2	4.7	8.6	4.0	6.2	3.6	1.9	2.3	68.7	4.7	26.6	0.053	0.506	19.314958	-98.947927
X. C. Santa Bárbara - Izúcar de Matamoros	32.14	1	1	52092	0.7	71.2	4.3	7.4	3.7	5.6	3.4	1.7	2.0	71.9	4.3	23.8	0.055	0.502	19.292621	-98.887973
X. C. Santa Bárbara - Izúcar de Matamoros	32.14	1	2	48286	0.7	69.0	4.6	8.3	4.0	5.9	3.4	1.9	2.2	69.7	4.6	25.7	0.056	0.502	19.292751	-98.887953
X. C. Santa Bárbara - Izúcar de Matamoros	32.14	3	1	13143	1.0	83.2	3.3	5.8	1.1	2.9	1.2	1.0	0.5	84.2	3.3	12.5	0.094	0.524	19.295041	-98.875476
X. C. Santa Bárbara - Izúcar de Matamoros	32.14	3	2	13400	0.6	82.4	3.6	6.1	1.2	3.1	1.3	1.2	0.5	83.0	3.6	13.4	0.106	0.524	19.295062	-98.875479
Caseta de Cobro San Marcos	33.30	2	1	16094	0.3	74.0	7.9	3.9	4.8	6.2	0.4	2.2	0.3	74.3	7.9	17.8	0.068	0.500	19.296362	-98.870728
Caseta de Cobro San Marcos	33.30	2	2	16094	0.3	74.0	7.9	3.9	4.8	6.2	0.4	2.2	0.3	74.3	7.9	17.8	0.068	0.500	19.296362	-98.870728
T. Izq. Río Frío	63.79	3	1	17778	0.5	80.7	3.0	6.3	2.4	4.0	1.0	1.4	0.7	81.2	3.0	15.8	0.077	0.532	19.351342	-98.665570
T. Izq. Río Frío	63.79	3	2	16122	0.6	78.8	3.4	6.7	2.6	4.4	1.1	1.6	0.8	79.4	3.4	17.2	0.097	0.532	19.351357	-98.665596
Lim. Edos. Term. Mex. Ppia. Pue.	65.46																			
T. Izq. Tlaxcala	90.61	1	1	17573	1.2	73.6	7.9	8.0	2.4	4.4	0.5	1.6	0.4	74.8	7.9	17.3	0.079	0.504	19.273278	-98.434400
T. Izq. Tlaxcala	90.61	1	2	17278	1.3	70.8	8.9	8.7	2.6	5.0	0.5	1.8	0.4	72.1	8.9	19.0	0.083	0.504	19.273369	-98.434351
T. Izq. Tlaxcala	90.61	3	1	23352	0.7	69.1	5.8	8.5	2.7	8.0	1.5	3.3	0.4	69.8	5.8	24.4	0.072	0.528	19.261795	-98.417522
T. Izq. Tlaxcala	90.61	3	2	20904	1.0	66.3	6.4	8.9	2.9	8.8	1.6	3.7	0.4	67.3	6.4	26.3	0.077	0.528	19.261734	-98.417036
Caseta de Cobro San Martín Texmelucan	91.17	2	1	23725	0.4	70.8	7.3	3.9	4.4	8.1	1.0	3.6	0.5	71.2	7.3	21.5	0.068	0.500	19.241098	-98.385681
Caseta de Cobro San Martín Texmelucan	91.17	2	2	23725	0.4	70.8	7.3	3.9	4.4	8.1	1.0	3.6	0.5	71.2	7.3	21.5	0.068	0.500	19.241098	-98.385681
Lim. Edos. Term. Pue. Ppia. Tlax.	99.11																			
T. Der. Aeropuerto Internacional De Puebla	101.10	3	1	26955	0.8	74.6	5.3	5.5	2.7	6.1	1.4	2.6	1.0	75.4	5.3	19.3	0.067	0.504	19.208132	-98.348055
T. Der. Aeropuerto Internacional De Puebla	101.10	3	2	27337	0.9	71.9	5.5	6.5	3.0	6.8	1.5	2.8	1.1	72.8	5.5	21.7	0.073	0.504	19.208074	-98.348160
X. C. Xoxtla - Huactzinco	107.98	1	1	28719	1.1	73.0	5.4	6.2	2.9	6.4	1.5	2.6	0.9	74.1	5.4	20.5	0.068	0.506	19.179761	-98.313770
X. C. Xoxtla - Huactzinco	107.98	1	2	28062	0.7	70.7	6.1	6.8	3.0	7.1	1.7	2.9	1.0	71.4	6.1	22.5	0.070	0.506	19.179873	-98.313655
X. C. Xoxtla - Huactzinco	107.98	3	1	33523	1.2	74.5	4.1	8.1	2.1	5.4	1.6	2.1	0.9	75.7	4.1	20.2	0.069	0.508	19.170745	-98.302845
X. C. Xoxtla - Huactzinco	107.98	3	2	32417	1.2	71.5	4.5	9.7	2.3	5.7	1.8	2.3	1.0	72.7	4.5	22.8	0.070	0.508	19.170760	-98.302465
Lim. Edos. Term. Tlax. Ppia. Pue.	108.00																			
Anillo Periferico Poniente De Puebla (Central)	114.00	3	1	22476	0.8	74.2	5.9	4.8	3.3	7.0	0.7	2.7	0.6	75.0	5.9	19.1	0.061	0.522	19.126756	-98.263698
Anillo Periferico Poniente De Puebla (Lateral)	114.00	3	1	25944	0.6	83.5	3.2	6.1	2.9	1.6	0.5	0.8	0.8	84.1	3.2	12.7	0.102	0.523	19.127117	-98.263420

TLAXCALA

20 CARR : México - Puebla (Cuota)

CLAVE: 00450

RUTA: MEX-150D

AÑO: 2016

LUGAR	ESTACION				CLASIFICACION VEHICULAR EN PORCIENTO										COORDENADAS					
	KM	TE	SC	TDPA	M	A	B	C2	C3	T3S2	T3S3	T3S2R4	OTROS	A	B	C	K'	D	LATITUD	LONGITUD
Anillo Periferico Poniente De Puebla (Lateral)	114.00	3	2	29366	0.4	82.3	3.4	7.0	3.1	1.7	0.5	0.8	0.8	82.7	3.4	13.9	0.106	0.523	19.126797	-98.263627
Anillo Periferico Poniente De Puebla (Central)	114.00	3	2	20601	0.9	71.3	6.3	5.4	3.8	7.7	0.8	3.2	0.6	72.2	6.3	21.5	0.072	0.522	19.126890	-98.263419
Boulevard Hermanos Serdán	120.46	3	1	52154	0.7	79.6	5.0	5.9	3.4	3.2	0.5	1.5	0.2	80.3	5.0	14.7	0.065	0.503	19.094829	-98.226449
Boulevard Hermanos Serdán	120.46	3	2	51437	0.7	77.2	5.7	6.9	3.8	3.4	0.5	1.6	0.2	77.9	5.7	16.4	0.068	0.503	19.094829	-98.226449
X. C. Puebla - Tlaxcala (Lateral)	123.00	3	1	28747	0.7	85.1	7.2	3.5	1.7	1.0	0.5	0.1	0.2	85.8	7.2	7.0	0.072	0.549	19.085248	-98.196039
X. C. Puebla - Tlaxcala (Central)	123.00	3	1	31018	0.7	76.6	3.9	7.4	3.4	4.5	0.9	2.3	0.3	77.3	3.9	18.8	0.071	0.529	19.086118	-98.200375
X. C. Puebla - Tlaxcala (Central)	123.00	3	2	43373	0.6	75.4	4.1	7.6	3.7	5.0	1.0	2.3	0.3	76.0	4.1	19.9	0.073	0.529	19.086118	-98.200375
X. C. Puebla - Tlaxcala (Lateral)	123.00	3	2	23525	0.8	83.8	8.0	3.7	1.8	1.1	0.5	0.1	0.2	84.6	8.0	7.4	0.091	0.549	19.085373	-98.196001
T. C. Puebla - Tlaxcala	124.90																			

21 CARR : San Martin Texmelucan - Tlaxcala - El Molinito (Cuota)

CLAVE: 00212

RUTA: MEX-117D

AÑO: 2016

LUGAR	ESTACION				CLASIFICACION VEHICULAR EN PORCIENTO										COORDENADAS					
	KM	TE	SC	TDPA	M	A	B	C2	C3	T3S2	T3S3	T3S2R4	OTROS	A	B	C	K'	D	LATITUD	LONGITUD
T. C. México - Puebla (Cuota)	0.00																			
X. C. San Martín Texmelucan - Tlaxcala	1.80	1	0	3856	4.7	78.5	2.4	8.2	1.1	3.7	0.7	0.5	0.2	83.2	2.4	14.4	0.120	0.551	19.290008	-98.419461
Lim. Edos. Term. Pue. Ppia. Tlax.	4.05																			
Caseta de Cobro San Martín Texmelucan	5.45	2	1	2928	0.5	78.8	8.7	4.0	1.7	3.3	1.2	1.5	0.3	79.3	8.7	12.0	0.088	0.500	19.301567	-98.404045
Caseta de Cobro San Martín Texmelucan	5.45	2	2	2928	0.5	78.8	8.7	4.0	1.7	3.3	1.2	1.5	0.3	79.3	8.7	12.0	0.088	0.500	19.301567	-98.404045
X. C. San Martín Texmelucan - Tlaxcala (Trébol)	24.75	1	1	18531	1.4	90.6	1.8	3.5	0.4	1.0	0.6	0.5	0.2	92.0	1.8	6.2	0.094	0.513	19.325883	-98.249535
X. C. San Martín Texmelucan - Tlaxcala (Trébol)	24.75	1	2	17589	1.2	90.0	1.9	4.2	0.4	1.0	0.6	0.5	0.2	91.2	1.9	6.9	0.087	0.513	19.325820	-98.249457
X. C. San Martín Texmelucan - Tlaxcala (Trébol)	24.75	3	1	18073	1.1	87.8	2.0	6.7	0.5	0.8	0.4	0.6	0.1	88.9	2.0	9.1	0.090	0.531	19.331595	-98.239915
X. C. San Martín Texmelucan - Tlaxcala (Trébol)	24.75	3	2	15969	1.1	87.4	2.3	6.8	0.5	0.8	0.4	0.6	0.1	88.5	2.3	9.2	0.087	0.531	19.331597	-98.239918
T. Izq. Tizatlán	29.00	3	1	16111	0.8	85.9	2.0	9.1	0.6	0.7	0.4	0.4	0.1	86.7	2.0	11.3	0.092	0.501	19.335715	-98.220064
T. Izq. Tizatlán	29.00	3	2	16070	0.8	84.9	2.2	9.7	0.6	0.9	0.4	0.4	0.1	85.7	2.2	12.1	0.081	0.501	19.335653	-98.220045
T. Der. San Pablo Apetatitlán	31.65	3	1	34296	0.8	88.6	1.1	6.1	0.7	1.3	0.8	0.4	0.2	89.4	1.1	9.5	0.073	0.509	19.347201	-98.194946
T. Der. San Pablo Apetatitlán	31.65	3	2	35556	0.8	87.4	1.2	6.7	0.9	1.4	1.0	0.4	0.2	88.2	1.2	10.6	0.077	0.509	19.347201	-98.194945
Ocotoxco	35.20	1	1	30596	0.9	86.9	1.4	6.4	1.1	1.8	0.8	0.5	0.2	87.8	1.4	10.8	0.075	0.505	19.385336	-98.177975
Ocotoxco	35.20	1	2	29980	0.9	86.2	1.5	6.7	1.2	1.9	0.9	0.5	0.2	87.1	1.5	11.4	0.075	0.505	19.385093	-98.178305

TLAXCALA

22 CARR: Tlaxco - Tejocotal (Cuota)

CLAVE: 00209

RUTA: MEX-119D

AÑO: 2016

LUGAR	ESTACION				CLASIFICACION VEHICULAR EN PORCIENTO														COORDENADAS	
	KM	TE	SC	TDPA	M	A	B	C2	C3	T3S2	T3S3	T3S2R4	OTROS	A	B	C	K'	D	LATITUD	LONGITUD
T.C. Apan - Tlaxco	23.00	3	0	3340	0.4	78.2	6.0	9.3	1.8	2.0	1.0	1.1	0.2	78.6	6.0	15.4	0.128	0.540	19.608514	-98.156734
Lim. Edos. Term. Tlax. Ppia. Pue.	30.70																			
Ent. Chignahuapan	56.20	3	0	2440	0.6	76.7	4.7	9.8	2.5	2.1	1.3	2.0	0.3	77.3	4.7	18.0	0.110	0.501	19.877531	-98.061897
Lim. Edos. Term. Pue. Ppia. Hgo.	84.80																			
T. C. Apizaco - Tejocotal	85.60																			

23 CARR: Libramiento de Ocotlán

CLAVE: 29567

RUTA: TLAX

AÑO: 2016

LUGAR	ESTACION				CLASIFICACION VEHICULAR EN PORCIENTO														COORDENADAS	
	KM	TE	SC	TDPA	M	A	B	C2	C3	T3S2	T3S3	T3S2R4	OTROS	A	B	C	K'	D	LATITUD	LONGITUD
T. C. Tlaxcala - Belem	0.00	3	1	14388	1.4	91.3	0.1	1.2	0.1	1.2	3.7	0.3	0.7	92.7	0.1	7.2	0.073	0.519	19.319157	-98.209738
T. C. Tlaxcala - Belem	0.00	3	2	13356	1.8	90.1	0.1	1.4	0.1	1.3	4.1	0.3	0.8	91.9	0.1	8.0	0.067	0.519	19.319157	-98.209741
T. C. Tlaxcala - Belem	5.50																			

24 CARR: Ramal a Altzayanca de Hidalgo

CLAVE: 29562

RUTA: TLAX

AÑO: 2016

LUGAR	ESTACION				CLASIFICACION VEHICULAR EN PORCIENTO														COORDENADAS	
	KM	TE	SC	TDPA	M	A	B	C2	C3	T3S2	T3S3	T3S2R4	OTROS	A	B	C	K'	D	LATITUD	LONGITUD
T. C. Los Reyes - Zacatepec	0.00	3	0	2910	2.7	83.6	0.3	11.1	0.5	1.5	0.1	0.1	0.1	86.3	0.3	13.4	0.083	0.503	19.319141	-97.846094
Xicoténcatl	6.50	3	0	2254	3.7	85.0	0.2	8.8	0.3	1.7	0.2	0.0	0.1	88.7	0.2	11.1	0.069	0.501	19.356799	-97.832009
Altzayanca de Hidalgo	15.00	1	0	2068	6.8	83.1	0.1	8.3	0.3	1.2	0.1	0.0	0.1	89.9	0.1	10.0	0.083	0.505	19.422789	-97.804260

25 CARR: Ramal a San Pedro Ecatepec

CLAVE: 29561

RUTA: TLAX

AÑO: 2016

LUGAR	ESTACION				CLASIFICACION VEHICULAR EN PORCIENTO														COORDENADAS	
	KM	TE	SC	TDPA	M	A	B	C2	C3	T3S2	T3S3	T3S2R4	OTROS	A	B	C	K'	D	LATITUD	LONGITUD
T. C. Apizaco - Tejocotal	0.00	3	0	1861	3.0	84.4	0.1	10.1	0.6	1.4	0.2	0.1	0.1	87.4	0.1	12.5	0.083	0.503	19.514517	-98.119612
San Pedro Ecatepec	4.60	1	0	1877	3.7	84.4	0.1	9.1	0.8	1.4	0.4	0.0	0.1	88.1	0.1	11.8	0.079	0.503	19.518942	-98.153678

26 CARR: Ramal a Xalostoc

CLAVE: 29563

RUTA: TLAX

AÑO: 2016

LUGAR	ESTACION				CLASIFICACION VEHICULAR EN PORCIENTO														COORDENADAS	
	KM	TE	SC	TDPA	M	A	B	C2	C3	T3S2	T3S3	T3S2R4	OTROS	A	B	C	K'	D	LATITUD	LONGITUD
T. C. Los Reyes - Zacatepec	0.00	3	0	9374	1.4	83.8	0.1	4.3	0.5	7.2	1.3	0.6	0.8	85.2	0.1	14.7	0.059	0.504	19.395416	-98.058669

TLAXCALA

26 CARR: Ramal a Xalostoc

CLAVE: 29563

RUTA: TLAX

AÑO: 2016

LUGAR	ESTACION				CLASIFICACION VEHICULAR EN PORCIENTO														COORDENADAS	
	KM	TE	SC	TDPA	M	A	B	C2	C3	T3S2	T3S3	T3S2R4	OTROS	A	B	C	K'	D	LATITUD	LONGITUD
Xalostoc	2.50	1	0	10008	2.8	86.0	0.1	3.7	0.3	5.4	0.6	0.2	0.9	88.8	0.1	11.1	0.065	0.509	19.400339	-98.051782

27 CARR: Xalostoc - Terrenate

CLAVE: 29390

RUTA: TLAX

AÑO: 2016

LUGAR	ESTACION				CLASIFICACION VEHICULAR EN PORCIENTO														COORDENADAS	
	KM	TE	SC	TDPA	M	A	B	C2	C3	T3S2	T3S3	T3S2R4	OTROS	A	B	C	K'	D	LATITUD	LONGITUD
Xalostoc	0.00	3	0	3746	2.9	87.0	0.4	5.8	1.1	2.1	0.3	0.2	0.2	89.9	0.4	9.7	0.071	0.500	19.415952	-98.033864
San Francisco Teometitla	7.10	3	0	1971	2.1	89.3	0.5	6.3	0.5	1.0	0.2	0.0	0.1	91.4	0.5	8.1	0.080	0.500	19.450929	-97.988357
T. C. Huamantla - Terrenate	17.50	1	0	1769	2.6	89.9	0.2	5.3	0.5	1.1	0.2	0.0	0.2	92.5	0.2	7.3	0.088	0.502	19.467421	-97.931205

28 CARR: Puebla - Tlaxcala (Cuota)

CLAVE:

RUTA: PUE-D

AÑO: 2016

LUGAR	ESTACION				CLASIFICACION VEHICULAR EN PORCIENTO														COORDENADAS	
	KM	TE	SC	TDPA	M	A	B	C2	C3	T3S2	T3S3	T3S2R4	OTROS	A	B	C	K'	D	LATITUD	LONGITUD
Anillo Periferico Poniente De Puebla	0.00	3	0	7675	0.6	87.2	1.5	5.0	0.6	2.7	0.7	1.3	0.4	87.8	1.5	10.7	0.082	0.532	19.148028	-98.269071
T Der. Zacatelco	8.00	1	0	7886	0.6	88.4	1.5	4.1	0.6	2.7	0.5	1.3	0.3	89.0	1.5	9.5	0.083	0.534	19.202213	-98.261899
T Der. Zacatelco	8.00	3	0	7793	0.5	88.2	1.5	4.4	0.6	2.6	0.6	1.3	0.3	88.7	1.5	9.8	0.082	0.536	19.229377	-98.271952
Lib. de Tlaxcala (Cuota)	17.80	1	0	7827	0.6	87.8	1.6	4.6	0.6	2.7	0.6	1.2	0.3	88.4	1.6	10.0	0.082	0.538	19.276522	-98.252067

29 CARR: Acocotla - Vicente Guerrero

CLAVE: 29560

RUTA: MEX-TLAX

AÑO: 2016

LUGAR	ESTACION				CLASIFICACION VEHICULAR EN PORCIENTO														COORDENADAS	
	KM	TE	SC	TDPA	M	A	B	C2	C3	T3S2	T3S3	T3S2R4	OTROS	A	B	C	K'	D	LATITUD	LONGITUD
T. C. Los Reyes - Zacatepec	0.00	3	0	1790	3.0	88.5	0.3	5.6	0.4	1.8	0.3	0.0	0.1	91.5	0.3	8.2	0.082	0.504	19.371218	-98.028591
T. C. Puebla - Belem	37.70	1	0	5754	2.3	80.9	3.4	6.5	0.6	3.8	1.1	0.7	0.7	83.2	3.4	13.4	0.077	0.500	19.113046	-98.175989

30 CARR: Apizaco - Emiliano Zapata

CLAVE: 29033

RUTA: TLAX-MEX-136

AÑO: 2016

LUGAR	ESTACION				CLASIFICACION VEHICULAR EN PORCIENTO														COORDENADAS	
	KM	TE	SC	TDPA	M	A	B	C2	C3	T3S2	T3S3	T3S2R4	OTROS	A	B	C	K'	D	LATITUD	LONGITUD
Apizaco	0.00	3	0	8526	5.9	79.0	0.2	6.1	0.3	5.5	1.0	0.4	1.6	84.9	0.2	14.9	0.059	0.504	19.417628	-98.131587
Capula	16.00	1	0	3145	3.6	89.5	0.2	4.7	0.4	1.4	0.1	0.0	0.1	93.1	0.2	6.7	0.075	0.509	19.529627	-98.041184
Emiliano Zapata	37.00	1	0	1184	1.9	91.0	0.3	4.4	1.3	1.0	0.1	0.0	0.0	92.9	0.3	6.8	0.132	0.511	19.551407	-97.917241

TLAXCALA

31 CARR: Calpulalpan - El Ocote

CLAVE: 00054

RUTA: MEX-HGO

AÑO: 2016

LUGAR	ESTACION				CLASIFICACION VEHICULAR EN PORCIENTO										COORDENADAS					
	KM	TE	SC	TDPA	M	A	B	C2	C3	T3S2	T3S3	T3S2R4	OTROS	A	B	C	K'	D	LATITUD	LONGITUD
Calpulalpan	0.00	3	0	8999	1.0	73.9	2.0	7.8	2.3	8.2	2.1	1.7	1.0	74.9	2.0	23.1	0.062	0.512	19.600825	-98.567609
X. C. Arco Norte de La Ciudad de México	4.00	3	0	7656	1.1	80.7	1.9	6.1	2.3	4.5	1.0	1.4	1.0	81.8	1.9	16.3	0.101	0.508	19.630945	-98.538582
Lim. Edos. Term. Tlax. Ppia. Hgo.	5.00																			
Apan	19.58	3	1	4745	1.4	89.5	1.2	5.3	1.2	0.9	0.4	0.0	0.1	90.9	1.2	7.9	0.081	0.512	19.721937	-98.462746
Apan	19.58	3	2	4622	1.7	88.1	1.4	5.7	1.4	1.1	0.4	0.0	0.2	89.8	1.4	8.8	0.083	0.512	19.721937	-98.462746
Tepeapulco	34.92	3	0	4577	1.0	82.3	3.4	7.3	2.0	2.8	0.6	0.1	0.5	83.3	3.4	13.3	0.103	0.507	19.802970	-98.563266
X. C. Venta de Carpio - Tulancingo	51.18	1	0	3138	1.2	83.2	2.3	8.1	2.8	1.8	0.5	0.1	0.0	84.4	2.3	13.3	0.087	0.501	19.918445	-98.576432
X. C. Venta de Carpio - Tulancingo	51.18	3	0	2089	1.3	82.5	2.6	8.3	3.1	1.7	0.4	0.1	0.0	83.8	2.6	13.6	0.100	0.501	19.927469	-98.582703
El Ocote	70.44	1	0	2991	0.7	88.6	2.2	5.0	1.0	1.8	0.6	0.0	0.1	89.3	2.2	8.5	0.098	0.512	20.048300	-98.618027

32 CARR: Calpulalpan - Nanacamilpa

CLAVE: 29034

RUTA: TLAX-MEX-136

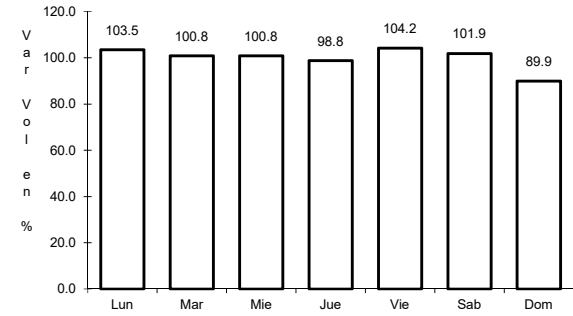
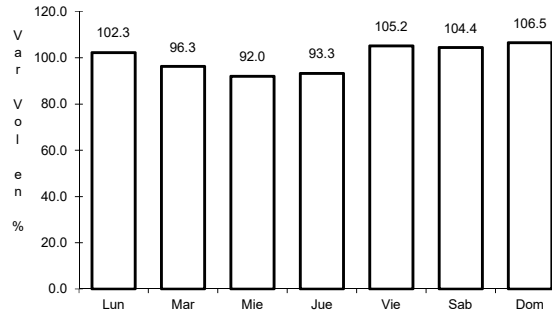
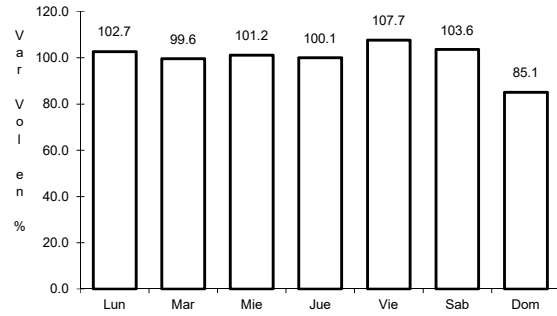
AÑO: 2016

LUGAR	ESTACION				CLASIFICACION VEHICULAR EN PORCIENTO										COORDENADAS					
	KM	TE	SC	TDPA	M	A	B	C2	C3	T3S2	T3S3	T3S2R4	OTROS	A	B	C	K'	D	LATITUD	LONGITUD
Calpulalpan	0.00	3	0	2202	4.7	86.3	0.1	6.7	0.6	1.4	0.1	0.0	0.1	91.0	0.1	8.9	0.078	0.534	19.567989	-98.568350
Nanacamilpa	15.50	1	0	1733	8.4	83.8	0.1	5.7	0.4	1.4	0.1	0.0	0.1	92.2	0.1	7.7	0.130	0.540	19.498428	-98.533205

1 CARR: Amozoc - Teziutlán

CLAVE: 00210

RUTA: MEX-129



Km: 1.40 Tipo: 3 Sent: 0

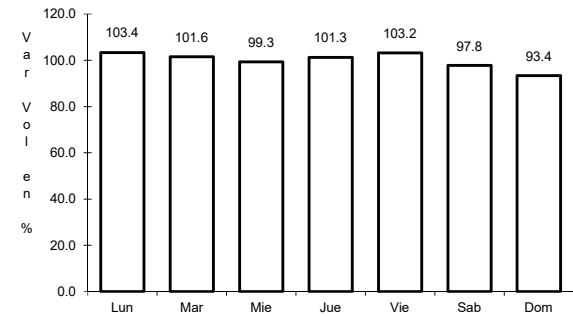
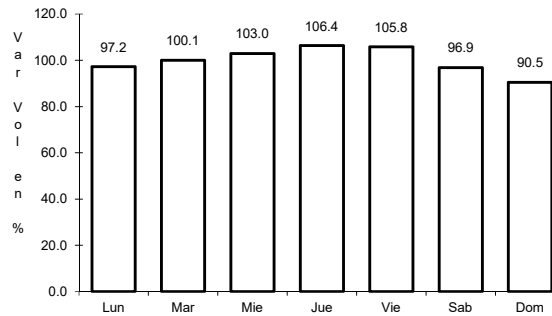
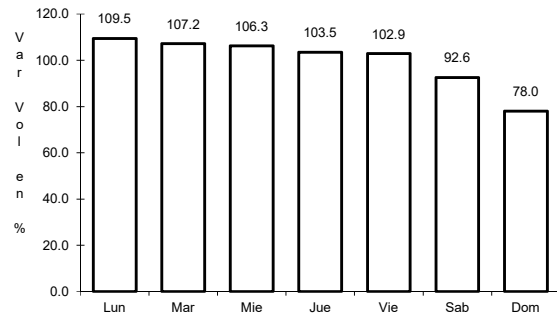
Km: 76.35 Tipo: 3 Sent: 0

Km: 157.80 Tipo: 1 Sent: 0

2 CARR: Apizaco - San Pablo Apetatitlán

CLAVE: 29035

RUTA: MEX-119



Km: 0.00 Tipo: 3 Sent: 0

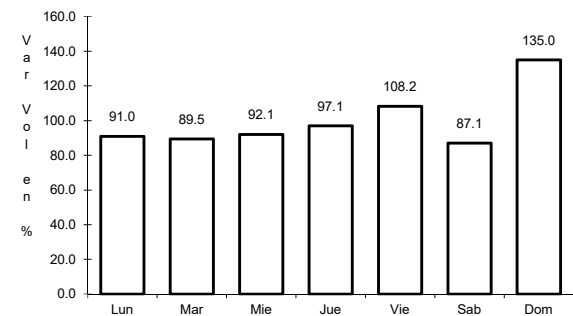
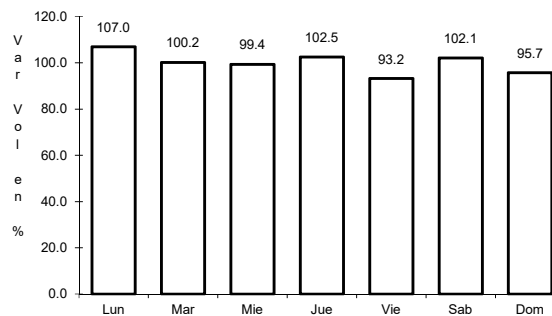
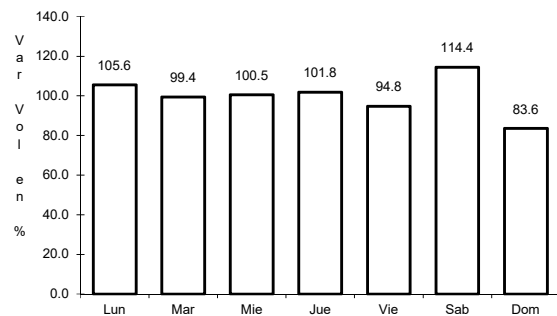
Km: 14.50 Tipo: 3 Sent: 0

Km: 20.00 Tipo: 1 Sent: 0

3 CARR: Apizaco - Tejocotal

CLAVE: 00430

RUTA: MEX-119



Km: 0.00 Tipo: 3 Sent: 1

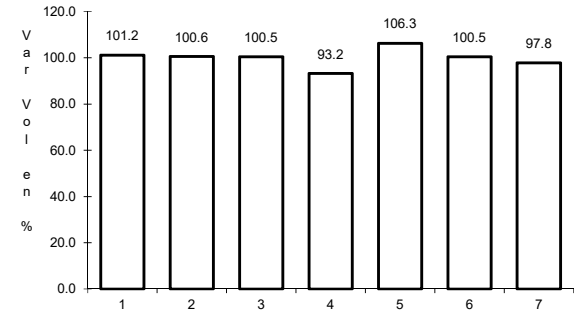
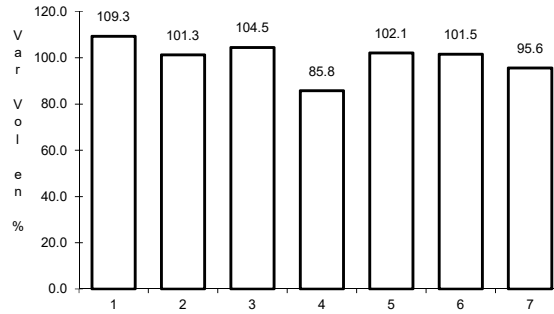
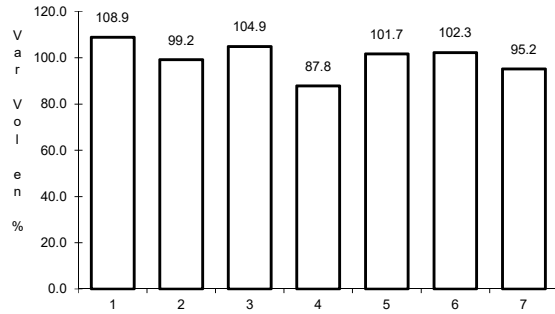
Km: 0.00 Tipo: 3 Sent: 2

Km: 113.15 Tipo: 1 Sent: 0

4 CARR: Huamantla - La Venta

CLAVE: 29564

RUTA: MEX-136



Km: 0.00 Tipo: 3 Sent: 1

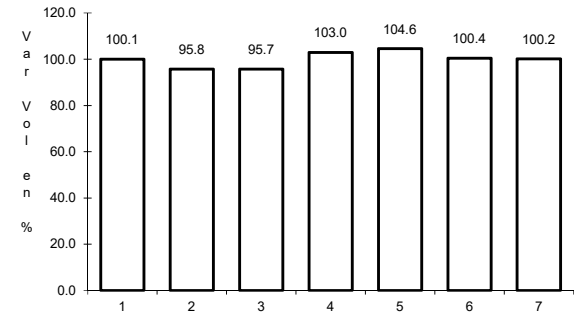
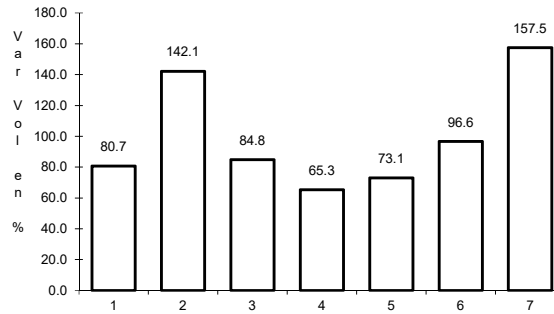
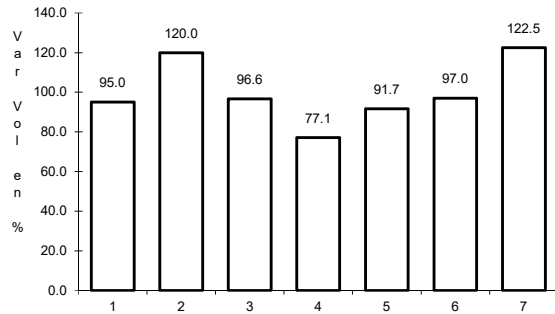
Km: 0.00 Tipo: 3 Sent: 2

Km: 17.60 Tipo: 1 Sent: 0

5 CARR: Huamantla - Terrenate

CLAVE: 29036

RUTA: MEX-136



Km: 0.00 Tipo: 3 Sent: 0

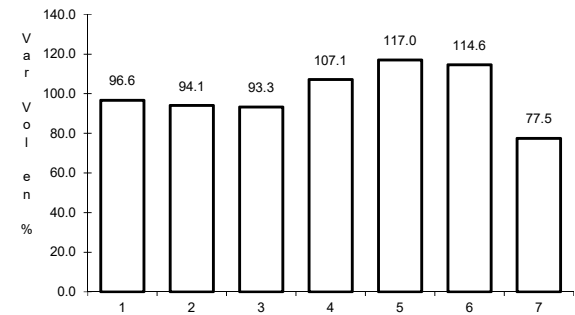
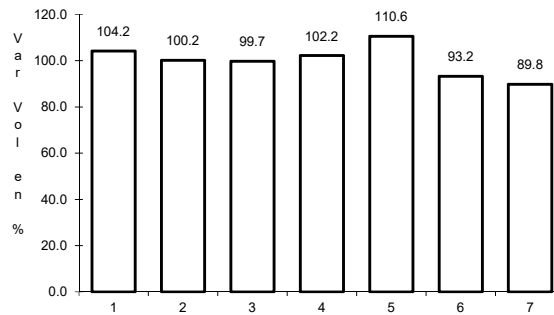
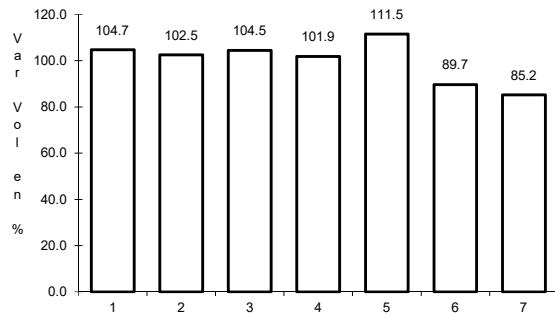
Km: 12.50 Tipo: 1 Sent: 0

Km: 21.00 Tipo: 1 Sent: 0

6 CARR: Libramiento de Apizaco

CLAVE: 29567

RUTA: MEX-136



Km: 6.00 Tipo: 1 Sent: 1

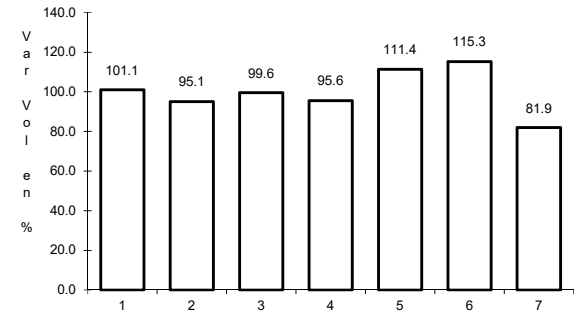
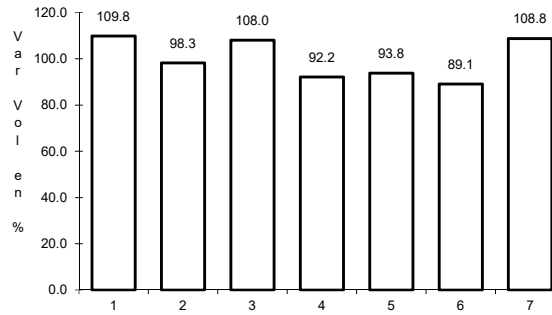
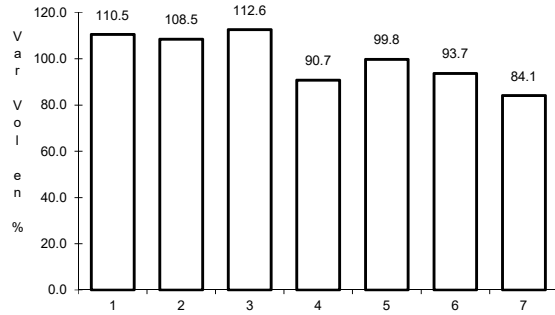
Km: 6.00 Tipo: 1 Sent: 2

Km: 6.00 Tipo: 3 Sent: 1

7 CARR: Libramiento Huamantla

CLAVE: 29567

RUTA: MEX-136



Km: 0.00 Tipo: 3 Sent: 1

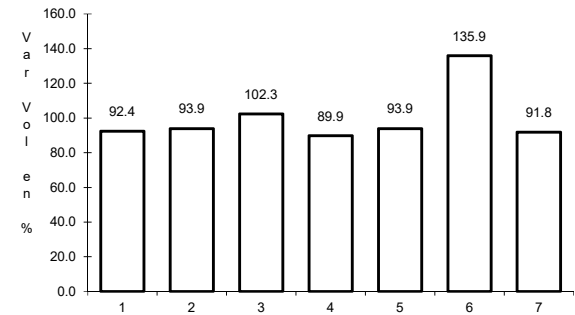
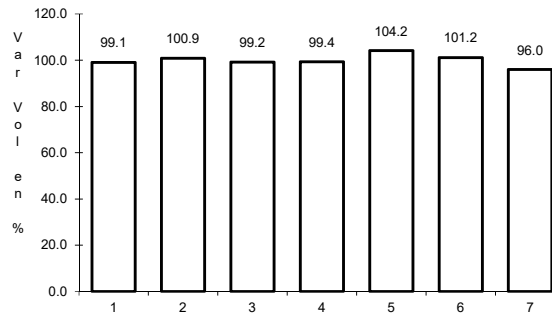
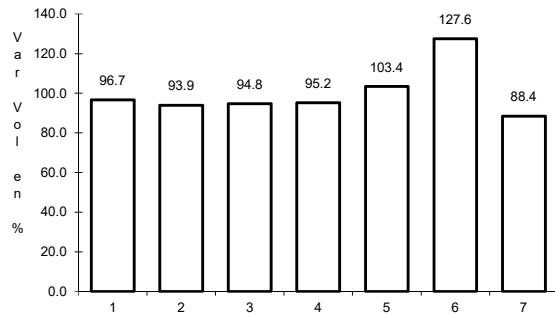
Km: 0.00 Tipo: 3 Sent: 2

Km: 4.60 Tipo: 1 Sent: 1

8 CARR: Libramiento Hueyotlipan

CLAVE: 29567

RUTA: MEX-136



Km: 0.00 Tipo: 3 Sent: 1

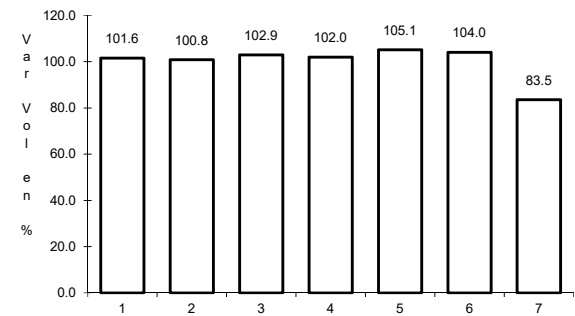
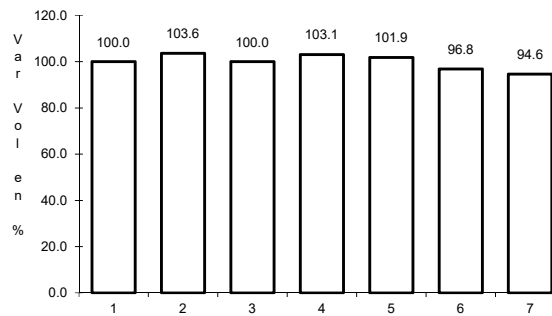
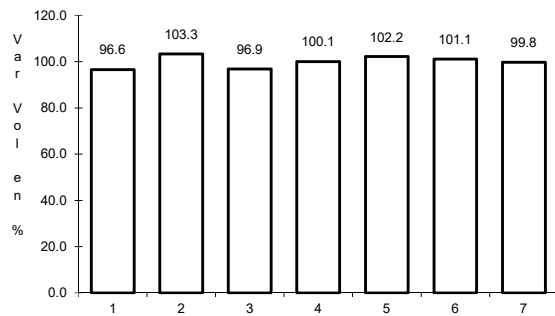
Km: 0.00 Tipo: 3 Sent: 2

Km: 2.70 Tipo: 1 Sent: 1

9 CARR: Los Reyes - Zacatepec

CLAVE: 00052

RUTA: MEX-136



Km: 3.35 Tipo: 3 Sent: 1

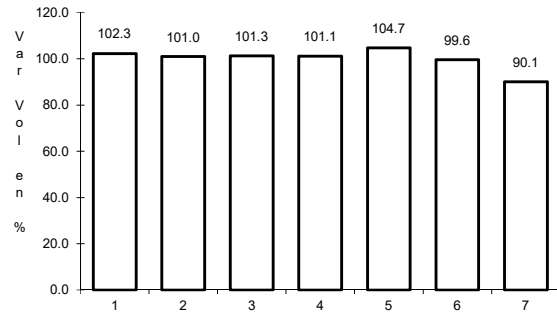
Km: 3.35 Tipo: 3 Sent: 2

Km: 173.47 Tipo: 3 Sent: 0

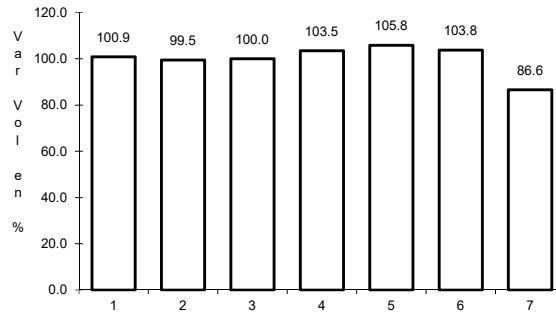
10 CARR: Puebla - Belem

CLAVE: 00055

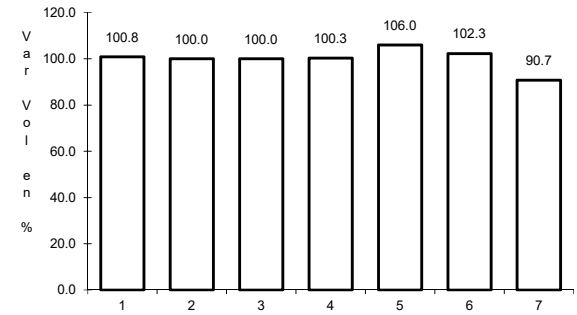
RUTA: MEX-121



Km: 4.00 Tipo: 3 Sent: 1



Km: 4.00 Tipo: 3 Sent: 2

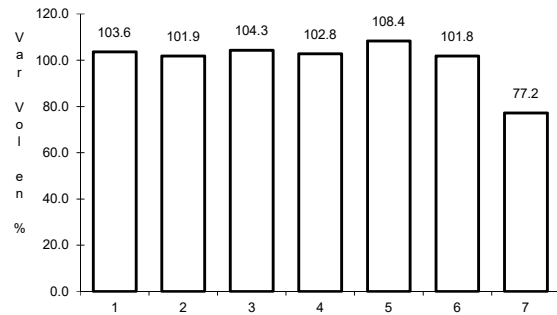


Km: 28.80 Tipo: 1 Sent: 1

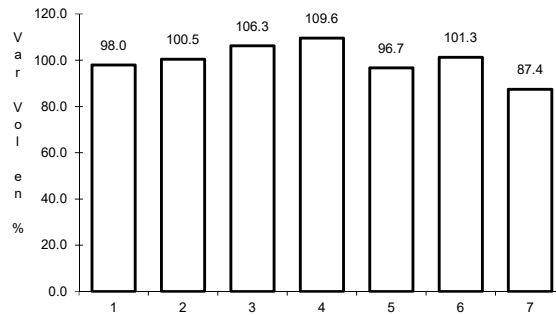
11 CARR: Puebla - Tlaxcala

CLAVE: 00475

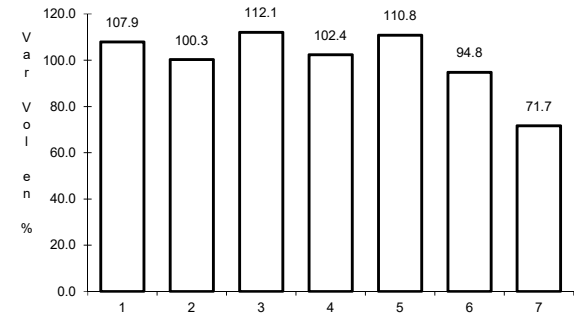
RUTA: MEX-119



Km: 5.41 Tipo: 3 Sent: 1



Km: 5.41 Tipo: 3 Sent: 2

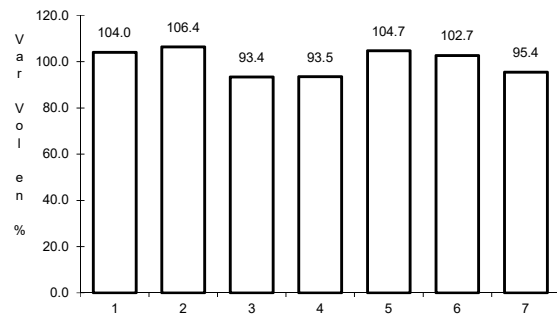


Km: 33.22 Tipo: 1 Sent: 1

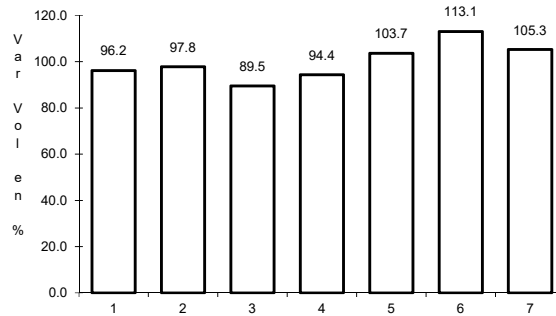
12 CARR: Ramal a San Felipe de Hidalgo

CLAVE: 29565

RUTA: MEX-136



Km: 0.00 Tipo: 3 Sent: 0

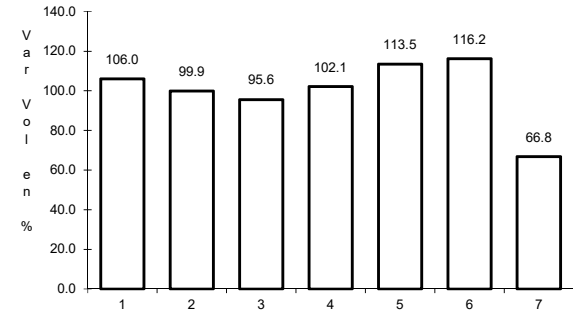
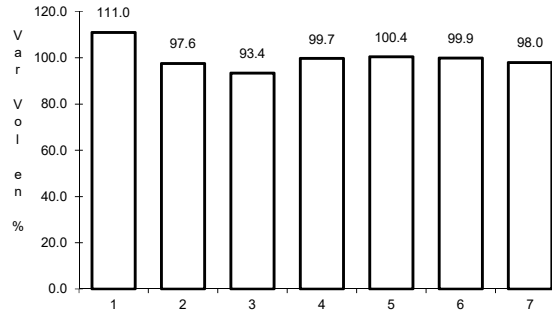
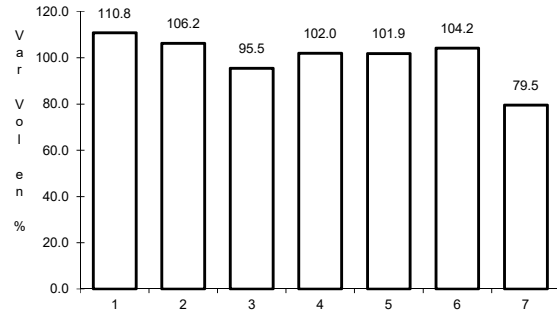


Km: 10.50 Tipo: 1 Sent: 0

13 CARR: San Martín Texmelucan - Tlaxcala

CLAVE: 00158

RUTA: MEX-117



Km: 0.00 Tipo: 3 Sent: 1

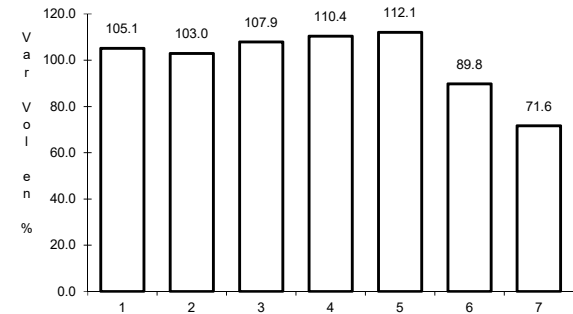
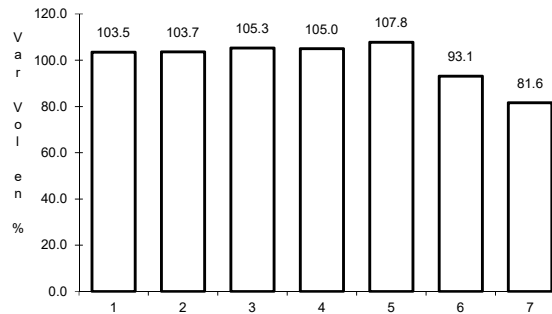
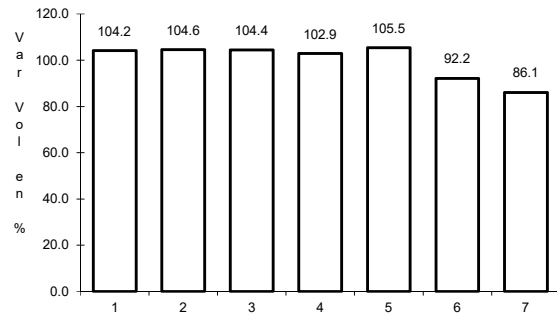
Km: 0.00 Tipo: 3 Sent: 2

Km: 24.81 Tipo: 1 Sent: 0

14 CARR: Tetlatlahuca - Santa Ana Chiautempan

CLAVE: 00158

RUTA: MEX-119



Km: 2.39 Tipo: 1 Sent: 0

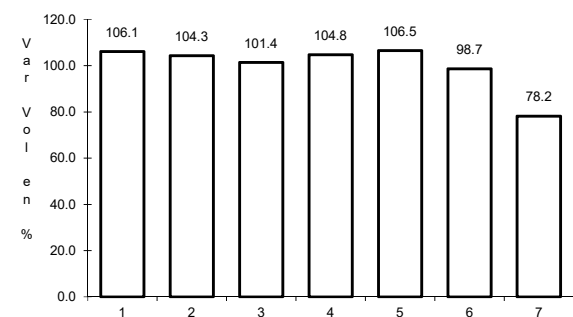
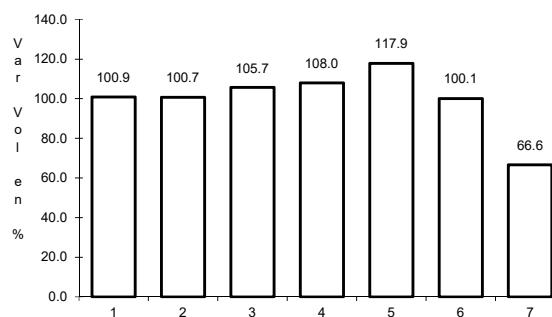
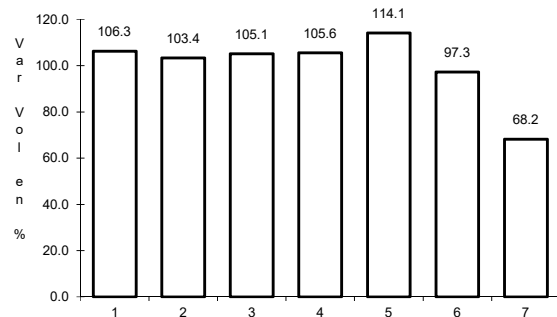
Km: 5.50 Tipo: 1 Sent: 0

Km: 9.94 Tipo: 1 Sent: 0

15 CARR: Tlaxcala - Belem

CLAVE: 29389

RUTA: MEX-119



Km: 3.91 Tipo: 1 Sent: 1

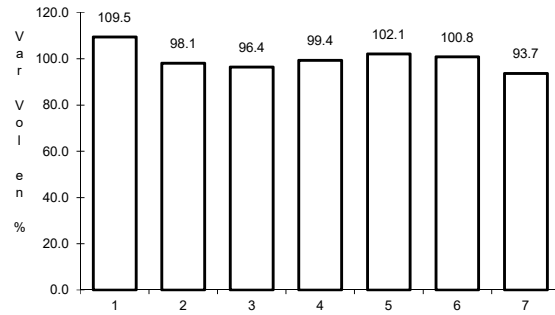
Km: 3.91 Tipo: 1 Sent: 2

Km: 10.06 Tipo: 1 Sent: 0

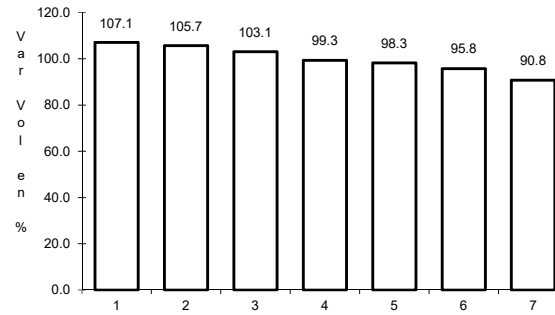
16 CARR: Villa Alta - T. C. (Puebla - Tlaxcala)

CLAVE: 29566

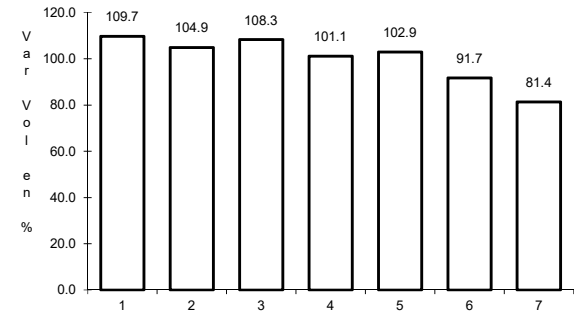
RUTA: MEX-119



Km: 0.00 Tipo: 3 Sent: 0



Km: 10.50 Tipo: 3 Sent: 0

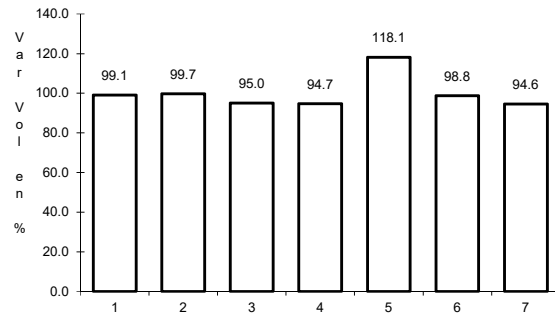


Km: 22.05 Tipo: 1 Sent: 0

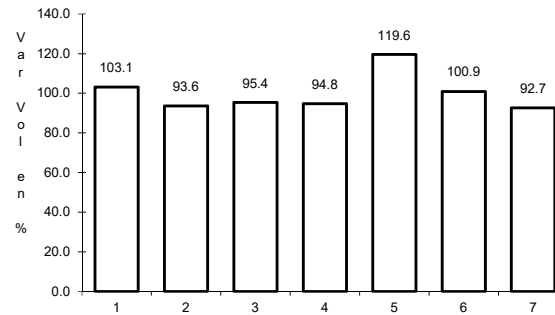
17 CARR: Amozoc - Perote (Cuota)

CLAVE: 00030

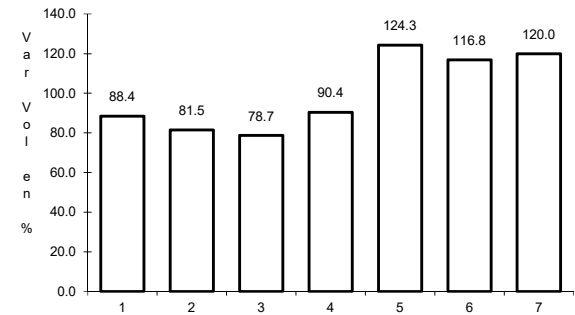
RUTA: MEX-140D



Km: 0.00 Tipo: 3 Sent: 0



Km: 25.80 Tipo: 3 Sent: 0

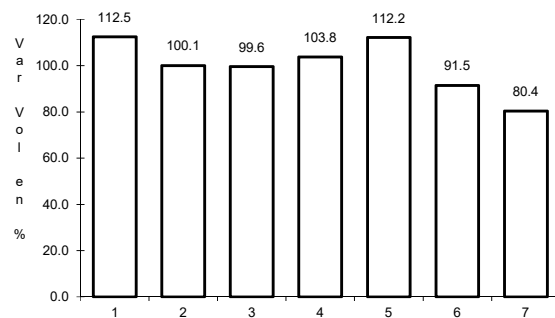


Km: 62.70 Tipo: 3 Sent: 0

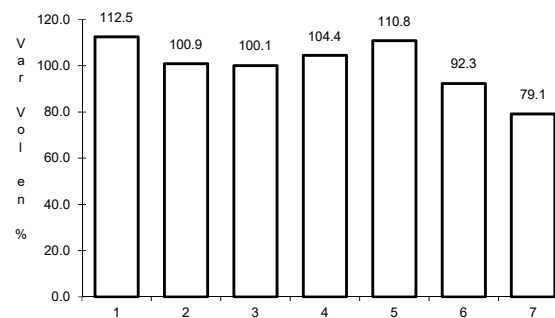
18 CARR: Libramiento de Tlaxcala (Cuota)

CLAVE:

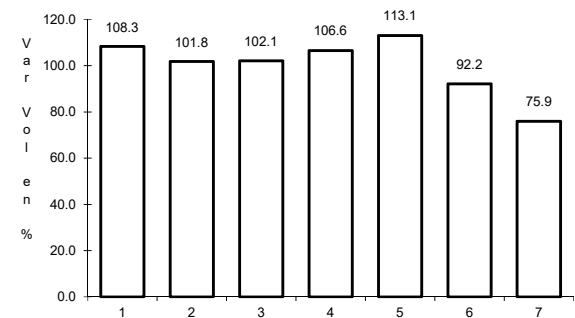
RUTA: MEX-117D



Km: 0.00 Tipo: 3 Sent: 1



Km: 0.00 Tipo: 3 Sent: 2

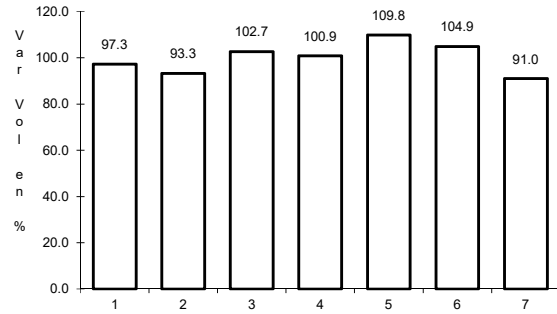


Km: 11.00 Tipo: 1 Sent: 1

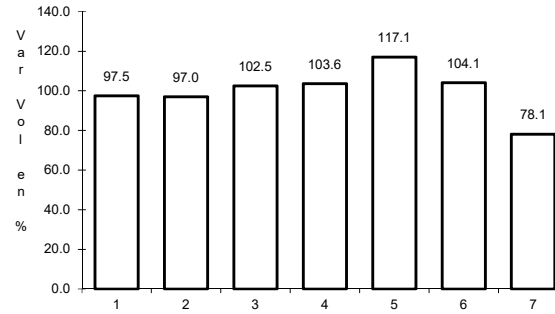
19 CARR: Libramiento Norte de la Ciudad de México (Cuota)

CLAVE: 0902

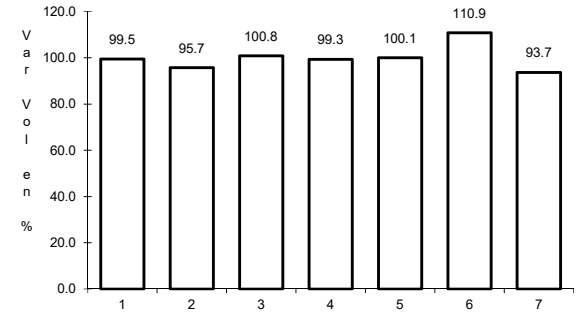
RUTA: MEX-M40D



Km: 12.90 Tipo: 1 Sent: 1



Km: 12.90 Tipo: 1 Sent: 2

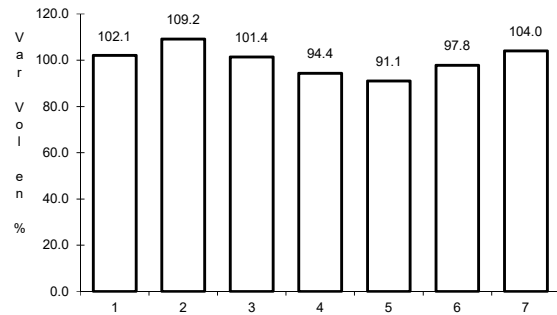


Km: 226.73 Tipo: 1 Sent: 1

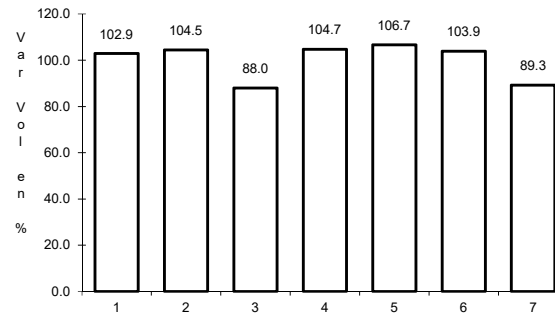
20 CARR: México - Puebla (Cuota)

CLAVE: 00450

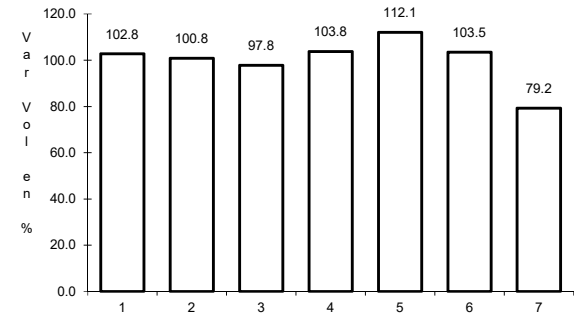
RUTA: MEX-150D



Km: 17.00 Tipo: 3 Sent: 1



Km: 17.00 Tipo: 3 Sent: 2

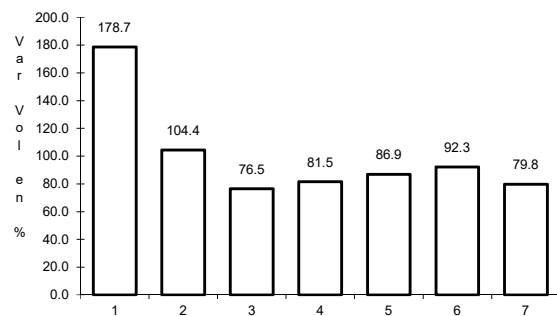


Km: 120.46 Tipo: 3 Sent: 1

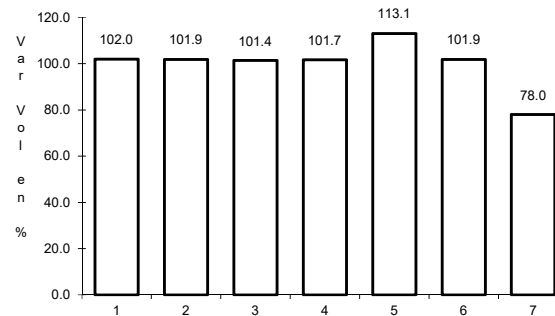
21 CARR: San Martin Texmelucan - Tlaxcala - El Molinito (Cuota)

CLAVE: 00212

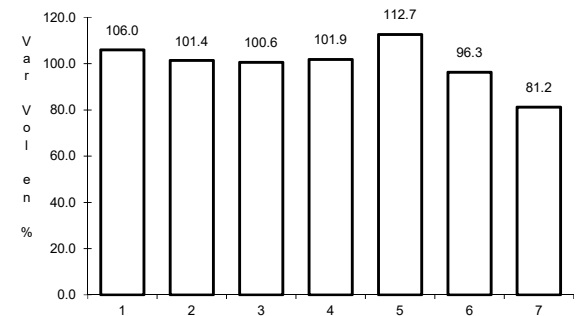
RUTA: MEX-117D



Km: 1.80 Tipo: 1 Sent: 0



Km: 35.20 Tipo: 1 Sent: 1

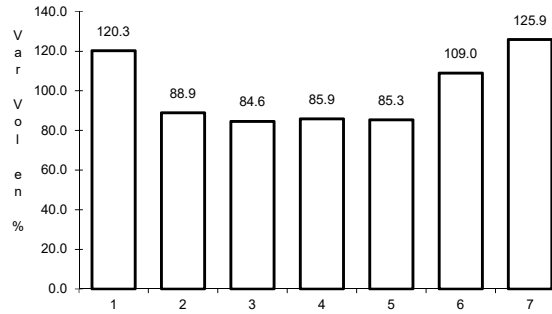
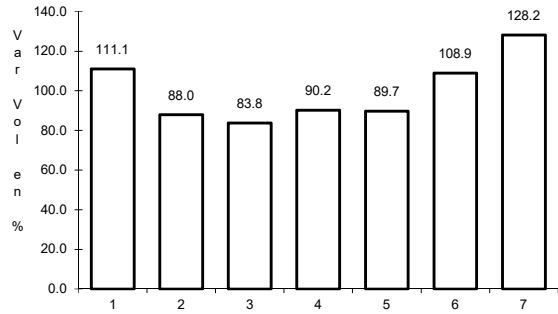


Km: 35.20 Tipo: 1 Sent: 2

22 CARR: Tlaxco - Tejocotal (Cuota)

CLAVE: 00209

RUTA: MEX-119D



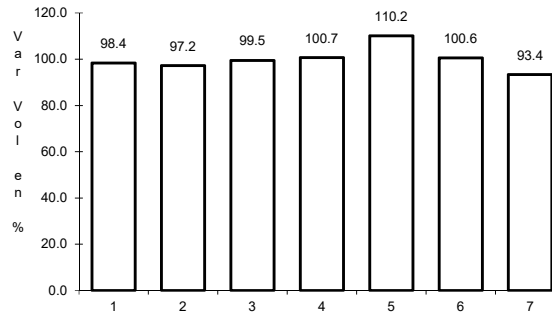
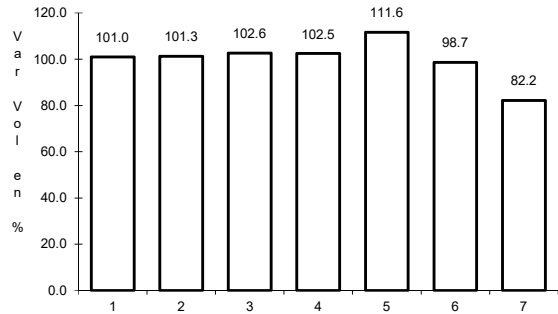
Km: 23.00 Tipo: 3 Sent: 0

Km: 56.20 Tipo: 3 Sent: 0

23 CARR: Libramiento de Ocotlán

CLAVE: 29567

RUTA: TLAX



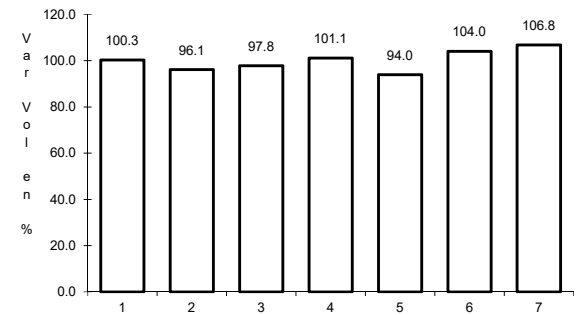
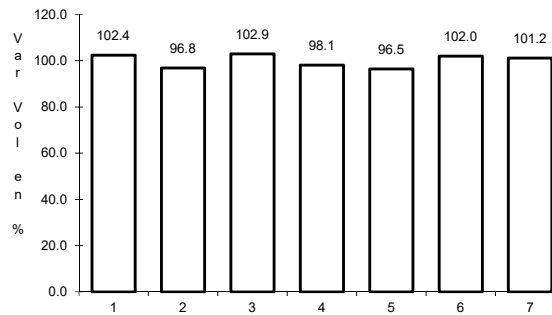
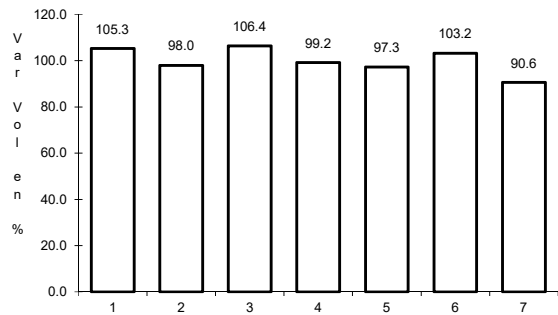
Km: 0.00 Tipo: 3 Sent: 1

Km: 0.00 Tipo: 3 Sent: 2

24 CARR: Ramal a Altzayanca de Hidalgo

CLAVE: 29562

RUTA: TLAX



Km: 0.00 Tipo: 3 Sent: 0

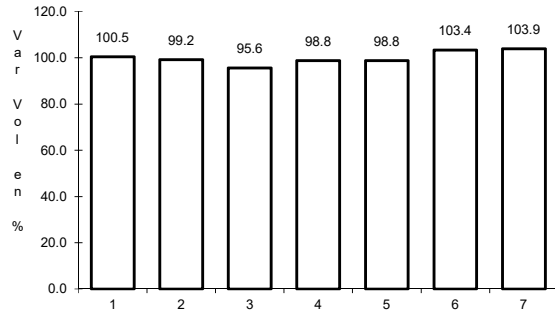
Km: 6.50 Tipo: 3 Sent: 0

Km: 15.00 Tipo: 1 Sent: 0

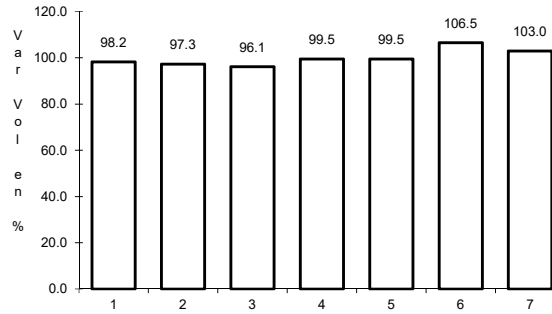
25 CARR: Ramal a San Pedro Ecatepec

CLAVE: 29561

RUTA: TLAX



Km: 0.00 Tipo: 3 Sent: 0

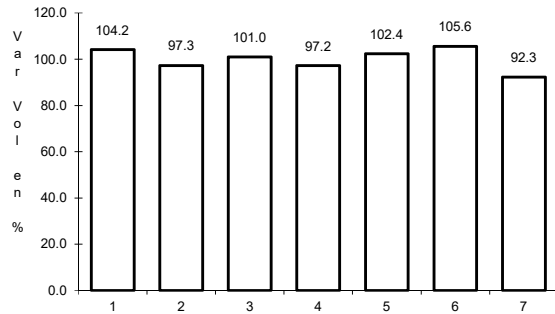


Km: 4.60 Tipo: 1 Sent: 0

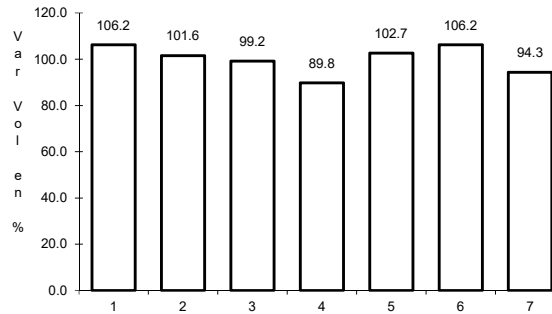
26 CARR: Ramal a Xalostoc

CLAVE: 29563

RUTA: TLAX



Km: 0.00 Tipo: 3 Sent: 0

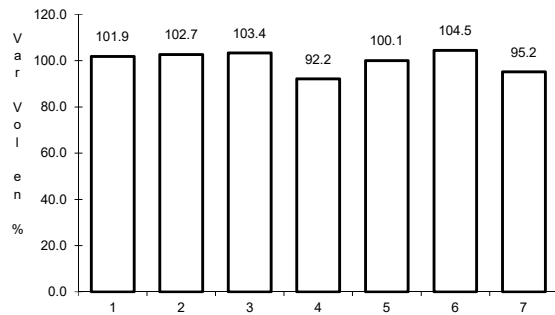


Km: 2.50 Tipo: 1 Sent: 0

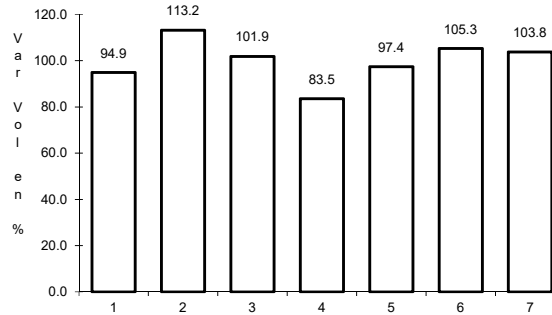
27 CARR: Xalostoc - Terrenate

CLAVE: 29390

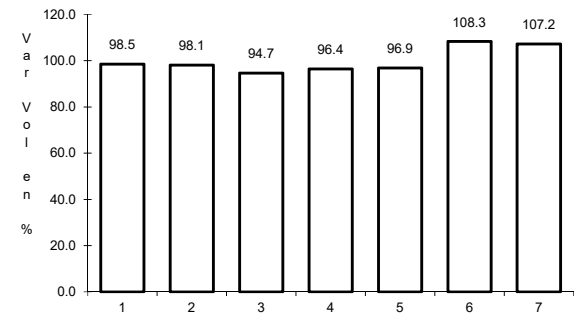
RUTA: TLAX



Km: 0.00 Tipo: 3 Sent: 0



Km: 7.10 Tipo: 3 Sent: 0

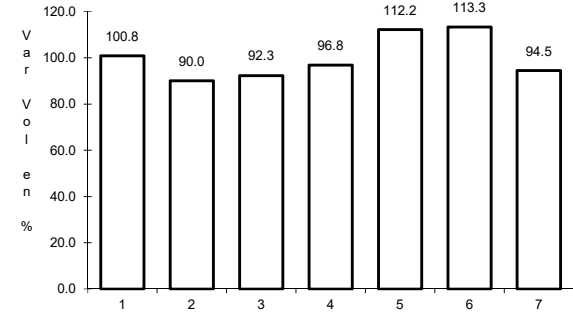
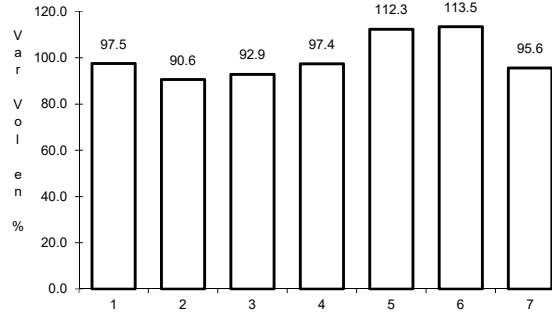
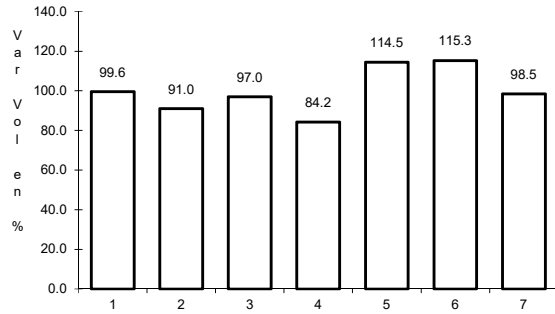


Km: 17.50 Tipo: 1 Sent: 0

28 CARR: Puebla - Tlaxcala (Cuota)

CLAVE:

RUTA: PUE-D



Km: 0.00 Tipo: 3 Sent: 0

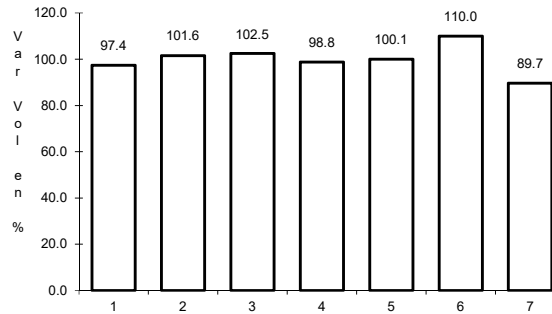
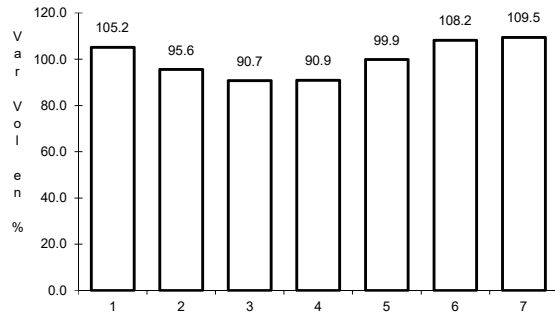
Km: 8.00 Tipo: 3 Sent: 0

Km: 17.80 Tipo: 1 Sent: 0

29 CARR: Acocotla - Vicente Guerrero

CLAVE: 29560

RUTA: MEX-TLAX



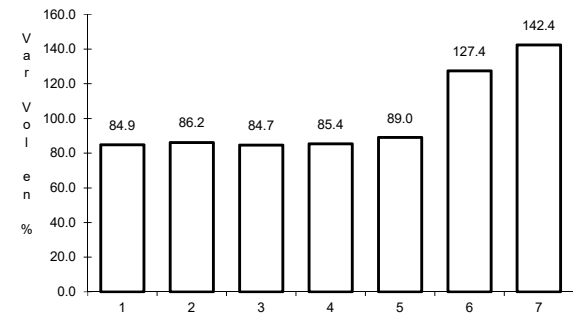
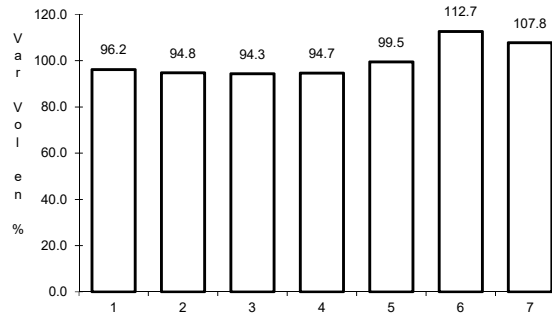
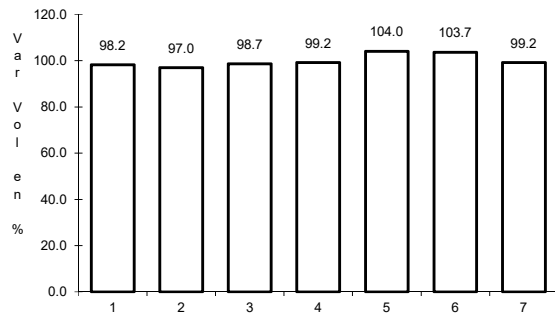
Km: 0.00 Tipo: 3 Sent: 0

Km: 37.70 Tipo: 1 Sent: 0

30 CARR: Apizaco - Emiliano Zapata

CLAVE: 29033

RUTA: TLAX-MEX-136



Km: 0.00 Tipo: 3 Sent: 0

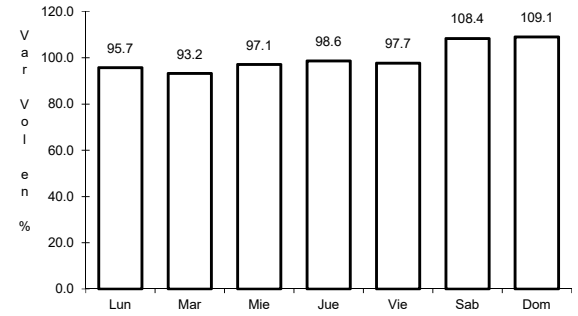
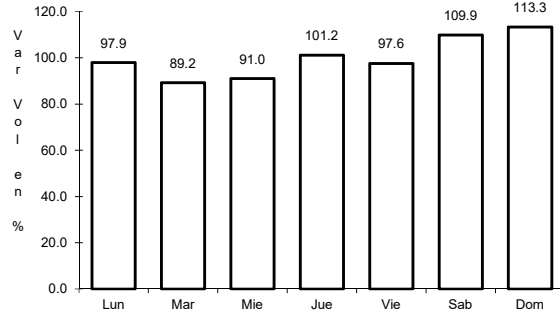
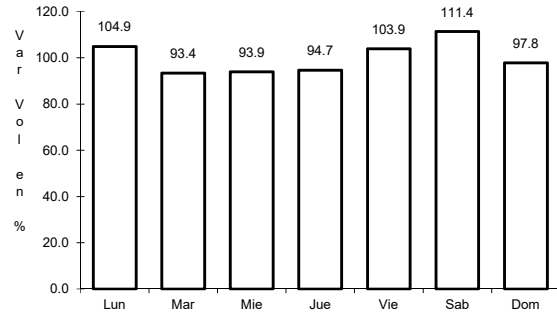
Km: 16.00 Tipo: 1 Sent: 0

Km: 37.00 Tipo: 1 Sent: 0

31 CARR: Calpulalpan - El Ocote

CLAVE: 00054

RUTA: MEX-HGO



Km: 0.00 Tipo: 3 Sent: 0

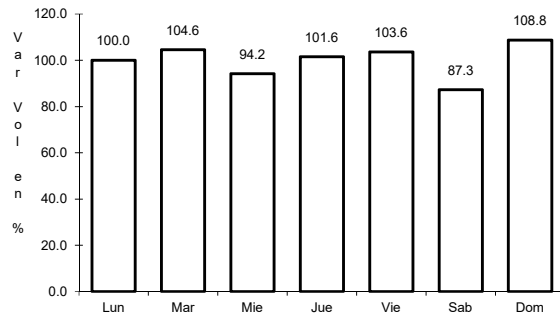
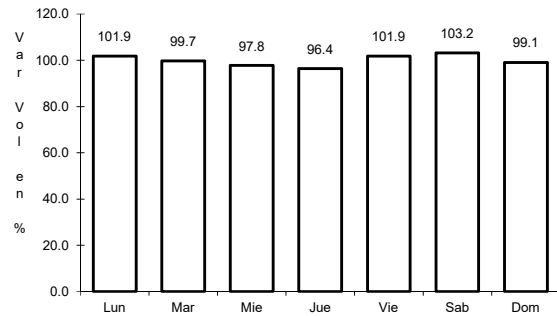
Km: 34.92 Tipo: 3 Sent: 0

Km: 70.44 Tipo: 1 Sent: 0

32 CARR: Calpulalpan - Nanacamilpa

CLAVE: 29034

RUTA: TLAX-MEX-136



Km: 0.00 Tipo: 3 Sent: 0

Km: 15.50 Tipo: 1 Sent: 0