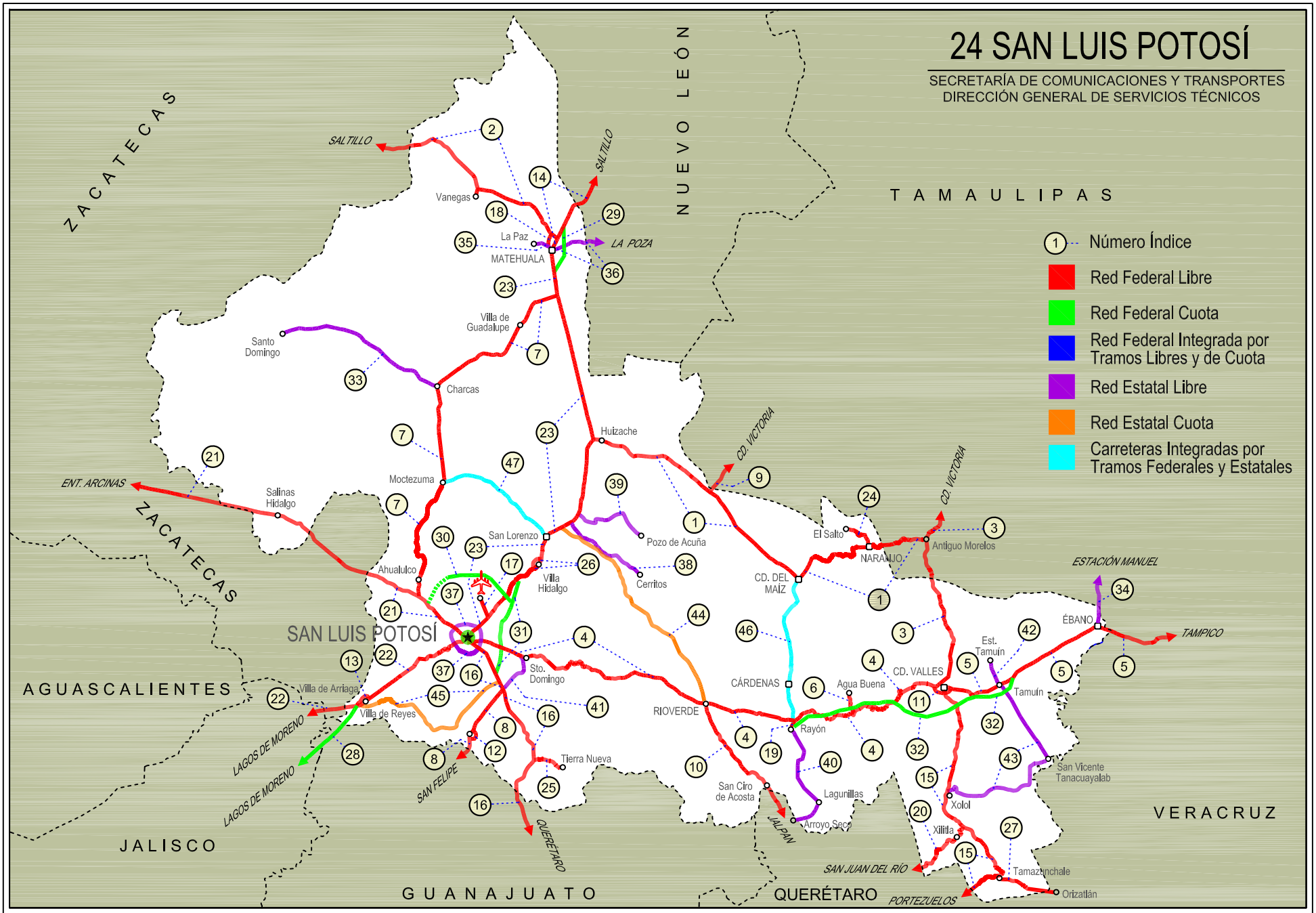
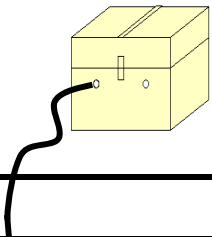


24 SAN LUIS POTOSÍ

SECRETARÍA DE COMUNICACIONES Y TRANSPORTES
DIRECCIÓN GENERAL DE SERVICIOS TÉCNICOS



- ① Número Índice
- Red Federal Libre
- Red Federal Cuota
- Red Federal Integrada por Tramos Libres y de Cuota
- Red Estatal Libre
- Red Estatal Cuota
- Carreteras Integradas por Tramos Federales y Estatales



SAN LUIS POTOSI

---RED FEDERAL LIBRE---

1	Antiguo Morelos - Ent. El Huizache	MEX-080
2	Carbonera - T. C. (Ent. Morelos - Saltillo)	MEX-062
3	Cd. Valles - Cd. Victoria	MEX-085
4	Cd. Valles - San Luis Potosí	MEX-070
5	Cd. Valles - Tampico	MEX-070
6	El Clarín - Agua Buena	MEX-070
7	Ent. Ahualulco - Ent. La Bonita	MEX-063
8	Ent. de Zaragoza - San Felipe	MEX-037
9	Ent. Tula - Cd. Victoria	MEX-101
10	Jalpan de Serra - Rioverde	MEX-069
11	Libramiento de Cd. Valles	MEX-070
12	Libramiento de Villa de Reyes	MEX-037
13	Libramiento Villa de Arriaga	MEX-080
14	Matehuala - Ent. Puerto México	MEX-057
15	Portezuelo - Cd. Valles	MEX-085
16	Querétaro - San Luis Potosí	MEX-057
17	Ramal a Aeropuerto de S. L. P.	MEX-057
18	Ramal a Ojo de Agua	MEX-062
19	Ramal a Rayón	MEX-070
20	San Juan del Río - Xilitla	MEX-120
21	San Luis Potosí - Ent. Arcinas	MEX-049
22	San Luis Potosí - Lagos de Moreno	MEX-070-080
23	San Luis Potosí - Matehuala	MEX-057
24	T. C. (Ent. El Huizache- Ant. Morelos)-El Salto	MEX-080
25	T. C. (Qro - S.L.P.) - Tierra Nueva	MEX-057
26	T. C. (S.L.P. - Matehuala) - Villa Hidalgo	MEX-057
27	Tamazunchale - San Felipe Orizatlán	MEX-085

---RED FEDERAL DE CUOTA---

28	Lagos de Moreno - Villa de Arriaga (Cuota)	MEX-080D
29	Libramiento de Matehuala (Cuota)	MEX-057D
30	Libramiento Norponiente de San Luis Potosí (Cuota)	MEX-057D
31	Libramiento Oriente de San Luis Potosí (Cuota)	MEX-057D
32	Rayón - Ent. Tamuín (Cuota)	MEX-070D

---RED ESTATAL LIBRE---

33	Charcas - Villa Santo Domingo	SLP-017
34	Ébano - Estación Manuel	SLP-TAM
35	Matehuala - La Paz	SLP-020
36	Matehuala - La Poza	SLP-029-NL-061
37	Periférico de San Luis Potosí	SLP-032
38	Ramal a Cerritos	SLP-007
39	Ramal a Pozo de Acuña	SLP-009
40	Rayón - Arroyo Seco	SLP-011
41	Santo Domingo - Cerro Gordo	SLP-022
42	Tamuín - Estación F.F.C.C. Tamuín	SLP-040
43	Tamuín - Xolol	SLP-014

---RED ESTATAL DE CUOTA---

44	Cerritos - Rioverde (Cuota)	SLP-D
45	San Luis Potosí - Villa de Arriaga (Cuota)	SLP-D

---CARRETERAS INTEGRADAS POR TRAMOS FEDERALES Y ESTATALES---

46	Rayón - Cd. del Maíz	MEX-070-SLP-005
47	San Lorenzo - Moctezuma	MEX-063-SLP-012

SAN LUIS POTOSI

1 CARR: Antiguo Morelos - Ent. El Huizache

CLAVE: 00136

RUTA: MEX-080

AÑO: 2016

LUGAR	ESTACION				CLASIFICACION VEHICULAR EN PORCIENTO										COORDENADAS					
	KM	TE	SC	TDPA	M	A	B	C2	C3	T3S2	T3S3	T3S2R4	OTROS	A	B	C	K'	D	LATITUD	LONGITUD
Antiguo Morelos	0.00	3	0	2230	5.5	77.0	1.4	9.4	2.1	2.7	1.4	0.3	0.2	82.5	1.4	16.1	0.104	0.503	22.553832	-99.088136
Nuevo Morelos	19.28	1	0	1072	3.6	74.2	1.8	11.7	2.9	2.8	1.5	0.9	0.6	77.8	1.8	20.4	0.101	0.518	22.540836	-99.212234
Lim. Edos. Term. Tamps. Ppia. S. L. P.	25.00																			
El Naranjo	32.00	1	0	4119	3.3	81.0	0.5	10.6	1.0	2.9	0.3	0.1	0.3	84.3	0.5	15.2	0.097	0.540	22.530271	-99.311057
El Naranjo	32.00	3	0	2133	9.3	79.4	1.1	6.7	1.0	2.1	0.2	0.1	0.1	88.7	1.1	10.2	0.078	0.503	22.518116	-99.335685
Cd. del Maíz	86.00	3	0	1481	2.2	72.1	2.1	18.3	2.6	2.1	0.5	0.1	0.0	74.3	2.1	23.6	0.094	0.503	22.411450	-99.618888
T. Der. Tula	141.21	3	0	2567	0.7	27.9	3.1	9.2	3.4	22.8	8.7	22.4	1.8	28.6	3.1	68.3	0.067	0.511	22.736989	-99.978187
T. C. San Luis Potosí - Matehuala (Ent. El Huizache)	198.83	1	0	2711	0.7	27.9	3.1	9.2	3.4	22.8	8.7	22.4	1.8	28.6	3.1	68.3	0.063	0.511	22.931043	-100.447849

2 CARR: Carbonera - T. C. (Ent. Morelos - Saltillo)

CLAVE: 00218

RUTA: MEX-062

AÑO: 2016

LUGAR	ESTACION				CLASIFICACION VEHICULAR EN PORCIENTO										COORDENADAS					
	KM	TE	SC	TDPA	M	A	B	C2	C3	T3S2	T3S3	T3S2R4	OTROS	A	B	C	K'	D	LATITUD	LONGITUD
Carbonera	0.00	3	0	2819	10.3	73.2	1.1	10.3	1.5	2.6	0.6	0.3	0.1	83.5	1.1	15.4	0.089	0.509	23.703775	-100.627645
Cedral	18.00	1	0	3217	10.3	78.9	0.7	4.6	1.6	2.5	0.6	0.5	0.3	89.2	0.7	10.1	0.099	0.535	23.829378	-100.738903
Cedral	18.00	3	0	3403	9.0	71.9	0.8	12.9	1.4	2.8	0.4	0.6	0.2	80.9	0.8	18.3	0.098	0.503	23.805377	-100.707378
Lim. Edos. Term. S. L. P. Ppia. Zac.	79.20																			
T. C. Ent. Morelos - Saltillo	112.00	1	0	1287	4.6	74.7	1.1	15.3	1.9	1.9	0.3	0.1	0.1	79.3	1.1	19.6	0.106	0.507	24.155652	-101.490962

3 CARR: Cd. Valles - Cd. Victoria

CLAVE: 00509

RUTA: MEX-085

AÑO: 2016

LUGAR	ESTACION				CLASIFICACION VEHICULAR EN PORCIENTO										COORDENADAS					
	KM	TE	SC	TDPA	M	A	B	C2	C3	T3S2	T3S3	T3S2R4	OTROS	A	B	C	K'	D	LATITUD	LONGITUD
Cd. Valles	0.00	3	0	10670	5.9	78.2	1.4	6.3	0.7	5.4	0.9	0.4	0.8	84.1	1.4	14.5	0.070	0.502	22.008686	-99.003223
Lim. Edos. Term. S. L. P. Ppia. Tamps.	50.40																			
Antiguo Morelos	66.90	1	0	2050	4.5	70.8	6.4	8.1	2.3	3.5	1.2	2.8	0.4	75.3	6.4	18.3	0.097	0.528	22.549611	-99.078409
Antiguo Morelos	66.90	3	0	3546	4.5	72.3	5.0	10.4	1.5	3.2	0.9	1.8	0.4	76.8	5.0	18.2	0.071	0.507	22.561840	-99.077789
Cd. Mante	98.00	1	0	5565	8.9	71.5	2.0	6.7	2.4	4.0	1.8	1.7	1.0	80.4	2.0	17.6	0.091	0.516	22.711666	-98.989296
T. Izq. Ocampo	110.00	3	0	3363	10.1	73.4	4.5	7.0	1.3	2.1	0.5	0.7	0.4	83.5	4.5	12.0	0.094	0.500	22.838673	-99.024362
T. Izq. Gómez Farías	132.84	3	0	1796	7.6	74.8	7.5	6.8	1.3	1.4	0.5	0.1	0.0	82.4	7.5	10.1	0.094	0.502	23.030592	-99.093641
T. Izq. Llera de Canales	170.00	3	0	3546	4.5	72.3	5.0	10.4	1.5	3.2	0.9	1.8	0.4	76.8	5.0	18.2	0.071	0.507	23.310009	-99.018935
T. Der. González	172.50	3	0	2086	0.8	81.4	6.3	7.4	1.5	1.7	0.7	0.0	0.2	82.2	6.3	11.5	0.090	0.537	23.322354	-98.998077
Cd. Victoria	232.00	1	0	2292	1.0	80.1	5.9	8.5	1.6	1.5	1.0	0.1	0.3	81.1	5.9	13.0	0.105	0.521	23.659943	-99.096647

SAN LUIS POTOSI

4 CARR: Cd. Valles - San Luis Potosi

CLAVE: 24135

RUTA: MEX-070

AÑO: 2016

LUGAR	ESTACION				CLASIFICACION VEHICULAR EN PORCIENTO										COORDENADAS					
	KM	TE	SC	TDPA	M	A	B	C2	C3	T3S2	T3S3	T3S2R4	OTROS	A	B	C	K'	D	LATITUD	LONGITUD
Cd. Valles	0.00	3	1	4391	3.4	75.6	2.7	10.3	2.8	2.6	1.5	0.8	0.3	79.0	2.7	18.3	0.079	0.508	21.990105	-99.045155
Cd. Valles	0.00	3	2	4253	3.6	74.2	3.0	10.5	3.1	2.8	1.7	0.8	0.3	77.8	3.0	19.2	0.074	0.508	21.990117	-99.045139
T. Der. Damián Carmona	31.25	3	0	1731	3.9	74.9	0.9	11.0	3.1	4.1	1.6	0.3	0.2	78.8	0.9	20.3	0.089	0.507	21.925414	-99.228027
T. Der. Canoas	75.40	1	0	1850	3.1	74.2	1.4	10.1	4.1	4.5	1.6	0.4	0.6	77.3	1.4	21.3	0.087	0.503	21.877516	-99.500530
X. C. Cárdenas - Rayón	93.00	1	0	2820	1.9	74.2	1.0	13.6	3.1	4.1	1.3	0.4	0.4	76.1	1.0	22.9	0.076	0.503	21.852564	-99.625918
X. C. Cárdenas - Rayón	93.00	3	0	5505	1.4	73.3	2.6	11.4	2.5	5.2	1.8	1.0	0.8	74.7	2.6	22.7	0.084	0.527	21.859608	-99.652275
Río Verde	133.76	1	1	9260	7.8	81.3	0.9	5.1	0.7	1.3	2.3	0.2	0.4	89.1	0.9	10.0	0.091	0.502	21.922643	-99.982781
Río Verde	133.76	1	2	9182	8.0	80.1	1.0	5.5	0.8	1.4	2.6	0.2	0.4	88.1	1.0	10.9	0.074	0.502	21.922629	-99.982785
Río Verde	133.76	3	1	10338	7.3	82.4	0.3	6.8	0.7	1.3	0.9	0.1	0.2	89.7	0.3	10.0	0.076	0.501	21.934444	-100.023423
Río Verde	133.76	3	2	10291	7.4	82.0	0.3	7.0	0.8	1.3	0.8	0.1	0.3	89.4	0.3	10.3	0.074	0.501	21.934454	-100.023416
T. Der. Guaxcama	161.04	3	0	3167	0.7	83.3	1.1	9.9	1.7	1.6	1.2	0.2	0.3	84.0	1.1	14.9	0.095	0.505	22.041350	-100.274876
T. Izq. Zaragoza	239.50	1	0	4505	1.4	75.4	1.9	10.9	4.1	3.8	2.0	0.1	0.4	76.8	1.9	21.3	0.075	0.515	22.098606	-100.742692
T. Izq. Zaragoza	239.50	3	0	6988	1.6	75.0	1.1	13.4	2.5	3.8	1.6	0.6	0.4	76.6	1.1	22.3	0.086	0.506	22.100599	-100.748216
X. Lib. Ote. de San Luis Potosí	255.00	1	0	9826	2.4	68.6	6.8	9.9	4.2	5.0	1.9	0.5	0.7	71.0	6.8	22.2	0.065	0.504	22.126863	-100.821824
X. Periférico de San Luis Potosí	257.44	1	1	23697	3.0	88.2	0.5	5.6	0.9	0.8	0.8	0.1	0.1	91.2	0.5	8.3	0.098	0.529	22.153326	-100.896063
X. Periférico de San Luis Potosí	257.44	1	2	21112	3.2	87.3	0.5	6.2	0.9	0.9	0.8	0.1	0.1	90.5	0.5	9.0	0.091	0.529	22.153332	-100.896056
San Luis Potosí	261.94																			

5 CARR: Cd. Valles - Tampico

CLAVE: 00138

RUTA: MEX-070

AÑO: 2016

LUGAR	ESTACION				CLASIFICACION VEHICULAR EN PORCIENTO										COORDENADAS					
	KM	TE	SC	TDPA	M	A	B	C2	C3	T3S2	T3S3	T3S2R4	OTROS	A	B	C	K'	D	LATITUD	LONGITUD
Cd. Valles	0.00	3	0	8476	3.4	70.9	3.1	10.2	4.6	4.5	1.7	0.8	0.8	74.3	3.1	22.6	0.070	0.510	21.975868	-98.961278
T. Der. Santa Elena	15.25	3	0	7337	1.9	72.5	3.1	9.2	4.0	4.5	2.1	2.1	0.6	74.4	3.1	22.5	0.072	0.503	21.961381	-98.877629
Tamuín	29.60	1	0	6397	3.8	73.4	2.2	9.9	2.6	4.3	1.7	1.5	0.6	77.2	2.2	20.6	0.059	0.501	21.997343	-98.781410
Ébano	79.00	1	0	6395	10.7	66.5	2.2	7.5	1.5	6.6	2.1	1.9	1.0	77.2	2.2	20.6	0.080	0.504	22.214148	-98.392629
Ébano	79.00	3	0	4920	2.8	72.1	2.2	9.1	2.7	5.5	2.0	2.6	1.0	74.9	2.2	22.9	0.084	0.501	22.211870	-98.360986
Lim. Edos. Term. S. L. P. Ppia. Ver.	83.57																			
T. Der. Pánuco	103.00	1	0	5631	6.3	68.7	2.6	9.3	1.8	6.5	1.8	2.0	1.0	75.0	2.6	22.4	0.087	0.505	22.155969	-98.154629
T. Der. Pánuco	103.00	3	0	6753	2.1	70.8	3.1	11.2	2.0	6.4	1.6	2.1	0.7	72.9	3.1	24.0	0.089	0.503	22.158608	-98.149580
T. C. Anáhuac - El Prieto	128.40	1	1	5214	0.9	78.2	2.2	10.3	2.2	2.8	1.2	1.8	0.4	79.1	2.2	18.7	0.086	0.502	22.214623	-97.949045
T. C. Anáhuac - El Prieto	128.40	1	2	5168	0.9	76.4	2.3	11.3	2.4	3.0	1.3	2.0	0.4	77.3	2.3	20.4	0.080	0.502	22.214620	-97.949045
T. C. Anáhuac - El Prieto	128.40	3	1	6579	1.4	72.3	2.0	11.0	2.4	5.2	2.3	2.6	0.8	73.7	2.0	24.3	0.094	0.506	22.217333	-97.937611
T. C. Anáhuac - El Prieto	128.40	3	2	6736	1.4	69.6	2.2	12.6	2.5	5.4	2.5	3.0	0.8	71.0	2.2	26.8	0.098	0.506	22.217333	-97.937611

SAN LUIS POTOSI

5 CARR: Cd. Valles - Tampico

CLAVE: 00138

RUTA: MEX-070

AÑO: 2016

LUGAR	ESTACION				CLASIFICACION VEHICULAR EN PORCIENTO													COORDENADAS		
	KM	TE	SC	TDPA	M	A	B	C2	C3	T3S2	T3S3	T3S2R4	OTROS	A	B	C	K'	D	LATITUD	LONGITUD
Lim. Edos. Term. Ver. Ppia. Tamps.	133.81																			
Tampico	138.00	1	1	9876	3.3	63.0	2.6	13.3	2.7	7.5	3.6	3.6	0.4	66.3	2.6	31.1	0.062	0.549	22.226829	-97.894394
Tampico	138.00	1	2	8111	2.1	70.8	1.8	13.1	1.8	5.1	2.5	2.4	0.4	72.9	1.8	25.3	0.074	0.549	22.226812	-97.894393

6 CARR: El Clarin - Agua Buena

CLAVE: 24283

RUTA: MEX-070

AÑO: 2016

LUGAR	ESTACION				CLASIFICACION VEHICULAR EN PORCIENTO													COORDENADAS		
	KM	TE	SC	TDPA	M	A	B	C2	C3	T3S2	T3S3	T3S2R4	OTROS	A	B	C	K'	D	LATITUD	LONGITUD
T. C. Cd. Valles - San Luis Potosí	0.00	3	0	930	7.3	77.2	1.6	12.4	0.6	0.8	0.1	0.0	0.0	84.5	1.6	13.9	0.100	0.514	21.890086	-99.383133
Agua Buena	11.23	1	0	3459	16.2	73.8	0.2	6.6	0.4	2.0	0.4	0.1	0.3	90.0	0.2	9.8	0.079	0.506	21.953416	-99.390310

7 CARR: Ent. Ahualulco - Ent. La Bonita

CLAVE: 24258

RUTA: MEX-063

AÑO: 2016

LUGAR	ESTACION				CLASIFICACION VEHICULAR EN PORCIENTO													COORDENADAS		
	KM	TE	SC	TDPA	M	A	B	C2	C3	T3S2	T3S3	T3S2R4	OTROS	A	B	C	K'	D	LATITUD	LONGITUD
T. C. San Luis Potosí - Ent. Arcinas	0.00	3	0	3760	1.9	82.1	1.5	8.8	1.2	2.0	0.9	0.9	0.7	84.0	1.5	14.5	0.086	0.505	22.320611	-101.165194
Ahualulco	11.00	3	0	4438	4.0	78.9	1.1	14.8	0.6	0.3	0.3	0.0	0.0	82.9	1.1	16.0	0.104	0.504	22.411569	-101.159291
Moctezuma	59.00	1	0	1948	1.2	81.3	1.4	13.2	1.2	1.1	0.4	0.2	0.0	82.5	1.4	16.1	0.076	0.507	22.733842	-101.085746
Charcas	100.00	1	0	2038	6.5	78.5	2.0	10.2	0.8	1.1	0.5	0.4	0.0	85.0	2.0	13.0	0.086	0.515	23.109389	-101.103028
Charcas	100.00	3	0	1573	19.9	65.7	2.5	10.5	0.7	0.3	0.1	0.2	0.1	85.6	2.5	11.9	0.100	0.501	23.130734	-101.100028
T. C. San Luis Potosí - Matehuala	169.90	1	0	1524	4.8	71.1	1.9	19.5	1.1	1.1	0.4	0.1	0.0	75.9	1.9	22.2	0.099	0.503	23.481528	-100.621972

8 CARR: Ent. de Zaragoza - San Felipe

CLAVE: 00240

RUTA: MEX-037

AÑO: 2016

LUGAR	ESTACION				CLASIFICACION VEHICULAR EN PORCIENTO													COORDENADAS		
	KM	TE	SC	TDPA	M	A	B	C2	C3	T3S2	T3S3	T3S2R4	OTROS	A	B	C	K'	D	LATITUD	LONGITUD
T. C. Querétaro - San Luis Potosí	0.00	3	0	10565	0.7	58.4	7.1	12.5	2.7	13.2	2.9	1.6	0.9	59.1	7.1	33.8	0.071	0.506	21.965193	-100.819331
Lim. Edos. Term. S. L. P. Ppia. Gto.	32.00																			
San Felipe	72.00	1	0	7596	0.8	61.9	1.5	9.2	3.3	18.4	2.6	1.5	0.8	62.7	1.5	35.8	0.070	0.510	21.481621	-101.152807

SAN LUIS POTOSI

9 CARR: Ent. Tula - Cd. Victoria

CLAVE: 00179

RUTA: MEX-101

AÑO: 2016

LUGAR	ESTACION				CLASIFICACION VEHICULAR EN PORCIENTO													COORDENADAS		
	KM	TE	SC	TDPA	M	A	B	C2	C3	T3S2	T3S3	T3S2R4	OTROS	A	B	C	K'	D	LATITUD	LONGITUD
T. C. Antiguo Morelos - El Huizache	0.00	3	0	3642	0.9	42.0	4.1	5.7	2.3	19.0	7.1	16.6	2.3	42.9	4.1	53.0	0.063	0.504	22.737547	-99.968385
Lim. Edos. Term. S. L. P. Ppia. Tamps.	2.40																			
T. Der. Tula (1º Acceso)	38.00	1	0	4146	0.9	46.6	3.1	9.3	2.2	17.0	5.8	14.0	1.1	47.5	3.1	49.4	0.068	0.500	22.979914	-99.737547
T. Der. Tula (2º Acceso)	41.95	3	0	3748	0.9	41.9	4.2	11.2	2.5	19.1	5.0	14.1	1.1	42.8	4.2	53.0	0.070	0.518	23.020591	-99.714362
Jaumave	112.68	1	0	4733	0.9	51.3	3.5	8.0	2.0	15.2	5.4	13.0	0.7	52.2	3.5	44.3	0.055	0.509	23.400360	-99.401729
Jaumave	112.68	3	0	4828	1.1	52.4	2.8	7.4	1.8	14.8	4.6	14.1	1.0	53.5	2.8	43.7	0.063	0.515	23.418572	-99.373866
Cd. Victoria	180.00	1	1	3392	13.8	76.5	0.1	7.9	0.3	0.8	0.4	0.1	0.1	90.3	0.1	9.6	0.131	0.520	23.710649	-99.176606
Cd. Victoria	180.00	1	2	3131	10.3	78.9	0.1	9.0	0.3	0.8	0.4	0.1	0.1	89.2	0.1	10.7	0.082	0.520	23.710534	-99.176604

10 CARR: Jalpan de Serra - Rioverde

CLAVE: 00265

RUTA: MEX-069

AÑO: 2016

LUGAR	ESTACION				CLASIFICACION VEHICULAR EN PORCIENTO													COORDENADAS		
	KM	TE	SC	TDPA	M	A	B	C2	C3	T3S2	T3S3	T3S2R4	OTROS	A	B	C	K'	D	LATITUD	LONGITUD
Jalpan de Serra	0.00	3	0	6814	1.3	84.3	3.1	6.3	0.7	2.8	0.6	0.1	0.8	85.6	3.1	11.3	0.076	0.501	21.239650	-99.482417
T. Izq. Conca	35.01	1	0	2388	2.1	84.3	1.2	9.1	0.8	1.6	0.4	0.1	0.4	86.4	1.2	12.4	0.084	0.503	21.444498	-99.626659
Arroyo Seco	48.60	1	0	1623	2.1	82.7	1.8	11.1	1.0	1.1	0.2	0.0	0.0	84.8	1.8	13.4	0.087	0.504	21.540522	-99.686825
Lim. Edos. Term. Qro. Ppia. S. L. P.	52.27																			
San Ciro de Acosta	69.42	1	0	1806	5.9	76.5	0.5	13.4	1.2	1.6	0.8	0.0	0.1	82.4	0.5	17.1	0.087	0.501	21.648119	-99.808664
San Ciro de Acosta	69.42	3	0	2659	4.9	81.1	0.7	9.0	1.2	2.2	0.6	0.0	0.3	86.0	0.7	13.3	0.080	0.503	21.661320	-99.827162
Rioverde	105.43	1	0	5552	6.5	76.3	0.6	11.9	0.8	2.9	0.5	0.2	0.3	82.8	0.6	16.6	0.073	0.504	21.884209	-99.976512

11 CARR: Libramiento de Cd. Valles

CLAVE: 24205

RUTA: MEX-070

AÑO: 2016

LUGAR	ESTACION				CLASIFICACION VEHICULAR EN PORCIENTO													COORDENADAS		
	KM	TE	SC	TDPA	M	A	B	C2	C3	T3S2	T3S3	T3S2R4	OTROS	A	B	C	K'	D	LATITUD	LONGITUD
T. C. Cd. Valles - San Luis Potosí	0.00	3	0	10104	3.3	75.3	1.4	10.5	1.9	4.7	1.0	1.1	0.8	78.6	1.4	20.0	0.082	0.506	21.984345	-99.034804
T. C. Cd. Valles - Tampico	11.54	1	0	3714	1.8	59.2	4.5	13.8	10.2	5.0	2.9	1.9	0.7	61.0	4.5	34.5	0.079	0.515	21.971961	-98.966156

12 CARR: Libramiento de Villa de Reyes

CLAVE: 24010

RUTA: MEX-037

AÑO: 2016

LUGAR	ESTACION				CLASIFICACION VEHICULAR EN PORCIENTO													COORDENADAS		
	KM	TE	SC	TDPA	M	A	B	C2	C3	T3S2	T3S3	T3S2R4	OTROS	A	B	C	K'	D	LATITUD	LONGITUD
T. C. Ent. Zaragoza - San Felipe	0.00	3	0	4469	4.3	66.1	1.8	20.2	1.7	4.5	0.8	0.5	0.1	70.4	1.8	27.8	0.084	0.568	21.811556	-100.929869
T. C. Villa de Reyes - Bledos	3.10																			

SAN LUIS POTOSI

13 CARR: Libramiento Villa de Arriaga

CLAVE: 24009

RUTA: MEX-080

AÑO: 2016

LUGAR	ESTACION				CLASIFICACION VEHICULAR EN PORCIENTO													COORDENADAS		
	KM	TE	SC	TDPA	M	A	B	C2	C3	T3S2	T3S3	T3S2R4	OTROS	A	B	C	K'	D	LATITUD	LONGITUD
T. C. San Luis Potosí - Lagos de Moreno	0.00	3	0	3036	0.4	68.0	3.7	7.1	4.6	8.8	5.0	1.4	1.0	68.4	3.7	27.9	0.078	0.510	21.924039	-101.371562
T. C. San Luis Potosí - Lagos de Moreno	5.00																			

14 CARR: Matehuala - Ent. Puerto México

CLAVE: 00405

RUTA: MEX-057

AÑO: 2016

LUGAR	ESTACION				CLASIFICACION VEHICULAR EN PORCIENTO													COORDENADAS		
	KM	TE	SC	TDPA	M	A	B	C2	C3	T3S2	T3S3	T3S2R4	OTROS	A	B	C	K'	D	LATITUD	LONGITUD
Matehuala	0.00	3	1	6862	7.7	65.5	1.9	10.0	1.5	9.2	2.3	1.2	0.7	73.2	1.9	24.9	0.076	0.506	23.671416	-100.630766
Matehuala	0.00	3	2	6693	8.8	62.6	2.1	10.7	1.6	9.9	2.4	1.2	0.7	71.4	2.1	26.5	0.067	0.506	23.671495	-100.630964
T. Izq. Cedral	8.47	1	1	4591	3.6	60.2	3.4	12.8	1.9	13.4	2.3	1.5	0.9	63.8	3.4	32.8	0.065	0.503	23.692180	-100.620477
T. Izq. Cedral	8.47	1	2	4652	2.1	56.0	3.9	14.7	2.1	16.1	2.6	1.6	0.9	58.1	3.9	38.0	0.059	0.503	23.692195	-100.620497
T. Izq. Cedral	8.47	3	1	2426	1.9	46.6	4.6	15.2	1.7	23.0	4.0	2.3	0.7	48.5	4.6	46.9	0.073	0.501	23.700417	-100.616361
T. Izq. Cedral	8.47	3	2	2419	1.3	44.1	5.8	15.5	2.0	23.6	4.4	2.5	0.8	45.4	5.8	48.8	0.066	0.501	23.700410	-100.616747
Lim. Edos. Term. S. L. P. Ppia. N. L.	24.64																			
Santa Ana	59.65	1	1	6859	0.9	36.8	4.7	8.2	2.4	34.5	4.7	6.2	1.6	37.7	4.7	57.6	0.068	0.507	24.070288	-100.390481
Santa Ana	59.65	1	2	6672	1.1	27.5	5.4	8.8	2.4	41.2	5.1	6.7	1.8	28.6	5.4	66.0	0.068	0.507	24.070280	-100.390480
T. Der. Linares	128.99	3	1	7317	1.9	36.5	5.3	8.8	2.5	33.1	4.7	5.6	1.6	38.4	5.3	56.3	0.066	0.503	24.681000	-100.300722
T. Der. Linares	128.99	3	2	7233	2.3	28.3	6.0	10.2	2.7	37.3	5.0	6.4	1.8	30.6	6.0	63.4	0.069	0.503	24.681169	-100.300332
San Rafael	177.18	1	1	7061	1.4	42.8	5.2	8.1	2.5	28.9	4.8	5.4	0.9	44.2	5.2	50.6	0.064	0.500	25.017333	-100.538111
San Rafael	177.18	1	2	7064	1.2	35.9	5.8	8.8	2.6	33.6	5.0	6.0	1.1	37.1	5.8	57.1	0.078	0.500	25.017361	-100.537944
Ent. Puerto México	205.97																			

15 CARR: Portezuelo - Cd. Valles

CLAVE: 00023

RUTA: MEX-085

AÑO: 2016

LUGAR	ESTACION				CLASIFICACION VEHICULAR EN PORCIENTO													COORDENADAS		
	KM	TE	SC	TDPA	M	A	B	C2	C3	T3S2	T3S3	T3S2R4	OTROS	A	B	C	K'	D	LATITUD	LONGITUD
Portezuelo	0.00	3	0	5608	1.2	84.1	1.0	8.0	1.1	3.1	0.9	0.1	0.5	85.3	1.0	13.7	0.080	0.504	20.488200	-99.298492
T. Der. Tasquillo (2º Acceso)	10.50	1	0	4394	2.4	85.7	1.5	5.6	1.3	1.6	1.1	0.2	0.6	88.1	1.5	10.4	0.085	0.501	20.543948	-99.319152
T. Izq. Zimapán (1º Acceso)	32.00	1	0	5364	1.8	84.9	1.0	7.3	1.1	2.5	0.9	0.1	0.4	86.7	1.0	12.3	0.077	0.511	20.699519	-99.333338
T. Izq. Zimapán (1º Acceso)	32.00	3	0	2661	1.4	86.2	1.2	6.5	1.5	1.9	1.0	0.1	0.2	87.6	1.2	11.2	0.070	0.522	20.705881	-99.336131
La Estancia	41.00	3	0	1755	1.0	82.0	1.5	11.0	1.6	1.6	0.9	0.1	0.3	83.0	1.5	15.5	0.091	0.505	20.777601	-99.310205
Trancas	51.00	3	0	1494	1.0	80.7	1.0	11.9	1.8	2.3	1.1	0.1	0.1	81.7	1.0	17.3	0.084	0.507	20.803063	-99.262536
Jacala	98.60	3	0	2295	1.1	90.5	0.5	4.8	1.0	1.5	0.5	0.0	0.1	91.6	0.5	7.9	0.076	0.509	21.002662	-99.184733
Zacate Grande	143.10	1	0	1149	1.2	76.5	1.2	13.5	3.6	2.4	0.7	0.3	0.6	77.7	1.2	21.1	0.075	0.504	21.113933	-99.004613

SAN LUIS POTOSI

15 CARR: Portezuelo - Cd. Valles

CLAVE: 00023

RUTA: MEX-085

AÑO: 2016

LUGAR	ESTACION				CLASIFICACION VEHICULAR EN PORCIENTO														COORDENADAS	
	KM	TE	SC	TDPA	M	A	B	C2	C3	T3S2	T3S3	T3S2R4	OTROS	A	B	C	K'	D	LATITUD	LONGITUD
T. Izq. Pisafleres	154.00	3	0	1862	2.1	85.1	1.1	7.6	1.3	1.7	0.6	0.1	0.4	87.2	1.1	11.7	0.077	0.500	21.154453	-98.948594
Lim. Edos. Term. Hgo. Ppia. S. L. P.	168.63																			
Tamazunchale	192.80	1	0	5300	15.3	68.7	1.6	8.5	0.8	3.8	0.7	0.1	0.5	84.0	1.6	14.4	0.079	0.502	21.259723	-98.801808
T. Izq. Xilitla	228.75	1	0	5347	5.8	76.0	1.8	9.0	2.5	3.3	0.8	0.2	0.6	81.8	1.8	16.4	0.083	0.501	21.443418	-98.925818
T. Izq. Xilitla	228.75	3	0	4784	4.9	73.7	2.1	9.4	2.4	4.4	1.6	0.4	1.1	78.6	2.1	19.3	0.074	0.505	21.445713	-98.929010
T. Izq. Aquismón	252.50	1	0	5883	3.8	77.1	1.3	10.2	2.0	3.7	1.1	0.2	0.6	80.9	1.3	17.8	0.082	0.501	21.622356	-98.987240
Agua Hedionda	265.00	1	0	4947	1.9	76.0	1.9	11.5	3.1	3.0	1.5	0.3	0.8	77.9	1.9	20.2	0.086	0.504	21.727877	-98.964049
Cd. Valles	300.00	1	0	9518	5.0	74.4	2.8	7.7	3.0	4.6	1.1	0.9	0.5	79.4	2.8	17.8	0.072	0.516	21.958828	-98.998856

16 CARR: Querétaro - San Luis Potosi

CLAVE: 00165

RUTA: MEX-057

AÑO: 2016

LUGAR	ESTACION				CLASIFICACION VEHICULAR EN PORCIENTO														COORDENADAS	
	KM	TE	SC	TDPA	M	A	B	C2	C3	T3S2	T3S3	T3S2R4	OTROS	A	B	C	K'	D	LATITUD	LONGITUD
Querétaro	0.00																			
T. Der. Libramiento de Querétaro	6.28	3	1	48205	0.8	89.6	0.6	3.5	0.9	2.0	1.6	0.2	0.8	90.4	0.6	9.0	0.065	0.505	20.633112	-100.427063
T. Der. Libramiento de Querétaro	6.28	3	2	50591	0.9	88.8	0.6	3.7	1.1	2.1	1.7	0.2	0.9	89.7	0.6	9.7	0.064	0.505	20.633112	-100.427063
T. Izq. Juriquilla	15.63	3	1	33469	0.6	82.5	1.9	10.0	1.5	2.4	0.7	0.3	0.1	83.1	1.9	15.0	0.097	0.513	20.704007	-100.437374
T. Izq. Juriquilla	15.63	3	2	33318	0.4	86.1	0.2	3.1	1.0	4.0	3.0	0.6	1.6	86.5	0.2	13.3	0.071	0.513	20.704007	-100.437374
T. Izq. San Miguel de Allende	28.53	1	1	23278	0.6	79.6	2.0	10.3	1.8	3.6	1.0	0.8	0.3	80.2	2.0	17.8	0.102	0.505	20.807795	-100.448950
T. Izq. San Miguel de Allende	28.53	1	2	23999	0.3	78.4	2.1	10.9	1.9	3.9	1.2	1.0	0.3	78.7	2.1	19.2	0.084	0.505	20.807795	-100.448950
T. Izq. San Miguel de Allende	28.53	3	1	17215	0.8	65.3	3.1	10.4	2.9	11.2	2.7	2.6	1.0	66.1	3.1	30.8	0.064	0.503	20.832610	-100.441638
T. Izq. San Miguel de Allende	28.53	3	2	16372	0.9	61.0	3.3	11.8	3.1	13.0	3.0	2.9	1.0	61.9	3.3	34.8	0.075	0.503	20.832610	-100.441638
Lim. Edos. Term. Qro. Ppia. Gto.	36.70																			
X. C. San José Iturbide - El Arenal	46.83	1	1	16603	1.1	66.9	3.2	4.1	2.9	14.6	2.9	3.4	0.9	68.0	3.2	28.8	0.064	0.502	20.969328	-100.429303
X. C. San José Iturbide - El Arenal	46.83	1	2	16527	1.1	63.0	3.7	4.7	3.3	16.4	3.2	3.5	1.1	64.1	3.7	32.2	0.075	0.502	20.969328	-100.429303
X. C. Ent. San Miguel de Allende - Dr. Mora	61.93	1	1	13956	2.0	63.0	5.2	7.4	3.3	11.2	4.6	2.4	0.9	65.0	5.2	29.8	0.065	0.519	21.070964	-100.505406
X. C. Ent. San Miguel de Allende - Dr. Mora	61.93	1	2	13556	2.6	59.9	5.3	7.8	3.5	12.4	4.8	2.6	1.1	62.5	5.3	32.2	0.059	0.519	21.070964	-100.505406
X. C. San Luis de La Paz - Guanajuato	86.68	1	1	13508	1.1	69.0	4.2	5.3	2.5	12.6	2.6	2.2	0.5	70.1	4.2	25.7	0.061	0.506	21.270194	-100.589394
X. C. San Luis de La Paz - Guanajuato	86.68	1	2	13712	1.1	66.2	4.6	5.7	2.9	13.4	3.1	2.5	0.5	67.3	4.6	28.1	0.075	0.506	21.270194	-100.589394
T. Izq. San Diego de La Unión	119.07	3	1	9973	2.4	66.3	3.6	5.2	3.6	11.6	4.1	2.3	0.9	68.7	3.6	27.7	0.070	0.509	21.539689	-100.746603
T. Izq. San Diego de La Unión	119.07	3	2	12388	1.3	63.9	3.9	5.4	4.1	13.2	4.4	2.7	1.1	65.2	3.9	30.9	0.061	0.509	21.539689	-100.746603
Lim. Edos. Term. Gto. Ppia. S. L. P.	124.74																			
T. Izq. Santa María del Río	155.88	3	1	12254	1.3	54.0	5.2	8.8	3.0	18.7	3.9	4.4	0.7	55.3	5.2	39.5	0.062	0.516	21.819694	-100.728056
T. Izq. Santa María del Río	155.88	3	2	11501	0.9	50.6	5.8	9.2	3.5	20.6	4.3	4.4	0.7	51.5	5.8	42.7	0.070	0.516	21.820731	-100.729528

SAN LUIS POTOSI

16 CARR: Querétaro - San Luis Potosi

CLAVE: 00165

RUTA: MEX-057

AÑO: 2016

LUGAR	ESTACION				CLASIFICACION VEHICULAR EN PORCIENTO										COORDENADAS					
	KM	TE	SC	TDPA	M	A	B	C2	C3	T3S2	T3S3	T3S2R4	OTROS	A	B	C	K'	D	LATITUD	LONGITUD
T. Izq. Villa de Reyes	176.35	1	1	14539	1.1	49.9	5.4	9.8	2.8	21.9	3.9	4.6	0.6	51.0	5.4	43.6	0.060	0.508	21.958837	-100.810551
T. Izq. Villa de Reyes	176.35	1	2	15010	0.9	45.0	5.8	10.3	3.2	24.8	4.2	5.2	0.6	45.9	5.8	48.3	0.066	0.508	21.958836	-100.810524
T. Izq. Villa de Reyes	176.35	3	1	20944	0.8	55.0	4.1	10.4	3.0	20.3	2.6	3.3	0.5	55.8	4.1	40.1	0.073	0.501	21.973420	-100.818281
T. Izq. Villa de Reyes	176.35	3	2	21041	0.8	51.8	4.2	12.0	3.3	20.9	2.8	3.7	0.5	52.6	4.2	43.2	0.086	0.501	21.973056	-100.818333
X. C. Libramiento de San Luis Potosi	184.80	1	1	23106	1.2	66.0	2.4	10.8	3.2	10.6	2.3	2.7	0.8	67.2	2.4	30.4	0.076	0.522	22.026186	-100.846928
X. C. Libramiento de San Luis Potosi	184.80	1	2	25243	1.0	63.5	2.7	11.5	3.6	11.4	2.7	2.8	0.8	64.5	2.7	32.8	0.096	0.522	22.026145	-100.847077
X. Periférico de San Luis Potosi (Lateral)	197.50	1	1	15130	4.6	68.8	2.2	11.8	2.9	4.8	2.4	1.2	1.3	73.4	2.2	24.4	0.122	0.514	22.122831	-100.914021
X. Periférico de San Luis Potosi (Central)	197.50	1	1	34204	1.0	86.8	1.1	2.6	0.9	2.2	3.7	1.1	0.6	87.8	1.1	11.1	0.066	0.510	22.122527	-100.913801
X. Periférico de San Luis Potosi (Central)	197.50	1	2	32851	0.9	86.1	1.2	2.7	0.9	2.4	4.0	1.2	0.6	87.0	1.2	11.8	0.070	0.510	22.122194	-100.913650
X. Periférico de San Luis Potosi (Lateral)	197.50	1	2	14314	5.7	65.7	2.4	12.6	3.2	5.2	2.6	1.3	1.3	71.4	2.4	26.2	0.104	0.514	22.121756	-100.913628
San Luis Potosi	201.66																			

17 CARR: Ramal a Aeropuerto de S. L. P.

CLAVE: 24206

RUTA: MEX-057

AÑO: 2016

LUGAR	ESTACION				CLASIFICACION VEHICULAR EN PORCIENTO										COORDENADAS					
	KM	TE	SC	TDPA	M	A	B	C2	C3	T3S2	T3S3	T3S2R4	OTROS	A	B	C	K'	D	LATITUD	LONGITUD
T. C. San Luis Potosi - Matehuala	0.00	3	0	5251	3.7	81.9	0.2	8.3	2.1	2.4	0.5	0.7	0.2	85.6	0.2	14.2	0.067	0.506	22.223124	-100.913638
Aeropuerto de S. L. P.	6.00																			

18 CARR: Ramal a Ojo de Agua

CLAVE: 24023

RUTA: MEX-062

AÑO: 2016

LUGAR	ESTACION				CLASIFICACION VEHICULAR EN PORCIENTO										COORDENADAS					
	KM	TE	SC	TDPA	M	A	B	C2	C3	T3S2	T3S3	T3S2R4	OTROS	A	B	C	K'	D	LATITUD	LONGITUD
T. C. Ent. Carbonera - Ent. San Tiburcio	0.00	3	0	2802	8.3	77.6	0.3	11.5	0.3	1.8	0.1	0.0	0.1	85.9	0.3	13.8	0.090	0.507	23.718556	-100.650778
T. C. Ent. Carbonera - Ent. San Tiburcio	6.23																			

19 CARR: Ramal a Rayón

CLAVE: 24626

RUTA: MEX-070

AÑO: 2016

LUGAR	ESTACION				CLASIFICACION VEHICULAR EN PORCIENTO										COORDENADAS					
	KM	TE	SC	TDPA	M	A	B	C2	C3	T3S2	T3S3	T3S2R4	OTROS	A	B	C	K'	D	LATITUD	LONGITUD
T. C. (Cd. Valles - San Luis Potosi)	0.00																			
Rayón	1.50	1	0	4028	3.7	79.7	0.1	13.3	0.5	2.4	0.1	0.0	0.2	83.4	0.1	16.5	0.090	0.507	21.848412	-99.629346

SAN LUIS POTOSI

20 CARR: San Juan del Río - Xilitla

CLAVE: 00183

RUTA: MEX-120

AÑO: 2016

LUGAR	ESTACION				CLASIFICACION VEHICULAR EN PORCIENTO											COORDENADAS				
	KM	TE	SC	TDPA	M	A	B	C2	C3	T3S2	T3S3	T3S2R4	OTROS	A	B	C	K'	D	LATITUD	LONGITUD
San Juan del Río	0.00																			
T. Der. Libramiento de San Juan del Río	5.20	3	1	11363	1.3	88.5	1.6	3.5	1.2	1.6	1.4	0.4	0.5	89.8	1.6	8.6	0.115	0.501	20.427274	-99.974224
T. Der. Libramiento de San Juan del Río	5.20	3	2	12672	1.1	88.2	1.7	3.6	1.4	1.6	1.5	0.4	0.5	89.3	1.7	9.0	0.107	0.501	20.427274	-99.974224
T. Der. Tequisquiapan	19.80	1	1	9555	1.0	87.6	2.2	5.8	0.9	1.2	0.7	0.2	0.4	88.6	2.2	9.2	0.120	0.513	20.512767	-99.906428
T. Der. Tequisquiapan	19.80	1	2	10015	1.0	86.8	2.4	6.1	1.1	1.3	0.7	0.2	0.4	87.8	2.4	9.8	0.107	0.513	20.512767	-99.906428
T. Der. Tequisquiapan	19.80	3	1	9081	1.1	84.8	2.2	6.8	1.7	1.6	1.1	0.4	0.3	85.9	2.2	11.9	0.104	0.502	20.540831	-99.901564
T. Der. Tequisquiapan	19.80	3	2	9525	0.9	83.7	2.4	7.4	1.9	1.9	1.1	0.4	0.3	84.6	2.4	13.0	0.113	0.502	20.540831	-99.901564
Ezequiel Montes	36.50	1	1	7418	1.0	85.2	1.7	6.5	2.4	2.2	0.1	0.4	0.5	86.2	1.7	12.1	0.095	0.503	20.643388	-99.906178
Ezequiel Montes	36.50	1	2	7535	1.1	84.1	1.9	6.9	2.6	2.4	0.1	0.4	0.5	85.2	1.9	12.9	0.094	0.503	20.643388	-99.906178
Ezequiel Montes	36.50	3	0	11657	1.0	79.4	2.1	9.5	1.7	4.2	1.1	0.2	0.8	80.4	2.1	17.5	0.081	0.500	20.676268	-99.891787
Cadereyta	47.90	3	0	9530	0.5	82.6	2.0	6.0	2.1	3.7	1.9	0.5	0.7	83.1	2.0	14.9	0.085	0.501	20.702175	-99.804267
Vizarrón de Montes	73.50	3	0	3935	0.8	74.4	2.3	11.1	4.7	3.4	2.2	0.5	0.6	75.2	2.3	22.5	0.080	0.511	20.850091	-99.712700
T. Der. San Joaquín	79.50	3	0	1308	0.3	78.1	2.0	14.8	2.7	1.6	0.3	0.0	0.2	78.4	2.0	19.6	0.097	0.522	20.884726	-99.707101
T. Izq. Higuerillas	89.10	3	0	1403	0.9	77.5	2.2	14.5	2.6	1.6	0.5	0.0	0.2	78.4	2.2	19.4	0.124	0.502	20.951015	-99.749015
T. Izq. Peñamiller	103.00	3	0	1534	0.9	79.8	3.3	11.0	2.3	2.1	0.4	0.0	0.2	80.7	3.3	16.0	0.127	0.507	21.039880	-99.739640
Pinal de Amoles	140.00	3	0	2001	0.7	83.7	2.4	8.7	1.5	1.8	0.9	0.0	0.3	84.4	2.4	13.2	0.111	0.504	21.138897	-99.620328
Jalpan de Serra	179.30	3	0	6615	1.4	89.7	1.2	2.9	0.4	3.4	0.4	0.1	0.5	91.1	1.2	7.7	0.089	0.501	21.208118	-99.453282
Landa de Matamoros	201.60	3	0	2908	1.2	82.9	1.6	11.1	1.0	1.5	0.5	0.0	0.2	84.1	1.6	14.3	0.084	0.501	21.187132	-99.311157
El Lobo	236.40	3	0	901	2.1	82.1	2.4	7.0	2.5	2.4	0.6	0.0	0.9	84.2	2.4	13.4	0.094	0.515	21.292266	-99.116391
Lim. Edos. Term. Qro. Ppia. S. L. P.	238.33																			
Xilitla	266.40	1	0	1709	6.1	77.7	0.8	11.5	1.3	1.7	0.4	0.1	0.4	83.8	0.8	15.4	0.088	0.523	21.379032	-98.998812
T. C. Portezuelo - Cd. Valles	276.98	1	0	2823	7.2	77.4	0.8	10.1	1.7	1.8	0.6	0.1	0.3	84.6	0.8	14.6	0.088	0.506	21.443140	-98.929475

21 CARR: San Luis Potosí - Ent. Arcinas

CLAVE: 00134

RUTA: MEX-049

AÑO: 2016

LUGAR	ESTACION				CLASIFICACION VEHICULAR EN PORCIENTO											COORDENADAS				
	KM	TE	SC	TDPA	M	A	B	C2	C3	T3S2	T3S3	T3S2R4	OTROS	A	B	C	K'	D	LATITUD	LONGITUD
T. C. San Luis Potosí - Matehuala	0.00																			
T. Izq. Periférico de San Luis Potosí	9.35	3	1	11188	6.1	80.2	1.0	8.0	1.3	1.6	0.8	0.8	0.2	86.3	1.0	12.7	0.111	0.503	22.203638	-101.027071
T. Izq. Periférico de San Luis Potosí	9.35	3	2	11345	5.7	78.9	1.1	9.0	1.5	1.7	0.9	1.0	0.2	84.6	1.1	14.3	0.087	0.503	22.203713	-101.026973
Mexquitic	22.50	1	1	6208	3.9	69.7	2.8	9.5	2.4	6.3	2.0	2.7	0.7	73.6	2.8	23.6	0.125	0.503	22.249403	-101.105722
Mexquitic	22.50	1	2	6271	4.1	66.2	3.1	10.6	2.8	7.1	2.4	2.9	0.8	70.3	3.1	26.6	0.121	0.503	22.249524	-101.105651
T. Der. Charcas	30.90	1	1	6211	1.8	67.4	3.5	9.1	3.1	8.2	2.4	3.8	0.7	69.2	3.5	27.3	0.097	0.503	22.309579	-101.157868
T. Der. Charcas	30.90	1	2	6147	1.8	64.5	3.9	9.8	3.4	9.0	2.7	4.1	0.8	66.3	3.9	29.8	0.094	0.503	22.309636	-101.157812

SAN LUIS POTOSI

21 CARR : San Luis Potosí - Ent. Arcinas

CLAVE: 00134

RUTA: MEX-049

AÑO: 2016

LUGAR	ESTACION				CLASIFICACION VEHICULAR EN PORCIENTO													COORDENADAS		
	KM	TE	SC	TDPA	M	A	B	C2	C3	T3S2	T3S3	T3S2R4	OTROS	A	B	C	K'	D	LATITUD	LONGITUD
Lim. Edos. Term. S. L. P. Ppia. Zac.	55.13																			
Lim. Edos. Term. Zac. Ppia. S. L. P.	89.30																			
T. Der. Salinas	99.00	1	1	3572	1.8	54.5	5.9	9.9	4.2	12.9	3.8	6.4	0.6	56.3	5.9	37.8	0.077	0.502	22.602587	-101.705023
T. Der. Salinas	99.00	1	2	3548	1.6	50.5	6.1	10.5	4.4	15.3	4.1	6.9	0.6	52.1	6.1	41.8	0.094	0.502	22.602462	-101.705102
T. Der. Salinas	99.00	3	1	4012	2.0	57.6	5.7	9.9	3.9	11.6	3.2	5.5	0.6	59.6	5.7	34.7	0.082	0.500	22.619789	-101.743662
T. Der. Salinas	99.00	3	2	4015	2.6	52.1	5.8	10.6	4.5	13.6	3.6	6.6	0.6	54.7	5.8	39.5	0.074	0.500	22.620004	-101.743633
Lim. Edos. Term. S. L. P. Ppia. Zac.	122.47																			
T. Izq. Pánfilo Natera	139.00	1	1	3548	0.8	58.2	5.1	8.4	3.8	13.3	3.7	5.9	0.8	59.0	5.1	35.9	0.072	0.503	22.678964	-102.097733
T. Izq. Pánfilo Natera	139.00	1	2	3505	0.6	55.2	5.6	8.6	4.2	14.6	4.0	6.4	0.8	55.8	5.6	38.6	0.078	0.503	22.678806	-102.097806
Ent. Arcinas	162.98	1	1	4003	0.5	62.3	5.1	8.3	3.3	11.4	3.3	4.9	0.9	62.8	5.1	32.1	0.085	0.521	22.719528	-102.322639
Ent. Arcinas	162.98	1	2	3673	0.5	58.6	5.1	8.7	3.6	13.5	3.9	5.5	0.6	59.1	5.1	35.8	0.085	0.521	22.719292	-102.322734

22 CARR : San Luis Potosí - Lagos de Moreno

CLAVE: 00133

RUTA: MEX-070-080

AÑO: 2016

LUGAR	ESTACION				CLASIFICACION VEHICULAR EN PORCIENTO													COORDENADAS		
	KM	TE	SC	TDPA	M	A	B	C2	C3	T3S2	T3S3	T3S2R4	OTROS	A	B	C	K'	D	LATITUD	LONGITUD
San Luis Potosí	0.00	3	1	15503	0.6	93.0	0.6	4.3	0.4	0.4	0.4	0.1	0.2	93.6	0.6	5.8	0.103	0.541	22.133996	-101.030774
San Luis Potosí	0.00	3	2	18271	0.6	92.4	0.7	4.8	0.4	0.4	0.4	0.1	0.2	93.0	0.7	6.3	0.070	0.541	22.133989	-101.030774
X. Periférico de San Luis Potosí	8.41	3	0	11342	1.9	79.4	1.5	7.3	2.4	5.3	1.2	0.5	0.5	81.3	1.5	17.2	0.087	0.506	22.130436	-101.036313
El Tepetate	41.90	1	0	5039	1.6	73.3	2.9	9.9	2.9	5.9	2.1	0.9	0.5	74.9	2.9	22.2	0.092	0.529	22.022646	-101.228576
El Tepetate	41.90	3	0	4591	1.5	66.1	3.5	10.0	4.3	8.4	4.0	1.2	1.0	67.6	3.5	28.9	0.067	0.501	22.007066	-101.250176
Villa de Arriaga	61.90	3	0	3567	1.3	61.4	3.3	9.1	4.1	10.7	5.0	3.1	2.0	62.7	3.3	34.0	0.069	0.508	21.896111	-101.414694
Lim. Edos. Term. S. L. P. Ppia. Zac.	70.23																			
Lim. Edos. Term. Zac. Ppia. Jal.	82.94																			
Ojuelos de Jalisco	83.20	1	0	6219	1.5	70.5	2.0	6.5	3.8	7.8	4.1	3.0	0.8	72.0	2.0	26.0	0.067	0.502	21.875967	-101.569398
Ojuelos de Jalisco	83.20	3	0	4997	3.0	56.0	3.8	7.8	3.6	13.4	4.9	6.4	1.1	59.0	3.8	37.2	0.059	0.506	21.852205	-101.594163
X. C. Lagos de Moreno - San Luis Potosí (Cuota)	140.00	1	0	3594	2.3	60.2	2.7	13.2	4.4	9.3	4.3	3.1	0.5	62.5	2.7	34.8	0.067	0.505	21.449500	-101.804583
X. C. León - Aguascalientes	146.90	1	1	4454	2.9	61.3	2.5	8.5	4.1	11.2	3.3	5.3	0.9	64.2	2.5	33.3	0.068	0.502	21.375653	-101.894403
X. C. León - Aguascalientes	146.90	1	2	4496	4.3	54.1	2.5	10.1	4.7	13.5	3.7	6.0	1.1	58.4	2.5	39.1	0.067	0.502	21.375583	-101.894361
Lagos de Moreno	150.00																			

SAN LUIS POTOSI

23 CARR: San Luis Potosí - Matehuala

CLAVE: 24508

RUTA: MEX-057

AÑO: 2016

LUGAR	ESTACION				CLASIFICACION VEHICULAR EN PORCIENTO										COORDENADAS					
	KM	TE	SC	TDPA	M	A	B	C2	C3	T3S2	T3S3	T3S2R4	OTROS	A	B	C	K'	D	LATITUD	LONGITUD
San Luis Potosí	0.00																			
X. Periférico de San Luis Potosí	7.36	3	1	12300	0.8	74.2	4.5	7.4	2.5	6.0	2.3	1.5	0.8	75.0	4.5	20.5	0.079	0.502	22.207323	-100.919921
X. Periférico de San Luis Potosí	7.36	3	2	12187	0.7	72.1	4.7	7.8	2.8	6.9	2.5	1.6	0.9	72.8	4.7	22.5	0.069	0.502	22.207225	-100.919916
Ventura (X. Nuevo Libramiento de SLP)	33.20	3	1	14050	0.7	50.2	4.9	8.2	2.7	22.1	5.1	5.5	0.6	50.9	4.9	44.2	0.056	0.502	22.335750	-100.798167
Ventura (X. Nuevo Libramiento de SLP)	33.20	3	2	14155	1.3	44.5	5.8	9.5	2.9	23.6	5.5	6.2	0.7	45.8	5.8	48.4	0.071	0.502	22.336103	-100.798714
T. Der. Villa Hidalgo	45.94	1	1	12608	0.9	78.0	2.8	3.8	1.4	9.3	1.6	1.6	0.6	78.9	2.8	18.3	0.080	0.533	22.417715	-100.719159
T. Der. Villa Hidalgo	45.94	1	2	14377	0.7	76.9	2.9	4.1	1.4	9.7	1.7	1.8	0.8	77.6	2.9	19.5	0.082	0.533	22.417821	-100.719315
T. Izq. Villa Arista	61.35	1	1	10762	1.2	37.2	4.9	8.7	3.8	30.3	5.8	7.1	1.0	38.4	4.9	56.7	0.059	0.532	22.558106	-100.647651
T. Izq. Villa Arista	61.35	1	2	12236	0.8	35.7	5.4	9.2	3.8	30.1	6.2	7.8	1.0	36.5	5.4	58.1	0.055	0.532	22.558061	-100.647538
T. Der. Guadalcázar	75.70	1	1	9873	1.4	43.9	3.6	6.9	3.0	28.8	4.4	6.6	1.4	45.3	3.6	51.1	0.097	0.510	22.634266	-100.523013
T. Der. Guadalcázar	75.70	1	2	10295	0.7	39.4	4.3	8.1	3.4	30.2	5.0	7.3	1.6	40.1	4.3	55.6	0.058	0.510	22.634221	-100.522831
T. Der. Guadalcázar	75.70	3	1	10135	1.0	42.8	4.7	8.2	3.0	28.2	4.4	6.1	1.6	43.8	4.7	51.5	0.064	0.520	22.643917	-100.516278
T. Der. Guadalcázar	75.70	3	2	9349	1.1	38.5	5.3	8.7	3.1	29.7	4.8	7.0	1.8	39.6	5.3	55.1	0.064	0.520	22.643889	-100.516250
T. Der. Cd. del Maíz	109.62	3	1	8532	1.2	39.3	4.3	8.4	2.5	33.9	4.4	4.6	1.4	40.5	4.3	55.2	0.098	0.503	22.936778	-100.460583
T. Der. Cd. del Maíz	109.62	3	2	8652	1.0	33.7	4.9	8.6	2.7	37.6	5.1	4.8	1.6	34.7	4.9	60.4	0.055	0.503	22.936786	-100.460538
La Bonita	171.40	1	1	8280	1.0	45.3	4.1	6.8	2.4	30.4	3.8	4.6	1.6	46.3	4.1	49.6	0.079	0.506	23.476952	-100.612765
La Bonita	171.40	1	2	8096	0.7	39.3	4.5	8.1	2.6	34.3	4.1	4.7	1.7	40.0	4.5	55.5	0.063	0.506	23.476811	-100.612906
Matehuala	187.39	1	1	9503	1.4	42.0	4.1	10.1	2.7	30.5	3.8	4.2	1.2	43.4	4.1	52.5	0.091	0.512	23.581028	-100.632604
Matehuala	187.39	1	2	9074	0.8	37.5	4.7	10.9	3.0	32.6	4.2	5.0	1.3	38.3	4.7	57.0	0.055	0.512	23.581276	-100.632321

24 CARR: T. C. (Ent. El Huizache- Ant. Morelos)-El Salto

CLAVE: 24204

RUTA: MEX-080

AÑO: 2016

LUGAR	ESTACION				CLASIFICACION VEHICULAR EN PORCIENTO										COORDENADAS					
	KM	TE	SC	TDPA	M	A	B	C2	C3	T3S2	T3S3	T3S2R4	OTROS	A	B	C	K'	D	LATITUD	LONGITUD
T. C. El Huizache - Ant. Morelos	0.00	3	0	2598	3.9	84.1	0.1	8.1	1.2	1.6	0.3	0.5	0.2	88.0	0.1	11.9	0.080	0.517	22.535337	-99.307564
Salto del Agua	12.00																			

25 CARR: T. C. (Qro - S.L.P.) - Tierra Nueva

CLAVE: 24203

RUTA: MEX-057

AÑO: 2016

LUGAR	ESTACION				CLASIFICACION VEHICULAR EN PORCIENTO										COORDENADAS					
	KM	TE	SC	TDPA	M	A	B	C2	C3	T3S2	T3S3	T3S2R4	OTROS	A	B	C	K'	D	LATITUD	LONGITUD
T. C. Querétaro - San Luis Potosí	0.00	3	0	1560	1.1	82.3	0.5	9.8	3.0	1.7	1.2	0.0	0.4	83.4	0.5	16.1	0.104	0.511	21.694507	-100.680988
Tierra Nueva	13.10																			

SAN LUIS POTOSI

26 CARR: T. C. (S.L.P. - Matehuala) - Villa Hidalgo

CLAVE: 24619

RUTA: MEX-057

AÑO: 2016

LUGAR	ESTACION				CLASIFICACION VEHICULAR EN PORCIENTO													COORDENADAS		
	KM	TE	SC	TDPA	M	A	B	C2	C3	T3S2	T3S3	T3S2R4	OTROS	A	B	C	K'	D	LATITUD	LONGITUD
Paso por Villa Hidalgo	0.00	3	0	1897	1.4	76.5	2.0	12.4	2.0	3.0	1.5	0.8	0.4	77.9	2.0	20.1	0.079	0.508	22.432784	-100.700769
Paso por Villa Hidalgo	10.20	1	0	2078	2.4	72.3	1.6	15.1	1.7	3.6	1.7	1.1	0.5	74.7	1.6	23.7	0.090	0.509	22.496997	-100.665739

27 CARR: Tamazunchale - San Felipe Orizatlán

CLAVE: 00609

RUTA: MEX-085

AÑO: 2016

LUGAR	ESTACION				CLASIFICACION VEHICULAR EN PORCIENTO													COORDENADAS		
	KM	TE	SC	TDPA	M	A	B	C2	C3	T3S2	T3S3	T3S2R4	OTROS	A	B	C	K'	D	LATITUD	LONGITUD
T. C. Portezuelo - Cd. Valles	0.00	3	0	10194	15.1	67.5	0.6	6.8	0.6	6.3	1.5	0.6	1.0	82.6	0.6	16.8	0.072	0.506	21.250147	-98.767179
Lim. Edos. Term. S. L. P. Ppia. Hgo.	18.50																			
San Felipe Orizatlán	27.10	1	0	2001	8.1	76.2	2.8	6.6	2.8	2.2	1.0	0.1	0.2	84.3	2.8	12.9	0.086	0.511	21.169752	-98.617142

28 CARR: Lagos de Moreno - Villa de Arriaga (Cuota)

CLAVE:

RUTA: MEX-080D

AÑO: 2016

LUGAR	ESTACION				CLASIFICACION VEHICULAR EN PORCIENTO													COORDENADAS		
	KM	TE	SC	TDPA	M	A	B	C2	C3	T3S2	T3S3	T3S2R4	OTROS	A	B	C	K'	D	LATITUD	LONGITUD
X. C. San Luis Potosí - Lagos de Moreno	12.10	3	0	3229	1.4	44.8	3.9	6.2	3.2	22.5	3.7	12.9	1.4	46.2	3.9	49.9	0.068	0.511	21.447861	-101.813556
Lim. Edos. Term. Jal. Tab. Ppia. Gto.	46.30																			
Lim. Edos. Term. Gto. Tab. Ppia. SLP.	68.63																			
X. C. San Luis Potosí - Villa de Arriaga (Cuota)	78.00	1	0	3371	0.4	45.8	4.0	6.4	2.6	22.4	4.0	13.0	1.4	46.2	4.0	49.8	0.078	0.506	21.888078	-101.408174

29 CARR: Libramiento de Matehuala (Cuota)

CLAVE: 24205

RUTA: MEX-057D

AÑO: 2016

LUGAR	ESTACION				CLASIFICACION VEHICULAR EN PORCIENTO													COORDENADAS		
	KM	TE	SC	TDPA	M	A	B	C2	C3	T3S2	T3S3	T3S2R4	OTROS	A	B	C	K'	D	LATITUD	LONGITUD
T. C. San Luis Potosí - Matehuala	0.00	3	1	5798	1.9	38.7	4.6	7.8	2.6	35.3	3.6	4.7	0.8	40.6	4.6	54.8	0.082	0.500	23.602567	-100.622667
T. C. San Luis Potosí - Matehuala	0.00	3	2	5810	1.9	34.9	5.4	8.3	2.9	36.3	3.8	5.5	1.0	36.8	5.4	57.8	0.065	0.500	23.602596	-100.622696
Caseta de Cobro Matehuala	7.00	2	1	5656	0.2	30.3	2.7	6.0	3.8	44.9	3.8	7.3	1.0	30.5	2.7	66.8	0.073	0.500	23.664154	-100.607285
Caseta de Cobro Matehuala	7.00	2	2	5656	0.2	30.3	2.7	6.0	3.8	44.9	3.8	7.3	1.0	30.5	2.7	66.8	0.073	0.500	23.664154	-100.607285
T. C. Matehuala - Ent. Puerto México	14.20	1	1	5985	0.7	40.3	4.4	6.5	2.2	36.3	3.5	5.3	0.8	41.0	4.4	54.6	0.072	0.512	23.695563	-100.611761
T. C. Matehuala - Ent. Puerto México	14.20	1	2	5704	0.9	31.4	4.7	7.7	2.6	42.1	3.8	5.9	0.9	32.3	4.7	63.0	0.061	0.512	23.696637	-100.612224

SAN LUIS POTOSI

30 CARR: Libramiento Norponiente de San Luis Potosí (Cuota)

CLAVE:

RUTA: MEX-057D

AÑO: 2016

LUGAR	ESTACION				CLASIFICACION VEHICULAR EN PORCIENTO													COORDENADAS		
	KM	TE	SC	TDPA	M	A	B	C2	C3	T3S2	T3S3	T3S2R4	OTROS	A	B	C	K'	D	LATITUD	LONGITUD
T. Libramiento Oriente de San Luis Potosí (Cuota)	0.00																			
X. C. San Luis Potosí - Matehuala	5.60	1	0	2990	0.7	47.4	7.2	16.5	4.6	12.2	3.0	7.5	0.9	48.1	7.2	44.7	0.065	0.514	22.256781	-100.858762
X. C. San Luis Potosí - Matehuala	5.60	3	0	2748	3.7	35.5	6.7	7.5	5.6	25.9	5.6	8.5	1.0	39.2	6.7	54.1	0.060	0.506	22.268648	-100.873482
Caseta de Cobro Peñasco	17.40	2	0	2120	0.2	25.0	2.8	6.1	8.2	32.3	6.1	17.1	2.2	25.2	2.8	72.0	0.067	0.500	22.299833	-100.971420
T. C. San Luis Potosí - Ent. Arcinas	31.50																			

31 CARR: Libramiento Oriente de San Luis Potosí (Cuota)

CLAVE: 24009

RUTA: MEX-057D

AÑO: 2016

LUGAR	ESTACION				CLASIFICACION VEHICULAR EN PORCIENTO													COORDENADAS		
	KM	TE	SC	TDPA	M	A	B	C2	C3	T3S2	T3S3	T3S2R4	OTROS	A	B	C	K'	D	LATITUD	LONGITUD
T. C. Querétaro - San Luis Potosí	0.00																			
X. C. Cd. Valles - San Luis Potosí	11.20	1	1	8165	1.3	37.5	4.9	6.6	4.4	31.5	5.2	7.9	0.7	38.8	4.9	56.3	0.055	0.515	22.123474	-100.825329
X. C. Cd. Valles - San Luis Potosí	11.20	1	2	7685	1.4	31.2	5.2	7.1	4.6	35.4	5.9	8.5	0.7	32.6	5.2	62.2	0.061	0.515	22.123464	-100.825311
Caseta de Cobro San Nicolás de Los Jassos	11.22	2	1	8521	0.1	25.6	2.5	5.9	4.8	43.9	5.2	10.5	1.5	25.7	2.5	71.8	0.067	0.500	22.129766	-100.825104
Caseta de Cobro San Nicolás de Los Jassos	11.22	2	2	8521	0.1	25.6	2.5	5.9	4.8	43.9	5.2	10.5	1.5	25.7	2.5	71.8	0.067	0.500	22.129766	-100.825104
T. C. San Luis Potosí - Matehuala	33.76	1	1	7934	0.7	33.6	4.6	5.3	2.3	39.2	5.4	8.0	0.9	34.3	4.6	61.1	0.079	0.501	22.319709	-100.802940
T. C. San Luis Potosí - Matehuala	33.76	1	2	7965	0.7	26.3	5.4	5.8	2.4	44.1	5.5	8.9	0.9	27.0	5.4	67.6	0.065	0.501	22.319690	-100.802928

32 CARR: Rayón - Ent. Tamuín (Cuota)

CLAVE:

RUTA: MEX-070D

AÑO: 2016

LUGAR	ESTACION				CLASIFICACION VEHICULAR EN PORCIENTO													COORDENADAS		
	KM	TE	SC	TDPA	M	A	B	C2	C3	T3S2	T3S3	T3S2R4	OTROS	A	B	C	K'	D	LATITUD	LONGITUD
Rayón	0.00																			
Vicente Guerrero	19.70	1	0	2372	0.9	70.9	5.5	9.7	2.7	5.8	2.0	1.9	0.6	71.8	5.5	22.7	0.091	0.526	21.865813	-99.498718
Vicente Guerrero	19.70	3	0	2352	1.2	72.6	4.7	8.2	4.0	5.3	2.0	1.4	0.6	73.8	4.7	21.5	0.077	0.519	21.864015	-99.478035
La Pitahaya	68.58	1	0	1661	3.4	74.8	1.2	9.9	3.5	4.8	1.6	0.5	0.3	78.2	1.2	20.6	0.085	0.514	22.002943	-99.133924
T. C. Cd. Valles - Tampico	120.00																			

33 CARR: Charcas - Villa Santo Domingo

CLAVE: 24624

RUTA: SLP-017

AÑO: 2016

LUGAR	ESTACION				CLASIFICACION VEHICULAR EN PORCIENTO													COORDENADAS		
	KM	TE	SC	TDPA	M	A	B	C2	C3	T3S2	T3S3	T3S2R4	OTROS	A	B	C	K'	D	LATITUD	LONGITUD
Charcas	0.00	3	0	1820	20.4	62.0	4.0	9.8	2.1	1.1	0.5	0.1	0.0	82.4	4.0	13.6	0.095	0.505	23.138778	-101.132694
Villa Santo Domingo	75.00																			

SAN LUIS POTOSI

34 CARR: Ébano - Estación Manuel

CLAVE: 24624

RUTA: SLP-TAM

AÑO: 2016

LUGAR	ESTACION	CLASIFICACION VEHICULAR EN PORCIENTO														COORDENADAS				
		KM	TE	SC	TDPA	M	A	B	C2	C3	T3S2	T3S3	T3S2R4	OTROS	A	B	C	K'	D	LATITUD
Ébano	0.00	3	0	2038	19.2	59.1	1.9	9.6	2.6	4.1	1.8	1.5	0.2	78.3	1.9	19.8	0.094	0.502	22.232783	-98.366524
Lim. de Edos. Term. S. L. P.. Ppia. Ver.	2.71																			
Lim. de Edos. Term. Ver. Ppia. S. L. P.	3.95																			
Lim. de Edos. Term. S. L. P. Ppia. Ver.	5.00																			
Lim. de Edos. Term. Ver. Ppia. Tamps.	25.00																			
Estación Manuel	65.60																			

35 CARR: Matehuala - La Paz

CLAVE: 24621

RUTA: SLP-020

AÑO: 2016

LUGAR	ESTACION	CLASIFICACION VEHICULAR EN PORCIENTO														COORDENADAS				
		KM	TE	SC	TDPA	M	A	B	C2	C3	T3S2	T3S3	T3S2R4	OTROS	A	B	C	K'	D	LATITUD
Matehuala	0.00	3	1	2352	16.5	69.5	0.6	10.7	0.9	0.8	0.6	0.2	0.2	86.0	0.6	13.4	0.087	0.504	23.670343	-100.654170
Matehuala	0.00	3	2	2388	17.2	69.7	0.4	10.0	0.8	0.9	0.5	0.3	0.2	86.9	0.4	12.7	0.093	0.504	23.670408	-100.654241
La Paz	8.00	1	1	2398	24.4	65.9	1.6	6.2	0.6	0.8	0.2	0.2	0.1	90.3	1.6	8.1	0.114	0.521	23.680171	-100.701146
La Paz	8.00	1	2	2202	24.7	64.9	2.0	6.6	0.6	0.7	0.2	0.2	0.1	89.6	2.0	8.4	0.082	0.521	23.680084	-100.701247

36 CARR: Matehuala - La Poza

CLAVE: 00086

RUTA: SLP-029-NL-061

AÑO: 2016

LUGAR	ESTACION	CLASIFICACION VEHICULAR EN PORCIENTO														COORDENADAS				
		KM	TE	SC	TDPA	M	A	B	C2	C3	T3S2	T3S3	T3S2R4	OTROS	A	B	C	K'	D	LATITUD
Matehuala	0.00	3	0	3765	7.6	68.9	1.4	14.6	3.7	2.2	0.6	0.6	0.4	76.5	1.4	22.1	0.078	0.501	23.665648	-100.602614
Lim. Edos. Term. S. L. P. Ppia. N. L.	19.70																			
Lim. Edos. Term. N. L. Ppia. S. L. P.	19.90																			
Lim. Edos. Term. S. L. P. Ppia. N. L.	21.53																			
Doctor Arroyo	49.00	1	0	3634	3.9	76.1	1.1	13.5	2.7	1.9	0.3	0.4	0.1	80.0	1.1	18.9	0.085	0.501	23.686806	-100.211917
La Ascención	131.00	1	0	750	3.0	74.8	3.7	15.9	1.0	1.4	0.1	0.0	0.1	77.8	3.7	18.5	0.095	0.518	24.320806	-99.905556

37 CARR: Periférico de San Luis Potosí

CLAVE: 24618

RUTA: SLP-032

AÑO: 2016

LUGAR	ESTACION	CLASIFICACION VEHICULAR EN PORCIENTO														COORDENADAS				
		KM	TE	SC	TDPA	M	A	B	C2	C3	T3S2	T3S3	T3S2R4	OTROS	A	B	C	K'	D	LATITUD
T. C. San Luis Potosí - Ent. Arcinas	0.00																			
X. C. Querétaro - San Luis Potosí (Lateral)	22.00	3	1	7160	6.5	79.0	0.2	12.4	0.7	0.5	0.5	0.1	0.1	85.5	0.2	14.3	0.078	0.537	22.135262	-100.917010
X. C. Querétaro - San Luis Potosí (Central)	22.00	3	1	18351	3.5	77.3	1.1	8.6	2.7	3.5	2.0	0.9	0.4	80.8	1.1	18.1	0.069	0.514	22.135250	-100.917194

SAN LUIS POTOSI

37 CARR: Periférico de San Luis Potosí

CLAVE: 24618

RUTA: SLP-032

AÑO: 2016

LUGAR	ESTACION				CLASIFICACION VEHICULAR EN PORCIENTO										COORDENADAS					
	KM	TE	SC	TDPA	M	A	B	C2	C3	T3S2	T3S3	T3S2R4	OTROS	A	B	C	K'	D	LATITUD	LONGITUD
X. C. Querétaro - San Luis Potosí (Central)	22.00	3	2	17730	3.6	78.3	0.8	7.1	2.9	3.1	2.7	0.9	0.6	81.9	0.8	17.3	0.061	0.514	22.135209	-100.917111
X. C. Querétaro - San Luis Potosí (Lateral)	22.00	3	2	8290	7.4	78.6	0.2	9.8	0.8	1.3	1.2	0.2	0.5	86.0	0.2	13.8	0.069	0.537	22.135207	-100.916913
X. C. San Luis Potosí - Cd. Valles	25.00	3	1	11717	4.7	74.0	1.7	9.2	3.4	3.6	2.1	0.7	0.6	78.7	1.7	19.6	0.073	0.524	22.165632	-100.915163
X. C. San Luis Potosí - Cd. Valles	25.00	3	2	10664	6.2	70.2	1.9	10.0	3.9	4.0	2.2	0.8	0.8	76.4	1.9	21.7	0.079	0.524	22.165616	-100.915112
X. C. San Luis Potosí - Matehuala	30.70	1	1	11340	4.3	72.7	0.9	11.6	3.8	3.9	1.1	1.2	0.5	77.0	0.9	22.1	0.094	0.533	22.201331	-100.921930
X. C. San Luis Potosí - Matehuala	30.70	1	2	12967	4.5	72.4	1.0	12.2	3.8	3.0	1.9	1.0	0.2	76.9	1.0	22.1	0.087	0.533	22.201333	-100.921863
T. C. San Luis Potosí - Ent. Arcinas	44.80																			

38 CARR: Ramal a Cerritos

CLAVE: 24615

RUTA: SLP-007

AÑO: 2016

LUGAR	ESTACION				CLASIFICACION VEHICULAR EN PORCIENTO										COORDENADAS					
	KM	TE	SC	TDPA	M	A	B	C2	C3	T3S2	T3S3	T3S2R4	OTROS	A	B	C	K'	D	LATITUD	LONGITUD
T. C. San Luis Potosí - Matehuala	0.00	3	0	507	1.7	62.1	0.9	16.4	2.1	7.2	8.5	0.1	1.0	63.8	0.9	35.3	0.079	0.515	22.610978	-100.546014
Cerritos	37.00																			

39 CARR: Ramal a Pozo de Acuña

CLAVE: 24626

RUTA: SLP-009

AÑO: 2016

LUGAR	ESTACION				CLASIFICACION VEHICULAR EN PORCIENTO										COORDENADAS					
	KM	TE	SC	TDPA	M	A	B	C2	C3	T3S2	T3S3	T3S2R4	OTROS	A	B	C	K'	D	LATITUD	LONGITUD
T. C. San Luis Potosí - Matehuala	0.00	3	0	458	1.8	83.3	0.9	13.0	0.4	0.4	0.2	0.0	0.0	85.1	0.9	14.0	0.105	0.513	22.640453	-100.512556
Pozo de Acuña	37.90																			

40 CARR: Rayón - Arroyo Seco

CLAVE: 24008

RUTA: SLP-011

AÑO: 2016

LUGAR	ESTACION				CLASIFICACION VEHICULAR EN PORCIENTO										COORDENADAS					
	KM	TE	SC	TDPA	M	A	B	C2	C3	T3S2	T3S3	T3S2R4	OTROS	A	B	C	K'	D	LATITUD	LONGITUD
Rayón	0.00	3	0	1058	5.3	74.2	0.4	14.9	2.5	1.8	0.6	0.2	0.1	79.5	0.4	20.1	0.098	0.520	21.848236	-99.626938
Lagunillas	36.00	1	0	311	4.9	76.6	0.1	16.8	1.4	0.2	0.0	0.0	0.0	81.5	0.1	18.4	0.100	0.501	21.594598	-99.565006
Lim. De Edos. Term. S.L.P. Ppia Qro.	51.00																			
Arroyo Seco	57.00	1	0	513	5.0	78.3	4.2	10.3	1.2	0.8	0.1	0.0	0.1	83.3	4.2	12.5	0.093	0.504	21.552638	-99.682631

SAN LUIS POTOSI

41 CARR: Santo Domingo - Cerro Gordo

CLAVE: 24614

RUTA: SLP-022

AÑO: 2016

LUGAR	ESTACION				CLASIFICACION VEHICULAR EN PORCIENTO										COORDENADAS					
	KM	TE	SC	TDPA	M	A	B	C2	C3	T3S2	T3S3	T3S2R4	OTROS	A	B	C	K'	D	LATITUD	LONGITUD
T. C. Cd. Valles - San Luis Potosi	0.00	3	0	3741	1.7	73.6	0.8	13.3	1.5	5.7	2.1	0.4	0.9	75.3	0.8	23.9	0.090	0.514	22.094114	-100.744753
T. C. Querétaro - San Luis Potosi	19.00	1	0	3121	1.2	72.5	0.8	15.1	2.2	3.6	4.0	0.4	0.2	73.7	0.8	25.5	0.088	0.501	21.976372	-100.818417

42 CARR: Tamuín - Estación F.F.C.C. Tamuín

CLAVE: 24022

RUTA: SLP-040

AÑO: 2016

LUGAR	ESTACION				CLASIFICACION VEHICULAR EN PORCIENTO										COORDENADAS					
	KM	TE	SC	TDPA	M	A	B	C2	C3	T3S2	T3S3	T3S2R4	OTROS	A	B	C	K'	D	LATITUD	LONGITUD
Tamuín	0.00	3	0	6745	13.6	72.4	0.4	5.9	1.1	4.8	0.7	0.2	0.9	86.0	0.4	13.6	0.077	0.509	22.013695	-98.784124
Estación F.F.C.C. Tamuín	10.00	1	0	1582	30.6	58.1	0.8	6.2	1.7	1.8	0.5	0.0	0.3	88.7	0.8	10.5	0.088	0.507	22.073213	-98.809796

43 CARR: Tamuín - Xolol

CLAVE: 24027

RUTA: SLP-014

AÑO: 2016

LUGAR	ESTACION				CLASIFICACION VEHICULAR EN PORCIENTO										COORDENADAS					
	KM	TE	SC	TDPA	M	A	B	C2	C3	T3S2	T3S3	T3S2R4	OTROS	A	B	C	K'	D	LATITUD	LONGITUD
Tamuín	0.00	3	0	3727	11.9	65.6	1.5	11.1	2.9	3.8	1.8	1.0	0.4	77.5	1.5	21.0	0.077	0.511	21.998499	-98.763100
San Vicente Tancuayalab	37.62																			
Xolol	97.00																			

44 CARR: Cerritos - Rioverde (Cuota)

CLAVE: 00138

RUTA: SLP-D

AÑO: 2016

LUGAR	ESTACION				CLASIFICACION VEHICULAR EN PORCIENTO										COORDENADAS					
	KM	TE	SC	TDPA	M	A	B	C2	C3	T3S2	T3S3	T3S2R4	OTROS	A	B	C	K'	D	LATITUD	LONGITUD
Cerritos	0.00	3	0	5083	0.4	63.3	8.2	9.6	2.1	6.0	4.5	5.0	0.9	63.7	8.2	28.1	0.085	0.507	22.587028	-100.583303
Villa Juárez	58.00	3	0	2430	0.2	64.1	9.0	10.5	2.5	7.8	2.6	2.7	0.6	64.3	9.0	26.7	0.106	0.513	22.320168	-100.286279
Río Verde	103.00	1	0	3916	2.6	66.5	5.6	12.2	3.1	6.0	1.9	1.6	0.5	69.1	5.6	25.3	0.082	0.506	21.924639	-99.959113

45 CARR: San Luis Potosi - Villa de Arriaga (Cuota)

CLAVE: 24209

RUTA: SLP-D

AÑO: 2016

LUGAR	ESTACION				CLASIFICACION VEHICULAR EN PORCIENTO										COORDENADAS					
	KM	TE	SC	TDPA	M	A	B	C2	C3	T3S2	T3S3	T3S2R4	OTROS	A	B	C	K'	D	LATITUD	LONGITUD
T. C. Querétaro - San Luis Potosi	0.00	3	0	8725	1.9	55.7	4.4	10.6	4.3	14.1	2.5	6.0	0.5	57.6	4.4	38.0	0.076	0.501	22.010088	-100.846037
Villa de Arriaga	77.00	1	0	3197	1.4	31.3	6.6	5.9	4.1	26.8	5.4	16.7	1.8	32.7	6.6	60.7	0.063	0.508	21.892667	-101.388028

SAN LUIS POTOSI

46 CARR: Rayón - Cd. del Maíz

CLAVE: 24206

RUTA: MEX-070-SLP-005

AÑO: 2016

LUGAR	ESTACION				CLASIFICACION VEHICULAR EN PORCIENTO													COORDENADAS		
	KM	TE	SC	TDPA	M	A	B	C2	C3	T3S2	T3S3	T3S2R4	OTROS	A	B	C	K'	D	LATITUD	LONGITUD
T. C. (Cd. Valles - San Luis Potosí)	0.00																			
Cárdenas	15.80	1	0	3195	2.6	85.6	0.7	8.1	0.9	1.6	0.3	0.1	0.1	88.2	0.7	11.1	0.085	0.500	21.983457	-99.647667
Cd. del Maíz	55.70	1	0	720	4.0	77.1	1.1	15.7	0.8	1.1	0.1	0.0	0.1	81.1	1.1	17.8	0.094	0.506	22.393856	-99.611773

47 CARR: San Lorenzo - Moctezuma

CLAVE: 24016

RUTA: MEX-063-SLP-012

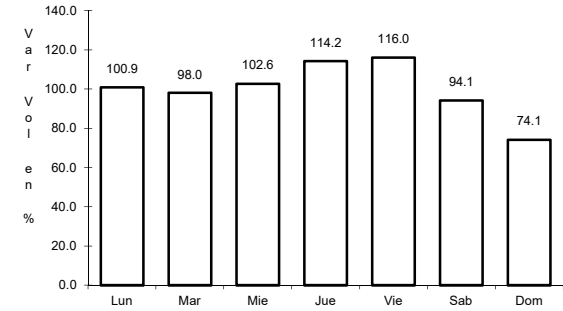
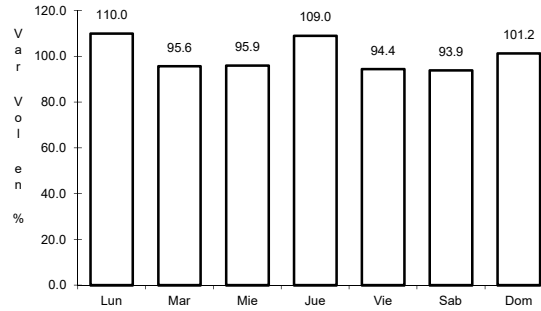
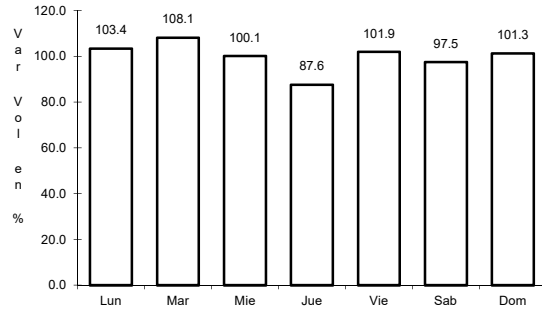
AÑO: 2016

LUGAR	ESTACION				CLASIFICACION VEHICULAR EN PORCIENTO													COORDENADAS		
	KM	TE	SC	TDPA	M	A	B	C2	C3	T3S2	T3S3	T3S2R4	OTROS	A	B	C	K'	D	LATITUD	LONGITUD
T. C. San Luis Potosí - Matehuala	0.00	3	0	1320	1.2	67.9	2.3	17.6	2.8	5.2	1.7	0.8	0.5	69.1	2.3	28.6	0.087	0.522	22.571407	-100.642373
Moctezuma	54.00	1	0	1678	7.3	70.2	0.4	18.3	1.3	1.3	0.6	0.4	0.2	77.5	0.4	22.1	0.090	0.503	22.759067	-101.063386

1 CARR: Antiguo Morelos - Ent. El Huizache

CLAVE: 00136

RUTA: MEX-080



Km: 0.00 Tipo: 3 Sent: 0

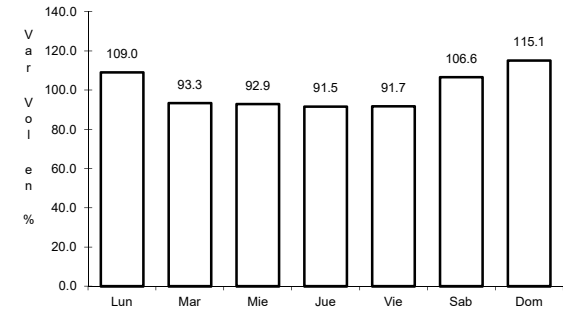
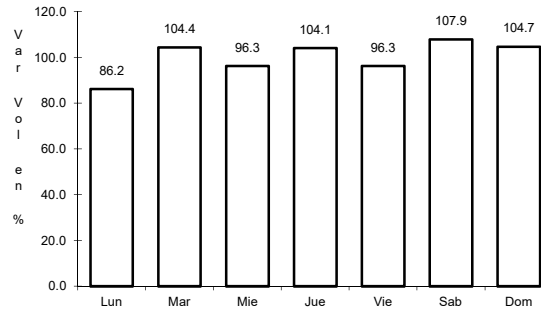
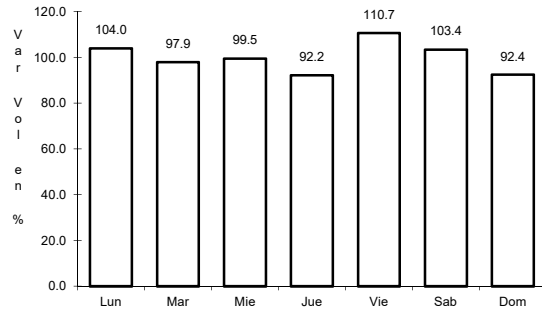
Km: 86.00 Tipo: 3 Sent: 0

Km: 198.83 Tipo: 1 Sent: 0

2 CARR: Carbonera - T. C. (Ent. Morelos - Saltillo)

CLAVE: 00218

RUTA: MEX-062



Km: 0.00 Tipo: 3 Sent: 0

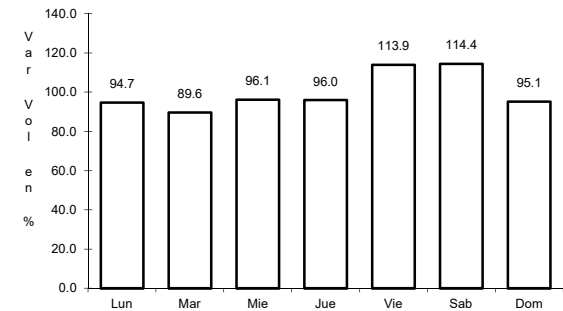
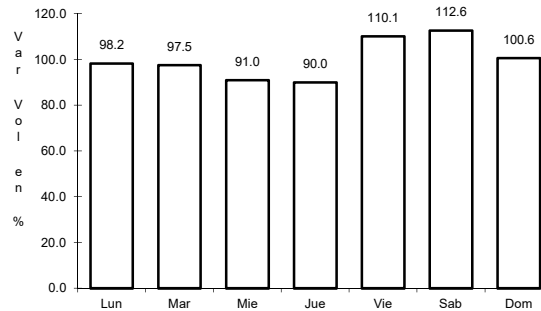
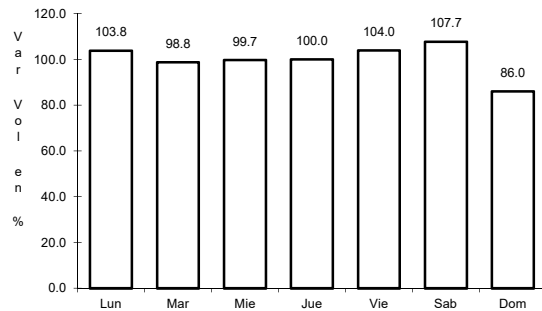
Km: 18.00 Tipo: 1 Sent: 0

Km: 112.00 Tipo: 1 Sent: 0

3 CARR: Cd. Valles - Cd. Victoria

CLAVE: 00509

RUTA: MEX-085



Km: 0.00 Tipo: 3 Sent: 0

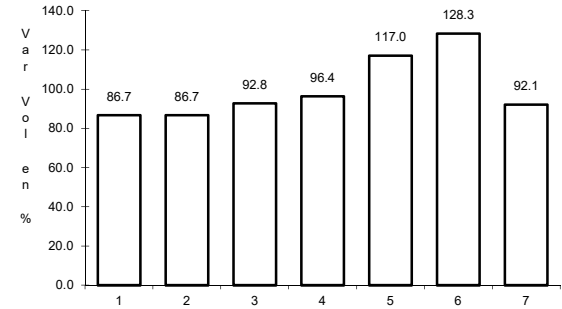
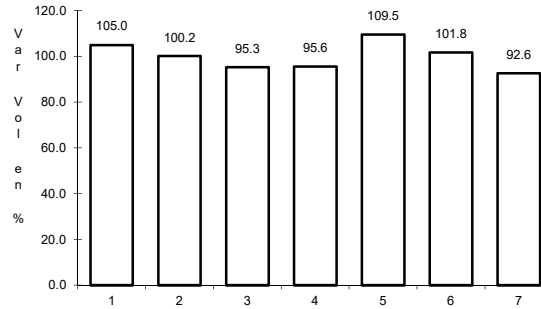
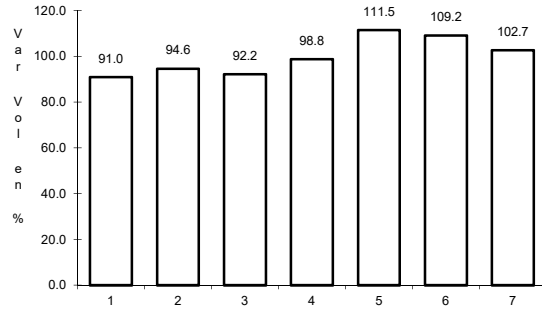
Km: 110.00 Tipo: 3 Sent: 0

Km: 232.00 Tipo: 1 Sent: 0

4 CARR: Cd. Valles - San Luis Potosí

CLAVE: 24135

RUTA: MEX-070



Km: 0.00 Tipo: 3 Sent: 1

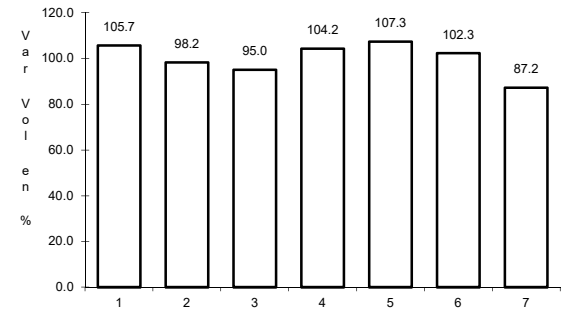
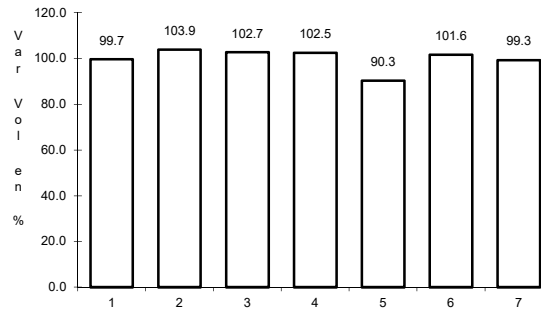
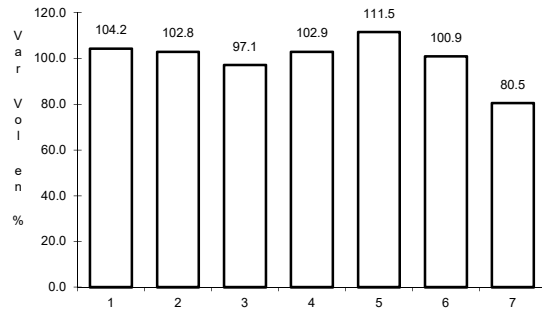
Km: 0.00 Tipo: 3 Sent: 2

Km: 161.04 Tipo: 3 Sent: 0

5 CARR: Cd. Valles - Tampico

CLAVE: 00138

RUTA: MEX-070



Km: 0.00 Tipo: 3 Sent: 0

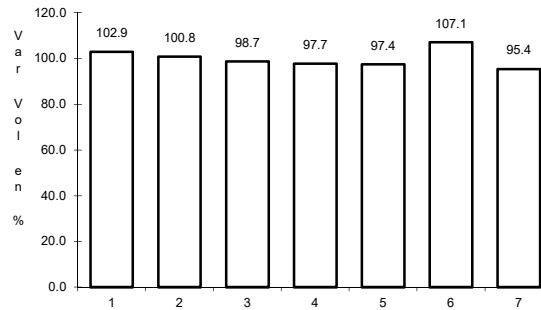
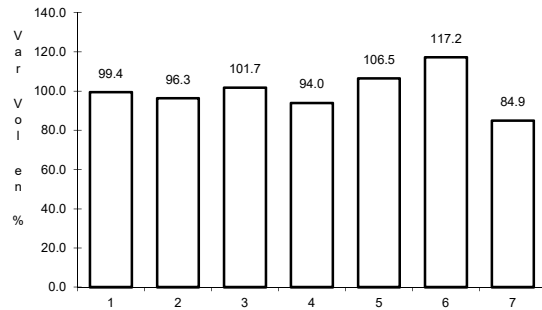
Km: 138.00 Tipo: 1 Sent: 1

Km: 138.00 Tipo: 1 Sent: 2

6 CARR: El Clarín - Agua Buena

CLAVE: 24283

RUTA: MEX-070



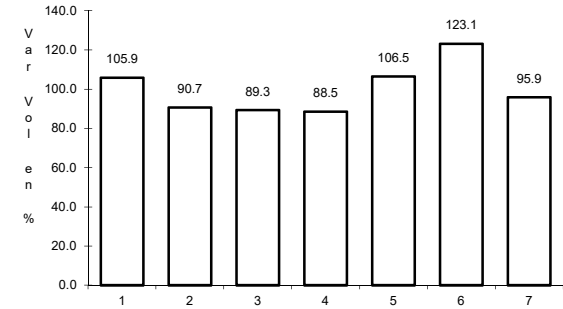
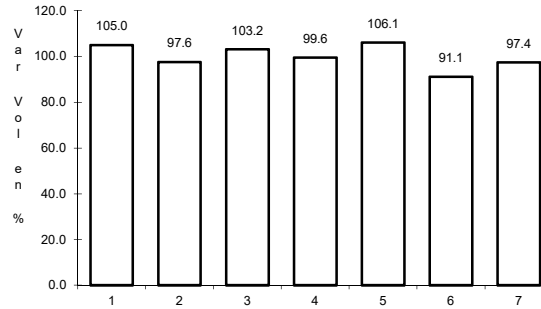
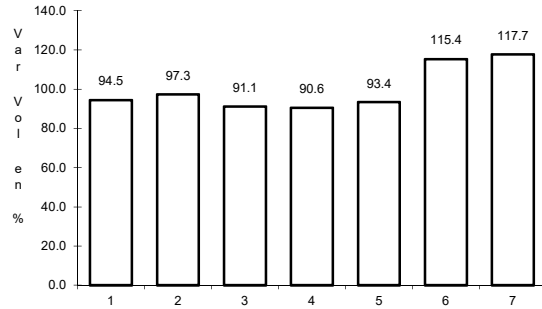
Km: 0.00 Tipo: 3 Sent: 0

Km: 11.23 Tipo: 1 Sent: 0

7 CARR: Ent. Ahualulco - Ent. La Bonita

CLAVE: 24258

RUTA: MEX-063



Km: 0.00 Tipo: 3 Sent: 0

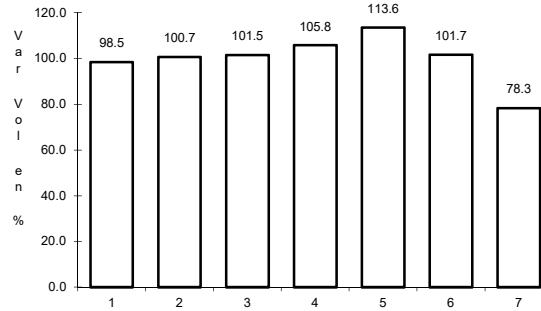
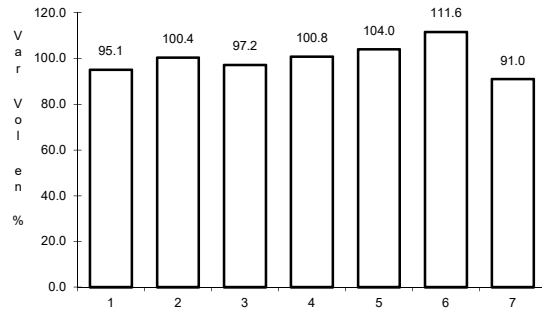
Km: 59.00 Tipo: 1 Sent: 0

Km: 169.90 Tipo: 1 Sent: 0

8 CARR: Ent. de Zaragoza - San Felipe

CLAVE: 00240

RUTA: MEX-037



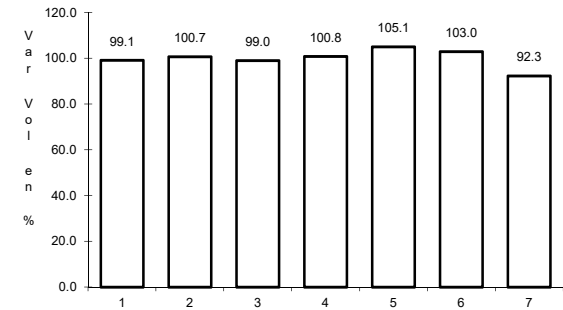
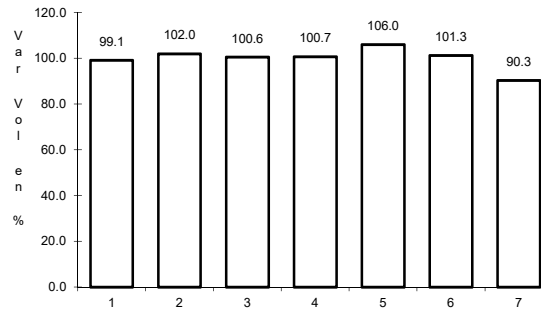
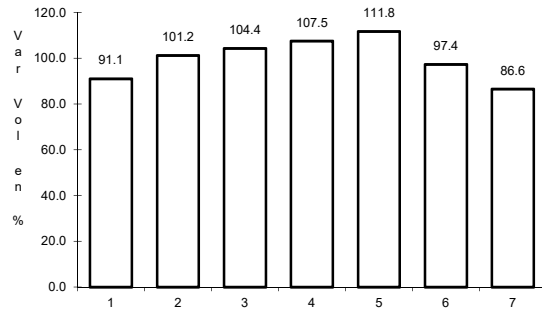
Km: 0.00 Tipo: 3 Sent: 0

Km: 72.00 Tipo: 1 Sent: 0

9 CARR: Ent. Tula - Cd. Victoria

CLAVE: 00179

RUTA: MEX-101



Km: 0.00 Tipo: 3 Sent: 0

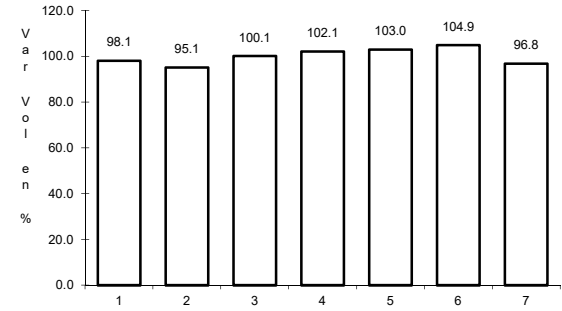
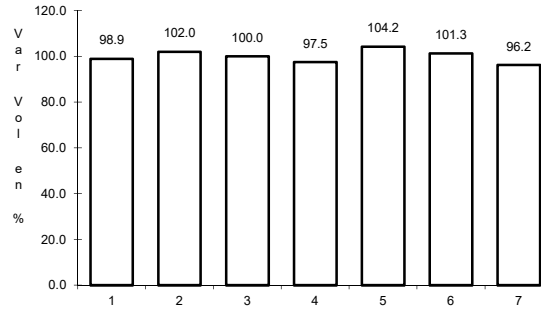
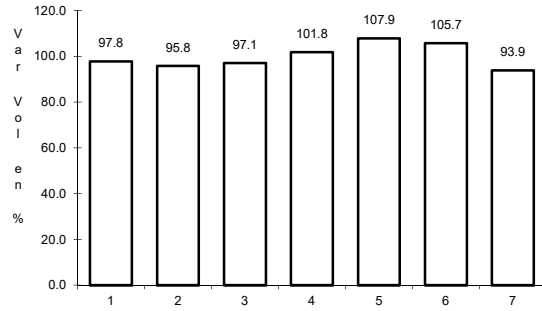
Km: 180.00 Tipo: 1 Sent: 1

Km: 180.00 Tipo: 1 Sent: 2

10 CARR: Jalpan de Serra - Rioverde

CLAVE: 00265

RUTA: MEX-069



Km: 0.00 Tipo: 3 Sent: 0

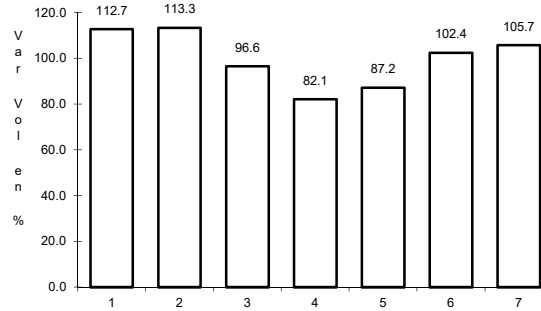
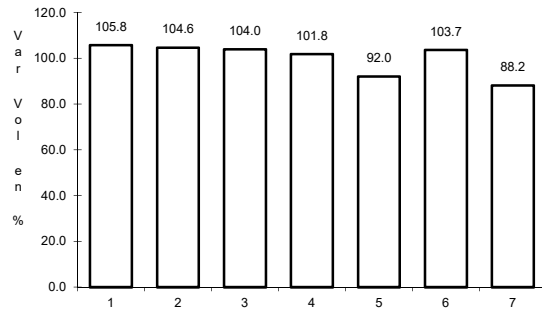
Km: 48.60 Tipo: 1 Sent: 0

Km: 105.43 Tipo: 1 Sent: 0

11 CARR: Libramiento de Cd. Valles

CLAVE: 24205

RUTA: MEX-070



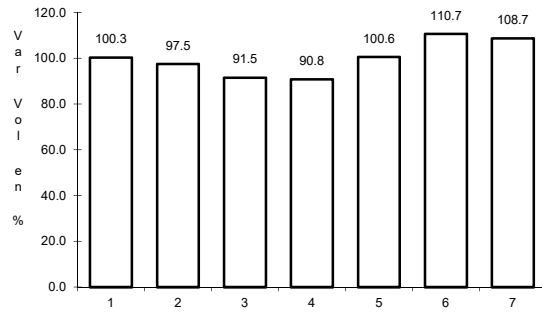
Km: 0.00 Tipo: 3 Sent: 0

Km: 11.54 Tipo: 1 Sent: 0

12 CARR: Libramiento de Villa de Reyes

CLAVE: 24010

RUTA: MEX-037

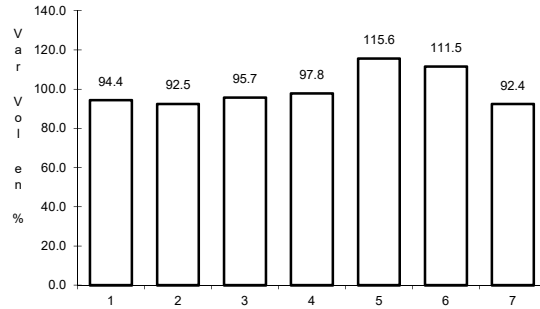


Km: 0.00 Tipo: 3 Sent: 0

13 CARR: Libramiento Villa de Arriaga

CLAVE: 24009

RUTA: MEX-080



Km: 0.00

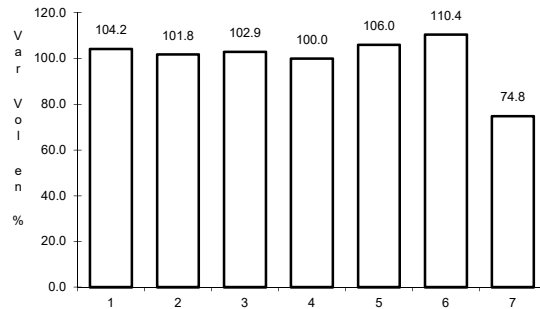
Tipo: 3

Sent: 0

14 CARR: Matehuala - Ent. Puerto México

CLAVE: 00405

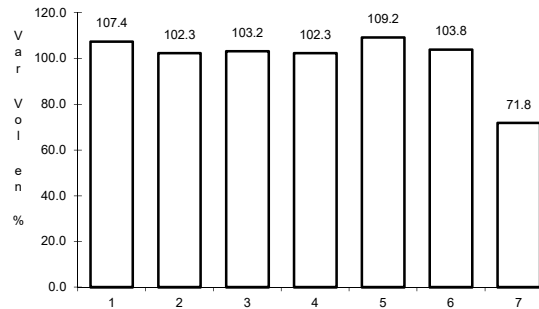
RUTA: MEX-057



Km: 0.00

Tipo: 3

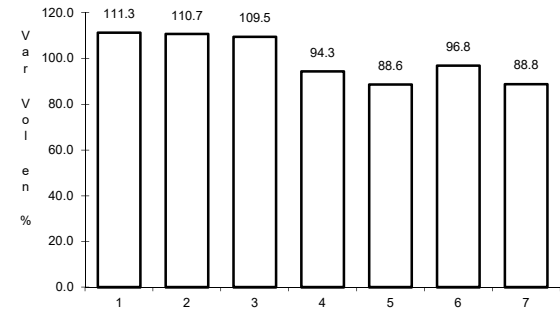
Sent: 1



Km: 0.00

Tipo: 3

Sent: 2



Km: 177.18

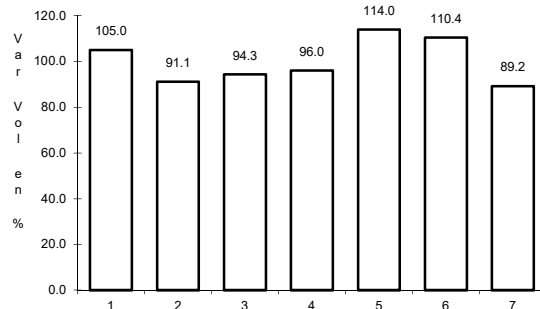
Tipo: 1

Sent: 1

15 CARR: Portezuelo - Cd. Valles

CLAVE: 00023

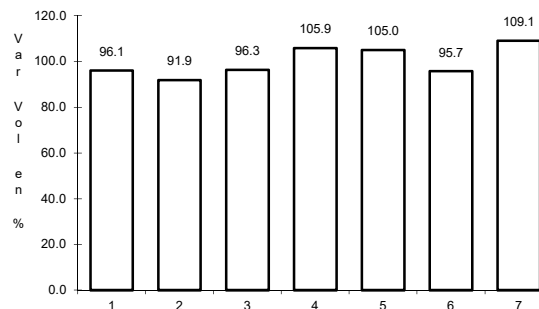
RUTA: MEX-085



Km: 0.00

Tipo: 3

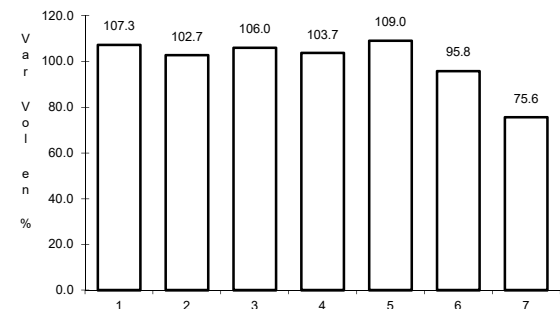
Sent: 0



Km: 154.00

Tipo: 3

Sent: 0



Km: 300.00

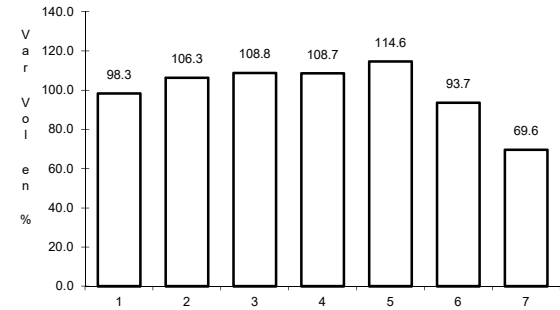
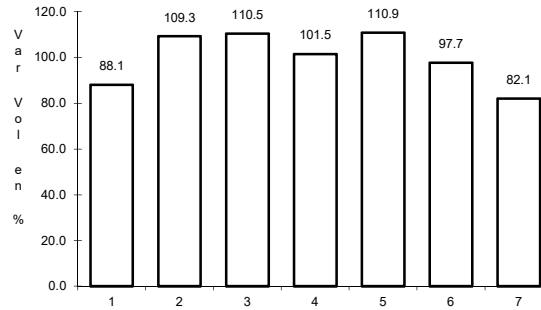
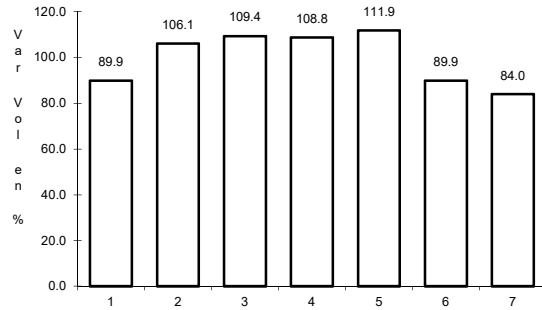
Tipo: 1

Sent: 0

16 CARR: Querétaro - San Luis Potosí

CLAVE: 00165

RUTA: MEX-057



Km: 6.28 Tipo: 3 Sent: 1

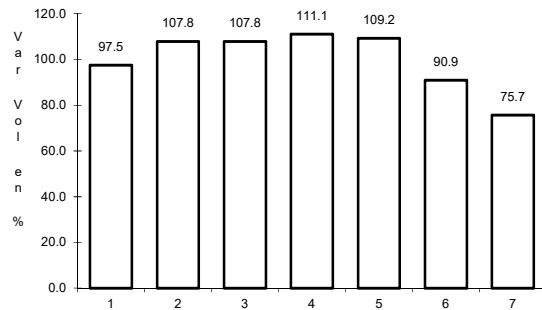
Km: 6.28 Tipo: 3 Sent: 2

Km: 184.80 Tipo: 1 Sent: 1

17 CARR: Ramal a Aeropuerto de S. L. P.

CLAVE: 24206

RUTA: MEX-057

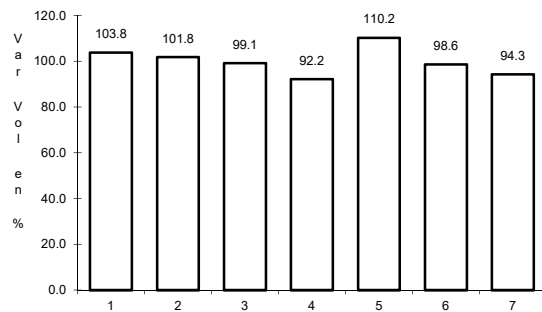


Km: 0.00 Tipo: 3 Sent: 0

18 CARR: Ramal a Ojo de Agua

CLAVE: 24023

RUTA: MEX-062

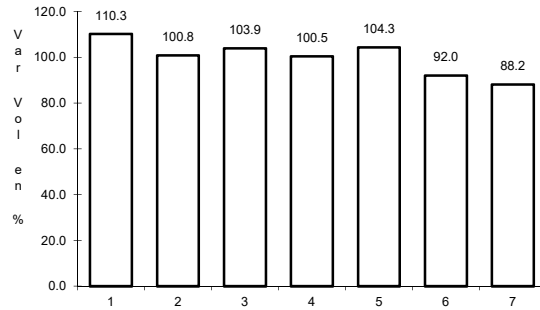


Km: 0.00 Tipo: 3 Sent: 0

19 CARR: Ramal a Rayón

CLAVE: 24626

RUTA: MEX-070



Km: 1.50

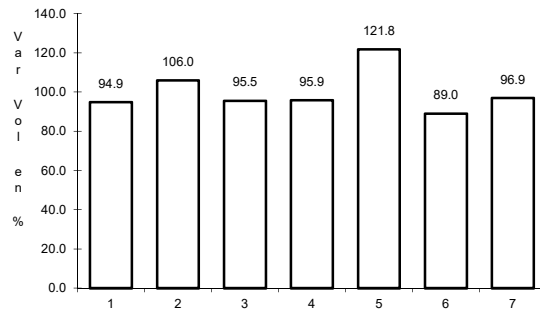
Tipo: 1

Sent: 0

20 CARR: San Juan del Río - Xilitla

CLAVE: 00183

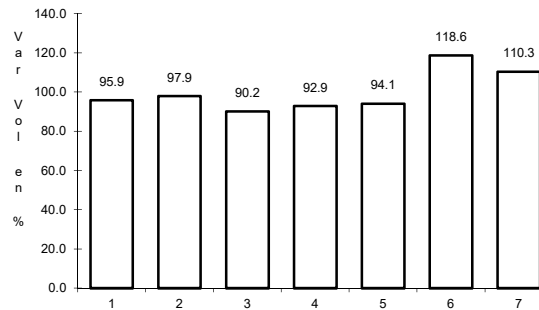
RUTA: MEX-120



Km: 5.20

Tipo: 3

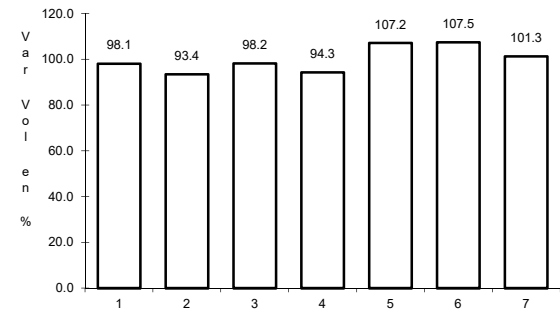
Sent: 1



Km: 5.20

Tipo: 3

Sent: 2



Km: 276.98

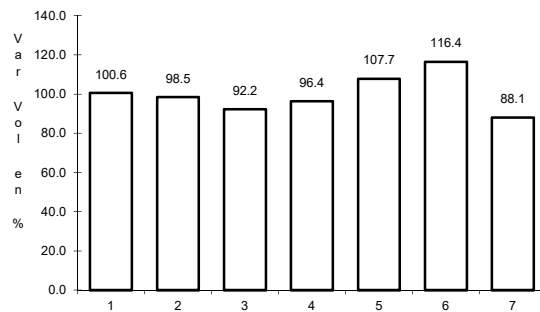
Tipo: 1

Sent: 0

21 CARR: San Luis Potosí - Ent. Arcinas

CLAVE: 00134

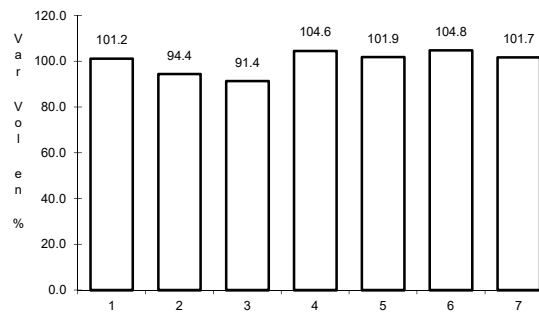
RUTA: MEX-049



Km: 9.35

Tipo: 3

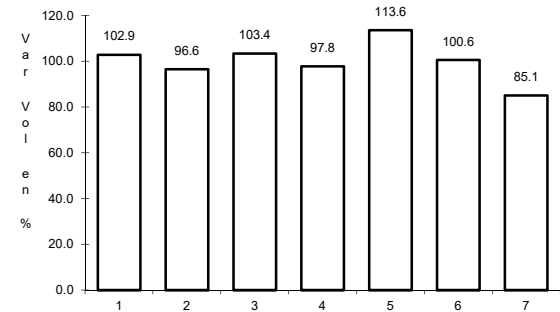
Sent: 1



Km: 9.35

Tipo: 3

Sent: 2



Km: 162.98

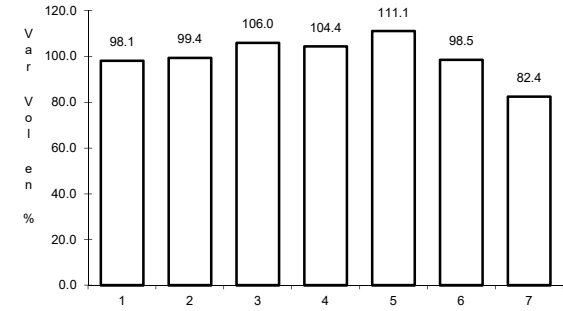
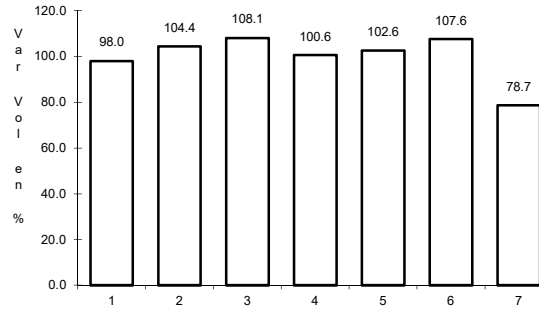
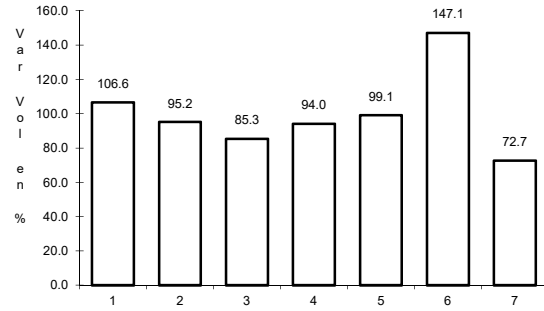
Tipo: 1

Sent: 1

22 CARR: San Luis Potosí - Lagos de Moreno

CLAVE: 00133

RUTA: MEX-070-080



Km: 0.00 Tipo: 3 Sent: 1

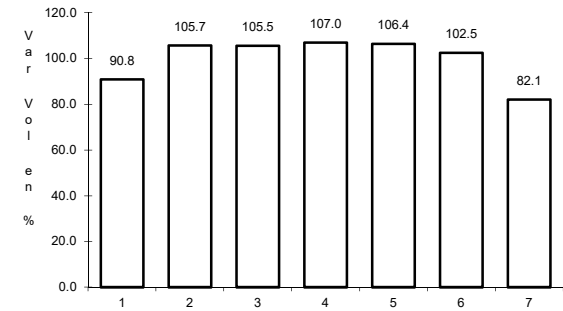
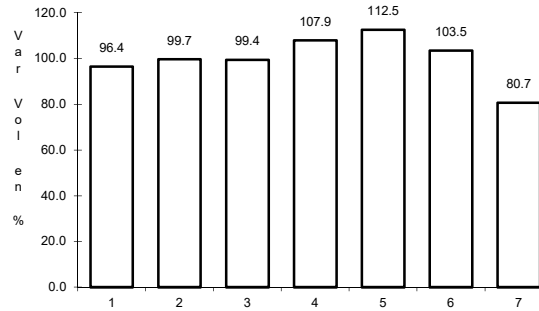
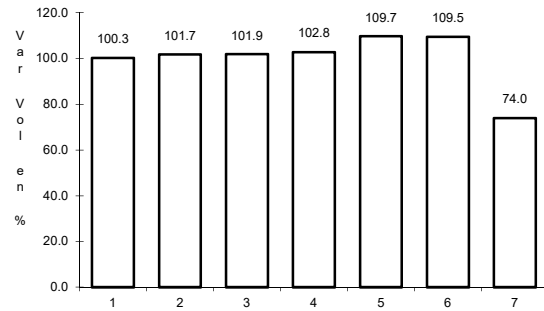
Km: 0.00 Tipo: 3 Sent: 2

Km: 61.90 Tipo: 3 Sent: 0

23 CARR: San Luis Potosí - Matehuala

CLAVE: 24508

RUTA: MEX-057



Km: 7.36 Tipo: 3 Sent: 1

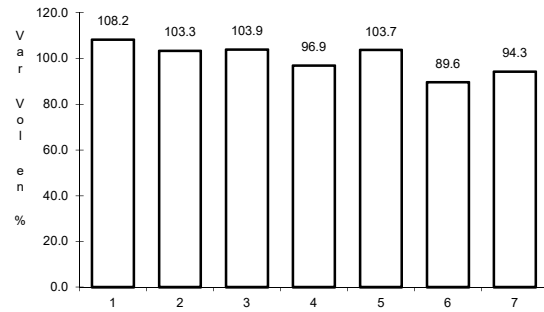
Km: 7.36 Tipo: 3 Sent: 2

Km: 187.39 Tipo: 1 Sent: 1

24 CARR: T. C. (Ent. El Huizache- Ant. Morelos)-El Salto

CLAVE: 24204

RUTA: MEX-080

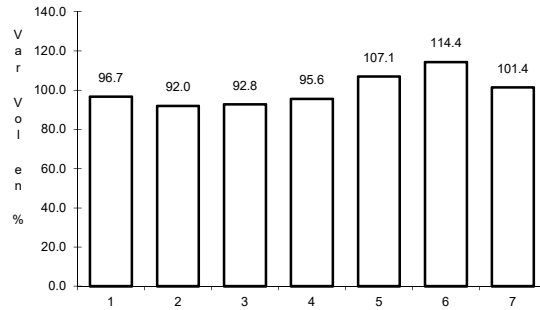


Km: 0.00 Tipo: 3 Sent: 0

25 CARR: T. C. (Qro - S.L.P.) - Tierra Nueva

CLAVE: 24203

RUTA: MEX-057



Km: 0.00

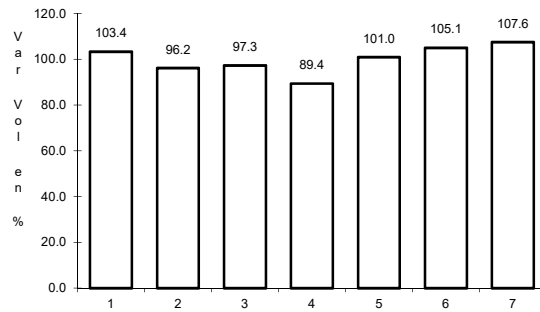
Tipo: 3

Sent: 0

26 CARR: T. C. (S.L.P. - Matchuala) - Villa Hidalgo

CLAVE: 24619

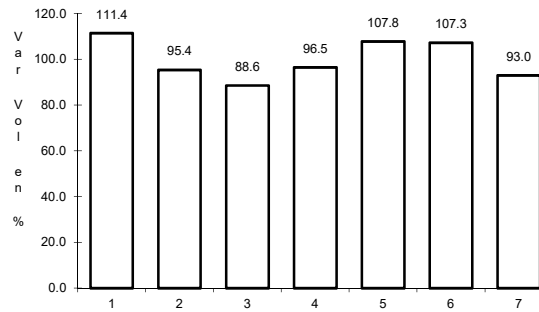
RUTA: MEX-057



Km: 0.00

Tipo: 3

Sent: 0



Km: 10.20

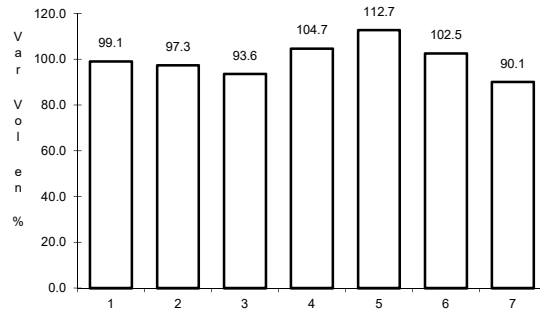
Tipo: 1

Sent: 0

27 CARR: Tamazunchale - San Felipe Orizatlán

CLAVE: 00609

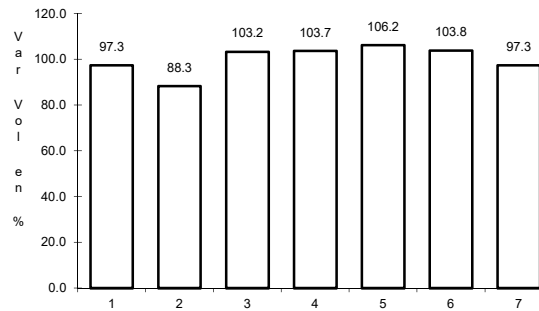
RUTA: MEX-085



Km: 0.00

Tipo: 3

Sent: 0



Km: 27.10

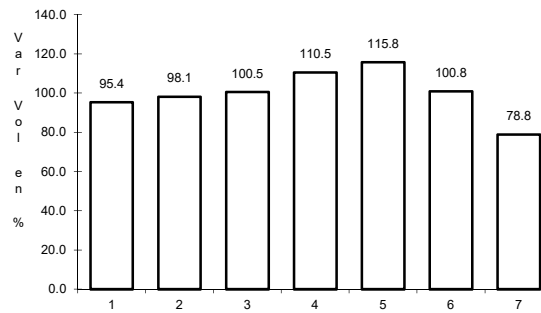
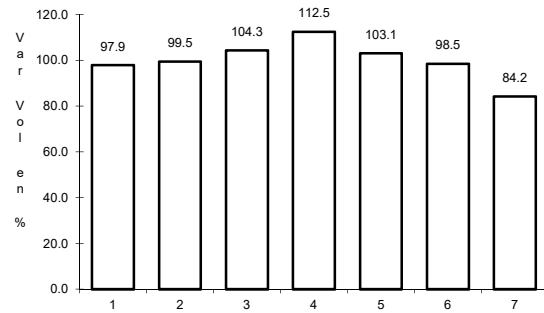
Tipo: 1

Sent: 0

28 CARR: Lagos de Moreno - Villa de Arriaga (Cuota)

CLAVE:

RUTA: MEX-080D



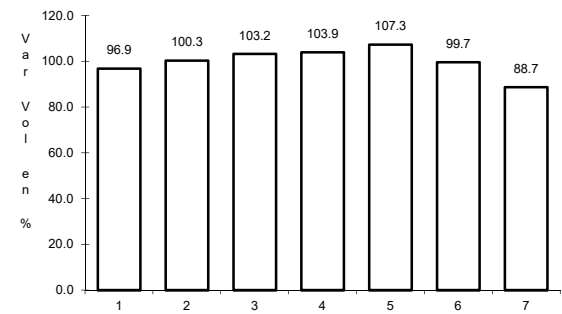
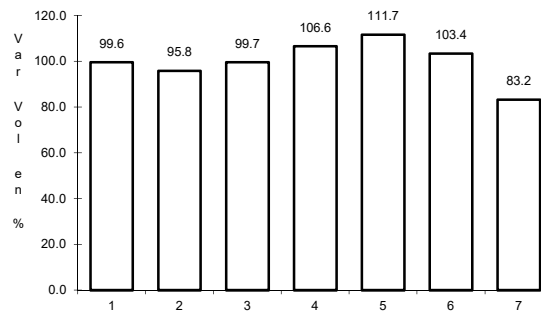
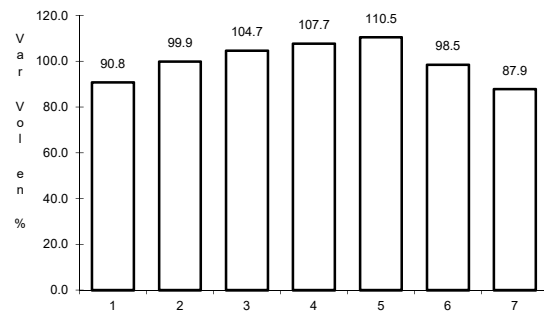
Km: 12.10 Tipo: 3 Sent: 0

Km: 78.00 Tipo: 1 Sent: 0

29 CARR: Libramiento de Matehuala (Cuota)

CLAVE: 24205

RUTA: MEX-057D



Km: 0.00 Tipo: 3 Sent: 1

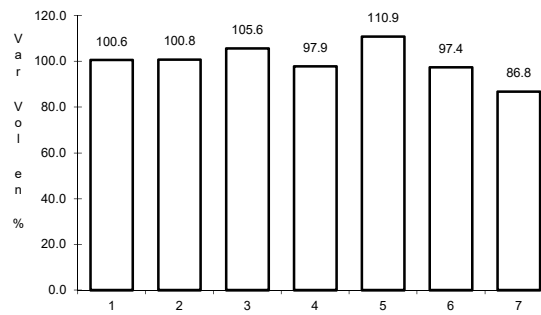
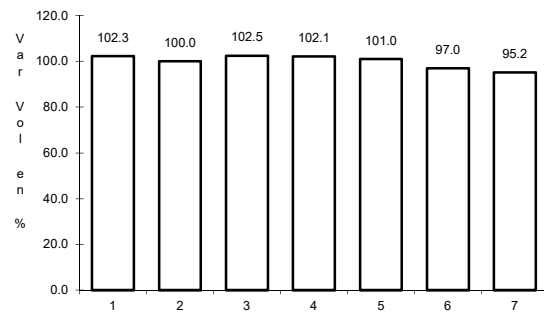
Km: 0.00 Tipo: 3 Sent: 2

Km: 14.20 Tipo: 1 Sent: 1

30 CARR: Libramiento Norponiente de San Luis Potosí (Cuota)

CLAVE:

RUTA: MEX-057D



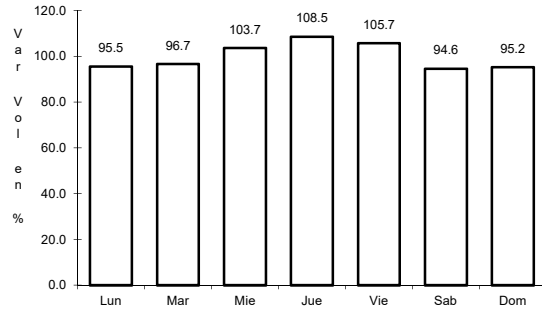
Km: 5.60 Tipo: 1 Sent: 0

Km: 5.60 Tipo: 3 Sent: 0

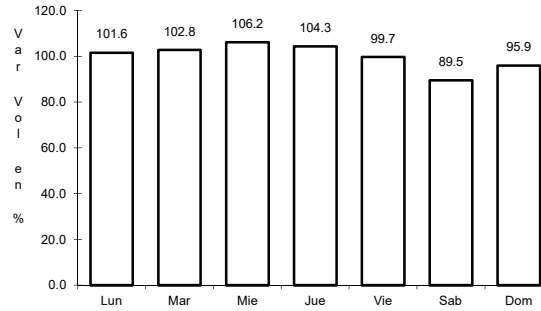
31 CARR: Libramiento Oriente de San Luis Potosí (Cuota)

CLAVE: 24009

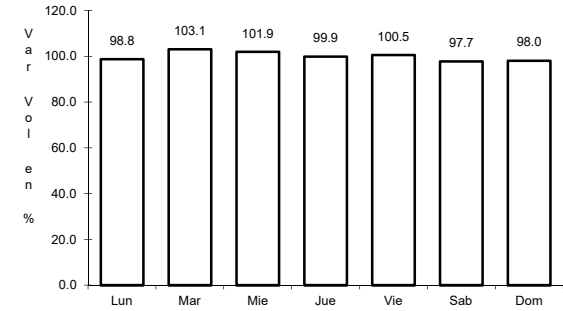
RUTA: MEX-057D



Km: 11.20 Tipo: 1 Sent: 1



Km: 11.20 Tipo: 1 Sent: 2

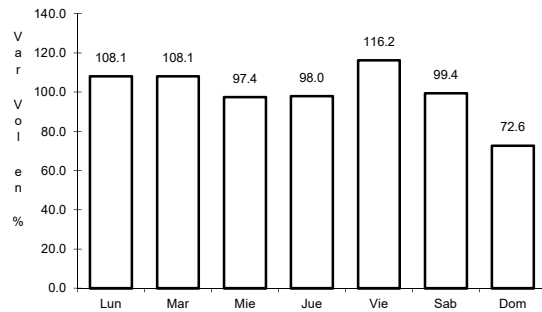


Km: 33.76 Tipo: 1 Sent: 1

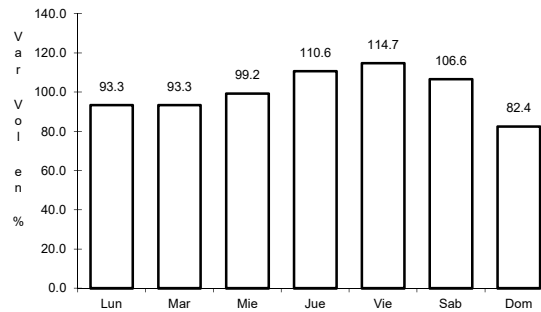
32 CARR: Rayón - Ent. Tamuín (Cuota)

CLAVE:

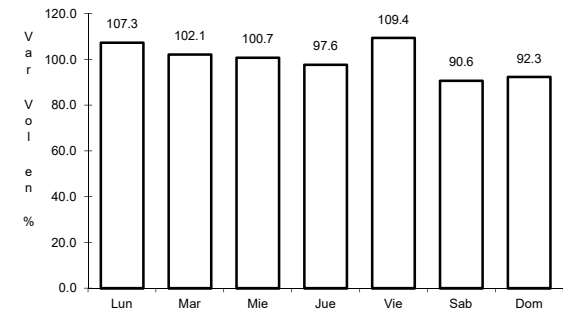
RUTA: MEX-070D



Km: 19.70 Tipo: 1 Sent: 0



Km: 19.70 Tipo: 3 Sent: 0

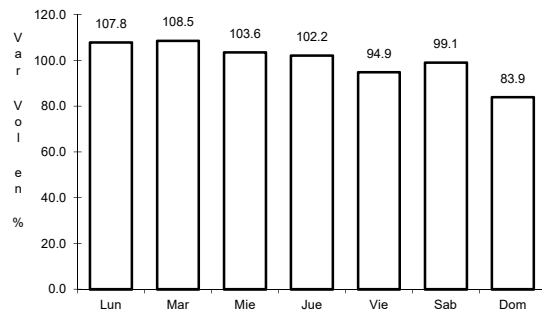


Km: 68.58 Tipo: 1 Sent: 0

33 CARR: Charcas - Villa Santo Domingo

CLAVE: 24624

RUTA: SLP-017

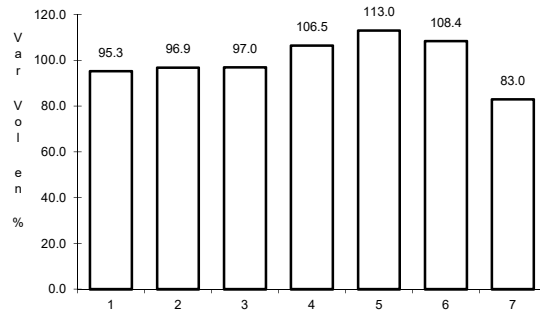


Km: 0.00 Tipo: 3 Sent: 0

34 CARR: Ébano - Estación Manuel

CLAVE: 24624

RUTA: SLP-TAM



Km: 0.00

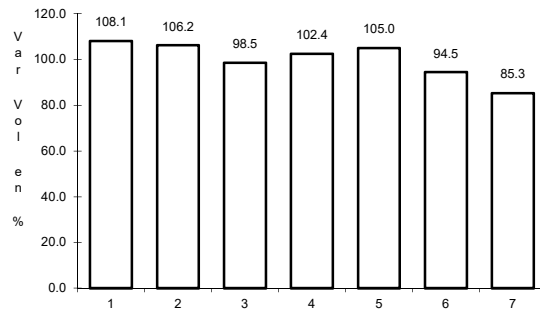
Tipo: 3

Sent: 0

35 CARR: Matchuala - La Paz

CLAVE: 24621

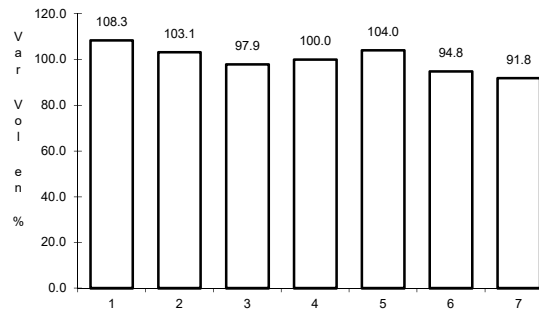
RUTA: SLP-020



Km: 0.00

Tipo: 3

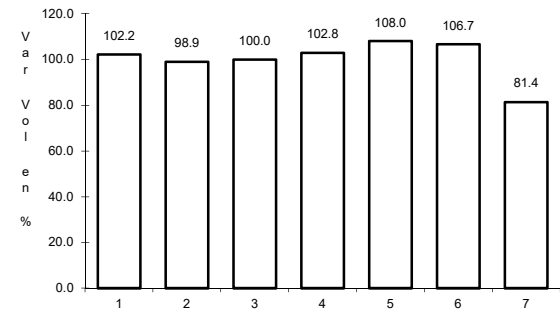
Sent: 1



Km: 0.00

Tipo: 3

Sent: 2



Km: 8.00

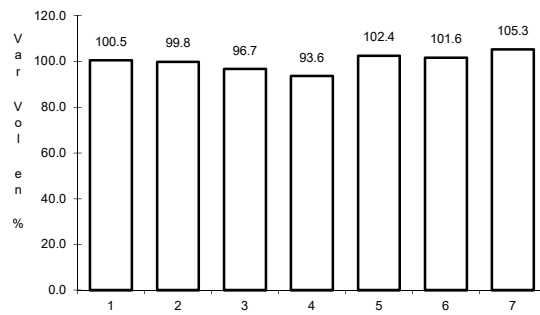
Tipo: 1

Sent: 1

36 CARR: Matchuala - La Poza

CLAVE: 00086

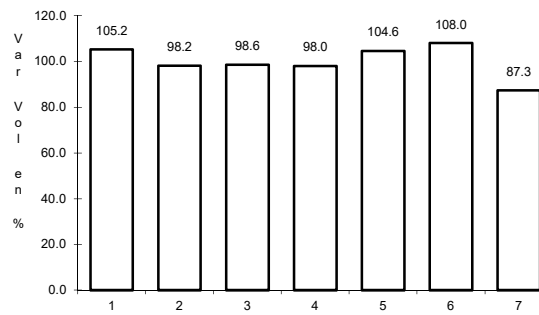
RUTA: SLP-029-NL-061



Km: 0.00

Tipo: 3

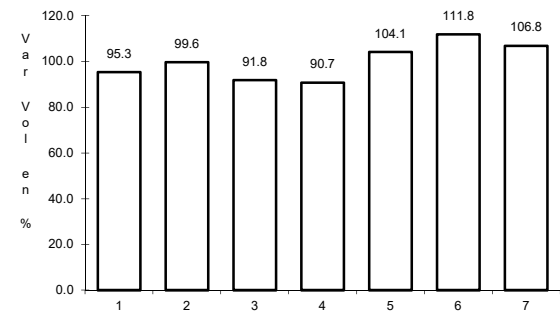
Sent: 0



Km: 49.00

Tipo: 1

Sent: 0



Km: 131.00

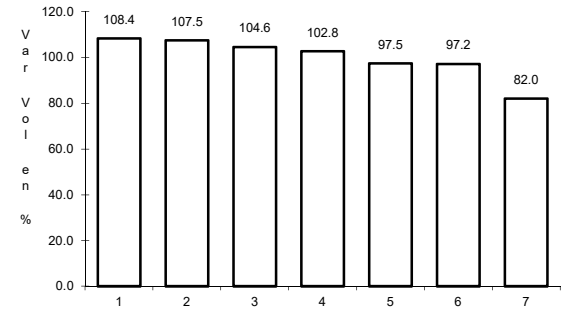
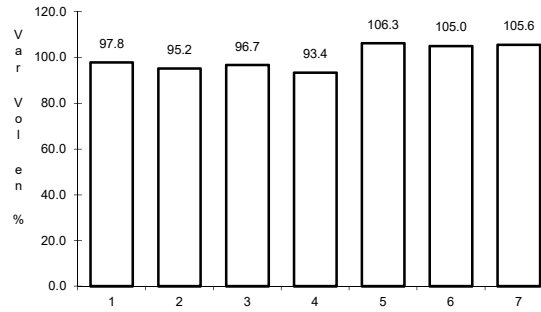
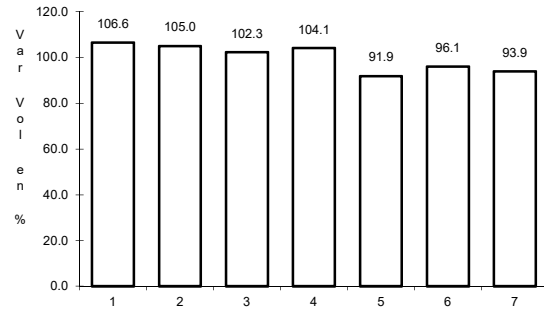
Tipo: 1

Sent: 0

37 CARR: Periférico de San Luis Potosí

CLAVE: 24618

RUTA: SLP-032



Km: 22.00 Tipo: 3 Sent: 1

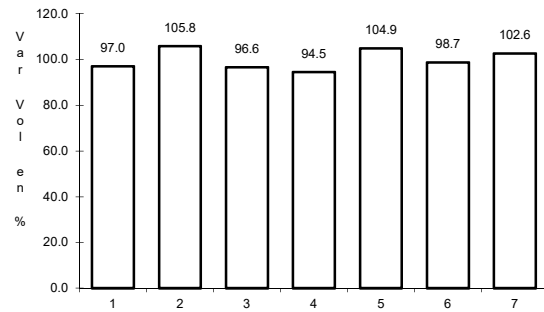
Km: 22.00 Tipo: 3 Sent: 2

Km: 30.70 Tipo: 1 Sent: 1

38 CARR: Ramal a Cerritos

CLAVE: 24615

RUTA: SLP-007

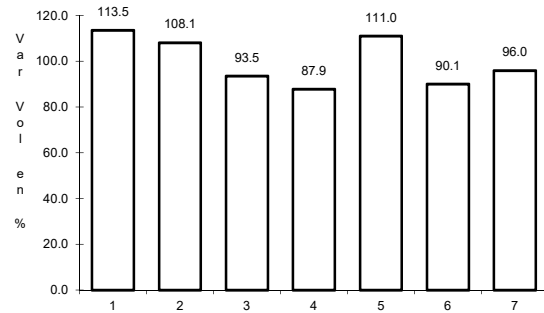


Km: 0.00 Tipo: 3 Sent: 0

39 CARR: Ramal a Pozo de Acuña

CLAVE: 24626

RUTA: SLP-009

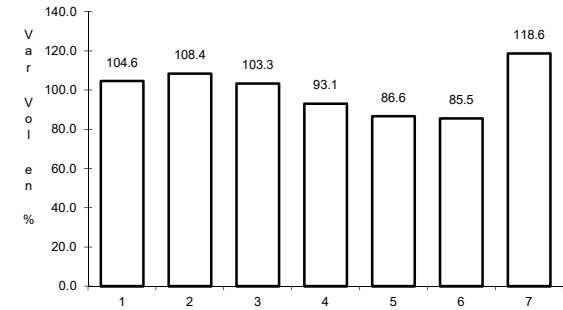
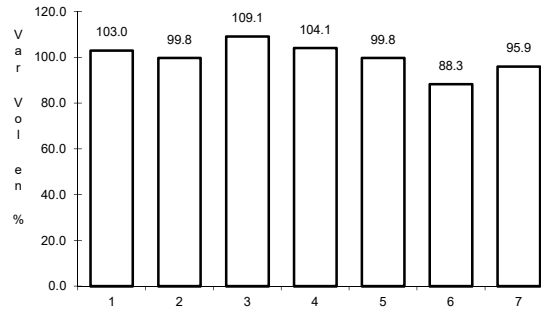
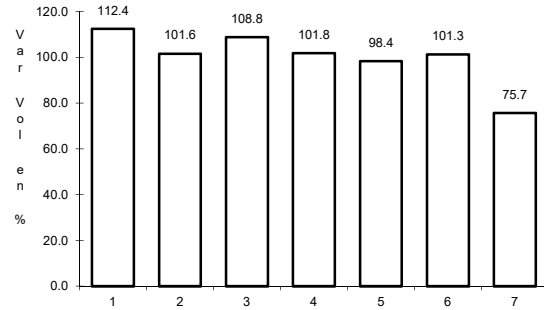


Km: 0.00 Tipo: 3 Sent: 0

40 CARR: Rayón - Arroyo Seco

CLAVE: 24008

RUTA: SLP-011



Km: 0.00 Tipo: 3 Sent: 0

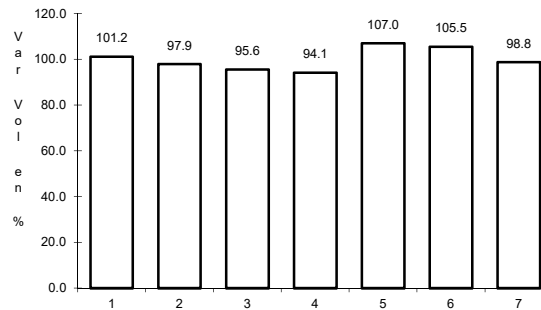
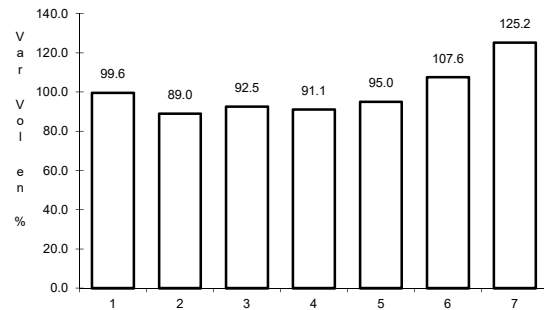
Km: 36.00 Tipo: 1 Sent: 0

Km: 57.00 Tipo: 1 Sent: 0

41 CARR: Santo Domingo - Cerro Gordo

CLAVE: 24614

RUTA: SLP-022



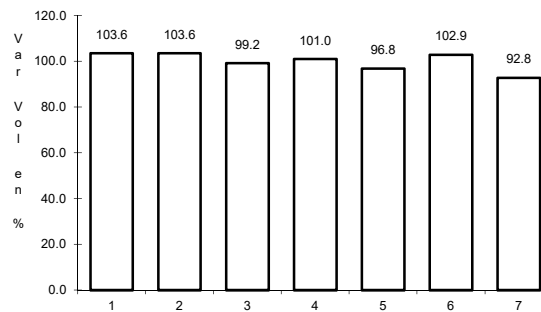
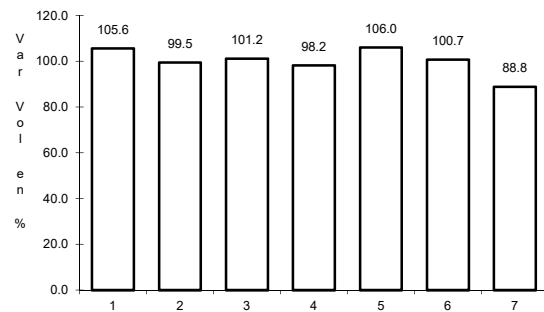
Km: 0.00 Tipo: 3 Sent: 0

Km: 19.00 Tipo: 1 Sent: 0

42 CARR: Tamuín - Estación F.F.C.C. Tamuín

CLAVE: 24022

RUTA: SLP-040



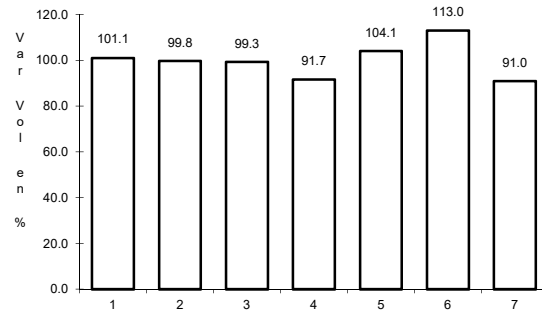
Km: 0.00 Tipo: 3 Sent: 0

Km: 10.00 Tipo: 1 Sent: 0

43 CARR: Tamuín - Xolol

CLAVE: 24027

RUTA: SLP-014



Km: 0.00

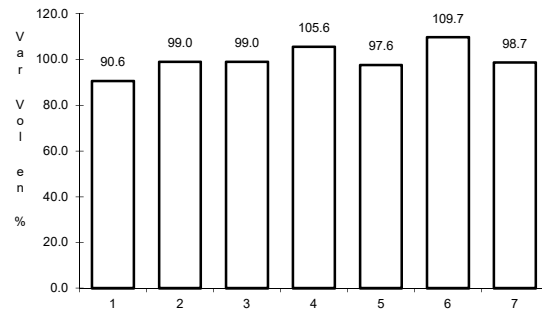
Tipo: 3

Sent: 0

44 CARR: Cerritos - Rioverde (Cuota)

CLAVE: 00138

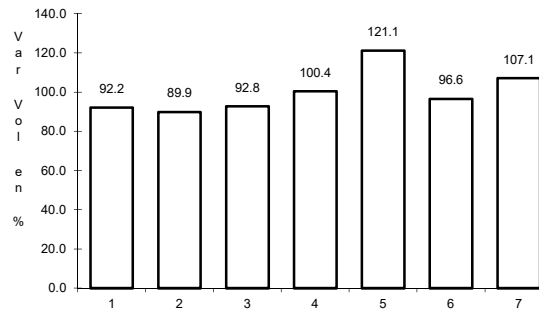
RUTA: SLP-D



Km: 0.00

Tipo: 3

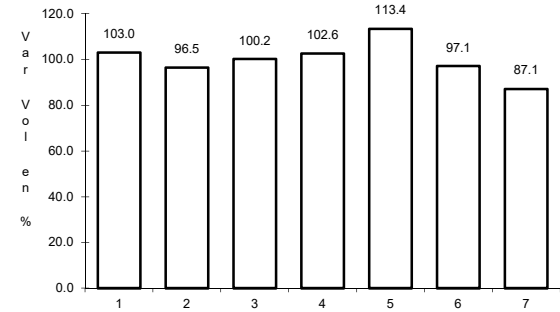
Sent: 0



Km: 58.00

Tipo: 3

Sent: 0



Km: 103.00

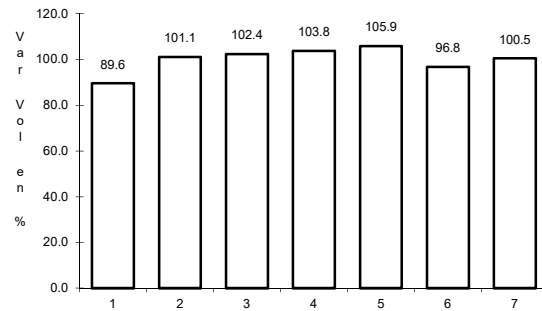
Tipo: 1

Sent: 0

45 CARR: San Luis Potosí - Villa de Arriaga (Cuota)

CLAVE: 24209

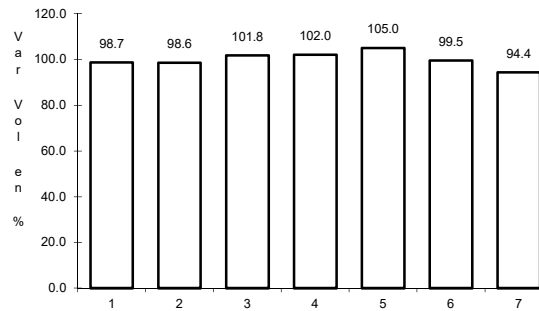
RUTA: SLP-D



Km: 0.00

Tipo: 3

Sent: 0



Km: 77.00

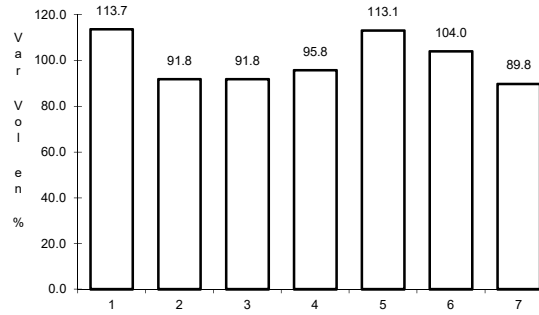
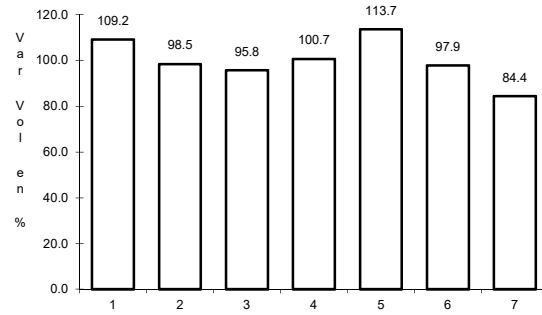
Tipo: 1

Sent: 0

46 CARR: Rayón - Cd. del Maíz

CLAVE: 24206

RUTA: MEX-070-SLP-005



Km: 15.80

Tipo: 1

Sent: 0

Km: 55.70

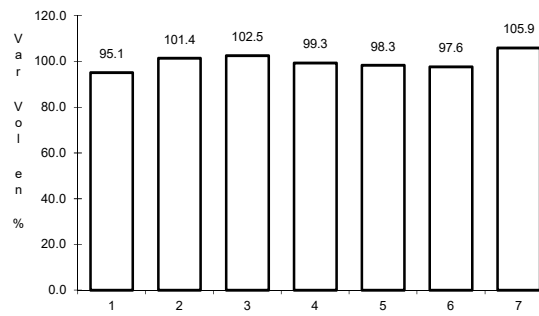
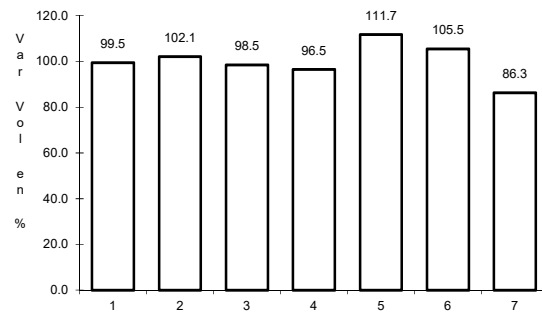
Tipo: 1

Sent: 0

47 CARR: San Lorenzo - Moctezuma

CLAVE: 24016

RUTA: MEX-063-SLP-012



Km: 0.00

Tipo: 3

Sent: 0

Km: 54.00

Tipo: 1

Sent: 0