

CHIHUAHUA

---RED FEDERAL LIBRE---

1 Cd. Juárez - Janos	MEX-002
2 Chihuahua - El Sueco	MEX-045
3 Chihuahua - Ojinaga	MEX-016
4 Delicias - Chihuahua (Libre)	MEX-045
5 El Sueco - Janos	MEX-010
6 Ent. Ciudad Camargo - Saucillo	MEX-045
7 Ent. La Zarca - Hidalgo del Parral	MEX-045
8 Gómez Palacio - Jiménez	MEX-049
9 Hidalgo del Parral - Ent. Nuevo Palomas (Vía Corta)	MEX-024
10 Hidalgo del Parral - Guadalupe y Calvo	MEX-024
11 Hidalgo del Parral - Jiménez	MEX-045
12 Janos - Agua Prieta	MEX-002
13 Jerónimo - Sta. Teresa	MEX-002
14 La Junta - Yécora	MEX-016
15 Libramiento de Delicias - Meoqui	MEX-045
16 Porvenir - Cd. Juárez	MEX-002
17 Ramal a Aeropuerto de Chihuahua	MEX-016
18 Ramal a Palomas	MEX-002
19 Villa Ahumada - Cd. Juárez (Libre)	MEX-045

---RED FEDERAL DE CUOTA---

20 Camargo - Delicias (Cuota)	MEX-045D
21 Chihuahua - Sacramento (Cuota)	MEX-045D
22 El Sueco - Villa Ahumada (Cuota)	MEX-045D
23 Gómez Palacio - Corralitos (Cuota)	MEX-049D
24 Jiménez - Camargo (Cuota)	MEX-045D
25 Libramiento Oriente Chihuahua (Cuota)	MEX-045D

---RED ESTATAL LIBRE---

26 Ahumada - Ricardo Flores Magón	CHIH
27 Cuauhtémoc - Buenaventura	CHIH
28 Delicias - Saucillo	CHIH-007
29 Ent. Peña Blanca - Ent. La Concha	CHIH
30 Ent. Puerto Justo - Ent. Guachochic	CHIH
31 Jiménez - Camargo	CHIH-049
32 Lázaro Cárdenas - Ent. Colonia San José	CHIH-004
33 Libramiento de Hidalgo del Parral	CHIH
34 Libramiento de Jiménez	CHIH
35 Meoqui - Julimes	CHIH-005
36 Ramal a Creel	CHIH
37 San Juanito - Ent. Basaseachi	CHIH
38 T. C. (Jiménez - Camargo) - Ojinaga	CHIH-018
39 T. Julimes - La Boquilla	CHIH-018

---RED ESTATAL DE CUOTA---

40 Ent. El Álamo - Ent. Ricardo Flores Magón (Cuota)	CHIH-D
41 Ricardo Flores Magón - Galeana (Cuota)	CHIH-D
42 Samalayuca - San Jerónimo (Cuota)	CHIH-D
43 T. C. (Chihuahua - Ojinaga) - La Mula (Cuota)	CHIH-D

---CARRETERAS INTEGRADAS POR TRAMOS FEDERALES Y ESTATALES---

44 Chihuahua - Madera	CHIH-D-MEX-001-CHIH
45 Ent. Agua Caliente - El Terrero	CHIH-MEX

CHIHUAHUA

1 CARR: Cd. Juárez - Janos

CLAVE: 08041

RUTA: MEX-002

AÑO: 2016

LUGAR	ESTACION				CLASIFICACION VEHICULAR EN PORCIENTO													COORDENADAS		
	KM	TE	SC	TDPA	M	A	B	C2	C3	T3S2	T3S3	T3S2R4	OTROS	A	B	C	K'	D	LATITUD	LONGITUD
T. C. El Sueco - Cd. Juárez	0.00	3	1	6751	0.8	81.7	3.9	5.2	1.2	3.6	1.7	1.4	0.5	82.5	3.9	13.6	0.073	0.513	31.605770	-106.485647
T. C. El Sueco - Cd. Juárez	0.00	3	2	7123	2.3	78.4	4.3	5.5	1.2	4.4	1.8	1.5	0.6	80.7	4.3	15.0	0.058	0.513	31.605765	-106.485654
T. Der. Palomas	112.00	1	0	1544	0.2	69.8	3.2	12.9	1.0	9.0	1.6	1.9	0.4	70.0	3.2	26.8	0.095	0.517	31.471315	-107.609007
Ascención	170.95	1	0	3310	0.4	71.1	2.6	12.1	2.6	6.6	1.3	2.8	0.5	71.5	2.6	25.9	0.073	0.518	31.111205	-107.980022
Janos	205.00	1	0	3444	0.4	71.7	2.7	11.8	2.7	6.0	1.4	2.7	0.6	72.1	2.7	25.2	0.071	0.512	30.896222	-108.182527

2 CARR: Chihuahua - El Sueco

CLAVE: 08419

RUTA: MEX-045

AÑO: 2016

LUGAR	ESTACION				CLASIFICACION VEHICULAR EN PORCIENTO													COORDENADAS		
	KM	TE	SC	TDPA	M	A	B	C2	C3	T3S2	T3S3	T3S2R4	OTROS	A	B	C	K'	D	LATITUD	LONGITUD
Chihuahua	0.00																			
San Cristóbal	24.00	1	0	3812	1.3	62.7	1.6	11.0	1.7	16.8	3.1	1.0	0.8	64.0	1.6	34.4	0.077	0.527	28.799025	-106.216059
T. C. Chihuahua - Sacramento (Cuota)	32.00	1	0	4175	1.1	70.0	2.6	4.8	2.9	14.2	2.5	1.3	0.6	71.1	2.6	26.3	0.090	0.525	28.855031	-106.214968
T. C. Chihuahua - Sacramento (Cuota)	32.00	3	1	6550	0.9	62.0	5.6	10.5	1.5	14.0	2.2	2.4	0.9	62.9	5.6	31.5	0.079	0.507	28.869437	-106.228301
T. C. Chihuahua - Sacramento (Cuota)	32.00	3	2	6744	0.8	58.4	6.1	12.1	1.7	14.9	2.4	2.6	1.0	59.2	6.1	34.7	0.088	0.507	28.869442	-106.228289
T. Der. El Sauz	55.38	1	1	5190	1.7	71.3	3.6	4.0	1.3	13.2	1.6	2.4	0.9	73.0	3.6	23.4	0.098	0.509	29.049654	-106.329100
T. Der. El Sauz	55.38	1	2	5003	0.4	69.3	4.0	4.4	1.4	14.9	1.8	2.7	1.1	69.7	4.0	26.3	0.108	0.509	29.049653	-106.329103
Ent. El Sueco	155.87	1	1	3766	0.3	69.3	4.7	6.7	1.1	13.5	1.8	1.8	0.8	69.6	4.7	25.7	0.108	0.509	29.879940	-106.394364
Ent. El Sueco	155.87	1	2	3632	0.4	66.3	5.2	7.2	1.3	14.8	2.0	2.0	0.8	66.7	5.2	28.1	0.094	0.509	29.879938	-106.394341

3 CARR: Chihuahua - Ojinaga

CLAVE: 08042

RUTA: MEX-016

AÑO: 2016

LUGAR	ESTACION				CLASIFICACION VEHICULAR EN PORCIENTO													COORDENADAS		
	KM	TE	SC	TDPA	M	A	B	C2	C3	T3S2	T3S3	T3S2R4	OTROS	A	B	C	K'	D	LATITUD	LONGITUD
Chihuahua	0.00																			
T. Der. Aeropuerto	6.50	1	1	14137	1.1	84.6	0.8	5.8	0.9	3.4	1.9	0.7	0.8	85.7	0.8	13.5	0.097	0.527	28.685968	-106.015497
T. Der. Aeropuerto	6.50	1	2	12694	1.2	82.6	0.9	7.0	0.9	3.8	2.1	0.7	0.8	83.8	0.9	15.3	0.090	0.527	28.685970	-106.015493
T. Der. Aeropuerto	6.50	3	1	8910	1.1	86.9	0.7	6.8	0.8	1.5	1.5	0.3	0.4	88.0	0.7	11.3	0.084	0.519	28.691805	-106.012031
T. Der. Aeropuerto	6.50	3	2	9618	0.8	86.2	0.7	7.5	0.8	1.6	1.7	0.3	0.4	87.0	0.7	12.3	0.090	0.519	28.691789	-106.011985
Aldama	26.80	1	1	5559	1.0	81.0	1.8	13.1	0.7	1.3	0.9	0.0	0.2	82.0	1.8	16.2	0.086	0.502	28.818940	-105.925296
Aldama	26.80	1	2	5517	0.9	80.4	2.2	13.3	0.7	1.4	0.9	0.0	0.2	81.3	2.2	16.5	0.107	0.502	28.818932	-105.925275
Aldama	26.80	3	0	1265	0.2	82.9	1.1	5.7	1.7	4.2	3.2	0.3	0.7	83.1	1.1	15.8	0.130	0.515	28.851453	-105.872067
El Morrión	84.00	3	0	1193	0.4	80.8	1.3	6.9	1.7	4.4	3.6	0.3	0.6	81.2	1.3	17.5	0.185	0.515	29.071764	-105.599078
Coyame	141.00	1	0	481	0.2	65.1	1.3	24.3	2.7	3.4	2.8	0.1	0.1	65.3	1.3	33.4	0.116	0.513	29.452248	-105.095346

CHIHUAHUA

3 CARR: Chihuahua - Ojinaga

CLAVE: 08042

RUTA: MEX-016

AÑO: 2016

LUGAR	ESTACION	CLASIFICACION VEHICULAR EN PORCIENTO														COORDENADAS				
		KM	TE	SC	TDPA	M	A	B	C2	C3	T3S2	T3S3	T3S2R4	OTROS	A	B	C	K'	D	LATITUD
Ojinaga	224.00	1	0	2435	0.5	70.9	0.3	23.9	1.4	1.8	0.8	0.1	0.3	71.4	0.3	28.3	0.115	0.515	29.541274	-104.443122

4 CARR: Delicias - Chihuahua (Libre)

CLAVE: 08418

RUTA: MEX-045

AÑO: 2016

LUGAR	ESTACION	CLASIFICACION VEHICULAR EN PORCIENTO														COORDENADAS					
		KM	TE	SC	TDPA	M	A	B	C2	C3	T3S2	T3S3	T3S2R4	OTROS	A	B	C	K'	D	LATITUD	LONGITUD
Delicias	138.00																				
T. Der. Lazáro Cárdenas	166.87	1	1	8164	0.5	72.8	4.7	7.5	1.4	8.8	1.7	1.6	1.0	73.3	4.7	22.0	0.087	0.512	28.381362	-105.622482	
T. Der. Lazáro Cárdenas	166.87	1	2	8572	0.2	74.0	4.7	9.2	1.5	6.4	1.8	1.6	0.6	74.2	4.7	21.1	0.080	0.512	28.381358	-105.622485	
T. Der. Lazáro Cárdenas	166.87	3	1	7910	0.4	69.6	4.2	9.3	1.5	10.2	2.0	1.8	1.0	70.0	4.2	25.8	0.116	0.506	28.390946	-105.635283	
T. Der. Lazáro Cárdenas	166.87	3	2	7712	0.3	72.9	3.5	5.8	2.1	10.4	2.1	1.9	1.0	73.2	3.5	23.3	0.081	0.506	28.390945	-105.635284	
T. Der. Aquiles Serdán	210.00	1	1	8384	1.2	72.9	3.0	9.1	1.7	7.5	2.0	1.5	1.1	74.1	3.0	22.9	0.105	0.509	28.586709	-105.960431	
T. Der. Aquiles Serdán	210.00	1	2	8687	0.7	74.6	3.2	8.7	1.7	6.7	1.8	1.5	1.1	75.3	3.2	21.5	0.083	0.509	28.586705	-105.960434	
Chihuahua	222.56																				

5 CARR: El Sueco - Janos

CLAVE: 08037

RUTA: MEX-010

AÑO: 2016

LUGAR	ESTACION	CLASIFICACION VEHICULAR EN PORCIENTO														COORDENADAS				
		KM	TE	SC	TDPA	M	A	B	C2	C3	T3S2	T3S3	T3S2R4	OTROS	A	B	C	K'	D	LATITUD
El Sueco	0.00	3	0	533	0.2	35.6	1.8	13.2	1.5	37.2	5.9	4.2	0.4	35.8	1.8	62.4	0.086	0.547	29.893736	-106.401816
Ricardo Flores Magón	59.00	3	0	3773	1.1	53.9	3.1	12.3	2.5	18.6	4.0	3.7	0.8	55.0	3.1	41.9	0.071	0.501	29.944935	-106.971453
Buenaventura	114.00	1	0	1560	0.8	73.5	2.1	13.6	1.4	5.9	2.0	0.4	0.3	74.3	2.1	23.6	0.079	0.501	29.853409	-107.444543
Buenaventura	114.00	3	0	4549	1.2	71.1	1.1	21.1	0.8	3.3	0.8	0.3	0.3	72.3	1.1	26.6	0.080	0.501	29.867630	-107.478758
Nuevo Casas Grandes	195.00	3	0	9116	0.6	70.2	1.5	13.4	1.2	8.7	2.3	1.7	0.4	70.8	1.5	27.7	0.071	0.507	30.462054	-107.918162
Janos	257.00	1	0	4461	0.5	62.7	4.1	12.4	1.6	11.3	3.9	2.9	0.6	63.2	4.1	32.7	0.062	0.509	30.887599	-108.187359

6 CARR: Ent. Ciudad Camargo - Saucillo

CLAVE: 08417

RUTA: MEX-045

AÑO: 2016

LUGAR	ESTACION	CLASIFICACION VEHICULAR EN PORCIENTO														COORDENADAS				
		KM	TE	SC	TDPA	M	A	B	C2	C3	T3S2	T3S3	T3S2R4	OTROS	A	B	C	K'	D	LATITUD
Camargo	0.00	3	0	4178	0.6	67.0	1.8	12.3	1.3	13.0	2.4	1.0	0.6	67.6	1.8	30.6	0.074	0.502	27.731278	-105.190158
T. Der. La Cruz	20.92	3	0	4638	0.9	68.3	5.1	9.6	1.4	10.6	2.0	1.3	0.8	69.2	5.1	25.7	0.083	0.506	27.872903	-105.217199
Saucillo	42.52	1	0	4073	0.6	72.6	2.1	14.6	1.3	6.2	1.5	0.5	0.6	73.2	2.1	24.7	0.071	0.522	28.018763	-105.290288

CHIHUAHUA

7 CARR: Ent. La Zarca - Hidalgo del Parral

CLAVE: 00488

RUTA: MEX-045

AÑO: 2016

LUGAR	ESTACION				CLASIFICACION VEHICULAR EN PORCIENTO												COORDENADAS			
	KM	TE	SC	TDPA	M	A	B	C2	C3	T3S2	T3S3	T3S2R4	OTROS	A	B	C	K'	D	LATITUD	LONGITUD
Ent. La Zarca	0.00	3	0	979	0.9	68.0	4.8	11.1	3.4	7.6	3.4	0.5	0.3	68.9	4.8	26.3	0.088	0.511	25.784635	-104.764860
T. Der. Ceballos	47.85	1	0	698	0.3	72.8	6.1	9.4	2.5	5.1	2.9	0.3	0.6	73.1	6.1	20.8	0.107	0.518	26.139807	-105.028681
T. Der. Ceballos	47.85	3	0	1422	1.5	68.9	3.9	14.8	2.0	4.3	2.9	1.7	0.0	70.4	3.9	25.7	0.076	0.501	26.144320	-105.032094
T. Izq. Canutillo	92.35	3	0	964	0.2	82.0	4.9	5.2	2.4	2.8	2.2	0.3	0.0	82.2	4.9	12.9	0.081	0.500	26.389452	-105.354712
Las Nieves	97.60	3	0	2290	0.6	76.5	2.7	12.7	1.4	3.5	1.7	0.4	0.5	77.1	2.7	20.2	0.079	0.519	26.400053	-105.405932
T. Izq. Ocampo	109.22	3	0	1511	0.2	72.2	4.3	14.0	2.2	4.1	2.7	0.1	0.2	72.4	4.3	23.3	0.068	0.533	26.447417	-105.495111
Lim. Edos. Term. Dgo. Ppia. Chih.	122.89																			
Matamoros	148.00	1	0	1300	0.3	69.3	3.9	18.4	1.8	3.8	2.3	0.1	0.1	69.6	3.9	26.5	0.100	0.503	26.750988	-105.581026
Hidalgo del Parral	171.00	1	0	3362	1.1	78.1	2.1	13.2	1.4	2.9	0.7	0.1	0.4	79.2	2.1	18.7	0.083	0.505	26.917806	-105.640528

8 CARR: Gómez Palacio - Jiménez

CLAVE: 00006

RUTA: MEX-049

AÑO: 2016

LUGAR	ESTACION				CLASIFICACION VEHICULAR EN PORCIENTO												COORDENADAS			
	KM	TE	SC	TDPA	M	A	B	C2	C3	T3S2	T3S3	T3S2R4	OTROS	A	B	C	K'	D	LATITUD	LONGITUD
Gómez Palacio	0.00	3	1	15048	4.1	71.2	2.5	8.2	2.7	6.3	1.8	2.9	0.3	75.3	2.5	22.2	0.076	0.503	25.615577	-103.514083
Gómez Palacio	0.00	3	2	14850	2.6	69.2	2.6	9.6	3.2	7.5	2.0	3.0	0.3	71.8	2.6	25.6	0.068	0.503	25.615572	-103.514086
X. C. La Torreña - Brittingham	10.96	1	1	9259	2.8	66.7	3.8	8.0	2.9	9.6	3.1	2.1	1.0	69.5	3.8	26.7	0.076	0.508	25.639220	-103.523558
X. C. La Torreña - Brittingham	10.96	1	2	9547	2.9	63.9	4.2	8.6	3.3	10.5	3.1	2.4	1.1	66.8	4.2	29.0	0.086	0.508	25.639249	-103.523563
T. Izq. Dinamita	26.27	1	1	6135	1.8	62.3	4.0	8.0	3.7	12.9	3.2	3.2	0.9	64.1	4.0	31.9	0.075	0.517	25.753739	-103.568959
T. Izq. Dinamita	26.27	1	2	5736	2.5	58.2	4.2	8.6	4.4	14.1	3.7	3.4	0.9	60.7	4.2	35.1	0.067	0.517	25.753739	-103.568959
Bermejillo	39.30	1	0	6861	1.4	63.3	3.0	8.7	2.5	14.9	3.4	1.8	1.0	64.7	3.0	32.3	0.063	0.501	25.874706	-103.616590
T. Izq. Ent. La Zarca	40.89	3	0	3302	0.8	41.7	3.3	10.8	3.8	28.5	6.6	3.3	1.2	42.5	3.3	54.2	0.057	0.505	25.903756	-103.628580
Yermo	107.95	1	0	2593	0.7	34.4	4.3	9.3	3.2	34.7	7.8	4.4	1.2	35.1	4.3	60.6	0.054	0.508	26.378083	-103.993805
Yermo	107.95	3	0	2837	0.5	32.1	3.6	9.6	3.0	38.1	7.4	4.6	1.1	32.6	3.6	63.8	0.051	0.510	26.395778	-104.010253
Ceballos	127.20	1	0	2700	1.1	39.8	5.2	8.3	4.6	27.2	7.7	4.7	1.4	40.9	5.2	53.9	0.054	0.511	26.517889	-104.121556
Ceballos	127.20	3	0	2529	1.2	34.6	4.0	13.2	4.2	30.4	7.2	4.1	1.1	35.8	4.0	60.2	0.065	0.510	26.536704	-104.139051
Lim. Edos. Term. Dgo. Ppia. Chih.	146.15																			
Estación Escalón	160.89	3	0	2146	1.2	30.7	5.0	8.9	4.3	34.8	8.2	5.7	1.2	31.9	5.0	63.1	0.051	0.514	26.756556	-104.341694
Jiménez	223.00	1	1	1218	0.3	41.0	6.6	6.4	4.1	29.7	7.6	3.5	0.8	41.3	6.6	52.1	0.059	0.504	27.117662	-104.890933
Jiménez	223.00	1	2	1196	0.6	37.4	7.2	6.6	4.7	30.2	8.6	3.8	0.9	38.0	7.2	54.8	0.064	0.504	27.117583	-104.890972

CHIHUAHUA

9 CARR: Hidalgo del Parral - Ent. Nuevo Palomas (Vía Corta)

CLAVE: 08811

RUTA: MEX-024

AÑO: 2016

LUGAR	ESTACION				CLASIFICACION VEHICULAR EN PORCIENTO										COORDENADAS					
	KM	TE	SC	TDPA	M	A	B	C2	C3	T3S2	T3S3	T3S2R4	OTROS	A	B	C	K'	D	LATITUD	LONGITUD
Hidalgo del Parral	0.00	3	0	4929	0.5	72.1	3.0	12.0	3.1	4.9	2.7	1.1	0.6	72.6	3.0	24.4	0.086	0.504	26.981057	-105.663786
Valle Zaragoza	66.00	1	0	3139	0.5	72.8	3.1	7.8	2.3	6.9	4.1	1.4	1.1	73.3	3.1	23.6	0.086	0.519	27.438494	-105.805349
Satevo	126.00	3	0	3554	0.3	68.1	3.1	15.2	1.5	6.8	3.5	1.0	0.5	68.4	3.1	28.5	0.095	0.509	27.975347	-106.124345
T. C. Chihuahua - Madera	182.40	1	0	4273	1.3	67.9	2.7	15.0	2.6	5.5	3.6	1.2	0.2	69.2	2.7	28.1	0.085	0.505	28.355979	-106.262291

10 CARR: Hidalgo del Parral - Guadalupe y Calvo

CLAVE: 00802

RUTA: MEX-024

AÑO: 2016

LUGAR	ESTACION				CLASIFICACION VEHICULAR EN PORCIENTO										COORDENADAS					
	KM	TE	SC	TDPA	M	A	B	C2	C3	T3S2	T3S3	T3S2R4	OTROS	A	B	C	K'	D	LATITUD	LONGITUD
T. C. Hidalgo del Parral - Santa Bárbara	0.00	3	0	2877	0.9	71.0	1.1	15.4	4.2	3.9	2.3	0.3	0.9	71.9	1.1	27.0	0.077	0.504	26.915833	-105.766556
T. Der. Guacho chic	35.00	1	0	862	0.1	63.6	1.4	18.3	7.0	4.8	3.7	0.1	1.0	63.7	1.4	34.9	0.085	0.517	26.815968	-106.014985
T. Der. Guacho chic	35.00	3	0	890	1.6	61.1	2.3	16.0	8.9	6.3	2.7	0.1	1.0	62.7	2.3	35.0	0.091	0.507	26.807978	-106.016768
Lim. Edos. Term. Chih. Ppia. Dgo	38.00																			
Lim. Edos. Term. Dgo. Ppia. Chih.	57.00																			
El Vergel	110.00	1	0	1003	0.1	57.4	1.5	21.7	9.9	6.0	2.4	0.0	1.0	57.5	1.5	41.0	0.086	0.504	26.497589	-106.363243
Puerto Sabinas	212.00	1	0	558	0.4	67.8	0.7	15.4	8.9	3.7	1.9	0.1	1.1	68.2	0.7	31.1	0.091	0.504	26.068611	-106.778778
Guadalupe y Calvo	234.00																			

11 CARR: Hidalgo del Parral - Jiménez

CLAVE: 08444

RUTA: MEX-045

AÑO: 2016

LUGAR	ESTACION				CLASIFICACION VEHICULAR EN PORCIENTO										COORDENADAS					
	KM	TE	SC	TDPA	M	A	B	C2	C3	T3S2	T3S3	T3S2R4	OTROS	A	B	C	K'	D	LATITUD	LONGITUD
Hidalgo del Parral	0.00	3	1	3925	1.1	76.6	1.7	9.9	2.6	2.9	3.8	1.2	0.2	77.7	1.7	20.6	0.085	0.527	26.934669	-105.632911
Hidalgo del Parral	0.00	3	2	3521	2.1	73.5	1.9	11.1	2.9	3.0	4.2	1.1	0.2	75.6	1.9	22.5	0.080	0.527	26.934706	-105.632934
Jiménez	76.63	1	1	2769	3.4	62.8	2.1	24.0	0.9	2.9	2.4	1.2	0.3	66.2	2.1	31.7	0.091	0.503	27.142609	-104.936284
Jiménez	76.63	1	2	2736	1.9	59.9	2.2	27.1	1.1	3.4	2.7	1.3	0.4	61.8	2.2	36.0	0.089	0.503	27.142741	-104.936355

12 CARR: Janos - Agua Prieta

CLAVE: 00220

RUTA: MEX-002

AÑO: 2016

LUGAR	ESTACION				CLASIFICACION VEHICULAR EN PORCIENTO										COORDENADAS					
	KM	TE	SC	TDPA	M	A	B	C2	C3	T3S2	T3S3	T3S2R4	OTROS	A	B	C	K'	D	LATITUD	LONGITUD
T. C. Cd. Juárez - Janos	0.00	3	0	4020	0.6	55.9	2.6	15.1	1.5	15.8	3.4	4.1	1.0	56.5	2.6	40.9	0.073	0.504	30.889769	-108.207917
Los Mimbres	56.00	3	0	1956	0.9	40.5	3.8	7.2	2.3	30.5	6.5	7.1	1.2	41.4	3.8	54.8	0.073	0.501	31.243687	-108.579612
Lim. Edos. Term. Chih. Ppia. Son.	78.00																			

CHIHUAHUA

12 CARR: Janos - Agua Prieta

CLAVE: 00220

RUTA: MEX-002

AÑO: 2016

LUGAR	ESTACION				CLASIFICACION VEHICULAR EN PORCIENTO														COORDENADAS	
	KM	TE	SC	TDPA	M	A	B	C2	C3	T3S2	T3S3	T3S2R4	OTROS	A	B	C	K'	D	LATITUD	LONGITUD
Agua Prieta	160.00	1	0	2704	0.7	54.8	3.4	5.5	1.8	22.2	4.3	6.2	1.1	55.5	3.4	41.1	0.068	0.500	31.321015	-109.510800

13 CARR: Jerónimo - Sta. Teresa

CLAVE: 08043

RUTA: MEX-002

AÑO: 2016

LUGAR	ESTACION				CLASIFICACION VEHICULAR EN PORCIENTO														COORDENADAS	
	KM	TE	SC	TDPA	M	A	B	C2	C3	T3S2	T3S3	T3S2R4	OTROS	A	B	C	K'	D	LATITUD	LONGITUD
X. C. Cd. Juárez - Janos	0.00	3	0	2568	0.8	67.1	4.0	15.1	2.9	9.2	0.4	0.1	0.4	67.9	4.0	28.1	0.102	0.546	31.613063	-106.684583
El Mirador	20.00																			

14 CARR: La Junta - Yécora

CLAVE: 00065

RUTA: MEX-016

AÑO: 2016

LUGAR	ESTACION				CLASIFICACION VEHICULAR EN PORCIENTO														COORDENADAS	
	KM	TE	SC	TDPA	M	A	B	C2	C3	T3S2	T3S3	T3S2R4	OTROS	A	B	C	K'	D	LATITUD	LONGITUD
T. C. Chihuahua - Madera	0.00	3	0	4855	0.5	76.7	1.5	15.0	1.0	3.8	1.0	0.1	0.4	77.2	1.5	21.3	0.090	0.504	28.474268	-107.317491
T. Izq. San Juanito	16.00	1	0	2632	0.4	73.7	1.5	17.4	1.5	3.5	1.4	0.2	0.4	74.1	1.5	24.4	0.126	0.500	28.387843	-107.438954
T. Izq. San Juanito	16.00	3	0	1410	0.3	75.7	1.5	15.6	1.2	3.9	1.1	0.2	0.5	76.0	1.5	22.5	0.154	0.504	28.388608	-107.448664
Tomochi	70.00	3	0	1506	1.0	64.0	1.5	25.0	2.3	4.3	1.4	0.3	0.2	65.0	1.5	33.5	0.089	0.501	28.352647	-107.852667
Lim. Edos. Term. Chih. Ppia. Son.	190.00																			
Yécora	253.00	1	0	381	1.1	66.4	2.4	17.6	4.8	5.0	2.5	0.0	0.2	67.5	2.4	30.1	0.129	0.519	28.368469	-108.917488

15 CARR: Libramiento de Delicias - Meoqui

CLAVE: 08813

RUTA: MEX-045

AÑO: 2016

LUGAR	ESTACION				CLASIFICACION VEHICULAR EN PORCIENTO														COORDENADAS	
	KM	TE	SC	TDPA	M	A	B	C2	C3	T3S2	T3S3	T3S2R4	OTROS	A	B	C	K'	D	LATITUD	LONGITUD
T. C. Jiménez - Chihuahua	0.00	3	1	11420	1.1	77.1	2.5	6.5	1.7	7.0	1.7	1.4	1.0	78.2	2.5	19.3	0.081	0.517	28.188760	-105.452136
T. C. Jiménez - Chihuahua	0.00	3	2	10684	1.7	74.2	2.6	7.5	1.8	7.6	1.9	1.6	1.1	75.9	2.6	21.5	0.070	0.517	28.188759	-105.452142
T. C. Jiménez - Chihuahua	13.60	1	1	8744	0.5	74.1	3.7	7.2	2.1	7.9	1.8	1.9	0.8	74.6	3.7	21.7	0.087	0.541	28.290194	-105.487981
T. C. Jiménez - Chihuahua	13.60	1	2	7426	3.8	68.0	4.1	8.1	2.3	8.9	1.9	2.0	0.9	71.8	4.1	24.1	0.077	0.541	28.290195	-105.487984

16 CARR: Porvenir - Cd. Juárez

CLAVE: 08169

RUTA: MEX-002

AÑO: 2016

LUGAR	ESTACION				CLASIFICACION VEHICULAR EN PORCIENTO														COORDENADAS	
	KM	TE	SC	TDPA	M	A	B	C2	C3	T3S2	T3S3	T3S2R4	OTROS	A	B	C	K'	D	LATITUD	LONGITUD
Porvenir	0.00																			

CHIHUAHUA

16 CARR: Porvenir - Cd. Juárez

CLAVE: 08169

RUTA: MEX-002

AÑO: 2016

LUGAR	ESTACION				CLASIFICACION VEHICULAR EN PORCIENTO										COORDENADAS					
	KM	TE	SC	TDPA	M	A	B	C2	C3	T3S2	T3S3	T3S2R4	OTROS	A	B	C	K'	D	LATITUD	LONGITUD
T. Der. Puente Porvenir	1.67	3	0	1190	0.2	80.7	5.2	13.1	0.1	0.3	0.1	0.0	0.3	80.9	5.2	13.9	0.103	0.503	31.256182	-105.879589
Guadalupe	30.54	1	0	2269	0.4	75.5	6.4	15.3	0.3	1.7	0.3	0.0	0.1	75.9	6.4	17.7	0.080	0.512	31.387383	-106.093416
San Isidro	55.93	1	0	4246	0.7	82.1	3.0	10.3	0.9	2.3	0.4	0.1	0.2	82.8	3.0	14.2	0.077	0.541	31.542244	-106.273538
Zaragoza	70.32	1	1	15748	1.0	86.4	3.2	3.2	1.5	1.9	2.1	0.3	0.4	87.4	3.2	9.4	0.072	0.519	31.641670	-106.343062
Zaragoza	70.32	1	2	14588	1.5	85.2	3.2	3.5	1.7	1.9	2.3	0.3	0.4	86.7	3.2	10.1	0.076	0.519	31.641670	-106.343060
Cd. Juárez	81.43																			

17 CARR: Ramal a Aeropuerto de Chihuahua

CLAVE: 08421

RUTA: MEX-016

AÑO: 2016

LUGAR	ESTACION				CLASIFICACION VEHICULAR EN PORCIENTO										COORDENADAS					
	KM	TE	SC	TDPA	M	A	B	C2	C3	T3S2	T3S3	T3S2R4	OTROS	A	B	C	K'	D	LATITUD	LONGITUD
T. C. Chihuahua - Ojinaga	0.00	3	1	6414	1.7	91.9	1.1	1.5	2.1	1.0	0.5	0.2	0.0	93.6	1.1	5.3	0.090	0.510	28.679655	-105.993870
T. C. Chihuahua - Ojinaga	0.00	3	2	6164	1.7	91.2	1.2	1.5	2.5	1.1	0.6	0.2	0.0	92.9	1.2	5.9	0.087	0.510	28.679646	-105.993842
Aeropuerto	5.00																			

18 CARR: Ramal a Palomas

CLAVE: 08019

RUTA: MEX-002

AÑO: 2016

LUGAR	ESTACION				CLASIFICACION VEHICULAR EN PORCIENTO										COORDENADAS					
	KM	TE	SC	TDPA	M	A	B	C2	C3	T3S2	T3S3	T3S2R4	OTROS	A	B	C	K'	D	LATITUD	LONGITUD
T. C. Cd. Juárez - Janos	0.00	3	0	1506	0.3	86.6	0.8	6.6	0.8	4.2	0.4	0.1	0.2	86.9	0.8	12.3	0.104	0.512	31.471090	-107.612549
T. Izq. Guadalupe Victoria	7.50	3	0	1282	0.0	76.7	3.5	9.6	1.6	8.3	0.1	0.0	0.2	76.7	3.5	19.8	0.100	0.514	31.518887	-107.613244
Palomas	34.10																			

19 CARR: Villa Ahumada - Cd. Juárez (Libre)

CLAVE: 08420

RUTA: MEX-045

AÑO: 2016

LUGAR	ESTACION				CLASIFICACION VEHICULAR EN PORCIENTO										COORDENADAS					
	KM	TE	SC	TDPA	M	A	B	C2	C3	T3S2	T3S3	T3S2R4	OTROS	A	B	C	K'	D	LATITUD	LONGITUD
Villa Ahumada	83.63	3	1	4011	0.7	70.4	4.2	7.9	1.3	12.2	1.8	1.3	0.2	71.1	4.2	24.7	0.090	0.514	30.634897	-106.514531
Villa Ahumada	83.63	3	2	4248	0.7	66.3	4.5	9.2	1.4	14.0	2.1	1.4	0.4	67.0	4.5	28.5	0.110	0.514	30.634900	-106.514532
Samalayuca	167.65	3	1	4992	0.8	68.9	4.4	10.4	1.3	10.9	1.5	1.4	0.4	69.7	4.4	25.9	0.082	0.541	31.372245	-106.467000
Samalayuca	167.65	3	2	4912	0.7	65.2	5.0	11.7	1.4	12.6	1.5	1.5	0.4	65.9	5.0	29.1	0.104	0.541	31.372245	-106.467000
T. Izq. Janos	197.92	1	1	7824	0.7	75.2	3.0	8.9	2.3	7.2	1.1	0.8	0.8	75.9	3.0	21.1	0.120	0.505	31.600575	-106.454891
T. Izq. Janos	197.92	1	2	7656	0.9	70.8	3.6	10.6	2.5	8.6	1.2	0.9	0.9	71.7	3.6	24.7	0.084	0.505	31.600574	-106.454887
T. Der. Antiguo Aeropuerto	201.35	1	1	23090	0.9	84.8	2.1	7.8	0.7	1.6	1.4	0.2	0.5	85.7	2.1	12.2	0.066	0.531	31.635473	-106.438834

CHIHUAHUA

19 CARR: Villa Ahumada - Cd. Juárez (Libre)

CLAVE: 08420

RUTA: MEX-045

AÑO: 2016

LUGAR	ESTACION				CLASIFICACION VEHICULAR EN PORCIENTO														COORDENADAS	
	KM	TE	SC	TDPA	M	A	B	C2	C3	T3S2	T3S3	T3S2R4	OTROS	A	B	C	K'	D	LATITUD	LONGITUD
T. Der. Antiguo Aeropuerto	201.35	1	2	20371	0.7	83.7	2.5	8.5	0.7	1.6	1.6	0.2	0.5	84.4	2.5	13.1	0.066	0.531	31.635472	-106.438831
Cd. Juárez	219.00																			

20 CARR: Camargo - Delicias (Cuota)

CLAVE: 08418

RUTA: MEX-045D

AÑO: 2016

LUGAR	ESTACION				CLASIFICACION VEHICULAR EN PORCIENTO														COORDENADAS	
	KM	TE	SC	TDPA	M	A	B	C2	C3	T3S2	T3S3	T3S2R4	OTROS	A	B	C	K'	D	LATITUD	LONGITUD
Camargo	68.98																			
Caseta de Cobro Altavista	73.00	2	1	2588	0.0	55.8	5.6	5.3	3.6	19.9	2.4	5.9	1.5	55.8	5.6	38.6	0.088	0.500	27.730837	-105.197891
Caseta de Cobro Altavista	73.00	2	2	2588	0.0	55.8	5.6	5.3	3.6	19.9	2.4	5.9	1.5	55.8	5.6	38.6	0.088	0.500	27.730837	-105.197891
Saucillo	111.50	3	1	3636	0.4	58.7	5.1	8.2	1.7	17.7	3.0	4.2	1.0	59.1	5.1	35.8	0.086	0.502	28.036066	-105.325061
Saucillo	111.50	3	2	3666	0.5	55.7	5.4	9.7	1.8	18.1	3.1	4.6	1.1	56.2	5.4	38.4	0.080	0.502	28.036069	-105.325005
Caseta de Cobro Saucillo	116.30	2	1	3597	0.0	57.7	4.5	5.7	3.3	20.0	2.6	4.7	1.5	57.7	4.5	37.8	0.088	0.500	28.046373	-105.329353
Caseta de Cobro Saucillo	116.30	2	2	3597	0.0	57.7	4.5	5.7	3.3	20.0	2.6	4.7	1.5	57.7	4.5	37.8	0.088	0.500	28.046373	-105.329353
Delicias	138.00	1	1	8824	1.1	72.4	2.7	8.9	2.2	8.0	2.0	1.9	0.8	73.5	2.7	23.8	0.075	0.504	28.178832	-105.446263
Delicias	138.00	1	2	8687	0.9	70.3	3.1	9.3	2.3	9.0	2.1	2.1	0.9	71.2	3.1	25.7	0.069	0.504	28.178834	-105.446247

21 CARR: Chihuahua - Sacramento (Cuota)

CLAVE: 08015

RUTA: MEX-045D

AÑO: 2016

LUGAR	ESTACION				CLASIFICACION VEHICULAR EN PORCIENTO														COORDENADAS	
	KM	TE	SC	TDPA	M	A	B	C2	C3	T3S2	T3S3	T3S2R4	OTROS	A	B	C	K'	D	LATITUD	LONGITUD
T. C. Chihuahua - El Sueco	18.12	3	1	7331	1.6	71.4	4.7	9.3	1.8	7.5	1.2	1.6	0.9	73.0	4.7	22.3	0.088	0.543	28.771506	-106.171154
T. C. Chihuahua - El Sueco	18.12	3	2	6161	1.2	68.4	5.2	10.7	2.2	8.2	1.2	1.9	1.0	69.6	5.2	25.2	0.067	0.543	28.771516	-106.171165
Francisco Villa	20.00	3	1	4127	0.9	70.3	4.6	10.4	1.8	7.6	1.8	1.7	0.9	71.2	4.6	24.2	0.076	0.549	28.786122	-106.174072
Francisco Villa	20.00	3	2	4269	1.4	67.3	4.7	11.7	2.0	8.1	2.0	1.8	1.0	68.7	4.7	26.6	0.149	0.549	28.786113	-106.174070
T. C. (Chihuahua - El Sueco)	31.30																			

22 CARR: El Sueco - Villa Ahumada (Cuota)

CLAVE: 08420

RUTA: MEX-045D

AÑO: 2016

LUGAR	ESTACION				CLASIFICACION VEHICULAR EN PORCIENTO														COORDENADAS	
	KM	TE	SC	TDPA	M	A	B	C2	C3	T3S2	T3S3	T3S2R4	OTROS	A	B	C	K'	D	LATITUD	LONGITUD
Ent. El Sueco	0.00	3	1	2729	0.8	60.4	6.6	8.2	2.2	16.2	2.2	2.5	0.9	61.2	6.6	32.2	0.085	0.540	29.894880	-106.395505
Ent. El Sueco	0.00	3	2	3206	1.6	53.9	6.4	9.6	2.6	19.7	2.3	2.9	1.0	55.5	6.4	38.1	0.086	0.540	29.894883	-106.395505
Caseta de Cobro Villa Ahumada	82.00	2	1	2838	0.0	67.6	5.6	3.3	2.4	17.7	0.7	1.9	0.8	67.6	5.6	26.8	0.103	0.500	30.437092	-106.521812

CHIHUAHUA

22 CARR: El Sueco - Villa Ahumada (Cuota)

CLAVE: 08420

RUTA: MEX-045D

AÑO: 2016

LUGAR	ESTACION				CLASIFICACION VEHICULAR EN PORCIENTO														COORDENADAS	
	KM	TE	SC	TDPA	M	A	B	C2	C3	T3S2	T3S3	T3S2R4	OTROS	A	B	C	K'	D	LATITUD	LONGITUD
Caseta de Cobro Villa Ahumada	82.00	2	2	2838	0.0	67.6	5.6	3.3	2.4	17.7	0.7	1.9	0.8	67.6	5.6	26.8	0.103	0.500	30.437092	-106.521812
Villa Ahumada	83.63																			

23 CARR: Gómez Palacio - Corralitos (Cuota)

CLAVE: 00016

RUTA: MEX-049D

AÑO: 2016

LUGAR	ESTACION				CLASIFICACION VEHICULAR EN PORCIENTO														COORDENADAS	
	KM	TE	SC	TDPA	M	A	B	C2	C3	T3S2	T3S3	T3S2R4	OTROS	A	B	C	K'	D	LATITUD	LONGITUD
T. C. Gómez Palacio - Jiménez (Libre)	0.00																			
Caseta de Cobro Bermejillo	5.00	2	1	1698	0.2	41.5	7.6	7.3	1.8	24.6	5.3	9.7	2.0	41.7	7.6	50.7	0.079	0.500	25.923655	-103.622040
Caseta de Cobro Bermejillo	5.00	2	2	1698	0.2	41.5	7.6	7.3	1.8	24.6	5.3	9.7	2.0	41.7	7.6	50.7	0.079	0.500	25.923655	-103.622040
T. Izq. Bermejillo	38.20	1	1	1740	0.6	44.0	8.4	6.6	2.3	22.5	5.3	9.0	1.3	44.6	8.4	47.0	0.070	0.505	25.883254	-103.610758
T. Izq. Bermejillo	38.20	1	2	1771	0.6	37.2	9.0	7.4	2.5	25.8	6.1	10.1	1.3	37.8	9.0	53.2	0.065	0.505	25.883267	-103.610788
T. Izq. Bermejillo	38.20	3	1	1665	2.5	41.0	8.9	8.1	2.4	22.0	5.4	8.4	1.3	43.5	8.9	47.6	0.067	0.504	25.895335	-103.611236
T. Izq. Bermejillo	38.20	3	2	1638	0.7	41.3	8.4	8.4	2.3	23.6	6.0	8.1	1.2	42.0	8.4	49.6	0.073	0.504	25.895336	-103.611245
Caseta de Cobro Ceballos	89.00	2	1	1683	0.2	40.4	7.6	7.5	1.8	25.3	5.4	9.8	2.0	40.6	7.6	51.8	0.079	0.500	26.586790	-104.057602
Caseta de Cobro Ceballos	89.00	2	2	1683	0.2	40.4	7.6	7.5	1.8	25.3	5.4	9.8	2.0	40.6	7.6	51.8	0.079	0.500	26.586790	-104.057602
Lim. Edos. Term. Dgo. Ppia. Chih.	112.00																			
T. C. Gómez Palacio - Jiménez (Libre)	194.00	1	1	1704	0.5	41.9	8.7	8.7	2.3	23.5	5.2	7.9	1.3	42.4	8.7	48.9	0.086	0.537	27.088056	-104.849500
T. C. Gómez Palacio - Jiménez (Libre)	194.00	1	2	1979	1.0	37.1	9.3	8.8	2.4	25.7	5.7	8.5	1.5	38.1	9.3	52.6	0.070	0.537	27.087783	-104.849694

24 CARR: Jiménez - Camargo (Cuota)

CLAVE: 08418

RUTA: MEX-045D

AÑO: 2016

LUGAR	ESTACION				CLASIFICACION VEHICULAR EN PORCIENTO														COORDENADAS	
	KM	TE	SC	TDPA	M	A	B	C2	C3	T3S2	T3S3	T3S2R4	OTROS	A	B	C	K'	D	LATITUD	LONGITUD
Jiménez	0.00	3	1	3238	0.7	51.1	4.6	9.2	2.3	21.3	3.6	5.7	1.5	51.8	4.6	43.6	0.072	0.505	27.153381	-104.930281
Jiménez	0.00	3	2	3178	1.1	47.5	4.9	10.2	2.6	22.2	3.9	6.0	1.6	48.6	4.9	46.5	0.064	0.505	27.153381	-104.930281
Caseta de Cobro Camargo	11.00	2	1	2286	0.0	42.6	6.3	5.0	4.2	29.9	3.3	6.7	2.0	42.6	6.3	51.1	0.085	0.500	27.244999	-104.933228
Caseta de Cobro Camargo	11.00	2	2	2286	0.0	42.6	6.3	5.0	4.2	29.9	3.3	6.7	2.0	42.6	6.3	51.1	0.085	0.500	27.244999	-104.933228
Camargo	68.98	1	1	3317	0.8	54.3	4.2	7.3	2.9	19.2	3.6	6.0	1.7	55.1	4.2	40.7	0.068	0.512	27.654554	-105.148035
Camargo	68.98	1	2	3480	0.7	50.0	4.8	8.0	2.9	21.3	4.1	6.4	1.8	50.7	4.8	44.5	0.061	0.512	27.654516	-105.148161

CHIHUAHUA

25 CARR: Libramiento Oriente Chihuahua (Cuota)

CLAVE:

RUTA: MEX-045D

AÑO: 2016

LUGAR	ESTACION				CLASIFICACION VEHICULAR EN PORCIENTO													COORDENADAS		
	KM	TE	SC	TDPA	M	A	B	C2	C3	T3S2	T3S3	T3S2R4	OTROS	A	B	C	K'	D	LATITUD	LONGITUD
T. C. Delicias - Chihuahua	0.00	3	0	2526	3.7	52.0	0.5	13.2	3.7	15.3	3.7	6.8	1.1	55.7	0.5	43.8	0.081	0.509	28.584528	-105.952354
T. C. Chihuahua - Ojinaga	22.00	1	0	2992	1.0	56.5	4.2	9.8	1.7	16.7	3.1	5.8	1.2	57.5	4.2	38.3	0.089	0.511	28.736718	-105.980500
T. C. Chihuahua - Ojinaga	22.00	3	0	3091	0.8	66.2	0.7	2.5	3.8	16.2	3.1	5.6	1.1	67.0	0.7	32.3	0.096	0.504	28.742270	-105.992530
T. C. Chihuahua - Sacramento (Cuota)	42.20																			

26 CARR: Ahumada - Ricardo Flores Magón

CLAVE: 08804

RUTA: CHIH

AÑO: 2016

LUGAR	ESTACION				CLASIFICACION VEHICULAR EN PORCIENTO													COORDENADAS		
	KM	TE	SC	TDPA	M	A	B	C2	C3	T3S2	T3S3	T3S2R4	OTROS	A	B	C	K'	D	LATITUD	LONGITUD
Ahumada	0.00	3	0	1833	0.4	69.0	0.9	15.5	1.8	8.7	2.4	0.6	0.7	69.4	0.9	29.7	0.098	0.502	30.615655	-106.523451
Ricardo Flores Magón	96.00	1	0	2122	0.1	67.0	1.5	15.5	2.0	10.8	2.2	0.7	0.2	67.1	1.5	31.4	0.085	0.519	29.958356	-106.951993

27 CARR: Cuauhtémoc - Buenaventura

CLAVE: 08015

RUTA: CHIH

AÑO: 2016

LUGAR	ESTACION				CLASIFICACION VEHICULAR EN PORCIENTO													COORDENADAS		
	KM	TE	SC	TDPA	M	A	B	C2	C3	T3S2	T3S3	T3S2R4	OTROS	A	B	C	K'	D	LATITUD	LONGITUD
T. C. Chihuahua - Madera	0.00	3	1	8886	0.7	83.1	0.3	9.9	0.4	1.8	2.6	0.4	0.8	83.8	0.3	15.9	0.084	0.505	28.405098	-106.895790
T. C. Chihuahua - Madera	0.00	3	2	9080	1.5	80.2	0.3	11.5	0.4	2.0	2.9	0.4	0.8	81.7	0.3	18.0	0.092	0.505	28.405097	-106.895767
Álvaro Obregón	42.00	3	1	3971	0.4	76.2	1.1	15.5	1.4	3.2	1.3	0.4	0.5	76.6	1.1	22.3	0.087	0.506	28.752600	-106.917333
Álvaro Obregón	42.00	3	2	4061	0.9	72.9	1.3	17.7	1.5	3.4	1.5	0.3	0.5	73.8	1.3	24.9	0.083	0.506	28.752658	-106.917334
Bachiniva	77.50	1	0	3416	0.9	76.6	0.9	15.7	1.0	3.3	1.2	0.1	0.3	77.5	0.9	21.6	0.087	0.504	28.775327	-107.247398
T. Der. Namiquipa	112.06	3	0	4012	0.3	86.3	0.6	7.5	1.2	2.9	0.9	0.1	0.2	86.6	0.6	12.8	0.090	0.502	29.029431	-107.455232
T. Izq. Madera	150.50	3	0	1224	0.2	87.9	1.2	4.4	1.4	2.5	2.1	0.1	0.2	88.1	1.2	10.7	0.113	0.504	29.264875	-107.707742
Buenaventura	253.30	1	0	857	1.2	70.3	2.3	20.0	1.1	3.6	1.4	0.1	0.0	71.5	2.3	26.2	0.158	0.501	29.841657	-107.478858

28 CARR: Delicias - Saucillo

CLAVE: 08007

RUTA: CHIH-007

AÑO: 2016

LUGAR	ESTACION				CLASIFICACION VEHICULAR EN PORCIENTO													COORDENADAS		
	KM	TE	SC	TDPA	M	A	B	C2	C3	T3S2	T3S3	T3S2R4	OTROS	A	B	C	K'	D	LATITUD	LONGITUD
Delicias	0.00	3	0	4120	6.7	77.2	2.8	8.6	1.5	1.4	1.0	0.3	0.5	83.9	2.8	13.3	0.092	0.515	28.195000	-105.425716
Las Varas	17.00	1	0	2000	6.1	72.4	0.9	16.8	0.7	2.2	0.4	0.4	0.1	78.5	0.9	20.6	0.093	0.517	28.164333	-105.341056
Saucillo	33.00	1	0	5593	3.1	78.4	1.0	8.8	0.9	5.7	0.9	0.2	1.0	81.5	1.0	17.5	0.072	0.511	28.046500	-105.300000

CHIHUAHUA

29 CARR: Ent. Peña Blanca - Ent. La Concha

CLAVE: 08493

RUTA: CHIH

AÑO: 2016

LUGAR	ESTACION				CLASIFICACION VEHICULAR EN PORCIENTO													COORDENADAS		
	KM	TE	SC	TDPA	M	A	B	C2	C3	T3S2	T3S3	T3S2R4	OTROS	A	B	C	K'	D	LATITUD	LONGITUD
T. C. Cuauhtémoc - Buenaventura	0.00	3	0	975	0.3	76.7	1.6	14.1	0.8	3.8	1.5	0.9	0.3	77.0	1.6	21.4	0.095	0.506	29.263439	-107.708388
T. C. Chihuahua - Madera	17.00	1	0	470	0.3	79.3	0.4	12.0	0.9	4.2	2.7	0.1	0.1	79.6	0.4	20.0	0.096	0.502	29.122054	-107.905934

30 CARR: Ent. Puerto Justo - Ent. Guacho chic

CLAVE: 08044

RUTA: CHIH

AÑO: 2016

LUGAR	ESTACION				CLASIFICACION VEHICULAR EN PORCIENTO													COORDENADAS		
	KM	TE	SC	TDPA	M	A	B	C2	C3	T3S2	T3S3	T3S2R4	OTROS	A	B	C	K'	D	LATITUD	LONGITUD
T. C. Hidalgo del Parral - Pto. Sabin al Guacho chic	0.00 130.00	3	0	156	1.3	80.1	0.9	17.5	0.0	0.2	0.0	0.0	0.0	81.4	0.9	17.7	0.128	0.516	26.813695	-106.017224

31 CARR: Jiménez - Camargo

CLAVE: 08021

RUTA: CHIH-049

AÑO: 2016

LUGAR	ESTACION				CLASIFICACION VEHICULAR EN PORCIENTO													COORDENADAS		
	KM	TE	SC	TDPA	M	A	B	C2	C3	T3S2	T3S3	T3S2R4	OTROS	A	B	C	K'	D	LATITUD	LONGITUD
Jiménez	0.00	3	0	3113	3.0	67.3	1.1	14.3	2.1	8.8	1.9	0.8	0.7	70.3	1.1	28.6	0.082	0.502	27.150311	-104.895121
T. Der. Ojinaga	65.80	3	0	2362	0.5	64.4	1.6	18.5	2.3	9.1	2.3	0.7	0.6	64.9	1.6	33.5	0.090	0.504	27.648465	-105.078390
T. C. Jiménez - Chihuahua (Cuota)	78.20	1	0	2523	0.5	64.3	1.6	18.0	2.2	10.0	2.2	0.6	0.6	64.8	1.6	33.6	0.073	0.505	27.677333	-105.143528

32 CARR: Lázaro Cárdenas - Ent. Colonia San José

CLAVE: 08004

RUTA: CHIH-004

AÑO: 2016

LUGAR	ESTACION				CLASIFICACION VEHICULAR EN PORCIENTO													COORDENADAS		
	KM	TE	SC	TDPA	M	A	B	C2	C3	T3S2	T3S3	T3S2R4	OTROS	A	B	C	K'	D	LATITUD	LONGITUD
T. C. Jiménez - Chihuahua	0.00	3	1	2921	2.9	90.4	1.2	2.7	0.8	0.7	0.8	0.3	0.2	93.3	1.2	5.5	0.088	0.538	28.388486	-105.626923
T. C. Jiménez - Chihuahua	0.00	3	2	3400	3.7	89.1	1.4	2.8	0.9	0.7	0.9	0.4	0.1	92.8	1.4	5.8	0.091	0.538	28.388488	-105.626925
T. C. Meoqui - Julimes	16.00	1	0	1896	1.5	76.6	4.0	14.1	1.5	1.4	0.5	0.1	0.3	78.1	4.0	17.9	0.089	0.540	28.386847	-105.444408

33 CARR: Libramiento de Hidalgo del Parral

CLAVE: 08221

RUTA: CHIH

AÑO: 2016

LUGAR	ESTACION				CLASIFICACION VEHICULAR EN PORCIENTO													COORDENADAS		
	KM	TE	SC	TDPA	M	A	B	C2	C3	T3S2	T3S3	T3S2R4	OTROS	A	B	C	K'	D	LATITUD	LONGITUD
T. C. Hidalgo del Parral - Santa Bárbara	0.00																			
T. C. Ent. La Zarca - Hidalgo del Parral	8.00	3	1	4390	2.0	91.4	1.1	2.1	0.7	1.3	0.9	0.2	0.3	93.4	1.1	5.5	0.063	0.501	26.925547	-105.641715
T. C. Ent. La Zarca - Hidalgo del Parral	8.00	3	2	4364	1.8	90.9	1.2	2.4	0.8	1.5	0.9	0.2	0.3	92.7	1.2	6.1	0.081	0.501	26.925545	-105.641715
T. C. Hidalgo del Parral - Jiménez	10.00																			

CHIHUAHUA

34 CARR: Libramiento de Jiménez

CLAVE: 08047

RUTA: CHIH

AÑO: 2016

LUGAR	ESTACION				CLASIFICACION VEHICULAR EN PORCIENTO													COORDENADAS		
	KM	TE	SC	TDPA	M	A	B	C2	C3	T3S2	T3S3	T3S2R4	OTROS	A	B	C	K'	D	LATITUD	LONGITUD
T. C. Gómez Palacio - Jiménez	0.00	3	1	5629	2.8	65.4	2.4	7.9	1.9	12.1	3.4	3.2	0.9	68.2	2.4	29.4	0.064	0.505	27.133855	-104.909689
T. C. Gómez Palacio - Jiménez	0.00	3	2	5754	2.0	62.4	2.7	8.3	2.0	14.3	4.0	3.4	0.9	64.4	2.7	32.9	0.066	0.505	27.133761	-104.909808
T. C. Jiménez - Chihuahua (Cuota)	3.40	1	1	4278	1.6	54.8	5.0	10.7	1.9	16.1	4.2	4.5	1.2	56.4	5.0	38.6	0.097	0.505	27.141820	-104.923197
T. C. Jiménez - Chihuahua (Cuota)	3.40	1	2	4373	2.0	47.3	6.0	12.6	2.1	18.8	4.4	5.4	1.4	49.3	6.0	44.7	0.067	0.505	27.141764	-104.923222

35 CARR: Meoqui - Julimes

CLAVE: 08005

RUTA: CHIH-005

AÑO: 2016

LUGAR	ESTACION				CLASIFICACION VEHICULAR EN PORCIENTO													COORDENADAS		
	KM	TE	SC	TDPA	M	A	B	C2	C3	T3S2	T3S3	T3S2R4	OTROS	A	B	C	K'	D	LATITUD	LONGITUD
Meoqui	0.00	3	0	5823	2.9	77.4	0.8	13.9	0.6	3.1	0.6	0.1	0.6	80.3	0.8	18.9	0.075	0.518	28.284073	-105.462724
Loreto	8.00	3	0	3942	2.2	81.2	0.8	12.2	1.0	1.8	0.3	0.1	0.4	83.4	0.8	15.8	0.075	0.501	28.320811	-105.434009
Regina	15.40	3	0	3120	2.1	88.1	2.6	5.6	0.9	0.5	0.1	0.0	0.1	90.2	2.6	7.2	0.114	0.512	28.421260	-105.454279
Julimes	23.00	1	0	2953	1.6	82.2	2.8	7.8	2.0	1.3	1.3	0.9	0.1	83.8	2.8	13.4	0.079	0.503	28.427676	-105.444260

36 CARR: Ramal a Creel

CLAVE: 08812

RUTA: CHIH

AÑO: 2016

LUGAR	ESTACION				CLASIFICACION VEHICULAR EN PORCIENTO													COORDENADAS		
	KM	TE	SC	TDPA	M	A	B	C2	C3	T3S2	T3S3	T3S2R4	OTROS	A	B	C	K'	D	LATITUD	LONGITUD
T. C. La Junta - Yepachi	0.00	3	0	1962	0.2	70.6	2.3	18.9	2.6	2.9	1.9	0.2	0.4	70.8	2.3	26.9	0.090	0.505	28.385343	-107.441784
San Juanito	58.00	3	0	1994	0.8	72.8	2.1	18.2	1.7	2.5	1.3	0.2	0.4	73.6	2.1	24.3	0.108	0.507	27.960092	-107.606603
Creel	85.00																			

37 CARR: San Juanito - Ent. Basaseachi

CLAVE: 08045

RUTA: CHIH

AÑO: 2016

LUGAR	ESTACION				CLASIFICACION VEHICULAR EN PORCIENTO													COORDENADAS		
	KM	TE	SC	TDPA	M	A	B	C2	C3	T3S2	T3S3	T3S2R4	OTROS	A	B	C	K'	D	LATITUD	LONGITUD
San Juanito	0.00	3	0	636	0.7	74.1	0.9	20.9	1.2	1.1	0.7	0.4	0.0	74.8	0.9	24.3	0.107	0.506	27.972815	-107.616987
T. C. La Junta - Yécora	84.00	1	0	631	1.3	77.1	1.0	17.3	1.5	0.6	0.8	0.0	0.4	78.4	1.0	20.6	0.105	0.516	28.190244	-108.173243

38 CARR: T. C. (Jiménez - Camargo) - Ojinaga

CLAVE: 08009

RUTA: CHIH-018

AÑO: 2016

LUGAR	ESTACION				CLASIFICACION VEHICULAR EN PORCIENTO													COORDENADAS		
	KM	TE	SC	TDPA	M	A	B	C2	C3	T3S2	T3S3	T3S2R4	OTROS	A	B	C	K'	D	LATITUD	LONGITUD
T. C. Jimenez - Camargo	0.00	3	1	518	0.3	78.1	0.9	11.4	1.3	4.7	1.7	1.4	0.2	78.4	0.9	20.7	0.120	0.518	27.649943	-105.070445

CHIHUAHUA

38 CARR: T. C. (Jiménez - Camargo) - Ojinaga

CLAVE: 08009

RUTA: CHIH-018

AÑO: 2016

LUGAR	ESTACION				CLASIFICACION VEHICULAR EN PORCIENTO														COORDENADAS	
	KM	TE	SC	TDPA	M	A	B	C2	C3	T3S2	T3S3	T3S2R4	OTROS	A	B	C	K'	D	LATITUD	LONGITUD
T. C. Jimenez - Camargo	0.00	3	2	483	0.8	74.8	1.0	13.0	1.4	5.4	2.0	1.5	0.1	75.6	1.0	23.4	0.118	0.518	27.649944	-105.070444
T. Der. La Perla	97.00	3	0	461	0.7	62.8	1.3	15.1	2.2	9.1	4.5	3.4	0.9	63.5	1.3	35.2	0.132	0.501	28.299361	-104.571059
T. Der. Majjoma	174.20	3	0	442	0.1	64.6	1.2	18.2	1.9	7.9	3.8	1.8	0.5	64.7	1.2	34.1	0.138	0.511	28.939708	-104.482345
T. Der. Manuel Benavides	218.00	3	0	1788	0.3	88.2	0.7	6.8	1.2	1.5	0.7	0.4	0.2	88.5	0.7	10.8	0.109	0.517	29.317263	-104.400041
Ojinaga	247.00	1	0	2244	0.5	86.6	1.1	7.6	0.7	2.2	0.6	0.2	0.5	87.1	1.1	11.8	0.137	0.518	29.517209	-104.422595

39 CARR: T. Julimes - La Boquilla

CLAVE: 08009

RUTA: CHIH-018

AÑO: 2016

LUGAR	ESTACION				CLASIFICACION VEHICULAR EN PORCIENTO														COORDENADAS	
	KM	TE	SC	TDPA	M	A	B	C2	C3	T3S2	T3S3	T3S2R4	OTROS	A	B	C	K'	D	LATITUD	LONGITUD
T. C. Meoquí - Julimes	0.00	3	0	1446	3.1	81.4	2.0	10.5	1.2	1.2	0.3	0.0	0.3	84.5	2.0	13.5	0.083	0.500	28.433376	-105.459168
La Boquilla	7.50																			

40 CARR: Ent. El Álamo - Ent. Ricardo Flores Magón (Cuota)

CLAVE: 08046

RUTA: CHIH-D

AÑO: 2016

LUGAR	ESTACION				CLASIFICACION VEHICULAR EN PORCIENTO														COORDENADAS	
	KM	TE	SC	TDPA	M	A	B	C2	C3	T3S2	T3S3	T3S2R4	OTROS	A	B	C	K'	D	LATITUD	LONGITUD
T. C. Chihuahua - El Sueco	0.00	3	0	1889	1.1	47.0	4.4	11.1	2.8	21.3	4.1	6.9	1.3	48.1	4.4	47.5	0.080	0.507	29.479547	-106.404992
T. C. El Sueco - Janos	75.00																			

41 CARR: Ricardo Flores Magón - Galeana (Cuota)

CLAVE: 08019

RUTA: CHIH-D

AÑO: 2016

LUGAR	ESTACION				CLASIFICACION VEHICULAR EN PORCIENTO														COORDENADAS	
	KM	TE	SC	TDPA	M	A	B	C2	C3	T3S2	T3S3	T3S2R4	OTROS	A	B	C	K'	D	LATITUD	LONGITUD
T. C. El Sueco - Janos	0.00	3	0	2517	0.6	40.1	3.9	13.1	2.6	26.5	6.1	6.4	0.7	40.7	3.9	55.4	0.066	0.508	29.967796	-107.065769
Galeana	58.00	1	0	2229	0.4	38.4	4.1	12.9	2.6	27.8	6.6	6.4	0.8	38.8	4.1	57.1	0.096	0.507	30.177132	-107.621099

42 CARR: Samalayuca - San Jerónimo (Cuota)

CLAVE: 08019

RUTA: CHIH-D

AÑO: 2016

LUGAR	ESTACION				CLASIFICACION VEHICULAR EN PORCIENTO														COORDENADAS	
	KM	TE	SC	TDPA	M	A	B	C2	C3	T3S2	T3S3	T3S2R4	OTROS	A	B	C	K'	D	LATITUD	LONGITUD
T. C. El Sueco - Cd. Juárez	0.00	3	0	1073	0.8	80.9	0.5	13.3	1.1	3.0	0.2	0.0	0.2	81.7	0.5	17.8	0.163	0.573	31.452036	-106.472991
San Jerónimo	28.10																			

CHIHUAHUA

43 CARR: T. C. (Chihuahua - Ojinaga) - La Mula (Cuota)

CLAVE: 08170

RUTA: CHIH-D

AÑO: 2016

LUGAR	ESTACION				CLASIFICACION VEHICULAR EN PORCIENTO													COORDENADAS		
	KM	TE	SC	TDPA	M	A	B	C2	C3	T3S2	T3S3	T3S2R4	OTROS	A	B	C	K'	D	LATITUD	LONGITUD
T. C. Chihuahua - Ojinaga	0.00	3	0	1102	0.1	68.7	2.5	20.3	1.9	2.5	2.2	1.0	0.8	68.8	2.5	28.7	0.086	0.503	29.145995	-105.485205
La Mula	110.00	1	0	1186	0.2	65.9	1.8	27.7	1.0	2.0	0.9	0.3	0.2	66.1	1.8	32.1	0.111	0.510	29.181550	-104.470218

44 CARR: Chihuahua - Madera

CLAVE: 08038

RUTA: CHIH-D-MEX-001-CHIH

AÑO: 2016

LUGAR	ESTACION				CLASIFICACION VEHICULAR EN PORCIENTO													COORDENADAS		
	KM	TE	SC	TDPA	M	A	B	C2	C3	T3S2	T3S3	T3S2R4	OTROS	A	B	C	K'	D	LATITUD	LONGITUD
Chihuahua	0.00																			
T. Der. Presa Chihuahua	10.50	1	1	9245	0.4	81.1	1.5	10.3	1.3	2.8	1.6	0.4	0.6	81.5	1.5	17.0	0.084	0.530	28.568435	-106.142823
T. Der. Presa Chihuahua	10.50	1	2	10444	0.5	82.9	1.2	9.1	1.1	2.6	1.6	0.3	0.7	83.4	1.2	15.4	0.128	0.530	28.568444	-106.142830
T. Der. Presa Chihuahua	10.50	3	1	7639	0.4	78.8	1.9	12.2	1.5	3.0	1.4	0.3	0.5	79.2	1.9	18.9	0.108	0.525	28.565290	-106.146626
T. Der. Presa Chihuahua	10.50	3	2	8459	0.4	77.9	2.1	12.5	1.5	3.2	1.6	0.3	0.5	78.3	2.1	19.6	0.155	0.525	28.565303	-106.146637
T. Izq. Hidalgo del Parral (Vía Corta)	36.20	1	1	6358	0.4	74.5	2.4	14.0	1.8	4.0	1.8	0.6	0.5	74.9	2.4	22.7	0.142	0.545	28.364727	-106.257859
T. Izq. Hidalgo del Parral (Vía Corta)	36.20	1	2	5312	0.5	74.9	2.5	11.6	2.2	5.0	1.9	0.6	0.8	75.4	2.5	22.1	0.100	0.545	28.364744	-106.257837
T. Izq. Hidalgo del Parral (Vía Corta)	36.20	3	1	4836	0.2	79.3	1.8	9.9	1.5	4.4	1.8	0.6	0.5	79.5	1.8	18.7	0.109	0.516	28.358428	-106.264761
T. Izq. Hidalgo del Parral (Vía Corta)	36.20	3	2	4528	0.3	79.7	1.6	8.0	1.8	4.9	2.2	0.8	0.7	80.0	1.6	18.4	0.102	0.516	28.358378	-106.264685
Cuauhtémoc	103.50	1	1	4927	0.9	82.3	1.7	11.4	1.0	1.7	0.6	0.2	0.2	83.2	1.7	15.1	0.102	0.509	28.400277	-106.824798
Cuauhtémoc	103.50	1	2	4759	0.8	78.3	2.0	15.1	1.1	1.6	0.7	0.1	0.3	79.1	2.0	18.9	0.102	0.509	28.400275	-106.824797
Cuauhtémoc	103.50	3	1	9655	0.7	85.1	0.4	10.1	0.4	1.3	1.5	0.1	0.4	85.8	0.4	13.8	0.082	0.517	28.401784	-106.888951
Cuauhtémoc	103.50	3	2	10328	0.7	83.9	0.4	11.3	0.4	1.3	1.5	0.1	0.4	84.6	0.4	15.0	0.092	0.517	28.401786	-106.888977
T. Der. Álvaro Obregón	107.10	3	1	6786	0.4	74.8	1.2	18.9	1.3	2.0	1.0	0.1	0.3	75.2	1.2	23.6	0.086	0.507	28.399327	-106.923727
T. Der. Álvaro Obregón	107.10	3	2	6989	0.3	73.1	1.3	20.0	1.5	2.2	1.2	0.1	0.3	73.4	1.3	25.3	0.088	0.507	28.399374	-106.923728
T. Izq. Yepachi	150.80	1	1	3095	0.2	66.0	1.9	27.4	1.3	2.1	0.9	0.1	0.1	66.2	1.9	31.9	0.113	0.582	28.469231	-107.294468
T. Izq. Yepachi	150.80	1	2	3112	0.4	89.3	1.5	5.0	1.1	1.4	0.9	0.1	0.3	89.7	1.5	8.8	0.101	0.582	28.469207	-107.294482
Guerrero	169.80	3	0	2892	0.5	77.6	0.7	16.7	1.5	1.8	0.9	0.1	0.2	78.1	0.7	21.2	0.079	0.501	28.553683	-107.497018
T. Der. Peña Blanca	261.30	1	0	1112	0.4	77.2	1.6	14.6	1.2	2.4	1.8	0.2	0.6	77.6	1.6	20.8	0.085	0.509	29.120115	-107.905827
T. Der. Peña Blanca	261.30	3	0	1183	0.1	83.8	1.8	7.6	1.1	3.3	1.8	0.3	0.2	83.9	1.8	14.3	0.090	0.522	29.120048	-107.907847
Madera	279.00																			

45 CARR: Ent. Agua Caliente - El Terrero

CLAVE: 08170

RUTA: CHIH-MEX

AÑO: 2016

LUGAR	ESTACION				CLASIFICACION VEHICULAR EN PORCIENTO													COORDENADAS		
	KM	TE	SC	TDPA	M	A	B	C2	C3	T3S2	T3S3	T3S2R4	OTROS	A	B	C	K'	D	LATITUD	LONGITUD
T. C. Chihuahua - El Sueco	0.00	3	0	714	0.5	68.5	0.7	22.5	2.2	3.6	1.4	0.5	0.1	69.0	0.7	30.3	0.125	0.501	29.096168	-106.343576

CHIHUAHUA

45 CARR: Ent. Agua Caliente - El Terrero

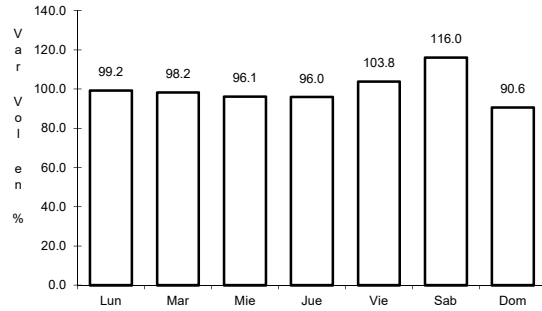
CLAVE: 08170

RUTA: CHIH-MEX

AÑO: 2016

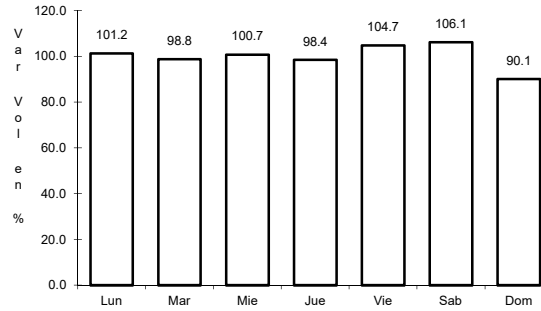
LUGAR	ESTACION				CLASIFICACION VEHICULAR EN PORCIENTO														COORDENADAS	
	KM	TE	SC	TDPA	M	A	B	C2	C3	T3S2	T3S3	T3S2R4	OTROS	A	B	C	K	D	LATITUD	LONGITUD
Nuevas Delicias	22.00	1	0	589	0.6	68.0	0.7	22.7	2.2	3.7	1.5	0.5	0.1	68.6	0.7	30.7	0.153	0.503	29.089015	-106.468961
El Terrero	120.00	1	0	1247	0.6	84.4	0.7	11.4	0.9	1.5	0.5	0.0	0.0	85.0	0.7	14.3	0.099	0.507	29.177096	-107.373308

1 CARR: Cd. Juárez - Janos



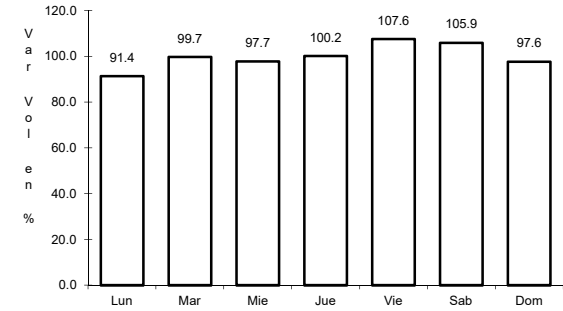
Km: 0.00 Tipo: 3 Sent: 1

CLAVE: 08041



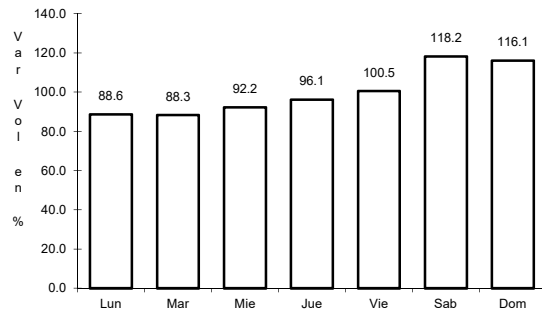
Km: 0.00 Tipo: 3 Sent: 2

RUTA: MEX-002



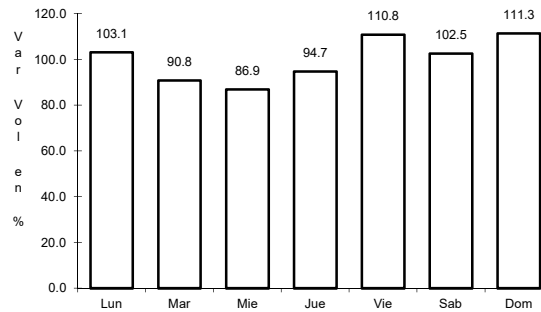
Km: 205.00 Tipo: 1 Sent: 0

2 CARR: Chihuahua - El Sueco



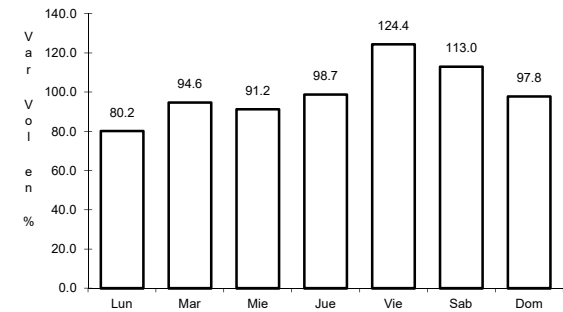
Km: 24.00 Tipo: 1 Sent: 0

CLAVE: 08419



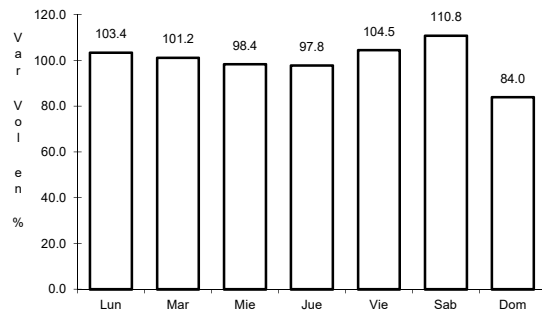
Km: 155.87 Tipo: 1 Sent: 1

RUTA: MEX-045



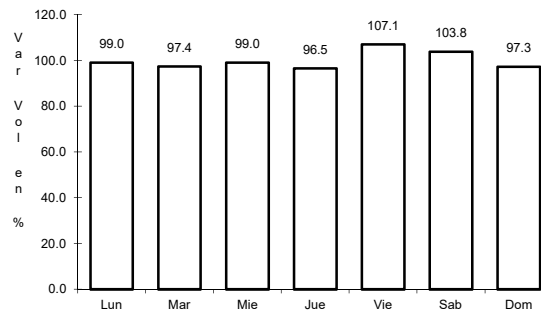
Km: 155.87 Tipo: 1 Sent: 2

3 CARR: Chihuahua - Ojinaga



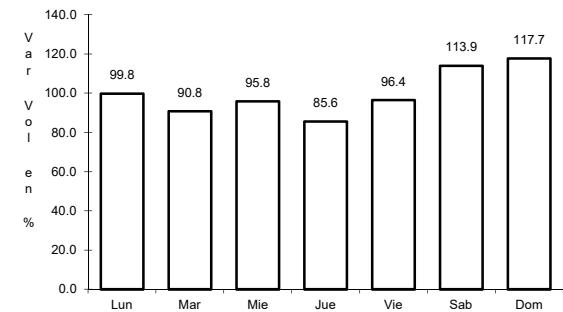
Km: 6.50 Tipo: 1 Sent: 1

CLAVE: 08042



Km: 6.50 Tipo: 1 Sent: 2

RUTA: MEX-016

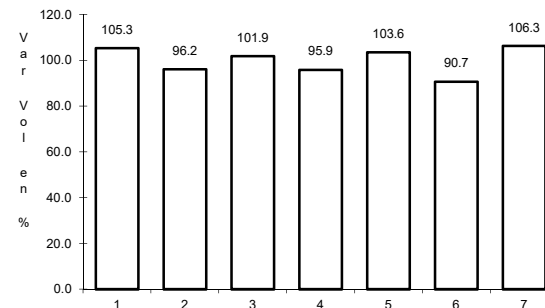
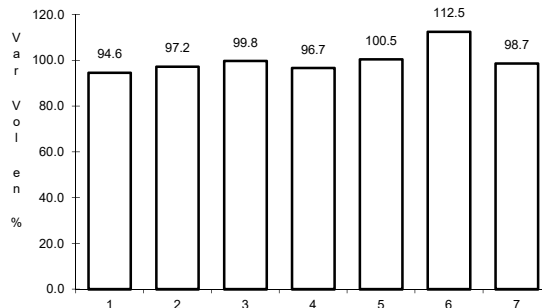
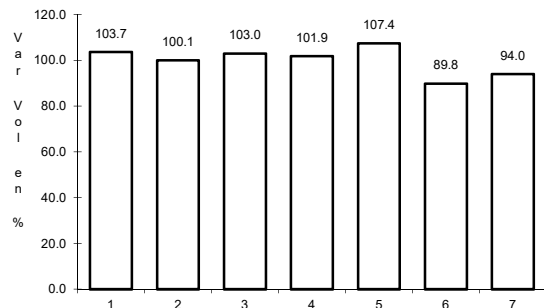


Km: 224.00 Tipo: 1 Sent: 0

4 CARR: Delicias - Chihuahua (Libre)

CLAVE: 08418

RUTA: MEX-045



Km: 166.87

Tipo: 1

Sent: 1

Km: 166.87

Tipo: 1

Sent: 2

Km: 210.00

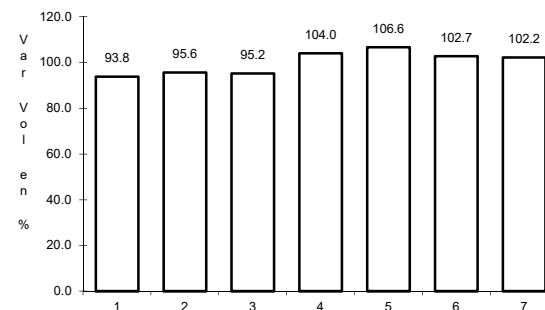
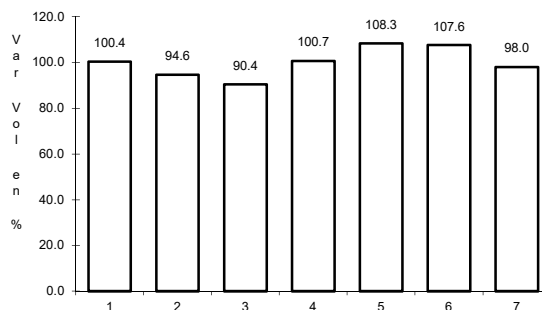
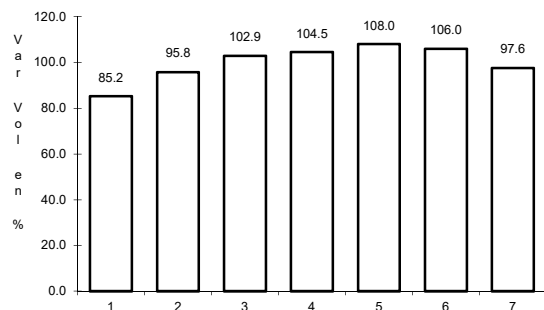
Tipo: 1

Sent: 1

5 CARR: El Sueco - Janos

CLAVE: 08037

RUTA: MEX-010



Km: 0.00

Tipo: 3

Sent: 0

Km: 114.00

Tipo: 1

Sent: 0

Km: 257.00

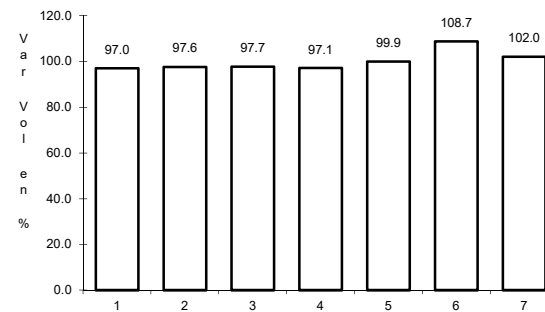
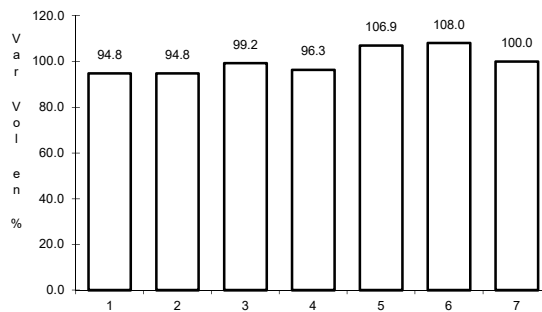
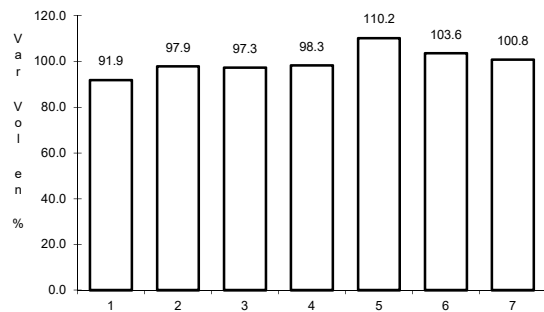
Tipo: 1

Sent: 0

6 CARR: Ent. Ciudad Camargo - Saucillo

CLAVE: 08417

RUTA: MEX-045



Km: 0.00

Tipo: 3

Sent: 0

Km: 20.92

Tipo: 3

Sent: 0

Km: 42.52

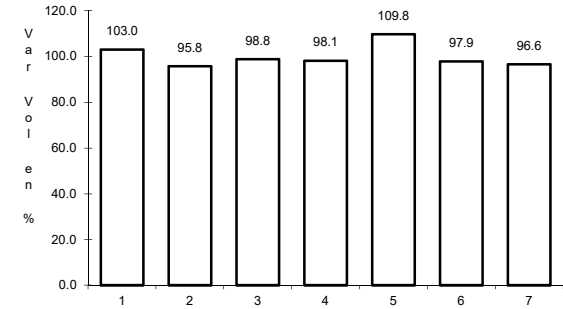
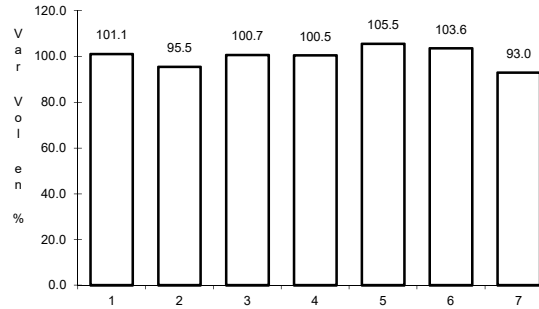
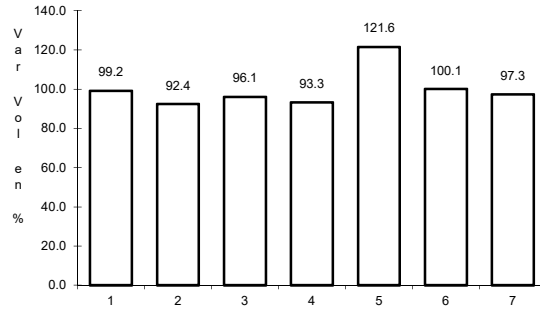
Tipo: 1

Sent: 0

7 CARR: Ent. La Zarca - Hidalgo del Parral

CLAVE: 00488

RUTA: MEX-045



Km: 0.00 Tipo: 3 Sent: 0

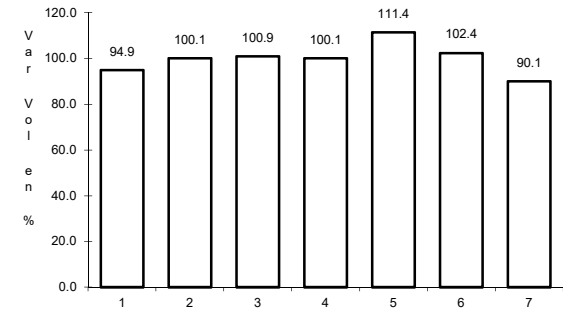
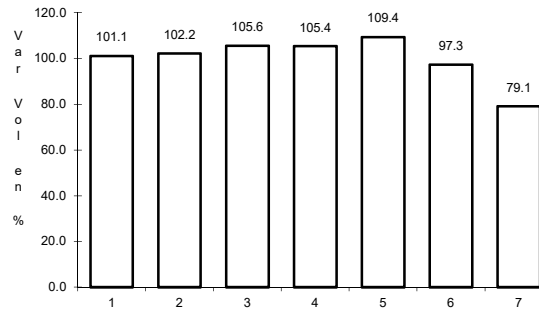
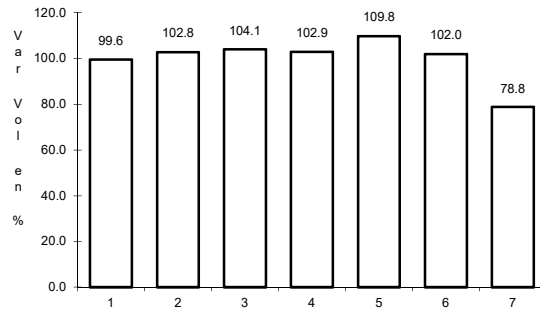
Km: 92.35 Tipo: 3 Sent: 0

Km: 171.00 Tipo: 1 Sent: 0

8 CARR: Gómez Palacio - Jiménez

CLAVE: 00006

RUTA: MEX-049



Km: 0.00 Tipo: 3 Sent: 1

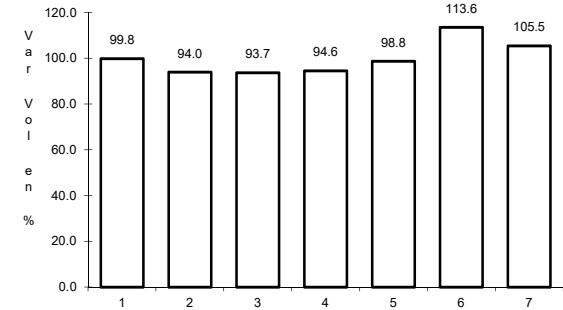
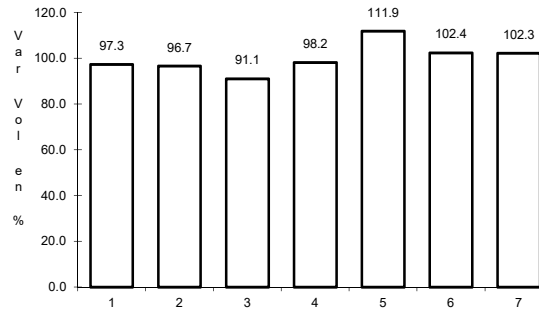
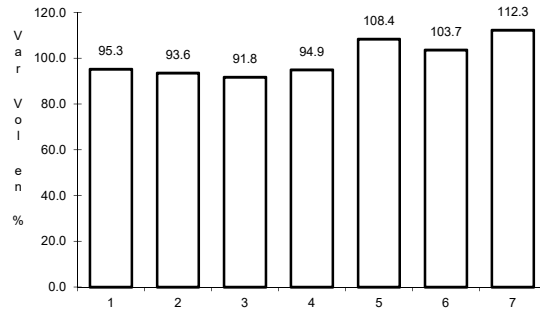
Km: 0.00 Tipo: 3 Sent: 2

Km: 107.95 Tipo: 1 Sent: 0

9 CARR: Hidalgo del Parral - Ent. Nuevo Palomas (Vía Corta)

CLAVE: 08811

RUTA: MEX-024



Km: 0.00 Tipo: 3 Sent: 0

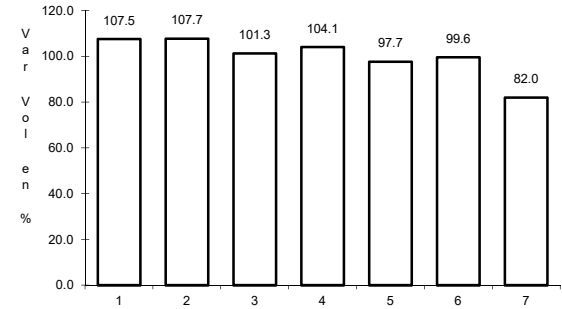
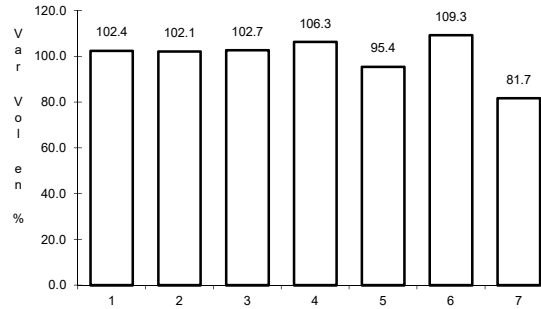
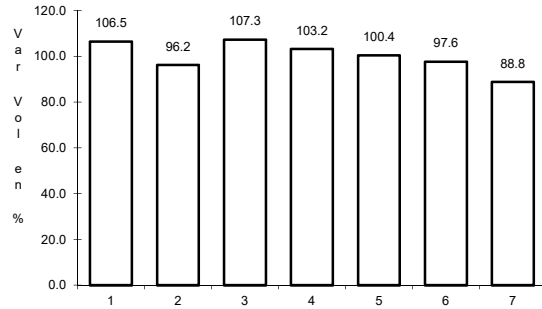
Km: 66.00 Tipo: 1 Sent: 0

Km: 182.40 Tipo: 1 Sent: 0

10 CARR: Hidalgo del Parral - Guadalupe y Calvo

CLAVE: 00802

RUTA: MEX-024



Km: 0.00 Tipo: 3 Sent: 0

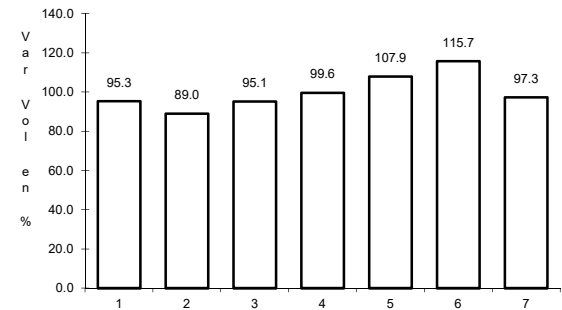
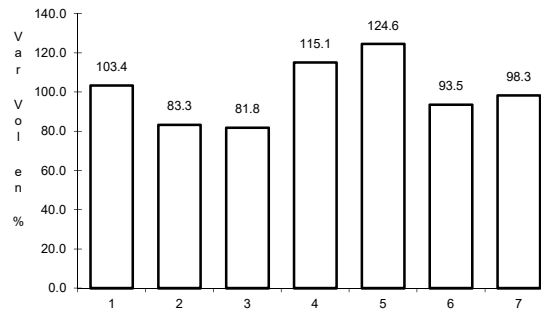
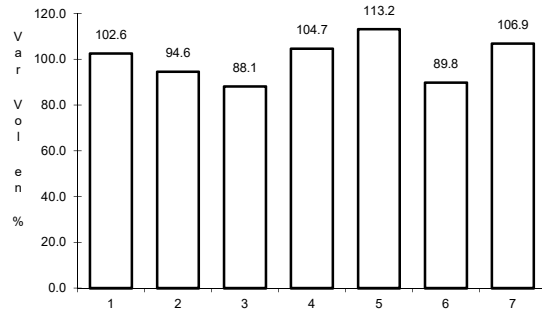
Km: 110.00 Tipo: 1 Sent: 0

Km: 212.00 Tipo: 1 Sent: 0

11 CARR: Hidalgo del Parral - Jiménez

CLAVE: 08444

RUTA: MEX-045



Km: 0.00 Tipo: 3 Sent: 1

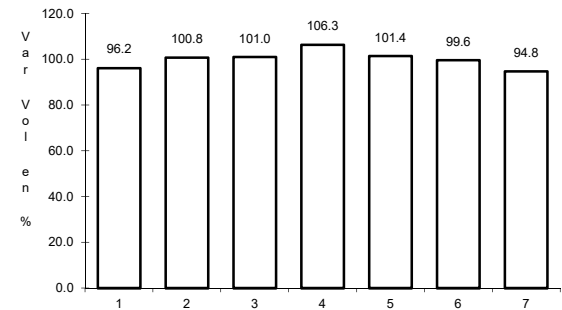
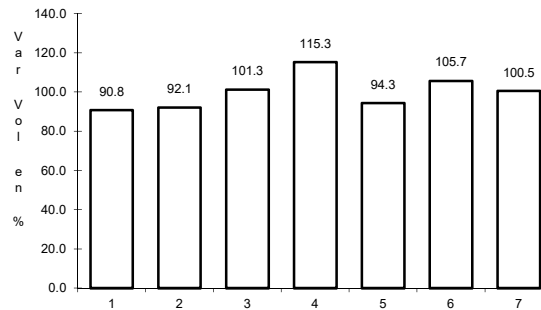
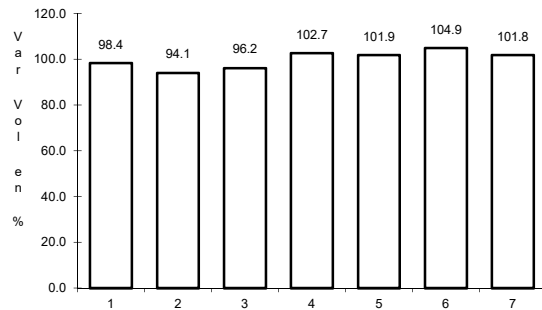
Km: 0.00 Tipo: 3 Sent: 2

Km: 76.63 Tipo: 1 Sent: 1

12 CARR: Janos - Agua Prieta

CLAVE: 00220

RUTA: MEX-002



Km: 0.00 Tipo: 3 Sent: 0

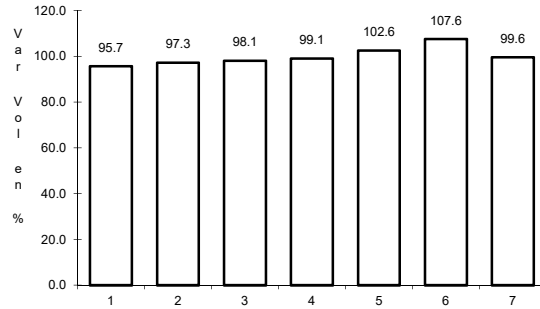
Km: 56.00 Tipo: 3 Sent: 0

Km: 160.00 Tipo: 1 Sent: 0

13 CARR: Jerónimo - Sta. Teresa

CLAVE: 08043

RUTA: MEX-002



Km: 0.00

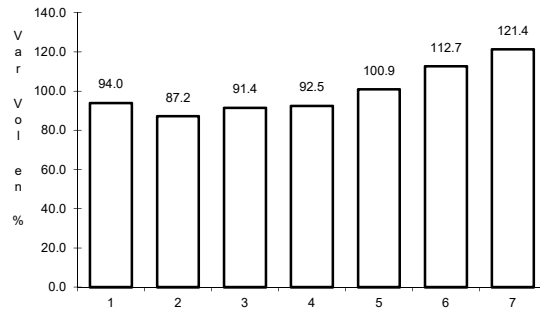
Tipo: 3

Sent: 0

14 CARR: La Junta - Yécora

CLAVE: 00065

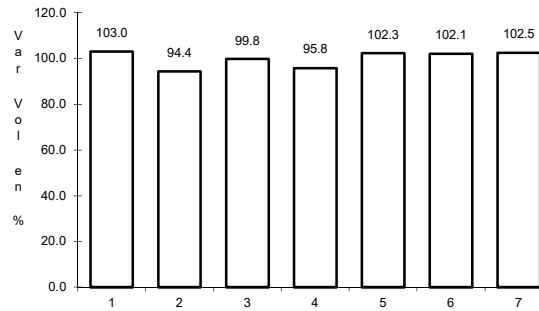
RUTA: MEX-016



Km: 0.00

Tipo: 3

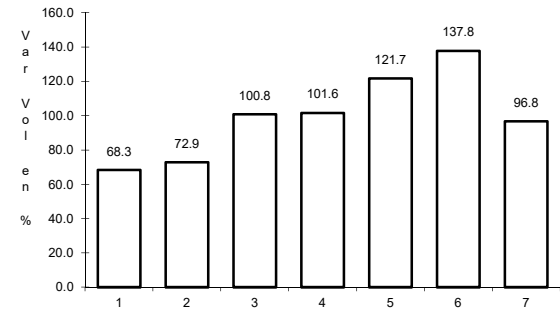
Sent: 0



Km: 70.00

Tipo: 3

Sent: 0



Km: 253.00

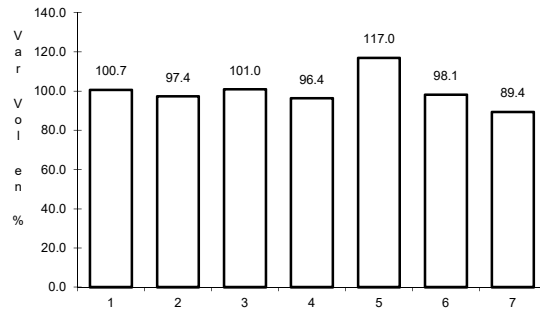
Tipo: 1

Sent: 0

15 CARR: Libramiento de Delicias - Meoqui

CLAVE: 08813

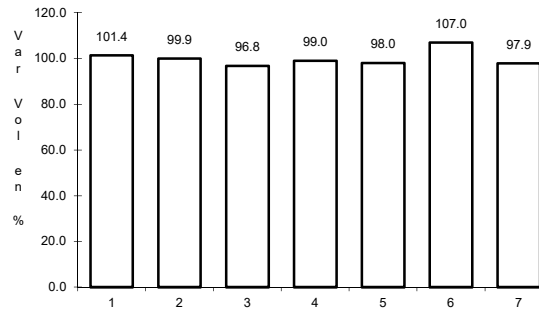
RUTA: MEX-045



Km: 0.00

Tipo: 3

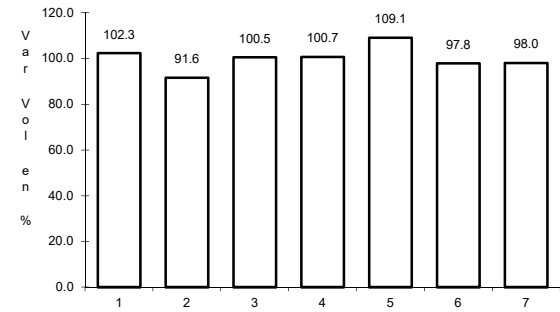
Sent: 1



Km: 0.00

Tipo: 3

Sent: 2



Km: 13.60

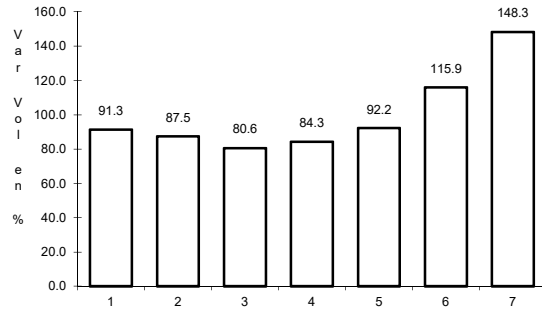
Tipo: 1

Sent: 1

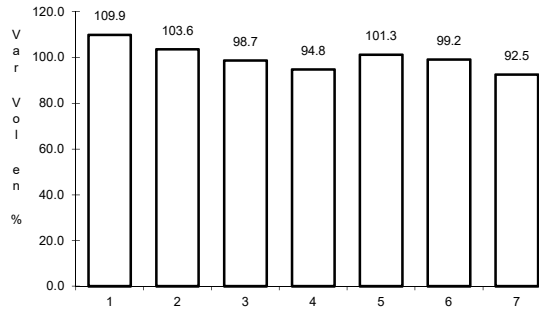
16 CARR: Porvenir - Cd. Juárez

CLAVE: 08169

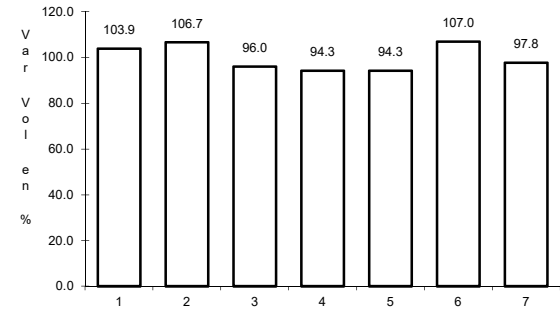
RUTA: MEX-002



Km: 1.67 Tipo: 3 Sent: 0



Km: 70.32 Tipo: 1 Sent: 1

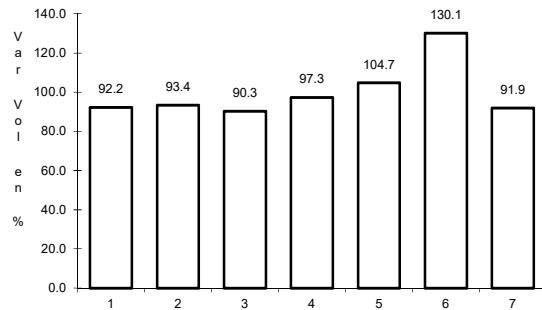


Km: 70.32 Tipo: 1 Sent: 2

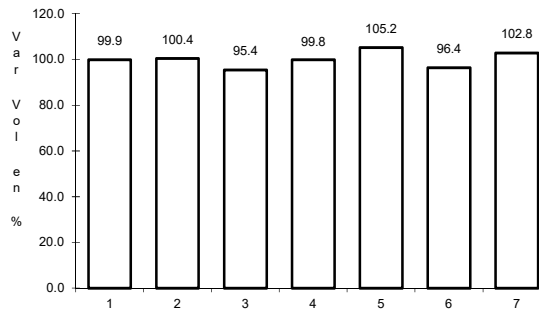
17 CARR: Ramal a Aeropuerto de Chihuahua

CLAVE: 08421

RUTA: MEX-016



Km: 0.00 Tipo: 3 Sent: 1

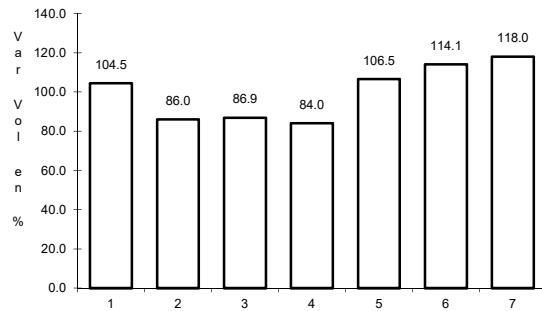


Km: 0.00 Tipo: 3 Sent: 2

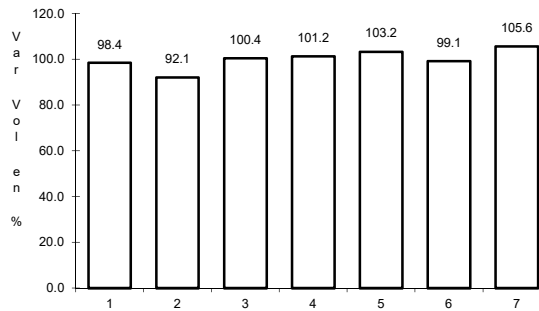
18 CARR: Ramal a Palomas

CLAVE: 08019

RUTA: MEX-002



Km: 0.00 Tipo: 3 Sent: 0

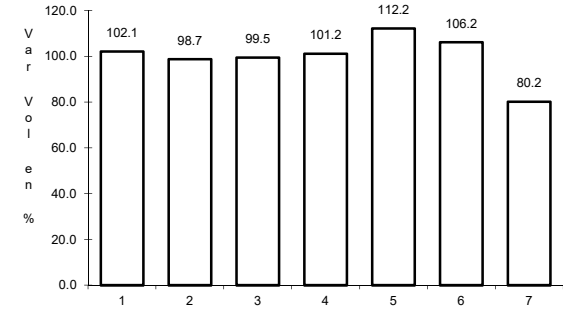
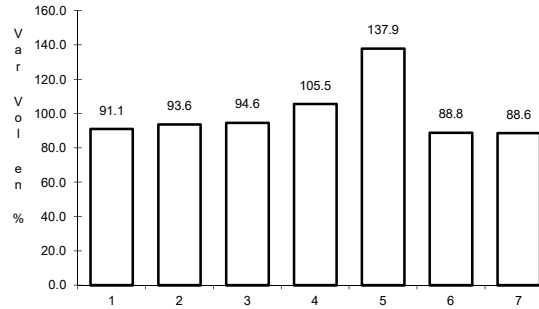
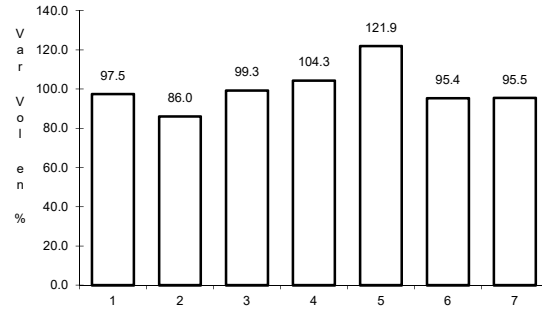


Km: 7.50 Tipo: 3 Sent: 0

19 CARR: Villa Ahumada - Cd. Juárez (Libre)

CLAVE: 08420

RUTA: MEX-045



Km: 83.63 Tipo: 3 Sent: 1

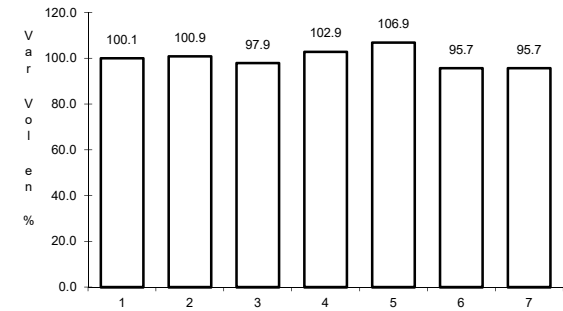
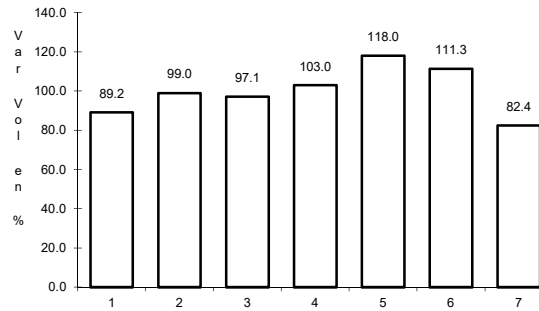
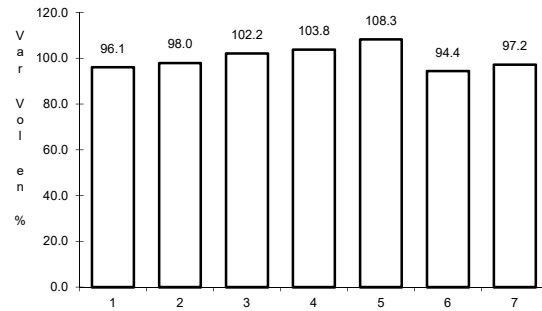
Km: 83.63 Tipo: 3 Sent: 2

Km: 201.35 Tipo: 1 Sent: 1

20 CARR: Camargo - Delicias (Cuota)

CLAVE: 08418

RUTA: MEX-045D



Km: 111.50 Tipo: 3 Sent: 1

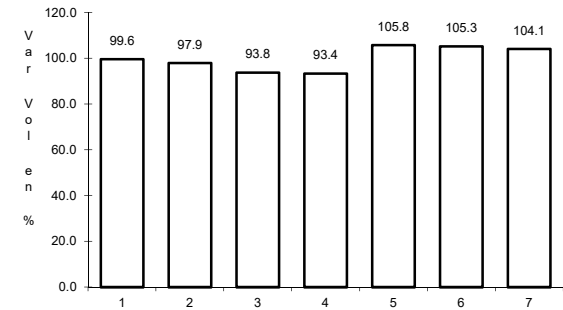
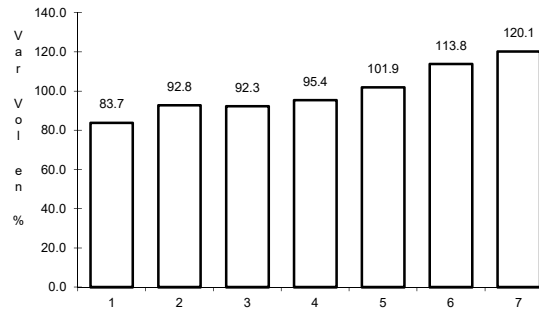
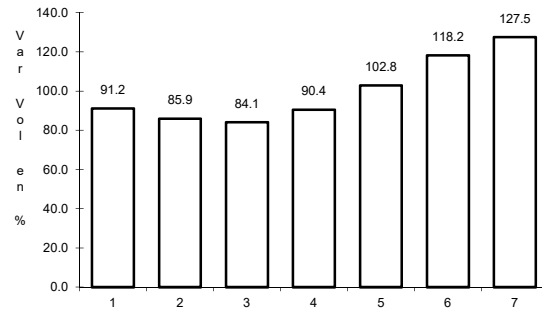
Km: 111.50 Tipo: 3 Sent: 2

Km: 138.00 Tipo: 1 Sent: 1

21 CARR: Chihuahua - Sacramento (Cuota)

CLAVE: 08015

RUTA: MEX-045D



Km: 18.12 Tipo: 3 Sent: 1

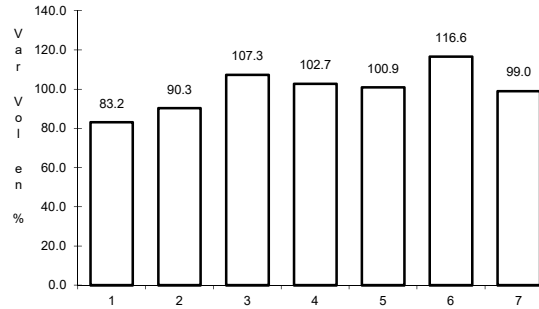
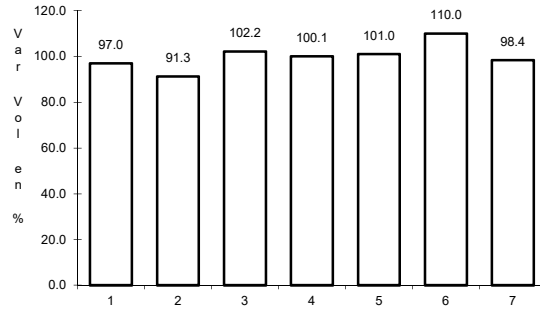
Km: 18.12 Tipo: 3 Sent: 2

Km: 20.00 Tipo: 3 Sent: 1

22 CARR: El Sueco - Villa Ahumada (Cuota)

CLAVE: 08420

RUTA: MEX-045D



Km: 0.00

Tipo: 3

Sent: 1

Km: 0.00

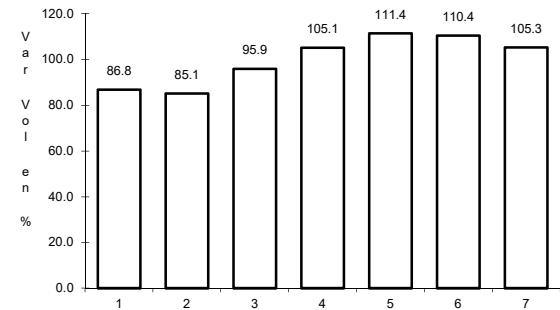
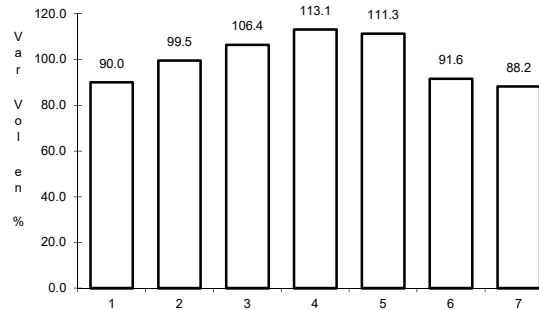
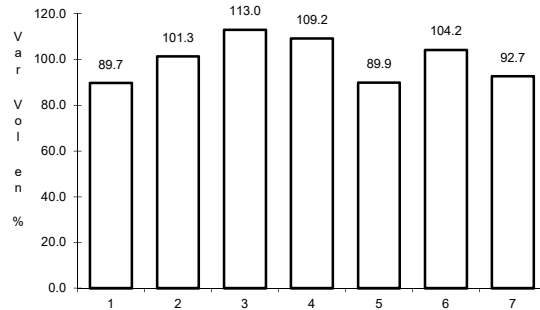
Tipo: 3

Sent: 2

23 CARR: Gómez Palacio - Corralitos (Cuota)

CLAVE: 00016

RUTA: MEX-049D



Km: 38.20

Tipo: 1

Sent: 1

Km: 38.20

Tipo: 1

Sent: 2

Km: 194.00

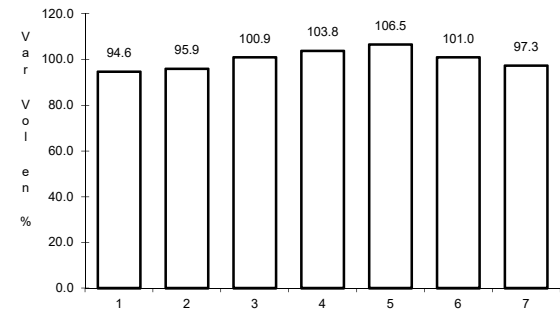
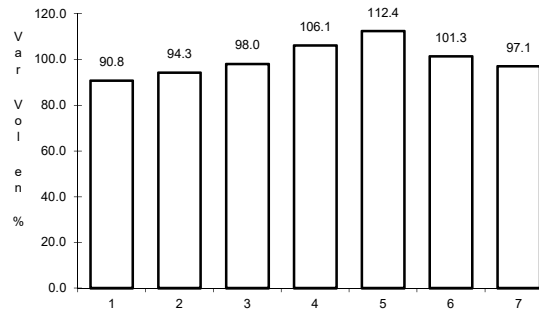
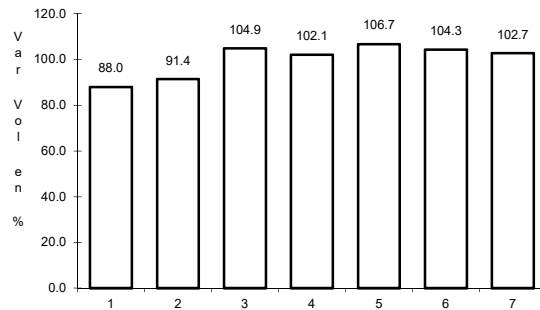
Tipo: 1

Sent: 1

24 CARR: Jiménez - Camargo (Cuota)

CLAVE: 08418

RUTA: MEX-045D



Km: 0.00

Tipo: 3

Sent: 1

Km: 0.00

Tipo: 3

Sent: 2

Km: 68.98

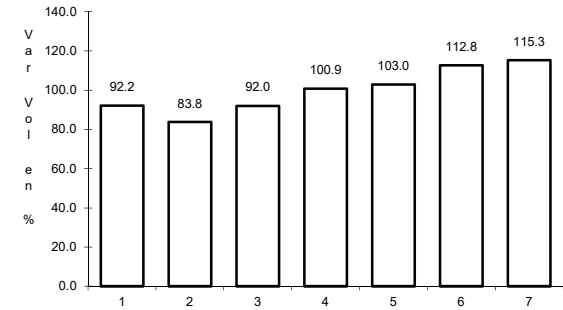
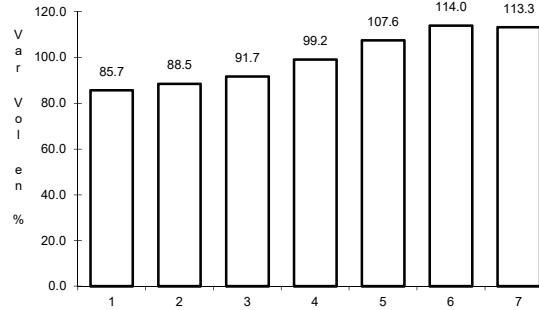
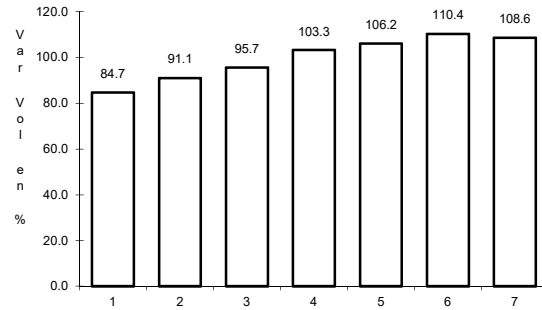
Tipo: 1

Sent: 1

25 CARR: Libramiento Oriente Chihuahua (Cuota)

CLAVE:

RUTA: MEX-045D



Km: 0.00 Tipo: 3 Sent: 0

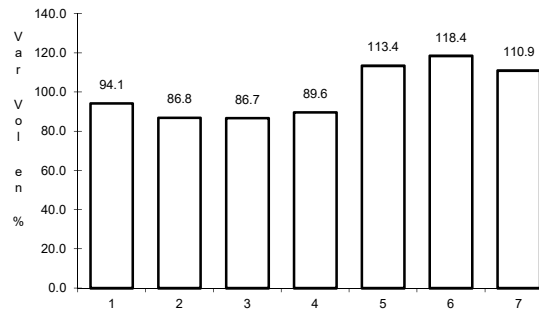
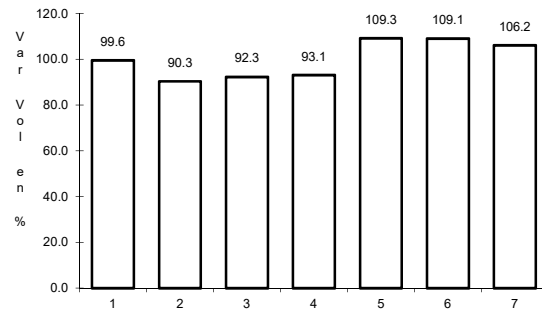
Km: 22.00 Tipo: 1 Sent: 0

Km: 22.00 Tipo: 3 Sent: 0

26 CARR: Ahumada - Ricardo Flores Magón

CLAVE: 08804

RUTA: CHIH



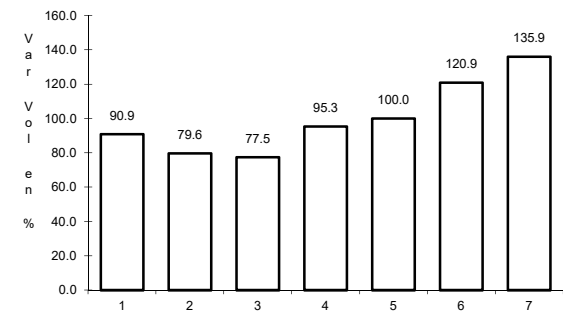
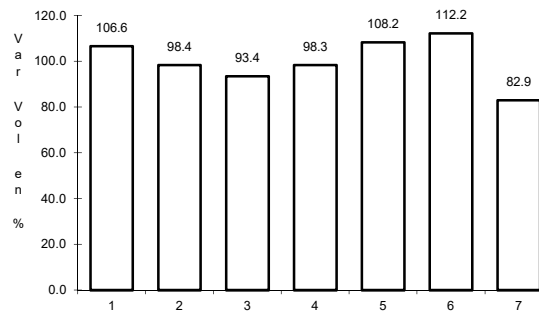
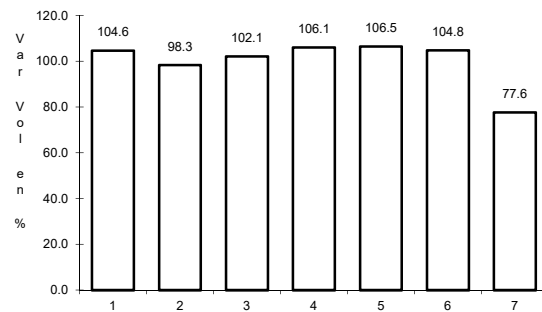
Km: 0.00 Tipo: 3 Sent: 0

Km: 96.00 Tipo: 1 Sent: 0

27 CARR: Cuauhtémoc - Buenaventura

CLAVE: 08015

RUTA: CHIH



Km: 0.00 Tipo: 3 Sent: 1

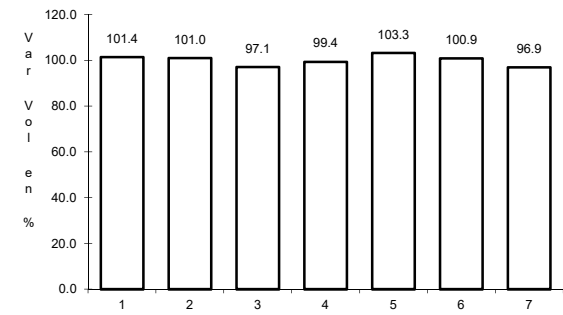
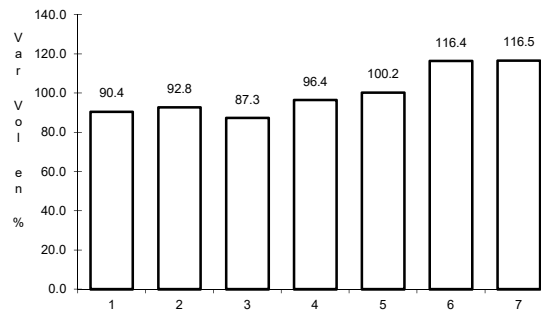
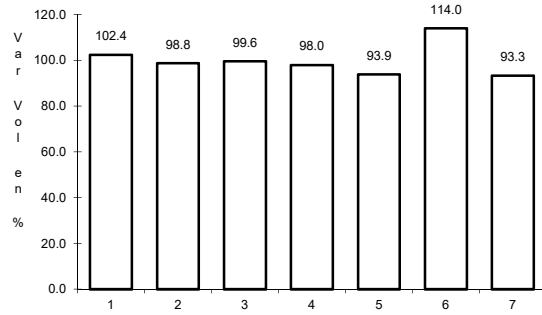
Km: 0.00 Tipo: 3 Sent: 2

Km: 253.30 Tipo: 1 Sent: 0

28 CARR: Delicias - Saucillo

CLAVE: 08007

RUTA: CHIH-007



Km: 0.00 Tipo: 3 Sent: 0

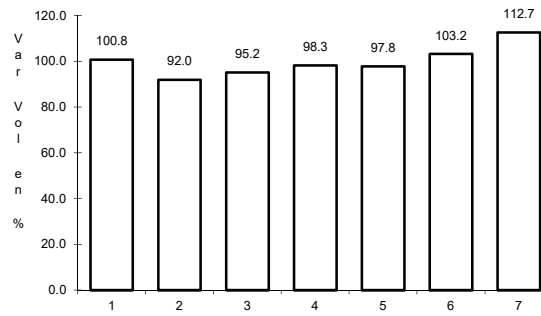
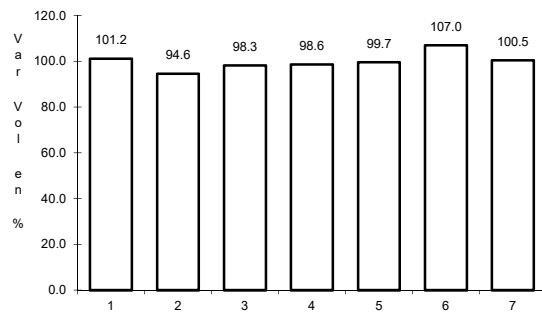
Km: 17.00 Tipo: 1 Sent: 0

Km: 33.00 Tipo: 1 Sent: 0

29 CARR: Ent. Peña Blanca - Ent. La Concha

CLAVE: 08493

RUTA: CHIH



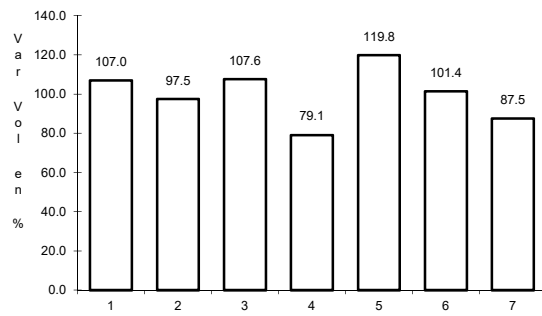
Km: 0.00 Tipo: 3 Sent: 0

Km: 17.00 Tipo: 1 Sent: 0

30 CARR: Ent. Puerto Justo - Ent. Guachoic

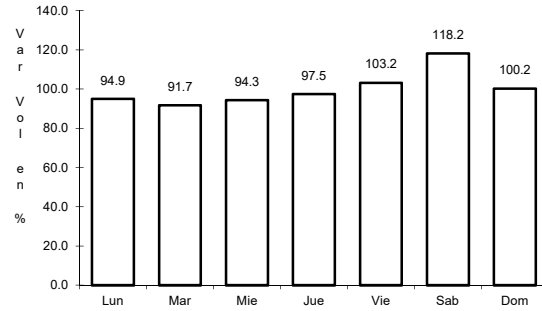
CLAVE: 08044

RUTA: CHIH



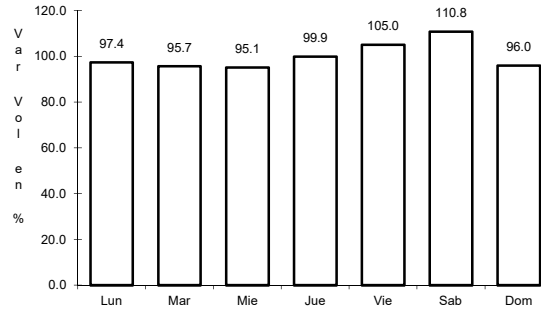
Km: 0.00 Tipo: 3 Sent: 0

31 CARR: Jiménez - Camargo



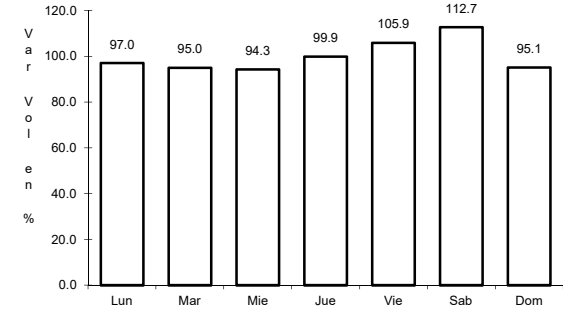
Km: 0.00 Tipo: 3 Sent: 0

CLAVE: 08021



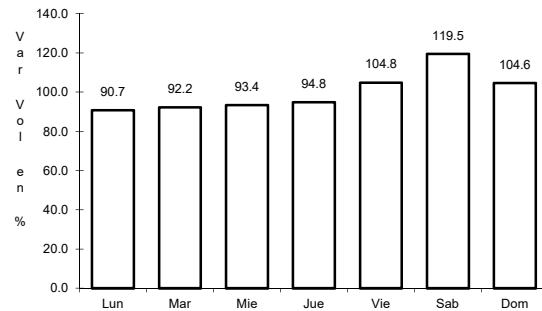
Km: 65.80 Tipo: 3 Sent: 0

RUTA: CHIH-049



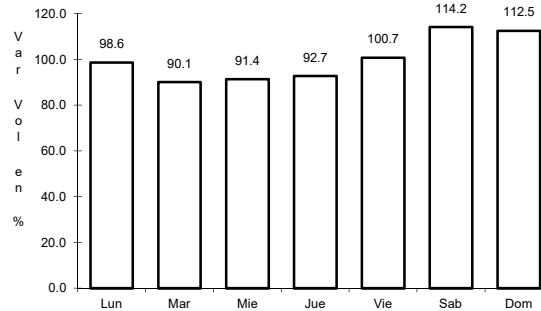
Km: 78.20 Tipo: 1 Sent: 0

32 CARR: Lázaro Cárdenas - Ent. Colonia San José



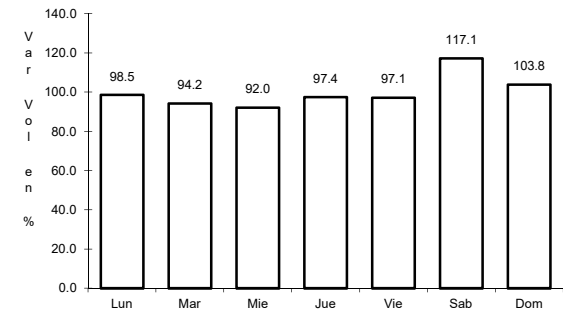
Km: 0.00 Tipo: 3 Sent: 1

CLAVE: 08004



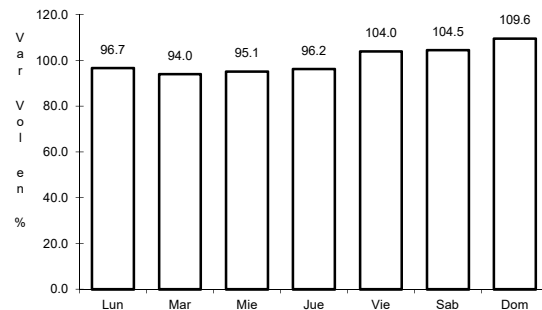
Km: 0.00 Tipo: 3 Sent: 2

RUTA: CHIH-004



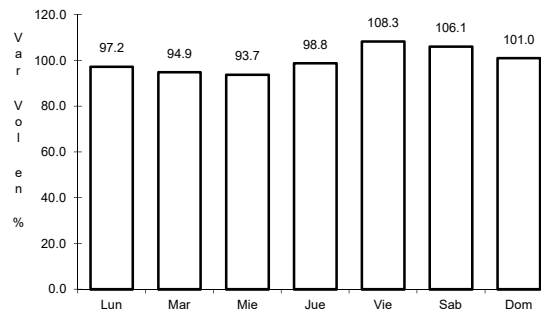
Km: 16.00 Tipo: 1 Sent: 0

33 CARR: Libramiento de Hidalgo del Parral



Km: 8.00 Tipo: 3 Sent: 1

CLAVE: 08221



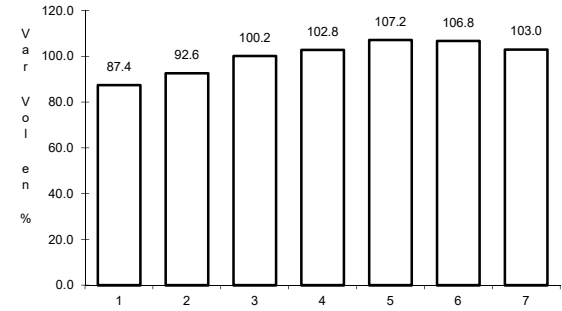
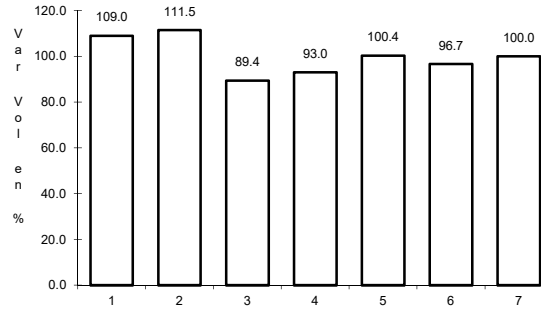
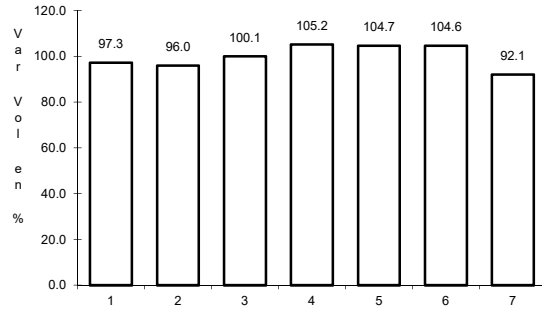
Km: 8.00 Tipo: 3 Sent: 2

RUTA: CHIH

34 CARR: Libramiento de Jiménez

CLAVE: 08047

RUTA: CHIH



Km: 0.00 Tipo: 3 Sent: 1

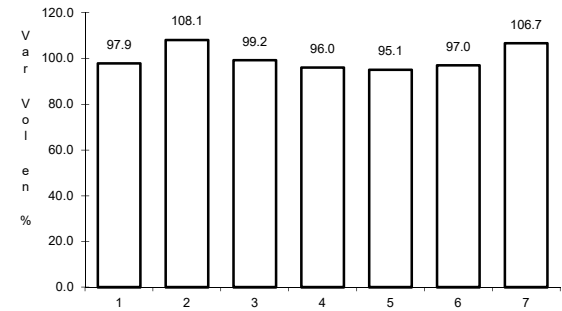
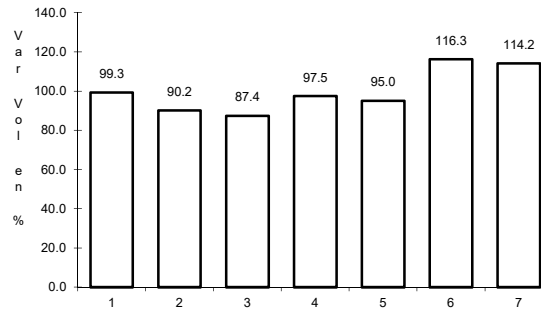
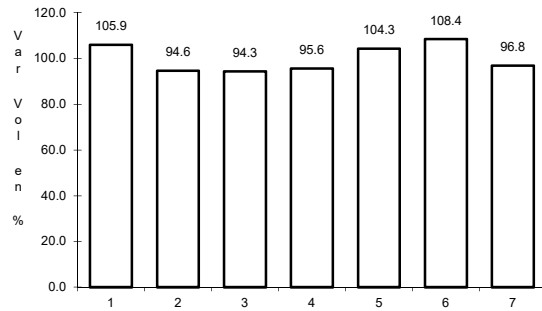
Km: 0.00 Tipo: 3 Sent: 2

Km: 3.40 Tipo: 1 Sent: 1

35 CARR: Meoqui - Julimes

CLAVE: 08005

RUTA: CHIH-005



Km: 0.00 Tipo: 3 Sent: 0

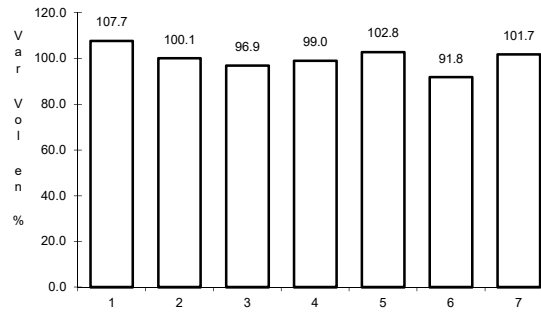
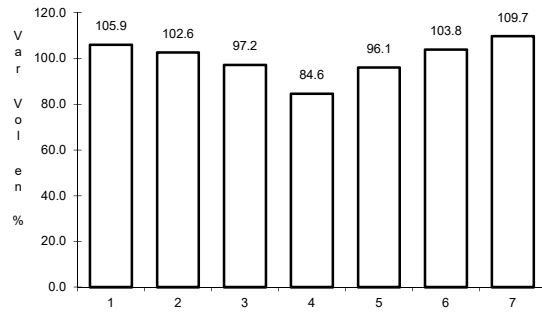
Km: 15.40 Tipo: 3 Sent: 0

Km: 23.00 Tipo: 1 Sent: 0

36 CARR: Ramal a Creel

CLAVE: 08812

RUTA: CHIH



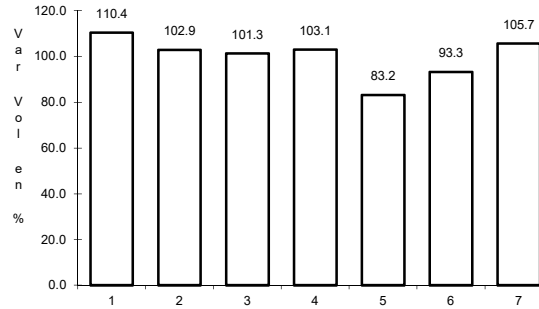
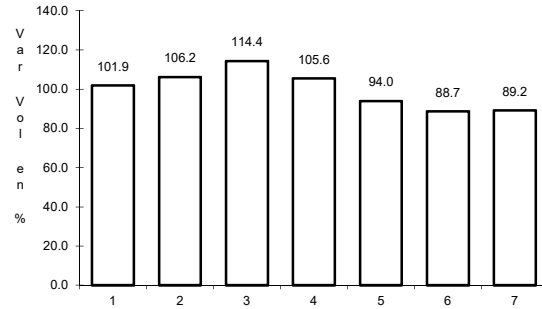
Km: 0.00 Tipo: 3 Sent: 0

Km: 58.00 Tipo: 3 Sent: 0

37 CARR: San Juanito - Ent. Basaseachi

CLAVE: 08045

RUTA: CHIH



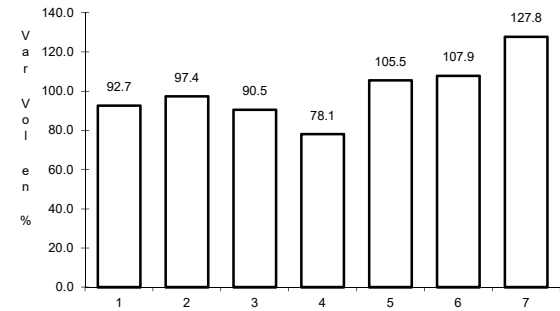
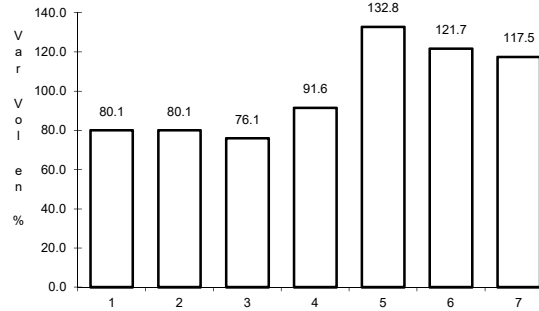
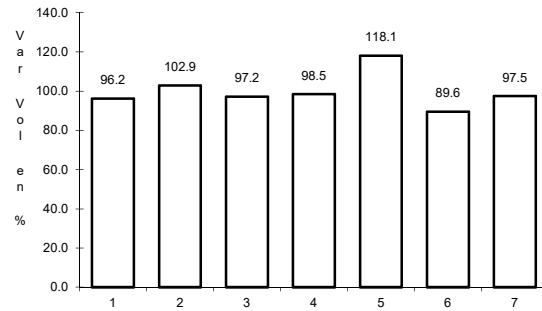
Km: 0.00 Tipo: 3 Sent: 0

Km: 84.00 Tipo: 1 Sent: 0

38 CARR: T. C. (Jiménez - Camargo) - Ojinaga

CLAVE: 08009

RUTA: CHIH-018



Km: 0.00 Tipo: 3 Sent: 1

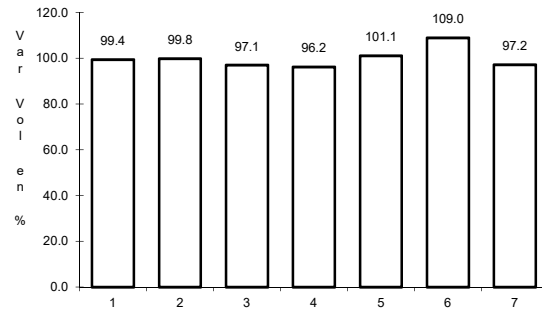
Km: 97.00 Tipo: 3 Sent: 0

Km: 247.00 Tipo: 1 Sent: 0

39 CARR: T. Julimes - La Boquilla

CLAVE: 08009

RUTA: CHIH-018

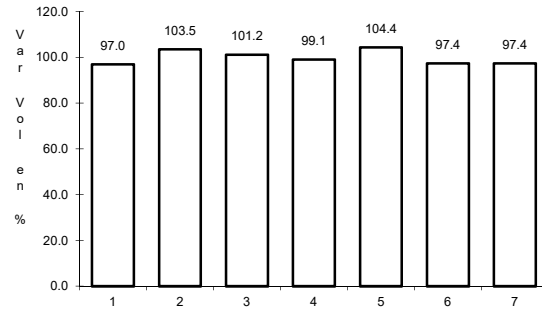


Km: 0.00 Tipo: 3 Sent: 0

40 CARR: Ent. El Álamo - Ent. Ricardo Flores Magón (Cuota)

CLAVE: 08046

RUTA: CHIH-D

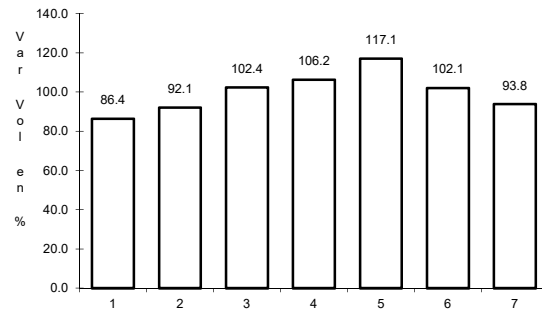


Km: 0.00 Tipo: 3 Sent: 0

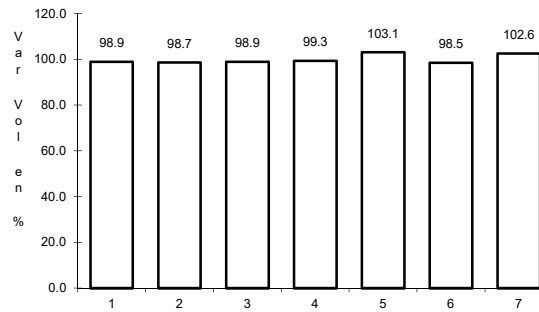
41 CARR: Ricardo Flores Magón - Galeana (Cuota)

CLAVE: 08019

RUTA: CHIH-D



Km: 0.00 Tipo: 3 Sent: 0

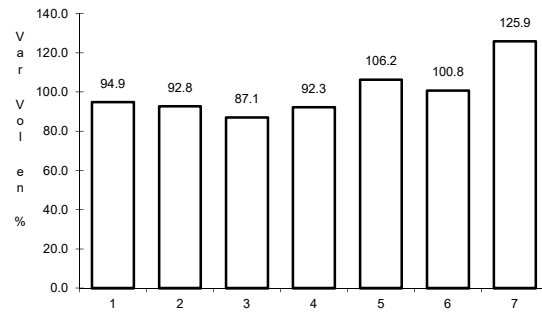


Km: 58.00 Tipo: 1 Sent: 0

42 CARR: Samalayuca - San Jerónimo (Cuota)

CLAVE: 08019

RUTA: CHIH-D

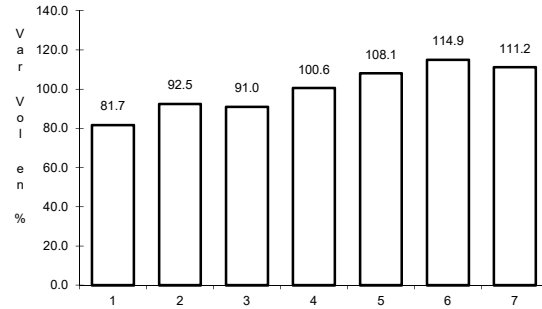


Km: 0.00 Tipo: 3 Sent: 0

43 CARR: T. C. (Chihuahua - Ojinaga) - La Mula (Cuota)

CLAVE: 08170

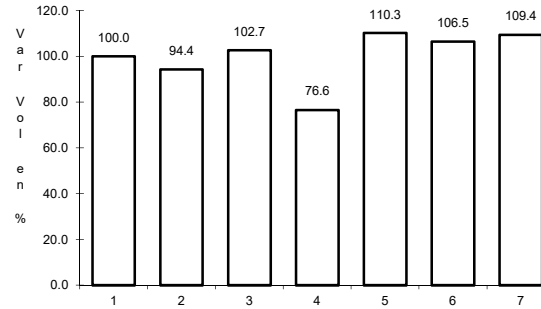
RUTA: CHIH-D



Km: 0.00

Tipo: 3

Sent: 0



Km: 110.00

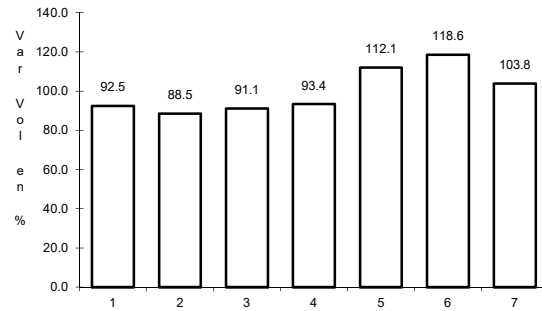
Tipo: 1

Sent: 0

44 CARR: Chihuahua - Madera

CLAVE: 08038

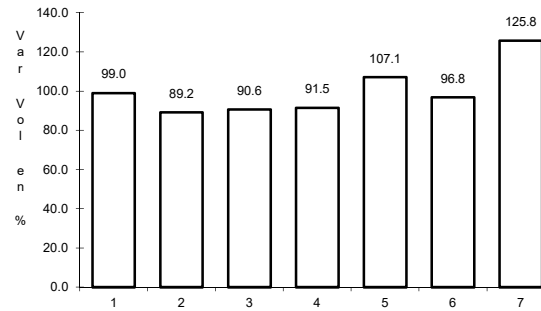
RUTA: CHIH-D-MEX-001-CHIH



Km: 10.50

Tipo: 1

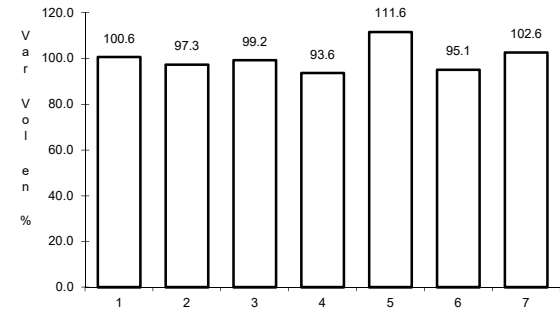
Sent: 1



Km: 10.50

Tipo: 1

Sent: 2



Km: 261.30

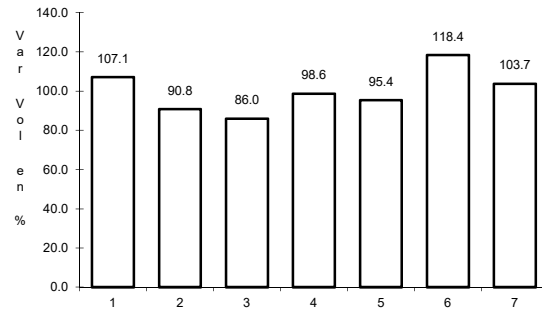
Tipo: 3

Sent: 0

45 CARR: Ent. Agua Caliente - El Terrero

CLAVE: 08170

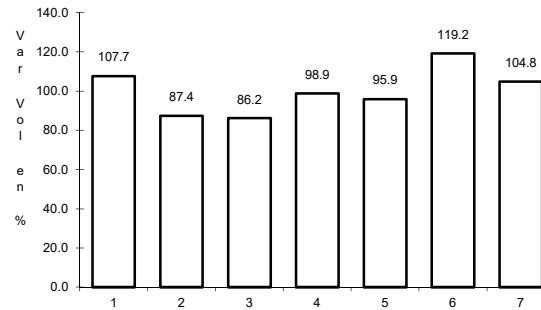
RUTA: CHIH-MEX



Km: 0.00

Tipo: 3

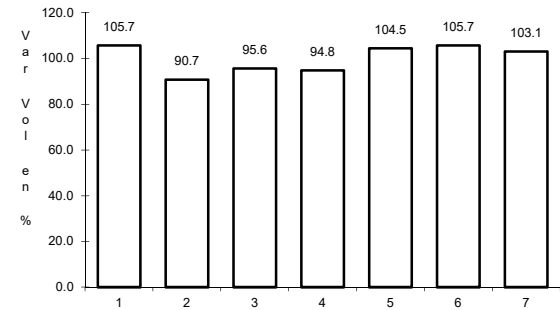
Sent: 0



Km: 22.00

Tipo: 1

Sent: 0



Km: 120.00

Tipo: 1

Sent: 0