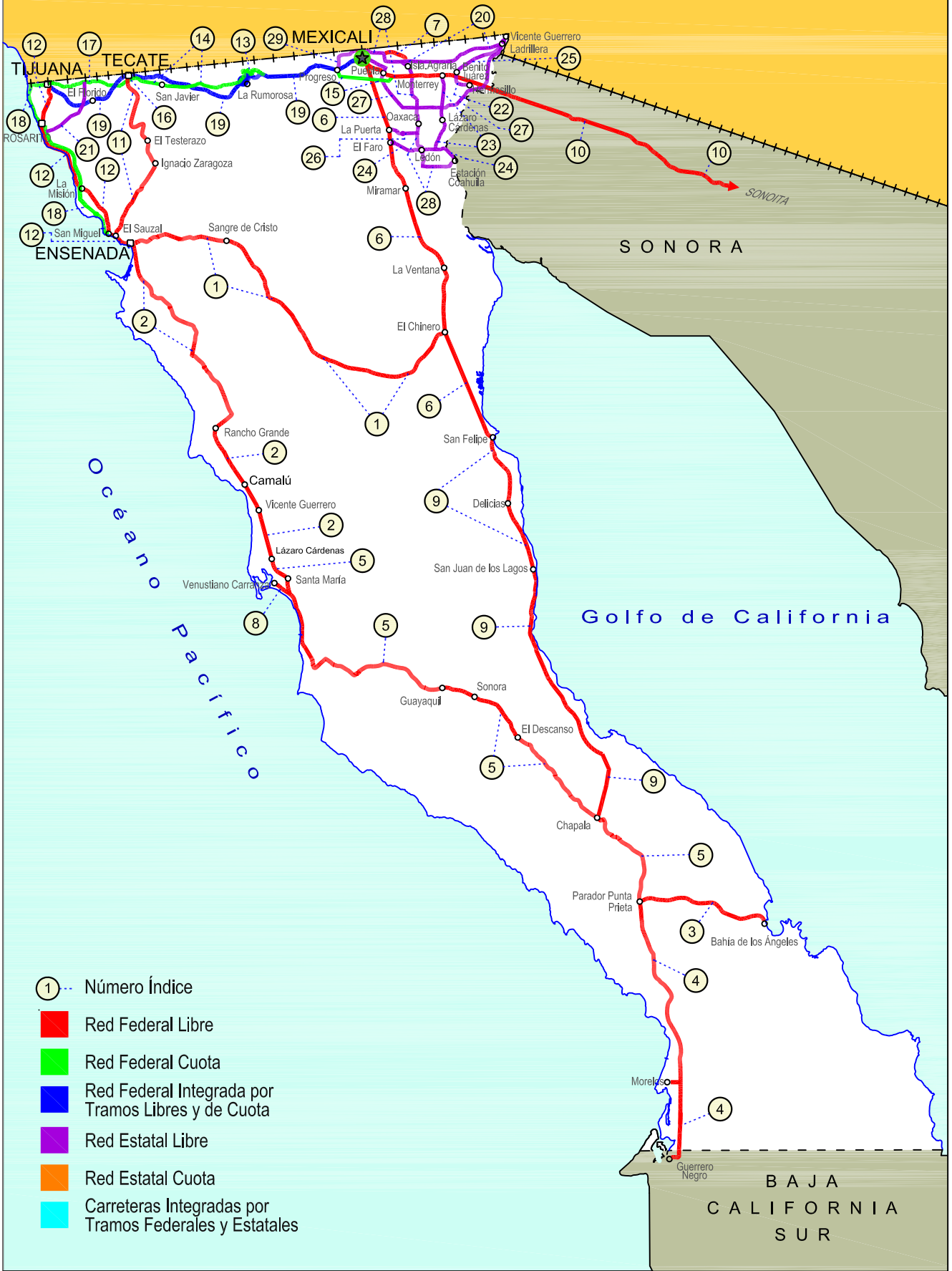
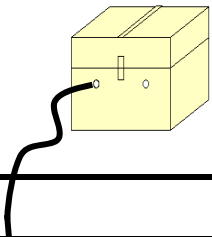


02 BAJA CALIFORNIA

SECRETARÍA DE COMUNICACIONES Y TRANSPORTES
DIRECCIÓN GENERAL DE SERVICIOS TÉCNICOS

ESTADOS UNIDOS DE NORTE AMÉRICA





BAJA CALIFORNIA

NO. INDICE CARRETERA	RUTA
---RED FEDERAL LIBRE---	
1 Ensenada - El Chinero	MEX-003
2 Ensenada - Lázaro Cárdenas	MEX-001
3 Ent. Punta Prieta - Bahía de Los Ángeles	MEX-001
4 Ent. Punta Prieta - Guerrero Negro	MEX-001
5 Lázaro Cárdenas - Ent. Punta Prieta	MEX-001
6 Mexicali - San Felipe	MEX-005
7 Ramal a Aeropuerto de Mexicali	MEX-002
8 Ramal a Venustiano Carranza	MEX-001
9 San Felipe - Chapala	MEX-005
10 Sonoita - Mexicali	MEX-002
11 Tecate - El Sauzal	MEX-003
12 Tijuana - Ensenada (Libre)	MEX-001
---RED FEDERAL DE CUOTA---	
13 El Centinela - La Rumorosa (Cuota)	MEX-002D
14 La Rumorosa - Tecate (Cuota)	MEX-002D
15 Libramiento de Mexicali (Cuota)	MEX-002D
16 Libramiento de Tecate (Cuota)	MEX-002D
17 Tecate - Tijuana (Cuota)	MEX-002D
18 Tijuana - Ensenada (Cuota)	MEX-001D
---RED FEDERAL INTEGRADA POR TRAMOS LIBRES Y DE CUOTA---	
19 Mexicali - Tijuana	MEX-002D-MEX
---RED ESTATAL LIBRE---	
20 Algodones - Ent. Islas Agrarias Grupo B	BC-008
21 Corredor Tijuana 2000	BC
22 Ejido Benito Juárez - Ejido Chiapas	BC-061
23 Ejido Monterrey - Mazón	BC-003
24 El Faro - Estación Coahuila	BC-004
25 Ent. Santa Rosa - Ent. Pachuca	BC-006
26 La Puerta - T. C. (Mexicali - Estación Coahuila)	BC-010
27 Mexicali - Algodones	BC-002
28 Mexicali - Estación Coahuila	BC-001
29 Mexicali - Progreso	BC-005

BAJA CALIFORNIA

1 CARR: Ensenada - El Chinero

CLAVE: 02009

RUTA: MEX-003

AÑO: 2016

LUGAR	ESTACION				CLASIFICACION VEHICULAR EN PORCIENTO										COORDENADAS					
	KM	TE	SC	TDPA	M	A	B	C2	C3	T3S2	T3S3	T3S2R4	OTROS	A	B	C	K'	D	LATITUD	LONGITUD
Ensenada	0.00	3	0	3736	1.4	76.7	0.6	14.3	0.9	3.8	1.3	0.3	0.7	78.1	0.6	21.3	0.086	0.501	31.872546	-116.554674
El Tule	12.40	1	0	3166	1.6	74.7	0.6	15.3	1.0	4.3	1.5	0.2	0.8	76.3	0.6	23.1	0.100	0.501	31.888573	-116.504251
El Tule	12.40	3	0	2583	0.9	77.4	1.0	12.1	1.7	4.3	2.0	0.2	0.4	78.3	1.0	20.7	0.087	0.516	31.888881	-116.496372
Ojos Negros	38.50	1	0	2047	0.6	71.2	1.5	14.7	1.1	6.8	3.1	0.3	0.7	71.8	1.5	26.7	0.109	0.514	31.888648	-116.281176
San Salvador	60.50	1	0	1140	0.9	77.8	1.0	12.5	1.7	3.0	2.5	0.3	0.3	78.7	1.0	20.3	0.142	0.523	31.864563	-116.117665
Héroes de La Independencia	93.00	3	0	912	0.5	68.7	1.0	10.5	1.1	10.1	7.1	0.7	0.3	69.2	1.0	29.8	0.072	0.502	31.600247	-115.873709
Leyes de Reforma	103.00	3	0	1000	0.6	72.6	1.0	8.9	2.6	9.4	3.3	0.5	1.1	73.2	1.0	25.8	0.129	0.514	31.532633	-115.818900
Lázaro Cárdenas	122.00	3	0	1027	0.5	70.1	2.1	9.4	1.6	8.6	6.7	0.5	0.5	70.6	2.1	27.3	0.098	0.509	31.402389	-115.719523
Francisco R. Serrano	137.50	3	0	809	1.0	61.9	1.8	14.0	1.8	9.6	8.0	0.8	1.1	62.9	1.8	35.3	0.105	0.521	31.320949	-115.517664
El Chinero	196.00	1	0	674	2.0	61.0	1.9	10.5	2.2	10.6	9.3	1.2	1.3	63.0	1.9	35.1	0.091	0.549	31.429379	-115.056655

2 CARR: Ensenada - Lázaro Cárdenas

CLAVE: 02098

RUTA: MEX-001

AÑO: 2016

LUGAR	ESTACION				CLASIFICACION VEHICULAR EN PORCIENTO										COORDENADAS					
	KM	TE	SC	TDPA	M	A	B	C2	C3	T3S2	T3S3	T3S2R4	OTROS	A	B	C	K'	D	LATITUD	LONGITUD
Ensenada	0.00	3	1	30756	0.9	85.2	0.3	8.7	0.4	1.4	2.1	0.4	0.6	86.1	0.3	13.6	0.068	0.502	31.821910	-116.598898
Ensenada	0.00	3	2	30494	0.6	84.6	0.3	9.3	0.4	1.6	2.2	0.4	0.6	85.2	0.3	14.5	0.068	0.502	31.821917	-116.598850
T. Der. Aeropuerto	13.50	3	1	15560	0.5	82.3	1.3	9.6	1.6	2.5	1.2	0.4	0.6	82.8	1.3	15.9	0.069	0.504	31.788900	-116.592433
T. Der. Aeropuerto	13.50	3	2	15796	0.5	80.8	1.4	10.4	1.8	2.9	1.2	0.4	0.6	81.3	1.4	17.3	0.071	0.504	31.788666	-116.592300
T. Der. La Bufadora	21.16	1	1	17535	0.5	87.2	1.1	3.4	3.8	1.8	1.2	0.4	0.6	87.7	1.1	11.2	0.071	0.511	31.732247	-116.580794
T. Der. La Bufadora	21.16	1	2	16778	0.5	86.2	1.3	3.8	4.0	2.0	1.2	0.4	0.6	86.7	1.3	12.0	0.069	0.511	31.732250	-116.580783
T. Der. La Bufadora	21.16	3	0	15797	0.3	81.1	1.9	11.0	0.9	3.9	0.4	0.2	0.3	81.4	1.9	16.7	0.076	0.504	31.712950	-116.570900
Cañón Buenavista	30.40	1	0	26055	0.6	71.4	1.8	14.4	0.9	9.5	0.9	0.2	0.3	72.0	1.8	26.2	0.084	0.513	31.676911	-116.523422
Cañón Buenavista	30.40	3	0	5682	0.3	71.1	1.7	14.6	1.0	9.6	0.9	0.3	0.5	71.4	1.7	26.9	0.074	0.506	31.659156	-116.517767
Santo Tomás	52.00	1	0	5416	0.8	74.1	4.5	8.9	2.4	8.5	0.2	0.2	0.4	74.9	4.5	20.6	0.061	0.517	31.585683	-116.420767
Misión San Vicente	90.00	1	0	4548	0.5	71.2	2.2	11.0	1.1	11.3	1.6	0.5	0.6	71.7	2.2	26.1	0.080	0.508	31.331141	-116.251854
El Salado	104.50	1	0	4120	0.3	70.5	2.3	12.0	1.2	10.6	1.9	0.5	0.7	70.8	2.3	26.9	0.070	0.513	31.237250	-116.170550
Punta Colonet	128.00	1	0	5825	0.6	72.4	2.7	10.7	1.0	10.2	1.5	0.3	0.6	73.0	2.7	24.3	0.064	0.505	31.080444	-116.204294
Punta Colonet	128.00	3	0	5375	0.1	71.3	3.3	11.9	1.0	9.7	1.8	0.3	0.6	71.4	3.3	25.3	0.067	0.503	31.052495	-116.207831
Camalú	159.00	1	0	5852	0.4	72.8	4.1	10.5	1.0	8.5	1.6	0.4	0.7	73.2	4.1	22.7	0.077	0.501	30.846150	-116.065600
Colonia Vicente Guerrero (Lázaro Cárdenas)	172.40	3	0	12522	0.2	76.0	3.8	10.0	0.6	7.5	0.8	0.3	0.8	76.2	3.8	20.0	0.079	0.505	30.706856	-115.986239
San Quintín	193.00	1	0	12701	0.2	76.9	3.6	9.7	0.6	7.0	0.8	0.3	0.9	77.1	3.6	19.3	0.073	0.502	30.593874	-115.952263
San Quintín	193.00	3	1	10122	0.0	91.5	1.5	4.0	0.3	1.6	0.8	0.1	0.2	91.5	1.5	7.0	0.076	0.504	30.553812	-115.939829
San Quintín	193.00	3	2	9951	0.3	90.5	1.6	4.3	0.3	1.8	0.9	0.1	0.2	90.8	1.6	7.6	0.071	0.504	30.554167	-115.939867

BAJA CALIFORNIA

2 CARR: Ensenada - Lázaro Cárdenas

CLAVE: 02098

RUTA: MEX-001

AÑO: 2016

LUGAR	ESTACION				CLASIFICACION VEHICULAR EN PORCIENTO												COORDENADAS			
	KM	TE	SC	TDPA	M	A	B	C2	C3	T3S2	T3S3	T3S2R4	OTROS	A	B	C	K'	D	LATITUD	LONGITUD
Lazáro Cárdenas	196.00																			

3 CARR: Ent. Punta Prieta - Bahía de Los Ángeles

CLAVE: 02322

RUTA: MEX-001

AÑO: 2016

LUGAR	ESTACION				CLASIFICACION VEHICULAR EN PORCIENTO												COORDENADAS			
	KM	TE	SC	TDPA	M	A	B	C2	C3	T3S2	T3S3	T3S2R4	OTROS	A	B	C	K'	D	LATITUD	LONGITUD
Parador Punta Prieta	0.00	3	0	145	0.1	76.7	0.9	18.2	2.5	1.5	0.0	0.0	0.1	76.8	0.9	22.3	0.172	0.535	29.045550	-114.149050
Bahía de Los Angeles	68.00	1	0	202	2.9	72.1	0.3	18.0	6.1	0.4	0.1	0.1	0.0	75.0	0.3	24.7	0.144	0.545	28.961667	-113.565194

4 CARR: Ent. Punta Prieta - Guerrero Negro

CLAVE: 00321

RUTA: MEX-001

AÑO: 2016

LUGAR	ESTACION				CLASIFICACION VEHICULAR EN PORCIENTO												COORDENADAS			
	KM	TE	SC	TDPA	M	A	B	C2	C3	T3S2	T3S3	T3S2R4	OTROS	A	B	C	K'	D	LATITUD	LONGITUD
Parador Punta Prieta	0.00	3	0	739	0.4	67.1	2.5	12.0	1.2	13.4	2.7	0.6	0.1	67.5	2.5	30.0	0.134	0.509	29.042798	-114.152401
Rosarito	50.60	3	0	1016	0.3	68.7	2.9	8.3	0.4	16.3	1.8	0.4	0.9	69.0	2.9	28.1	0.085	0.507	28.624033	-114.032317
Tanatán	70.10	3	0	928	0.3	61.2	2.9	10.3	0.8	21.2	1.7	0.4	1.2	61.5	2.9	35.6	0.089	0.513	28.493813	-114.015057
Tampico	105.00	1	0	1143	0.4	62.5	2.5	11.5	1.9	17.0	2.1	1.1	1.0	62.9	2.5	34.6	0.099	0.506	28.219193	-113.999953
Lim. Edos. Term. B.C. Ppia. B.C.S. (Paralelo 28)	128.56																			
Ent. Guerrero Negro	130.00	1	0	1807	0.8	78.6	1.6	9.0	0.5	7.7	1.3	0.2	0.3	79.4	1.6	19.0	0.079	0.513	27.971666	-114.013707

5 CARR: Lázaro Cárdenas - Ent. Punta Prieta

CLAVE: 02319

RUTA: MEX-001

AÑO: 2016

LUGAR	ESTACION				CLASIFICACION VEHICULAR EN PORCIENTO												COORDENADAS			
	KM	TE	SC	TDPA	M	A	B	C2	C3	T3S2	T3S3	T3S2R4	OTROS	A	B	C	K'	D	LATITUD	LONGITUD
Lazáro Cárdenas	0.00	3	0	14177	0.4	81.3	2.8	11.5	0.5	2.3	0.9	0.1	0.2	81.7	2.8	15.5	0.071	0.507	30.505275	-115.924767
Rosario de Arriba	53.70	1	0	1682	0.6	66.7	4.3	14.7	1.0	10.4	1.3	0.5	0.5	67.3	4.3	28.4	0.080	0.505	30.067381	-115.731755
Rosario de Arriba	53.70	3	0	2327	0.7	74.4	1.9	13.5	0.8	7.5	0.8	0.3	0.1	75.1	1.9	23.0	0.070	0.505	30.077333	-115.698733
T. Der. Emiliano Zapata	80.00	3	0	956	0.7	54.7	3.2	16.3	1.6	16.9	5.6	0.6	0.4	55.4	3.2	41.4	0.087	0.508	30.032817	-115.524983
San Agustín	140.00	1	0	956	0.6	65.0	2.1	15.9	1.4	12.7	1.8	0.5	0.0	65.6	2.1	32.3	0.101	0.526	29.922021	-114.981201
San Agustín	140.00	3	0	648	0.6	59.8	2.3	15.9	1.7	16.8	2.1	0.7	0.1	60.4	2.3	37.3	0.128	0.504	29.920364	-114.960353
San Luis	173.00	1	0	919	0.6	68.5	2.1	13.9	1.5	10.5	2.1	0.3	0.5	69.1	2.1	28.8	0.109	0.510	29.742528	-114.735880
Rancho Chapala	222.80	1	0	744	0.6	69.0	2.0	13.7	1.5	9.8	2.5	0.3	0.6	69.6	2.0	28.4	0.138	0.509	29.396299	-114.393772
Parador Punta Prieta	275.66	1	0	763	0.6	64.4	2.2	14.3	1.4	14.4	1.9	0.6	0.2	65.0	2.2	32.8	0.107	0.504	29.048048	-114.153145

BAJA CALIFORNIA

6 CARR: Mexicali - San Felipe

CLAVE: 02096

RUTA: MEX-005

AÑO: 2016

LUGAR	ESTACION				CLASIFICACION VEHICULAR EN PORCIENTO													COORDENADAS		
	KM	TE	SC	TDPA	M	A	B	C2	C3	T3S2	T3S3	T3S2R4	OTROS	A	B	C	K'	D	LATITUD	LONGITUD
Mexicali	0.00	3	1	9972	1.9	86.2	0.9	3.8	2.6	3.6	0.4	0.3	0.3	88.1	0.9	11.0	0.070	0.501	32.554321	-115.417340
Mexicali	0.00	3	2	9926	1.8	85.4	1.0	4.1	2.9	3.8	0.4	0.3	0.3	87.2	1.0	11.8	0.068	0.501	32.554369	-115.417165
La Puerta	32.00	1	1	3482	0.2	91.8	0.9	1.5	1.5	2.2	1.0	0.3	0.6	92.0	0.9	7.1	0.094	0.516	32.346987	-115.333129
La Puerta	32.00	1	2	3719	1.2	90.4	0.9	1.6	1.5	2.2	1.1	0.3	0.8	91.6	0.9	7.5	0.072	0.516	32.346985	-115.333130
T. Izq. Estación Coahuila	39.00	1	1	2434	0.1	91.4	0.6	3.8	1.2	1.7	0.6	0.3	0.3	91.5	0.6	7.9	0.093	0.520	32.283791	-115.322694
T. Izq. Estación Coahuila	39.00	1	2	2635	0.2	90.6	0.8	4.1	1.4	1.8	0.6	0.3	0.2	90.8	0.8	8.4	0.088	0.520	32.284467	-115.322617
T. Izq. Estación Coahuila	39.00	3	0	2553	0.2	66.2	0.9	13.9	3.6	6.6	7.4	0.5	0.7	66.4	0.9	32.7	0.093	0.504	32.265235	-115.321310
El Chinero	141.00	1	0	1899	0.1	71.8	1.5	17.3	0.8	5.1	3.1	0.2	0.1	71.9	1.5	26.6	0.107	0.519	31.441191	-115.053581
El Chinero	141.00	3	0	1504	0.1	72.2	1.0	19.0	1.7	4.1	1.7	0.1	0.1	72.3	1.0	26.7	0.094	0.533	31.425828	-115.046322
San Felipe	189.60	1	1	2617	0.0	72.3	0.9	25.2	0.7	0.7	0.2	0.0	0.0	72.3	0.9	26.8	0.097	0.510	31.037321	-114.864985
San Felipe	189.60	1	2	2511	0.3	68.0	1.0	28.9	0.9	0.8	0.1	0.0	0.0	68.3	1.0	30.7	0.089	0.510	31.037377	-114.864823

7 CARR: Ramal a Aeropuerto de Mexicali

CLAVE: 02321

RUTA: MEX-002

AÑO: 2016

LUGAR	ESTACION				CLASIFICACION VEHICULAR EN PORCIENTO													COORDENADAS		
	KM	TE	SC	TDPA	M	A	B	C2	C3	T3S2	T3S3	T3S2R4	OTROS	A	B	C	K'	D	LATITUD	LONGITUD
T. C. Mexicali - Estación Coahuila	0.00	3	0	11680	1.0	87.6	0.4	5.2	1.5	3.0	0.4	0.3	0.6	88.6	0.4	11.0	0.070	0.503	32.650517	-115.340567
Aeropuerto	10.00	1	0	4870	1.1	85.5	1.2	5.1	1.1	3.4	1.0	0.7	0.9	86.6	1.2	12.2	0.102	0.507	32.628424	-115.253155
T. C. Algodones - Islas Agrarias Grupo B	12.10																			

8 CARR: Ramal a Venustiano Carranza

CLAVE: 02506

RUTA: MEX-001

AÑO: 2016

LUGAR	ESTACION				CLASIFICACION VEHICULAR EN PORCIENTO													COORDENADAS		
	KM	TE	SC	TDPA	M	A	B	C2	C3	T3S2	T3S3	T3S2R4	OTROS	A	B	C	K'	D	LATITUD	LONGITUD
T. C. Lazáro Cárdenas - Punta Prieta	0.00	3	0	327	3.5	72.3	12.8	3.4	1.3	0.1	0.0	0.0	6.6	75.8	12.8	11.4	0.125	0.527	30.395223	-115.875432

9 CARR: San Felipe - Chapala

CLAVE: 02503

RUTA: MEX-005

AÑO: 2016

LUGAR	ESTACION				CLASIFICACION VEHICULAR EN PORCIENTO													COORDENADAS		
	KM	TE	SC	TDPA	M	A	B	C2	C3	T3S2	T3S3	T3S2R4	OTROS	A	B	C	K'	D	LATITUD	LONGITUD
San Felipe	0.00	3	1	1475	1.4	86.6	0.2	9.0	2.1	0.5	0.2	0.0	0.0	88.0	0.2	11.8	0.104	0.503	30.999548	-114.836794
San Felipe	0.00	3	2	1460	1.5	84.7	0.2	10.5	2.3	0.6	0.2	0.0	0.0	86.2	0.2	13.6	0.102	0.503	30.999546	-114.836793
Playa Curbina	75.46	3	0	217	4.8	66.7	0.6	22.3	2.7	1.9	1.0	0.0	0.0	71.5	0.6	27.9	0.171	0.501	30.343214	-114.644286
T. C. Lazáro Cárdenas - Parador Punta Prieta	213.00																			

BAJA CALIFORNIA

10 CARR: Sonoita - Mexicali

CLAVE: 00081

RUTA: MEX-002

AÑO: 2016

LUGAR	ESTACION				CLASIFICACION VEHICULAR EN PORCIENTO										COORDENADAS					
	KM	TE	SC	TDPA	M	A	B	C2	C3	T3S2	T3S3	T3S2R4	OTROS	A	B	C	K'	D	LATITUD	LONGITUD
Sonoita	0.00	3	0	3967	0.8	48.7	8.1	9.5	2.1	20.2	2.9	6.6	1.1	49.5	8.1	42.4	0.061	0.508	31.884934	-112.857296
Los Vidrios	58.75	3	0	3498	0.7	39.5	8.5	6.0	1.6	30.2	3.6	8.9	1.0	40.2	8.5	51.3	0.060	0.507	32.027465	-113.423737
San Luis Río Colorado	191.80	1	0	3884	0.5	48.5	7.7	7.7	1.7	22.8	2.9	7.3	0.9	49.0	7.7	43.3	0.065	0.508	32.453395	-114.682727
San Luis Río Colorado	191.80	3	1	10242	0.8	82.7	2.8	4.9	0.7	5.1	0.9	1.6	0.5	83.5	2.8	13.7	0.070	0.513	32.488654	-114.798317
San Luis Río Colorado	191.80	3	2	9729	0.9	81.1	3.2	5.4	0.7	5.4	1.1	1.7	0.5	82.0	3.2	14.8	0.072	0.513	32.488637	-114.798311
Lim. Edos. Term. Son. Ppia. B.C.	203.69																			
X. C. Mexicali - Algodones	206.78	1	1	9135	0.7	84.5	1.9	4.5	0.8	4.9	1.0	1.4	0.3	85.2	1.9	12.9	0.080	0.502	32.498746	-114.832057
X. C. Mexicali - Algodones	206.78	1	2	9073	0.6	83.1	2.0	5.1	0.8	5.4	1.1	1.6	0.3	83.7	2.0	14.3	0.070	0.502	32.498744	-114.832055
X. C. Mexicali - Algodones	206.78	3	1	7457	0.4	81.6	2.1	6.6	0.7	5.5	1.0	1.6	0.5	82.0	2.1	15.9	0.077	0.502	32.507137	-114.859788
X. C. Mexicali - Algodones	206.78	3	2	7504	0.3	79.6	2.4	7.4	0.8	6.1	1.1	1.8	0.5	79.9	2.4	17.7	0.077	0.502	32.507103	-114.859754
T. Izq. Ejido Hermosillo	214.80	3	1	6805	0.6	77.9	2.6	8.0	0.9	5.9	1.4	1.9	0.8	78.5	2.6	18.9	0.071	0.506	32.527423	-114.928301
T. Izq. Ejido Hermosillo	214.80	3	2	6650	0.5	74.8	3.0	9.5	0.9	6.8	1.6	2.0	0.9	75.3	3.0	21.7	0.075	0.506	32.527426	-114.928303
Ejido Monterrey	228.63	3	1	10789	0.4	78.4	1.2	10.1	0.8	5.6	1.5	1.2	0.8	78.8	1.2	20.0	0.075	0.514	32.551983	-115.087517
Ejido Monterrey	228.63	3	2	10193	0.3	76.1	1.4	11.4	0.9	6.0	1.7	1.4	0.8	76.4	1.4	22.2	0.069	0.514	32.551899	-115.087544
X. C. Mexicali - Algodones	256.47	1	1	13885	0.3	82.6	1.6	9.2	0.9	2.8	1.9	0.5	0.2	82.9	1.6	15.5	0.062	0.502	32.565196	-115.325708
X. C. Mexicali - Algodones	256.47	1	2	13794	0.9	80.7	1.8	9.5	1.0	3.3	2.1	0.5	0.2	81.6	1.8	16.6	0.059	0.502	32.565141	-115.325995
T. C. Mexicali - San Felipe	265.12																			

11 CARR: Tecate - El Sauzal

CLAVE: 02097

RUTA: MEX-003

AÑO: 2016

LUGAR	ESTACION				CLASIFICACION VEHICULAR EN PORCIENTO										COORDENADAS					
	KM	TE	SC	TDPA	M	A	B	C2	C3	T3S2	T3S3	T3S2R4	OTROS	A	B	C	K'	D	LATITUD	LONGITUD
Tecate	0.00	3	0	9872	0.7	84.5	0.7	9.8	0.5	2.4	0.7	0.5	0.2	85.2	0.7	14.1	0.090	0.511	32.539287	-116.627264
T. Der. Valle de Las Palmas	27.80	1	0	4859	0.4	77.0	0.9	12.4	0.8	5.4	1.5	1.1	0.5	77.4	0.9	21.7	0.107	0.528	32.384743	-116.613904
El Tezterazo	48.80	3	0	2849	0.5	80.5	1.1	8.2	1.0	5.7	1.0	1.5	0.5	81.0	1.1	17.9	0.173	0.518	32.278513	-116.524185
T. Izq. San Marcos	63.50	1	0	3668	0.5	77.3	1.2	11.4	0.8	5.6	1.4	1.3	0.5	77.8	1.2	21.0	0.084	0.524	32.197521	-116.489315
El Porvenir Guadalupe	74.80	3	0	4720	0.4	78.6	0.9	12.1	0.7	5.0	0.8	1.0	0.5	79.0	0.9	20.1	0.154	0.525	32.091847	-116.562587
Las Palmas	85.00	1	0	5143	0.8	78.9	1.0	11.0	0.9	4.5	1.3	1.0	0.6	79.7	1.0	19.3	0.150	0.530	32.044894	-116.598393
San Antonio de Las Minas	93.90	1	1	4201	1.2	85.3	0.8	8.8	0.6	1.8	0.8	0.5	0.2	86.5	0.8	12.7	0.151	0.529	31.985854	-116.645921
San Antonio de Las Minas	93.90	1	2	3740	2.2	82.8	0.8	9.7	0.7	2.1	0.9	0.5	0.3	85.0	0.8	14.2	0.149	0.529	31.985789	-116.645797
El Sauzal	104.53	1	1	4433	0.3	83.4	3.6	7.2	0.5	3.1	1.2	0.3	0.4	83.7	3.6	12.7	0.111	0.507	31.910349	-116.694199
El Sauzal	104.53	1	2	4567	0.3	81.9	3.9	7.9	0.7	3.3	1.3	0.3	0.4	82.2	3.9	13.9	0.121	0.507	31.910350	-116.694200

BAJA CALIFORNIA

12 CARR: Tijuana - Ensenada (Libre)

CLAVE: 02099

RUTA: MEX-001

AÑO: 2016

LUGAR	ESTACION				CLASIFICACION VEHICULAR EN PORCIENTO													COORDENADAS		
	KM	TE	SC	TDPA	M	A	B	C2	C3	T3S2	T3S3	T3S2R4	OTROS	A	B	C	K'	D	LATITUD	LONGITUD
Tijuana	0.00																			
X. C. Tijuana - San Miguel (Cuota)	22.00	1	1	24008	0.5	88.9	0.3	3.4	0.8	1.9	3.4	0.3	0.5	89.4	0.3	10.3	0.077	0.509	32.381561	-117.057414
X. C. Tijuana - San Miguel (Cuota)	22.00	1	2	24840	0.4	88.2	0.3	3.7	0.9	2.0	3.7	0.3	0.5	88.6	0.3	11.1	0.064	0.509	32.381587	-117.057295
Rosarito	25.94	1	1	11908	0.8	88.2	0.9	3.9	0.2	1.7	3.3	0.5	0.5	89.0	0.9	10.1	0.080	0.522	32.368401	-117.060494
Rosarito	25.94	1	2	13004	0.7	87.4	0.9	4.4	0.2	1.9	3.5	0.5	0.5	88.1	0.9	11.0	0.073	0.522	32.368401	-117.060494
Rosarito	25.94	3	1	9046	0.8	90.6	0.9	4.8	0.2	1.6	0.9	0.0	0.2	91.4	0.9	7.7	0.105	0.509	32.334602	-117.053127
Rosarito	25.94	3	2	9364	0.7	89.7	1.1	5.4	0.2	1.7	1.0	0.0	0.2	90.4	1.1	8.5	0.095	0.509	32.334629	-117.053115
T. Izq. Autopista	46.12	1	1	4836	5.6	83.1	0.9	5.3	1.0	3.0	0.5	0.2	0.4	88.7	0.9	10.4	0.117	0.504	32.229660	-116.921512
T. Izq. Autopista	46.12	1	2	4764	5.3	82.3	1.0	5.7	1.2	3.4	0.5	0.2	0.4	87.6	1.0	11.4	0.143	0.504	32.229733	-116.921400
Población Plaza Santa María	56.98	1	0	1783	1.7	85.9	0.2	9.9	0.4	1.5	0.2	0.1	0.1	87.6	0.2	12.2	0.181	0.535	32.144071	-116.891965
La Misión	64.98	1	0	2862	1.0	83.6	2.7	6.3	1.1	4.6	0.4	0.1	0.2	84.6	2.7	12.7	0.101	0.507	32.093005	-116.859450
T. Izq. Colonia Guadalupe	82.90	1	0	2191	0.9	89.4	0.5	6.7	0.8	1.4	0.2	0.0	0.1	90.3	0.5	9.2	0.134	0.517	31.989650	-116.746491
Ent. San Miguel	95.80	1	0	1828	1.4	86.7	0.4	8.8	0.6	1.5	0.5	0.0	0.1	88.1	0.4	11.5	0.110	0.504	31.908990	-116.730784
El Sauzal	102.00	3	1	22870	0.8	85.3	1.3	8.1	0.7	2.8	0.5	0.3	0.2	86.1	1.3	12.6	0.093	0.518	31.868846	-116.674568
El Sauzal	102.00	3	2	24539	0.8	83.5	1.5	9.4	0.7	3.1	0.5	0.3	0.2	84.3	1.5	14.2	0.077	0.518	31.868776	-116.674277
Ensenada	110.00																			

13 CARR: El Centinela - La Rumorosa (Cuota)

CLAVE: 02011

RUTA: MEX-002D

AÑO: 2016

LUGAR	ESTACION				CLASIFICACION VEHICULAR EN PORCIENTO													COORDENADAS		
	KM	TE	SC	TDPA	M	A	B	C2	C3	T3S2	T3S3	T3S2R4	OTROS	A	B	C	K'	D	LATITUD	LONGITUD
Ent. El Centinela	20.30																			
Laguna Salada	25.00	1	1	5100	0.4	71.4	3.6	10.0	1.0	9.1	1.3	2.4	0.8	71.8	3.6	24.6	0.121	0.519	32.577001	-115.738233
Laguna Salada	25.00	1	2	4721	0.9	67.1	4.0	11.3	1.2	10.7	1.4	2.6	0.8	68.0	4.0	28.0	0.216	0.519	32.577039	-115.738209
La Rumorosa	67.60	1	1	2493	0.6	74.9	0.6	10.8	1.0	8.9	2.1	0.5	0.6	75.5	0.6	23.9	0.128	0.516	32.550206	-116.044332
La Rumorosa	67.60	1	2	2657	0.7	73.3	0.7	10.7	1.0	10.3	2.0	0.7	0.6	74.0	0.7	25.3	0.251	0.516	32.550328	-116.044202

14 CARR: La Rumorosa - Tecate (Cuota)

CLAVE: 02011

RUTA: MEX-002D

AÑO: 2016

LUGAR	ESTACION				CLASIFICACION VEHICULAR EN PORCIENTO													COORDENADAS		
	KM	TE	SC	TDPA	M	A	B	C2	C3	T3S2	T3S3	T3S2R4	OTROS	A	B	C	K'	D	LATITUD	LONGITUD
La Rumorosa	0.00	3	1	3589	0.9	71.6	5.6	7.7	1.2	7.2	1.2	3.6	1.0	72.5	5.6	21.9	0.101	0.514	32.553833	-116.060183
La Rumorosa	0.00	3	2	3388	0.4	69.6	5.9	8.5	1.4	8.3	1.3	3.6	1.0	70.0	5.9	24.1	0.087	0.514	32.553783	-116.060117
Caseta de Cobro El Hongo	30.56	1	1	3581	1.5	69.3	4.7	9.2	1.3	9.0	0.9	3.3	0.8	70.8	4.7	24.5	0.075	0.526	32.518900	-116.302900

BAJA CALIFORNIA

14 CARR: La Rumorosa - Tecate (Cuota)

CLAVE: 02011

RUTA: MEX-002D

AÑO: 2016

LUGAR	ESTACION				CLASIFICACION VEHICULAR EN PORCIENTO														COORDENADAS	
	KM	TE	SC	TDPA	M	A	B	C2	C3	T3S2	T3S3	T3S2R4	OTROS	A	B	C	K'	D	LATITUD	LONGITUD
Caseta de Cobro El Hongo	30.56	1	2	3977	0.5	67.6	5.2	10.2	1.4	9.4	1.0	3.8	0.9	68.1	5.2	26.7	0.132	0.526	32.518917	-116.302900
Caseta de Cobro El Hongo	30.56	2	1	3477	0.3	72.9	5.1	2.6	1.8	11.8	0.5	4.1	0.9	73.2	5.1	21.7	0.087	0.500	32.521838	-116.319986
Caseta de Cobro El Hongo	30.56	2	2	3477	0.3	72.9	5.1	2.6	1.8	11.8	0.5	4.1	0.9	73.2	5.1	21.7	0.087	0.500	32.521838	-116.319986
Caseta de Cobro El Hongo	30.56	3	1	3924	0.7	75.1	4.9	3.8	1.3	9.4	0.8	3.3	0.7	75.8	4.9	19.3	0.074	0.519	32.523592	-116.329698
Caseta de Cobro El Hongo	30.56	3	2	4240	2.6	71.5	5.4	4.0	1.6	9.9	0.9	3.3	0.8	74.1	5.4	20.5	0.117	0.519	32.523638	-116.329923
T. C. Mexicali -Tijuana (Libre)	55.50																			

15 CARR: Libramiento de Mexicali (Cuota)

CLAVE: 02319

RUTA: MEX-002D

AÑO: 2016

LUGAR	ESTACION				CLASIFICACION VEHICULAR EN PORCIENTO														COORDENADAS	
	KM	TE	SC	TDPA	M	A	B	C2	C3	T3S2	T3S3	T3S2R4	OTROS	A	B	C	K'	D	LATITUD	LONGITUD
T. C. Sonoita - Mexicali	0.00	3	0	2985	0.5	60.2	3.3	7.9	3.0	17.6	2.3	4.5	0.7	60.7	3.3	36.0	0.067	0.522	32.550575	-115.308140
T. C. Mexicali - Tijuana	40.60	1	0	2440	0.2	49.5	3.0	7.8	3.7	23.8	3.8	7.2	1.0	49.7	3.0	47.3	0.061	0.509	32.583771	-115.663203

16 CARR: Libramiento de Tecate (Cuota)

CLAVE: 02082

RUTA: MEX-002D

AÑO: 2016

LUGAR	ESTACION				CLASIFICACION VEHICULAR EN PORCIENTO														COORDENADAS	
	KM	TE	SC	TDPA	M	A	B	C2	C3	T3S2	T3S3	T3S2R4	OTROS	A	B	C	K'	D	LATITUD	LONGITUD
T. C. Mexicali -Tijuana (Libre) Oriente	118.35																			
Caseta de Cobro Tecate	130.50	2	1	2013	0.2	77.3	1.1	3.3	1.2	12.4	1.8	1.6	1.1	77.5	1.1	21.4	0.091	0.500	32.545760	-116.852122
Caseta de Cobro Tecate	130.50	2	2	2013	0.2	77.3	1.1	3.3	1.2	12.4	1.8	1.6	1.1	77.5	1.1	21.4	0.091	0.500	32.545760	-116.852122
T. C. Mexicali -Tijuana (Libre) Poniente	130.60																			

17 CARR: Tecate - Tijuana (Cuota)

CLAVE: 02011

RUTA: MEX-002D

AÑO: 2016

LUGAR	ESTACION				CLASIFICACION VEHICULAR EN PORCIENTO														COORDENADAS	
	KM	TE	SC	TDPA	M	A	B	C2	C3	T3S2	T3S3	T3S2R4	OTROS	A	B	C	K'	D	LATITUD	LONGITUD
T. C. Mexicali -Tijuana (Libre)	130.60																			
Caseta de Cobro Tijuana	147.60	1	1	3998	0.5	74.7	4.3	6.4	1.4	9.1	1.0	2.0	0.6	75.2	4.3	20.5	0.088	0.548	32.557870	-116.812068
Caseta de Cobro Tijuana	147.60	1	2	3298	0.7	70.4	4.5	7.5	1.7	11.2	1.2	2.1	0.7	71.1	4.5	24.4	0.084	0.548	32.557828	-116.812085
Caseta de Cobro Tijuana	147.60	2	1	3026	0.3	73.2	2.7	5.5	2.0	12.0	0.4	3.2	0.7	73.5	2.7	23.8	0.091	0.500	32.545760	-116.852122
Caseta de Cobro Tijuana	147.60	2	2	3026	0.3	73.2	2.7	5.5	2.0	12.0	0.4	3.2	0.7	73.5	2.7	23.8	0.091	0.500	32.545760	-116.852122
Caseta de Cobro Tijuana	147.60	3	1	12404	0.9	81.1	2.8	5.8	1.3	4.7	1.3	1.2	0.9	82.0	2.8	15.2	0.127	0.528	32.542293	-116.858074
Caseta de Cobro Tijuana	147.60	3	2	13892	0.7	79.6	3.2	6.4	1.3	5.2	1.4	1.2	1.0	80.3	3.2	16.5	0.128	0.528	32.542360	-116.858076

BAJA CALIFORNIA

17 CARR: Tecate - Tijuana (Cuota)

CLAVE: 02011

RUTA: MEX-002D

AÑO: 2016

LUGAR	ESTACION	CLASIFICACION VEHICULAR EN PORCIENTO													COORDENADAS							
		KM	TE	SC	TDPA	M	A	B	C2	C3	T3S2	T3S3	T3S2R4	OTROS	A	B	C	K'	D	LATITUD	LONGITUD	
Termina Autopista Principia Tijuana	148.15																					

18 CARR: Tijuana - Ensenada (Cuota)

CLAVE: 02100

RUTA: MEX-001D

AÑO: 2016

LUGAR	ESTACION	CLASIFICACION VEHICULAR EN PORCIENTO													COORDENADAS							
		KM	TE	SC	TDPA	M	A	B	C2	C3	T3S2	T3S3	T3S2R4	OTROS	A	B	C	K'	D	LATITUD	LONGITUD	
Tijuana	0.00																					
T. Der. Playas de Tijuana	7.50	3	1	7526	0.4	90.7	0.5	7.5	0.3	0.5	0.1	0.0	0.0	91.1	0.5	8.4	0.098	0.506	32.528907	-117.108256		
T. Der. Playas de Tijuana	7.50	3	2	7717	0.8	89.4	0.5	8.4	0.3	0.5	0.1	0.0	0.0	90.2	0.5	9.3	0.151	0.506	32.528917	-117.108233		
Caseta de Cobro Playas de Tijuana	9.70	2	1	7111	1.0	97.2	0.8	0.4	0.2	0.4	0.0	0.0	0.0	98.2	0.8	1.0	0.100	0.500	32.514030	-117.109512		
Caseta de Cobro Playas de Tijuana	9.70	2	2	7111	1.0	97.2	0.8	0.4	0.2	0.4	0.0	0.0	0.0	98.2	0.8	1.0	0.100	0.500	32.514030	-117.109512		
X. C. Tijuana - Ensenada	29.50	1	1	8678	0.9	92.2	0.5	5.6	0.3	0.3	0.2	0.0	0.0	93.1	0.5	6.4	0.113	0.502	32.380983	-117.057767		
X. C. Tijuana - Ensenada	29.50	1	2	8608	0.9	91.4	0.5	6.4	0.3	0.3	0.2	0.0	0.0	92.3	0.5	7.2	0.107	0.502	32.380980	-117.057764		
X. C. Tijuana - Ensenada	29.50	3	1	20964	0.0	90.9	0.6	5.5	0.3	1.1	1.0	0.2	0.4	90.9	0.6	8.5	0.080	0.515	32.369393	-117.057581		
X. C. Tijuana - Ensenada	29.50	3	2	19744	0.6	89.0	0.7	6.2	0.2	1.6	1.1	0.2	0.4	89.6	0.7	9.7	0.098	0.515	32.369318	-117.057485		
Caseta de Cobro Rosarito	35.43	2	1	5222	0.6	89.7	2.0	1.4	0.8	4.5	0.2	0.6	0.2	90.3	2.0	7.7	0.100	0.500	32.311054	-117.044312		
Caseta de Cobro Rosarito	35.43	2	2	5222	0.6	89.7	2.0	1.4	0.8	4.5	0.2	0.6	0.2	90.3	2.0	7.7	0.100	0.500	32.311054	-117.044312		
T. Der. La Misión	66.44	3	1	7880	0.3	81.7	1.4	10.2	0.6	4.2	0.5	0.6	0.5	82.0	1.4	16.6	0.144	0.510	32.116328	-116.884046		
T. Der. La Misión	66.44	3	2	7557	0.3	80.0	1.6	11.3	0.6	4.6	0.5	0.6	0.5	80.3	1.6	18.1	0.182	0.510	32.116338	-116.884151		
Caseta de Cobro Ensenada	98.60	2	1	6725	0.4	86.4	2.1	2.1	1.4	6.0	0.3	0.9	0.4	86.8	2.1	11.1	0.100	0.500	31.903093	-116.732719		
Caseta de Cobro Ensenada	98.60	2	2	6725	0.4	86.4	2.1	2.1	1.4	6.0	0.3	0.9	0.4	86.8	2.1	11.1	0.100	0.500	31.903093	-116.732719		
T. C. Tijuana - Ensenada (Libre)	98.80																					

19 CARR: Mexicali - Tijuana

CLAVE: 02082

RUTA: MEX-002D-MEX

AÑO: 2016

LUGAR	ESTACION	CLASIFICACION VEHICULAR EN PORCIENTO													COORDENADAS							
		KM	TE	SC	TDPA	M	A	B	C2	C3	T3S2	T3S3	T3S2R4	OTROS	A	B	C	K'	D	LATITUD	LONGITUD	
Mexicali	0.00																					
Colonia Progreso	7.80	3	1	6222	0.6	81.2	3.5	1.0	3.4	5.4	1.3	1.8	1.8	81.8	3.5	14.7	0.090	0.506	32.584503	-115.593069		
Colonia Progreso	7.80	3	2	6361	0.6	79.9	4.0	1.2	3.7	5.6	1.3	1.8	1.9	80.5	4.0	15.5	0.087	0.506	32.584470	-115.593098		
T. Der. Estación de Microondas	69.62	3	0	3122	0.8	72.9	1.3	7.5	1.1	12.5	2.9	0.4	0.6	73.7	1.3	25.0	0.089	0.518	32.510548	-116.089580		
Agua Hechicera	87.00	1	0	2896	0.6	65.7	1.5	10.2	1.3	16.0	3.4	0.4	0.9	66.3	1.5	32.2	0.075	0.508	32.494743	-116.219877		
El Encinal	112.15	1	0	4707	0.7	67.3	1.2	13.4	1.3	12.1	2.7	0.4	0.9	68.0	1.2	30.8	0.071	0.502	32.557399	-116.438971		
Tecate	132.00	1	1	6915	0.6	82.1	1.2	10.1	0.7	3.5	0.8	0.5	0.5	82.7	1.2	16.1	0.072	0.505	32.563692	-116.580014		

BAJA CALIFORNIA

19 CARR: Mexicali - Tijuana

CLAVE: 02082

RUTA: MEX-002D-MEX

AÑO: 2016

LUGAR	ESTACION				CLASIFICACION VEHICULAR EN PORCIENTO													COORDENADAS		
	KM	TE	SC	TDPA	M	A	B	C2	C3	T3S2	T3S3	T3S2R4	OTROS	A	B	C	K'	D	LATITUD	LONGITUD
Tecate	132.00	1	2	6775	0.7	80.2	1.4	11.1	0.9	3.9	0.8	0.5	0.5	80.9	1.4	17.7	0.074	0.505	32.563884	-116.580150
Tecate	132.00	3	1	11142	0.9	85.9	1.2	6.4	1.0	2.9	0.7	0.4	0.6	86.8	1.2	12.0	0.064	0.505	32.546660	-116.674137
Tecate	132.00	3	2	11380	0.9	86.3	1.1	6.5	0.9	2.6	0.6	0.5	0.6	87.2	1.1	11.7	0.066	0.505	32.546644	-116.674122
Presa Abelardo L. Rodríguez	165.00	3	0	5608	1.1	80.5	2.2	8.8	0.6	4.6	1.0	0.3	0.9	81.6	2.2	16.2	0.080	0.505	32.455116	-116.913745
Tijuana	182.60																			

20 CARR: Algodones - Ent. Islas Agrarias Grupo B

CLAVE: 02006

RUTA: BC-008

AÑO: 2016

LUGAR	ESTACION				CLASIFICACION VEHICULAR EN PORCIENTO													COORDENADAS		
	KM	TE	SC	TDPA	M	A	B	C2	C3	T3S2	T3S3	T3S2R4	OTROS	A	B	C	K'	D	LATITUD	LONGITUD
Algodones	0.00	3	0	3817	0.5	87.4	0.2	9.9	0.3	1.5	0.1	0.0	0.1	87.9	0.2	11.9	0.089	0.513	32.702128	-114.742832
T. Izq. Cd. Morelos	14.00	1	0	3779	0.2	85.7	0.3	11.4	0.3	1.8	0.2	0.0	0.1	85.9	0.3	13.8	0.082	0.513	32.665992	-114.847937
Mérida	20.30	3	0	2003	0.2	86.8	0.3	10.7	0.4	1.1	0.4	0.0	0.1	87.0	0.3	12.7	0.089	0.501	32.664524	-114.925181
T. Izq. Ejido Lazáro Cárdenas	31.50	1	0	2901	0.3	85.6	0.3	11.4	0.3	1.6	0.4	0.0	0.1	85.9	0.3	13.8	0.077	0.511	32.615795	-115.009989
Islas Agrarias Grupo B	55.50	1	0	4107	0.7	90.2	2.1	4.5	0.8	1.0	0.4	0.0	0.3	90.9	2.1	7.0	0.074	0.504	32.615883	-115.261591

21 CARR: Corredor Tijuana 2000

CLAVE: 02006

RUTA: BC

AÑO: 2016

LUGAR	ESTACION				CLASIFICACION VEHICULAR EN PORCIENTO													COORDENADAS		
	KM	TE	SC	TDPA	M	A	B	C2	C3	T3S2	T3S3	T3S2R4	OTROS	A	B	C	K'	D	LATITUD	LONGITUD
T. C. Mexicali - Tijuana (Cuota)	0.00	3	1	15705	0.6	84.3	1.7	6.5	1.3	3.0	1.2	0.4	1.0	84.9	1.7	13.4	0.123	0.516	32.533758	-116.857018
T. C. Mexicali - Tijuana (Cuota)	0.00	3	2	14712	0.7	81.9	1.8	7.9	1.5	3.4	1.3	0.4	1.1	82.6	1.8	15.6	0.141	0.516	32.533844	-116.856899
T. C. Mexicali - Tijuana	11.00	1	1	19948	1.0	85.8	1.3	5.0	0.8	3.0	1.8	0.5	0.8	86.8	1.3	11.9	0.067	0.534	32.459133	-116.837250
T. C. Mexicali - Tijuana	11.00	1	2	22845	0.8	84.6	1.5	5.6	0.8	3.4	1.9	0.5	0.9	85.4	1.5	13.1	0.069	0.534	32.458717	-116.837333
T. C. Tijuana - San Miguel (Cuota)	40.00	1	1	3753	0.7	83.8	0.9	4.9	1.9	5.1	0.9	1.1	0.7	84.5	0.9	14.6	0.177	0.501	32.293204	-117.007983
T. C. Tijuana - San Miguel (Cuota)	40.00	1	2	3739	0.9	81.6	1.1	5.8	2.2	5.6	1.0	1.1	0.7	82.5	1.1	16.4	0.251	0.501	32.293167	-117.007900

22 CARR: Ejido Benito Juárez - Ejido Chiapas

CLAVE: 02501

RUTA: BC-061

AÑO: 2016

LUGAR	ESTACION				CLASIFICACION VEHICULAR EN PORCIENTO													COORDENADAS		
	KM	TE	SC	TDPA	M	A	B	C2	C3	T3S2	T3S3	T3S2R4	OTROS	A	B	C	K'	D	LATITUD	LONGITUD
Ejido Benito Juárez	0.00	3	0	3275	0.8	96.0	0.1	1.5	0.8	0.0	0.0	0.0	0.8	96.8	0.1	3.1	0.118	0.503	32.559025	-114.992992
Ejido México	7.00	1	0	1207	1.4	84.5	1.1	11.5	0.2	1.1	0.2	0.0	0.0	85.9	1.1	13.0	0.093	0.511	32.519752	-114.980116
Ejido Chiapas	10.56	1	0	1131	1.4	84.5	1.0	11.7	0.2	1.0	0.2	0.0	0.0	85.9	1.0	13.1	0.103	0.505	32.499781	-114.964875

BAJA CALIFORNIA

23 CARR: Ejido Monterrey - Mazón

CLAVE: 02004

RUTA: BC-003

AÑO: 2016

LUGAR	ESTACION				CLASIFICACION VEHICULAR EN PORCIENTO													COORDENADAS		
	KM	TE	SC	TDPA	M	A	B	C2	C3	T3S2	T3S3	T3S2R4	OTROS	A	B	C	K'	D	LATITUD	LONGITUD
T. C. Sonoita - Mexicali	0.00	3	0	5095	3.2	85.5	1.1	6.5	0.8	2.0	0.6	0.1	0.2	88.7	1.1	10.2	0.091	0.503	32.544050	-115.075800
X. C. Mexicali - Algodones	15.16	1	0	5030	0.9	84.1	1.6	8.8	1.0	2.4	0.4	0.3	0.5	85.0	1.6	13.4	0.083	0.504	32.421383	-115.067367
X. C. Mexicali - Algodones	15.16	3	0	6959	0.6	84.9	0.8	10.1	0.7	1.4	0.6	0.2	0.7	85.5	0.8	13.7	0.082	0.506	32.416834	-115.067123
Guadalupe Victoria	30.47	1	0	9442	0.5	84.0	0.7	13.2	0.4	1.0	0.2	0.0	0.0	84.5	0.7	14.8	0.090	0.516	32.294959	-115.088974
Mazón	35.00	1	0	7224	0.3	88.8	0.3	5.5	0.2	2.3	1.3	0.2	1.1	89.1	0.3	10.6	0.088	0.572	32.242674	-115.110973

24 CARR: El Faro - Estación Coahuila

CLAVE: 02013

RUTA: BC-004

AÑO: 2016

LUGAR	ESTACION				CLASIFICACION VEHICULAR EN PORCIENTO													COORDENADAS		
	KM	TE	SC	TDPA	M	A	B	C2	C3	T3S2	T3S3	T3S2R4	OTROS	A	B	C	K'	D	LATITUD	LONGITUD
T. C. Mexicali - San Felipe	0.00	3	0	1668	0.4	79.7	1.3	10.0	1.8	3.8	1.7	0.5	0.8	80.1	1.3	18.6	0.074	0.506	32.273423	-115.316436
X. C. Mexicali - Estación Coahuila	16.30	1	0	1707	0.4	77.9	1.3	11.0	1.9	4.3	2.0	0.5	0.7	78.3	1.3	20.4	0.074	0.506	32.239555	-115.179353
X. C. Mexicali - Estación Coahuila	16.30	3	0	7297	0.6	83.5	0.8	8.5	0.5	4.7	0.7	0.2	0.5	84.1	0.8	15.1	0.074	0.502	32.239388	-115.157209
T. Izq. Carr. Ejido Monterrey - Mazón	26.70	3	0	5045	0.4	83.0	0.8	9.0	0.8	4.3	0.9	0.1	0.7	83.4	0.8	15.8	0.073	0.503	32.239443	-115.106354
Francisco Murguía	30.00	3	0	4096	0.5	82.4	1.0	11.1	0.9	2.6	1.0	0.2	0.3	82.9	1.0	16.1	0.078	0.500	32.239692	-115.061707
Estación Coahuila	34.50	1	0	5915	0.4	82.9	1.1	10.1	0.7	3.5	0.8	0.1	0.4	83.3	1.1	15.6	0.066	0.504	32.209001	-115.013979

25 CARR: Ent. Santa Rosa - Ent. Pachuca

CLAVE: 02015

RUTA: BC-006

AÑO: 2016

LUGAR	ESTACION				CLASIFICACION VEHICULAR EN PORCIENTO													COORDENADAS		
	KM	TE	SC	TDPA	M	A	B	C2	C3	T3S2	T3S3	T3S2R4	OTROS	A	B	C	K'	D	LATITUD	LONGITUD
T. C. Sonoita - Mexicali	0.00	3	0	7028	0.5	86.5	0.6	8.6	0.5	2.0	0.5	0.3	0.5	87.0	0.6	12.4	0.068	0.504	32.561633	-115.014500
Paredones	10.90	3	0	6249	0.3	86.3	1.0	9.1	0.2	2.6	0.2	0.0	0.3	86.6	1.0	12.4	0.082	0.501	32.610443	-114.921603
Cd. Morelos	18.00	3	0	3436	1.0	87.1	0.4	7.8	0.2	2.9	0.3	0.0	0.3	88.1	0.4	11.5	0.072	0.514	32.638370	-114.836976
T. C. Mexicali - Algodones	23.22																			

26 CARR: La Puerta - T. C. (Mexicali - Estación Coahuila)

CLAVE: 02502

RUTA: BC-010

AÑO: 2016

LUGAR	ESTACION				CLASIFICACION VEHICULAR EN PORCIENTO													COORDENADAS		
	KM	TE	SC	TDPA	M	A	B	C2	C3	T3S2	T3S3	T3S2R4	OTROS	A	B	C	K'	D	LATITUD	LONGITUD
T. C. Mexicali - San Felipe	0.00																			
Zakamoto	4.60	1	0	2289	0.3	86.1	1.1	9.4	0.6	1.5	0.5	0.2	0.3	86.4	1.1	12.5	0.083	0.507	32.325601	-115.294823
Nayarit	9.00	3	0	3092	0.4	92.9	0.2	5.0	0.3	0.7	0.3	0.1	0.1	93.3	0.2	6.5	0.099	0.510	32.313219	-115.229415
T. C. Mexicali - Estación Coahuila	15.00																			

BAJA CALIFORNIA

27 CARR: Mexicali - Algodones

CLAVE: 02012

RUTA: BC-002

AÑO: 2016

LUGAR	ESTACION				CLASIFICACION VEHICULAR EN PORCIENTO													COORDENADAS			
	KM	TE	SC	TDPA	M	A	B	C2	C3	T3S2	T3S3	T3S2R4	OTROS	A	B	C	K'	D	LATITUD	LONGITUD	
T. C. Mexicali - San Felipe	0.00																				
Ejido Puebla	12.00	3	0	7666	1.0	76.0	2.5	9.2	2.5	5.5	1.9	0.5	0.9	77.0	2.5	20.5	0.077	0.504	32.554691	-115.360944	
T. C. Geotérmica - Estación Delta	31.50	1	0	5125	0.4	83.9	1.1	10.4	0.8	2.5	0.5	0.1	0.3	84.3	1.1	14.6	0.075	0.502	32.425186	-115.262598	
X. C. Mexicali - Estación Coahuila	37.70	1	0	4108	0.3	85.8	1.3	9.1	0.7	1.8	0.7	0.1	0.2	86.1	1.3	12.6	0.068	0.508	32.419119	-115.200128	
X. C. Mexicali - Estación Coahuila	37.70	3	0	5370	0.3	83.1	0.9	11.0	0.7	3.0	0.4	0.1	0.5	83.4	0.9	15.7	0.078	0.503	32.419050	-115.172233	
X. C. Ejido Monterrey - Mazón	49.65	1	0	4459	0.4	78.2	1.5	14.9	0.8	3.3	0.4	0.1	0.4	78.6	1.5	19.9	0.087	0.510	32.418467	-115.070128	
X. C. Ejido Monterrey - Mazón	49.65	3	0	2210	1.0	75.0	3.4	16.2	0.7	2.5	0.5	0.3	0.4	76.0	3.4	20.6	0.064	0.513	32.418466	-115.063770	
T. Izq. Tres de Marzo	60.50	1	0	1067	0.9	90.7	0.6	5.6	0.5	1.3	0.3	0.1	0.0	91.6	0.6	7.8	0.082	0.514	32.463800	-114.948750	
X. C. Sonoita - Mexicali	72.00	1	0	1282	0.8	82.9	0.5	13.5	0.2	1.7	0.2	0.1	0.1	83.7	0.5	15.8	0.147	0.507	32.504353	-114.848725	
X. C. Sonoita - Mexicali	72.00	3	0	4002	0.7	89.5	0.5	6.1	0.5	1.7	0.3	0.2	0.5	90.2	0.5	9.3	0.078	0.501	32.515108	-114.841353	
Pachuca	83.00	1	0	3494	0.5	89.1	0.3	7.3	0.4	1.9	0.2	0.1	0.2	89.6	0.3	10.1	0.082	0.510	32.599306	-114.829942	
Algodones	94.46	1	0	3206	0.4	91.2	0.2	6.7	0.2	1.0	0.1	0.1	0.1	91.6	0.2	8.2	0.097	0.511	32.697773	-114.733806	

28 CARR: Mexicali - Estación Coahuila

CLAVE: 02016

RUTA: BC-001

AÑO: 2016

LUGAR	ESTACION				CLASIFICACION VEHICULAR EN PORCIENTO													COORDENADAS		
	KM	TE	SC	TDPA	M	A	B	C2	C3	T3S2	T3S3	T3S2R4	OTROS	A	B	C	K'	D	LATITUD	LONGITUD
Mexicali	0.00	3	1	16082	1.6	84.3	0.3	6.0	2.0	3.6	0.7	0.8	0.7	85.9	0.3	13.8	0.075	0.509	32.652972	-115.390114
Mexicali	0.00	3	2	15499	1.8	82.6	0.3	6.5	2.4	4.1	0.7	0.9	0.7	84.4	0.3	15.3	0.074	0.509	32.653146	-115.389739
T. Izq. Aeropuerto	11.30	1	1	9866	0.7	84.5	1.4	6.6	2.1	3.3	1.1	0.1	0.2	85.2	1.4	13.4	0.083	0.510	32.652941	-115.366171
T. Izq. Aeropuerto	11.30	1	2	10287	0.8	82.5	1.6	7.3	2.3	3.9	1.3	0.1	0.2	83.3	1.6	15.1	0.089	0.510	32.652941	-115.366171
Islas Agrarias Grupo a	14.10	1	0	11119	1.0	83.8	0.4	9.7	0.4	4.0	0.3	0.2	0.2	84.8	0.4	14.8	0.078	0.511	32.614099	-115.340403
X. C. Sonoita - Mexicali	30.79	1	0	4157	0.3	90.1	1.3	5.1	0.9	1.7	0.2	0.1	0.3	90.4	1.3	8.3	0.082	0.531	32.557967	-115.214933
X. C. Sonoita - Mexicali	30.79	3	0	5711	0.4	86.8	1.0	6.5	0.8	3.1	0.5	0.4	0.5	87.2	1.0	11.8	0.077	0.504	32.549567	-115.215033
Ejido Nuevo León	46.83	1	0	5745	0.3	83.9	0.6	10.4	0.6	3.0	0.5	0.2	0.5	84.2	0.6	15.2	0.072	0.503	32.423031	-115.192419
Ejido Nuevo León	46.83	3	0	6836	0.3	82.8	0.4	10.5	0.5	4.2	0.5	0.2	0.6	83.1	0.4	16.5	0.064	0.504	32.404915	-115.194765
T. Der. La Puerta	60.26	1	0	2334	0.6	82.8	0.9	8.4	1.4	3.8	1.3	0.2	0.6	83.4	0.9	15.7	0.110	0.525	32.315770	-115.189552
X. C. El Faro - Estación Coahuila	71.30	1	0	1875	1.9	82.3	0.6	11.8	0.5	2.1	0.4	0.0	0.4	84.2	0.6	15.2	0.118	0.504	32.240817	-115.167507
T. Der. Leona Vicario	80.50	1	0	512	0.5	84.4	0.5	11.4	1.5	0.9	0.0	0.0	0.8	84.9	0.5	14.6	0.096	0.505	32.172558	-115.167501
Estación Coahuila	96.65	1	0	1151	1.3	84.6	2.7	9.6	0.8	0.8	0.2	0.0	0.0	85.9	2.7	11.4	0.093	0.501	32.184837	-115.013624

BAJA CALIFORNIA

29 CARR: Mexicali - Progreso

CLAVE: 02507

RUTA: BC-005

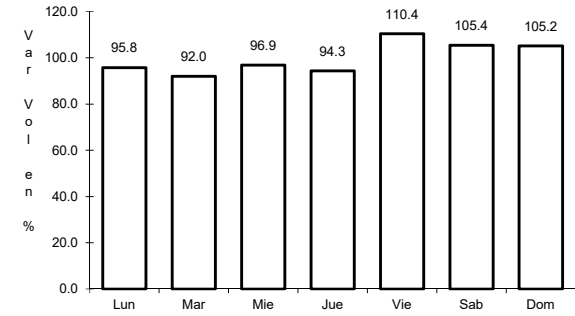
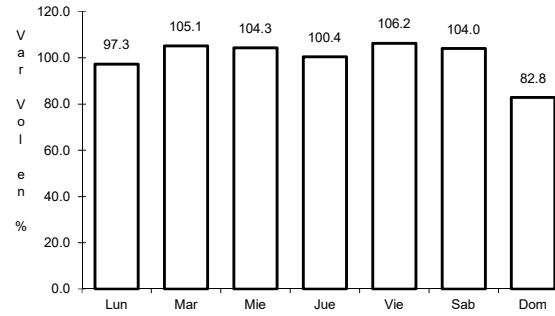
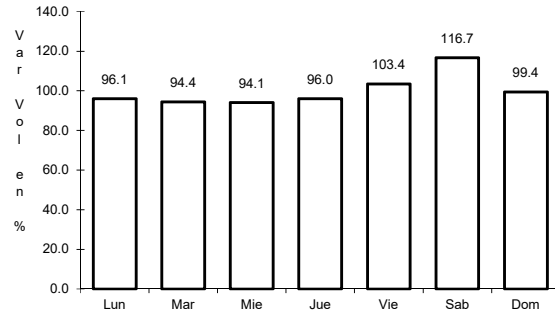
AÑO: 2016

L U G A R	E S T A C I O N				C L A S I F I C A C I O N V E H I C U L A R E N P O R C I E N T O													C O O R D E N A D A S		
	KM	TE	SC	TDPA	M	A	B	C2	C3	T3S2	T3S3	T3S2R4	OTROS	A	B	C	K'	D	LATITUD	LONGITUD
T. C. Mexicali - Tijuana	0.00																			
Progreso	15.30	1	0	5338	1.9	79.1	2.0	11.5	0.9	2.6	1.0	0.4	0.6	81.0	2.0	17.0	0.070	0.506	32.600761	-115.573671

1 CARR: Ensenada - El Chinero

CLAVE: 02009

RUTA: MEX-003



Km: 0.00 Tipo: 3 Sent: 0

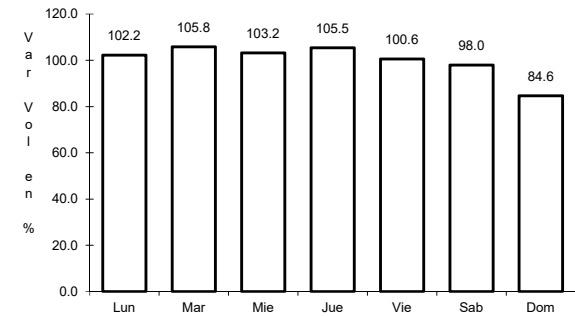
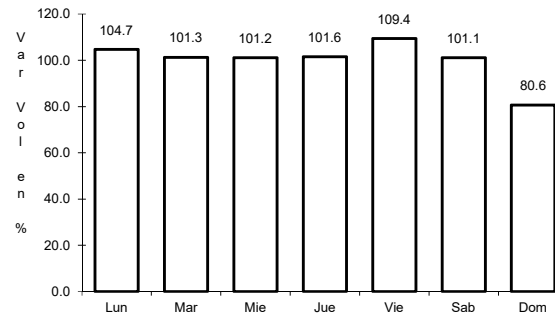
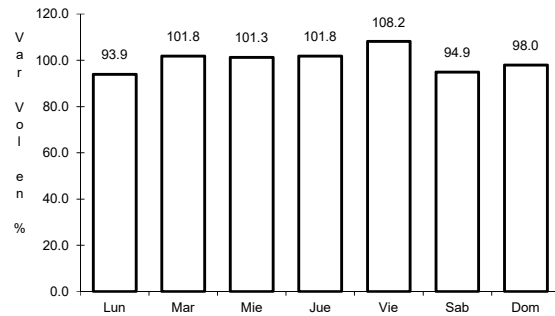
Km: 93.00 Tipo: 3 Sent: 0

Km: 196.00 Tipo: 1 Sent: 0

2 CARR: Ensenada - Lázaro Cárdenas

CLAVE: 02098

RUTA: MEX-001



Km: 0.00 Tipo: 3 Sent: 1

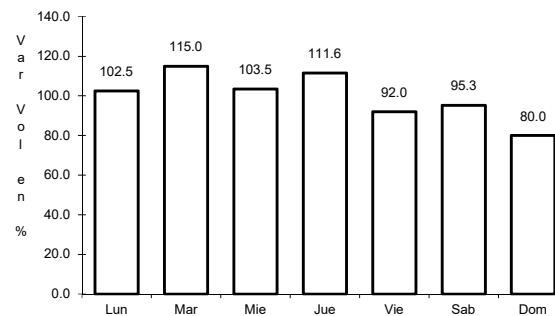
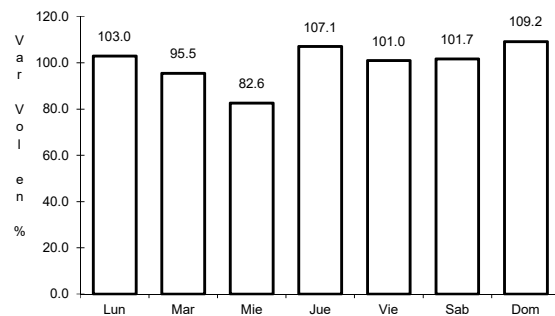
Km: 0.00 Tipo: 3 Sent: 2

Km: 193.00 Tipo: 1 Sent: 0

3 CARR: Ent. Punta Prieta - Bahía de Los Ángeles

CLAVE: 02322

RUTA: MEX-001



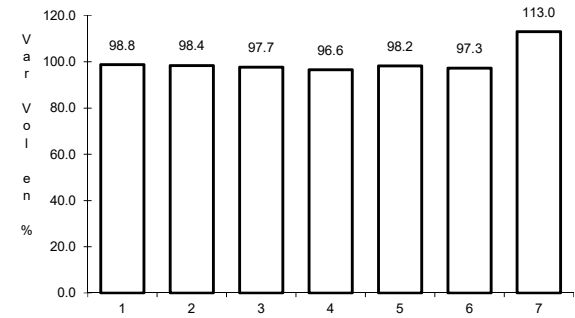
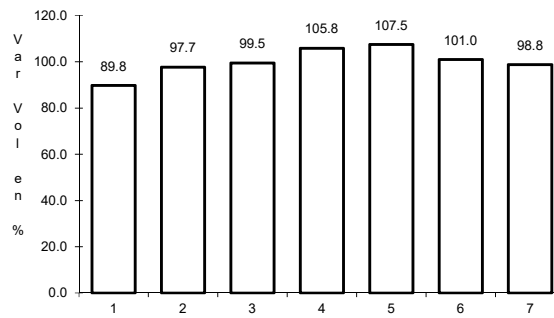
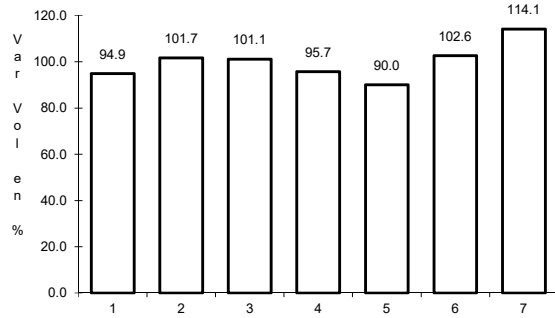
Km: 0.00 Tipo: 3 Sent: 0

Km: 68.00 Tipo: 1 Sent: 0

4 CARR: Ent. Punta Prieta - Guerrero Negro

CLAVE: 00321

RUTA: MEX-001



Km: 0.00 Tipo: 3 Sent: 0

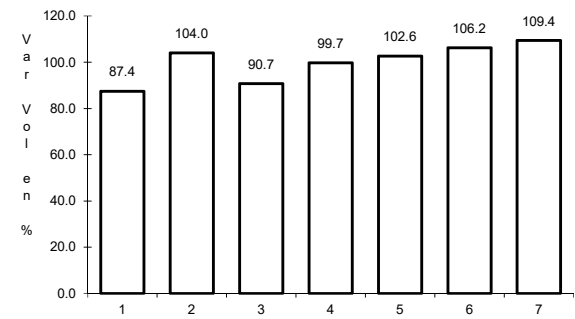
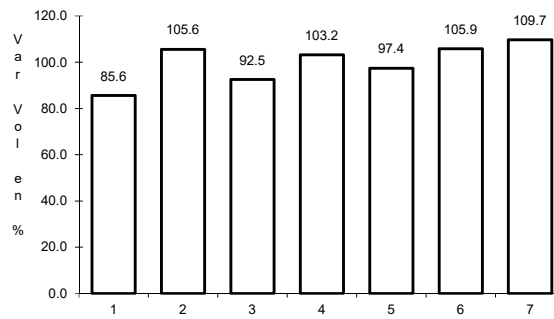
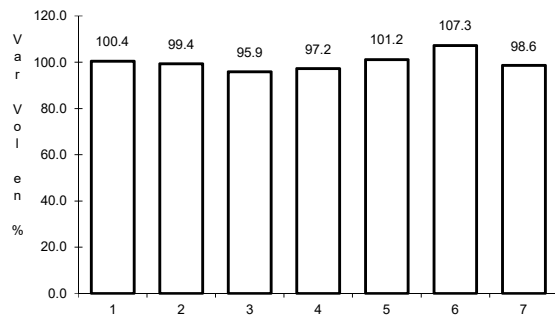
Km: 70.10 Tipo: 3 Sent: 0

Km: 130.00 Tipo: 1 Sent: 0

5 CARR: Lázaro Cárdenas - Ent. Punta Prieta

CLAVE: 02319

RUTA: MEX-001



Km: 0.00 Tipo: 3 Sent: 0

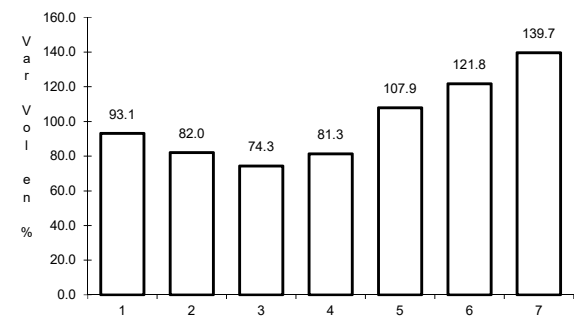
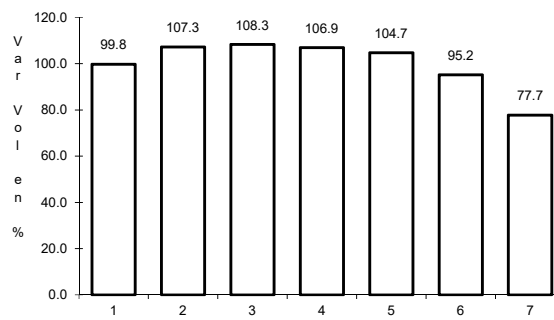
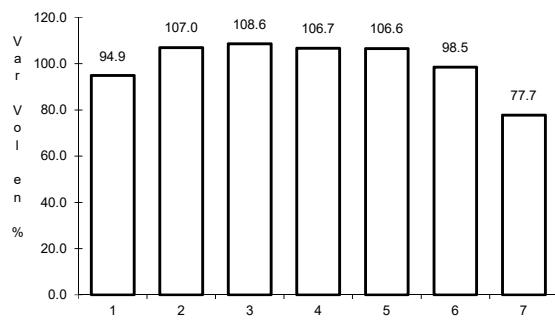
Km: 140.00 Tipo: 1 Sent: 0

Km: 275.66 Tipo: 1 Sent: 0

6 CARR: Mexicali - San Felipe

CLAVE: 02096

RUTA: MEX-005



Km: 0.00 Tipo: 3 Sent: 1

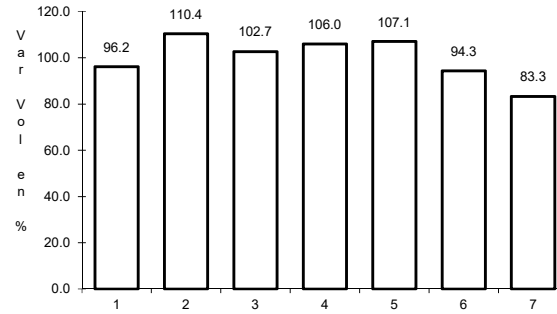
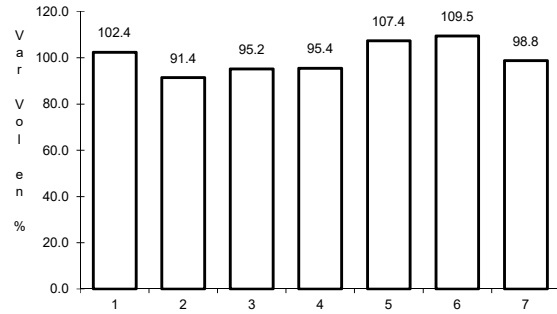
Km: 0.00 Tipo: 3 Sent: 2

Km: 141.00 Tipo: 1 Sent: 0

7 CARR: Ramal a Aeropuerto de Mexicali

CLAVE: 02321

RUTA: MEX-002



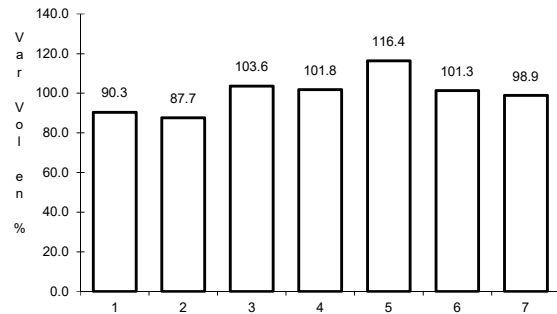
Km: 0.00 Tipo: 3 Sent: 0

Km: 10.00 Tipo: 1 Sent: 0

8 CARR: Ramal a Venustiano Carranza

CLAVE: 02506

RUTA: MEX-001

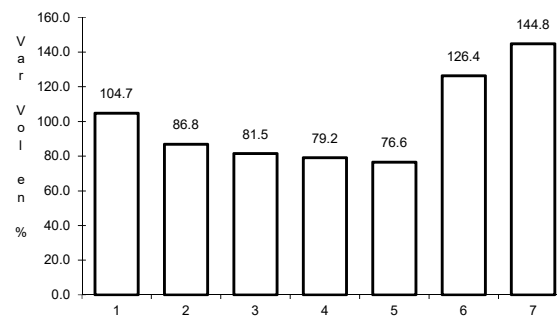
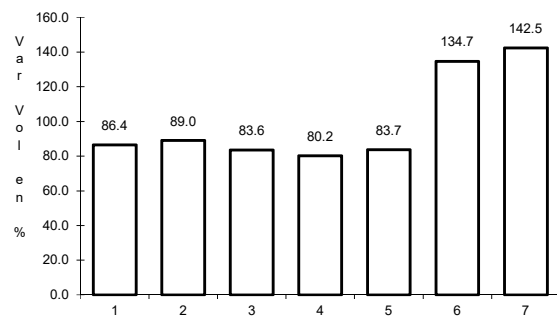


Km: 0.00 Tipo: 3 Sent: 0

9 CARR: San Felipe - Chapala

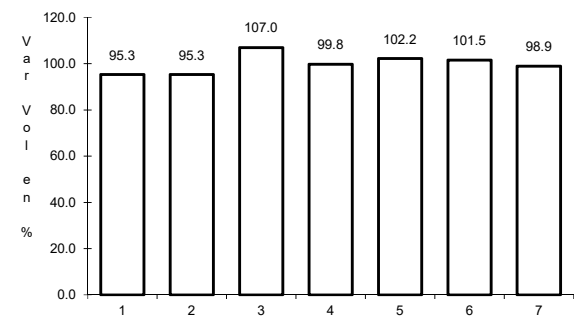
CLAVE: 02503

RUTA: MEX-005



Km: 0.00 Tipo: 3 Sent: 1

Km: 0.00 Tipo: 3 Sent: 2

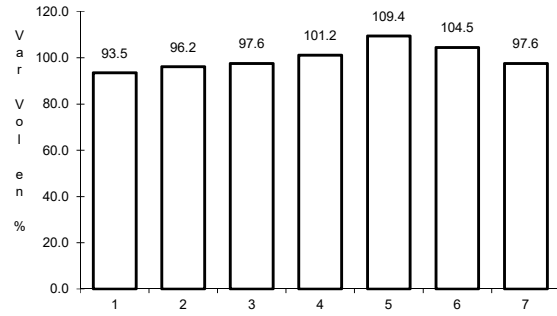


Km: 75.46 Tipo: 3 Sent: 0

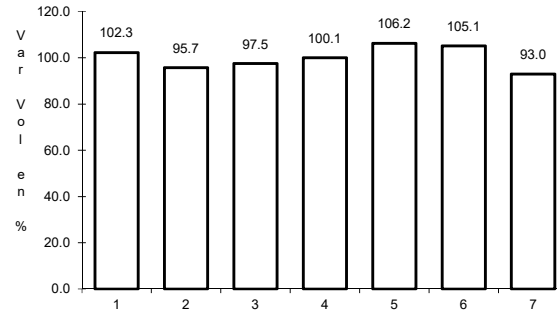
10 CARR: Sonoita - Mexicali

CLAVE: 00081

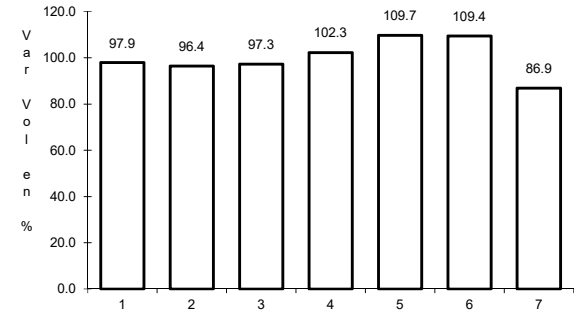
RUTA: MEX-002



Km: 0.00 Tipo: 3 Sent: 0



Km: 256.47 Tipo: 1 Sent: 1

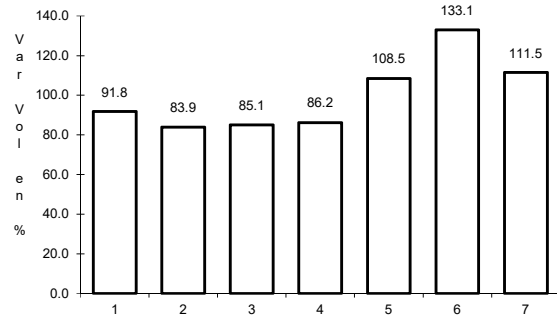


Km: 256.47 Tipo: 1 Sent: 2

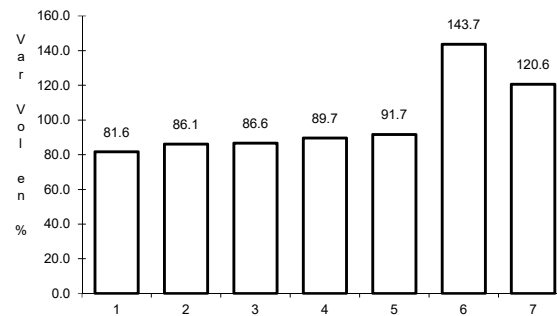
11 CARR: Tecate - El Sauzal

CLAVE: 02097

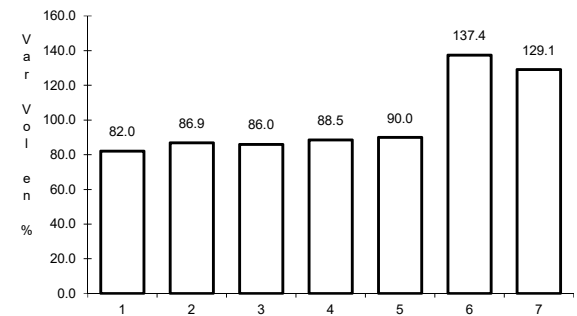
RUTA: MEX-003



Km: 0.00 Tipo: 3 Sent: 0



Km: 104.53 Tipo: 1 Sent: 1

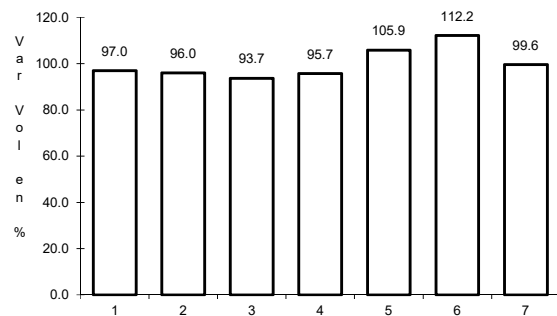


Km: 104.53 Tipo: 1 Sent: 2

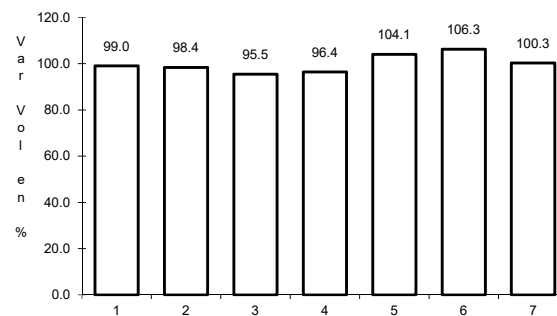
12 CARR: Tijuana - Ensenada (Libre)

CLAVE: 02099

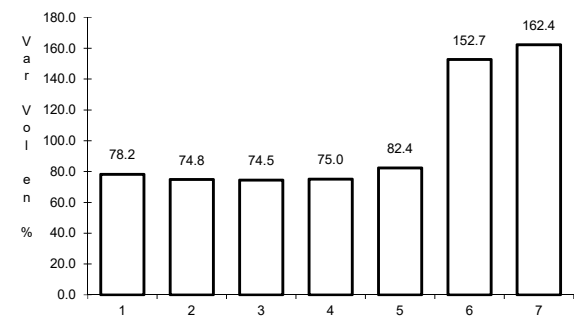
RUTA: MEX-001



Km: 22.00 Tipo: 1 Sent: 1



Km: 22.00 Tipo: 1 Sent: 2

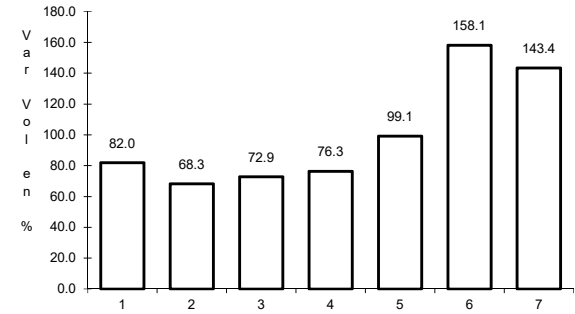
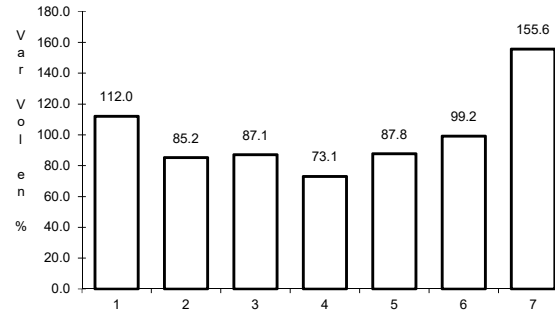
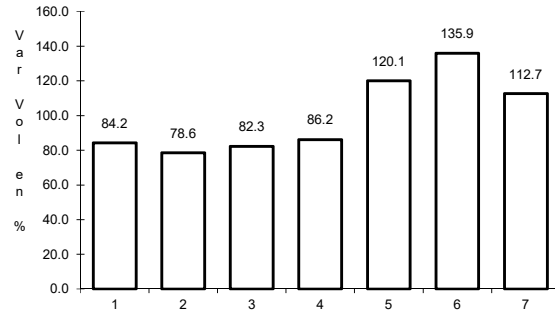


Km: 56.98 Tipo: 1 Sent: 0

13 CARR: El Centinela - La Rumorosa (Cuota)

CLAVE: 02011

RUTA: MEX-002D



Km: 25.00

Tipo: 1

Sent: 1

Km: 25.00

Tipo: 1

Sent: 2

Km: 67.60

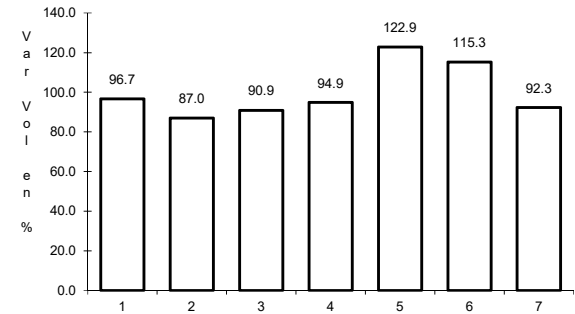
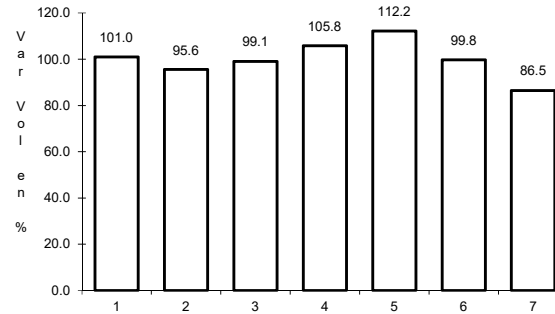
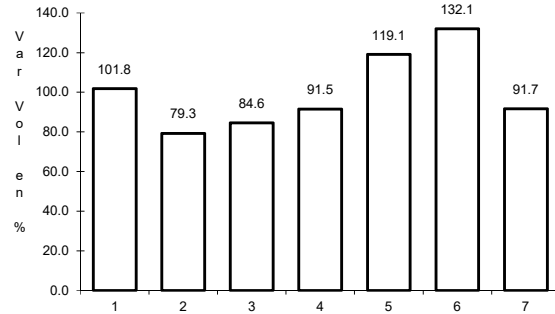
Tipo: 1

Sent: 1

14 CARR: La Rumorosa - Tecate (Cuota)

CLAVE: 02011

RUTA: MEX-002D



Km: 0.00

Tipo: 3

Sent: 1

Km: 0.00

Tipo: 3

Sent: 2

Km: 30.56

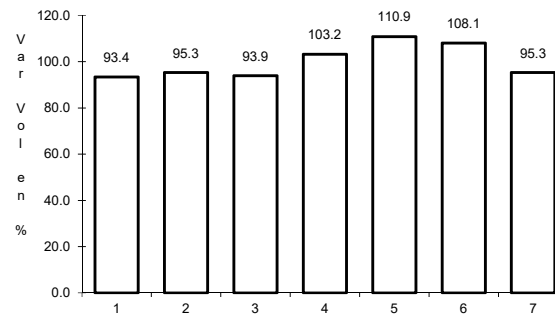
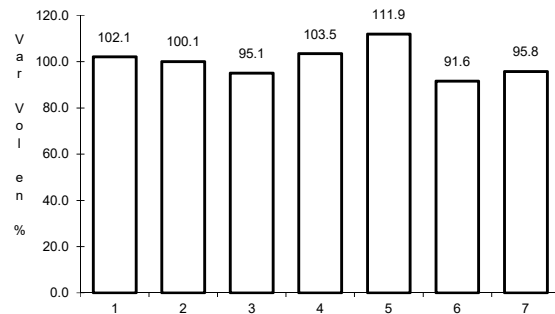
Tipo: 3

Sent: 1

15 CARR: Libramiento de Mexicali (Cuota)

CLAVE: 02319

RUTA: MEX-002D



Km: 0.00

Tipo: 3

Sent: 0

Km: 40.60

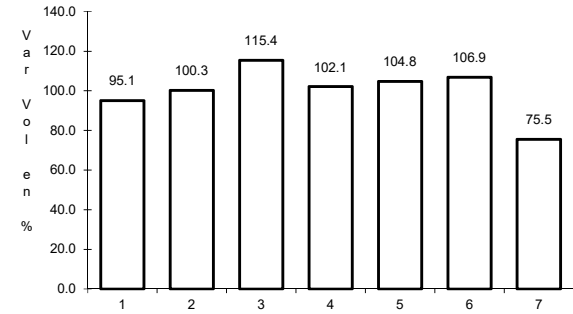
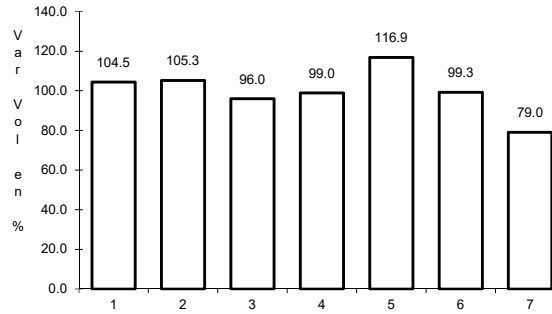
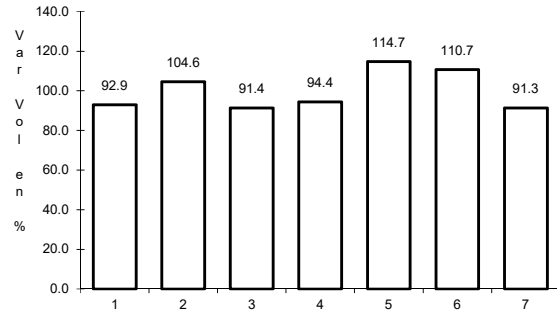
Tipo: 1

Sent: 0

17 CARR: Tecate - Tijuana (Cuota)

CLAVE: 02011

RUTA: MEX-002D



Km: 147.60

Tipo: 1

Sent: 1

Km: 147.60

Tipo: 1

Sent: 2

Km: 147.60

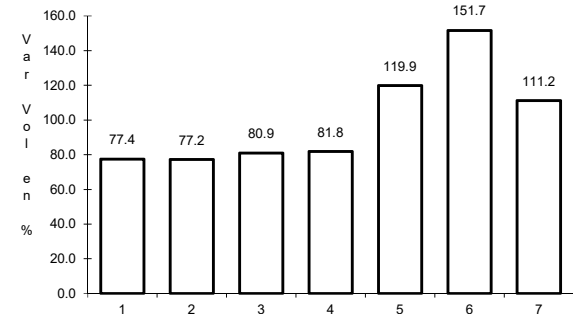
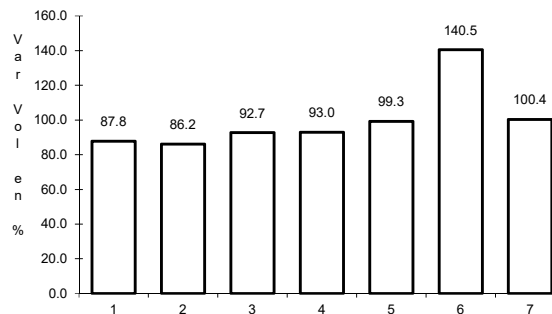
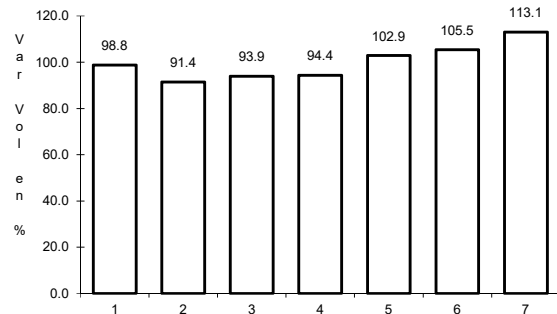
Tipo: 3

Sent: 1

18 CARR: Tijuana - Ensenada (Cuota)

CLAVE: 02100

RUTA: MEX-001D



Km: 7.50

Tipo: 3

Sent: 1

Km: 7.50

Tipo: 3

Sent: 2

Km: 66.44

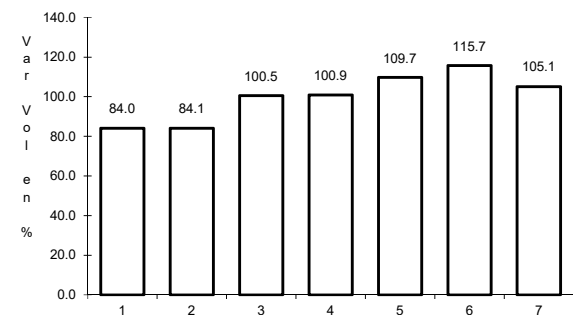
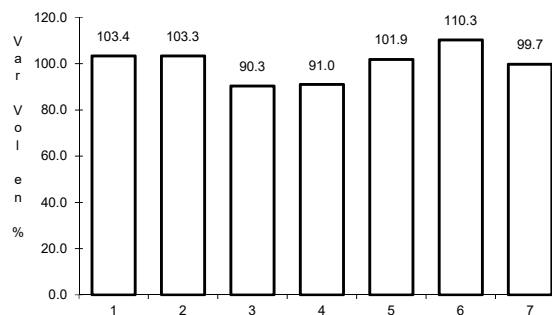
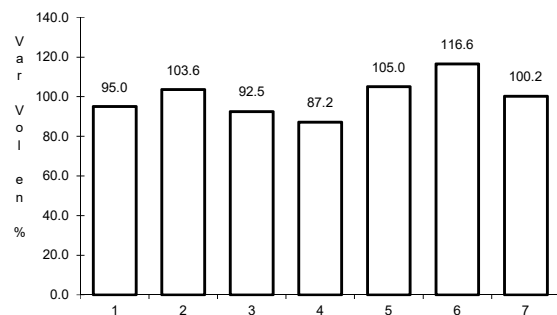
Tipo: 3

Sent: 1

19 CARR: Mexicali - Tijuana

CLAVE: 02082

RUTA: MEX-002D-MEX



Km: 7.80

Tipo: 3

Sent: 1

Km: 7.80

Tipo: 3

Sent: 2

Km: 165.00

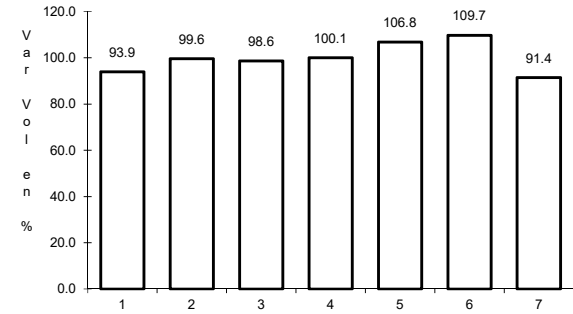
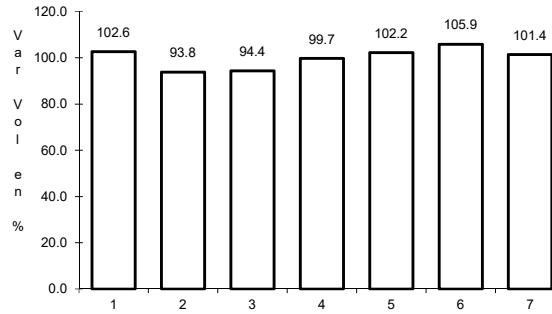
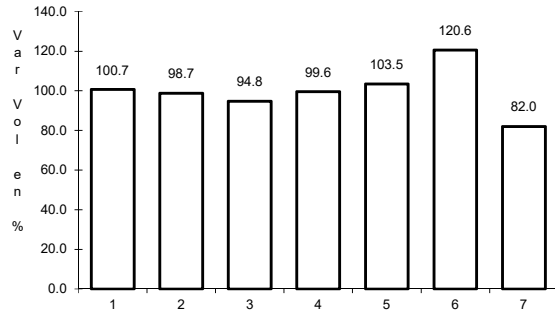
Tipo: 3

Sent: 0

20 CARR: Algodones - Ent. Islas Agrarias Grupo B

CLAVE: 02006

RUTA: BC-008



Km: 0.00 Tipo: 3 Sent: 0

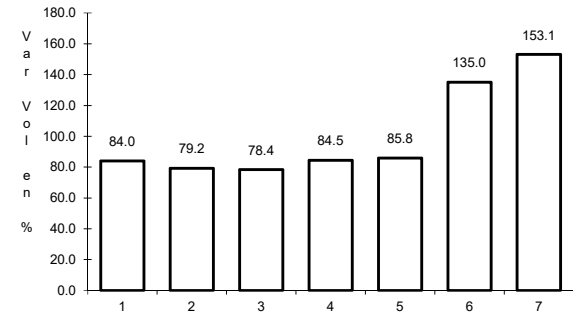
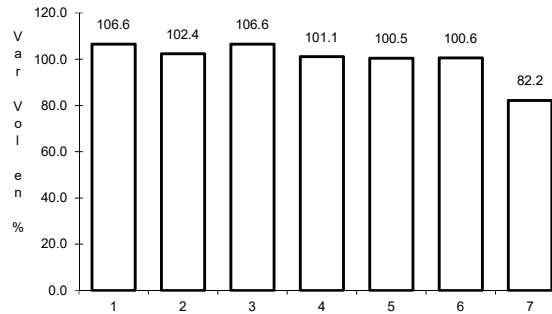
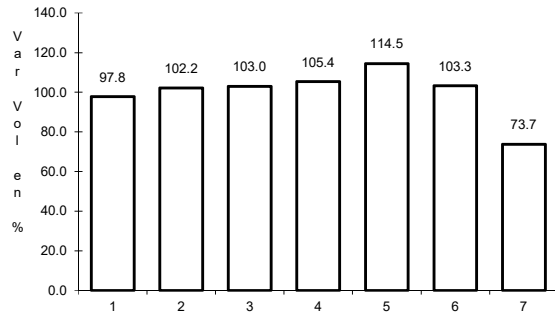
Km: 31.50 Tipo: 1 Sent: 0

Km: 55.50 Tipo: 1 Sent: 0

21 CARR: Corredor Tijuana 2000

CLAVE: 02006

RUTA: BC



Km: 0.00 Tipo: 3 Sent: 1

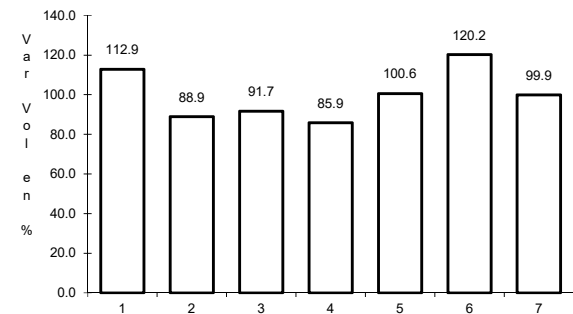
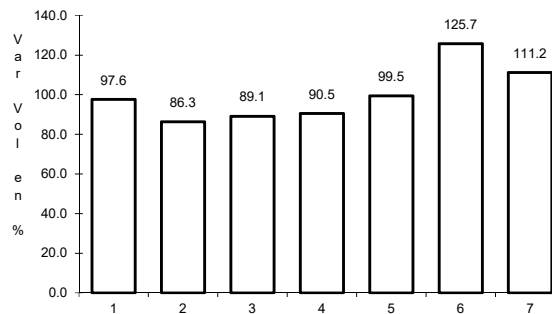
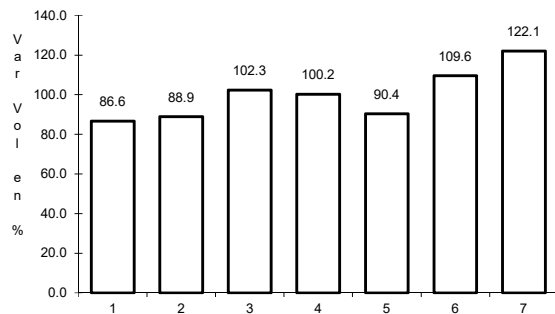
Km: 0.00 Tipo: 3 Sent: 2

Km: 40.00 Tipo: 1 Sent: 1

22 CARR: Ejido Benito Juárez - Ejido Chiapas

CLAVE: 02501

RUTA: BC-061



Km: 0.00 Tipo: 3 Sent: 0

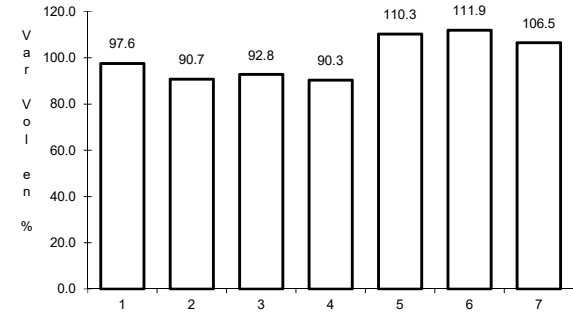
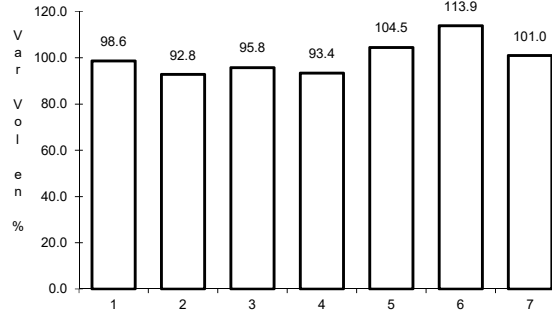
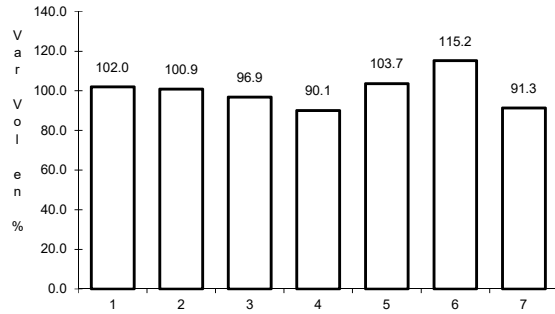
Km: 7.00 Tipo: 1 Sent: 0

Km: 10.56 Tipo: 1 Sent: 0

23 CARR: Ejido Monterrey - Mazón

CLAVE: 02004

RUTA: BC-003



Km: 0.00 Tipo: 3 Sent: 0

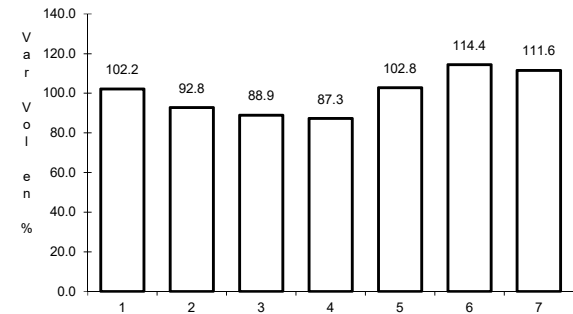
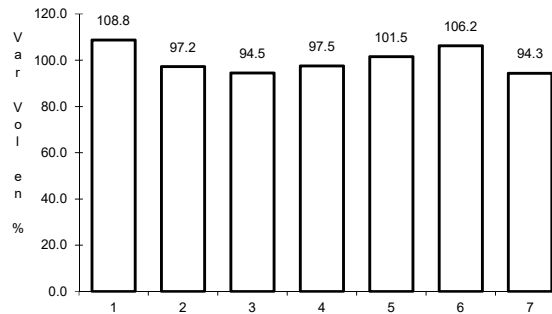
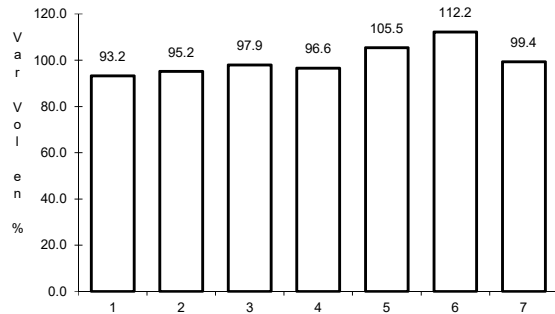
Km: 15.16 Tipo: 3 Sent: 0

Km: 35.00 Tipo: 1 Sent: 0

24 CARR: El Faro - Estación Coahuila

CLAVE: 02013

RUTA: BC-004



Km: 0.00 Tipo: 3 Sent: 0

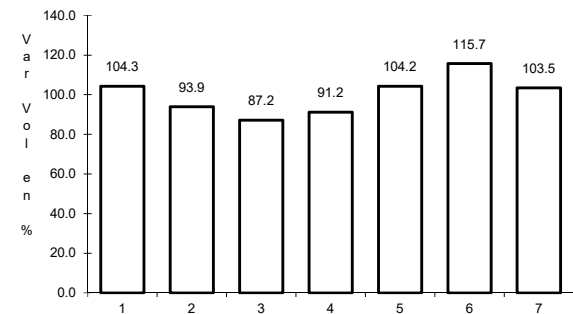
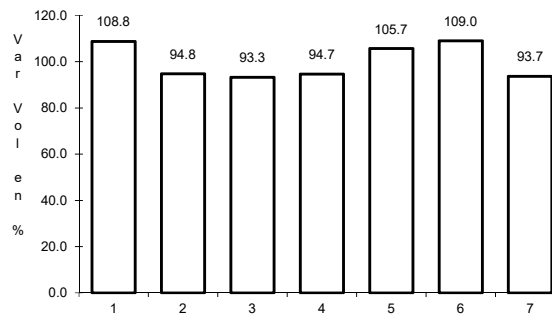
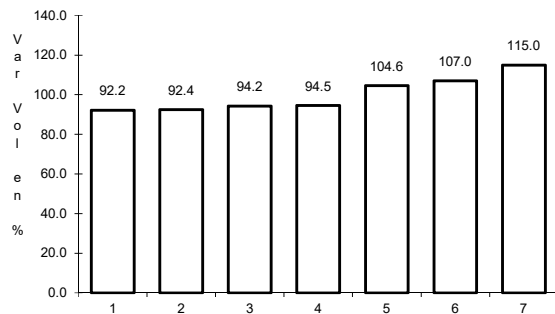
Km: 16.30 Tipo: 1 Sent: 0

Km: 34.50 Tipo: 1 Sent: 0

25 CARR: Ent. Santa Rosa - Ent. Pachuca

CLAVE: 02015

RUTA: BC-006



Km: 0.00 Tipo: 3 Sent: 0

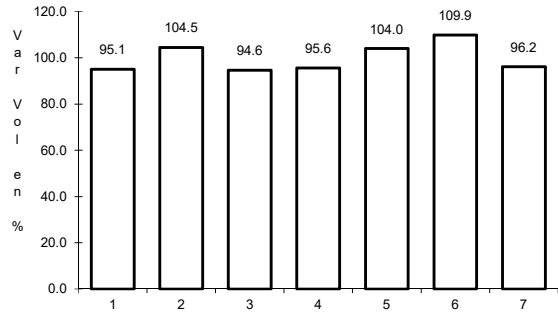
Km: 10.90 Tipo: 3 Sent: 0

Km: 18.00 Tipo: 3 Sent: 0

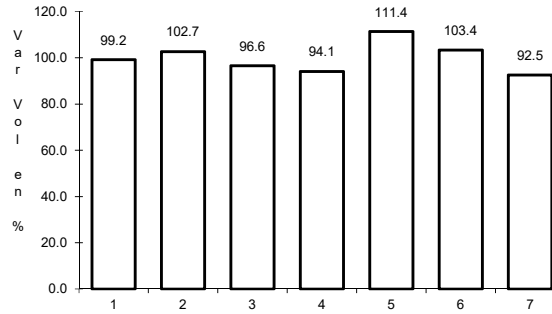
26 CARR: La Puerta - T. C. (Mexicali - Estación Coahuila)

CLAVE: 02502

RUTA: BC-010



Km: 4.60 Tipo: 1 Sent: 0

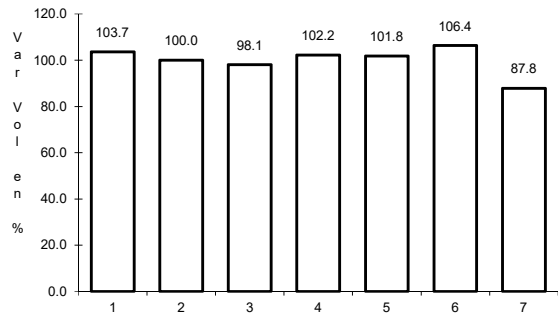


Km: 9.00 Tipo: 3 Sent: 0

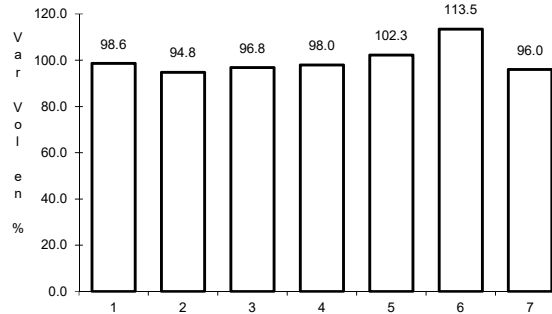
27 CARR: Mexicali - Algodones

CLAVE: 02012

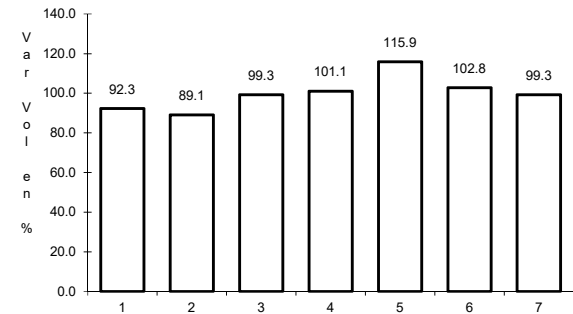
RUTA: BC-002



Km: 12.00 Tipo: 3 Sent: 0



Km: 49.65 Tipo: 1 Sent: 0

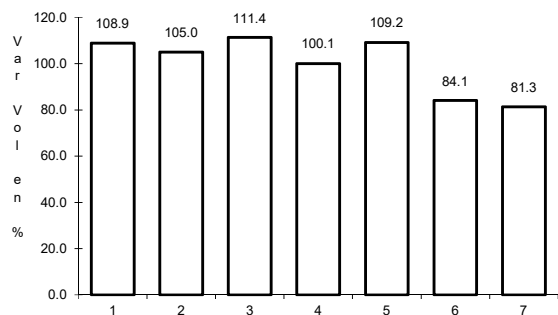


Km: 94.46 Tipo: 1 Sent: 0

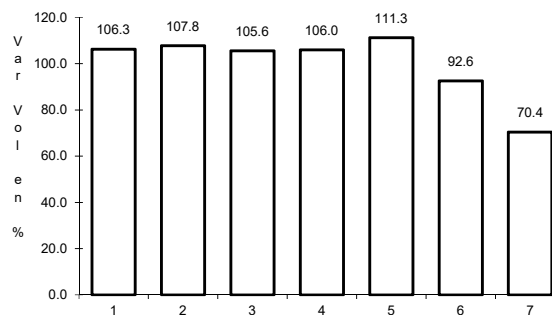
28 CARR: Mexicali - Estación Coahuila

CLAVE: 02016

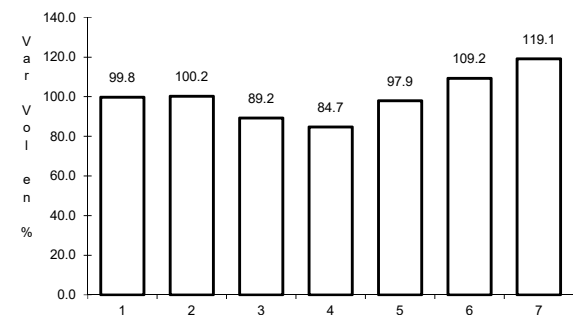
RUTA: BC-001



Km: 0.00 Tipo: 3 Sent: 1



Km: 0.00 Tipo: 3 Sent: 2

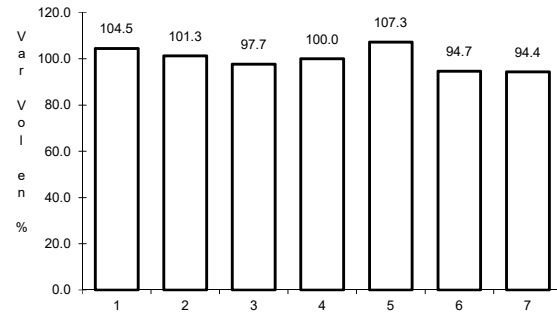


Km: 96.65 Tipo: 1 Sent: 0

29 CARR: Mexicali - Progreso

CLAVE: 02507

RUTA: BC-005



Km: 15.30

Tipo: 1

Sent: 0