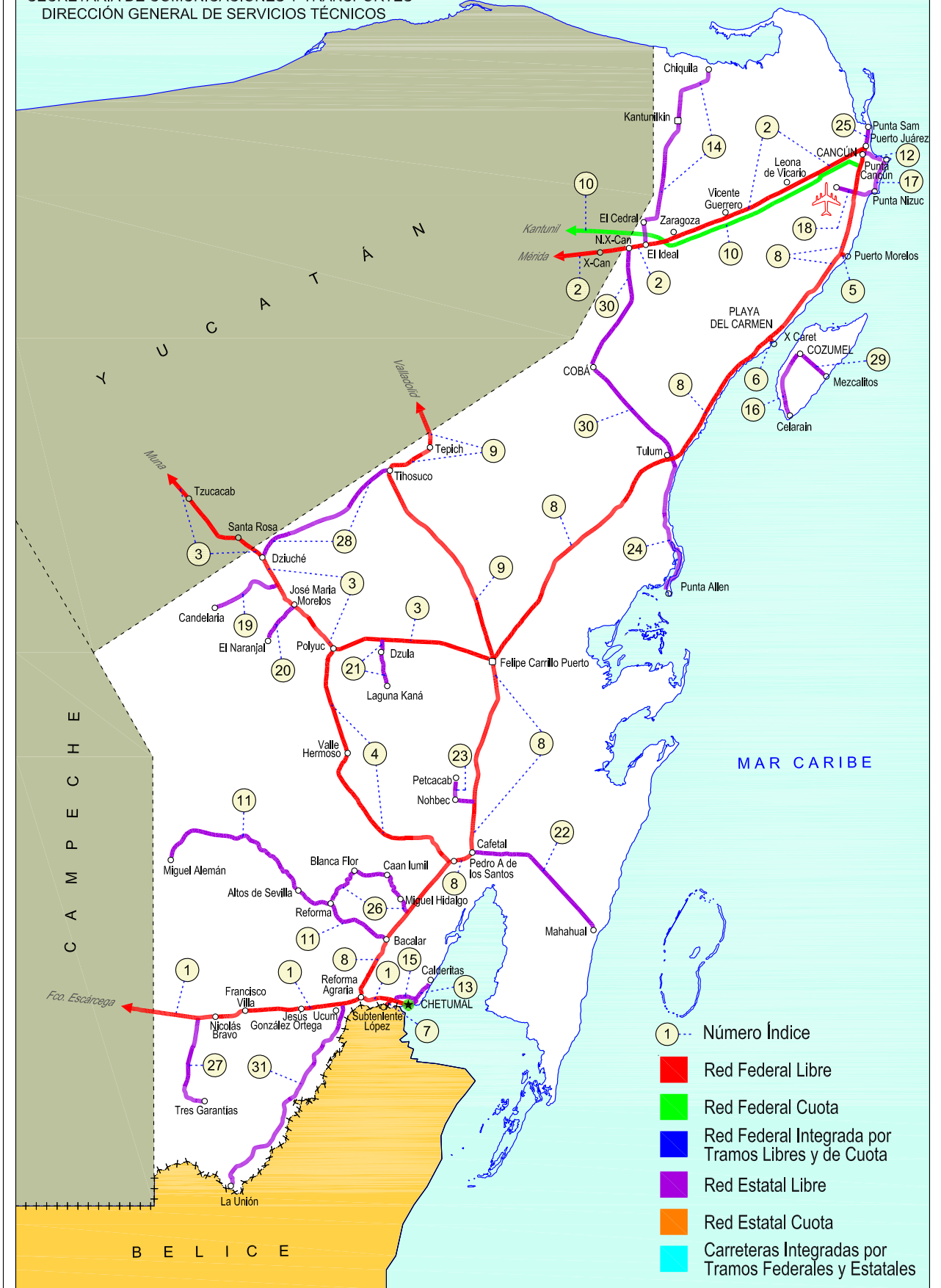
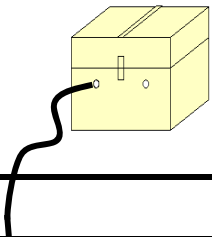


23 QUINTANA ROO

SECRETARÍA DE COMUNICACIONES Y TRANSPORTES
DIRECCIÓN GENERAL DE SERVICIOS TÉCNICOS





QUINTANA ROO

NO. INDICE	CARRETERA	RUTA
---RED FEDERAL LIBRE---		
1	Francisco Escárcega - Chetumal	MEX-186
2	Mérida - Puerto Juárez	MEX-180
3	Muna - Felipe Carrillo Puerto	MEX-184
4	Polyuc - T. C. (Reforma Agraria - Puerto Juárez)	MEX-293
5	Ramal a Puerto Morelos	MEX
6	Ramal a Punta Piedra	MEX
7	Ramal a Subteniente López	MEX-186
8	Reforma Agraria - Puerto Juárez	MEX-307
9	Valladolid - Felipe Carrillo Puerto	MEX-295
---RED FEDERAL DE CUOTA---		
10	Mérida - Cancún (Cuota)	MEX-180D
---RED ESTATAL LIBRE---		
11	Bacalar - Miguel Alemán	QR
12	Cancún - Punta Cancún	QR
13	Chetumal - Calderitas	QR-004
14	El Ideal - Chiquila	QR-005
15	Libramiento de Chetumal	QR
16	Perimetral Cozumel	QR
17	Punta Nizuc - Cancún	QR
18	Ramal a Aeropuerto Cancún	QR
19	Ramal a Candelaria	QR
20	Ramal a El Naranjal	QR
21	Ramal a Laguna de Kaná	QR
22	Ramal a Mahahual	QR
23	Ramal a Petcacab	QR-018
24	Ramal a Punta Allen	QR-015
25	Ramal a Punta Sam	QR
26	Ramal a Reforma	QR-016
27	Ramal a Tres Garantías	QR
28	Tihosuco - Dziuche	QR
29	Transversal de Cozumel	QR
30	Tulum - Nuevo X-Can	QR
31	Ucum - Unión	QR

QUINTANA ROO

1 CARR: Francisco Escárcega - Chetumal

CLAVE: 00093

RUTA: MEX-186

AÑO: 2015

LUGAR	ESTACION				CLASIFICACION VEHICULAR EN PORCIENTO														COORDENADAS	
	KM	TE	SC	TDPA	M	A	B	C2	C3	T3S2	T3S3	T3S2R4	OTROS	A	B	C	K'	D	LATITUD	LONGITUD
Francisco Escárcega	0.00	3	0	3231	10.8	64.9	2.9	6.7	1.4	6.7	1.4	4.5	0.7	75.7	2.9	21.4	0.071	0.505	18.604117	-90.718253
Adolfo López Mateos	41.50	1	0	2267	3.4	63.4	5.0	9.9	2.0	6.9	2.0	6.9	0.5	66.8	5.0	28.2	0.085	0.526	18.639413	-90.305387
T. Der. Silvituc	55.70	1	0	2277	5.7	63.4	3.1	7.5	2.7	8.4	2.2	6.0	1.0	69.1	3.1	27.8	0.064	0.506	18.651338	-90.275566
T. Der. Silvituc	55.70	3	0	2050	4.4	59.3	7.1	8.2	1.7	9.0	1.9	7.6	0.8	63.7	7.1	29.2	0.071	0.504	18.649372	-90.261370
Conhuás	100.00	1	0	1833	4.5	56.9	7.8	8.7	1.8	9.3	2.2	8.0	0.8	61.4	7.8	30.8	0.070	0.505	18.539999	-89.910639
Xpujil	155.73	1	0	2751	6.9	63.7	2.6	8.6	2.7	6.7	2.1	5.7	1.0	70.6	2.6	26.8	0.069	0.502	18.509555	-89.412742
Lim. Edos. Term. Camp. Ppia. Qroo.	179.90																			
Nicolás Bravo	206.01	1	0	2558	5.9	68.0	4.9	7.1	0.8	6.3	1.8	4.3	0.9	73.9	4.9	21.2	0.105	0.512	18.458619	-88.937750
Nicolás Bravo	206.01	3	0	2973	4.1	71.0	4.6	6.6	0.9	6.6	1.2	4.4	0.6	75.1	4.6	20.3	0.073	0.540	18.459120	-88.920932
T. Izq. Morocoy	214.90	1	0	2636	2.1	67.3	5.3	7.6	1.6	7.5	1.5	6.3	0.8	69.4	5.3	25.3	0.079	0.510	18.478845	-88.818048
T. Izq. Morocoy	214.90	3	0	2531	2.1	68.2	5.3	8.0	1.4	7.4	1.3	5.7	0.6	70.3	5.3	24.4	0.079	0.505	18.479152	-88.807895
T. Der. Unión	247.50	1	0	4955	4.9	73.6	2.5	7.6	1.0	5.8	1.1	3.0	0.5	78.5	2.5	19.0	0.066	0.512	18.505095	-88.527271
T. Der. Unión	247.50	3	0	6321	4.1	76.9	1.9	7.8	1.0	4.6	0.8	2.3	0.6	81.0	1.9	17.1	0.076	0.509	18.507475	-88.513350
T. Izq. Fpe. Carrillo Puerto	255.15	1	0	6768	3.2	77.9	2.2	7.2	1.4	4.6	0.8	2.3	0.4	81.1	2.2	16.7	0.079	0.509	18.525888	-88.469918
T. Der. Subteniente López	268.57	1	1	7733	3.0	86.0	1.2	6.6	0.8	1.0	0.5	0.5	0.4	89.0	1.2	9.8	0.110	0.508	18.516888	-88.378375
T. Der. Subteniente López	268.57	1	2	7500	2.7	85.2	1.3	7.4	0.8	1.1	0.6	0.5	0.4	87.9	1.3	10.8	0.097	0.508	18.516866	-88.378361
T. Izq. Av. Insurgentes	270.00	1	1	11665	3.5	89.4	0.7	4.1	0.5	0.8	0.6	0.2	0.2	92.9	0.7	6.4	0.096	0.502	18.513343	-88.363240
T. Izq. Av. Insurgentes	270.00	1	2	11583	3.3	88.6	0.8	4.7	0.5	1.0	0.7	0.2	0.2	91.9	0.8	7.3	0.088	0.502	18.513340	-88.363219
T. Izq. Av. Insurgentes	270.00	3	1	5135	3.3	89.5	0.2	5.6	0.3	0.6	0.2	0.2	0.1	92.8	0.2	7.0	0.076	0.510	18.510708	-88.354014
T. Izq. Av. Insurgentes	270.00	3	2	4936	4.2	88.2	0.2	5.8	0.3	0.6	0.3	0.3	0.1	92.4	0.2	7.4	0.085	0.510	18.510678	-88.354076
Chetumal	277.36	1	1	7296	4.2	89.7	0.3	4.5	0.2	0.5	0.4	0.1	0.1	93.9	0.3	5.8	0.081	0.503	18.501784	-88.320859
Chetumal	277.36	1	2	7387	5.0	88.8	0.3	4.6	0.2	0.5	0.4	0.1	0.1	93.8	0.3	5.9	0.079	0.503	18.501756	-88.320867

2 CARR: Mérida - Puerto Juárez

CLAVE: 00067

RUTA: MEX-180

AÑO: 2015

LUGAR	ESTACION				CLASIFICACION VEHICULAR EN PORCIENTO														COORDENADAS	
	KM	TE	SC	TDPA	M	A	B	C2	C3	T3S2	T3S3	T3S2R4	OTROS	A	B	C	K'	D	LATITUD	LONGITUD
Mérida	0.00																			
X. Periférico de Mérida	5.60	1	1	11091	9.5	83.0	0.7	3.9	0.3	1.4	0.8	0.1	0.3	92.5	0.7	6.8	0.075	0.500	20.957493	-89.572220
X. Periférico de Mérida	5.60	1	2	11109	9.5	82.7	0.7	4.0	0.3	1.5	0.9	0.1	0.3	92.2	0.7	7.1	0.076	0.500	20.957499	-89.572228
X. Periférico de Mérida	5.60	3	1	12459	4.6	82.7	1.3	5.2	1.3	1.9	1.5	0.9	0.6	87.3	1.3	11.4	0.083	0.504	20.955080	-89.566513
X. Periférico de Mérida	5.60	3	2	12660	5.6	80.0	1.3	6.0	1.5	2.1	1.7	1.1	0.7	85.6	1.3	13.1	0.083	0.504	20.955046	-89.566538
Teya	13.00	1	1	9814	3.9	83.9	1.4	4.9	1.4	2.0	0.9	1.0	0.6	87.8	1.4	10.8	0.085	0.509	20.936565	-89.532385
Teya	13.00	1	2	9452	3.9	82.3	1.6	5.6	1.5	2.3	1.0	1.2	0.6	86.2	1.6	12.2	0.078	0.509	20.936560	-89.532392
T. Der. Seyé	28.79	1	1	4996	1.2	86.0	1.1	6.1	1.6	2.1	0.9	0.8	0.2	87.2	1.1	11.7	0.091	0.500	20.892638	-89.385357

QUINTANA ROO

2 CARR : Mérida - Puerto Juárez

CLAVE: 00067

RUTA: MEX-180

AÑO: 2015

LUGAR	ESTACION				CLASIFICACION VEHICULAR EN PORCIENTO														COORDENADAS	
	KM	TE	SC	TDPA	M	A	B	C2	C3	T3S2	T3S3	T3S2R4	OTROS	A	B	C	K'	D	LATITUD	LONGITUD
T. Der. Seyé	28.79	1	2	4988	0.9	84.3	1.2	7.2	1.8	2.4	1.1	0.9	0.2	85.2	1.2	13.6	0.092	0.500	20.892666	-89.385340
T. Der. Seyé	28.79	3	1	4595	0.7	84.6	2.3	5.9	2.1	2.4	0.7	0.9	0.4	85.3	2.3	12.4	0.092	0.504	20.891911	-89.371383
T. Der. Seyé	28.79	3	2	4514	0.9	83.2	2.5	6.2	2.3	2.6	0.8	1.1	0.4	84.1	2.5	13.4	0.082	0.504	20.891897	-89.371439
Tahmek	42.00	1	1	4673	0.6	86.4	2.1	4.3	1.4	1.8	0.6	2.6	0.2	87.0	2.1	10.9	0.092	0.505	20.875605	-89.271324
Tahmek	42.00	1	2	4776	0.6	85.2	2.4	4.8	1.5	1.9	0.6	2.7	0.3	85.8	2.4	11.8	0.118	0.505	20.875604	-89.271321
T. Izq. Hoctún (1º Acceso)	46.65	1	0	2226	9.4	71.1	3.5	11.3	1.9	1.6	0.7	0.4	0.1	80.5	3.5	16.0	0.079	0.511	20.867579	-89.214076
T. Izq. Hoctún (2º Acceso)	48.62	1	0	1089	7.8	73.4	1.7	10.6	2.9	2.0	0.9	0.4	0.3	81.2	1.7	17.1	0.085	0.512	20.858971	-89.203805
T. Izq. Hoctún (2º Acceso)	48.62	3	0	1990	13.2	68.9	2.7	10.6	1.5	2.1	0.6	0.4	0.0	82.1	2.7	15.2	0.069	0.510	20.854449	-89.195891
Kantunil	67.28	3	0	2824	1.9	77.7	4.6	9.1	3.3	2.0	0.8	0.5	0.1	79.6	4.6	15.8	0.092	0.513	20.791361	-89.019278
Libre Unión	92.91	1	0	2598	3.7	79.0	3.2	7.1	2.9	2.6	0.9	0.3	0.3	82.7	3.2	14.1	0.097	0.520	20.708365	-88.815606
Libre Unión	92.91	3	0	2930	1.7	81.4	3.9	6.4	3.0	2.1	0.6	0.4	0.5	83.1	3.9	13.0	0.086	0.504	20.706922	-88.800381
Piste	116.30	3	0	6260	10.7	74.9	2.5	4.8	1.3	4.0	0.9	0.3	0.6	85.6	2.5	11.9	0.115	0.527	20.690783	-88.579495
1er. Acceso a Zona Arqueológica de Chichen-Itzá	117.90	3	0	4652	7.0	76.9	3.8	6.7	1.6	2.8	0.6	0.3	0.3	83.9	3.8	12.3	0.112	0.504	20.688367	-88.571979
2do. Acceso a Zona Arqueológica de Chichen-Itzá	121.10	3	0	4488	7.0	77.5	3.4	5.9	2.0	2.8	0.7	0.2	0.5	84.5	3.4	12.1	0.106	0.503	20.669453	-88.557631
T. Der. Chankom	127.00	1	0	3834	2.8	80.5	4.1	7.3	2.0	2.1	0.7	0.4	0.1	83.3	4.1	12.6	0.100	0.514	20.643857	-88.494298
T. Der. Chankom	127.00	3	0	3970	2.7	82.0	3.5	6.7	1.4	2.2	0.8	0.3	0.4	84.7	3.5	11.8	0.101	0.506	20.640307	-88.482947
Valladolid	160.68	1	0	5845	11.3	78.0	2.0	4.3	0.4	3.2	0.3	0.1	0.4	89.3	2.0	8.7	0.083	0.532	20.685553	-88.229171
Valladolid	160.68	3	0	6067	11.2	77.7	1.5	5.1	0.9	2.5	0.6	0.3	0.2	88.9	1.5	9.6	0.071	0.541	20.694103	-88.168725
T. Der. Coba	187.80	1	0	5262	2.0	83.1	2.8	5.7	1.4	3.1	0.5	1.0	0.4	85.1	2.8	12.1	0.105	0.506	20.659424	-87.960147
T. Der. Chemax	189.79	1	0	3577	4.1	85.4	1.1	4.6	1.6	2.3	0.4	0.4	0.1	89.5	1.1	9.4	0.110	0.512	20.657837	-87.951537
T. Der. Chemax	189.79	3	0	3045	4.0	83.6	2.6	5.1	1.8	1.9	0.4	0.5	0.1	87.6	2.6	9.8	0.104	0.502	20.663887	-87.926058
X-Can	225.00	3	0	2512	1.9	84.8	2.5	6.1	1.9	1.7	0.5	0.5	0.1	86.7	2.5	10.8	0.131	0.502	20.860690	-87.655871
Lim. Edos. Term. Yuc. Ppia. Q. R.	230.40																			
Nuevo X-Can	231.90	3	0	3184	1.8	84.4	2.0	7.1	2.2	1.7	0.4	0.3	0.1	86.2	2.0	11.8	0.105	0.507	20.871693	-87.591082
Zaragoza	239.00	1	0	4200	2.8	85.4	1.8	4.9	1.2	2.7	0.5	0.3	0.4	88.2	1.8	10.0	0.084	0.505	20.881368	-87.533487
Vicente Guerrero	261.00	1	0	3264	1.4	82.1	2.9	8.4	2.1	2.1	0.6	0.2	0.2	83.5	2.9	13.6	0.095	0.503	20.940868	-87.331944
Leona Vicario	275.50	1	0	5155	2.1	84.8	1.7	6.1	1.5	2.6	0.6	0.4	0.2	86.9	1.7	11.4	0.088	0.508	20.980404	-87.224933
Leona Vicario	275.50	3	0	5252	5.0	83.2	1.4	5.5	0.8	2.8	0.6	0.3	0.4	88.2	1.4	10.4	0.099	0.505	20.993320	-87.188903
T. Der. Aeropuerto	302.50	1	0	6343	1.7	80.3	1.1	8.7	3.3	3.1	1.3	0.3	0.2	82.0	1.1	16.9	0.097	0.508	21.096225	-86.983452
T. Der. Aeropuerto	302.50	3	1	4164	2.6	81.6	2.1	7.9	2.3	1.4	0.7	1.1	0.3	84.2	2.1	13.7	0.079	0.514	21.102457	-86.970694
T. Der. Aeropuerto	302.50	3	2	4398	2.5	80.6	2.1	8.4	2.7	1.6	0.7	1.2	0.2	83.1	2.1	14.8	0.120	0.514	21.102473	-86.970714
T. Der. Alfredo V. Bonfil	310.00	1	1	19347	5.0	83.3	0.3	2.8	0.5	2.3	4.1	0.6	1.1	88.3	0.3	11.4	0.067	0.532	21.138095	-86.899038
T. Der. Alfredo V. Bonfil	310.00	1	2	21982	5.0	82.5	0.3	2.9	0.5	2.5	4.5	0.6	1.2	87.5	0.3	12.2	0.064	0.532	21.138121	-86.899058
Puerto Juárez	321.41																			

QUINTANA ROO

3 CARR : Muna - Felipe Carrillo Puerto

CLAVE: 00148

RUTA: MEX-184

AÑO : 2015

LUGAR	ESTACION				CLASIFICACION VEHICULAR EN PORCIENTO										COORDENADAS					
	KM	TE	SC	TDPA	M	A	B	C2	C3	T3S2	T3S3	T3S2R4	OTROS	A	B	C	K'	D	LATITUD	LONGITUD
Muna	0.00	3	0	3628	10.5	74.0	1.1	9.0	1.4	2.4	0.8	0.4	0.4	84.5	1.1	14.4	0.068	0.515	20.478022	-89.698253
Ticul	19.10	1	0	3776	7.0	80.4	1.0	8.0	1.1	1.7	0.4	0.3	0.1	87.4	1.0	11.6	0.073	0.507	20.404153	-89.569146
Ticul	19.10	3	0	5614	32.7	56.1	0.9	5.5	0.6	3.1	0.5	0.2	0.4	88.8	0.9	10.3	0.077	0.503	20.373934	-89.518093
Oxkutzcab	40.50	3	0	5597	24.2	67.9	0.7	3.4	0.8	2.1	0.4	0.3	0.2	92.1	0.7	7.2	0.075	0.502	20.283559	-89.378271
Tekax	53.90	3	0	3292	25.9	64.9	0.3	6.0	0.7	2.0	0.1	0.0	0.1	90.8	0.3	8.9	0.076	0.505	20.188183	-89.267821
Tzucacab	86.60	1	0	1633	18.2	68.3	0.9	9.8	1.1	1.2	0.3	0.1	0.1	86.5	0.9	12.6	0.078	0.501	20.079106	-89.063139
Tzucacab	86.60	3	0	1441	29.5	63.0	0.3	5.2	0.9	0.9	0.2	0.0	0.0	92.5	0.3	7.2	0.078	0.508	20.065358	-89.038459
Santa Rosa	109.60	3	0	2566	3.5	76.7	2.6	9.5	2.2	2.2	0.9	2.3	0.1	80.2	2.6	17.2	0.082	0.507	19.944903	-88.876625
Lim. Edos. Term. Yuc. Ppia. Q. R.	117.00																			
Dziuche	118.00	1	0	2316	2.7	76.2	2.6	10.9	2.1	2.4	0.8	2.2	0.1	78.9	2.6	18.5	0.091	0.507	19.905544	-88.819733
Dziuche	118.00	3	0	2768	3.8	81.2	1.6	5.6	2.1	2.4	0.9	2.0	0.4	85.0	1.6	13.4	0.070	0.518	19.890663	-88.804742
José María Morelos	138.60	1	0	3939	5.4	81.4	1.6	6.3	1.3	2.0	0.6	1.3	0.1	86.8	1.6	11.6	0.070	0.510	19.763697	-88.724421
José María Morelos	138.60	3	0	2830	6.5	77.0	2.3	6.8	1.5	2.5	0.9	1.9	0.6	83.5	2.3	14.2	0.075	0.501	19.741343	-88.698128
Polyuc	161.94	1	0	2599	2.0	79.2	2.5	9.2	2.3	2.2	0.7	1.8	0.1	81.2	2.5	16.3	0.077	0.501	19.611933	-88.571916
Polyuc	161.94	3	0	1292	5.9	76.7	2.2	10.4	1.9	2.0	0.2	0.5	0.2	82.6	2.2	15.2	0.071	0.540	19.609550	-88.555269
T. Der. Dzulá	178.11	3	0	1355	4.5	82.5	1.0	8.2	1.3	1.6	0.3	0.6	0.0	87.0	1.0	12.0	0.076	0.508	19.643687	-88.411231
Felipe Carrillo Puerto	216.97	1	0	5732	18.6	71.0	0.7	4.1	0.5	3.9	0.5	0.2	0.5	89.6	0.7	9.7	0.066	0.508	19.583838	-88.055496

4 CARR : Polyuc - T. C. (Reforma Agraria - Puerto Juárez)

CLAVE: 23014

RUTA: MEX-293

AÑO : 2015

LUGAR	ESTACION				CLASIFICACION VEHICULAR EN PORCIENTO										COORDENADAS					
	KM	TE	SC	TDPA	M	A	B	C2	C3	T3S2	T3S3	T3S2R4	OTROS	A	B	C	K'	D	LATITUD	LONGITUD
Polyuc	0.00	3	0	2419	7.6	77.2	2.3	6.6	1.7	2.2	0.7	1.6	0.1	84.8	2.3	12.9	0.082	0.511	19.607419	-88.572107
T. Der. Ramonal	24.00	1	0	1412	1.6	79.1	2.7	7.7	2.5	2.3	1.1	2.7	0.3	80.7	2.7	16.6	0.098	0.512	19.400642	-88.565034
T. Der. Ramonal	24.00	3	0	1530	2.4	77.2	4.0	7.1	2.9	2.5	1.2	2.6	0.1	79.6	4.0	16.4	0.093	0.518	19.398120	-88.564278
T. Izq. Santa María Poniente	35.00	1	0	1747	2.2	78.3	3.4	7.4	3.0	2.0	0.9	2.7	0.1	80.5	3.4	16.1	0.081	0.504	19.340813	-88.547038
T. Izq. Santa María Poniente	35.00	3	0	1665	2.4	78.5	3.3	8.3	2.7	2.1	0.0	2.6	0.1	80.9	3.3	15.8	0.087	0.512	19.338767	-88.546389
Valle Hermoso	50.00	3	0	1616	7.9	73.3	2.8	7.9	2.6	2.2	0.9	2.3	0.1	81.2	2.8	16.0	0.100	0.522	19.180033	-88.522657
T. Izq. Chacchoben	93.50	1	0	1702	4.8	73.6	4.9	7.7	2.5	2.1	2.0	2.4	0.0	78.4	4.9	16.7	0.090	0.514	18.982327	-88.218164
T. Izq. Chacchoben	93.50	3	0	1742	5.8	76.2	2.6	7.1	2.3	2.5	0.9	2.6	0.0	82.0	2.6	15.4	0.075	0.521	18.972076	-88.208692
T. C. Reforma Agraria - Puerto Juárez	99.00	1	0	1518	3.5	77.3	3.0	7.9	2.1	2.5	1.0	2.7	0.0	80.8	3.0	16.2	0.084	0.508	18.949352	-88.187746

QUINTANA ROO

5 CARR: Ramal a Puerto Morelos

CLAVE: 23569

RUTA: MEX

AÑO: 2015

LUGAR	ESTACION				CLASIFICACION VEHICULAR EN PORCIENTO														COORDENADAS	
	KM	TE	SC	TDPA	M	A	B	C2	C3	T3S2	T3S3	T3S2R4	OTROS	A	B	C	K'	D	LATITUD	LONGITUD
T. C. Reforma Agraria - Puerto Juárez	0.00	3	0	9774	3.7	85.5	0.3	4.7	0.3	4.6	0.3	0.1	0.5	89.2	0.3	10.5	0.069	0.506	20.854249	-86.893266
Puerto Morelos	2.20																			

6 CARR: Ramal a Punta Piedra

CLAVE: 23575

RUTA: MEX

AÑO: 2015

LUGAR	ESTACION				CLASIFICACION VEHICULAR EN PORCIENTO														COORDENADAS	
	KM	TE	SC	TDPA	M	A	B	C2	C3	T3S2	T3S3	T3S2R4	OTROS	A	B	C	K'	D	LATITUD	LONGITUD
T. C. Reforma Agraria - Puerto Juárez	0.00	3	1	8296	8.1	82.1	0.5	3.5	0.3	1.5	2.8	0.5	0.7	90.2	0.5	9.3	0.056	0.529	20.626414	-87.081770
T. C. Reforma Agraria - Puerto Juárez	0.00	3	2	9334	7.6	81.7	0.6	4.1	0.3	1.6	2.8	0.5	0.8	89.3	0.6	10.1	0.061	0.529	20.626408	-87.081787
Punta Piedra (Playa del Carmen)	1.50																			

7 CARR: Ramal a Subteniente López

CLAVE: 23567

RUTA: MEX-186

AÑO: 2015

LUGAR	ESTACION				CLASIFICACION VEHICULAR EN PORCIENTO														COORDENADAS	
	KM	TE	SC	TDPA	M	A	B	C2	C3	T3S2	T3S3	T3S2R4	OTROS	A	B	C	K'	D	LATITUD	LONGITUD
T. C. Francisco Escárcega - Chetumal	0.00	3	1	4554	5.3	89.0	0.5	4.0	0.4	0.6	0.1	0.0	0.1	94.3	0.5	5.2	0.093	0.501	18.509361	-88.379010
T. C. Francisco Escárcega - Chetumal	0.00	3	2	4569	5.5	88.3	0.5	4.4	0.4	0.7	0.1	0.0	0.1	93.8	0.5	5.7	0.090	0.501	18.509376	-88.379015
Subteniente López	3.00																			

8 CARR: Reforma Agraria - Puerto Juárez

CLAVE: 23132

RUTA: MEX-307

AÑO: 2015

LUGAR	ESTACION				CLASIFICACION VEHICULAR EN PORCIENTO														COORDENADAS	
	KM	TE	SC	TDPA	M	A	B	C2	C3	T3S2	T3S3	T3S2R4	OTROS	A	B	C	K'	D	LATITUD	LONGITUD
T. C. Francisco Escárcega - Chetumal	0.00	3	1	5033	2.8	83.5	1.8	6.6	0.9	2.1	0.6	1.4	0.3	86.3	1.8	11.9	0.101	0.504	18.540150	-88.467258
T. C. Francisco Escárcega - Chetumal	0.00	3	2	4955	1.8	83.5	2.0	7.1	1.0	2.1	0.7	1.5	0.3	85.3	2.0	12.7	0.097	0.504	18.540119	-88.467237
Bacalar	19.15	1	1	4090	2.9	85.0	1.6	5.5	0.9	1.9	0.5	1.4	0.3	87.9	1.6	10.5	0.100	0.500	18.661319	-88.403605
Bacalar	19.15	1	2	4087	2.0	84.6	1.8	5.9	1.1	2.3	0.5	1.5	0.3	86.6	1.8	11.6	0.096	0.500	18.661352	-88.403626
Bacalar	19.15	3	0	7735	3.9	77.1	2.1	8.5	0.8	4.6	0.7	1.9	0.4	81.0	2.1	16.9	0.087	0.502	18.695888	-88.388158
T. Izq. Reforma	22.24	3	0	6107	2.7	74.1	2.9	11.8	0.8	4.2	0.8	2.3	0.4	76.8	2.9	20.3	0.091	0.511	18.707743	-88.384214
Buenavista	46.90	1	0	4457	0.9	77.1	3.6	7.7	1.5	4.5	1.0	3.3	0.4	78.0	3.6	18.4	0.092	0.502	18.879004	-88.246707
Buenavista	46.90	3	0	4810	1.3	81.6	0.5	4.6	2.4	4.5	0.9	3.3	0.9	82.9	0.5	16.6	0.101	0.507	18.890078	-88.237126
T. Izq. Lazáro Cárdenas	56.30	1	0	4943	0.9	75.6	4.1	9.0	1.3	4.7	0.8	3.1	0.5	76.5	4.1	19.4	0.104	0.507	18.942341	-88.189149
T. Izq. Lazáro Cárdenas	56.30	3	0	3993	1.7	76.8	3.6	8.8	1.1	4.3	0.7	2.7	0.3	78.5	3.6	17.9	0.099	0.506	18.951760	-88.179954
T. Izq. Chacchoben	70.80	1	0	3718	3.2	75.7	3.7	7.1	1.2	5.0	0.8	2.9	0.4	78.9	3.7	17.4	0.098	0.520	19.010774	-88.111315
T. Izq. Chacchoben	70.80	3	0	3348	3.0	72.3	3.7	9.7	1.4	5.0	0.9	3.5	0.5	75.3	3.7	21.0	0.079	0.503	19.034419	-88.110169

QUINTANA ROO

8 CARR: Reforma Agraria - Puerto Juárez

CLAVE: 23132

RUTA: MEX-307

AÑO: 2015

LUGAR	ESTACION				CLASIFICACION VEHICULAR EN PORCIENTO														COORDENADAS	
	KM	TE	SC	TDPA	M	A	B	C2	C3	T3S2	T3S3	T3S2R4	OTROS	A	B	C	K'	D	LATITUD	LONGITUD
T. Izq. Noh-Bec	81.94	1	0	3424	1.0	76.3	4.1	7.9	1.2	4.7	0.9	3.4	0.5	77.3	4.1	18.6	0.102	0.509	19.131380	-88.105446
T. Izq. Noh-Bec	81.94	3	0	3338	2.0	76.2	4.0	7.0	1.2	5.1	0.8	3.3	0.4	78.2	4.0	17.8	0.098	0.500	19.137235	-88.105182
Felipe Carrillo Puerto	132.00	1	0	3901	2.8	77.5	3.2	6.4	1.0	5.0	1.0	2.6	0.5	80.3	3.2	16.5	0.094	0.507	19.557155	-88.043537
Felipe Carrillo Puerto	132.00	3	0	3358	1.2	74.1	4.2	9.3	1.3	5.2	1.1	3.0	0.6	75.3	4.2	20.5	0.085	0.506	19.611113	-88.022847
Tulum Pueblo	227.00	1	0	6051	3.4	78.5	2.4	7.2	1.0	4.6	0.7	1.7	0.5	81.9	2.4	15.7	0.091	0.502	20.206045	-87.478872
Tulum Pueblo	227.00	3	1	7009	3.6	89.7	0.3	2.4	0.1	1.0	2.3	0.2	0.4	93.3	0.3	6.4	0.056	0.535	20.209852	-87.467234
Tulum Pueblo	227.00	3	2	7326	3.3	89.7	0.3	2.7	0.1	1.0	2.3	0.2	0.4	93.0	0.3	6.7	0.061	0.535	20.209793	-87.467243
T. Izq. Cobá	229.19	1	1	8691	3.5	90.0	0.3	2.4	0.1	1.0	2.1	0.2	0.4	93.5	0.3	6.2	0.060	0.528	20.213958	-87.454611
T. Izq. Cobá	229.19	1	2	8850	3.3	89.6	0.3	2.7	0.1	1.0	2.4	0.2	0.4	92.9	0.3	6.8	0.068	0.528	20.213909	-87.454552
T. Izq. Cobá	229.19	3	1	7751	2.7	85.0	1.2	4.8	0.6	2.0	2.2	0.8	0.7	87.7	1.2	11.1	0.093	0.515	20.214647	-87.452467
T. Izq. Cobá	229.19	3	2	7296	3.7	82.7	1.3	5.5	0.6	2.2	2.3	0.9	0.8	86.4	1.3	12.3	0.079	0.515	20.214629	-87.452441
X. C. Tulum - Aeropuerto	231.19	1	1	7248	1.4	85.2	2.1	7.4	0.8	1.5	0.6	0.7	0.3	86.6	2.1	11.3	0.105	0.503	20.217810	-87.442380
X. C. Tulum - Aeropuerto	231.19	1	2	7150	1.0	84.7	2.2	7.8	1.0	1.6	0.6	0.8	0.3	85.7	2.2	12.1	0.087	0.503	20.217822	-87.442389
X. C. Tulum - Aeropuerto	231.19	3	1	6773	0.9	86.5	1.9	6.4	0.8	1.7	0.6	1.0	0.2	87.4	1.9	10.7	0.106	0.503	20.220308	-87.434708
X. C. Tulum - Aeropuerto	231.19	3	2	6856	1.2	85.1	2.1	7.1	0.9	1.8	0.6	1.0	0.2	86.3	2.1	11.6	0.088	0.503	20.220314	-87.434709
T. Der. Xel-Ha	244.80	1	1	6487	0.9	84.2	2.4	7.7	1.2	1.8	0.5	1.1	0.2	85.1	2.4	12.5	0.093	0.515	20.313638	-87.368583
T. Der. Xel-Ha	244.80	1	2	6895	0.8	82.3	2.7	8.9	1.3	2.1	0.5	1.2	0.2	83.1	2.7	14.2	0.102	0.515	20.313638	-87.368583
T. Der. Xel-Ha	244.80	3	1	7350	0.9	87.4	2.0	6.0	0.9	1.2	0.6	0.6	0.4	88.3	2.0	9.7	0.099	0.502	20.326928	-87.360948
T. Der. Xel-Ha	244.80	3	2	7422	0.9	86.5	2.2	6.5	1.0	1.3	0.6	0.6	0.4	87.4	2.2	10.4	0.110	0.502	20.326957	-87.360919
T. Der. Akumal	254.44	1	1	8699	0.7	85.4	2.2	8.0	0.8	1.4	0.5	0.8	0.2	86.1	2.2	11.7	0.094	0.502	20.392973	-87.323094
T. Der. Akumal	254.44	1	2	8783	0.9	83.3	2.6	9.3	0.9	1.5	0.5	0.8	0.2	84.2	2.6	13.2	0.102	0.502	20.392975	-87.323068
Playa del Carmen	289.70	1	1	19637	2.3	86.9	1.7	6.2	1.1	0.7	0.6	0.4	0.1	89.2	1.7	9.1	0.089	0.510	20.609182	-87.106031
Playa del Carmen	289.70	1	2	20463	2.4	85.8	1.9	6.8	1.2	0.8	0.6	0.4	0.1	88.2	1.9	9.9	0.086	0.510	20.609231	-87.105942
Playa del Carmen	295.00	3	1	27630	3.7	82.1	1.8	9.3	1.2	0.7	0.6	0.4	0.2	85.8	1.8	12.4	0.071	0.517	20.659733	-87.059310
Playa del Carmen	295.00	3	2	25799	1.8	81.9	2.1	10.9	1.3	0.7	0.7	0.4	0.2	83.7	2.1	14.2	0.070	0.517	20.659698	-87.059324
T. Der. Puerto Morelos	321.48	1	1	17874	0.6	77.2	2.6	18.1	0.5	0.5	0.2	0.2	0.1	77.8	2.6	19.6	0.084	0.502	20.838442	-86.909939
T. Der. Puerto Morelos	321.48	1	2	17996	0.5	75.0	3.2	19.8	0.5	0.5	0.2	0.2	0.1	75.5	3.2	21.3	0.090	0.502	20.838423	-86.909966
T. Der. Puerto Morelos	321.48	3	1	24098	0.8	86.0	1.8	9.9	0.5	0.5	0.2	0.2	0.1	86.8	1.8	11.4	0.082	0.503	20.864386	-86.894500
T. Der. Puerto Morelos	321.48	3	2	24437	0.8	84.3	2.0	11.4	0.5	0.5	0.2	0.2	0.1	85.1	2.0	12.9	0.073	0.503	20.864425	-86.894476
T. Izq. Aeropuerto Cancún	341.50	1	1	28156	1.0	84.9	2.3	10.4	0.6	0.5	0.1	0.2	0.0	85.9	2.3	11.8	0.073	0.503	21.024296	-86.853562
T. Izq. Aeropuerto Cancún	341.50	1	2	27809	1.0	84.4	2.7	10.5	0.6	0.5	0.1	0.2	0.0	85.4	2.7	11.9	0.071	0.503	21.024341	-86.853546
T. Izq. Aeropuerto Cancún	341.50	3	1	26161	1.2	82.4	2.3	12.1	0.3	0.8	0.6	0.1	0.2	83.6	2.3	14.1	0.105	0.519	21.040391	-86.850146
T. Izq. Aeropuerto Cancún	341.50	3	2	28204	1.2	81.8	2.5	12.4	0.3	0.8	0.7	0.1	0.2	83.0	2.5	14.5	0.108	0.519	21.040375	-86.850118
T. Izq. Alfredo V. Bonfil	348.22	1	1	34340	1.7	87.5	2.1	7.1	0.2	0.6	0.5	0.1	0.2	89.2	2.1	8.7	0.098	0.500	21.081343	-86.843752
T. Izq. Alfredo V. Bonfil	348.22	1	2	34381	1.7	86.4	2.3	7.9	0.2	0.6	0.6	0.1	0.2	88.1	2.3	9.6	0.088	0.500	21.081363	-86.843802

QUINTANA ROO

8 CARR: Reforma Agraria - Puerto Juárez

CLAVE: 23132

RUTA: MEX-307

AÑO: 2015

LUGAR	ESTACION				CLASIFICACION VEHICULAR EN PORCIENTO														COORDENADAS	
	KM	TE	SC	TDPA	M	A	B	C2	C3	T3S2	T3S3	T3S2R4	OTROS	A	B	C	K'	D	LATITUD	LONGITUD
Cancún	355.48	1	1	40220	1.4	87.9	1.1	6.7	0.2	0.8	1.5	0.1	0.3	89.3	1.1	9.6	0.085	0.508	21.107657	-86.839339
Cancún	355.48	1	2	38891	1.6	86.7	1.2	7.4	0.2	0.8	1.7	0.1	0.3	88.3	1.2	10.5	0.089	0.508	21.107656	-86.839333
T. C. Mérida - Puerto Juárez	357.48																			

9 CARR: Valladolid - Felipe Carrillo Puerto

CLAVE: 00010

RUTA: MEX-295

AÑO: 2015

LUGAR	ESTACION				CLASIFICACION VEHICULAR EN PORCIENTO														COORDENADAS	
	KM	TE	SC	TDPA	M	A	B	C2	C3	T3S2	T3S3	T3S2R4	OTROS	A	B	C	K'	D	LATITUD	LONGITUD
Valladolid	0.00	3	0	4349	15.1	79.5	0.3	2.7	0.2	1.9	0.1	0.1	0.1	94.6	0.3	5.1	0.069	0.513	20.674618	-88.204005
Chichimilá	6.90	3	0	2073	10.0	84.6	0.3	3.2	0.3	1.4	0.1	0.0	0.1	94.6	0.3	5.1	0.074	0.502	20.624418	-88.229614
Tekom	12.05	3	0	1371	8.6	82.9	0.6	6.5	0.7	0.6	0.1	0.0	0.0	91.5	0.6	7.9	0.086	0.506	20.590705	-88.265409
Tixcacalcupul	19.80	3	0	976	14.4	76.4	0.8	6.5	0.4	1.2	0.2	0.1	0.0	90.8	0.8	8.4	0.097	0.513	20.529485	-88.271498
Lim. Edos. Term. Yuc. Ppia. Q. R.	46.00																			
Tepich	51.40	1	0	683	12.7	74.4	0.6	9.8	0.8	0.9	0.6	0.1	0.1	87.1	0.6	12.3	0.092	0.509	20.250573	-88.254991
Tihosuco	65.00	1	0	733	10.0	78.1	1.0	8.9	0.6	0.9	0.4	0.1	0.0	88.1	1.0	10.9	0.102	0.520	20.193109	-88.358923
Tihosuco	65.00	3	0	795	12.7	78.0	0.7	6.8	0.5	0.9	0.3	0.1	0.0	90.7	0.7	8.6	0.103	0.515	20.190777	-88.386732
T. Izq. San Felipe Berriozábal	99.00	1	0	630	8.0	81.2	1.1	8.5	0.4	0.6	0.1	0.1	0.0	89.2	1.1	9.7	0.084	0.504	19.963535	-88.242700
T. Izq. San Felipe Berriozábal	99.00	3	0	661	7.0	82.2	1.7	8.0	0.4	0.5	0.1	0.1	0.0	89.2	1.7	9.1	0.089	0.513	19.961462	-88.240579
Señor	116.50	1	0	981	14.1	75.0	1.8	7.5	0.4	1.0	0.1	0.1	0.0	89.1	1.8	9.1	0.129	0.502	19.852990	-88.145036
Señor	116.50	3	0	1232	7.7	79.2	1.4	10.7	0.3	0.7	0.0	0.0	0.0	86.9	1.4	11.7	0.083	0.501	19.831107	-88.130903
Felipe Carrillo Puerto	147.70	1	0	1230	0.7	89.9	1.0	6.7	0.4	1.1	0.1	0.0	0.1	90.6	1.0	8.4	0.067	0.518	19.612165	-88.056451

10 CARR: Mérida - Cancún (Cuota)

CLAVE: 00071

RUTA: MEX-180D

AÑO: 2015

LUGAR	ESTACION				CLASIFICACION VEHICULAR EN PORCIENTO														COORDENADAS	
	KM	TE	SC	TDPA	M	A	B	C2	C3	T3S2	T3S3	T3S2R4	OTROS	A	B	C	K'	D	LATITUD	LONGITUD
T. C. Mérida - Puerto Juárez	0.00																			
Caseta de Cobro Piste	51.00	1	1	1943	0.2	75.0	3.7	9.3	1.2	2.7	0.9	6.6	0.4	75.2	3.7	21.1	0.093	0.540	20.730645	-88.590275
Caseta de Cobro Piste	51.00	1	2	1658	0.2	71.9	4.2	10.4	1.2	3.1	1.0	7.7	0.3	72.1	4.2	23.7	0.117	0.540	20.730666	-88.590202
Caseta de Cobro X-Can	155.00	1	1	1011	0.3	76.7	6.9	4.9	0.6	2.6	0.8	7.0	0.2	77.0	6.9	16.1	0.128	0.528	20.877344	-87.631186
Caseta de Cobro X-Can	155.00	1	2	1133	0.6	73.9	7.8	5.3	0.7	2.9	0.9	7.6	0.3	74.5	7.8	17.7	0.112	0.528	20.877344	-87.631186
Lim. Edos. Term. Yuc. Ppia. Q. R.	160.00																			
T. C. Mérida - Puerto Juárez	292.00	1	1	1421	2.9	80.1	4.8	6.0	0.4	1.6	0.7	3.0	0.5	83.0	4.8	12.2	0.128	0.513	21.096120	-86.979420
T. C. Mérida - Puerto Juárez	292.00	1	2	1347	3.4	77.0	5.4	6.6	0.5	1.8	0.9	3.6	0.8	80.4	5.4	14.2	0.134	0.513	21.095992	-86.979415
T. C. Reforma Agraria - Puerto Juárez	308.10	1	0	9319	3.0	72.8	2.0	15.4	2.1	1.8	0.8	1.6	0.5	75.8	2.0	22.2	0.096	0.520	21.020394	-86.858785

QUINTANA ROO

11 CARR: Bacalar - Miguel Alemán

CLAVE: 20030

RUTA: QR

AÑO: 2015

LUGAR	ESTACION				CLASIFICACION VEHICULAR EN PORCIENTO										COORDENADAS					
	KM	TE	SC	TDPA	M	A	B	C2	C3	T3S2	T3S3	T3S2R4	OTROS	A	B	C	K'	D	LATITUD	LONGITUD
T. C. (Reforma Agraria - Puerto Juárez)	0.00																			
Reforma	21.00	3	0	692	25.4	65.1	0.5	7.1	0.4	1.4	0.1	0.0	0.0	90.5	0.5	9.0	0.105	0.502	18.813197	-88.577899
Altos de Sevilla	31.00	1	0	569	17.8	71.4	0.8	8.4	0.7	0.7	0.1	0.0	0.1	89.2	0.8	10.0	0.100	0.508	18.848832	-88.675422
Altos de Sevilla	31.00	3	0	484	24.4	66.4	0.5	7.7	0.0	0.5	0.5	0.0	0.0	90.8	0.5	8.7	0.093	0.501	18.854867	-88.677482
Miguel Alemán	110.00																			

12 CARR: Cancún - Punta Cancún

CLAVE: 23581

RUTA: QR

AÑO: 2015

LUGAR	ESTACION				CLASIFICACION VEHICULAR EN PORCIENTO										COORDENADAS					
	KM	TE	SC	TDPA	M	A	B	C2	C3	T3S2	T3S3	T3S2R4	OTROS	A	B	C	K'	D	LATITUD	LONGITUD
Cancún	0.00	3	1	26462	4.6	85.3	0.6	9.0	0.0	0.2	0.3	0.0	0.0	89.9	0.6	9.5	0.095	0.512	21.157630	-86.812602
Cancún	0.00	3	2	25218	4.3	84.9	0.7	9.6	0.0	0.2	0.3	0.0	0.0	89.2	0.7	10.1	0.077	0.512	21.157652	-86.812630
T. Der. Colibrí	7.00	1	1	24124	5.0	83.0	0.6	10.9	0.1	0.1	0.3	0.0	0.0	88.0	0.6	11.4	0.087	0.519	21.137130	-86.766848
T. Der. Colibrí	7.00	1	2	22357	5.2	81.5	0.7	12.1	0.1	0.1	0.3	0.0	0.0	86.7	0.7	12.6	0.077	0.519	21.137117	-86.766865
Punta Cancún	8.00	1	1	23928	4.9	83.6	0.6	10.3	0.1	0.0	0.5	0.0	0.0	88.5	0.6	10.9	0.082	0.512	21.134655	-86.757533
Punta Cancún	8.00	1	2	22825	5.7	82.2	0.6	10.9	0.1	0.0	0.5	0.0	0.0	87.9	0.6	11.5	0.077	0.512	21.134668	-86.757537

13 CARR: Chetumal - Calderitas

CLAVE: 23004

RUTA: QR-004

AÑO: 2015

LUGAR	ESTACION				CLASIFICACION VEHICULAR EN PORCIENTO										COORDENADAS					
	KM	TE	SC	TDPA	M	A	B	C2	C3	T3S2	T3S3	T3S2R4	OTROS	A	B	C	K'	D	LATITUD	LONGITUD
Chetumal	0.00	3	1	11399	11.2	84.5	0.0	2.3	0.2	0.7	0.8	0.1	0.2	95.7	0.0	4.3	0.067	0.501	18.535873	-88.275949
Chetumal	0.00	3	2	11424	11.1	84.0	0.0	2.7	0.2	0.8	0.9	0.1	0.2	95.1	0.0	4.9	0.067	0.501	18.535895	-88.275933
Calderitas	9.00	1	1	3420	12.9	83.9	0.4	1.8	0.2	0.4	0.3	0.0	0.1	96.8	0.4	2.8	0.102	0.518	18.553704	-88.260674
Calderitas	9.00	1	2	3681	9.3	87.5	0.4	2.0	0.1	0.4	0.2	0.0	0.1	96.8	0.4	2.8	0.078	0.518	18.553714	-88.260656

14 CARR: El Ideal - Chiquila

CLAVE: 23005

RUTA: QR-005

AÑO: 2015

LUGAR	ESTACION				CLASIFICACION VEHICULAR EN PORCIENTO										COORDENADAS					
	KM	TE	SC	TDPA	M	A	B	C2	C3	T3S2	T3S3	T3S2R4	OTROS	A	B	C	K'	D	LATITUD	LONGITUD
T. C. Mérida - Puerto Juárez	0.00	3	0	1141	5.7	87.7	0.7	4.4	0.9	0.6	0.0	0.0	0.0	93.4	0.7	5.9	0.082	0.503	20.897843	-87.547068
Kantunilkin	31.20	1	0	2190	4.7	83.9	1.1	6.2	1.6	1.7	0.3	0.4	0.1	88.6	1.1	10.3	0.101	0.500	21.084105	-87.488478
Kantunilkin	31.20	3	0	1587	8.8	81.9	0.7	6.2	1.1	1.1	0.1	0.0	0.1	90.7	0.7	8.6	0.110	0.500	21.114504	-87.484719
Chiquila	75.60	1	0	1137	13.2	78.4	1.0	4.3	0.9	1.8	0.2	0.0	0.2	91.6	1.0	7.4	0.116	0.501	21.419429	-87.337445

QUINTANA ROO

15 CARR: Libramiento de Chetumal

CLAVE: 23130

RUTA: QR

AÑO: 2015

LUGAR	ESTACION				CLASIFICACION VEHICULAR EN PORCIENTO													COORDENADAS		
	KM	TE	SC	TDPA	M	A	B	C2	C3	T3S2	T3S3	T3S2R4	OTROS	A	B	C	K'	D	LATITUD	LONGITUD
T. C. Francisco Escárcega - Chetumal	0.00	3	1	8675	4.3	89.7	0.9	2.8	0.5	0.8	0.6	0.2	0.2	94.0	0.9	5.1	0.092	0.502	18.517448	-88.344549
T. C. Francisco Escárcega - Chetumal	0.00	3	2	8746	3.3	90.3	1.0	3.1	0.5	0.8	0.6	0.2	0.2	93.6	1.0	5.4	0.080	0.502	18.517447	-88.344540
T. C. Chetumal - Calderitas	5.00																			

16 CARR: Perimetral Cozumel

CLAVE: 00148

RUTA: QR

AÑO: 2015

LUGAR	ESTACION				CLASIFICACION VEHICULAR EN PORCIENTO													COORDENADAS		
	KM	TE	SC	TDPA	M	A	B	C2	C3	T3S2	T3S3	T3S2R4	OTROS	A	B	C	K'	D	LATITUD	LONGITUD
Cozumel	0.00	3	0	11352	21.5	70.7	0.4	5.6	0.2	0.5	0.8	0.1	0.2	92.2	0.4	7.4	0.119	0.502	20.469671	-86.974052
El Cedral	13.40	1	1	674	36.9	49.1	0.6	11.8	0.4	0.8	0.2	0.1	0.1	86.0	0.6	13.4	0.082	0.534	20.386269	-87.018472
El Cedral	13.40	1	2	773	10.6	74.3	0.6	12.5	0.5	1.1	0.2	0.1	0.1	84.9	0.6	14.5	0.133	0.534	20.386261	-87.018477
El Cedral	13.40	3	1	276	7.7	87.3	0.3	4.0	0.1	0.4	0.1	0.0	0.1	95.0	0.3	4.7	0.125	0.512	20.363092	-87.018084
El Cedral	13.40	3	2	290	36.5	58.3	0.3	4.3	0.1	0.3	0.1	0.0	0.1	94.8	0.3	4.9	0.159	0.512	20.363088	-87.018095
Celarain	25.00	1	0	768	9.4	84.5	0.5	4.7	0.2	0.6	0.1	0.0	0.0	93.9	0.5	5.6	0.148	0.506	20.293782	-86.963040

17 CARR: Punta Nizuc - Cancún

CLAVE: 23014

RUTA: QR

AÑO: 2015

LUGAR	ESTACION				CLASIFICACION VEHICULAR EN PORCIENTO													COORDENADAS		
	KM	TE	SC	TDPA	M	A	B	C2	C3	T3S2	T3S3	T3S2R4	OTROS	A	B	C	K'	D	LATITUD	LONGITUD
Punta Nizuc	0.00	3	1	10711	1.3	80.6	1.2	14.9	0.4	0.7	0.7	0.0	0.2	81.9	1.2	16.9	0.087	0.503	21.043138	-86.783116
Punta Nizuc	0.00	3	2	10577	1.1	77.9	1.3	17.5	0.4	0.9	0.7	0.0	0.2	79.0	1.3	19.7	0.087	0.503	21.043153	-86.783120
Punta Cancún	12.40																			

18 CARR: Ramal a Aeropuerto Cancún

CLAVE: 23574

RUTA: QR

AÑO: 2015

LUGAR	ESTACION				CLASIFICACION VEHICULAR EN PORCIENTO													COORDENADAS		
	KM	TE	SC	TDPA	M	A	B	C2	C3	T3S2	T3S3	T3S2R4	OTROS	A	B	C	K'	D	LATITUD	LONGITUD
T. C. Reforma Agraria - Puerto Juárez	0.00	3	1	15065	0.9	80.5	0.9	15.1	0.1	0.6	1.5	0.1	0.3	81.4	0.9	17.7	0.107	0.511	21.035499	-86.857156
T. C. Reforma Agraria - Puerto Juárez	0.00	3	2	14422	0.9	78.1	1.0	17.1	0.1	0.8	1.6	0.1	0.3	79.0	1.0	20.0	0.092	0.511	21.035487	-86.857131
Aeropuerto Cancún	2.00	1	1	14726	0.8	88.6	0.8	7.4	0.1	0.5	1.5	0.1	0.2	89.4	0.8	9.8	0.106	0.506	21.041356	-86.866417
Aeropuerto Cancún	2.00	1	2	14354	0.8	87.8	0.9	7.9	0.1	0.5	1.7	0.1	0.2	88.6	0.9	10.5	0.090	0.506	21.041353	-86.866416

QUINTANA ROO

19 CARR: Ramal a Candelaria

CLAVE: 23027

RUTA: QR

AÑO: 2015

LUGAR	ESTACION				CLASIFICACION VEHICULAR EN PORCIENTO														COORDENADAS	
	KM	TE	SC	TDPA	M	A	B	C2	C3	T3S2	T3S3	T3S2R4	OTROS	A	B	C	K'	D	LATITUD	LONGITUD
T. C. Muna - Felipe Carrillo Puerto	0.00	3	0	1010	20.8	73.0	0.3	3.7	0.3	1.5	0.2	0.0	0.2	93.8	0.3	5.9	0.098	0.501	19.806803	-88.757602
Candelaria	15.30																			

20 CARR: Ramal a El Naranjal

CLAVE: 23579

RUTA: QR

AÑO: 2015

LUGAR	ESTACION				CLASIFICACION VEHICULAR EN PORCIENTO														COORDENADAS	
	KM	TE	SC	TDPA	M	A	B	C2	C3	T3S2	T3S3	T3S2R4	OTROS	A	B	C	K'	D	LATITUD	LONGITUD
José María Morelos	0.00	3	0	770	30.1	63.9	0.3	3.5	0.9	0.9	0.4	0.0	0.0	94.0	0.3	5.7	0.084	0.509	19.734528	-88.717146
El Naranjal	16.00																			

21 CARR: Ramal a Laguna de Kaná

CLAVE: 23213

RUTA: QR

AÑO: 2015

LUGAR	ESTACION				CLASIFICACION VEHICULAR EN PORCIENTO														COORDENADAS	
	KM	TE	SC	TDPA	M	A	B	C2	C3	T3S2	T3S3	T3S2R4	OTROS	A	B	C	K'	D	LATITUD	LONGITUD
T. C. Muna - Felipe Carrillo Puerto	0.00	3	0	313	24.5	65.6	1.1	7.5	0.8	0.5	0.0	0.0	0.0	90.1	1.1	8.8	0.109	0.513	19.642635	-88.411674
Laguna de Kaná	12.20																			

22 CARR: Ramal a Mahahual

CLAVE: 23583

RUTA: QR

AÑO: 2015

LUGAR	ESTACION				CLASIFICACION VEHICULAR EN PORCIENTO														COORDENADAS	
	KM	TE	SC	TDPA	M	A	B	C2	C3	T3S2	T3S3	T3S2R4	OTROS	A	B	C	K'	D	LATITUD	LONGITUD
T. C. Reforma Agraria - Puerto Juárez	0.00	3	0	943	4.8	85.1	1.2	6.5	0.7	1.1	0.2	0.2	0.2	89.9	1.2	8.9	0.125	0.502	18.980104	-88.109752
Mahahual	60.09																			

23 CARR: Ramal a Petcacab

CLAVE: 23018

RUTA: QR-018

AÑO: 2015

LUGAR	ESTACION				CLASIFICACION VEHICULAR EN PORCIENTO														COORDENADAS	
	KM	TE	SC	TDPA	M	A	B	C2	C3	T3S2	T3S3	T3S2R4	OTROS	A	B	C	K'	D	LATITUD	LONGITUD
T. C. Reforma Agraria - Puerto Juárez	0.00	3	0	644	19.2	72.8	0.3	4.6	1.3	1.1	0.4	0.2	0.1	92.0	0.3	7.7	0.099	0.510	19.135332	-88.105685
Petcacab	37.00																			

QUINTANA ROO

24 CARR: Ramal a Punta Allen

CLAVE: 23015

RUTA: QR-015

AÑO: 2015

LUGAR	ESTACION				CLASIFICACION VEHICULAR EN PORCIENTO														COORDENADAS	
	KM	TE	SC	TDPA	M	A	B	C2	C3	T3S2	T3S3	T3S2R4	OTROS	A	B	C	K'	D	LATITUD	LONGITUD
T. C. Reforma Agraria - Puerto Juárez	0.00	3	0	9696	6.5	81.9	0.1	3.3	0.1	6.4	0.5	0.2	1.0	88.4	0.1	11.5	0.083	0.539	20.211768	-87.452489
Beh-Ha	10.20	1	0	838	9.5	82.8	0.1	5.7	0.3	0.9	0.4	0.0	0.3	92.3	0.1	7.6	0.115	0.500	20.129062	-87.465437
Punta Allen	57.00																			

25 CARR: Ramal a Punta Sam

CLAVE: 23582

RUTA: QR

AÑO: 2015

LUGAR	ESTACION				CLASIFICACION VEHICULAR EN PORCIENTO														COORDENADAS	
	KM	TE	SC	TDPA	M	A	B	C2	C3	T3S2	T3S3	T3S2R4	OTROS	A	B	C	K'	D	LATITUD	LONGITUD
Puerto Juárez	0.00	3	0	6484	6.6	83.5	0.3	3.1	0.1	5.1	0.4	0.1	0.8	90.1	0.3	9.6	0.106	0.505	21.189766	-86.807193
Punta Sam	5.00	1	0	1682	5.8	89.3	0.3	2.7	0.1	1.6	0.1	0.0	0.1	95.1	0.3	4.6	0.113	0.505	21.215435	-86.802381

26 CARR: Ramal a Reforma

CLAVE: 23016

RUTA: QR-016

AÑO: 2015

LUGAR	ESTACION				CLASIFICACION VEHICULAR EN PORCIENTO														COORDENADAS	
	KM	TE	SC	TDPA	M	A	B	C2	C3	T3S2	T3S3	T3S2R4	OTROS	A	B	C	K'	D	LATITUD	LONGITUD
T. C. Reforma Agraria - Puerto Juárez	0.00	3	0	1337	14.9	75.5	0.3	7.4	0.2	1.4	0.2	0.0	0.1	90.4	0.3	9.3	0.086	0.501	18.704012	-88.386524
Reforma	44.00																			

27 CARR: Ramal a Tres Garantías

CLAVE: 23585

RUTA: QR

AÑO: 2015

LUGAR	ESTACION				CLASIFICACION VEHICULAR EN PORCIENTO														COORDENADAS	
	KM	TE	SC	TDPA	M	A	B	C2	C3	T3S2	T3S3	T3S2R4	OTROS	A	B	C	K'	D	LATITUD	LONGITUD
T. C. Francisco Escárcega - Chetumal	0.00	3	0	178	20.8	68.3	0.2	7.9	0.1	1.2	1.5	0.0	0.0	89.1	0.2	10.7	0.101	0.506	18.455741	-89.000948
Tres Garantías	30.00																			

28 CARR: Tihosuco - Dziuche

CLAVE: 23576

RUTA: QR

AÑO: 2015

LUGAR	ESTACION				CLASIFICACION VEHICULAR EN PORCIENTO														COORDENADAS	
	KM	TE	SC	TDPA	M	A	B	C2	C3	T3S2	T3S3	T3S2R4	OTROS	A	B	C	K'	D	LATITUD	LONGITUD
T. C. Valladolid - Felipe Carrillo Puerto	0.00	3	0	388	10.3	83.8	0.4	4.2	0.5	0.6	0.2	0.0	0.0	94.1	0.4	5.5	0.106	0.522	20.176527	-88.397047
Dziuche	60.50	1	0	760	24.8	69.2	0.5	3.6	0.6	1.0	0.3	0.0	0.0	94.0	0.5	5.5	0.079	0.507	19.907532	-88.809143

QUINTANA ROO

29 CARR: Transversal de Cozumel

CLAVE: 23577

RUTA: QR

AÑO: 2015

LUGAR	ESTACION				CLASIFICACION VEHICULAR EN PORCIENTO														COORDENADAS	
	KM	TE	SC	TDPA	M	A	B	C2	C3	T3S2	T3S3	T3S2R4	OTROS	A	B	C	K'	D	LATITUD	LONGITUD
Cozumel	0.00	3	1	2846	46.5	47.1	0.4	4.2	0.3	0.7	0.5	0.1	0.2	93.6	0.4	6.0	0.106	0.509	20.482711	-86.914643
Cozumel	0.00	3	2	2955	45.0	48.1	0.4	4.8	0.3	0.7	0.4	0.1	0.2	93.1	0.4	6.5	0.112	0.509	20.482719	-86.914656
Mezcalitos	14.00																			

30 CARR: Tulum - Nuevo X-Can

CLAVE: 23570

RUTA: QR

AÑO: 2015

LUGAR	ESTACION				CLASIFICACION VEHICULAR EN PORCIENTO														COORDENADAS	
	KM	TE	SC	TDPA	M	A	B	C2	C3	T3S2	T3S3	T3S2R4	OTROS	A	B	C	K'	D	LATITUD	LONGITUD
T. C. Reforma Agraria - Puerto Juárez	0.00	3	0	7064	3.3	77.5	2.1	5.9	1.2	5.8	1.3	1.9	1.0	80.8	2.1	17.1	0.090	0.521	20.217118	-87.454305
T. Izq. Ruinas Cobá	42.95	1	0	3476	1.3	85.3	2.4	5.3	0.9	2.7	0.6	1.3	0.2	86.6	2.4	11.0	0.116	0.526	20.505877	-87.716409
T. Izq. Ruinas Cobá	42.95	3	0	449	5.5	86.0	0.4	7.0	0.4	0.6	0.1	0.0	0.0	91.5	0.4	8.1	0.116	0.508	20.510291	-87.716887
Nuevo X-Can	87.40	1	0	443	8.7	85.4	0.4	4.6	0.4	0.4	0.1	0.0	0.0	94.1	0.4	5.5	0.104	0.501	20.858946	-87.600854

31 CARR: Ucum - Unión

CLAVE: 23571

RUTA: QR

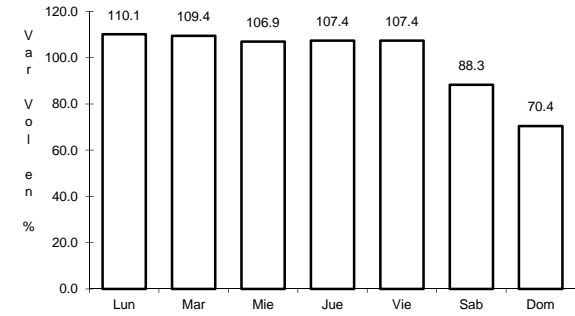
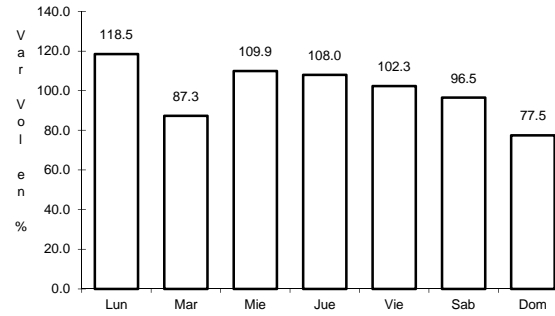
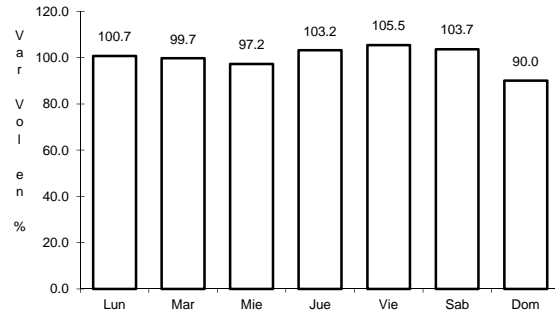
AÑO: 2015

LUGAR	ESTACION				CLASIFICACION VEHICULAR EN PORCIENTO														COORDENADAS	
	KM	TE	SC	TDPA	M	A	B	C2	C3	T3S2	T3S3	T3S2R4	OTROS	A	B	C	K'	D	LATITUD	LONGITUD
Ucum	0.00	3	0	3093	7.9	82.3	0.3	5.4	1.0	1.8	0.4	0.5	0.4	90.2	0.3	9.5	0.097	0.512	18.495149	-88.520750
T. Der. Ingenio Álvaro Obregón	31.00	1	0	1114	10.4	75.7	2.1	6.8	1.6	1.3	0.6	1.4	0.1	86.1	2.1	11.8	0.080	0.529	18.250140	-88.650103
T. Der. Ingenio Álvaro Obregón	31.00	3	0	1806	17.8	74.9	0.3	4.7	1.1	0.9	0.3	0.0	0.0	92.7	0.3	7.0	0.093	0.501	18.245334	-88.652480
T. Der. U. A. Galeras	75.00	1	0	161	7.3	73.8	1.4	16.0	0.9	0.4	0.2	0.0	0.0	81.1	1.4	17.5	0.112	0.562	17.989201	-88.848790
T. Der. U. A. Galeras	75.00	3	0	195	21.7	63.9	1.2	12.8	0.2	0.1	0.0	0.0	0.1	85.6	1.2	13.2	0.092	0.511	17.987067	-88.851702
Unión	88.00	1	0	495	24.2	68.1	0.1	7.1	0.0	0.5	0.0	0.0	0.0	92.3	0.1	7.6	0.103	0.545	17.908083	-88.881369

1 CARR: Francisco Escárcega - Chetumal

CLAVE: 00093

RUTA: MEX-186



Km: 0.00 Tipo: 3 Sent: 0

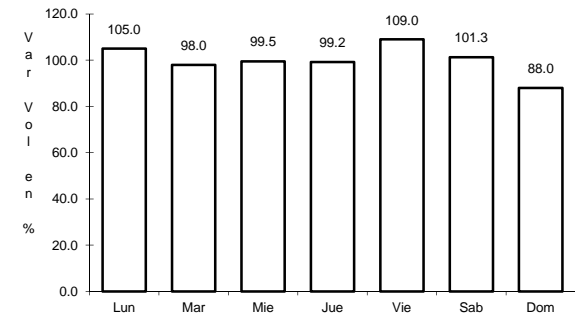
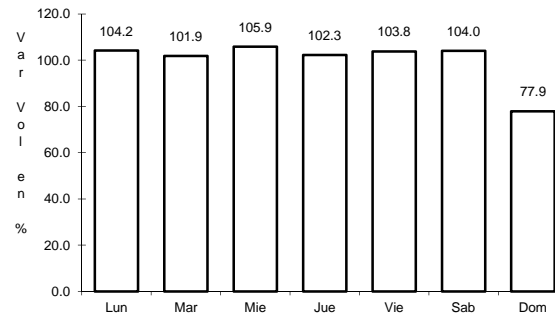
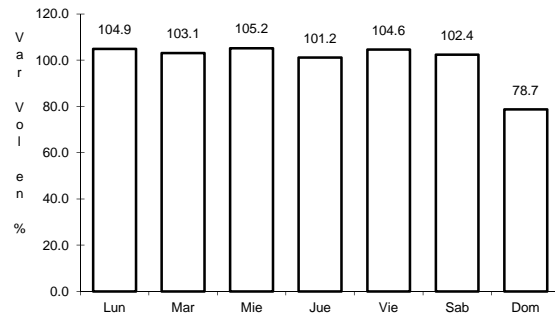
Km: 277.36 Tipo: 1 Sent: 1

Km: 277.36 Tipo: 1 Sent: 2

2 CARR: Mérida - Puerto Juárez

CLAVE: 00067

RUTA: MEX-180



Km: 5.60 Tipo: 1 Sent: 1

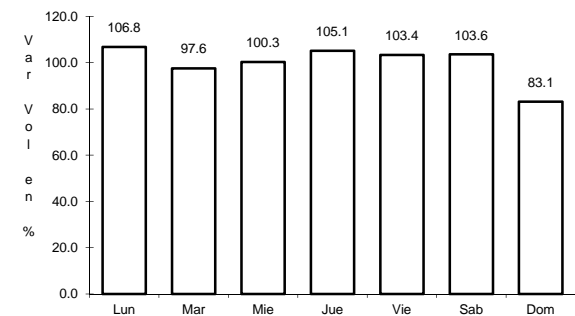
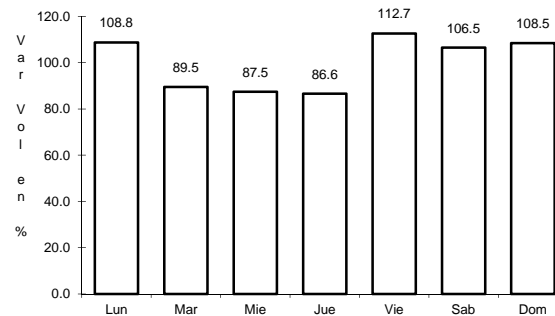
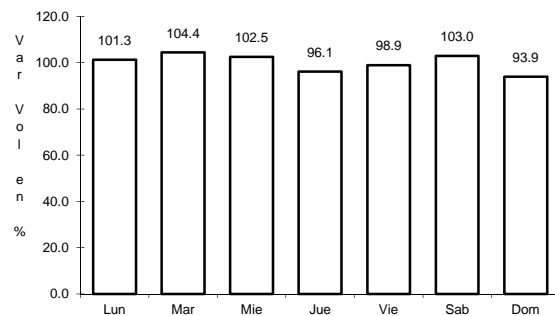
Km: 5.60 Tipo: 1 Sent: 2

Km: 160.68 Tipo: 1 Sent: 0

3 CARR: Muna - Felipe Carrillo Puerto

CLAVE: 00148

RUTA: MEX-184



Km: 0.00 Tipo: 3 Sent: 0

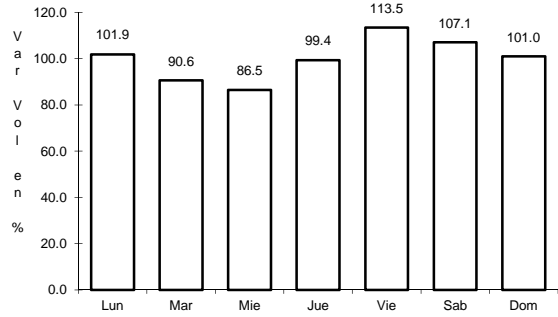
Km: 109.60 Tipo: 3 Sent: 0

Km: 216.97 Tipo: 1 Sent: 0

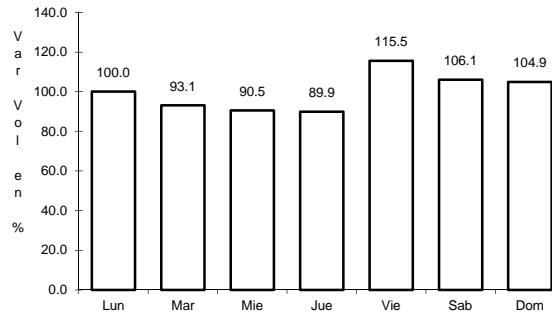
4 CARR: Polyuc - T. C. (Reforma Agraria - Puerto Juárez)

CLAVE: 23014

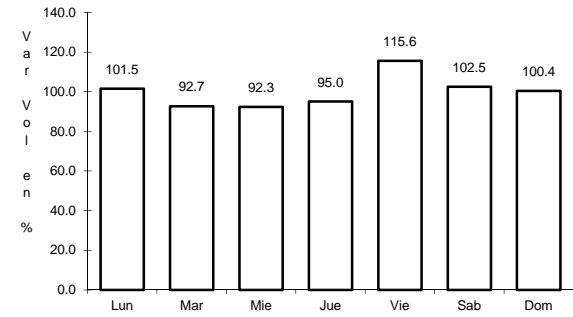
RUTA: MEX-293



Km: 0.00 Tipo: 3 Sent: 0



Km: 50.00 Tipo: 3 Sent: 0

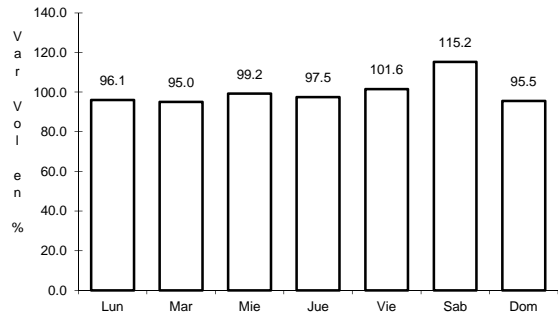


Km: 99.00 Tipo: 1 Sent: 0

5 CARR: Ramal a Puerto Morelos

CLAVE: 23569

RUTA: MEX

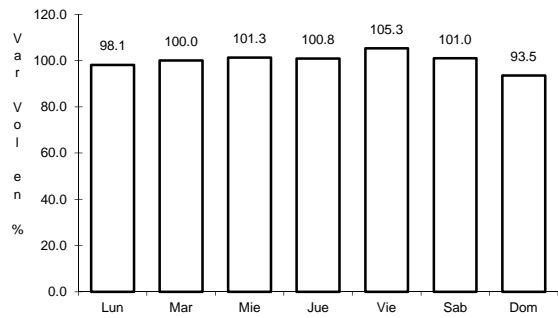


Km: 0.00 Tipo: 3 Sent: 0

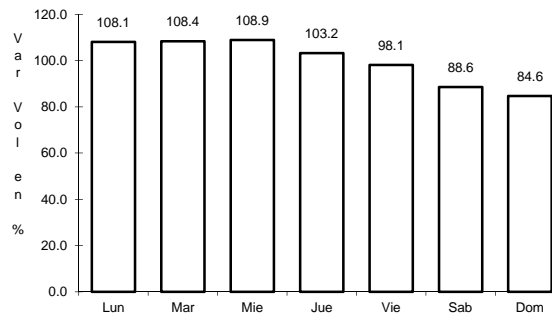
6 CARR: Ramal a Punta Piedra

CLAVE: 23575

RUTA: MEX



Km: 0.00 Tipo: 3 Sent: 1

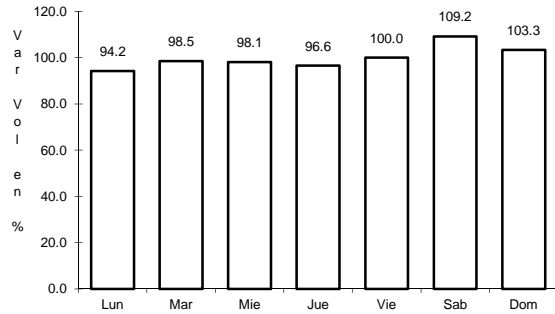


Km: 0.00 Tipo: 3 Sent: 2

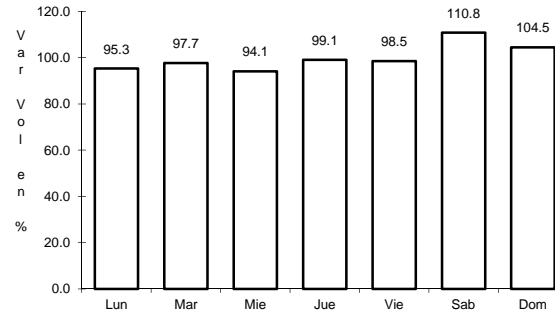
7 CARR: Ramal a Subteniente López

CLAVE: 23567

RUTA: MEX-186



Km: 0.00 Tipo: 3 Sent: 1

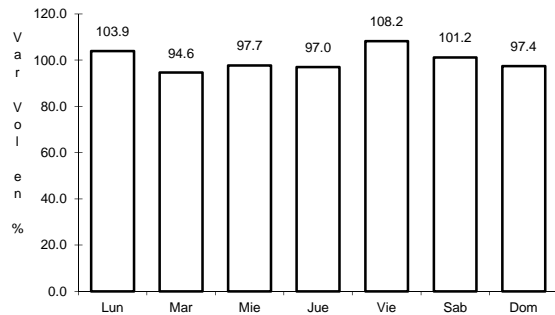


Km: 0.00 Tipo: 3 Sent: 2

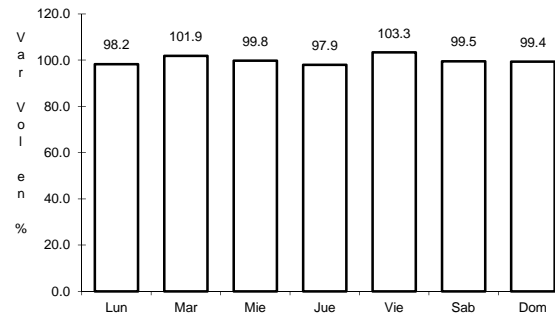
8 CARR: Reforma Agraria - Puerto Juárez

CLAVE: 23132

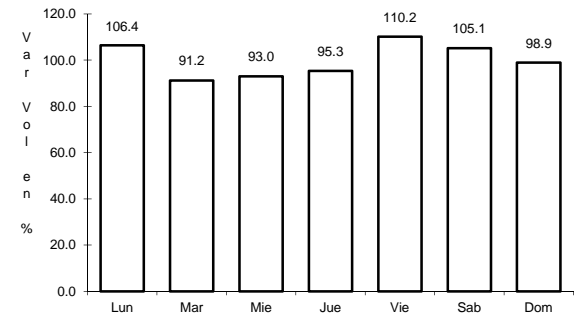
RUTA: MEX-307



Km: 0.00 Tipo: 3 Sent: 1



Km: 0.00 Tipo: 3 Sent: 2

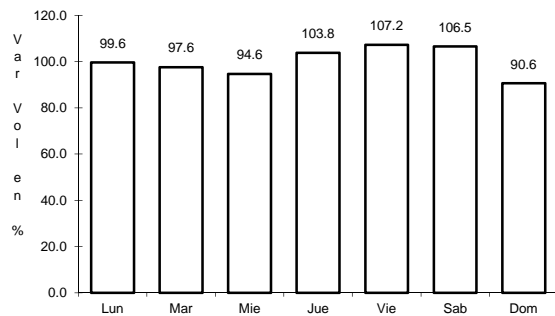


Km: 132.00 Tipo: 3 Sent: 0

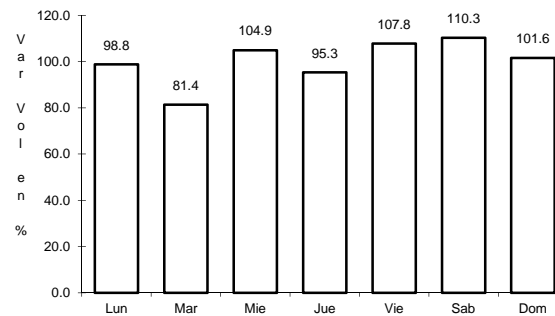
9 CARR: Valladolid - Felipe Carrillo Puerto

CLAVE: 00010

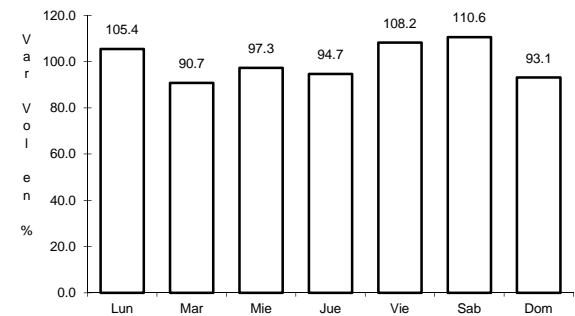
RUTA: MEX-295



Km: 0.00 Tipo: 3 Sent: 0



Km: 99.00 Tipo: 1 Sent: 0

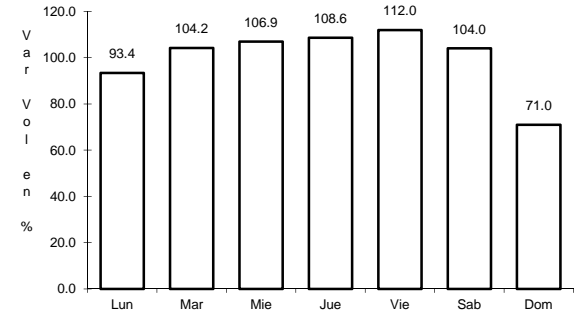
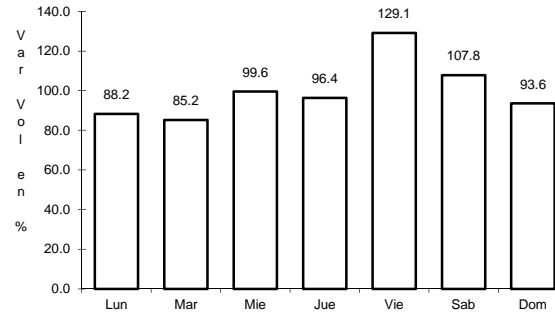
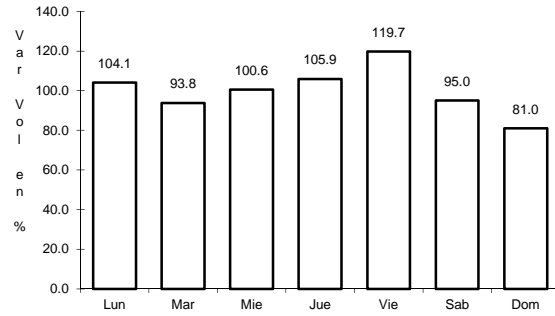


Km: 147.70 Tipo: 1 Sent: 0

10 CARR: Mérida - Cancún (Cuota)

CLAVE: 00071

RUTA: MEX-180D



Km: 51.00

Tipo: 1

Sent: 1

Km: 51.00

Tipo: 1

Sent: 2

Km: 308.10

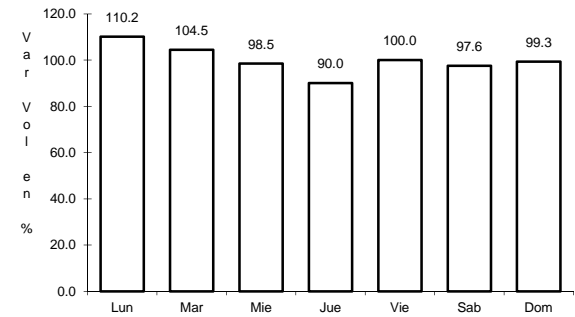
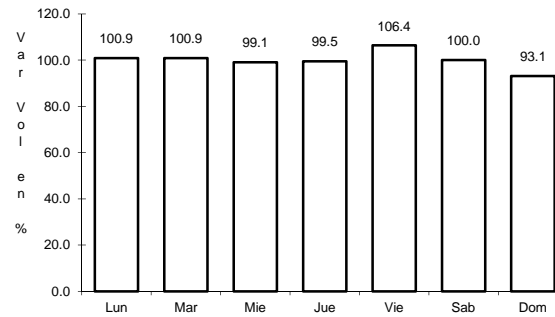
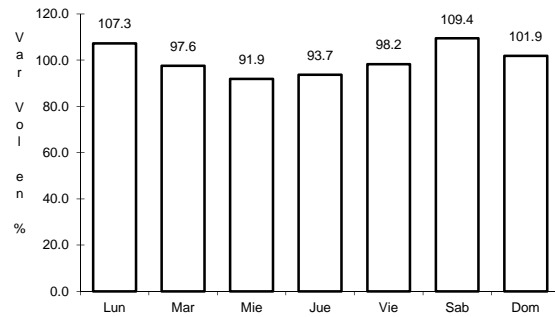
Tipo: 1

Sent: 0

11 CARR: Bacalar - Miguel Alemán

CLAVE: 20030

RUTA: QR



Km: 21.00

Tipo: 3

Sent: 0

Km: 31.00

Tipo: 1

Sent: 0

Km: 31.00

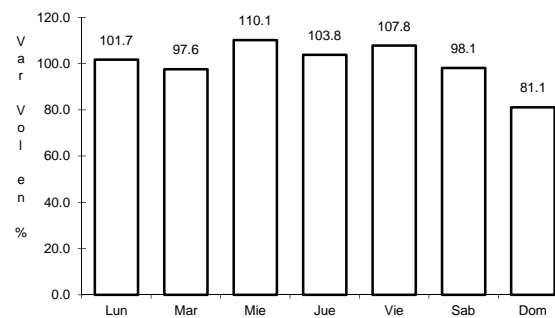
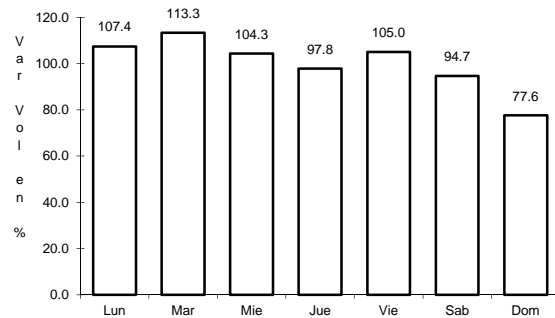
Tipo: 3

Sent: 0

12 CARR: Cancún - Punta Cancún

CLAVE: 23581

RUTA: QR



Km: 0.00

Tipo: 3

Sent: 1

Km: 0.00

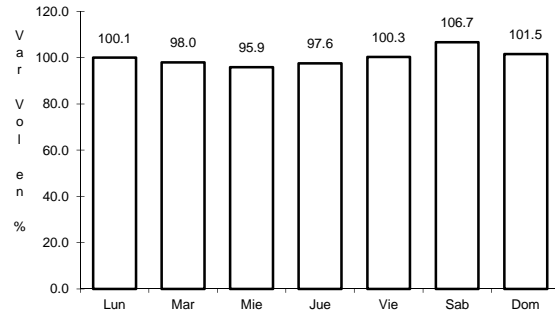
Tipo: 3

Sent: 2

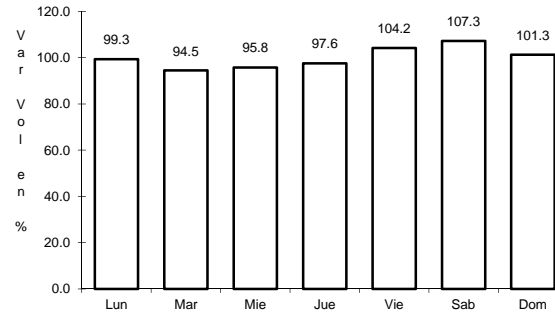
13 CARR: Chetumal - Calderitas

CLAVE: 23004

RUTA: QR-004



Km: 0.00 Tipo: 3 Sent: 1

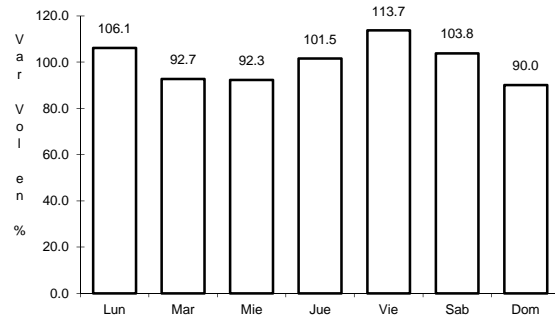


Km: 0.00 Tipo: 3 Sent: 2

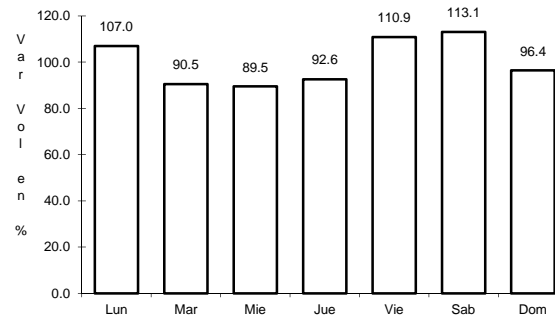
14 CARR: El Ideal - Chiquila

CLAVE: 23005

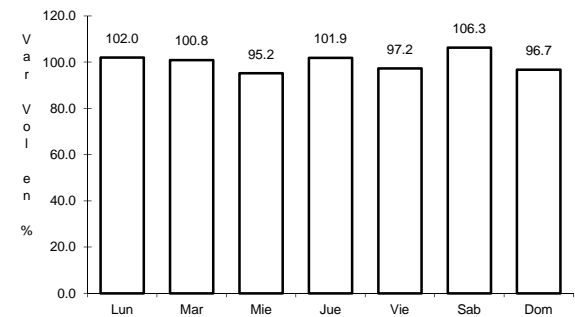
RUTA: QR-005



Km: 0.00 Tipo: 3 Sent: 0



Km: 31.20 Tipo: 1 Sent: 0

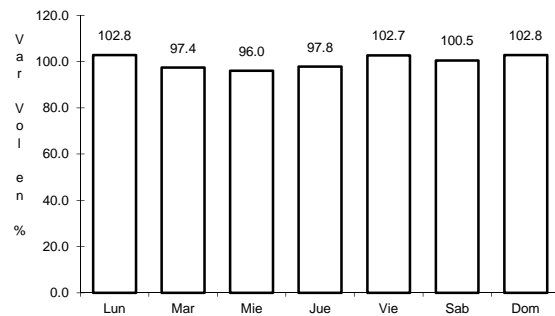


Km: 75.60 Tipo: 1 Sent: 0

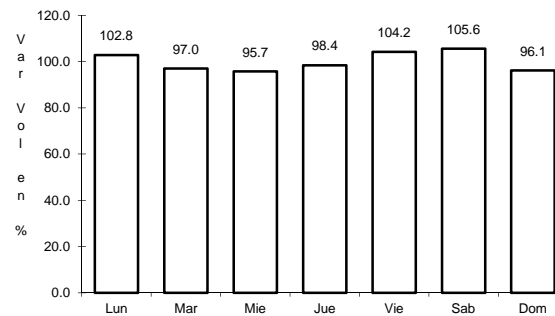
15 CARR: Libramiento de Chetumal

CLAVE: 23130

RUTA: QR



Km: 0.00 Tipo: 3 Sent: 1

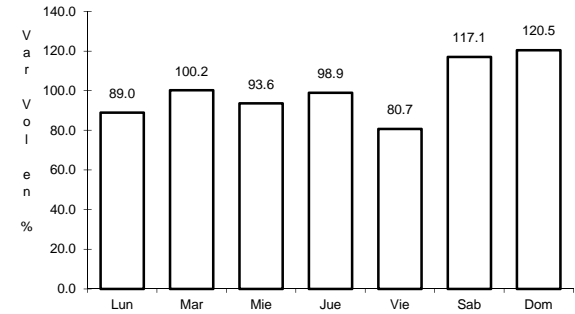
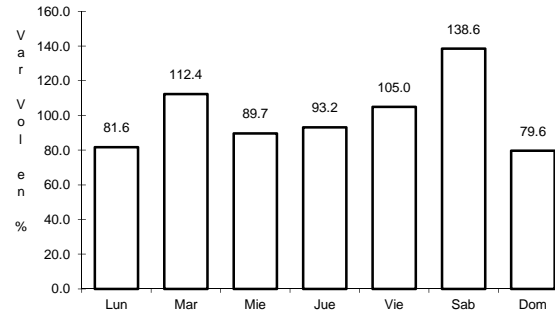
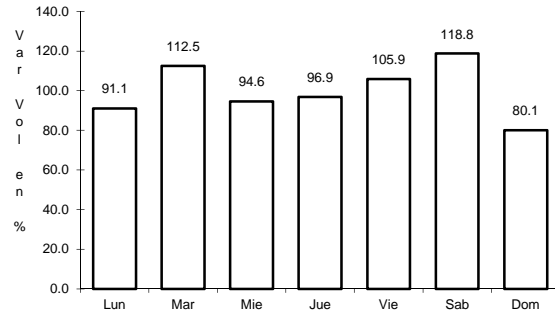


Km: 0.00 Tipo: 3 Sent: 2

16 CARR: Perimetral Cozumel

CLAVE: 00148

RUTA: QR



Km: 0.00 Tipo: 3 Sent: 0

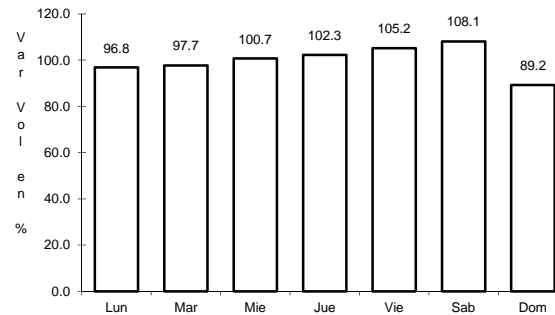
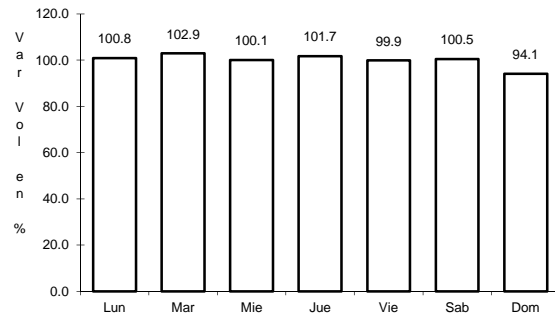
Km: 13.40 Tipo: 3 Sent: 1

Km: 13.40 Tipo: 3 Sent: 2

17 CARR: Punta Nizuc - Cancún

CLAVE: 23014

RUTA: QR



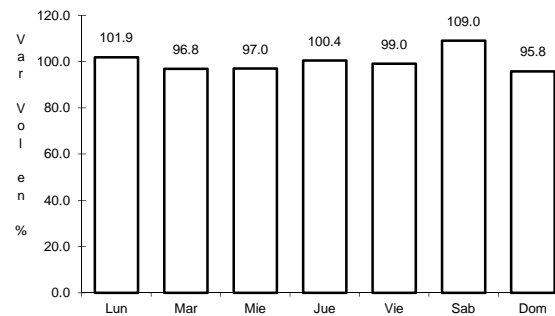
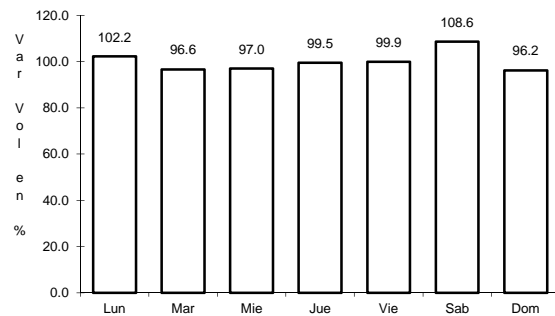
Km: 0.00 Tipo: 3 Sent: 1

Km: 0.00 Tipo: 3 Sent: 2

18 CARR: Ramal a Aeropuerto Cancún

CLAVE: 23574

RUTA: QR



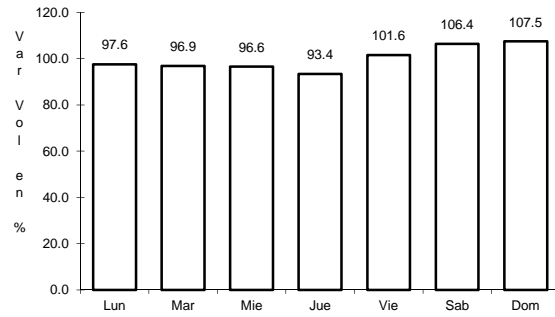
Km: 0.00 Tipo: 3 Sent: 1

Km: 0.00 Tipo: 3 Sent: 2

19 CARR: Ramal a Candelaria

CLAVE: 23027

RUTA: QR



Km: 0.00

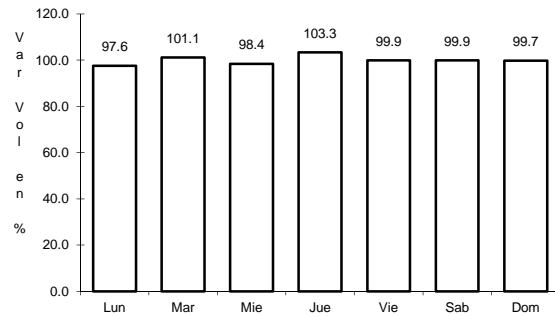
Tipo: 3

Sent: 0

20 CARR: Ramal a El Naranjal

CLAVE: 23579

RUTA: QR



Km: 0.00

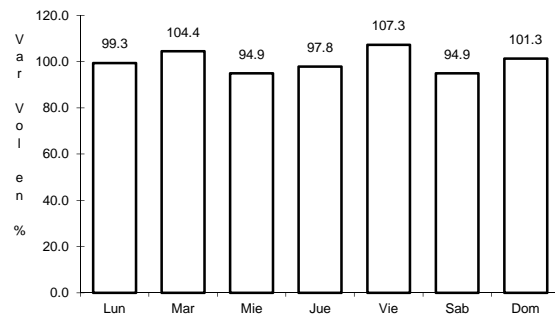
Tipo: 3

Sent: 0

21 CARR: Ramal a Laguna de Kaná

CLAVE: 23213

RUTA: QR



Km: 0.00

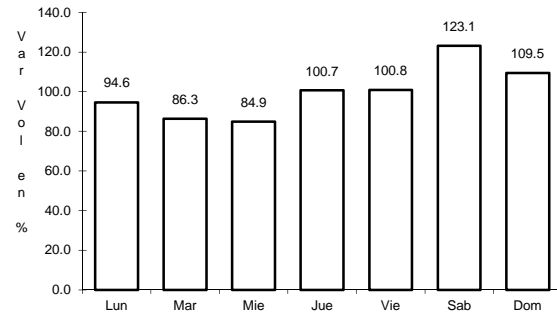
Tipo: 3

Sent: 0

22 CARR: Ramal a Mahahual

CLAVE: 23583

RUTA: QR



Km: 0.00

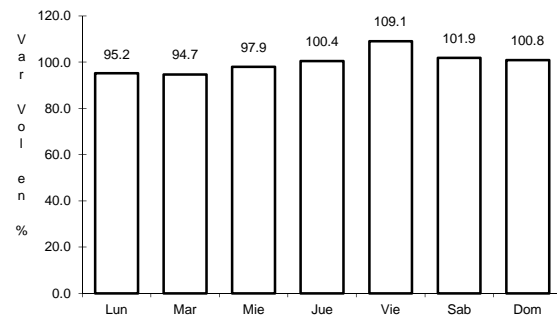
Tipo: 3

Sent: 0

23 CARR: Ramal a Petcacab

CLAVE: 23018

RUTA: QR-018



Km: 0.00

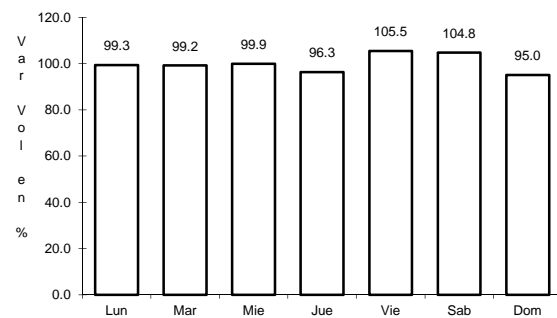
Tipo: 3

Sent: 0

24 CARR: Ramal a Punta Allen

CLAVE: 23015

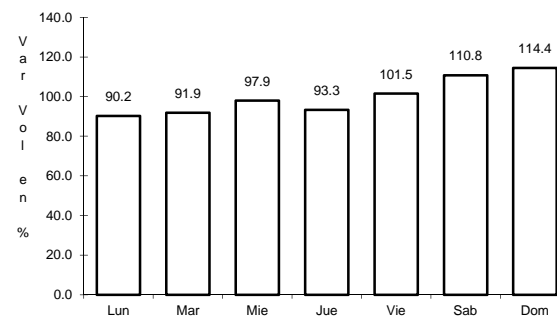
RUTA: QR-015



Km: 0.00

Tipo: 3

Sent: 0



Km: 10.20

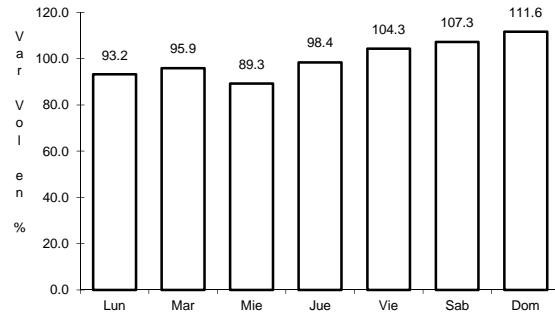
Tipo: 1

Sent: 0

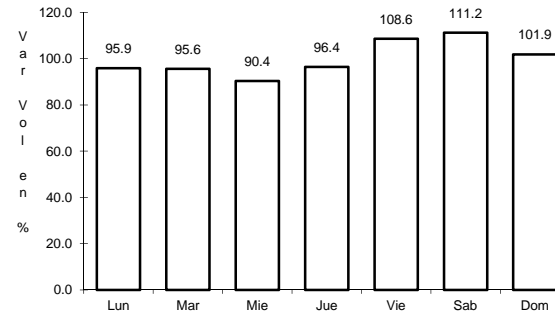
25 CARR: Ramal a Punta Sam

CLAVE: 23582

RUTA: QR



Km: 0.00 Tipo: 3 Sent: 0

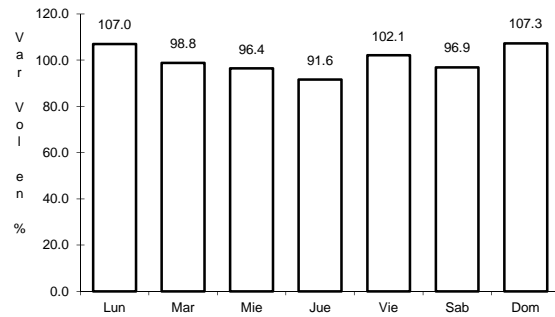


Km: 5.00 Tipo: 1 Sent: 0

26 CARR: Ramal a Reforma

CLAVE: 23016

RUTA: QR-016

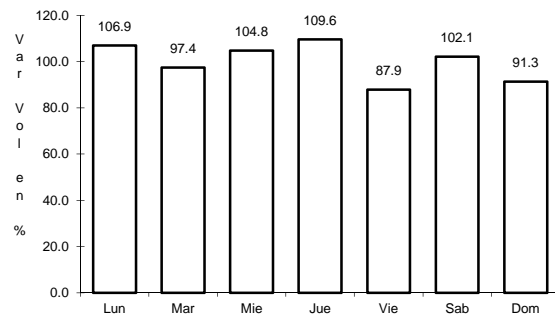


Km: 0.00 Tipo: 3 Sent: 0

27 CARR: Ramal a Tres Garantías

CLAVE: 23585

RUTA: QR

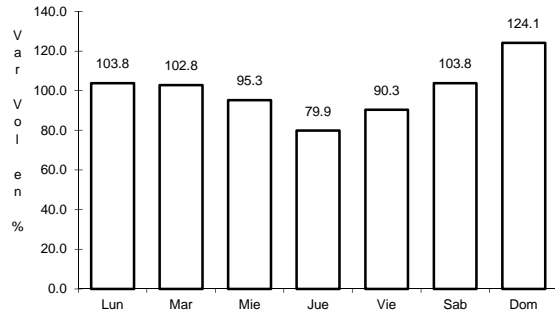


Km: 0.00 Tipo: 3 Sent: 0

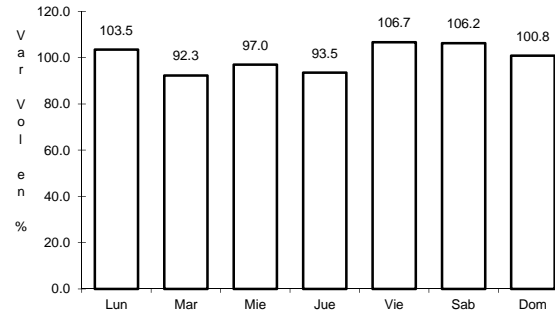
28 CARR: Tihosuco - Dziuche

CLAVE: 23576

RUTA: QR



Km: 0.00 Tipo: 3 Sent: 0

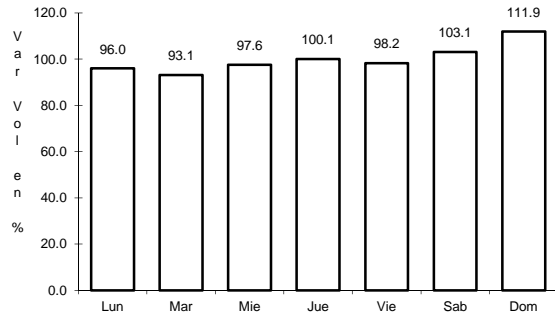


Km: 60.50 Tipo: 1 Sent: 0

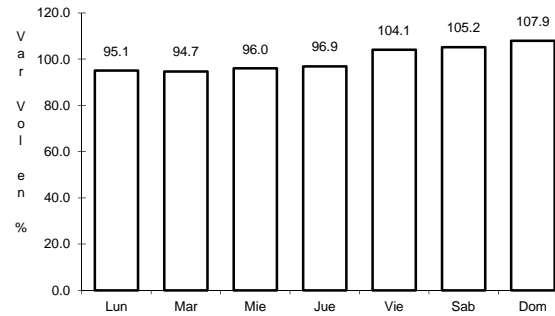
29 CARR: Transversal de Cozumel

CLAVE: 23577

RUTA: QR



Km: 0.00 Tipo: 3 Sent: 1

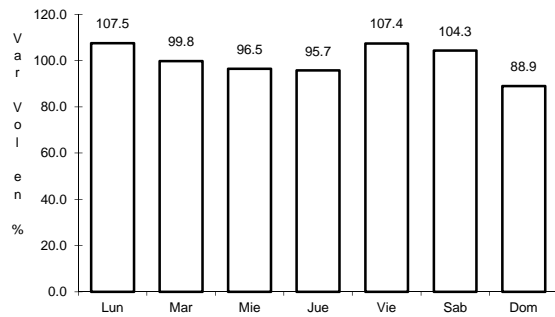


Km: 0.00 Tipo: 3 Sent: 2

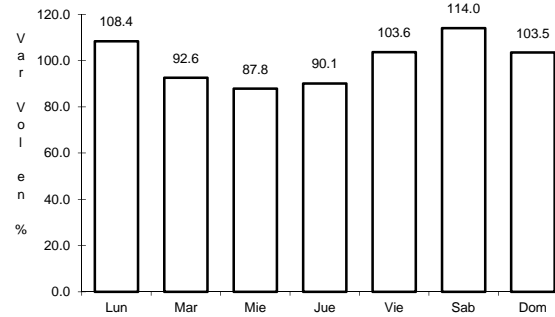
30 CARR: Tulum - Nuevo X-Can

CLAVE: 23570

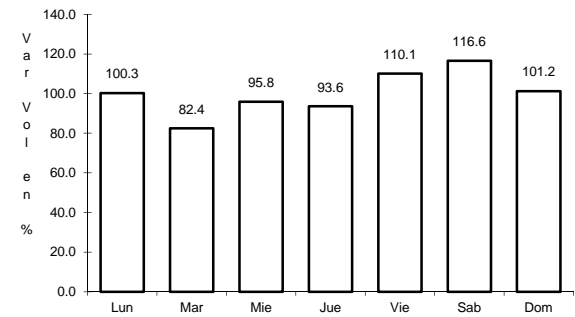
RUTA: QR



Km: 0.00 Tipo: 3 Sent: 0

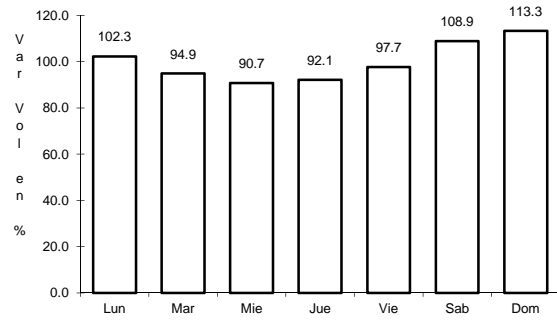


Km: 42.95 Tipo: 1 Sent: 0



Km: 87.40 Tipo: 1 Sent: 0

31 CARR: Ucum - Unión

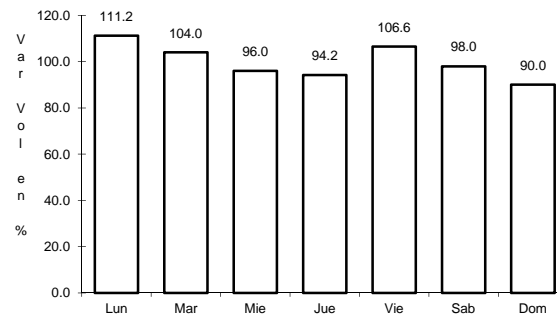


Km: 0.00

Tipo: 3

Sent: 0

CLAVE: 23571

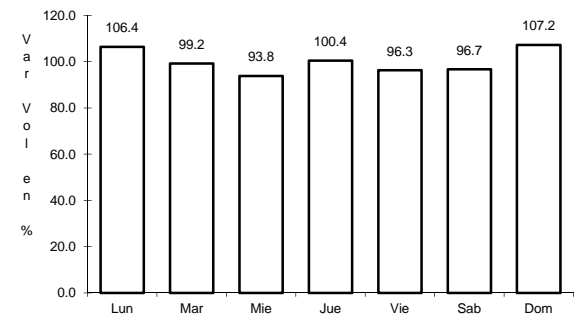


Km: 31.00

Tipo: 3

Sent: 0

RUTA: QR



Km: 88.00

Tipo: 1

Sent: 0