

PUEBLA

NO. INDICE	CARRETERA	RUTA
---RED FEDERAL LIBRE---		
1	Amozoc - Teziutlán	MEX-129
2	Apizaco - Tejocotal	MEX-119
3	Los Reyes - Zacatepec	MEX-136
4	México - Puebla (Libre)	MEX-150
5	Pachuca - Tuxpam	MEX-130
6	Puebla - Belem	MEX-121
7	Puebla - Huajuapán de León	MEX-190
8	Puebla - Tehuacán	MEX-150
9	Puebla - Tlaxcala	MEX-119
10	Ramal a Nuevo Necaxa	MEX-130
11	San Hipólito - Xalapa	MEX-140
12	San Martín Texmelucan - Tlaxcala	MEX-117
13	San Salvador El Seco - Azumbilla	MEX-144
14	Santa Bárbara - Izúcar de Matamoros	MEX-115-160
15	Tehuacán - Córdoba	MEX-150
16	Tehuacán - Huajuapán de León	MEX-125
17	Teziutlán - Nautla	MEX-129
18	Teziutlán - Perote	MEX-131
19	Zacatepec - Oriental	MEX-136
---RED FEDERAL DE CUOTA---		
20	Acatzingo - Cd. Mendoza (Cuota)	MEX-150D
21	Amozoc - Perote (Cuota)	MEX-140D
22	Cuacnopalan - Oaxaca (Cuota)	MEX-135D
23	Ent. Tulancingo - Venta Grande (Cuota)	MEX-132D
24	Libramiento de San Martín Texmelucan	MEX-057D
25	México - Puebla (Cuota)	MEX-150D
26	Puebla - Acatzingo (Cuota)	MEX-150D
27	San Martín Texmelucan - Tlaxcala - El Molinito (Cuota)	MEX-117D
28	Tejocotal - Nuevo Necaxa (Cuota)	MEX-132D
---RED ESTATAL LIBRE---		
29	Amayuca - Izúcar de Matamoros	MOR-031-PUE
30	Azumbilla - Alcomunga	PUE
31	Cholula - Puebla (Vía Quetzalcóatl)	PUE
32	Cuacnopalan - Santa Catarina Los Reyes	PUE
33	Cuapixtla - Acatlán de Osorio	PUE
34	Izúcar de Matamoros - Tepexi de Rodríguez	PUE
35	Ramal a Aeropuerto Hnos. Serdán	PUE
36	Ramal a Jolalpan	MOR-PUE
37	Ramal a Tetela de Ocampo	PUE
38	Ramal a Zihuateutla	PUE
39	Ramal a Zoquitlán	PUE
40	San Juan Ixcaquixtla - Pino Suárez	PUE
41	Tecamachalco - Cañada Morelos	PUE
42	Tecamachalco - Quecholac	PUE
43	Zacatlán - Zapotitlán	PUE
---RED ESTATAL DE CUOTA---		
44	Atlixco - Jantetelco (Cuota)	PUE-D
45	Libres - Teziutlán (Cuota)	PUE-D
46	Puebla - Atlixco (Cuota)	PUE-D
47	Tlaxco - Tejocotal (Cuota)	PUE-D
---CARRETERAS INTEGRADAS POR TRAMOS FEDERALES Y ESTATALES---		
48	Ramal a Tulcingo del Valle	PUE-MEX-093
49	Tehuacán - Huitzo	PUE-MEX-135
50	Teotitlán de Flores Magón - Tuxtepec	OAX-PUE-MEX-182

PUEBLA

1 CARR: Amozoc - Teziutlán

CLAVE: 00210

RUTA: MEX-129

AÑO: 2015

LUGAR	ESTACION				CLASIFICACION VEHICULAR EN PORCIENTO										COORDENADAS					
	KM	TE	SC	TDPA	M	A	B	C2	C3	T3S2	T3S3	T3S2R4	OTROS	A	B	C	K'	D	LATITUD	LONGITUD
Amozoc	0.00																			
X. C. Puebla - Córdoba (Cuota)	1.40	3	0	10373	0.7	70.3	3.4	13.4	3.0	5.1	2.6	0.7	0.8	71.0	3.4	25.6	0.082	0.511	19.052427	-98.026017
Acajete	12.00	3	0	8045	1.2	72.0	1.4	11.2	3.0	5.8	2.9	1.1	1.4	73.2	1.4	25.4	0.072	0.506	19.115749	-97.945634
Rafael Lara Grajales	35.50	1	0	5377	1.8	71.9	2.9	8.3	5.4	4.4	3.1	1.2	1.0	73.7	2.9	23.4	0.071	0.516	19.235756	-97.806910
Rafael Lara Grajales	35.50	3	0	6932	1.9	79.1	2.0	5.9	3.4	4.4	1.9	0.6	0.8	81.0	2.0	17.0	0.088	0.505	19.235978	-97.778331
Lim. Edos. Term. Pue. Ppia. Tlax.	50.54																			
X. C. Los Reyes - Zacatepec	56.31	1	0	3491	1.3	72.5	3.4	6.8	7.0	4.7	3.2	0.8	0.3	73.8	3.4	22.8	0.070	0.501	19.313713	-97.656018
Lim. Edos. Term. Tlax. Ppia. Pue.	60.22																			
Oriental	62.62	1	0	4827	1.7	83.4	1.9	5.1	1.1	3.1	2.1	0.6	1.0	85.1	1.9	13.0	0.087	0.536	19.363497	-97.630743
Oriental	62.62	3	0	6463	2.2	81.7	2.3	6.8	1.8	3.5	1.2	0.2	0.3	83.9	2.3	13.8	0.077	0.520	19.383231	-97.619079
X. C. Amozoc - Perote (Cuota)	69.00	1	1	3616	2.2	84.6	2.2	7.0	1.5	1.1	1.1	0.1	0.2	86.8	2.2	11.0	0.086	0.510	19.416096	-97.639241
X. C. Amozoc - Perote (Cuota)	69.00	1	2	3472	2.1	83.8	2.5	7.1	1.7	1.3	1.2	0.1	0.2	85.9	2.5	11.6	0.079	0.510	19.416093	-97.639247
X. C. Amozoc - Perote (Cuota)	69.00	3	0	8049	1.5	81.5	2.4	7.4	1.8	3.2	1.4	0.2	0.6	83.0	2.4	14.6	0.080	0.502	19.420492	-97.644471
Libres	76.35	3	0	7898	1.2	82.6	2.3	7.1	1.8	3.2	1.1	0.1	0.6	83.8	2.3	13.9	0.076	0.505	19.485847	-97.670720
San Miguel Tenextatiloyán	106.70	1	0	3732	1.2	80.9	2.9	7.5	2.3	2.6	1.8	0.2	0.6	82.1	2.9	15.0	0.076	0.509	19.705366	-97.597669
T. Izq. Zacapoaxtla	114.80	1	0	6911	1.9	84.4	2.0	5.1	1.2	3.5	0.9	0.2	0.8	86.3	2.0	11.7	0.069	0.504	19.760217	-97.567686
T. Izq. Zacapoaxtla	114.80	3	0	9542	1.8	84.2	1.7	4.9	0.6	5.1	0.6	0.2	0.9	86.0	1.7	12.3	0.066	0.503	19.764678	-97.563991
Zaragoza	116.80	3	0	7620	1.8	85.5	2.4	5.8	0.6	3.0	0.4	0.1	0.4	87.3	2.4	10.3	0.065	0.500	19.782468	-97.544545
Teziutlán	157.80	1	0	11575	2.3	80.7	1.2	8.4	0.5	5.3	0.5	0.2	0.9	83.0	1.2	15.8	0.067	0.514	19.817485	-97.379775

2 CARR: Apizaco - Tejocotal

CLAVE: 00430

RUTA: MEX-119

AÑO: 2015

LUGAR	ESTACION				CLASIFICACION VEHICULAR EN PORCIENTO										COORDENADAS					
	KM	TE	SC	TDPA	M	A	B	C2	C3	T3S2	T3S3	T3S2R4	OTROS	A	B	C	K'	D	LATITUD	LONGITUD
Apizaco	0.00	3	1	9599	1.0	83.3	1.9	8.8	0.9	2.0	1.2	0.4	0.5	84.3	1.9	13.8	0.083	0.515	19.428158	-98.136120
Apizaco	0.00	3	2	10213	1.4	81.0	2.1	10.1	1.0	2.3	1.2	0.4	0.5	82.4	2.1	15.5	0.084	0.515	19.428150	-98.136122
T. Der. Tetla	6.60	3	0	16095	0.7	83.7	1.9	7.9	1.3	2.6	1.1	0.5	0.3	84.4	1.9	13.7	0.076	0.508	19.469050	-98.111827
T. Izq. Atlangatepec	12.15	1	0	12335	0.8	78.5	2.1	9.5	1.5	4.7	1.6	0.5	0.8	79.3	2.1	18.6	0.066	0.509	19.511267	-98.117853
Tlaxco	23.91	1	0	8505	1.9	82.4	0.7	9.0	0.6	4.3	0.4	0.1	0.6	84.3	0.7	15.0	0.063	0.509	19.605490	-98.122530
Tlaxco	23.91	3	0	5523	1.4	77.0	1.4	11.5	1.4	4.4	2.0	0.2	0.7	78.4	1.4	20.2	0.070	0.511	19.624722	-98.125649
Lim. Edos. Term. Tlax. Ppia. Pue.	34.45																			
T. Der. Tetela de Ocampo	52.20	1	0	6976	2.0	80.9	0.6	8.5	1.3	4.3	1.5	0.3	0.6	82.9	0.6	16.5	0.075	0.509	19.802057	-98.025816
Zacatlán	71.25	1	0	11207	2.8	82.0	1.0	5.9	0.6	4.7	1.5	0.5	1.0	84.8	1.0	14.2	0.066	0.502	19.914966	-97.958513
Lim. Edos. Term. Pue. Ppia. Hgo.	110.45																			
T. C. Pachuca - Tuxpam	113.15	1	0	6956	0.2	82.6	3.4	6.0	2.7	2.9	1.7	0.4	0.1	82.8	3.4	13.8	0.115	0.501	20.124410	-98.128427

PUEBLA

3 CARR : Los Reyes - Zacatepec

CLAVE: 00052

ruta: MEX-136

AÑO : 2015

LUGAR	ESTACION				CLASIFICACION VEHICULAR EN PORCIENTO										COORDENADAS					
	KM	TE	SC	TDPA	M	A	B	C2	C3	T3S2	T3S3	T3S2R4	OTROS	A	B	C	K'	D	LATITUD	LONGITUD
T. C. México - Puebla (Libre)	0.00																			
T. Izq. La Magdalena	3.35	3	1	46183	1.3	87.4	0.4	4.8	1.2	1.8	2.0	0.5	0.6	88.7	0.4	10.9	0.053	0.534	19.371610	-98.945990
T. Izq. La Magdalena	3.35	3	2	52926	1.6	86.5	0.4	5.1	1.2	1.9	2.2	0.5	0.6	88.1	0.4	11.5	0.057	0.534	19.371610	-98.945990
T. Izq. Chimalhuacán	8.45	1	1	35352	2.5	83.6	0.9	4.1	1.4	2.7	2.9	0.9	1.0	86.1	0.9	13.0	0.058	0.504	19.411830	-98.921300
T. Izq. Chimalhuacán	8.45	1	2	34550	2.4	82.7	1.0	4.3	1.5	2.8	3.3	1.0	1.0	85.1	1.0	13.9	0.054	0.504	19.411830	-98.921300
T. C. San Bernardino - Tepexpan	17.00	3	1	12159	0.1	84.5	1.9	7.2	2.4	1.6	1.1	1.0	0.2	84.6	1.9	13.5	0.064	0.530	19.478830	-98.890000
T. C. San Bernardino - Tepexpan	17.00	3	2	13699	0.1	86.2	1.4	7.3	1.6	1.8	1.0	0.4	0.2	86.3	1.4	12.3	0.066	0.530	19.478830	-98.890000
Texcoco	23.02	3	1	18332	0.0	83.6	2.7	5.3	2.1	4.2	1.1	0.8	0.2	83.6	2.7	13.7	0.068	0.504	19.525390	-98.861370
Texcoco	23.02	3	2	18619	0.0	81.6	3.1	6.1	2.6	4.0	1.3	1.1	0.2	81.6	3.1	15.3	0.062	0.504	19.525390	-98.861370
T. Izq. Tepetlaoxtoc	30.03	1	1	14102	0.1	83.2	2.8	4.7	2.0	4.5	1.5	1.1	0.1	83.3	2.8	13.9	0.070	0.508	19.545890	-98.826160
T. Izq. Tepetlaoxtoc	30.03	1	2	14568	0.1	82.1	3.4	4.8	2.3	4.6	1.6	0.9	0.2	82.2	3.4	14.4	0.070	0.508	19.545890	-98.826160
T. Der. Totolapan	42.00	3	1	6448	0.1	79.4	2.5	5.7	2.5	5.6	2.6	1.4	0.2	79.5	2.5	18.0	0.078	0.507	19.557020	-98.730670
T. Der. Totolapan	42.00	3	2	6627	0.1	79.7	3.4	6.8	2.5	4.8	1.7	0.8	0.2	79.8	3.4	16.8	0.109	0.507	19.557020	-98.730670
Lim. Edos. Term. Mex. Ppia. Tlax.	43.15																			
Calpulalpan	59.58	3	0	18159	0.8	72.5	3.1	8.8	2.2	8.4	2.2	1.6	0.4	73.3	3.1	23.6	0.068	0.509	19.588258	-98.550954
T. Der. Nanacamilpa	71.76	3	0	13327	0.9	60.4	4.0	8.9	4.5	14.1	3.1	3.0	1.1	61.3	4.0	34.7	0.070	0.510	19.526433	-98.480078
X. C. Arco Norte de La Ciudad de México	73.80	3	1	7087	0.8	66.9	3.3	6.2	3.8	11.7	3.9	2.8	0.6	67.7	3.3	29.0	0.068	0.516	19.513737	-98.457289
X. C. Arco Norte de La Ciudad de México	73.80	3	2	7560	0.6	62.3	3.9	7.5	4.2	13.4	4.4	3.0	0.7	62.9	3.9	33.2	0.092	0.516	19.513732	-98.457304
Hueyotlilpan	88.21	3	1	7373	0.9	65.6	3.2	7.9	3.5	11.6	3.4	2.9	1.0	66.5	3.2	30.3	0.079	0.506	19.467876	-98.328784
Hueyotlilpan	88.21	3	2	7563	0.6	62.7	3.7	8.4	3.9	12.6	3.8	3.2	1.1	63.3	3.7	33.0	0.094	0.506	19.467877	-98.328786
Xaltocan	108.10	1	1	8617	0.7	65.8	3.2	9.2	3.1	11.2	3.1	2.8	0.9	66.5	3.2	30.3	0.073	0.502	19.428164	-98.224148
Xaltocan	108.10	1	2	8566	0.5	62.4	3.9	10.2	3.4	12.3	3.4	3.0	0.9	62.9	3.9	33.2	0.071	0.502	19.428161	-98.224152
Apizaco	117.74	1	1	22737	0.9	86.9	0.6	5.9	0.6	1.8	2.4	0.4	0.5	87.8	0.6	11.6	0.064	0.525	19.413224	-98.163413
Apizaco	117.74	1	2	20598	0.9	86.1	0.7	6.1	0.6	2.1	2.6	0.4	0.5	87.0	0.7	12.3	0.060	0.525	19.413223	-98.163417
Apizaco	117.74	3	0	21874	1.8	86.5	0.9	7.4	0.8	0.8	1.0	0.5	0.3	88.3	0.9	10.8	0.057	0.517	19.412784	-98.133650
T. Der. Cuaxomulco	119.85	3	1	10757	2.0	88.4	0.7	4.8	0.6	1.4	1.2	0.5	0.4	90.4	0.7	8.9	0.063	0.515	19.410530	-98.109268
T. Der. Cuaxomulco	119.85	3	2	11433	2.3	87.1	0.7	5.3	0.7	1.6	1.3	0.6	0.4	89.4	0.7	9.9	0.064	0.515	19.410523	-98.109261
T. Izq. Xalostoc	126.67	3	1	10756	0.6	73.1	3.3	9.2	2.5	5.9	2.7	2.0	0.7	73.7	3.3	23.0	0.084	0.511	19.390005	-98.053339
T. Izq. Xalostoc	126.67	3	2	10302	0.6	70.2	3.7	10.1	2.7	6.6	3.0	2.2	0.9	70.8	3.7	25.5	0.079	0.511	19.390021	-98.053380
T. Izq. Libramiento de Huamantla	141.70	1	1	10429	0.6	74.7	3.1	8.0	2.3	6.2	2.6	1.7	0.8	75.3	3.1	21.6	0.078	0.504	19.320394	-97.945789
T. Izq. Libramiento de Huamantla	141.70	1	2	10271	0.8	71.2	3.6	9.3	2.7	6.5	2.9	2.0	1.0	72.0	3.6	24.4	0.082	0.504	19.320395	-97.945780
Huamantla	143.02	3	1	7590	0.8	68.0	4.3	10.0	2.3	8.1	3.4	2.2	0.9	68.8	4.3	26.9	0.090	0.502	19.315424	-97.884473
Huamantla	143.02	3	2	7660	0.9	63.9	5.1	11.3	2.5	9.2	3.6	2.6	0.9	64.8	5.1	30.1	0.088	0.502	19.315423	-97.884472
X. C. Amozoc - Perote (Cuota)	156.76	1	1	7460	1.0	68.4	4.0	9.1	2.6	8.0	3.4	2.5	1.0	69.4	4.0	26.6	0.081	0.508	19.308498	-97.810141
X. C. Amozoc - Perote (Cuota)	156.76	1	2	7224	1.0	64.4	4.3	10.2	2.8	9.5	4.0	2.8	1.0	65.4	4.3	30.3	0.087	0.508	19.308498	-97.810138

PUEBLA

3 CARR : Los Reyes - Zacatepec

CLAVE: 00052

RUTA: MEX-136

AÑO : 2015

LUGAR	ESTACION				CLASIFICACION VEHICULAR EN PORCIENTO														COORDENADAS	
	KM	TE	SC	TDPA	M	A	B	C2	C3	T3S2	T3S3	T3S2R4	OTROS	A	B	C	K'	D	LATITUD	LONGITUD
T. Der. Cuapiaxtla	159.40	1	0	10666	1.0	55.0	4.1	12.4	4.3	13.3	5.4	3.8	0.7	56.0	4.1	39.9	0.063	0.514	19.303401	-97.779740
X. C. Amozoc - Teziutlán	173.47	1	0	10324	1.3	61.2	2.7	8.8	4.1	12.6	4.5	3.8	1.0	62.5	2.7	34.8	0.070	0.515	19.327043	-97.652958
X. C. Amozoc - Teziutlán	173.47	3	0	6891	0.9	46.5	4.3	6.4	8.0	19.8	7.7	5.5	0.9	47.4	4.3	48.3	0.060	0.518	19.316080	-97.632832
Lim. Edos. Term. Tlax. Ppia. Pue.	177.57																			
Zacatepec	187.67	1	0	6985	0.3	42.2	4.8	9.7	7.9	21.2	7.4	5.8	0.7	42.5	4.8	52.7	0.058	0.516	19.268505	-97.535445

4 CARR : México - Puebla (Libre)

CLAVE: 00449

RUTA: MEX-150

AÑO : 2015

LUGAR	ESTACION				CLASIFICACION VEHICULAR EN PORCIENTO														COORDENADAS	
	KM	TE	SC	TDPA	M	A	B	C2	C3	T3S2	T3S3	T3S2R4	OTROS	A	B	C	K'	D	LATITUD	LONGITUD
México	0.00																			
Lim. Edos. Term. D. F. Ppia. Mex.	18.66																			
T. Der. Chalco	28.85	1	1	33250	1.0	89.1	0.8	4.2	1.3	0.9	2.0	0.3	0.4	90.1	0.8	9.1	0.054	0.500	19.311010	-98.905040
T. Der. Chalco	28.85	1	2	31031	1.1	88.0	0.8	4.6	1.5	1.1	2.2	0.3	0.4	89.1	0.8	10.1	0.058	0.500	19.311010	-98.905040
T. Der. Chalco	28.85	3	1	14518	0.1	88.7	1.7	4.8	2.1	1.1	0.6	0.6	0.3	88.8	1.7	9.5	0.063	0.511	19.312310	-98.896270
T. Der. Chalco	28.85	3	2	15197	0.0	87.4	2.2	5.2	2.3	1.1	0.7	0.8	0.3	87.4	2.2	10.4	0.069	0.511	19.312310	-98.896270
Ixtapaluca	31.06	3	1	19702	0.0	87.5	1.4	5.6	2.6	1.4	0.6	0.7	0.2	87.5	1.4	11.1	0.064	0.504	19.315810	-98.874950
Ixtapaluca	31.06	3	2	20041	0.0	89.1	1.7	4.6	1.5	1.4	0.6	0.9	0.2	89.1	1.7	9.2	0.062	0.504	19.315810	-98.874950
T. Der. C. México - Puebla (Cuota) (Río Frío)	62.06	1	0	2959	0.3	71.3	6.0	8.7	3.9	5.9	2.5	1.2	0.2	71.6	6.0	22.4	0.071	0.509	19.348790	-98.671680
T. Der. C. México - Puebla (Cuota) (Río Frío)	62.06	3	0	1334	0.4	77.1	4.3	8.7	2.1	4.2	2.1	0.9	0.2	77.5	4.3	18.2	0.124	0.515	19.349080	-98.656090
Lim. Edos. Term. Mex. Ppia. Pue.	62.98																			
San Martín Texmelucan	70.00	1	0	12762	9.0	72.3	2.1	14.3	0.7	0.6	0.8	0.1	0.1	81.3	2.1	16.6	0.074	0.503	19.301605	-98.452792
X. C. México - Puebla (Cuota)	74.10	3	1	9258	5.0	81.6	1.5	7.4	1.2	2.0	0.8	0.3	0.2	86.6	1.5	11.9	0.089	0.510	19.260916	-98.429657
X. C. México - Puebla (Cuota)	74.10	3	2	8895	5.3	79.9	1.8	8.2	1.3	2.1	0.9	0.3	0.2	85.2	1.8	13.0	0.085	0.510	19.260889	-98.429778
Huejotzingo	88.00	1	1	6030	4.3	82.9	0.8	8.3	1.4	1.4	0.6	0.1	0.2	87.2	0.8	12.0	0.073	0.502	19.183192	-98.416691
Huejotzingo	88.00	1	2	6068	2.7	83.7	0.9	8.7	1.5	1.6	0.6	0.1	0.2	86.4	0.9	12.7	0.072	0.502	19.183198	-98.416693
Huejotzingo	88.00	3	1	6083	2.5	82.6	1.1	9.5	1.5	1.7	0.7	0.1	0.3	85.1	1.1	13.8	0.073	0.508	19.148951	-98.397932
Huejotzingo	88.00	3	2	6289	3.2	80.3	1.2	10.7	1.6	1.9	0.7	0.1	0.3	83.5	1.2	15.3	0.080	0.508	19.148944	-98.397943
T. Izq. Aeropuerto	92.80	1	1	5746	2.7	80.8	3.1	9.0	1.6	2.0	0.5	0.1	0.2	83.5	3.1	13.4	0.079	0.504	19.136562	-98.377245
T. Izq. Aeropuerto	92.80	1	2	5663	2.5	78.8	3.5	10.3	1.7	2.3	0.6	0.1	0.2	81.3	3.5	15.2	0.088	0.504	19.136555	-98.377231
T. Der. Cholula	101.00	1	1	11381	1.7	88.4	0.4	4.3	1.1	1.5	1.8	0.2	0.6	90.1	0.4	9.5	0.081	0.503	19.076766	-98.322338
T. Der. Cholula	101.00	1	2	11250	1.6	87.4	0.4	4.7	1.3	1.7	2.1	0.2	0.6	89.0	0.4	10.6	0.076	0.503	19.076765	-98.322329
T. Der. Cholula	101.00	3	1	16020	2.0	88.5	0.7	5.4	1.3	1.2	0.6	0.1	0.2	90.5	0.7	8.8	0.074	0.532	19.070238	-98.312792
T. Der. Cholula	101.00	3	2	18243	2.2	87.8	0.7	5.8	1.4	1.2	0.6	0.1	0.2	90.0	0.7	9.3	0.068	0.532	19.070223	-98.312777
Puebla	131.00																			

PUEBLA

5 CARR: Pachuca - Tuxpam

CLAVE: 00608

RUTA: MEX-130

AÑO: 2015

LUGAR	ESTACION				CLASIFICACION VEHICULAR EN PORCIENTO										COORDENADAS					
	KM	TE	SC	TDPA	M	A	B	C2	C3	T3S2	T3S3	T3S2R4	OTROS	A	B	C	K'	D	LATITUD	LONGITUD
Pachuca	0.00																			
X. C. Libramiento de Pachuca	2.60	3	1	19457	0.0	97.1	0.3	1.3	0.5	0.6	0.2	0.0	0.0	97.1	0.3	2.6	0.072	0.509	20.093083	-98.714533
X. C. Libramiento de Pachuca	2.60	3	2	18739	0.0	96.3	0.4	1.7	1.0	0.4	0.2	0.0	0.0	96.3	0.4	3.3	0.078	0.509	20.093083	-98.714533
T. Izq. Pachuquilla (1° Acceso)	7.00	1	1	14892	1.0	91.5	1.1	2.3	0.7	1.4	1.3	0.2	0.5	92.5	1.1	6.4	0.086	0.510	20.077433	-98.709300
T. Izq. Pachuquilla (1° Acceso)	7.00	1	2	15580	0.9	90.9	1.3	2.6	0.7	1.5	1.4	0.2	0.5	91.8	1.3	6.9	0.082	0.510	20.077433	-98.709300
T. Izq. Pachuquilla (2° Acceso)	10.50	1	1	8977	0.1	94.4	1.0	2.0	1.4	0.8	0.3	0.0	0.0	94.5	1.0	4.5	0.088	0.503	20.066600	-98.675300
T. Izq. Pachuquilla (2° Acceso)	10.50	1	2	9089	0.1	92.9	0.9	3.0	1.8	0.9	0.4	0.0	0.0	93.0	0.9	6.1	0.086	0.503	20.066600	-98.675300
T. Der. Cd. Sahagún	16.59	1	1	7719	0.1	91.5	1.9	3.5	1.8	0.7	0.3	0.2	0.0	91.6	1.9	6.5	0.089	0.509	20.053167	-98.623433
T. Der. Cd. Sahagún	16.59	1	2	7460	0.1	91.0	1.6	4.5	1.4	0.7	0.3	0.3	0.1	91.1	1.6	7.3	0.085	0.509	20.053167	-98.623433
T. C. Venta de Carpio - Tulancingo	36.45	1	1	7898	0.1	89.9	1.8	5.1	1.6	0.8	0.3	0.3	0.1	90.0	1.8	8.2	0.078	0.509	20.056258	-98.461276
T. C. Venta de Carpio - Tulancingo	36.45	1	2	7619	0.1	89.8	1.8	4.8	1.9	0.9	0.3	0.3	0.1	89.9	1.8	8.3	0.082	0.509	20.056258	-98.461276
T. C. Venta de Carpio - Tulancingo	36.45	3	1	12952	0.1	89.5	2.2	4.0	2.1	1.0	0.5	0.5	0.1	89.6	2.2	8.2	0.073	0.508	20.063337	-98.438879
T. C. Venta de Carpio - Tulancingo	36.45	3	2	12558	0.1	90.0	1.2	4.8	1.6	0.9	0.4	0.9	0.1	90.1	1.2	8.7	0.069	0.508	20.063337	-98.438879
T. Izq. Libramiento de Tulancingo	53.70	3	1	7467	0.1	89.9	1.6	4.4	1.8	1.0	0.8	0.3	0.1	90.0	1.6	8.4	0.074	0.513	20.151602	-98.285124
T. Izq. Libramiento de Tulancingo	53.70	3	2	7097	0.2	86.6	2.7	6.0	2.5	0.9	0.4	0.6	0.1	86.8	2.7	10.5	0.078	0.513	20.151658	-98.285165
T. Izq. Huayacocotla	66.42	3	0	10779	0.1	89.6	1.9	4.7	1.9	1.0	0.4	0.3	0.1	89.7	1.9	8.4	0.084	0.504	20.157500	-98.278800
Lim. Edos. Term. Hgo. Ppia. Pue.	83.18																			
T. Der. Huauchinango (1° Acceso)	94.00	1	0	5682	1.7	82.2	2.1	11.4	0.8	0.7	0.7	0.1	0.3	83.9	2.1	14.0	0.061	0.512	20.168916	-98.074272
T. Der. Huauchinango (2° Acceso)	100.00	3	0	8321	2.0	75.4	3.1	12.4	0.8	3.5	1.5	0.5	0.8	77.4	3.1	19.5	0.059	0.519	20.193562	-98.035909
Villa Ávila Camacho	141.75	1	0	5983	1.4	65.7	6.2	9.2	3.5	6.5	3.6	2.7	1.2	67.1	6.2	26.7	0.070	0.500	20.383112	-97.884229
Villa Ávila Camacho	141.75	3	0	7272	1.3	66.8	5.6	11.4	2.9	5.9	3.0	2.1	1.0	68.1	5.6	26.3	0.071	0.502	20.395494	-97.871857
Piedras Negras	158.70	1	0	3618	1.5	61.8	5.0	14.6	4.1	7.5	3.0	1.6	0.9	63.3	5.0	31.7	0.063	0.511	20.438443	-97.763484
T. Izq. Venustiano Carranza	174.10	3	0	5528	1.2	64.8	4.4	14.4	3.5	6.2	3.8	1.0	0.7	66.0	4.4	29.6	0.062	0.508	20.483104	-97.636176
Lim. Edos. Term. Pue. Ppia. Ver.	180.00																			
T. Der. Poza Rica	197.00	1	0	16095	2.0	77.6	1.0	12.0	2.1	2.5	2.0	0.4	0.4	79.6	1.0	19.4	0.075	0.506	20.534439	-97.487255
T. Der. Poza Rica	197.00	3	0	22641	1.4	77.9	3.3	11.1	2.4	1.6	1.5	0.5	0.3	79.3	3.3	17.4	0.066	0.510	20.561038	-97.476927
Tihuatlán	217.00	1	0	11775	0.9	71.2	2.4	10.4	2.2	7.0	2.5	2.3	1.1	72.1	2.4	25.5	0.072	0.503	20.698846	-97.527742
Tihuatlán	217.00	3	0	2973	5.4	76.9	0.5	10.8	1.2	3.0	1.4	0.4	0.4	82.3	0.5	17.2	0.073	0.518	20.721125	-97.527642
T. C. Tihuatlán - Tuxpam (Cuota)	232.50	1	0	2191	6.9	73.8	0.4	11.7	1.7	2.9	1.9	0.5	0.2	80.7	0.4	18.9	0.074	0.502	20.814179	-97.477053

6 CARR: Puebla - Belem

CLAVE: 00055

RUTA: MEX-121

AÑO: 2015

LUGAR	ESTACION				CLASIFICACION VEHICULAR EN PORCIENTO										COORDENADAS					
	KM	TE	SC	TDPA	M	A	B	C2	C3	T3S2	T3S3	T3S2R4	OTROS	A	B	C	K'	D	LATITUD	LONGITUD
T. C. Puebla - Tlaxcala	0.00																			

PUEBLA

6 CARR: Puebla - Belem

CLAVE: 00055

RUTA: MEX-121

AÑO: 2015

LUGAR	ESTACION				CLASIFICACION VEHICULAR EN PORCIENTO													COORDENADAS		
	KM	TE	SC	TDPA	M	A	B	C2	C3	T3S2	T3S3	T3S2R4	OTROS	A	B	C	K'	D	LATITUD	LONGITUD
X. C. Puebla - Córdoba (Cuota)	4.00	3	1	31902	0.9	86.5	0.5	6.9	0.8	1.6	2.0	0.4	0.4	87.4	0.5	12.1	0.066	0.519	19.088922	-98.185250
X. C. Puebla - Córdoba (Cuota)	4.00	3	2	29529	1.0	84.9	0.5	7.9	0.8	1.8	2.3	0.4	0.4	85.9	0.5	13.6	0.089	0.519	19.088921	-98.185213
Lim. Edos. Term. Pue. Ppia. Tlax.	6.60																			
Lim. Edos. Term. Tlax. Ppia. Pue.	8.40																			
Lim. Edos. Term. Pue. Ppia. Tlax.	9.50																			
T. Izq. Zacatelco	16.70	1	1	17216	1.3	83.4	0.8	9.9	1.2	2.3	0.6	0.4	0.1	84.7	0.8	14.5	0.062	0.504	19.206743	-98.196290
T. Izq. Zacatelco	16.70	1	2	17491	1.2	82.4	1.0	10.7	1.2	2.4	0.6	0.4	0.1	83.6	1.0	15.4	0.065	0.504	19.206742	-98.196286
X. C. Tlaxcala - Belem	28.80	1	1	21661	2.8	87.0	0.8	4.2	0.7	2.1	1.5	0.4	0.5	89.8	0.8	9.4	0.072	0.512	19.315854	-98.204433
X. C. Tlaxcala - Belem	28.80	1	2	20661	1.4	87.4	0.8	4.7	0.7	2.4	1.6	0.4	0.6	88.8	0.8	10.4	0.073	0.512	19.315861	-98.204418
T. C. San Martín Texmelucan - Ocotoxco (Cuota)	34.90																			

7 CARR: Puebla - Huajuapán de León

CLAVE: 00049

RUTA: MEX-190

AÑO: 2015

LUGAR	ESTACION				CLASIFICACION VEHICULAR EN PORCIENTO													COORDENADAS		
	KM	TE	SC	TDPA	M	A	B	C2	C3	T3S2	T3S3	T3S2R4	OTROS	A	B	C	K'	D	LATITUD	LONGITUD
Puebla	0.00	3	1	20420	1.7	93.0	0.2	3.2	0.7	0.4	0.4	0.1	0.3	94.7	0.2	5.1	0.068	0.526	19.033123	-98.264696
Puebla	0.00	3	2	22667	1.3	92.8	0.2	3.6	0.9	0.4	0.4	0.1	0.3	94.1	0.2	5.7	0.067	0.526	19.033118	-98.264710
Atlixco	29.88	1	0	20038	3.1	85.4	0.4	6.7	1.2	1.1	1.1	0.9	0.1	88.5	0.4	11.1	0.072	0.505	18.930732	-98.406985
Atlixco	29.88	3	1	7306	2.7	85.3	0.9	5.5	1.2	1.7	1.2	1.2	0.3	88.0	0.9	11.1	0.087	0.502	18.866345	-98.440282
Atlixco	29.88	3	2	7370	2.6	84.4	0.9	5.9	1.3	2.1	1.3	1.2	0.3	87.0	0.9	12.1	0.082	0.502	18.866364	-98.440304
Tepeojuma	51.90	1	1	5232	2.1	79.6	2.1	9.3	1.4	2.0	1.5	1.6	0.4	81.7	2.1	16.2	0.078	0.505	18.726860	-98.449660
Tepeojuma	51.90	1	2	5342	2.0	78.2	2.2	9.8	1.6	2.3	1.7	1.8	0.4	80.2	2.2	17.6	0.089	0.505	18.726849	-98.449657
Izúcar de Matamoros	67.00	1	0	10887	2.5	76.6	1.7	8.9	1.6	4.4	1.9	1.7	0.7	79.1	1.7	19.2	0.070	0.509	18.631213	-98.469056
T. Der. Cuautla	70.00	3	0	9074	10.7	69.0	2.7	11.2	1.1	3.6	0.9	0.4	0.4	79.7	2.7	17.6	0.068	0.520	18.582546	-98.451877
Tehuiztingo	113.30	1	0	5596	3.0	78.8	3.1	7.4	1.7	3.9	1.0	0.4	0.7	81.8	3.1	15.1	0.082	0.504	18.338150	-98.282868
Acatlán de Osorio	154.20	1	0	6961	2.5	83.1	1.3	8.4	0.6	2.9	0.5	0.2	0.5	85.6	1.3	13.1	0.068	0.503	18.180775	-98.059301
Chila	192.30	3	0	2409	2.2	80.1	4.0	8.2	1.9	1.7	0.8	0.7	0.4	82.3	4.0	13.7	0.066	0.509	17.967084	-97.864349
Lim. Edos. Term. Pue. Ppia. Oax.	200.30																			
T. Izq. Las Palmas	202.10	1	0	2189	1.8	77.6	5.0	10.9	1.8	1.8	0.5	0.5	0.1	79.4	5.0	15.6	0.069	0.507	17.883262	-97.837825
Huajuapán de León	219.30	1	0	3648	3.2	82.4	2.8	7.3	1.1	2.3	0.4	0.2	0.3	85.6	2.8	11.6	0.072	0.510	17.836351	-97.790607

PUEBLA

8 CARR: Puebla - Tehuacán

CLAVE: 21047

ruta: MEX-150

AÑO: 2015

LUGAR	ESTACION				CLASIFICACION VEHICULAR EN PORCIENTO													COORDENADAS		
	KM	TE	SC	TDPA	M	A	B	C2	C3	T3S2	T3S3	T3S2R4	OTROS	A	B	C	K'	D	LATITUD	LONGITUD
Puebla	0.00																			
T. Izq. a Enlace Con Aut. Puebla - Córdoba	5.83	3	1	21083	1.3	82.3	1.0	11.5	1.3	1.0	1.3	0.1	0.2	83.6	1.0	15.4	0.073	0.515	19.046180	-98.108059
T. Izq. a Enlace Con Aut. Puebla - Córdoba	5.83	3	2	19822	1.5	80.4	1.0	12.8	1.4	1.2	1.4	0.1	0.2	81.9	1.0	17.1	0.074	0.515	19.046175	-98.108032
Chachapa	8.40	3	1	15146	0.8	81.1	0.8	12.5	1.5	1.3	1.6	0.2	0.2	81.9	0.8	17.3	0.071	0.514	19.043676	-98.080815
Chachapa	8.40	3	2	16024	1.4	78.3	0.9	13.9	1.8	1.5	1.8	0.2	0.2	79.7	0.9	19.4	0.071	0.514	19.043680	-98.080811
Amozoc	17.86	1	1	9464	1.0	80.1	1.7	7.9	1.3	2.9	2.9	0.9	1.3	81.1	1.7	17.2	0.071	0.509	19.041997	-98.047363
Amozoc	17.86	1	2	9141	1.9	76.8	2.0	9.1	1.4	3.3	3.2	1.0	1.3	78.7	2.0	19.3	0.068	0.509	19.042003	-98.047371
Amozoc	17.86	3	1	10617	1.3	85.3	0.6	6.2	1.6	2.4	1.6	0.3	0.7	86.6	0.6	12.8	0.074	0.505	19.038588	-98.034347
Amozoc	17.86	3	2	10396	1.4	84.0	0.6	7.0	1.7	2.5	1.7	0.3	0.8	85.4	0.6	14.0	0.092	0.505	19.038584	-98.034356
Tepeaca	35.30	1	1	10150	1.2	84.1	1.1	7.4	1.6	2.1	1.6	0.3	0.6	85.3	1.1	13.6	0.099	0.510	18.987612	-97.914261
Tepeaca	35.30	1	2	9746	1.0	83.0	1.2	8.3	1.6	2.2	1.8	0.3	0.6	84.0	1.2	14.8	0.109	0.510	18.987606	-97.914264
Tepeaca	35.30	3	1	9265	2.3	85.4	0.8	7.8	1.2	1.2	0.9	0.1	0.3	87.7	0.8	11.5	0.080	0.512	18.954862	-97.898400
Tepeaca	35.30	3	2	8841	2.3	83.6	1.0	9.1	1.2	1.4	1.0	0.1	0.3	85.9	1.0	13.1	0.074	0.512	18.954862	-97.898400
T. Izq. Acatzingo	41.80	3	1	8054	1.5	74.6	4.2	13.2	2.5	1.9	1.4	0.2	0.5	76.1	4.2	19.7	0.076	0.507	18.923555	-97.857140
T. Izq. Acatzingo	41.80	3	2	8295	1.5	72.9	4.4	14.1	2.8	2.1	1.5	0.2	0.5	74.4	4.4	21.2	0.068	0.507	18.923559	-97.857145
T. Der. San Juan Ixcaquixtla	45.25	1	1	8698	1.6	74.9	3.5	14.1	2.1	2.1	1.1	0.1	0.5	76.5	3.5	20.0	0.073	0.505	18.919088	-97.833515
T. Der. San Juan Ixcaquixtla	45.25	1	2	8526	1.8	71.9	3.6	16.1	2.5	2.3	1.2	0.1	0.5	73.7	3.6	22.7	0.069	0.505	18.919088	-97.833515
T. Der. San Juan Ixcaquixtla	45.25	3	1	8896	2.8	77.9	2.1	11.2	1.9	2.0	1.3	0.2	0.6	80.7	2.1	17.2	0.076	0.501	18.917706	-97.830188
T. Der. San Juan Ixcaquixtla	45.25	3	2	8937	2.5	76.0	2.3	12.4	2.2	2.4	1.4	0.2	0.6	78.5	2.3	19.2	0.074	0.501	18.917706	-97.830188
Tecamachalco	57.40	1	0	16780	2.6	71.7	1.8	10.4	2.1	7.7	1.3	0.7	1.7	74.3	1.8	23.9	0.062	0.511	18.891461	-97.755494
Tecamachalco	57.40	3	1	6894	2.5	85.2	1.6	5.7	1.5	1.4	1.3	0.4	0.4	87.7	1.6	10.7	0.095	0.502	18.870421	-97.715395
Tecamachalco	57.40	3	2	6836	2.5	83.4	1.8	6.6	1.7	1.7	1.5	0.4	0.4	85.9	1.8	12.3	0.091	0.502	18.870421	-97.715395
Tepanco de López	97.40	1	0	5412	2.1	71.9	3.9	13.0	2.7	4.3	1.2	0.3	0.6	74.0	3.9	22.1	0.108	0.505	18.561418	-97.567945
Tepanco de López	97.40	3	0	6874	2.2	74.6	3.4	11.3	2.7	3.9	1.1	0.2	0.6	76.8	3.4	19.8	0.092	0.507	18.550766	-97.551808
X. C. Cuacnopalan - Oaxaca (Cuota)	110.60	1	0	10671	2.6	75.3	1.6	9.3	1.6	6.5	1.2	0.5	1.4	77.9	1.6	20.5	0.085	0.503	18.490258	-97.461167
T. C. Tehuacán - Córdoba	115.70	1	1	9340	3.2	79.9	2.4	9.1	1.4	2.2	1.0	0.3	0.5	83.1	2.4	14.5	0.078	0.501	18.481060	-97.445773
T. C. Tehuacán - Córdoba	115.70	1	2	9305	3.1	78.1	2.6	10.4	1.4	2.4	1.2	0.3	0.5	81.2	2.6	16.2	0.073	0.501	18.481067	-97.445761

9 CARR: Puebla - Tlaxcala

CLAVE: 00475

ruta: MEX-119

AÑO: 2015

LUGAR	ESTACION				CLASIFICACION VEHICULAR EN PORCIENTO													COORDENADAS		
	KM	TE	SC	TDPA	M	A	B	C2	C3	T3S2	T3S3	T3S2R4	OTROS	A	B	C	K'	D	LATITUD	LONGITUD
Puebla	0.00																			
X. C. Puebla - Córdoba (Cuota) Central	5.41	3	1	11670	1.4	87.3	0.4	3.9	1.1	2.0	2.6	0.5	0.8	88.7	0.4	10.9	0.080	0.510	19.092485	-98.206575
X. C. Puebla - Córdoba (Cuota) Lateral	5.41	3	1	3963	3.7	75.7	0.7	17.0	0.9	1.1	0.6	0.1	0.2	79.4	0.7	19.9	0.085	0.507	19.092485	-98.206575

PUEBLA

9 CARR: Puebla - Tlaxcala

CLAVE: 00475

RUTA: MEX-119

AÑO: 2015

LUGAR	ESTACION				CLASIFICACION VEHICULAR EN PORCIENTO										COORDENADAS					
	KM	TE	SC	TDPA	M	A	B	C2	C3	T3S2	T3S3	T3S2R4	OTROS	A	B	C	K'	D	LATITUD	LONGITUD
X. C. Puebla - Córdoba (Cuota) Lateral	5.41	3	2	4078	1.4	75.1	0.7	19.7	1.0	1.1	0.7	0.1	0.2	76.5	0.7	22.8	0.094	0.507	19.092491	-98.206570
X. C. Puebla - Córdoba (Cuota) Central	5.41	3	2	11195	1.5	86.0	0.4	4.5	1.1	2.3	2.8	0.5	0.9	87.5	0.4	12.1	0.067	0.510	19.092491	-98.206570
Lim. Edos. Term. Pue. Ppia. Tlax.	11.83																			
Panzacola	13.14	3	1	11322	1.7	87.0	0.6	5.9	0.4	1.9	1.5	0.3	0.7	88.7	0.6	10.7	0.063	0.501	19.151955	-98.223604
Panzacola	13.14	3	2	11270	2.0	86.0	0.6	6.4	0.4	2.0	1.6	0.3	0.7	88.0	0.6	11.4	0.075	0.501	19.151932	-98.223604
San Toribio Xicohtzinco	16.10	3	1	8824	3.5	86.6	0.2	6.9	0.3	0.9	1.0	0.2	0.4	90.1	0.2	9.7	0.069	0.508	19.187292	-98.237712
San Toribio Xicohtzinco	16.10	3	2	9122	3.5	85.8	0.2	7.5	0.3	0.9	1.2	0.2	0.4	89.3	0.2	10.5	0.069	0.508	19.187292	-98.237755
Zacatelco	20.78	1	1	10751	3.1	87.1	0.3	6.9	0.2	1.0	1.0	0.0	0.4	90.2	0.3	9.5	0.068	0.512	19.207887	-98.240725
Zacatelco	20.78	1	2	10257	3.3	86.3	0.3	7.2	0.2	1.2	1.1	0.0	0.4	89.6	0.3	10.1	0.065	0.512	19.207889	-98.240723
T. Izq. San Martín Texmelucan	22.99	1	1	11112	1.9	90.9	0.1	5.3	0.1	0.7	0.8	0.0	0.2	92.8	0.1	7.1	0.067	0.501	19.234189	-98.243018
T. Izq. San Martín Texmelucan	22.99	1	2	11152	2.0	90.4	0.1	5.5	0.1	0.8	0.9	0.0	0.2	92.4	0.1	7.5	0.079	0.501	19.234188	-98.243022
T. Der. Tepeyanco (2º Acceso)	24.97	3	1	9707	1.6	92.5	0.1	4.5	0.1	0.5	0.6	0.0	0.1	94.1	0.1	5.8	0.069	0.506	19.250089	-98.235530
T. Der. Tepeyanco (2º Acceso)	24.97	3	2	9493	1.8	91.7	0.1	5.1	0.1	0.5	0.6	0.0	0.1	93.5	0.1	6.4	0.083	0.506	19.250074	-98.235534
T. Der. Ocotlán (Alta)	32.45	1	1	9197	1.3	93.1	0.1	1.9	0.0	0.8	2.2	0.2	0.4	94.4	0.1	5.5	0.062	0.505	19.303202	-98.240943
T. Der. Ocotlán (Baja)	32.45	1	1	5115	2.0	93.6	0.1	3.3	0.0	0.3	0.5	0.1	0.1	95.6	0.1	4.3	0.082	0.505	19.303223	-98.240948
T. Der. Ocotlán (Baja)	32.45	1	2	4990	1.5	93.9	0.1	3.4	0.0	0.3	0.6	0.1	0.1	95.4	0.1	4.5	0.073	0.505	19.303217	-98.240947
T. Der. Ocotlán (Alta)	32.45	1	2	9032	0.8	92.9	0.1	2.1	0.0	0.9	2.6	0.2	0.4	93.7	0.1	6.2	0.076	0.505	19.303177	-98.240915
Tlaxcala	33.22	1	1	10987	2.2	95.0	0.9	0.8	0.1	0.1	0.7	0.1	0.1	97.2	0.9	1.9	0.071	0.517	19.311386	-98.240023
Tlaxcala	33.22	1	2	10261	1.3	95.8	0.9	0.9	0.1	0.1	0.7	0.1	0.1	97.1	0.9	2.0	0.066	0.517	19.311404	-98.240035

10 CARR: Ramal a Nuevo Necaxa

CLAVE: 21592

RUTA: MEX-130

AÑO: 2015

LUGAR	ESTACION				CLASIFICACION VEHICULAR EN PORCIENTO										COORDENADAS					
	KM	TE	SC	TDPA	M	A	B	C2	C3	T3S2	T3S3	T3S2R4	OTROS	A	B	C	K'	D	LATITUD	LONGITUD
T. C. Pachuca - Ent. Cañada Rica	0.00																			
Nuevo Necaxa	1.50	1	0	2951	3.1	83.2	1.1	7.3	0.6	2.6	0.8	0.5	0.8	86.3	1.1	12.6	0.075	0.502	20.219952	-97.999410

11 CARR: San Hipólito - Xalapa

CLAVE: 00486

RUTA: MEX-140

AÑO: 2015

LUGAR	ESTACION				CLASIFICACION VEHICULAR EN PORCIENTO										COORDENADAS					
	KM	TE	SC	TDPA	M	A	B	C2	C3	T3S2	T3S3	T3S2R4	OTROS	A	B	C	K'	D	LATITUD	LONGITUD
T. C. Puebla - Tehuacán	0.00	3	1	4225	1.5	73.8	2.8	14.2	3.5	2.3	1.4	0.1	0.4	75.3	2.8	21.9	0.079	0.500	18.930512	-97.858015
T. C. Puebla - Tehuacán	0.00	3	2	4219	1.4	70.6	3.1	16.3	3.9	2.7	1.5	0.1	0.4	72.0	3.1	24.9	0.082	0.500	18.930516	-97.858025
X. C. Puebla - Córdoba (Cuota)	7.86	3	1	10713	1.4	79.3	2.3	10.6	1.8	2.1	1.5	0.5	0.5	80.7	2.3	17.0	0.077	0.516	18.977583	-97.803955
X. C. Puebla - Córdoba (Cuota)	7.86	3	2	10061	1.5	77.9	2.5	11.1	2.1	2.1	1.8	0.5	0.5	79.4	2.5	18.1	0.073	0.516	18.977600	-97.803950

PUEBLA

11 CARR: San Hipólito - Xalapa

CLAVE: 00486

RUTA: MEX-140

AÑO: 2015

LUGAR	ESTACION				CLASIFICACION VEHICULAR EN PORCIENTO														COORDENADAS	
	KM	TE	SC	TDPA	M	A	B	C2	C3	T3S2	T3S3	T3S2R4	OTROS	A	B	C	K'	D	LATITUD	LONGITUD
San Salvador El Seco	35.35	1	0	8391	1.0	73.8	4.7	8.4	3.7	4.5	2.5	0.8	0.6	74.8	4.7	20.5	0.077	0.506	19.119058	-97.658509
Zacatepec	54.20	1	0	7606	0.6	57.4	4.1	9.8	5.4	13.7	4.7	3.0	1.3	58.0	4.1	37.9	0.066	0.519	19.261142	-97.533724
Zacatepec	54.20	3	1	4292	0.7	61.0	3.9	8.4	6.0	8.0	6.5	4.6	0.9	61.7	3.9	34.4	0.078	0.505	19.273336	-97.527869
Zacatepec	54.20	3	2	4211	0.5	56.6	4.5	9.3	6.9	8.8	7.2	5.3	0.9	57.1	4.5	38.4	0.064	0.505	19.273337	-97.527873
Alchichica	80.00	3	1	3682	1.0	61.9	3.2	9.0	6.4	8.5	4.5	4.8	0.7	62.9	3.2	33.9	0.083	0.507	19.458114	-97.384920
Alchichica	80.00	3	2	3574	1.0	57.5	3.6	10.0	6.9	10.2	5.1	5.1	0.6	58.5	3.6	37.9	0.062	0.507	19.458120	-97.384922
Lim. Edos. Term. Pue. Ppia. Ver.	83.25																			
San Antonio Limón	89.60	1	0	7360	0.7	57.4	3.9	12.2	5.7	9.6	4.9	4.8	0.8	58.1	3.9	38.0	0.066	0.509	19.493097	-97.355567
Perote	101.70	1	0	11130	1.8	78.1	1.2	7.4	2.3	5.3	2.2	0.9	0.8	79.9	1.2	18.9	0.072	0.503	19.554580	-97.257765
Perote	101.70	3	0	10461	3.5	80.4	1.5	8.7	1.5	1.9	1.7	0.7	0.1	83.9	1.5	14.6	0.070	0.509	19.577996	-97.229750
T. Izq. Villa Aldama	109.50	1	0	6742	1.8	75.3	1.0	11.8	3.6	3.9	1.3	0.9	0.4	77.1	1.0	21.9	0.075	0.517	19.614386	-97.190234
T. C. Libramiento de Perote (Cuota)	110.70	3	1	4931	1.9	72.2	1.8	11.2	4.0	4.4	1.6	2.7	0.2	74.1	1.8	24.1	0.081	0.507	19.627278	-97.177457
T. C. Libramiento de Perote (Cuota)	110.70	3	2	5072	0.9	70.0	2.0	12.6	4.3	5.1	1.7	3.1	0.3	70.9	2.0	27.1	0.079	0.507	19.627278	-97.177464
Banderilla	145.00	1	0	15111	1.7	76.4	1.2	10.3	3.5	3.1	1.8	1.6	0.4	78.1	1.2	20.7	0.071	0.504	19.588644	-96.968990
T. Izq. Naolinco	146.00	3	1	15944	2.3	81.1	1.5	9.6	1.7	1.7	0.9	1.1	0.1	83.4	1.5	15.1	0.076	0.502	19.594957	-96.950276
T. Izq. Naolinco	146.00	3	2	15813	1.9	79.4	1.6	11.1	1.8	1.8	1.1	1.2	0.1	81.3	1.6	17.1	0.068	0.502	19.594965	-96.950267
Xalapa	151.20	1	1	27186	2.1	86.8	0.7	5.7	0.8	1.6	1.3	0.5	0.5	88.9	0.7	10.4	0.087	0.508	19.571317	-96.928718
Xalapa	151.20	1	2	26314	2.1	86.0	0.8	5.9	1.0	1.8	1.4	0.5	0.5	88.1	0.8	11.1	0.080	0.508	19.571328	-96.928693

12 CARR: San Martín Texmelucan - Tlaxcala

CLAVE: 00158

RUTA: MEX-117

AÑO: 2015

LUGAR	ESTACION				CLASIFICACION VEHICULAR EN PORCIENTO														COORDENADAS	
	KM	TE	SC	TDPA	M	A	B	C2	C3	T3S2	T3S3	T3S2R4	OTROS	A	B	C	K'	D	LATITUD	LONGITUD
San Martín Texmelucan	0.00	3	1	10816	5.1	85.4	0.3	4.4	0.3	1.6	2.0	0.2	0.7	90.5	0.3	9.2	0.071	0.570	19.287962	-98.422690
San Martín Texmelucan	0.00	3	2	8172	5.9	84.2	0.3	4.6	0.3	1.7	2.0	0.2	0.8	90.1	0.3	9.6	0.067	0.570	19.287968	-98.422673
X. C. San Martín Texmelucan - Ocotoxco (Cuota)	1.65	1	0	20799	5.9	84.3	1.0	6.5	0.4	0.6	1.1	0.1	0.1	90.2	1.0	8.8	0.065	0.502	19.291553	-98.412225
Lim. Edos. Term. Pue. Ppia. Tlax.	2.84																			
T. Der. Tepetitla	3.45	3	1	7069	5.2	86.9	0.3	5.0	0.4	0.9	1.0	0.1	0.2	92.1	0.3	7.6	0.075	0.501	19.293934	-98.404630
T. Der. Tepetitla	3.45	3	2	7042	5.5	86.0	0.3	5.2	0.4	1.1	1.2	0.1	0.2	91.5	0.3	8.2	0.077	0.501	19.293940	-98.404612
San Diego Xocoyucan	7.21	3	0	6610	6.3	84.5	0.2	2.7	0.3	4.5	0.6	0.2	0.7	90.8	0.2	9.0	0.071	0.508	19.307938	-98.369570
T. Der. Panotla	19.72	1	0	7869	2.2	86.7	0.4	3.6	0.4	4.6	0.9	0.3	0.9	88.9	0.4	10.7	0.074	0.547	19.319610	-98.277051
T. Der. Panotla	19.72	3	0	8978	3.6	86.1	0.1	3.2	0.3	5.4	0.5	0.1	0.7	89.7	0.1	10.2	0.064	0.534	19.319614	-98.269830
Totolac	21.38	1	0	9229	3.2	85.3	0.1	2.8	0.2	5.9	0.8	0.3	1.4	88.5	0.1	11.4	0.066	0.542	19.322667	-98.260377
Totolac	21.38	3	0	10531	2.1	83.5	0.1	2.5	0.2	7.6	1.2	0.5	2.3	85.6	0.1	14.3	0.072	0.549	19.329971	-98.250314
Tlaxcala	24.81	1	0	15048	2.4	93.2	0.1	3.1	0.1	0.3	0.7	0.0	0.1	95.6	0.1	4.3	0.073	0.525	19.327087	-98.245339

PUEBLA

13 CARR: San Salvador El Seco - Azumbilla

CLAVE: 21004

RUTA: MEX-144

AÑO: 2015

LUGAR	ESTACION				CLASIFICACION VEHICULAR EN PORCIENTO													COORDENADAS		
	KM	TE	SC	TDPA	M	A	B	C2	C3	T3S2	T3S3	T3S2R4	OTROS	A	B	C	K'	D	LATITUD	LONGITUD
San Salvador El Seco	0.00	3	0	5918	2.0	66.2	3.5	7.2	3.5	11.9	2.5	2.3	0.9	68.2	3.5	28.3	0.051	0.512	19.127318	-97.632491
Cd. Serdán	29.00	3	0	5983	1.8	63.0	2.7	9.0	5.3	12.2	2.6	2.5	0.9	64.8	2.7	32.5	0.062	0.500	18.980730	-97.440770
X. C. Puebla - Córdoba (Cuota)	45.94	3	0	5970	2.3	70.3	1.4	11.0	4.1	7.0	2.1	1.2	0.6	72.6	1.4	26.0	0.068	0.516	18.868236	-97.389167
T. C. Tehuacán - Córdoba	73.67	1	0	4716	1.4	71.2	2.5	11.7	4.7	5.0	2.2	0.7	0.6	72.6	2.5	24.9	0.072	0.538	18.647420	-97.391053

14 CARR: Santa Bárbara - Izúcar de Matamoros

CLAVE: 00451

RUTA: MEX-115-160

AÑO: 2015

LUGAR	ESTACION				CLASIFICACION VEHICULAR EN PORCIENTO													COORDENADAS		
	KM	TE	SC	TDPA	M	A	B	C2	C3	T3S2	T3S3	T3S2R4	OTROS	A	B	C	K'	D	LATITUD	LONGITUD
T. C. México - Puebla (Libre)	0.00	3	1	20794	0.0	90.3	1.2	4.2	1.3	1.1	0.5	1.2	0.2	90.3	1.2	8.5	0.059	0.507	19.310870	-98.895820
T. C. México - Puebla (Libre)	0.00	3	2	21365	0.0	88.9	1.4	4.5	2.1	1.4	0.6	0.9	0.2	88.9	1.4	9.7	0.060	0.507	19.310870	-98.895820
X. C. México - Puebla (Cuota)	3.61	1	1	21538	0.0	90.0	1.1	3.7	2.2	1.1	0.7	0.9	0.3	90.0	1.1	8.9	0.060	0.507	19.302160	-98.885510
X. C. México - Puebla (Cuota)	3.61	1	2	22155	0.0	88.2	1.2	5.0	2.7	1.4	0.6	0.8	0.1	88.2	1.2	10.6	0.060	0.507	19.302160	-98.885510
X. C. México - Puebla (Cuota)	3.61	3	1	34185	0.0	84.0	2.2	6.3	1.6	2.8	1.8	1.0	0.3	84.0	2.2	13.8	0.056	0.506	19.285050	-98.880480
X. C. México - Puebla (Cuota)	3.61	3	2	35031	0.0	86.0	1.5	6.6	1.9	1.8	1.0	1.0	0.2	86.0	1.5	12.5	0.060	0.506	19.285050	-98.880480
Chalco	8.00	3	1	29658	0.0	87.0	1.5	5.4	1.3	2.1	1.1	1.4	0.2	87.0	1.5	11.5	0.063	0.507	19.250300	-98.875730
Chalco	8.00	3	2	30551	0.0	85.3	1.8	6.5	1.7	2.2	1.2	1.0	0.3	85.3	1.8	12.9	0.063	0.507	19.250300	-98.875730
T. Der. Juchitepec	12.46	3	1	16961	0.0	85.0	2.3	6.1	1.7	2.3	1.3	1.0	0.3	85.0	2.3	12.7	0.076	0.503	19.232310	-98.845210
T. Der. Juchitepec	12.46	3	2	17150	0.1	86.7	1.8	6.0	1.8	1.6	1.0	0.4	0.6	86.8	1.8	11.4	0.101	0.503	19.232310	-98.845210
Tlalmanalco	20.51	3	0	8124	0.1	89.6	0.5	6.6	2.3	0.7	0.2	0.0	0.0	89.7	0.5	9.8	0.076	0.505	19.198800	-98.799510
Amecameca de Juárez	28.00	1	1	7167	0.1	87.9	1.2	7.7	1.9	0.6	0.3	0.2	0.1	88.0	1.2	10.8	0.079	0.505	19.137840	-98.772150
Amecameca de Juárez	28.00	1	2	7315	0.1	87.2	1.0	8.5	1.9	0.5	0.3	0.3	0.2	87.3	1.0	11.7	0.082	0.505	19.137840	-98.772150
Amecameca de Juárez	28.00	3	1	9341	0.1	84.1	2.0	8.0	2.8	1.4	0.8	0.5	0.3	84.2	2.0	13.8	0.065	0.505	19.111560	-98.776370
Amecameca de Juárez	28.00	3	2	9139	0.1	88.7	2.1	5.4	1.7	1.0	0.4	0.4	0.2	88.8	2.1	9.1	0.066	0.505	19.111560	-98.776370
T. Izq. Ozumba (1º Acceso)	38.81	1	0	18635	0.1	86.3	1.8	7.0	1.7	1.7	0.7	0.5	0.2	86.4	1.8	11.8	0.069	0.501	19.058170	-98.786960
T. Izq. Ozumba (1º Acceso)	38.81	3	0	14218	0.1	83.7	1.6	8.4	1.9	2.5	1.1	0.5	0.2	83.8	1.6	14.6	0.075	0.503	19.049390	-98.792220
Tepetlixpa	42.29	3	0	12766	0.2	85.3	1.9	7.3	2.2	1.5	0.8	0.5	0.3	85.5	1.9	12.6	0.063	0.505	19.018420	-98.824470
Lim. Edos. Term. Mex. Ppia. Mor.	51.70																			
T. Der. Atlatlahucan	58.95	1	1	6381	0.2	87.8	2.2	4.3	1.9	2.0	0.9	0.5	0.2	88.0	2.2	9.8	0.082	0.561	18.929610	-98.887080
T. Der. Atlatlahucan	58.95	1	2	6542	0.1	84.2	2.7	4.7	2.7	3.0	1.5	0.9	0.2	84.3	2.7	13.0	0.118	0.561	18.929610	-98.887080
T. Izq. Tetela del Volcán	62.99	1	1	8542	0.1	88.8	1.9	4.0	1.9	1.7	1.0	0.4	0.2	88.9	1.9	9.2	0.072	0.526	18.899560	-98.907330
T. Izq. Tetela del Volcán	62.99	1	2	8561	0.1	88.8	2.4	3.5	1.8	1.7	1.0	0.5	0.2	88.9	2.4	8.7	0.098	0.526	18.899560	-98.907330
T. Izq. Tetela del Volcán	62.99	3	1	11503	0.1	89.8	2.1	3.2	1.6	1.7	0.9	0.4	0.2	89.9	2.1	8.0	0.079	0.503	18.890660	-98.913300
T. Izq. Tetela del Volcán	62.99	3	2	11662	0.1	89.2	2.4	3.9	1.4	1.5	0.8	0.5	0.2	89.3	2.4	8.3	0.079	0.503	18.890660	-98.913300
T. Izq. Libramiento de Cuautla (1º Acceso)	67.00	1	1	14448	4.2	82.7	2.0	6.2	1.4	1.5	0.8	0.7	0.5	86.9	2.0	11.1	0.073	0.500	18.855730	-98.935810

PUEBLA

14 CARR: Santa Bárbara - Izúcar de Matamoros

CLAVE: 00451

RUTA: MEX-115-160

AÑO: 2015

LUGAR	ESTACION				CLASIFICACION VEHICULAR EN PORCIENTO										COORDENADAS					
	KM	TE	SC	TDPA	M	A	B	C2	C3	T3S2	T3S3	T3S2R4	OTROS	A	B	C	K'	D	LATITUD	LONGITUD
T. Izq. Libramiento de Cuautla (1º Acceso)	67.00	1	2	14954	3.4	82.3	2.1	6.7	1.6	1.5	1.0	0.9	0.5	85.7	2.1	12.2	0.072	0.500	18.855730	-98.935810
T. Der. La Pera	68.90	1	1	23867	0.0	91.3	1.1	3.9	1.4	0.9	0.5	0.8	0.1	91.3	1.1	7.6	0.058	0.506	18.855680	-98.935840
T. Der. La Pera	68.90	1	2	23270	0.0	91.9	1.3	3.1	1.4	0.9	0.5	0.8	0.1	91.9	1.3	6.8	0.055	0.506	18.855680	-98.935840
T. Izq. Libramiento de Cuautla (2º Acceso)	77.05	3	1	17231	0.1	88.7	2.0	3.8	2.4	1.5	0.7	0.6	0.2	88.8	2.0	9.2	0.063	0.501	18.791950	-98.910390
T. Izq. Libramiento de Cuautla (2º Acceso)	77.05	3	2	17172	0.0	89.5	2.3	3.9	1.7	1.4	0.6	0.4	0.2	89.5	2.3	8.2	0.065	0.501	18.791950	-98.910390
T. Der. Tlayecac	85.06	1	1	14273	1.5	81.8	4.7	4.8	2.5	1.9	1.4	0.8	0.6	83.3	4.7	12.0	0.079	0.515	18.770840	-98.893740
T. Der. Tlayecac	85.06	1	2	12856	1.7	80.3	5.2	5.0	2.5	2.2	1.6	0.9	0.6	82.0	5.2	12.8	0.078	0.515	18.770840	-98.893740
T. Der. Tlayecac	85.06	3	1	11718	0.1	88.6	2.4	4.4	1.4	1.6	0.8	0.5	0.2	88.7	2.4	8.9	0.067	0.501	18.761620	-98.883740
T. Der. Tlayecac	85.06	3	2	11669	0.1	88.8	1.9	4.1	1.7	1.9	0.8	0.5	0.2	88.9	1.9	9.2	0.068	0.501	18.761620	-98.883740
T. Izq. Amayuca	91.36	1	1	11238	0.1	84.2	3.5	6.7	1.9	1.9	0.9	0.6	0.2	84.3	3.5	12.2	0.068	0.502	18.733690	-98.817440
T. Izq. Amayuca	91.36	1	2	11146	0.1	84.7	3.4	6.3	2.4	1.9	0.7	0.4	0.1	84.8	3.4	11.8	0.069	0.502	18.733690	-98.817440
T. Izq. Amayuca	91.36	3	1	6836	0.2	85.4	3.5	3.9	2.2	2.8	1.4	0.4	0.2	85.6	3.5	10.9	0.069	0.502	18.714990	-98.788440
T. Izq. Amayuca	91.36	3	2	6882	0.2	84.7	3.5	4.3	2.1	3.0	1.4	0.6	0.2	84.9	3.5	11.6	0.064	0.502	18.714990	-98.788440
T. C. Atlixco - Jantetelco (Cuota)	94.70	3	1	2791	0.4	85.2	3.1	4.7	2.3	1.8	1.5	0.7	0.3	85.6	3.1	11.3	0.071	0.503	18.697160	-98.760670
T. C. Atlixco - Jantetelco (Cuota)	94.70	3	2	2755	0.3	85.6	2.6	4.4	2.1	2.8	1.5	0.5	0.2	85.9	2.6	11.5	0.081	0.503	18.697160	-98.760670
T. Der. Tenango	102.96	1	1	2714	0.5	85.7	2.7	4.1	2.6	2.3	1.0	0.5	0.6	86.2	2.7	11.1	0.072	0.506	18.669750	-98.733920
T. Der. Tenango	102.96	1	2	2647	0.5	88.9	2.0	3.0	1.2	2.0	1.3	0.9	0.2	89.4	2.0	8.6	0.076	0.506	18.669750	-98.733920
T. Der. Tenango	102.96	3	1	2260	0.5	82.3	4.3	4.5	2.5	2.9	1.9	0.7	0.4	82.8	4.3	12.9	0.068	0.524	18.665640	-98.730670
T. Der. Tenango	102.96	3	2	2056	0.4	84.4	3.9	4.8	2.5	1.9	1.3	0.5	0.3	84.8	3.9	11.3	0.084	0.524	18.665640	-98.730670
Lim. Edos. Term. Mor. Ppia. Pue.	103.23																			
X. C. Amayuca - Izúcar de Matamoros	134.99	1	1	4413	12.1	70.7	2.4	7.7	1.2	2.9	1.4	1.2	0.4	82.8	2.4	14.8	0.084	0.507	18.605892	-98.485916
X. C. Amayuca - Izúcar de Matamoros	134.99	1	2	4531	11.2	69.5	2.8	8.6	1.4	3.1	1.6	1.4	0.4	80.7	2.8	16.5	0.082	0.507	18.605885	-98.485903
X. C. Amayuca - Izúcar de Matamoros	134.99	3	1	6420	14.7	75.1	1.0	4.5	1.7	1.5	0.9	0.3	0.3	89.8	1.0	9.2	0.076	0.534	18.597483	-98.479521
X. C. Amayuca - Izúcar de Matamoros	134.99	3	2	7342	12.1	76.4	1.1	5.3	1.9	1.6	1.0	0.3	0.3	88.5	1.1	10.4	0.083	0.534	18.597483	-98.479515
T. C. Puebla - Huajuapán de León	138.14																			

15 CARR: Tehuacán - Córdoba

CLAVE: 00534

RUTA: MEX-150

AÑO: 2015

LUGAR	ESTACION				CLASIFICACION VEHICULAR EN PORCIENTO										COORDENADAS					
	KM	TE	SC	TDPA	M	A	B	C2	C3	T3S2	T3S3	T3S2R4	OTROS	A	B	C	K'	D	LATITUD	LONGITUD
Tehuacán	0.00	3	0	13755	3.4	80.4	0.8	8.5	2.4	2.2	1.4	0.4	0.5	83.8	0.8	15.4	0.067	0.504	18.500400	-97.405423
Chapulco	18.27	3	0	7345	2.6	72.2	1.3	12.3	3.3	5.2	1.6	0.6	0.9	74.8	1.3	23.9	0.068	0.506	18.628780	-97.402747
T. Izq. Azumbilla	20.51	3	0	2623	1.4	80.9	2.0	9.0	2.7	3.2	0.6	0.1	0.1	82.3	2.0	15.7	0.074	0.546	18.648055	-97.387482
Lim. Edos. Term. Pue. Ppia. Ver.	26.58																			
Cd. Mendoza	53.31	1	0	10266	3.1	73.5	3.2	13.1	0.8	4.9	0.5	0.1	0.8	76.6	3.2	20.2	0.074	0.531	18.790716	-97.195540

PUEBLA

15 CARR: Tehuacán - Córdoba

CLAVE: 00534

RUTA: MEX-150

AÑO: 2015

LUGAR	ESTACION				CLASIFICACION VEHICULAR EN PORCIENTO														COORDENADAS	
	KM	TE	SC	TDPA	M	A	B	C2	C3	T3S2	T3S3	T3S2R4	OTROS	A	B	C	K'	D	LATITUD	LONGITUD
Cd. Mendoza	53.31	3	1	8092	7.7	74.0	0.5	15.8	0.1	0.7	0.9	0.1	0.2	81.7	0.5	17.8	0.064	0.504	18.810325	-97.172563
Cd. Mendoza	53.31	3	2	7977	7.3	73.5	0.5	16.5	0.1	0.8	1.0	0.1	0.2	80.8	0.5	18.7	0.062	0.504	18.810329	-97.172561
Orizaba	63.52	1	1	17902	3.2	88.4	1.6	3.2	0.2	0.5	2.0	0.5	0.4	91.6	1.6	6.8	0.058	0.503	18.841090	-97.113075
Orizaba	63.52	1	2	17711	3.4	86.9	1.9	3.8	0.2	0.5	2.4	0.5	0.4	90.3	1.9	7.8	0.051	0.503	18.841131	-97.113085
Orizaba	63.52	3	1	18520	2.8	83.5	1.6	9.1	1.0	0.7	0.5	0.4	0.4	86.3	1.6	12.1	0.060	0.503	18.859727	-97.066002
Orizaba	63.52	3	2	18730	3.6	81.0	1.7	10.6	1.0	0.8	0.5	0.4	0.4	84.6	1.7	13.7	0.068	0.503	18.859719	-97.066003
Fortín	80.24	1	0	5817	5.1	82.2	0.7	9.6	1.0	0.8	0.6	0.0	0.0	87.3	0.7	12.0	0.071	0.519	18.892293	-97.011927
Fortín	80.24	3	1	14678	4.4	84.7	0.8	6.0	0.8	1.2	1.3	0.3	0.5	89.1	0.8	10.1	0.066	0.501	18.901012	-96.991321
Fortín	80.24	3	2	14720	3.6	84.3	1.0	6.6	0.8	1.4	1.5	0.3	0.5	87.9	1.0	11.1	0.067	0.501	18.901023	-96.991321
Córdoba	86.76	1	1	13731	2.8	86.7	0.5	8.2	0.6	0.4	0.4	0.3	0.1	89.5	0.5	10.0	0.070	0.516	18.902666	-96.980058
Córdoba	86.76	1	2	12863	3.9	84.8	0.5	9.0	0.6	0.4	0.4	0.3	0.1	88.7	0.5	10.8	0.079	0.516	18.902669	-96.980057

16 CARR: Tehuacán - Huajuapán de León

CLAVE: 00211

RUTA: MEX-125

AÑO: 2015

LUGAR	ESTACION				CLASIFICACION VEHICULAR EN PORCIENTO														COORDENADAS	
	KM	TE	SC	TDPA	M	A	B	C2	C3	T3S2	T3S3	T3S2R4	OTROS	A	B	C	K'	D	LATITUD	LONGITUD
Tehuacán	0.00	3	1	6325	8.6	83.7	0.5	2.8	1.4	1.4	1.0	0.1	0.5	92.3	0.5	7.2	0.087	0.501	18.436725	-97.401745
Tehuacán	0.00	3	2	6366	7.2	84.5	0.5	3.0	1.5	1.6	1.1	0.1	0.5	91.7	0.5	7.8	0.084	0.501	18.436727	-97.401740
Zapotitlán Salinas	28.00	1	0	2347	3.7	75.3	1.4	13.1	2.0	2.9	1.0	0.4	0.2	79.0	1.4	19.6	0.076	0.507	18.334015	-97.461145
Lim. Edos. Term. Pue. Ppia. Oax.	55.80																			
Santiago Chazumba	63.02	1	0	1616	2.6	78.1	1.5	9.5	2.2	3.5	1.6	0.7	0.3	80.7	1.5	17.8	0.077	0.501	18.198483	-97.679592
Santiago Chazumba	63.02	3	0	1550	2.9	78.0	1.3	10.4	1.9	3.3	1.5	0.6	0.1	80.9	1.3	17.8	0.087	0.501	18.184596	-97.679898
T. Izq. Santa María Camotlán	103.13	1	0	1614	1.6	80.2	1.3	8.9	2.1	3.4	1.7	0.7	0.1	81.8	1.3	16.9	0.073	0.506	17.907761	-97.687706
T. C. Huajuapán de León - Oaxaca	119.40	1	0	9850	5.5	82.4	0.4	4.9	0.5	4.3	0.8	0.3	0.9	87.9	0.4	11.7	0.068	0.501	17.821599	-97.758847

17 CARR: Teziutlán - Nautla

CLAVE: 00144

RUTA: MEX-129

AÑO: 2015

LUGAR	ESTACION				CLASIFICACION VEHICULAR EN PORCIENTO														COORDENADAS	
	KM	TE	SC	TDPA	M	A	B	C2	C3	T3S2	T3S3	T3S2R4	OTROS	A	B	C	K'	D	LATITUD	LONGITUD
Teziutlán	0.00	3	0	7929	3.0	81.8	1.3	6.9	0.7	4.3	0.8	0.2	1.0	84.8	1.3	13.9	0.076	0.507	19.834952	-97.344206
Lim. Edos. Term. Pue. Ppia. Ver.	17.50																			
Tlapacoyan	33.20	1	0	5743	5.3	80.8	2.3	7.5	1.0	2.3	0.4	0.1	0.3	86.1	2.3	11.6	0.066	0.510	19.954205	-97.219992
Tlapacoyan	33.20	3	0	10309	4.2	77.4	1.6	8.0	2.2	4.3	1.2	0.3	0.8	81.6	1.6	16.8	0.059	0.501	19.978366	-97.202654
Martínez de La Torre	58.00	3	0	15707	3.9	81.4	1.3	9.0	1.7	1.3	0.9	0.4	0.1	85.3	1.3	13.4	0.070	0.510	20.087421	-97.022556
San Rafael	84.40	3	0	7027	3.0	75.1	1.9	9.7	2.3	4.3	1.9	1.0	0.8	78.1	1.9	20.0	0.077	0.504	20.197265	-96.868325

PUEBLA

17 CARR : Teziutlán - Nautla

CLAVE: 00144

RUTA: MEX-129

AÑO : 2015

LUGAR	ESTACION				CLASIFICACION VEHICULAR EN PORCIENTO														COORDENADAS	
	KM	TE	SC	TDPA	M	A	B	C2	C3	T3S2	T3S3	T3S2R4	OTROS	A	B	C	K'	D	LATITUD	LONGITUD
T. C. Poza Rica - Veracruz	93.20	1	0	4683	1.4	74.9	1.6	9.7	4.6	3.9	2.1	1.4	0.4	76.3	1.6	22.1	0.072	0.501	20.232962	-96.794617

18 CARR : Teziutlán - Perote

CLAVE: 00209

RUTA: MEX-131

AÑO : 2015

LUGAR	ESTACION				CLASIFICACION VEHICULAR EN PORCIENTO														COORDENADAS	
	KM	TE	SC	TDPA	M	A	B	C2	C3	T3S2	T3S3	T3S2R4	OTROS	A	B	C	K'	D	LATITUD	LONGITUD
Teziutlán	0.00	3	0	10088	2.1	83.3	0.3	8.0	0.5	3.9	0.8	0.2	0.9	85.4	0.3	14.3	0.075	0.501	19.794322	-97.356393
Lim. Edos. Term. Pue. Ppia. Ver.	11.30																			
Jalacingo	12.50	3	0	6727	4.9	78.3	0.5	9.7	1.4	3.1	1.0	0.3	0.8	83.2	0.5	16.3	0.067	0.506	19.792870	-97.297706
T. Izq. Atzalan	23.00	3	0	9650	3.2	77.7	1.6	7.3	2.5	5.2	1.4	0.3	0.8	80.9	1.6	17.5	0.069	0.503	19.775957	-97.250963
T. Izq. Altotonga II	26.90	3	0	6305	3.4	76.6	1.9	7.4	3.9	3.7	2.0	0.3	0.8	80.0	1.9	18.1	0.068	0.529	19.765859	-97.251362
T. Izq. Villa Aldama	37.60	3	0	5500	1.9	72.3	2.8	11.6	4.9	3.8	2.1	0.2	0.4	74.2	2.8	23.0	0.075	0.501	19.661512	-97.247180
Perote	49.10	1	0	6162	2.9	75.3	3.7	9.6	2.6	3.2	1.7	0.6	0.4	78.2	3.7	18.1	0.083	0.513	19.586632	-97.248354

19 CARR : Zacatepec - Oriental

CLAVE: 21189

RUTA: MEX-136

AÑO : 2015

LUGAR	ESTACION				CLASIFICACION VEHICULAR EN PORCIENTO														COORDENADAS	
	KM	TE	SC	TDPA	M	A	B	C2	C3	T3S2	T3S3	T3S2R4	OTROS	A	B	C	K'	D	LATITUD	LONGITUD
Zacatepec	0.00	3	0	2177	0.6	77.6	1.5	8.7	2.8	3.0	4.8	0.6	0.4	78.2	1.5	20.3	0.102	0.502	19.271872	-97.533422
Oriental	16.00																			

20 CARR : Acatzingo - Cd. Mendoza (Cuota)

CLAVE: 00485

RUTA: MEX-150D

AÑO : 2015

LUGAR	ESTACION				CLASIFICACION VEHICULAR EN PORCIENTO														COORDENADAS	
	KM	TE	SC	TDPA	M	A	B	C2	C3	T3S2	T3S3	T3S2R4	OTROS	A	B	C	K'	D	LATITUD	LONGITUD
T. Izq. Acatzingo	47.10	3	1	12403	0.8	66.1	6.3	9.3	3.3	6.4	2.2	4.9	0.7	66.9	6.3	26.8	0.079	0.511	18.967273	-97.782550
T. Izq. Acatzingo	47.10	3	2	11882	1.1	63.8	6.5	9.6	3.7	6.9	2.5	5.1	0.8	64.9	6.5	28.6	0.079	0.511	18.967269	-97.782540
T. Der. Tecamachalco	62.10	1	1	13297	0.9	64.2	5.8	9.1	3.8	7.2	2.0	6.3	0.7	65.1	5.8	29.1	0.077	0.520	18.934857	-97.691179
T. Der. Tecamachalco	62.10	1	2	12995	1.2	60.2	6.6	9.7	4.2	8.5	2.2	6.6	0.8	61.4	6.6	32.0	0.064	0.520	18.934856	-97.691168
T. Der. Tecamachalco	62.10	3	1	11731	0.6	68.3	4.8	6.2	4.0	8.0	2.5	4.5	1.1	68.9	4.8	26.3	0.063	0.506	18.928976	-97.677113
T. Der. Tecamachalco	62.10	3	2	11460	0.7	65.2	5.3	6.8	4.4	8.3	3.0	5.1	1.2	65.9	5.3	28.8	0.072	0.506	18.928976	-97.677118
T. Der. Oaxaca (Cuota)	83.85	1	1	10861	0.8	63.5	7.7	8.1	3.1	8.2	2.6	4.7	1.3	64.3	7.7	28.0	0.072	0.507	18.828016	-97.496572
T. Der. Oaxaca (Cuota)	83.85	1	2	10580	0.7	60.8	8.4	8.4	3.4	8.9	2.6	5.4	1.4	61.5	8.4	30.1	0.079	0.507	18.828018	-97.496581
Caseta de Cobro Esperanza	99.50	2	1	6062	0.2	48.6	8.0	4.6	7.8	14.9	2.6	12.2	1.1	48.8	8.0	43.2	0.075	0.500	18.870773	-97.385953
Caseta de Cobro Esperanza	99.50	2	2	6062	0.2	48.6	8.0	4.6	7.8	14.9	2.6	12.2	1.1	48.8	8.0	43.2	0.075	0.500	18.870773	-97.385953

PUEBLA

20 CARR: Acatzingo - Cd. Mendoza (Cuota)

CLAVE: 00485

RUTA: MEX-150D

AÑO: 2015

LUGAR	ESTACION				CLASIFICACION VEHICULAR EN PORCIENTO														COORDENADAS		
	KM	TE	SC	TDPA	M	A	B	C2	C3	T3S2	T3S3	T3S2R4	OTROS	A	B	C	K'	D	LATITUD	LONGITUD	
Lim. Edos. Term. Pue. Ppia. Ver.	111.40																				
T. Der. Cd. Mendoza	142.40	1	1	7169	1.5	65.7	5.1	6.0	4.4	7.2	3.2	6.1	0.8	67.2	5.1	27.7	0.074	0.504	18.814187	-97.194742	
T. Der. Cd. Mendoza	142.40	1	2	7281	1.2	62.0	5.9	6.5	5.0	7.9	3.5	7.1	0.9	63.2	5.9	30.9	0.087	0.504	18.814165	-97.194742	

21 CARR: Amozoc - Perote (Cuota)

CLAVE: 00030

RUTA: MEX-140D

AÑO: 2015

LUGAR	ESTACION				CLASIFICACION VEHICULAR EN PORCIENTO														COORDENADAS	
	KM	TE	SC	TDPA	M	A	B	C2	C3	T3S2	T3S3	T3S2R4	OTROS	A	B	C	K'	D	LATITUD	LONGITUD
T. C. Puebla - Córdoba (Cuota)	0.00	3	0	9081	0.6	81.7	3.0	6.0	1.3	4.0	1.1	1.3	1.0	82.3	3.0	14.7	0.087	0.507	19.070823	-98.063646
Caseta de Cobro Amozoc	0.68	2	0	9872	0.3	84.0	4.9	3.3	2.3	2.4	0.8	1.2	0.8	84.3	4.9	10.8	0.085	0.500	19.063599	-98.069029
Lim. Edos. Term. Pue. Ppia. Tlax.	20.08																			
X. C. Huamantla - La Venta	25.80	3	0	7060	0.9	79.6	4.3	5.9	1.7	3.7	1.0	1.5	1.4	80.5	4.3	15.2	0.095	0.518	19.228057	-97.897168
Lim. Edos. Term. Tlax. Ppia. Pue.	30.50																			
Lim. Edos. Term. Pue. Ppia. Tlax.	31.26																			
Lim. Edos. Term. Tlax. Ppia. Pue.	31.67																			
Lim. Edos. Term. Pue. Ppia. Tlax.	38.93																			
Caseta de Cobro Cuapiaxtla	40.34	2	0	5877	0.4	84.7	4.9	3.0	1.9	2.3	0.5	1.1	1.2	85.1	4.9	10.0	0.085	0.500	19.304158	-97.805312
Lim. Edos. Term. Tlax. Ppia. Pue.	54.50																			
T. Der. Oriental	61.45	1	0	9539	0.8	76.9	6.2	6.7	1.8	4.0	1.2	1.3	1.1	77.7	6.2	16.1	0.104	0.516	19.414103	-97.646395
T. Der. Oriental	61.45	3	1	3628	2.0	76.1	7.0	6.0	2.2	2.6	1.5	1.8	0.8	78.1	7.0	14.9	0.067	0.536	19.421045	-97.637265
T. Der. Oriental	61.45	3	2	3816	1.3	75.0	7.9	6.1	2.4	2.7	1.6	2.1	0.9	76.3	7.9	15.8	0.077	0.536	19.421058	-97.637234
T. Izq. Teziutlán	62.70	3	0	5277	1.2	73.2	7.6	6.2	2.2	4.4	1.8	2.4	1.0	74.4	7.6	18.0	0.076	0.516	19.427779	-97.628170
Lim. Edos. Term. Pue. Ppia. Ver.	90.36																			
T. C. Lib. de Perote	105.00																			

22 CARR: Cuacnopalan - Oaxaca (Cuota)

CLAVE: 00109

RUTA: MEX-135D

AÑO: 2015

LUGAR	ESTACION				CLASIFICACION VEHICULAR EN PORCIENTO														COORDENADAS	
	KM	TE	SC	TDPA	M	A	B	C2	C3	T3S2	T3S3	T3S2R4	OTROS	A	B	C	K'	D	LATITUD	LONGITUD
T. C. Puebla - Córdoba (Cuota)	0.00	3	0	9344	0.4	71.4	5.7	7.9	3.2	6.1	1.6	2.7	1.0	71.8	5.7	22.5	0.068	0.503	18.818104	-97.491108
T. Der. Cuacnopalan	1.80	3	0	8374	0.4	69.7	7.0	7.9	3.1	6.3	1.5	3.2	0.9	70.1	7.0	22.9	0.066	0.508	18.810302	-97.490528
Caseta de Cobro Tehuacán	40.00	2	0	9137	0.3	72.8	7.1	5.1	4.9	5.4	0.9	2.9	0.6	73.1	7.1	19.8	0.083	0.500	18.487160	-97.456032
T. C. Puebla - Tehuacán	40.00	3	0	4828	0.5	63.0	9.1	10.5	4.5	6.0	1.8	3.7	0.9	63.5	9.1	27.4	0.073	0.507	18.483085	-97.456466
X. C. Tehuacán - Huajuapán de León	48.00	3	0	5736	0.8	68.0	7.6	8.9	3.8	5.5	1.6	3.1	0.7	68.8	7.6	23.6	0.065	0.515	18.423554	-97.413239
T. Izq. San Gabriel Chilac	61.00	3	0	5019	0.6	65.5	8.0	9.0	5.4	5.4	1.7	3.6	0.8	66.1	8.0	25.9	0.075	0.531	18.297322	-97.349162

PUEBLA

22 CARR: Cuacnopalan - Oaxaca (Cuota)

CLAVE: 00109

RUTA: MEX-135D

AÑO: 2015

LUGAR	ESTACION				CLASIFICACION VEHICULAR EN PORCIENTO										COORDENADAS					
	KM	TE	SC	TDPA	M	A	B	C2	C3	T3S2	T3S3	T3S2R4	OTROS	A	B	C	K'	D	LATITUD	LONGITUD
Caseta de Cobro Miahuatlán	71.42	2	0	4794	0.4	66.3	8.6	6.4	7.3	5.7	1.1	3.5	0.7	66.7	8.6	24.7	0.083	0.500	18.264654	-97.315569
Lim. Edos. Term. Pue. Ppia. Oax.	83.50																			
Caseta de Cobro Coixtlahuaca	141.30	2	0	4044	0.4	65.9	9.0	5.6	7.1	6.1	1.0	4.1	0.8	66.3	9.0	24.7	0.083	0.500	17.726231	-97.351913
T. Izq. Asunción Nochistlán	174.90	1	0	4438	0.8	62.1	9.6	10.4	4.4	5.7	1.8	4.2	1.0	62.9	9.6	27.5	0.061	0.511	17.468034	-97.250245
T. Izq. Asunción Nochistlán	175.50	3	0	6431	0.8	66.1	6.5	12.0	3.6	5.3	1.4	3.4	0.9	66.9	6.5	26.6	0.067	0.506	17.457546	-97.243029
Caseta de Cobro Huitzo	220.00	2	0	6151	0.4	77.5	5.6	4.5	4.5	3.8	0.7	2.5	0.5	77.9	5.6	16.5	0.083	0.500	17.274916	-96.915367
T. C. Huajuapán de León - Oaxaca	242.70	1	1	3649	1.8	72.1	4.8	11.1	3.2	3.4	1.0	2.1	0.5	73.9	4.8	21.3	0.068	0.510	17.147452	-96.784714
T. C. Huajuapán de León - Oaxaca	242.70	1	2	3499	1.9	68.9	5.4	12.9	3.3	3.8	1.0	2.4	0.4	70.8	5.4	23.8	0.079	0.510	17.147452	-96.784714

23 CARR: Ent. Tulancingo - Venta Grande (Cuota)

CLAVE: 00026

RUTA: MEX-132D

AÑO: 2015

LUGAR	ESTACION				CLASIFICACION VEHICULAR EN PORCIENTO										COORDENADAS					
	KM	TE	SC	TDPA	M	A	B	C2	C3	T3S2	T3S3	T3S2R4	OTROS	A	B	C	K'	D	LATITUD	LONGITUD
T. C. Pachuca - Tuxpam	0.00																			
T. Izq. Acatlán	7.80	1	0	11290	0.2	82.7	4.6	5.3	2.3	2.8	1.3	0.6	0.2	82.9	4.6	12.5	0.074	0.510	20.105833	-98.405233
T. Izq. Acatlán	7.80	3	0	10319	0.2	83.5	3.9	5.5	2.5	2.1	1.5	0.6	0.2	83.7	3.9	12.4	0.085	0.502	20.105833	-98.405233
X. C. Pachuca - Tuxpam	21.80	1	0	9015	0.2	80.6	4.5	6.4	2.2	3.5	1.9	0.5	0.2	80.8	4.5	14.7	0.096	0.504	20.149033	-98.294517
Caseta de Cobro San Alejo (Tejocotal)	21.80	2	0	7184	0.5	74.9	6.3	4.4	4.7	4.6	1.7	2.3	0.6	75.4	6.3	18.3	0.115	0.500	20.147597	-98.285760
T. C. Tlaxco - Tejocotal (Cuota)	39.60	1	0	9040	0.3	82.5	3.8	5.7	2.1	3.7	1.3	0.4	0.2	82.8	3.8	13.4	0.091	0.507	20.140283	-98.130333

24 CARR: Libramiento de San Martín Texmelucan

CLAVE: 21014

RUTA: MEX-057D

AÑO: 2015

LUGAR	ESTACION				CLASIFICACION VEHICULAR EN PORCIENTO										COORDENADAS					
	KM	TE	SC	TDPA	M	A	B	C2	C3	T3S2	T3S3	T3S2R4	OTROS	A	B	C	K'	D	LATITUD	LONGITUD
T. C. México - Puebla (Cuota)	135.90	1	1	9171	0.9	65.0	5.0	5.3	2.9	12.5	3.1	4.5	0.8	65.9	5.0	29.1	0.065	0.523	19.269658	-98.420302
T. C. México - Puebla (Cuota)	135.90	1	2	8363	0.8	61.5	5.3	6.2	3.1	13.4	3.6	5.1	1.0	62.3	5.3	32.4	0.082	0.523	19.269661	-98.420306
T. C. San Martín Texmelucan - Ocotoxco Cuota	139.80																			

25 CARR: México - Puebla (Cuota)

CLAVE: 00450

RUTA: MEX-150D

AÑO: 2015

LUGAR	ESTACION				CLASIFICACION VEHICULAR EN PORCIENTO										COORDENADAS					
	KM	TE	SC	TDPA	M	A	B	C2	C3	T3S2	T3S3	T3S2R4	OTROS	A	B	C	K'	D	LATITUD	LONGITUD
México	0.00																			
Ent. Concordia	17.00	3	1	62425	1.2	84.9	3.5	4.1	0.9	2.4	2.3	0.5	0.2	86.1	3.5	10.4	0.058	0.513	19.354806	-98.990815
Ent. Concordia	17.00	3	2	59759	1.3	83.1	3.9	4.4	1.0	2.9	2.7	0.5	0.2	84.4	3.9	11.7	0.058	0.513	19.354806	-98.990815

PUEBLA

25 CARR : México - Puebla (Cuota)

CLAVE: 00450

ruta: MEX-150D

AÑO: 2015

LUGAR	ESTACION				CLASIFICACION VEHICULAR EN PORCIENTO													COORDENADAS		
	KM	TE	SC	TDPA	M	A	B	C2	C3	T3S2	T3S3	T3S2R4	OTROS	A	B	C	K'	D	LATITUD	LONGITUD
Lim. Edos. Term. D. F. Ppia. Mex.	17.51																			
Av. Las Torres (Eje 6)	19.27	1	1	68180	1.8	86.8	1.7	2.8	1.0	1.9	2.0	1.0	1.0	88.6	1.7	9.7	0.055	0.507	19.347720	-98.983350
Av. Las Torres (Eje 6)	19.27	1	2	69913	1.8	85.4	2.0	3.0	1.1	2.1	2.2	1.2	1.2	87.2	2.0	10.8	0.057	0.507	19.347720	-98.983350
Av. Las Torres (Eje 6)	19.27	3	1	71413	1.4	87.7	2.0	4.0	1.0	1.3	1.4	0.6	0.6	89.1	2.0	8.9	0.067	0.510	19.340620	-98.976880
Av. Las Torres (Eje 6)	19.27	3	2	76431	1.4	86.3	2.2	4.7	1.2	1.4	1.5	0.7	0.6	87.7	2.2	10.1	0.054	0.510	19.340620	-98.976880
Eje 10 Sur	22.80	1	1	84788	0.1	71.8	4.2	8.0	3.5	5.4	3.3	1.7	2.0	71.9	4.2	23.9	0.052	0.503	19.327166	-98.962557
Eje 10 Sur	22.80	1	2	84262	0.1	68.8	4.5	9.0	4.0	6.0	3.5	1.9	2.2	68.9	4.5	26.6	0.052	0.503	19.327166	-98.962557
Eje 10 Sur	22.80	3	1	72850	0.0	74.8	5.2	11.0	3.4	2.9	1.3	1.2	0.2	74.8	5.2	20.0	0.051	0.508	19.320880	-98.955220
Eje 10 Sur	22.80	3	2	75347	0.0	80.7	3.8	8.2	2.4	2.4	1.2	1.0	0.3	80.7	3.8	15.5	0.053	0.508	19.320880	-98.955220
X. C. Santa Bárbara - Izúcar de Matamoros	32.14	1	1	51295	0.0	75.4	6.6	10.1	2.1	3.3	1.0	1.3	0.2	75.4	6.6	18.0	0.055	0.516	19.292420	-98.891850
X. C. Santa Bárbara - Izúcar de Matamoros	32.14	1	2	48092	0.0	82.4	4.0	5.3	2.4	3.2	1.0	1.5	0.2	82.4	4.0	13.6	0.056	0.516	19.292420	-98.891850
X. C. Santa Bárbara - Izúcar de Matamoros	32.14	3	1	12313	0.1	81.2	3.5	5.4	2.5	4.6	1.2	1.3	0.2	81.3	3.5	15.2	0.094	0.505	19.294248	-98.878428
X. C. Santa Bárbara - Izúcar de Matamoros	32.14	3	2	12551	0.1	80.8	2.7	6.4	3.4	4.1	1.2	1.1	0.2	80.9	2.7	16.4	0.106	0.505	19.294248	-98.878428
Caseta de Cobro San Marcos	33.30	2	1	15661	0.3	74.0	7.5	5.0	4.5	6.0	0.4	2.0	0.3	74.3	7.5	18.2	0.068	0.500	19.296361	-98.870726
Caseta de Cobro San Marcos	33.30	2	2	15661	0.3	74.0	7.5	5.0	4.5	6.0	0.4	2.0	0.3	74.3	7.5	18.2	0.068	0.500	19.296361	-98.870726
T. Izq. Río Frío	63.79	3	1	16772	0.1	81.9	3.5	5.5	2.3	3.9	1.7	0.9	0.2	82.0	3.5	14.5	0.077	0.517	19.350760	-98.658740
T. Izq. Río Frío	63.79	3	2	15690	0.1	81.1	3.5	6.3	2.3	3.9	1.3	1.3	0.2	81.2	3.5	15.3	0.097	0.517	19.350760	-98.658740
Lim. Edos. Term. Mex. Ppia. Pue.	65.46																			
T. Izq. Tlaxcala	90.61	1	1	16470	1.3	73.2	8.1	7.6	2.6	4.3	0.5	1.9	0.5	74.5	8.1	17.4	0.068	0.504	19.273806	-98.435995
T. Izq. Tlaxcala	90.61	1	2	16734	1.2	70.1	8.9	9.1	2.8	4.8	0.5	2.1	0.5	71.3	8.9	19.8	0.078	0.504	19.273809	-98.435997
T. Izq. Tlaxcala	90.61	3	1	22072	0.5	72.4	5.4	6.9	2.6	7.0	1.4	2.9	0.9	72.9	5.4	21.7	0.062	0.511	19.260735	-98.416160
T. Izq. Tlaxcala	90.61	3	2	23029	0.7	69.1	5.6	7.5	3.0	8.2	1.6	3.3	1.0	69.8	5.6	24.6	0.072	0.511	19.261828	-98.417572
Caseta de Cobro San Martín Texmelucan	91.17	2	1	22440	0.3	70.3	7.3	4.6	4.4	8.3	1.0	3.4	0.4	70.6	7.3	22.1	0.068	0.500	19.241098	-98.385680
Caseta de Cobro San Martín Texmelucan	91.17	2	2	22440	0.3	70.3	7.3	4.6	4.4	8.3	1.0	3.4	0.4	70.6	7.3	22.1	0.068	0.500	19.241098	-98.385680
Lim. Edos. Term. Pue. Ppia. Tlax.	99.11																			
T. Der. Aeropuerto Internacional De Puebla	101.10	3	1	27985	0.8	74.4	6.2	4.7	3.2	5.8	1.3	2.7	0.9	75.2	6.2	18.6	0.063	0.502	19.208126	-98.348321
T. Der. Aeropuerto Internacional De Puebla	101.10	3	2	27772	0.7	71.9	6.7	5.2	3.8	6.4	1.3	2.9	1.1	72.6	6.7	20.7	0.070	0.502	19.208122	-98.348315
X. C. Xoxtla - Huactzinco	107.98	1	1	28400	0.8	73.1	6.2	4.8	3.5	6.7	1.3	2.7	0.9	73.9	6.2	19.9	0.062	0.506	19.178728	-98.312462
X. C. Xoxtla - Huactzinco	107.98	1	2	27772	0.7	70.5	6.8	5.3	4.0	7.0	1.4	3.2	1.1	71.2	6.8	22.0	0.070	0.506	19.178730	-98.312454
X. C. Xoxtla - Huactzinco	107.98	3	1	34171	1.4	72.6	5.1	7.4	2.5	6.1	1.6	2.6	0.7	74.0	5.1	20.9	0.064	0.507	19.171767	-98.304135
X. C. Xoxtla - Huactzinco	107.98	3	2	33291	1.2	70.4	5.6	8.3	2.8	6.3	1.7	3.0	0.7	71.6	5.6	22.8	0.069	0.507	19.171766	-98.304131
Lim. Edos. Term. Tlax. Ppia. Pue.	108.00																			
Anillo Periferico Poniente De Puebla (Lateral)	114.00	3	1	25922	0.6	83.8	3.1	6.3	2.8	1.5	0.5	0.7	0.7	84.4	3.1	12.5	0.098	0.523	19.128618	-98.265607
Anillo Periferico Poniente De Puebla (Central)	114.00	3	1	22258	0.8	74.3	5.3	4.8	3.5	6.9	0.9	2.8	0.7	75.1	5.3	19.6	0.062	0.522	19.130353	-98.267410
Anillo Periferico Poniente De Puebla (Central)	114.00	3	2	20401	0.9	72.3	6.1	5.1	3.8	7.1	0.9	3.0	0.8	73.2	6.1	20.7	0.071	0.522	19.128859	-98.265218

PUEBLA

25 CARR: México - Puebla (Cuota)

CLAVE: 00450

RUTA: MEX-150D

AÑO: 2015

LUGAR	ESTACION				CLASIFICACION VEHICULAR EN PORCIENTO														COORDENADAS	
	KM	TE	SC	TDPA	M	A	B	C2	C3	T3S2	T3S3	T3S2R4	OTROS	A	B	C	K'	D	LATITUD	LONGITUD
Anillo Periferico Poniente De Puebla (Lateral)	114.00	3	2	28477	0.5	82.1	3.6	7.0	3.1	1.6	0.5	0.8	0.8	82.6	3.6	13.8	0.105	0.523	19.128889	-98.265278
Boulevard Hermanos Serdán	120.46	3	1	51585	0.7	79.3	5.0	6.0	3.6	3.0	0.6	1.6	0.2	80.0	5.0	15.0	0.065	0.503	19.093415	-98.224389
Boulevard Hermanos Serdán	120.46	3	2	50876	0.7	76.6	6.0	6.8	3.8	3.6	0.6	1.7	0.2	77.3	6.0	16.7	0.068	0.503	19.093405	-98.224375
X. C. Puebla - Tlaxcala (Central)	123.00	3	1	30688	0.7	76.6	3.9	7.4	3.4	4.5	0.9	2.3	0.3	77.3	3.9	18.8	0.071	0.529	19.085501	-98.196185
X. C. Puebla - Tlaxcala (Lateral)	123.00	3	1	28433	0.7	85.4	6.8	3.5	1.7	1.1	0.5	0.1	0.2	86.1	6.8	7.1	0.072	0.529	19.085501	-98.196185
X. C. Puebla - Tlaxcala (Central)	123.00	3	2	42957	0.6	75.4	4.1	7.6	3.7	5.0	1.0	2.3	0.3	76.0	4.1	19.9	0.073	0.529	19.085513	-98.196186
X. C. Puebla - Tlaxcala (Lateral)	123.00	3	2	23327	0.8	83.7	7.8	3.8	1.9	1.2	0.5	0.1	0.2	84.5	7.8	7.7	0.090	0.529	19.085513	-98.196186
T. C. Puebla - Tlaxcala	124.90																			

26 CARR: Puebla - Acatzingo (Cuota)

CLAVE: 00485

RUTA: MEX-150D

AÑO: 2015

LUGAR	ESTACION				CLASIFICACION VEHICULAR EN PORCIENTO														COORDENADAS	
	KM	TE	SC	TDPA	M	A	B	C2	C3	T3S2	T3S3	T3S2R4	OTROS	A	B	C	K'	D	LATITUD	LONGITUD
Puebla	0.00																			
Distribuidor Estadio Cuauhtemoc (PUEBLA)	2.56	3	1	31970	1.9	76.2	3.6	7.7	2.6	3.9	1.2	2.2	0.7	78.1	3.6	18.3	0.067	0.514	19.069906	-98.129482
Distribuidor Estadio Cuauhtemoc (PUEBLA)	2.56	3	2	33793	1.3	73.5	4.1	9.0	2.8	4.4	1.4	2.6	0.9	74.8	4.1	21.1	0.085	0.514	19.069902	-98.129483
T. Der. Amozoc (Caseta de Cobro)	21.55	1	1	19048	1.1	69.1	6.9	8.6	3.2	5.2	1.8	3.5	0.6	70.2	6.9	22.9	0.074	0.500	19.050445	-98.034947
T. Der. Amozoc (Caseta de Cobro)	21.55	1	2	19020	0.4	67.6	7.2	9.0	3.7	5.7	2.0	3.7	0.7	68.0	7.2	24.8	0.099	0.500	19.050433	-98.034938
Caseta de Cobro Amozoc	21.55	2	1	14836	0.2	67.5	7.0	4.6	5.4	7.7	1.4	5.6	0.6	67.7	7.0	25.3	0.065	0.500	19.049845	-98.032307
Caseta de Cobro Amozoc	21.55	2	2	14836	0.2	67.5	7.0	4.6	5.4	7.7	1.4	5.6	0.6	67.7	7.0	25.3	0.069	0.500	19.049845	-98.032307
T. Der. Amozoc (Caseta de Cobro)	21.55	3	1	15277	1.0	72.0	3.0	9.3	2.9	5.6	2.0	3.6	0.6	73.0	3.0	24.0	0.067	0.514	19.040885	-98.000864
T. Der. Amozoc (Caseta de Cobro)	21.55	3	2	14419	1.3	68.9	3.3	10.0	3.4	6.1	2.1	4.3	0.6	70.2	3.3	26.5	0.067	0.514	19.040914	-98.000859
T. Izq. Acatzingo	47.10	1	1	18964	0.7	68.4	6.7	6.7	3.3	7.0	2.3	3.9	1.0	69.1	6.7	24.2	0.061	0.503	18.977993	-97.814148
T. Izq. Acatzingo	47.10	1	2	19162	1.0	65.0	7.7	7.7	3.5	7.5	2.4	4.2	1.0	66.0	7.7	26.3	0.055	0.503	18.977991	-97.814155

27 CARR: San Martín Texmelucan - Tlaxcala - El Molinito (Cuota)

CLAVE: 00212

RUTA: MEX-117D

AÑO: 2015

LUGAR	ESTACION				CLASIFICACION VEHICULAR EN PORCIENTO														COORDENADAS	
	KM	TE	SC	TDPA	M	A	B	C2	C3	T3S2	T3S3	T3S2R4	OTROS	A	B	C	K'	D	LATITUD	LONGITUD
T. C. México - Puebla (Cuota)	0.00																			
X. C. San Martín Texmelucan - Tlaxcala	1.80	1	0	3832	3.7	80.9	2.2	8.7	1.4	1.8	0.9	0.3	0.1	84.6	2.2	13.2	0.124	0.539	19.290432	-98.418917
Lim. Edos. Term. Pue. Ppia. Tlax.	4.05																			
Caseta de Cobro San Martín Texmelucan	5.45	2	1	2936	0.4	78.7	8.9	3.8	1.7	3.5	1.2	1.4	0.4	79.1	8.9	12.0	0.088	0.500	19.301568	-98.404044
Caseta de Cobro San Martín Texmelucan	5.45	2	2	2936	0.4	78.7	8.9	3.8	1.7	3.5	1.2	1.4	0.4	79.1	8.9	12.0	0.088	0.500	19.301568	-98.404044
X. C. San Martín Texmelucan - Tlaxcala (Trébol)	24.75	1	1	15708	1.2	90.7	1.7	3.7	0.4	1.0	0.6	0.5	0.2	91.9	1.7	6.4	0.099	0.510	19.325336	-98.251065

PUEBLA

27 CARR: San Martín Texmelucan - Tlaxcala - El Molinito (Cuota)

CLAVE: 00212

RUTA: MEX-117D

AÑO: 2015

LUGAR	ESTACION				CLASIFICACION VEHICULAR EN PORCIENTO										COORDENADAS					
	KM	TE	SC	TDPA	M	A	B	C2	C3	T3S2	T3S3	T3S2R4	OTROS	A	B	C	K'	D	LATITUD	LONGITUD
X. C. San Martín Texmelucan - Tlaxcala (Trébol)	24.75	1	2	15096	1.0	90.3	1.9	3.8	0.4	1.2	0.6	0.6	0.2	91.3	1.9	6.8	0.085	0.510	19.325338	-98.251065
X. C. San Martín Texmelucan - Tlaxcala (Trébol)	24.75	3	1	16260	1.6	87.7	2.1	6.1	0.5	0.8	0.5	0.6	0.1	89.3	2.1	8.6	0.090	0.509	19.331674	-98.239898
X. C. San Martín Texmelucan - Tlaxcala (Trébol)	24.75	3	2	15716	1.0	86.7	2.5	7.2	0.5	0.9	0.5	0.6	0.1	87.7	2.5	9.8	0.083	0.509	19.331661	-98.239915
T. Der. San Pablo Apetatitlán	29.00	3	1	33187	0.8	88.5	1.2	6.0	0.7	1.3	0.9	0.4	0.2	89.3	1.2	9.5	0.073	0.509	19.347118	-98.195029
T. Izq. Tizatlán	29.00	3	1	14267	0.7	85.9	2.1	9.0	0.6	0.8	0.4	0.4	0.1	86.6	2.1	11.3	0.092	0.503	19.337784	-98.214031
T. Der. San Pablo Apetatitlán	29.00	3	2	34406	0.8	87.8	1.2	6.4	0.8	1.4	1.0	0.4	0.2	88.6	1.2	10.2	0.078	0.509	19.347130	-98.195027
T. Izq. Tizatlán	29.00	3	2	15562	0.8	85.0	2.4	9.4	0.6	0.9	0.4	0.4	0.1	85.8	2.4	11.8	0.082	0.503	19.337786	-98.214026
Ocotoxco	35.20	1	1	27249	0.9	86.8	1.4	6.9	0.8	1.7	0.8	0.5	0.2	87.7	1.4	10.9	0.081	0.501	19.385478	-98.178297
Ocotoxco	35.20	1	2	27366	0.8	85.7	1.5	7.7	0.9	1.8	0.9	0.5	0.2	86.5	1.5	12.0	0.078	0.501	19.385475	-98.178294

28 CARR: Tejocotal - Nuevo Necaxa (Cuota)

CLAVE: 00211

RUTA: MEX-132D

AÑO: 2015

LUGAR	ESTACION				CLASIFICACION VEHICULAR EN PORCIENTO										COORDENADAS					
	KM	TE	SC	TDPA	M	A	B	C2	C3	T3S2	T3S3	T3S2R4	OTROS	A	B	C	K'	D	LATITUD	LONGITUD
T. C. Tlaxco - Tejocotal (Cuota)	0.00	3	0	8130	0.2	83.0	3.8	5.2	1.8	2.8	2.0	0.9	0.3	83.2	3.8	13.0	0.099	0.509	20.135883	-98.113267
Lim. Edos. Term. Hgo. Ppia. Pue.	2.10																			
Nuevo Necaxa	17.00	1	1	3870	0.3	74.1	5.2	7.6	2.9	4.9	2.2	2.2	0.6	74.4	5.2	20.4	0.097	0.515	20.177553	-98.026878
Nuevo Necaxa	17.00	1	2	3649	0.7	72.1	5.5	8.1	3.2	5.1	2.3	2.4	0.6	72.8	5.5	21.7	0.094	0.515	20.177580	-98.026854
Caseta de Cobro Nuevo Necaxa	17.00	2	0	1306	0.3	76.3	1.3	6.3	5.5	3.9	2.7	3.1	0.6	76.6	1.3	22.1	0.092	0.500	20.186719	-98.029735
T. C. Pachuca - Tuxpam	18.70																			

29 CARR: Amayuca - Izúcar de Matamoros

CLAVE: 00030

RUTA: MOR-031-PUE

AÑO: 2015

LUGAR	ESTACION				CLASIFICACION VEHICULAR EN PORCIENTO										COORDENADAS					
	KM	TE	SC	TDPA	M	A	B	C2	C3	T3S2	T3S3	T3S2R4	OTROS	A	B	C	K'	D	LATITUD	LONGITUD
Amayuca	0.00																			
X. C. Santa Bárbara - Izúcar de Matamoros	0.66	3	1	7259	0.1	92.2	1.2	3.3	1.9	0.6	0.2	0.4	0.1	92.3	1.2	6.5	0.072	0.507	18.713960	-98.796770
X. C. Santa Bárbara - Izúcar de Matamoros	0.66	3	2	7053	0.1	91.7	1.2	3.6	2.1	0.5	0.3	0.3	0.2	91.8	1.2	7.0	0.069	0.507	18.713960	-98.796770
Jonacatepec	3.84	3	1	3727	0.3	91.9	1.1	3.6	1.1	0.8	0.5	0.5	0.2	92.2	1.1	6.7	0.080	0.504	18.671240	-98.805660
Jonacatepec	3.84	3	2	3791	0.2	90.5	2.4	4.2	1.2	0.7	0.4	0.3	0.1	90.7	2.4	6.9	0.084	0.504	18.671240	-98.805660
T. Der. Tepalcingo	14.50	3	1	2697	0.3	90.5	2.4	4.0	1.1	0.8	0.5	0.3	0.1	90.8	2.4	6.8	0.082	0.518	18.590410	-98.834210
T. Der. Tepalcingo	14.50	3	2	2506	0.2	89.2	1.9	5.9	1.1	0.8	0.5	0.3	0.1	89.4	1.9	8.7	0.085	0.518	18.590410	-98.834210
Axochiapan	29.50	1	0	5740	0.2	87.3	2.5	5.8	2.1	0.9	0.5	0.4	0.3	87.5	2.5	10.0	0.074	0.507	18.511340	-98.775890
Axochiapan	29.50	3	1	3818	0.2	90.4	2.3	4.4	0.9	0.8	0.4	0.2	0.4	90.6	2.3	7.1	0.056	0.507	18.478810	-98.736270
Axochiapan	29.50	3	2	4098	13.6	77.1	2.0	4.5	0.4	1.3	0.7	0.2	0.2	90.7	2.0	7.3	0.065	0.505	18.478810	-98.736270

PUEBLA

29 CARR: Amayuca - Izúcar de Matamoros

CLAVE: 00030

RUTA: MOR-031-PUE

AÑO: 2015

LUGAR	ESTACION				CLASIFICACION VEHICULAR EN PORCIENTO														COORDENADAS	
	KM	TE	SC	TDPA	M	A	B	C2	C3	T3S2	T3S3	T3S2R4	OTROS	A	B	C	K'	D	LATITUD	LONGITUD
Barranca del Muerto	38.40	3	0	2935	6.4	76.8	1.4	4.6	4.8	2.2	1.4	2.0	0.4	83.2	1.4	15.4	0.078	0.503	18.475444	-98.693794
Lim. Edos. Term. Mor. Ppia. Pue.	40.00																			
T. Der. Chietla	53.00	1	0	5244	3.5	86.4	0.2	6.0	0.5	2.4	0.5	0.0	0.5	89.9	0.2	9.9	0.074	0.507	18.526792	-98.585518
X. C. Santa Bárbara - Izúcar de Matamoros	67.50	1	0	8901	9.8	73.7	0.4	6.5	1.5	5.2	1.0	0.9	1.0	83.5	0.4	16.1	0.083	0.501	18.597613	-98.485801
X. C. Santa Bárbara - Izúcar de Matamoros	67.50	3	1	10278	9.9	78.8	0.8	3.4	0.9	1.9	2.6	1.0	0.7	88.7	0.8	10.5	0.078	0.517	18.600963	-98.474468
X. C. Santa Bárbara - Izúcar de Matamoros	67.50	3	2	9592	10.5	77.1	0.9	3.6	1.0	2.2	2.9	1.1	0.7	87.6	0.9	11.5	0.070	0.517	18.600956	-98.474474
Izúcar de Matamoros	69.00																			

30 CARR: Azumbilla - Alcomunga

CLAVE: 21001

RUTA: PUE

AÑO: 2015

LUGAR	ESTACION				CLASIFICACION VEHICULAR EN PORCIENTO														COORDENADAS	
	KM	TE	SC	TDPA	M	A	B	C2	C3	T3S2	T3S3	T3S2R4	OTROS	A	B	C	K'	D	LATITUD	LONGITUD
T. C. Tehuacán - Córdoba	0.00	3	0	1359	3.2	76.4	0.5	15.4	1.7	2.0	0.5	0.1	0.2	79.6	0.5	19.9	0.086	0.510	18.635110	-97.397178
Alcomunga	65.00																			

31 CARR: Cholula - Puebla (Vía Quetzalcóatl)

CLAVE: 21203

RUTA: PUE

AÑO: 2015

LUGAR	ESTACION				CLASIFICACION VEHICULAR EN PORCIENTO														COORDENADAS	
	KM	TE	SC	TDPA	M	A	B	C2	C3	T3S2	T3S3	T3S2R4	OTROS	A	B	C	K'	D	LATITUD	LONGITUD
Cholula	0.00	3	1	25398	1.5	93.2	0.2	2.2	0.7	0.5	1.6	0.0	0.1	94.7	0.2	5.1	0.093	0.528	19.059532	-98.288420
Cholula	0.00	3	2	28354	1.5	92.7	0.2	2.5	0.8	0.5	1.7	0.0	0.1	94.2	0.2	5.6	0.075	0.528	19.059542	-98.288412
Puebla	12.00	1	1	28768	1.0	93.2	0.6	2.8	0.2	0.3	1.7	0.1	0.1	94.2	0.6	5.2	0.123	0.507	19.059651	-98.243100
Puebla	12.00	1	2	28019	0.9	92.6	0.6	3.4	0.2	0.3	1.8	0.1	0.1	93.5	0.6	5.9	0.097	0.507	19.059644	-98.243105

32 CARR: Cuacnopalan - Santa Catarina Los Reyes

CLAVE: 00109

RUTA: PUE

AÑO: 2015

LUGAR	ESTACION				CLASIFICACION VEHICULAR EN PORCIENTO														COORDENADAS	
	KM	TE	SC	TDPA	M	A	B	C2	C3	T3S2	T3S3	T3S2R4	OTROS	A	B	C	K'	D	LATITUD	LONGITUD
Cuacnopalan	0.00	3	0	1795	6.0	79.1	1.4	8.4	2.1	2.2	0.5	0.1	0.2	85.1	1.4	13.5	0.076	0.504	18.825204	-97.499590
Santa Catarina Los Reyes	13.00	1	0	503	3.6	82.0	0.7	11.2	0.5	1.3	0.6	0.0	0.1	85.6	0.7	13.7	0.093	0.506	18.882533	-97.439549

PUEBLA

33 CARR : Cuapiaxtla - Acatlán de Osorio

CLAVE: 21014

ruta: PUE

AÑO : 2015

LUGAR	ESTACION				CLASIFICACION VEHICULAR EN PORCIENTO													COORDENADAS		
	KM	TE	SC	TDPA	M	A	B	C2	C3	T3S2	T3S3	T3S2R4	OTROS	A	B	C	K'	D	LATITUD	LONGITUD
T. C. Puebla - Tehuacán	0.00	3	0	6117	4.0	77.4	0.8	10.0	2.1	4.0	0.9	0.3	0.5	81.4	0.8	17.8	0.068	0.500	18.917226	-97.832982
Molcaxac	23.18	1	0	4935	2.2	81.3	0.8	9.9	1.9	2.4	0.8	0.3	0.4	83.5	0.8	15.7	0.080	0.504	18.743526	-97.904998
Tepexi de Rodríguez	45.35	1	0	3073	1.6	82.3	1.6	11.7	0.8	1.5	0.3	0.0	0.2	83.9	1.6	14.5	0.104	0.532	18.587698	-97.928922
Tepexi de Rodríguez	45.35	3	0	4165	2.0	81.8	0.6	10.9	0.8	2.7	0.6	0.1	0.5	83.8	0.6	15.6	0.120	0.510	18.572805	-97.928205
San Juan Ixcaquixtla	63.35	1	0	4391	2.1	83.8	0.8	8.9	1.0	2.8	0.4	0.0	0.2	85.9	0.8	13.3	0.083	0.504	18.469293	-97.841450
Acatlán de Osorio	127.00	1	0	3121	9.3	81.8	0.1	5.2	0.4	2.5	0.3	0.1	0.3	91.1	0.1	8.8	0.086	0.527	18.235725	-98.033654

34 CARR : Izúcar de Matamoros - Tepexi de Rodríguez

CLAVE: 21014

ruta: PUE

AÑO : 2015

LUGAR	ESTACION				CLASIFICACION VEHICULAR EN PORCIENTO													COORDENADAS		
	KM	TE	SC	TDPA	M	A	B	C2	C3	T3S2	T3S3	T3S2R4	OTROS	A	B	C	K'	D	LATITUD	LONGITUD
Izúcar de Matamoros	0.00	3	0	3455	12.0	78.8	0.2	4.9	1.0	2.2	0.5	0.1	0.3	90.8	0.2	9.0	0.076	0.514	18.610381	-98.451216
Zacapala	46.00	1	0	552	5.7	80.0	0.6	10.5	2.2	0.6	0.4	0.0	0.0	85.7	0.6	13.7	0.087	0.504	18.592330	-98.072483
T. Der. Tepexi de Rodríguez	62.00	1	0	1748	1.6	85.7	0.4	9.2	0.8	1.3	0.7	0.0	0.3	87.3	0.4	12.3	0.093	0.504	18.637314	-97.934486

35 CARR : Ramal a Aeropuerto Hnos. Serdán

CLAVE: 21591

ruta: PUE

AÑO : 2015

LUGAR	ESTACION				CLASIFICACION VEHICULAR EN PORCIENTO													COORDENADAS		
	KM	TE	SC	TDPA	M	A	B	C2	C3	T3S2	T3S3	T3S2R4	OTROS	A	B	C	K'	D	LATITUD	LONGITUD
T. Aut. México - Puebla (Cuota)	0.00	3	0	8824	1.2	79.3	1.4	8.1	2.5	5.2	1.0	0.6	0.7	80.5	1.4	18.1	0.073	0.508	19.212324	-98.358709
T. México - Puebla (Libre)	9.00	1	0	5727	2.2	79.7	1.7	6.3	3.9	4.5	0.8	0.4	0.5	81.9	1.7	16.4	0.080	0.514	19.139025	-98.373793

36 CARR : Ramal a Jolalpan

CLAVE: 00143

ruta: MOR-PUE

AÑO : 2015

LUGAR	ESTACION				CLASIFICACION VEHICULAR EN PORCIENTO													COORDENADAS		
	KM	TE	SC	TDPA	M	A	B	C2	C3	T3S2	T3S3	T3S2R4	OTROS	A	B	C	K'	D	LATITUD	LONGITUD
Axochiapan	0.00	3	0	2549	0.3	92.5	1.5	3.0	1.2	0.9	0.5	0.1	0.0	92.8	1.5	5.7	0.079	0.507	18.482170	-98.748340
Lim. Edos. Term. Mor. Ppia. Pue.	4.00																			
Jolalpan	24.00																			

37 CARR : Ramal a Tetela de Ocampo

CLAVE: 21587

ruta: PUE

AÑO : 2015

LUGAR	ESTACION				CLASIFICACION VEHICULAR EN PORCIENTO													COORDENADAS		
	KM	TE	SC	TDPA	M	A	B	C2	C3	T3S2	T3S3	T3S2R4	OTROS	A	B	C	K'	D	LATITUD	LONGITUD
T. C. Apizaco - Tejocotal	0.00	3	0	2769	3.0	81.8	1.8	9.1	1.1	2.1	0.6	0.2	0.3	84.8	1.8	13.4	0.083	0.511	19.803769	-98.023448

PUEBLA

37 CARR: Ramal a Tetela de Ocampo

CLAVE: 21587

RUTA: PUE

AÑO: 2015

LUGAR	ESTACION				CLASIFICACION VEHICULAR EN PORCIENTO														COORDENADAS	
	KM	TE	SC	TDPA	M	A	B	C2	C3	T3S2	T3S3	T3S2R4	OTROS	A	B	C	K'	D	LATITUD	LONGITUD
Tetela de Ocampo	45.00	1	0	2697	5.8	81.4	1.0	7.5	0.4	2.7	0.5	0.2	0.5	87.2	1.0	11.8	0.073	0.514	19.828030	-97.822425

38 CARR: Ramal a Zihuateutla

CLAVE: 21590

RUTA: PUE

AÑO: 2015

LUGAR	ESTACION				CLASIFICACION VEHICULAR EN PORCIENTO														COORDENADAS	
	KM	TE	SC	TDPA	M	A	B	C2	C3	T3S2	T3S3	T3S2R4	OTROS	A	B	C	K'	D	LATITUD	LONGITUD
T. C. Pachuca - Tuxpam	0.00	3	0	2129	4.0	87.4	0.3	5.0	0.5	1.7	0.6	0.1	0.4	91.4	0.3	8.3	0.067	0.507	20.233894	-97.964825
La Unión	13.00																			
Zihuateutla	22.00																			

39 CARR: Ramal a Zoquitlán

CLAVE: 21003

RUTA: PUE

AÑO: 2015

LUGAR	ESTACION				CLASIFICACION VEHICULAR EN PORCIENTO														COORDENADAS	
	KM	TE	SC	TDPA	M	A	B	C2	C3	T3S2	T3S3	T3S2R4	OTROS	A	B	C	K'	D	LATITUD	LONGITUD
T. C. Tehuacán - Huitzo	0.00	3	0	1492	10.3	73.3	0.2	12.5	1.2	1.8	0.6	0.0	0.1	83.6	0.2	16.2	0.072	0.500	18.260300	-97.151432
Zoquitlán	32.00																			

40 CARR: San Juan Ixcaquixtla - Pino Suárez

CLAVE: 00486

RUTA: PUE

AÑO: 2015

LUGAR	ESTACION				CLASIFICACION VEHICULAR EN PORCIENTO														COORDENADAS	
	KM	TE	SC	TDPA	M	A	B	C2	C3	T3S2	T3S3	T3S2R4	OTROS	A	B	C	K'	D	LATITUD	LONGITUD
San Juan Ixcaquixtla	0.00	3	0	1145	2.3	84.9	0.3	8.3	2.5	1.0	0.5	0.0	0.2	87.2	0.3	12.5	0.094	0.502	18.408460	-97.823459
San Martín Atexcal	13.00	1	0	993	5.3	78.7	0.8	11.6	1.6	1.2	0.5	0.0	0.3	84.0	0.8	15.2	0.096	0.507	18.400096	-97.742485
San Bartolo Teontepec	42.80	1	0	1283	3.5	81.6	0.8	10.5	1.6	1.2	0.5	0.0	0.3	85.1	0.8	14.1	0.087	0.506	18.486149	-97.533530
T. C. Puebla - Tehuacán	47.10	1	0	3478	4.2	80.2	0.3	10.1	1.2	3.1	0.5	0.1	0.3	84.4	0.3	15.3	0.082	0.534	18.514383	-97.501339

41 CARR: Tecamachalco - Cañada Morelos

CLAVE: 21002

RUTA: PUE

AÑO: 2015

LUGAR	ESTACION				CLASIFICACION VEHICULAR EN PORCIENTO														COORDENADAS	
	KM	TE	SC	TDPA	M	A	B	C2	C3	T3S2	T3S3	T3S2R4	OTROS	A	B	C	K'	D	LATITUD	LONGITUD
Tecamachalco	0.00	3	1	6969	1.9	80.5	1.7	8.4	1.8	2.4	2.0	0.5	0.8	82.4	1.7	15.9	0.078	0.514	18.890811	-97.717330
Tecamachalco	0.00	3	2	7370	1.8	78.8	1.8	9.7	2.0	2.5	2.0	0.5	0.9	80.6	1.8	17.6	0.087	0.514	18.890811	-97.717330
T. Izq. Quecholac	8.00	1	0	10526	2.6	79.3	1.7	5.0	2.3	5.4	1.7	1.9	0.1	81.9	1.7	16.4	0.065	0.500	18.906963	-97.677975
T. C. Cuacnopalan - Cd. Serdán	31.30	3	0	2706	3.2	74.3	2.9	10.0	2.1	4.6	1.2	0.8	0.9	77.5	2.9	19.6	0.081	0.547	18.804723	-97.510413
T. C. San Salvador El Seco - Azumbilla	44.46	1	0	2683	2.3	73.0	3.5	9.7	2.6	5.3	1.1	1.5	1.0	75.3	3.5	21.2	0.075	0.537	18.742807	-97.423419

PUEBLA

42 CARR: Tecamachalco - Quecholac

CLAVE: 21002

RUTA: PUE

AÑO: 2015

LUGAR	ESTACION				CLASIFICACION VEHICULAR EN PORCIENTO										COORDENADAS					
	KM	TE	SC	TDPA	M	A	B	C2	C3	T3S2	T3S3	T3S2R4	OTROS	A	B	C	K'	D	LATITUD	LONGITUD
Tecamachalco	0.00																			
T. C. Puebla - Córdoba (Cuota)	7.80	1	0	10000	1.6	74.0	3.0	8.2	3.1	5.2	1.7	2.2	1.0	75.6	3.0	21.4	0.058	0.511	18.925557	-97.682965
T. C. Puebla - Córdoba (Cuota)	7.80	3	1	2417	3.3	83.9	0.8	9.4	1.5	0.7	0.3	0.0	0.1	87.2	0.8	12.0	0.082	0.508	18.933397	-97.675930
T. C. Puebla - Córdoba (Cuota)	7.80	3	2	2497	3.3	83.2	0.9	10.0	1.5	0.7	0.3	0.0	0.1	86.5	0.9	12.6	0.080	0.508	18.933399	-97.675936
Quecholac	11.20																			

43 CARR: Zacatlán - Zapotitlán

CLAVE: 21580

RUTA: PUE

AÑO: 2015

LUGAR	ESTACION				CLASIFICACION VEHICULAR EN PORCIENTO										COORDENADAS					
	KM	TE	SC	TDPA	M	A	B	C2	C3	T3S2	T3S3	T3S2R4	OTROS	A	B	C	K'	D	LATITUD	LONGITUD
T. C. Apizaco - Tejocotal	0.00	3	0	7531	8.0	75.3	1.9	5.7	0.6	6.0	1.4	0.4	0.7	83.3	1.9	14.8	0.074	0.502	19.941663	-97.963734
Zapotitlán	45.00																			

44 CARR: Atlixco - Jantetelco (Cuota)

CLAVE: 00430

RUTA: PUE-D

AÑO: 2015

LUGAR	ESTACION				CLASIFICACION VEHICULAR EN PORCIENTO										COORDENADAS					
	KM	TE	SC	TDPA	M	A	B	C2	C3	T3S2	T3S3	T3S2R4	OTROS	A	B	C	K'	D	LATITUD	LONGITUD
T. C. Puebla - Izúcar de Matamoros	0.00	3	0	6022	1.0	79.5	3.0	5.9	2.5	4.1	1.3	1.9	0.8	80.5	3.0	16.5	0.095	0.507	18.942304	-98.398764
Lim. Edos. Term. Pue. Ppia. Mor.	48.60																			
T. C. Santa Bárbara - Izúcar de Matamoros	54.90	1	0	6056	1.2	76.0	3.0	7.6	3.7	4.0	1.5	2.1	0.9	77.2	3.0	19.8	0.076	0.507	18.705745	-98.767390

45 CARR: Libres - Teziutlán (Cuota)

CLAVE: 21014

RUTA: PUE-D

AÑO: 2015

LUGAR	ESTACION				CLASIFICACION VEHICULAR EN PORCIENTO										COORDENADAS					
	KM	TE	SC	TDPA	M	A	B	C2	C3	T3S2	T3S3	T3S2R4	OTROS	A	B	C	K'	D	LATITUD	LONGITUD
T. C. Amozoc - Perote (Cuota)	0.00	3	0	2961	0.5	78.3	6.8	9.0	2.1	1.9	0.5	0.8	0.1	78.8	6.8	14.4	0.102	0.515	19.429394	-97.636046
Ent. Cuyoaco	19.00	3	0	5035	0.3	80.8	4.8	8.2	2.1	2.1	1.0	0.4	0.3	81.1	4.8	14.1	0.086	0.504	19.597534	-97.611837
T. Izq. Zaragoza	40.00	1	0	5050	0.6	81.2	4.7	7.9	1.8	2.2	1.1	0.3	0.2	81.8	4.7	13.5	0.086	0.512	19.753180	-97.549405
T. Izq. Zaragoza	40.00	3	0	4552	0.6	83.0	3.1	8.3	1.6	2.1	0.8	0.3	0.2	83.6	3.1	13.3	0.082	0.505	19.762457	-97.544667
Teziutlán	62.00	1	0	4314	1.1	79.2	3.7	11.6	1.3	2.1	0.4	0.2	0.4	80.3	3.7	16.0	0.074	0.509	19.825570	-97.380002
Teziutlán	88.00																			

PUEBLA

46 CARR: Puebla - Atlixco (Cuota)

CLAVE: 21585

RUTA: PUE-D

AÑO: 2015

LUGAR	ESTACION				CLASIFICACION VEHICULAR EN PORCIENTO										COORDENADAS					
	KM	TE	SC	TDPA	M	A	B	C2	C3	T3S2	T3S3	T3S2R4	OTROS	A	B	C	K'	D	LATITUD	LONGITUD
Puebla	0.00	3	1	13905	0.9	90.2	2.1	3.7	0.8	0.8	0.5	0.8	0.2	91.1	2.1	6.8	0.108	0.506	19.003649	-98.273023
Puebla	0.00	3	2	14270	0.3	89.7	2.4	4.2	0.9	0.9	0.5	0.9	0.2	90.0	2.4	7.6	0.071	0.506	19.003623	-98.273005
Atlixco	25.30	1	1	7530	0.9	90.7	1.8	4.5	0.5	0.7	0.5	0.3	0.1	91.6	1.8	6.6	0.089	0.512	18.923419	-98.402793
Atlixco	25.30	1	2	7893	0.9	90.0	2.0	5.0	0.5	0.7	0.5	0.3	0.1	90.9	2.0	7.1	0.101	0.512	18.923420	-98.402789

47 CARR: Tlaxco - Tejocotal (Cuota)

CLAVE: 00209

RUTA: PUE-D

AÑO: 2015

LUGAR	ESTACION				CLASIFICACION VEHICULAR EN PORCIENTO										COORDENADAS					
	KM	TE	SC	TDPA	M	A	B	C2	C3	T3S2	T3S3	T3S2R4	OTROS	A	B	C	K'	D	LATITUD	LONGITUD
T. C. Apan - Tlaxco	0.00	3	0	3267	0.6	76.7	7.3	8.6	1.5	2.4	1.3	1.3	0.3	77.3	7.3	15.4	0.065	0.503	19.607549	-98.156569
T. C. Tejocotal - Tihuatlán (Cuota)	72.00																			

48 CARR: Ramal a Tulcingo del Valle

CLAVE: 21578

RUTA: PUE-MEX-093

AÑO: 2015

LUGAR	ESTACION				CLASIFICACION VEHICULAR EN PORCIENTO										COORDENADAS					
	KM	TE	SC	TDPA	M	A	B	C2	C3	T3S2	T3S3	T3S2R4	OTROS	A	B	C	K'	D	LATITUD	LONGITUD
T. C. Puebla - Huajuapán de León	0.00	3	0	2888	1.7	80.9	2.1	8.0	2.0	3.3	1.3	0.3	0.4	82.6	2.1	15.3	0.082	0.502	18.247941	-98.220573
T. Izq. Piaxtla	7.31	3	0	2550	2.1	79.0	2.8	8.1	2.0	3.5	1.6	0.5	0.4	81.1	2.8	16.1	0.083	0.501	18.187124	-98.270493
Tecomatlán	21.01	3	0	2890	2.5	79.3	2.5	8.1	1.8	3.1	1.7	0.6	0.4	81.8	2.5	15.7	0.071	0.506	18.095740	-98.315390
Tulcingo del Valle	43.00	1	0	3040	2.9	81.1	1.5	7.0	1.4	4.0	1.2	0.3	0.6	84.0	1.5	14.5	0.093	0.504	18.042510	-98.425495

49 CARR: Tehuacán - Huitzo

CLAVE: 00211

RUTA: PUE-MEX-135

AÑO: 2015

LUGAR	ESTACION				CLASIFICACION VEHICULAR EN PORCIENTO										COORDENADAS					
	KM	TE	SC	TDPA	M	A	B	C2	C3	T3S2	T3S3	T3S2R4	OTROS	A	B	C	K'	D	LATITUD	LONGITUD
Tehuacán	0.00	3	0	8802	5.2	83.3	0.1	4.5	0.8	4.6	0.5	0.2	0.8	88.5	0.1	11.4	0.073	0.529	18.450595	-97.370778
T. Der. San Gabriel Chilac	14.40	1	0	7339	7.0	78.3	0.1	7.2	0.7	4.5	1.0	0.3	0.9	85.3	0.1	14.6	0.065	0.522	18.404516	-97.329802
San Sebastián Zinacatepec	23.00	3	0	5529	8.0	77.2	1.0	8.1	2.0	2.3	0.5	0.4	0.5	85.2	1.0	13.8	0.062	0.510	18.325904	-97.230320
Lim. Edos. Term. Pue. Ppia. Oax.	60.90																			
Teotitlán del Camino	63.15	3	0	2516	6.1	86.5	0.4	4.9	0.4	1.4	0.1	0.1	0.1	92.6	0.4	7.0	0.076	0.502	18.121370	-97.073918
Santa María Tecomavaca	88.34	1	0	1398	3.8	88.0	0.6	5.2	0.8	1.0	0.2	0.2	0.2	91.8	0.6	7.6	0.097	0.506	17.960071	-97.028859
Santa María Tecomavaca	88.34	3	0	1051	3.9	84.0	0.7	8.0	1.9	1.1	0.3	0.1	0.0	87.9	0.7	11.4	0.077	0.509	17.949515	-97.022336
T. Izq. Cuicatlán	118.80	1	0	1158	8.7	80.7	0.9	7.6	0.7	1.1	0.2	0.0	0.1	89.4	0.9	9.7	0.098	0.502	17.794054	-96.960145
T. Izq. Nacaltepec	169.84	1	0	663	1.4	84.3	0.9	9.6	2.4	0.9	0.5	0.0	0.0	85.7	0.9	13.4	0.071	0.507	17.505776	-96.932976
T. C. Huajuapán de León - Oaxaca	202.70	1	0	7119	5.2	85.1	0.2	3.6	0.2	4.5	0.5	0.1	0.6	90.3	0.2	9.5	0.062	0.506	17.286772	-96.903499

PUEBLA

50 CARR : Teotitlán de Flores Magón - Tuxtepec

CLAVE: 00108

RUTA: OAX-PUE-MEX-182

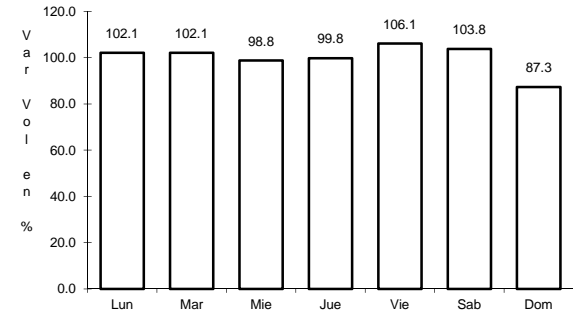
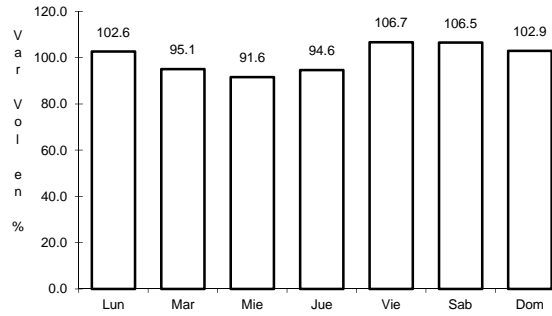
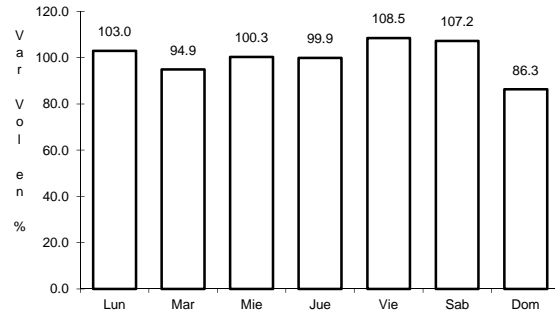
AÑO: 2015

LUGAR	ESTACION				CLASIFICACION VEHICULAR EN PORCIENTO														COORDENADAS	
	KM	TE	SC	TDPA	M	A	B	C2	C3	T3S2	T3S3	T3S2R4	OTROS	A	B	C	K'	D	LATITUD	LONGITUD
Teotitlán del Camino	0.00	3	0	1018	2.1	80.7	3.5	8.9	2.6	1.3	0.7	0.0	0.2	82.8	3.5	13.7	0.074	0.501	18.138850	-97.062915
Lim. Edos. Term. Oax. Ppia. Pue.	2.00																			
Lim. Edos. Term. Pue. Ppia. Oax.	10.00																			
Huautla	65.00	1	0	1717	1.8	84.5	1.2	9.7	1.0	1.1	0.5	0.0	0.2	86.3	1.2	12.5	0.077	0.549	18.125591	-96.846127
San Felipe Jalapa de Díaz	140.00	3	0	4081	10.7	80.0	0.3	5.5	0.4	2.4	0.4	0.1	0.2	90.7	0.3	9.0	0.071	0.503	18.081976	-96.522351
Tuxtepec	185.00	1	0	8795	16.6	68.9	0.4	7.7	0.6	4.2	0.5	0.3	0.8	85.5	0.4	14.1	0.060	0.501	18.089511	-96.170377

1 CARR: Amozoc - Teziutlán

CLAVE: 00210

RUTA: MEX-129



Km: 1.40 Tipo: 3 Sent: 0

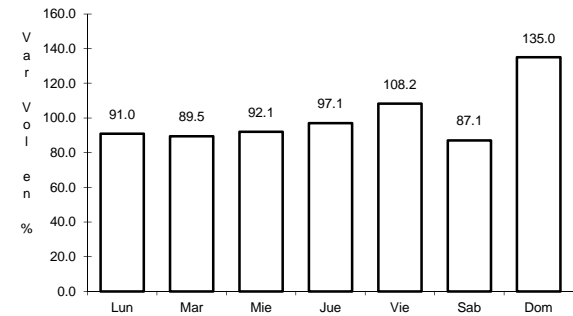
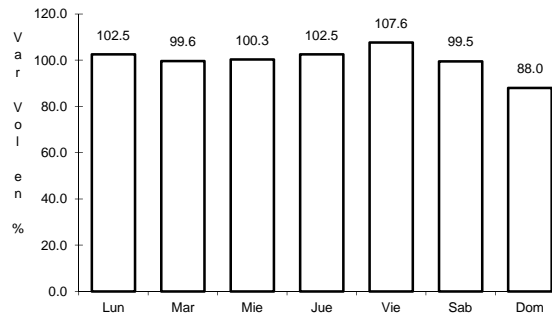
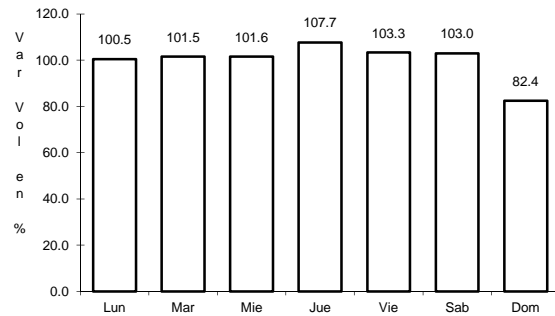
Km: 76.35 Tipo: 3 Sent: 0

Km: 157.80 Tipo: 1 Sent: 0

2 CARR: Apizaco - Tejocotal

CLAVE: 00430

RUTA: MEX-119



Km: 0.00 Tipo: 3 Sent: 1

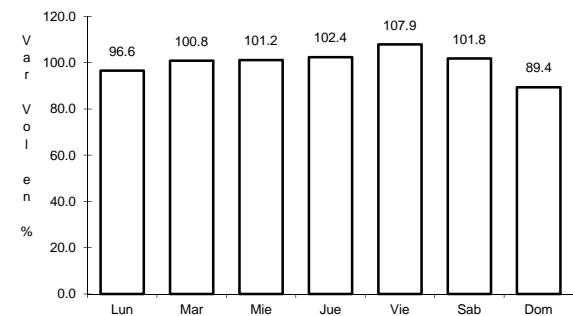
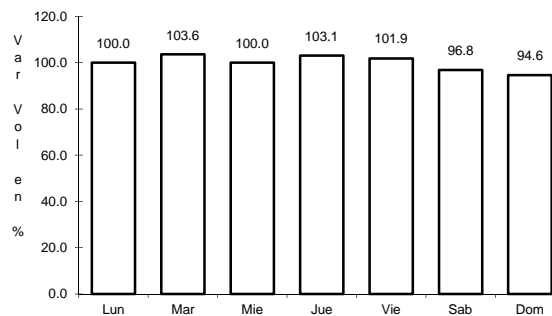
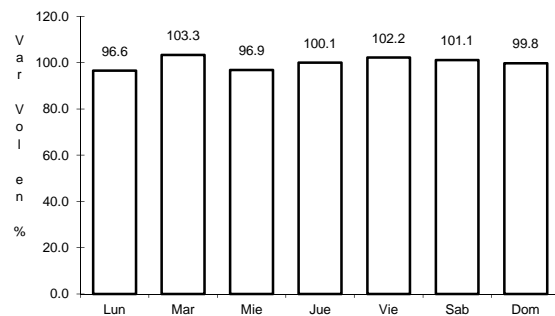
Km: 0.00 Tipo: 3 Sent: 2

Km: 113.15 Tipo: 1 Sent: 0

3 CARR: Los Reyes - Zacatepec

CLAVE: 00052

RUTA: MEX-136



Km: 3.35 Tipo: 3 Sent: 1

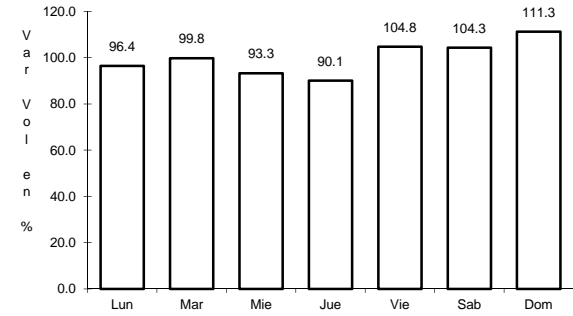
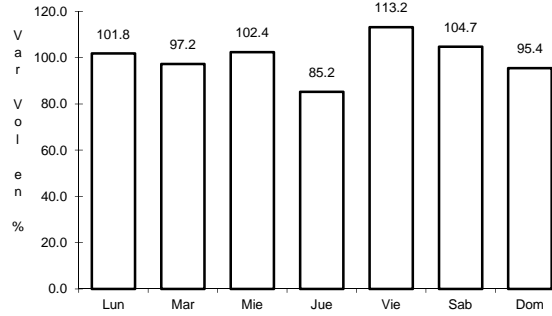
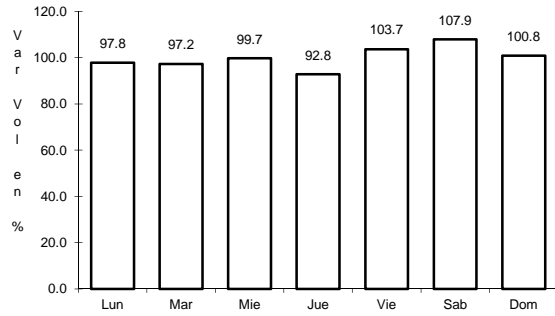
Km: 3.35 Tipo: 3 Sent: 2

Km: 187.67 Tipo: 1 Sent: 0

4 CARR: México - Puebla (Libre)

CLAVE: 00449

RUTA: MEX-150



Km: 28.85

Tipo: 1

Sent: 1

Km: 28.85

Tipo: 1

Sent: 2

Km: 62.06

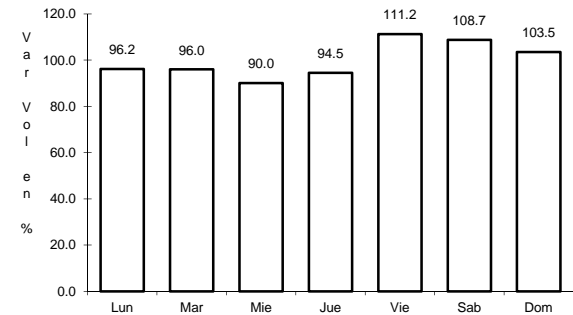
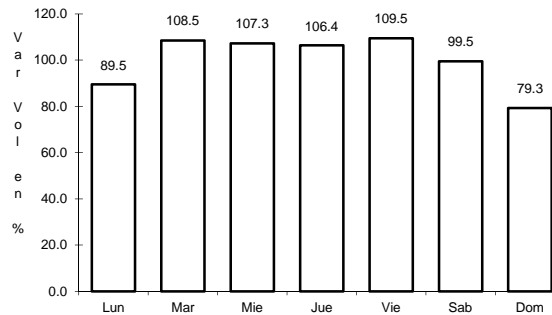
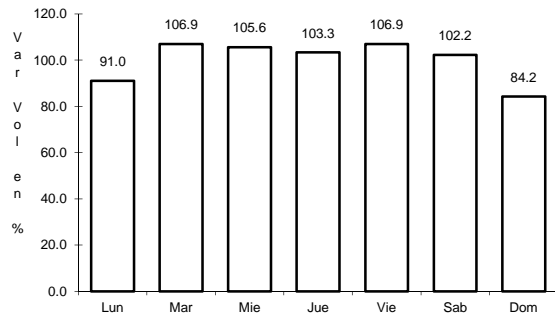
Tipo: 1

Sent: 0

5 CARR: Pachuca - Tuxpam

CLAVE: 00608

RUTA: MEX-130



Km: 2.60

Tipo: 3

Sent: 1

Km: 2.60

Tipo: 3

Sent: 2

Km: 141.75

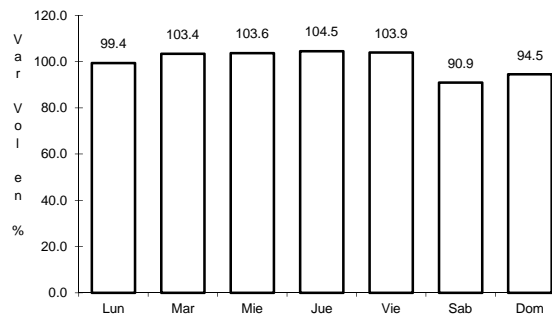
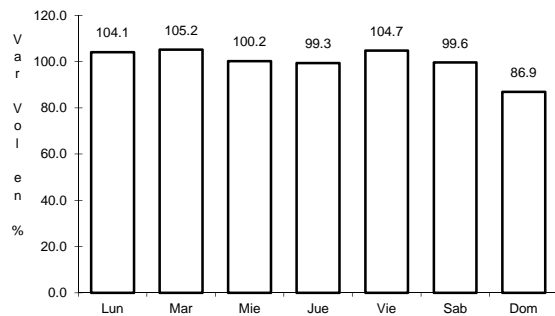
Tipo: 1

Sent: 0

6 CARR: Puebla - Belem

CLAVE: 00055

RUTA: MEX-121



Km: 4.00

Tipo: 3

Sent: 1

Km: 4.00

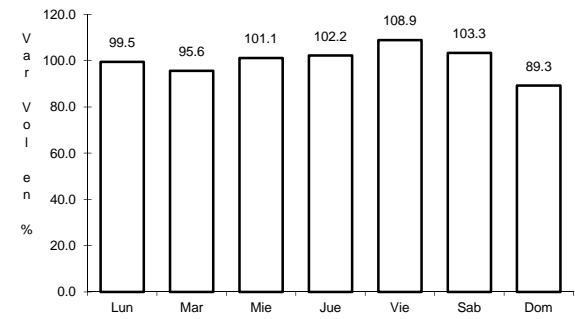
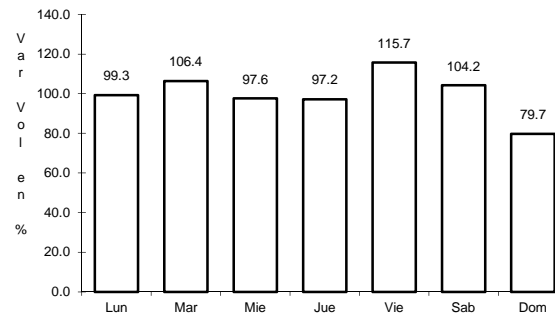
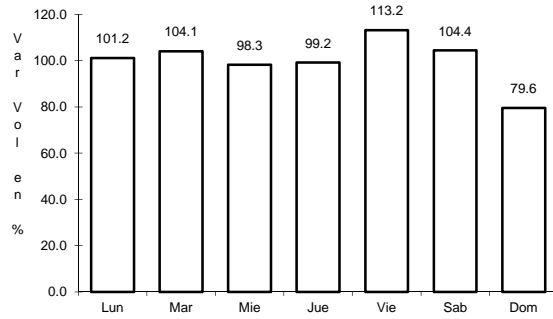
Tipo: 3

Sent: 2

7 CARR: Puebla - Huajuapán de León

CLAVE: 00049

RUTA: MEX-190



Km: 0.00 Tipo: 3 Sent: 1

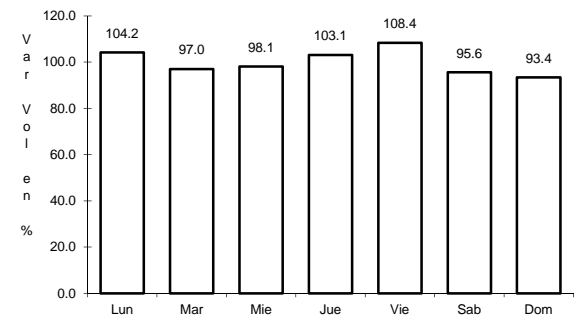
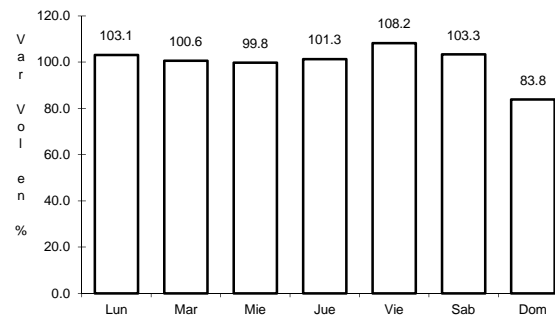
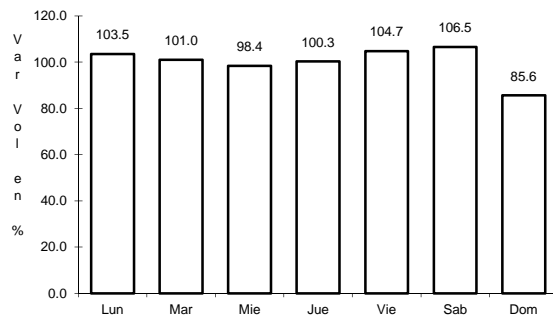
Km: 0.00 Tipo: 3 Sent: 2

Km: 219.30 Tipo: 1 Sent: 0

8 CARR: Puebla - Tehuacán

CLAVE: 21047

RUTA: MEX-150



Km: 5.83 Tipo: 3 Sent: 1

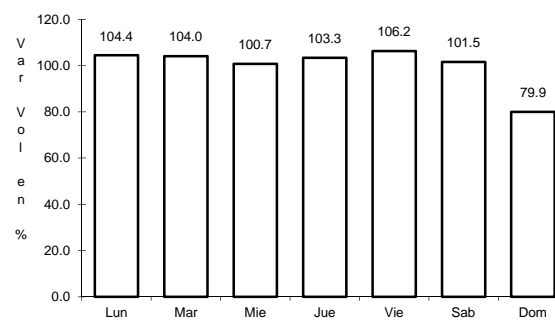
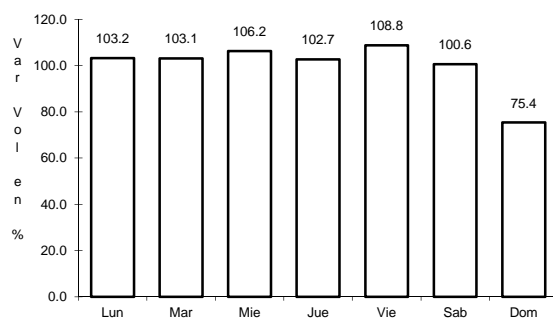
Km: 5.83 Tipo: 3 Sent: 2

Km: 57.40 Tipo: 1 Sent: 0

9 CARR: Puebla - Tlaxcala

CLAVE: 00475

RUTA: MEX-119



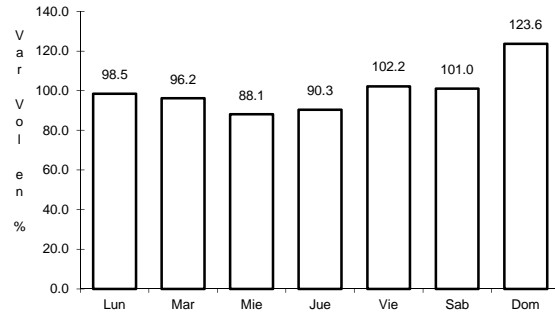
Km: 5.41 Tipo: 3 Sent: 1

Km: 5.41 Tipo: 3 Sent: 2

10 CARR: Ramal a Nuevo Necaxa

CLAVE: 21592

RUTA: MEX-130



Km: 1.50

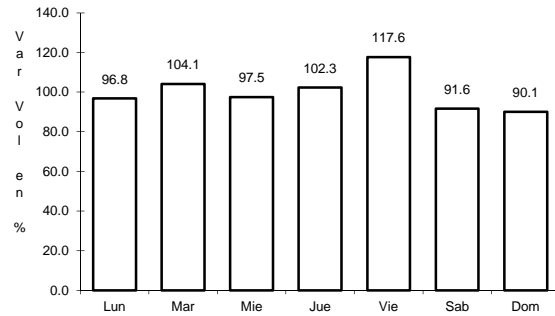
Tipo: 1

Sent: 0

11 CARR: San Hipólito - Xalapa

CLAVE: 00486

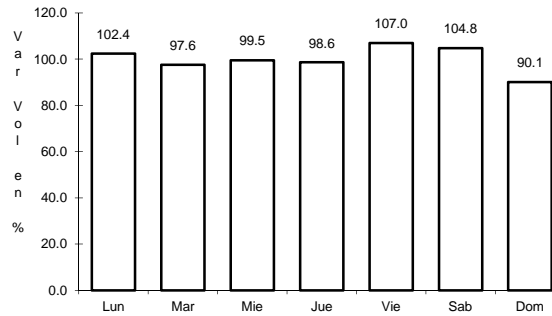
RUTA: MEX-140



Km: 0.00

Tipo: 3

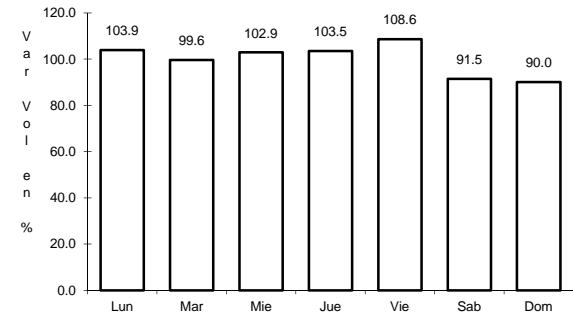
Sent: 1



Km: 151.20

Tipo: 1

Sent: 1



Km: 151.20

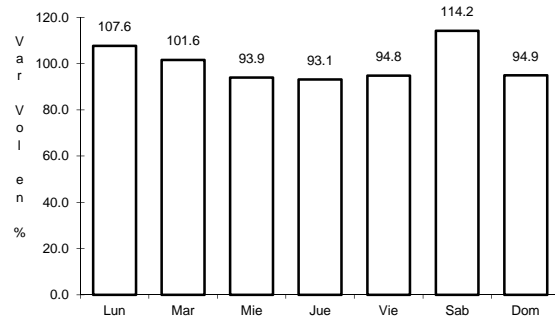
Tipo: 1

Sent: 2

12 CARR: San Martín Texmelucan - Tlaxcala

CLAVE: 00158

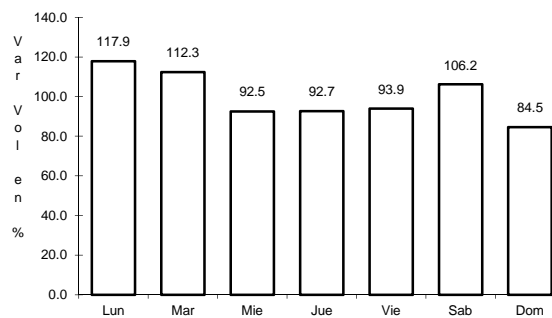
RUTA: MEX-117



Km: 0.00

Tipo: 3

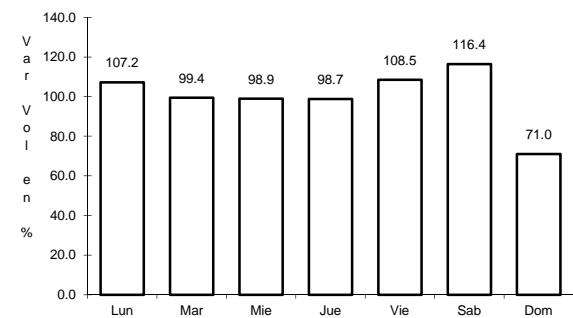
Sent: 1



Km: 0.00

Tipo: 3

Sent: 2



Km: 24.81

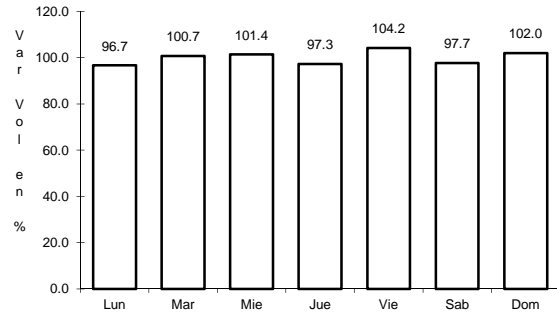
Tipo: 1

Sent: 0

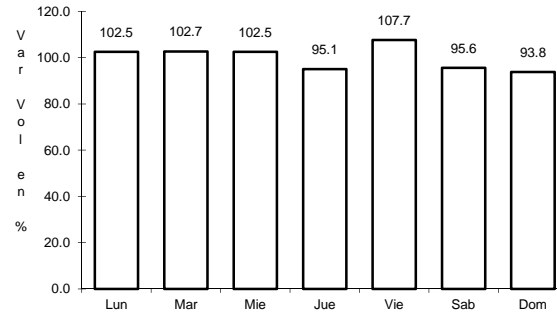
13 CARR: San Salvador El Seco - Azumbilla

CLAVE: 21004

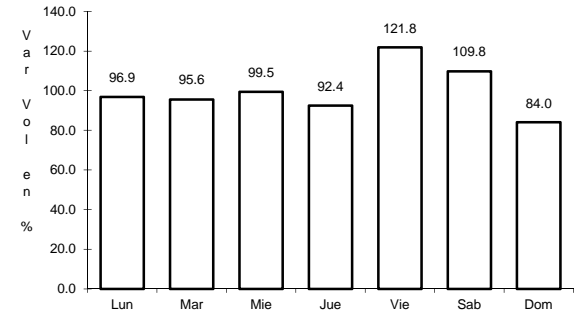
RUTA: MEX-144



Km: 0.00 Tipo: 3 Sent: 0



Km: 45.94 Tipo: 3 Sent: 0

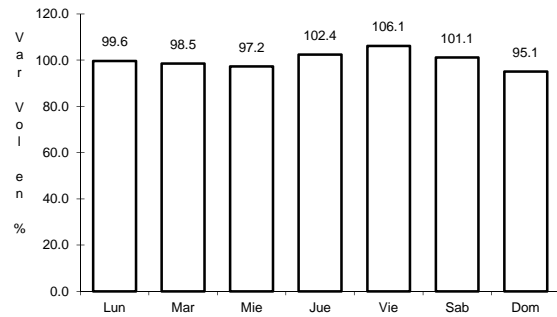


Km: 73.67 Tipo: 1 Sent: 0

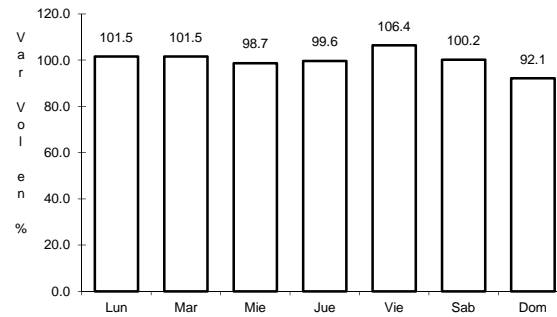
14 CARR: Santa Bárbara - Izúcar de Matamoros

CLAVE: 00451

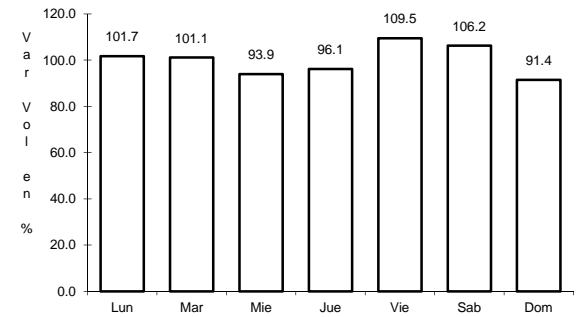
RUTA: MEX-115-160



Km: 0.00 Tipo: 3 Sent: 1



Km: 0.00 Tipo: 3 Sent: 2

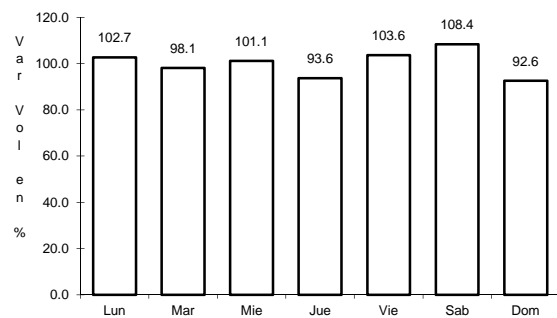


Km: 38.81 Tipo: 3 Sent: 0

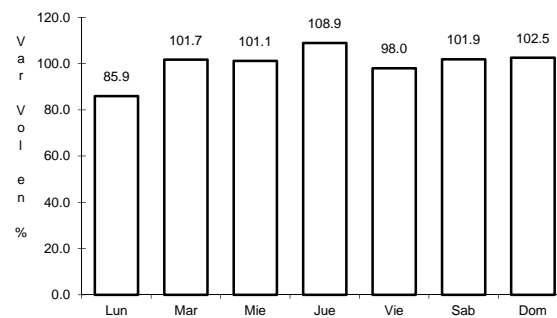
15 CARR: Tehuacán - Córdoba

CLAVE: 00534

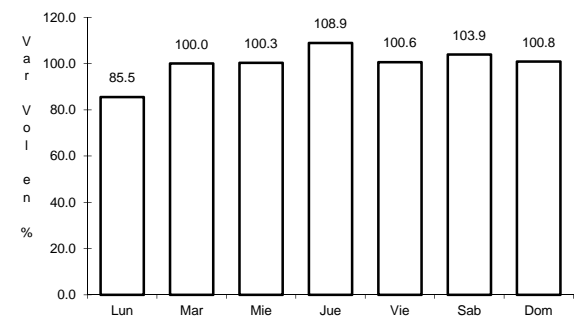
RUTA: MEX-150



Km: 0.00 Tipo: 3 Sent: 0



Km: 86.76 Tipo: 1 Sent: 1

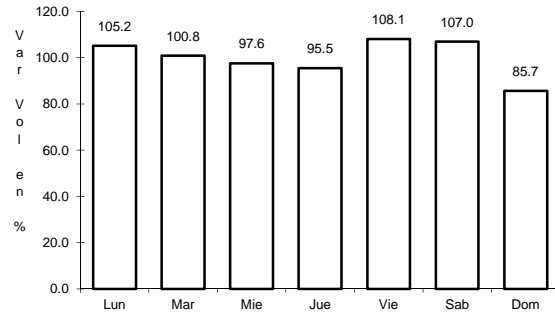


Km: 86.76 Tipo: 1 Sent: 2

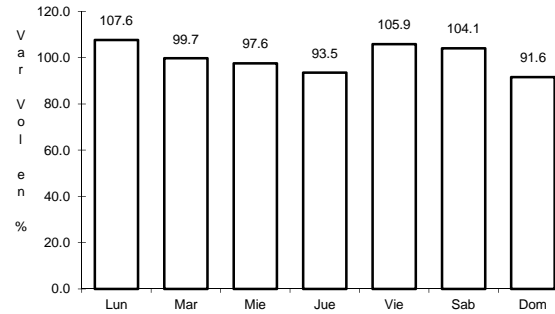
16 CARR: Tehuacán - Huajuapán de León

CLAVE: 00211

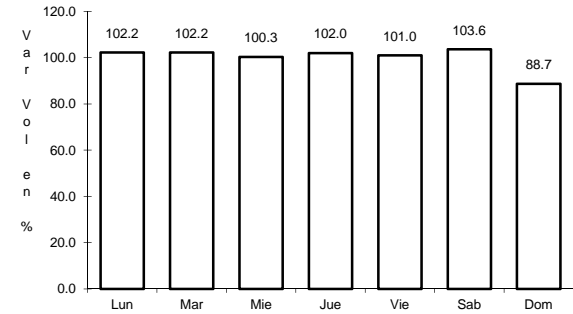
RUTA: MEX-125



Km: 0.00 Tipo: 3 Sent: 1



Km: 0.00 Tipo: 3 Sent: 2

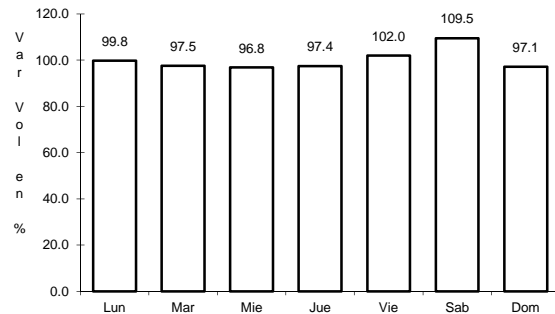


Km: 119.40 Tipo: 1 Sent: 0

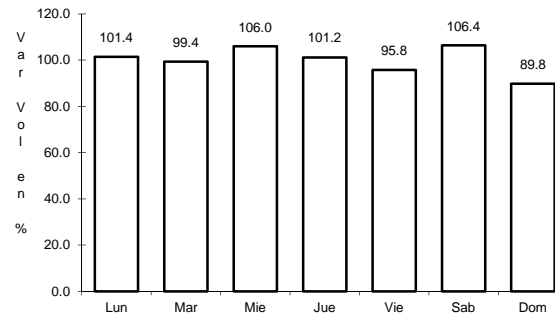
17 CARR: Teziutlán - Nautla

CLAVE: 00144

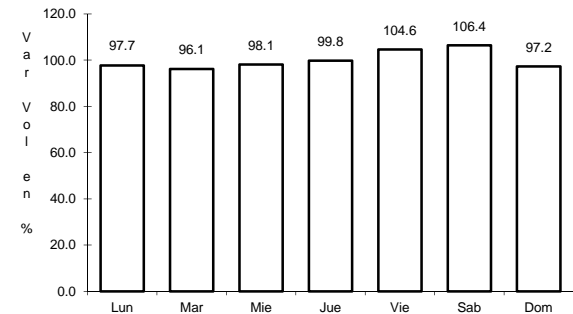
RUTA: MEX-129



Km: 0.00 Tipo: 3 Sent: 0



Km: 58.00 Tipo: 3 Sent: 0

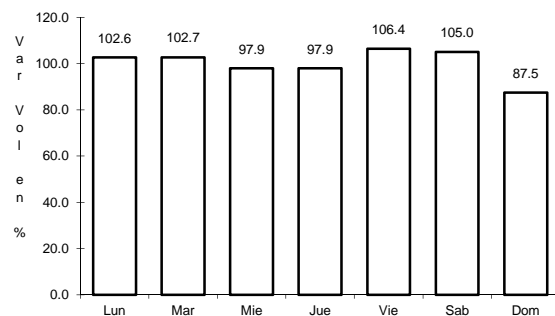


Km: 93.20 Tipo: 1 Sent: 0

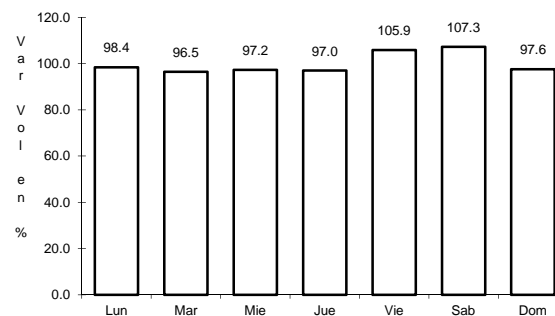
18 CARR: Teziutlán - Perote

CLAVE: 00209

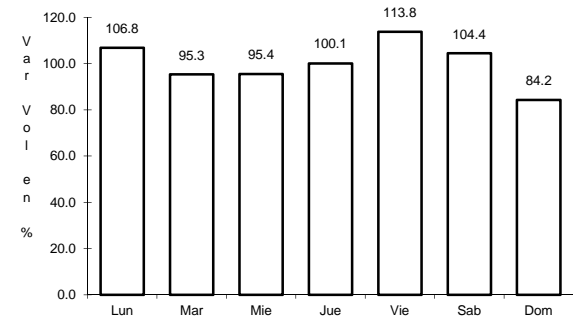
RUTA: MEX-131



Km: 0.00 Tipo: 3 Sent: 0



Km: 26.90 Tipo: 3 Sent: 0

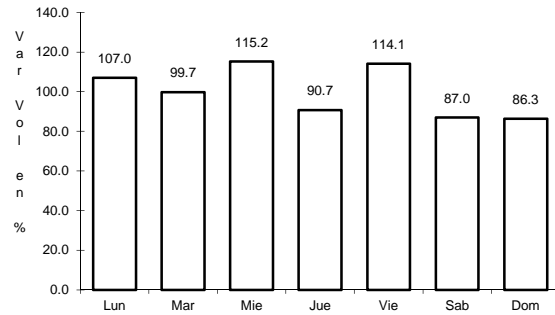


Km: 49.10 Tipo: 1 Sent: 0

19 CARR: Zacatepec - Oriental

CLAVE: 21189

RUTA: MEX-136



Km: 0.00

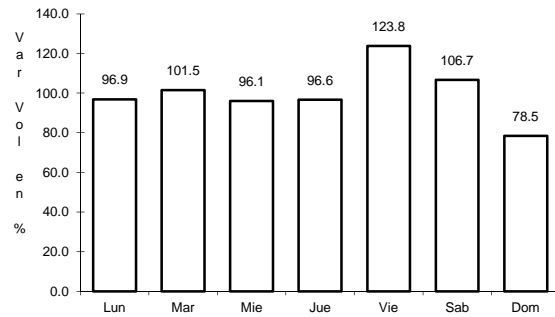
Tipo: 3

Sent: 0

20 CARR: Acatzingo - Cd. Mendoza (Cuota)

CLAVE: 00485

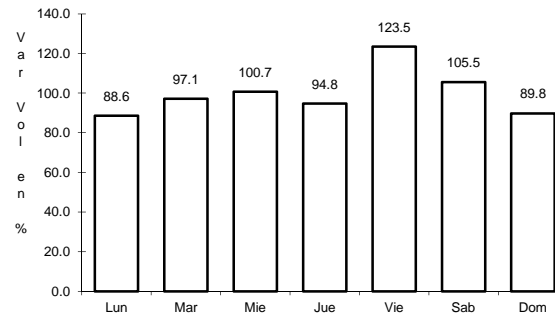
RUTA: MEX-150D



Km: 47.10

Tipo: 3

Sent: 1



Km: 47.10

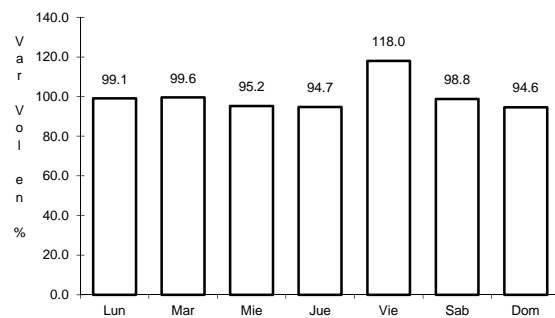
Tipo: 3

Sent: 2

21 CARR: Amozoc - Perote (Cuota)

CLAVE: 00030

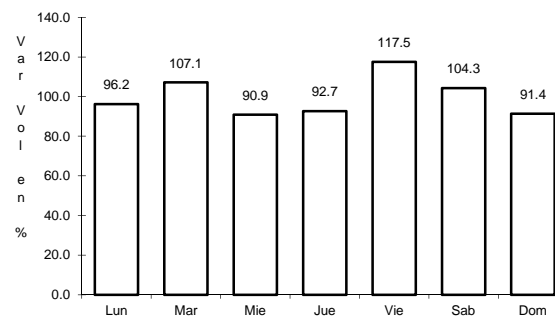
RUTA: MEX-140D



Km: 0.00

Tipo: 3

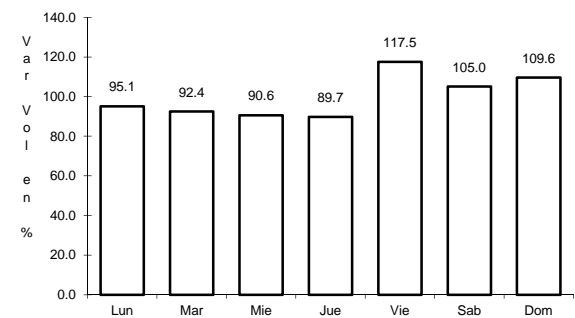
Sent: 0



Km: 25.80

Tipo: 3

Sent: 0



Km: 62.70

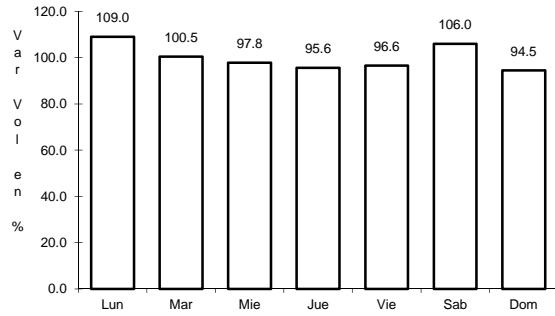
Tipo: 3

Sent: 0

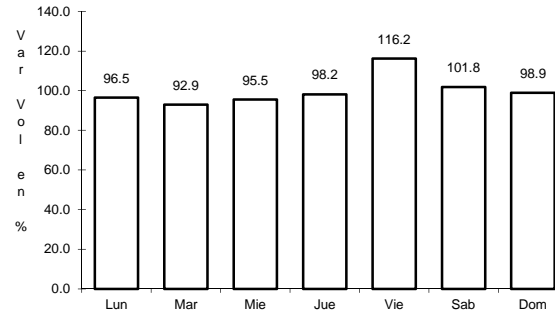
22 CARR: Cuacnopalan - Oaxaca (Cuota)

CLAVE: 00109

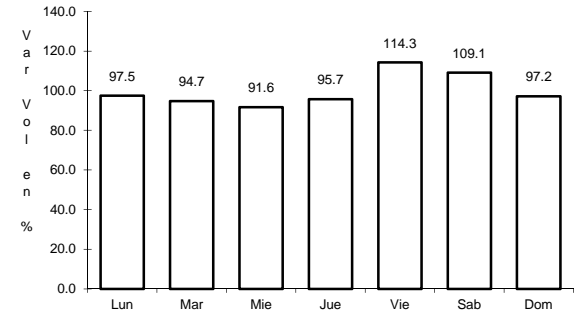
RUTA: MEX-135D



Km: 0.00 Tipo: 3 Sent: 0



Km: 242.70 Tipo: 1 Sent: 1

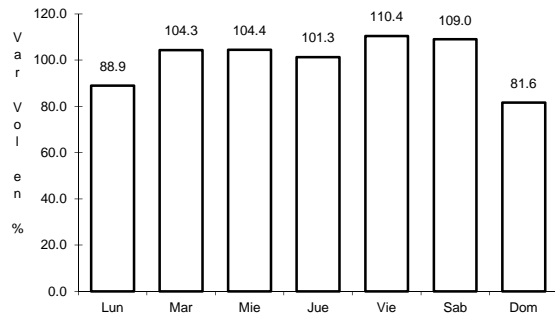


Km: 242.70 Tipo: 1 Sent: 2

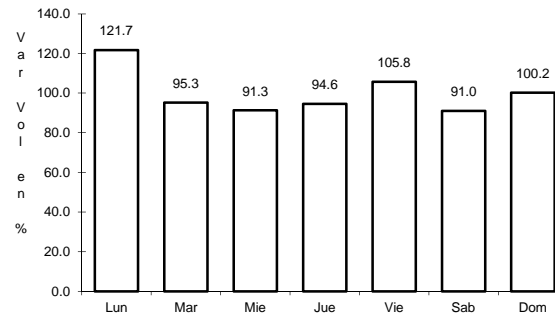
23 CARR: Ent. Tulancingo - Venta Grande (Cuota)

CLAVE: 00026

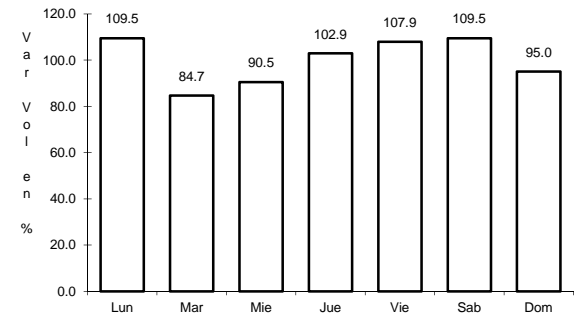
RUTA: MEX-132D



Km: 7.80 Tipo: 1 Sent: 0



Km: 21.80 Tipo: 1 Sent: 0

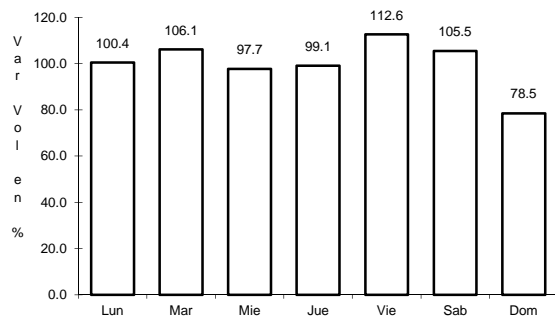


Km: 39.60 Tipo: 1 Sent: 0

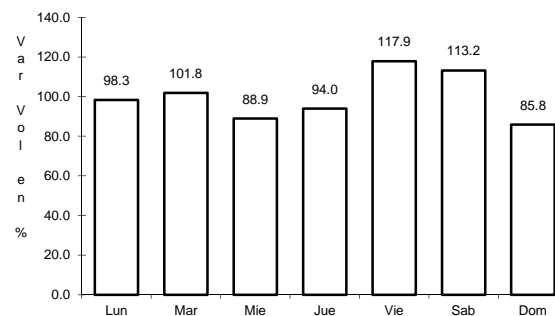
24 CARR: Libramiento de San Martín Texmelucan

CLAVE: 21014

RUTA: MEX-057D



Km: 135.90 Tipo: 1 Sent: 1

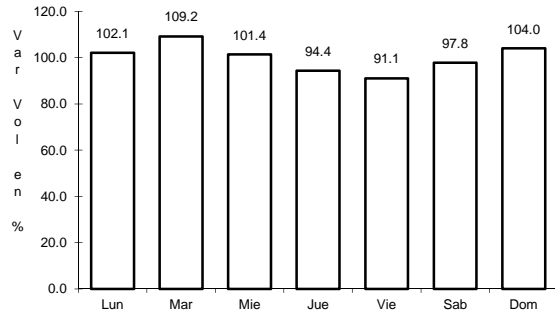


Km: 135.90 Tipo: 1 Sent: 2

25 CARR: México - Puebla (Cuota)

CLAVE: 00450

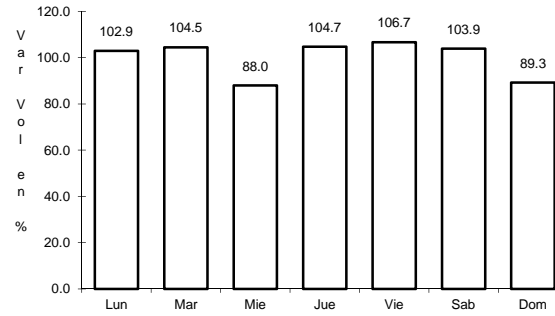
RUTA: MEX-150D



Km: 17.00

Tipo: 3

Sent: 1



Km: 17.00

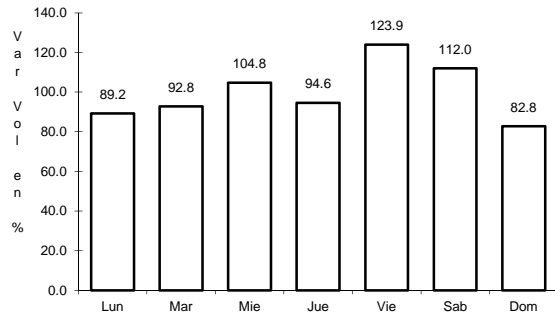
Tipo: 3

Sent: 2

26 CARR: Puebla - Acatzingo (Cuota)

CLAVE: 00485

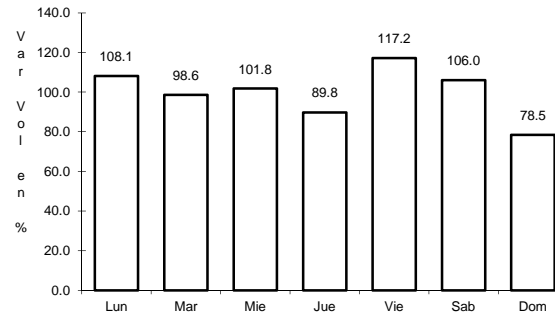
RUTA: MEX-150D



Km: 2.56

Tipo: 3

Sent: 1



Km: 2.56

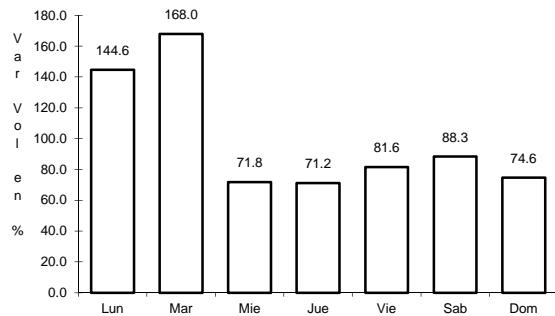
Tipo: 3

Sent: 2

27 CARR: San Martin Texmelucan - Tlaxcala - El Molinito (Cuota)

CLAVE: 00212

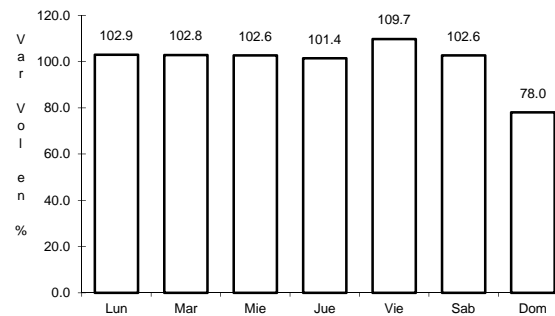
RUTA: MEX-117D



Km: 1.80

Tipo: 1

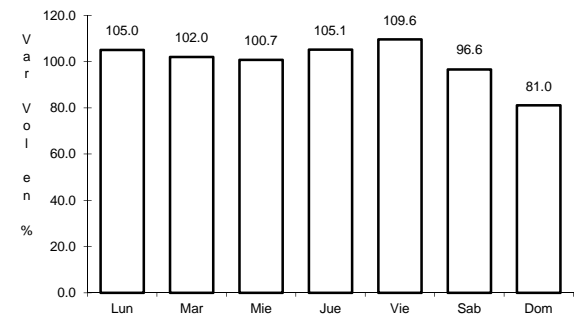
Sent: 0



Km: 35.20

Tipo: 1

Sent: 1



Km: 35.20

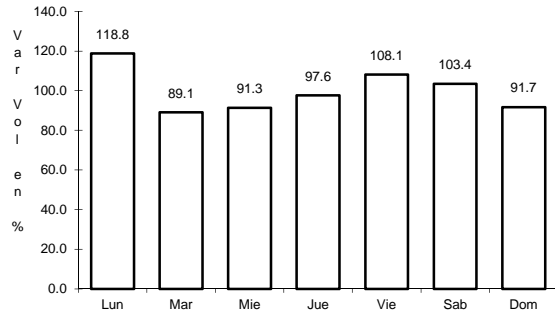
Tipo: 1

Sent: 2

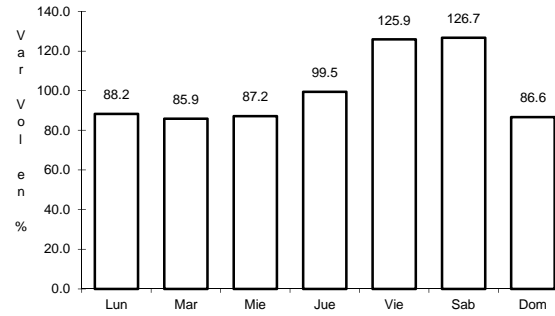
28 CARR: Tejocotal - Nuevo Necaxa (Cuota)

CLAVE: 00211

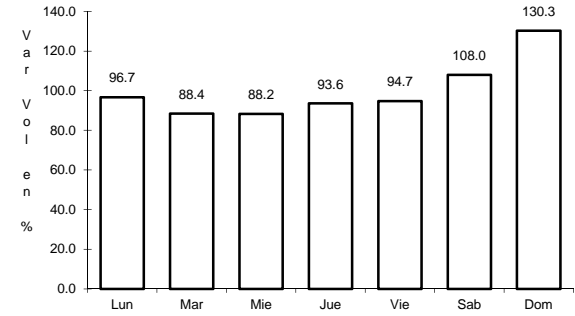
RUTA: MEX-132D



Km: 0.00 Tipo: 3 Sent: 0



Km: 17.00 Tipo: 1 Sent: 1

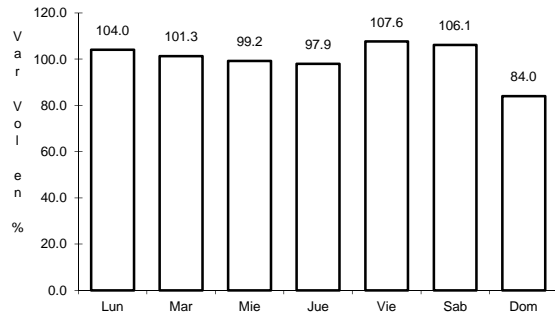


Km: 17.00 Tipo: 1 Sent: 2

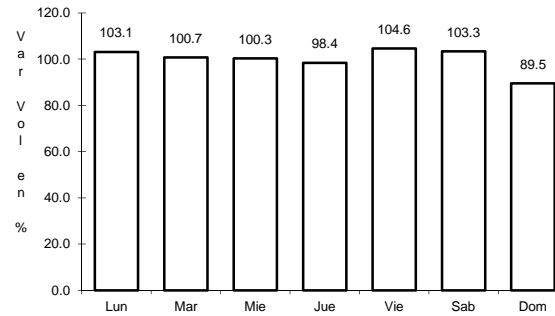
29 CARR: Amayuca - Izúcar de Matamoros

CLAVE: 00030

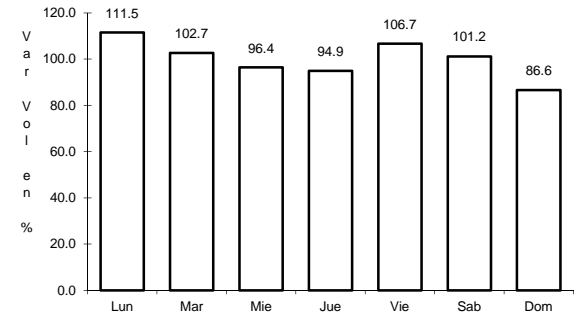
RUTA: MOR-031-PUE



Km: 0.66 Tipo: 3 Sent: 1



Km: 0.66 Tipo: 3 Sent: 2

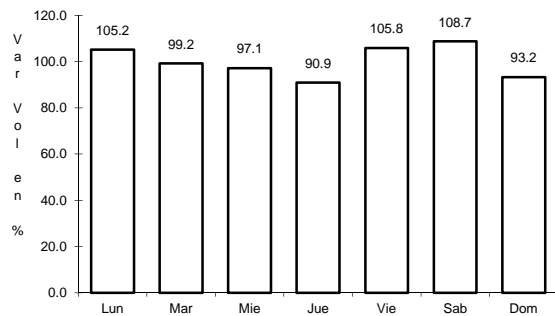


Km: 38.40 Tipo: 3 Sent: 0

30 CARR: Azumbilla - Alcomunga

CLAVE: 21001

RUTA: PUE

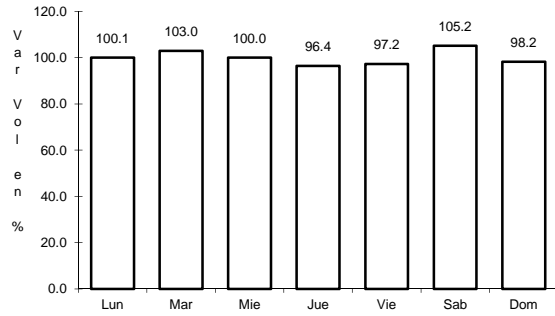


Km: 0.00 Tipo: 3 Sent: 0

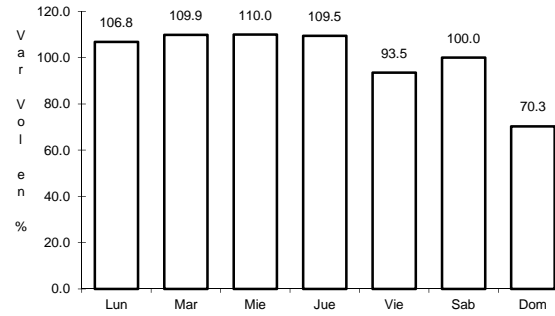
31 CARR: Cholula - Puebla (Vía Quetzalcóatl)

CLAVE: 21203

RUTA: PUE



Km: 0.00 Tipo: 3 Sent: 1

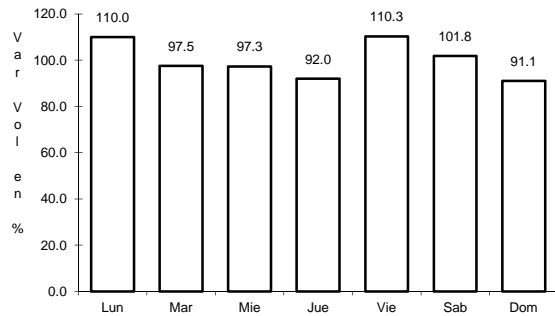


Km: 0.00 Tipo: 3 Sent: 2

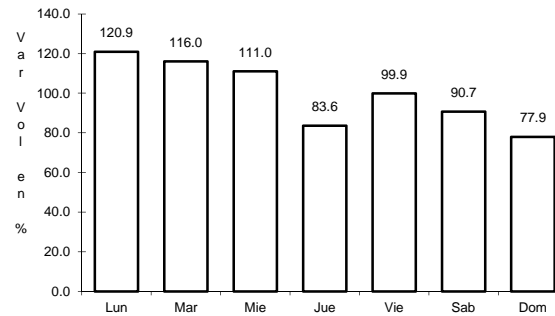
32 CARR: Cuacnopalan - Santa Catarina Los Reyes

CLAVE: 00109

RUTA: PUE



Km: 0.00 Tipo: 3 Sent: 0

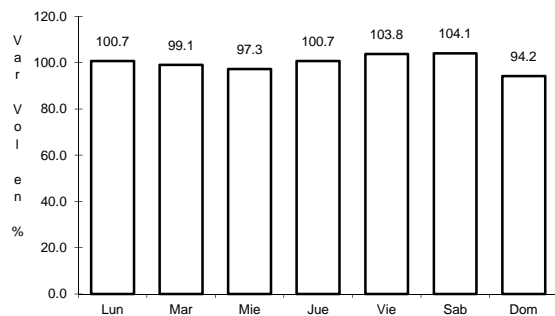


Km: 13.00 Tipo: 1 Sent: 0

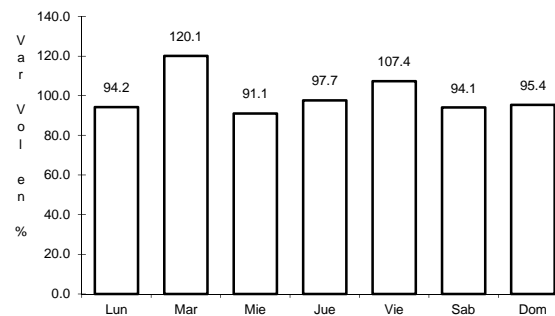
33 CARR: Cuapiaxtla - Acatlán de Osorio

CLAVE: 21014

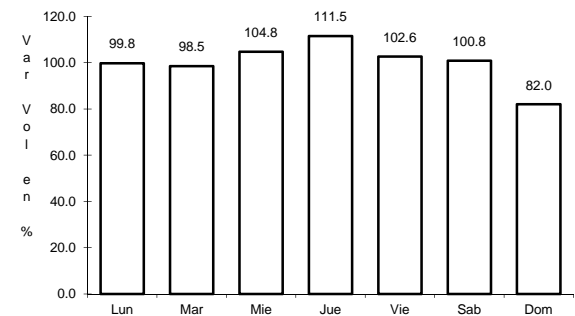
RUTA: PUE



Km: 0.00 Tipo: 3 Sent: 0



Km: 63.35 Tipo: 1 Sent: 0

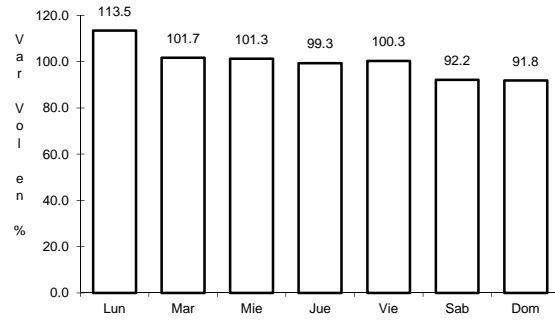


Km: 127.00 Tipo: 1 Sent: 0

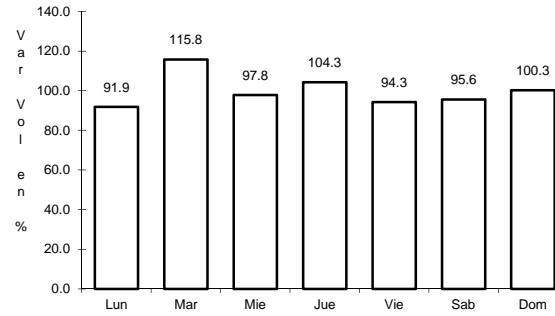
34 CARR: Izúcar de Matamoros - Tepexi de Rodríguez

CLAVE: 21014

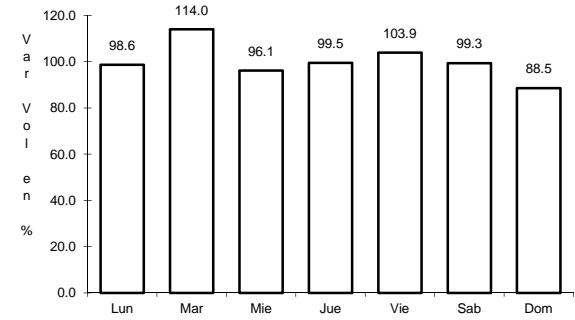
RUTA: PUE



Km: 0.00 Tipo: 3 Sent: 0



Km: 46.00 Tipo: 1 Sent: 0

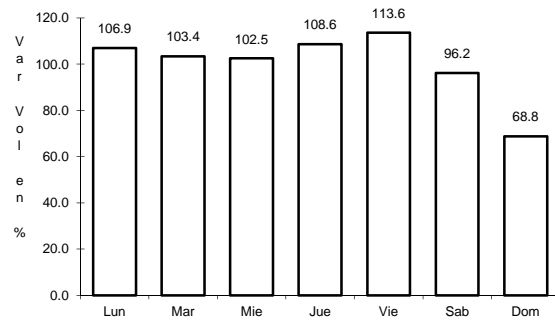


Km: 62.00 Tipo: 1 Sent: 0

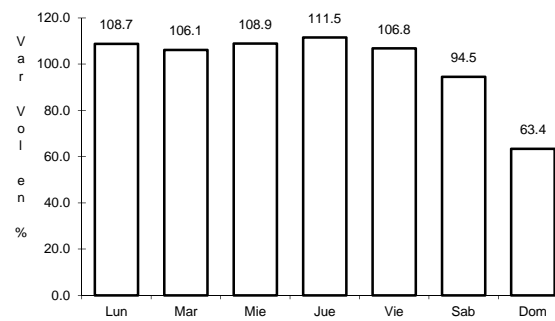
35 CARR: Ramal a Aeropuerto Hnos. Serdán

CLAVE: 21591

RUTA: PUE



Km: 0.00 Tipo: 3 Sent: 0

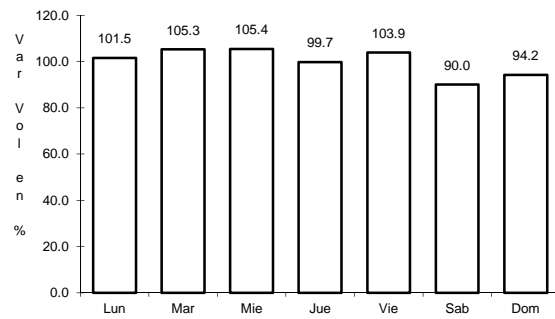


Km: 9.00 Tipo: 1 Sent: 0

36 CARR: Ramal a Jolalpan

CLAVE: 00143

RUTA: MOR-PUE

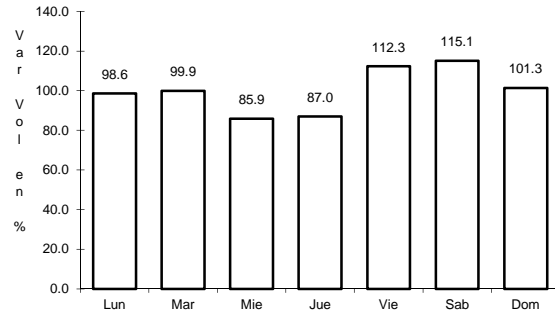


Km: 0.00 Tipo: 3 Sent: 0

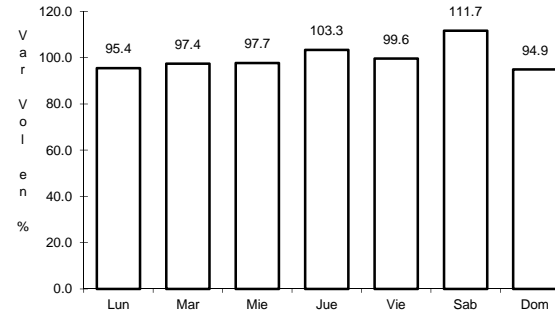
37 CARR: Ramal a Tetela de Ocampo

CLAVE: 21587

RUTA: PUE



Km: 0.00 Tipo: 3 Sent: 0

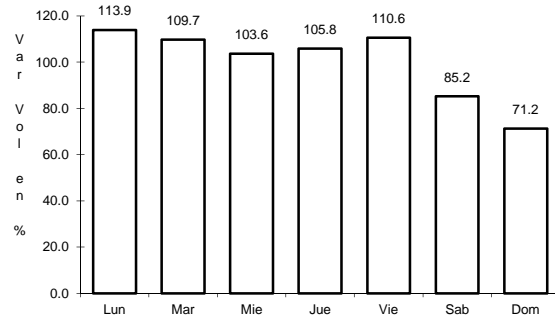


Km: 45.00 Tipo: 1 Sent: 0

38 CARR: Ramal a Zihuateutla

CLAVE: 21590

RUTA: PUE

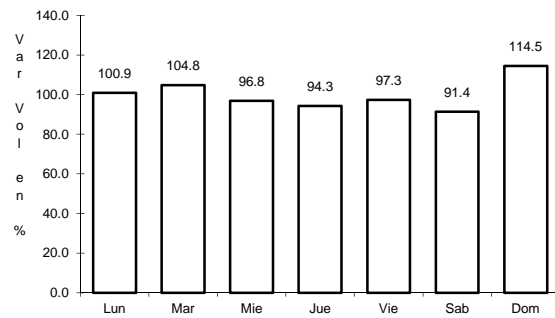


Km: 0.00 Tipo: 3 Sent: 0

39 CARR: Ramal a Zoquitlán

CLAVE: 21003

RUTA: PUE

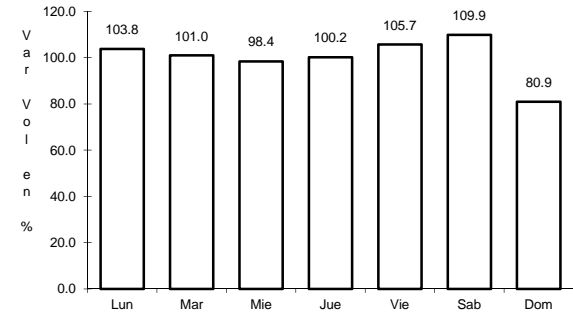
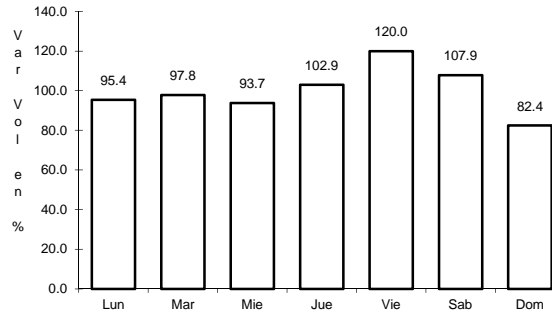
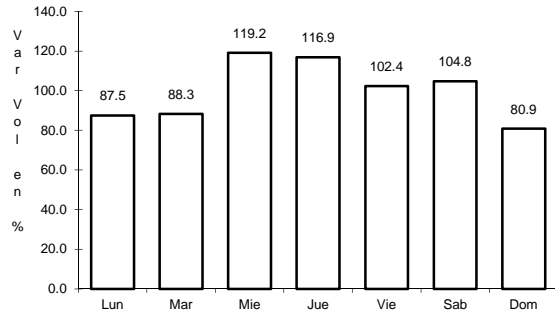


Km: 0.00 Tipo: 3 Sent: 0

40 CARR: San Juan Ixcaquixtla - Pino Suárez

CLAVE: 00486

RUTA: PUE



Km: 0.00 Tipo: 3 Sent: 0

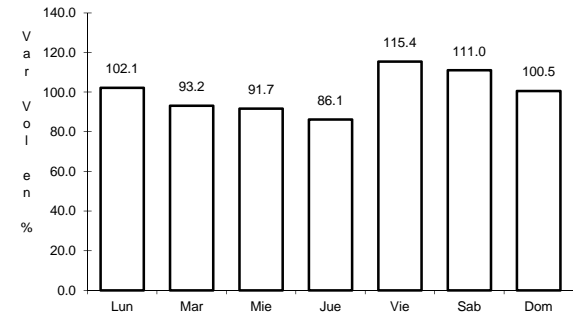
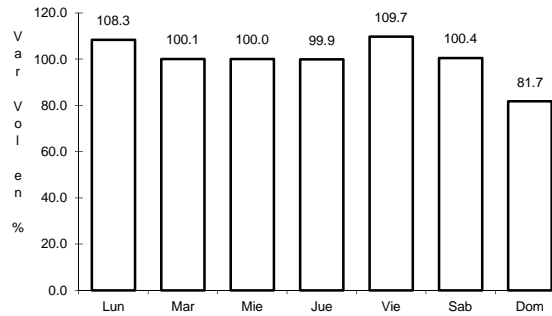
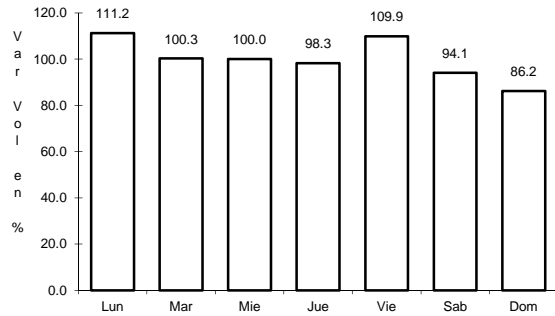
Km: 42.80 Tipo: 1 Sent: 0

Km: 47.10 Tipo: 1 Sent: 0

41 CARR: Tecamachalco - Cañada Morelos

CLAVE: 21002

RUTA: PUE



Km: 0.00 Tipo: 3 Sent: 1

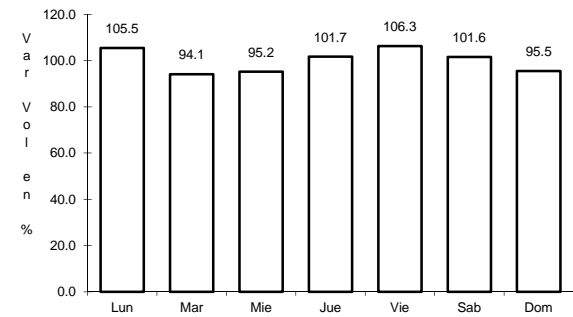
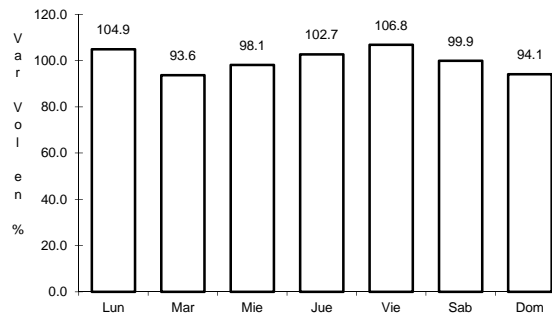
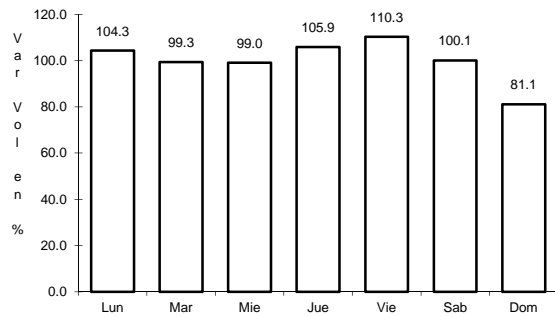
Km: 0.00 Tipo: 3 Sent: 2

Km: 44.46 Tipo: 1 Sent: 0

42 CARR: Tecamachalco - Quecholac

CLAVE: 21002

RUTA: PUE



Km: 7.80 Tipo: 1 Sent: 0

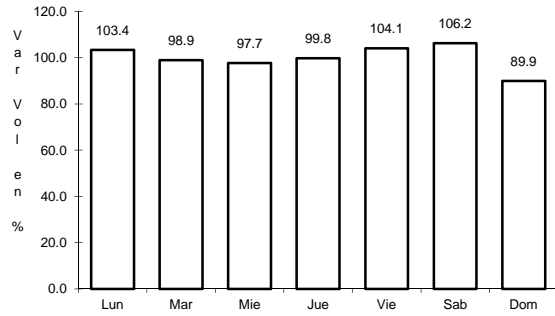
Km: 7.80 Tipo: 3 Sent: 1

Km: 7.80 Tipo: 3 Sent: 2

43 CARR: Zacatlán - Zapotitlán

CLAVE: 21580

RUTA: PUE



Km: 0.00

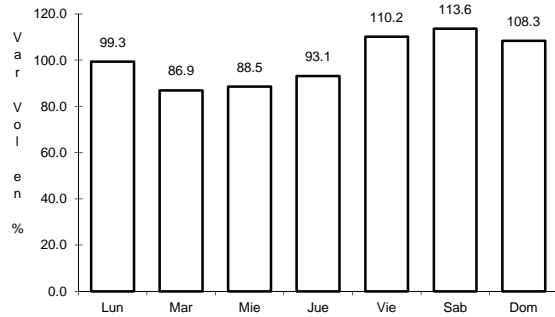
Tipo: 3

Sent: 0

44 CARR: Atlixco - Jantetelco (Cuota)

CLAVE: 00430

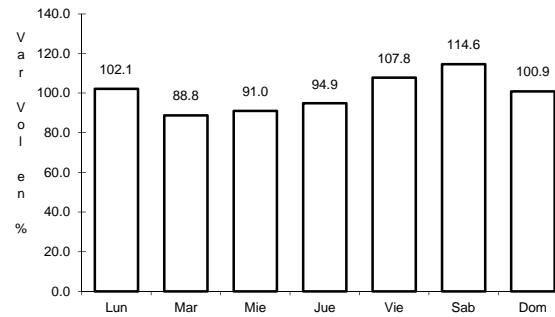
RUTA: PUE-D



Km: 0.00

Tipo: 3

Sent: 0



Km: 54.90

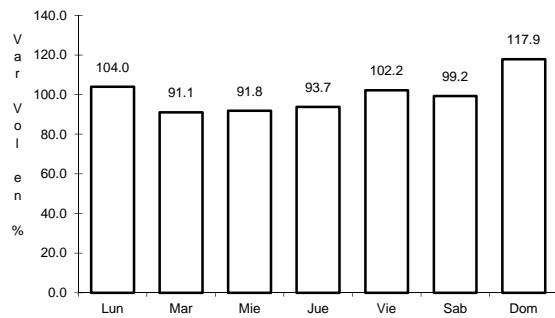
Tipo: 1

Sent: 0

45 CARR: Libres - Teziutlán (Cuota)

CLAVE: 21014

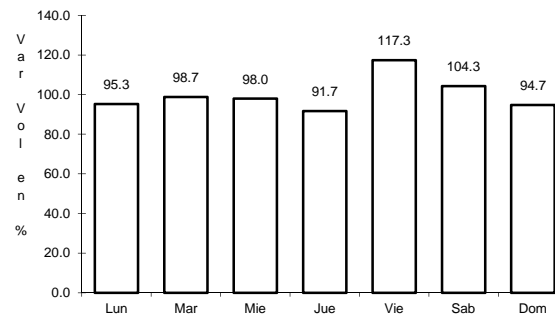
RUTA: PUE-D



Km: 0.00

Tipo: 3

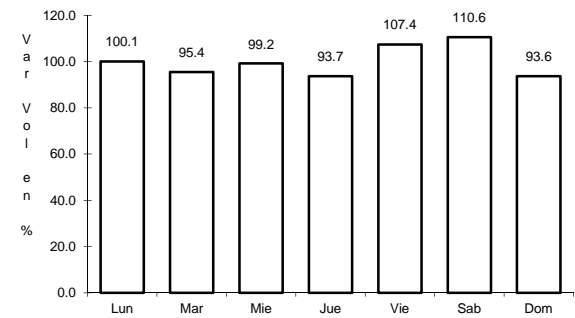
Sent: 0



Km: 40.00

Tipo: 1

Sent: 0



Km: 62.00

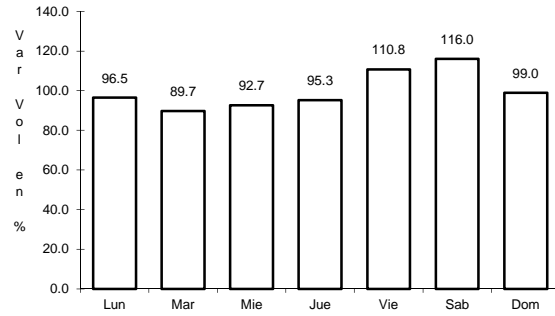
Tipo: 1

Sent: 0

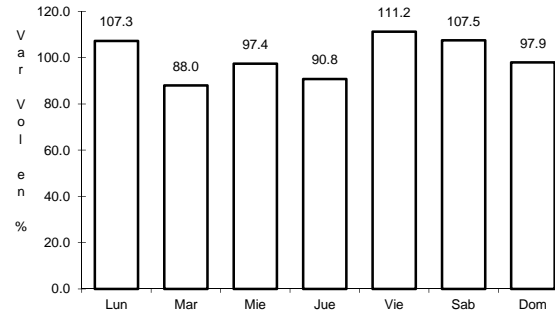
46 CARR: Puebla - Atlixco (Cuota)

CLAVE: 21585

RUTA: PUE-D



Km: 0.00 Tipo: 3 Sent: 1

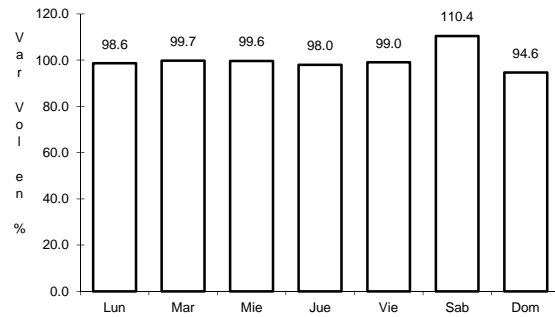


Km: 0.00 Tipo: 3 Sent: 2

47 CARR: Tlaxco - Tejocotal (Cuota)

CLAVE: 00209

RUTA: PUE-D

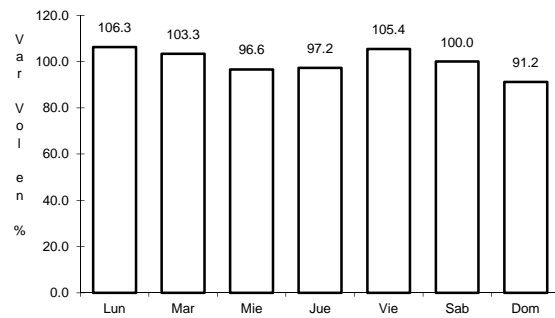


Km: 0.00 Tipo: 3 Sent: 0

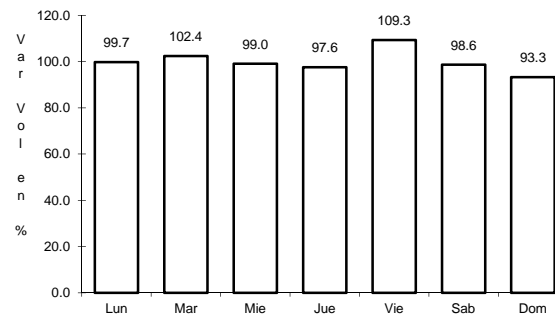
48 CARR: Ramal a Tulcingo del Valle

CLAVE: 21578

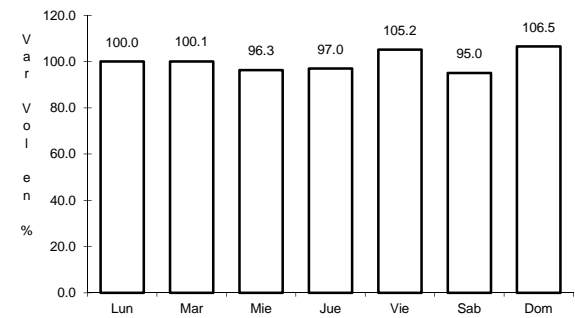
RUTA: PUE-MEX-093



Km: 0.00 Tipo: 3 Sent: 0



Km: 21.01 Tipo: 3 Sent: 0

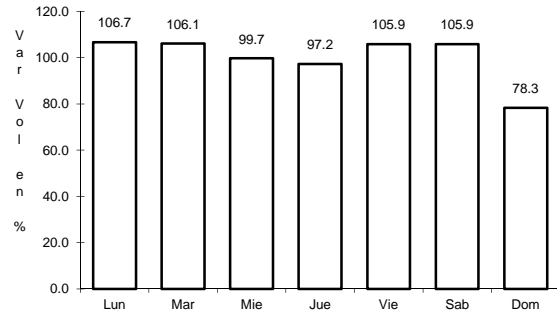


Km: 43.00 Tipo: 1 Sent: 0

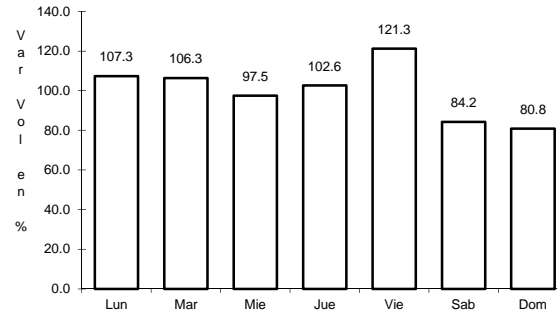
49 CARR: Tehuacán - Huitzo

CLAVE: 00211

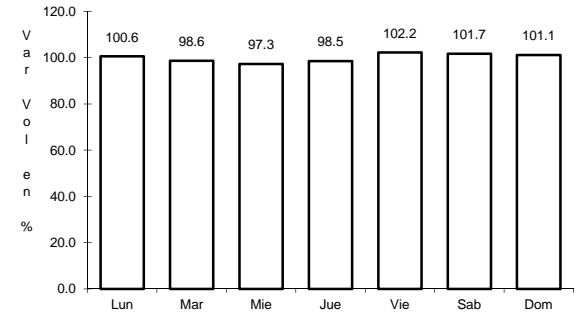
ruta: PUE-MEX-135



Km: 0.00 Tipo: 3 Sent: 0



Km: 118.80 Tipo: 1 Sent: 0

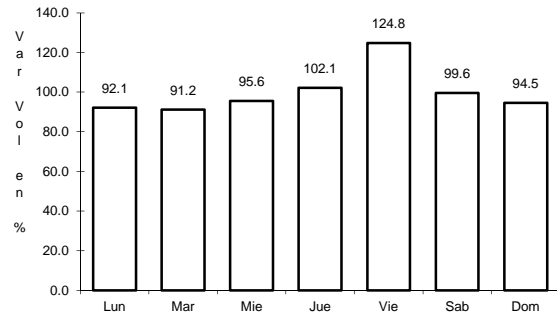


Km: 202.70 Tipo: 1 Sent: 0

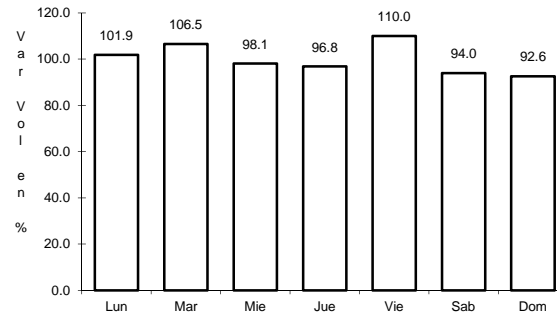
50 CARR: Teotitlán de Flores Magón - Tuxtepec

CLAVE: 00108

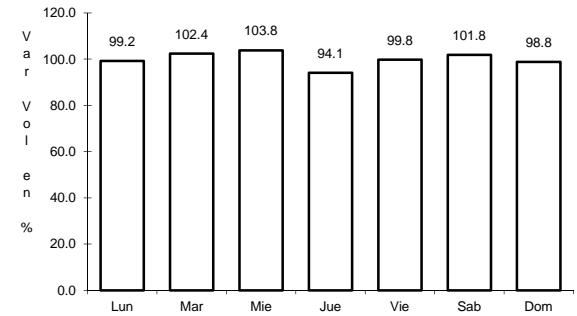
ruta: OAX-PUE-MEX-182



Km: 0.00 Tipo: 3 Sent: 0



Km: 65.00 Tipo: 1 Sent: 0



Km: 185.00 Tipo: 1 Sent: 0