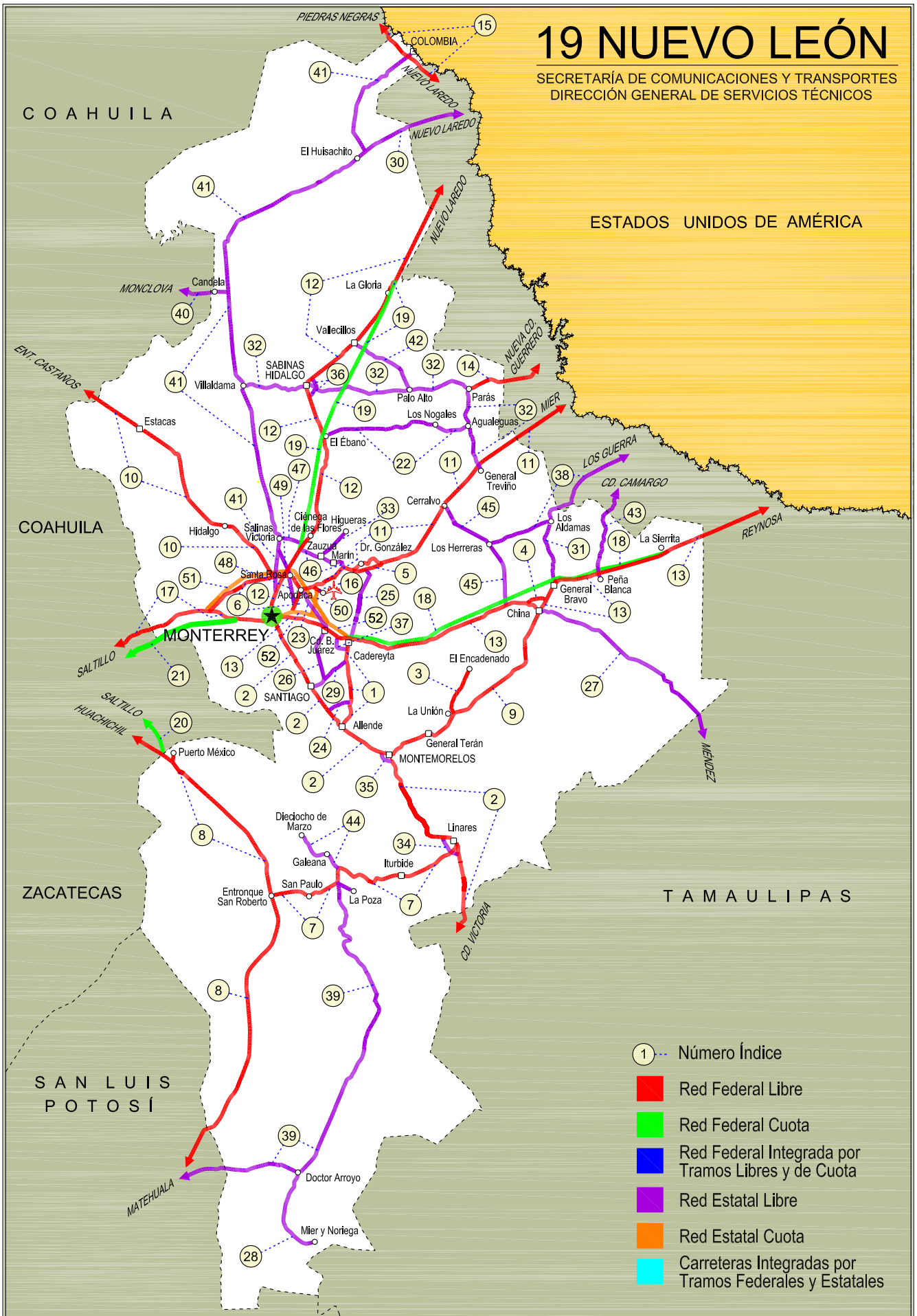
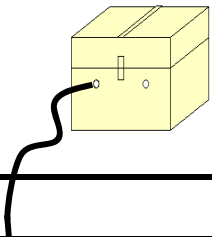


19 NUEVO LEÓN

SECRETARÍA DE COMUNICACIONES Y TRANSPORTES
DIRECCIÓN GENERAL DE SERVICIOS TÉCNICOS





NUEVO LEON

NO. INDICE	CARRETERA	RUTA
---RED FEDERAL LIBRE---		
1	Cadereyta de Jiménez - Allende	MEX-009
2	Ciudad Victoria - Monterrey	MEX-085
3	La Unión - El Encadenado	MEX
4	Libramiento de China	MEX-040
5	Libramiento de Dr. González	MEX-054
6	Libramiento Noroeste de Monterrey	MEX-040
7	Linares - Ent. San Roberto	MEX-058
8	Matehuala - Ent. Puerto México	MEX-057
9	Montemorelos - China	MEX-035
10	Monterrey - Castaños	MEX-053
11	Monterrey - Mier	MEX-054
12	Monterrey - Nuevo Laredo (Libre)	MEX-085
13	Monterrey - Reynosa (Libre)	MEX-040
14	Paras - Nueva Ciudad Guerrero	MEX-030
15	Piedras Negras - Nuevo Laredo	MEX-002
16	Ramal a Aeropuerto Mariano Escobedo	MEX-054
17	Saltillo - Monterrey	MEX-040
---RED FEDERAL DE CUOTA---		
18	Cadereyta - Reynosa (Cuota)	MEX-040D
19	Monterrey - Nuevo Laredo (Cuota)	MEX-085D
20	Puerto México - La Carbonera (Cuota)	MEX-057D
21	Saltillo - Monterrey (Cuota)	MEX-040D
---RED ESTATAL LIBRE---		
22	Agualeguas - El Ébano	NL-023
23	Apodaca - Villa Juárez	NL
24	Atongo - Lazarillos	NL
25	Cadereyta de Jiménez - Doctor González	NL
26	Cd. Benito Juárez - Villa de Santiago	NL
27	China - Méndez	NL-TAM
28	Doctor Arroyo - Mier y Noriega	NL-088
29	Ent. Hacienda del Cielo - T. Der. Cadereyta	NL
30	Ent. Huisachito - Nuevo Laredo	NL-001-TAM
31	Gral. Bravo - Los Aldamas	NL-030
32	Gral. Treviño - Villaldama	NL-003
33	Hacienda Guadalupe - Higueras	NL-006
34	Libramiento de Linares	NL
35	Libramiento de Montemorelos	NL
36	Libramiento de Sabinas Hidalgo	NL
37	Libramiento Poniente de Cadereyta	NL
38	Los Guerra - Los Herreras	TAM-NL
39	Matehuala - La Poza	SLP-029
40	Monclova - Estación Candela	COA-030-NL
41	Monterrey - Colombia	NL-001
42	Palo Alto - Vallecillos	NL
43	Peña Blanca - Cd. Camargo	NL-TAM
44	Ramal a 18 de Marzo	NL
45	Ramal a Cerralvo	NL-013
46	Ramal a Marín	NL
47	Salinas Victoria - Ciénega de Flores	NL
48	Santa Rosa - Mezquital	NL
49	Santa Rosa - Salinas Victoria	NL
---RED ESTATAL DE CUOTA---		
50	Aeropuerto de Monterrey (Cuota)	NL-D
51	Anillo Periférico de Monterrey (Cuota)	NL-D
52	Monterrey - Cadereyta (Cuota)	NL-D

NUEVO LEON

1 CARR: Cadereyta de Jiménez - Allende

CLAVE: 19009

RUTA: MEX-009

AÑO: 2015

LUGAR	ESTACION				CLASIFICACION VEHICULAR EN PORCIENTO														COORDENADAS	
	KM	TE	SC	TDPA	M	A	B	C2	C3	T3S2	T3S3	T3S2R4	OTROS	A	B	C	K'	D	LATITUD	LONGITUD
Cadereyta de Jiménez	0.00	3	1	4193	1.9	86.6	0.7	7.9	1.1	1.1	0.4	0.1	0.2	88.5	0.7	10.8	0.093	0.512	25.557743	-100.006035
Cadereyta de Jiménez	0.00	3	2	4003	1.9	84.8	0.7	9.5	1.3	1.1	0.4	0.1	0.2	86.7	0.7	12.6	0.092	0.512	25.557735	-100.006030
T. der. Huajuquito	7.30	3	0	6587	1.1	75.6	0.8	8.5	2.0	6.0	2.1	3.0	0.9	76.7	0.8	22.5	0.148	0.509	25.519364	-100.007319
T. Izq. Atongo	26.80	1	0	5915	1.5	72.2	1.1	8.8	3.2	6.5	2.2	4.0	0.5	73.7	1.1	25.2	0.083	0.526	25.369247	-99.986715
Allende	37.00	1	1	7138	2.2	79.7	0.9	5.9	3.4	3.6	1.5	2.3	0.5	81.9	0.9	17.2	0.093	0.524	25.291103	-100.014463
Allende	37.00	1	2	6485	1.9	77.7	1.0	6.9	3.8	3.9	1.7	2.6	0.5	79.6	1.0	19.4	0.089	0.524	25.291118	-100.014479

2 CARR: Ciudad Victoria - Monterrey

CLAVE: 00462

RUTA: MEX-085

AÑO: 2015

LUGAR	ESTACION				CLASIFICACION VEHICULAR EN PORCIENTO														COORDENADAS	
	KM	TE	SC	TDPA	M	A	B	C2	C3	T3S2	T3S3	T3S2R4	OTROS	A	B	C	K'	D	LATITUD	LONGITUD
Cd. Victoria (Lateral)	0.00	3	1	1072	5.8	76.9	0.5	15.2	0.7	0.5	0.2	0.0	0.2	82.7	0.5	16.8	0.088	0.522	23.780425	-99.136362
Cd. Victoria (Central)	0.00	3	1	6084	2.8	84.5	1.5	8.4	0.9	1.0	0.5	0.3	0.1	87.3	1.5	11.2	0.087	0.521	23.780425	-99.136362
Cd. Victoria (Lateral)	0.00	3	2	1169	6.6	74.7	0.5	16.5	0.8	0.6	0.2	0.0	0.1	81.3	0.5	18.2	0.102	0.522	23.780393	-99.136358
Cd. Victoria (Central)	0.00	3	2	5584	2.9	83.3	1.5	9.4	0.9	1.1	0.5	0.3	0.1	86.2	1.5	12.3	0.092	0.521	23.780393	-99.136358
T. Der. Güemez	19.60	3	0	6842	0.9	80.5	3.4	9.0	1.4	3.2	0.6	0.7	0.3	81.4	3.4	15.2	0.072	0.512	23.916028	-99.112361
T. Izq. Santa Engracia	27.35	3	0	6805	0.4	64.8	5.0	7.5	2.2	8.9	2.8	7.5	0.9	65.2	5.0	29.8	0.084	0.512	23.988667	-99.111333
Barretal	39.00	3	0	6307	0.3	58.4	6.4	8.0	2.1	11.0	3.3	9.6	0.9	58.7	6.4	34.9	0.074	0.505	24.091028	-99.138167
T. Izq. Hidalgo y La Mesa	77.50	1	0	5691	0.3	58.7	6.6	8.5	2.2	10.5	3.8	8.5	0.9	59.0	6.6	34.4	0.075	0.501	24.245333	-99.426833
Villagrán	106.00	1	0	4976	0.4	55.9	6.8	9.0	2.7	11.4	3.9	9.0	0.9	56.3	6.8	36.9	0.090	0.502	24.467500	-99.494778
T. Izq. Villa Mainero	118.00	3	0	5715	1.0	50.0	6.9	10.8	3.4	11.7	4.3	11.0	0.9	51.0	6.9	42.1	0.081	0.517	24.568944	-99.546667
Lim. Edos. Term. Tamps. Ppia. N. L.	126.20																			
Linares	154.00	1	0	7175	1.1	57.0	5.3	11.3	3.4	10.1	3.3	7.7	0.8	58.1	5.3	36.6	0.079	0.508	24.834500	-99.558917
La Laja	171.00	3	1	5358	0.7	68.8	4.9	8.1	3.1	6.4	2.3	5.2	0.5	69.5	4.9	25.6	0.117	0.508	24.921973	-99.688213
La Laja	171.00	3	2	5528	0.8	67.4	5.1	8.1	3.4	6.9	2.4	5.4	0.5	68.2	5.1	26.7	0.090	0.508	24.921967	-99.688223
Montemorelos	205.00	3	1	9555	1.0	76.5	2.9	8.4	2.0	4.0	1.8	2.8	0.6	77.5	2.9	19.6	0.108	0.503	25.202419	-99.906496
Montemorelos	205.00	3	2	9442	1.0	73.5	3.1	9.4	2.4	4.8	2.0	3.2	0.6	74.5	3.1	22.4	0.080	0.503	25.202411	-99.906479
Allende	227.45	3	1	13838	0.9	81.5	2.2	7.6	1.8	3.0	1.1	1.6	0.3	82.4	2.2	15.4	0.128	0.504	25.296026	-100.048762
Allende	227.45	3	2	13606	0.9	80.0	2.5	8.4	1.9	3.1	1.2	1.7	0.3	80.9	2.5	16.6	0.102	0.504	25.296035	-100.048778
El Cercado	249.00	1	1	23532	1.2	86.2	1.4	6.1	1.1	2.0	0.7	1.1	0.2	87.4	1.4	11.2	0.100	0.502	25.397016	-100.125099
El Cercado	249.00	1	2	23701	1.3	85.0	1.6	6.4	1.3	2.1	0.8	1.3	0.2	86.3	1.6	12.1	0.087	0.502	25.397016	-100.125100
T. Der. Las Huertas	257.00	3	1	22132	0.9	86.1	1.1	7.5	0.9	1.7	0.8	0.8	0.2	87.0	1.1	11.9	0.094	0.543	25.466218	-100.173309
T. Der. Las Huertas	257.00	3	2	26260	0.7	84.8	1.3	8.4	1.0	1.9	0.8	0.9	0.2	85.5	1.3	13.2	0.127	0.543	25.466232	-100.173306
T. Izq. el Barro	266.00	3	1	28711	0.4	89.4	1.0	5.0	0.9	1.5	0.8	0.7	0.3	89.8	1.0	9.2	0.122	0.504	25.527326	-100.210031
T. Izq. el Barro	266.00	3	2	29194	0.4	88.2	1.1	5.6	1.0	1.7	0.9	0.8	0.3	88.6	1.1	10.3	0.125	0.504	25.527319	-100.210029

NUEVO LEON

2 CARR: Ciudad Victoria - Monterrey

CLAVE: 00462

RUTA: MEX-085

AÑO: 2015

LUGAR	ESTACION				CLASIFICACION VEHICULAR EN PORCIENTO														COORDENADAS	
	KM	TE	SC	TDPA	M	A	B	C2	C3	T3S2	T3S3	T3S2R4	OTROS	A	B	C	K'	D	LATITUD	LONGITUD
La Estanzuela	274.82	3	1	51477	0.3	88.5	0.5	5.6	0.6	1.4	2.0	0.5	0.6	88.8	0.5	10.7	0.091	0.514	25.590135	-100.259484
La Estanzuela	274.82	3	2	54370	0.4	87.4	0.5	6.4	0.6	1.6	2.0	0.5	0.6	87.8	0.5	11.7	0.075	0.514	25.590136	-100.259474
Monterrey (Baja)	287.00	1	1	12932	0.9	85.6	0.4	4.1	0.4	2.3	4.4	1.0	0.9	86.5	0.4	13.1	0.061	0.523	25.601803	-100.265676
Monterrey (Alta)	287.00	1	1	48349	0.4	87.7	0.3	3.7	0.4	2.0	4.0	0.7	0.8	88.1	0.3	11.6	0.055	0.523	25.601806	-100.265639
Monterrey (Baja)	287.00	1	2	45243	0.5	85.4	0.4	4.2	0.4	2.5	4.7	1.0	0.9	85.9	0.4	13.7	0.055	0.523	25.601793	-100.265678
Monterrey (Alta)	287.00	1	2	21914	0.7	84.8	0.3	4.9	0.4	2.3	4.8	0.7	1.1	85.5	0.3	14.2	0.059	0.523	25.601811	-100.265674

3 CARR: La Unión - El Encadenado

CLAVE:

RUTA: MEX

AÑO: 2015

LUGAR	ESTACION				CLASIFICACION VEHICULAR EN PORCIENTO														COORDENADAS	
	KM	TE	SC	TDPA	M	A	B	C2	C3	T3S2	T3S3	T3S2R4	OTROS	A	B	C	K'	D	LATITUD	LONGITUD
La Unión	0.00	3	0	760	2.2	79.3	1.6	11.7	1.8	1.9	0.3	1.2	0.0	81.5	1.6	16.9	0.072	0.503	25.336326	-99.580179
El Encadenado	10.00	1	0	291	8.4	69.5	1.4	18.4	1.9	0.2	0.2	0.0	0.0	77.9	1.4	20.7	0.096	0.503	25.404283	-99.538776

4 CARR: Libramiento de China

CLAVE:

RUTA: MEX-040

AÑO: 2015

LUGAR	ESTACION				CLASIFICACION VEHICULAR EN PORCIENTO														COORDENADAS	
	KM	TE	SC	TDPA	M	A	B	C2	C3	T3S2	T3S3	T3S2R4	OTROS	A	B	C	K'	D	LATITUD	LONGITUD
T. C. Monterrey - Reynosa (Poniente)	0.00	3	0	2453	0.2	59.3	2.8	16.7	2.2	12.9	3.7	1.4	0.8	59.5	2.8	37.7	0.098	0.527	25.710479	-99.246617
T. C. Monterrey - Reynosa (Oriente)	2.41	1	0	2462	0.2	56.3	3.2	17.6	2.5	14.2	3.9	1.7	0.4	56.5	3.2	40.3	0.093	0.528	25.710084	-99.232381

5 CARR: Libramiento de Dr. González

CLAVE: 00127

RUTA: MEX-054

AÑO: 2015

LUGAR	ESTACION				CLASIFICACION VEHICULAR EN PORCIENTO														COORDENADAS	
	KM	TE	SC	TDPA	M	A	B	C2	C3	T3S2	T3S3	T3S2R4	OTROS	A	B	C	K'	D	LATITUD	LONGITUD
T. C. Monterrey - Mier Oeste	0.00	3	0	1847	0.6	65.6	1.1	13.3	2.3	5.9	1.6	8.7	0.9	66.2	1.1	32.7	0.105	0.506	25.848524	-99.967426
T. C. Monterrey - Mier Este	10.90	1	0	2013	0.3	64.9	0.9	8.9	1.4	4.3	1.0	18.2	0.1	65.2	0.9	33.9	0.101	0.504	25.869948	-99.875318

6 CARR: Libramiento Noroeste de Monterrey

CLAVE: 19085

RUTA: MEX-040

AÑO: 2015

LUGAR	ESTACION				CLASIFICACION VEHICULAR EN PORCIENTO														COORDENADAS	
	KM	TE	SC	TDPA	M	A	B	C2	C3	T3S2	T3S3	T3S2R4	OTROS	A	B	C	K'	D	LATITUD	LONGITUD
T. C. Saltillo - Monterrey	0.00	3	1	10629	1.5	44.0	1.8	8.7	3.2	32.0	4.1	3.8	0.9	45.5	1.8	52.7	0.080	0.502	25.714000	-100.546319
T. C. Saltillo - Monterrey	0.00	3	2	10535	1.3	40.3	1.9	9.4	3.6	33.7	4.6	4.3	0.9	41.6	1.9	56.5	0.067	0.502	25.713990	-100.546326
X. C. Monterrey - Castaños	31.00	1	1	25805	1.3	70.4	0.7	5.9	3.1	11.8	3.9	2.0	0.9	71.7	0.7	27.6	0.085	0.515	25.823647	-100.309856

NUEVO LEON

6 CARR : Libramiento Noroeste de Monterrey

CLAVE: 19085

RUTA: MEX-040

AÑO : 2015

LUGAR	ESTACION				CLASIFICACION VEHICULAR EN PORCIENTO													COORDENADAS		
	KM	TE	SC	TDPA	M	A	B	C2	C3	T3S2	T3S3	T3S2R4	OTROS	A	B	C	K'	D	LATITUD	LONGITUD
X. C. Monterrey - Castaños	31.00	1	2	27401	1.0	67.3	0.8	7.1	3.3	12.7	4.7	2.2	0.9	68.3	0.8	30.9	0.071	0.515	25.823652	-100.309928
Apodaca	41.50	1	1	20427	0.7	81.8	0.3	8.6	1.8	2.5	3.0	0.5	0.8	82.5	0.3	17.2	0.070	0.522	25.799619	-100.203892
Apodaca	41.50	1	2	18689	0.7	80.7	0.3	8.9	1.8	2.6	3.6	0.5	0.9	81.4	0.3	18.3	0.092	0.522	25.799586	-100.203889
T. C. Monterrey - Reynosa	48.00	1	1	29841	1.0	89.4	0.7	5.4	0.8	1.2	1.0	0.2	0.3	90.4	0.7	8.9	0.064	0.534	25.671105	-100.169766
T. C. Monterrey - Reynosa	48.00	1	2	34191	1.1	88.4	0.7	6.1	0.9	1.2	1.1	0.2	0.3	89.5	0.7	9.8	0.066	0.534	25.671106	-100.169766

7 CARR : Linares - Ent. San Roberto

CLAVE: 19031

RUTA: MEX-058

AÑO : 2015

LUGAR	ESTACION				CLASIFICACION VEHICULAR EN PORCIENTO													COORDENADAS		
	KM	TE	SC	TDPA	M	A	B	C2	C3	T3S2	T3S3	T3S2R4	OTROS	A	B	C	K'	D	LATITUD	LONGITUD
Linares	0.00	3	0	7672	6.3	76.7	1.0	10.6	2.4	1.6	0.9	0.4	0.1	83.0	1.0	16.0	0.073	0.507	24.840528	-99.574667
Iturbide	44.00	1	0	1294	0.7	74.7	3.9	9.4	4.9	4.1	1.6	0.4	0.3	75.4	3.9	20.7	0.084	0.504	24.732429	-99.886361
T. Izq. Doctor Arroyo	66.00	1	0	2814	0.3	79.8	1.8	12.6	2.2	2.4	0.7	0.1	0.1	80.1	1.8	18.1	0.080	0.509	24.727246	-100.038885
T. C. Matehuala - Ent. Huachichil	98.00	1	0	1254	0.8	73.5	1.4	15.2	3.4	3.9	1.1	0.6	0.1	74.3	1.4	24.3	0.100	0.505	24.675795	-100.295511

8 CARR : Matehuala - Ent. Puerto México

CLAVE: 00405

RUTA: MEX-057

AÑO : 2015

LUGAR	ESTACION				CLASIFICACION VEHICULAR EN PORCIENTO													COORDENADAS		
	KM	TE	SC	TDPA	M	A	B	C2	C3	T3S2	T3S3	T3S2R4	OTROS	A	B	C	K'	D	LATITUD	LONGITUD
Matehuala	0.00	3	1	6945	11.3	63.3	1.8	8.6	1.7	8.8	2.7	1.3	0.5	74.6	1.8	23.6	0.076	0.513	23.669657	-100.631952
Matehuala	0.00	3	2	7312	10.2	61.8	2.0	9.3	1.8	10.2	2.8	1.4	0.5	72.0	2.0	26.0	0.067	0.513	23.669652	-100.631973
T. Izq. Cedral	8.47	1	1	4402	1.5	60.6	3.4	13.5	2.2	13.9	2.5	1.5	0.9	62.1	3.4	34.5	0.072	0.514	23.691996	-100.620529
T. Izq. Cedral	8.47	1	2	4647	2.1	57.8	3.6	14.3	2.5	14.4	2.7	1.6	1.0	59.9	3.6	36.5	0.069	0.514	23.691992	-100.620540
T. Izq. Cedral	8.47	3	1	2316	2.2	49.2	5.1	13.6	1.9	21.4	3.6	2.3	0.7	51.4	5.1	43.5	0.082	0.520	23.700192	-100.616469
T. Izq. Cedral	8.47	3	2	2509	1.2	44.8	5.6	14.8	2.0	24.2	4.0	2.6	0.8	46.0	5.6	48.4	0.083	0.520	23.700199	-100.616475
Lim. Edos. Term. S. L. P. Ppia. N. L.	24.64																			
Santa Ana	59.65	1	1	6999	6.9	29.7	5.2	9.9	7.2	31.0	4.4	4.9	0.8	36.6	5.2	58.2	0.068	0.512	24.080024	-100.386524
Santa Ana	59.65	1	2	7340	8.0	22.7	6.1	11.9	7.5	33.0	4.5	5.3	1.0	30.7	6.1	63.2	0.064	0.512	24.080048	-100.386535
T. Der. Linares	128.99	3	1	7587	1.5	42.3	5.3	7.7	2.4	29.9	4.9	5.2	0.8	43.8	5.3	50.9	0.069	0.526	24.681101	-100.300719
T. Der. Linares	128.99	3	2	8430	1.3	34.1	5.9	8.8	2.8	35.1	5.3	5.8	0.9	35.4	5.9	58.7	0.062	0.526	24.681162	-100.300743
San Rafael	177.18	1	1	7636	1.3	44.6	3.2	6.3	2.8	33.0	3.8	4.2	0.8	45.9	3.2	50.9	0.062	0.512	25.019716	-100.541804
San Rafael	177.18	1	2	8000	0.8	41.3	3.6	6.8	3.2	34.4	4.5	4.6	0.8	42.1	3.6	54.3	0.058	0.512	25.019710	-100.541840
Ent. Puerto México	205.97																			

NUEVO LEON

9 CARR: Montemorelos - China

CLAVE: 19280

RUTA: MEX-035

AÑO: 2015

LUGAR	ESTACION				CLASIFICACION VEHICULAR EN PORCIENTO														COORDENADAS	
	KM	TE	SC	TDPA	M	A	B	C2	C3	T3S2	T3S3	T3S2R4	OTROS	A	B	C	K'	D	LATITUD	LONGITUD
Montemorelos	0.00	3	0	7560	5.5	74.2	0.7	10.8	1.8	5.1	0.9	0.3	0.7	79.7	0.7	19.6	0.098	0.500	25.193890	-99.812994
Gral. Terán	17.60	3	0	2995	2.3	75.6	1.8	12.6	2.7	2.9	1.0	1.0	0.1	77.9	1.8	20.3	0.077	0.506	25.251829	-99.653539
China	93.00	1	0	1223	1.3	70.9	2.1	15.6	2.0	4.8	1.8	1.2	0.3	72.2	2.1	25.7	0.097	0.505	25.671105	-100.169766

10 CARR: Monterrey - Castaños

CLAVE: 00128

RUTA: MEX-053

AÑO: 2015

LUGAR	ESTACION				CLASIFICACION VEHICULAR EN PORCIENTO														COORDENADAS	
	KM	TE	SC	TDPA	M	A	B	C2	C3	T3S2	T3S3	T3S2R4	OTROS	A	B	C	K'	D	LATITUD	LONGITUD
T. C. Monterrey - Nuevo Laredo	0.00	3	0	16687	2.3	78.1	0.7	12.3	3.0	2.1	1.0	0.3	0.2	80.4	0.7	18.9	0.087	0.528	25.808851	-100.282909
X. C. Libramiento Noroeste de Monterrey	3.46	3	1	12932	2.1	71.1	2.0	10.9	3.2	5.9	2.7	1.1	1.0	73.2	2.0	24.8	0.087	0.506	25.831861	-100.307903
X. C. Libramiento Noroeste de Monterrey	3.46	3	2	12645	1.2	68.9	2.3	11.6	3.7	6.9	3.1	1.3	1.0	70.1	2.3	27.6	0.084	0.506	25.831866	-100.307934
T. Der. Villa del Carmen	13.80	1	1	8004	0.4	75.0	0.9	9.7	2.8	5.4	3.4	1.8	0.6	75.4	0.9	23.7	0.089	0.520	25.895496	-100.351282
T. Der. Villa del Carmen	13.80	1	2	7388	0.5	72.6	1.0	10.8	2.9	6.0	3.7	1.9	0.6	73.1	1.0	25.9	0.093	0.520	25.895456	-100.351341
T. Izq. Hidalgo	24.78	1	0	12915	0.7	71.2	1.2	13.6	2.0	5.3	3.7	1.7	0.6	71.9	1.2	26.9	0.074	0.503	25.952465	-100.421472
T. Izq. Hidalgo	24.78	3	0	7184	0.8	61.9	2.6	12.7	2.5	9.4	6.1	3.0	1.0	62.7	2.6	34.7	0.071	0.514	25.995890	-100.462996
T. Izq. Mina	34.75	1	0	7149	0.8	59.1	3.4	15.7	1.7	9.3	5.8	3.2	1.0	59.9	3.4	36.7	0.082	0.507	26.000608	-100.512623
T. Izq. Espinazo	91.90	1	0	3850	0.9	51.6	2.7	12.7	3.1	13.1	9.7	5.2	1.0	52.5	2.7	44.8	0.084	0.505	26.362756	-100.878778
T. Izq. Espinazo	91.90	3	0	3719	0.4	54.0	2.7	9.1	3.0	14.0	10.3	5.6	0.9	54.4	2.7	42.9	0.085	0.506	26.364934	-100.882379
Lim. Edos. Term. N. L. Ppia. Coah.	115.90																			
T. C. Saltillo - Monclova	155.90	1	1	2033	0.1	60.6	1.9	7.4	2.8	12.5	9.1	4.9	0.7	60.7	1.9	37.4	0.078	0.509	26.693329	-101.383939
T. C. Saltillo - Monclova	155.90	1	2	2109	0.1	57.2	2.1	7.8	3.1	12.8	10.8	5.2	0.9	57.3	2.1	40.6	0.079	0.509	26.693341	-101.383923

11 CARR: Monterrey - Mier

CLAVE: 00127

RUTA: MEX-054

AÑO: 2015

LUGAR	ESTACION				CLASIFICACION VEHICULAR EN PORCIENTO														COORDENADAS	
	KM	TE	SC	TDPA	M	A	B	C2	C3	T3S2	T3S3	T3S2R4	OTROS	A	B	C	K'	D	LATITUD	LONGITUD
Monterrey	0.00																			
Apodaca	19.12	1	1	62145	0.7	86.5	0.6	5.0	0.9	2.2	2.4	0.8	0.9	87.2	0.6	12.2	0.072	0.519	25.745746	-100.202877
Apodaca	19.12	1	2	57490	0.8	85.3	0.7	5.3	1.1	2.4	2.6	0.8	1.0	86.1	0.7	13.2	0.070	0.519	25.745746	-100.202869
X. C. Libramiento Noroeste de Monterrey	21.30	3	1	42507	0.5	85.2	0.6	7.1	1.6	2.8	1.3	0.6	0.3	85.7	0.6	13.7	0.081	0.522	25.784424	-100.160490
X. C. Libramiento Noroeste de Monterrey	21.30	3	2	38956	0.5	83.5	0.6	7.8	2.0	3.2	1.4	0.7	0.3	84.0	0.6	15.4	0.093	0.522	25.784748	-100.160397
X. C. Zacatecas - Pesquería	28.15	1	1	12009	1.0	76.6	1.0	12.6	2.4	2.6	2.6	0.7	0.5	77.6	1.0	21.4	0.092	0.508	25.799411	-100.101452
X. C. Zacatecas - Pesquería	28.15	1	2	11608	0.9	74.2	1.0	14.3	2.6	2.9	2.6	0.9	0.6	75.1	1.0	23.9	0.099	0.508	25.799202	-100.101802
X. C. Zacatecas - Pesquería	28.15	3	0	8179	0.9	74.4	0.8	12.4	3.2	5.0	1.3	1.5	0.5	75.3	0.8	23.9	0.085	0.500	25.806613	-100.093693
X. C. Hacienda Guadalupe - Higuera	38.10	1	0	5291	0.8	78.2	1.6	8.5	1.9	5.1	1.0	2.4	0.5	79.0	1.6	19.4	0.091	0.542	25.854310	-100.025701

NUEVO LEON

11 CARR: Monterrey - Mier

CLAVE: 00127

RUTA: MEX-054

AÑO: 2015

LUGAR	ESTACION				CLASIFICACION VEHICULAR EN PORCIENTO														COORDENADAS	
	KM	TE	SC	TDPA	M	A	B	C2	C3	T3S2	T3S3	T3S2R4	OTROS	A	B	C	K'	D	LATITUD	LONGITUD
X. C. Hacienda Guadalupe - Higueras	38.10	3	0	4062	2.1	70.7	1.1	15.0	1.5	4.1	0.9	4.2	0.4	72.8	1.1	26.1	0.087	0.515	25.854771	-100.017726
Dr. González	47.60	1	0	2221	1.4	83.8	1.1	9.1	1.7	1.8	0.4	0.6	0.1	85.2	1.1	13.7	0.077	0.501	25.851040	-99.967077
Dr. González	47.60	3	0	446	7.6	75.2	5.7	9.5	0.6	1.1	0.1	0.2	0.0	82.8	5.7	11.5	0.128	0.545	25.867212	-99.933303
T. Der. Empalme Los Ramones	74.10	1	0	1726	0.3	65.6	1.9	12.1	2.2	5.3	1.3	11.0	0.3	65.9	1.9	32.2	0.110	0.506	25.923439	-99.721675
Cerralvo	95.95	1	0	3027	0.4	69.6	1.1	9.2	1.2	3.8	1.3	13.0	0.4	70.0	1.1	28.9	0.087	0.503	26.068324	-99.626319
Gral. Treviño	115.80	3	0	1215	0.2	61.6	2.0	10.1	1.8	7.1	2.0	14.6	0.6	61.8	2.0	36.2	0.096	0.502	26.232016	-99.470809
Lim. Edos. Term. N. L. Ppia. Tamps.	131.80																			
Mier	156.21	1	0	1220	0.2	56.5	2.3	14.0	3.8	7.5	1.8	13.5	0.4	56.7	2.3	41.0	0.101	0.507	26.426167	-99.164919

12 CARR: Monterrey - Nuevo Laredo (Libre)

CLAVE: 00463

RUTA: MEX-085

AÑO: 2015

LUGAR	ESTACION				CLASIFICACION VEHICULAR EN PORCIENTO														COORDENADAS	
	KM	TE	SC	TDPA	M	A	B	C2	C3	T3S2	T3S3	T3S2R4	OTROS	A	B	C	K'	D	LATITUD	LONGITUD
Monterrey	0.00																			
T. Izq. Gral. Escobedo	12.10	3	1	33794	1.3	85.8	0.8	5.6	0.8	2.3	2.1	0.5	0.8	87.1	0.8	12.1	0.063	0.509	25.788081	-100.282597
T. Izq. Gral. Escobedo	12.10	3	2	32645	0.8	84.9	0.8	6.5	0.9	2.4	2.4	0.5	0.8	85.7	0.8	13.5	0.069	0.509	25.788585	-100.282832
X. C. Libramiento Noroeste de Monterrey	16.00	1	1	28098	0.9	82.6	1.3	7.6	1.6	2.9	1.9	0.5	0.7	83.5	1.3	15.2	0.087	0.517	25.827028	-100.260510
X. C. Libramiento Noroeste de Monterrey	16.00	1	2	30040	1.0	80.6	1.4	8.6	1.7	3.4	2.1	0.5	0.7	81.6	1.4	17.0	0.069	0.517	25.827377	-100.260468
X. C. Libramiento Noroeste de Monterrey	16.00	3	1	39809	2.4	68.5	1.8	7.7	3.2	10.6	3.0	1.9	0.9	70.9	1.8	27.3	0.062	0.506	25.835053	-100.254694
X. C. Libramiento Noroeste de Monterrey	16.00	3	2	40698	1.8	66.3	2.2	8.0	3.6	11.8	3.3	2.1	0.9	68.1	2.2	29.7	0.068	0.506	25.835048	-100.254710
X. C. Santa Rosa - Salinas Victoria	20.19	3	1	29239	2.0	72.2	1.8	7.3	2.7	9.4	2.2	1.6	0.8	74.2	1.8	24.0	0.080	0.509	25.854587	-100.241049
X. C. Santa Rosa - Salinas Victoria	20.19	3	2	30345	2.2	68.8	1.9	8.3	3.3	10.7	2.3	1.7	0.8	71.0	1.9	27.1	0.080	0.509	25.854658	-100.240993
Ciénega de Flores	32.00	1	0	18207	1.6	72.1	1.2	13.2	1.8	8.8	0.7	0.2	0.4	73.7	1.2	25.1	0.074	0.505	25.943949	-100.176915
T. Der. Agualeguas	78.23	3	0	5829	0.6	48.9	2.4	12.4	3.1	28.9	1.4	1.2	1.1	49.5	2.4	48.1	0.070	0.511	26.331963	-100.110373
Sabinas Hidalgo	98.90	3	0	4964	2.0	42.5	2.8	14.0	3.8	31.0	1.9	1.2	0.8	44.5	2.8	52.7	0.065	0.509	26.534348	-100.148738
Vallecillos	124.40	3	0	3944	1.0	33.0	2.7	14.5	3.5	40.9	2.0	1.5	0.9	34.0	2.7	63.3	0.066	0.535	26.663054	-99.980553
T. Izq. Anáhuac	156.80	1	0	3706	2.9	32.6	3.8	14.1	5.0	37.1	1.7	2.0	0.8	35.5	3.8	60.7	0.073	0.510	26.874366	-99.832675
T. Izq. Anáhuac	156.80	3	1	7514	2.1	37.2	3.6	7.5	2.9	41.5	2.0	1.7	1.5	39.3	3.6	57.1	0.083	0.501	26.897150	-99.813052
T. Izq. Anáhuac	156.80	3	2	7559	1.2	31.0	4.2	8.0	3.0	46.6	2.4	1.9	1.7	32.2	4.2	63.6	0.073	0.501	26.900695	-99.812091
Lim. Edos. Term. N. L. Ppia. Tamps.	184.56																			
T. Der. Mier	205.90	1	1	8090	0.6	48.6	3.2	10.3	2.5	32.2	0.9	1.1	0.6	49.2	3.2	47.6	0.095	0.509	27.288862	-99.604835
T. Der. Mier	205.90	1	2	8382	1.0	44.6	3.7	11.7	2.5	33.5	1.0	1.3	0.7	45.6	3.7	50.7	0.068	0.509	27.292600	-99.603019
T. Der. Mier	205.90	3	1	6799	1.4	52.0	3.8	9.0	4.1	26.3	1.2	0.9	1.3	53.4	3.8	42.8	0.075	0.509	27.314969	-99.591241
T. Der. Mier	205.90	3	2	7047	0.7	45.8	4.1	10.5	4.5	30.7	1.3	1.0	1.4	46.5	4.1	49.4	0.071	0.509	27.314977	-99.591235
Nuevo Laredo	228.00	1	1	11626	1.2	64.9	2.6	9.3	3.7	14.8	1.4	0.5	1.6	66.1	2.6	31.3	0.072	0.508	27.386911	-99.552684

NUEVO LEON

12 CARR: Monterrey - Nuevo Laredo (Libre)

CLAVE: 00463

RUTA: MEX-085

AÑO: 2015

LUGAR	ESTACION				CLASIFICACION VEHICULAR EN PORCIENTO														COORDENADAS	
	KM	TE	SC	TDPA	M	A	B	C2	C3	T3S2	T3S3	T3S2R4	OTROS	A	B	C	K'	D	LATITUD	LONGITUD
Nuevo Laredo	228.00	1	2	11245	0.8	62.6	2.8	10.0	3.9	16.0	1.6	0.6	1.7	63.4	2.8	33.8	0.075	0.508	27.386928	-99.552674

13 CARR: Monterrey - Reynosa (Libre)

CLAVE: 00088

RUTA: MEX-040

AÑO: 2015

LUGAR	ESTACION				CLASIFICACION VEHICULAR EN PORCIENTO														COORDENADAS	
	KM	TE	SC	TDPA	M	A	B	C2	C3	T3S2	T3S3	T3S2R4	OTROS	A	B	C	K'	D	LATITUD	LONGITUD
T. C. Monterrey - Mier	0.00																			
Villa Juárez	19.10	1	1	22840	1.9	87.6	0.2	6.8	0.6	0.9	1.4	0.3	0.3	89.5	0.2	10.3	0.080	0.503	25.653783	-100.117718
Villa Juárez	19.10	1	2	23105	1.7	86.8	0.2	7.6	0.6	1.0	1.5	0.3	0.3	88.5	0.2	11.3	0.085	0.503	25.653783	-100.117704
Villa Juárez	19.10	3	1	13530	1.5	86.1	0.4	7.9	1.2	1.2	1.2	0.2	0.3	87.6	0.4	12.0	0.075	0.503	25.631437	-100.075958
Villa Juárez	19.10	3	2	13678	1.5	84.2	0.4	9.6	1.2	1.3	1.3	0.2	0.3	85.7	0.4	13.9	0.083	0.503	25.631441	-100.075956
Puente Cadereyta	30.50	2	1	2112	0.6	66.8	0.4	6.9	4.2	12.4	2.3	5.7	0.7	67.4	0.4	32.2	0.091	0.500	25.601076	-100.005752
Puente Cadereyta	30.50	2	2	2112	0.6	66.8	0.4	6.9	4.2	12.4	2.3	5.7	0.7	67.4	0.4	32.2	0.091	0.500	25.601076	-100.005752
Refinería de Cadereyta	33.00	3	0	5781	0.8	68.2	1.6	16.3	2.6	7.2	1.9	0.8	0.6	69.0	1.6	29.4	0.075	0.531	25.594445	-99.921904
T. Izq. Los Ramones	68.78	3	0	3000	0.3	63.9	2.1	16.4	2.1	11.3	3.0	0.6	0.3	64.2	2.1	33.7	0.079	0.522	25.620583	-99.625798
Gral. Bravo	125.00	1	0	4510	0.7	69.0	2.0	15.5	1.4	7.7	2.1	1.0	0.6	69.7	2.0	28.3	0.080	0.516	25.776116	-99.189423
Lim. Edos. Term. N. L. Ppia. Tamps.	192.00																			
T. Izq. Díaz Ordáz	192.55	1	1	4470	0.4	67.7	3.9	9.0	1.7	10.3	2.5	3.5	1.0	68.1	3.9	28.0	0.098	0.503	25.967437	-98.594097
T. Izq. Díaz Ordáz	192.55	1	2	4519	0.5	64.6	4.3	9.7	1.9	11.1	2.6	4.3	1.0	65.1	4.3	30.6	0.096	0.503	25.967946	-98.594202
Reynosa	225.00	1	1	19715	0.6	83.6	1.7	8.0	1.0	3.3	0.7	0.9	0.2	84.2	1.7	14.1	0.078	0.549	26.041890	-98.402525
Reynosa	225.00	1	2	16168	0.5	82.3	1.8	8.7	1.2	3.7	0.7	0.9	0.2	82.8	1.8	15.4	0.093	0.549	26.042699	-98.402192

14 CARR: Paras - Nueva Ciudad Guerrero

CLAVE: 00476

RUTA: MEX-030

AÑO: 2015

LUGAR	ESTACION				CLASIFICACION VEHICULAR EN PORCIENTO														COORDENADAS	
	KM	TE	SC	TDPA	M	A	B	C2	C3	T3S2	T3S3	T3S2R4	OTROS	A	B	C	K'	D	LATITUD	LONGITUD
Paras	0.00	3	0	275	1.8	70.3	0.8	21.4	1.4	1.2	1.4	1.6	0.1	72.1	0.8	27.1	0.142	0.545	26.502052	-99.516251
Lim. Edos. Term. N. L. Ppia. Tamps.	13.10																			
T. C. Reynosa - (T. C. Monterrey - Nuevo Laredo)	32.00	1	0	241	0.0	65.1	1.2	28.6	1.0	1.1	1.3	1.6	0.1	65.1	1.2	33.7	0.199	0.534	26.554915	-99.244331

15 CARR: Piedras Negras - Nuevo Laredo

CLAVE: 00503

RUTA: MEX-002

AÑO: 2015

LUGAR	ESTACION				CLASIFICACION VEHICULAR EN PORCIENTO														COORDENADAS	
	KM	TE	SC	TDPA	M	A	B	C2	C3	T3S2	T3S3	T3S2R4	OTROS	A	B	C	K'	D	LATITUD	LONGITUD
T. C. Monclova - Piedras Negras	0.00	3	1	3981	1.6	70.3	0.9	15.0	2.1	7.0	1.8	0.6	0.7	71.9	0.9	27.2	0.083	0.507	28.633369	-100.547776

NUEVO LEON

15 CARR: Piedras Negras - Nuevo Laredo

CLAVE: 00503

RUTA: MEX-002

AÑO: 2015

LUGAR	ESTACION				CLASIFICACION VEHICULAR EN PORCIENTO														COORDENADAS	
	KM	TE	SC	TDPA	M	A	B	C2	C3	T3S2	T3S3	T3S2R4	OTROS	A	B	C	K'	D	LATITUD	LONGITUD
T. C. Monclova - Piedras Negras	0.00	3	2	4102	1.5	68.0	0.9	16.4	2.4	7.4	1.9	0.7	0.8	69.5	0.9	29.6	0.082	0.507	28.633319	-100.547803
El Saucito	16.90	3	0	1279	2.8	56.2	2.9	25.0	2.3	7.1	0.6	2.9	0.2	59.0	2.9	38.1	0.088	0.509	28.501157	-100.466846
T. Der. Villa Unión	37.00	1	0	1106	0.9	64.0	3.1	15.3	3.1	9.4	0.7	3.3	0.2	64.9	3.1	32.0	0.091	0.504	28.340063	-100.390617
T. Der. Villa Unión	37.00	3	0	1080	2.2	65.0	2.9	12.6	2.8	9.5	1.2	3.6	0.2	67.2	2.9	29.9	0.085	0.502	28.335434	-100.389207
Guerrero	42.00	3	0	932	0.2	59.0	3.4	15.0	4.0	13.1	0.9	4.1	0.3	59.2	3.4	37.4	0.086	0.502	28.307452	-100.364347
Lim. Edos. Term. Coah. Ppia. N. L.	124.40																			
T. C. Monclova - Colombia	134.00	3	0	2733	1.3	60.2	2.0	17.3	3.3	12.1	1.2	2.1	0.5	61.5	2.0	36.5	0.084	0.501	27.687505	-99.776242
Lim. Edos. Term. N. L. Ppia. Tamps.	138.20																			
T. Der. Libramiento de Nuevo Laredo	157.70	1	1	4157	9.8	40.8	1.1	7.4	12.2	25.4	1.3	1.0	1.0	50.6	1.1	48.3	0.114	0.511	27.571972	-99.597031
T. Der. Libramiento de Nuevo Laredo	157.70	1	2	4353	0.7	46.9	1.3	8.0	13.0	26.5	1.5	1.1	1.0	47.6	1.3	51.1	0.098	0.511	27.571993	-99.597015
Nuevo Laredo	175.00	1	1	7844	1.6	49.9	1.4	10.4	9.6	23.4	1.8	1.0	0.9	51.5	1.4	47.1	0.099	0.509	27.544778	-99.576938
Nuevo Laredo	175.00	1	2	8118	2.1	44.3	1.8	11.9	10.6	25.2	2.0	1.1	1.0	46.4	1.8	51.8	0.101	0.509	27.545146	-99.576787

16 CARR: Ramal a Aeropuerto Mariano Escobedo

CLAVE: 19510

RUTA: MEX-054

AÑO: 2015

LUGAR	ESTACION				CLASIFICACION VEHICULAR EN PORCIENTO														COORDENADAS	
	KM	TE	SC	TDPA	M	A	B	C2	C3	T3S2	T3S3	T3S2R4	OTROS	A	B	C	K'	D	LATITUD	LONGITUD
T. C. Monterrey - Cd. Mier	0.00	3	1	18655	0.3	88.0	1.1	4.6	1.6	3.0	0.5	0.8	0.1	88.3	1.1	10.6	0.082	0.500	25.786709	-100.135625
T. C. Monterrey - Cd. Mier	0.00	3	2	18680	0.5	86.8	1.3	4.8	1.8	3.4	0.5	0.8	0.1	87.3	1.3	11.4	0.072	0.500	25.787005	-100.135735
Aeropuerto	2.40																			

17 CARR: Saltillo - Monterrey

CLAVE: 00087

RUTA: MEX-040

AÑO: 2015

LUGAR	ESTACION				CLASIFICACION VEHICULAR EN PORCIENTO														COORDENADAS	
	KM	TE	SC	TDPA	M	A	B	C2	C3	T3S2	T3S3	T3S2R4	OTROS	A	B	C	K'	D	LATITUD	LONGITUD
T. C. Saltillo - Arteaga	0.00																			
T. Izq. Zinacamex	4.25	3	1	41857	0.4	87.7	1.2	5.9	0.7	1.4	2.0	0.3	0.4	88.1	1.2	10.7	0.071	0.501	25.483394	-100.971723
T. Izq. Zinacamex	4.25	3	2	41949	0.4	86.5	1.4	6.6	0.7	1.6	2.1	0.3	0.4	86.9	1.4	11.7	0.076	0.501	25.481079	-100.973263
Ramos Arizpe	11.30	1	1	38103	0.4	86.6	1.2	7.7	1.0	1.4	1.3	0.2	0.2	87.0	1.2	11.8	0.085	0.503	25.516072	-100.957338
Ramos Arizpe	11.30	1	2	37704	1.1	84.7	1.2	8.6	1.0	1.6	1.4	0.2	0.2	85.8	1.2	13.0	0.084	0.503	25.516222	-100.957650
T. Der. Aeropuerto	13.00	3	1	24422	0.5	78.5	2.4	10.3	1.8	4.1	1.2	0.5	0.7	79.0	2.4	18.6	0.134	0.529	25.555247	-100.926377
T. Der. Aeropuerto	13.00	3	2	21708	0.4	76.0	2.5	11.6	2.0	4.9	1.4	0.5	0.7	76.4	2.5	21.1	0.131	0.529	25.554410	-100.928080
T. Der. Libramiento J.L.P.	16.00	3	1	23873	0.6	76.5	2.0	9.8	2.5	6.9	0.9	0.6	0.2	77.1	2.0	20.9	0.124	0.508	25.567895	-100.912300
T. Der. Libramiento J.L.P.	16.00	3	2	23093	0.4	75.3	2.0	10.6	2.6	7.0	1.1	0.8	0.2	75.7	2.0	22.3	0.110	0.508	25.565332	-100.915145
Ojo Caliente	26.30	1	1	16791	0.6	61.4	2.7	7.7	2.7	19.8	2.4	2.5	0.2	62.0	2.7	35.3	0.080	0.510	25.610935	-100.843532

NUEVO LEON

17 CARR: Saltillo - Monterrey

CLAVE: 00087

RUTA: MEX-040

AÑO: 2015

LUGAR	ESTACION				CLASIFICACION VEHICULAR EN PORCIENTO													COORDENADAS		
	KM	TE	SC	TDPA	M	A	B	C2	C3	T3S2	T3S3	T3S2R4	OTROS	A	B	C	K'	D	LATITUD	LONGITUD
Ojo Caliente	26.30	1	2	17450	0.8	57.3	3.3	8.5	3.1	21.4	2.7	2.7	0.2	58.1	3.3	38.6	0.077	0.510	25.612982	-100.846911
Lim. Edos. Term. Coah. Ppia. N. L.	33.00																			
T. Izq. Libramiento Noroeste de Monterrey	54.00	1	1	16099	0.8	52.7	3.5	9.3	2.8	23.4	3.1	3.2	1.2	53.5	3.5	43.0	0.073	0.523	25.698179	-100.563155
T. Izq. Libramiento Noroeste de Monterrey	54.00	1	2	17644	0.5	46.8	3.7	10.1	3.0	27.7	3.2	3.7	1.3	47.3	3.7	49.0	0.061	0.523	25.698773	-100.562629
T. Der. Santa Catarina (1° Acceso)	62.46	1	1	30449	0.9	82.0	1.8	8.3	1.5	2.8	1.7	0.7	0.3	82.9	1.8	15.3	0.067	0.546	25.686956	-100.494338
T. Der. Santa Catarina (1° Acceso)	62.46	1	2	36683	1.1	79.8	2.0	9.6	1.6	3.0	1.8	0.8	0.3	80.9	2.0	17.1	0.073	0.546	25.687523	-100.495004
Ppia. Monterrey	79.20	1	1	50930	0.7	84.9	1.0	5.7	1.3	2.4	3.0	0.5	0.5	85.6	1.0	13.4	0.067	0.537	25.674373	-100.425387
Ppia. Monterrey	79.20	1	2	58962	0.7	83.3	1.1	6.2	1.4	2.8	3.4	0.6	0.5	84.0	1.1	14.9	0.065	0.537	25.674435	-100.425540

18 CARR: Cadereyta - Reynosa (Cuota)

CLAVE: 19002

RUTA: MEX-040D

AÑO: 2015

LUGAR	ESTACION				CLASIFICACION VEHICULAR EN PORCIENTO													COORDENADAS		
	KM	TE	SC	TDPA	M	A	B	C2	C3	T3S2	T3S3	T3S2R4	OTROS	A	B	C	K'	D	LATITUD	LONGITUD
Cadereyta de Jiménez	0.00																			
Caseta de Cobro General Bravo	124.00	2	1	2519	0.1	65.7	5.6	3.5	1.3	15.9	1.1	5.9	0.9	65.8	5.6	28.6	0.096	0.500	25.813443	-99.169427
Caseta de Cobro General Bravo	124.00	2	2	2519	0.1	65.7	5.6	3.5	1.3	15.9	1.1	5.9	0.9	65.8	5.6	28.6	0.096	0.500	25.813443	-99.169427
T. C. Monterrey - Reynosa (Libre)	132.02																			

19 CARR: Monterrey - Nuevo Laredo (Cuota)

CLAVE: 19086

RUTA: MEX-085D

AÑO: 2015

LUGAR	ESTACION				CLASIFICACION VEHICULAR EN PORCIENTO													COORDENADAS		
	KM	TE	SC	TDPA	M	A	B	C2	C3	T3S2	T3S3	T3S2R4	OTROS	A	B	C	K'	D	LATITUD	LONGITUD
T. C. Monterrey - Nuevo Laredo	0.00	3	1	13922	0.6	67.6	2.0	7.8	3.3	14.0	2.2	1.6	0.9	68.2	2.0	29.8	0.109	0.518	25.890343	-100.221482
T. C. Monterrey - Nuevo Laredo	0.00	3	2	12942	0.8	64.7	2.2	8.1	3.8	15.2	2.4	1.9	0.9	65.5	2.2	32.3	0.088	0.518	25.890835	-100.222089
Caseta de Cobro Sabinas	74.00	2	1	5628	0.1	43.6	5.0	2.5	0.8	44.1	1.3	1.7	0.9	43.7	5.0	51.3	0.091	0.500	26.512101	-100.007191
Caseta de Cobro Sabinas	74.00	2	2	5628	0.1	43.6	5.0	2.5	0.8	44.1	1.3	1.7	0.9	43.7	5.0	51.3	0.091	0.500	26.512101	-100.007191
T. C. Monterrey - Nuevo Laredo (Libre)	120.50	1	1	5407	1.6	45.7	3.4	5.8	1.8	36.6	2.0	1.6	1.5	47.3	3.4	49.3	0.113	0.522	26.879961	-99.822621
T. C. Monterrey - Nuevo Laredo (Libre)	120.50	1	2	5893	1.2	39.2	3.9	6.6	2.0	41.6	2.1	1.7	1.7	40.4	3.9	55.7	0.074	0.522	26.879969	-99.822599

20 CARR: Puerto México - La Carbonera (Cuota)

CLAVE: 00115

RUTA: MEX-057D

AÑO: 2015

LUGAR	ESTACION				CLASIFICACION VEHICULAR EN PORCIENTO													COORDENADAS		
	KM	TE	SC	TDPA	M	A	B	C2	C3	T3S2	T3S3	T3S2R4	OTROS	A	B	C	K'	D	LATITUD	LONGITUD
Ent. Puerto México	202.00																			
Caseta de Cobro Los Chorros	203.64	2	1	5862	0.1	36.0	5.2	4.3	2.3	41.5	3.5	6.0	1.1	36.1	5.2	58.7	0.076	0.500	25.186795	-100.732080

NUEVO LEON

20 CARR: Puerto México - La Carbonera (Cuota)

CLAVE: 00115

RUTA: MEX-057D

AÑO: 2015

LUGAR	ESTACION				CLASIFICACION VEHICULAR EN PORCIENTO														COORDENADAS	
	KM	TE	SC	TDPA	M	A	B	C2	C3	T3S2	T3S3	T3S2R4	OTROS	A	B	C	K'	D	LATITUD	LONGITUD
Caseta de Cobro Los Chorros	203.64	2	2	5862	0.1	36.0	5.2	4.3	2.3	41.5	3.5	6.0	1.1	36.1	5.2	58.7	0.076	0.500	25.186795	-100.732080
Lim. Edos. Term. N. L. Ppia. Coah.	204.07																			
Lim. Edos. Term. Coah. Ppia. N. L.	204.50																			
Lim. Edos. Term. N. L. Ppia. Coah.	205.76																			
T. Der. San Antonio de Las Alazanas	224.94	1	1	6787	1.7	43.4	3.8	8.2	2.3	29.9	4.4	4.9	1.4	45.1	3.8	51.1	0.068	0.510	25.344599	-100.794714
T. Der. San Antonio de Las Alazanas	224.94	1	2	7054	1.2	38.4	4.3	8.4	2.5	33.3	5.1	5.3	1.5	39.6	4.3	56.1	0.074	0.510	25.344714	-100.794673
T. Der. San Antonio de Las Alazanas	224.94	3	1	7635	1.5	51.2	3.0	7.8	1.9	24.6	4.6	4.0	1.4	52.7	3.0	44.3	0.065	0.507	25.352873	-100.794436
T. Der. San Antonio de Las Alazanas	224.94	3	2	7844	1.4	46.8	3.1	8.3	2.1	27.4	5.2	4.1	1.6	48.2	3.1	48.7	0.069	0.507	25.352895	-100.794446
Los Lirios	228.30	3	1	8628	1.7	46.0	3.4	9.6	2.2	28.9	3.6	3.7	0.9	47.7	3.4	48.9	0.097	0.501	25.392715	-100.796533
Los Lirios	228.30	3	2	8649	1.4	43.1	4.1	9.9	2.4	30.1	3.9	4.1	1.0	44.5	4.1	51.4	0.081	0.501	25.392268	-100.796776
Ent. La Carbonera	235.60																			

21 CARR: Saltillo - Monterrey (Cuota)

CLAVE: 00087

RUTA: MEX-040D

AÑO: 2015

LUGAR	ESTACION				CLASIFICACION VEHICULAR EN PORCIENTO														COORDENADAS	
	KM	TE	SC	TDPA	M	A	B	C2	C3	T3S2	T3S3	T3S2R4	OTROS	A	B	C	K'	D	LATITUD	LONGITUD
Ojo Caliente	46.21	3	1	3037	0.6	47.4	5.0	10.0	4.0	19.8	4.6	7.4	1.2	48.0	5.0	47.0	0.076	0.501	25.617112	-100.906481
Ojo Caliente	46.21	3	2	3027	0.6	41.5	5.9	11.7	4.7	20.7	5.1	8.6	1.2	42.1	5.9	52.0	0.091	0.501	25.617117	-100.906571
Lim. Edos. Term. Coah. Ppia. N. L.	61.08																			
T. Izq. Anillo Periférico de Monterrey (Cuota)	82.00	1	1	6910	1.6	72.6	4.5	6.4	1.1	7.4	1.8	3.7	0.9	74.2	4.5	21.3	0.078	0.503	25.698201	-100.602051
T. Izq. Anillo Periférico de Monterrey (Cuota)	82.00	1	2	6984	0.9	70.1	5.3	7.0	1.3	8.4	2.1	4.0	0.9	71.0	5.3	23.7	0.091	0.503	25.698234	-100.601983
T. Izq. Anillo Periférico de Monterrey (Cuota)	82.00	3	1	3274	0.7	91.6	2.2	5.3	0.1	0.1	0.0	0.0	0.0	92.3	2.2	5.5	0.147	0.550	25.690710	-100.558440
T. Izq. Anillo Periférico de Monterrey (Cuota)	82.00	3	2	2681	0.6	90.5	2.5	6.1	0.2	0.1	0.0	0.0	0.0	91.1	2.5	6.4	0.124	0.550	25.690791	-100.557953
Morones Prieto	96.10																			

22 CARR: Agualeguas - El Ébano

CLAVE: 19004

RUTA: NL-023

AÑO: 2015

LUGAR	ESTACION				CLASIFICACION VEHICULAR EN PORCIENTO														COORDENADAS	
	KM	TE	SC	TDPA	M	A	B	C2	C3	T3S2	T3S3	T3S2R4	OTROS	A	B	C	K'	D	LATITUD	LONGITUD
Agualeguas	0.00	3	0	479	2.3	78.3	1.0	16.0	0.9	1.0	0.0	0.4	0.1	80.6	1.0	18.4	0.111	0.522	26.308065	-99.549640
T. C. Monterrey - Nuevo Laredo	54.00	1	0	611	1.0	56.3	1.5	17.9	3.6	14.1	1.2	3.9	0.5	57.3	1.5	41.2	0.105	0.514	26.330332	-100.107919

NUEVO LEON

23 CARR: Apodaca - Villa Juárez

CLAVE: 00087

RUTA: NL

AÑO: 2015

LUGAR	ESTACION				CLASIFICACION VEHICULAR EN PORCIENTO													COORDENADAS		
	KM	TE	SC	TDPA	M	A	B	C2	C3	T3S2	T3S3	T3S2R4	OTROS	A	B	C	K'	D	LATITUD	LONGITUD
T. C. Monterrey - Cd. Mier	0.00	3	0	19681	1.0	77.6	0.3	16.5	1.8	1.6	0.8	0.2	0.2	78.6	0.3	21.1	0.061	0.530	25.769000	-100.176639
T. Der. Santa Mónica	5.00	1	1	15012	1.4	81.6	1.0	9.2	1.2	2.2	2.3	0.4	0.7	83.0	1.0	16.0	0.064	0.543	25.743016	-100.159901
T. Der. Santa Mónica	5.00	1	2	17863	1.2	79.8	1.1	10.3	1.4	2.4	2.7	0.4	0.7	81.0	1.1	17.9	0.069	0.543	25.743014	-100.159908
T. Der. Santa Mónica	5.00	3	1	13414	1.3	81.9	0.4	9.2	1.4	2.7	2.1	0.6	0.4	83.2	0.4	16.4	0.060	0.522	25.734015	-100.151730
T. Der. Santa Mónica	5.00	3	2	12284	1.4	80.1	0.4	10.2	1.5	3.2	2.2	0.6	0.4	81.5	0.4	18.1	0.061	0.522	25.734019	-100.151731
T. Izq. Aeropuerto	8.60	1	0	16691	1.4	78.4	0.4	13.6	2.0	2.4	1.2	0.4	0.2	79.8	0.4	19.8	0.071	0.518	25.719319	-100.137782
T. Izq. Aeropuerto	8.60	3	0	13056	0.9	76.3	0.7	13.3	3.1	3.6	1.2	0.6	0.3	77.2	0.7	22.1	0.077	0.547	25.712229	-100.135652
T. Der. Dulces Nombres	10.40	1	0	16344	1.5	74.5	0.6	14.0	2.3	4.0	2.1	0.7	0.3	76.0	0.6	23.4	0.065	0.503	25.702673	-100.132510
T. Der. Dulces Nombres	10.40	3	0	19988	1.2	74.6	0.7	9.6	3.6	6.2	2.0	1.3	0.8	75.8	0.7	23.5	0.072	0.518	25.699304	-100.129829
Villa Juárez	16.00	1	1	11315	1.9	79.4	0.6	10.7	1.5	2.8	1.6	0.7	0.8	81.3	0.6	18.1	0.078	0.510	25.657293	-100.079097
Villa Juárez	16.00	1	2	10890	1.6	78.6	0.6	11.2	1.6	3.1	1.8	0.7	0.8	80.2	0.6	19.2	0.073	0.510	25.657277	-100.079101

24 CARR: Atongo - Lazarillos

CLAVE:

RUTA: NL

AÑO: 2015

LUGAR	ESTACION				CLASIFICACION VEHICULAR EN PORCIENTO													COORDENADAS		
	KM	TE	SC	TDPA	M	A	B	C2	C3	T3S2	T3S3	T3S2R4	OTROS	A	B	C	K'	D	LATITUD	LONGITUD
Atongo	0.00	3	0	513	5.3	80.3	0.5	11.4	1.6	0.4	0.5	0.0	0.0	85.6	0.5	13.9	0.113	0.518	25.349994	-99.995811
Lazarillos	7.78	1	0	2047	3.4	84.5	0.1	9.6	0.7	1.6	0.0	0.0	0.1	87.9	0.1	12.0	0.101	0.505	25.312799	-100.040738

25 CARR: Cadereyta de Jiménez - Doctor González

CLAVE: 19473

RUTA: NL

AÑO: 2015

LUGAR	ESTACION				CLASIFICACION VEHICULAR EN PORCIENTO													COORDENADAS		
	KM	TE	SC	TDPA	M	A	B	C2	C3	T3S2	T3S3	T3S2R4	OTROS	A	B	C	K'	D	LATITUD	LONGITUD
T. C. Monterrey - Reynosa	0.00	3	0	729	3.1	52.6	3.3	12.8	4.2	10.7	5.3	7.6	0.4	55.7	3.3	41.0	0.130	0.532	25.597356	-99.939356
X. C. Pesquería - Santa María Floreña	18.00	3	0	364	0.4	53.3	1.5	10.5	7.5	8.3	6.3	11.6	0.6	53.7	1.5	44.8	0.096	0.524	25.753945	-99.913842
Doctor González	30.00	1	0	509	3.0	85.1	0.1	10.6	0.7	0.5	0.0	0.0	0.0	88.1	0.1	11.8	0.069	0.511	25.855541	-99.935852

26 CARR: Cd. Benito Juárez - Villa de Santiago

CLAVE: 00087

RUTA: NL

AÑO: 2015

LUGAR	ESTACION				CLASIFICACION VEHICULAR EN PORCIENTO													COORDENADAS		
	KM	TE	SC	TDPA	M	A	B	C2	C3	T3S2	T3S3	T3S2R4	OTROS	A	B	C	K'	D	LATITUD	LONGITUD
Cd. Benito Juárez	0.00	3	0	19197	1.6	87.0	0.3	8.1	1.1	0.7	0.9	0.1	0.2	88.6	0.3	11.1	0.097	0.505	25.631761	-100.099190
Arboledas de San Roque	4.70	3	0	3879	1.0	86.6	0.1	8.3	1.0	2.2	0.4	0.1	0.3	87.6	0.1	12.3	0.184	0.501	25.592791	-100.121221
T. Izq. Cadereyta de Jiménez	23.00	3	0	3017	2.7	82.3	0.1	10.1	1.5	2.4	0.6	0.1	0.2	85.0	0.1	14.9	0.182	0.502	25.466565	-100.096012
T. C. Cd. Victoria - Monterrey	39.00	1	0	5080	3.1	82.0	0.1	7.8	1.2	3.5	1.4	0.1	0.8	85.1	0.1	14.8	0.129	0.501	25.455604	-100.158688

NUEVO LEON

27 CARR: China - Méndez

CLAVE: 00191

RUTA: NL-TAM

AÑO: 2015

LUGAR	ESTACION				CLASIFICACION VEHICULAR EN PORCIENTO														COORDENADAS	
	KM	TE	SC	TDPA	M	A	B	C2	C3	T3S2	T3S3	T3S2R4	OTROS	A	B	C	K'	D	LATITUD	LONGITUD
China	0.00	3	0	1654	0.4	72.5	3.1	17.2	1.8	2.0	2.6	0.3	0.1	72.9	3.1	24.0	0.085	0.507	25.697442	-99.221034
Lim. Edos. Term. N. L. Ppia. Tamps.	75.00																			
Méndez	100.00																			

28 CARR: Doctor Arroyo - Mier y Noriega

CLAVE: 19088

RUTA: NL-088

AÑO: 2015

LUGAR	ESTACION				CLASIFICACION VEHICULAR EN PORCIENTO														COORDENADAS	
	KM	TE	SC	TDPA	M	A	B	C2	C3	T3S2	T3S3	T3S2R4	OTROS	A	B	C	K'	D	LATITUD	LONGITUD
Doctor Arroyo	0.00	3	0	1730	9.2	70.7	0.3	17.6	0.8	1.1	0.2	0.0	0.1	79.9	0.3	19.8	0.095	0.501	23.654082	-100.188314
Mier y Noriega	31.00																			

29 CARR: Ent. Hacienda del Cielo - T. Der. Cadereyta

CLAVE:

RUTA: NL

AÑO: 2015

LUGAR	ESTACION				CLASIFICACION VEHICULAR EN PORCIENTO														COORDENADAS	
	KM	TE	SC	TDPA	M	A	B	C2	C3	T3S2	T3S3	T3S2R4	OTROS	A	B	C	K'	D	LATITUD	LONGITUD
Hacienda del Cielo	0.00	3	0	1547	4.2	81.8	0.2	10.4	1.0	1.3	1.0	0.0	0.1	86.0	0.2	13.8	0.179	0.500	25.521563	-100.013988
T. Der. Benito Juárez	11.50	1	0	1199	2.5	84.2	0.1	8.4	1.3	1.9	1.3	0.1	0.2	86.7	0.1	13.2	0.189	0.507	25.467170	-100.095744

30 CARR: Ent. Huisachito - Nuevo Laredo

CLAVE: 00074

RUTA: NL-001-TAM

AÑO: 2015

LUGAR	ESTACION				CLASIFICACION VEHICULAR EN PORCIENTO														COORDENADAS	
	KM	TE	SC	TDPA	M	A	B	C2	C3	T3S2	T3S3	T3S2R4	OTROS	A	B	C	K'	D	LATITUD	LONGITUD
T. C. Monterrey - Colombia	0.00	3	0	1036	0.4	66.7	2.5	14.8	1.6	6.8	4.5	2.1	0.6	67.1	2.5	30.4	0.109	0.528	27.353930	-99.950084
Lim. Edos. Term. N. L. Ppia. Tamps.	19.00																			
X. C. Libramiento de Nuevo Laredo	47.00	1	0	1981	0.6	74.4	0.9	14.6	1.9	4.1	1.8	1.3	0.4	75.0	0.9	24.1	0.097	0.515	27.478219	-99.634257
Nuevo Laredo	51.00	1	0	11134	1.3	79.2	1.9	8.1	1.1	6.2	1.0	0.5	0.7	80.5	1.9	17.6	0.078	0.514	27.484834	-99.580797

31 CARR: Gral. Bravo - Los Aldamas

CLAVE: 19030

RUTA: NL-030

AÑO: 2015

LUGAR	ESTACION				CLASIFICACION VEHICULAR EN PORCIENTO														COORDENADAS	
	KM	TE	SC	TDPA	M	A	B	C2	C3	T3S2	T3S3	T3S2R4	OTROS	A	B	C	K'	D	LATITUD	LONGITUD
Gral. Bravo	0.00	3	0	951	0.3	78.4	0.8	17.1	1.0	1.8	0.6	0.0	0.0	78.7	0.8	20.5	0.088	0.503	25.816827	-99.172094
Los Aldamas	31.00																			

NUEVO LEON

32 CARR: Gral. Treviño - Villaldama

CLAVE: 19003

RUTA: NL-003

AÑO: 2015

LUGAR	ESTACION				CLASIFICACION VEHICULAR EN PORCIENTO													COORDENADAS		
	KM	TE	SC	TDPA	M	A	B	C2	C3	T3S2	T3S3	T3S2R4	OTROS	A	B	C	K'	D	LATITUD	LONGITUD
Gral. Treviño	0.00	3	0	728	0.8	79.0	0.5	14.9	0.8	1.4	0.2	2.3	0.1	79.8	0.5	19.7	0.104	0.503	26.230356	-99.488026
Agualeguas	13.00	3	0	717	1.0	77.2	0.6	18.5	0.6	1.2	0.1	0.7	0.1	78.2	0.6	21.2	0.089	0.505	26.321677	-99.537404
Paras	34.00	3	0	275	1.9	64.4	0.6	29.4	1.0	0.8	1.9	0.0	0.0	66.3	0.6	33.1	0.127	0.505	26.505081	-99.531708
El Álamo	62.00	1	0	441	1.7	77.7	0.5	15.7	1.4	2.2	0.4	0.3	0.1	79.4	0.5	20.1	0.120	0.505	26.490508	-99.771353
Villaldama	134.00	1	0	1721	0.9	81.4	1.1	13.6	0.6	1.2	0.3	0.8	0.1	82.3	1.1	16.6	0.085	0.503	26.504177	-100.413298

33 CARR: Hacienda Guadalupe - Higuera

CLAVE: 19006

RUTA: NL-006

AÑO: 2015

LUGAR	ESTACION				CLASIFICACION VEHICULAR EN PORCIENTO													COORDENADAS		
	KM	TE	SC	TDPA	M	A	B	C2	C3	T3S2	T3S3	T3S2R4	OTROS	A	B	C	K'	D	LATITUD	LONGITUD
Hacienda Guadalupe	0.00																			
Marín	3.00	1	1	2500	2.6	81.2	0.5	8.3	2.1	3.0	0.5	1.5	0.3	83.8	0.5	15.7	0.101	0.515	25.859312	-100.024069
Marín	3.00	1	2	2659	2.8	79.2	0.5	9.4	2.2	3.3	0.6	1.8	0.2	82.0	0.5	17.5	0.089	0.515	25.859273	-100.024076
Higuera	15.00																			

34 CARR: Libramiento de Linares

CLAVE: 19506

RUTA: NL

AÑO: 2015

LUGAR	ESTACION				CLASIFICACION VEHICULAR EN PORCIENTO													COORDENADAS		
	KM	TE	SC	TDPA	M	A	B	C2	C3	T3S2	T3S3	T3S2R4	OTROS	A	B	C	K'	D	LATITUD	LONGITUD
T. C. Cd. Victoria - Monterrey (1° Acceso)	0.00	3	0	11500	2.8	63.7	3.3	10.4	2.5	9.0	2.6	5.1	0.6	66.5	3.3	30.2	0.065	0.507	24.846556	-99.568000
T. C. Linares - Ent. San Roberto	2.00	3	0	10621	2.1	63.8	3.7	10.2	2.8	8.6	2.7	5.5	0.6	65.9	3.7	30.4	0.072	0.508	24.853806	-99.577250
T. C. Cd. Victoria - Monterrey (2° Acceso)	6.50																			

35 CARR: Libramiento de Montemorelos

CLAVE: 19492

RUTA: NL

AÑO: 2015

LUGAR	ESTACION				CLASIFICACION VEHICULAR EN PORCIENTO													COORDENADAS		
	KM	TE	SC	TDPA	M	A	B	C2	C3	T3S2	T3S3	T3S2R4	OTROS	A	B	C	K'	D	LATITUD	LONGITUD
T. C. Cd. Victoria - Monterrey (1° Acceso)	0.00	3	1	4698	0.8	68.6	4.2	7.2	3.4	7.3	2.4	5.6	0.5	69.4	4.2	26.4	0.140	0.501	25.128178	-99.811840
T. C. Cd. Victoria - Monterrey (1° Acceso)	0.00	3	2	4712	0.7	65.3	4.7	8.3	3.4	8.1	2.5	6.4	0.6	66.0	4.7	29.3	0.100	0.501	25.128185	-99.811852
T. C. Cd. Victoria - Monterrey (2° Acceso)	3.70																			

NUEVO LEON

36 CARR: Libramiento de Sabinas Hidalgo

CLAVE: 19492

RUTA: NL

AÑO: 2015

LUGAR	ESTACION				CLASIFICACION VEHICULAR EN PORCIENTO													COORDENADAS		
	KM	TE	SC	TDPA	M	A	B	C2	C3	T3S2	T3S3	T3S2R4	OTROS	A	B	C	K'	D	LATITUD	LONGITUD
T. C. Monterrey - Nuevo Laredo	0.00	3	0	3606	0.8	33.3	2.5	14.0	4.5	36.4	5.6	1.5	1.4	34.1	2.5	63.4	0.077	0.539	26.466776	-100.157582
T. C. Monterrey - Nuevo Laredo	9.20	1	0	3097	1.0	30.7	2.4	14.8	5.1	41.1	2.2	1.8	0.9	31.7	2.4	65.9	0.062	0.518	26.524865	-100.151653

37 CARR: Libramiento Poniente de Cadereyta

CLAVE: 19085

RUTA: NL

AÑO: 2015

LUGAR	ESTACION				CLASIFICACION VEHICULAR EN PORCIENTO													COORDENADAS		
	KM	TE	SC	TDPA	M	A	B	C2	C3	T3S2	T3S3	T3S2R4	OTROS	A	B	C	K'	D	LATITUD	LONGITUD
T. C. Monterrey - Reynosa (Libre)	0.00	3	0	13398	2.7	79.4	0.4	6.3	1.5	6.0	1.5	1.1	1.1	82.1	0.4	17.5	0.080	0.505	25.591764	-100.028113
T. C. Cadereyta - Allende	6.00																			

38 CARR: Los Guerra - Los Herreras

CLAVE: 19031

RUTA: TAM-NL

AÑO: 2015

LUGAR	ESTACION				CLASIFICACION VEHICULAR EN PORCIENTO													COORDENADAS		
	KM	TE	SC	TDPA	M	A	B	C2	C3	T3S2	T3S3	T3S2R4	OTROS	A	B	C	K'	D	LATITUD	LONGITUD
Los Herreras	73.00	1	0	529	1.4	81.5	0.3	14.0	0.4	1.5	0.4	0.5	0.0	82.9	0.3	16.8	0.095	0.512	25.902604	-99.393611

39 CARR: Matehuala - La Poza

CLAVE: 00086

RUTA: SLP-029

AÑO: 2015

LUGAR	ESTACION				CLASIFICACION VEHICULAR EN PORCIENTO													COORDENADAS		
	KM	TE	SC	TDPA	M	A	B	C2	C3	T3S2	T3S3	T3S2R4	OTROS	A	B	C	K'	D	LATITUD	LONGITUD
Matehuala	0.00	3	0	3551	8.1	73.0	1.5	10.1	3.5	2.2	0.6	0.6	0.4	81.1	1.5	17.4	0.080	0.535	23.665476	-100.602960
Lim. Edos. Term. S. L. P. Ppia. N. L.	19.70																			
Doctor Arroyo	49.00	1	0	3268	3.8	76.2	1.0	13.9	2.7	1.8	0.2	0.3	0.1	80.0	1.0	19.0	0.089	0.500	23.685569	-100.208549
La Ascención	131.00	1	0	762	2.3	77.5	3.2	13.7	1.8	1.0	0.5	0.0	0.0	79.8	3.2	17.0	0.089	0.523	24.321183	-99.905733

40 CARR: Monclova - Estación Candela

CLAVE: 00501

RUTA: COA-030-NL

AÑO: 2015

LUGAR	ESTACION				CLASIFICACION VEHICULAR EN PORCIENTO													COORDENADAS		
	KM	TE	SC	TDPA	M	A	B	C2	C3	T3S2	T3S3	T3S2R4	OTROS	A	B	C	K'	D	LATITUD	LONGITUD
T. C. Monclova - Piedras Negras	0.00																			
T. Izq. Libramiento de Monclova	5.10	1	1	1892	3.4	77.7	0.7	15.6	1.0	1.0	0.4	0.0	0.2	81.1	0.7	18.2	0.103	0.503	26.930706	-101.387201
T. Izq. Libramiento de Monclova	5.10	1	2	1916	3.3	76.1	0.9	16.7	1.2	1.2	0.4	0.0	0.2	79.4	0.9	19.7	0.112	0.503	26.930714	-101.387188
Lim. Edos. Term. Coah. Ppia. N. L.	118.00																			
T. C. Monterrey - Colombia	125.50	1	0	387	1.1	61.5	3.7	18.0	2.0	10.3	0.9	1.9	0.6	62.6	3.7	33.7	0.121	0.501	26.838211	-100.494909

NUEVO LEON

41 CARR: Monterrey - Colombia

CLAVE: 19001

RUTA: NL-001

AÑO: 2015

LUGAR	ESTACION				CLASIFICACION VEHICULAR EN PORCIENTO														COORDENADAS	
	KM	TE	SC	TDPA	M	A	B	C2	C3	T3S2	T3S3	T3S2R4	OTROS	A	B	C	K'	D	LATITUD	LONGITUD
T. C. Monterrey - Nuevo Laredo	0.00	3	1	25488	0.9	85.7	0.3	7.2	1.4	1.9	1.8	0.4	0.4	86.6	0.3	13.1	0.072	0.560	25.775983	-100.292307
T. C. Monterrey - Nuevo Laredo	0.00	3	2	20022	0.9	83.7	0.3	8.4	1.6	2.4	1.9	0.4	0.4	84.6	0.3	15.1	0.073	0.560	25.775304	-100.291960
X. C. Libramiento Noroeste de Monterrey	7.30	3	1	8888	1.0	70.5	0.3	12.3	5.7	5.9	2.3	1.2	0.8	71.5	0.3	28.2	0.114	0.506	25.835312	-100.295222
X. C. Libramiento Noroeste de Monterrey	7.30	3	2	9111	0.9	67.0	0.3	14.5	6.1	6.3	2.7	1.2	1.0	67.9	0.3	31.8	0.128	0.506	25.835479	-100.295494
T. Izq. Salinas Victoria (1° Acceso)	20.50	3	0	7745	1.2	72.2	0.7	13.9	2.8	5.2	1.5	1.9	0.6	73.4	0.7	25.9	0.082	0.509	25.955891	-100.279548
Villa Aldama	86.50	3	0	2086	1.1	64.7	2.0	17.6	1.6	3.4	3.4	5.7	0.5	65.8	2.0	32.2	0.087	0.500	26.507790	-100.432894
T. Izq. Bustamante	92.25	3	0	1113	1.0	58.1	1.6	18.7	2.1	4.6	5.1	8.0	0.8	59.1	1.6	39.3	0.090	0.505	26.550439	-100.459603
T. Izq. Candela	124.04	1	0	1033	0.2	59.0	1.6	24.1	1.7	3.3	0.0	9.7	0.4	59.2	1.6	39.2	0.098	0.509	26.835703	-100.492844
Lampazos de Naranja	164.00	1	0	1475	0.7	60.1	1.9	19.1	2.0	5.8	2.6	7.1	0.7	60.8	1.9	37.3	0.096	0.503	27.009790	-100.510450
Anáhuac	195.00	1	0	1344	1.1	50.7	1.4	29.4	1.7	4.8	2.4	8.1	0.4	51.8	1.4	46.8	0.081	0.521	27.218886	-100.164154
Huizache	212.70	3	0	1643	0.2	60.4	2.0	17.9	1.2	5.4	3.8	8.3	0.8	60.6	2.0	37.4	0.105	0.512	27.351404	-99.953418
Colombia	263.00	1	0	705	4.2	40.2	1.4	14.2	4.2	24.2	1.5	9.3	0.8	44.4	1.4	54.2	0.115	0.507	27.688542	-99.781430

42 CARR: Palo Alto - Vallecillos

CLAVE: 19036

RUTA: NL

AÑO: 2015

LUGAR	ESTACION				CLASIFICACION VEHICULAR EN PORCIENTO														COORDENADAS	
	KM	TE	SC	TDPA	M	A	B	C2	C3	T3S2	T3S3	T3S2R4	OTROS	A	B	C	K'	D	LATITUD	LONGITUD
T. C. Gral. Treviño - Villa Aldama	0.00	3	0	134	3.2	69.1	1.8	18.4	0.3	1.1	1.7	4.4	0.0	72.3	1.8	25.9	0.100	0.532	26.497696	-99.761257
Vallecillos	43.00	1	0	170	6.0	69.0	0.2	21.7	1.2	1.5	0.2	0.1	0.1	75.0	0.2	24.8	0.147	0.512	26.658719	-99.982209

43 CARR: Peña Blanca - Cd. Camargo

CLAVE: 00102

RUTA: NL-TAM

AÑO: 2015

LUGAR	ESTACION				CLASIFICACION VEHICULAR EN PORCIENTO														COORDENADAS	
	KM	TE	SC	TDPA	M	A	B	C2	C3	T3S2	T3S3	T3S2R4	OTROS	A	B	C	K'	D	LATITUD	LONGITUD
T. C. Monterrey - Reynosa	0.00	3	0	1001	0.1	64.9	1.7	21.5	2.3	4.6	3.8	0.7	0.4	65.0	1.7	33.3	0.093	0.505	25.836622	-99.008496
Lim. Edos. Term. N. L. Ppia. Tamps.	30.00																			
Cd. Camargo	65.00	1	0	2108	0.9	74.1	0.8	21.2	1.1	1.6	0.2	0.0	0.1	75.0	0.8	24.2	0.081	0.503	26.303538	-98.834690

44 CARR: Ramal a 18 de Marzo

CLAVE: 19475

RUTA: NL

AÑO: 2015

LUGAR	ESTACION				CLASIFICACION VEHICULAR EN PORCIENTO														COORDENADAS	
	KM	TE	SC	TDPA	M	A	B	C2	C3	T3S2	T3S3	T3S2R4	OTROS	A	B	C	K'	D	LATITUD	LONGITUD
T. C. Linares - Ent. San Roberto	0.00	3	0	2933	0.6	84.3	1.5	10.9	0.9	1.5	0.2	0.0	0.1	84.9	1.5	13.6	0.078	0.502	24.777416	-100.041802
18 de Marzo	14.00																			

NUEVO LEON

45 CARR: Ramal a Cerralvo

CLAVE: 19013

RUTA: NL-013

AÑO: 2015

LUGAR	ESTACION				CLASIFICACION VEHICULAR EN PORCIENTO														COORDENADAS	
	KM	TE	SC	TDPA	M	A	B	C2	C3	T3S2	T3S3	T3S2R4	OTROS	A	B	C	K'	D	LATITUD	LONGITUD
T. C. Monterrey - Reynosa	0.00	3	0	481	0.3	69.9	1.1	11.9	3.1	3.7	3.7	5.8	0.5	70.2	1.1	28.7	0.106	0.507	25.732400	-99.371518
Los Herrera	21.00	3	0	396	0.8	70.4	1.2	11.7	2.0	2.6	3.1	8.2	0.0	71.2	1.2	27.6	0.111	0.509	25.921079	-99.421270
Cerralvo	58.00	1	0	1442	1.2	77.9	0.5	13.4	1.0	2.1	1.2	2.6	0.1	79.1	0.5	20.4	0.098	0.503	26.081071	-99.604775

46 CARR: Ramal a Marín

CLAVE: 19007

RUTA: NL

AÑO: 2015

LUGAR	ESTACION				CLASIFICACION VEHICULAR EN PORCIENTO														COORDENADAS	
	KM	TE	SC	TDPA	M	A	B	C2	C3	T3S2	T3S3	T3S2R4	OTROS	A	B	C	K'	D	LATITUD	LONGITUD
T. C. Monterrey - Nuevo Laredo	0.00	3	0	19649	1.4	83.4	0.3	9.5	1.7	1.9	1.0	0.6	0.2	84.8	0.3	14.9	0.079	0.503	25.916713	-100.195525
Marín	10.00																			

47 CARR: Salinas Victoria - Ciénega de Flores

CLAVE: 19007

RUTA: NL

AÑO: 2015

LUGAR	ESTACION				CLASIFICACION VEHICULAR EN PORCIENTO														COORDENADAS	
	KM	TE	SC	TDPA	M	A	B	C2	C3	T3S2	T3S3	T3S2R4	OTROS	A	B	C	K'	D	LATITUD	LONGITUD
Salinas Victoria	0.00	3	0	4280	1.2	65.1	2.8	12.1	5.3	8.6	2.0	1.9	1.0	66.3	2.8	30.9	0.080	0.528	25.952616	-100.273153
T. C. Monterrey - Nuevo Laredo (Cuota)	6.00	1	0	4872	1.2	66.2	2.4	10.2	6.1	9.5	2.0	1.5	0.9	67.4	2.4	30.2	0.123	0.517	25.942559	-100.230020
Ciénega de Flores	10.00																			

48 CARR: Santa Rosa - Mezquital

CLAVE: 00087

RUTA: NL

AÑO: 2015

LUGAR	ESTACION				CLASIFICACION VEHICULAR EN PORCIENTO														COORDENADAS	
	KM	TE	SC	TDPA	M	A	B	C2	C3	T3S2	T3S3	T3S2R4	OTROS	A	B	C	K'	D	LATITUD	LONGITUD
X. C. Libramiento Noroeste de Monterrey	0.00	3	1	10861	1.4	72.3	1.2	4.7	3.3	10.6	3.8	2.1	0.6	73.7	1.2	25.1	0.077	0.504	25.816327	-100.222099
X. C. Libramiento Noroeste de Monterrey	0.00	3	2	11027	1.0	71.1	1.3	5.1	3.8	11.1	3.9	2.1	0.6	72.1	1.3	26.6	0.076	0.504	25.816105	-100.221912
Mezquital	9.00																			

49 CARR: Santa Rosa - Salinas Victoria

CLAVE: 19037

RUTA: NL

AÑO: 2015

LUGAR	ESTACION				CLASIFICACION VEHICULAR EN PORCIENTO														COORDENADAS	
	KM	TE	SC	TDPA	M	A	B	C2	C3	T3S2	T3S3	T3S2R4	OTROS	A	B	C	K'	D	LATITUD	LONGITUD
Ent. Salinas Victoria	0.00	3	0	16333	1.4	76.5	1.4	8.2	3.1	5.9	2.0	0.5	1.0	77.9	1.4	20.7	0.085	0.511	25.855533	-100.244303
Salinas Victoria	13.85	1	1	3778	2.4	82.8	4.6	8.0	1.0	0.7	0.3	0.1	0.1	85.2	4.6	10.2	0.095	0.514	25.953858	-100.290477
Salinas Victoria	13.85	1	2	3567	2.4	81.8	4.9	8.4	1.1	0.9	0.3	0.1	0.1	84.2	4.9	10.9	0.114	0.514	25.953856	-100.290477

NUEVO LEON

50 CARR: Aeropuerto de Monterrey (Cuota)

CLAVE:

RUTA: NL-D

AÑO: 2015

LUGAR	ESTACION				CLASIFICACION VEHICULAR EN PORCIENTO														COORDENADAS	
	KM	TE	SC	TDPA	M	A	B	C2	C3	T3S2	T3S3	T3S2R4	OTROS	A	B	C	K'	D	LATITUD	LONGITUD
T. C. Monterrey - Cadereyta (Cuota)	0.00																			
T. C. Apodaca - Villa Juárez	4.10	3	1	10135	0.7	84.3	0.4	4.6	2.2	4.7	1.2	1.2	0.7	85.0	0.4	14.6	0.118	0.510	25.718611	-100.135806
T. C. Apodaca - Villa Juárez	4.10	3	2	10540	0.8	83.0	0.4	4.9	2.5	5.1	1.3	1.2	0.8	83.8	0.4	15.8	0.137	0.510	25.718611	-100.135806
Aeropuerto Mariano Escobedo	11.70																			

51 CARR: Anillo Periférico de Monterrey (Cuota)

CLAVE: 19004

RUTA: NL-D

AÑO: 2015

LUGAR	ESTACION				CLASIFICACION VEHICULAR EN PORCIENTO														COORDENADAS	
	KM	TE	SC	TDPA	M	A	B	C2	C3	T3S2	T3S3	T3S2R4	OTROS	A	B	C	K'	D	LATITUD	LONGITUD
T. C. Saltillo - Monterrey	0.00	3	1	2984	0.4	66.5	3.1	8.1	1.6	14.1	2.0	3.2	1.0	66.9	3.1	30.0	0.123	0.506	25.705222	-100.562342
T. C. Saltillo - Monterrey	0.00	3	2	3055	0.4	62.4	3.4	9.7	1.7	15.6	2.4	3.5	0.9	62.8	3.4	33.8	0.117	0.506	25.705225	-100.562337
X. C. Monterrey - Nuevo Laredo (Libre)	37.70	1	1	4385	1.6	58.2	2.5	11.6	4.1	14.6	3.2	2.8	1.4	59.8	2.5	37.7	0.108	0.509	25.840472	-100.258231
X. C. Monterrey - Nuevo Laredo (Libre)	37.70	1	2	4224	1.8	52.6	2.8	12.6	4.8	17.0	3.8	3.1	1.5	54.4	2.8	42.8	0.089	0.509	25.840483	-100.258236
X. C. Monterrey - Mier	49.30	1	1	4375	0.6	57.2	2.2	8.2	3.8	16.6	4.4	5.6	1.4	57.8	2.2	40.0	0.109	0.512	25.794715	-100.174080
X. C. Monterrey - Mier	49.30	1	2	4589	1.0	51.0	2.5	9.1	4.2	19.8	4.8	6.0	1.6	52.0	2.5	45.5	0.096	0.512	25.794726	-100.174078
T. C. Monterrey - Cadereyta	66.80																			

52 CARR: Monterrey - Cadereyta (Cuota)

CLAVE: 19281

RUTA: NL-D

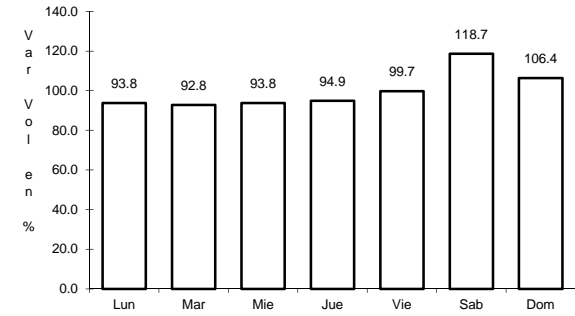
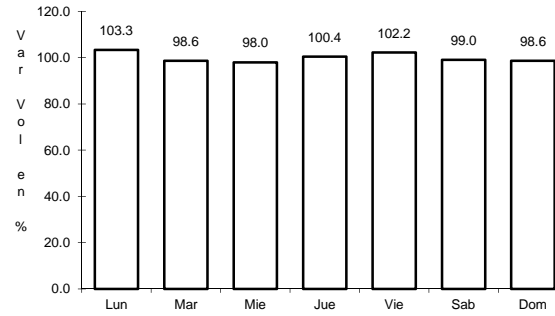
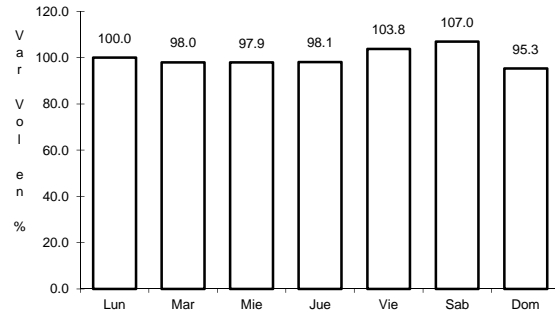
AÑO: 2015

LUGAR	ESTACION				CLASIFICACION VEHICULAR EN PORCIENTO														COORDENADAS	
	KM	TE	SC	TDPA	M	A	B	C2	C3	T3S2	T3S3	T3S2R4	OTROS	A	B	C	K'	D	LATITUD	LONGITUD
T. Av. Bonifacio Salinas	3.05																			
T. Izq. Apodaca (Aeropuerto)	12.50	1	1	8906	0.5	89.2	1.7	5.8	0.8	0.9	0.5	0.4	0.2	89.7	1.7	8.6	0.117	0.508	25.690946	-100.153613
T. Izq. Apodaca (Aeropuerto)	12.50	1	2	8641	0.2	88.6	1.8	6.5	0.8	1.0	0.5	0.4	0.2	88.8	1.8	9.4	0.111	0.508	25.690951	-100.153618
T. Der. Cadereyta	33.10																			

1 CARR: Cadereyta de Jiménez - Allende

CLAVE: 19009

ruta: MEX-009



Km: 0.00 Tipo: 3 Sent: 1

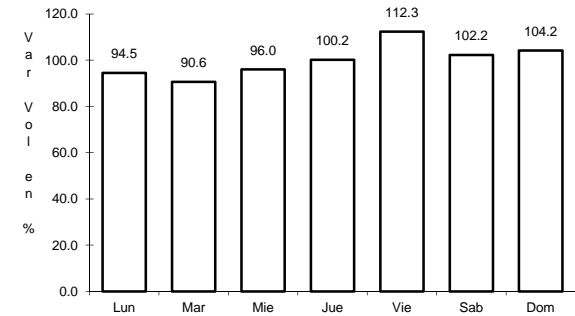
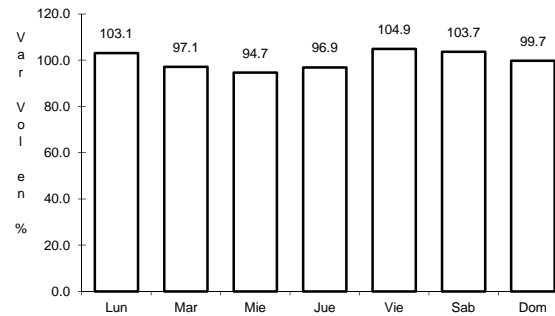
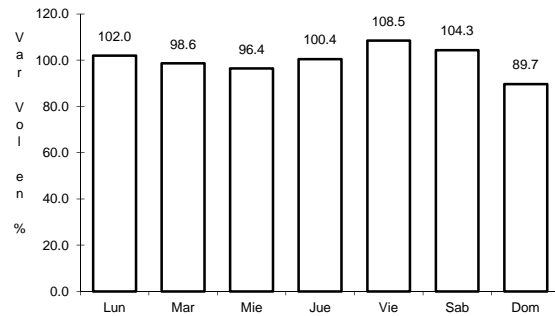
Km: 0.00 Tipo: 3 Sent: 2

Km: 26.80 Tipo: 1 Sent: 0

2 CARR: Ciudad Victoria - Monterrey

CLAVE: 00462

ruta: MEX-085



Km: 0.00 Tipo: 3 Sent: 1

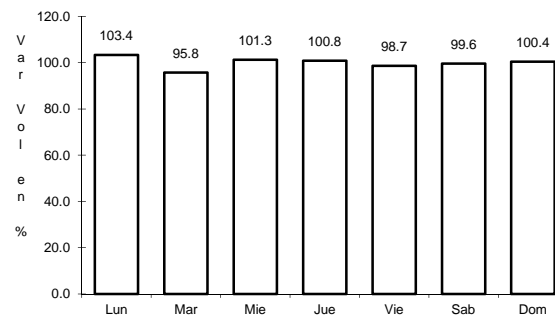
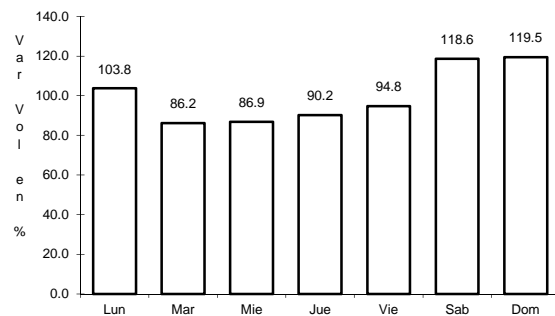
Km: 0.00 Tipo: 3 Sent: 2

Km: 154.00 Tipo: 1 Sent: 0

3 CARR: La Unión - El Encadenado

CLAVE:

ruta: MEX



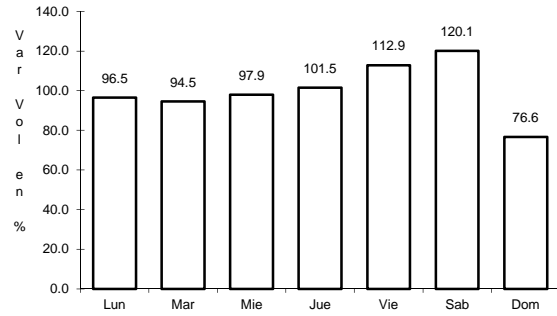
Km: 0.00 Tipo: 3 Sent: 0

Km: 10.00 Tipo: 1 Sent: 0

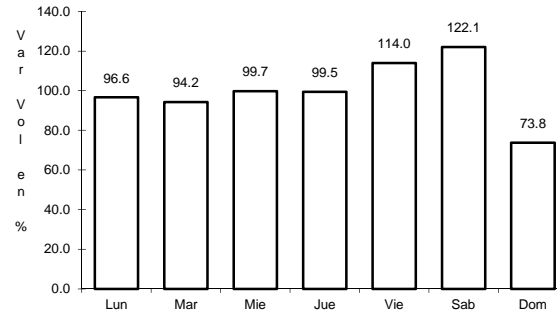
4 CARR: Libramiento de China

CLAVE:

RUTA: MEX-040



Km: 0.00 Tipo: 3 Sent: 0

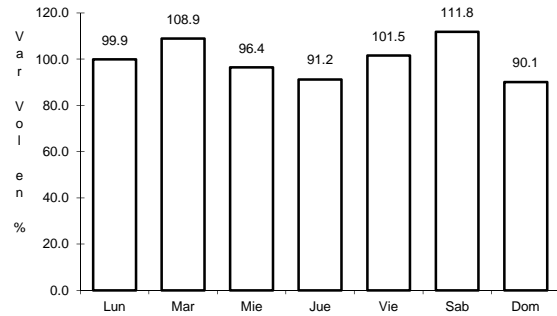


Km: 2.41 Tipo: 1 Sent: 0

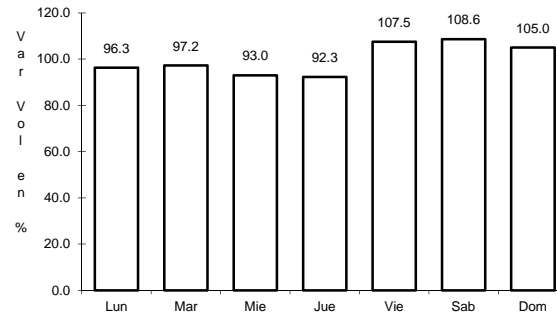
5 CARR: Libramiento de Dr. González

CLAVE: 00127

RUTA: MEX-054



Km: 0.00 Tipo: 3 Sent: 0

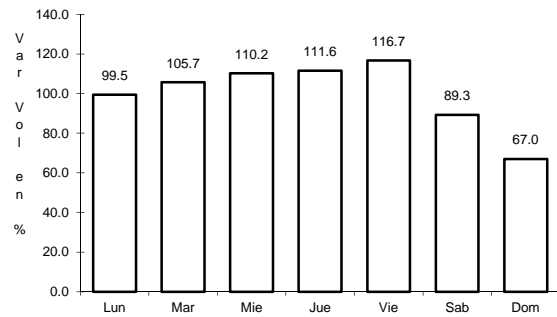


Km: 10.90 Tipo: 1 Sent: 0

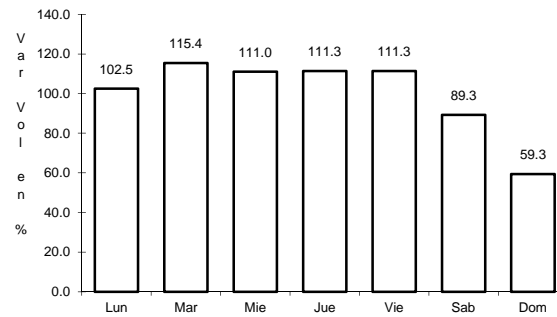
6 CARR: Libramiento Noroeste de Monterrey

CLAVE: 19085

RUTA: MEX-040



Km: 0.00 Tipo: 3 Sent: 1

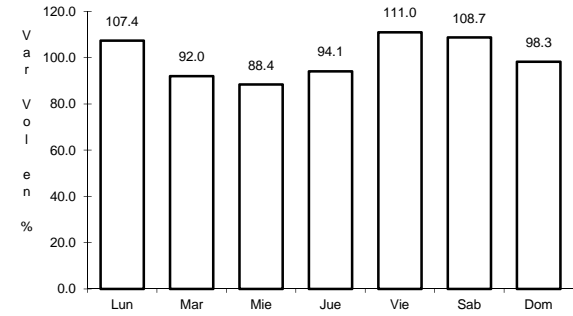
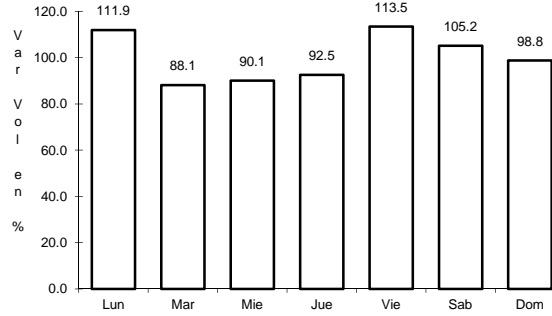
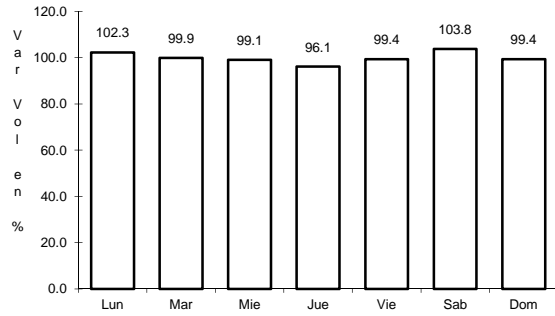


Km: 0.00 Tipo: 3 Sent: 2

7 CARR: Linares - Ent. San Roberto

CLAVE: 19031

RUTA: MEX-058



Km: 0.00 Tipo: 3 Sent: 0

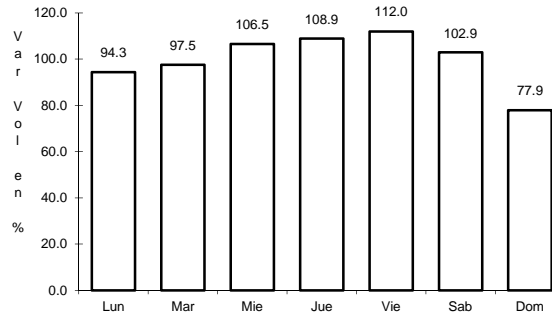
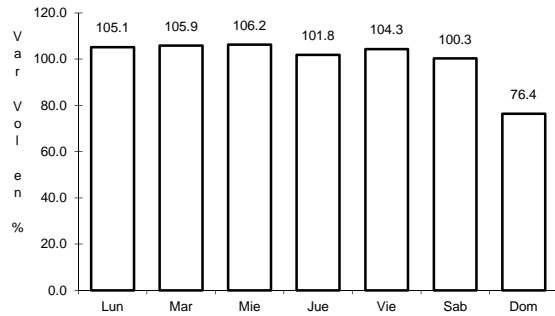
Km: 66.00 Tipo: 1 Sent: 0

Km: 98.00 Tipo: 1 Sent: 0

8 CARR: Matehuala - Ent. Puerto México

CLAVE: 00405

RUTA: MEX-057



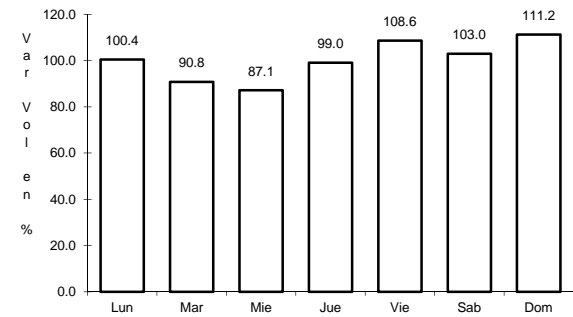
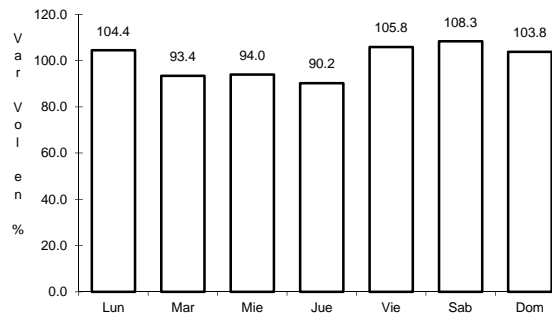
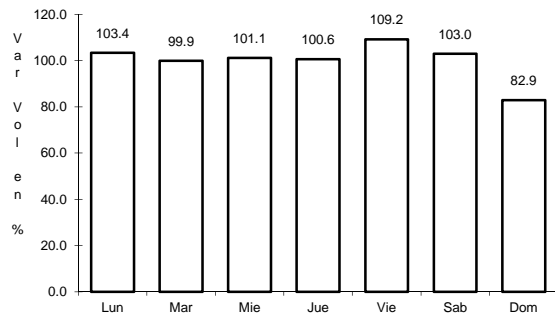
Km: 0.00 Tipo: 3 Sent: 1

Km: 0.00 Tipo: 3 Sent: 2

9 CARR: Montemorelos - China

CLAVE: 19280

RUTA: MEX-035



Km: 0.00 Tipo: 3 Sent: 0

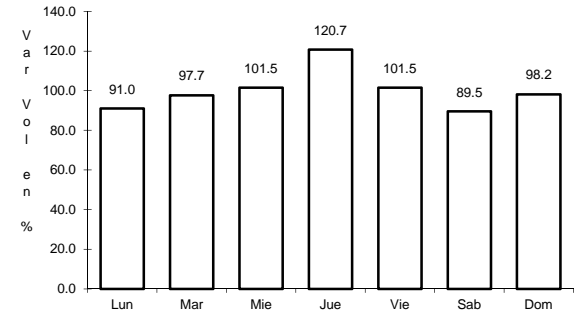
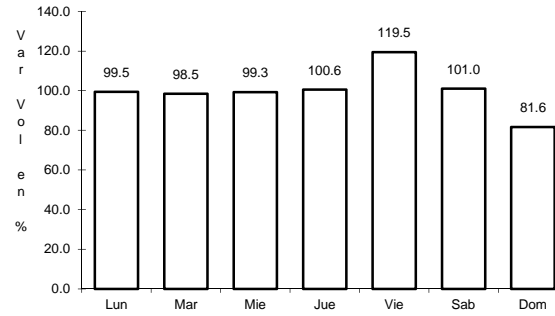
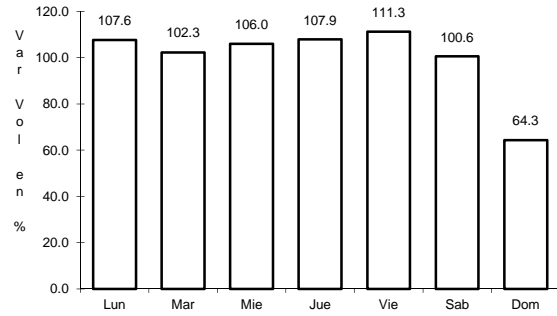
Km: 17.60 Tipo: 3 Sent: 0

Km: 93.00 Tipo: 1 Sent: 0

10 CARR: Monterrey - Castaños

CLAVE: 00128

RUTA: MEX-053



Km: 0.00 Tipo: 3 Sent: 0

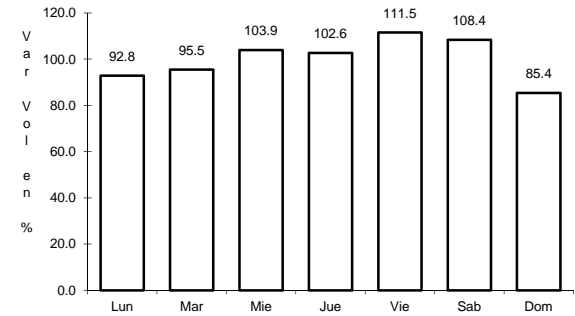
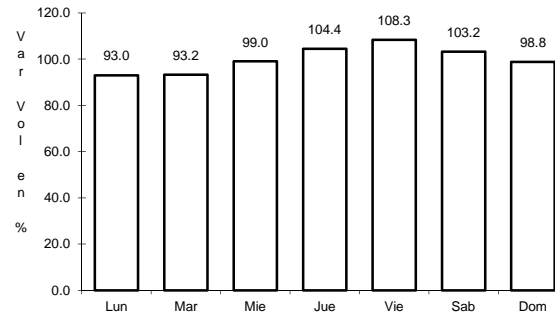
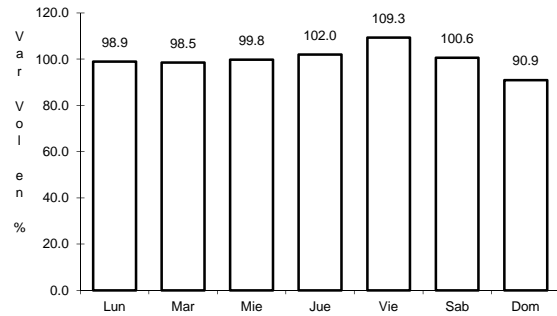
Km: 155.90 Tipo: 1 Sent: 1

Km: 155.90 Tipo: 1 Sent: 2

11 CARR: Monterrey - Mier

CLAVE: 00127

RUTA: MEX-054



Km: 19.12 Tipo: 1 Sent: 1

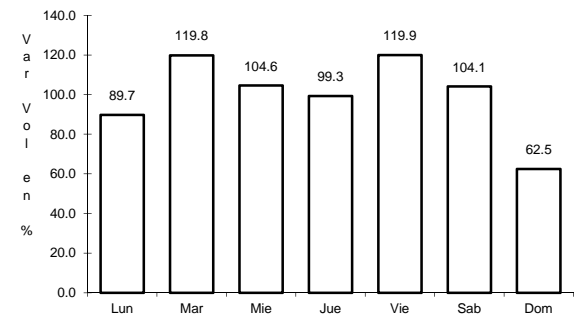
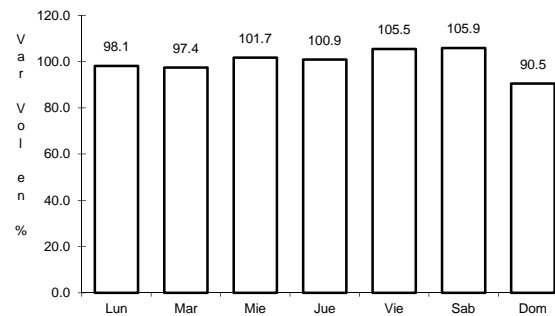
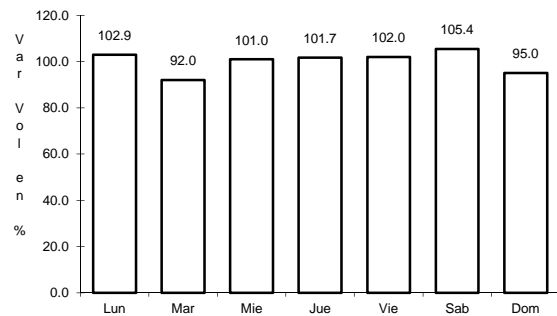
Km: 19.12 Tipo: 1 Sent: 2

Km: 156.21 Tipo: 1 Sent: 0

12 CARR: Monterrey - Nuevo Laredo (Libre)

CLAVE: 00463

RUTA: MEX-085



Km: 12.10 Tipo: 3 Sent: 1

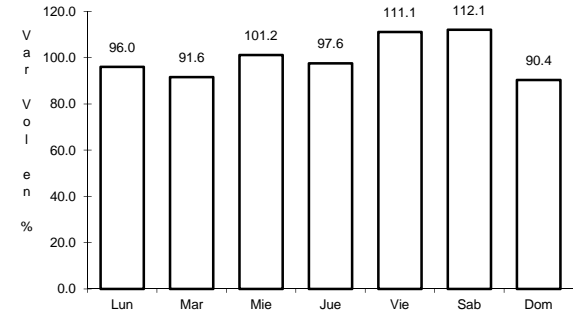
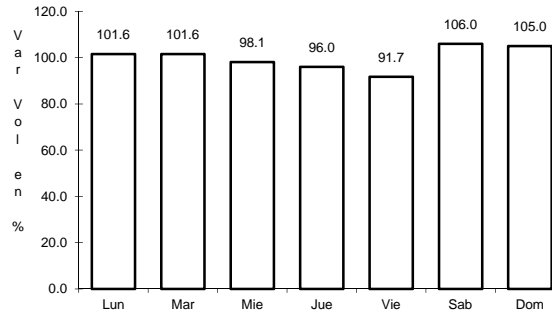
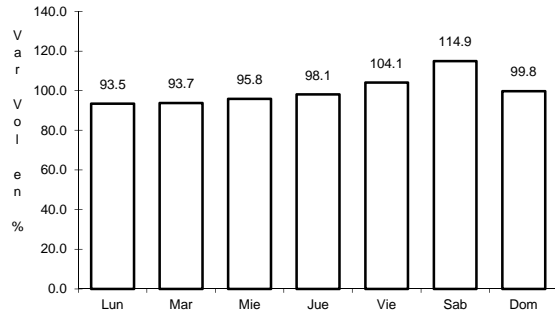
Km: 12.10 Tipo: 3 Sent: 2

Km: 124.40 Tipo: 3 Sent: 0

13 CARR: Monterrey - Reynosa (Libre)

CLAVE: 00088

RUTA: MEX-040



Km: 19.10 Tipo: 1 Sent: 1

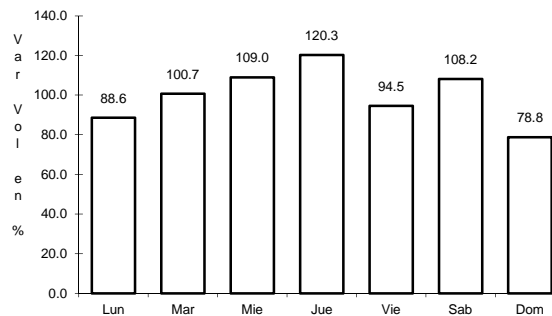
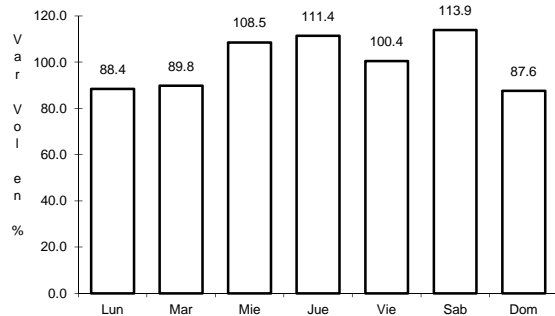
Km: 19.10 Tipo: 1 Sent: 2

Km: 125.00 Tipo: 1 Sent: 0

14 CARR: Paras - Nueva Ciudad Guerrero

CLAVE: 00476

RUTA: MEX-030



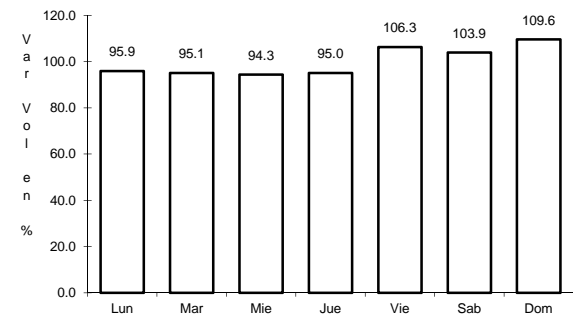
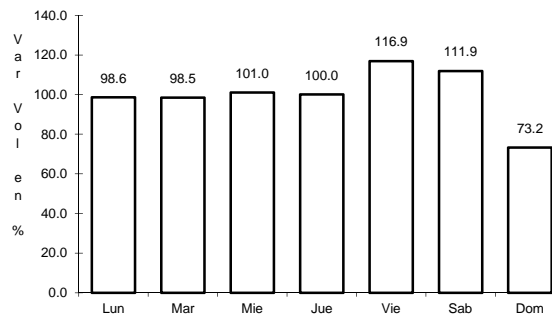
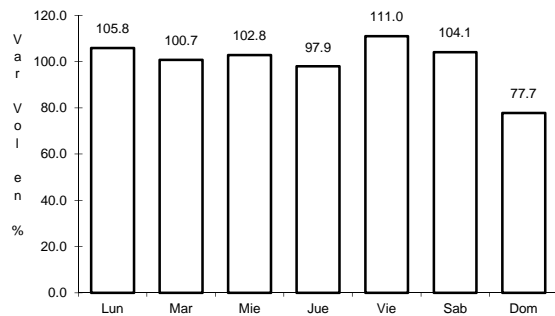
Km: 0.00 Tipo: 3 Sent: 0

Km: 32.00 Tipo: 1 Sent: 0

15 CARR: Piedras Negras - Nuevo Laredo

CLAVE: 00503

RUTA: MEX-002



Km: 0.00 Tipo: 3 Sent: 1

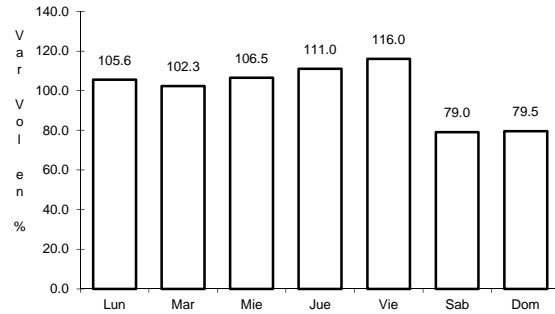
Km: 0.00 Tipo: 3 Sent: 2

Km: 134.00 Tipo: 3 Sent: 0

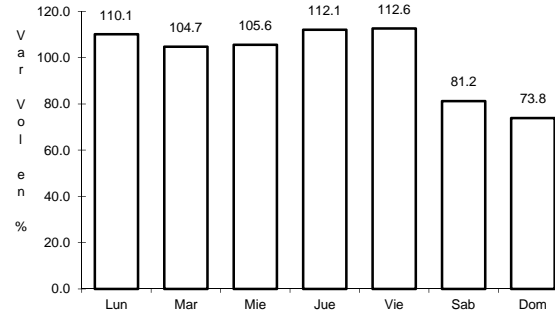
16 CARR: Ramal a Aeropuerto Mariano Escobedo

CLAVE: 19510

RUTA: MEX-054



Km: 0.00 Tipo: 3 Sent: 1

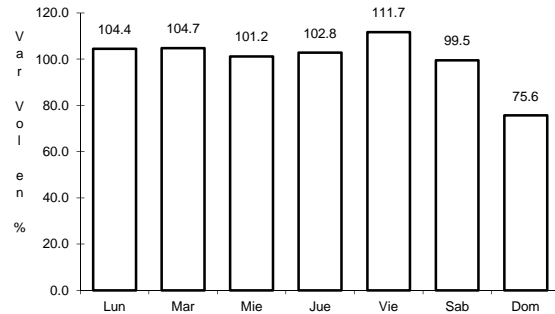


Km: 0.00 Tipo: 3 Sent: 2

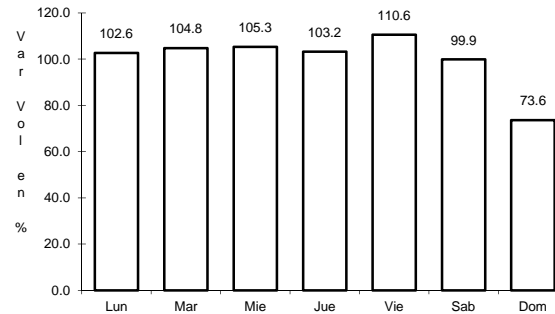
17 CARR: Saltillo - Monterrey

CLAVE: 00087

RUTA: MEX-040



Km: 4.25 Tipo: 3 Sent: 1

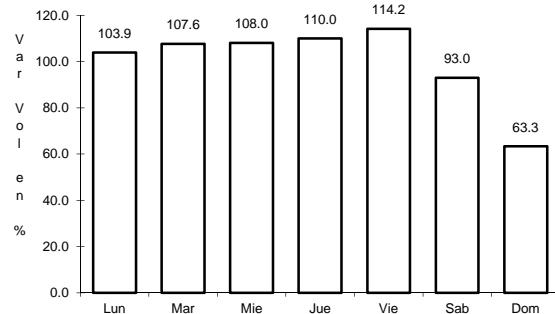


Km: 4.25 Tipo: 3 Sent: 2

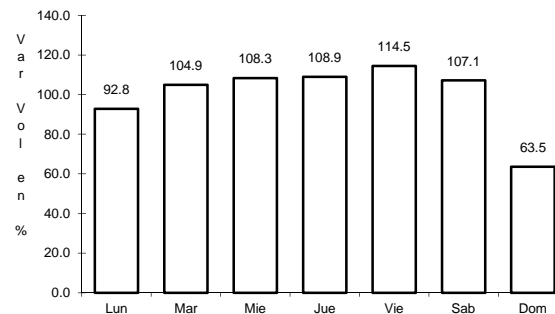
19 CARR: Monterrey - Nuevo Laredo (Cuota)

CLAVE: 19086

RUTA: MEX-085D



Km: 0.00 Tipo: 3 Sent: 1

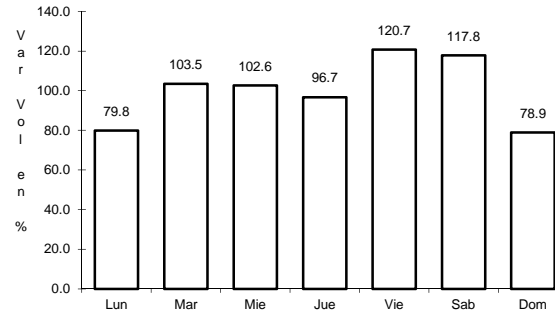
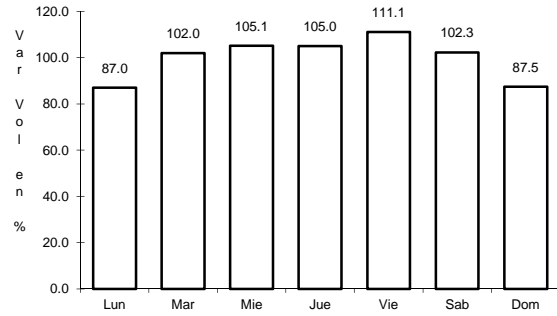


Km: 0.00 Tipo: 3 Sent: 2

20 CARR: Puerto México - La Carbonera (Cuota)

CLAVE: 00115

RUTA: MEX-057D



Km: 224.94

Tipo: 1

Sent: 1

Km: 224.94

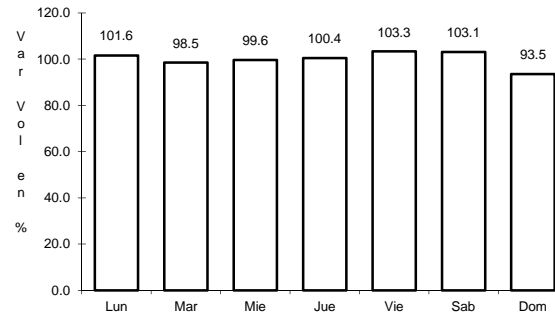
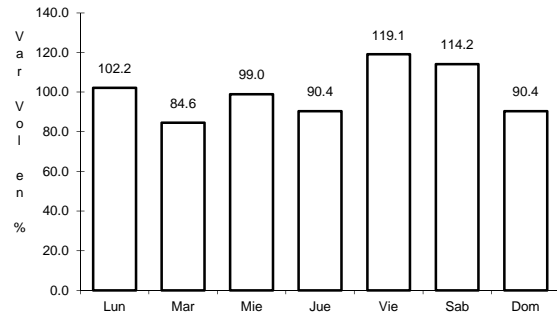
Tipo: 1

Sent: 2

21 CARR: Saltillo - Monterrey (Cuota)

CLAVE: 00087

RUTA: MEX-040D



Km: 46.21

Tipo: 3

Sent: 1

Km: 46.21

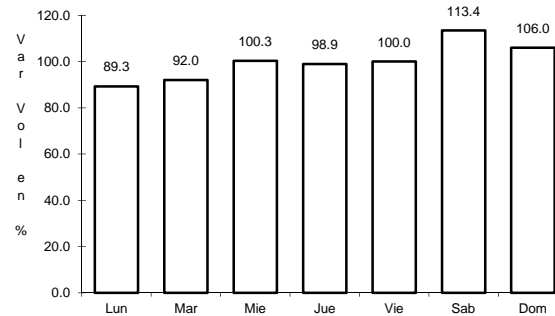
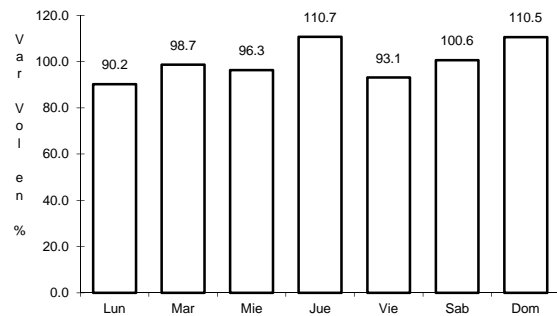
Tipo: 3

Sent: 2

22 CARR: Agualeguas - El Ébano

CLAVE: 19004

RUTA: NL-023



Km: 0.00

Tipo: 3

Sent: 0

Km: 54.00

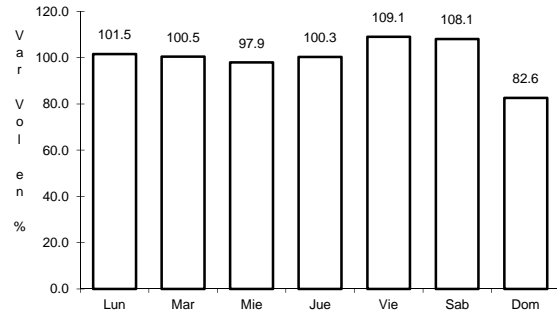
Tipo: 1

Sent: 0

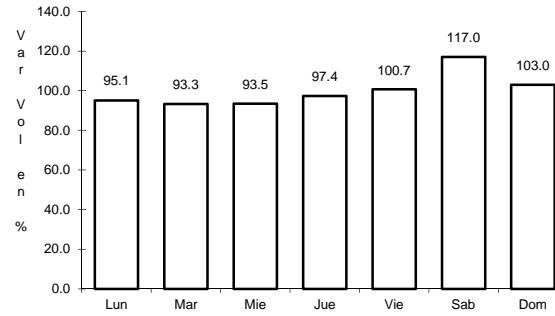
23 CARR: Apodaca - Villa Juárez

CLAVE: 00087

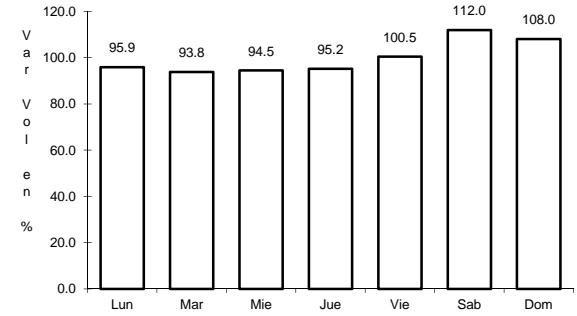
RUTA: NL



Km: 0.00 Tipo: 3 Sent: 0



Km: 16.00 Tipo: 1 Sent: 1

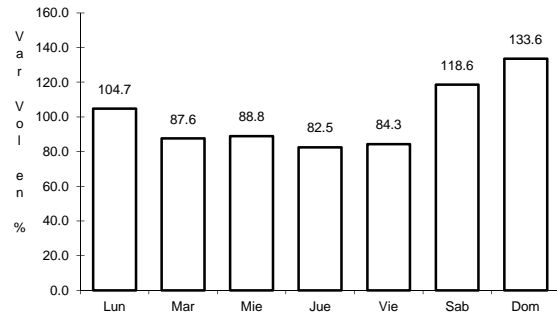


Km: 16.00 Tipo: 1 Sent: 2

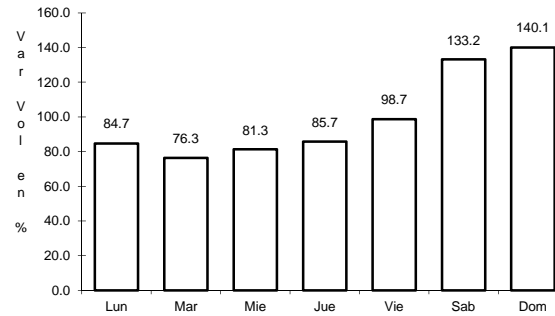
24 CARR: Atongo - Lázarillos

CLAVE:

RUTA: NL



Km: 0.00 Tipo: 3 Sent: 0

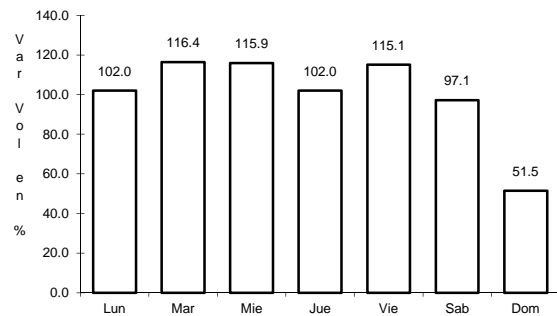


Km: 7.78 Tipo: 1 Sent: 0

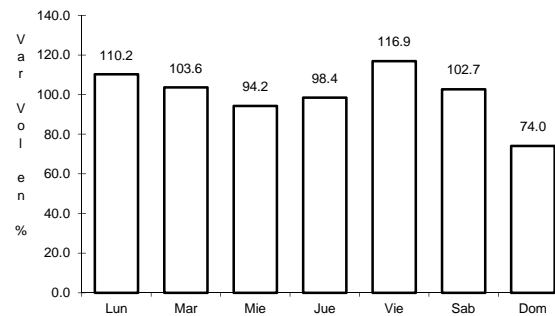
25 CARR: Cadereyta de Jiménez - Doctor González

CLAVE: 19473

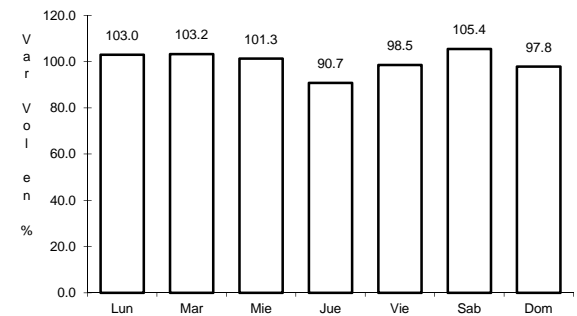
RUTA: NL



Km: 0.00 Tipo: 3 Sent: 0



Km: 18.00 Tipo: 3 Sent: 0

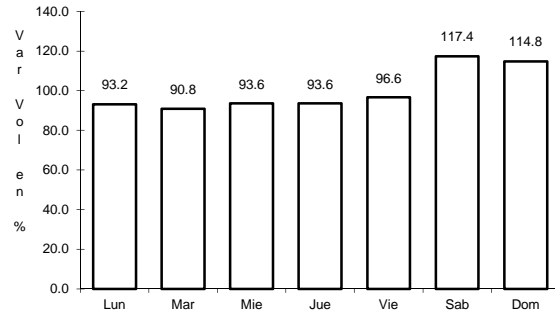


Km: 30.00 Tipo: 1 Sent: 0

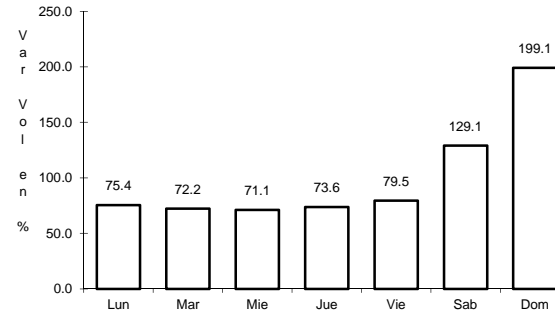
26 CARR: Cd. Benito Juárez - Villa de Santiago

CLAVE: 00087

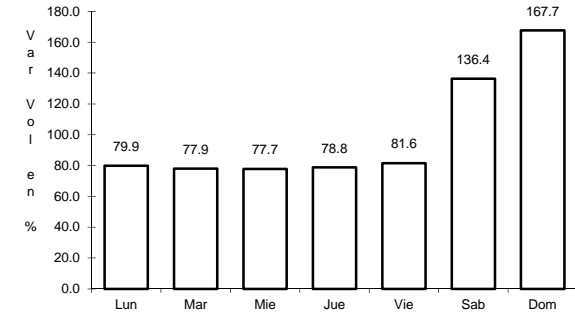
RUTA: NL



Km: 0.00 Tipo: 3 Sent: 0



Km: 23.00 Tipo: 3 Sent: 0

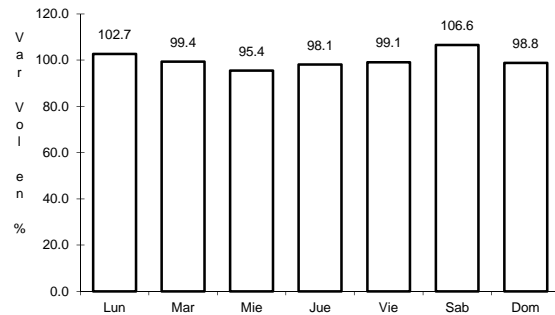


Km: 39.00 Tipo: 1 Sent: 0

27 CARR: China - Méndez

CLAVE: 00191

RUTA: NL-TAM

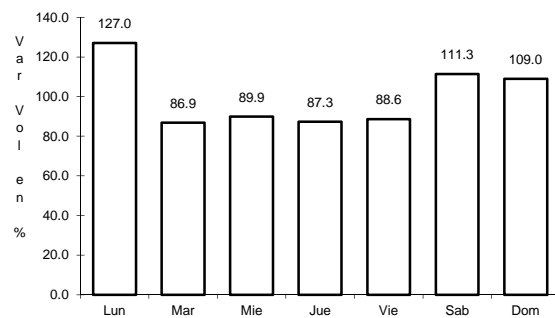


Km: 0.00 Tipo: 3 Sent: 0

28 CARR: Doctor Arroyo - Mier y Noriega

CLAVE: 19088

RUTA: NL-088

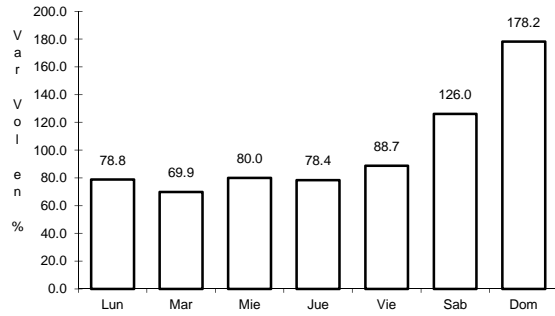


Km: 0.00 Tipo: 3 Sent: 0

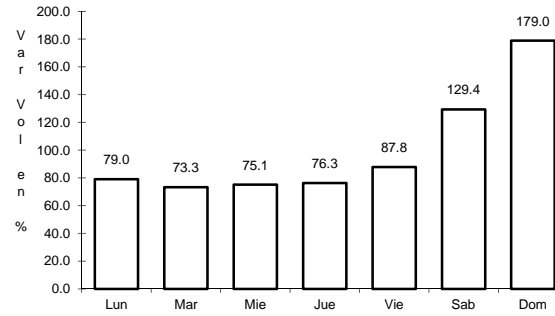
29 CARR: Ent. Hacienda del Cielo - T. Der. Cadereyta

CLAVE:

RUTA: NL



Km: 0.00 Tipo: 3 Sent: 0

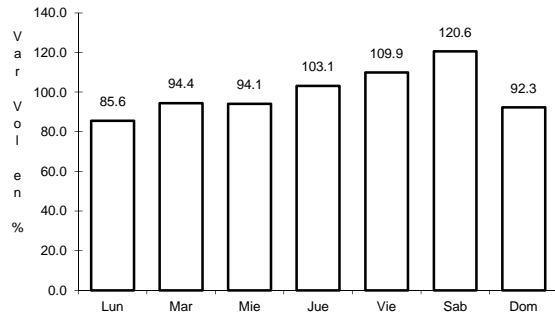


Km: 11.50 Tipo: 1 Sent: 0

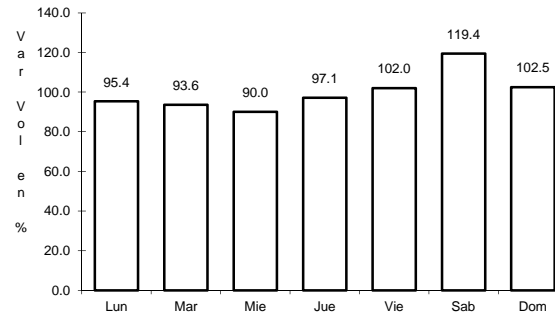
30 CARR: Ent. Huisachito - Nuevo Laredo

CLAVE: 00074

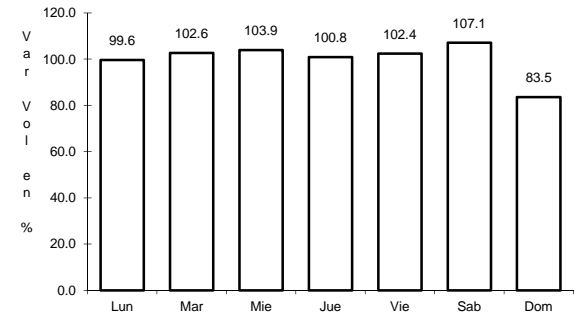
RUTA: NL-001-TAM



Km: 0.00 Tipo: 3 Sent: 0



Km: 47.00 Tipo: 1 Sent: 0

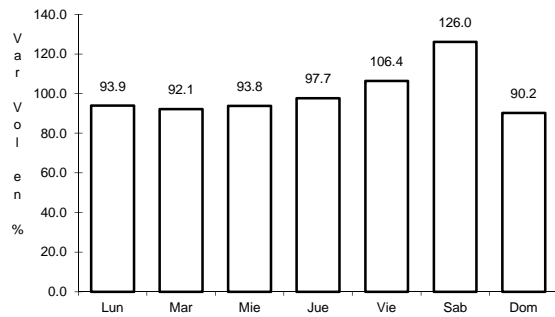


Km: 51.00 Tipo: 1 Sent: 0

31 CARR: Gral. Bravo - Los Aldamas

CLAVE: 19030

RUTA: NL-030

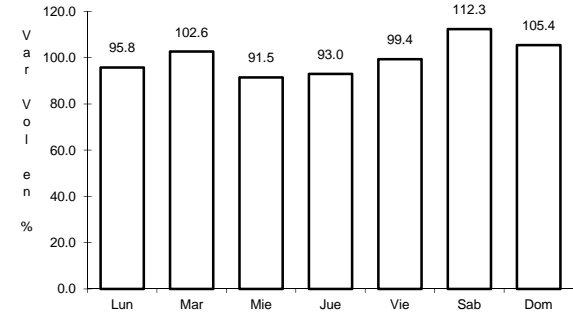
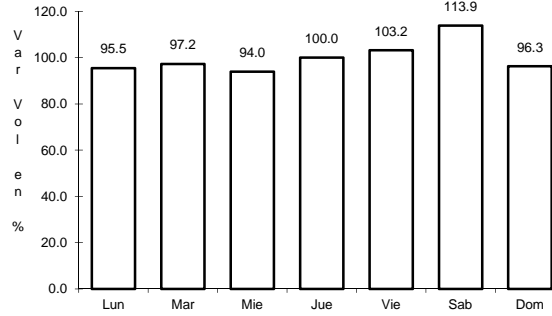
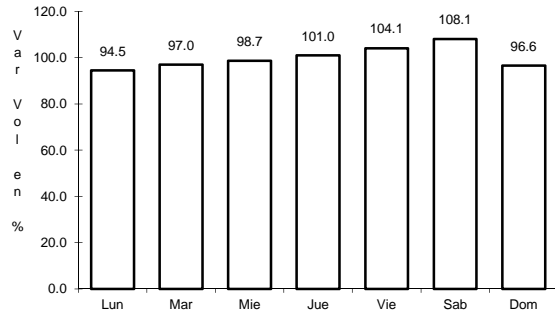


Km: 0.00 Tipo: 3 Sent: 0

32 CARR: Gral. Treviño - Villaldama

CLAVE: 19003

RUTA: NL-003



Km: 0.00 Tipo: 3 Sent: 0

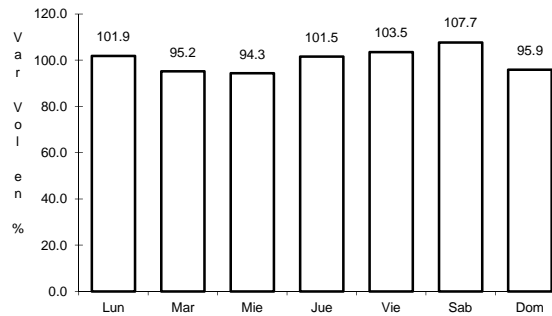
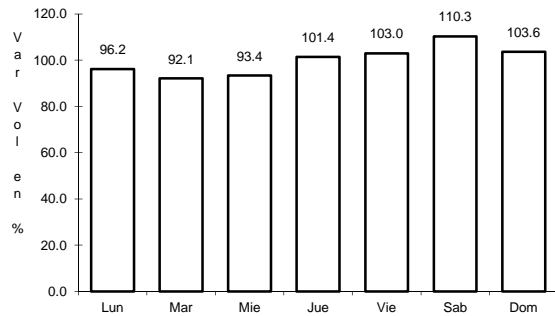
Km: 62.00 Tipo: 1 Sent: 0

Km: 134.00 Tipo: 1 Sent: 0

33 CARR: Hacienda Guadalupe - Higuera

CLAVE: 19006

RUTA: NL-006



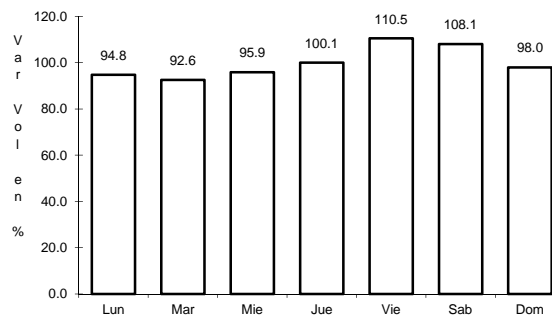
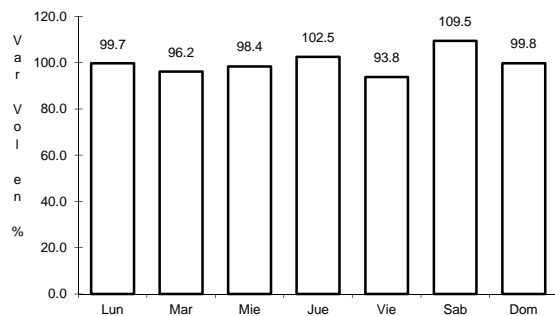
Km: 3.00 Tipo: 1 Sent: 1

Km: 3.00 Tipo: 1 Sent: 2

34 CARR: Libramiento de Linares

CLAVE: 19506

RUTA: NL



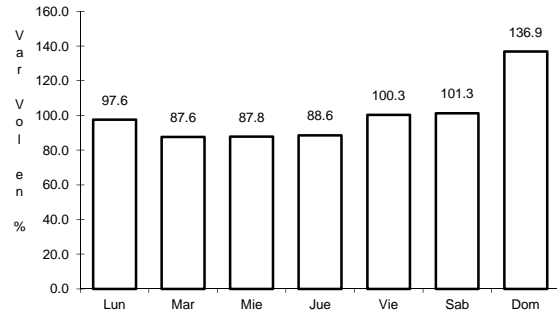
Km: 0.00 Tipo: 3 Sent: 0

Km: 2.00 Tipo: 3 Sent: 0

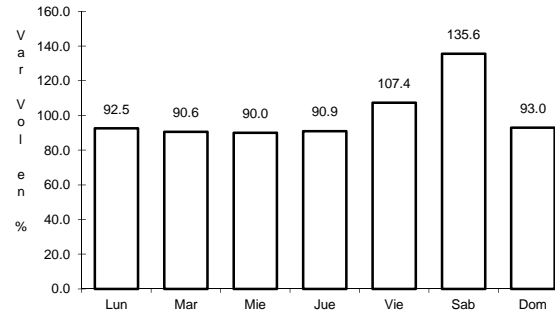
35 CARR: Libramiento de Montemorelos

CLAVE: 19492

RUTA: NL



Km: 0.00 Tipo: 3 Sent: 1

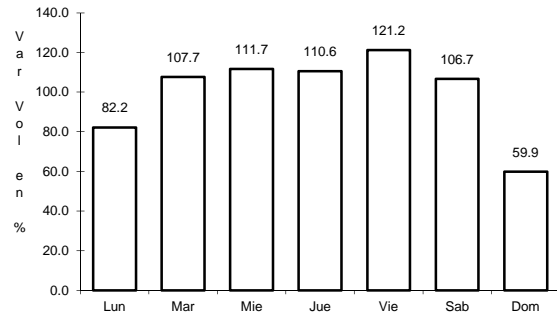


Km: 0.00 Tipo: 3 Sent: 2

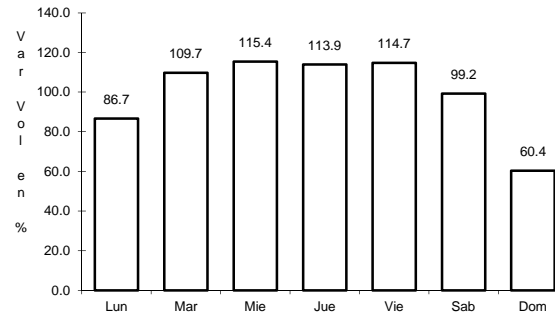
36 CARR: Libramiento de Sabinas Hidalgo

CLAVE: 19492

RUTA: NL



Km: 0.00 Tipo: 3 Sent: 0

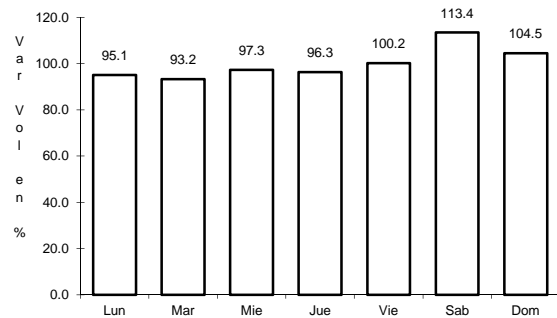


Km: 9.20 Tipo: 1 Sent: 0

37 CARR: Libramiento Poniente de Cadereyta

CLAVE: 19085

RUTA: NL

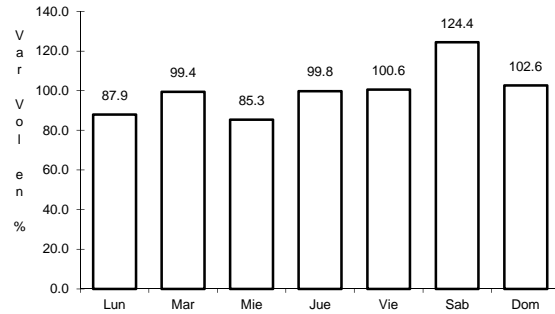


Km: 0.00 Tipo: 3 Sent: 0

38 CARR: Los Guerra - Los Herreras

CLAVE: 19031

RUTA: TAM-NL



Km: 73.00

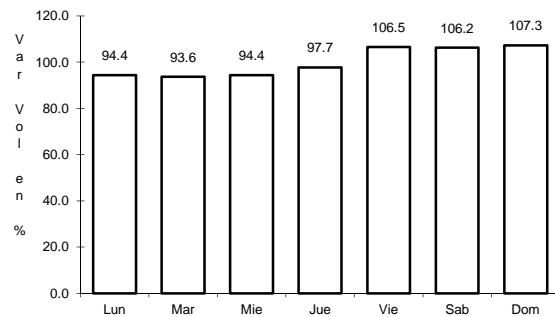
Tipo: 1

Sent: 0

39 CARR: Matehuala - La Poza

CLAVE: 00086

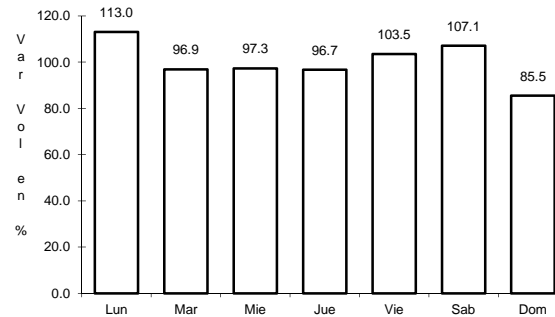
RUTA: SLP-029



Km: 0.00

Tipo: 3

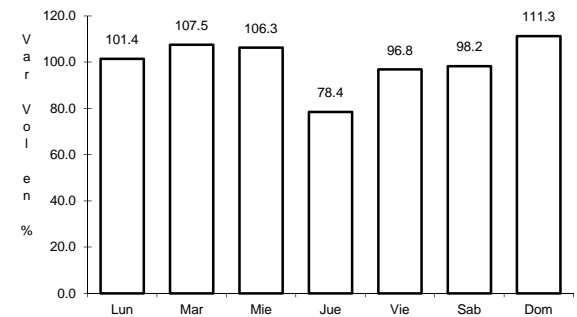
Sent: 0



Km: 49.00

Tipo: 1

Sent: 0



Km: 131.00

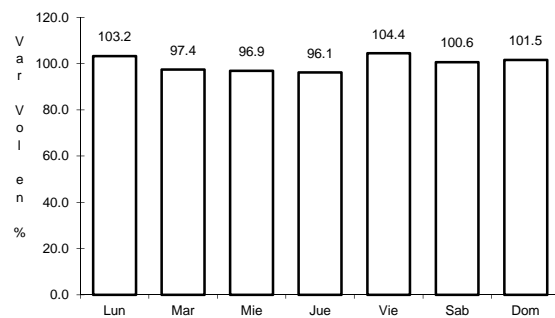
Tipo: 1

Sent: 0

40 CARR: Monclova - Estación Candela

CLAVE: 00501

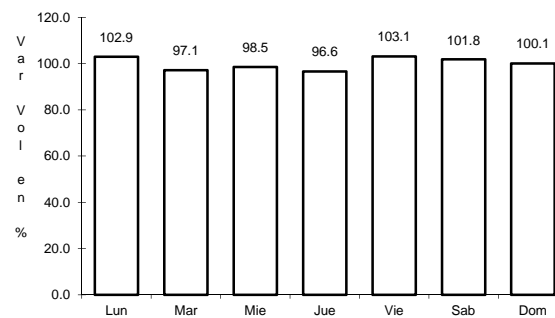
RUTA: COA-030-NL



Km: 5.10

Tipo: 1

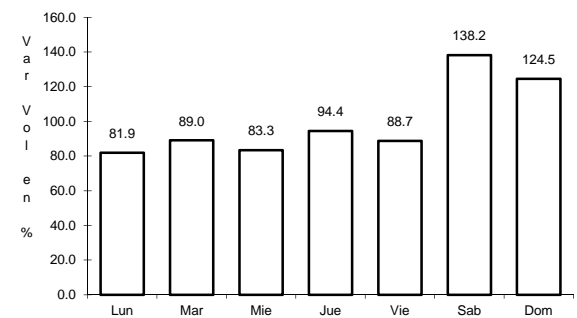
Sent: 1



Km: 5.10

Tipo: 1

Sent: 2



Km: 125.50

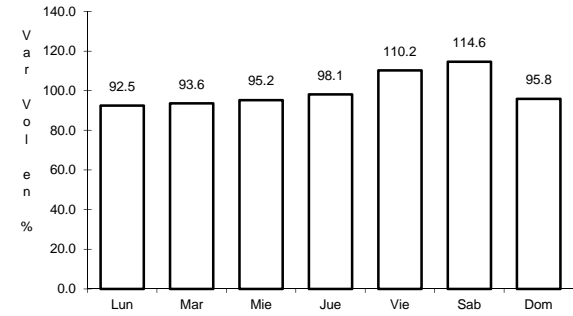
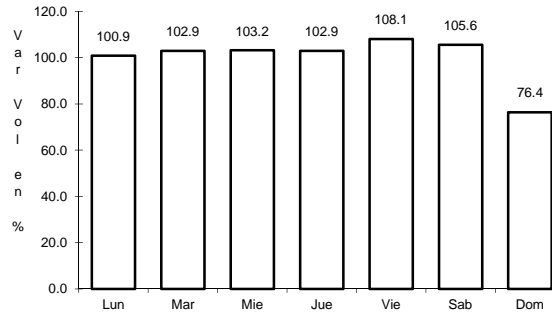
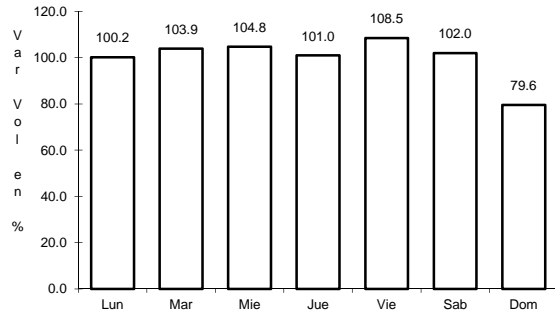
Tipo: 1

Sent: 0

41 CARR: Monterrey - Colombia

CLAVE: 19001

RUTA: NL-001



Km: 0.00 Tipo: 3 Sent: 1

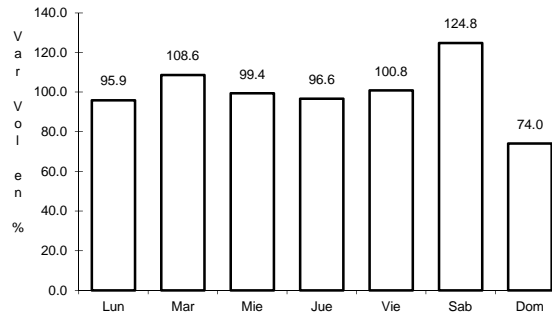
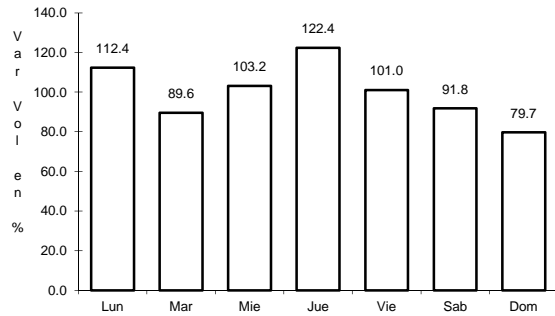
Km: 0.00 Tipo: 3 Sent: 2

Km: 124.04 Tipo: 1 Sent: 0

42 CARR: Palo Alto - Vallecillos

CLAVE: 19036

RUTA: NL



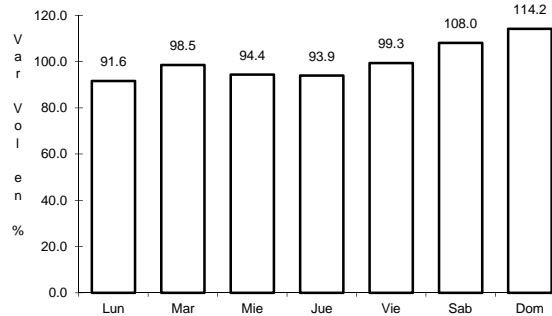
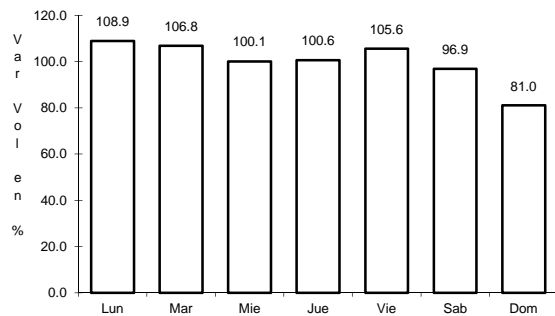
Km: 0.00 Tipo: 3 Sent: 0

Km: 43.00 Tipo: 1 Sent: 0

43 CARR: Peña Blanca - Cd. Camargo

CLAVE: 00102

RUTA: NL-TAM



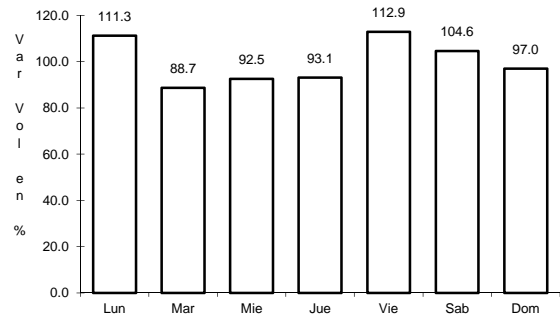
Km: 0.00 Tipo: 3 Sent: 0

Km: 65.00 Tipo: 1 Sent: 0

44 CARR: Ramal a 18 de Marzo

CLAVE: 19475

RUTA: NL



Km: 0.00

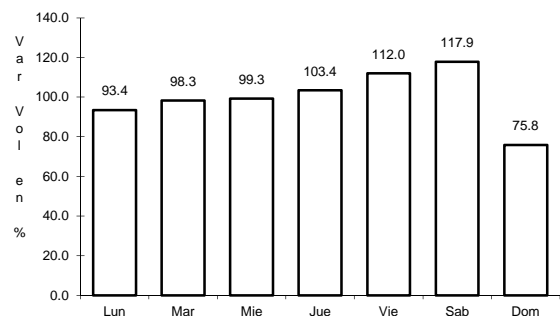
Tipo: 3

Sent: 0

45 CARR: Ramal a Cerralvo

CLAVE: 19013

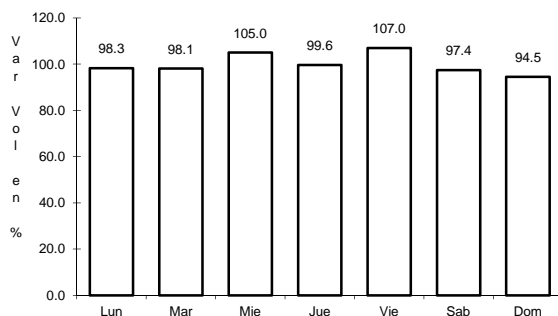
RUTA: NL-013



Km: 0.00

Tipo: 3

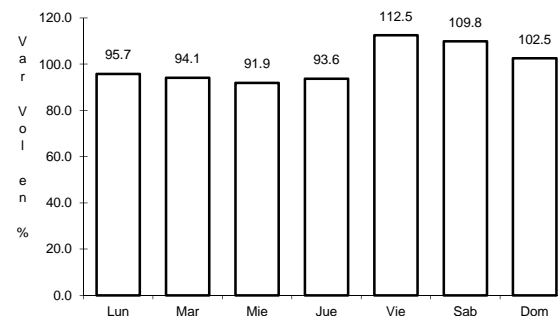
Sent: 0



Km: 21.00

Tipo: 3

Sent: 0



Km: 58.00

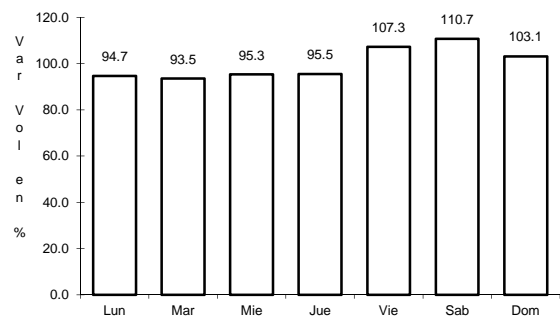
Tipo: 1

Sent: 0

46 CARR: Ramal a Marín

CLAVE: 19007

RUTA: NL



Km: 0.00

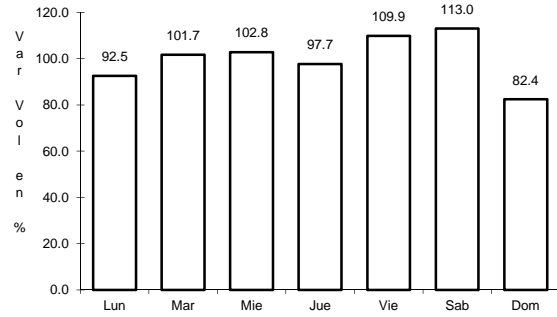
Tipo: 3

Sent: 0

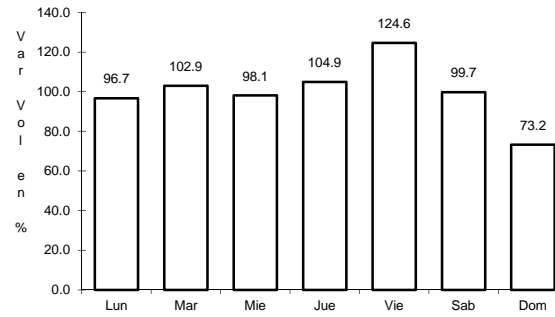
47 CARR: Salinas Victoria - Ciénega de Flores

CLAVE: 19007

RUTA: NL



Km: 0.00 Tipo: 3 Sent: 0

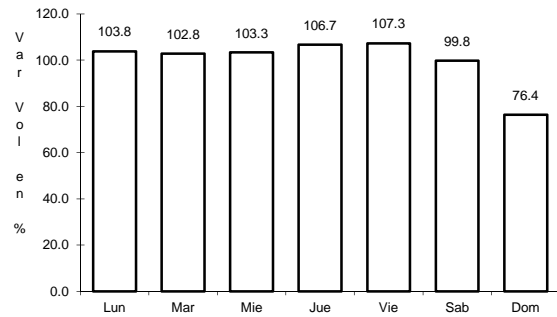


Km: 6.00 Tipo: 1 Sent: 0

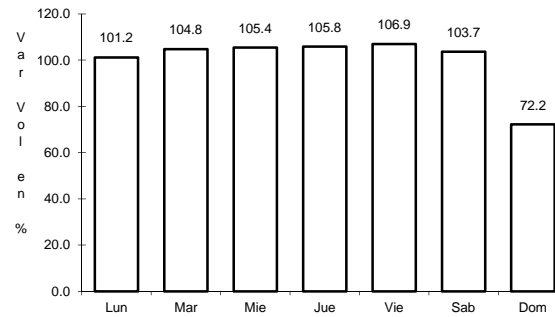
48 CARR: Santa Rosa - Mezquital

CLAVE: 00087

RUTA: NL



Km: 0.00 Tipo: 3 Sent: 1

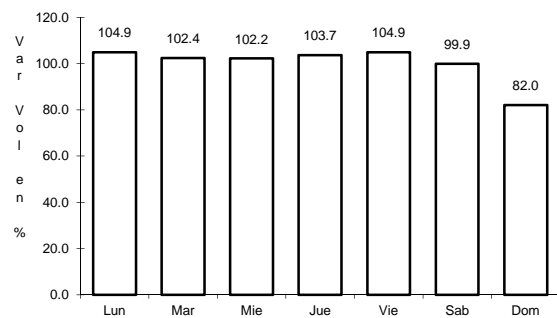


Km: 0.00 Tipo: 3 Sent: 2

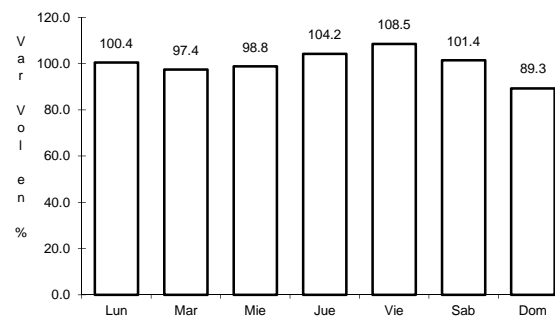
49 CARR: Santa Rosa - Salinas Victoria

CLAVE: 19037

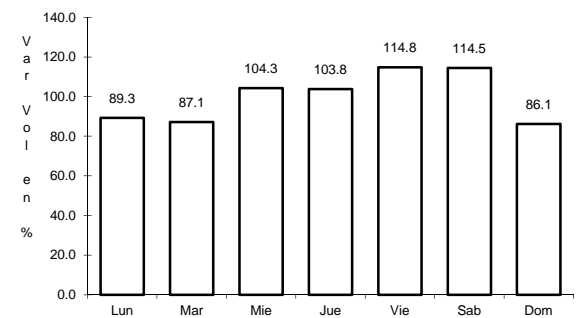
RUTA: NL



Km: 0.00 Tipo: 3 Sent: 0



Km: 13.85 Tipo: 1 Sent: 1

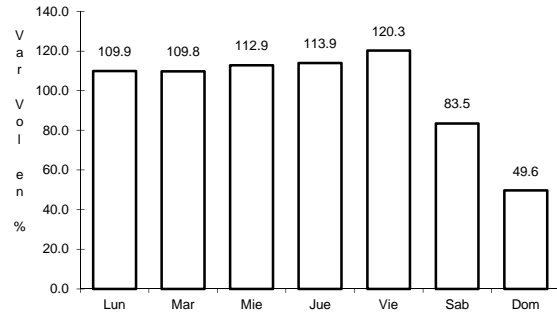


Km: 13.85 Tipo: 1 Sent: 2

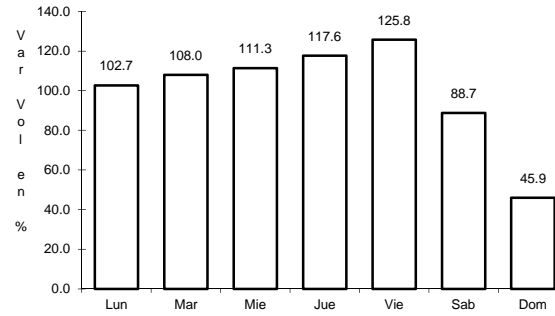
50 CARR: Aeropuerto de Monterrey (Cuota)

CLAVE:

RUTA: NL-D



Km: 4.10 Tipo: 3 Sent: 1

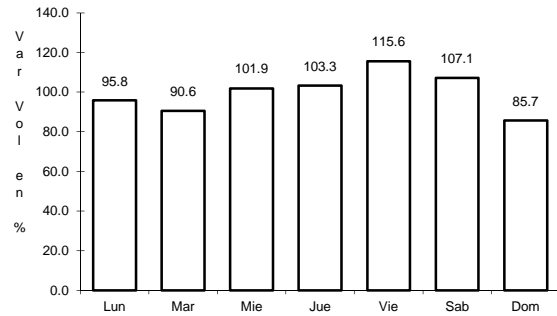


Km: 4.10 Tipo: 3 Sent: 2

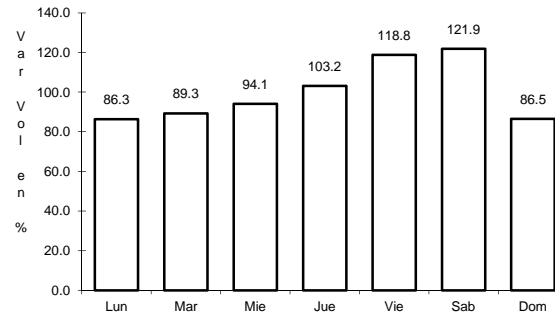
51 CARR: Anillo Periférico de Monterrey (Cuota)

CLAVE: 19004

RUTA: NL-D



Km: 0.00 Tipo: 3 Sent: 1

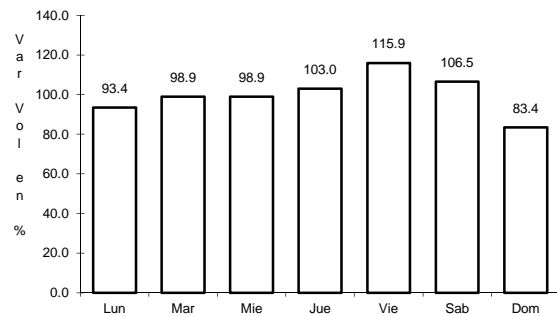


Km: 0.00 Tipo: 3 Sent: 2

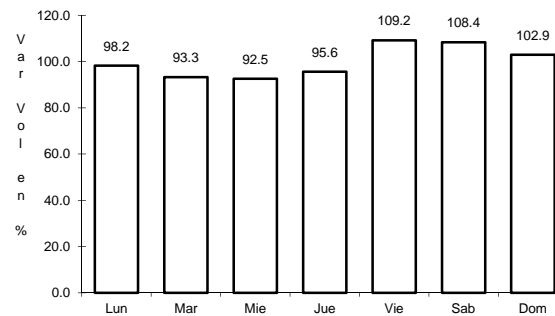
52 CARR: Monterrey - Cadereyta (Cuota)

CLAVE: 19281

RUTA: NL-D



Km: 12.50 Tipo: 1 Sent: 1



Km: 12.50 Tipo: 1 Sent: 2

