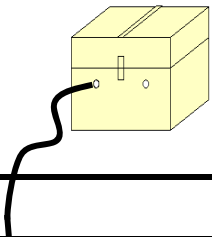


18 NAYARIT

SECRETARÍA DE COMUNICACIONES Y TRANSPORTES
DIRECCIÓN GENERAL DE SERVICIOS TÉCNICOS



- ① --- Número Índice
- Red Federal Libre
- Red Federal Cuota
- Red Federal Integrada por Tramos Libres y de Cuota
- Red Estatal Libre
- Red Estatal Cuota
- Carreteras Integradas por Tramos Federales y Estatales



NAYARIT

NO. INDICE	CARRETERA	RUTA
---RED FEDERAL LIBRE---		
1	Crucero de San Blas - San Blas	MEX-015
2	Ent. Acaponeta - El Novillero	MEX-015
3	Ent. Santiago Ixcuintla - Playa Los Corchos	MEX-015
4	Guadalajara - Tepic	MEX-015
5	Libramiento de Tepic	MEX-015
6	Peñitas - Tuxpan	MEX-015
7	Ramal a Acaponeta	MEX-015
8	Ramal a Estación Nanchi	MEX-015
9	Ramal a Estación Ruíz	MEX-015
10	Ramal a La Laguna de Santa María	MEX-015
11	Ramal a Mecatán	MEX-015
12	Ramal a Nuevo Aeropuerto de Tepic	MEX-015
13	Ramal a Punta Mita	MEX-200
14	Ramal a Santa Cruz	MEX-015
15	Santa Cruz - San Blas	MEX-015
16	Tepic - Ixtapan de La Concepción	MEX-015
17	Tepic - Mazatlán	MEX-015
18	Tepic - Presa Aguamilpa	MEX-015
19	Tepic - Puerto Vallarta	MEX-200
---RED FEDERAL DE CUOTA---		
20	Chapalilla - Compostela (Cuota)	MEX-068D
21	Guadalajara - Tepic (Cuota)	MEX-015D
22	Tepic - Villa Unión (cuota)	MEX-015D
---RED ESTATAL LIBRE---		
23	El Carrizo - La Batanga	NAY-078
24	Navarrete - Sauta	NAY-013
25	Ramal a Amado Nervo	NAY
26	Ramal a Bellavista	NAY-059
27	Ramal a El Colomo	NAY
28	Ramal a Estación Yago	NAY
29	Ramal a Ixtapan de La Concepción	NAY
30	Ramal a Milpas Viejas	NAY
31	Ramal a Villa Hidalgo	NAY
32	Ramal a Volcán del Ceboruco	NAY
---CARRETERAS INTEGRADAS POR TRAMOS FEDERALES Y ESTATALES---		
33	Tepic - Francisco I. Madero	NAY-MEX

NAYARIT

1 CARR: Crucero de San Blas - San Blas

CLAVE: 18229

RUTA: MEX-015

AÑO: 2015

LUGAR	ESTACION				CLASIFICACION VEHICULAR EN PORCIENTO													COORDENADAS		
	KM	TE	SC	TDPA	M	A	B	C2	C3	T3S2	T3S3	T3S2R4	OTROS	A	B	C	K'	D	LATITUD	LONGITUD
T. C. Tepic - Mazatlán	0.00	3	0	2519	1.9	89.6	1.4	5.1	1.4	0.3	0.1	0.1	0.1	91.5	1.4	7.1	0.069	0.503	21.691497	-105.054965
Navarrete	11.00	3	0	2798	1.2	84.9	1.4	7.0	1.8	2.0	0.7	0.9	0.1	86.1	1.4	12.5	0.088	0.504	21.647299	-105.120580
San Blas	36.00	1	0	3537	0.4	93.4	0.8	4.3	0.5	0.5	0.1	0.0	0.0	93.8	0.8	5.4	0.126	0.521	21.544696	-105.269292

2 CARR: Ent. Acaponeta - El Novillero

CLAVE: 18023

RUTA: MEX-015

AÑO: 2015

LUGAR	ESTACION				CLASIFICACION VEHICULAR EN PORCIENTO													COORDENADAS		
	KM	TE	SC	TDPA	M	A	B	C2	C3	T3S2	T3S3	T3S2R4	OTROS	A	B	C	K'	D	LATITUD	LONGITUD
T. C. Tepic - Mazatlán	0.00	3	0	5378	0.7	76.5	2.9	11.0	3.8	3.1	0.9	0.6	0.5	77.2	2.9	19.9	0.087	0.500	22.486398	-105.385500
Tecuala	13.00	1	0	5991	2.5	85.4	2.6	8.3	1.0	0.1	0.0	0.0	0.1	87.9	2.6	9.5	0.102	0.515	22.416371	-105.446599
Tecuala	13.00	3	0	4296	5.4	82.9	0.9	9.8	0.8	0.0	0.0	0.0	0.2	88.3	0.9	10.8	0.105	0.503	22.399334	-105.482255
El Novillero	36.00	1	0	1681	9.8	88.2	0.2	0.8	0.6	0.1	0.0	0.0	0.3	98.0	0.2	1.8	0.112	0.525	22.382828	-105.657571

3 CARR: Ent. Santiago Ixcuintla - Playa Los Corchos

CLAVE: 18016

RUTA: MEX-015

AÑO: 2015

LUGAR	ESTACION				CLASIFICACION VEHICULAR EN PORCIENTO													COORDENADAS		
	KM	TE	SC	TDPA	M	A	B	C2	C3	T3S2	T3S3	T3S2R4	OTROS	A	B	C	K'	D	LATITUD	LONGITUD
T. C. Tepic - Mazatlán	0.00	3	1	2772	1.3	86.0	2.1	4.6	4.8	0.6	0.1	0.1	0.4	87.3	2.1	10.6	0.071	0.507	21.851585	-105.156004
T. C. Tepic - Mazatlán	0.00	3	2	2846	1.2	84.5	2.6	4.2	6.7	0.4	0.1	0.1	0.2	85.7	2.6	11.7	0.079	0.507	21.851585	-105.156004
Santiago Ixcuintla	8.00	1	1	4502	4.0	82.9	2.3	5.3	3.9	0.4	0.8	0.4	0.0	86.9	2.3	10.8	0.071	0.502	21.815999	-105.192655
Santiago Ixcuintla	8.00	1	2	4539	3.5	84.8	3.2	4.8	1.8	0.9	0.7	0.3	0.0	88.3	3.2	8.5	0.075	0.502	21.815999	-105.192655
Santiago Ixcuintla	8.00	3	0	5934	4.1	77.8	6.4	10.5	0.7	0.1	0.1	0.2	0.1	81.9	6.4	11.7	0.071	0.501	21.808647	-105.227026
T. Der. Mexcaltitán	17.00	1	0	4819	1.7	93.2	1.2	2.6	0.8	0.3	0.2	0.0	0.0	94.9	1.2	3.9	0.083	0.503	21.773973	-105.270423
T. Der. Mexcaltitán	17.00	3	0	3031	1.8	91.2	1.3	3.5	1.7	0.0	0.4	0.0	0.1	93.0	1.3	5.7	0.092	0.501	21.770823	-105.274755
Playa Los Corchos	39.00	1	0	920	1.7	95.6	0.3	1.8	0.4	0.2	0.0	0.0	0.0	97.3	0.3	2.4	0.098	0.502	21.697496	-105.449012

4 CARR: Guadalajara - Tepic

CLAVE: 00031

RUTA: MEX-015

AÑO: 2015

LUGAR	ESTACION				CLASIFICACION VEHICULAR EN PORCIENTO													COORDENADAS		
	KM	TE	SC	TDPA	M	A	B	C2	C3	T3S2	T3S3	T3S2R4	OTROS	A	B	C	K'	D	LATITUD	LONGITUD
Guadalajara	0.00																			
T. Der. Base Aérea No. 2	8.30	3	1	34196	1.2	81.1	2.4	7.0	1.9	3.8	1.4	0.9	0.3	82.3	2.4	15.3	0.093	0.503	20.712795	-103.469518
T. Der. Base Aérea No. 2	8.30	3	2	33744	1.0	79.2	2.6	8.2	2.1	4.2	1.5	0.9	0.3	80.2	2.6	17.2	0.079	0.503	20.711889	-103.469212
T. Izq. La Primavera	20.50	1	1	21572	1.6	75.6	3.5	9.3	2.3	4.6	1.5	1.3	0.3	77.2	3.5	19.3	0.069	0.503	20.728376	-103.552645
T. Izq. La Primavera	20.50	1	2	21352	1.2	72.1	3.7	11.2	2.7	5.6	1.7	1.5	0.3	73.3	3.7	23.0	0.071	0.503	20.728052	-103.551934

NAYARIT

4 CARR : Guadalajara - Tepic

CLAVE: 00031

RUTA: MEX-015

AÑO : 2015

LUGAR	ESTACION				CLASIFICACION VEHICULAR EN PORCIENTO													COORDENADAS		
	KM	TE	SC	TDPA	M	A	B	C2	C3	T3S2	T3S3	T3S2R4	OTROS	A	B	C	K'	D	LATITUD	LONGITUD
El Arenal	36.20	1	1	7126	1.9	77.5	1.5	10.4	3.0	4.3	1.2	0.1	0.1	79.4	1.5	19.1	0.067	0.520	20.769362	-103.681353
El Arenal	36.20	1	2	6571	2.1	75.3	1.6	11.7	3.1	4.7	1.3	0.1	0.1	77.4	1.6	21.0	0.074	0.520	20.769367	-103.681367
Tequila	57.50	3	0	7380	3.3	68.6	2.4	11.5	3.1	8.0	2.0	0.3	0.8	71.9	2.4	25.7	0.070	0.522	20.902144	-103.835338
Magdalena	76.80	3	0	5158	3.2	74.6	1.2	12.0	2.4	4.8	1.2	0.2	0.4	77.8	1.2	21.0	0.074	0.500	20.921639	-103.995742
Lim. Edos. Term. Jal. Ppia. Nay.	123.09																			
Ixtlán del Río	138.84	1	0	2306	3.6	80.3	3.2	6.1	2.7	3.2	0.6	0.0	0.3	83.9	3.2	12.9	0.083	0.551	21.032611	-104.349694
Ixtlán del Río	138.84	3	0	7684	3.4	85.0	3.3	5.7	1.1	1.0	0.2	0.1	0.2	88.4	3.3	8.3	0.088	0.539	21.037222	-104.392944
Ahuacatlán	152.00	1	0	8892	2.1	72.5	6.7	8.3	4.0	4.9	0.9	0.1	0.5	74.6	6.7	18.7	0.065	0.511	21.052503	-104.472917
Ahuacatlán	152.00	3	0	6774	1.2	71.0	5.4	9.4	4.9	5.9	1.2	0.2	0.8	72.2	5.4	22.4	0.065	0.523	21.059389	-104.500056
T. Izq. Amado Nervo	167.32	1	0	5669	2.2	66.8	6.1	8.5	6.7	7.5	1.4	0.2	0.6	69.0	6.1	24.9	0.067	0.540	21.129006	-104.601611
T. Izq. Compostela	175.50	1	0	7145	1.0	70.5	6.8	9.1	4.8	5.5	1.3	0.4	0.6	71.5	6.8	21.7	0.117	0.513	21.190000	-104.637833
T. Izq. Compostela	175.50	3	0	4916	2.2	76.1	3.6	8.4	4.9	3.3	1.0	0.5	0.0	78.3	3.6	18.1	0.074	0.504	21.195233	-104.644602
T. Der. Santa María del Oro	196.00	1	0	5434	1.9	66.3	7.0	12.8	7.1	1.5	1.6	1.1	0.7	68.2	7.0	24.8	0.076	0.506	21.324444	-104.669889
T. Der. Santa María del Oro	196.00	3	0	4604	1.4	73.6	2.4	8.7	4.3	7.1	1.9	0.6	0.0	75.0	2.4	22.6	0.082	0.501	21.328139	-104.671056
T. Izq. Aeropuerto de Tepic	215.68	1	0	9130	0.6	78.1	2.9	5.7	6.0	5.2	1.1	0.1	0.3	78.7	2.9	18.4	0.072	0.510	21.441056	-104.804333
San Cayetano	215.90	3	0	14266	1.8	82.7	2.1	5.9	3.8	2.8	0.6	0.1	0.2	84.5	2.1	13.4	0.071	0.519	21.454820	-104.821267
T. Izq. Libramiento de Tepic	219.10	1	1	15611	0.5	76.6	4.3	6.5	4.9	4.9	0.8	1.2	0.3	77.1	4.3	18.6	0.063	0.511	21.467933	-104.840929
T. Izq. Libramiento de Tepic	219.10	1	2	14940	1.2	75.7	4.6	6.6	4.7	4.8	0.9	1.3	0.2	76.9	4.6	18.5	0.068	0.511	21.467933	-104.840929
T. Izq. Libramiento de Tepic	219.10	3	1	17017	1.0	84.1	3.0	6.0	4.1	1.1	0.2	0.3	0.2	85.1	3.0	11.9	0.062	0.536	21.470306	-104.847861
T. Izq. Libramiento de Tepic	219.10	3	2	14720	0.8	84.0	3.0	6.1	4.2	1.2	0.2	0.4	0.1	84.8	3.0	12.2	0.070	0.536	21.470306	-104.847861
Tepic	224.80	1	1	20988	1.4	83.1	2.1	7.8	2.0	1.2	1.5	0.5	0.4	84.5	2.1	13.4	0.068	0.507	21.471804	-104.852535
Tepic	224.80	1	2	20392	1.6	81.6	2.2	8.6	2.1	1.4	1.5	0.6	0.4	83.2	2.2	14.6	0.070	0.507	21.471804	-104.852535

5 CARR : Libramiento de Tepic

CLAVE: 18232

RUTA: MEX-015

AÑO : 2015

LUGAR	ESTACION				CLASIFICACION VEHICULAR EN PORCIENTO													COORDENADAS		
	KM	TE	SC	TDPA	M	A	B	C2	C3	T3S2	T3S3	T3S2R4	OTROS	A	B	C	K'	D	LATITUD	LONGITUD
T. C. Guadalajara - Tepic	0.00																			
X. C. Tepic - Puerto Vallarta	5.00	1	1	29673	1.9	88.0	1.4	3.2	2.3	1.9	0.6	0.5	0.2	89.9	1.4	8.7	0.083	0.505	21.469537	-104.886434
X. C. Tepic - Puerto Vallarta	5.00	1	2	30234	2.0	88.1	1.2	3.0	2.1	2.2	0.7	0.5	0.2	90.1	1.2	8.7	0.087	0.505	21.469537	-104.886434
T. C. Tepic - Mazatlán	18.80	1	1	15639	0.4	82.3	3.1	4.5	2.8	4.6	0.8	1.2	0.3	82.7	3.1	14.2	0.074	0.524	21.517917	-104.925028
T. C. Tepic - Mazatlán	18.80	1	2	14188	1.1	79.9	3.9	4.5	3.0	5.4	0.8	1.3	0.1	81.0	3.9	15.1	0.075	0.524	21.517917	-104.925028

NAYARIT

6 CARR: Peñitas - Tuxpan

CLAVE: 18019

RUTA: MEX-015

AÑO: 2015

LUGAR	ESTACION				CLASIFICACION VEHICULAR EN PORCIENTO													COORDENADAS		
	KM	TE	SC	TDPA	M	A	B	C2	C3	T3S2	T3S3	T3S2R4	OTROS	A	B	C	K'	D	LATITUD	LONGITUD
Peñitas	0.00	3	0	6005	2.1	79.5	4.8	9.2	1.3	2.1	0.6	0.3	0.1	81.6	4.8	13.6	0.068	0.500	21.942220	-105.227849
Tuxpan	9.00	1	0	6479	6.6	88.9	0.9	2.8	0.5	0.1	0.0	0.0	0.2	95.5	0.9	3.6	0.083	0.511	21.942619	-105.278026

7 CARR: Ramal a Acaponeta

CLAVE: 18038

RUTA: MEX-015

AÑO: 2015

LUGAR	ESTACION				CLASIFICACION VEHICULAR EN PORCIENTO													COORDENADAS		
	KM	TE	SC	TDPA	M	A	B	C2	C3	T3S2	T3S3	T3S2R4	OTROS	A	B	C	K'	D	LATITUD	LONGITUD
T. C. Tepic - Mazatlán	0.00	3	1	2817	6.0	79.0	2.1	12.3	0.6	0.0	0.0	0.0	0.0	85.0	2.1	12.9	0.067	0.529	22.489619	-105.381046
T. C. Tepic - Mazatlán	0.00	3	2	3167	5.6	75.5	2.3	15.4	0.7	0.5	0.0	0.0	0.0	81.1	2.3	16.6	0.075	0.529	22.489619	-105.381046
Acaponeta	3.00																			

8 CARR: Ramal a Estación Nanchi

CLAVE: 18068

RUTA: MEX-015

AÑO: 2015

LUGAR	ESTACION				CLASIFICACION VEHICULAR EN PORCIENTO													COORDENADAS		
	KM	TE	SC	TDPA	M	A	B	C2	C3	T3S2	T3S3	T3S2R4	OTROS	A	B	C	K'	D	LATITUD	LONGITUD
T. C. Tepic - Mazatlán	0.00	3	0	756	9.5	79.8	1.3	3.9	3.9	0.8	0.8	0.0	0.0	89.3	1.3	9.4	0.083	0.532	21.810359	-105.098253
Estación Nanchi	5.00																			

9 CARR: Ramal a Estación Ruíz

CLAVE: 18026

RUTA: MEX-015

AÑO: 2015

LUGAR	ESTACION				CLASIFICACION VEHICULAR EN PORCIENTO													COORDENADAS		
	KM	TE	SC	TDPA	M	A	B	C2	C3	T3S2	T3S3	T3S2R4	OTROS	A	B	C	K'	D	LATITUD	LONGITUD
T. C. Tepic - Mazatlán	0.00	3	0	4523	1.6	82.1	4.3	9.9	1.3	0.1	0.1	0.0	0.6	83.7	4.3	12.0	0.094	0.503	21.935369	-105.190033
Estación Ruíz	5.50	1	0	5770	0.8	88.3	3.7	6.0	1.1	0.1	0.0	0.0	0.0	89.1	3.7	7.2	0.079	0.501	21.943323	-105.160131

10 CARR: Ramal a La Laguna de Santa María

CLAVE: 18005

RUTA: MEX-015

AÑO: 2015

LUGAR	ESTACION				CLASIFICACION VEHICULAR EN PORCIENTO													COORDENADAS		
	KM	TE	SC	TDPA	M	A	B	C2	C3	T3S2	T3S3	T3S2R4	OTROS	A	B	C	K'	D	LATITUD	LONGITUD
T. C. Guadalajara - Tepic	0.00	3	0	2769	0.9	86.1	2.1	4.8	4.5	1.2	0.3	0.0	0.1	87.0	2.1	10.9	0.109	0.511	21.326833	-104.669306
Santa María del Oro	11.50	1	1	1986	1.0	90.1	0.8	7.2	0.9	0.0	0.0	0.0	0.0	91.1	0.8	8.1	0.108	0.501	21.326750	-104.593889
Santa María del Oro	11.50	1	2	1997	0.9	93.9	0.6	3.2	1.2	0.0	0.1	0.0	0.1	94.8	0.6	4.6	0.136	0.501	21.326750	-104.593889
Laguna de Santa María	20.00	1	0	914	0.7	98.0	0.3	0.4	0.3	0.0	0.0	0.0	0.3	98.7	0.3	1.0	0.071	0.504	21.359912	-104.570690

NAYARIT

11 CARR: Ramal a Mecatán

CLAVE: 18010

RUTA: MEX-015

AÑO: 2015

LUGAR	ESTACION				CLASIFICACION VEHICULAR EN PORCIENTO														COORDENADAS	
	KM	TE	SC	TDPA	M	A	B	C2	C3	T3S2	T3S3	T3S2R4	OTROS	A	B	C	K'	D	LATITUD	LONGITUD
T. C. (Tepic - Mazatlán) - Ixtapan de La Concepción	0.00	3	0	1021	0.6	87.5	3.1	7.9	0.3	0.3	0.3	0.0	0.0	88.1	3.1	8.8	0.071	0.511	21.500233	-105.084512
Mecatán	9.00																			

12 CARR: Ramal a Nuevo Aeropuerto de Tepic

CLAVE: 18012

RUTA: MEX-015

AÑO: 2015

LUGAR	ESTACION				CLASIFICACION VEHICULAR EN PORCIENTO														COORDENADAS	
	KM	TE	SC	TDPA	M	A	B	C2	C3	T3S2	T3S3	T3S2R4	OTROS	A	B	C	K'	D	LATITUD	LONGITUD
T. C. Guadalajara - Tepic	0.00	3	0	4451	2.2	88.8	0.6	5.7	2.0	0.4	0.2	0.0	0.1	91.0	0.6	8.4	0.100	0.501	21.445272	-104.819352
Aeropuerto de Tepic	5.00																			

13 CARR: Ramal a Punta Mita

CLAVE: 18020

RUTA: MEX-200

AÑO: 2015

LUGAR	ESTACION				CLASIFICACION VEHICULAR EN PORCIENTO														COORDENADAS	
	KM	TE	SC	TDPA	M	A	B	C2	C3	T3S2	T3S3	T3S2R4	OTROS	A	B	C	K'	D	LATITUD	LONGITUD
T. C. Tepic - Puerto Vallarta	0.00	3	0	12451	2.6	90.3	2.3	4.3	0.4	0.0	0.0	0.0	0.1	92.9	2.3	4.8	0.088	0.507	20.760139	-105.374611
San Ignacio	9.00	3	0	4685	1.7	87.3	1.1	9.1	0.8	0.0	0.0	0.0	0.0	89.0	1.1	9.9	0.094	0.501	20.760193	-105.476186
Punta Mita	18.00																			

14 CARR: Ramal a Santa Cruz

CLAVE: 18030

RUTA: MEX-015

AÑO: 2015

LUGAR	ESTACION				CLASIFICACION VEHICULAR EN PORCIENTO														COORDENADAS	
	KM	TE	SC	TDPA	M	A	B	C2	C3	T3S2	T3S3	T3S2R4	OTROS	A	B	C	K'	D	LATITUD	LONGITUD
T. C. Tepic - Ixtapan de La Concepción	0.00																			
Santa Cruz	1.30	1	0	2130	5.3	89.0	0.4	5.2	0.1	0.0	0.0	0.0	0.0	94.3	0.4	5.3	0.078	0.526	21.433917	-105.194417

15 CARR: Santa Cruz - San Blas

CLAVE: 18230

RUTA: MEX-015

AÑO: 2015

LUGAR	ESTACION				CLASIFICACION VEHICULAR EN PORCIENTO														COORDENADAS	
	KM	TE	SC	TDPA	M	A	B	C2	C3	T3S2	T3S3	T3S2R4	OTROS	A	B	C	K'	D	LATITUD	LONGITUD
Santa Cruz	0.00	3	0	2589	4.4	90.2	0.6	3.3	0.7	0.6	0.1	0.0	0.1	94.6	0.6	4.8	0.135	0.515	21.433711	-105.187711
Playa Los Cocos	3.90	1	0	2261	4.0	90.0	0.9	3.6	0.8	0.6	0.0	0.0	0.1	94.0	0.9	5.1	0.141	0.518	21.457796	-105.186417
Aticama	5.00	3	0	2739	7.0	86.1	0.8	4.3	0.9	0.6	0.1	0.0	0.2	93.1	0.8	6.1	0.126	0.518	21.490686	-105.188635
T. C. Crucero San Blas - San Blas	17.00	1	0	3383	4.5	90.5	0.9	2.9	0.5	0.5	0.0	0.0	0.2	95.0	0.9	4.1	0.154	0.501	21.549677	-105.254112

NAYARIT

16 CARR : Tepic - Ixtapan de La Concepción

CLAVE: 18028

RUTA: MEX-015

AÑO : 2015

LUGAR	ESTACION				CLASIFICACION VEHICULAR EN PORCIENTO										COORDENADAS					
	KM	TE	SC	TDPA	M	A	B	C2	C3	T3S2	T3S3	T3S2R4	OTROS	A	B	C	K'	D	LATITUD	LONGITUD
T. C. Tepic - Mazatlán	0.00	3	0	8494	2.0	82.6	5.6	5.8	1.4	1.6	0.4	0.4	0.2	84.6	5.6	9.8	0.121	0.516	21.521389	-104.932583
T. Der. Mecatán	19.00	1	0	2170	1.6	91.2	0.9	4.4	1.4	0.3	0.1	0.0	0.1	92.8	0.9	6.3	0.115	0.504	21.500417	-105.081167
T. Der. Mecatán	19.00	3	0	1961	2.0	89.1	1.1	5.5	1.8	0.3	0.1	0.0	0.1	91.1	1.1	7.8	0.122	0.507	21.498111	-105.082278
Jalcocotán	27.00	1	0	2701	1.6	93.6	0.4	3.4	0.8	0.1	0.0	0.0	0.1	95.2	0.4	4.4	0.098	0.503	21.483639	-105.089833
T. Der. Santa Cruz	50.00	3	0	2545	7.6	85.6	0.7	4.7	0.5	0.7	0.1	0.0	0.1	93.2	0.7	6.1	0.082	0.514	21.423483	-105.183814
Ixtapan de La Concepción	77.42	1	0	1520	5.7	87.5	1.1	3.9	0.6	1.0	0.1	0.0	0.1	93.2	1.1	5.7	0.095	0.518	21.311444	-105.153083

17 CARR : Tepic - Mazatlán

CLAVE: 00499

RUTA: MEX-015

AÑO : 2015

LUGAR	ESTACION				CLASIFICACION VEHICULAR EN PORCIENTO										COORDENADAS					
	KM	TE	SC	TDPA	M	A	B	C2	C3	T3S2	T3S3	T3S2R4	OTROS	A	B	C	K'	D	LATITUD	LONGITUD
Tepic (Alta)	0.00	3	1	10098	1.5	94.3	1.1	2.3	0.3	0.2	0.0	0.2	0.1	95.8	1.1	3.1	0.053	0.525	21.512235	-104.906373
Tepic (Baja)	0.00	3	1	8914	6.0	84.4	1.3	7.5	0.4	0.0	0.0	0.0	0.4	90.4	1.3	8.3	0.056	0.512	21.512230	-104.906373
Tepic (Baja)	0.00	3	2	8497	5.6	84.4	2.1	6.6	0.7	0.1	0.0	0.0	0.5	90.0	2.1	7.9	0.058	0.512	21.512230	-104.906373
Tepic (Alta)	0.00	3	2	11168	1.6	92.0	2.0	3.1	0.6	0.3	0.0	0.2	0.2	93.6	2.0	4.4	0.059	0.525	21.512235	-104.906373
T. Izq. Libramiento de Tepic (Alta)	2.56	1	1																	
T. Izq. Libramiento de Tepic (Baja)	2.56	1	1																	
T. Izq. Libramiento de Tepic (Alta)	2.56	1	2																	
T. Izq. Libramiento de Tepic (Baja)	2.56	1	2																	
T. Izq. Aut. Tepic - Ent. San Blas (Cuota)	3.70	3	0	8332	2.0	71.3	2.9	6.8	5.5	8.0	2.5	0.5	0.5	73.3	2.9	23.8	0.060	0.502	21.533694	-104.931306
Los Oates	19.80	3	0	3810	2.2	69.3	6.4	7.7	5.7	6.8	1.1	0.1	0.7	71.5	6.4	22.1	0.069	0.540	21.635086	-104.969458
T. Izq. Jumatán	28.52	1	0	4168	1.0	78.8	3.1	6.2	4.0	5.0	1.5	0.3	0.1	79.8	3.1	17.1	0.066	0.503	21.669728	-105.023212
T. Izq. Jumatán	28.52	3	1	7132	2.7	69.1	3.1	7.1	4.6	8.6	2.6	1.4	0.8	71.8	3.1	25.1	0.086	0.501	21.668101	-105.029720
T. Izq. Jumatán	28.52	3	2	7152	2.5	66.7	3.3	8.2	4.7	9.5	2.9	1.4	0.8	69.2	3.3	27.5	0.069	0.501	21.668101	-105.029720
T. Izq. San Blas	33.54	1	1	6257	1.9	67.9	7.7	6.6	4.1	8.4	1.1	1.6	0.7	69.8	7.7	22.5	0.120	0.518	21.686970	-105.047763
T. Izq. San Blas	33.54	1	2	6712	1.0	70.4	6.2	6.1	4.1	8.2	1.2	1.8	1.0	71.4	6.2	22.4	0.111	0.518	21.686970	-105.047763
T. Izq. San Blas	33.54	3	1	6904	0.7	71.3	5.1	6.5	5.0	7.6	0.9	1.6	1.3	72.0	5.1	22.9	0.080	0.536	21.698826	-105.052862
T. Izq. San Blas	33.54	3	2	6879	1.3	66.7	6.1	8.5	5.2	7.5	1.2	1.9	1.6	68.0	6.1	25.9	0.079	0.536	21.698826	-105.052862
T. Izq. Villa Hidalgo	48.12	1	0	7684	0.7	77.6	3.5	6.0	4.0	6.5	1.3	0.2	0.2	78.3	3.5	18.2	0.073	0.515	21.806013	-105.102399
T. Izq. Villa Hidalgo	48.12	3	0	7784	2.9	78.8	2.6	3.1	3.7	4.7	1.8	1.4	1.0	81.7	2.6	15.7	0.062	0.500	21.809487	-105.103659
T. Izq. Santiago Ixcuintla	56.42	1	0	8064	1.8	68.9	3.1	12.8	3.2	7.3	1.6	0.8	0.5	70.7	3.1	26.2	0.060	0.503	21.854446	-105.152952
T. Izq. Santiago Ixcuintla	56.42	3	0	7439	1.3	77.8	4.1	6.1	4.9	2.8	1.8	0.7	0.5	79.1	4.1	16.8	0.058	0.502	21.859201	-105.155937
T. Izq. Tuxpan	70.60	1	0	8632	2.1	78.3	4.6	7.1	2.6	4.3	0.6	0.1	0.3	80.4	4.6	15.0	0.076	0.520	21.944219	-105.215996
T. Izq. Tuxpan	70.60	3	0	9144	4.0	76.0	4.0	4.6	3.8	6.1	1.0	0.2	0.3	80.0	4.0	16.0	0.066	0.512	21.950604	-105.220925
T. Der. Rosa morada	90.70	3	0	5554	3.4	76.5	5.6	8.8	2.1	2.7	0.6	0.2	0.1	79.9	5.6	14.5	0.075	0.502	22.124560	-105.219597

NAYARIT

17 CARR : Tepic - Mazatlán

CLAVE: 00499

RUTA: MEX-015

AÑO: 2015

LUGAR	ESTACION				CLASIFICACION VEHICULAR EN PORCIENTO										COORDENADAS					
	KM	TE	SC	TDPA	M	A	B	C2	C3	T3S2	T3S3	T3S2R4	OTROS	A	B	C	K'	D	LATITUD	LONGITUD
Tierra Generosa	110.40	1	0	3813	1.6	63.7	10.5	13.2	4.4	5.0	0.5	0.0	1.1	65.3	10.5	24.2	0.074	0.508	22.293339	-105.272730
T. Der. Acaponeta	136.52	1	0	7623	1.9	70.8	3.3	13.2	2.7	5.0	2.1	0.6	0.4	72.7	3.3	24.0	0.065	0.500	22.492497	-105.384047
T. Der. Acaponeta	136.52	3	0	5744	2.1	75.9	4.1	4.4	3.5	8.4	1.2	0.1	0.3	78.0	4.1	17.9	0.079	0.503	22.492497	-105.384047
Lim. Edos. Term. Nay. Ppia. Sin.	144.60																			
Escuinapa de Hidalgo	200.00	1	0	8841	1.3	47.2	9.3	7.9	3.0	21.7	1.8	7.8	0.0	48.5	9.3	42.2	0.068	0.521	22.833579	-105.764104
Escuinapa de Hidalgo	200.00	3	0	7882	1.6	64.7	4.3	10.7	3.7	11.3	2.8	0.5	0.4	66.3	4.3	29.4	0.070	0.501	22.847017	-105.791936
Rosario	221.71	1	0	9546	3.4	68.3	3.2	8.4	3.2	9.9	2.4	0.4	0.8	71.7	3.2	25.1	0.071	0.507	22.997100	-105.851840
Rosario	221.71	3	0	5954	2.4	81.6	3.4	3.8	2.7	5.1	0.8	0.0	0.2	84.0	3.4	12.6	0.080	0.504	23.003273	-105.868415
X. C. Durango - Mazatlán (Cuota)	265.20	1	0	5256	3.3	74.0	5.1	5.8	3.5	6.8	1.0	0.0	0.5	77.3	5.1	17.6	0.079	0.508	23.190076	-106.173969
T. Der. Durango	267.99	1	0	4770	2.0	75.4	5.2	4.2	3.4	7.0	1.7	0.3	0.8	77.4	5.2	17.4	0.077	0.514	23.189505	-106.203826
T. Der. Durango	267.99	3	1	8044	2.7	78.4	4.8	4.7	2.1	5.1	0.8	1.1	0.3	81.1	4.8	14.1	0.072	0.514	23.189337	-106.211766
T. Der. Durango	267.99	3	2	8521	6.0	73.2	5.7	4.7	2.0	5.7	0.8	1.4	0.5	79.2	5.7	15.1	0.081	0.514	23.189337	-106.211766
Villa Unión	269.52	3	1	10605	2.6	72.2	4.4	7.7	2.0	6.5	2.1	1.3	1.2	74.8	4.4	20.8	0.080	0.503	23.190374	-106.222051
Villa Unión	269.52	3	2	10735	2.2	71.5	4.6	8.2	2.2	6.8	2.1	1.3	1.1	73.7	4.6	21.7	0.071	0.503	23.190374	-106.222051
T. Der. Libramiento de Mazatlán	288.87	1	1	12948	6.2	75.3	2.0	8.6	1.7	3.6	1.1	0.9	0.6	81.5	2.0	16.5	0.061	0.502	23.225079	-106.383145
T. Der. Libramiento de Mazatlán	288.87	1	2	13032	5.5	74.9	2.2	9.0	1.7	4.0	1.3	0.9	0.5	80.4	2.2	17.4	0.063	0.502	23.225079	-106.383145
Mazatlán	292.00																			

18 CARR : Tepic - Presa Aguamilpa

CLAVE: 18029

RUTA: MEX-015

AÑO: 2015

LUGAR	ESTACION				CLASIFICACION VEHICULAR EN PORCIENTO										COORDENADAS					
	KM	TE	SC	TDPA	M	A	B	C2	C3	T3S2	T3S3	T3S2R4	OTROS	A	B	C	K'	D	LATITUD	LONGITUD
T. C. Guadalajara - Tepic	0.00	3	1	9197	0.3	81.2	1.8	11.4	4.0	0.6	0.2	0.4	0.1	81.5	1.8	16.7	0.069	0.542	21.472527	-104.848585
T. C. Guadalajara - Tepic	0.00	3	2	10894	1.3	81.5	1.9	10.4	3.3	0.8	0.2	0.4	0.2	82.8	1.9	15.3	0.086	0.542	21.472527	-104.848585
X. C. Tepic - Fco. I. Madero	17.50	3	0	1411	1.6	79.6	2.5	10.4	5.3	0.2	0.2	0.2	0.0	81.2	2.5	16.3	0.071	0.501	21.591806	-104.843694
Presa Aguamilpa	54.00	1	0	1193	0.5	79.8	1.6	8.5	4.2	2.4	2.4	0.2	0.4	80.3	1.6	18.1	0.076	0.505	21.819389	-104.830667

19 CARR : Tepic - Puerto Vallarta

CLAVE: 00068

RUTA: MEX-200

AÑO: 2015

LUGAR	ESTACION				CLASIFICACION VEHICULAR EN PORCIENTO										COORDENADAS					
	KM	TE	SC	TDPA	M	A	B	C2	C3	T3S2	T3S3	T3S2R4	OTROS	A	B	C	K'	D	LATITUD	LONGITUD
Tepic	0.00	3	1	16519	1.0	90.0	1.0	7.2	0.6	0.1	0.0	0.0	0.1	91.0	1.0	8.0	0.071	0.535	21.490232	-104.895222
Tepic	0.00	3	2	19009	1.1	91.2	0.9	6.5	0.2	0.0	0.0	0.0	0.1	92.3	0.9	6.8	0.077	0.535	21.490232	-104.895222
Limite de Zona Urbana Tepic	1.80	3	1	14798	1.1	88.7	1.7	2.8	0.5	1.4	2.6	0.7	0.5	89.8	1.7	8.5	0.067	0.513	21.474062	-104.889764
Limite de Zona Urbana Tepic	1.80	3	2	15591	1.2	87.9	1.8	3.0	0.5	1.5	2.9	0.7	0.5	89.1	1.8	9.1	0.072	0.513	21.474062	-104.889764

NAYARIT

19 CARR : Tepic - Puerto Vallarta

CLAVE: 00068

RUTA: MEX-200

AÑO : 2015

LUGAR	ESTACION				CLASIFICACION VEHICULAR EN PORCIENTO										COORDENADAS					
	KM	TE	SC	TDPA	M	A	B	C2	C3	T3S2	T3S3	T3S2R4	OTROS	A	B	C	K'	D	LATITUD	LONGITUD
Jalisco	7.15	3	0	13614	0.8	85.7	1.0	8.6	2.6	0.7	0.4	0.1	0.1	86.5	1.0	12.5	0.067	0.502	21.435409	-104.899914
T. Izq. Emiliano Zapata	18.40	3	0	6173	0.7	90.2	2.7	3.4	1.4	0.7	0.5	0.3	0.1	90.9	2.7	6.4	0.071	0.503	21.360990	-104.918591
T. Izq. Compostela (1° Acceso)	35.80	1	0	5836	0.8	87.9	2.7	6.2	1.2	0.7	0.4	0.0	0.1	88.7	2.7	8.6	0.083	0.507	21.253960	-104.901521
T. Izq. Compostela (1° Acceso)	35.80	3	0	3759	1.0	88.4	2.5	4.4	1.9	1.1	0.6	0.0	0.1	89.4	2.5	8.1	0.084	0.527	21.248302	-104.903361
Las Varas	71.30	1	0	9169	10.2	76.7	6.4	3.9	0.8	0.8	0.4	0.4	0.4	86.9	6.4	6.7	0.082	0.518	21.186778	-105.124167
Las Varas	71.30	3	0	12271	2.7	83.8	4.8	5.2	1.1	1.4	0.4	0.4	0.2	86.5	4.8	8.7	0.109	0.530	21.171056	-105.150750
T. Der. Rincón de Guayabitos	94.50	1	1	9077	4.0	86.0	3.1	4.8	0.7	0.8	0.2	0.2	0.2	90.0	3.1	6.9	0.067	0.518	21.026917	-105.261167
T. Der. Rincón de Guayabitos	94.50	1	2	9748	4.2	86.6	3.0	4.1	0.6	0.9	0.2	0.2	0.2	90.8	3.0	6.2	0.121	0.518	21.026917	-105.261167
T. Der. Rincón de Guayabitos	94.50	3	0	12097	3.3	85.6	4.0	4.3	0.9	1.1	0.3	0.3	0.2	88.9	4.0	7.1	0.080	0.505	21.024389	-105.265111
T. Der. Sayulita	122.91	1	0	9747	2.0	82.6	5.6	5.8	1.4	1.6	0.4	0.4	0.2	84.6	5.6	9.8	0.105	0.516	20.864722	-105.426083
T. Der. Sayulita	122.91	3	0	9827	3.2	83.2	5.1	5.4	1.1	1.3	0.2	0.2	0.3	86.4	5.1	8.5	0.116	0.510	20.860472	-105.424917
T. Der. Cruz de Juanacaxtle	137.30	3	1	8169	2.3	76.1	6.8	12.3	1.0	0.7	0.3	0.3	0.2	78.4	6.8	14.8	0.094	0.500	20.764722	-105.367667
T. Der. Cruz de Juanacaxtle	137.30	3	2	8157	2.9	75.0	4.1	15.6	0.8	0.8	0.4	0.3	0.1	77.9	4.1	18.0	0.086	0.500	20.764722	-105.367667
Bucerías	140.81	3	1	11322	0.7	89.1	2.7	5.3	0.8	0.8	0.3	0.2	0.1	89.8	2.7	7.5	0.075	0.504	20.750337	-105.321948
Bucerías	140.81	3	2	11128	1.2	87.7	2.9	5.9	0.9	0.8	0.3	0.2	0.1	88.9	2.9	8.2	0.094	0.504	20.750337	-105.321948
Lim. Edos. Term. Nay. Ppia. Jal.	152.60																			
T. Der. Aeropuerto Díaz Ordáz	158.37	1	1	21111	2.3	89.7	0.9	3.0	0.9	0.9	1.0	0.6	0.7	92.0	0.9	7.1	0.073	0.547	20.682779	-105.242154
T. Der. Aeropuerto Díaz Ordáz	158.37	1	2	25463	3.4	87.8	1.1	3.1	1.1	1.1	1.1	0.6	0.7	91.2	1.1	7.7	0.073	0.547	20.682794	-105.242161
T. Der. Aeropuerto Díaz Ordáz (Baja)	158.37	3	1	11071	2.7	81.1	4.5	9.4	0.6	0.5	0.5	0.2	0.5	83.8	4.5	11.7	0.079	0.531	20.671148	-105.249817
T. Der. Aeropuerto Díaz Ordáz (Alta)	158.37	3	1	13271	2.3	85.5	1.2	4.8	0.6	1.3	3.1	0.5	0.7	87.8	1.2	11.0	0.056	0.536	20.671219	-105.249797
T. Der. Aeropuerto Díaz Ordáz (Alta)	158.37	3	2	10382	3.5	83.3	1.3	5.3	0.8	1.3	3.3	0.5	0.7	86.8	1.3	11.9	0.071	0.536	20.671267	-105.249799
T. Der. Aeropuerto Díaz Ordáz (Baja)	158.37	3	2	12553	2.8	78.6	5.4	10.7	0.8	0.5	0.5	0.2	0.5	81.4	5.4	13.2	0.069	0.531	20.671189	-105.249814
Puerto Vallarta	166.88																			

20 CARR : Chapalilla - Compostela (Cuota)

CLAVE: 18004

RUTA: MEX-068D

AÑO : 2015

LUGAR	ESTACION				CLASIFICACION VEHICULAR EN PORCIENTO										COORDENADAS					
	KM	TE	SC	TDPA	M	A	B	C2	C3	T3S2	T3S3	T3S2R4	OTROS	A	B	C	K'	D	LATITUD	LONGITUD
T. C. Guadalajara - Tepic	0.00	3	0	6996	0.8	71.9	6.4	8.8	3.6	4.6	1.6	1.7	0.6	72.7	6.4	20.9	0.070	0.502	21.190444	-104.642972
Caseta de Cobro Compostela	31.50	2	0	4762	0.8	79.6	8.5	3.5	2.6	2.6	0.7	1.5	0.2	80.4	8.5	11.1	0.114	0.500	21.229440	-104.887437
T. Der. Compostela	36.50	1	0	5476	2.1	78.4	8.2	5.0	2.0	2.7	0.5	0.8	0.3	80.5	8.2	11.3	0.155	0.560	21.228029	-104.899391
T. C. Tepic - Puerto Vallarta	38.00	1	0	6820	0.6	72.0	6.7	9.8	3.6	4.6	0.7	1.6	0.4	72.6	6.7	20.7	0.066	0.501	21.231574	-104.921472

NAYARIT

21 CARR : Guadalajara - Tepic (Cuota)

CLAVE: 00033

RUTA: MEX-015D

AÑO : 2015

LUGAR	ESTACION				CLASIFICACION VEHICULAR EN PORCIENTO										COORDENADAS					
	KM	TE	SC	TDPA	M	A	B	C2	C3	T3S2	T3S3	T3S2R4	OTROS	A	B	C	K'	D	LATITUD	LONGITUD
T. C. Guadalajara - Tepic (Libre)	0.00	3	1	5156	0.7	60.3	10.7	7.5	2.4	11.8	2.1	3.6	0.9	61.0	10.7	28.3	0.078	0.521	20.739566	-103.583119
T. C. Guadalajara - Tepic (Libre)	0.00	3	2	5611	0.6	56.9	11.6	8.6	2.7	12.1	2.5	4.0	1.0	57.5	11.6	30.9	0.123	0.521	20.739557	-103.583120
Caseta de Cobro Arenal	10.96	2	1	4983	0.5	62.9	10.9	3.0	4.1	11.7	1.8	4.2	0.9	63.4	10.9	25.7	0.092	0.500	20.778732	-103.662440
Caseta de Cobro Arenal	10.96	2	2	4983	0.5	62.9	10.9	3.0	4.1	11.7	1.8	4.2	0.9	63.4	10.9	25.7	0.092	0.500	20.778732	-103.662440
T. Der. Magdalena	45.00	1	1	5199	0.4	61.0	10.1	7.7	2.8	10.8	2.4	3.8	1.0	61.4	10.1	28.5	0.076	0.517	20.900925	-103.958787
T. Der. Magdalena	45.00	1	2	5555	0.6	56.8	11.5	8.3	2.9	12.1	2.9	4.0	0.9	57.4	11.5	31.1	0.129	0.517	20.900912	-103.958790
T. Der. Magdalena	45.00	3	1	5706	0.8	58.8	9.8	6.9	3.6	12.9	2.7	3.6	0.9	59.6	9.8	30.6	0.075	0.507	20.902842	-103.989124
T. Der. Magdalena	45.00	3	2	5872	0.8	54.3	11.3	7.7	4.0	14.0	3.0	4.0	0.9	55.1	11.3	33.6	0.130	0.507	20.902842	-103.989121
Caseta de Cobro Plan de Barrancas	69.34	2	1	5221	0.5	61.6	11.8	2.7	3.9	12.5	2.0	3.9	1.1	62.1	11.8	26.1	0.092	0.500	21.005394	-104.144086
Caseta de Cobro Plan de Barrancas	69.34	2	2	5221	0.5	61.6	11.8	2.7	3.9	12.5	2.0	3.9	1.1	62.1	11.8	26.1	0.092	0.500	21.005394	-104.144086
Lim. Edos. Term. Jal. Ppia. Nay.	84.60																			
Caseta de Cobro Santa Ma. del Oro	145.32	2	1	3191	0.5	53.8	9.8	4.2	6.1	16.0	2.1	6.4	1.1	54.3	9.8	35.9	0.092	0.500	21.328309	-104.664328
Caseta de Cobro Santa Ma. del Oro	145.32	2	2	3191	0.5	53.8	9.8	4.2	6.1	16.0	2.1	6.4	1.1	54.3	9.8	35.9	0.092	0.500	21.328309	-104.664328
Caseta de Cobro Santa Ma. del Oro	145.32	3	1	3605	0.8	60.5	9.8	8.4	4.9	9.9	1.8	3.4	0.5	61.3	9.8	28.9	0.063	0.504	21.331361	-104.666500
Caseta de Cobro Santa Ma. del Oro	145.32	3	2	3549	0.5	61.6	10.5	8.1	5.2	8.8	1.7	3.4	0.2	62.1	10.5	27.4	0.075	0.504	21.331361	-104.666500
T. C. Guadalajara - Tepic (Libre)	168.62																			

22 CARR : Tepic - Villa Unión (cuota)

CLAVE: 00500

RUTA: MEX-015D

AÑO : 2015

LUGAR	ESTACION				CLASIFICACION VEHICULAR EN PORCIENTO										COORDENADAS					
	KM	TE	SC	TDPA	M	A	B	C2	C3	T3S2	T3S3	T3S2R4	OTROS	A	B	C	K'	D	LATITUD	LONGITUD
Tepic	0.00																			
Caseta de Cobro El Pichón	4.70	1	1	5623	1.0	73.4	6.0	4.8	1.4	7.6	1.7	2.8	1.3	74.4	6.0	19.6	0.079	0.505	21.566613	-104.980367
Caseta de Cobro El Pichón	4.70	1	2	5746	1.4	74.3	5.5	4.5	1.8	6.5	2.1	2.8	1.1	75.7	5.5	18.8	0.076	0.505	21.566613	-104.980367
Caseta de Cobro El Pichón	4.70	2	1	4801	0.6	68.1	7.6	3.8	3.9	10.0	1.3	4.1	0.6	68.7	7.6	23.7	0.098	0.500	21.571682	-104.987528
Caseta de Cobro El Pichón	4.70	2	2	4801	0.6	68.1	7.6	3.8	3.9	10.0	1.3	4.1	0.6	68.7	7.6	23.7	0.098	0.500	21.571682	-104.987528
T. C. Tepic - Mazatlán	21.00	1	1	5165	0.5	75.2	4.9	5.3	2.2	8.3	1.7	1.2	0.7	75.7	4.9	19.4	0.097	0.508	21.662655	-105.027794
T. C. Tepic - Mazatlán	21.00	1	2	5342	0.6	72.5	7.1	8.2	1.4	7.1	1.4	1.1	0.6	73.1	7.1	19.8	0.066	0.508	21.662655	-105.027794
T. C. Tepic - Mazatlán	24.50	3	0	5364	2.5	71.1	8.0	9.5	3.9	2.7	1.1	0.7	0.5	73.6	8.0	18.4	0.072	0.504	21.714461	-105.060385
Est. Ruíz	54.90	1	0	4937	0.7	74.9	8.3	5.2	1.8	6.3	0.6	2.0	0.2	75.6	8.3	16.1	0.075	0.501	21.947399	-105.112100
Est. Ruíz	54.90	3	0	3901	0.8	64.4	10.8	2.4	1.6	10.1	1.6	7.5	0.8	65.2	10.8	24.0	0.096	0.505	21.956930	-105.120255
Rosa morada	73.50	1	0	4304	1.1	69.6	9.1	7.9	2.9	7.8	0.8	0.7	0.1	70.7	9.1	20.2	0.062	0.503	22.085417	-105.211756
Rosa morada	73.50	3	0	3966	0.7	70.8	11.2	8.6	4.5	3.3	0.6	0.2	0.1	71.5	11.2	17.3	0.065	0.501	22.091306	-105.219327
Acaponeta	120.20	1	0	4048	2.6	70.9	8.2	9.4	3.3	4.0	1.0	0.4	0.2	73.5	8.2	18.3	0.078	0.503	22.449684	-105.420079
Caseta de Cobro Acaponeta	120.20	2	0	199	0.1	54.6	14.2	5.5	7.3	11.9	1.8	4.4	0.2	54.7	14.2	31.1	0.081	0.500	22.454352	-105.419106

NAYARIT

22 CARR: Tepic - Villa Unión (cuota)

CLAVE: 00500

RUTA: MEX-015D

AÑO: 2015

LUGAR	ESTACION				CLASIFICACION VEHICULAR EN PORCIENTO													COORDENADAS		
	KM	TE	SC	TDPA	M	A	B	C2	C3	T3S2	T3S3	T3S2R4	OTROS	A	B	C	K'	D	LATITUD	LONGITUD
Acaponeta	120.20	3	0	3782	0.8	48.9	14.7	11.0	1.9	11.7	1.7	7.3	2.0	49.7	14.7	35.6	0.086	0.521	22.457527	-105.429478
Lim. Edos. Term. Nay. Ppia. Sin.	132.80																			
Escuinapa de Hidalgo	208.60	1	1	2159	1.9	59.0	10.8	3.8	3.3	13.6	1.2	5.8	0.6	60.9	10.8	28.3	0.120	0.501	22.853197	-105.748622
Escuinapa de Hidalgo	208.60	1	2	2153	1.8	56.9	11.5	4.8	3.7	13.9	0.8	6.0	0.6	58.7	11.5	29.8	0.112	0.501	22.853197	-105.748622
Escuinapa de Hidalgo	208.60	3	0	4202	0.8	43.2	10.0	7.0	4.5	20.9	3.3	9.5	0.8	44.0	10.0	46.0	0.083	0.501	22.863145	-105.758318
Rosario	220.68	1	0	3566	1.2	49.0	9.8	7.1	2.9	18.6	2.9	7.6	0.9	50.2	9.8	40.0	0.089	0.501	22.975592	-105.867083
Caseta de Cobro Rosario	220.68	2	0	3907	0.5	42.4	9.1	3.6	4.8	25.1	3.0	10.2	1.3	42.9	9.1	48.0	0.081	0.500	22.984689	-105.877932
Rosario	220.68	3	1	2084	3.0	50.4	12.7	9.0	3.1	14.4	1.5	5.5	0.4	53.4	12.7	33.9	0.095	0.544	22.990990	-105.885567
Rosario	220.68	3	2	2029	2.2	45.4	10.2	9.3	2.7	18.3	2.9	8.0	1.0	47.6	10.2	42.2	0.087	0.505	22.990990	-105.885567
X. C. Durango - Villa Unión (Cuota)	240.90	1	0	4265	3.0	45.3	12.6	10.8	5.8	13.4	1.8	5.5	1.8	48.3	12.6	39.1	0.070	0.528	23.185886	-106.174225
X. C. Durango - Villa Unión (Cuota)	240.90	3	1	3306	2.3	53.8	12.8	10.9	4.2	10.4	0.9	3.3	1.4	56.1	12.8	31.1	0.165	0.541	23.195145	-106.192131
X. C. Durango - Villa Unión (Cuota)	240.90	3	2	3894	6.1	53.5	9.6	4.7	3.4	14.7	1.5	5.9	0.6	59.6	9.6	30.8	0.169	0.541	23.195145	-106.192131

23 CARR: El Carrizo - La Batanga

CLAVE: 18107

RUTA: NAY-078

AÑO: 2015

LUGAR	ESTACION				CLASIFICACION VEHICULAR EN PORCIENTO													COORDENADAS		
	KM	TE	SC	TDPA	M	A	B	C2	C3	T3S2	T3S3	T3S2R4	OTROS	A	B	C	K'	D	LATITUD	LONGITUD
T. C. Ent. Santiago Ixcuintla - Playa Los Corchos	0.00	3	0	2143	5.0	91.9	0.5	1.8	0.6	0.0	0.0	0.0	0.2	96.9	0.5	2.6	0.125	0.508	21.772754	-105.274532
Sentispac	9.00	1	0	1689	8.1	89.2	0.2	2.0	0.4	0.0	0.0	0.0	0.1	97.3	0.2	2.5	0.113	0.522	21.809275	-105.337994
La Batanga	25.00	1	0	151	0.0	95.7	1.8	2.5	0.0	0.0	0.0	0.0	0.0	95.7	1.8	2.5	0.106	0.512	21.886187	-105.461187

24 CARR: Navarrete - Sauta

CLAVE: 18013

RUTA: NAY-013

AÑO: 2015

LUGAR	ESTACION				CLASIFICACION VEHICULAR EN PORCIENTO													COORDENADAS		
	KM	TE	SC	TDPA	M	A	B	C2	C3	T3S2	T3S3	T3S2R4	OTROS	A	B	C	K'	D	LATITUD	LONGITUD
T. C. Crucero San Blas - San Blas	0.00	3	0	1439	0.1	93.1	2.2	3.3	0.7	0.2	0.2	0.0	0.2	93.2	2.2	4.6	0.068	0.501	21.652972	-105.118000
Sauta	7.00	1	0	1929	32.5	63.0	0.2	0.6	0.7	0.1	0.1	0.0	2.8	95.5	0.2	4.3	0.081	0.510	21.713083	-105.137472

25 CARR: Ramal a Amado Nervo

CLAVE: 18011

RUTA: NAY

AÑO: 2015

LUGAR	ESTACION				CLASIFICACION VEHICULAR EN PORCIENTO													COORDENADAS		
	KM	TE	SC	TDPA	M	A	B	C2	C3	T3S2	T3S3	T3S2R4	OTROS	A	B	C	K'	D	LATITUD	LONGITUD
T. C. Guadalajara - Tepic	0.00	3	0	1058	1.4	87.2	0.4	8.4	1.7	0.7	0.0	0.0	0.2	88.6	0.4	11.0	0.087	0.512	21.129333	-104.602694
Amado Nervo	15.00																			

NAYARIT

26 CARR: Ramal a Bellavista

CLAVE: 18059

RUTA: NAY-059

AÑO: 2015

LUGAR	ESTACION				CLASIFICACION VEHICULAR EN PORCIENTO													COORDENADAS		
	KM	TE	SC	TDPA	M	A	B	C2	C3	T3S2	T3S3	T3S2R4	OTROS	A	B	C	K'	D	LATITUD	LONGITUD
T. C. Tepic - Francisco I. Madero	0.00	3	0	2514	2.2	87.9	0.5	6.9	2.5	0.0	0.0	0.0	0.0	90.1	0.5	9.4	0.085	0.506	21.565139	-104.876889
Bellavista	1.30																			

27 CARR: Ramal a El Colomo

CLAVE: 18014

RUTA: NAY

AÑO: 2015

LUGAR	ESTACION				CLASIFICACION VEHICULAR EN PORCIENTO													COORDENADAS		
	KM	TE	SC	TDPA	M	A	B	C2	C3	T3S2	T3S3	T3S2R4	OTROS	A	B	C	K'	D	LATITUD	LONGITUD
T. C. Tepic - Puerto Vallarta	0.00																			
San Vicente	3.00	1	1	13234	4.1	87.7	1.3	6.0	0.5	0.2	0.0	0.0	0.2	91.8	1.3	6.9	0.077	0.518	20.740944	-105.263361
San Vicente	3.00	1	2	12307	5.2	80.3	3.3	10.0	0.7	0.1	0.1	0.0	0.3	85.5	3.3	11.2	0.081	0.518	20.740944	-105.263361
El Colomo	21.00																			

28 CARR: Ramal a Estación Yago

CLAVE: 18224

RUTA: NAY

AÑO: 2015

LUGAR	ESTACION				CLASIFICACION VEHICULAR EN PORCIENTO													COORDENADAS		
	KM	TE	SC	TDPA	M	A	B	C2	C3	T3S2	T3S3	T3S2R4	OTROS	A	B	C	K'	D	LATITUD	LONGITUD
T. C. Tepic - Mazatlán	0.00	3	0	1693	7.5	79.2	4.0	6.4	2.1	0.2	0.2	0.2	0.2	86.7	4.0	9.3	0.077	0.503	21.834120	-105.113037
Estacion Yago	7.00																			

29 CARR: Ramal a Ixtapan de La Concepción

CLAVE: 18233

RUTA: NAY

AÑO: 2015

LUGAR	ESTACION				CLASIFICACION VEHICULAR EN PORCIENTO													COORDENADAS		
	KM	TE	SC	TDPA	M	A	B	C2	C3	T3S2	T3S3	T3S2R4	OTROS	A	B	C	K'	D	LATITUD	LONGITUD
T. C. Tepic - Puerto Vallarta (Las Varas)	0.00	3	0	3803	3.4	91.4	0.7	3.4	0.7	0.3	0.0	0.0	0.1	94.8	0.7	4.5	0.075	0.511	21.188750	-105.145167
Ixtapan de La Concepción	20.00	1	0	1587	0.7	14.4	3.1	81.6	0.1	0.0	0.0	0.0	0.1	15.1	3.1	81.8	0.105	0.508	21.299278	-105.157583

30 CARR: Ramal a Milpas Viejas

CLAVE: 18007

RUTA: NAY

AÑO: 2015

LUGAR	ESTACION				CLASIFICACION VEHICULAR EN PORCIENTO													COORDENADAS		
	KM	TE	SC	TDPA	M	A	B	C2	C3	T3S2	T3S3	T3S2R4	OTROS	A	B	C	K'	D	LATITUD	LONGITUD
T. Carr. Tepic - Mazatlán	0.00	3	0	1851	2.7	91.7	0.7	3.2	1.4	0.1	0.1	0.0	0.1	94.4	0.7	4.9	0.085	0.501	22.454016	-105.360914
Milpas Viejas	17.00																			

NAYARIT

31 CARR: Ramal a Villa Hidalgo

CLAVE: 18031

RUTA: NAY

AÑO: 2015

LUGAR	ESTACION				CLASIFICACION VEHICULAR EN PORCIENTO													COORDENADAS		
	KM	TE	SC	TDPA	M	A	B	C2	C3	T3S2	T3S3	T3S2R4	OTROS	A	B	C	K'	D	LATITUD	LONGITUD
T. C. Tepic - Mazatlán	0.00	3	0	2732	5.7	82.4	1.6	4.9	3.3	1.4	0.5	0.0	0.2	88.1	1.6	10.3	0.093	0.521	21.807001	-105.105030
Villa Hidalgo	16.00	1	0	4166	0.8	93.6	0.8	3.2	0.8	0.6	0.2	0.0	0.0	94.4	0.8	4.8	0.103	0.518	21.752846	-105.228376

32 CARR: Ramal a Volcán del Ceboruco

CLAVE: 18003

RUTA: NAY

AÑO: 2015

LUGAR	ESTACION				CLASIFICACION VEHICULAR EN PORCIENTO													COORDENADAS		
	KM	TE	SC	TDPA	M	A	B	C2	C3	T3S2	T3S3	T3S2R4	OTROS	A	B	C	K'	D	LATITUD	LONGITUD
T. C. Guadalajara - Tepic	0.00	3	0	6098	1.9	64.5	3.5	9.5	7.0	7.9	1.3	0.6	3.8	66.4	3.5	30.1	0.063	0.500	21.051194	-104.460056
Volcán Ceboruco	25.00																			

33 CARR: Tepic - Francisco I. Madero

CLAVE: 18009

RUTA: NAY-MEX

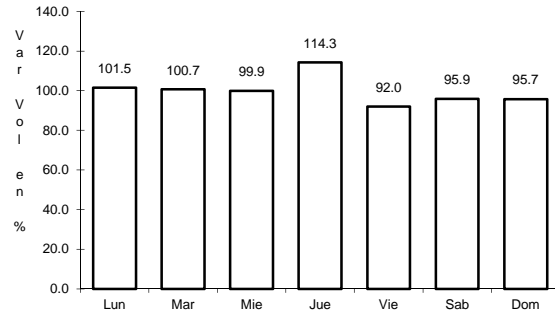
AÑO: 2015

LUGAR	ESTACION				CLASIFICACION VEHICULAR EN PORCIENTO													COORDENADAS		
	KM	TE	SC	TDPA	M	A	B	C2	C3	T3S2	T3S3	T3S2R4	OTROS	A	B	C	K'	D	LATITUD	LONGITUD
Tepic	0.00	3	0	6225	3.3	89.8	1.1	4.5	0.6	0.0	0.0	0.0	0.7	93.1	1.1	5.8	0.068	0.503	21.543611	-104.864639
Bellavista	9.00	3	0	4286	8.5	84.0	1.7	5.1	0.2	0.0	0.0	0.0	0.5	92.5	1.7	5.8	0.068	0.504	21.568583	-104.874583
Francisco I. Madero	16.00																			

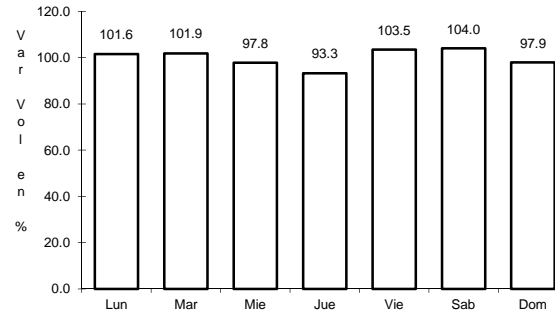
1 CARR: Crucero de San Blas - San Blas

CLAVE: 18229

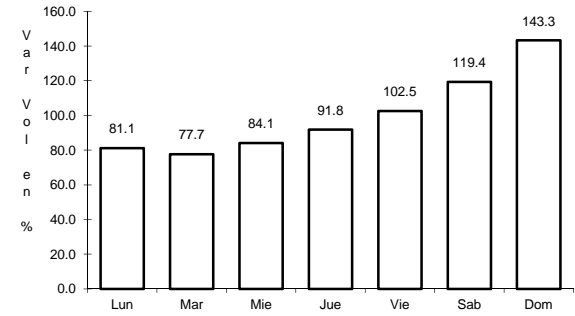
RUTA: MEX-015



Km: 0.00 Tipo: 3 Sent: 0



Km: 11.00 Tipo: 3 Sent: 0

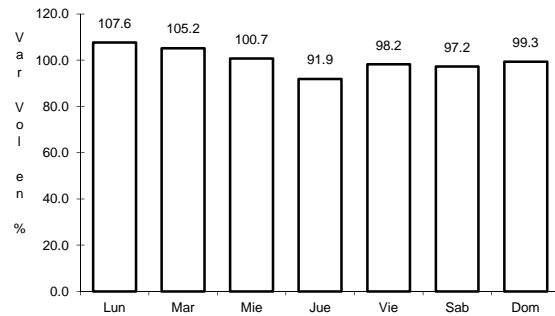


Km: 36.00 Tipo: 1 Sent: 0

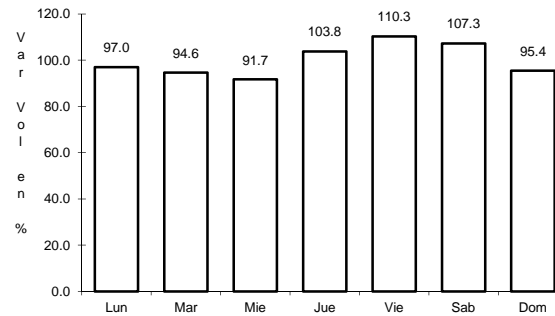
2 CARR: Ent. Acaponeta - El Novillero

CLAVE: 18023

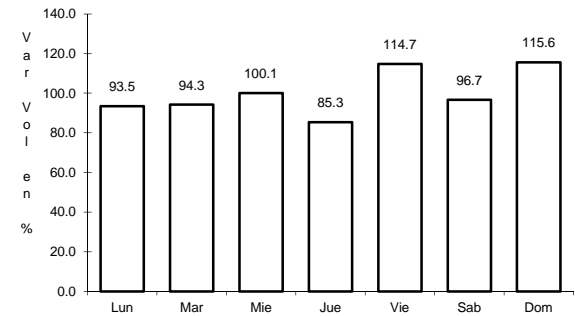
RUTA: MEX-015



Km: 0.00 Tipo: 3 Sent: 0



Km: 13.00 Tipo: 1 Sent: 0

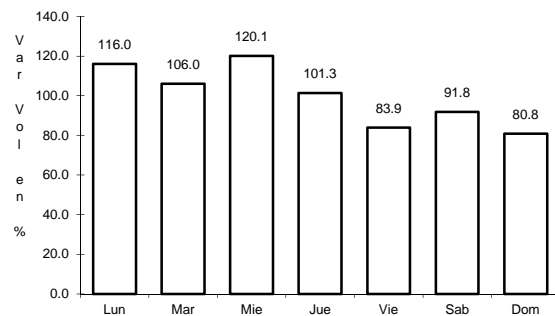


Km: 36.00 Tipo: 1 Sent: 0

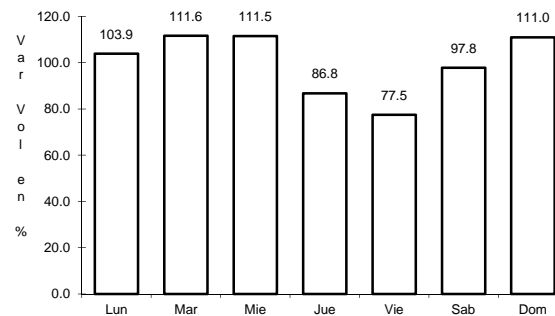
3 CARR: Ent. Santiago Ixcuintla - Playa Los Corchos

CLAVE: 18016

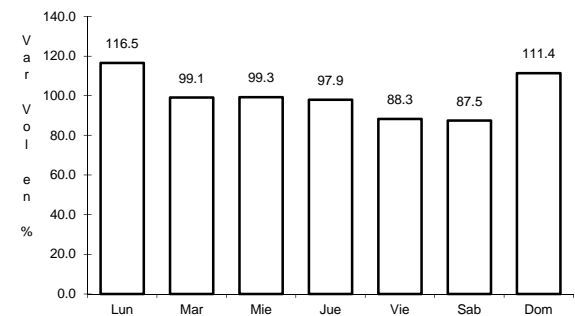
RUTA: MEX-015



Km: 0.00 Tipo: 3 Sent: 1



Km: 0.00 Tipo: 3 Sent: 2

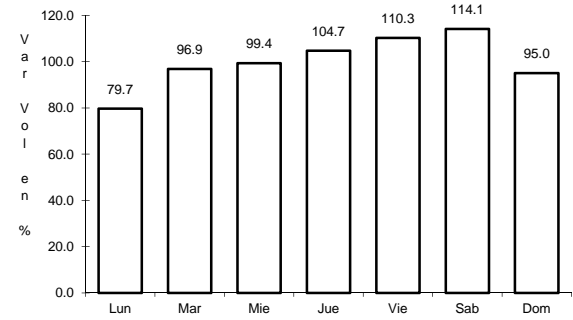
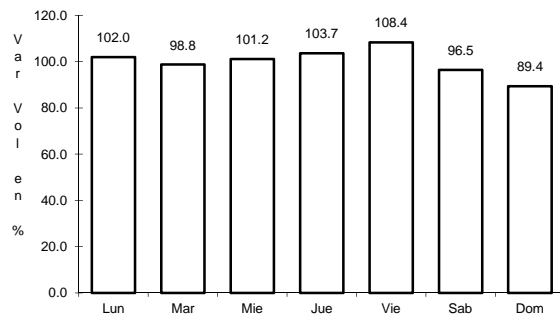
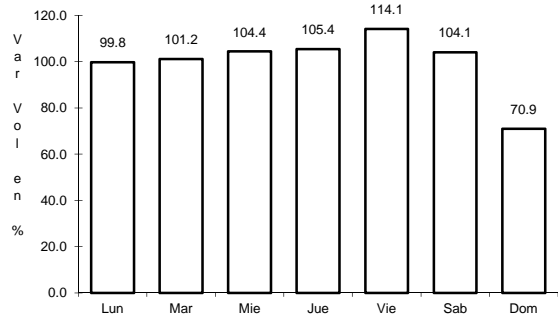


Km: 39.00 Tipo: 1 Sent: 0

4 CARR: Guadalajara - Tepic

CLAVE: 00031

RUTA: MEX-015



Km: 8.30

Tipo: 3

Sent: 1

Km: 8.30

Tipo: 3

Sent: 2

Km: 138.84

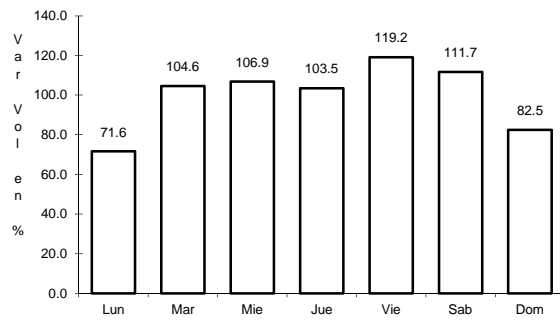
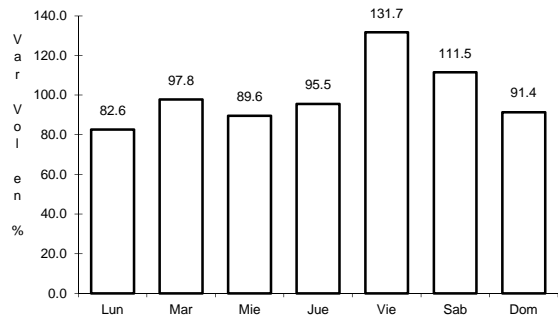
Tipo: 1

Sent: 0

5 CARR: Libramiento de Tepic

CLAVE: 18232

RUTA: MEX-015



Km: 5.00

Tipo: 1

Sent: 1

Km: 5.00

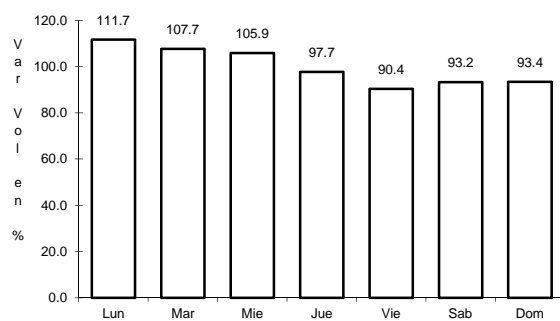
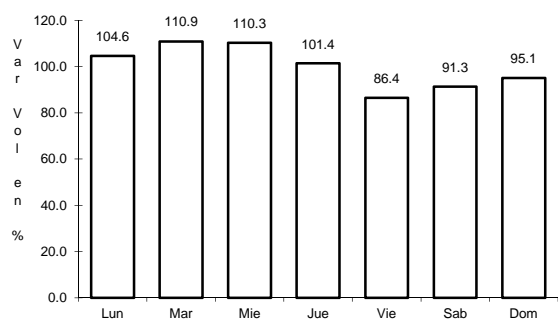
Tipo: 1

Sent: 2

6 CARR: Peñitas - Tuxpan

CLAVE: 18019

RUTA: MEX-015



Km: 0.00

Tipo: 3

Sent: 0

Km: 9.00

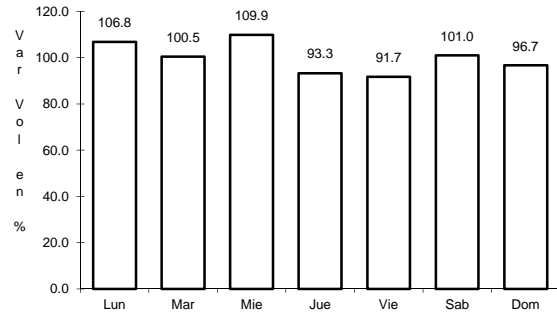
Tipo: 1

Sent: 0

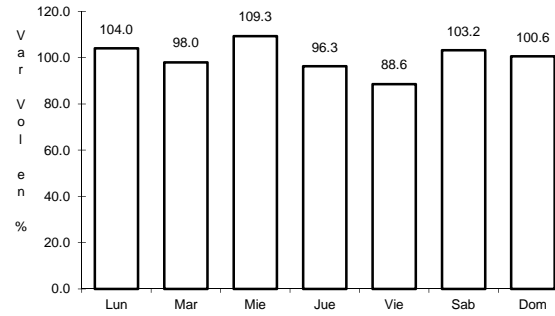
7 CARR: Ramal a Acaponeta

CLAVE: 18038

RUTA: MEX-015



Km: 0.00 Tipo: 3 Sent: 1

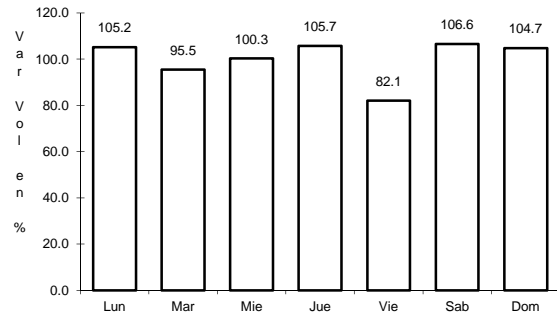


Km: 0.00 Tipo: 3 Sent: 2

8 CARR: Ramal a Estación Nanchi

CLAVE: 18068

RUTA: MEX-015

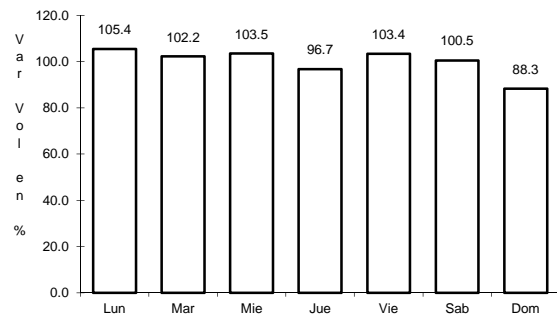


Km: 0.00 Tipo: 3 Sent: 0

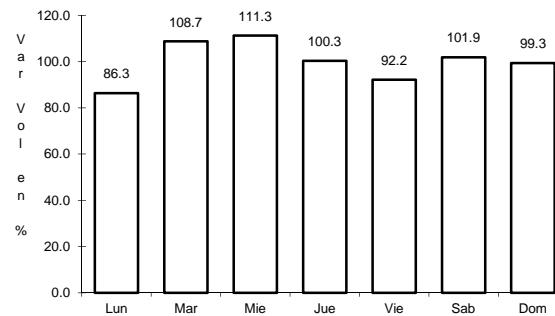
9 CARR: Ramal a Estación Ruíz

CLAVE: 18026

RUTA: MEX-015



Km: 0.00 Tipo: 3 Sent: 0

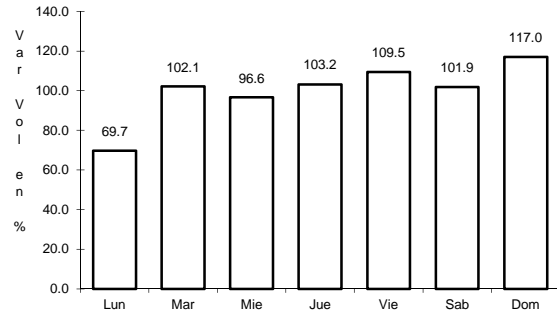


Km: 5.50 Tipo: 1 Sent: 0

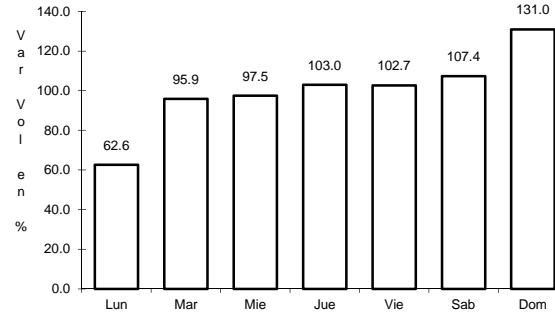
10 CARR: Ramal a La Laguna de Santa María

CLAVE: 18005

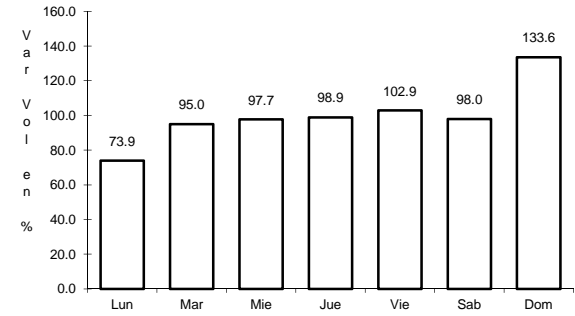
RUTA: MEX-015



Km: 0.00 Tipo: 3 Sent: 0



Km: 11.50 Tipo: 1 Sent: 1

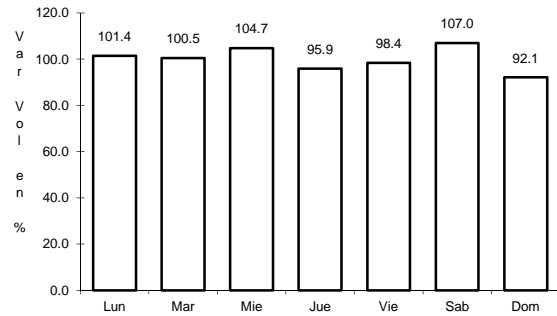


Km: 11.50 Tipo: 1 Sent: 2

11 CARR: Ramal a Mecatán

CLAVE: 18010

RUTA: MEX-015

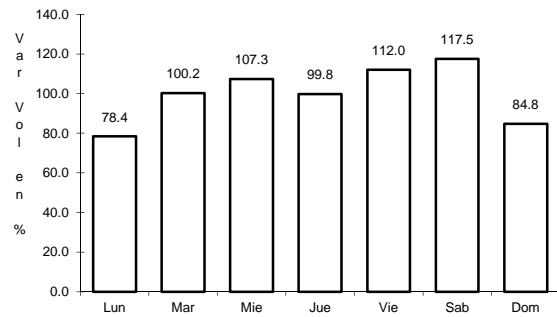


Km: 0.00 Tipo: 3 Sent: 0

12 CARR: Ramal a Nuevo Aeropuerto de Tepic

CLAVE: 18012

RUTA: MEX-015

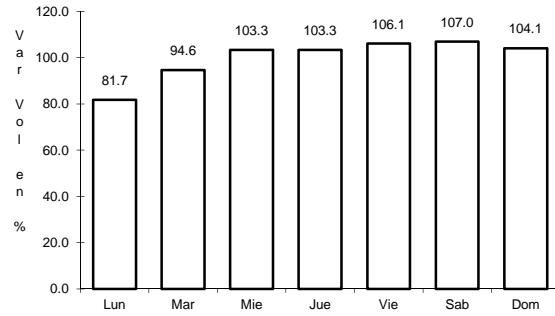


Km: 0.00 Tipo: 3 Sent: 0

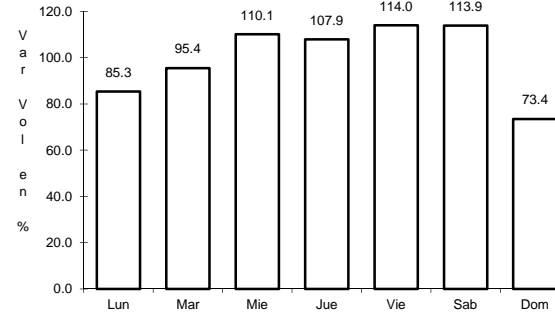
13 CARR: Ramal a Punta Mita

CLAVE: 18020

RUTA: MEX-200



Km: 0.00 Tipo: 3 Sent: 0

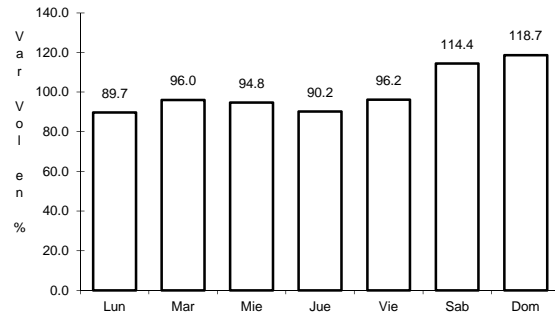


Km: 9.00 Tipo: 3 Sent: 0

14 CARR: Ramal a Santa Cruz

CLAVE: 18030

RUTA: MEX-015

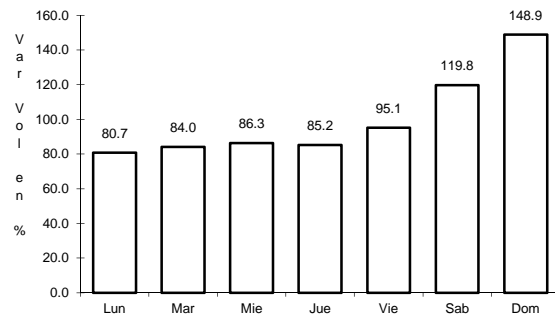


Km: 1.30 Tipo: 1 Sent: 0

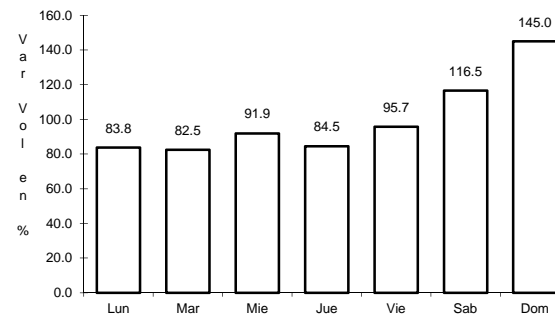
15 CARR: Santa Cruz - San Blas

CLAVE: 18230

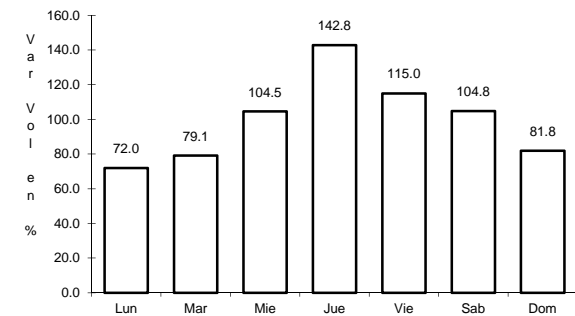
RUTA: MEX-015



Km: 0.00 Tipo: 3 Sent: 0



Km: 5.00 Tipo: 3 Sent: 0

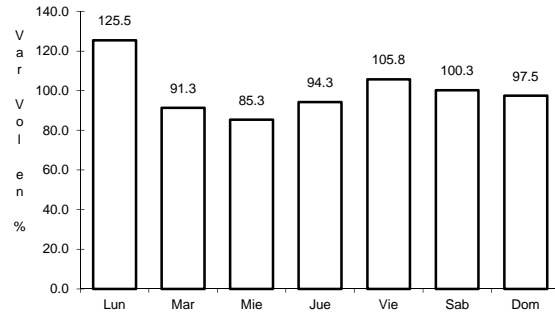


Km: 17.00 Tipo: 1 Sent: 0

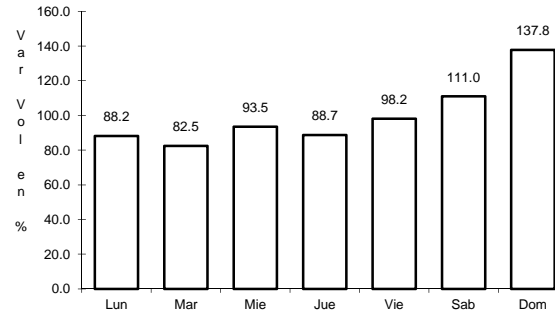
16 CARR: Tepic - Ixtapan de La Concepción

CLAVE: 18028

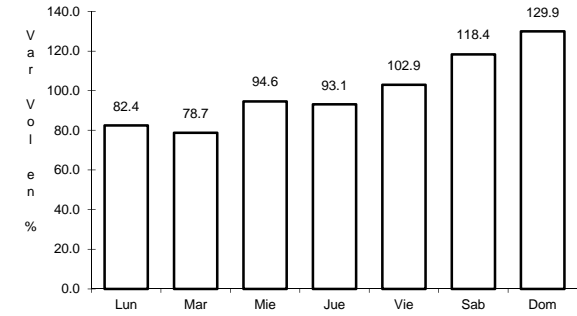
RUTA: MEX-015



Km: 0.00 Tipo: 3 Sent: 0



Km: 27.00 Tipo: 1 Sent: 0

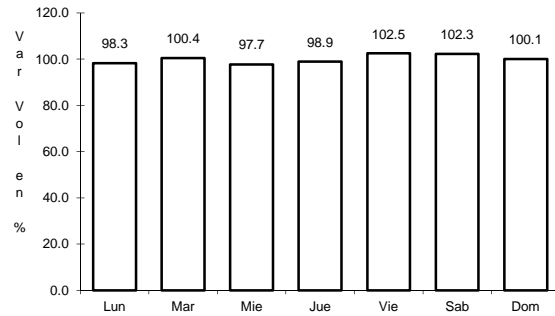


Km: 77.42 Tipo: 1 Sent: 0

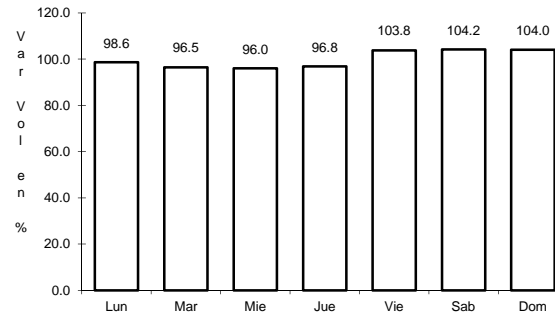
17 CARR: Tepic - Mazatlán

CLAVE: 00499

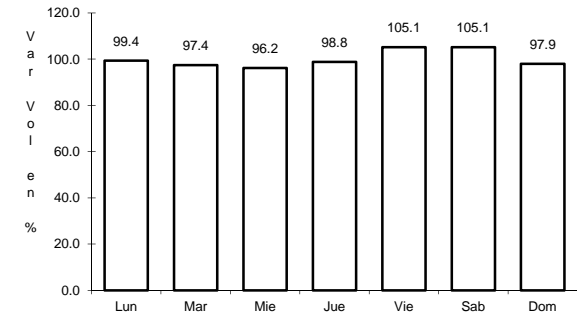
RUTA: MEX-015



Km: 136.52 Tipo: 1 Sent: 0



Km: 288.87 Tipo: 1 Sent: 1

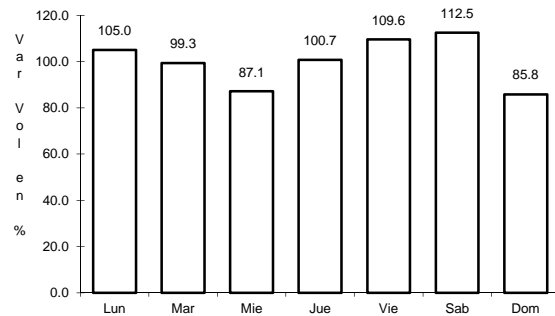


Km: 288.87 Tipo: 1 Sent: 2

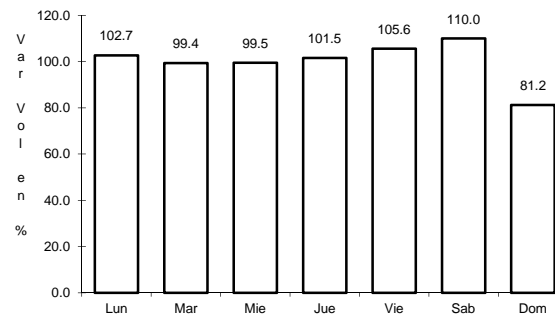
18 CARR: Tepic - Presa Aguamilpa

CLAVE: 18029

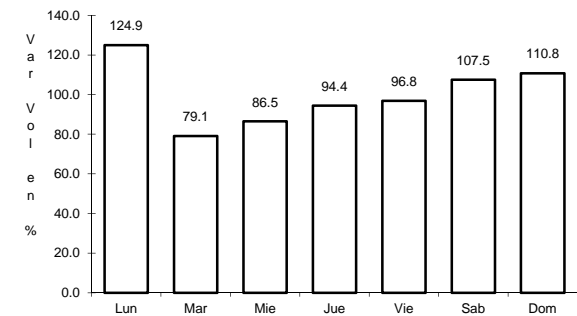
RUTA: MEX-015



Km: 0.00 Tipo: 3 Sent: 1



Km: 0.00 Tipo: 3 Sent: 2

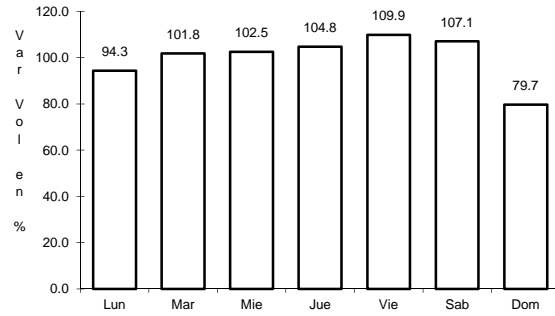


Km: 54.00 Tipo: 1 Sent: 0

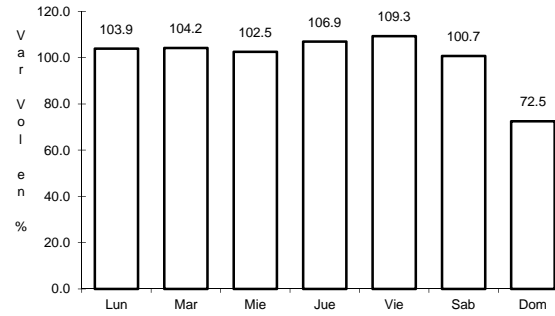
19 CARR: Tepic - Puerto Vallarta

CLAVE: 00068

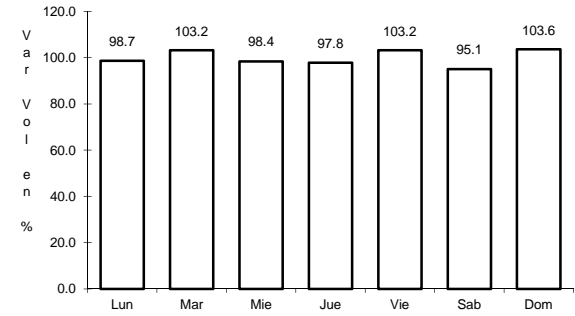
RUTA: MEX-200



Km: 0.00 Tipo: 3 Sent: 1



Km: 0.00 Tipo: 3 Sent: 2

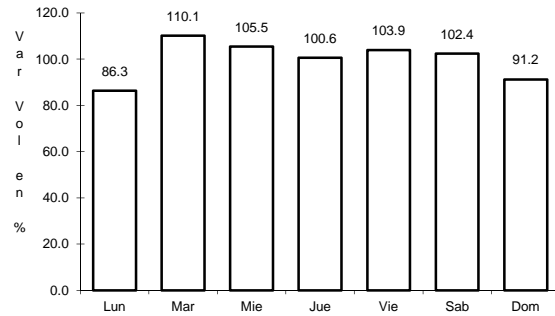


Km: 71.30 Tipo: 1 Sent: 0

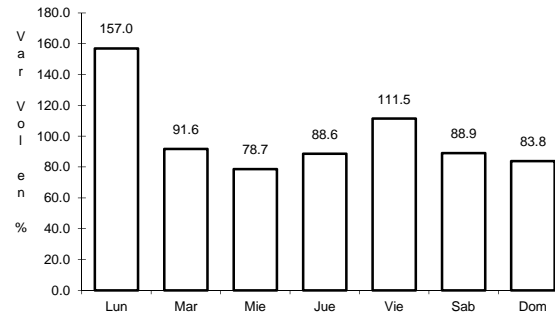
20 CARR: Chapalilla - Compostela (Cuota)

CLAVE: 18004

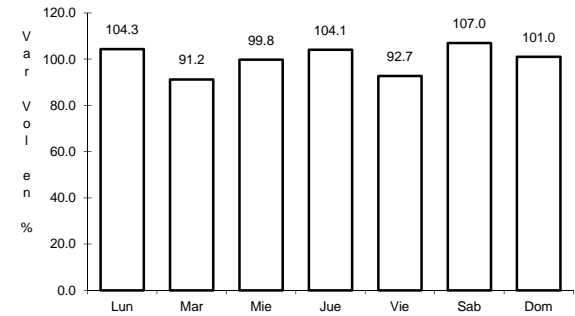
RUTA: MEX-068D



Km: 0.00 Tipo: 3 Sent: 0



Km: 36.50 Tipo: 1 Sent: 0

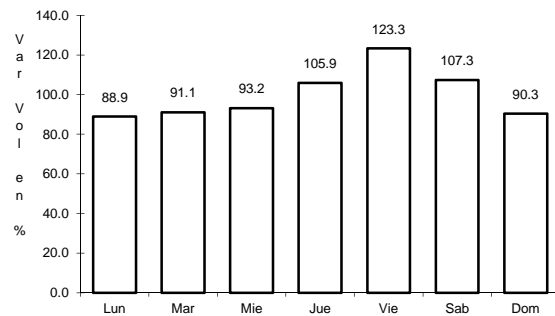


Km: 38.00 Tipo: 1 Sent: 0

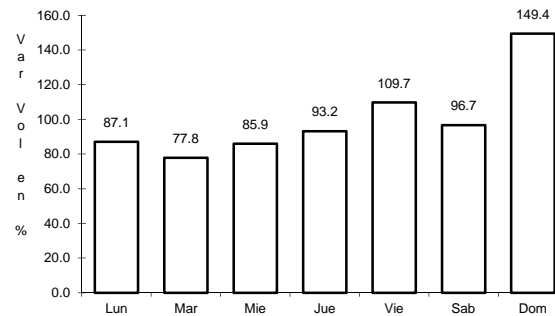
21 CARR: Guadalajara - Tepic (Cuota)

CLAVE: 00033

RUTA: MEX-015D



Km: 0.00 Tipo: 3 Sent: 1

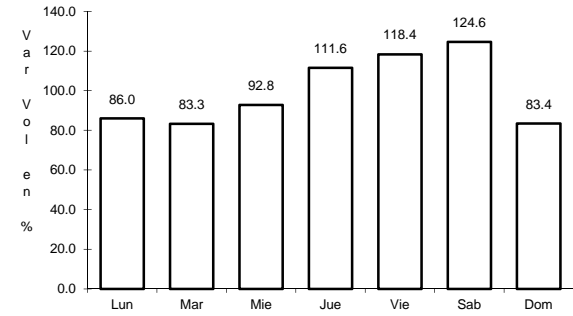
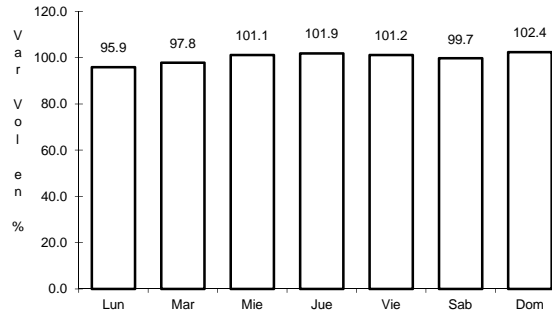
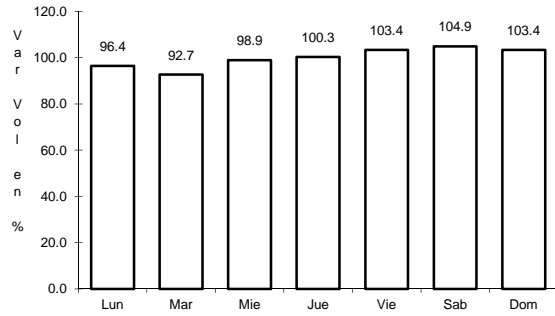


Km: 0.00 Tipo: 3 Sent: 2

22 CARR: Tepic - Villa Unión (cuota)

CLAVE: 00500

RUTA: MEX-015D



Km: 4.70 Tipo: 1 Sent: 1

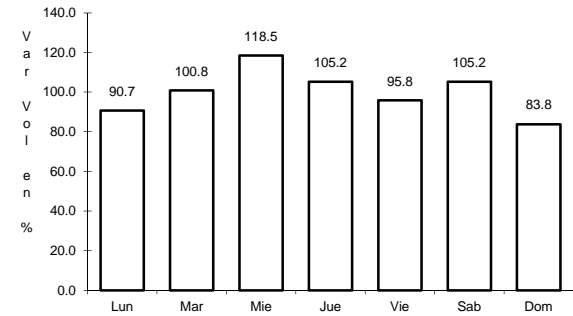
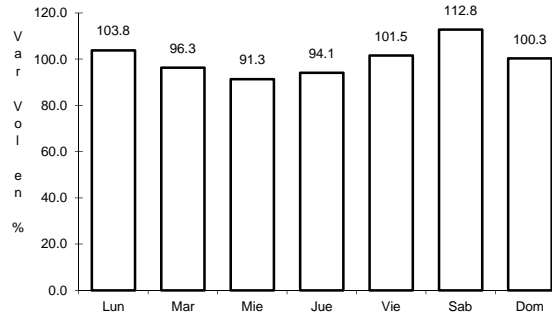
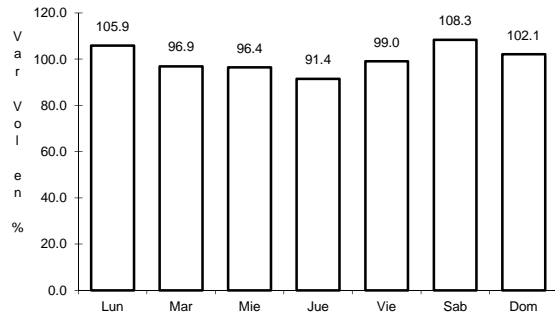
Km: 4.70 Tipo: 1 Sent: 2

Km: 240.90 Tipo: 1 Sent: 0

23 CARR: El Carrizo - La Batanga

CLAVE: 18107

RUTA: NAY-078



Km: 0.00 Tipo: 3 Sent: 0

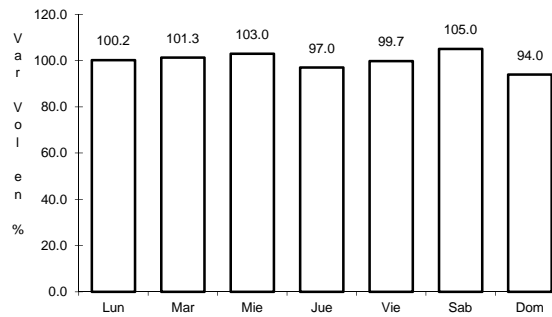
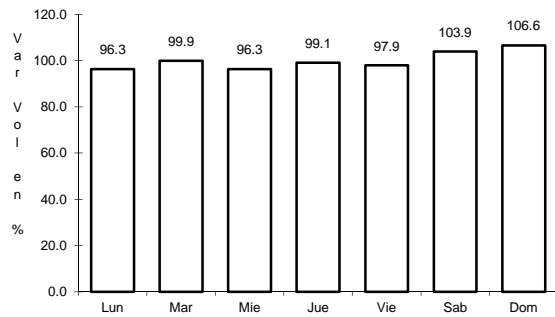
Km: 9.00 Tipo: 1 Sent: 0

Km: 25.00 Tipo: 1 Sent: 0

24 CARR: Navarrete - Sauta

CLAVE: 18013

RUTA: NAY-013



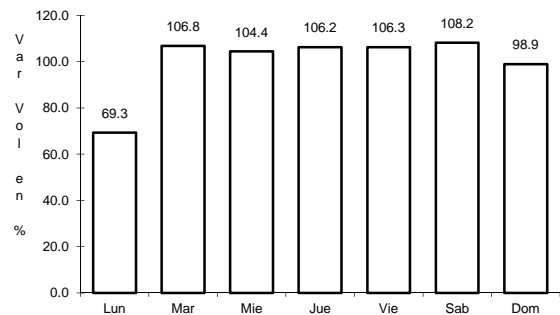
Km: 0.00 Tipo: 3 Sent: 0

Km: 7.00 Tipo: 1 Sent: 0

25 CARR: Ramal a Amado Nervo

CLAVE: 18011

RUTA: NAY



Km: 0.00

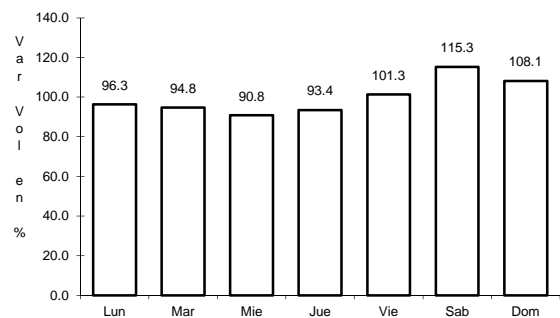
Tipo: 3

Sent: 0

26 CARR: Ramal a Bellavista

CLAVE: 18059

RUTA: NAY-059



Km: 0.00

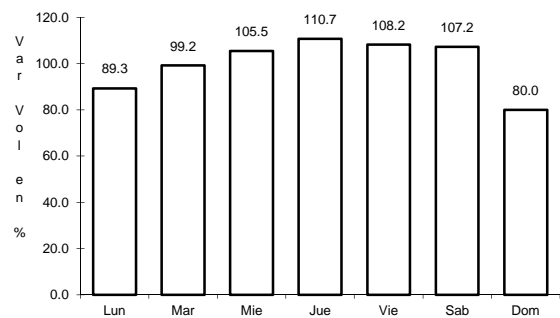
Tipo: 3

Sent: 0

27 CARR: Ramal a El Colomo

CLAVE: 18014

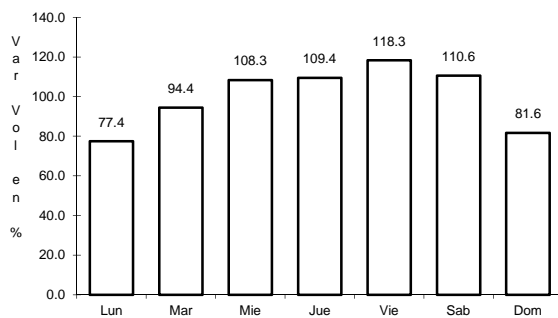
RUTA: NAY



Km: 3.00

Tipo: 1

Sent: 1



Km: 3.00

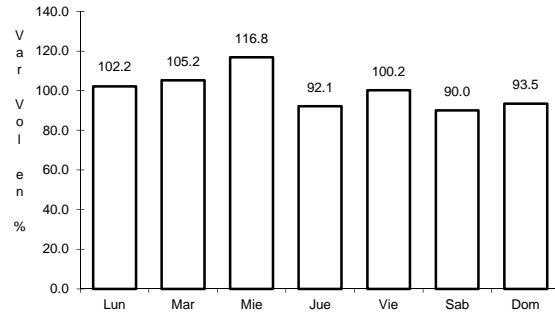
Tipo: 1

Sent: 2

28 CARR: Ramal a Estación Yago

CLAVE: 18224

RUTA: NAY



Km: 0.00

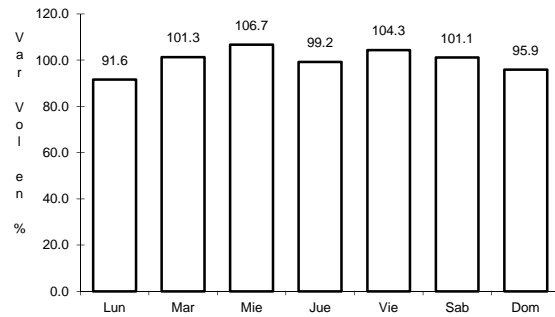
Tipo: 3

Sent: 0

29 CARR: Ramal a Ixtapán de La Concepción

CLAVE: 18233

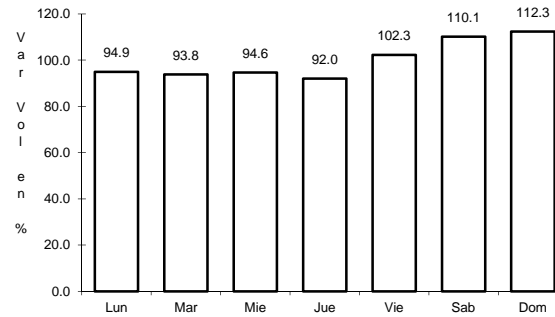
RUTA: NAY



Km: 0.00

Tipo: 3

Sent: 0



Km: 20.00

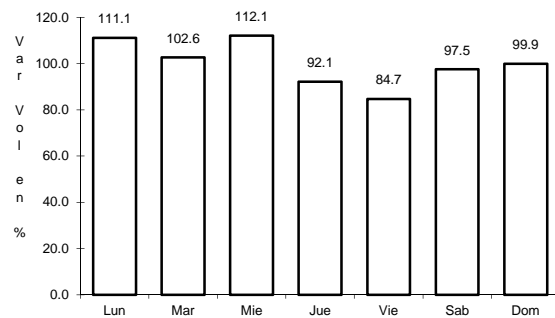
Tipo: 1

Sent: 0

30 CARR: Ramal a Milpas Viejas

CLAVE: 18007

RUTA: NAY



Km: 0.00

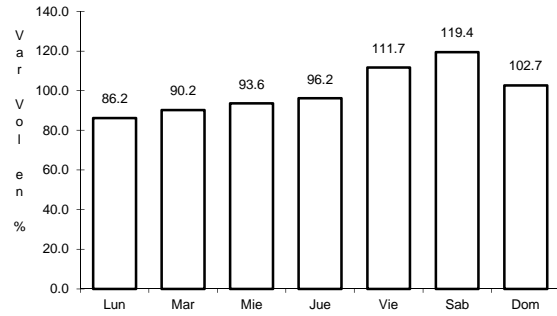
Tipo: 3

Sent: 0

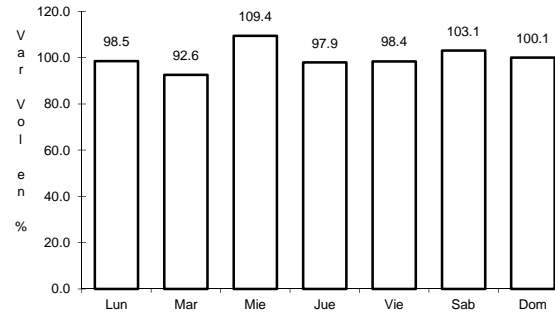
31 CARR: Ramal a Villa Hidalgo

CLAVE: 18031

RUTA: NAY



Km: 0.00 Tipo: 3 Sent: 0

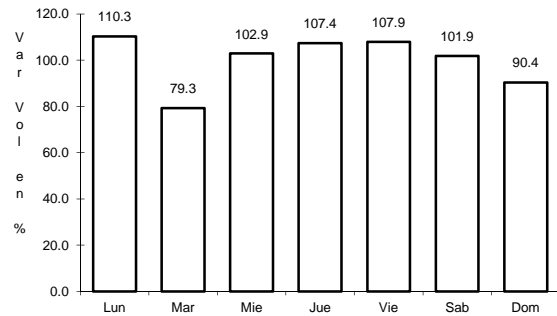


Km: 16.00 Tipo: 1 Sent: 0

32 CARR: Ramal a Volcán del Ceboruco

CLAVE: 18003

RUTA: NAY

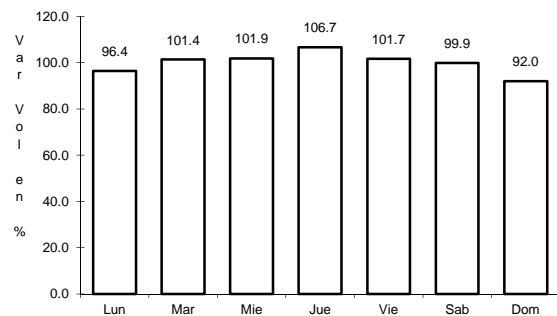


Km: 0.00 Tipo: 3 Sent: 0

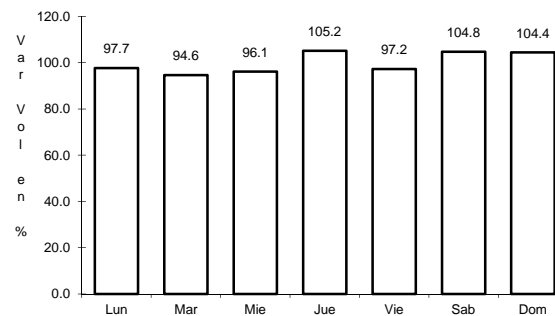
33 CARR: Tepic - Francisco I. Madero

CLAVE: 18009

RUTA: NAY-MEX



Km: 0.00 Tipo: 3 Sent: 0



Km: 9.00 Tipo: 3 Sent: 0