

HIDALGO

NO. INDICE	CARRETERA	RUTA
---RED FEDERAL LIBRE---		
1	Álamo - Huejutla de Reyes	MEX-127
2	Apizaco - Tejocotal	MEX-119
3	Ent. Colonia - Portezuelo	MEX-085
4	Ent. Jorobas - Tula	MEX-087
5	México - Pachuca (Libre)	MEX-085
6	Pachuca - Cd. Sahagún	MEX
7	Pachuca - Tempoal	MEX-105
8	Pachuca - Tuxpam	MEX-130
9	Portezuelo - Cd. Valles	MEX-085
10	Portezuelo - Palmillas	MEX-045
11	Tamazunchale - San Felipe Orizatlán	MEX-085
12	Venta de Carpio - T. C. (Pachuca - Tuxpam)	MEX-132
---RED FEDERAL DE CUOTA---		
13	Ent. Tulancingo - Venta Grande (Cuota)	MEX-132D
14	Libramiento Norte de la Ciudad de México (Cuota)	MEX-M40D
15	México - Pachuca (Cuota)	MEX-085D
16	Tejocotal - Nuevo Necaxa (Cuota)	MEX-132D
---RED FEDERAL INTEGRADA POR TRAMOS LIBRES Y DE CUOTA---		
17	México - Querétaro (Cuota)	MEX-057-MEX-057D
---RED ESTATAL LIBRE---		
18	Actopan - Progreso	HGO
19	El Saucillo - Amealco	HGO-103
20	Ent. Emiliano Zapata - Cd. Sahagún	HGO
21	Ent. Tepeji del Río - Tlahuelilpan	HGO-017
22	Ent. Tolman - Cd. Sahagún	EM-009-HGO
23	Francisco I. Madero - Tula de Allende	HGO
24	Huichapan - Tecozautla	HGO-030
25	Jilotepec - Maravillas	EM-HGO
26	Libramiento de Atotonilco El Grande	HGO
27	Lolotla - Atlapexco	HGO
28	Los Reyes - El Tephé	EM-HGO
29	Otumba - Tizayuca	EM-HGO
30	Ramal a El Chico	HGO
31	Ramal a Pachuca	HGO
32	San Alejo - Huayacocotla	HGO-051-VER-113
33	San Felipe Orizatlán - Huejutla de Reyes	HGO
34	Santo Domingo - T. C. (México - Querétaro)	EM-011-HGO
35	T. C. (Los Reyes - El Tephé) - Tizayuca	EM-HGO
36	Tepeji del Río - T.C. (México - Querétaro)	HGO
37	Tlahuelilpan - San Agustín Tlaxiaca	HGO
---CARRETERAS INTEGRADAS POR TRAMOS FEDERALES Y ESTATALES---		
38	Calpulalpan - El Ocote	MEX-HGO

HIDALGO

1 CARR: Álamo - Huejutla de Reyes

CLAVE: 00116

RUTA: MEX-127

AÑO: 2015

LUGAR	ESTACION				CLASIFICACION VEHICULAR EN PORCIENTO													COORDENADAS		
	KM	TE	SC	TDPA	M	A	B	C2	C3	T3S2	T3S3	T3S2R4	OTROS	A	B	C	K'	D	LATITUD	LONGITUD
T. C. Tihuatlán - Potrero del Llano	0.00	3	0	3777	14.5	70.5	0.2	8.0	1.5	4.0	0.8	0.1	0.4	85.0	0.2	14.8	0.073	0.503	20.941668	-97.705074
Benito Juárez	73.00	1	0	1850	4.5	84.5	0.3	6.7	0.8	2.3	0.4	0.1	0.4	89.0	0.3	10.7	0.109	0.506	20.879827	-98.196756
T. Der. Chicontepec de Tejada	78.00	3	0	1003	4.9	85.5	0.3	6.9	1.2	0.9	0.3	0.0	0.0	90.4	0.3	9.3	0.115	0.506	20.923653	-98.221439
Lim. Edos. Term. Ver. Ppia. Hgo.	78.70																			
T. C. Pachuca - Tempoal (Huejutla de Reyes)	110.00																			

2 CARR: Apizaco - Tejocotal

CLAVE: 00430

RUTA: MEX-119

AÑO: 2015

LUGAR	ESTACION				CLASIFICACION VEHICULAR EN PORCIENTO													COORDENADAS		
	KM	TE	SC	TDPA	M	A	B	C2	C3	T3S2	T3S3	T3S2R4	OTROS	A	B	C	K'	D	LATITUD	LONGITUD
Apizaco	0.00	3	1	9599	1.0	83.3	1.9	8.8	0.9	2.0	1.2	0.4	0.5	84.3	1.9	13.8	0.083	0.515	19.428158	-98.136120
Apizaco	0.00	3	2	10213	1.4	81.0	2.1	10.1	1.0	2.3	1.2	0.4	0.5	82.4	2.1	15.5	0.084	0.515	19.428150	-98.136122
T. Der. Tetla	6.60	3	0	16095	0.7	83.7	1.9	7.9	1.3	2.6	1.1	0.5	0.3	84.4	1.9	13.7	0.076	0.508	19.469050	-98.111827
T. Izq. Atlangatepec	12.15	1	0	12335	0.8	78.5	2.1	9.5	1.5	4.7	1.6	0.5	0.8	79.3	2.1	18.6	0.066	0.509	19.511267	-98.117853
Tlaxco	23.91	1	0	8505	1.9	82.4	0.7	9.0	0.6	4.3	0.4	0.1	0.6	84.3	0.7	15.0	0.063	0.509	19.605490	-98.122530
Tlaxco	23.91	3	0	5523	1.4	77.0	1.4	11.5	1.4	4.4	2.0	0.2	0.7	78.4	1.4	20.2	0.070	0.511	19.624722	-98.125649
Lim. Edos. Term. Tlax. Ppia. Pue.	34.45																			
T. Der. Tetela de Ocampo	52.20	1	0	6976	2.0	80.9	0.6	8.5	1.3	4.3	1.5	0.3	0.6	82.9	0.6	16.5	0.075	0.509	19.802057	-98.025816
Zacatlán	71.25	1	0	11207	2.8	82.0	1.0	5.9	0.6	4.7	1.5	0.5	1.0	84.8	1.0	14.2	0.066	0.502	19.914966	-97.958513
Lim. Edos. Term. Pue. Ppia. Hgo.	110.45																			
T. C. Pachuca - Tuxpam	113.15	1	0	6956	0.2	82.6	3.4	6.0	2.7	2.9	1.7	0.4	0.1	82.8	3.4	13.8	0.115	0.501	20.124410	-98.128427

3 CARR: Ent. Colonia - Portezuelo

CLAVE: 13257

RUTA: MEX-085

AÑO: 2015

LUGAR	ESTACION				CLASIFICACION VEHICULAR EN PORCIENTO													COORDENADAS		
	KM	TE	SC	TDPA	M	A	B	C2	C3	T3S2	T3S3	T3S2R4	OTROS	A	B	C	K'	D	LATITUD	LONGITUD
Ent. Colonia	0.00	3	1	23820	0.9	89.7	1.5	3.6	1.0	1.6	1.0	0.3	0.4	90.6	1.5	7.9	0.085	0.524	20.061256	-98.787052
Ent. Colonia	0.00	3	2	26367	0.7	88.6	1.7	4.2	1.1	1.9	1.1	0.3	0.4	89.3	1.7	9.0	0.077	0.524	20.061256	-98.787052
T. Der. Pachuca	8.34	3	1	16915	0.0	86.1	2.6	5.2	2.3	2.1	0.7	0.7	0.3	86.1	2.6	11.3	0.079	0.514	20.123383	-98.832817
T. Der. Pachuca	8.34	3	2	16016	0.1	89.0	2.0	5.0	1.2	1.5	0.5	0.5	0.2	89.1	2.0	8.9	0.080	0.514	20.123383	-98.832817
Actopan	34.13	1	1	12832	0.1	85.7	1.2	8.1	1.6	1.8	0.8	0.6	0.1	85.8	1.2	13.0	0.059	0.516	20.249903	-98.932722
Actopan	34.13	1	2	12414	0.1	84.3	1.8	9.1	1.3	1.4	0.8	1.0	0.2	84.4	1.8	13.8	0.068	0.516	20.249903	-98.932722
Actopan	34.13	3	1	9071	0.1	84.8	2.2	6.9	2.0	1.9	1.1	0.7	0.3	84.9	2.2	12.9	0.066	0.501	20.290456	-98.975915
Actopan	34.13	3	2	9114	0.1	83.8	2.4	7.0	2.3	2.1	1.2	0.9	0.2	83.9	2.4	13.7	0.061	0.501	20.290456	-98.975915
T. Izq. Tula	68.20	1	1	7770	0.1	87.4	2.4	3.8	1.4	2.7	1.3	0.6	0.3	87.5	2.4	10.1	0.076	0.502	20.438222	-99.161094

HIDALGO

3 CARR: Ent. Colonia - Portezuelo

CLAVE: 13257

RUTA: MEX-085

AÑO: 2015

LUGAR	ESTACION				CLASIFICACION VEHICULAR EN PORCIENTO														COORDENADAS	
	KM	TE	SC	TDPA	M	A	B	C2	C3	T3S2	T3S3	T3S2R4	OTROS	A	B	C	K'	D	LATITUD	LONGITUD
T. Izq. Tula	68.20	1	2	7709	0.2	87.2	2.6	3.7	1.7	2.7	1.1	0.6	0.2	87.4	2.6	10.0	0.090	0.502	20.438222	-99.161094
Ixmiquilpan	75.20	1	1	12007	0.0	85.6	2.7	4.9	1.8	2.2	1.4	1.1	0.3	85.6	2.7	11.7	0.066	0.533	20.465810	-99.198563
Ixmiquilpan	75.20	1	2	12161	0.0	86.3	2.5	4.9	1.6	2.5	1.2	0.5	0.5	86.3	2.5	11.2	0.071	0.533	20.465810	-99.198563
Ixmiquilpan	75.20	3	1	7977	0.2	85.9	2.3	4.7	1.3	2.9	1.5	0.9	0.3	86.1	2.3	11.6	0.069	0.500	20.479318	-99.239238
Ixmiquilpan	75.20	3	2	7990	0.2	86.2	2.2	4.9	1.3	2.9	1.5	0.6	0.2	86.4	2.2	11.4	0.074	0.500	20.479318	-99.239238
Portezuelo	82.00																			

4 CARR: Ent. Jorobas - Tula

CLAVE: 00159

RUTA: MEX-087

AÑO: 2015

LUGAR	ESTACION				CLASIFICACION VEHICULAR EN PORCIENTO														COORDENADAS	
	KM	TE	SC	TDPA	M	A	B	C2	C3	T3S2	T3S3	T3S2R4	OTROS	A	B	C	K'	D	LATITUD	LONGITUD
T. C. México - Querétaro (Cuota)	0.00	3	1	11724	0.1	84.9	2.7	4.4	1.4	2.8	1.6	1.9	0.2	85.0	2.7	12.3	0.072	0.504	19.830860	-99.245770
T. C. México - Querétaro (Cuota)	0.00	3	2	11541	0.1	84.8	2.7	6.0	1.3	2.5	1.4	1.1	0.1	84.9	2.7	12.4	0.073	0.504	19.830860	-99.245770
Lim. Edos. Term. Mex. Ppia. Hgo.	5.90																			
T. Der. Atotonilco	21.50	1	1	7435	0.1	87.6	1.2	4.5	1.0	3.5	1.3	0.6	0.2	87.7	1.2	11.1	0.076	0.505	19.968410	-99.245720
T. Der. Atotonilco	21.50	1	2	7289	0.1	84.4	1.4	5.7	1.6	4.0	1.6	0.9	0.3	84.5	1.4	14.1	0.083	0.505	19.968410	-99.245720
Tula de Allende	37.70	1	1	13828	0.1	86.5	2.5	6.2	1.3	1.6	1.1	0.5	0.2	86.6	2.5	10.9	0.083	0.503	20.057760	-99.295130
Tula de Allende	37.70	1	2	13680	0.0	87.0	2.4	3.9	1.8	2.3	1.3	1.0	0.3	87.0	2.4	10.6	0.117	0.503	20.057760	-99.295130

5 CARR: México - Pachuca (Libre)

CLAVE: 00431

RUTA: MEX-085

AÑO: 2015

LUGAR	ESTACION				CLASIFICACION VEHICULAR EN PORCIENTO														COORDENADAS	
	KM	TE	SC	TDPA	M	A	B	C2	C3	T3S2	T3S3	T3S2R4	OTROS	A	B	C	K'	D	LATITUD	LONGITUD
México	0.00																			
Lim. Edos. Term. D. F. Ppia. Mex.	9.89																			
T. Der. Pirámides	26.93	1	0	28842	0.1	84.9	3.3	6.2	1.7	2.0	1.0	0.6	0.2	85.0	3.3	11.7	0.060	0.514	19.617290	-99.010770
Venta de Carpio	27.00	3	1	23454	0.0	91.8	1.2	3.2	1.1	1.1	0.7	0.6	0.3	91.8	1.2	7.0	0.060	0.502	19.626160	-99.002840
Venta de Carpio	27.00	3	2	23664	0.0	89.2	1.3	5.3	1.4	1.2	0.6	0.7	0.3	89.2	1.3	9.5	0.059	0.502	19.626160	-99.002840
T. Der. Autopista México - Tecámac (Cuota)	37.52	1	1	25861	0.0	86.7	1.8	6.6	2.7	1.2	0.6	0.3	0.1	86.7	1.8	11.5	0.058	0.518	19.704860	-98.978160
T. Der. Autopista México - Tecámac (Cuota)	37.52	1	2	25236	0.0	90.1	1.0	5.6	1.1	0.9	0.4	0.7	0.2	90.1	1.0	8.9	0.057	0.518	19.704860	-98.978160
T. Izq. Zumpango	44.68	1	1	16346	0.0	88.0	1.7	5.0	1.7	1.3	0.8	1.2	0.3	88.0	1.7	10.3	0.058	0.513	19.760800	-98.973583
T. Izq. Zumpango	44.68	1	2	17223	0.1	87.5	1.9	5.1	2.1	1.8	0.7	0.5	0.3	87.6	1.9	10.5	0.060	0.513	19.760800	-98.973583
T. Izq. Zumpango	44.68	3	1	10516	0.1	86.8	1.2	6.6	2.4	1.7	0.3	0.7	0.2	86.9	1.2	11.9	0.068	0.552	19.775250	-98.972850
T. Izq. Zumpango	44.68	3	2	10456	0.1	86.9	1.8	5.5	2.6	1.5	0.8	0.5	0.3	87.0	1.8	11.2	0.066	0.552	19.775250	-98.972850
Lim. Edos. Term. Mex. Ppia. Hgo.	49.30																			

HIDALGO

5 CARR: México - Pachuca (Libre)

CLAVE: 00431

RUTA: MEX-085

AÑO: 2015

LUGAR	ESTACION				CLASIFICACION VEHICULAR EN PORCIENTO													COORDENADAS		
	KM	TE	SC	TDPA	M	A	B	C2	C3	T3S2	T3S3	T3S2R4	OTROS	A	B	C	K'	D	LATITUD	LONGITUD
Tizayuca	52.50	3	1	10004	0.1	88.9	1.6	5.5	1.5	1.3	0.5	0.4	0.2	89.0	1.6	9.4	0.079	0.518	19.859117	-98.967483
Tizayuca	52.50	3	2	10760	0.1	89.0	1.3	5.1	1.6	1.4	0.5	0.8	0.2	89.1	1.3	9.6	0.076	0.518	19.859117	-98.967483
T. C. México - Tizayuca (Cuota)	61.00	3	1	22253	0.0	84.2	2.8	7.2	2.2	1.9	0.7	0.7	0.3	84.2	2.8	13.0	0.081	0.520	19.895700	-98.930883
T. C. México - Tizayuca (Cuota)	61.00	3	2	24098	0.0	85.0	3.0	5.6	2.5	1.8	0.8	1.0	0.3	85.0	3.0	12.0	0.082	0.520	19.895700	-98.930883
X. C. Arco Norte de La Ciudad de México	64.20	1	1	22249	0.0	85.1	3.2	7.0	1.7	1.7	0.6	0.5	0.2	85.1	3.2	11.7	0.089	0.509	19.922100	-99.901833
X. C. Arco Norte de La Ciudad de México	64.20	1	2	23096	0.0	82.4	4.0	6.7	2.8	2.0	0.6	1.2	0.3	82.4	4.0	13.6	0.086	0.509	19.922100	-99.901833
X. C. Arco Norte de La Ciudad de México	64.20	3	1	22462	0.0	83.6	3.5	8.3	1.8	1.6	0.6	0.4	0.2	83.6	3.5	12.9	0.087	0.525	19.929383	-98.892800
X. C. Arco Norte de La Ciudad de México	64.20	3	2	24794	0.0	82.8	4.2	7.4	2.1	1.8	0.5	0.7	0.5	82.8	4.2	13.0	0.080	0.525	19.929383	-98.892800
Ent. Colonia	83.97	1	1	32754	0.0	86.0	3.3	4.1	2.5	1.7	1.0	1.3	0.1	86.0	3.3	10.7	0.063	0.526	20.052505	-98.788648
Ent. Colonia	83.97	1	2	29511	0.0	86.0	2.7	5.7	3.0	1.3	0.8	0.1	0.4	86.0	2.7	11.3	0.069	0.526	20.052505	-98.788648
X. C. Libramiento de Pachuca	86.50	1	1	36697	0.4	87.1	3.4	4.4	0.5	1.1	1.9	0.5	0.7	87.5	3.4	9.1	0.054	0.501	20.096819	-98.767517
X. C. Libramiento de Pachuca	86.50	1	2	36434	0.8	85.4	3.4	5.1	0.5	1.3	2.2	0.5	0.8	86.2	3.4	10.4	0.053	0.501	20.096819	-98.767517
Pachuca	94.00																			

6 CARR: Pachuca - Cd. Sahagún

CLAVE: 13088

RUTA: MEX

AÑO: 2015

LUGAR	ESTACION				CLASIFICACION VEHICULAR EN PORCIENTO													COORDENADAS		
	KM	TE	SC	TDPA	M	A	B	C2	C3	T3S2	T3S3	T3S2R4	OTROS	A	B	C	K'	D	LATITUD	LONGITUD
Pachuca	0.00	3	1	22332	1.1	90.3	1.0	2.5	1.0	1.6	1.6	0.3	0.6	91.4	1.0	7.6	0.075	0.503	20.094917	-98.746267
Pachuca	0.00	3	2	21857	1.0	89.9	1.0	2.7	1.0	1.7	1.8	0.3	0.6	90.9	1.0	8.1	0.087	0.503	20.094917	-98.746267
T. Der. Palma Gorda	11.00	1	1	16616	1.0	87.7	1.6	4.7	1.1	1.9	1.3	0.3	0.4	88.7	1.6	9.7	0.081	0.515	20.045833	-98.736183
T. Der. Palma Gorda	11.00	1	2	17374	0.7	87.0	1.7	5.4	1.1	2.0	1.4	0.3	0.4	87.7	1.7	10.6	0.080	0.515	20.045833	-98.736183
X. C. Venta de Carpio - Tulancingo	29.40	1	1	8779	0.2	87.4	2.3	3.3	1.8	2.7	1.4	0.6	0.3	87.6	2.3	10.1	0.068	0.507	19.886317	-98.667050
X. C. Venta de Carpio - Tulancingo	29.40	1	2	8531	0.2	88.9	2.0	3.0	1.5	2.6	1.1	0.5	0.2	89.1	2.0	8.9	0.069	0.507	19.886317	-98.667050
X. C. Venta de Carpio - Tulancingo	29.40	3	1	7676	0.1	88.6	1.9	3.4	1.3	3.0	1.1	0.4	0.2	88.7	1.9	9.4	0.066	0.508	19.866483	-98.659750
X. C. Venta de Carpio - Tulancingo	29.40	3	2	7924	0.2	86.7	1.8	3.7	1.6	3.1	1.5	1.1	0.3	86.9	1.8	11.3	0.075	0.508	19.866483	-98.659750
Cd. Sahagún	44.70																			

7 CARR: Pachuca - Tempoal

CLAVE: 00113

RUTA: MEX-105

AÑO: 2015

LUGAR	ESTACION				CLASIFICACION VEHICULAR EN PORCIENTO													COORDENADAS		
	KM	TE	SC	TDPA	M	A	B	C2	C3	T3S2	T3S3	T3S2R4	OTROS	A	B	C	K'	D	LATITUD	LONGITUD
Pachuca	0.00	3	0	6574	0.2	95.6	0.5	2.1	1.0	0.5	0.1	0.0	0.0	95.8	0.5	3.7	0.122	0.504	20.119150	-98.712500
T. Der. Omitlán de Juárez (1º Acceso)	18.20	1	0	12210	0.1	91.5	1.1	3.4	0.9	1.9	0.5	0.4	0.2	91.6	1.1	7.3	0.094	0.507	20.160783	-98.654267
Atotonilco El Grande	33.85	3	0	8855	0.1	89.3	1.7	2.9	1.4	2.6	1.3	0.3	0.4	89.4	1.7	8.9	0.079	0.502	20.296617	-98.677767

HIDALGO

7 CARR: Pachuca - Tempoal

CLAVE: 00113

RUTA: MEX-105

AÑO: 2015

LUGAR	ESTACION				CLASIFICACION VEHICULAR EN PORCIENTO													COORDENADAS		
	KM	TE	SC	TDPA	M	A	B	C2	C3	T3S2	T3S3	T3S2R4	OTROS	A	B	C	K'	D	LATITUD	LONGITUD
T. Izq. Metztlán	63.70	1	0	5439	0.3	87.7	1.8	5.3	1.8	1.5	0.8	0.7	0.1	88.0	1.8	10.2	0.094	0.506	20.468050	-98.668417
T. Izq. Metztlán	63.70	3	0	5189	0.3	87.6	2.5	4.7	1.7	1.9	0.7	0.5	0.1	87.9	2.5	9.6	0.081	0.511	20.470033	-98.668183
Metzquitlán	75.00	1	0	5438	0.2	88.4	1.8	4.9	1.4	2.0	0.8	0.3	0.2	88.6	1.8	9.6	0.083	0.510	20.529133	-98.642067
T. Izq. Zacualtipán	96.50	1	0	7773	0.2	89.2	2.0	3.7	1.6	2.0	0.7	0.5	0.1	89.4	2.0	8.6	0.076	0.517	20.647733	-98.643017
T. Izq. Zacualtipán	96.50	3	0	5774	0.1	89.1	2.0	4.0	1.4	1.7	0.9	0.6	0.2	89.2	2.0	8.8	0.092	0.514	20.656874	-98.654540
X. C. Molango - Xochicoatlán	129.80	1	0	3782	0.2	89.6	1.3	4.2	1.3	1.8	0.9	0.5	0.2	89.8	1.3	8.9	0.082	0.506	20.788750	-98.724417
X. C. Molango - Xochicoatlán	129.80	3	0	3539	0.5	91.1	1.4	3.3	1.3	1.2	0.6	0.5	0.1	91.6	1.4	7.0	0.078	0.502	20.792973	-98.725362
T. Izq. Tepehuacán de Guerrero	157.70	1	0	2498	0.4	90.1	1.3	4.0	1.2	1.9	0.6	0.3	0.2	90.5	1.3	8.2	0.082	0.521	20.965050	-98.682400
Tehuacán	199.20	1	0	2113	0.7	89.0	1.3	4.9	1.1	1.6	0.6	0.5	0.3	89.7	1.3	9.0	0.071	0.500	21.058100	-98.512533
T. Izq. Huejutla (1° Acceso)	214.60	1	0	9362	0.1	87.3	1.8	5.9	1.4	2.0	0.7	0.6	0.2	87.4	1.8	10.8	0.078	0.503	21.122983	-98.418750
T. Izq. Huejutla (1° Acceso)	214.60	3	0	8408	0.1	90.0	1.6	4.3	1.3	1.5	0.6	0.4	0.2	90.1	1.6	8.3	0.078	0.505	21.129800	-98.408217
Lim. Edos. Term. Hgo. Ppia. Ver.	217.20																			
T. C. Alazán - Canoas	260.68	1	0	1946	2.2	72.4	2.6	12.3	2.3	2.9	3.3	1.6	0.4	74.6	2.6	22.8	0.079	0.511	21.491822	-98.357617

8 CARR: Pachuca - Tuxpam

CLAVE: 00608

RUTA: MEX-130

AÑO: 2015

LUGAR	ESTACION				CLASIFICACION VEHICULAR EN PORCIENTO													COORDENADAS		
	KM	TE	SC	TDPA	M	A	B	C2	C3	T3S2	T3S3	T3S2R4	OTROS	A	B	C	K'	D	LATITUD	LONGITUD
Pachuca	0.00																			
X. C. Libramiento de Pachuca	2.60	3	1	19457	0.0	97.1	0.3	1.3	0.5	0.6	0.2	0.0	0.0	97.1	0.3	2.6	0.072	0.509	20.093083	-98.714533
X. C. Libramiento de Pachuca	2.60	3	2	18739	0.0	96.3	0.4	1.7	1.0	0.4	0.2	0.0	0.0	96.3	0.4	3.3	0.078	0.509	20.093083	-98.714533
T. Izq. Pachuquilla (1° Acceso)	7.00	1	1	14892	1.0	91.5	1.1	2.3	0.7	1.4	1.3	0.2	0.5	92.5	1.1	6.4	0.086	0.510	20.077433	-98.709300
T. Izq. Pachuquilla (1° Acceso)	7.00	1	2	15580	0.9	90.9	1.3	2.6	0.7	1.5	1.4	0.2	0.5	91.8	1.3	6.9	0.082	0.510	20.077433	-98.709300
T. Izq. Pachuquilla (2° Acceso)	10.50	1	1	8977	0.1	94.4	1.0	2.0	1.4	0.8	0.3	0.0	0.0	94.5	1.0	4.5	0.088	0.503	20.066600	-98.675300
T. Izq. Pachuquilla (2° Acceso)	10.50	1	2	9089	0.1	92.9	0.9	3.0	1.8	0.9	0.4	0.0	0.0	93.0	0.9	6.1	0.086	0.503	20.066600	-98.675300
T. Der. Cd. Sahagún	16.59	1	1	7719	0.1	91.5	1.9	3.5	1.8	0.7	0.3	0.2	0.0	91.6	1.9	6.5	0.089	0.509	20.053167	-98.623433
T. Der. Cd. Sahagún	16.59	1	2	7460	0.1	91.0	1.6	4.5	1.4	0.7	0.3	0.3	0.1	91.1	1.6	7.3	0.085	0.509	20.053167	-98.623433
T. C. Venta de Carpio - Tulancingo	36.45	1	1	7898	0.1	89.9	1.8	5.1	1.6	0.8	0.3	0.3	0.1	90.0	1.8	8.2	0.078	0.509	20.056258	-98.461276
T. C. Venta de Carpio - Tulancingo	36.45	1	2	7619	0.1	89.8	1.8	4.8	1.9	0.9	0.3	0.3	0.1	89.9	1.8	8.3	0.082	0.509	20.056258	-98.461276
T. C. Venta de Carpio - Tulancingo	36.45	3	1	12952	0.1	89.5	2.2	4.0	2.1	1.0	0.5	0.5	0.1	89.6	2.2	8.2	0.073	0.508	20.063337	-98.438879
T. C. Venta de Carpio - Tulancingo	36.45	3	2	12558	0.1	90.0	1.2	4.8	1.6	0.9	0.4	0.9	0.1	90.1	1.2	8.7	0.069	0.508	20.063337	-98.438879
T. Izq. Libramiento de Tulancingo	53.70	3	1	7467	0.1	89.9	1.6	4.4	1.8	1.0	0.8	0.3	0.1	90.0	1.6	8.4	0.074	0.513	20.151602	-98.285124
T. Izq. Libramiento de Tulancingo	53.70	3	2	7097	0.2	86.6	2.7	6.0	2.5	0.9	0.4	0.6	0.1	86.8	2.7	10.5	0.078	0.513	20.151658	-98.285165
T. Izq. Huayacocotla	66.42	3	0	10779	0.1	89.6	1.9	4.7	1.9	1.0	0.4	0.3	0.1	89.7	1.9	8.4	0.084	0.504	20.157500	-98.278800
Lim. Edos. Term. Hgo. Ppia. Pue.	83.18																			

HIDALGO

8 CARR: Pachuca - Tuxpam

CLAVE: 00608

ruta: MEX-130

AÑO: 2015

LUGAR	ESTACION				CLASIFICACION VEHICULAR EN PORCIENTO														COORDENADAS	
	KM	TE	SC	TDPA	M	A	B	C2	C3	T3S2	T3S3	T3S2R4	OTROS	A	B	C	K'	D	LATITUD	LONGITUD
T. Der. Huauchinango (1º Acceso)	94.00	1	0	5682	1.7	82.2	2.1	11.4	0.8	0.7	0.7	0.1	0.3	83.9	2.1	14.0	0.061	0.512	20.168916	-98.074272
T. Der. Huauchinango (2º Acceso)	100.00	3	0	8321	2.0	75.4	3.1	12.4	0.8	3.5	1.5	0.5	0.8	77.4	3.1	19.5	0.059	0.519	20.193562	-98.035909
Villa Ávila Camacho	141.75	1	0	5983	1.4	65.7	6.2	9.2	3.5	6.5	3.6	2.7	1.2	67.1	6.2	26.7	0.070	0.500	20.383112	-97.884229
Villa Ávila Camacho	141.75	3	0	7272	1.3	66.8	5.6	11.4	2.9	5.9	3.0	2.1	1.0	68.1	5.6	26.3	0.071	0.502	20.395494	-97.871857
Piedras Negras	158.70	1	0	3618	1.5	61.8	5.0	14.6	4.1	7.5	3.0	1.6	0.9	63.3	5.0	31.7	0.063	0.511	20.438443	-97.763484
T. Izq. Venustiano Carranza	174.10	3	0	5528	1.2	64.8	4.4	14.4	3.5	6.2	3.8	1.0	0.7	66.0	4.4	29.6	0.062	0.508	20.483104	-97.636176
Lim. Edos. Term. Pue. Ppia. Ver.	180.00																			
T. Der. Poza Rica	197.00	1	0	16095	2.0	77.6	1.0	12.0	2.1	2.5	2.0	0.4	0.4	79.6	1.0	19.4	0.075	0.506	20.534439	-97.487255
T. Der. Poza Rica	197.00	3	0	22641	1.4	77.9	3.3	11.1	2.4	1.6	1.5	0.5	0.3	79.3	3.3	17.4	0.066	0.510	20.561038	-97.476927
Tihuatlán	217.00	1	0	11775	0.9	71.2	2.4	10.4	2.2	7.0	2.5	2.3	1.1	72.1	2.4	25.5	0.072	0.503	20.698846	-97.527742
Tihuatlán	217.00	3	0	2973	5.4	76.9	0.5	10.8	1.2	3.0	1.4	0.4	0.4	82.3	0.5	17.2	0.073	0.518	20.721125	-97.527642
T. C. Tihuatlán - Tuxpam (Cuota)	232.50	1	0	2191	6.9	73.8	0.4	11.7	1.7	2.9	1.9	0.5	0.2	80.7	0.4	18.9	0.074	0.502	20.814179	-97.477053

9 CARR: Portezuelo - Cd. Valles

CLAVE: 00023

ruta: MEX-085

AÑO: 2015

LUGAR	ESTACION				CLASIFICACION VEHICULAR EN PORCIENTO														COORDENADAS	
	KM	TE	SC	TDPA	M	A	B	C2	C3	T3S2	T3S3	T3S2R4	OTROS	A	B	C	K'	D	LATITUD	LONGITUD
Portezuelo	0.00	3	0	5610	0.2	91.8	1.1	3.2	1.1	1.6	0.5	0.3	0.2	92.0	1.1	6.9	0.080	0.507	20.488257	-99.298489
T. Der. Tasquillo (2º Acceso)	10.50	1	0	4232	0.3	90.1	1.5	4.5	1.4	1.2	0.4	0.3	0.3	90.4	1.5	8.1	0.085	0.510	20.546220	-99.320481
T. Izq. Zimapán (1º Acceso)	32.00	1	0	5212	0.1	91.7	1.7	3.2	1.3	1.0	0.5	0.2	0.3	91.8	1.7	6.5	0.077	0.503	20.702945	-99.334330
T. Izq. Zimapán (1º Acceso)	32.00	3	0	2460	1.4	86.2	1.2	6.5	1.5	1.9	1.0	0.1	0.2	87.6	1.2	11.2	0.070	0.522	20.705761	-99.336108
La Estancia	41.00	3	0	1719	0.5	88.3	1.8	5.5	2.2	0.9	0.3	0.3	0.2	88.8	1.8	9.4	0.091	0.513	20.777728	-99.309665
Trancas	51.00	3	0	1493	0.4	88.1	2.0	5.6	2.1	1.0	0.4	0.2	0.2	88.5	2.0	9.5	0.084	0.505	20.799216	-99.266012
Jacala	98.60	3	0	2235	0.4	92.3	1.4	3.8	1.1	0.7	0.2	0.1	0.0	92.7	1.4	5.9	0.076	0.503	21.003443	-99.184922
Zacate Grande	143.10	1	0	1167	0.7	84.1	2.8	8.6	1.8	0.9	0.4	0.4	0.3	84.8	2.8	12.4	0.075	0.521	21.111098	-99.001790
T. Izq. Pisaflares	154.00	3	0	1848	0.3	87.4	2.0	6.0	2.3	1.3	0.4	0.2	0.1	87.7	2.0	10.3	0.077	0.505	21.153637	-98.945019
Lim. Edos. Term. Hgo. Ppia. S. L. P.	168.63																			
Tamazunchale	192.80	1	0	4713	13.3	68.5	1.9	10.8	0.9	3.2	0.7	0.1	0.6	81.8	1.9	16.3	0.084	0.504	21.262228	-98.800440
T. Izq. Xilitla	228.75	1	0	5277	5.3	81.7	1.0	5.2	1.0	3.2	1.5	0.3	0.8	87.0	1.0	12.0	0.078	0.509	21.444614	-98.926952
T. Izq. Xilitla	228.75	3	0	4900	3.7	77.3	2.3	9.9	1.7	3.3	0.8	0.3	0.7	81.0	2.3	16.7	0.083	0.511	21.445893	-98.929316
T. Izq. Aquismón	252.50	1	0	6179	2.9	78.2	1.4	10.0	1.9	3.7	1.1	0.2	0.6	81.1	1.4	17.5	0.076	0.501	21.621533	-98.987578
Agua Hedionda	265.00	1	0	5006	1.9	75.4	1.9	11.9	3.3	3.0	1.5	0.3	0.8	77.3	1.9	20.8	0.083	0.504	21.727354	-98.963989
Cd. Valles	300.00	1	0	10962	2.8	77.0	0.9	11.0	1.3	5.1	0.8	0.2	0.9	79.8	0.9	19.3	0.073	0.508	21.959102	-98.998735

HIDALGO

10 CARR: Portezuelo - Palmillas

CLAVE: 00194

RUTA: MEX-045

AÑO: 2015

LUGAR	ESTACION				CLASIFICACION VEHICULAR EN PORCIENTO														COORDENADAS	
	KM	TE	SC	TDPA	M	A	B	C2	C3	T3S2	T3S3	T3S2R4	OTROS	A	B	C	K'	D	LATITUD	LONGITUD
Portezuelo	0.00	3	1	4661	0.4	80.5	3.3	4.8	2.2	4.3	2.8	1.3	0.4	80.9	3.3	15.8	0.077	0.501	20.486447	-99.302078
Portezuelo	0.00	3	2	4639	0.3	81.8	3.1	5.1	2.1	4.6	2.1	0.6	0.3	82.1	3.1	14.8	0.072	0.501	20.486447	-99.302078
Jonacapa	29.41	3	0	6959	0.4	68.3	5.0	9.6	3.7	7.2	3.9	1.5	0.4	68.7	5.0	26.3	0.064	0.503	20.435536	-99.536894
Huichapan	45.10	1	0	9097	0.2	77.3	4.0	6.2	2.4	5.3	2.9	1.2	0.5	77.5	4.0	18.5	0.073	0.509	20.392095	-99.638728
T. Izq. Nopala	56.15	1	0	8543	0.2	78.3	3.9	5.2	2.6	4.8	2.9	1.7	0.4	78.5	3.9	17.6	0.074	0.501	20.318207	-99.713145
Lim. Edos. Term. Hgo. Ppia. Qro.	71.40																			
Palmillas	80.00	1	0	8958	0.2	79.3	2.4	6.1	2.6	6.1	2.3	0.8	0.2	79.5	2.4	18.1	0.077	0.510	20.325070	-99.930960

11 CARR: Tamazunchale - San Felipe Orizatlán

CLAVE: 00609

RUTA: MEX-085

AÑO: 2015

LUGAR	ESTACION				CLASIFICACION VEHICULAR EN PORCIENTO														COORDENADAS	
	KM	TE	SC	TDPA	M	A	B	C2	C3	T3S2	T3S3	T3S2R4	OTROS	A	B	C	K'	D	LATITUD	LONGITUD
T. C. Portezuelo - Cd. Valles	0.00	3	0	9768	17.2	65.2	0.4	8.1	0.5	5.9	1.2	0.5	1.0	82.4	0.4	17.2	0.078	0.506	21.250134	-98.767185
Lim. Edos. Term. S. L. P. Ppia. Hgo.	18.50																			
San Felipe Orizatlán	27.10	1	0	2043	0.4	90.6	1.7	4.2	1.0	1.4	0.4	0.2	0.1	91.0	1.7	7.3	0.086	0.502	21.170067	-98.617450

12 CARR: Venta de Carpio - T. C. (Pachuca - Tuxpam)

CLAVE: 00455

RUTA: MEX-132

AÑO: 2015

LUGAR	ESTACION				CLASIFICACION VEHICULAR EN PORCIENTO														COORDENADAS	
	KM	TE	SC	TDPA	M	A	B	C2	C3	T3S2	T3S3	T3S2R4	OTROS	A	B	C	K'	D	LATITUD	LONGITUD
T. C. México - Pachuca (Libre)	0.00																			
T. Der. Texcoco	6.42	3	1	11950	0.1	90.4	1.2	4.5	1.1	1.4	0.5	0.6	0.2	90.5	1.2	8.3	0.066	0.502	19.610780	-98.946490
T. Der. Texcoco	6.42	3	2	12059	0.1	91.7	1.3	3.1	1.1	1.3	0.5	0.7	0.2	91.8	1.3	6.9	0.062	0.502	19.610780	-98.946490
Tepexpan	7.57	3	1	9421	0.1	91.5	1.6	2.6	1.0	1.5	0.7	0.8	0.2	91.6	1.6	6.8	0.076	0.500	19.619970	-98.935070
Tepexpan	7.57	3	2	9435	0.1	88.4	1.7	5.2	1.5	1.8	0.7	0.4	0.2	88.5	1.7	9.8	0.073	0.500	19.619970	-98.935070
Acolman	12.42	1	0	12113	0.2	89.3	1.5	3.8	1.0	2.8	0.7	0.5	0.2	89.5	1.5	9.0	0.076	0.506	19.632840	-98.929390
Teotihuacán	20.70	3	0	21327	0.1	89.2	1.8	4.1	1.2	2.1	1.0	0.3	0.2	89.3	1.8	8.9	0.076	0.510	19.681540	-98.863230
T. Der. Otumba	31.79	1	0	14843	1.5	83.6	3.0	4.8	1.3	3.2	1.0	0.6	1.0	85.1	3.0	11.9	0.062	0.503	19.718086	-98.801444
T. Der. Otumba	31.79	3	0	9895	1.0	80.8	3.0	8.2	1.4	3.6	0.9	0.5	0.6	81.8	3.0	15.2	0.056	0.529	19.719384	-98.796657
X. C. Tizayuca - Otumba	37.85	1	1	12403	0.0	88.9	1.9	4.2	1.0	2.9	0.6	0.3	0.2	88.9	1.9	9.2	0.111	0.517	19.744683	-98.763483
X. C. Tizayuca - Otumba	37.85	1	2	14157	0.1	82.7	2.7	7.9	1.4	3.1	1.1	0.7	0.3	82.8	2.7	14.5	0.090	0.517	19.744683	-98.763483
X. C. Tizayuca - Otumba	37.85	3	1	11179	0.1	86.7	1.6	5.2	2.0	2.8	1.0	0.4	0.2	86.8	1.6	11.6	0.101	0.531	19.755750	-98.753033
X. C. Tizayuca - Otumba	37.85	3	2	12676	0.1	86.8	2.4	4.2	1.5	3.0	1.1	0.6	0.3	86.9	2.4	10.7	0.109	0.531	19.755750	-98.753033
X. C. Arco Norte de La Ciudad de México	48.00	1	1	10149	0.0	87.8	2.2	5.1	1.1	2.0	1.0	0.6	0.2	87.8	2.2	10.0	0.091	0.508	19.828933	-98.704617
X. C. Arco Norte de La Ciudad de México	48.00	1	2	10472	0.1	89.1	2.1	3.4	1.2	1.9	1.0	0.9	0.3	89.2	2.1	8.7	0.096	0.508	19.828933	-98.704617

HIDALGO

12 CARR: Venta de Carpio - T. C. (Pachuca - Tuxpam)

CLAVE: 00455

RUTA: MEX-132

AÑO: 2015

LUGAR	ESTACION				CLASIFICACION VEHICULAR EN PORCIENTO													COORDENADAS		
	KM	TE	SC	TDPA	M	A	B	C2	C3	T3S2	T3S3	T3S2R4	OTROS	A	B	C	K'	D	LATITUD	LONGITUD
X. C. Arco Norte de La Ciudad de México	48.00	3	1	8890	0.1	81.1	4.5	6.7	2.8	2.8	1.1	0.6	0.3	81.2	4.5	14.3	0.116	0.505	19.838900	-98.694300
X. C. Arco Norte de La Ciudad de México	48.00	3	2	9066	0.1	84.8	4.0	5.2	2.2	2.1	1.0	0.4	0.2	84.9	4.0	11.1	0.122	0.505	19.838900	-98.694300
Lim. Edos. Term. Mex. Ppia. Hgo.	51.00																			
X. C. Pachuca - Cd. Sahagún	54.00	3	1	9561	0.1	84.4	3.1	5.6	2.2	2.5	1.3	0.6	0.2	84.5	3.1	12.4	0.097	0.510	19.879850	-98.661000
X. C. Pachuca - Cd. Sahagún	54.00	3	2	9958	0.1	82.8	3.6	5.3	2.4	3.2	1.6	0.7	0.3	82.9	3.6	13.5	0.104	0.510	19.879850	-98.661000
X. C. Calpulalpan - El Ocote	64.17	1	1	8080	0.1	83.1	3.5	5.7	2.5	2.8	1.1	0.9	0.3	83.2	3.5	13.3	0.094	0.511	19.918267	-98.585533
X. C. Calpulalpan - El Ocote	64.17	1	2	8432	0.1	84.4	4.2	4.1	2.3	2.8	1.2	0.5	0.4	84.5	4.2	11.3	0.098	0.511	19.918267	-98.585533
X. C. Calpulalpan - El Ocote	64.17	3	1	8534	0.1	79.6	5.6	6.8	2.9	2.3	1.6	0.7	0.4	79.7	5.6	14.7	0.074	0.512	19.925395	-98.576821
X. C. Calpulalpan - El Ocote	64.17	3	2	8972	0.1	79.4	4.0	6.4	2.8	3.9	1.8	1.2	0.4	79.5	4.0	16.5	0.098	0.512	19.925396	-98.576821
T. C. Pachuca - Tuxpam	84.08	1	1	10625	0.1	84.1	2.6	5.6	2.0	3.0	1.7	0.6	0.3	84.2	2.6	13.2	0.082	0.502	20.050190	-98.462175
T. C. Pachuca - Tuxpam	84.08	1	2	10536	0.1	84.0	3.4	4.6	2.6	2.7	1.8	0.6	0.2	84.1	3.4	12.5	0.095	0.502	20.050190	-98.462175

13 CARR: Ent. Tulancingo - Venta Grande (Cuota)

CLAVE: 00026

RUTA: MEX-132D

AÑO: 2015

LUGAR	ESTACION				CLASIFICACION VEHICULAR EN PORCIENTO													COORDENADAS		
	KM	TE	SC	TDPA	M	A	B	C2	C3	T3S2	T3S3	T3S2R4	OTROS	A	B	C	K'	D	LATITUD	LONGITUD
T. C. Pachuca - Tuxpam	0.00																			
T. Izq. Acatlán	7.80	1	0	11290	0.2	82.7	4.6	5.3	2.3	2.8	1.3	0.6	0.2	82.9	4.6	12.5	0.074	0.510	20.105833	-98.405233
T. Izq. Acatlán	7.80	3	0	10319	0.2	83.5	3.9	5.5	2.5	2.1	1.5	0.6	0.2	83.7	3.9	12.4	0.085	0.502	20.105833	-98.405233
X. C. Pachuca - Tuxpam	21.80	1	0	9015	0.2	80.6	4.5	6.4	2.2	3.5	1.9	0.5	0.2	80.8	4.5	14.7	0.096	0.504	20.149033	-98.294517
Caseta de Cobro San Alejo (Tejocotal)	21.80	2	0	7184	0.5	74.9	6.3	4.4	4.7	4.6	1.7	2.3	0.6	75.4	6.3	18.3	0.115	0.500	20.147597	-98.285760
T. C. Tlaxco - Tejocotal (Cuota)	39.60	1	0	9040	0.3	82.5	3.8	5.7	2.1	3.7	1.3	0.4	0.2	82.8	3.8	13.4	0.091	0.507	20.140283	-98.130333

14 CARR: Libramiento Norte de la Ciudad de México (Cuota)

CLAVE: 0902

RUTA: MEX-M40D

AÑO: 2015

LUGAR	ESTACION				CLASIFICACION VEHICULAR EN PORCIENTO													COORDENADAS		
	KM	TE	SC	TDPA	M	A	B	C2	C3	T3S2	T3S3	T3S2R4	OTROS	A	B	C	K'	D	LATITUD	LONGITUD
T. C. Toluca - Palmillas	0.00																			
X. C. Toluca - Palmillas	12.90	1	1	2681	0.3	65.1	2.5	7.2	2.4	16.5	4.2	1.4	0.4	65.4	2.5	32.1	0.082	0.505	19.916200	-99.851100
X. C. Toluca - Palmillas	12.90	1	2	2733	0.4	64.5	3.7	5.3	3.9	16.1	4.5	1.3	0.3	64.9	3.7	31.4	0.075	0.505	19.916200	-99.851100
X. C. Toluca - Palmillas	12.90	3	1	2590	0.3	61.9	3.8	7.9	3.6	16.7	3.5	1.6	0.7	62.2	3.8	34.0	0.084	0.507	19.923080	-99.838190
X. C. Toluca - Palmillas	12.90	3	2	2660	0.3	60.8	4.1	7.6	3.7	17.9	2.9	2.5	0.2	61.1	4.1	34.8	0.077	0.507	19.923080	-99.838190
C. P. Jilotepec	48.70	1	1	3274	0.2	65.5	3.4	6.2	2.3	15.8	3.6	2.3	0.7	65.7	3.4	30.9	0.096	0.508	19.970160	-99.537290
C. P. Jilotepec	48.70	1	2	3166	0.2	65.9	2.5	6.2	2.4	15.9	3.8	2.5	0.6	66.1	2.5	31.4	0.075	0.508	19.970160	-99.537290
C. P. Jilotepec	48.70	3	1	3680	0.1	65.0	3.6	6.4	2.2	16.3	3.9	2.2	0.3	65.1	3.6	31.3	0.089	0.514	19.978470	-99.526040

HIDALGO

14 CARR : Libramiento Norte de la Ciudad de México (Cuota)

CLAVE: 0902

RUTA: MEX-M40D

AÑO : 2015

LUGAR	ESTACION				CLASIFICACION VEHICULAR EN PORCIENTO														COORDENADAS	
	KM	TE	SC	TDPA	M	A	B	C2	C3	T3S2	T3S3	T3S2R4	OTROS	A	B	C	K'	D	LATITUD	LONGITUD
C. P. Jilotepec	48.70	3	2	3894	0.1	68.2	3.2	6.4	1.8	14.7	2.7	2.6	0.3	68.3	3.2	28.5	0.071	0.514	19.978470	-99.526040
X. C. México - Querétaro (Cuota)	54.00																			
X. C. México - Querétaro	54.00	3	1	6170	0.1	64.7	4.0	7.0	2.4	14.4	3.6	3.1	0.7	64.8	4.0	31.2	0.084	0.501	20.002970	-99.483740
X. C. México - Querétaro	54.00	3	2	6194	0.1	66.1	4.4	5.7	2.8	14.3	4.4	2.0	0.2	66.2	4.4	29.4	0.088	0.501	20.002970	-99.483740
Caseta de Cobro Querétaro	55.00	3	1	6634	0.2	55.6	2.4	4.9	6.7	16.9	4.3	7.5	1.5	55.8	2.4	41.8	0.067	0.500	19.996131	-99.490435
Caseta de Cobro Querétaro	55.00	3	2	6634	0.2	55.6	2.4	4.9	6.7	16.9	4.3	7.5	1.5	55.8	2.4	41.8	0.067	0.500	19.996131	-99.490435
Lim. Edos. Term. Mex. Ppia. Hgo.	60.72																			
X. C. Ent. Tepeji del Río - Tlahuelilpan	79.00	1	1	5845	0.1	64.6	2.7	5.7	2.8	15.7	5.8	2.2	0.4	64.7	2.7	32.6	0.072	0.502	20.097570	-99.290090
X. C. Ent. Tepeji del Río - Tlahuelilpan	79.00	1	2	5806	0.2	63.5	2.0	6.0	3.0	17.4	5.3	2.2	0.4	63.7	2.0	34.3	0.078	0.502	20.097570	-99.290090
X. C. Ent. Tepeji del Río - Tlahuelilpan	79.00	3	1	7002	0.1	69.0	1.3	5.3	1.2	14.5	5.6	2.7	0.3	69.1	1.3	29.6	0.073	0.500	20.097300	-99.276950
X. C. Ent. Tepeji del Río - Tlahuelilpan	79.00	3	2	6991	0.1	69.4	2.3	5.0	1.2	15.5	5.0	1.2	0.3	69.5	2.3	28.2	0.075	0.500	20.097300	-99.276950
X. C. Los Reyes - El Tephé	86.40	1	1	6915	0.1	65.4	4.7	7.0	2.4	10.3	4.7	4.7	0.7	65.5	4.7	29.8	0.077	0.509	20.069186	-99.226512
X. C. Los Reyes - El Tephé	86.40	1	2	7166	0.1	65.7	4.5	7.4	3.6	11.4	4.8	2.2	0.3	65.8	4.5	29.7	0.074	0.509	20.069186	-99.226512
X. C. Los Reyes - El Tephé	86.40	3	1	7221	0.1	65.5	4.7	7.1	3.5	10.8	4.6	3.1	0.6	65.6	4.7	29.7	0.076	0.503	20.064270	-99.211927
X. C. Los Reyes - El Tephé	86.40	3	2	7297	0.1	65.0	5.4	7.0	3.8	11.2	4.1	2.8	0.6	65.1	5.4	29.5	0.089	0.503	20.064270	-99.211927
Lim. Edos. Term. Hgo. Ppia. Mex.	95.75																			
X. C. (Los Reyes - El Tephé) - Tianguistongo	108.60	1	1	7041	0.1	66.0	3.6	5.2	3.6	15.0	3.3	2.4	0.8	66.1	3.6	30.3	0.074	0.525	19.956533	-99.057248
X. C. (Los Reyes - El Tephé) - Tianguistongo	108.60	1	2	6867	0.1	61.3	3.4	8.3	3.7	16.6	3.8	2.5	0.3	61.4	3.4	35.2	0.076	0.525	19.956533	-99.057248
X. C. (Los Reyes - El Tephé) - Tianguistongo	108.60	3	1	7586	0.0	66.0	3.5	9.2	2.0	12.3	3.0	3.3	0.7	66.0	3.5	30.5	0.071	0.506	19.955190	-99.050301
X. C. (Los Reyes - El Tephé) - Tianguistongo	108.60	3	2	7391	0.1	69.2	3.9	8.0	2.3	10.7	3.4	2.2	0.2	69.3	3.9	26.8	0.073	0.506	19.955190	-99.050301
Lim. Edos. Term. Mex. Ppia. Hgo.	115.89																			
X. C. México - Pachuca	127.30	1	1	7187	0.1	66.2	3.8	6.6	4.0	12.3	3.6	2.8	0.6	66.3	3.8	29.9	0.072	0.510	19.931204	-98.897764
X. C. México - Pachuca	127.30	1	2	6911	0.1	62.9	4.3	8.1	3.8	12.9	4.8	2.7	0.4	63.0	4.3	32.7	0.072	0.510	19.931204	-98.897764
X. C. México - Pachuca	127.30	3	1	6115	0.1	65.8	3.4	8.2	2.5	14.0	3.9	1.7	0.4	65.9	3.4	30.7	0.066	0.549	19.927213	-98.880963
X. C. México - Pachuca	127.30	3	2	5973	0.2	64.3	4.1	6.9	4.3	12.0	5.3	2.3	0.6	64.5	4.1	31.4	0.073	0.549	19.927213	-98.880963
Lim. Edos. Term. Hgo. Ppia. Mex.	143.98																			
X. C. Venta De Carpio - T. C. (Pachuca - Tuxpan)	151.11	1	1	6699	0.1	64.2	3.3	8.4	2.8	12.4	4.4	3.8	0.6	64.3	3.3	32.4	0.074	0.511	19.837933	-98.705450
X. C. Venta De Carpio - T. C. (Pachuca - Tuxpan)	151.11	1	2	6420	0.1	72.2	3.0	6.6	2.6	10.2	3.1	1.6	0.6	72.3	3.0	24.7	0.096	0.511	19.837933	-98.705450
X. C. Venta De Carpio - T. C. (Pachuca - Tuxpan)	151.11	3	1	6752	0.1	69.4	3.0	8.3	2.2	12.1	3.3	1.4	0.2	69.5	3.0	27.5	0.072	0.561	19.828983	-98.694367
X. C. Venta De Carpio - T. C. (Pachuca - Tuxpan)	151.11	3	2	6550	0.1	72.8	3.7	6.6	1.9	10.3	3.2	1.1	0.3	72.9	3.7	23.4	0.096	0.561	19.828983	-98.694367
X. C. Ent. Tolman - Cd. Sahagún	162.55	1	1	6431	0.1	67.6	2.1	4.9	2.0	16.2	5.1	1.7	0.3	67.7	2.1	30.2	0.072	0.508	19.760850	-98.631933
X. C. Ent. Tolman - Cd. Sahagún	162.55	1	2	6228	0.2	65.9	2.4	5.3	2.3	16.6	5.1	1.9	0.3	66.1	2.4	31.5	0.079	0.508	19.760850	-98.631933
X. C. Ent. Tolman - Cd. Sahagún	162.55	3	1	6432	0.1	64.2	2.5	5.5	2.2	16.7	5.7	2.5	0.6	64.3	2.5	33.2	0.074	0.560	19.752100	-98.627033
X. C. Ent. Tolman - Cd. Sahagún	162.55	3	2	6288	0.1	65.1	3.1	5.1	2.4	16.8	5.4	1.7	0.3	65.2	3.1	31.7	0.078	0.560	19.752100	-98.627033
Lim. Edos. Term. Mex. Ppia. Hgo.	166.53																			

HIDALGO

14 CARR: Libramiento Norte de la Ciudad de México (Cuota)

CLAVE: 0902

RUTA: MEX-M40D

AÑO: 2015

LUGAR	ESTACION				CLASIFICACION VEHICULAR EN PORCIENTO														COORDENADAS	
	KM	TE	SC	TDPA	M	A	B	C2	C3	T3S2	T3S3	T3S2R4	OTROS	A	B	C	K'	D	LATITUD	LONGITUD
X. C. Calpulalpan - El Ocote	180.39	1	1	7209	0.1	67.8	3.8	7.2	3.5	11.2	3.7	2.2	0.5	67.9	3.8	28.3	0.077	0.508	19.625850	-98.553383
X. C. Calpulalpan - El Ocote	180.39	1	2	7451	0.1	66.3	3.6	8.2	3.6	12.4	3.6	1.7	0.5	66.4	3.6	30.0	0.093	0.508	19.625850	-98.553383
X. C. Calpulalpan - El Ocote	180.39	3	1	7440	0.1	68.5	3.9	6.1	3.5	12.7	3.6	1.4	0.2	68.6	3.9	27.5	0.078	0.503	19.615800	-98.544800
X. C. Calpulalpan - El Ocote	180.39	3	2	7352	0.0	69.2	3.8	8.6	2.5	10.9	3.3	1.3	0.4	69.2	3.8	27.0	0.076	0.503	19.615800	-98.544800
Lim. Edos. Term. Hgo. Ppia. Tlax.	180.98																			
X. C. Los Reyes - Zacatepec	194.90	1	1	7383	1.1	63.5	3.7	6.6	2.9	11.4	3.4	6.0	1.4	64.6	3.7	31.7	0.073	0.504	19.520252	-98.472967
X. C. Los Reyes - Zacatepec	194.90	1	2	7276	0.7	60.3	4.1	7.6	3.0	12.2	3.5	7.0	1.6	61.0	4.1	34.9	0.074	0.504	19.520271	-98.472968
X. C. Los Reyes - Zacatepec	194.90	3	1	6354	1.0	60.3	4.6	6.6	3.2	13.7	3.3	5.9	1.4	61.3	4.6	34.1	0.076	0.516	19.507845	-98.466961
X. C. Los Reyes - Zacatepec	194.90	3	2	5956	0.7	56.6	5.0	7.7	3.4	15.0	3.6	6.5	1.5	57.3	5.0	37.7	0.072	0.516	19.507828	-98.466963
X. C. San Martín Texmelucan - Tlaxcala - El Molinito	220.95	1	1	6390	0.8	54.5	5.3	7.8	3.7	16.8	3.1	6.5	1.5	55.3	5.3	39.4	0.078	0.501	19.299732	-98.409714
X. C. San Martín Texmelucan - Tlaxcala - El Molinito	220.95	1	2	6361	1.6	49.3	6.1	8.7	4.0	17.9	3.4	7.4	1.6	50.9	6.1	43.0	0.076	0.501	19.299723	-98.409723
X. C. San Martín Texmelucan - Tlaxcala - El Molinito	220.95	3	1	8064	0.6	60.0	6.6	8.5	2.7	12.0	2.9	5.3	1.4	60.6	6.6	32.8	0.078	0.514	19.293146	-98.410381
X. C. San Martín Texmelucan - Tlaxcala - El Molinito	220.95	3	2	7621	1.1	56.2	7.0	8.7	3.0	13.6	3.1	5.8	1.5	57.3	7.0	35.7	0.101	0.514	19.293148	-98.410381
Caseta de Cobro San Martín Texmelucan	222.00	1	1	6927	0.2	55.4	2.7	5.7	6.0	17.9	3.4	7.2	1.5	55.6	2.7	41.7	0.067	0.500	19.301905	-98.409628
Caseta de Cobro San Martín Texmelucan	222.00	1	2	6927	0.2	55.4	2.7	5.7	6.0	17.9	3.4	7.2	1.5	55.6	2.7	41.7	0.067	0.500	19.301905	-98.409628
T. C. San Martín Texmelucan - Ocotoxco (Cuota)	222.44																			

15 CARR: México - Pachuca (Cuota)

CLAVE: 00432

RUTA: MEX-085D

AÑO: 2015

LUGAR	ESTACION				CLASIFICACION VEHICULAR EN PORCIENTO														COORDENADAS	
	KM	TE	SC	TDPA	M	A	B	C2	C3	T3S2	T3S3	T3S2R4	OTROS	A	B	C	K'	D	LATITUD	LONGITUD
T. C. México - Pachuca (Libre)	0.00																			
Lim. Edos. Term. D. F. Ppia. Mex.	9.86																			
Caseta de Cobro Ojo de Agua	25.00	2	1	27128	0.8	84.8	6.3	2.9	3.0	1.4	0.2	0.5	0.1	85.6	6.3	8.1	0.081	0.500	19.618818	-99.029462
Caseta de Cobro Ojo de Agua	25.00	2	2	27128	0.8	84.8	6.3	2.9	3.0	1.4	0.2	0.5	0.1	85.6	6.3	8.1	0.081	0.500	19.618818	-99.029462
Caseta de Cobro Ojo de Agua	25.00	3	1	24175	0.0	82.9	4.3	6.7	2.4	1.9	0.7	0.8	0.3	82.9	4.3	12.8	0.076	0.517	19.625760	-99.025720
Caseta de Cobro Ojo de Agua	25.00	3	2	25839	0.0	85.8	4.0	6.1	1.1	1.7	0.6	0.5	0.2	85.8	4.0	10.2	0.075	0.517	19.625760	-99.025720
T. Izq. Tecámac	35.62	3	1	21692	0.7	83.3	3.1	7.3	1.6	2.3	0.8	0.6	0.3	84.0	3.1	12.9	0.102	0.523	19.708180	-98.966520
T. Izq. Tecámac	35.62	3	2	25217	1.2	80.7	3.5	8.6	1.7	2.5	0.9	0.6	0.3	81.9	3.5	14.6	0.101	0.523	19.708180	-98.966520
Lim. Edos. Term. Mex. Ppia. Hgo.	49.60																			
X. C. Otumba - Tizayuca	53.45	1	1	17963	0.7	85.3	2.9	6.0	1.5	1.9	0.8	0.5	0.4	86.0	2.9	11.1	0.117	0.514	19.831883	-98.950750
X. C. Otumba - Tizayuca	53.45	1	2	18844	1.1	83.4	3.3	6.7	1.6	2.0	1.0	0.5	0.4	84.5	3.3	12.2	0.097	0.514	19.831883	-98.950750
T. C. México - Pachuca (Libre)	60.50	1	1	19134	0.0	83.9	3.7	6.9	2.6	1.4	0.6	0.6	0.3	83.9	3.7	12.4	0.102	0.523	19.882333	-98.937800
T. C. México - Pachuca (Libre)	60.50	1	2	21016	0.0	87.1	2.4	5.0	2.6	1.5	0.5	0.7	0.2	87.1	2.4	10.5	0.094	0.523	19.882333	-98.937800

HIDALGO

16 CARR: Tejocotal - Nuevo Necaxa (Cuota)

CLAVE: 00211

RUTA: MEX-132D

AÑO: 2015

LUGAR	ESTACION				CLASIFICACION VEHICULAR EN PORCIENTO														COORDENADAS	
	KM	TE	SC	TDPA	M	A	B	C2	C3	T3S2	T3S3	T3S2R4	OTROS	A	B	C	K'	D	LATITUD	LONGITUD
T. C. Tlaxco - Tejocotal (Cuota)	0.00	3	0	8130	0.2	83.0	3.8	5.2	1.8	2.8	2.0	0.9	0.3	83.2	3.8	13.0	0.099	0.509	20.135883	-98.113267
Lim. Edos. Term. Hgo. Ppia. Pue.	2.10																			
Nuevo Necaxa	17.00	1	1	3870	0.3	74.1	5.2	7.6	2.9	4.9	2.2	2.2	0.6	74.4	5.2	20.4	0.097	0.515	20.177553	-98.026878
Nuevo Necaxa	17.00	1	2	3649	0.7	72.1	5.5	8.1	3.2	5.1	2.3	2.4	0.6	72.8	5.5	21.7	0.094	0.515	20.177580	-98.026854
Caseta de Cobro Nuevo Necaxa	17.00	2	0	1306	0.3	76.3	1.3	6.3	5.5	3.9	2.7	3.1	0.6	76.6	1.3	22.1	0.092	0.500	20.186719	-98.029735
T. C. Pachuca - Tuxpam	18.70																			

17 CARR: México - Querétaro (Cuota)

CLAVE: 00411

RUTA: MEX-057-MEX-057D

AÑO: 2015

LUGAR	ESTACION				CLASIFICACION VEHICULAR EN PORCIENTO														COORDENADAS	
	KM	TE	SC	TDPA	M	A	B	C2	C3	T3S2	T3S3	T3S2R4	OTROS	A	B	C	K'	D	LATITUD	LONGITUD
México	0.00																			
Lim. Edos. Term. D. F. Ppia. Mex.	11.30																			
Caseta de Cobro Tepotzotlán	43.01	2	1	26721	0.3	69.2	6.4	5.1	4.6	10.7	0.9	2.4	0.4	69.5	6.4	24.1	0.077	0.500	19.715358	-99.207587
Caseta de Cobro Tepotzotlán	43.01	2	2	26721	0.3	69.2	6.4	5.1	4.6	10.7	0.9	2.4	0.4	69.5	6.4	24.1	0.077	0.500	19.715358	-99.207587
Ent. Jorobas	56.18	1	1	28764	2.0	70.3	4.0	7.8	2.9	7.8	1.8	2.4	1.0	72.3	4.0	23.7	0.071	0.504	19.823000	-99.246250
Ent. Jorobas	56.18	1	2	29411	1.2	68.1	4.6	8.6	3.3	8.4	2.1	2.7	1.0	69.3	4.6	26.1	0.080	0.504	19.822900	-99.246190
Ent. Jorobas	56.18	3	1	28862	0.0	79.0	3.5	7.0	3.0	2.9	2.0	1.9	0.7	79.0	3.5	17.5	0.064	0.568	19.828810	-99.257000
Ent. Jorobas	56.18	3	2	28493	0.0	76.3	4.0	5.4	2.5	6.5	2.9	2.0	0.4	76.3	4.0	19.7	0.078	0.568	19.828810	-99.257000
Lim. Edos. Term. Mex. Ppia. Hgo.	59.85																			
T. Der. Tepeji del Río	69.36	1	1	27484	0.0	73.3	3.7	6.6	3.3	8.4	2.6	1.5	0.6	73.3	3.7	23.0	0.066	0.509	19.875840	-99.337600
T. Der. Tepeji del Río	69.36	1	2	26500	0.0	73.2	4.1	5.7	2.6	9.1	3.2	1.5	0.6	73.2	4.1	22.7	0.080	0.509	19.875840	-99.337600
T. Der. Tepeji del Río	69.36	3	1	24561	1.1	66.1	6.7	6.8	3.5	10.2	2.6	2.3	0.7	67.2	6.7	26.1	0.066	0.506	19.914617	-99.362453
T. Der. Tepeji del Río	69.36	3	2	25253	1.0	62.1	7.4	7.4	4.1	12.0	2.7	2.6	0.7	63.1	7.4	29.5	0.070	0.506	19.914617	-99.362453
T. Izq. Jilotepec	83.75	1	1	25472	0.0	69.6	6.7	5.2	3.9	8.7	2.3	3.1	0.5	69.6	6.7	23.7	0.063	0.523	19.975800	-99.436070
T. Izq. Jilotepec	83.75	1	2	27949	0.0	72.0	6.9	5.3	3.2	7.9	2.2	1.7	0.8	72.0	6.9	21.1	0.084	0.523	19.975800	-99.436070
T. Izq. Jilotepec	83.75	3	1	23018	0.0	70.8	5.3	4.1	3.5	10.9	2.7	2.4	0.3	70.8	5.3	23.9	0.063	0.514	19.985670	-99.443640
T. Izq. Jilotepec	83.75	3	2	24312	0.0	71.3	6.0	5.1	3.0	9.5	2.2	2.2	0.7	71.3	6.0	22.7	0.095	0.514	19.985670	-99.443640
Lim. Edos. Term. Hgo. Ppia. Mex.	86.00																			
X. C. Jilotepec - Maravillas	107.00	1	1	24281	0.0	69.7	5.4	4.5	3.4	10.7	2.7	3.0	0.6	69.7	5.4	24.9	0.059	0.524	20.082660	-99.625120
X. C. Jilotepec - Maravillas	107.00	1	2	26719	0.0	70.2	6.4	5.0	2.4	9.6	3.7	2.3	0.4	70.2	6.4	23.4	0.082	0.524	20.082660	-99.625120
X. C. Jilotepec - Maravillas	107.00	3	1	24871	0.0	67.0	5.0	5.3	4.5	11.6	3.1	2.8	0.7	67.0	5.0	28.0	0.059	0.507	20.080840	-99.646160
X. C. Jilotepec - Maravillas	107.00	3	2	25580	0.0	73.5	4.5	4.9	2.4	10.0	2.5	1.6	0.6	73.5	4.5	22.0	0.078	0.507	20.080840	-99.646160
T. Izq. Aculco	125.00	1	1	24670	0.0	68.3	4.3	5.3	4.1	10.6	3.9	2.8	0.7	68.3	4.3	27.4	0.060	0.515	20.097470	-99.692940
T. Izq. Aculco	125.00	1	2	26165	0.0	72.9	4.4	4.4	2.9	9.4	2.5	2.7	0.8	72.9	4.4	22.7	0.084	0.515	20.097470	-99.692940

HIDALGO

17 CARR: México - Querétaro (Cuota)

CLAVE: 00411

RUTA: MEX-057-MEX-057D

AÑO: 2015

LUGAR	ESTACION				CLASIFICACION VEHICULAR EN PORCIENTO														COORDENADAS	
	KM	TE	SC	TDPA	M	A	B	C2	C3	T3S2	T3S3	T3S2R4	OTROS	A	B	C	K'	D	LATITUD	LONGITUD
T. Izq. Aculco	125.00	3	1	23131	0.0	66.8	5.5	4.8	3.7	11.1	4.1	3.4	0.6	66.8	5.5	27.7	0.062	0.517	20.116980	-99.717850
T. Izq. Aculco	125.00	3	2	25364	0.0	69.3	5.1	4.5	2.5	10.9	3.5	3.5	0.7	69.3	5.1	25.6	0.077	0.517	20.116980	-99.717850
Lim. Edos. Term. Mex. Ppia. Qro.	145.50																			
Caseta de Cobro Palmillas	145.80	2	1	24040	0.2	57.2	4.7	5.5	6.6	18.6	1.8	4.7	0.7	57.4	4.7	37.9	0.077	0.500	20.296103	-99.928994
Caseta de Cobro Palmillas	145.80	2	2	24040	0.2	57.2	4.7	5.5	6.6	18.6	1.8	4.7	0.7	57.4	4.7	37.9	0.077	0.500	20.296103	-99.928994
T. Izq. Toluca	148.50	1	1	22472	0.0	68.3	5.2	6.0	3.3	9.7	4.0	3.1	0.4	68.3	5.2	26.5	0.057	0.508	20.292080	-99.921750
T. Izq. Toluca	148.50	1	2	21756	0.0	69.4	4.9	4.5	3.5	10.5	3.6	3.1	0.5	69.4	4.9	25.7	0.075	0.508	20.292080	-99.921750
T. Izq. Toluca	148.50	3	1	30583	0.0	69.0	4.9	5.7	3.0	9.5	3.5	3.3	1.1	69.0	4.9	26.1	0.052	0.536	20.302808	-99.934810
T. Izq. Toluca	148.50	3	2	28994	0.0	68.6	4.7	5.3	3.3	10.4	4.2	2.7	0.8	68.6	4.7	26.7	0.054	0.536	20.303050	-99.935184
T. Der. Poniente San Juan del Río	164.10	3	1	20432	0.0	75.0	5.0	6.0	3.3	6.1	2.4	1.8	0.4	75.0	5.0	20.0	0.075	0.548	20.372690	-99.991580
T. Der. Poniente San Juan del Río	164.10	3	2	24727	0.0	75.5	4.1	4.8	4.0	6.3	2.9	2.0	0.4	75.5	4.1	20.4	0.075	0.548	20.372690	-99.991580
T. Izq. Acámbaro	170.45	3	1	39840	0.0	69.4	5.5	8.2	3.3	7.4	2.6	3.2	0.4	69.4	5.5	25.1	0.061	0.508	20.446930	-100.078360
T. Izq. Acámbaro	170.45	3	2	38527	0.0	75.4	4.8	7.9	1.9	6.5	1.9	1.3	0.3	75.4	4.8	19.8	0.061	0.508	20.446930	-100.078360
T. Der. Libramiento de Querétaro a San Luis Potosí	207.00	1	1	50048	0.3	82.1	2.7	5.1	3.6	4.4	0.8	0.8	0.2	82.4	2.7	14.9	0.097	0.522	20.584826	-100.343115
T. Der. Libramiento de Querétaro a San Luis Potosí	207.00	1	2	46661	0.5	79.9	3.1	5.7	3.9	4.9	1.0	0.8	0.2	80.4	3.1	16.5	0.095	0.522	20.584826	-100.343115
T. Der. Libramiento de Querétaro a San Luis Potosí	207.00	3	1	49663	0.7	86.4	1.7	2.6	2.9	4.1	0.8	0.7	0.1	87.1	1.7	11.2	0.074	0.510	20.578879	-100.378216
T. Der. Libramiento de Querétaro a San Luis Potosí	207.00	3	2	47075	0.7	85.2	1.9	2.9	3.3	4.4	0.8	0.7	0.1	85.9	1.9	12.2	0.077	0.510	20.578879	-100.378216
Querétaro	211.60																			

18 CARR: Actopan - Progreso

CLAVE: 13038

RUTA: HGO

AÑO: 2015

LUGAR	ESTACION				CLASIFICACION VEHICULAR EN PORCIENTO														COORDENADAS	
	KM	TE	SC	TDPA	M	A	B	C2	C3	T3S2	T3S3	T3S2R4	OTROS	A	B	C	K'	D	LATITUD	LONGITUD
Actopan	0.00	3	1	7511	0.1	91.1	0.6	4.4	2.1	0.8	0.6	0.2	0.1	91.2	0.6	8.2	0.090	0.502	20.266161	-98.955831
Actopan	0.00	3	2	7586	0.1	92.3	0.6	5.2	1.0	0.4	0.2	0.1	0.1	92.4	0.6	7.0	0.079	0.502	20.266161	-98.955831
Progreso	23.90	1	1	5924	0.2	93.6	1.1	3.3	0.8	0.4	0.2	0.3	0.1	93.8	1.1	5.1	0.092	0.501	20.245107	-99.175570
Progreso	23.90	1	2	5892	0.2	91.6	0.8	5.3	1.1	0.4	0.2	0.3	0.1	91.8	0.8	7.4	0.087	0.501	20.245107	-99.175570

19 CARR: El Saucillo - Amealco

CLAVE: 13103

RUTA: HGO-103

AÑO: 2015

LUGAR	ESTACION				CLASIFICACION VEHICULAR EN PORCIENTO														COORDENADAS	
	KM	TE	SC	TDPA	M	A	B	C2	C3	T3S2	T3S3	T3S2R4	OTROS	A	B	C	K'	D	LATITUD	LONGITUD
T. C. Portezuelo - Palmillas	0.00	3	0	3877	0.3	82.8	3.8	5.4	2.1	3.8	1.4	0.2	0.2	83.1	3.8	13.1	0.094	0.503	20.313125	-99.715385
Nopala	11.00	1	1	2034	0.3	90.6	1.7	3.5	1.0	1.4	1.0	0.3	0.2	90.9	1.7	7.4	0.097	0.504	20.254228	-99.653114
Nopala	11.00	1	2	2068	0.5	88.8	2.0	4.1	1.1	2.1	1.1	0.2	0.1	89.3	2.0	8.7	0.088	0.504	20.254228	-99.653114

HIDALGO

19 CARR: El Saucillo - Amealco

CLAVE: 13103

RUTA: HGO-103

AÑO: 2015

LUGAR	ESTACION				CLASIFICACION VEHICULAR EN PORCIENTO													COORDENADAS		
	KM	TE	SC	TDPA	M	A	B	C2	C3	T3S2	T3S3	T3S2R4	OTROS	A	B	C	K'	D	LATITUD	LONGITUD
Nopala	11.00	3	0	3935	0.2	89.5	1.9	3.6	1.4	1.8	1.2	0.1	0.3	89.7	1.9	8.4	0.087	0.501	20.245598	-99.636230
Amealco	21.40	1	0	1884	0.3	88.6	2.1	4.3	1.2	1.8	1.2	0.2	0.3	88.9	2.1	9.0	0.076	0.510	20.239262	-99.556989

20 CARR: Ent. Emiliano Zapata - Cd. Sahagún

CLAVE: 13255

RUTA: HGO

AÑO: 2015

LUGAR	ESTACION				CLASIFICACION VEHICULAR EN PORCIENTO													COORDENADAS		
	KM	TE	SC	TDPA	M	A	B	C2	C3	T3S2	T3S3	T3S2R4	OTROS	A	B	C	K'	D	LATITUD	LONGITUD
T. C. Calpulalpan - El Ocote	0.00																			
Emiliano Zapata	2.70	1	1	4438	0.3	88.4	1.1	3.4	1.3	3.3	1.4	0.6	0.2	88.7	1.1	10.2	0.068	0.500	19.643633	-98.539050
Emiliano Zapata	2.70	1	2	4442	0.1	84.1	2.2	4.7	1.7	4.8	1.6	0.6	0.2	84.2	2.2	13.6	0.074	0.500	19.643633	-98.539050
T. Izq. Otumba	14.00	1	1	5082	0.1	84.8	1.1	5.7	1.2	5.1	1.3	0.5	0.2	84.9	1.1	14.0	0.072	0.503	19.742600	-98.582183
T. Izq. Otumba	14.00	1	2	5146	0.3	84.3	1.5	5.5	2.2	4.3	1.1	0.6	0.2	84.6	1.5	13.9	0.071	0.503	19.742600	-98.582183
Cd. Sahagún	17.98	1	1	6779	0.1	87.9	1.4	4.3	2.2	2.1	1.0	0.7	0.3	88.0	1.4	10.6	0.085	0.503	19.754017	-98.588233
Cd. Sahagún	17.98	1	2	6874	0.2	86.1	2.7	4.4	2.6	1.7	1.0	1.0	0.3	86.3	2.7	11.0	0.094	0.503	19.754017	-98.588233

21 CARR: Ent. Tepeji del Río - Tlahuelilpan

CLAVE: 13017

RUTA: HGO-017

AÑO: 2015

LUGAR	ESTACION				CLASIFICACION VEHICULAR EN PORCIENTO													COORDENADAS		
	KM	TE	SC	TDPA	M	A	B	C2	C3	T3S2	T3S3	T3S2R4	OTROS	A	B	C	K'	D	LATITUD	LONGITUD
T. C. México - Querétaro (Cuota)	0.00																			
T. Izq. Tepeji del Río	3.00	3	1	6419	0.2	85.8	1.9	6.5	2.1	2.0	0.9	0.4	0.2	86.0	1.9	12.1	0.076	0.511	19.921860	-99.339030
T. Izq. Tepeji del Río	3.00	3	2	6141	0.1	89.5	1.2	5.7	0.9	1.6	0.5	0.3	0.2	89.6	1.2	9.2	0.077	0.511	19.922040	-99.339160
Tula de Allende	18.00	1	0	12986	0.1	92.0	1.3	3.0	1.1	1.6	0.6	0.2	0.1	92.1	1.3	6.6	0.073	0.508	20.022240	-99.342230
X. C. Arco Norte de La Ciudad de México	19.40	1	1	8850	0.1	88.8	1.1	4.8	1.2	2.1	1.3	0.5	0.1	88.9	1.1	10.0	0.082	0.501	20.096760	-99.287390
X. C. Arco Norte de La Ciudad de México	19.40	1	2	8803	0.1	86.5	2.6	5.0	1.7	2.2	0.8	0.7	0.4	86.6	2.6	10.8	0.111	0.501	20.096760	-99.287390
Tlahuelilpan de Ocampo	32.00	1	1	7180	0.0	83.6	0.8	11.8	1.8	1.0	0.6	0.2	0.2	83.6	0.8	15.6	0.086	0.502	20.125489	-99.247277
Tlahuelilpan de Ocampo	32.00	1	2	7229	0.1	85.2	1.6	10.0	1.7	0.8	0.2	0.3	0.1	85.3	1.6	13.1	0.097	0.502	20.125489	-99.247277

22 CARR: Ent. Tolman - Cd. Sahagún

CLAVE: 00119

RUTA: EM-009-HGO

AÑO: 2015

LUGAR	ESTACION				CLASIFICACION VEHICULAR EN PORCIENTO													COORDENADAS		
	KM	TE	SC	TDPA	M	A	B	C2	C3	T3S2	T3S3	T3S2R4	OTROS	A	B	C	K'	D	LATITUD	LONGITUD
T. C. Venta de Carpio - Tulancingo	0.00	3	0	14490	0.1	86.6	1.9	5.3	1.8	2.3	1.2	0.5	0.3	86.7	1.9	11.4	0.078	0.506	19.714417	-98.790950
Otumba	5.00	3	0	5974	0.3	87.7	1.9	5.3	1.3	1.7	1.1	0.5	0.2	88.0	1.9	10.1	0.074	0.518	19.710533	-98.743067
T. Der. Jaltepec	21.00	3	0	4967	0.4	86.0	1.7	6.6	1.1	2.6	1.0	0.4	0.2	86.4	1.7	11.9	0.084	0.512	19.752300	-98.613567

HIDALGO

22 CARR: Ent. Tolman - Cd. Sahagún

CLAVE: 00119

RUTA: EM-009-HGO

AÑO: 2015

LUGAR	ESTACION				CLASIFICACION VEHICULAR EN PORCIENTO													COORDENADAS			
	KM	TE	SC	TDPA	M	A	B	C2	C3	T3S2	T3S3	T3S2R4	OTROS	A	B	C	K'	D	LATITUD	LONGITUD	
Lim. Edos. Term. Mex. Ppia. Hgo.	25.00																				
Cd. Sahagún	32.00	1	0	6519	0.3	81.5	3.5	5.1	3.1	3.6	1.6	1.0	0.3	81.8	3.5	14.7	0.101	0.526	19.754383	-98.592967	

23 CARR: Francisco I. Madero - Tula de Allende

CLAVE: 13043

RUTA: HGO

AÑO: 2015

LUGAR	ESTACION				CLASIFICACION VEHICULAR EN PORCIENTO													COORDENADAS		
	KM	TE	SC	TDPA	M	A	B	C2	C3	T3S2	T3S3	T3S2R4	OTROS	A	B	C	K'	D	LATITUD	LONGITUD
T. C. Portezuelo - Palmillas	0.00	3	0	4377	0.2	90.8	2.7	5.0	0.8	0.4	0.1	0.0	0.0	91.0	2.7	6.3	0.093	0.501	20.444600	-99.361930
Gral. Pedro María Anaya	38.20	1	0	4739	0.3	91.0	2.1	2.9	1.0	1.7	0.5	0.4	0.1	91.3	2.1	6.6	0.071	0.528	20.162810	-99.364490
T. C. (México - Querétaro) - Tlahuelilpan de Ocampo	52.70	1	0	7922	0.1	91.7	1.9	2.6	1.2	1.4	0.7	0.3	0.1	91.8	1.9	6.3	0.124	0.508	20.068020	-99.331030

24 CARR: Huichapan - Tecozautla

CLAVE: 13030

RUTA: HGO-030

AÑO: 2015

LUGAR	ESTACION				CLASIFICACION VEHICULAR EN PORCIENTO													COORDENADAS			
	KM	TE	SC	TDPA	M	A	B	C2	C3	T3S2	T3S3	T3S2R4	OTROS	A	B	C	K'	D	LATITUD	LONGITUD	
Huichapan	0.00	3	0	5790	0.2	86.6	2.7	5.5	1.6	2.4	1.0	0.0	0.0	86.8	2.7	10.5	0.080	0.508	20.382921	-99.659427	
Tecozautla	30.85																				

25 CARR: Jilotepec - Maravillas

CLAVE: 00015

RUTA: EM-HGO

AÑO: 2015

LUGAR	ESTACION				CLASIFICACION VEHICULAR EN PORCIENTO													COORDENADAS			
	KM	TE	SC	TDPA	M	A	B	C2	C3	T3S2	T3S3	T3S2R4	OTROS	A	B	C	K'	D	LATITUD	LONGITUD	
Jilotepec	0.00	3	0	6957	0.2	91.1	1.5	3.4	1.1	1.6	0.6	0.3	0.2	91.3	1.5	7.2	0.076	0.503	19.954210	-99.549510	
X. C. México - Querétaro (Cuota)	21.30	1	0	2086	0.2	90.4	1.7	4.6	1.3	1.1	0.6	0.1	0.0	90.6	1.7	7.7	0.093	0.510	20.080840	-99.631260	
X. C. México - Querétaro (Cuota)	21.30	3	0	4205	0.3	85.9	2.1	6.5	2.2	1.5	0.8	0.5	0.2	86.2	2.1	11.7	0.100	0.519	20.093850	-99.626650	
Acazuchitlán	29.00	1	0	2862	0.4	83.3	1.3	10.3	2.1	1.5	0.6	0.4	0.1	83.7	1.3	15.0	0.086	0.537	20.141390	-99.601260	
Lim. Edos. Term. Mex. Ppia. Hgo.	29.30																				
Maravillas	36.40	1	0	1724	0.6	83.6	3.1	8.0	3.2	1.3	0.2	0.0	0.0	84.2	3.1	12.7	0.101	0.520	20.197233	-99.584266	
T. C. El Saucillo - Amealco	40.00	1	0	2678	0.3	89.7	2.1	5.3	1.5	0.9	0.2	0.0	0.0	90.0	2.1	7.9	0.098	0.520	20.234580	-99.595380	

26 CARR: Libramiento de Atotonilco El Grande

CLAVE: 13238

RUTA: HGO

AÑO: 2015

LUGAR	ESTACION				CLASIFICACION VEHICULAR EN PORCIENTO													COORDENADAS		
	KM	TE	SC	TDPA	M	A	B	C2	C3	T3S2	T3S3	T3S2R4	OTROS	A	B	C	K'	D	LATITUD	LONGITUD
T. C. Pachuca - Tempoal (1er. Acceso)	0.00	3	0	7171	0.1	85.7	1.9	6.5	2.1	2.2	0.9	0.4	0.2	85.8	1.9	12.3	0.100	0.506	20.273050	-98.646833

HIDALGO

26 CARR: Libramiento de Atotonilco El Grande

CLAVE: 13238

RUTA: HGO

AÑO: 2015

LUGAR	ESTACION				CLASIFICACION VEHICULAR EN PORCIENTO														COORDENADAS	
	KM	TE	SC	TDPA	M	A	B	C2	C3	T3S2	T3S3	T3S2R4	OTROS	A	B	C	K'	D	LATITUD	LONGITUD
T. C. Pachuca - Tempoal (2do. Acceso)	6.30	1	0	7599	0.1	90.2	1.3	4.4	1.4	1.5	0.7	0.3	0.1	90.3	1.3	8.4	0.078	0.507	20.297650	-98.677017

27 CARR: Lolotla - Atlapexco

CLAVE: 13238

RUTA: HGO

AÑO: 2015

LUGAR	ESTACION				CLASIFICACION VEHICULAR EN PORCIENTO														COORDENADAS	
	KM	TE	SC	TDPA	M	A	B	C2	C3	T3S2	T3S3	T3S2R4	OTROS	A	B	C	K'	D	LATITUD	LONGITUD
T. C. Pachuca - Tempoal	0.00	3	0	1228	0.5	93.9	0.5	2.8	1.3	0.6	0.2	0.1	0.1	94.4	0.5	5.1	0.097	0.504	20.876217	-98.702883
Atlapexco	68.00	1	0	2589	0.3	92.7	0.6	3.9	1.5	0.7	0.3	0.0	0.0	93.0	0.6	6.4	0.097	0.508	21.015217	-98.352283
T. C. Álamo - Huejutla	69.80																			

28 CARR: Los Reyes - El Tephé

CLAVE: 00021

RUTA: EM-HGO

AÑO: 2015

LUGAR	ESTACION				CLASIFICACION VEHICULAR EN PORCIENTO														COORDENADAS	
	KM	TE	SC	TDPA	M	A	B	C2	C3	T3S2	T3S3	T3S2R4	OTROS	A	B	C	K'	D	LATITUD	LONGITUD
T. C. México - Pachuca (Libre)	0.00																			
Los Reyes	1.35	3	1	8654	0.1	89.2	1.7	5.5	1.4	0.9	0.4	0.5	0.3	89.3	1.7	9.0	0.062	0.504	19.767218	-98.988133
Los Reyes	1.35	3	2	8810	0.1	89.7	1.6	5.2	1.2	1.0	0.5	0.4	0.3	89.8	1.6	8.6	0.058	0.504	19.767218	-98.988133
Zumpango	15.35	1	1	12113	0.1	92.6	1.0	3.3	1.2	0.8	0.4	0.4	0.2	92.7	1.0	6.3	0.066	0.502	19.792217	-99.073083
Zumpango	15.35	1	2	12027	0.1	94.2	0.8	2.4	1.1	0.7	0.3	0.3	0.1	94.3	0.8	4.9	0.070	0.502	19.792217	-99.073083
Zumpango	15.35	3	0	18964	0.1	89.3	2.3	3.5	1.4	2.0	0.8	0.4	0.2	89.4	2.3	8.3	0.058	0.502	19.829800	-99.118147
Tequixquiac	29.00	1	0	10720	0.2	85.7	3.1	4.7	2.1	2.2	1.1	0.7	0.2	85.9	3.1	11.0	0.064	0.509	19.883983	-99.137733
Apaxco	39.00	3	1	4621	0.3	85.9	3.0	5.1	1.8	1.8	1.1	0.8	0.2	86.2	3.0	10.8	0.071	0.510	19.984683	-99.180117
Apaxco	39.00	3	2	4446	0.4	87.0	2.3	4.7	1.3	2.0	1.2	0.9	0.2	87.4	2.3	10.3	0.069	0.510	19.984683	-99.180117
Lim. Edos. Term. Mex. Ppia. Hgo.	40.00																			
T. Izq. Atotonilco (1º Acceso)	42.00	1	0	7172	0.3	82.6	2.7	6.4	2.6	3.0	1.5	0.6	0.3	82.9	2.7	14.4	0.075	0.507	19.997483	-99.187533
X. C. Arco Norte de La Ciudad de México	50.00	3	1	6635	0.2	87.1	2.5	5.1	2.3	1.7	0.5	0.5	0.1	87.3	2.5	10.2	0.082	0.506	20.069779	-99.220710
X. C. Arco Norte de La Ciudad de México	50.00	3	2	6471	0.1	86.4	3.7	5.6	2.0	1.2	0.5	0.3	0.2	86.5	3.7	9.8	0.079	0.506	20.069779	-99.220710
Tlaxcoapan	52.00	3	0	9074	3.7	80.4	6.4	4.4	0.8	3.1	0.6	0.2	0.4	84.1	6.4	9.5	0.075	0.504	20.105935	-99.221861
Tlahuelilpan de Ocampo	60.00	3	1	9061	0.1	84.4	3.6	5.6	2.5	1.6	0.9	0.9	0.4	84.5	3.6	11.9	0.072	0.505	20.149937	-99.234118
Tlahuelilpan de Ocampo	60.00	3	2	8881	0.2	84.4	3.7	6.3	2.1	1.4	0.9	0.6	0.4	84.6	3.7	11.7	0.086	0.505	20.149937	-99.234118
Progreso	72.00	1	1	11046	0.0	89.2	1.9	4.9	2.3	0.7	0.2	0.6	0.2	89.2	1.9	8.9	0.063	0.500	20.239215	-99.193088
Progreso	72.00	1	2	11058	0.0	90.3	2.5	3.9	1.5	0.8	0.4	0.4	0.2	90.3	2.5	7.2	0.071	0.500	20.239215	-99.193088
El Tephé	97.00	1	0	7557	2.9	79.6	5.7	6.5	0.8	3.4	0.6	0.2	0.3	82.5	5.7	11.8	0.080	0.508	20.437319	-99.172820

HIDALGO

29 CARR: Otumba - Tizayuca

CLAVE: 00012

RUTA: EM-HGO

AÑO: 2015

LUGAR	ESTACION				CLASIFICACION VEHICULAR EN PORCIENTO														COORDENADAS	
	KM	TE	SC	TDPA	M	A	B	C2	C3	T3S2	T3S3	T3S2R4	OTROS	A	B	C	K'	D	LATITUD	LONGITUD
Otumba	0.00	3	0	3891	0.2	94.9	0.5	2.2	0.7	0.8	0.3	0.3	0.1	95.1	0.5	4.4	0.087	0.521	19.711333	-98.757850
X. C. Venta de Carpio - Tulancingo	6.00	3	0	4464	0.1	93.1	0.9	2.8	1.1	1.2	0.4	0.3	0.1	93.2	0.9	5.9	0.085	0.508	19.759267	-98.758933
Temascalapa	26.50	3	0	7055	0.2	87.5	1.6	6.2	1.4	1.8	0.7	0.4	0.2	87.7	1.6	10.7	0.065	0.509	19.830367	-98.917500
Lim. Edos. Term. Mex. Ppia. Hgo.	29.00																			
Tizayuca	37.10	1	1	8624	0.1	91.0	0.6	3.5	2.0	1.7	0.5	0.4	0.2	91.1	0.6	8.3	0.060	0.505	19.836483	-98.954650
Tizayuca	37.10	1	2	8815	0.2	89.2	1.1	4.0	2.1	2.0	0.6	0.6	0.2	89.4	1.1	9.5	0.070	0.505	19.836483	-98.954650

30 CARR: Ramal a El Chico

CLAVE: 13256

RUTA: HGO

AÑO: 2015

LUGAR	ESTACION				CLASIFICACION VEHICULAR EN PORCIENTO														COORDENADAS	
	KM	TE	SC	TDPA	M	A	B	C2	C3	T3S2	T3S3	T3S2R4	OTROS	A	B	C	K'	D	LATITUD	LONGITUD
T. C. Pachuca - Tempoal	0.00	3	0	2688	2.2	89.7	0.9	2.1	0.6	2.4	0.7	0.4	1.0	91.9	0.9	7.2	0.083	0.501	20.142933	-98.693550
Mineral El Chico	21.00	1	0	1151	0.7	94.4	0.5	3.1	1.0	0.0	0.1	0.1	0.1	95.1	0.5	4.4	0.132	0.504	20.209834	-98.727499

31 CARR: Ramal a Pachuca

CLAVE: 13254

RUTA: HGO

AÑO: 2015

LUGAR	ESTACION				CLASIFICACION VEHICULAR EN PORCIENTO														COORDENADAS	
	KM	TE	SC	TDPA	M	A	B	C2	C3	T3S2	T3S3	T3S2R4	OTROS	A	B	C	K'	D	LATITUD	LONGITUD
T. C. Colonia - Portezuelo	0.00	3	1	13719	0.1	92.0	1.8	3.8	1.5	0.6	0.2	0.0	0.0	92.1	1.8	6.1	0.091	0.518	20.121167	-98.820317
T. C. Colonia - Portezuelo	0.00	3	2	12775	0.1	92.9	1.4	3.6	1.3	0.5	0.2	0.0	0.0	93.0	1.4	5.6	0.080	0.518	20.121167	-98.820317
Pachuca	10.00																			

32 CARR: San Alejo - Huayacocotla

CLAVE: 00132

RUTA: HGO-051-VER-113

AÑO: 2015

LUGAR	ESTACION				CLASIFICACION VEHICULAR EN PORCIENTO														COORDENADAS	
	KM	TE	SC	TDPA	M	A	B	C2	C3	T3S2	T3S3	T3S2R4	OTROS	A	B	C	K'	D	LATITUD	LONGITUD
T. C. Pachuca - Tuxpam	0.00	3	0	5158	0.3	87.9	1.9	4.8	2.3	1.4	0.8	0.4	0.2	88.2	1.9	9.9	0.072	0.519	20.154241	-98.286398
Metepec	11.80	3	0	3654	0.2	88.0	2.0	6.0	1.3	1.6	0.4	0.3	0.2	88.2	2.0	9.8	0.074	0.517	20.243750	-98.331300
Agua Blanca	29.48	3	0	2705	0.3	89.8	1.7	4.3	1.7	1.2	0.4	0.4	0.2	90.1	1.7	8.2	0.087	0.512	20.354667	-98.369183
Lim. Edos. Term. Hgo. Ppia. Ver.	36.48																			
Huayacocotla	66.00	1	0	2838	1.7	81.7	0.5	7.5	1.9	3.3	2.1	0.6	0.7	83.4	0.5	16.1	0.077	0.535	20.528139	-98.493722

HIDALGO

33 CARR: San Felipe Orizatlán - Huejutla de Reyes

CLAVE: 13258

RUTA: HGO

AÑO: 2015

LUGAR	ESTACION				CLASIFICACION VEHICULAR EN PORCIENTO														COORDENADAS	
	KM	TE	SC	TDPA	M	A	B	C2	C3	T3S2	T3S3	T3S2R4	OTROS	A	B	C	K'	D	LATITUD	LONGITUD
San Felipe Orizatlán	0.00	3	0	3350	0.3	91.0	1.5	3.6	1.9	1.0	0.3	0.2	0.2	91.3	1.5	7.2	0.078	0.518	21.171967	-98.593717
Huejutla de Reyes	25.00	1	0	3126	0.2	96.5	0.3	1.7	0.6	0.4	0.1	0.2	0.0	96.7	0.3	3.0	0.081	0.502	21.127267	-98.458433

34 CARR: Santo Domingo - T. C. (México - Querétaro)

CLAVE: 00433

RUTA: EM-011-HGO

AÑO: 2015

LUGAR	ESTACION				CLASIFICACION VEHICULAR EN PORCIENTO														COORDENADAS	
	KM	TE	SC	TDPA	M	A	B	C2	C3	T3S2	T3S3	T3S2R4	OTROS	A	B	C	K'	D	LATITUD	LONGITUD
T. C. Toluca - Palmillas	0.00	3	0	8349	0.2	88.8	2.5	4.2	1.1	1.6	1.1	0.3	0.2	89.0	2.5	8.5	0.079	0.503	19.621780	-99.775390
X. C. Los Reyes - Ixtlahuaca	6.11	3	0	7894	0.2	86.6	2.6	6.4	1.0	1.7	1.0	0.4	0.1	86.8	2.6	10.6	0.081	0.508	19.659540	-99.722870
X. C. Villa del Carbón - Atlacomulco	23.94	3	0	5068	0.6	86.2	2.7	5.0	1.6	1.8	1.2	0.7	0.2	86.8	2.7	10.5	0.078	0.501	19.786200	-99.702030
T. Der. Chapa de Mota	42.70	1	0	9266	0.2	87.2	2.0	4.5	2.0	2.3	1.2	0.5	0.1	87.4	2.0	10.6	0.077	0.509	19.921855	-99.589673
Lim. Edos. Term. Mex. Ppia. Hgo.	63.34																			
T. C. México - Querétaro (Cuota)	65.84	1	1	4395	0.2	88.6	1.0	5.0	2.2	1.7	0.6	0.5	0.2	88.8	1.0	10.2	0.105	0.504	19.979600	-99.440480
T. C. México - Querétaro (Cuota)	65.84	1	2	4459	0.1	88.6	1.8	5.1	1.8	1.5	0.6	0.3	0.2	88.7	1.8	9.5	0.082	0.504	19.979600	-99.440480

35 CARR: T. C. (Los Reyes - El Tephé) - Tizayuca

CLAVE: 00014

RUTA: EM-HGO

AÑO: 2015

LUGAR	ESTACION				CLASIFICACION VEHICULAR EN PORCIENTO														COORDENADAS	
	KM	TE	SC	TDPA	M	A	B	C2	C3	T3S2	T3S3	T3S2R4	OTROS	A	B	C	K'	D	LATITUD	LONGITUD
T. C. Los Reyes - El Tephé	0.00	3	0	5397	0.3	89.6	1.5	3.2	1.4	2.3	0.9	0.6	0.2	89.9	1.5	8.6	0.078	0.544	19.784667	-99.025467
Lim. Edos. Term. Mex. Ppia. Hgo.	6.50																			
Tizayuca	8.00	1	0	7745	0.3	85.3	1.4	5.5	1.5	3.8	1.3	0.6	0.3	85.6	1.4	13.0	0.065	0.502	19.825567	-98.990867

36 CARR: Tepeji del Río - T.C. (México - Querétaro)

CLAVE: 13104

RUTA: HGO

AÑO: 2015

LUGAR	ESTACION				CLASIFICACION VEHICULAR EN PORCIENTO														COORDENADAS	
	KM	TE	SC	TDPA	M	A	B	C2	C3	T3S2	T3S3	T3S2R4	OTROS	A	B	C	K'	D	LATITUD	LONGITUD
T. C. Ent. Tepeji del Río - Tlahuelilpan de Ocampo	0.00	3	0	6245	0.3	84.0	2.1	8.2	2.0	1.9	0.9	0.5	0.1	84.3	2.1	13.6	0.082	0.506	19.945560	-99.343890
T. C. México - Querétaro	12.40	1	0	3935	0.4	85.7	1.8	6.7	1.8	2.2	0.6	0.6	0.2	86.1	1.8	12.1	0.065	0.504	19.976743	-99.435370

37 CARR: Tlahuelilpan - San Agustín Tlaxiaca

CLAVE: 13435

RUTA: HGO

AÑO: 2015

LUGAR	ESTACION				CLASIFICACION VEHICULAR EN PORCIENTO														COORDENADAS	
	KM	TE	SC	TDPA	M	A	B	C2	C3	T3S2	T3S3	T3S2R4	OTROS	A	B	C	K'	D	LATITUD	LONGITUD
Tlahuelilpan	0.00	3	0	2756	0.2	91.5	2.2	3.0	1.7	0.8	0.3	0.2	0.1	91.7	2.2	6.1	0.081	0.502	20.137280	-99.225674

HIDALGO

37 CARR: Tlahuelilpan - San Agustín Tlaxiaca

CLAVE: 13435

RUTA: HGO

AÑO: 2015

LUGAR	ESTACION				CLASIFICACION VEHICULAR EN PORCIENTO														COORDENADAS	
	KM	TE	SC	TDPA	M	A	B	C2	C3	T3S2	T3S3	T3S2R4	OTROS	A	B	C	K'	D	LATITUD	LONGITUD
Ignacio Zaragoza	25.50	3	0	2850	0.2	91.1	3.0	3.1	1.3	0.7	0.3	0.2	0.1	91.3	3.0	5.7	0.091	0.515	20.131059	-98.995966
T. C. (La Colonia - Portezuelo)	48.00	1	0	5876	1.1	87.4	2.1	4.5	0.6	2.7	0.5	0.4	0.7	88.5	2.1	9.4	0.085	0.539	20.120345	-98.905200

38 CARR: Calpulalpan - El Ocote

CLAVE: 00054

RUTA: MEX-HGO

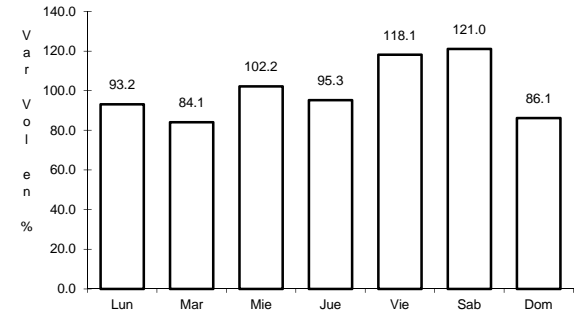
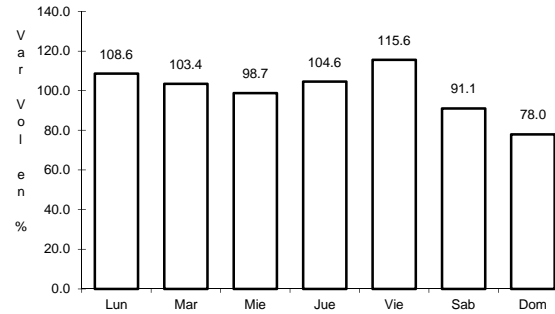
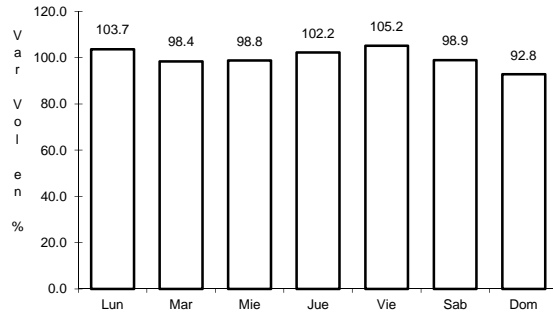
AÑO: 2015

LUGAR	ESTACION				CLASIFICACION VEHICULAR EN PORCIENTO														COORDENADAS	
	KM	TE	SC	TDPA	M	A	B	C2	C3	T3S2	T3S3	T3S2R4	OTROS	A	B	C	K'	D	LATITUD	LONGITUD
Calpulalpan	0.00	3	0	8421	1.5	75.1	1.8	7.1	2.1	8.3	2.0	1.2	0.9	76.6	1.8	21.6	0.073	0.534	19.594532	-98.573660
X. C. Arco Norte de La Ciudad de México	4.00	3	0	7443	0.2	87.2	1.2	3.7	1.3	3.8	1.5	0.8	0.3	87.4	1.2	11.4	0.101	0.509	19.626983	-98.541950
Lim. Edos. Term. Tlax. Ppia. Hgo.	5.00																			
Apan	19.58	3	1	4442	0.2	91.4	1.3	3.8	1.4	0.9	0.6	0.3	0.1	91.6	1.3	7.1	0.081	0.505	19.721850	-98.462400
Apan	19.58	3	2	4349	0.2	92.5	1.1	3.5	1.2	0.7	0.4	0.3	0.1	92.7	1.1	6.2	0.083	0.505	19.721850	-98.462400
Tepeapulco	34.92	3	0	4384	0.2	93.7	1.2	3.1	0.7	0.7	0.2	0.1	0.1	93.9	1.2	4.9	0.103	0.515	19.803033	-98.563200
X. C. Venta de Carpio - Tulancingo	51.18	1	1	1600	0.1	87.5	1.3	7.3	2.1	0.8	0.6	0.1	0.2	87.6	1.3	11.1	0.087	0.512	19.919267	-98.577583
X. C. Venta de Carpio - Tulancingo	51.18	1	2	1522	0.5	88.3	1.1	6.2	2.5	0.8	0.2	0.3	0.1	88.8	1.1	10.1	0.080	0.512	19.919267	-98.577583
X. C. Venta de Carpio - Tulancingo	51.18	3	0	2059	0.5	91.3	1.2	4.7	1.5	0.5	0.2	0.1	0.0	91.8	1.2	7.0	0.100	0.515	19.927715	-98.582875
El Ocote	70.44	1	0	3019	0.3	93.3	0.9	4.0	1.0	0.3	0.2	0.0	0.0	93.6	0.9	5.5	0.098	0.513	20.047873	-98.617761

1 CARR: Álamo - Huejutla de Reyes

CLAVE: 00116

RUTA: MEX-127



Km: 0.00 Tipo: 3 Sent: 0

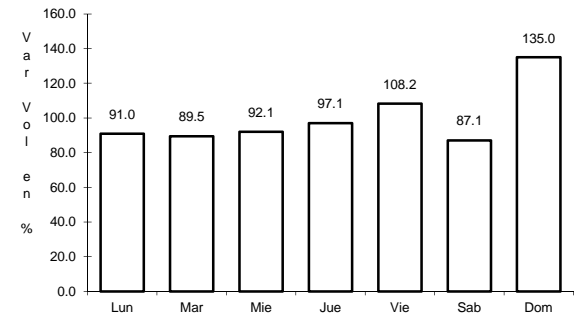
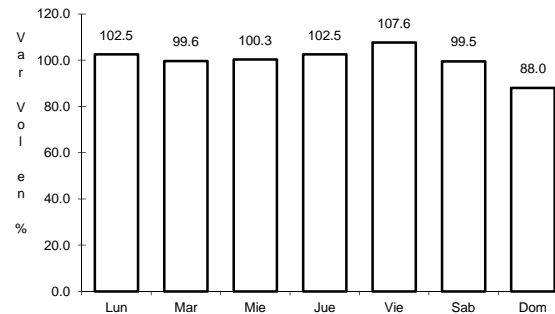
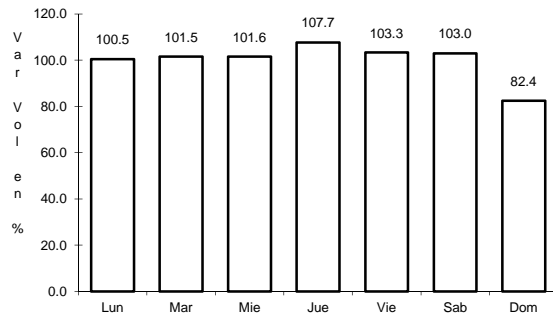
Km: 73.00 Tipo: 1 Sent: 0

Km: 78.00 Tipo: 3 Sent: 0

2 CARR: Apizaco - Tejocotal

CLAVE: 00430

RUTA: MEX-119



Km: 0.00 Tipo: 3 Sent: 1

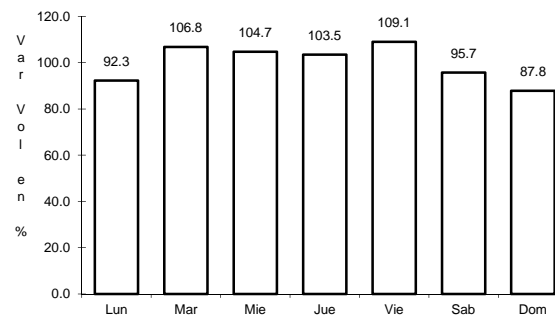
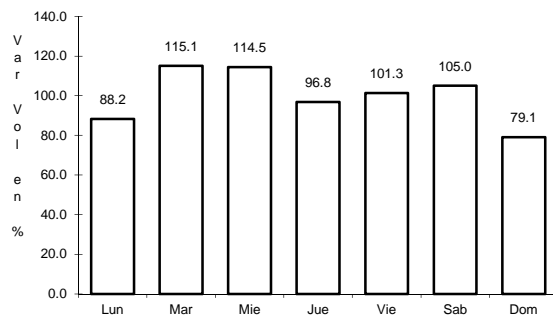
Km: 0.00 Tipo: 3 Sent: 2

Km: 113.15 Tipo: 1 Sent: 0

3 CARR: Ent. Colonia - Portezuelo

CLAVE: 13257

RUTA: MEX-085



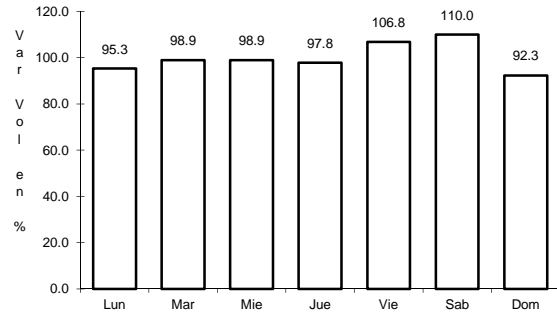
Km: 0.00 Tipo: 3 Sent: 1

Km: 0.00 Tipo: 3 Sent: 2

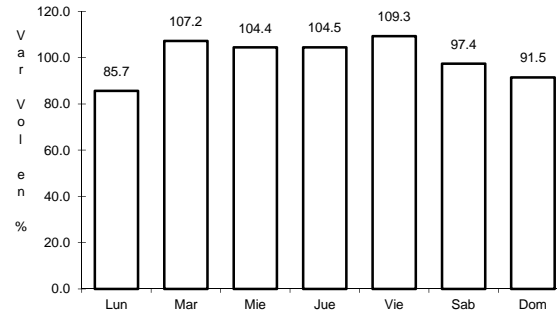
4 CARR: Ent. Jorobas - Tula

CLAVE: 00159

RUTA: MEX-087



Km: 0.00 Tipo: 3 Sent: 1

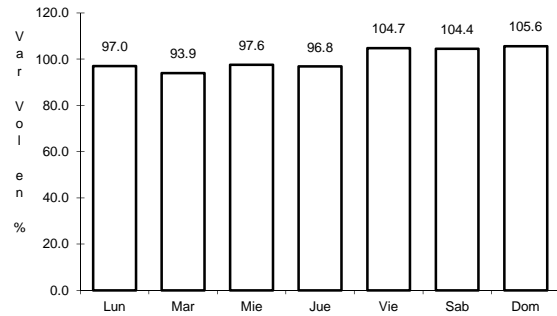


Km: 0.00 Tipo: 3 Sent: 2

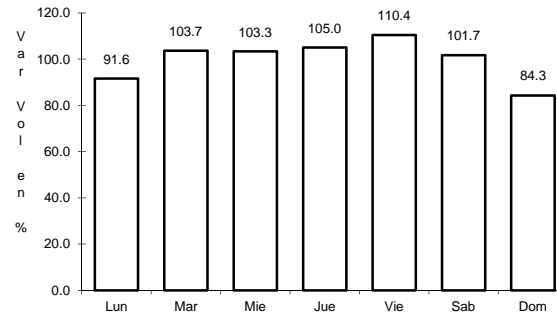
5 CARR: México - Pachuca (Libre)

CLAVE: 00431

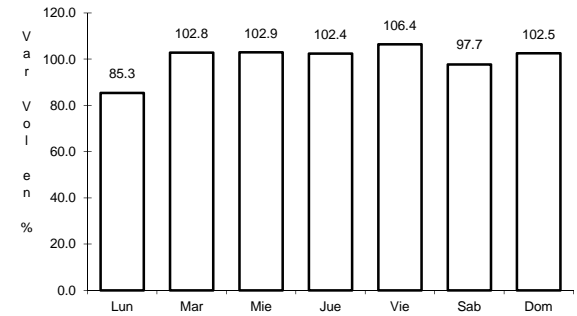
RUTA: MEX-085



Km: 26.93 Tipo: 1 Sent: 0



Km: 86.50 Tipo: 1 Sent: 1

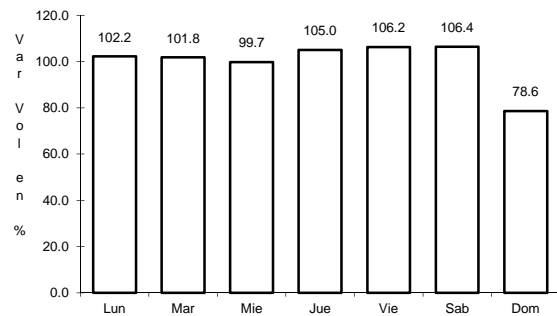


Km: 86.50 Tipo: 1 Sent: 2

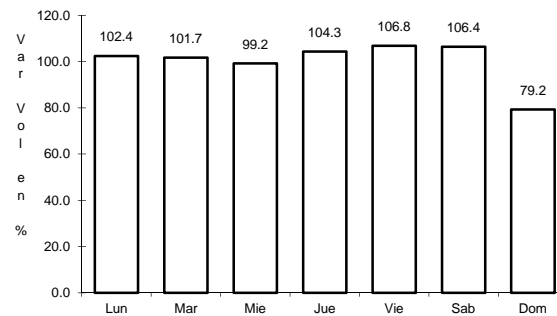
6 CARR: Pachuca - Cd. Sahagún

CLAVE: 13088

RUTA: MEX



Km: 0.00 Tipo: 3 Sent: 1

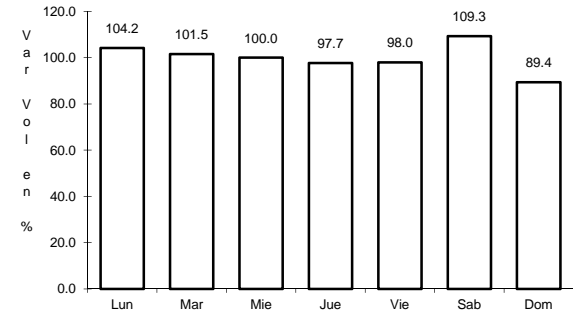
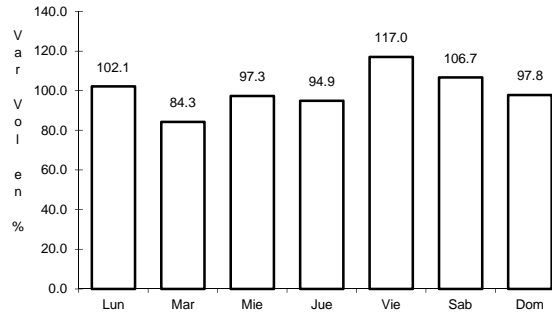
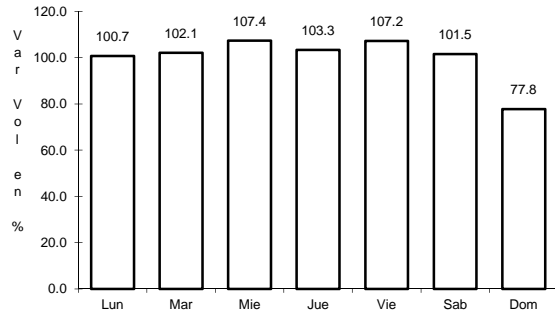


Km: 0.00 Tipo: 3 Sent: 2

7 CARR: Pachuca - Temporal

CLAVE: 00113

RUTA: MEX-105



Km: 0.00 Tipo: 3 Sent: 0

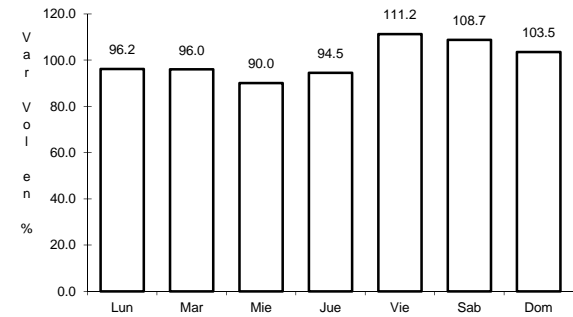
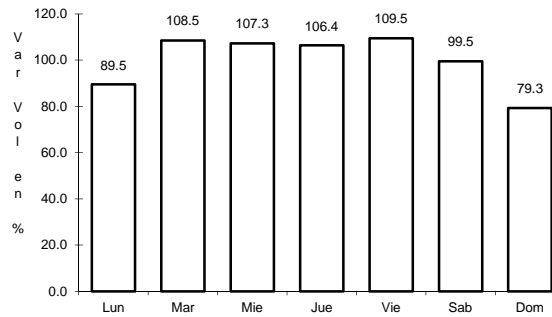
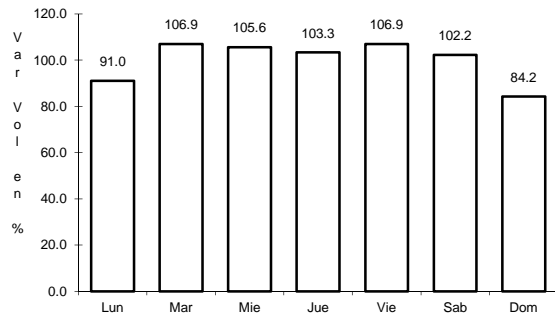
Km: 129.80 Tipo: 1 Sent: 0

Km: 260.68 Tipo: 1 Sent: 0

8 CARR: Pachuca - Tuxpam

CLAVE: 00608

RUTA: MEX-130



Km: 2.60 Tipo: 3 Sent: 1

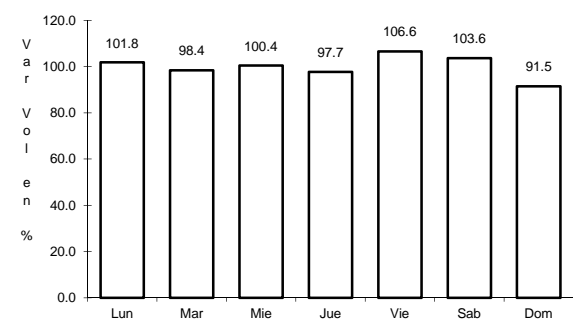
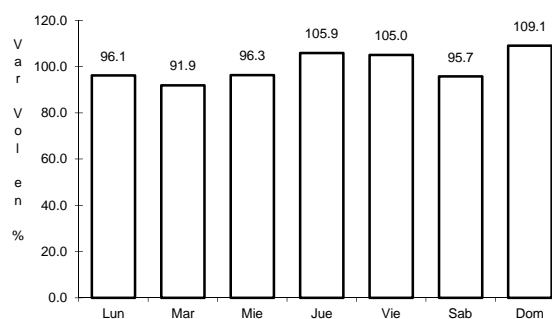
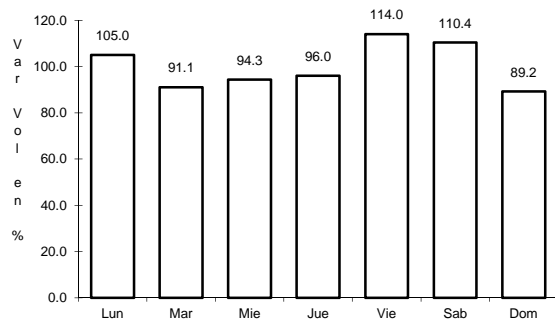
Km: 2.60 Tipo: 3 Sent: 2

Km: 141.75 Tipo: 1 Sent: 0

9 CARR: Portezuelo - Cd. Valles

CLAVE: 00023

RUTA: MEX-085



Km: 0.00 Tipo: 3 Sent: 0

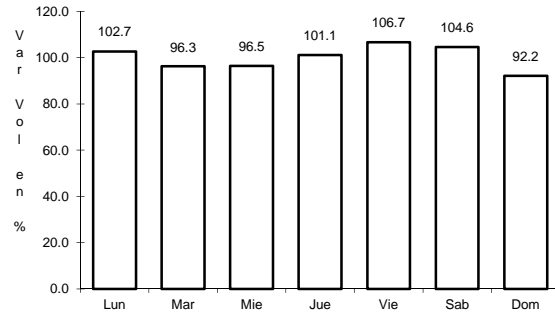
Km: 154.00 Tipo: 3 Sent: 0

Km: 300.00 Tipo: 1 Sent: 0

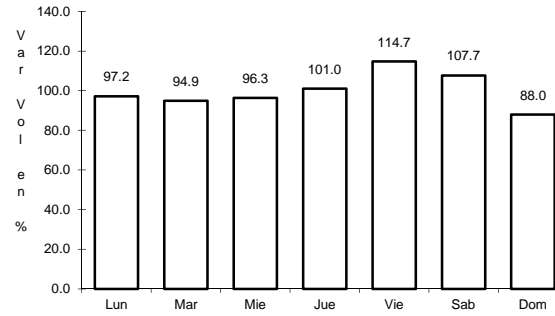
10 CARR: Portezuelo - Palmillas

CLAVE: 00194

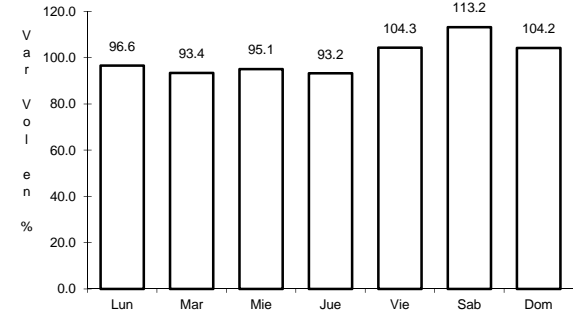
RUTA: MEX-045



Km: 0.00 Tipo: 3 Sent: 1



Km: 0.00 Tipo: 3 Sent: 2

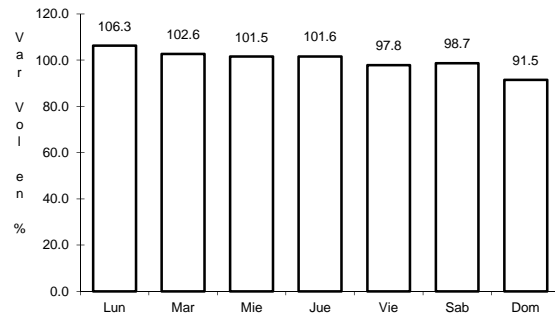


Km: 80.00 Tipo: 1 Sent: 0

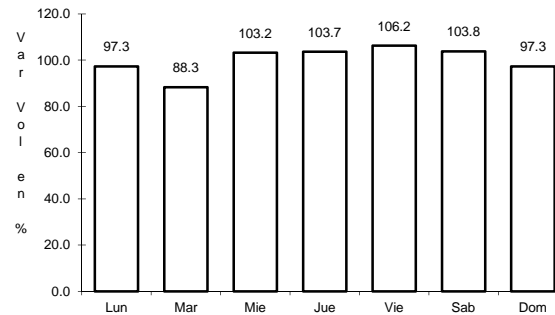
11 CARR: Tamazunchale - San Felipe Orizatlán

CLAVE: 00609

RUTA: MEX-085



Km: 0.00 Tipo: 3 Sent: 0

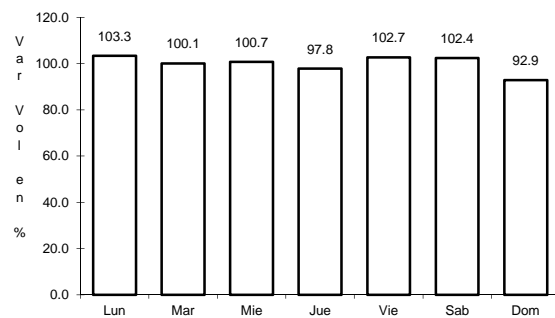


Km: 27.10 Tipo: 1 Sent: 0

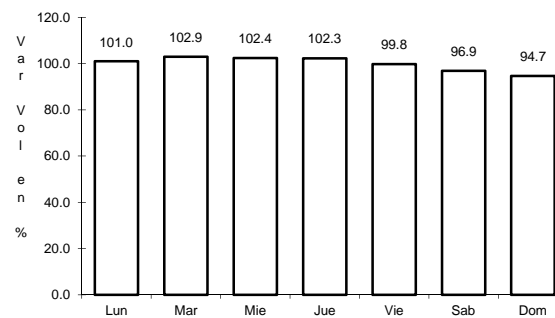
12 CARR: Venta de Carpio - T. C. (Pachuca - Túxpam)

CLAVE: 00455

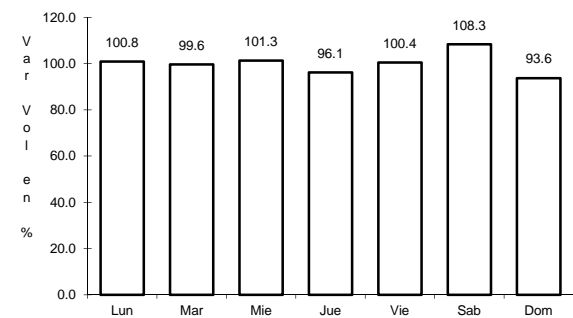
RUTA: MEX-132



Km: 6.42 Tipo: 3 Sent: 1



Km: 6.42 Tipo: 3 Sent: 2

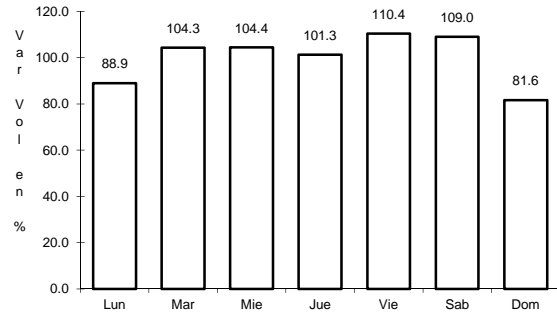


Km: 31.79 Tipo: 3 Sent: 0

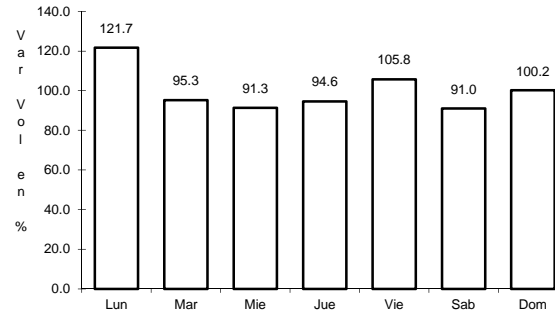
13 CARR: Ent. Tulancingo - Venta Grande (Cuota)

CLAVE: 00026

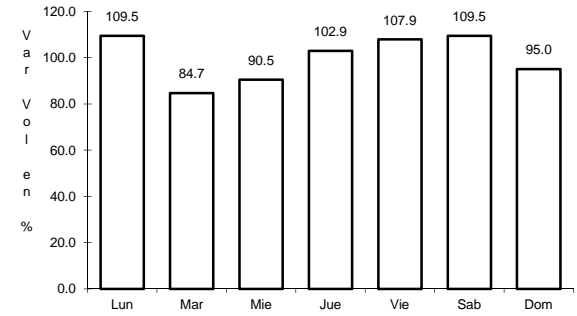
RUTA: MEX-132D



Km: 7.80 Tipo: 1 Sent: 0



Km: 21.80 Tipo: 1 Sent: 0

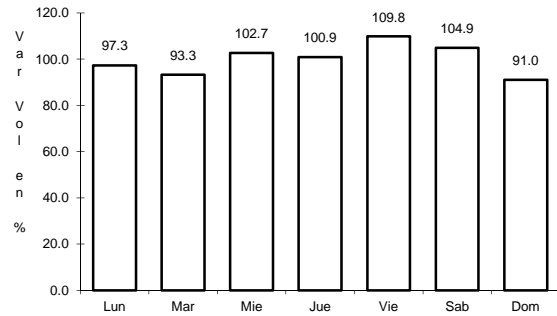


Km: 39.60 Tipo: 1 Sent: 0

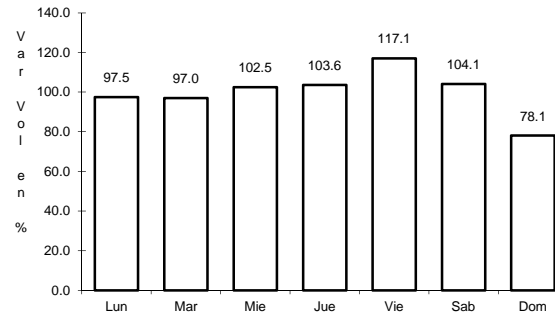
14 CARR: Libramiento Norte de la Ciudad de México (Cuota)

CLAVE: 0902

RUTA: MEX-M40D



Km: 12.90 Tipo: 1 Sent: 1

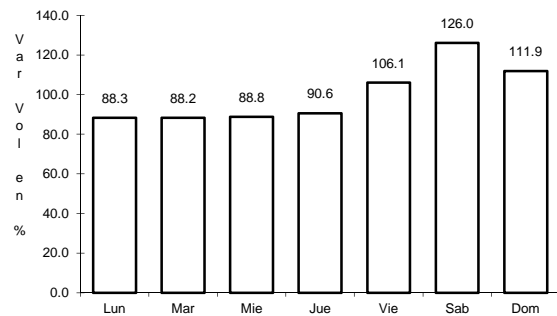


Km: 12.90 Tipo: 1 Sent: 2

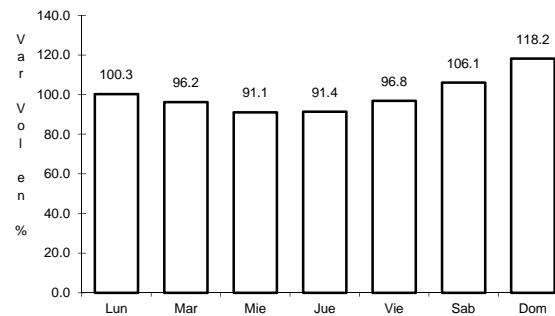
15 CARR: México - Pachuca (Cuota)

CLAVE: 00432

RUTA: MEX-085D



Km: 25.00 Tipo: 3 Sent: 1

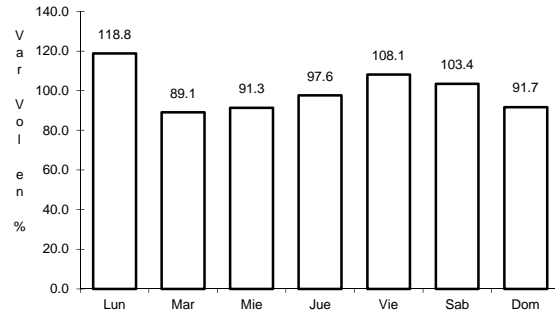


Km: 25.00 Tipo: 3 Sent: 2

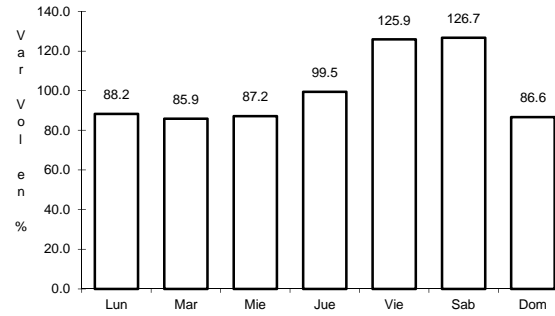
16 CARR: Tejocotal - Nuevo Necaxa (Cuota)

CLAVE: 00211

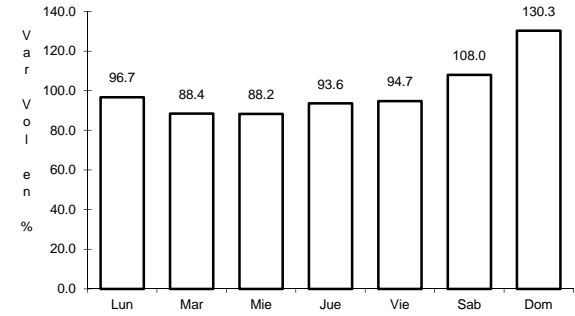
RUTA: MEX-132D



Km: 0.00 Tipo: 3 Sent: 0



Km: 17.00 Tipo: 1 Sent: 1

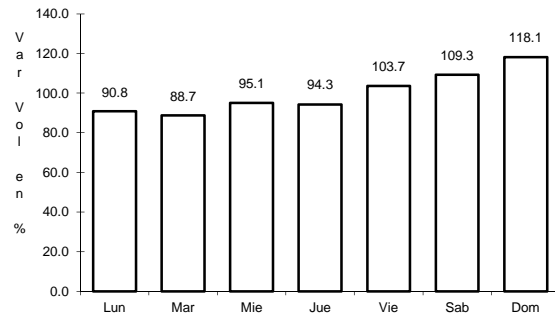


Km: 17.00 Tipo: 1 Sent: 2

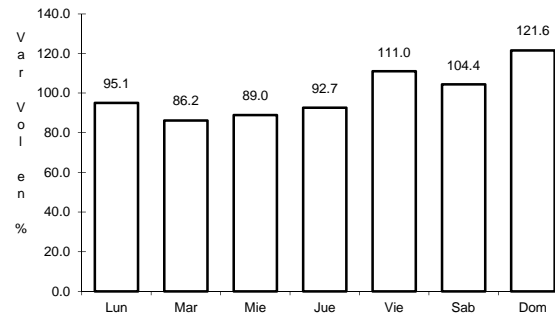
17 CARR: México - Querétaro (Cuota)

CLAVE: 00411

RUTA: MEX-057-MEX-057D



Km: 56.18 Tipo: 1 Sent: 1

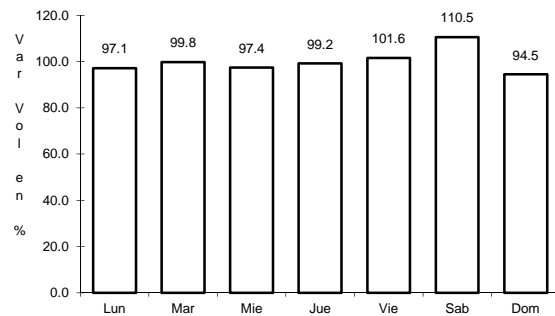


Km: 56.18 Tipo: 1 Sent: 2

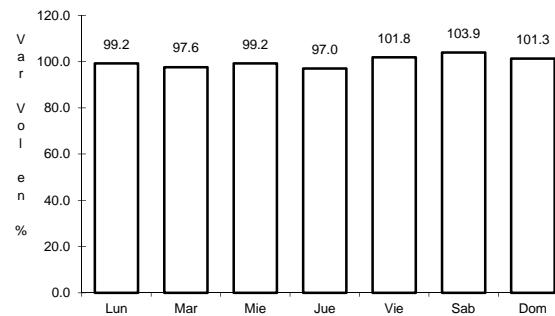
18 CARR: Actopan - Progreso

CLAVE: 13038

RUTA: HGO



Km: 0.00 Tipo: 3 Sent: 1

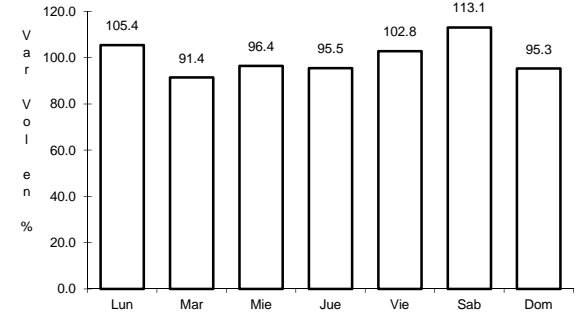
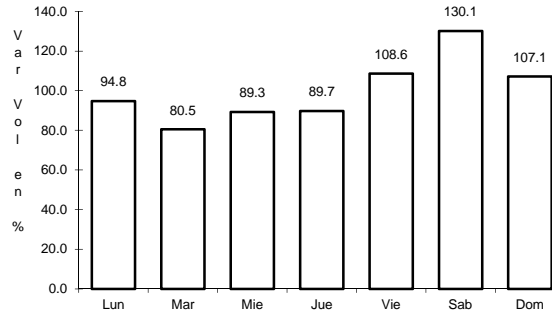
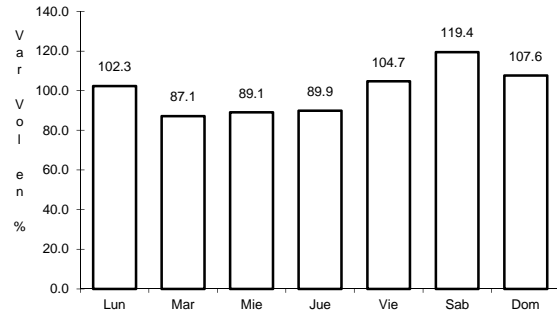


Km: 0.00 Tipo: 3 Sent: 2

19 CARR: El Saucillo - Amealco

CLAVE: 13103

RUTA: HGO-103



Km: 0.00 Tipo: 3 Sent: 0

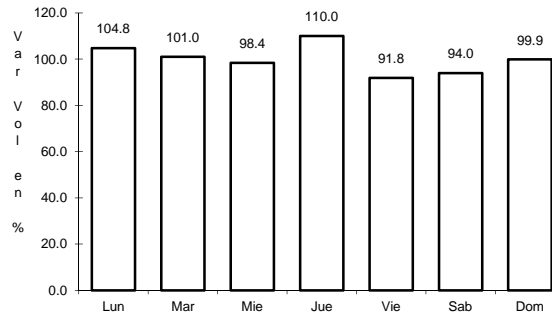
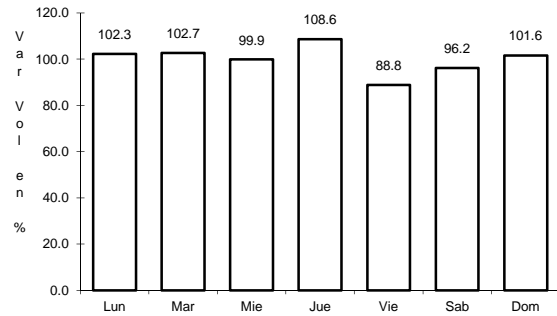
Km: 11.00 Tipo: 3 Sent: 0

Km: 21.40 Tipo: 1 Sent: 0

20 CARR: Ent. Emiliano Zapata - Cd. Sahagún

CLAVE: 13255

RUTA: HGO



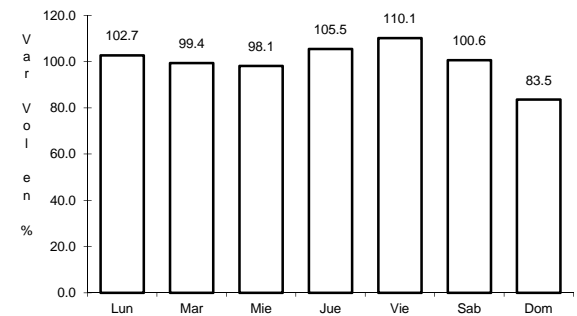
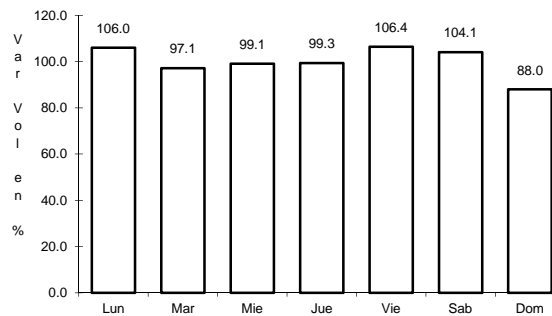
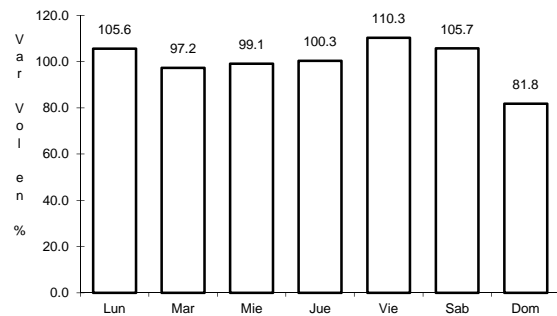
Km: 2.70 Tipo: 1 Sent: 1

Km: 2.70 Tipo: 1 Sent: 2

21 CARR: Ent. Tepeji del Río - Tlahuelilpan

CLAVE: 13017

RUTA: HGO-017



Km: 3.00 Tipo: 3 Sent: 1

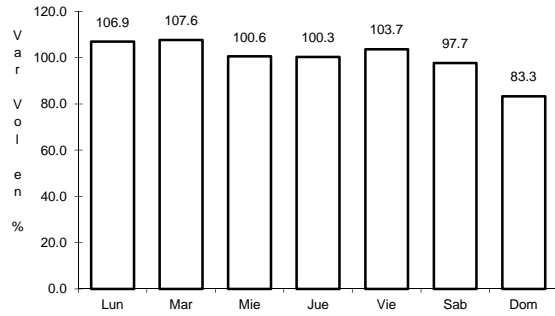
Km: 3.00 Tipo: 3 Sent: 2

Km: 18.00 Tipo: 1 Sent: 0

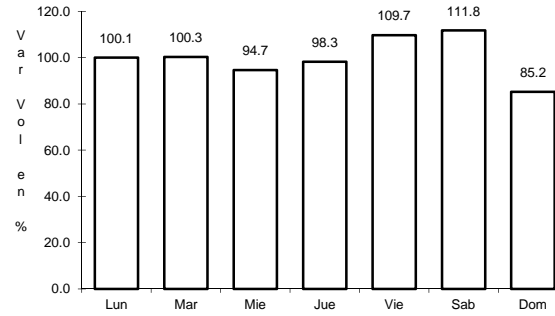
22 CARR: Ent. Tolman - Cd. Sahagún

CLAVE: 00119

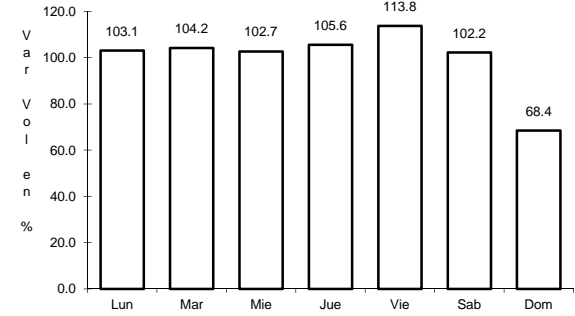
RUTA: EM-009-HGO



Km: 0.00 Tipo: 3 Sent: 0



Km: 21.00 Tipo: 3 Sent: 0

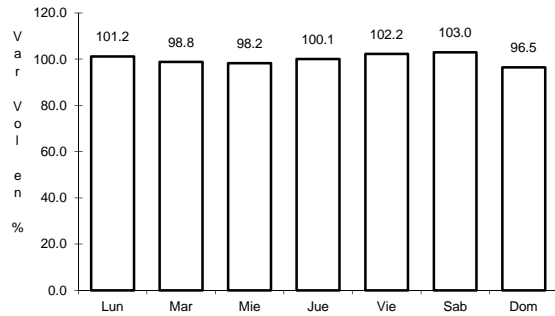


Km: 32.00 Tipo: 1 Sent: 0

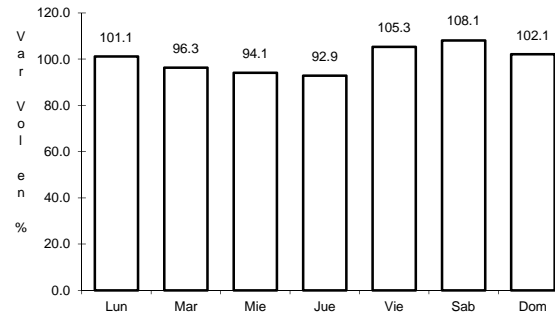
23 CARR: Francisco I. Madero - Tula de Allende

CLAVE: 13043

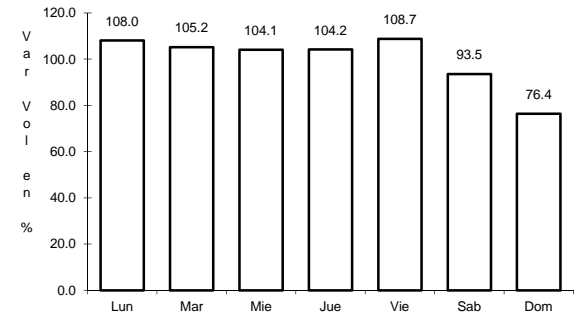
RUTA: HGO



Km: 0.00 Tipo: 3 Sent: 0



Km: 38.20 Tipo: 1 Sent: 0

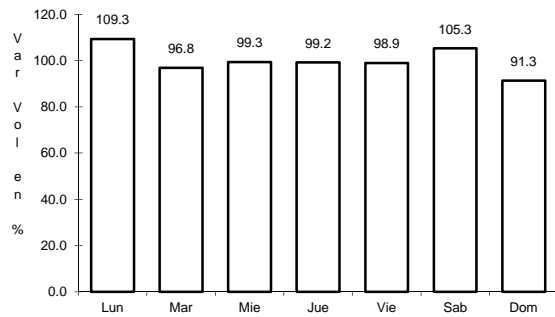


Km: 52.70 Tipo: 1 Sent: 0

24 CARR: Huichapan - Tecozautla

CLAVE: 13030

RUTA: HGO-030

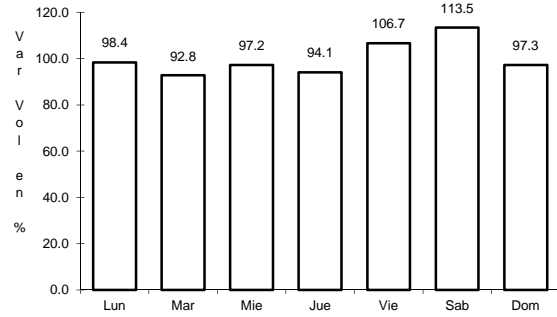


Km: 0.00 Tipo: 3 Sent: 0

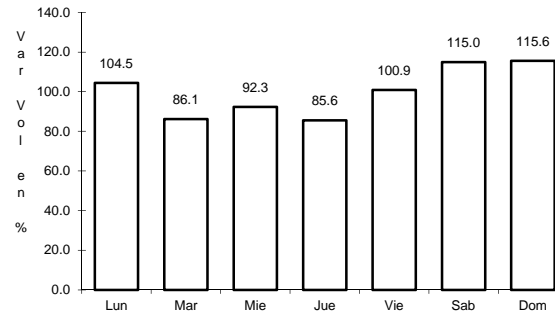
25 CARR: Jilotepec - Maravillas

CLAVE: 00015

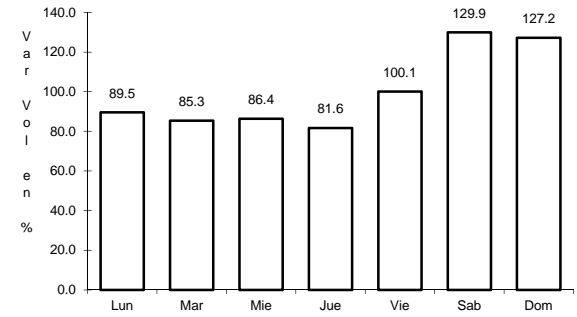
RUTA: EM-HGO



Km: 0.00 Tipo: 3 Sent: 0



Km: 21.30 Tipo: 1 Sent: 0

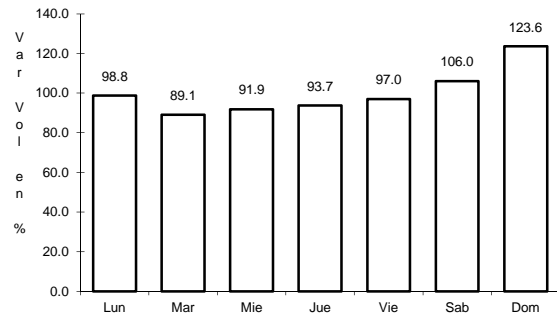


Km: 40.00 Tipo: 1 Sent: 0

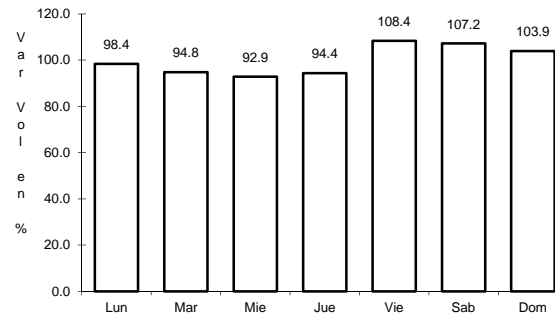
26 CARR: Libramiento de Atotonilco El Grande

CLAVE: 13238

RUTA: HGO



Km: 0.00 Tipo: 3 Sent: 0

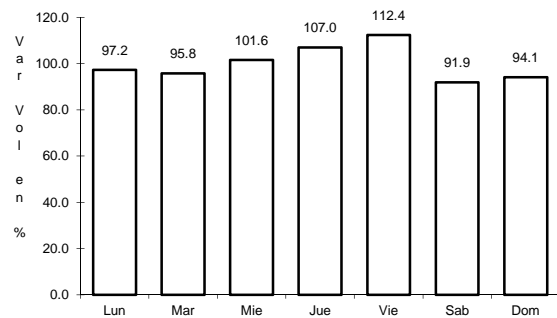


Km: 6.30 Tipo: 1 Sent: 0

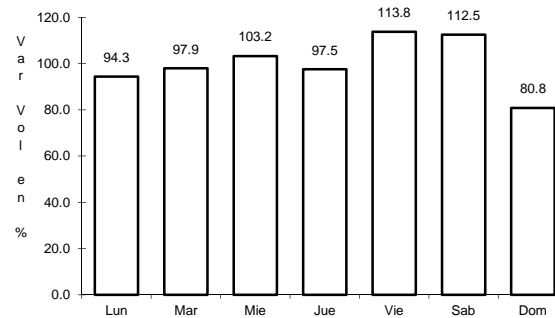
27 CARR: Lolotla - Atlapexco

CLAVE: 13238

RUTA: HGO



Km: 0.00 Tipo: 3 Sent: 0

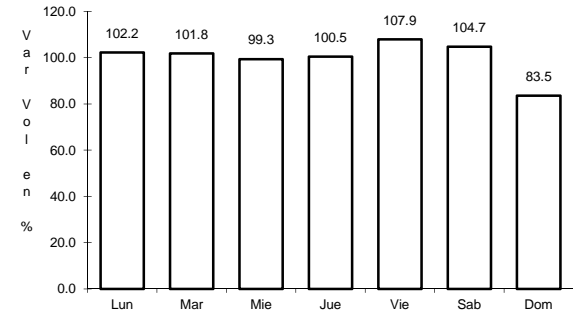
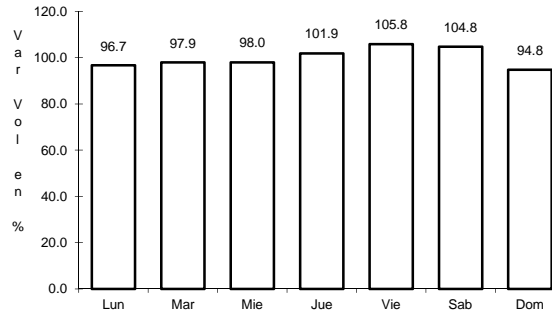
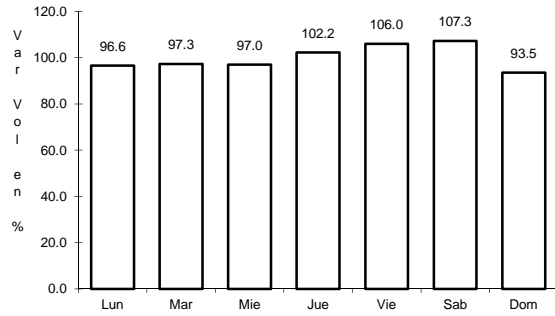


Km: 68.00 Tipo: 1 Sent: 0

28 CARR: Los Reyes - El Tephé

CLAVE: 00021

RUTA: EM-HGO



Km: 1.35 Tipo: 3 Sent: 1

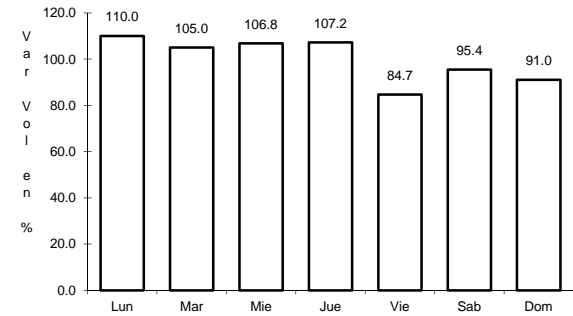
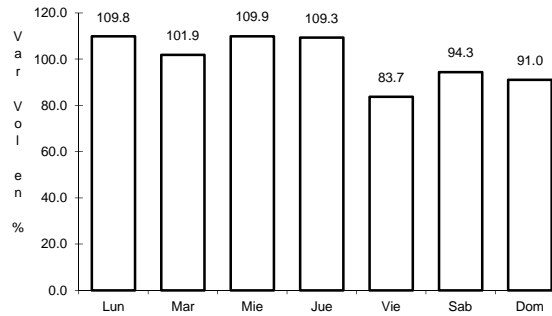
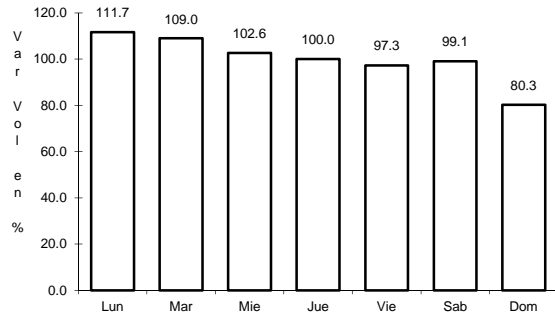
Km: 1.35 Tipo: 3 Sent: 2

Km: 42.00 Tipo: 1 Sent: 0

29 CARR: Otumba - Tizayuca

CLAVE: 00012

RUTA: EM-HGO



Km: 0.00 Tipo: 3 Sent: 0

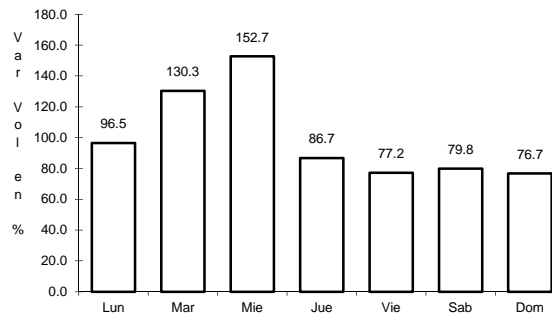
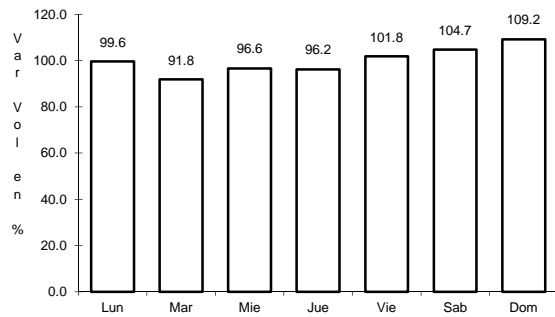
Km: 37.10 Tipo: 1 Sent: 1

Km: 37.10 Tipo: 1 Sent: 2

30 CARR: Ramal a El Chico

CLAVE: 13256

RUTA: HGO



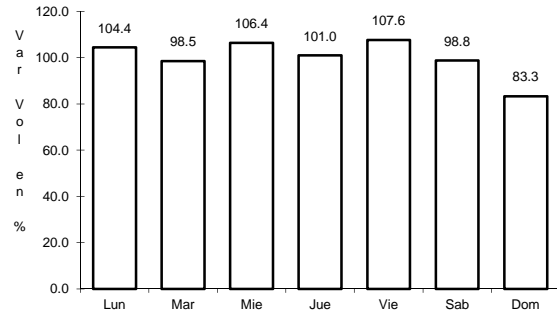
Km: 0.00 Tipo: 3 Sent: 0

Km: 21.00 Tipo: 1 Sent: 0

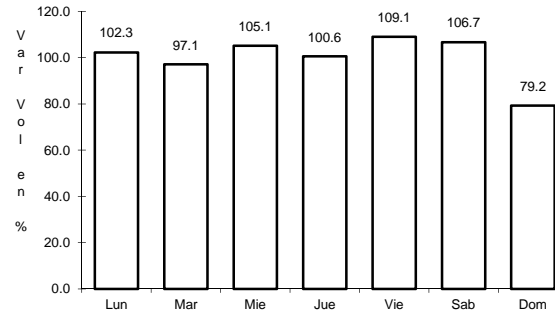
31 CARR: Ramal a Pachuca

CLAVE: 13254

RUTA: HGO



Km: 0.00 Tipo: 3 Sent: 1

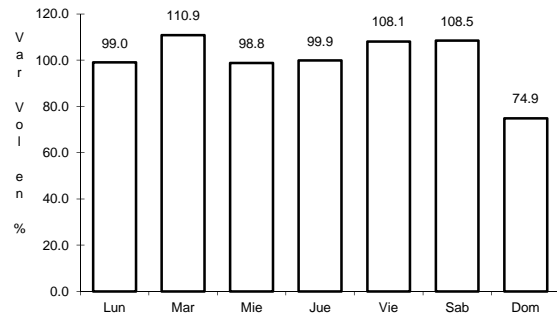


Km: 0.00 Tipo: 3 Sent: 2

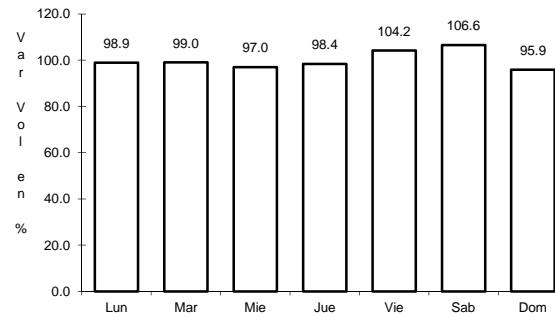
32 CARR: San Alejo - Huayacocotla

CLAVE: 00132

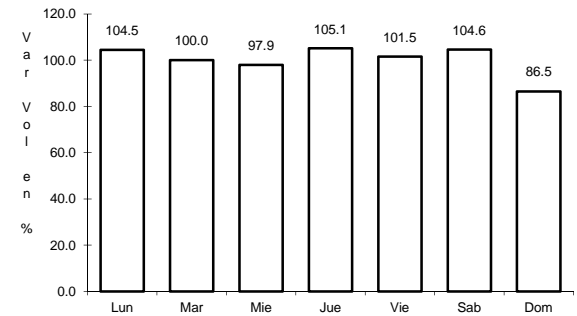
RUTA: HGO-051-VER-113



Km: 0.00 Tipo: 3 Sent: 0



Km: 29.48 Tipo: 3 Sent: 0

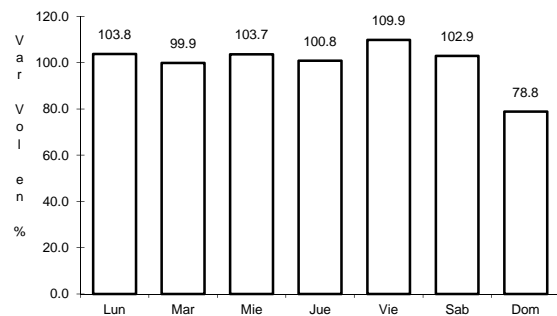


Km: 66.00 Tipo: 1 Sent: 0

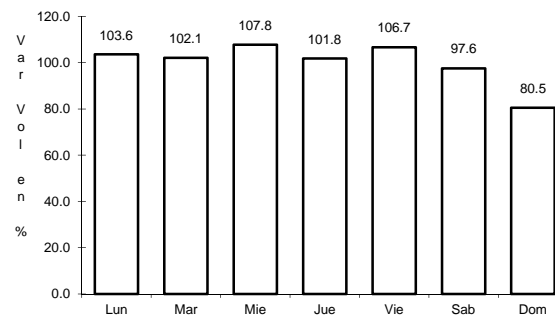
33 CARR: San Felipe Orizatlán - Huejutla de Reyes

CLAVE: 13258

RUTA: HGO



Km: 0.00 Tipo: 3 Sent: 0

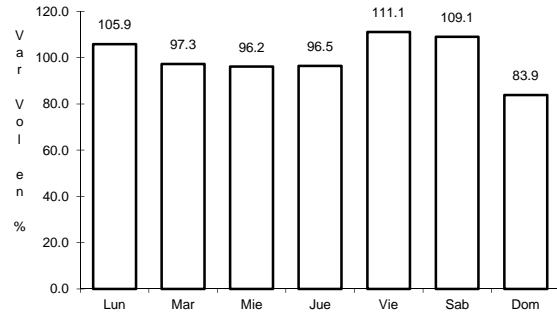


Km: 25.00 Tipo: 1 Sent: 0

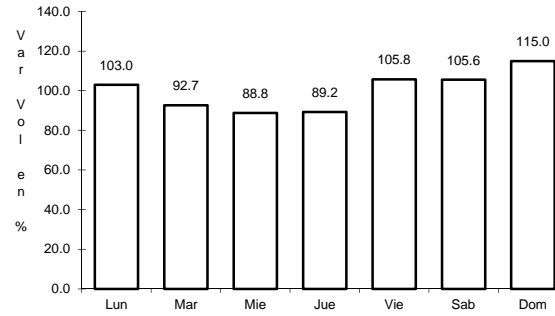
34 CARR: Santo Domingo - T. C. (México - Querétaro)

CLAVE: 00433

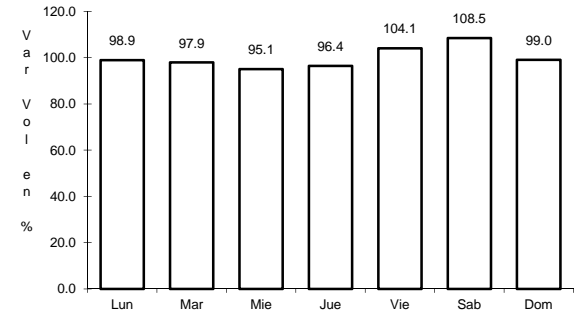
RUTA: EM-011-HGO



Km: 0.00 Tipo: 3 Sent: 0



Km: 65.84 Tipo: 1 Sent: 1

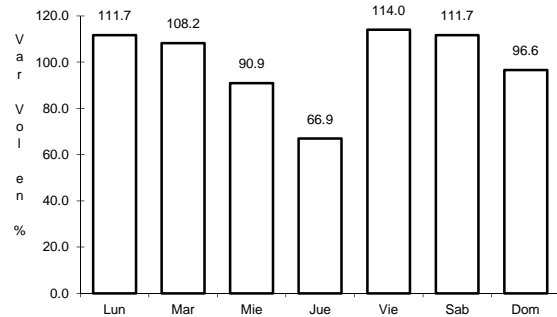


Km: 65.84 Tipo: 1 Sent: 2

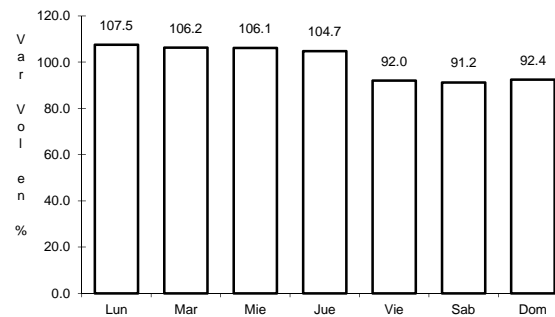
35 CARR: T. C. (Los Reyes - El Tephé) - Tizayuca

CLAVE: 00014

RUTA: EM-HGO



Km: 0.00 Tipo: 3 Sent: 0

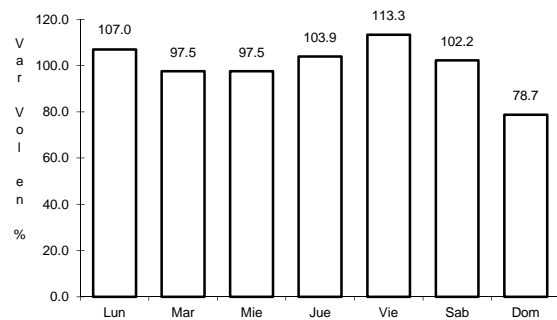


Km: 8.00 Tipo: 1 Sent: 0

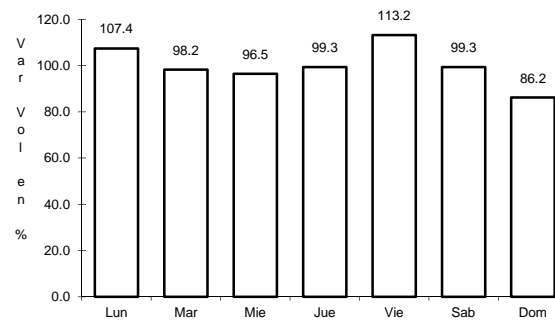
36 CARR: Tepeji del Río - T.C. (México - Querétaro)

CLAVE: 13104

RUTA: HGO



Km: 0.00 Tipo: 3 Sent: 0

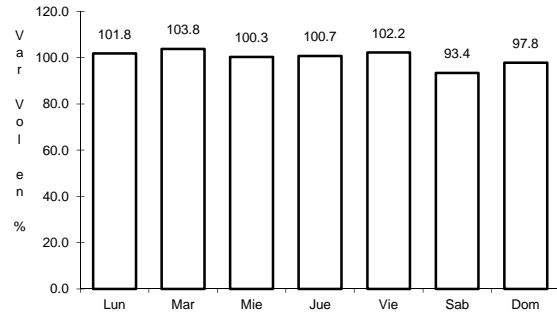


Km: 12.40 Tipo: 1 Sent: 0

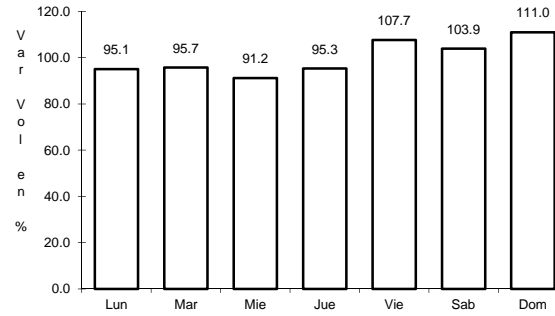
37 CARR: Tlahuelilpan - San Agustín Tlaxiaca

CLAVE: 13435

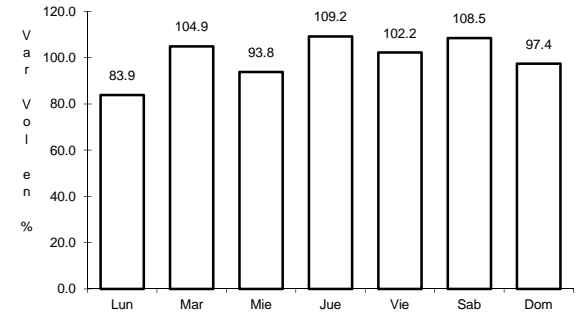
RUTA: HGO



Km: 0.00 Tipo: 3 Sent: 0



Km: 25.50 Tipo: 3 Sent: 0

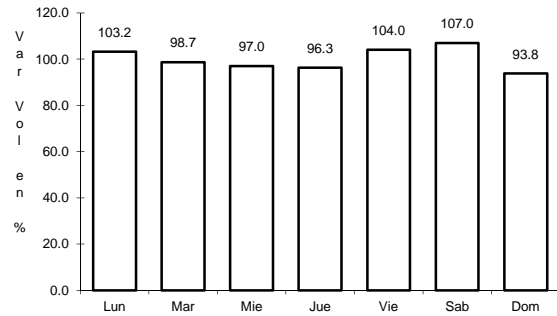


Km: 48.00 Tipo: 1 Sent: 0

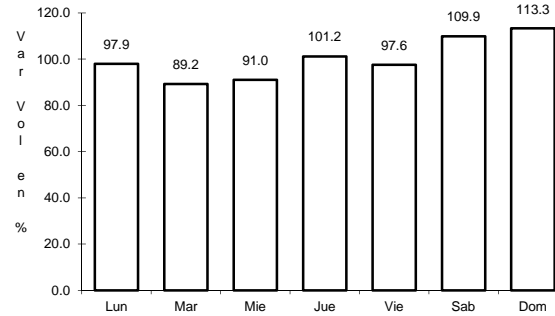
38 CARR: Calpulalpan - El Ocote

CLAVE: 00054

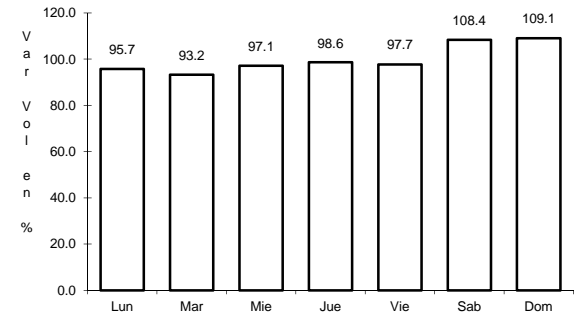
RUTA: MEX-HGO



Km: 0.00 Tipo: 3 Sent: 0



Km: 34.92 Tipo: 3 Sent: 0



Km: 70.44 Tipo: 1 Sent: 0