

GUANAJUATO

---RED FEDERAL LIBRE---

1	Acámbaro - Celaya	MEX-051
2	Acámbaro - Zinapécuaro	MEX-120
3	Dolores Hidalgo - Ojuelos de Jalisco	MEX-051
4	Ent. Buenavista - San Miguel de Allende	MEX-057
5	Ent. de Zaragoza - San Felipe	MEX-037
6	Ent. La Fortaleza - Cortázar	MEX-045
7	Ent. Santa Teresa - Silao	MEX-110
8	Irapuato - León	MEX-045
9	Irapuato - Zapotlanejo	MEX-090
10	La Noria - Acámbaro	MEX-120
11	León - Aguascalientes	MEX-045
12	Manuel Doblado - La Piedad	MEX-084
13	Maravatío - Acámbaro	MEX-061
14	Morelia - Salamanca	MEX-043
15	Munguía - Las Adjuntas	MEX-084
16	Nuevo Libramiento de Irapuato	MEX-045
17	Querétaro - Irapuato (Libre)	MEX-045
18	Querétaro - San Luis Potosí	MEX-057
19	Ramal a Las Adjuntas	MEX-084
20	Ramal a San José Iturbide	MEX-057
21	Salvatierra - Ent. Yuriria	MEX-043
22	San Luis de La Paz - Cañada de Moreno	MEX-110
23	San Luis de La Paz - Guanajuato	MEX-110

---RED FEDERAL DE CUOTA---

24	León - Aguascalientes (Cuota)	MEX-045D
25	Libramiento Norponiente de Irapuato (Cuota)	MEX-IRA 020D
26	Libramiento Norte de la Piedad (Cuota)	MEX-110D
27	Morelia - Salamanca (Cuota)	MEX-043D
28	Querétaro - Irapuato (Cuota)	MEX-045D

---RED ESTATAL LIBRE---

29	Ent. Begoña - Ent. Presa de Manantiales	GTO
30	Ent. San Miguel de Allende - Dr. Mora	GTO-001
31	Guanajuato - Santa Rita	GTO
32	Jalostotitlán - Purísima de Bustos	JAL-GTO
33	León - Manuel Doblado	GTO-037
34	León - San Felipe Torres Mochas	GTO
35	Libramiento de Abasolo	GTO
36	Libramiento de Salamanca	GTO
37	Libramiento de Salvatierra	GTO
38	Libramiento de San Felipe Torres Mochas	GTO
39	Libramiento de San Luis de La Paz	GTO
40	Manuel Doblado - Plan de Ayala	GTO
41	Nuevo Libramiento de León	GTO
42	Ramal a San Diego de La Unión	GTO
43	Romita - El Saucillo	GTO
44	Salamanca - Juventino Rosas	GTO
45	Salvatierra - Cortázar	GTO
46	San Luis de La Paz - San José Iturbide	GTO
47	Silao - La Romita	GTO
48	Silao - Los Arrastres	GTO
49	T. C. (Villa del Pueblito - Huimilpan) - Coroneo	QRO-GTO

---RED ESTATAL DE CUOTA---

50	Guanajuato - Silao (Cuota)	GTO-110D
51	Libramiento de Celaya (Cuota)	GTO-D

---CARRETERAS INTEGRADAS POR TRAMOS FEDERALES Y ESTATALES---

52	Celaya - Dolores Hidalgo	MEX-051-GTO
53	Cortázar - Valle de Santiago	MEX-GTO-017
54	Guanajuato - Los Infantes	MEX-110-GTO
55	Tepatitlán - Las Adjuntas	JAL/MEX-084

GUANAJUATO

1 CARR: Acámbaro - Celaya

CLAVE: 11066

RUTA: MEX-051

AÑO: 2015

LUGAR	ESTACION				CLASIFICACION VEHICULAR EN PORCIENTO														COORDENADAS	
	KM	TE	SC	TDPA	M	A	B	C2	C3	T3S2	T3S3	T3S2R4	OTROS	A	B	C	K'	D	LATITUD	LONGITUD
Acámbaro	0.00	3	1	2988	0.2	91.5	1.1	4.1	1.2	0.8	0.4	0.3	0.4	91.7	1.1	7.2	0.079	0.504	20.046640	-100.772760
Acámbaro	0.00	3	2	2937	0.1	91.2	1.6	3.9	1.5	0.9	0.3	0.3	0.2	91.3	1.6	7.1	0.077	0.504	20.046640	-100.772760
T. Izq. Inhamácuaro	13.50	1	0	5738	0.2	91.8	1.2	3.6	1.2	1.1	0.4	0.4	0.1	92.0	1.2	6.8	0.072	0.505	20.075830	-100.826950
Salvatierra	33.00	3	1	6676	0.2	85.5	2.8	6.5	1.7	1.9	0.6	0.7	0.1	85.7	2.8	11.5	0.091	0.501	20.223050	-100.857940
Salvatierra	33.00	3	2	6655	0.1	85.5	3.0	5.6	2.3	1.5	1.3	0.4	0.3	85.6	3.0	11.4	0.069	0.501	20.223050	-100.857940
T. Der. Rincón de Tamayo	59.60	3	1	9874	0.9	85.2	1.4	6.8	1.8	2.1	1.0	0.5	0.3	86.1	1.4	12.5	0.076	0.515	20.431361	-100.795528
T. Der. Rincón de Tamayo	59.60	3	2	10425	0.8	84.3	1.6	7.3	1.9	2.3	1.0	0.5	0.3	85.1	1.6	13.3	0.089	0.515	20.431361	-100.795528
X. C. Libramiento de Celaya	69.70	1	1	14192	0.1	91.3	1.2	3.6	1.0	1.4	0.8	0.4	0.2	91.4	1.2	7.4	0.077	0.510	20.481139	-100.808833
X. C. Libramiento de Celaya	69.70	1	2	14758	0.0	89.1	1.4	4.8	1.6	1.8	0.9	0.3	0.1	89.1	1.4	9.5	0.080	0.510	20.481139	-100.808833
Celaya	71.50																			

2 CARR: Acámbaro - Zinapécuaro

CLAVE: 00417

RUTA: MEX-120

AÑO: 2015

LUGAR	ESTACION				CLASIFICACION VEHICULAR EN PORCIENTO														COORDENADAS	
	KM	TE	SC	TDPA	M	A	B	C2	C3	T3S2	T3S3	T3S2R4	OTROS	A	B	C	K'	D	LATITUD	LONGITUD
Acámbaro	0.00	3	0	5658	0.1	89.8	2.2	5.3	1.2	0.7	0.3	0.2	0.2	89.9	2.2	7.9	0.094	0.506	20.000620	-100.730300
Lim. Edos. Term. Gto. Ppia. Mich.	12.80																			
Zinapécuaro	25.00	1	0	5778	2.5	84.3	0.9	7.7	0.4	3.0	0.5	0.1	0.6	86.8	0.9	12.3	0.102	0.502	19.868103	-100.818279

3 CARR: Dolores Hidalgo - Ojuelos de Jalisco

CLAVE: 00107

RUTA: MEX-051

AÑO: 2015

LUGAR	ESTACION				CLASIFICACION VEHICULAR EN PORCIENTO														COORDENADAS	
	KM	TE	SC	TDPA	M	A	B	C2	C3	T3S2	T3S3	T3S2R4	OTROS	A	B	C	K'	D	LATITUD	LONGITUD
Dolores Hidalgo	0.00	3	0	5510	0.2	85.1	2.0	6.7	2.0	2.3	1.0	0.4	0.3	85.3	2.0	12.7	0.072	0.508	21.178126	-100.947505
X. C. León - San Felipe	51.38	1	0	4349	0.2	85.9	2.0	6.9	1.9	1.8	0.7	0.4	0.2	86.1	2.0	11.9	0.089	0.507	21.464754	-101.209810
X. C. León - San Felipe	51.38	3	0	5146	0.0	89.2	1.7	4.7	1.7	1.6	0.7	0.2	0.2	89.2	1.7	9.1	0.099	0.508	21.492560	-101.230481
T. Izq. Ocampo	87.47	3	0	2638	2.0	70.0	2.4	15.0	2.6	4.4	2.1	0.7	0.8	72.0	2.4	25.6	0.080	0.500	21.653861	-101.476000
Lim. Edos. Term. Gto. Ppia. Jal.	104.10																			
T. C. San Luis Potosí - Lagos de Moreno	113.49	1	0	1810	2.1	68.2	2.3	15.1	4.0	5.5	1.3	0.6	0.9	70.3	2.3	27.4	0.078	0.528	21.854422	-101.591816

4 CARR: Ent. Buenavista - San Miguel de Allende

CLAVE: 00111

RUTA: MEX-057

AÑO: 2015

LUGAR	ESTACION				CLASIFICACION VEHICULAR EN PORCIENTO														COORDENADAS	
	KM	TE	SC	TDPA	M	A	B	C2	C3	T3S2	T3S3	T3S2R4	OTROS	A	B	C	K'	D	LATITUD	LONGITUD
T. C. Querétaro - San Luis Potosí	0.00	3	0	11743	0.1	84.6	2.6	5.4	2.5	2.7	1.2	0.6	0.3	84.7	2.6	12.7	0.077	0.518	20.821640	-100.455230

GUANAJUATO

4 CARR: Ent. Buenavista - San Miguel de Allende

CLAVE: 00111

RUTA: MEX-057

AÑO: 2015

LUGAR	ESTACION				CLASIFICACION VEHICULAR EN PORCIENTO												COORDENADAS			
	KM	TE	SC	TDPA	M	A	B	C2	C3	T3S2	T3S3	T3S2R4	OTROS	A	B	C	K'	D	LATITUD	LONGITUD
Lim. Edos. Term. Qro. Ppia. Gto.	7.91																			
T. Izq. Guadalupe	12.00	1	0	7233	0.1	88.4	2.1	3.5	1.5	2.2	1.1	0.7	0.4	88.5	2.1	9.4	0.086	0.513	20.882670	-100.570590
San Miguel de Allende	35.11	1	0	10972	0.1	87.0	3.3	4.9	1.8	1.6	0.6	0.3	0.4	87.1	3.3	9.6	0.095	0.504	20.902480	-100.709710

5 CARR: Ent. de Zaragoza - San Felipe

CLAVE: 00240

RUTA: MEX-037

AÑO: 2015

LUGAR	ESTACION				CLASIFICACION VEHICULAR EN PORCIENTO												COORDENADAS			
	KM	TE	SC	TDPA	M	A	B	C2	C3	T3S2	T3S3	T3S2R4	OTROS	A	B	C	K'	D	LATITUD	LONGITUD
T. C. Querétaro - San Luis Potosí	0.00	3	0	10955	1.2	59.8	2.5	13.3	2.8	15.0	2.3	1.8	1.3	61.0	2.5	36.5	0.073	0.507	21.965686	-100.819037
Lim. Edos. Term. S. L. P. Ppia. Gto.	32.00																			
San Felipe	72.00	1	0	6949	0.2	70.2	2.8	8.0	2.1	12.5	3.2	0.6	0.4	70.4	2.8	26.8	0.070	0.509	21.481438	-101.153340

6 CARR: Ent. La Fortaleza - Cortázar

CLAVE: 11017

RUTA: MEX-045

AÑO: 2015

LUGAR	ESTACION				CLASIFICACION VEHICULAR EN PORCIENTO												COORDENADAS			
	KM	TE	SC	TDPA	M	A	B	C2	C3	T3S2	T3S3	T3S2R4	OTROS	A	B	C	K'	D	LATITUD	LONGITUD
T. C. Querétaro - Irapuato (Libre)	0.00	3	1	12976	0.1	91.1	1.3	4.2	1.2	1.0	0.5	0.4	0.2	91.2	1.3	7.5	0.082	0.505	20.508389	-100.955750
T. C. Querétaro - Irapuato (Libre)	0.00	3	2	13263	0.0	91.6	1.1	4.2	1.2	1.0	0.4	0.4	0.1	91.6	1.1	7.3	0.087	0.505	20.508389	-100.955750
Cortazar	2.60																			

7 CARR: Ent. Santa Teresa - Silao

CLAVE: 11070

RUTA: MEX-110

AÑO: 2015

LUGAR	ESTACION				CLASIFICACION VEHICULAR EN PORCIENTO												COORDENADAS			
	KM	TE	SC	TDPA	M	A	B	C2	C3	T3S2	T3S3	T3S2R4	OTROS	A	B	C	K'	D	LATITUD	LONGITUD
T. C. Guanajuato - Los Infantes	0.00	3	0	9724	0.1	84.9	3.0	6.1	1.8	2.9	0.6	0.4	0.2	85.0	3.0	12.0	0.089	0.502	20.958690	-101.320110
X. C. Irapuato - León	11.30	1	1	15902	1.3	86.7	1.8	4.5	1.4	2.0	1.2	0.5	0.6	88.0	1.8	10.2	0.087	0.508	20.949565	-101.396434
X. C. Irapuato - León	11.30	1	2	16532	1.6	85.3	2.1	5.1	1.4	2.0	1.4	0.5	0.6	86.9	2.1	11.0	0.088	0.508	20.949565	-101.396434
Silao	12.00	1	1	9122	0.1	91.1	2.0	3.8	1.1	0.7	0.5	0.3	0.4	91.2	2.0	6.8	0.069	0.515	20.944982	-101.416332
Silao	12.00	1	2	9684	0.1	92.4	1.7	2.7	0.9	0.8	0.4	0.7	0.3	92.5	1.7	5.8	0.067	0.515	20.944982	-101.416332

8 CARR: Irapuato - León

CLAVE: 11123

RUTA: MEX-045

AÑO: 2015

LUGAR	ESTACION				CLASIFICACION VEHICULAR EN PORCIENTO												COORDENADAS			
	KM	TE	SC	TDPA	M	A	B	C2	C3	T3S2	T3S3	T3S2R4	OTROS	A	B	C	K'	D	LATITUD	LONGITUD
Irapuato	0.00																			

GUANAJUATO

8 CARR: Irapuato - León

CLAVE: 11123

RUTA: MEX-045

AÑO: 2015

LUGAR	ESTACION				CLASIFICACION VEHICULAR EN PORCIENTO												COORDENADAS			
	KM	TE	SC	TDPA	M	A	B	C2	C3	T3S2	T3S3	T3S2R4	OTROS	A	B	C	K'	D	LATITUD	LONGITUD
T. C. Libramiento Norponiente de Irapuato (Cuota)	7.88	3	1	26598	0.0	80.9	3.1	6.5	1.9	4.5	1.7	1.0	0.4	80.9	3.1	16.0	0.084	0.519	20.756900	-101.337230
T. C. Libramiento Norponiente de Irapuato (Cuota)	7.88	3	2	28679	0.0	79.4	3.6	6.7	2.9	4.2	2.3	0.6	0.3	79.4	3.6	17.0	0.076	0.519	20.756900	-101.337230
T. Der. Nuevo Libramiento	8.80	3	1	27730	0.0	87.3	2.1	4.6	1.6	1.9	1.3	1.1	0.1	87.3	2.1	10.6	0.077	0.509	20.756900	-101.337230
T. Der. Nuevo Libramiento	8.80	3	2	28744	0.0	85.1	2.9	5.6	2.2	2.0	0.7	1.0	0.5	85.1	2.9	12.0	0.075	0.509	20.756900	-101.337230
T. C. Guanajuato - Los Infantes	26.44	3	1	25758	0.0	76.3	4.4	7.9	2.9	5.1	1.5	1.4	0.5	76.3	4.4	19.3	0.066	0.548	20.892838	-101.358359
T. C. Guanajuato - Los Infantes	26.44	3	2	23872	0.0	74.7	4.6	8.5	2.5	5.5	2.9	0.9	0.4	74.7	4.6	20.7	0.076	0.548	20.892838	-101.358359
X. C. Santa Teresa - Silao	36.85	1	1	25106	0.0	78.1	4.1	5.6	3.0	4.7	2.5	1.3	0.7	78.1	4.1	17.8	0.068	0.522	20.940255	-101.414237
X. C. Santa Teresa - Silao	36.85	1	2	27392	0.0	75.5	4.7	6.3	3.6	4.8	2.9	1.9	0.3	75.5	4.7	19.8	0.067	0.522	20.940255	-101.414237
X. C. Santa Teresa - Silao	36.85	3	1	34579	0.0	81.3	3.1	5.0	3.3	4.6	1.6	0.8	0.3	81.3	3.1	15.6	0.061	0.521	20.950516	-101.414266
X. C. Santa Teresa - Silao	36.85	3	2	35016	0.0	73.6	4.2	6.5	4.7	5.5	2.4	2.5	0.6	73.6	4.2	22.2	0.062	0.521	20.950516	-101.414266
T. Der. Aeropuerto	57.77	3	1	35304	0.0	82.8	3.1	4.3	2.6	3.5	1.8	1.6	0.3	82.8	3.1	14.1	0.064	0.510	20.982779	-101.482245
T. Der. Aeropuerto	57.77	3	2	34069	0.0	80.3	3.9	5.6	2.7	3.8	1.7	1.6	0.4	80.3	3.9	15.8	0.062	0.510	20.982779	-101.482245
León	68.99	1	1	35515	0.0	78.4	4.2	6.9	2.6	3.4	2.3	1.5	0.7	78.4	4.2	17.4	0.059	0.538	21.059698	-101.582663
León	68.99	1	2	34320	0.0	83.2	2.7	4.8	2.6	3.0	1.1	2.0	0.6	83.2	2.7	14.1	0.059	0.538	21.059698	-101.582663

9 CARR: Irapuato - Zapotlanejo

CLAVE: 00114

RUTA: MEX-090

AÑO: 2015

LUGAR	ESTACION				CLASIFICACION VEHICULAR EN PORCIENTO												COORDENADAS			
	KM	TE	SC	TDPA	M	A	B	C2	C3	T3S2	T3S3	T3S2R4	OTROS	A	B	C	K'	D	LATITUD	LONGITUD
Irapuato	0.00																			
T. Izq. Querétaro - Irapuato (Cuota)	2.78	1	1	24851	3.3	84.6	0.7	7.1	0.9	1.4	1.3	0.2	0.5	87.9	0.7	11.4	0.069	0.549	20.654670	-101.369670
T. Izq. Querétaro - Irapuato (Cuota)	2.78	1	2	24691	3.3	84.0	0.7	7.4	0.9	1.6	1.4	0.2	0.5	87.3	0.7	12.0	0.071	0.549	20.654240	-101.369980
T. Izq. Querétaro - Irapuato (Cuota)	2.78	3	1	17027	0.0	71.5	2.7	11.1	5.0	5.5	2.2	1.7	0.3	71.5	2.7	25.8	0.075	0.504	20.643040	-101.379190
T. Izq. Querétaro - Irapuato (Cuota)	2.78	3	2	16772	0.0	75.4	2.5	9.2	3.6	5.3	3.2	0.7	0.1	75.4	2.5	22.1	0.071	0.504	20.643050	-101.379180
T. C. Libramiento Norponiente de Irapuato (Cuota)	11.00	3	1	14532	0.0	67.6	3.8	12.6	4.1	8.2	2.3	1.1	0.3	67.6	3.8	28.6	0.068	0.500	20.590020	-101.426120
T. C. Libramiento Norponiente de Irapuato (Cuota)	11.00	3	2	14526	0.0	65.9	3.5	13.6	4.3	8.5	2.3	1.6	0.3	65.9	3.5	30.6	0.065	0.500	20.590010	-101.426120
T. Der. Cuerámaro	15.00	3	1	14057	0.1	68.0	3.8	10.1	4.5	9.9	2.2	0.9	0.5	68.1	3.8	28.1	0.066	0.507	20.559390	-101.449580
T. Der. Cuerámaro	15.00	3	2	13140	0.0	66.8	2.6	11.0	5.7	9.9	2.4	1.4	0.2	66.8	2.6	30.6	0.069	0.507	20.559390	-101.449580
Abasolo	30.00	1	1	11793	0.7	65.8	3.6	8.7	4.0	10.7	2.6	2.9	1.0	66.5	3.6	29.9	0.062	0.517	20.472280	-101.502860
Abasolo	30.00	1	2	12538	1.2	63.2	4.1	9.1	4.2	10.9	3.0	3.2	1.1	64.4	4.1	31.5	0.067	0.517	20.472260	-101.502870
Abasolo	30.00	3	1	9995	1.4	61.1	4.4	7.8	5.2	12.6	3.1	3.5	0.9	62.5	4.4	33.1	0.062	0.504	20.450970	-101.555320
Abasolo	30.00	3	2	9962	1.6	57.0	5.0	8.3	5.8	14.0	3.4	3.9	1.0	58.6	5.0	36.4	0.064	0.504	20.450760	-101.555320
Pénjamo	50.65	1	1	11168	0.0	71.8	5.2	7.6	3.8	5.9	3.7	1.6	0.4	71.8	5.2	23.0	0.061	0.508	20.436880	-101.692970
Pénjamo	50.65	1	2	10834	0.1	72.9	4.6	8.8	4.0	4.5	3.4	1.1	0.6	73.0	4.6	22.4	0.062	0.508	20.436880	-101.692970
Pénjamo	50.65	3	1	11321	0.1	69.0	5.7	9.0	2.7	8.8	3.0	1.5	0.2	69.1	5.7	25.2	0.062	0.510	20.416410	-101.728590

GUANAJUATO

9 CARR: Irapuato - Zapotlanejo

CLAVE: 00114

RUTA: MEX-090

AÑO: 2015

LUGAR	ESTACION				CLASIFICACION VEHICULAR EN PORCIENTO														COORDENADAS	
	KM	TE	SC	TDPA	M	A	B	C2	C3	T3S2	T3S3	T3S2R4	OTROS	A	B	C	K'	D	LATITUD	LONGITUD
Pénjamo	50.65	3	2	11813	0.0	69.9	5.4	8.1	4.0	7.8	2.5	1.9	0.4	69.9	5.4	24.7	0.059	0.510	20.416410	-101.728590
T. Der. Manuel Doblado	83.87	1	0	14756	0.1	75.8	3.3	7.6	3.8	5.7	2.4	1.0	0.3	75.9	3.3	20.8	0.070	0.502	20.360140	-101.999900
Lim. Edos. Term. Gto. Ppia. Mich.	85.01																			
La Piedad	87.00	3	1	6384	2.1	74.5	2.0	11.3	2.4	5.6	1.1	0.4	0.6	76.6	2.0	21.4	0.087	0.507	20.358806	-102.068194
La Piedad	87.00	3	2	6200	2.5	70.2	2.3	13.3	2.8	6.5	1.3	0.4	0.7	72.7	2.3	25.0	0.089	0.507	20.358806	-102.068194
T. Izq. Yurécuaro	100.00	3	0	5750	1.4	76.1	2.6	10.1	2.5	5.4	1.3	0.3	0.3	77.5	2.6	19.9	0.072	0.512	20.376278	-102.115167
Lim. Edos. Term. Mich. Ppia. Jal.	102.10																			
Degollado	105.40	1	0	6113	3.0	73.6	2.6	10.6	2.4	5.9	1.1	0.3	0.5	76.6	2.6	20.8	0.075	0.501	20.430778	-102.129194
Ayotlán	134.00	1	0	6970	6.4	72.7	1.8	10.5	2.2	4.8	1.0	0.2	0.4	79.1	1.8	19.1	0.077	0.510	20.512028	-102.325778
Atotonilco El Alto	157.00	1	0	5204	1.6	73.7	2.4	11.4	3.1	5.7	1.3	0.3	0.5	75.3	2.4	22.3	0.071	0.502	20.565611	-102.452944
Atotonilco El Alto	157.00	3	1	7769	0.5	91.2	0.3	4.3	1.0	1.0	1.3	0.1	0.3	91.7	0.3	8.0	0.066	0.529	20.542583	-102.528639
Atotonilco El Alto	157.00	3	2	8740	2.9	88.1	0.3	4.7	1.1	1.0	1.5	0.1	0.3	91.0	0.3	8.7	0.061	0.529	20.542583	-102.528639
X. C. San Miguel El Alto - La Barca	158.60	3	0	10636	1.6	74.9	1.4	8.8	3.8	6.4	1.6	0.5	1.0	76.5	1.4	22.1	0.064	0.500	20.539806	-102.538139
T. Izq. Ocotlán	188.00	1	0	10131	2.5	73.1	1.6	9.6	4.3	6.1	1.6	0.3	0.9	75.6	1.6	22.8	0.071	0.501	20.548306	-102.777194
T. Der. Libramiento Zapotlanejo	215.80	1	0	9915	5.2	71.9	1.5	9.8	2.2	6.1	1.9	0.5	0.9	77.1	1.5	21.4	0.071	0.523	20.621861	-103.043750
T. Der. Libramiento Zapotlanejo	215.80	3	1	6873	22.3	69.0	0.1	6.4	0.1	1.1	0.7	0.1	0.2	91.3	0.1	8.6	0.076	0.524	20.622250	-103.056833
T. Der. Libramiento Zapotlanejo	215.80	3	2	6238	23.9	67.0	0.1	6.7	0.1	1.2	0.7	0.1	0.2	90.9	0.1	9.0	0.069	0.524	20.622250	-103.056833
Zapotlanejo	217.60																			

10 CARR: La Noria - Acámbaro

CLAVE: 00131

RUTA: MEX-120

AÑO: 2015

LUGAR	ESTACION				CLASIFICACION VEHICULAR EN PORCIENTO														COORDENADAS	
	KM	TE	SC	TDPA	M	A	B	C2	C3	T3S2	T3S3	T3S2R4	OTROS	A	B	C	K'	D	LATITUD	LONGITUD
La Noria	0.00	3	0	7207	0.1	90.1	2.0	3.9	1.2	1.8	0.6	0.2	0.1	90.2	2.0	7.8	0.084	0.510	20.438000	-100.074520
Amealco	34.66	1	0	4806	0.3	85.9	1.0	8.4	1.9	1.5	0.6	0.3	0.1	86.2	1.0	12.8	0.092	0.504	20.198750	-100.149890
Amealco	34.66	3	0	4826	0.2	89.7	1.4	5.0	1.9	1.0	0.5	0.2	0.1	89.9	1.4	8.7	0.109	0.504	20.187410	-100.152440
Lim. Edos. Term. Qro. Ppia. Mich.	39.15																			
Lim. Edos. Term. Mich. Ppia. Gto.	55.90																			
Coroneo	59.35	3	0	1904	0.5	86.9	2.2	6.7	1.7	1.0	0.5	0.4	0.1	87.4	2.2	10.4	0.076	0.511	20.195140	-100.373400
Jerécuaro	79.70	3	0	2404	2.1	82.4	1.7	10.5	0.7	1.4	1.0	0.1	0.1	84.5	1.7	13.8	0.099	0.503	20.148660	-100.548030
Acámbaro	111.12	1	0	7512	0.2	82.4	1.7	11.5	2.0	1.3	0.5	0.3	0.1	82.6	1.7	15.7	0.072	0.504	20.048160	-100.703890



GUANAJUATO

11 CARR : León - Aguascalientes

CLAVE: 00167

RUTA: MEX-045

AÑO : 2015

LUGAR	ESTACION				CLASIFICACION VEHICULAR EN PORCIENTO										COORDENADAS					
	KM	TE	SC	TDPA	M	A	B	C2	C3	T3S2	T3S3	T3S2R4	OTROS	A	B	C	K'	D	LATITUD	LONGITUD
León	0.00																			
T. Der. Libramiento de León	11.00	1	1	6695	0.1	91.8	0.5	5.4	1.1	0.4	0.2	0.2	0.3	91.9	0.5	7.6	0.103	0.501	21.170180	-101.732385
T. Der. Libramiento de León	11.00	1	2	6717	0.1	93.3	0.5	3.3	1.1	0.5	0.1	0.6	0.5	93.4	0.5	6.1	0.094	0.501	21.170180	-101.732385
T. Der. Libramiento de León	11.00	3	1	8146	0.2	85.3	1.0	5.5	1.5	2.9	1.7	1.5	0.4	85.5	1.0	13.5	0.072	0.501	21.174167	-101.736833
T. Der. Libramiento de León	11.00	3	2	8172	0.2	88.4	0.9	4.9	1.5	2.3	0.6	0.9	0.3	88.6	0.9	10.5	0.070	0.501	21.174167	-101.736833
T. Izq. Centro de León	12.00	3	0	16267	0.1	83.2	2.8	5.4	2.0	3.0	1.5	1.7	0.3	83.3	2.8	13.9	0.071	0.503	21.192726	-101.748600
Lim. Edos. Term. Gto. Ppia. Jal.	17.88																			
X. C. San Luis Potosí - Lagos de Moreno	44.18	1	1	8332	4.0	76.8	1.3	10.5	2.3	3.5	0.9	0.3	0.4	80.8	1.3	17.9	0.080	0.509	21.367389	-101.900472
X. C. San Luis Potosí - Lagos de Moreno	44.18	1	2	8044	4.6	74.6	1.3	11.7	2.6	3.5	1.0	0.3	0.4	79.2	1.3	19.5	0.080	0.509	21.367389	-101.900472
T. Izq. Libramiento Lagos de Moreno	48.70	1	0	8321	4.6	74.6	1.3	11.7	2.6	3.5	1.0	0.3	0.4	79.2	1.3	19.5	0.077	0.509	21.372000	-101.962222
T. Izq. Libramiento Lagos de Moreno	48.70	3	0	8112	5.9	67.5	1.9	10.9	3.5	7.2	2.0	0.5	0.6	73.4	1.9	24.7	0.066	0.506	21.373778	-101.963861
T. Der. El Destierro	80.80	1	0	5391	1.5	68.4	2.4	11.0	4.9	7.6	2.5	0.8	0.9	69.9	2.4	27.7	0.066	0.504	21.499806	-102.194806
Encarnación de Díaz	88.20	1	0	7504	1.3	73.6	1.5	11.2	4.3	5.9	1.6	0.4	0.2	74.9	1.5	23.6	0.069	0.503	21.500750	-102.201222
T. Izq. Libramiento de Encarnación de Díaz	89.18	1	1	1616	7.5	84.3	0.3	7.4	0.2	0.3	0.0	0.0	0.0	91.8	0.3	7.9	0.072	0.507	21.534889	-102.239694
T. Izq. Libramiento de Encarnación de Díaz	89.18	1	2	1572	6.6	84.9	0.3	7.9	0.1	0.2	0.0	0.0	0.0	91.5	0.3	8.2	0.075	0.507	21.534889	-102.239694
T. Izq. Libramiento de Encarnación de Díaz	89.18	3	0	10621	1.7	68.0	3.5	11.9	4.4	7.3	2.4	0.6	0.2	69.7	3.5	26.8	0.066	0.524	21.551111	-102.244028
Lim. Edos. Term. Jal. Ppia. Ags.	103.30																			
T. Izq. Aeropuerto de Aguascalientes	110.15	1	1	9935	0.6	65.6	4.8	7.3	3.4	9.8	2.8	4.8	0.9	66.2	4.8	29.0	0.073	0.506	21.712472	-102.278500
T. Izq. Aeropuerto de Aguascalientes	110.15	1	2	9715	1.0	61.7	5.2	8.7	3.6	10.0	3.3	5.5	1.0	62.7	5.2	32.1	0.068	0.506	21.712472	-102.278500
T. Izq. Aeropuerto de Aguascalientes	111.00	3	1	15881	0.6	74.8	2.8	5.7	3.4	6.7	2.4	2.7	0.9	75.4	2.8	21.8	0.073	0.502	21.728889	-102.276639
T. Izq. Aeropuerto de Aguascalientes	111.00	3	2	15733	0.5	72.0	3.2	6.6	3.6	7.6	2.5	3.1	0.9	72.5	3.2	24.3	0.064	0.502	21.728889	-102.276639
Libramiento Poniente de Aguascalientes	116.50	1	1	15872	0.6	76.7	3.7	6.4	2.4	5.1	1.9	2.5	0.7	77.3	3.7	19.0	0.084	0.502	21.765361	-102.277306
Libramiento Poniente de Aguascalientes	116.50	1	2	15990	0.3	74.7	4.3	6.6	2.7	5.7	2.1	2.8	0.8	75.0	4.3	20.7	0.088	0.502	21.765361	-102.277306
Libramiento Poniente de Aguascalientes	116.50	3	1	15379	0.5	77.3	2.7	6.2	2.8	5.5	2.0	2.4	0.6	77.8	2.7	19.5	0.082	0.502	21.774306	-102.278833
Libramiento Poniente de Aguascalientes	116.50	3	2	15261	0.7	74.7	3.0	6.9	3.2	6.0	2.2	2.7	0.6	75.4	3.0	21.6	0.076	0.502	21.774306	-102.278833
T. Der. Estación Arellano (Central)	118.40	3	1	16030	0.7	77.2	3.7	7.5	2.4	5.0	1.4	1.8	0.3	77.9	3.7	18.4	0.074	0.573	21.802333	-102.283389
T. Der. Estación Arellano (Lateral)	118.40	3	1	7217	3.0	80.2	1.2	8.6	1.6	3.0	0.8	1.0	0.6	83.2	1.2	15.6	0.105	0.573	21.802333	-102.283389
T. Der. Estación Arellano (Lateral)	118.40	3	2	1296	4.2	77.4	1.3	9.0	2.0	3.6	0.5	1.5	0.5	81.6	1.3	17.1	0.093	0.573	21.802333	-102.283389
T. Der. Estación Arellano (Central)	118.40	3	2	15998	1.3	74.4	3.9	8.5	2.5	5.5	1.6	2.0	0.3	75.7	3.9	20.4	0.096	0.573	21.802333	-102.283389
Aguascalientes	129.38	1	1	23498	1.4	81.1	3.2	5.8	2.0	3.6	0.9	1.6	0.4	82.5	3.2	14.3	0.097	0.514	21.823472	-102.287083
Aguascalientes	129.38	1	2	22218	1.8	78.4	3.5	6.9	2.2	4.1	0.9	1.8	0.4	80.2	3.5	16.3	0.104	0.514	21.823472	-102.287083

GUANAJUATO

12 CARR: Manuel Doblado - La Piedad

CLAVE: 11028

RUTA: MEX-084

AÑO: 2015

LUGAR	ESTACION				CLASIFICACION VEHICULAR EN PORCIENTO														COORDENADAS	
	KM	TE	SC	TDPA	M	A	B	C2	C3	T3S2	T3S3	T3S2R4	OTROS	A	B	C	K'	D	LATITUD	LONGITUD
Manuel Doblado	0.00	3	0	5450	0.2	89.4	1.3	5.2	1.6	1.4	0.4	0.3	0.2	89.6	1.3	9.1	0.094	0.510	20.720010	-101.942830
Lim. Edos. Term. Gto. Ppia. Jal.	11.00																			
Lim. Edos. Term. Jal. Ppia. Gto.	23.00																			
T. Der. San José de La Paz	29.00	1	0	2199	0.5	80.4	3.2	8.3	2.3	2.8	1.5	0.5	0.5	80.9	3.2	15.9	0.080	0.514	20.593080	-101.979030
T. Der. San José de La Paz	29.00	3	0	2131	0.5	78.6	2.8	9.1	2.6	4.2	1.5	0.5	0.2	79.1	2.8	18.1	0.080	0.505	20.580480	-101.976050
T. C. Irapuato - Guadalajara	45.00	1	0	6950	0.1	81.5	2.5	9.6	2.7	2.2	0.9	0.3	0.2	81.6	2.5	15.9	0.093	0.503	20.361180	-102.003050

13 CARR: Maravatío - Acámbaro

CLAVE: 00418

RUTA: MEX-061

AÑO: 2015

LUGAR	ESTACION				CLASIFICACION VEHICULAR EN PORCIENTO														COORDENADAS	
	KM	TE	SC	TDPA	M	A	B	C2	C3	T3S2	T3S3	T3S2R4	OTROS	A	B	C	K'	D	LATITUD	LONGITUD
Maravatío	0.00	3	0	7173	1.5	75.8	1.7	14.9	1.3	3.3	0.9	0.3	0.3	77.3	1.7	21.0	0.067	0.501	19.914557	-100.463296
Lim. Edos. Term. Mich. Ppia. Gto.	9.00																			
Tarandacuao	13.00	3	0	5311	0.2	85.6	3.1	7.7	1.2	1.1	0.7	0.3	0.1	85.8	3.1	11.1	0.077	0.510	20.015420	-100.541620
Acámbaro	39.00	1	0	8551	0.1	82.4	1.5	11.5	1.5	1.6	1.0	0.3	0.1	82.5	1.5	16.0	0.081	0.504	20.034870	-100.694020

14 CARR: Morelia - Salamanca

CLAVE: 00124

RUTA: MEX-043

AÑO: 2015

LUGAR	ESTACION				CLASIFICACION VEHICULAR EN PORCIENTO														COORDENADAS	
	KM	TE	SC	TDPA	M	A	B	C2	C3	T3S2	T3S3	T3S2R4	OTROS	A	B	C	K'	D	LATITUD	LONGITUD
Morelia	0.00																			
X. Periférico de Morelia	2.70	3	1	35109	1.4	85.8	1.5	5.9	1.3	2.0	0.9	0.8	0.4	87.2	1.5	11.3	0.066	0.502	19.744983	-101.174856
X. Periférico de Morelia	2.70	3	2	34794	1.2	84.3	1.7	6.8	1.5	2.2	0.9	1.0	0.4	85.5	1.7	12.8	0.076	0.502	19.744356	-101.174957
T. Der. Zinapécuaro	8.85	1	1	28920	1.3	84.3	1.9	6.8	1.4	2.0	0.9	1.0	0.4	85.6	1.9	12.5	0.068	0.505	19.763294	-101.163900
T. Der. Zinapécuaro	8.85	1	2	28300	1.2	82.8	2.3	7.4	1.5	2.3	1.1	1.0	0.4	84.0	2.3	13.7	0.068	0.505	19.763290	-101.163894
T. Der. Zinapécuaro	8.85	3	1	15870	1.0	79.4	3.2	7.8	2.7	2.9	1.0	1.8	0.2	80.4	3.2	16.4	0.078	0.505	19.772407	-101.157009
T. Der. Zinapécuaro	8.85	3	2	16191	1.0	77.7	3.5	8.6	2.8	3.2	1.0	2.0	0.2	78.7	3.5	17.8	0.090	0.505	19.772408	-101.157008
Cuitzeo	33.64	1	0	9549	0.5	74.9	3.1	11.0	2.6	4.9	1.6	0.7	0.7	75.4	3.1	21.5	0.072	0.521	19.956067	-101.136037
Cuitzeo	33.64	3	0	8407	0.7	75.5	2.9	10.2	2.9	5.2	1.6	0.5	0.5	76.2	2.9	20.9	0.071	0.505	19.985657	-101.147589
Lim. Edos. Term. Mich. Ppia. Gto.	46.10																			
T. Izq. Moroleón	52.36	1	1	8761	0.1	85.5	2.5	6.8	1.7	2.0	0.9	0.4	0.1	85.6	2.5	11.9	0.080	0.546	20.094040	-101.158620
T. Izq. Moroleón	52.36	1	2	8705	0.1	85.3	2.9	6.3	1.5	1.8	0.8	0.6	0.7	85.4	2.9	11.7	0.072	0.546	20.094040	-101.158620
Uriangato	54.22	3	1	6602	0.1	84.6	1.1	10.0	1.6	1.1	0.9	0.5	0.1	84.7	1.1	14.2	0.090	0.511	20.165680	-101.158550
Uriangato	54.22	3	2	6327	0.2	80.6	2.6	10.6	2.3	2.0	0.8	0.6	0.3	80.8	2.6	16.6	0.089	0.511	20.165680	-101.158550
T. Der. Yuriria	61.36	3	0	9638	0.1	86.5	1.4	7.4	1.7	1.7	0.7	0.4	0.1	86.6	1.4	12.0	0.072	0.508	20.200100	-101.156650

GUANAJUATO

14 CARR: Morelia - Salamanca

CLAVE: 00124

RUTA: MEX-043

AÑO: 2015

LUGAR	ESTACION				CLASIFICACION VEHICULAR EN PORCIENTO														COORDENADAS	
	KM	TE	SC	TDPA	M	A	B	C2	C3	T3S2	T3S3	T3S2R4	OTROS	A	B	C	K'	D	LATITUD	LONGITUD
Magdalena de Arceo	77.10	1	0	5900	0.3	84.6	2.5	5.9	1.6	3.1	1.2	0.6	0.2	84.9	2.5	12.6	0.073	0.515	20.299950	-101.181660
Magdalena de Arceo	77.10	3	0	5951	0.2	86.2	3.0	5.4	2.0	1.9	0.6	0.5	0.2	86.4	3.0	10.6	0.104	0.501	20.313160	-101.182400
T. Der. Jaral del Progreso	87.00	1	0	8743	0.2	80.3	3.6	9.3	2.4	2.1	1.1	0.8	0.2	80.5	3.6	15.9	0.075	0.502	20.360820	-101.189160
T. Der. Jaral del Progreso	87.00	3	0	8262	3.9	76.3	3.6	6.5	0.7	4.9	1.6	0.9	1.6	80.2	3.6	16.2	0.064	0.518	20.414000	-101.193090
X. C. Libramiento de Salamanca	105.10	1	0	24295	0.1	88.9	2.0	4.0	1.5	1.6	1.3	0.4	0.2	89.0	2.0	9.0	0.070	0.505	20.539222	-101.205278
Salamanca	107.95	1	1	14651	0.1	86.4	3.5	4.3	1.6	1.7	1.3	0.8	0.3	86.5	3.5	10.0	0.062	0.516	20.544583	-101.204361
Salamanca	107.95	1	2	13730	0.1	87.9	2.4	4.4	1.8	1.6	0.8	0.7	0.3	88.0	2.4	9.6	0.062	0.516	20.544583	-101.204361

15 CARR: Munguia - Las Adjuntas

CLAVE: 11815

RUTA: MEX-084

AÑO: 2015

LUGAR	ESTACION				CLASIFICACION VEHICULAR EN PORCIENTO														COORDENADAS	
	KM	TE	SC	TDPA	M	A	B	C2	C3	T3S2	T3S3	T3S2R4	OTROS	A	B	C	K'	D	LATITUD	LONGITUD
T. C. Irapuato - Guadalajara	0.00	3	0	5662	0.1	81.7	1.4	10.2	3.3	1.7	0.7	0.6	0.3	81.8	1.4	16.8	0.082	0.513	20.563780	-101.450901
T. Der. La Joya de Calvillo	15.00	1	0	5074	0.3	84.6	1.2	7.8	2.8	1.8	0.7	0.5	0.3	84.9	1.2	13.9	0.076	0.506	20.602170	-101.542210
Cuerámara	27.00	3	0	4160	0.2	87.9	1.7	5.3	2.2	1.7	0.6	0.2	0.2	88.1	1.7	10.2	0.071	0.501	20.644480	-101.681340
Saucillo	38.00	1	0	3240	0.5	83.5	2.5	7.9	1.9	2.1	0.8	0.5	0.3	84.0	2.5	13.5	0.073	0.518	20.689300	-101.706000
Saucillo	38.00	3	0	1348	1.2	81.2	3.3	7.2	2.7	2.7	1.0	0.5	0.2	82.4	3.3	14.3	0.074	0.521	20.693250	-101.723730
Las Adjuntas	57.00	1	0	1811	0.6	81.1	3.2	8.1	2.9	2.2	1.1	0.6	0.2	81.7	3.2	15.1	0.071	0.504	20.652330	-101.882300

16 CARR: Nuevo Libramiento de Irapuato

CLAVE: 11132

RUTA: MEX-045

AÑO: 2015

LUGAR	ESTACION				CLASIFICACION VEHICULAR EN PORCIENTO														COORDENADAS	
	KM	TE	SC	TDPA	M	A	B	C2	C3	T3S2	T3S3	T3S2R4	OTROS	A	B	C	K'	D	LATITUD	LONGITUD
T. C. Querétaro - Irapuato (Cuota)	0.00	3	1	17358	0.0	66.6	4.8	11.1	4.8	7.5	3.2	1.6	0.4	66.6	4.8	28.6	0.068	0.504	20.665480	-101.298520
T. C. Querétaro - Irapuato (Cuota)	0.00	3	2	17651	0.0	72.8	2.2	8.0	3.6	8.8	2.5	1.8	0.3	72.8	2.2	25.0	0.067	0.504	20.662300	-101.298190
T. C. Irapuato - León	11.20	1	1	17696	0.0	74.6	2.2	8.4	2.5	7.8	2.4	1.8	0.3	74.6	2.2	23.2	0.067	0.517	20.727655	-101.339614
T. C. Irapuato - León	11.20	1	2	18971	0.0	68.0	3.2	10.8	3.4	8.4	3.4	2.5	0.3	68.0	3.2	28.8	0.068	0.517	20.727655	-101.339614

17 CARR: Querétaro - Irapuato (Libre)

CLAVE: 00154

RUTA: MEX-045

AÑO: 2015

LUGAR	ESTACION				CLASIFICACION VEHICULAR EN PORCIENTO														COORDENADAS	
	KM	TE	SC	TDPA	M	A	B	C2	C3	T3S2	T3S3	T3S2R4	OTROS	A	B	C	K'	D	LATITUD	LONGITUD
Querétaro Poniente	0.00	3	1	45851	0.0	90.7	1.3	3.1	1.7	1.5	0.7	0.7	0.3	90.7	1.3	8.0	0.057	0.505	20.553806	-100.421528
Querétaro Poniente	0.00	3	2	46820	0.0	91.1	1.1	3.8	1.2	1.7	0.7	0.3	0.1	91.1	1.1	7.8	0.063	0.505	20.553806	-100.421528
T. Der. Villa del Pueblito	6.67	3	1	17347	0.8	76.8	3.3	7.4	2.8	5.1	1.9	1.0	0.9	77.6	3.3	19.1	0.070	0.501	20.533111	-100.447167

GUANAJUATO

17 CARR: Querétaro - Irapuato (Libre)

CLAVE: 00154

RUTA: MEX-045

AÑO: 2015

LUGAR	ESTACION				CLASIFICACION VEHICULAR EN PORCIENTO														COORDENADAS	
	KM	TE	SC	TDPA	M	A	B	C2	C3	T3S2	T3S3	T3S2R4	OTROS	A	B	C	K'	D	LATITUD	LONGITUD
T. Der. Villa del Pueblito	6.67	3	2	17587	1.1	74.5	3.8	7.9	3.1	5.5	2.0	1.1	1.0	75.6	3.8	20.6	0.074	0.501	20.533111	-100.447167
Los Ángeles	12.60	3	1	18008	0.0	84.4	2.2	3.5	1.4	5.5	1.7	1.0	0.3	84.4	2.2	13.4	0.064	0.522	20.533556	-100.501528
Los Ángeles	12.60	3	2	19676	0.0	81.2	2.2	4.8	1.9	6.1	2.3	1.2	0.3	81.2	2.2	16.6	0.057	0.522	20.533556	-100.501528
Lim. Edos. Term. Qro. Ppia. Gto.	13.49																			
T. Izq. Apaseo El Alto	28.37	3	1	17773	0.0	74.7	2.5	7.9	2.3	6.1	3.8	1.8	0.9	74.7	2.5	22.8	0.067	0.508	20.470000	-100.638500
T. Izq. Apaseo El Alto	28.37	3	2	17229	0.0	75.7	2.5	8.0	2.5	6.6	3.0	1.4	0.3	75.7	2.5	21.8	0.069	0.508	20.470000	-100.638500
T. Der. Apaseo El Grande	40.11	3	1	17719	0.0	76.6	2.9	6.9	2.6	6.2	2.5	1.9	0.4	76.6	2.9	20.5	0.069	0.514	20.535472	-100.704944
T. Der. Apaseo El Grande	40.11	3	2	18744	0.0	77.2	2.8	5.6	2.2	7.1	2.2	2.4	0.5	77.2	2.8	20.0	0.071	0.514	20.535472	-100.704944
T. Izq. Libramiento de Celaya Ote.	49.90	1	1	18106	0.0	73.1	4.4	7.6	3.0	6.9	3.0	1.7	0.3	73.1	4.4	22.5	0.066	0.523	20.519889	-100.754139
T. Izq. Libramiento de Celaya Ote.	49.90	1	2	19882	0.0	72.3	4.3	6.9	3.2	6.9	3.8	2.2	0.4	72.3	4.3	23.4	0.069	0.523	20.519889	-100.754139
T. Izq. Libramiento de Celaya Pte.	55.61	3	1	25515	0.0	83.7	2.6	4.1	1.7	4.1	2.1	1.5	0.2	83.7	2.6	13.7	0.071	0.528	20.516639	-100.879694
T. Izq. Libramiento de Celaya Pte.	55.61	3	2	22799	0.0	82.1	2.8	5.2	2.5	4.5	1.3	1.4	0.2	82.1	2.8	15.1	0.071	0.528	20.516639	-100.879694
T. Izq. Cortazar	67.50	3	1	22750	0.0	80.9	2.7	5.6	2.8	4.4	1.9	1.3	0.4	80.9	2.7	16.4	0.063	0.505	20.510028	-100.968278
T. Izq. Cortazar	67.50	3	2	22322	0.0	79.1	3.0	6.6	3.2	5.0	1.5	1.1	0.5	79.1	3.0	17.9	0.062	0.505	20.510028	-100.968278
T. Izq. Libramiento de Salamanca	93.80	1	1	19323	0.0	73.8	3.5	9.6	4.1	5.1	2.7	0.6	0.6	73.8	3.5	22.7	0.074	0.502	20.556028	-101.159028
T. Izq. Libramiento de Salamanca	93.80	1	2	19182	0.0	73.3	4.8	9.5	2.6	5.6	2.5	1.4	0.3	73.3	4.8	21.9	0.067	0.502	20.556028	-101.159028
Irapuato	113.70	1	1	15306	0.1	86.3	2.8	6.2	2.2	1.1	0.5	0.5	0.3	86.4	2.8	10.8	0.069	0.520	20.662890	-101.317400
Irapuato	113.70	1	2	14111	0.1	88.8	1.9	6.0	1.4	0.6	0.2	0.8	0.2	88.9	1.9	9.2	0.066	0.520	20.662890	-101.317400

18 CARR: Querétaro - San Luis Potosí

CLAVE: 00165

RUTA: MEX-057

AÑO: 2015

LUGAR	ESTACION				CLASIFICACION VEHICULAR EN PORCIENTO														COORDENADAS	
	KM	TE	SC	TDPA	M	A	B	C2	C3	T3S2	T3S3	T3S2R4	OTROS	A	B	C	K'	D	LATITUD	LONGITUD
Querétaro	0.00																			
T. Der. Libramiento de Querétaro	6.28	3	1	45143	0.0	88.6	1.3	4.8	1.7	1.5	0.6	0.6	0.9	88.6	1.3	10.1	0.065	0.513	20.634840	-100.427620
T. Der. Libramiento de Querétaro	6.28	3	2	47505	0.0	89.5	1.3	4.5	1.4	1.7	0.8	0.6	0.2	89.5	1.3	9.2	0.064	0.513	20.634840	-100.427620
T. Izq. Juriquilla	15.63	3	1	31486	0.6	82.5	1.9	10.0	1.5	2.4	0.7	0.3	0.1	83.1	1.9	15.0	0.097	0.513	20.697060	-100.436520
T. Izq. Juriquilla	15.63	3	2	31944	0.4	86.1	0.2	3.1	1.0	4.0	3.0	0.6	1.6	86.5	0.2	13.3	0.071	0.513	20.697060	-100.436520
T. Izq. San Miguel de Allende	28.53	1	1	22612	0.0	84.4	2.1	5.3	1.5	4.6	1.1	0.8	0.2	84.4	2.1	13.5	0.102	0.509	20.809430	-100.448870
T. Izq. San Miguel de Allende	28.53	1	2	23437	0.0	83.7	1.7	5.8	2.1	4.2	1.3	1.0	0.2	83.7	1.7	14.6	0.084	0.509	20.809430	-100.448870
T. Izq. San Miguel de Allende	28.53	3	1	17142	0.0	73.8	1.9	6.1	2.5	10.8	2.9	1.6	0.4	73.8	1.9	24.3	0.064	0.508	20.837070	-100.439290
T. Izq. San Miguel de Allende	28.53	3	2	16572	0.0	70.7	2.1	5.7	2.9	11.8	4.5	1.9	0.4	70.7	2.1	27.2	0.075	0.508	20.836770	-100.439510
Lim. Edos. Term. Qro. Ppia. Gto.	36.70																			
X. C. San José Iturbide - El Arenal	46.83	1	1	16092	0.0	72.5	2.2	6.5	2.8	10.0	4.1	1.5	0.4	72.5	2.2	25.3	0.064	0.503	20.968290	-100.429080
X. C. San José Iturbide - El Arenal	46.83	1	2	16263	0.0	71.2	2.0	6.3	1.4	13.2	4.4	1.1	0.4	71.2	2.0	26.8	0.075	0.503	20.968290	-100.429080

GUANAJUATO

18 CARR: Querétaro - San Luis Potosí

CLAVE: 00165

RUTA: MEX-057

AÑO: 2015

LUGAR	ESTACION				CLASIFICACION VEHICULAR EN PORCIENTO														COORDENADAS	
	KM	TE	SC	TDPA	M	A	B	C2	C3	T3S2	T3S3	T3S2R4	OTROS	A	B	C	K'	D	LATITUD	LONGITUD
X. C. Ent. San Miguel de Allende - Dr. Mora	61.93	1	1	13718	0.0	69.0	4.4	6.1	2.1	10.5	4.7	2.8	0.4	69.0	4.4	26.6	0.065	0.506	21.077270	-100.512430
X. C. Ent. San Miguel de Allende - Dr. Mora	61.93	1	2	13410	0.0	65.9	4.9	7.6	2.9	10.8	4.6	3.0	0.3	65.9	4.9	29.2	0.059	0.506	21.077270	-100.512430
X. C. San Luis de La Paz - Guanajuato	86.68	1	1	12957	0.0	75.3	3.1	5.8	2.1	9.5	3.4	0.1	0.7	75.3	3.1	21.6	0.061	0.506	21.281511	-100.591650
X. C. San Luis de La Paz - Guanajuato	86.68	1	2	13255	0.0	73.4	3.5	5.0	2.9	11.2	3.2	0.1	0.7	73.4	3.5	23.1	0.075	0.506	21.281511	-100.591650
T. Izq. San Diego de La Unión	119.07	3	1	9703	0.0	78.8	2.0	5.0	2.5	8.0	3.1	0.1	0.5	78.8	2.0	19.2	0.070	0.543	21.538815	-100.746040
T. Izq. San Diego de La Unión	119.07	3	2	11517	0.0	78.7	2.1	4.7	2.6	8.4	3.0	0.1	0.4	78.7	2.1	19.2	0.061	0.543	21.538815	-100.746040
Lim. Edos. Term. Gto. Ppia. S. L. P.	124.74																			
T. Izq. Santa María del Río	155.88	3	1	10952	2.0	57.3	4.9	7.4	2.9	15.9	5.1	3.6	0.9	59.3	4.9	35.8	0.065	0.518	21.823296	-100.728017
T. Izq. Santa María del Río	155.88	3	2	11783	1.3	53.2	5.3	8.1	3.2	17.7	5.9	4.3	1.0	54.5	5.3	40.2	0.067	0.518	21.820788	-100.729582
T. Izq. Villa de Reyes	176.35	1	1	13101	1.1	47.4	5.8	9.9	3.2	24.3	3.1	4.7	0.5	48.5	5.8	45.7	0.063	0.505	21.958688	-100.810222
T. Izq. Villa de Reyes	176.35	1	2	13351	0.6	41.2	6.5	11.5	3.4	27.4	3.6	5.3	0.5	41.8	6.5	51.7	0.066	0.505	21.960237	-100.811376
T. Izq. Villa de Reyes	176.35	3	1	19005	1.0	53.5	4.0	10.9	3.1	20.9	2.6	3.4	0.6	54.5	4.0	41.5	0.069	0.504	21.973784	-100.818405
T. Izq. Villa de Reyes	176.35	3	2	19332	0.7	49.8	4.3	11.7	3.6	22.8	2.9	3.6	0.6	50.5	4.3	45.2	0.076	0.504	21.973796	-100.818412
X. C. Libramiento de San Luis Potosí	184.80	1	1	23095	1.8	65.2	3.0	9.4	3.3	11.7	2.2	2.6	0.8	67.0	3.0	30.0	0.086	0.528	22.030440	-100.849469
X. C. Libramiento de San Luis Potosí	184.80	1	2	25855	1.0	62.8	3.1	10.4	3.5	12.8	2.6	3.0	0.8	63.8	3.1	33.1	0.088	0.528	22.030446	-100.849466
X. Periférico de San Luis Potosí (Lateral)	197.50	1	1	14512	4.5	68.0	2.2	12.0	3.3	4.9	2.5	1.3	1.3	72.5	2.2	25.3	0.110	0.516	22.121194	-100.912816
X. Periférico de San Luis Potosí (Central)	197.50	1	1	33049	1.1	87.0	0.9	2.6	0.8	2.2	3.8	1.1	0.5	88.1	0.9	11.0	0.065	0.514	22.121194	-100.912816
X. Periférico de San Luis Potosí (Central)	197.50	1	2	34993	1.3	85.6	1.0	2.9	0.9	2.4	4.2	1.1	0.6	86.9	1.0	12.1	0.063	0.514	22.121190	-100.912816
X. Periférico de San Luis Potosí (Lateral)	197.50	1	2	13592	5.6	64.0	2.5	13.7	3.3	5.2	2.7	1.5	1.5	69.6	2.5	27.9	0.093	0.516	22.121190	-100.912816
San Luis Potosí	201.66																			

19 CARR: Ramal a Las Adjuntas

CLAVE: 11820

RUTA: MEX-084

AÑO: 2015

LUGAR	ESTACION				CLASIFICACION VEHICULAR EN PORCIENTO														COORDENADAS	
	KM	TE	SC	TDPA	M	A	B	C2	C3	T3S2	T3S3	T3S2R4	OTROS	A	B	C	K'	D	LATITUD	LONGITUD
T. C. Manuel Doblado - La Piedad	0.00	3	0	2720	0.2	87.4	1.4	8.4	1.6	0.6	0.3	0.1	0.0	87.6	1.4	11.0	0.087	0.503	20.704630	-101.927110
Ent. Las Adjuntas	10.00	1	0	1624	0.2	87.9	2.9	5.4	2.1	1.1	0.3	0.1	0.0	88.1	2.9	9.0	0.129	0.508	20.656540	-101.885620

20 CARR: Ramal a San José Iturbide

CLAVE: 11201

RUTA: MEX-057

AÑO: 2015

LUGAR	ESTACION				CLASIFICACION VEHICULAR EN PORCIENTO														COORDENADAS	
	KM	TE	SC	TDPA	M	A	B	C2	C3	T3S2	T3S3	T3S2R4	OTROS	A	B	C	K'	D	LATITUD	LONGITUD
T. C. Querétaro - San Luis Potosí	0.00	3	1	7865	0.2	86.5	0.7	7.2	1.9	2.1	0.7	0.5	0.2	86.7	0.7	12.6	0.071	0.504	20.975660	-100.427360
T. C. Querétaro - San Luis Potosí	0.00	3	2	7990	0.1	88.9	0.7	5.0	1.5	2.6	0.4	0.7	0.1	89.0	0.7	10.3	0.078	0.504	20.975850	-100.427230
San José Iturbide	6.00	1	1	10664	0.1	90.2	0.6	5.2	1.4	1.4	0.3	0.3	0.5	90.3	0.6	9.1	0.082	0.505	20.988460	-100.400790

GUANAJUATO

20 CARR: Ramal a San José Iturbide

CLAVE: 11201

RUTA: MEX-057

AÑO: 2015

LUGAR	ESTACION				CLASIFICACION VEHICULAR EN PORCIENTO														COORDENADAS	
	KM	TE	SC	TDPA	M	A	B	C2	C3	T3S2	T3S3	T3S2R4	OTROS	A	B	C	K'	D	LATITUD	LONGITUD
San José Iturbide	6.00	1	2	10462	0.1	89.3	0.8	3.8	1.9	2.0	0.9	1.0	0.2	89.4	0.8	9.8	0.080	0.505	20.988460	-100.400790

21 CARR: Salvatierra - Ent. Yuriria

CLAVE: 11013

RUTA: MEX-043

AÑO: 2015

LUGAR	ESTACION				CLASIFICACION VEHICULAR EN PORCIENTO														COORDENADAS	
	KM	TE	SC	TDPA	M	A	B	C2	C3	T3S2	T3S3	T3S2R4	OTROS	A	B	C	K'	D	LATITUD	LONGITUD
T. C. Acámbaro - Celaya	0.00	3	0	14614	0.2	86.8	2.8	4.2	1.5	2.5	1.2	0.5	0.3	87.0	2.8	10.2	0.071	0.507	20.218990	-100.897550
T. Izq. Santiago Maravatío	8.00	1	0	9197	0.2	84.4	3.1	6.3	2.0	2.3	0.8	0.7	0.2	84.6	3.1	12.3	0.096	0.511	20.229970	-100.947950
Yuriria	27.00	1	0	8470	0.2	83.0	3.1	6.4	2.7	2.5	1.1	0.7	0.3	83.2	3.1	13.7	0.079	0.522	20.221450	-101.107860
T. C. Morelia - Salamanca	30.00	1	1	5394	0.2	89.4	1.6	5.9	1.5	0.8	0.2	0.3	0.1	89.6	1.6	8.8	0.075	0.501	20.200800	-101.149220
T. C. Morelia - Salamanca	30.00	1	2	5423	0.2	91.0	1.4	5.2	1.1	0.6	0.2	0.2	0.1	91.2	1.4	7.4	0.085	0.501	20.200800	-101.149220

22 CARR: San Luis de La Paz - Cañada de Moreno

CLAVE: 11134

RUTA: MEX-110

AÑO: 2015

LUGAR	ESTACION				CLASIFICACION VEHICULAR EN PORCIENTO														COORDENADAS	
	KM	TE	SC	TDPA	M	A	B	C2	C3	T3S2	T3S3	T3S2R4	OTROS	A	B	C	K'	D	LATITUD	LONGITUD
San Luis de La Paz	0.00	3	0	3951	3.1	58.9	16.1	15.7	1.1	2.2	1.1	0.6	1.2	62.0	16.1	21.9	0.073	0.505	21.294510	-100.487240
Cañada de Moreno	18.80																			

23 CARR: San Luis de La Paz - Guanajuato

CLAVE: 11108

RUTA: MEX-110

AÑO: 2015

LUGAR	ESTACION				CLASIFICACION VEHICULAR EN PORCIENTO														COORDENADAS	
	KM	TE	SC	TDPA	M	A	B	C2	C3	T3S2	T3S3	T3S2R4	OTROS	A	B	C	K'	D	LATITUD	LONGITUD
San Luis de La Paz	0.00																			
T. Izq. San José Iturbide	1.74	3	1	5944	0.0	88.5	3.1	5.0	1.8	1.0	0.4	0.1	0.1	88.5	3.1	8.4	0.082	0.500	21.294363	-100.534100
T. Izq. San José Iturbide	1.74	3	2	5953	0.0	88.5	3.1	5.1	1.7	1.0	0.4	0.1	0.1	88.5	3.1	8.4	0.071	0.500	21.294363	-100.534100
X. C. Querétaro - San Luis Potosí	8.31	3	0	6049	0.0	89.0	3.0	5.0	1.6	1.0	0.3	0.0	0.1	89.0	3.0	8.0	0.078	0.505	21.287274	-100.601640
T. Der. San Diego de La Unión	39.45	1	0	6107	0.0	90.4	2.0	5.3	1.2	0.7	0.3	0.0	0.1	90.4	2.0	7.6	0.083	0.503	21.196948	-100.863650
T. Izq. San Miguel de Allende	42.92	1	0	9222	0.0	89.6	2.4	4.9	1.5	1.1	0.4	0.0	0.1	89.6	2.4	8.0	0.064	0.505	21.177520	-100.882550
T. Der. Libramiento de Dolores Hidalgo (1º Acceso)	47.00	1	0	13028	0.0	89.2	2.4	4.7	1.5	1.6	0.4	0.1	0.1	89.2	2.4	8.4	0.068	0.505	21.170505	-100.897291
Dolores Hidalgo	48.40	3	0	3732	0.0	91.2	1.7	5.0	1.5	0.4	0.2	0.0	0.0	91.2	1.7	7.1	0.079	0.512	21.159378	-100.966930
T. Der. Ojo de Agua	61.29	1	0	2825	0.0	90.6	2.0	4.9	1.8	0.6	0.1	0.0	0.0	90.6	2.0	7.4	0.077	0.509	21.171163	-101.029330
Ojo de Agua de Calvillo	70.80	1	0	2143	0.0	90.7	2.1	4.8	1.8	0.4	0.1	0.0	0.1	90.7	2.1	7.2	0.087	0.521	21.117306	-101.123681
Santa Rosa	90.40	1	0	1853	0.4	89.6	2.6	5.0	1.6	0.6	0.2	0.0	0.0	90.0	2.6	7.4	0.099	0.502	21.077190	-101.194110
Guanajuato	103.29	1	0	2863	0.4	87.3	2.4	7.4	1.7	0.6	0.2	0.0	0.0	87.7	2.4	9.9	0.100	0.505	21.048090	-101.256790

GUANAJUATO

24 CARR : León - Aguascalientes (Cuota)

CLAVE: 00013

RUTA: MEX-045D

AÑO: 2015

LUGAR	ESTACION				CLASIFICACION VEHICULAR EN PORCIENTO										COORDENADAS					
	KM	TE	SC	TDPA	M	A	B	C2	C3	T3S2	T3S3	T3S2R4	OTROS	A	B	C	K'	D	LATITUD	LONGITUD
T. C. Irapuato - León	0.00	3	1	7439	0.1	69.7	5.0	10.0	3.2	6.6	2.9	2.0	0.5	69.8	5.0	25.2	0.086	0.509	21.052690	-101.581828
T. C. Irapuato - León	0.00	3	2	7176	0.1	73.5	4.5	9.0	3.1	5.1	1.2	2.0	1.5	73.6	4.5	21.9	0.078	0.509	21.052690	-101.581828
X. C. León - Manuel Doblado	19.00	1	1	6663	0.1	74.1	4.2	6.2	2.6	7.0	3.1	2.0	0.7	74.2	4.2	21.6	0.076	0.541	21.080777	-101.742955
X. C. León - Manuel Doblado	19.00	1	2	6859	0.1	74.2	4.0	6.2	2.9	6.6	3.5	1.7	0.8	74.3	4.0	21.7	0.069	0.541	21.080777	-101.742955
X. C. León - Manuel Doblado	19.00	3	1	5960	0.1	70.1	4.9	7.9	3.3	7.3	3.3	2.6	0.5	70.2	4.9	24.9	0.072	0.509	21.084049	-101.752092
X. C. León - Manuel Doblado	19.00	3	2	5739	0.0	75.2	4.1	7.5	2.9	6.3	2.8	1.1	0.1	75.2	4.1	20.7	0.080	0.509	21.084049	-101.752092
Caseta de Cobro León	23.50	2	1	5890	0.2	54.7	5.9	5.7	5.6	16.0	2.1	8.2	1.6	54.9	5.9	39.2	0.101	0.500	21.102765	-101.784575
Caseta de Cobro León	23.50	2	2	5890	0.2	54.7	5.9	5.7	5.6	16.0	2.1	8.2	1.6	54.9	5.9	39.2	0.101	0.500	21.102765	-101.784575
Lim. Edos. Term. Gto. Ppia. Jal.	28.50																			
X. C. Lagos de Moreno - Guadalajara	59.84	1	1	5508	1.5	54.2	7.3	6.6	5.0	14.3	1.9	8.3	0.9	55.7	7.3	37.0	0.076	0.501	21.311472	-102.033028
X. C. Lagos de Moreno - Guadalajara	59.84	1	2	5487	0.6	49.9	8.5	7.2	5.1	16.2	2.1	9.3	1.1	50.5	8.5	41.0	0.075	0.501	21.311472	-102.033028
X. C. Lagos de Moreno - Guadalajara	59.84	3	1	3356	0.8	52.6	8.5	8.0	3.1	13.4	2.1	10.2	1.3	53.4	8.5	38.1	0.064	0.501	21.317861	-102.050000
X. C. Lagos de Moreno - Guadalajara	59.84	3	2	3375	0.8	46.3	9.3	9.1	3.6	15.1	2.5	11.7	1.6	47.1	9.3	43.6	0.066	0.501	21.317861	-102.050000
Caseta de Cobro Encarnación	88.84	2	1	4653	0.2	53.6	7.5	5.1	3.9	14.2	2.5	11.4	1.6	53.8	7.5	38.7	0.101	0.500	21.489695	-102.243245
Caseta de Cobro Encarnación	88.84	2	2	4653	0.2	53.6	7.5	5.1	3.9	14.2	2.5	11.4	1.6	53.8	7.5	38.7	0.101	0.500	21.489695	-102.243245
T. C. León - Aguascalientes (Libre)	103.70	1	1	5151	0.9	54.0	8.3	6.6	4.2	12.2	3.0	9.3	1.5	54.9	8.3	36.8	0.074	0.516	21.616556	-102.276167
T. C. León - Aguascalientes (Libre)	103.70	1	2	5496	1.1	48.5	9.1	7.0	4.8	14.1	3.3	10.4	1.7	49.6	9.1	41.3	0.072	0.516	21.616833	-102.276306

25 CARR : Libramiento Norponiente de Irapuato (Cuota)

CLAVE: 11014

RUTA: MEX-IRA 020D

AÑO: 2015

LUGAR	ESTACION				CLASIFICACION VEHICULAR EN PORCIENTO										COORDENADAS					
	KM	TE	SC	TDPA	M	A	B	C2	C3	T3S2	T3S3	T3S2R4	OTROS	A	B	C	K'	D	LATITUD	LONGITUD
T. C. Irapuato - León	0.00	3	0	1441	2.6	78.1	0.9	7.0	4.2	3.8	1.7	1.5	0.2	80.7	0.9	18.4	0.087	0.505	20.753690	-101.347770
Caseta de Cobro Arandas	5.11	2	0	803	0.4	80.5	1.2	3.7	3.8	6.2	1.5	2.1	0.6	80.9	1.2	17.9	0.097	0.500	20.737494	-101.380005
Caseta de Cobro Yostiro	27.16	2	0	956	1.1	81.3	1.0	4.0	3.7	5.4	1.4	1.7	0.4	82.4	1.0	16.6	0.097	0.500	20.601090	-101.438523
T. C. Irapuato - Zapotlanejo	29.00	1	0	947	0.6	85.4	0.8	5.9	1.1	4.6	1.1	0.3	0.2	86.0	0.8	13.2	0.117	0.531	20.597620	-101.434390

26 CARR : Libramiento Norte de la Piedad (Cuota)

CLAVE:

RUTA: MEX-110D

AÑO: 2015

LUGAR	ESTACION				CLASIFICACION VEHICULAR EN PORCIENTO										COORDENADAS					
	KM	TE	SC	TDPA	M	A	B	C2	C3	T3S2	T3S3	T3S2R4	OTROS	A	B	C	K'	D	LATITUD	LONGITUD
T. C. Irapuato - Zapotlanejo	76.50	3	1	2607	4.8	42.0	6.8	6.9	6.7	19.9	4.3	7.7	0.9	46.8	6.8	46.4	0.072	0.508	20.390667	-101.961639
T. C. Irapuato - Zapotlanejo	76.50	3	2	2691	0.6	40.3	7.7	7.1	7.3	21.8	5.0	9.0	1.2	40.9	7.7	51.4	0.062	0.508	20.390667	-101.961639
Caseta de Cobro La Calera	81.20	2	1	2721	0.2	68.9	1.5	4.3	7.6	10.2	2.9	3.3	1.1	69.1	1.5	29.4	0.101	0.500	20.395656	-101.993458
Caseta de Cobro La Calera	81.20	2	2	2721	0.2	68.9	1.5	4.3	7.6	10.2	2.9	3.3	1.1	69.1	1.5	29.4	0.101	0.500	20.395656	-101.993458

GUANAJUATO

26 CARR: Libramiento Norte de la Piedad (Cuota)

CLAVE:

RUTA: MEX-110D

AÑO: 2015

LUGAR	ESTACION				CLASIFICACION VEHICULAR EN PORCIENTO														COORDENADAS	
	KM	TE	SC	TDPA	M	A	B	C2	C3	T3S2	T3S3	T3S2R4	OTROS	A	B	C	K'	D	LATITUD	LONGITUD
X. C. Manuel Doblado - La Piedad	81.86	3	1	2589	0.3	39.9	7.0	7.4	6.1	23.5	5.6	9.4	0.8	40.2	7.0	52.8	0.078	0.508	20.400472	-102.012194
X. C. Manuel Doblado - La Piedad	81.86	3	2	2673	0.5	34.1	7.9	8.5	7.4	25.0	5.9	9.7	1.0	34.6	7.9	57.5	0.071	0.508	20.400472	-102.012194
Lim. de Edos. Term. Gto./Ppia. Jal.	91.00																			
Lim. de Edos. Term. Jal./Ppia. Mich.	95.29																			
T. C. Patti - Sahuayo	96.70	1	1	2475	0.9	41.5	8.3	7.8	5.0	21.9	5.1	8.5	1.0	42.4	8.3	49.3	0.071	0.508	20.377083	-102.122722
T. C. Patti - Sahuayo	96.70	1	2	2554	0.9	34.4	9.4	8.6	6.1	23.3	6.0	10.2	1.1	35.3	9.4	55.3	0.074	0.508	20.377083	-102.122722

27 CARR: Morelia - Salamanca (Cuota)

CLAVE: 00124

RUTA: MEX-043D

AÑO: 2015

LUGAR	ESTACION				CLASIFICACION VEHICULAR EN PORCIENTO														COORDENADAS	
	KM	TE	SC	TDPA	M	A	B	C2	C3	T3S2	T3S3	T3S2R4	OTROS	A	B	C	K'	D	LATITUD	LONGITUD
T. C. Morelia - Salamanca (Libre)	0.00	3	0	6730	0.4	76.3	4.0	7.8	1.2	4.5	1.1	4.2	0.5	76.7	4.0	19.3	0.111	0.502	19.916831	-101.149945
T. Der. Cuitzeo	6.70	1	0	7345	0.3	80.1	3.6	4.9	1.1	4.5	1.0	4.1	0.4	80.4	3.6	16.0	0.100	0.505	19.965118	-101.160359
T. Der. Cuitzeo	6.70	3	0	5864	0.3	75.3	4.8	5.0	1.6	5.7	1.3	5.6	0.4	75.6	4.8	19.6	0.089	0.511	19.979578	-101.154538
Lim. Edos. Term. Mich. Ppia. Gto.	17.85																			
T. Izq. La Cinta	19.30	1	0	5587	0.4	71.9	3.6	7.0	1.7	6.3	1.8	6.2	1.1	72.3	3.6	24.1	0.076	0.530	20.069971	-101.136494
T. Izq. La Cinta	19.30	3	0	3865	0.3	72.9	4.0	5.4	1.5	6.4	1.8	6.8	0.9	73.2	4.0	22.8	0.083	0.529	20.083955	-101.136702
T. Der. Yuriria	31.40	1	0	3788	0.8	66.9	4.1	10.9	1.5	5.9	2.1	6.7	1.1	67.7	4.1	28.2	0.087	0.536	20.178486	-101.155103
T. Der. Yuriria	31.40	3	0	5016	0.3	75.4	4.0	6.8	1.3	5.1	1.5	5.0	0.6	75.7	4.0	20.3	0.088	0.500	20.186216	-101.166174
T. Izq. Valle de Santiago	57.12	1	0	6831	0.3	87.5	1.1	3.5	1.3	3.5	1.4	1.0	0.4	87.8	1.1	11.1	0.097	0.513	20.369140	-101.148190
T. Izq. Valle de Santiago	57.12	3	0	4753	0.3	86.5	2.7	4.9	1.4	2.2	0.9	0.8	0.3	86.8	2.7	10.5	0.125	0.525	20.381060	-101.147450
Caseta de Cobro Valtierra	76.39	2	0	4443	0.3	78.1	4.8	2.0	1.5	5.1	1.4	6.0	0.8	78.4	4.8	16.8	0.079	0.500	20.542730	-101.137815
T. C. Querétaro - Irapuato ( Libre)	77.09	1	0	4700	0.4	80.3	3.9	6.9	1.7	3.9	1.4	1.3	0.2	80.7	3.9	15.4	0.078	0.502	20.539139	-101.138278
T. C. Querétaro - Irapuato ( Cuota)	81.94	1	0	4600	0.4	79.3	4.8	5.4	2.0	5.0	2.0	0.9	0.2	79.7	4.8	15.5	0.097	0.501	20.583910	-101.141350

28 CARR: Querétaro - Irapuato (Cuota)

CLAVE: 00423

RUTA: MEX-045D

AÑO: 2015

LUGAR	ESTACION				CLASIFICACION VEHICULAR EN PORCIENTO														COORDENADAS	
	KM	TE	SC	TDPA	M	A	B	C2	C3	T3S2	T3S3	T3S2R4	OTROS	A	B	C	K'	D	LATITUD	LONGITUD
Querétaro	0.00	3	1	17762	0.0	74.3	4.4	5.8	4.1	5.6	3.3	2.4	0.1	74.3	4.4	21.3	0.061	0.507	20.576667	-100.420667
Querétaro	0.00	3	2	17299	0.1	73.4	4.9	5.9	3.1	6.1	3.8	2.4	0.3	73.5	4.9	21.6	0.064	0.507	20.576667	-100.420667
Caseta de Cobro Querétaro	7.00	2	1	10360	0.2	63.2	5.3	4.6	6.2	13.2	1.5	4.9	0.9	63.4	5.3	31.3	0.079	0.500	20.572188	-100.472977
Caseta de Cobro Querétaro	7.00	2	2	10360	0.2	63.2	5.3	4.6	6.2	13.2	1.5	4.9	0.9	63.4	5.3	31.3	0.079	0.500	20.572188	-100.472977
Lim. Edos. Term. Qro. Ppia. Gto.	8.97																			
X. C. Celaya - Dolores Hidalgo	44.10	1	1	17726	0.0	73.4	4.4	5.7	3.0	8.4	3.3	1.6	0.2	73.4	4.4	22.2	0.060	0.507	20.557111	-100.815528



GUANAJUATO

28 CARR: Querétaro - Irapuato (Cuota)

CLAVE: 00423

RUTA: MEX-045D

AÑO: 2015

LUGAR	ESTACION				CLASIFICACION VEHICULAR EN PORCIENTO														COORDENADAS	
	KM	TE	SC	TDPA	M	A	B	C2	C3	T3S2	T3S3	T3S2R4	OTROS	A	B	C	K'	D	LATITUD	LONGITUD
X. C. Celaya - Dolores Hidalgo	44.10	1	2	17239	0.0	72.6	4.9	6.7	2.6	7.6	3.7	1.6	0.3	72.6	4.9	22.5	0.060	0.507	20.557111	-100.815528
T. Izq. Salamanca	81.54	1	1	6807	0.1	68.2	5.7	8.0	4.4	9.5	2.1	1.6	0.4	68.3	5.7	26.0	0.067	0.505	20.596940	-101.173100
T. Izq. Salamanca	81.54	1	2	6954	0.1	70.0	4.1	6.1	3.9	11.6	2.8	1.2	0.2	70.1	4.1	25.8	0.079	0.505	20.596860	-101.173120
T. Izq. Salamanca	81.54	3	1	7370	0.1	69.6	5.4	8.7	3.5	8.5	2.6	1.4	0.2	69.7	5.4	24.9	0.079	0.504	20.599530	-101.186220
T. Izq. Salamanca	81.54	3	2	7500	0.1	67.1	5.7	9.9	4.2	7.5	3.0	2.2	0.3	67.2	5.7	27.1	0.072	0.504	20.599400	-101.185840
Caseta de Cobro Salamanca	83.25	2	1	6334	0.2	55.1	5.1	4.6	6.2	19.1	1.6	7.3	0.8	55.3	5.1	39.6	0.079	0.500	20.598618	-101.180922
Caseta de Cobro Salamanca	83.25	2	2	6334	0.2	55.1	5.1	4.6	6.2	19.1	1.6	7.3	0.8	55.3	5.1	39.6	0.079	0.500	20.598618	-101.180922
T. Der. Libramiento de Irapuato	96.30	1	1	9048	0.1	72.2	3.3	7.9	3.0	8.3	2.8	2.0	0.4	72.3	3.3	24.4	0.068	0.501	20.651880	-101.285000
T. Der. Libramiento de Irapuato	96.30	1	2	9094	0.1	74.5	3.0	6.9	2.9	8.7	2.1	1.5	0.3	74.6	3.0	22.4	0.065	0.501	20.651880	-101.285000
T. Der. Libramiento de Irapuato	96.30	3	1	18780	0.8	75.5	3.4	5.2	3.8	6.4	1.9	2.1	0.9	76.3	3.4	20.3	0.074	0.537	20.654540	-101.294530
T. Der. Libramiento de Irapuato	96.30	3	2	16999	0.1	74.9	3.4	6.3	2.6	7.8	2.5	2.1	0.3	75.0	3.4	21.6	0.051	0.520	20.654530	-101.294540
T. C. Irapuato - Zapotlanejo	104.70																			

29 CARR: Ent. Begoña - Ent. Presa de Manantiales

CLAVE: 11812

RUTA: GTO

AÑO: 2015

LUGAR	ESTACION				CLASIFICACION VEHICULAR EN PORCIENTO														COORDENADAS	
	KM	TE	SC	TDPA	M	A	B	C2	C3	T3S2	T3S3	T3S2R4	OTROS	A	B	C	K'	D	LATITUD	LONGITUD
T. C. Celaya - Dolores Hidalgo	0.00	3	0	2110	0.2	82.9	3.1	10.3	1.9	1.0	0.4	0.1	0.1	83.1	3.1	13.8	0.089	0.509	20.833410	-100.800300
T. C. Guanajuato - Santa Rita	37.00	1	0	3671	0.3	83.8	3.1	7.9	2.4	1.4	0.5	0.3	0.3	84.1	3.1	12.8	0.077	0.509	20.889680	-101.026480

30 CARR: Ent. San Miguel de Allende - Dr. Mora

CLAVE: 11001

RUTA: GTO-001

AÑO: 2015

LUGAR	ESTACION				CLASIFICACION VEHICULAR EN PORCIENTO														COORDENADAS	
	KM	TE	SC	TDPA	M	A	B	C2	C3	T3S2	T3S3	T3S2R4	OTROS	A	B	C	K'	D	LATITUD	LONGITUD
T. C. Ent. Buenavista - San Miguel de Allende	0.00	3	0	7343	0.3	80.9	3.8	6.3	2.6	3.7	1.3	0.8	0.3	81.2	3.8	15.0	0.073	0.501	20.919110	-100.701420
X. C. Querétaro - San Luis Potosí	32.00	1	0	3700	0.4	83.4	2.1	5.5	2.8	3.8	1.4	0.4	0.2	83.8	2.1	14.1	0.087	0.537	21.074050	-100.529580
X. C. Querétaro - San Luis Potosí	32.00	3	0	5188	0.4	81.7	1.2	9.0	2.3	3.6	0.9	0.6	0.3	82.1	1.2	16.7	0.083	0.513	21.082420	-100.509780
X. C. San Luis de La Paz - San José Iturbide	38.00	3	0	2900	0.2	89.6	1.0	6.2	1.5	0.8	0.4	0.2	0.1	89.8	1.0	9.2	0.072	0.506	21.105060	-100.450840
Dr. Mora	54.00																			

31 CARR: Guanajuato - Santa Rita

CLAVE: 11810

RUTA: GTO

AÑO: 2015

LUGAR	ESTACION				CLASIFICACION VEHICULAR EN PORCIENTO														COORDENADAS	
	KM	TE	SC	TDPA	M	A	B	C2	C3	T3S2	T3S3	T3S2R4	OTROS	A	B	C	K'	D	LATITUD	LONGITUD
T. C. Guanajuato - Los Infantes	0.00	3	1	31650	2.2	92.6	0.2	3.3	0.2	0.6	0.5	0.1	0.3	94.8	0.2	5.0	0.075	0.508	20.989500	-101.285140

GUANAJUATO

31 CARR: Guanajuato - Santa Rita

CLAVE: 11810

RUTA: GTO

AÑO: 2015

LUGAR	ESTACION				CLASIFICACION VEHICULAR EN PORCIENTO													COORDENADAS		
	KM	TE	SC	TDPA	M	A	B	C2	C3	T3S2	T3S3	T3S2R4	OTROS	A	B	C	K'	D	LATITUD	LONGITUD
T. C. Guanajuato - Los Infantes	0.00	3	2	31052	2.2	92.1	0.2	3.7	0.2	0.7	0.5	0.1	0.3	94.3	0.2	5.5	0.079	0.508	20.989500	-101.285140
T. Der. Puenteceillas	3.06	1	1	16693	0.0	92.7	0.6	3.1	1.7	0.6	0.3	0.6	0.4	92.7	0.6	6.7	0.066	0.520	20.971240	-100.279110
T. Der. Puenteceillas	3.06	1	2	15401	0.0	92.0	0.6	3.5	1.8	0.7	0.2	0.8	0.4	92.0	0.6	7.4	0.061	0.520	20.971240	-100.279110
T. Der. Puenteceillas	3.06	3	0	10694	0.1	91.5	0.5	3.9	1.6	1.4	0.4	0.4	0.2	91.6	0.5	7.9	0.084	0.510	20.961560	-101.273360
T. Izq. San Miguel de Allende	35.45	1	0	3625	0.2	90.9	1.4	3.7	1.7	1.2	0.5	0.2	0.2	91.1	1.4	7.5	0.084	0.508	20.889960	-101.029790
T. Izq. San Miguel de Allende	35.45	3	0	2503	0.2	90.5	0.7	4.8	1.8	1.2	0.5	0.2	0.1	90.7	0.7	8.6	0.085	0.509	20.887790	-101.026850
T. Der. Juventino Rosas	71.62	1	1	1220	0.5	86.0	0.4	6.2	2.6	2.1	0.9	1.0	0.3	86.5	0.4	13.1	0.099	0.517	20.659840	-100.996150
T. Der. Juventino Rosas	71.62	1	2	1306	0.5	87.7	0.6	5.6	2.8	1.0	0.6	0.8	0.4	88.2	0.6	11.2	0.091	0.517	20.659840	-100.996150
T. Der. Juventino Rosas	71.62	3	1	4400	0.1	90.0	0.5	6.2	0.9	1.0	0.5	0.6	0.2	90.1	0.5	9.4	0.083	0.512	20.632440	-100.974557
T. Der. Juventino Rosas	71.62	3	2	4187	0.1	87.2	1.0	7.0	1.8	1.4	0.6	0.6	0.3	87.3	1.0	11.7	0.083	0.512	20.632440	-100.974557
T. C. Celaya - Dolores Hidalgo	92.00	1	1	6313	0.2	88.2	2.2	5.6	1.4	0.9	0.5	0.6	0.4	88.4	2.2	9.4	0.080	0.505	20.575750	-100.823750
T. C. Celaya - Dolores Hidalgo	92.00	1	2	6179	0.1	87.6	1.8	6.3	1.4	1.2	0.5	0.9	0.2	87.7	1.8	10.5	0.088	0.505	20.575750	-100.823750

32 CARR: Jalostotitán - Purísima de Bustos

CLAVE: 00142

RUTA: JAL-GTO

AÑO: 2015

LUGAR	ESTACION				CLASIFICACION VEHICULAR EN PORCIENTO													COORDENADAS		
	KM	TE	SC	TDPA	M	A	B	C2	C3	T3S2	T3S3	T3S2R4	OTROS	A	B	C	K'	D	LATITUD	LONGITUD
Jalostotitán	0.00	3	0	5586	2.9	83.0	0.7	8.0	1.5	3.0	0.7	0.2	0.0	85.9	0.7	13.4	0.073	0.509	21.150389	-102.461528
San Miguel El Alto	19.00	3	0	5599	2.7	77.3	1.1	11.5	3.0	2.9	1.0	0.3	0.2	80.0	1.1	18.9	0.084	0.501	21.025583	-102.372444
San Diego de Alejandría	63.00	3	0	4081	1.9	77.4	1.5	11.1	2.5	3.9	0.9	0.4	0.4	79.3	1.5	19.2	0.078	0.501	20.998861	-101.990056
Lim. Edos. Term. Jal. Ppia. Gto.	66.00																			
Purísima de Bustos	78.00	1	0	4234	0.2	87.4	1.5	5.1	2.0	2.4	0.8	0.4	0.2	87.6	1.5	10.9	0.073	0.507	21.016120	-101.894470

33 CARR: León - Manuel Doblado

CLAVE: 11069

RUTA: GTO-037

AÑO: 2015

LUGAR	ESTACION				CLASIFICACION VEHICULAR EN PORCIENTO													COORDENADAS		
	KM	TE	SC	TDPA	M	A	B	C2	C3	T3S2	T3S3	T3S2R4	OTROS	A	B	C	K'	D	LATITUD	LONGITUD
León	0.00	3	1	20137	2.4	87.3	0.9	5.6	1.5	1.1	0.8	0.1	0.3	89.7	0.9	9.4	0.068	0.508	21.091380	-101.734922
León	0.00	3	2	20338	3.0	85.4	1.0	6.5	1.6	1.2	0.9	0.1	0.3	88.4	1.0	10.6	0.063	0.508	21.091380	-101.734922
X. C. León - Aguascalientes (Cuota)	4.60	3	1	16117	0.1	85.9	1.8	6.1	2.8	1.6	0.6	0.7	0.4	86.0	1.8	12.2	0.066	0.515	21.079306	-101.750389
X. C. León - Aguascalientes (Cuota)	4.60	3	2	17114	0.0	88.0	2.0	5.8	1.4	1.2	0.5	0.8	0.3	88.0	2.0	10.0	0.070	0.515	21.079306	-101.750389
San Francisco del Rincón	23.00	1	1	14035	0.1	83.0	1.9	9.1	2.6	1.6	0.8	0.6	0.3	83.1	1.9	15.0	0.071	0.520	21.037430	-101.817540
San Francisco del Rincón	23.00	1	2	12966	0.1	85.1	1.3	7.6	3.1	1.6	0.7	0.5	0.0	85.2	1.3	13.5	0.076	0.520	21.037430	-101.817540
Purísima de Bustos	26.00	1	1	10996	0.1	89.5	0.8	6.3	1.7	0.8	0.3	0.3	0.2	89.6	0.8	9.6	0.082	0.502	21.028840	-101.848880
Purísima de Bustos	26.00	1	2	11090	0.1	89.1	0.6	6.7	1.6	0.7	0.4	0.8	0.0	89.2	0.6	10.2	0.071	0.502	21.028840	-101.848880

GUANAJUATO

33 CARR: León - Manuel Doblado

CLAVE: 11069

RUTA: GTO-037

AÑO: 2015

LUGAR	ESTACION				CLASIFICACION VEHICULAR EN PORCIENTO										COORDENADAS					
	KM	TE	SC	TDPA	M	A	B	C2	C3	T3S2	T3S3	T3S2R4	OTROS	A	B	C	K'	D	LATITUD	LONGITUD
T. Der. San Julián	29.00	1	0	6142	0.2	89.6	0.9	5.7	2.0	1.1	0.3	0.2	0.0	89.8	0.9	9.3	0.079	0.513	21.022630	-101.891470
T. Der. San Julián	29.00	3	0	4603	0.1	89.2	0.7	5.8	2.1	1.5	0.4	0.2	0.0	89.3	0.7	10.0	0.082	0.500	21.005579	-101.892090
T. Izq. Guadalupe de Jalpa	51.00	3	0	1250	0.2	88.8	0.7	8.3	1.0	0.6	0.1	0.2	0.1	89.0	0.7	10.3	0.084	0.510	20.869670	-101.989110
Manuel Doblado	68.00	1	0	2894	0.2	90.5	0.8	5.5	1.6	0.9	0.4	0.1	0.0	90.7	0.8	8.5	0.074	0.506	20.744640	-101.958470

34 CARR: León - San Felipe Torres Mochas

CLAVE: 11036

RUTA: GTO

AÑO: 2015

LUGAR	ESTACION				CLASIFICACION VEHICULAR EN PORCIENTO										COORDENADAS					
	KM	TE	SC	TDPA	M	A	B	C2	C3	T3S2	T3S3	T3S2R4	OTROS	A	B	C	K'	D	LATITUD	LONGITUD
León	0.00	3	1	13447	0.0	95.1	0.5	2.3	0.8	0.6	0.1	0.4	0.2	95.1	0.5	4.4	0.068	0.535	21.167925	-101.664106
León	0.00	3	2	15472	0.1	92.8	1.0	2.4	0.4	1.5	0.8	0.4	0.6	92.9	1.0	6.1	0.082	0.535	21.167925	-101.664106
X. C. Libramiento de León	6.50	3	0	14780	0.1	88.9	1.4	4.9	1.4	1.5	0.7	0.8	0.3	89.0	1.4	9.6	0.072	0.502	21.202130	-101.674812
Lim. Edos. Term. Gto. Ppia. Jal.	17.00																			
Lim. Edos. Term. Jal. Ppia. Gto.	38.00																			
San Felipe Torres Mochas	98.00	1	0	7187	0.1	68.5	2.6	8.7	3.2	11.2	4.0	1.3	0.4	68.6	2.6	28.8	0.078	0.508	21.428969	-101.237498

35 CARR: Libramiento de Abasolo

CLAVE: 11011

RUTA: GTO

AÑO: 2015

LUGAR	ESTACION				CLASIFICACION VEHICULAR EN PORCIENTO										COORDENADAS					
	KM	TE	SC	TDPA	M	A	B	C2	C3	T3S2	T3S3	T3S2R4	OTROS	A	B	C	K'	D	LATITUD	LONGITUD
T. C. Irapuato - Guadalajara (1º Acceso)	0.00	3	1	10672	0.1	67.1	4.2	12.8	4.4	8.2	2.1	0.9	0.2	67.2	4.2	28.6	0.070	0.501	20.464830	-101.515000
T. C. Irapuato - Guadalajara (1º Acceso)	0.00	3	2	10645	0.0	64.9	3.9	11.4	4.2	10.2	3.4	1.8	0.2	64.9	3.9	31.2	0.067	0.501	20.464830	-101.515000
T. C. Irapuato - Zapotlanejo (2º Acceso)	2.50																			

36 CARR: Libramiento de Salamanca

CLAVE: 11002

RUTA: GTO

AÑO: 2015

LUGAR	ESTACION				CLASIFICACION VEHICULAR EN PORCIENTO										COORDENADAS					
	KM	TE	SC	TDPA	M	A	B	C2	C3	T3S2	T3S3	T3S2R4	OTROS	A	B	C	K'	D	LATITUD	LONGITUD
T. C. Querétaro - Irapuato Libre	0.00	3	1	12127	0.0	61.2	5.7	14.9	4.9	7.5	3.2	2.0	0.6	61.2	5.7	33.1	0.078	0.516	20.553861	-101.175028
T. C. Querétaro - Irapuato Libre	0.00	3	2	11392	0.1	60.6	5.2	15.6	4.7	6.8	3.5	2.4	1.1	60.7	5.2	34.1	0.072	0.516	20.553861	-101.175028
T. C. Querétaro - Irapuato Libre	11.00	1	1	19343	0.0	71.0	6.2	8.1	3.7	7.0	1.9	1.6	0.5	71.0	6.2	22.8	0.075	0.504	20.579000	-101.227194
T. C. Querétaro - Irapuato Libre	11.00	1	2	19043	0.0	74.0	5.2	7.2	3.5	6.3	2.2	1.4	0.2	74.0	5.2	20.8	0.071	0.504	20.579000	-101.227194

GUANAJUATO

37 CARR: Libramiento de Salvatierra

CLAVE: 11012

RUTA: GTO

AÑO: 2015

LUGAR	ESTACION				CLASIFICACION VEHICULAR EN PORCIENTO													COORDENADAS		
	KM	TE	SC	TDPA	M	A	B	C2	C3	T3S2	T3S3	T3S2R4	OTROS	A	B	C	K'	D	LATITUD	LONGITUD
T. C. Acámbaro - Celaya	0.00																			
T. C. Salvatierra - (T. C. Morelia - Salamanca)	2.50	3	1	9658	0.1	87.8	1.5	6.4	1.5	1.2	0.6	0.8	0.1	87.9	1.5	10.6	0.075	0.507	20.218410	-100.892720
T. C. Salvatierra - (T. C. Morelia - Salamanca)	2.50	3	2	9391	0.1	86.9	2.0	5.8	1.9	1.3	0.9	0.6	0.5	87.0	2.0	11.0	0.080	0.507	20.218410	-100.892720
T. C. Acámbaro - Celaya	4.50	1	1	8440	0.1	85.2	2.9	6.6	1.7	1.5	0.7	1.1	0.2	85.3	2.9	11.8	0.066	0.508	20.218900	-100.879270
T. C. Acámbaro - Celaya	4.50	1	2	8702	0.1	85.9	2.6	7.5	1.1	1.3	0.6	0.7	0.2	86.0	2.6	11.4	0.073	0.508	20.218900	-100.879270

38 CARR: Libramiento de San Felipe Torres Mochas

CLAVE: 11012

RUTA: GTO

AÑO: 2015

LUGAR	ESTACION				CLASIFICACION VEHICULAR EN PORCIENTO													COORDENADAS		
	KM	TE	SC	TDPA	M	A	B	C2	C3	T3S2	T3S3	T3S2R4	OTROS	A	B	C	K'	D	LATITUD	LONGITUD
T. C. León - San Felipe Torres Mochas	0.00	3	0	3978	0.2	76.1	1.5	11.1	2.1	6.8	1.8	0.2	0.2	76.3	1.5	22.2	0.079	0.504	21.435439	-101.230550
T. C. Ent. de Zaragoza - San Felipe	10.00	1	0	4892	1.2	52.0	3.1	8.1	3.6	25.4	3.6	2.0	1.0	53.2	3.1	43.7	0.069	0.504	21.474019	-101.161060

39 CARR: Libramiento de San Luis de La Paz

CLAVE: 11014

RUTA: GTO

AÑO: 2015

LUGAR	ESTACION				CLASIFICACION VEHICULAR EN PORCIENTO													COORDENADAS		
	KM	TE	SC	TDPA	M	A	B	C2	C3	T3S2	T3S3	T3S2R4	OTROS	A	B	C	K'	D	LATITUD	LONGITUD
T. C. San Luis de La Paz - Guanajuato	0.00	3	1	4770	0.2	87.9	1.9	5.8	2.4	0.8	0.3	0.4	0.3	88.1	1.9	10.0	0.088	0.500	21.292299	-100.530060
T. C. San Luis de La Paz - Guanajuato	0.00	3	2	4776	0.1	89.3	1.2	5.5	2.1	1.0	0.3	0.3	0.2	89.4	1.2	9.4	0.081	0.500	21.292299	-100.530060
T. C. San Luis de La Paz - Cañada de Moreno	3.60	1	1	1824	0.3	83.7	1.0	11.1	2.0	0.9	0.5	0.3	0.2	84.0	1.0	15.0	0.094	0.511	21.294231	-100.489910
T. C. San Luis de La Paz - Cañada de Moreno	3.60	1	2	1904	0.0	86.5	1.1	8.4	2.0	1.2	0.6	0.0	0.2	86.5	1.1	12.4	0.085	0.511	21.294231	-100.489910

40 CARR: Manuel Doblado - Plan de Ayala

CLAVE: 11028

RUTA: GTO

AÑO: 2015

LUGAR	ESTACION				CLASIFICACION VEHICULAR EN PORCIENTO													COORDENADAS		
	KM	TE	SC	TDPA	M	A	B	C2	C3	T3S2	T3S3	T3S2R4	OTROS	A	B	C	K'	D	LATITUD	LONGITUD
T. C. Manuel Doblado - La Piedad	0.00	3	0	5669	0.2	81.7	1.2	10.1	2.2	3.3	0.8	0.4	0.1	81.9	1.2	16.9	0.084	0.502	20.743860	-101.929230
T. Izq. a San Francisco del Rincón	31.49	1	0	5595	0.2	85.1	2.3	7.8	1.8	1.6	0.8	0.3	0.1	85.3	2.3	12.4	0.083	0.500	20.977180	-101.847920
Plan de Ayala	48.35	1	0	6202	0.2	86.6	1.7	6.8	1.3	1.8	0.7	0.5	0.4	86.8	1.7	11.5	0.091	0.507	21.065790	-101.728760

41 CARR: Nuevo Libramiento de León

CLAVE: 11133

RUTA: GTO

AÑO: 2015

LUGAR	ESTACION				CLASIFICACION VEHICULAR EN PORCIENTO													COORDENADAS		
	KM	TE	SC	TDPA	M	A	B	C2	C3	T3S2	T3S3	T3S2R4	OTROS	A	B	C	K'	D	LATITUD	LONGITUD
T. C. Irapuato - León	0.00	3	1	39998	1.4	84.8	1.8	6.0	1.1	2.0	1.9	0.5	0.5	86.2	1.8	12.0	0.085	0.524	21.103120	-101.623482

GUANAJUATO

41 CARR: Nuevo Libramiento de León

CLAVE: 11133

RUTA: GTO

AÑO: 2015

LUGAR	ESTACION				CLASIFICACION VEHICULAR EN PORCIENTO														COORDENADAS	
	KM	TE	SC	TDPA	M	A	B	C2	C3	T3S2	T3S3	T3S2R4	OTROS	A	B	C	K'	D	LATITUD	LONGITUD
T. C. Irapuato - León	0.00	3	2	35549	2.1	82.4	1.8	7.1	1.2	2.3	2.1	0.5	0.5	84.5	1.8	13.7	0.085	0.524	21.103120	-101.623482
T. Der. Ibarilla	9.58	3	1	17573	0.1	86.8	1.1	7.2	0.9	2.1	1.1	0.6	0.1	86.9	1.1	12.0	0.065	0.510	21.172568	-101.658696
T. Der. Ibarilla	9.58	3	2	18319	0.0	85.5	2.3	4.9	2.3	2.2	2.0	0.5	0.3	85.5	2.3	12.2	0.059	0.510	21.172568	-101.658696
T. C. León - Aguascalientes	18.39	1	0	14699	0.1	85.4	1.7	4.4	1.8	3.6	1.9	0.8	0.3	85.5	1.7	12.8	0.088	0.502	21.174681	-101.731547

42 CARR: Ramal a San Diego de La Unión

CLAVE: 11818

RUTA: GTO

AÑO: 2015

LUGAR	ESTACION				CLASIFICACION VEHICULAR EN PORCIENTO														COORDENADAS	
	KM	TE	SC	TDPA	M	A	B	C2	C3	T3S2	T3S3	T3S2R4	OTROS	A	B	C	K'	D	LATITUD	LONGITUD
T. C. San Luis de La Paz - Guanajuato	0.00	3	0	3437	0.0	85.0	2.6	6.8	1.7	2.3	1.2	0.0	0.4	85.0	2.6	12.4	0.073	0.514	21.200896	-100.870670
San Diego de La Unión	31.00																			

43 CARR: Romita - El Saucillo

CLAVE: 11201

RUTA: GTO

AÑO: 2015

LUGAR	ESTACION				CLASIFICACION VEHICULAR EN PORCIENTO														COORDENADAS	
	KM	TE	SC	TDPA	M	A	B	C2	C3	T3S2	T3S3	T3S2R4	OTROS	A	B	C	K'	D	LATITUD	LONGITUD
Romita	0.00																			
T. C. Munguía - Las Adjuntas	35.50	1	0	2076	0.4	87.2	2.9	6.3	2.0	0.7	0.3	0.2	0.0	87.6	2.9	9.5	0.090	0.502	20.694190	-101.706680

44 CARR: Salamanca - Juventino Rosas

CLAVE: 11817

RUTA: GTO

AÑO: 2015

LUGAR	ESTACION				CLASIFICACION VEHICULAR EN PORCIENTO														COORDENADAS	
	KM	TE	SC	TDPA	M	A	B	C2	C3	T3S2	T3S3	T3S2R4	OTROS	A	B	C	K'	D	LATITUD	LONGITUD
Salamanca	0.00	3	0	6013	0.1	89.5	0.6	4.3	2.0	2.1	0.6	0.3	0.5	89.6	0.6	9.8	0.082	0.511	20.582530	-101.152390
Juventino Rosas	20.00	1	0	3733	0.4	81.8	1.5	10.0	2.4	2.3	0.9	0.5	0.2	82.2	1.5	16.3	0.080	0.510	20.631630	-101.010860

45 CARR: Salvatierra - Cortázar

CLAVE: 11327

RUTA: GTO

AÑO: 2015

LUGAR	ESTACION				CLASIFICACION VEHICULAR EN PORCIENTO														COORDENADAS	
	KM	TE	SC	TDPA	M	A	B	C2	C3	T3S2	T3S3	T3S2R4	OTROS	A	B	C	K'	D	LATITUD	LONGITUD
T. C. Acámbaro - Celaya	0.00	3	0	7161	0.1	87.1	1.6	6.8	1.6	1.7	0.5	0.5	0.1	87.2	1.6	11.2	0.087	0.506	20.224070	-100.883200
Cortazar	31.80	1	0	5321	0.1	84.4	1.5	9.9	1.1	1.9	0.6	0.3	0.2	84.5	1.5	14.0	0.094	0.505	20.464333	-100.963667

GUANAJUATO

46 CARR : San Luis de La Paz - San José Iturbide

CLAVE: 11046

RUTA: GTO

AÑO: 2015

LUGAR	ESTACION				CLASIFICACION VEHICULAR EN PORCIENTO										COORDENADAS					
	KM	TE	SC	TDPA	M	A	B	C2	C3	T3S2	T3S3	T3S2R4	OTROS	A	B	C	K'	D	LATITUD	LONGITUD
San Luis de La Paz	0.00	3	0	5603	0.1	92.9	1.7	3.9	1.4	0.0	0.0	0.0	0.0	93.0	1.7	5.3	0.079	0.508	21.286260	-100.507130
Estación Pozo	8.00	3	0	2380	0.3	87.7	4.1	5.3	1.6	0.6	0.2	0.2	0.0	88.0	4.1	7.9	0.103	0.501	21.217010	-100.496850
X. C. Ent. San Miguel Allende - Dr. Mora	21.50	1	0	3767	0.2	87.6	2.6	6.0	1.9	0.9	0.5	0.3	0.0	87.8	2.6	9.6	0.088	0.504	21.106080	-100.457080
San José Iturbide	36.50	1	0	10591	0.1	90.3	0.8	4.7	1.6	1.8	0.3	0.3	0.1	90.4	0.8	8.8	0.087	0.503	21.019110	-100.394360

47 CARR : Silao - La Romita

CLAVE: 11029

RUTA: GTO

AÑO: 2015

LUGAR	ESTACION				CLASIFICACION VEHICULAR EN PORCIENTO										COORDENADAS					
	KM	TE	SC	TDPA	M	A	B	C2	C3	T3S2	T3S3	T3S2R4	OTROS	A	B	C	K'	D	LATITUD	LONGITUD
Silao	0.00	3	1	6969	6.5	80.1	0.9	8.6	1.1	1.0	1.0	0.4	0.4	86.6	0.9	12.5	0.079	0.515	20.930300	-101.445140
Silao	0.00	3	2	6650	6.5	79.7	1.0	8.8	1.1	1.0	1.1	0.4	0.4	86.2	1.0	12.8	0.065	0.515	20.930180	-101.445110
Romita	13.00																			

48 CARR : Silao - Los Arrastres

CLAVE: 11029

RUTA: GTO

AÑO: 2015

LUGAR	ESTACION				CLASIFICACION VEHICULAR EN PORCIENTO										COORDENADAS					
	KM	TE	SC	TDPA	M	A	B	C2	C3	T3S2	T3S3	T3S2R4	OTROS	A	B	C	K'	D	LATITUD	LONGITUD
Silao	0.00	3	0	12239	0.1	72.3	3.8	7.0	2.4	10.0	2.6	1.5	0.3	72.4	3.8	23.8	0.088	0.500	20.970730	-101.419974
T. C. León - San Felipe Torres Mochas	49.50	1	0	5760	0.0	76.1	2.7	5.0	1.9	11.0	2.3	0.3	0.7	76.1	2.7	21.2	0.086	0.521	21.305663	-101.280120

49 CARR : T. C. (Villa del Pueblito - Huimilpan) - Coroneo

CLAVE: 00155

RUTA: QRO-GTO

AÑO: 2015

LUGAR	ESTACION				CLASIFICACION VEHICULAR EN PORCIENTO										COORDENADAS					
	KM	TE	SC	TDPA	M	A	B	C2	C3	T3S2	T3S3	T3S2R4	OTROS	A	B	C	K'	D	LATITUD	LONGITUD
T. C. Villa del Pueblito - Huimilpan	0.00	3	0	6474	0.3	81.2	2.8	7.3	2.9	3.3	1.3	0.7	0.2	81.5	2.8	15.7	0.099	0.504	20.517139	-100.430139
Lim. Edos. Term. Qro. Ppia. Gto.	20.00																			
Coroneo	45.20	1	0	3047	0.2	92.2	0.5	5.4	0.9	0.6	0.2	0.0	0.0	92.4	0.5	7.1	0.117	0.504	20.213470	-100.366540

50 CARR : Guanajuato - Silao (Cuota)

CLAVE: 11810

RUTA: GTO-110D

AÑO: 2015

LUGAR	ESTACION				CLASIFICACION VEHICULAR EN PORCIENTO										COORDENADAS					
	KM	TE	SC	TDPA	M	A	B	C2	C3	T3S2	T3S3	T3S2R4	OTROS	A	B	C	K'	D	LATITUD	LONGITUD
T. C. Guanajuato - Santa Rita	0.00																			
X. C. Santa Teresa - Silao	3.76	1	1	8912	0.1	90.3	1.6	5.8	1.2	0.5	0.3	0.2	0.0	90.4	1.6	8.0	0.088	0.511	20.968620	-101.317390
X. C. Santa Teresa - Silao	3.76	1	2	8612	0.1	91.1	1.1	5.7	1.1	0.6	0.3	0.0	0.0	91.2	1.1	7.7	0.114	0.511	20.968620	-101.317390

GUANAJUATO

50 CARR : Guanajuato - Silao (Cuota)

CLAVE: 11810

RUTA: GTO-110D

AÑO : 2015

LUGAR	ESTACION				CLASIFICACION VEHICULAR EN PORCIENTO														COORDENADAS		
	KM	TE	SC	TDPA	M	A	B	C2	C3	T3S2	T3S3	T3S2R4	OTROS	A	B	C	K'	D	LATITUD	LONGITUD	
T. C. Irapuato - León	14.55																				

51 CARR : Libramiento de Celaya (Cuota)

CLAVE: 11011

RUTA: GTO-D

AÑO : 2015

LUGAR	ESTACION				CLASIFICACION VEHICULAR EN PORCIENTO														COORDENADAS	
	KM	TE	SC	TDPA	M	A	B	C2	C3	T3S2	T3S3	T3S2R4	OTROS	A	B	C	K'	D	LATITUD	LONGITUD
T. C. Querétaro - Irapuato	0.00	3	1	5270	0.1	53.1	4.4	7.0	3.7	20.8	7.7	2.8	0.4	53.2	4.4	42.4	0.071	0.502	20.512083	-100.764944
T. C. Querétaro - Irapuato	0.00	3	2	5312	0.1	56.7	3.7	6.6	2.9	21.0	6.9	1.7	0.4	56.8	3.7	39.5	0.073	0.502	20.512083	-100.764944
T. C. Querétaro - Irapuato	16.45	1	1	4377	0.1	54.0	4.1	7.8	2.6	20.3	8.7	1.8	0.6	54.1	4.1	41.8	0.058	0.503	20.509925	-100.871887
T. C. Querétaro - Irapuato	16.45	1	2	4505	0.0	54.0	4.4	7.5	3.4	19.6	8.5	2.2	0.4	54.0	4.4	41.6	0.071	0.503	20.509925	-100.871887

52 CARR : Celaya - Dolores Hidalgo

CLAVE: 11109

RUTA: MEX-051-GTO

AÑO : 2015

LUGAR	ESTACION				CLASIFICACION VEHICULAR EN PORCIENTO														COORDENADAS		
	KM	TE	SC	TDPA	M	A	B	C2	C3	T3S2	T3S3	T3S2R4	OTROS	A	B	C	K'	D	LATITUD	LONGITUD	
Celaya	0.00																				
X. C. Querétaro - Irapuato (Cuota)	3.90	1	1	17733	0.0	84.8	2.6	5.8	1.3	2.8	1.6	1.0	0.1	84.8	2.6	12.6	0.070	0.525	20.556111	-100.822389	
X. C. Querétaro - Irapuato (Cuota)	3.90	1	2	17672	0.0	86.9	1.5	5.4	1.5	2.1	1.3	1.0	0.3	86.9	1.5	11.6	0.058	0.525	20.556111	-100.822389	
X. C. Querétaro - Irapuato (Cuota)	3.90	3	1	16967	0.0	87.3	1.6	4.5	1.9	2.2	1.5	0.7	0.3	87.3	1.6	11.1	0.065	0.506	20.560333	-100.822306	
X. C. Querétaro - Irapuato (Cuota)	3.90	3	2	17398	0.0	87.7	2.1	4.2	1.7	2.0	1.5	0.6	0.2	87.7	2.1	10.2	0.057	0.506	20.560333	-100.822306	
T. Izq. Juventino Rosas	6.92	3	1	10031	0.1	88.3	1.5	5.5	1.3	1.7	0.9	0.5	0.2	88.4	1.5	10.1	0.078	0.522	20.576636	-100.820475	
T. Izq. Juventino Rosas	6.92	3	2	10960	0.1	87.9	1.9	5.5	1.7	1.6	0.6	0.6	0.1	88.0	1.9	10.1	0.069	0.522	20.576636	-100.820475	
X. C. Santa Cruz - San Juan de La Vega	12.44	3	1	8254	0.1	87.9	2.0	4.9	1.5	2.0	1.0	0.5	0.1	88.0	2.0	10.0	0.090	0.501	20.628083	-100.784139	
X. C. Santa Cruz - San Juan de La Vega	12.44	3	2	8230	0.1	89.3	1.8	4.0	1.6	1.7	0.6	0.7	0.2	89.4	1.8	8.8	0.081	0.501	20.628083	-100.784139	
Comonfort	24.50	1	1	2990	0.2	86.3	1.7	6.9	1.3	1.7	1.0	0.6	0.3	86.5	1.7	11.8	0.088	0.511	20.706972	-100.753194	
Comonfort	24.50	1	2	2865	0.2	90.0	1.3	5.3	1.3	1.1	0.4	0.3	0.1	90.2	1.3	8.5	0.085	0.511	20.706972	-100.753194	
San Miguel de Allende	49.90	1	1	5096	0.2	89.6	1.1	5.3	1.5	1.4	0.5	0.3	0.1	89.8	1.1	9.1	0.085	0.503	20.882550	-100.770870	
San Miguel de Allende	49.90	1	2	5151	0.2	88.2	2.0	5.4	2.0	1.3	0.5	0.2	0.2	88.4	2.0	9.6	0.088	0.503	20.882550	-100.770870	
T. Izq. Atotonilco	65.60	1	0	8033	0.2	85.5	2.2	5.3	2.4	2.5	1.1	0.6	0.2	85.7	2.2	12.1	0.077	0.504	21.017180	-100.787860	
T. Izq. Atotonilco	65.60	3	0	6878	0.3	87.2	2.3	5.0	1.7	2.2	0.7	0.4	0.2	87.5	2.3	10.2	0.078	0.556	21.033840	-100.792800	
T. C. San Luis de La Paz - Guanajuato	85.42	1	0	7342	0.0	89.1	1.6	4.0	1.9	2.1	1.0	0.0	0.3	89.1	1.6	9.3	0.079	0.512	21.161399	-100.886267	

GUANAJUATO

53 CARR: Cortázar - Valle de Santiago

CLAVE: 11016

RUTA: MEX-GTO-017

AÑO: 2015

LUGAR	ESTACION				CLASIFICACION VEHICULAR EN PORCIENTO													COORDENADAS		
	KM	TE	SC	TDPA	M	A	B	C2	C3	T3S2	T3S3	T3S2R4	OTROS	A	B	C	K'	D	LATITUD	LONGITUD
Cortazar	0.00	3	0	8051	0.2	88.2	1.1	5.1	2.3	1.6	0.9	0.4	0.2	88.4	1.1	10.5	0.080	0.504	20.473167	-100.977000
T. C. Morelia - Salamanca	29.20	1	0	5863	0.1	89.4	1.7	5.1	1.4	1.5	0.3	0.3	0.2	89.5	1.7	8.8	0.061	0.501	20.380890	-101.171910

54 CARR: Guanajuato - Los Infantes

CLAVE: 11067

RUTA: MEX-110-GTO

AÑO: 2015

LUGAR	ESTACION				CLASIFICACION VEHICULAR EN PORCIENTO													COORDENADAS		
	KM	TE	SC	TDPA	M	A	B	C2	C3	T3S2	T3S3	T3S2R4	OTROS	A	B	C	K'	D	LATITUD	LONGITUD
Guanajuato	0.00	3	1	17200	0.0	93.7	0.5	1.7	1.4	1.3	0.6	0.6	0.2	93.7	0.5	5.8	0.060	0.516	21.009373	-101.270838
Guanajuato	0.00	3	2	18353	0.0	94.4	0.4	2.7	0.5	1.2	0.4	0.3	0.1	94.4	0.4	5.2	0.075	0.516	21.009138	-101.270353
T. Izq. Juventino Rosas	4.91	1	1	22261	2.0	87.3	1.0	6.4	0.4	0.6	1.4	0.5	0.4	89.3	1.0	9.7	0.069	0.506	21.000501	-101.284088
T. Izq. Juventino Rosas	4.91	1	2	21839	2.6	86.0	1.1	6.9	0.4	0.6	1.5	0.5	0.4	88.6	1.1	10.3	0.079	0.506	21.000501	-101.284088
T. Der. Silao	12.77	1	0	17310	0.1	90.6	1.6	5.0	0.7	0.8	0.3	0.4	0.5	90.7	1.6	7.7	0.086	0.512	20.960380	-101.318970
T. C. Irapuato - León	22.00	1	0	8486	0.1	83.4	2.5	7.8	2.1	2.3	0.6	0.9	0.3	83.5	2.5	14.0	0.111	0.515	20.895583	-101.349694

55 CARR: Tepatitlán - Las Adjuntas

CLAVE: 00141

RUTA: JAL/MEX-084

AÑO: 2015

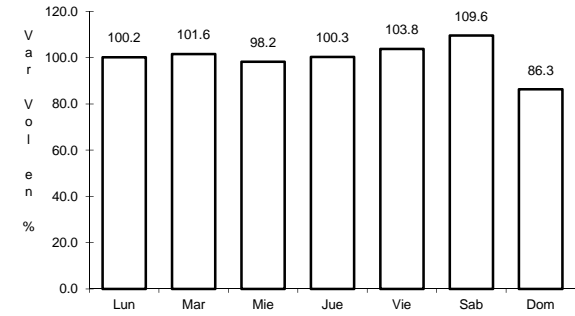
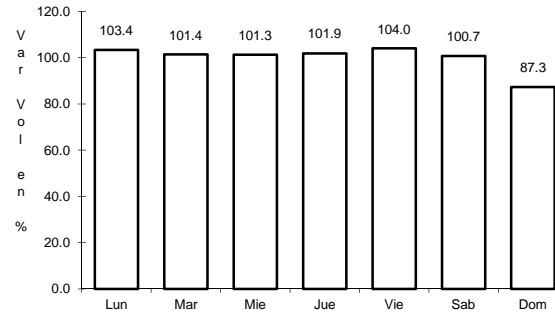
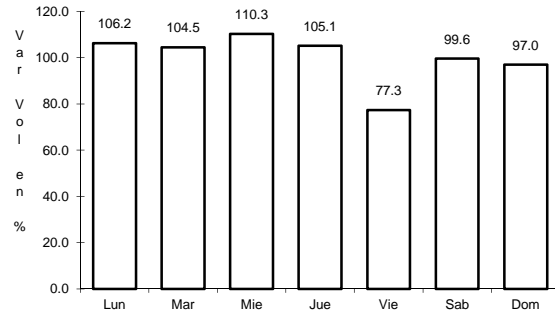
LUGAR	ESTACION				CLASIFICACION VEHICULAR EN PORCIENTO													COORDENADAS		
	KM	TE	SC	TDPA	M	A	B	C2	C3	T3S2	T3S3	T3S2R4	OTROS	A	B	C	K'	D	LATITUD	LONGITUD
T. C. Lagos de Moreno - Zapotlanejo	0.00	3	1	3899	0.8	82.6	1.3	7.0	3.4	2.3	1.9	0.4	0.3	83.4	1.3	15.3	0.078	0.500	20.883667	-102.699194
T. C. Lagos de Moreno - Zapotlanejo	0.00	3	2	3907	0.7	80.9	1.3	7.9	3.7	2.7	2.1	0.4	0.3	81.6	1.3	17.1	0.079	0.500	20.883667	-102.699194
X. C. San Miguel El Alto - La Barca	34.00	3	1	6774	1.6	82.4	1.3	8.7	2.7	1.9	1.0	0.2	0.2	84.0	1.3	14.7	0.070	0.502	20.718306	-102.441833
X. C. San Miguel El Alto - La Barca	34.00	3	2	6725	1.4	81.1	1.3	9.7	2.9	2.0	1.2	0.2	0.2	82.5	1.3	16.2	0.075	0.502	20.718306	-102.441833
Arandas	46.00	3	0	7261	1.9	79.4	1.1	8.9	3.0	3.7	1.4	0.2	0.4	81.3	1.1	17.6	0.068	0.506	20.693806	-102.294417
T. Der. Jesús María	58.00	3	0	2877	1.7	73.7	2.1	12.0	4.4	3.7	1.7	0.6	0.1	75.4	2.1	22.5	0.070	0.503	20.685389	-102.232639
X. C. Manuel Doblado - La Piedad	91.00	1	0	1451	0.9	76.4	2.7	9.3	3.0	4.5	2.2	0.9	0.1	77.3	2.7	20.0	0.079	0.510	20.621480	-101.991060
Lim. Edos. Term. Jal. Ppia. Gto.	95.00																			
T. C. Munguía - Las Adjuntas	100.00	1	0	1528	0.6	79.2	4.0	8.3	2.2	3.6	1.5	0.4	0.2	79.8	4.0	16.2	0.109	0.534	20.653310	-101.886660



1 CARR: Acámbaro - Celaya

CLAVE: 11066

RUTA: MEX-051



Km: 13.50                      Tipo: 1                      Sent: 0

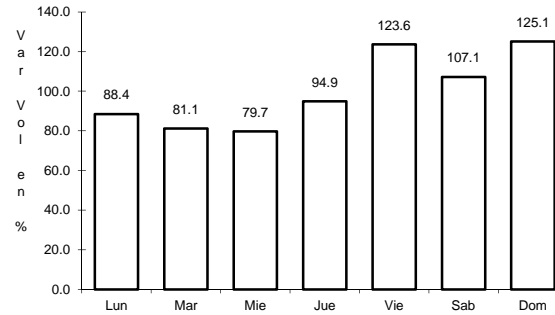
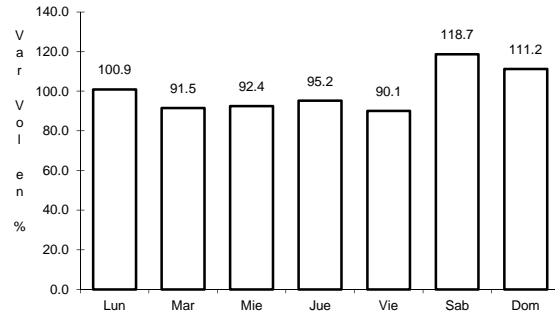
Km: 69.70                      Tipo: 1                      Sent: 1

Km: 69.70                      Tipo: 1                      Sent: 2

2 CARR: Acámbaro - Zinapécuaro

CLAVE: 00417

RUTA: MEX-120



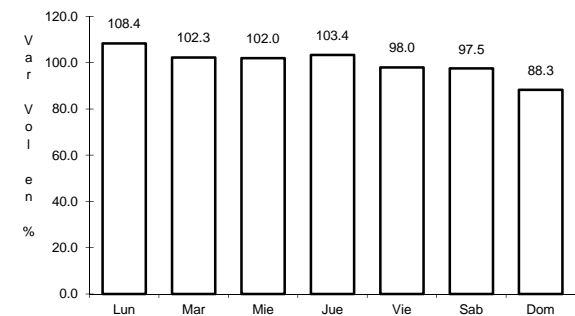
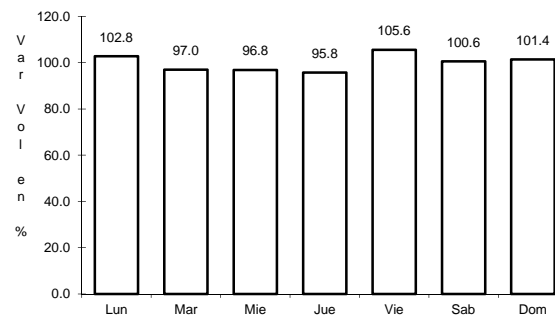
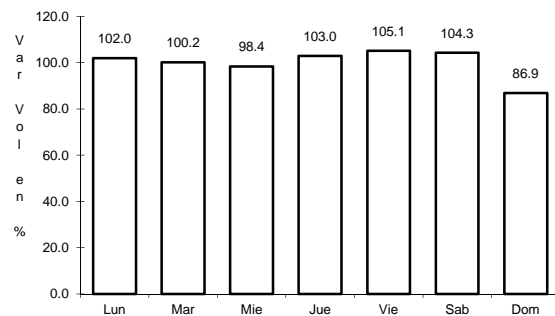
Km: 0.00                      Tipo: 3                      Sent: 0

Km: 25.00                      Tipo: 1                      Sent: 0

3 CARR: Dolores Hidalgo - Ojuelos de Jalisco

CLAVE: 00107

RUTA: MEX-051



Km: 0.00                      Tipo: 3                      Sent: 0

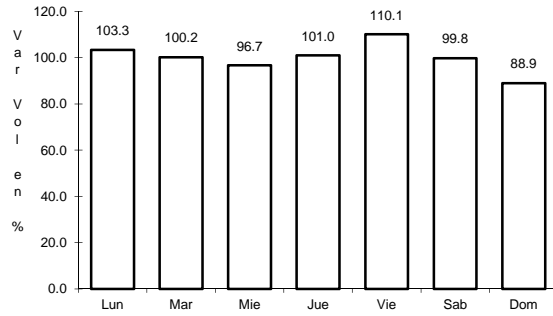
Km: 51.38                      Tipo: 1                      Sent: 0

Km: 113.49                      Tipo: 1                      Sent: 0

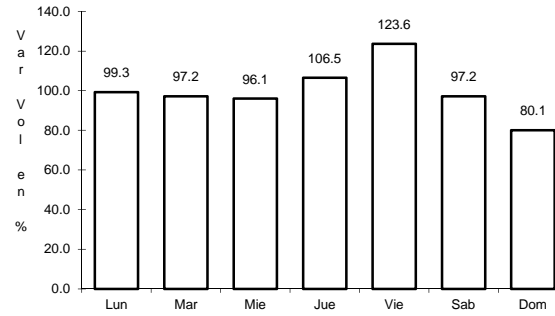
4 CARR: Ent. Buenavista - San Miguel de Allende

CLAVE: 00111

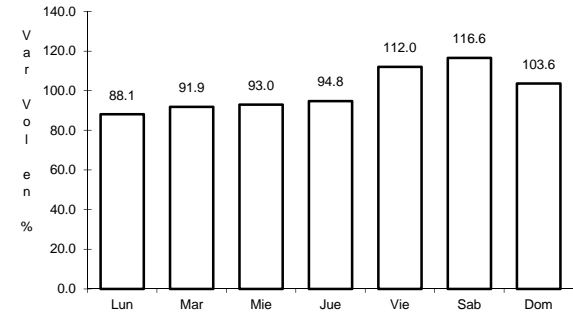
RUTA: MEX-057



Km: 0.00                      Tipo: 3                      Sent: 0



Km: 12.00                      Tipo: 1                      Sent: 0

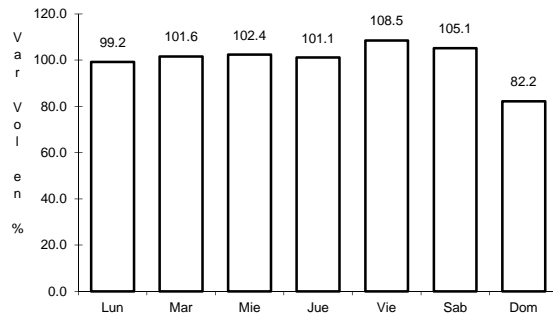


Km: 35.11                      Tipo: 1                      Sent: 0

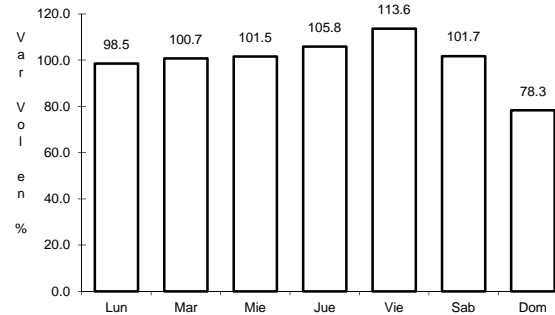
5 CARR: Ent. de Zaragoza - San Felipe

CLAVE: 00240

RUTA: MEX-037



Km: 0.00                      Tipo: 3                      Sent: 0

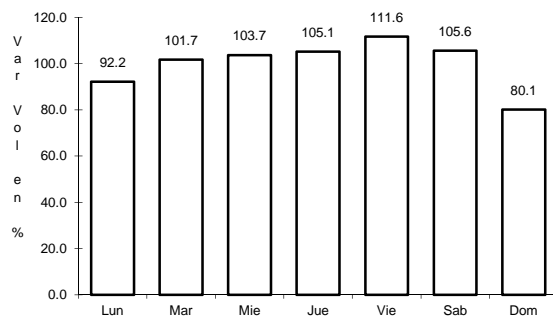


Km: 72.00                      Tipo: 1                      Sent: 0

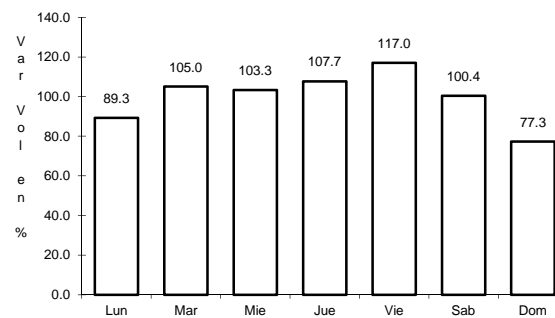
6 CARR: Ent. La Fortaleza - Cortázar

CLAVE: 11017

RUTA: MEX-045



Km: 0.00                      Tipo: 3                      Sent: 1

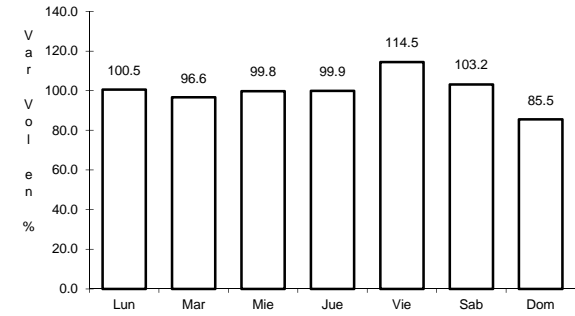
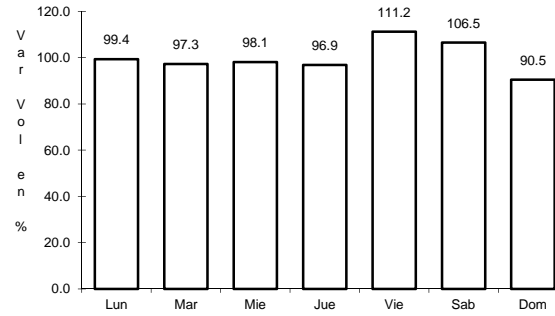
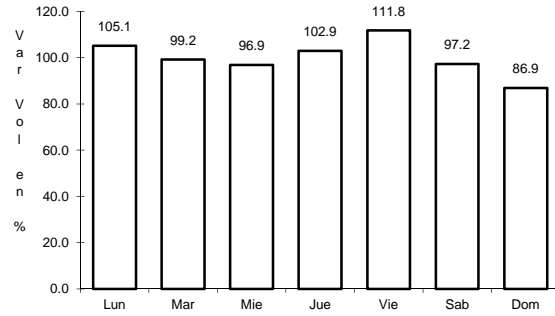


Km: 0.00                      Tipo: 3                      Sent: 2

7 CARR: Ent. Santa Teresa - Silao

CLAVE: 11070

RUTA: MEX-110



Km: 0.00                      Tipo: 3                      Sent: 0

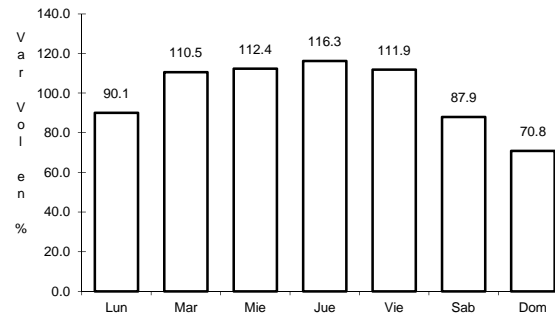
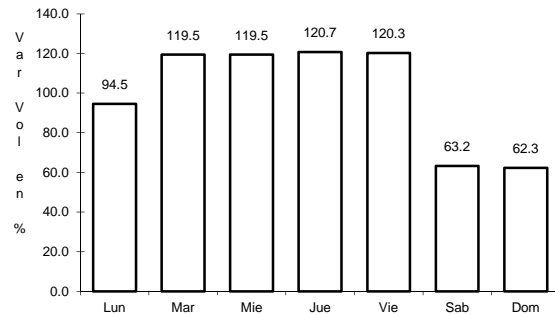
Km: 12.00                      Tipo: 1                      Sent: 1

Km: 12.00                      Tipo: 1                      Sent: 2

8 CARR: Irapuato - León

CLAVE: 11123

RUTA: MEX-045



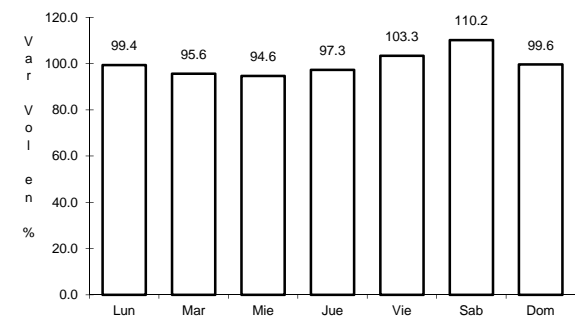
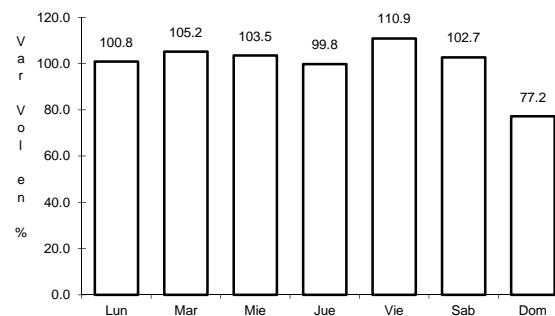
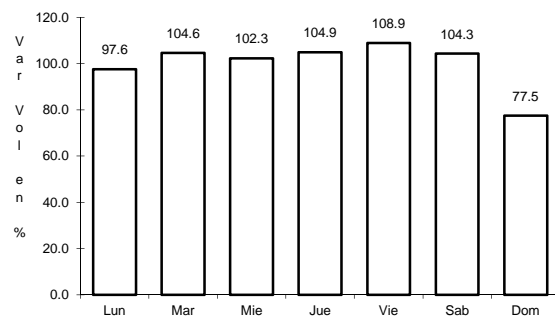
Km: 7.88                      Tipo: 3                      Sent: 1

Km: 7.88                      Tipo: 3                      Sent: 2

9 CARR: Irapuato - Zapotlanejo

CLAVE: 00114

RUTA: MEX-090



Km: 2.78                      Tipo: 1                      Sent: 1

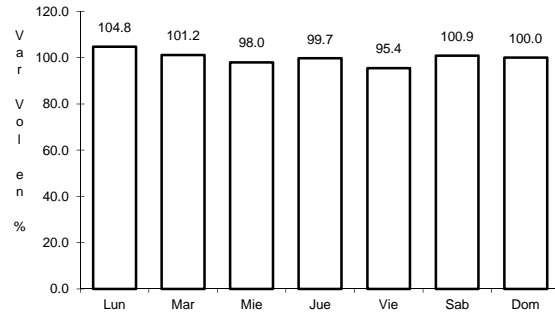
Km: 2.78                      Tipo: 1                      Sent: 2

Km: 215.80                      Tipo: 1                      Sent: 0

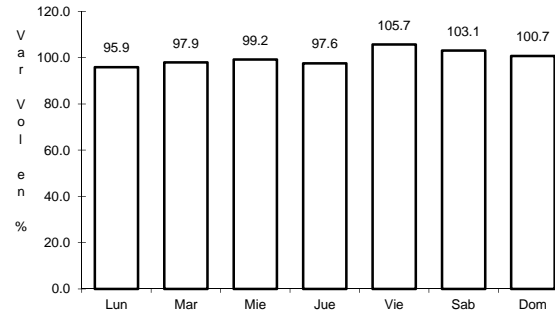
10 CARR: La Noria - Acámbaro

CLAVE: 00131

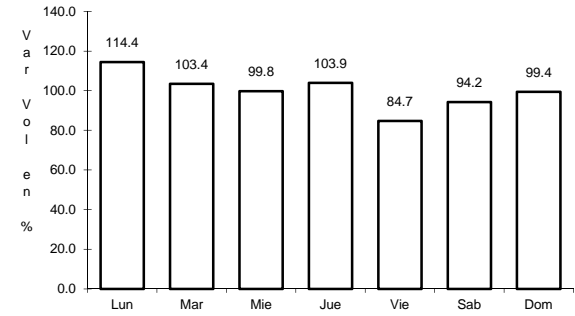
RUTA: MEX-120



Km: 0.00                      Tipo: 3                      Sent: 0



Km: 59.35                      Tipo: 3                      Sent: 0

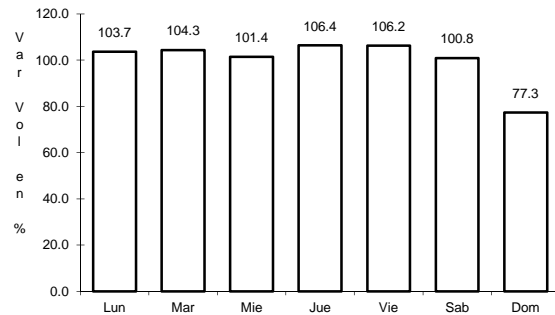


Km: 111.12                      Tipo: 1                      Sent: 0

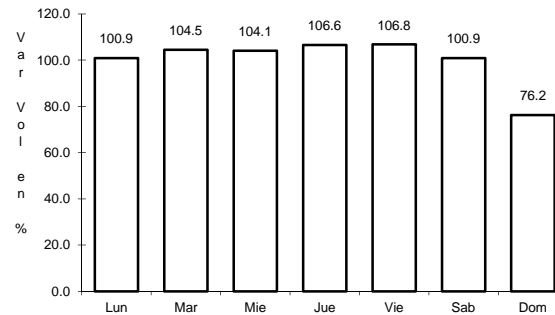
11 CARR: León - Aguascalientes

CLAVE: 00167

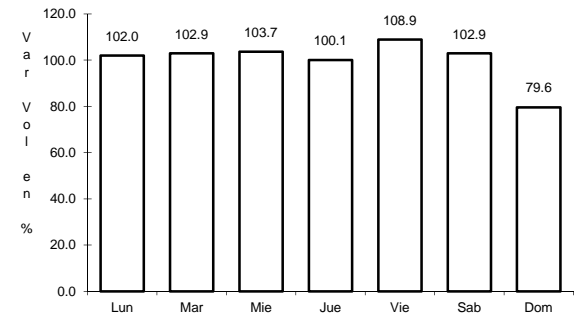
RUTA: MEX-045



Km: 11.00                      Tipo: 1                      Sent: 1



Km: 11.00                      Tipo: 1                      Sent: 2

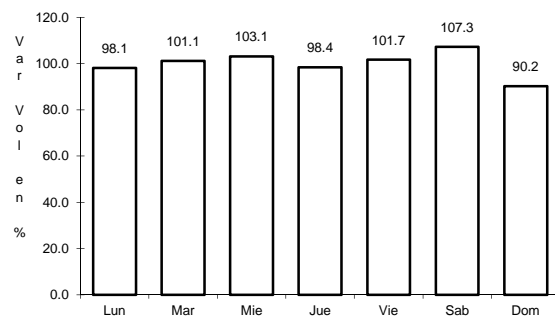


Km: 88.20                      Tipo: 1                      Sent: 0

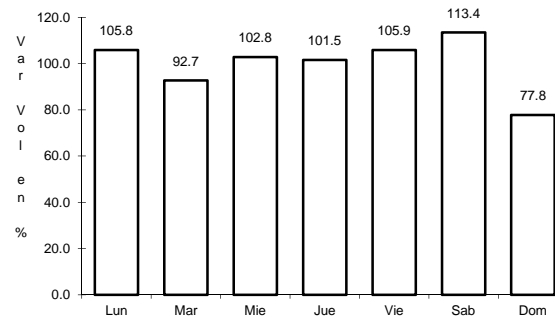
12 CARR: Manuel Doblado - La Piedad

CLAVE: 11028

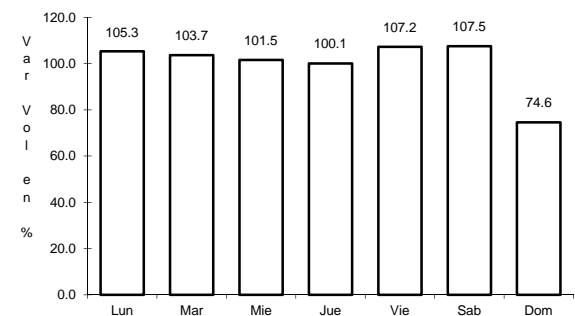
RUTA: MEX-084



Km: 0.00                      Tipo: 3                      Sent: 0



Km: 29.00                      Tipo: 1                      Sent: 0

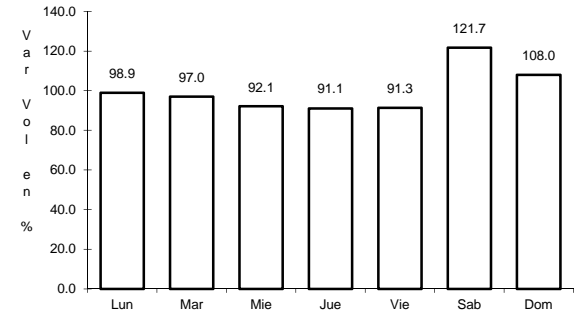
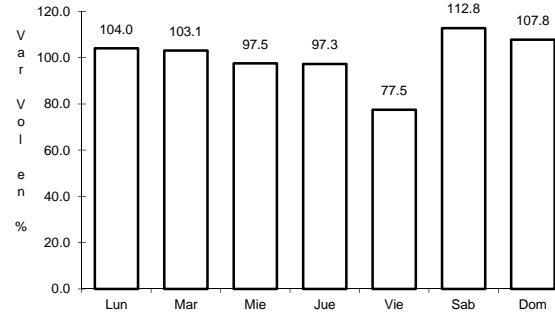
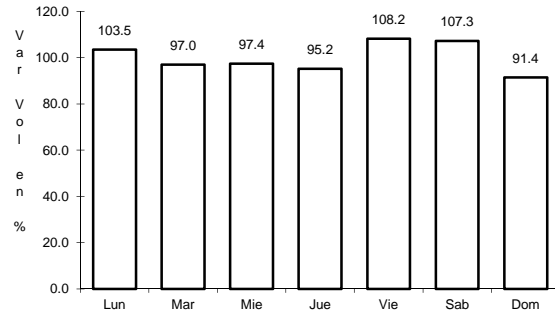


Km: 45.00                      Tipo: 1                      Sent: 0

13 CARR: Maravatío - Acámbaro

CLAVE: 00418

RUTA: MEX-061



Km: 0.00      Tipo: 3      Sent: 0

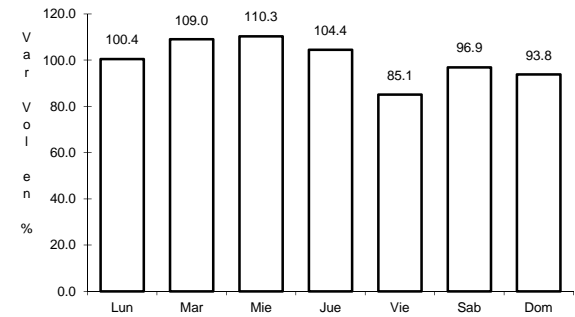
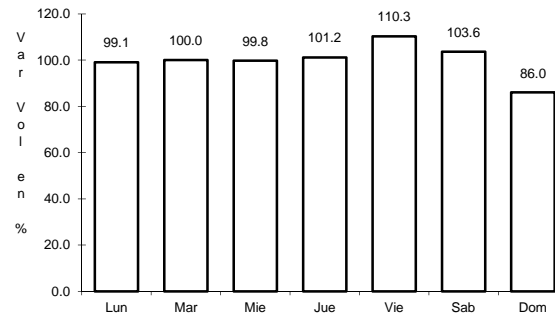
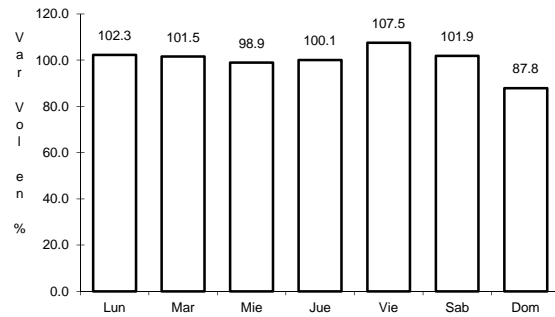
Km: 13.00      Tipo: 3      Sent: 0

Km: 39.00      Tipo: 1      Sent: 0

14 CARR: Morelia - Salamanca

CLAVE: 00124

RUTA: MEX-043



Km: 2.70      Tipo: 3      Sent: 1

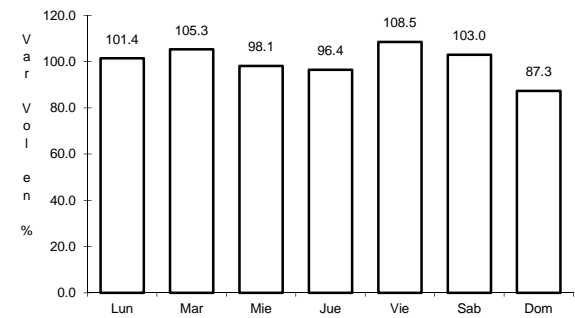
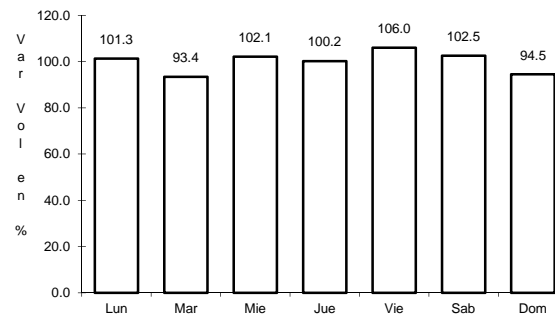
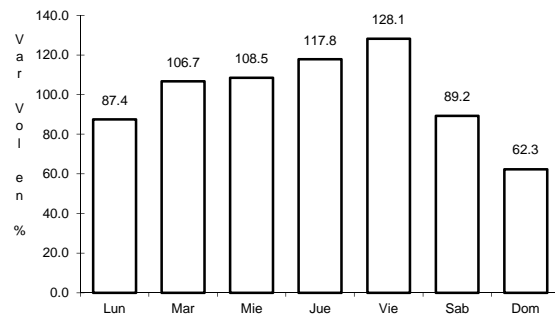
Km: 2.70      Tipo: 3      Sent: 2

Km: 61.36      Tipo: 3      Sent: 0

15 CARR: Munguía - Las Adjuntas

CLAVE: 11815

RUTA: MEX-084



Km: 0.00      Tipo: 3      Sent: 0

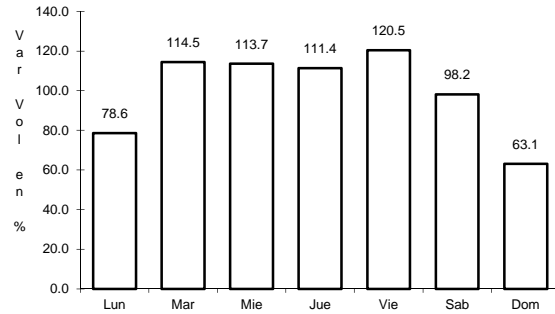
Km: 27.00      Tipo: 3      Sent: 0

Km: 57.00      Tipo: 1      Sent: 0

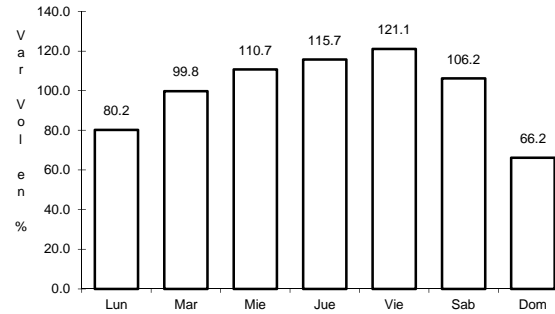
16 CARR: Nuevo Libramiento de Irapuato

CLAVE: 11132

RUTA: MEX-045



Km: 0.00                      Tipo: 3                      Sent: 1

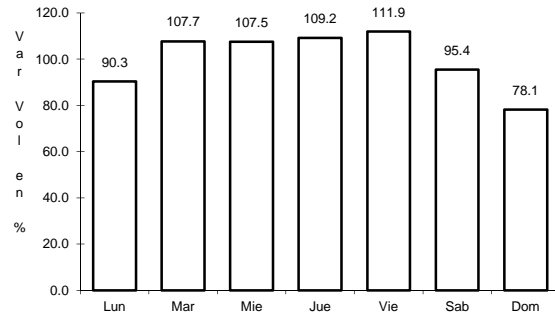


Km: 0.00                      Tipo: 3                      Sent: 2

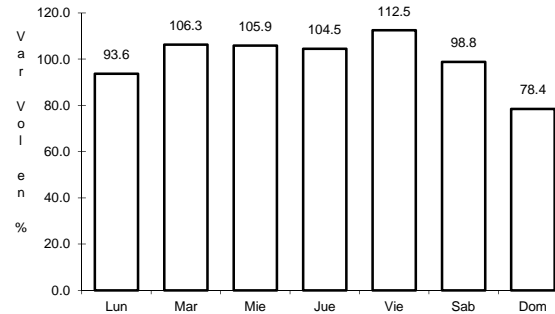
17 CARR: Querétaro - Irapuato (Libre)

CLAVE: 00154

RUTA: MEX-045



Km: 0.00                      Tipo: 3                      Sent: 1

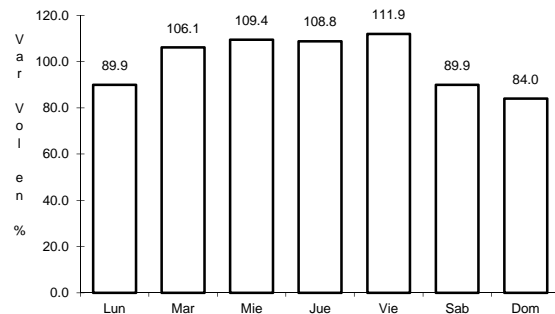


Km: 0.00                      Tipo: 3                      Sent: 2

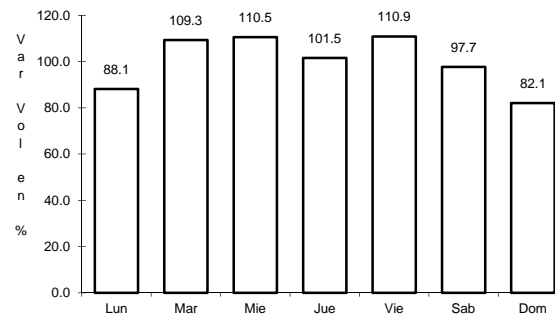
18 CARR: Querétaro - San Luis Potosí

CLAVE: 00165

RUTA: MEX-057



Km: 6.28                      Tipo: 3                      Sent: 1

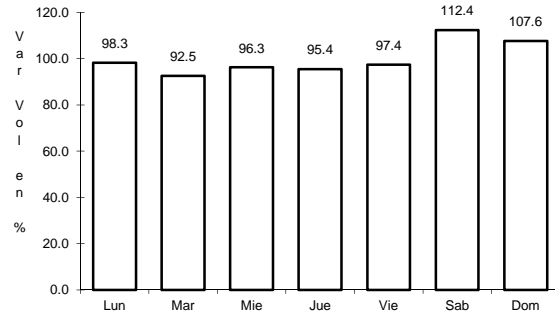


Km: 6.28                      Tipo: 3                      Sent: 2

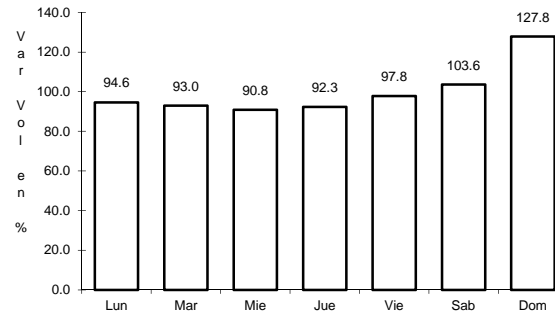
19 CARR: Ramal a Las Adjuntas

CLAVE: 11820

RUTA: MEX-084



Km: 0.00                      Tipo: 3                      Sent: 0

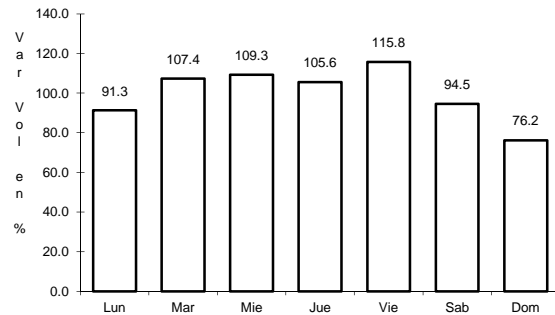


Km: 10.00                      Tipo: 1                      Sent: 0

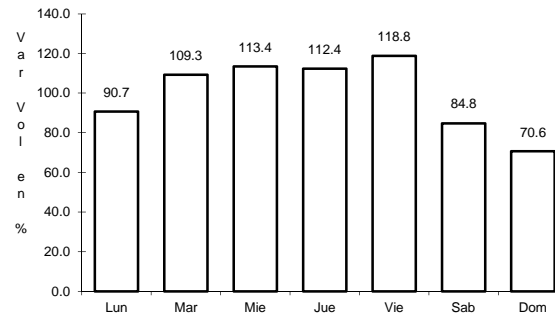
20 CARR: Ramal a San José Iturbide

CLAVE: 11201

RUTA: MEX-057



Km: 0.00                      Tipo: 3                      Sent: 1

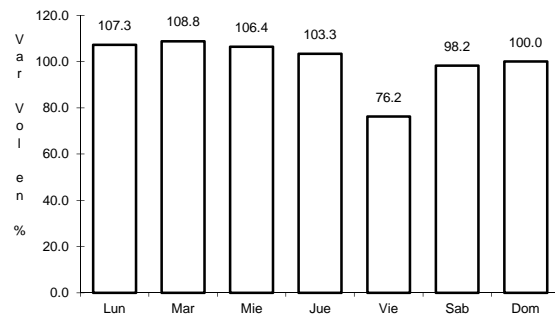


Km: 0.00                      Tipo: 3                      Sent: 2

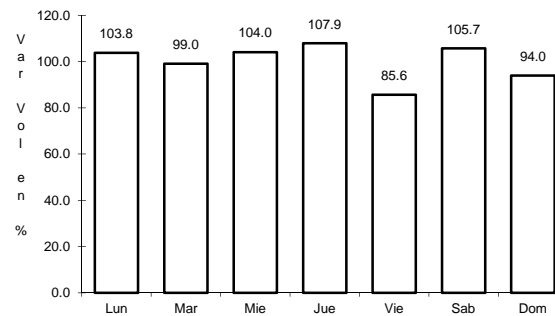
21 CARR: Salvatierra - Ent. Yuriria

CLAVE: 11013

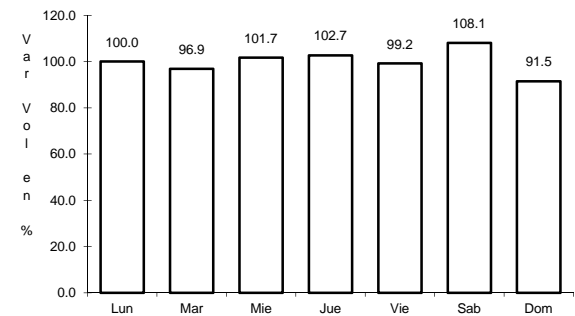
RUTA: MEX-043



Km: 0.00                      Tipo: 3                      Sent: 0



Km: 30.00                      Tipo: 1                      Sent: 1

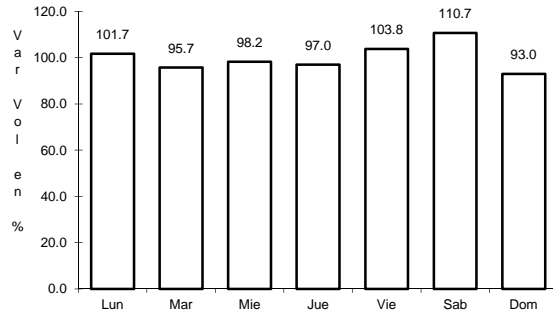


Km: 30.00                      Tipo: 1                      Sent: 2

22 CARR: San Luis de La Paz - Cañada de Moreno

CLAVE: 11134

ruta: MEX-110

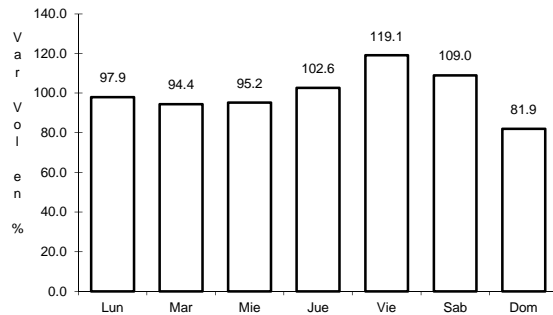


Km: 0.00      Tipo: 3      Sent: 0

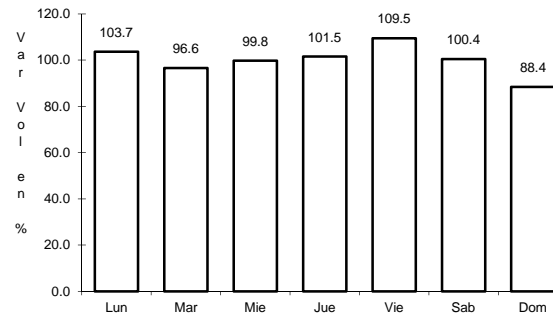
23 CARR: San Luis de La Paz - Guanajuato

CLAVE: 11108

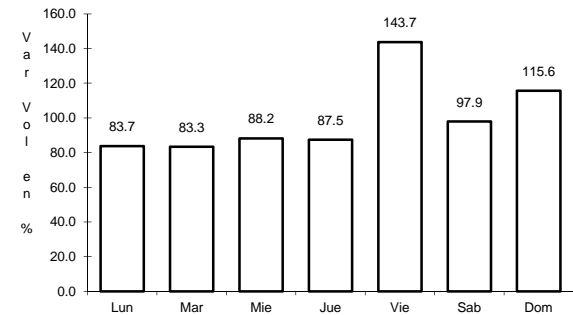
ruta: MEX-110



Km: 1.74      Tipo: 3      Sent: 1



Km: 1.74      Tipo: 3      Sent: 2

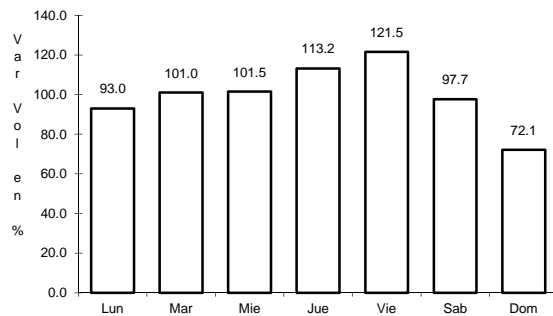


Km: 103.29      Tipo: 1      Sent: 0

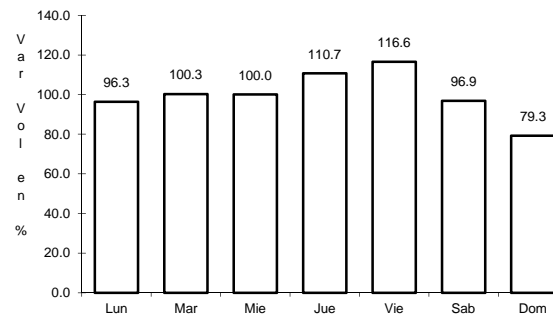
24 CARR: León - Aguascalientes (Cuota)

CLAVE: 00013

ruta: MEX-045D



Km: 0.00      Tipo: 3      Sent: 1



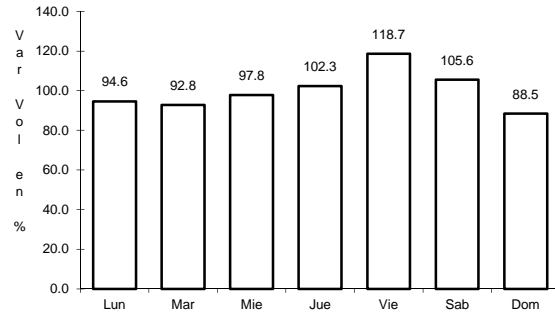
Km: 0.00      Tipo: 3      Sent: 2



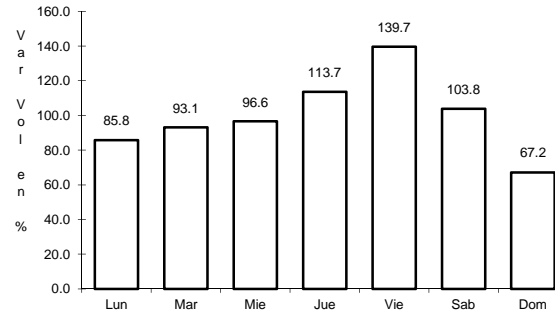
25 CARR: Libramiento Norponiente de Irapuato (Cuota)

CLAVE: 11014

RUTA: MEX-IRA 020D



Km: 0.00                      Tipo: 3                      Sent: 0

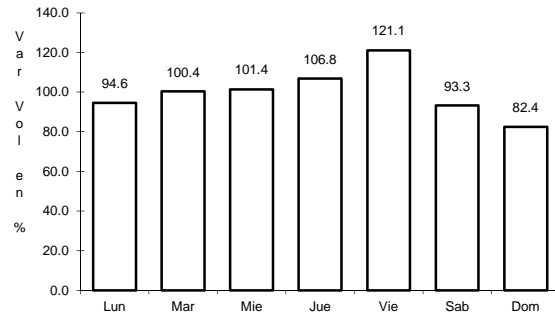


Km: 29.00                      Tipo: 1                      Sent: 0

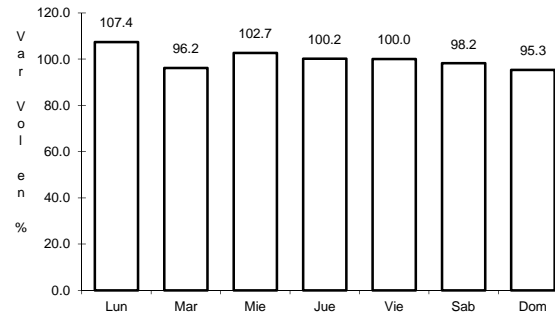
26 CARR: Libramiento Norte de la Piedad (Cuota)

CLAVE:

RUTA: MEX-110D



Km: 76.50                      Tipo: 3                      Sent: 1

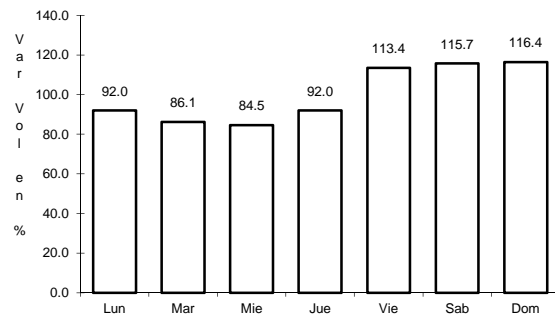


Km: 76.50                      Tipo: 3                      Sent: 2

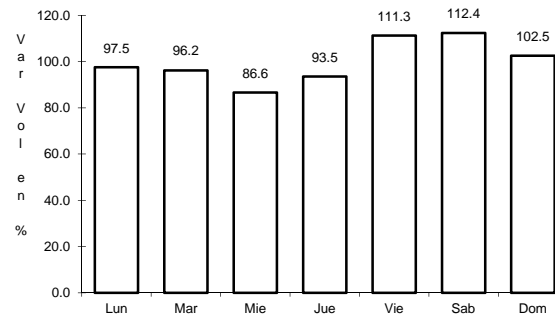
27 CARR: Morelia - Salamanca (Cuota)

CLAVE: 00124

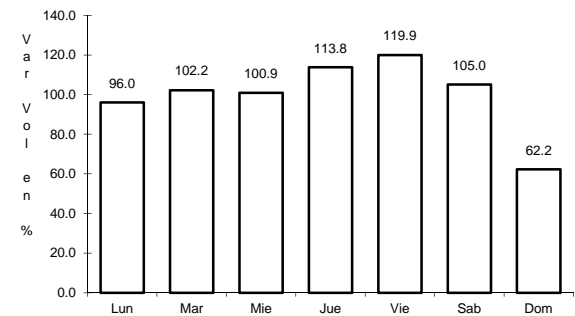
RUTA: MEX-043D



Km: 0.00                      Tipo: 3                      Sent: 0



Km: 77.09                      Tipo: 1                      Sent: 0

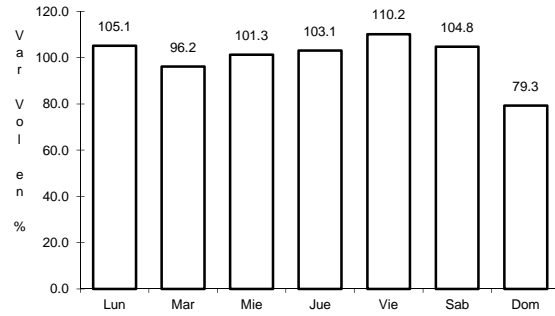


Km: 81.94                      Tipo: 1                      Sent: 0

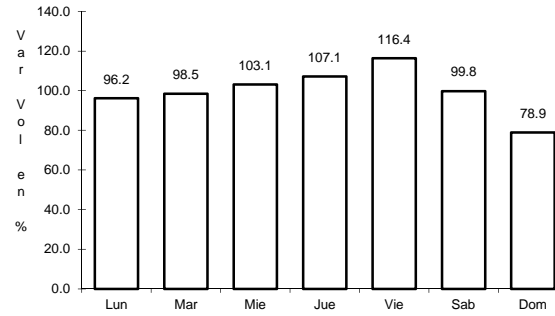
28 CARR: Querétaro - Irapuato (Cuota)

CLAVE: 00423

RUTA: MEX-045D



Km: 0.00                      Tipo: 3                      Sent: 1

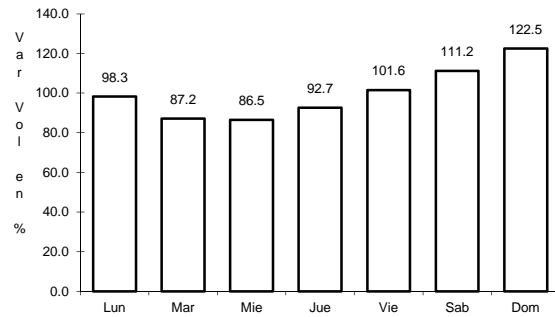


Km: 0.00                      Tipo: 3                      Sent: 2

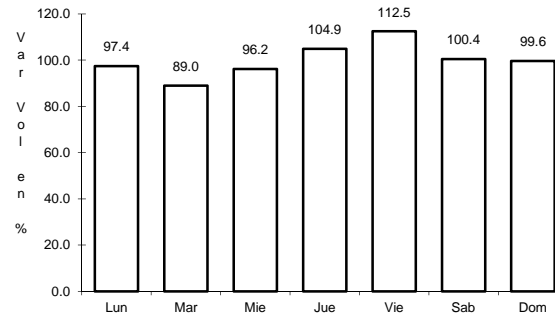
29 CARR: Ent. Begoña - Ent. Presa de Manantiales

CLAVE: 11812

RUTA: GTO



Km: 0.00                      Tipo: 3                      Sent: 0

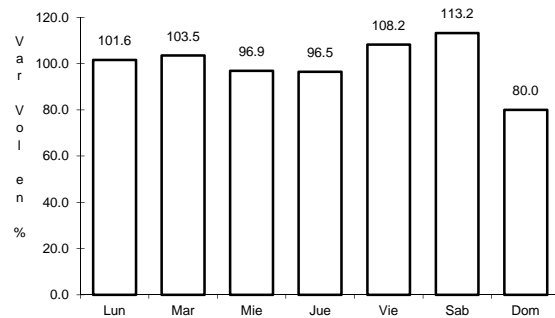


Km: 37.00                      Tipo: 1                      Sent: 0

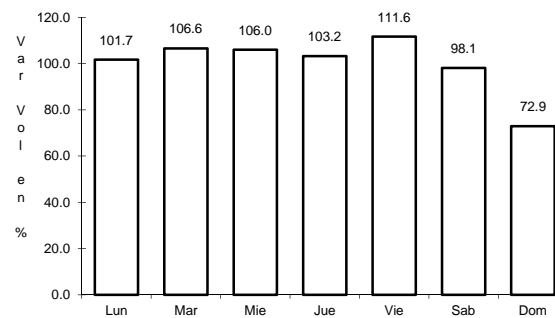
30 CARR: Ent. San Miguel de Allende - Dr. Mora

CLAVE: 11001

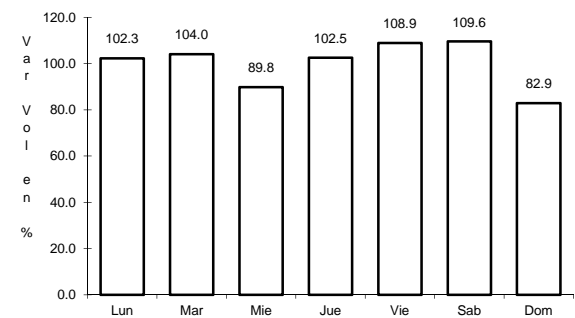
RUTA: GTO-001



Km: 0.00                      Tipo: 3                      Sent: 0



Km: 32.00                      Tipo: 1                      Sent: 0

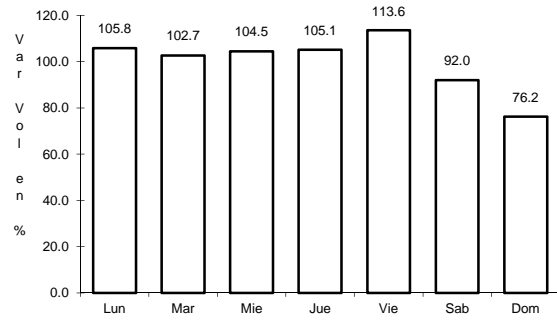


Km: 38.00                      Tipo: 3                      Sent: 0

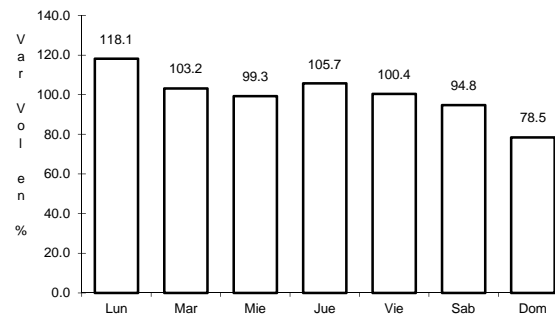
31 CARR: Guanajuato - Santa Rita

CLAVE: 11810

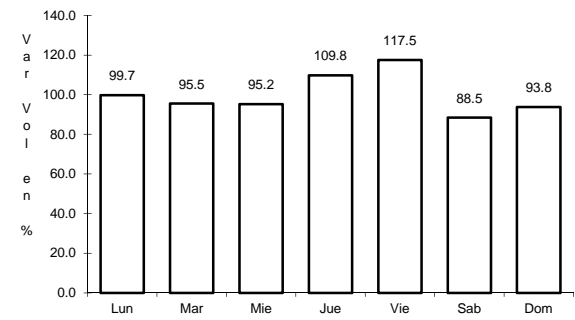
RUTA: GTO



Km: 0.00                      Tipo: 3                      Sent: 1



Km: 0.00                      Tipo: 3                      Sent: 2

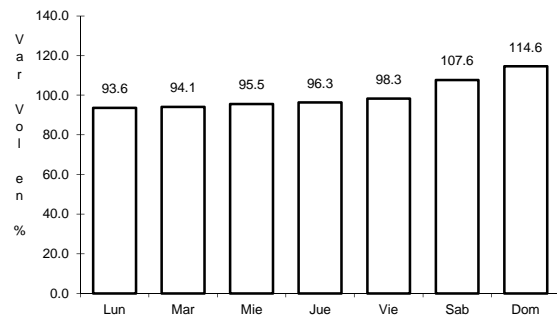


Km: 35.45                      Tipo: 3                      Sent: 0

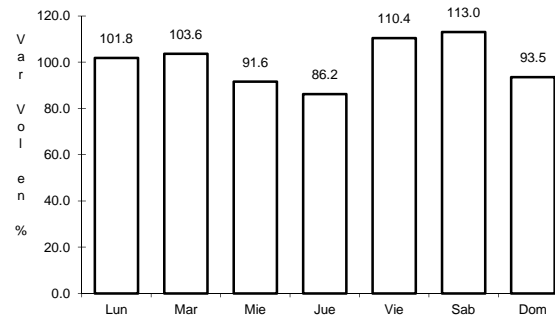
32 CARR: Jalostotitlán - Purísima de Bustos

CLAVE: 00142

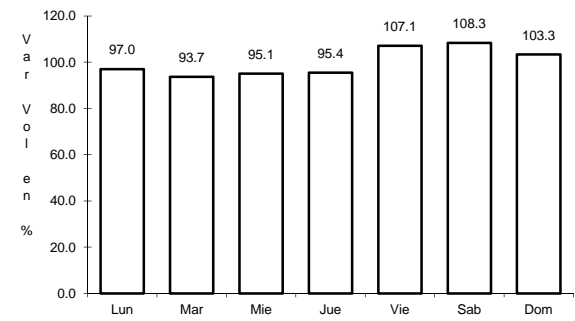
RUTA: JAL-GTO



Km: 0.00                      Tipo: 3                      Sent: 0



Km: 63.00                      Tipo: 3                      Sent: 0

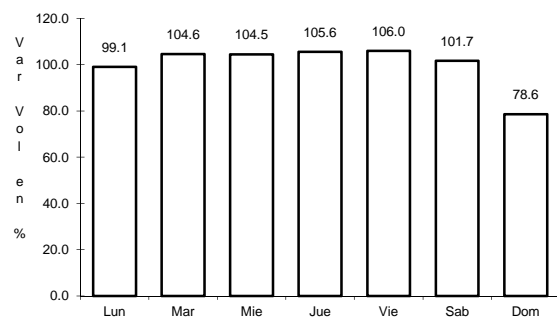


Km: 78.00                      Tipo: 1                      Sent: 0

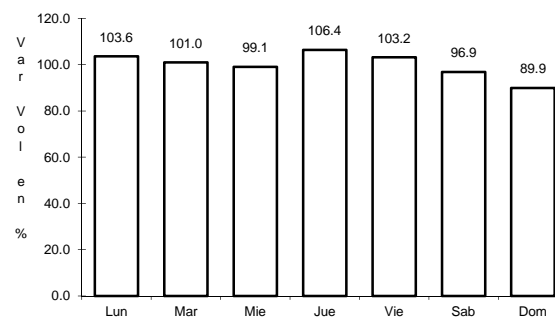
33 CARR: León - Manuel Doblado

CLAVE: 11069

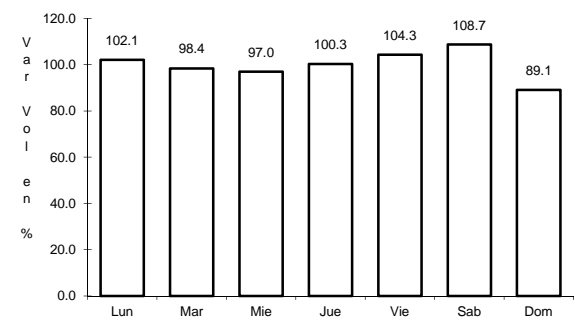
RUTA: GTO-037



Km: 0.00                      Tipo: 3                      Sent: 1



Km: 0.00                      Tipo: 3                      Sent: 2

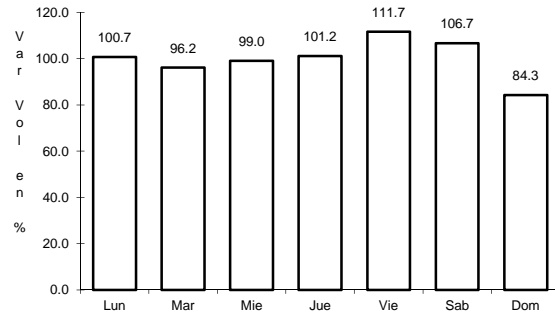


Km: 68.00                      Tipo: 1                      Sent: 0

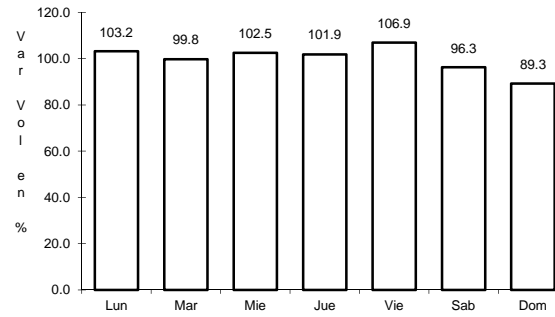
34 CARR: León - San Felipe Torres Mochas

CLAVE: 11036

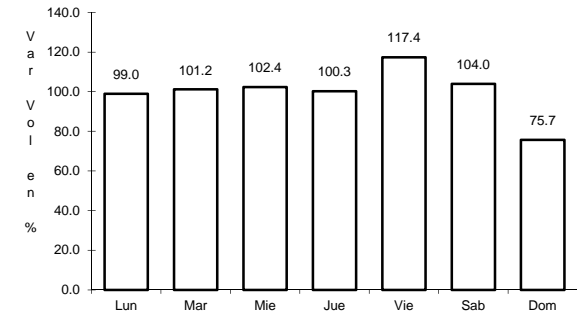
RUTA: GTO



Km: 0.00                      Tipo: 3                      Sent: 1



Km: 0.00                      Tipo: 3                      Sent: 2

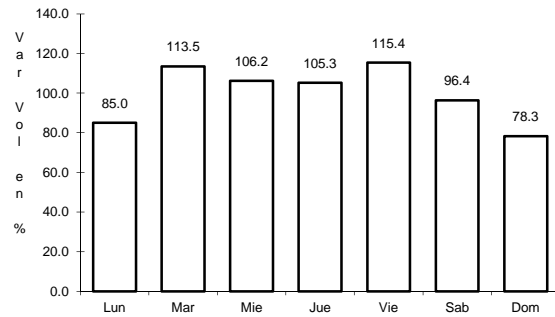


Km: 98.00                      Tipo: 1                      Sent: 0

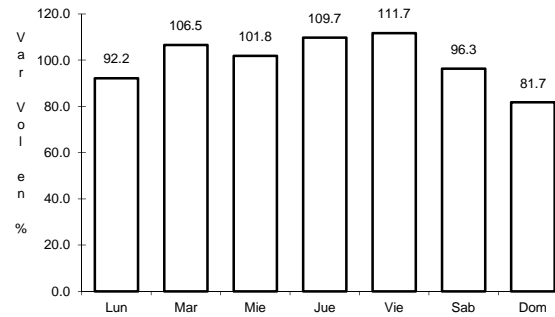
35 CARR: Libramiento de Abasolo

CLAVE: 11011

RUTA: GTO



Km: 0.00                      Tipo: 3                      Sent: 1

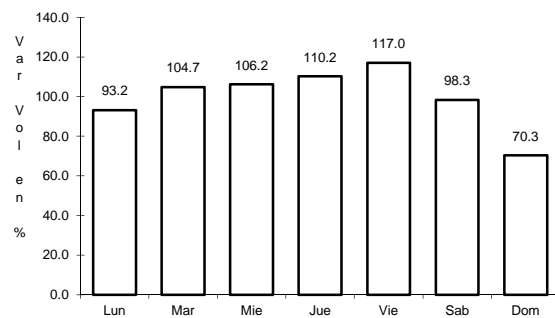


Km: 0.00                      Tipo: 3                      Sent: 2

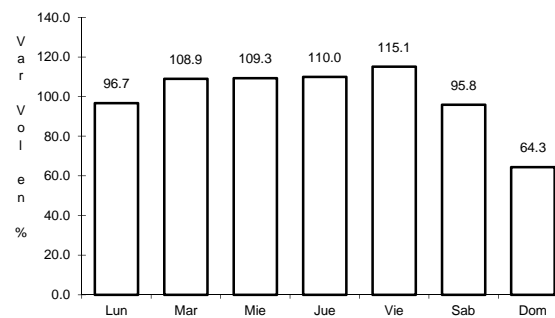
36 CARR: Libramiento de Salamanca

CLAVE: 11002

RUTA: GTO



Km: 0.00                      Tipo: 3                      Sent: 1

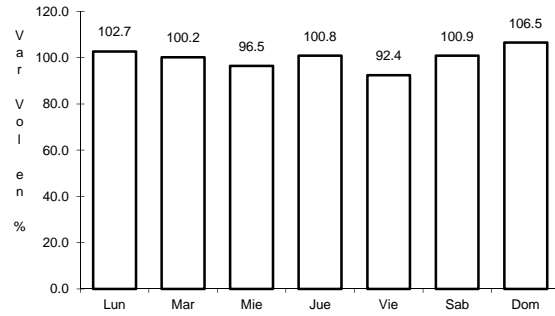


Km: 0.00                      Tipo: 3                      Sent: 2

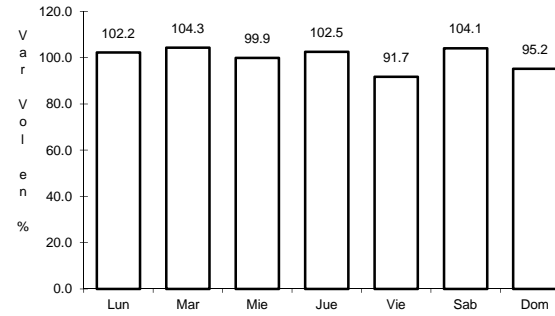
37 CARR: Libramiento de Salvatierra

CLAVE: 11012

RUTA: GTO



Km: 2.50                      Tipo: 3                      Sent: 1

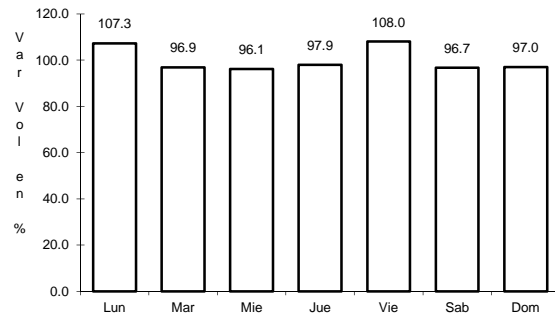


Km: 2.50                      Tipo: 3                      Sent: 2

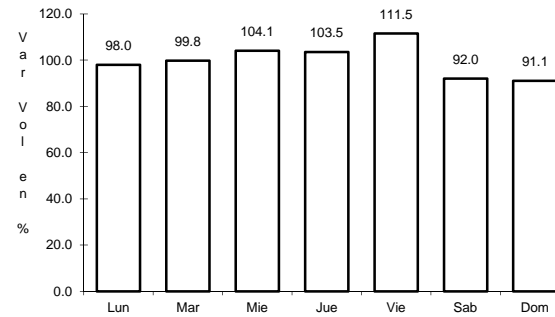
38 CARR: Libramiento de San Felipe Torres Mochas

CLAVE: 11012

RUTA: GTO



Km: 0.00                      Tipo: 3                      Sent: 0

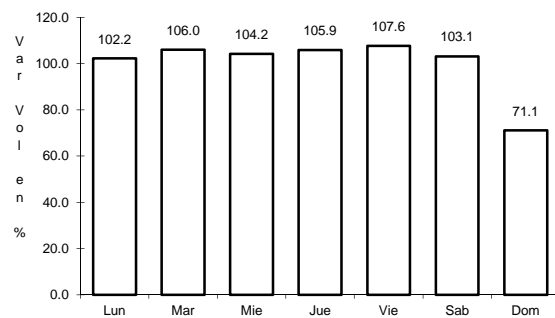


Km: 10.00                      Tipo: 1                      Sent: 0

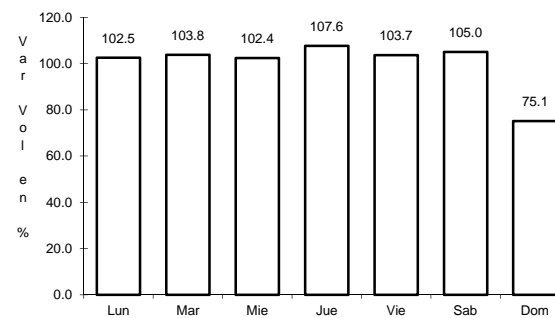
39 CARR: Libramiento de San Luis de La Paz

CLAVE: 11014

RUTA: GTO



Km: 0.00                      Tipo: 3                      Sent: 1

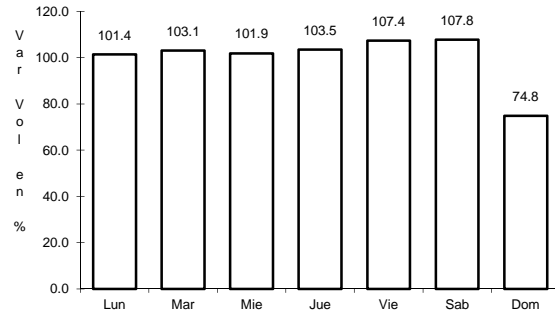


Km: 0.00                      Tipo: 3                      Sent: 2

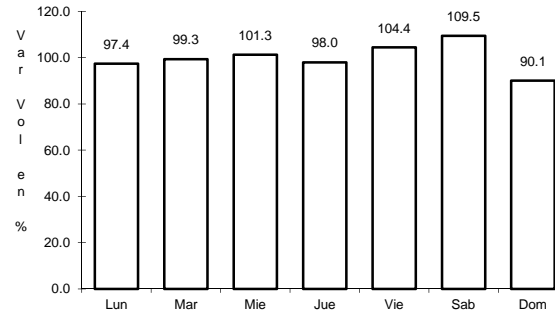
40 CARR: Manuel Doblado - Plan de Ayala

CLAVE: 11028

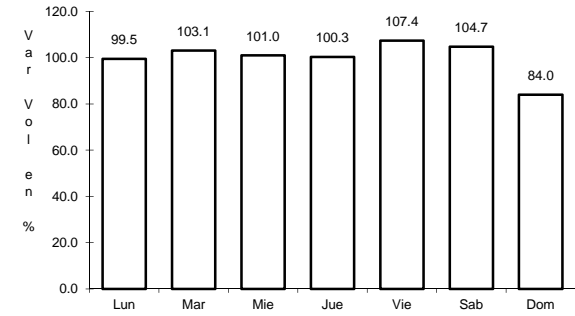
RUTA: GTO



Km: 0.00                      Tipo: 3                      Sent: 0



Km: 31.49                      Tipo: 1                      Sent: 0

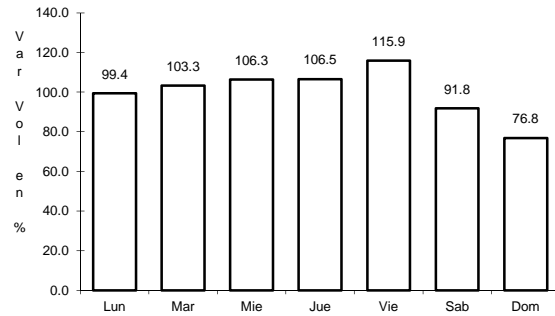


Km: 48.35                      Tipo: 1                      Sent: 0

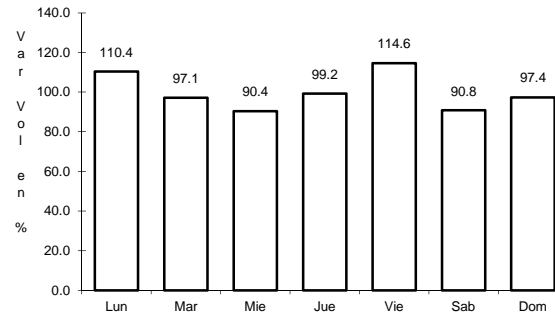
41 CARR: Nuevo Libramiento de León

CLAVE: 11133

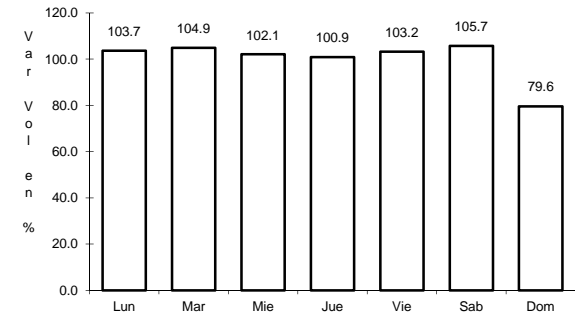
RUTA: GTO



Km: 0.00                      Tipo: 3                      Sent: 1



Km: 0.00                      Tipo: 3                      Sent: 2

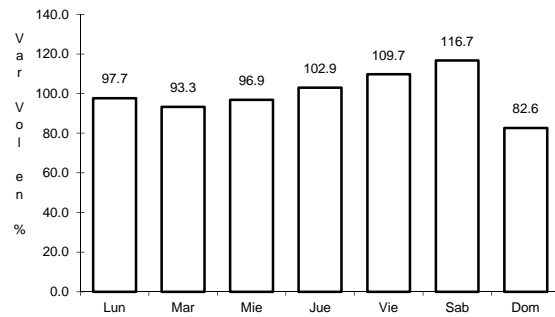


Km: 18.39                      Tipo: 1                      Sent: 0

42 CARR: Ramal a San Diego de La Unión

CLAVE: 11818

RUTA: GTO

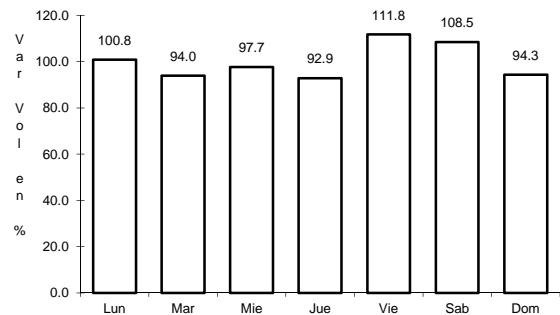


Km: 0.00                      Tipo: 3                      Sent: 0

43 CARR: Romita - El Saucillo

CLAVE: 11201

RUTA: GTO



Km: 35.50

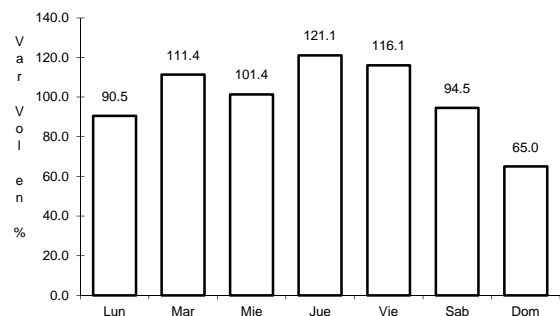
Tipo: 1

Sent: 0

44 CARR: Salamanca - Juventino Rosas

CLAVE: 11817

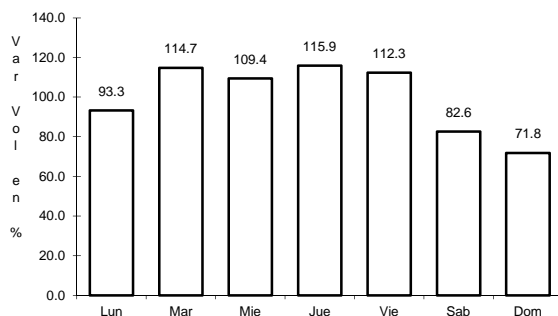
RUTA: GTO



Km: 0.00

Tipo: 3

Sent: 0



Km: 20.00

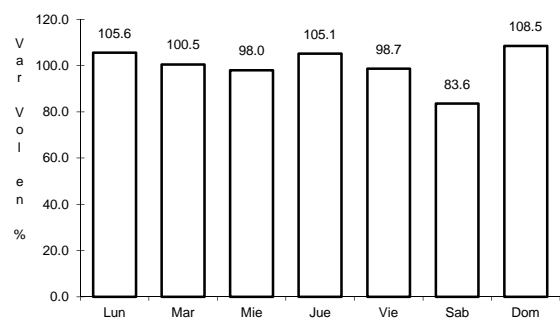
Tipo: 1

Sent: 0

45 CARR: Salvatierra - Cortázar

CLAVE: 11327

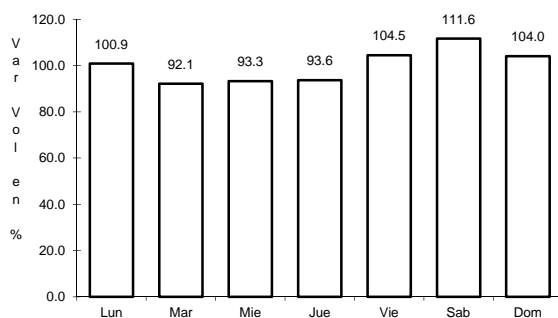
RUTA: GTO



Km: 0.00

Tipo: 3

Sent: 0



Km: 31.80

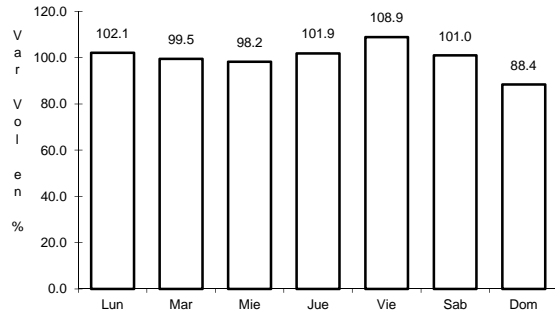
Tipo: 1

Sent: 0

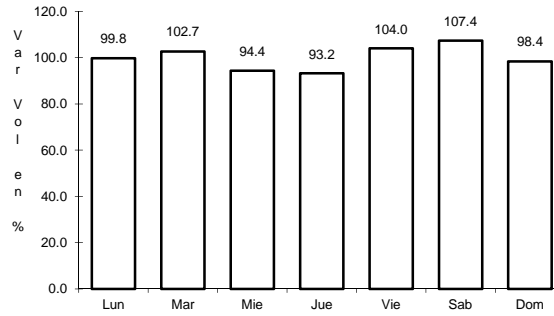
46 CARR: San Luis de La Paz - San José Iturbide

CLAVE: 11046

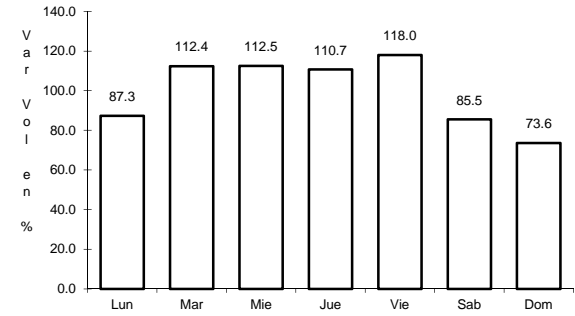
RUTA: GTO



Km: 0.00                      Tipo: 3                      Sent: 0



Km: 21.50                      Tipo: 1                      Sent: 0

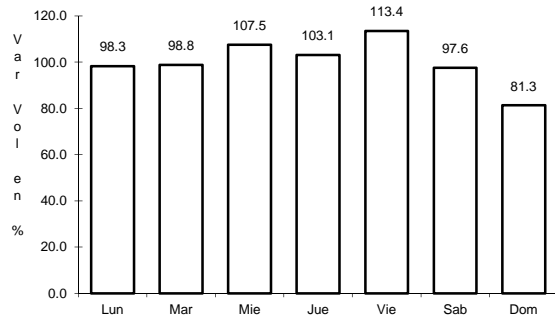


Km: 36.50                      Tipo: 1                      Sent: 0

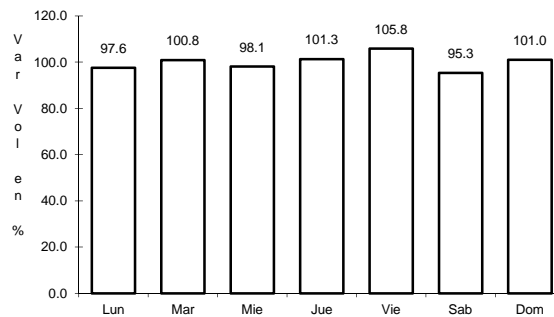
47 CARR: Silao - La Romita

CLAVE: 11029

RUTA: GTO



Km: 0.00                      Tipo: 3                      Sent: 1

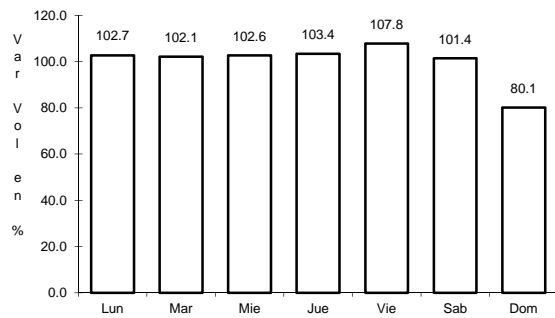


Km: 0.00                      Tipo: 3                      Sent: 2

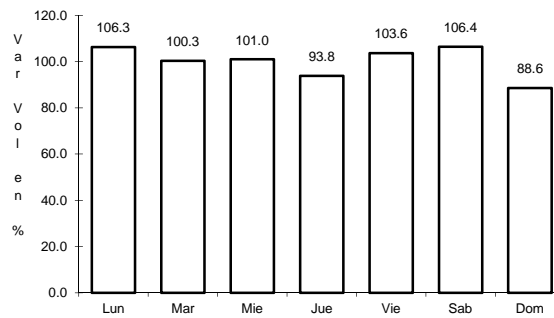
48 CARR: Silao - Los Arrastres

CLAVE: 11029

RUTA: GTO



Km: 0.00                      Tipo: 3                      Sent: 0



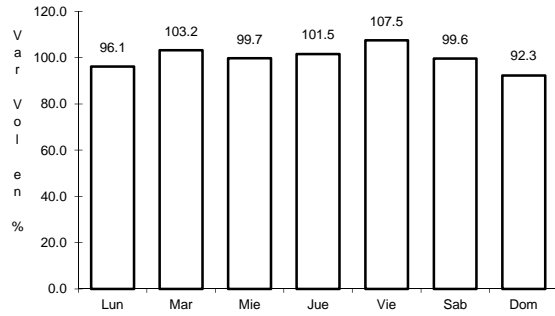
Km: 49.50                      Tipo: 1                      Sent: 0



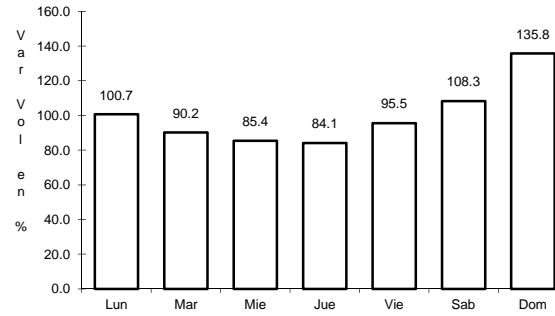
49 CARR: T. C. (Villa del Pueblito - Huimilpan) - Coroneo

CLAVE: 00155

RUTA: QRO-GTO



Km: 0.00                      Tipo: 3                      Sent: 0

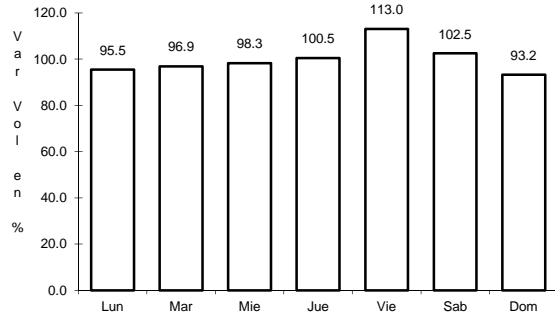


Km: 45.20                      Tipo: 1                      Sent: 0

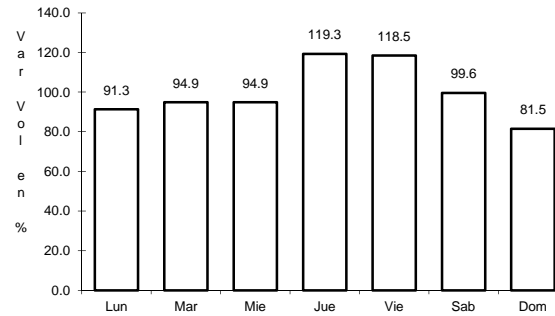
50 CARR: Guanajuato - Silao (Cuota)

CLAVE: 11810

RUTA: GTO-110D



Km: 3.76                      Tipo: 1                      Sent: 1

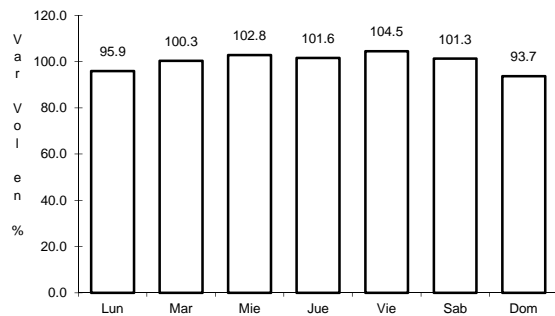


Km: 3.76                      Tipo: 1                      Sent: 2

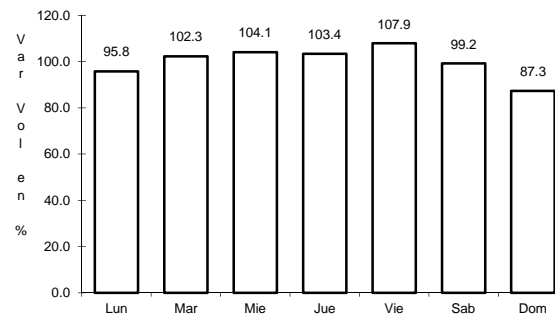
51 CARR: Libramiento de Celaya (Cuota)

CLAVE: 11011

RUTA: GTO-D



Km: 0.00                      Tipo: 3                      Sent: 1

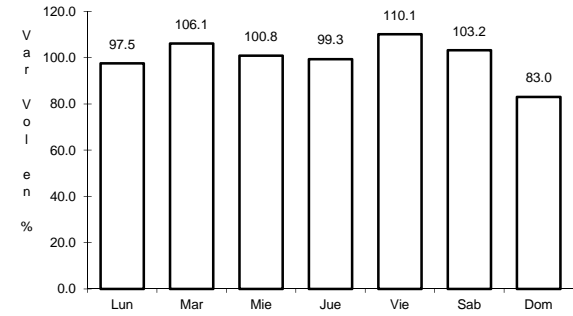
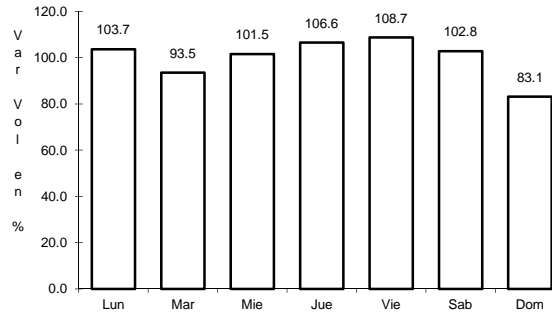
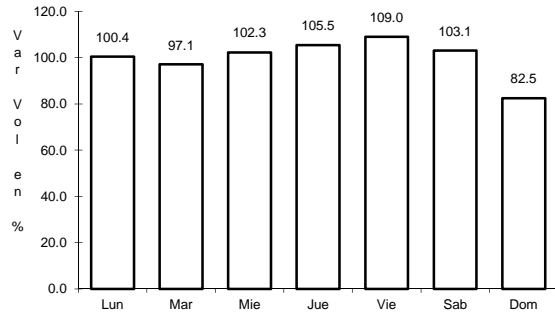


Km: 0.00                      Tipo: 3                      Sent: 2

52 CARR: Celaya - Dolores Hidalgo

CLAVE: 11109

RUTA: MEX-051-GTO



Km: 3.90      Tipo: 1      Sent: 1

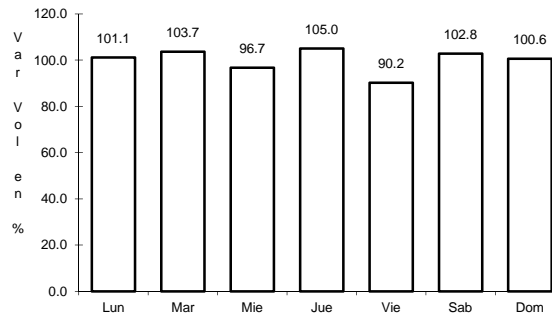
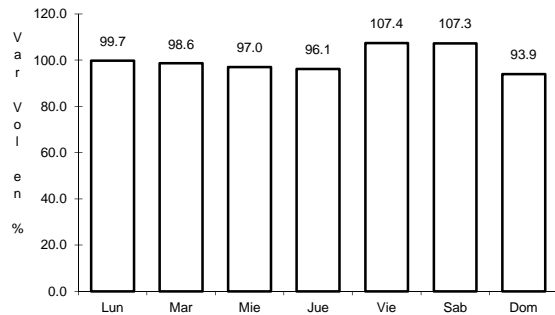
Km: 3.90      Tipo: 1      Sent: 2

Km: 85.42      Tipo: 1      Sent: 0

53 CARR: Cortázar - Valle de Santiago

CLAVE: 11016

RUTA: MEX-GTO-017



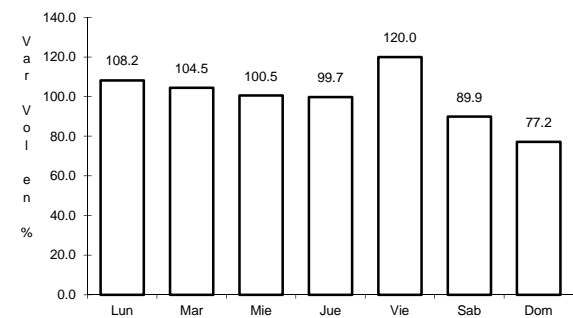
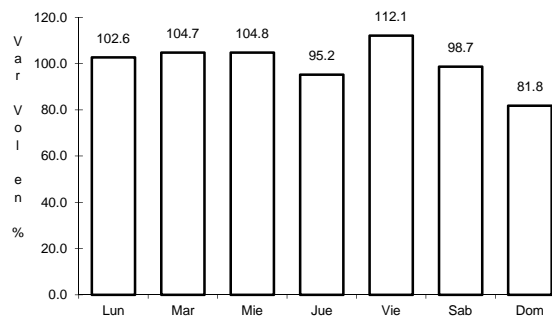
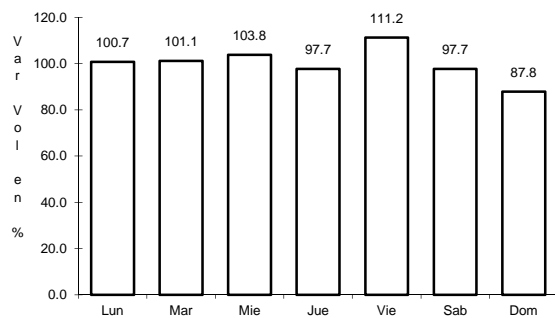
Km: 0.00      Tipo: 3      Sent: 0

Km: 29.20      Tipo: 1      Sent: 0

54 CARR: Guanajuato - Los Infantes

CLAVE: 11067

RUTA: MEX-110-GTO

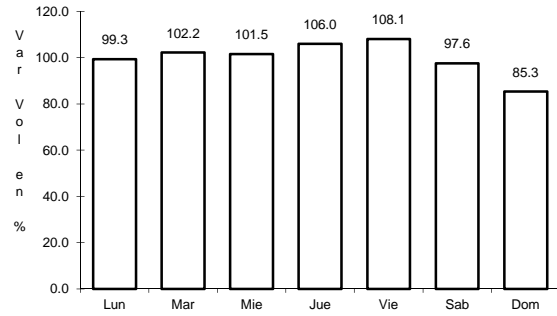


Km: 0.00      Tipo: 3      Sent: 1

Km: 0.00      Tipo: 3      Sent: 2

Km: 22.00      Tipo: 1      Sent: 0

55 CARR: Tepatlán - Las Adjuntas

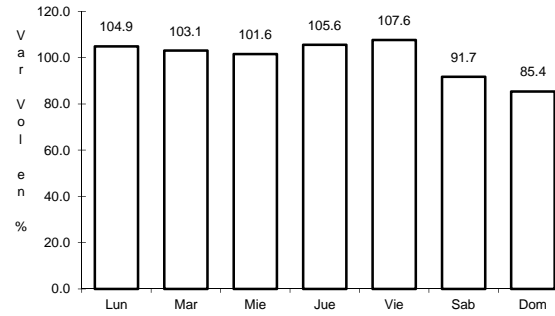


Km: 0.00

Tipo: 3

Sent: 1

CLAVE: 00141

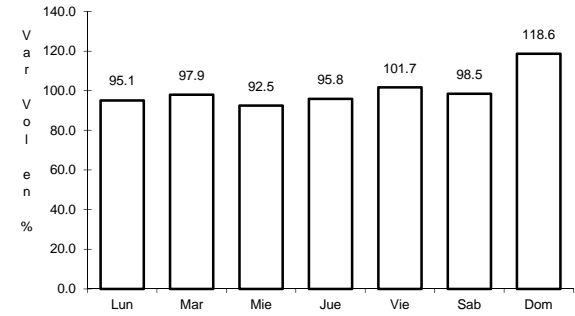


Km: 0.00

Tipo: 3

Sent: 2

RUTA: JAL/MEX-084



Km: 100.00

Tipo: 1

Sent: 0

