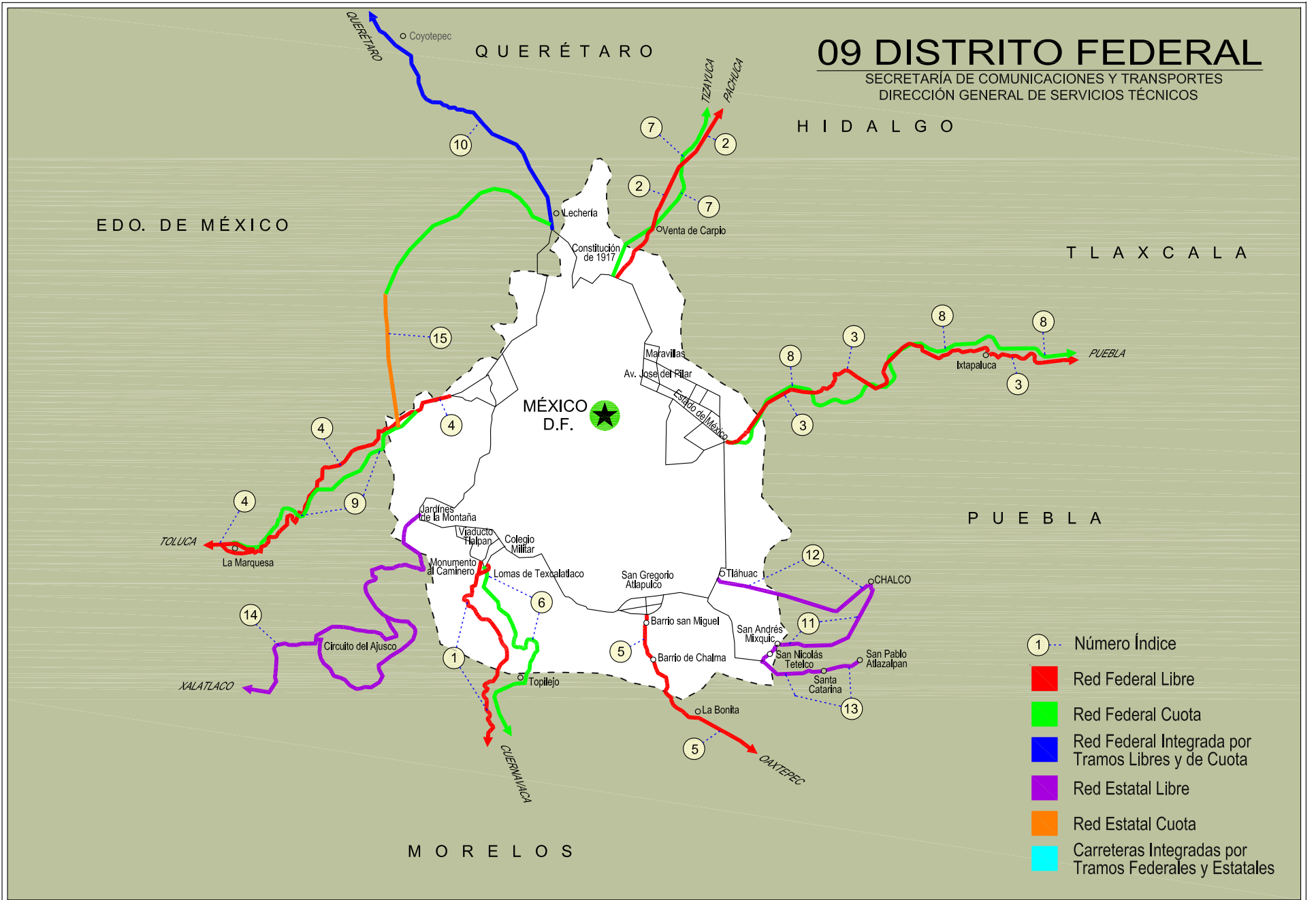
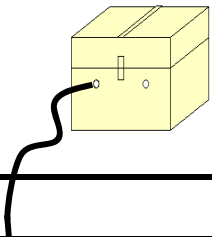


09 DISTRITO FEDERAL

SECRETARÍA DE COMUNICACIONES Y TRANSPORTES
DIRECCIÓN GENERAL DE SERVICIOS TÉCNICOS



- ① --- Número Índice
- Red Federal Libre
- Red Federal Cuota
- Red Federal Integrada por Tramos Libres y de Cuota
- Red Estatal Libre
- Red Estatal Cuota
- Carreteras Integradas por Tramos Federales y Estatales



DISTRITO FEDERAL

NO. INDICE	CARRETERA	RUTA
	---RED FEDERAL LIBRE---	
1	México - Cuernavaca (Libre)	MEX-095
2	México - Pachuca (Libre)	MEX-085
3	México - Puebla (Libre)	MEX-150
4	México - Toluca	MEX-015
5	San Gregorio - Oaxtepec	MEX-113
	---RED FEDERAL DE CUOTA---	
6	México - Cuernavaca (Cuota)	MEX-095D
7	México - Pachuca (Cuota)	MEX-085D
8	México - Puebla (Cuota)	MEX-150D
9	México - Toluca (Cuota)	MEX-015D
	---RED FEDERAL INTEGRADA POR TRAMOS LIBRES Y DE CUOTA---	
10	México - Querétaro (Cuota)	MEX-057-MEX-057D
	---RED ESTATAL LIBRE---	
11	Chalco - Mixquic	EM-DF
12	Chalco - Tláhuac	EM-DF
13	T. C. (México - Mixquic) - San Pablo Atlazalpan	EM-106-DF
14	Xalatlaco - El Ajusco	EM-DF
	---RED ESTATAL DE CUOTA---	
15	La Venta - Chamapa (Cuota)	EM-D

DISTRITO FEDERAL

1 CARR: México - Cuernavaca (Libre)

CLAVE: 00040

RUTA: MEX-095

AÑO: 2015

LUGAR	ESTACION				CLASIFICACION VEHICULAR EN PORCIENTO										COORDENADAS					
	KM	TE	SC	TDPA	M	A	B	C2	C3	T3S2	T3S3	T3S2R4	OTROS	A	B	C	K'	D	LATITUD	LONGITUD
México	0.00																			
T., Izq. San Miguel Xicalco	25.50	1	0	23421	0.0	86.7	3.4	6.1	2.4	0.6	0.3	0.3	0.2	86.7	3.4	9.9	0.075	0.512	19.236357	-99.158798
T., Izq. San Miguel Xicalco	25.50	3	0	22693	0.1	89.7	2.3	5.0	1.5	0.5	0.3	0.3	0.3	89.8	2.3	7.9	0.059	0.505	19.233820	-99.156670
T. Izq. San Miguel Topilejo	28.78	1	1	9625	0.1	89.9	2.0	5.5	1.1	0.6	0.3	0.4	0.1	90.0	2.0	8.0	0.083	0.507	19.213820	-99.152050
T. Izq. San Miguel Topilejo	28.78	1	2	9892	0.1	91.2	2.0	4.3	1.4	0.5	0.2	0.2	0.1	91.3	2.0	6.7	0.088	0.507	19.213820	-99.152050
T. Izq. San Miguel Topilejo	28.78	3	0	15769	0.0	90.8	2.4	3.8	1.3	0.9	0.4	0.3	0.1	90.8	2.4	6.8	0.073	0.501	19.208980	-99.155910
Parres El Guarda	39.50	1	0	9136	0.1	89.6	2.5	4.5	1.5	0.8	0.5	0.3	0.2	89.7	2.5	7.8	0.088	0.508	19.140700	-99.169650
Parres El Guarda	39.50	3	0	8531	0.1	86.3	3.6	5.6	2.3	0.9	0.4	0.5	0.3	86.4	3.6	10.0	0.081	0.511	19.129060	-99.180720
Lim. Edos. Term. D. F. Ppia. Mor.	45.44																			
T. Der. Zempoala	51.40	1	0	9225	0.1	89.1	3.2	4.3	1.9	0.6	0.3	0.3	0.2	89.2	3.2	7.6	0.089	0.514	19.056940	-99.242730
T. Der. Zempoala	51.40	3	0	7173	0.1	88.6	3.6	4.5	1.9	0.7	0.3	0.2	0.1	88.7	3.6	7.7	0.091	0.510	19.045490	-99.237280
T. Izq. Coajomulco	57.12	3	0	6108	0.1	86.5	3.2	6.7	2.0	0.8	0.3	0.3	0.1	86.6	3.2	10.2	0.086	0.515	19.026930	-99.209560
T. Der. Huitzilac	64.20	1	0	8275	0.1	89.9	2.9	4.2	1.7	0.6	0.3	0.2	0.1	90.0	2.9	7.1	0.085	0.563	19.002120	-99.257880
T. Der. Huitzilac	64.20	3	0	13476	0.1	89.8	2.7	4.5	1.7	0.6	0.3	0.2	0.1	89.9	2.7	7.4	0.075	0.501	19.000680	-99.258470
T. Izq. Tepoztlán	71.36	1	0	24714	0.0	92.2	2.0	3.1	0.9	0.9	0.4	0.3	0.2	92.2	2.0	5.8	0.067	0.501	18.969870	-99.248740
T. Izq. Tepoztlán	71.36	3	1	17742	1.9	92.7	1.3	3.5	0.6	0.0	0.0	0.0	0.0	94.6	1.3	4.1	0.078	0.500	18.962560	-99.246570
T. Izq. Tepoztlán	71.36	3	2	18680	2.0	92.3	1.5	3.6	0.6	0.0	0.0	0.0	0.0	94.3	1.5	4.2	0.077	0.500	18.962560	-99.246570
Cuernavaca	75.42																			

2 CARR: México - Pachuca (Libre)

CLAVE: 00431

RUTA: MEX-085

AÑO: 2015

LUGAR	ESTACION				CLASIFICACION VEHICULAR EN PORCIENTO										COORDENADAS					
	KM	TE	SC	TDPA	M	A	B	C2	C3	T3S2	T3S3	T3S2R4	OTROS	A	B	C	K'	D	LATITUD	LONGITUD
México	0.00																			
Lim. Edos. Term. D. F. Ppia. Mex.	9.89																			
T. Der. Pirámides	26.93	1	0	28842	0.1	84.9	3.3	6.2	1.7	2.0	1.0	0.6	0.2	85.0	3.3	11.7	0.060	0.514	19.617290	-99.010770
Venta de Carpio	27.00	3	1	23454	0.0	91.8	1.2	3.2	1.1	1.1	0.7	0.6	0.3	91.8	1.2	7.0	0.060	0.502	19.626160	-99.002840
Venta de Carpio	27.00	3	2	23664	0.0	89.2	1.3	5.3	1.4	1.2	0.6	0.7	0.3	89.2	1.3	9.5	0.059	0.502	19.626160	-99.002840
T. Der. Autopista México - Tecámac (Cuota)	37.52	1	1	25861	0.0	86.7	1.8	6.6	2.7	1.2	0.6	0.3	0.1	86.7	1.8	11.5	0.058	0.518	19.704860	-98.978160
T. Der. Autopista México - Tecámac (Cuota)	37.52	1	2	25236	0.0	90.1	1.0	5.6	1.1	0.9	0.4	0.7	0.2	90.1	1.0	8.9	0.057	0.518	19.704860	-98.978160
T. Izq. Zumpango	44.68	1	1	16346	0.0	88.0	1.7	5.0	1.7	1.3	0.8	1.2	0.3	88.0	1.7	10.3	0.058	0.513	19.760800	-98.973583
T. Izq. Zumpango	44.68	1	2	17223	0.1	87.5	1.9	5.1	2.1	1.8	0.7	0.5	0.3	87.6	1.9	10.5	0.060	0.513	19.760800	-98.973583
T. Izq. Zumpango	44.68	3	1	10516	0.1	86.8	1.2	6.6	2.4	1.7	0.3	0.7	0.2	86.9	1.2	11.9	0.068	0.552	19.775250	-98.972850
T. Izq. Zumpango	44.68	3	2	10456	0.1	86.9	1.8	5.5	2.6	1.5	0.8	0.5	0.3	87.0	1.8	11.2	0.066	0.552	19.775250	-98.972850
Lim. Edos. Term. Mex. Ppia. Hgo.	49.30																			

DISTRITO FEDERAL

2 CARR: México - Pachuca (Libre)

CLAVE: 00431

RUTA: MEX-085

AÑO: 2015

LUGAR	ESTACION				CLASIFICACION VEHICULAR EN PORCIENTO													COORDENADAS		
	KM	TE	SC	TDPA	M	A	B	C2	C3	T3S2	T3S3	T3S2R4	OTROS	A	B	C	K'	D	LATITUD	LONGITUD
Tizayuca	52.50	3	1	10004	0.1	88.9	1.6	5.5	1.5	1.3	0.5	0.4	0.2	89.0	1.6	9.4	0.079	0.518	19.859117	-98.967483
Tizayuca	52.50	3	2	10760	0.1	89.0	1.3	5.1	1.6	1.4	0.5	0.8	0.2	89.1	1.3	9.6	0.076	0.518	19.859117	-98.967483
T. C. México - Tizayuca (Cuota)	61.00	3	1	22253	0.0	84.2	2.8	7.2	2.2	1.9	0.7	0.7	0.3	84.2	2.8	13.0	0.081	0.520	19.895700	-98.930883
T. C. México - Tizayuca (Cuota)	61.00	3	2	24098	0.0	85.0	3.0	5.6	2.5	1.8	0.8	1.0	0.3	85.0	3.0	12.0	0.082	0.520	19.895700	-98.930883
X. C. Arco Norte de La Ciudad de México	64.20	1	1	22249	0.0	85.1	3.2	7.0	1.7	1.7	0.6	0.5	0.2	85.1	3.2	11.7	0.089	0.509	19.922100	-99.901833
X. C. Arco Norte de La Ciudad de México	64.20	1	2	23096	0.0	82.4	4.0	6.7	2.8	2.0	0.6	1.2	0.3	82.4	4.0	13.6	0.086	0.509	19.922100	-99.901833
X. C. Arco Norte de La Ciudad de México	64.20	3	1	22462	0.0	83.6	3.5	8.3	1.8	1.6	0.6	0.4	0.2	83.6	3.5	12.9	0.087	0.525	19.929383	-98.892800
X. C. Arco Norte de La Ciudad de México	64.20	3	2	24794	0.0	82.8	4.2	7.4	2.1	1.8	0.5	0.7	0.5	82.8	4.2	13.0	0.080	0.525	19.929383	-98.892800
Ent. Colonia	83.97	1	1	32754	0.0	86.0	3.3	4.1	2.5	1.7	1.0	1.3	0.1	86.0	3.3	10.7	0.063	0.526	20.052505	-98.788648
Ent. Colonia	83.97	1	2	29511	0.0	86.0	2.7	5.7	3.0	1.3	0.8	0.1	0.4	86.0	2.7	11.3	0.069	0.526	20.052505	-98.788648
X. C. Libramiento de Pachuca	86.50	1	1	36697	0.4	87.1	3.4	4.4	0.5	1.1	1.9	0.5	0.7	87.5	3.4	9.1	0.054	0.501	20.096819	-98.767517
X. C. Libramiento de Pachuca	86.50	1	2	36434	0.8	85.4	3.4	5.1	0.5	1.3	2.2	0.5	0.8	86.2	3.4	10.4	0.053	0.501	20.096819	-98.767517
Pachuca	94.00																			

3 CARR: México - Puebla (Libre)

CLAVE: 00449

RUTA: MEX-150

AÑO: 2015

LUGAR	ESTACION				CLASIFICACION VEHICULAR EN PORCIENTO													COORDENADAS		
	KM	TE	SC	TDPA	M	A	B	C2	C3	T3S2	T3S3	T3S2R4	OTROS	A	B	C	K'	D	LATITUD	LONGITUD
México	0.00																			
Lim. Edos. Term. D. F. Ppia. Mex.	18.66																			
T. Der. Chalco	28.85	1	1	33250	1.0	89.1	0.8	4.2	1.3	0.9	2.0	0.3	0.4	90.1	0.8	9.1	0.054	0.500	19.311010	-98.905040
T. Der. Chalco	28.85	1	2	31031	1.1	88.0	0.8	4.6	1.5	1.1	2.2	0.3	0.4	89.1	0.8	10.1	0.058	0.500	19.311010	-98.905040
T. Der. Chalco	28.85	3	1	14518	0.1	88.7	1.7	4.8	2.1	1.1	0.6	0.6	0.3	88.8	1.7	9.5	0.063	0.511	19.312310	-98.896270
T. Der. Chalco	28.85	3	2	15197	0.0	87.4	2.2	5.2	2.3	1.1	0.7	0.8	0.3	87.4	2.2	10.4	0.069	0.511	19.312310	-98.896270
Ixtapaluca	31.06	3	1	19702	0.0	87.5	1.4	5.6	2.6	1.4	0.6	0.7	0.2	87.5	1.4	11.1	0.064	0.504	19.315810	-98.874950
Ixtapaluca	31.06	3	2	20041	0.0	89.1	1.7	4.6	1.5	1.4	0.6	0.9	0.2	89.1	1.7	9.2	0.062	0.504	19.315810	-98.874950
T. Der. C. México - Puebla (Cuota) (Río Frío)	62.06	1	0	2959	0.3	71.3	6.0	8.7	3.9	5.9	2.5	1.2	0.2	71.6	6.0	22.4	0.071	0.509	19.348790	-98.671680
T. Der. C. México - Puebla (Cuota) (Río Frío)	62.06	3	0	1334	0.4	77.1	4.3	8.7	2.1	4.2	2.1	0.9	0.2	77.5	4.3	18.2	0.124	0.515	19.349080	-98.656090
Lim. Edos. Term. Mex. Ppia. Pue.	62.98																			
San Martín Texmelucan	70.00	1	0	12762	9.0	72.3	2.1	14.3	0.7	0.6	0.8	0.1	0.1	81.3	2.1	16.6	0.074	0.503	19.301605	-98.452792
X. C. México - Puebla (Cuota)	74.10	3	1	9258	5.0	81.6	1.5	7.4	1.2	2.0	0.8	0.3	0.2	86.6	1.5	11.9	0.089	0.510	19.260916	-98.429657
X. C. México - Puebla (Cuota)	74.10	3	2	8895	5.3	79.9	1.8	8.2	1.3	2.1	0.9	0.3	0.2	85.2	1.8	13.0	0.085	0.510	19.260889	-98.429778
Huejotzingo	88.00	1	1	6030	4.3	82.9	0.8	8.3	1.4	1.4	0.6	0.1	0.2	87.2	0.8	12.0	0.073	0.502	19.183192	-98.416691
Huejotzingo	88.00	1	2	6068	2.7	83.7	0.9	8.7	1.5	1.6	0.6	0.1	0.2	86.4	0.9	12.7	0.072	0.502	19.183198	-98.416693
Huejotzingo	88.00	3	1	6083	2.5	82.6	1.1	9.5	1.5	1.7	0.7	0.1	0.3	85.1	1.1	13.8	0.073	0.508	19.148951	-98.397932

DISTRITO FEDERAL

3 CARR : México - Puebla (Libre)

CLAVE: 00449

RUTA: MEX-150

AÑO: 2015

LUGAR	ESTACION				CLASIFICACION VEHICULAR EN PORCIENTO														COORDENADAS	
	KM	TE	SC	TDPA	M	A	B	C2	C3	T3S2	T3S3	T3S2R4	OTROS	A	B	C	K'	D	LATITUD	LONGITUD
Huejotzingo	88.00	3	2	6289	3.2	80.3	1.2	10.7	1.6	1.9	0.7	0.1	0.3	83.5	1.2	15.3	0.080	0.508	19.148944	-98.397943
T. Izq. Aeropuerto	92.80	1	1	5746	2.7	80.8	3.1	9.0	1.6	2.0	0.5	0.1	0.2	83.5	3.1	13.4	0.079	0.504	19.136562	-98.377245
T. Izq. Aeropuerto	92.80	1	2	5663	2.5	78.8	3.5	10.3	1.7	2.3	0.6	0.1	0.2	81.3	3.5	15.2	0.088	0.504	19.136555	-98.377231
T. Der. Cholula	101.00	1	1	11381	1.7	88.4	0.4	4.3	1.1	1.5	1.8	0.2	0.6	90.1	0.4	9.5	0.081	0.503	19.076766	-98.322338
T. Der. Cholula	101.00	1	2	11250	1.6	87.4	0.4	4.7	1.3	1.7	2.1	0.2	0.6	89.0	0.4	10.6	0.076	0.503	19.076765	-98.322329
T. Der. Cholula	101.00	3	1	16020	2.0	88.5	0.7	5.4	1.3	1.2	0.6	0.1	0.2	90.5	0.7	8.8	0.074	0.532	19.070238	-98.312792
T. Der. Cholula	101.00	3	2	18243	2.2	87.8	0.7	5.8	1.4	1.2	0.6	0.1	0.2	90.0	0.7	9.3	0.068	0.532	19.070223	-98.312777
Puebla	131.00																			

4 CARR : México - Toluca

CLAVE: 00447

RUTA: MEX-015

AÑO: 2015

LUGAR	ESTACION				CLASIFICACION VEHICULAR EN PORCIENTO														COORDENADAS	
	KM	TE	SC	TDPA	M	A	B	C2	C3	T3S2	T3S3	T3S2R4	OTROS	A	B	C	K'	D	LATITUD	LONGITUD
México	0.00																			
Ent. Constituyentes y Reforma	12.84	3	1	34009	0.0	85.8	1.5	6.0	1.9	2.1	1.2	1.1	0.4	85.8	1.5	12.7	0.063	0.519	19.387290	-99.244160
Ent. Constituyentes y Reforma	12.84	3	2	31513	0.0	84.9	2.6	4.7	2.7	2.2	1.3	1.3	0.3	84.9	2.6	12.5	0.061	0.519	19.387290	-99.244160
T. Der. Cuajimalpa (1° Acceso)	20.56	1	1	36430	0.0	82.8	2.7	6.6	2.2	2.3	1.7	1.2	0.5	82.8	2.7	14.5	0.059	0.517	19.363850	-99.280430
T. Der. Cuajimalpa (1° Acceso)	20.56	1	2	33993	0.0	87.8	1.7	5.1	1.7	1.6	0.9	0.9	0.3	87.8	1.7	10.5	0.064	0.517	19.363850	-99.280430
T. Izq. Desierto de Los Leones	23.96	1	1	33207	0.0	85.1	2.3	5.9	1.9	1.8	1.2	1.6	0.2	85.1	2.3	12.6	0.061	0.511	19.338420	-99.311280
T. Izq. Desierto de Los Leones	23.96	1	2	31830	0.0	82.8	2.8	6.9	2.6	2.3	1.5	0.8	0.3	82.8	2.8	14.4	0.069	0.511	19.338420	-99.311280
Lim. Edos. Term. D. F. Ppia. Mex.	33.44																			
T. Der. Huixquilucan	33.98	1	1	27546	0.0	82.7	3.3	6.7	2.2	2.2	1.4	1.3	0.2	82.7	3.3	14.0	0.074	0.515	19.298560	-99.364990
T. Der. Huixquilucan	33.98	1	2	25979	0.0	84.4	2.2	8.1	2.1	1.7	0.6	0.7	0.2	84.4	2.2	13.4	0.073	0.515	19.298560	-99.364990
X. C. Amomolulco - Stgo. Tianguistenco	47.26	1	1	47567	0.0	78.5	3.3	8.8	2.4	3.2	2.0	1.4	0.4	78.5	3.3	18.2	0.065	0.557	19.282550	-99.480160
X. C. Amomolulco - Stgo. Tianguistenco	47.26	1	2	45497	0.0	81.7	3.8	5.9	2.6	2.8	1.6	1.4	0.2	81.7	3.8	14.5	0.069	0.557	19.282550	-99.480160
T. Der. Lerma - Izq. San Pedro Tultepec	51.71	1	1	63227	0.0	79.0	4.3	6.8	2.7	3.0	2.0	1.8	0.4	79.0	4.3	16.7	0.060	0.537	19.284140	-99.502470
T. Der. Lerma - Izq. San Pedro Tultepec	51.71	1	2	61913	0.0	77.9	4.8	7.3	3.7	3.0	1.6	1.5	0.2	77.9	4.8	17.3	0.059	0.537	19.284140	-99.502470
T. Izq. San Mateo Atenco (Baja)	52.00	3	1	17492	0.0	64.1	7.7	13.4	2.5	6.2	4.0	1.6	0.5	64.1	7.7	28.2	0.072	0.503	19.286370	-99.537240
T. Izq. San Mateo Atenco (Alta)	52.00	3	1	53963	0.0	100.0	0.0	0.0	0.0	0.0	0.0	0.0	0.0	100.0	0.0	0.0	0.068	0.520	19.286370	-99.537240
T. Izq. San Mateo Atenco (Alta)	52.00	3	2	58478	0.0	100.0	0.0	0.0	0.0	0.0	0.0	0.0	0.0	100.0	0.0	0.0	0.064	0.520	19.285460	-99.542050
T. Izq. San Mateo Atenco (Baja)	52.00	3	2	17734	0.1	63.4	8.4	12.5	5.3	7.0	1.9	0.4	1.0	63.5	8.4	28.1	0.069	0.503	19.285460	-99.542050
X. C. Libramiento de Toluca (Baja)	62.20	1	1	19087	0.0	74.1	7.3	9.9	4.0	2.2	1.0	1.2	0.3	74.1	7.3	18.6	0.084	0.550	19.288250	-99.621580
X. C. Libramiento de Toluca (Alta)	62.20	1	1	74107	0.0	100.0	0.0	0.0	0.0	0.0	0.0	0.0	0.0	100.0	0.0	0.0	0.063	0.538	19.288250	-99.621580
X. C. Libramiento de Toluca (Alta)	62.20	1	2	66022	0.0	100.0	0.0	0.0	0.0	0.0	0.0	0.0	0.0	100.0	0.0	0.0	0.067	0.538	19.287750	-99.621840
X. C. Libramiento de Toluca (Baja)	62.20	1	2	17851	0.0	76.0	7.9	9.6	2.9	1.6	0.9	0.9	0.2	76.0	7.9	16.1	0.099	0.550	19.287750	-99.621840

DISTRITO FEDERAL

4 CARR: México - Toluca

CLAVE: 00447

RUTA: MEX-015

AÑO: 2015

LUGAR	ESTACION	CLASIFICACION VEHICULAR EN PORCIENTO														COORDENADAS						
		KM	TE	SC	TDPA	M	A	B	C2	C3	T3S2	T3S3	T3S2R4	OTROS	A	B	C	K'	D	LATITUD	LONGITUD	
Toluca	66.00																					

5 CARR: San Gregorio - Oaxtepec

CLAVE: 00901

RUTA: MEX-113

AÑO: 2015

LUGAR	ESTACION	CLASIFICACION VEHICULAR EN PORCIENTO														COORDENADAS				
		KM	TE	SC	TDPA	M	A	B	C2	C3	T3S2	T3S3	T3S2R4	OTROS	A	B	C	K'	D	LATITUD
San Gregorio	0.00	3	0	16066	0.1	89.3	2.0	5.7	1.3	0.8	0.3	0.3	0.2	89.4	2.0	8.6	0.064	0.501	19.240540	-99.054930
X. C. Milpa Alta - San Lorenzo Tlacoyucan	9.00	3	0	8128	0.1	91.7	1.4	3.4	1.3	1.2	0.5	0.3	0.1	91.8	1.4	6.8	0.063	0.509	19.179080	-99.024520
Lim. Edos. Term. D. F. Ppia. Mex.	18.80																			
Lim. Edos. Term. Mex. Ppia. Mor.	28.50																			
T. Der. San Felipe Neri	33.80	1	0	5306	0.2	87.0	3.4	5.8	1.2	1.5	0.5	0.3	0.1	87.2	3.4	9.4	0.080	0.502	19.052010	-98.934690
T. Der. Tlalnepantla	40.50	3	0	5165	0.1	90.7	1.5	3.7	1.5	1.3	0.6	0.3	0.3	90.8	1.5	7.7	0.093	0.501	19.004180	-98.990210
Tlayacapan	48.50	3	0	11047	0.1	91.3	1.5	3.2	1.2	1.4	0.7	0.3	0.3	91.4	1.5	7.1	0.091	0.506	18.938910	-98.973590
T. Der. Yautepec	53.00	1	0	8466	0.1	89.9	1.7	4.0	1.3	1.6	0.7	0.4	0.3	90.0	1.7	8.3	0.106	0.505	18.925790	-98.968100
T. Der. Yautepec	53.00	3	0	14193	0.1	93.1	0.9	2.4	1.0	1.3	0.7	0.3	0.2	93.2	0.9	5.9	0.069	0.503	18.920130	-98.970800
Oaxtepec	56.00																			

6 CARR: México - Cuernavaca (Cuota)

CLAVE: 00041

RUTA: MEX-095D

AÑO: 2015

LUGAR	ESTACION	CLASIFICACION VEHICULAR EN PORCIENTO														COORDENADAS				
		KM	TE	SC	TDPA	M	A	B	C2	C3	T3S2	T3S3	T3S2R4	OTROS	A	B	C	K'	D	LATITUD
México	0.00																			
T. C. México - Cuernavaca (Libre)	18.65	3	1	25292	0.0	86.0	3.3	5.0	1.9	1.8	1.3	0.5	0.2	86.0	3.3	10.7	0.072	0.503	19.259410	-99.163660
T. C. México - Cuernavaca (Libre)	18.65	3	2	25615	0.0	86.5	3.1	5.0	1.1	2.2	1.5	0.4	0.2	86.5	3.1	10.4	0.085	0.503	19.259410	-99.163660
Caseta de Cobro Tlalpan	23.36	2	1	18235	0.9	86.6	3.3	2.6	2.4	2.3	0.6	1.0	0.3	87.5	3.3	9.2	0.145	0.500	19.241966	-99.148261
Caseta de Cobro Tlalpan	23.36	2	2	18235	0.9	86.6	3.3	2.6	2.4	2.3	0.6	1.0	0.3	87.5	3.3	9.2	0.145	0.500	19.241966	-99.148261
Lim. Edos. Term. D. F. Ppia. Mor.	47.09																			
Tres Marías	53.00	1	1	17183	0.1	84.9	5.8	3.2	1.8	2.3	1.2	0.5	0.2	85.0	5.8	9.2	0.102	0.502	19.070520	-99.237250
Tres Marías	53.00	1	2	17319	0.0	84.0	4.9	4.6	2.1	2.3	1.1	0.8	0.2	84.0	4.9	11.1	0.105	0.502	19.070520	-99.237250
Tres Marías	53.00	3	1	17819	0.0	85.1	4.0	3.5	2.6	2.6	1.2	0.6	0.4	85.1	4.0	10.9	0.102	0.503	19.047330	-99.237570
Tres Marías	53.00	3	2	18041	0.0	83.7	4.1	4.2	2.2	3.2	1.2	1.2	0.2	83.7	4.1	12.2	0.102	0.503	19.047330	-99.237570
T. Izq. Cuautla	70.50	1	1	20312	0.0	88.6	3.8	2.9	1.4	2.0	0.7	0.4	0.2	88.6	3.8	7.6	0.081	0.532	19.013170	-99.163470
T. Izq. Cuautla	70.50	1	2	19491	0.0	85.9	4.7	3.7	1.3	2.4	0.9	0.9	0.2	85.9	4.7	9.4	0.082	0.532	19.013170	-99.163470
Libramiento de Cuernavaca	79.26	1	1	19631	0.0	87.9	2.3	3.3	1.3	2.7	1.3	0.9	0.3	87.9	2.3	9.8	0.073	0.504	18.966640	-99.236300
T. Izq. A Glorieta La Paloma	79.26	1	1	19736	0.0	87.0	2.8	3.9	1.3	2.9	1.3	0.5	0.3	87.0	2.8	10.2	0.075	0.516	18.974190	-99.235610

DISTRITO FEDERAL

6 CARR: México - Cuernavaca (Cuota)

CLAVE: 00041

RUTA: MEX-095D

AÑO: 2015

LUGAR	ESTACION				CLASIFICACION VEHICULAR EN PORCIENTO														COORDENADAS	
	KM	TE	SC	TDPA	M	A	B	C2	C3	T3S2	T3S3	T3S2R4	OTROS	A	B	C	K'	D	LATITUD	LONGITUD
T. Izq. A Glorieta La Paloma	79.26	1	2	18537	0.0	88.5	2.4	3.5	1.2	2.4	1.1	0.7	0.2	88.5	2.4	9.1	0.086	0.516	18.974190	-99.235610
Libramiento de Cuernavaca	79.26	1	2	19327	0.0	88.0	2.5	3.2	1.7	2.4	1.6	0.4	0.2	88.0	2.5	9.5	0.077	0.504	18.966640	-99.236300
T. C. México - Cuernavaca (Libre)	80.26																			

7 CARR: México - Pachuca (Cuota)

CLAVE: 00432

RUTA: MEX-085D

AÑO: 2015

LUGAR	ESTACION				CLASIFICACION VEHICULAR EN PORCIENTO														COORDENADAS	
	KM	TE	SC	TDPA	M	A	B	C2	C3	T3S2	T3S3	T3S2R4	OTROS	A	B	C	K'	D	LATITUD	LONGITUD
T. C. México - Pachuca (Libre)	0.00																			
Lim. Edos. Term. D. F. Ppia. Mex.	9.86																			
Caseta de Cobro Ojo de Agua	25.00	2	1	27128	0.8	84.8	6.3	2.9	3.0	1.4	0.2	0.5	0.1	85.6	6.3	8.1	0.081	0.500	19.618818	-99.029462
Caseta de Cobro Ojo de Agua	25.00	2	2	27128	0.8	84.8	6.3	2.9	3.0	1.4	0.2	0.5	0.1	85.6	6.3	8.1	0.081	0.500	19.618818	-99.029462
Caseta de Cobro Ojo de Agua	25.00	3	1	24175	0.0	82.9	4.3	6.7	2.4	1.9	0.7	0.8	0.3	82.9	4.3	12.8	0.076	0.517	19.625760	-99.025720
Caseta de Cobro Ojo de Agua	25.00	3	2	25839	0.0	85.8	4.0	6.1	1.1	1.7	0.6	0.5	0.2	85.8	4.0	10.2	0.075	0.517	19.625760	-99.025720
T. Izq. Tecámac	35.62	3	1	21692	0.7	83.3	3.1	7.3	1.6	2.3	0.8	0.6	0.3	84.0	3.1	12.9	0.102	0.523	19.708180	-98.966520
T. Izq. Tecámac	35.62	3	2	25217	1.2	80.7	3.5	8.6	1.7	2.5	0.9	0.6	0.3	81.9	3.5	14.6	0.101	0.523	19.708180	-98.966520
Lim. Edos. Term. Mex. Ppia. Hgo.	49.60																			
X. C. Otumba - Tizayuca	53.45	1	1	17963	0.7	85.3	2.9	6.0	1.5	1.9	0.8	0.5	0.4	86.0	2.9	11.1	0.117	0.514	19.831883	-98.950750
X. C. Otumba - Tizayuca	53.45	1	2	18844	1.1	83.4	3.3	6.7	1.6	2.0	1.0	0.5	0.4	84.5	3.3	12.2	0.097	0.514	19.831883	-98.950750
T. C. México - Pachuca (Libre)	60.50	1	1	19134	0.0	83.9	3.7	6.9	2.6	1.4	0.6	0.6	0.3	83.9	3.7	12.4	0.102	0.523	19.882333	-98.937800
T. C. México - Pachuca (Libre)	60.50	1	2	21016	0.0	87.1	2.4	5.0	2.6	1.5	0.5	0.7	0.2	87.1	2.4	10.5	0.094	0.523	19.882333	-98.937800

8 CARR: México - Puebla (Cuota)

CLAVE: 00450

RUTA: MEX-150D

AÑO: 2015

LUGAR	ESTACION				CLASIFICACION VEHICULAR EN PORCIENTO														COORDENADAS	
	KM	TE	SC	TDPA	M	A	B	C2	C3	T3S2	T3S3	T3S2R4	OTROS	A	B	C	K'	D	LATITUD	LONGITUD
México	0.00																			
Ent. Concordia	17.00	3	1	62425	1.2	84.9	3.5	4.1	0.9	2.4	2.3	0.5	0.2	86.1	3.5	10.4	0.058	0.513	19.354806	-98.990815
Ent. Concordia	17.00	3	2	59759	1.3	83.1	3.9	4.4	1.0	2.9	2.7	0.5	0.2	84.4	3.9	11.7	0.058	0.513	19.354806	-98.990815
Lim. Edos. Term. D. F. Ppia. Mex.	17.51																			
Av. Las Torres (Eje 6)	19.27	1	1	68180	1.8	86.8	1.7	2.8	1.0	1.9	2.0	1.0	1.0	88.6	1.7	9.7	0.055	0.507	19.347720	-98.983350
Av. Las Torres (Eje 6)	19.27	1	2	69913	1.8	85.4	2.0	3.0	1.1	2.1	2.2	1.2	1.2	87.2	2.0	10.8	0.057	0.507	19.347720	-98.983350
Av. Las Torres (Eje 6)	19.27	3	1	71413	1.4	87.7	2.0	4.0	1.0	1.3	1.4	0.6	0.6	89.1	2.0	8.9	0.067	0.510	19.340620	-98.976880
Av. Las Torres (Eje 6)	19.27	3	2	76431	1.4	86.3	2.2	4.7	1.2	1.4	1.5	0.7	0.6	87.7	2.2	10.1	0.054	0.510	19.340620	-98.976880
Eje 10 Sur	22.80	1	1	84788	0.1	71.8	4.2	8.0	3.5	5.4	3.3	1.7	2.0	71.9	4.2	23.9	0.052	0.503	19.327166	-98.962557

DISTRITO FEDERAL

8 CARR : México - Puebla (Cuota)

CLAVE: 00450

RUTA: MEX-150D

AÑO : 2015

LUGAR	ESTACION				CLASIFICACION VEHICULAR EN PORCIENTO														COORDENADAS	
	KM	TE	SC	TDPA	M	A	B	C2	C3	T3S2	T3S3	T3S2R4	OTROS	A	B	C	K'	D	LATITUD	LONGITUD
Eje 10 Sur	22.80	1	2	84262	0.1	68.8	4.5	9.0	4.0	6.0	3.5	1.9	2.2	68.9	4.5	26.6	0.052	0.503	19.327166	-98.962557
Eje 10 Sur	22.80	3	1	72850	0.0	74.8	5.2	11.0	3.4	2.9	1.3	1.2	0.2	74.8	5.2	20.0	0.051	0.508	19.320880	-98.955220
Eje 10 Sur	22.80	3	2	75347	0.0	80.7	3.8	8.2	2.4	2.4	1.2	1.0	0.3	80.7	3.8	15.5	0.053	0.508	19.320880	-98.955220
X. C. Santa Bárbara - Izúcar de Matamoros	32.14	1	1	51295	0.0	75.4	6.6	10.1	2.1	3.3	1.0	1.3	0.2	75.4	6.6	18.0	0.055	0.516	19.292420	-98.891850
X. C. Santa Bárbara - Izúcar de Matamoros	32.14	1	2	48092	0.0	82.4	4.0	5.3	2.4	3.2	1.0	1.5	0.2	82.4	4.0	13.6	0.056	0.516	19.292420	-98.891850
X. C. Santa Bárbara - Izúcar de Matamoros	32.14	3	1	12313	0.1	81.2	3.5	5.4	2.5	4.6	1.2	1.3	0.2	81.3	3.5	15.2	0.094	0.505	19.294248	-98.878428
X. C. Santa Bárbara - Izúcar de Matamoros	32.14	3	2	12551	0.1	80.8	2.7	6.4	3.4	4.1	1.2	1.1	0.2	80.9	2.7	16.4	0.106	0.505	19.294248	-98.878428
Caseta de Cobro San Marcos	33.30	2	1	15661	0.3	74.0	7.5	5.0	4.5	6.0	0.4	2.0	0.3	74.3	7.5	18.2	0.068	0.500	19.296361	-98.870726
Caseta de Cobro San Marcos	33.30	2	2	15661	0.3	74.0	7.5	5.0	4.5	6.0	0.4	2.0	0.3	74.3	7.5	18.2	0.068	0.500	19.296361	-98.870726
T. Izq. Río Frío	63.79	3	1	16772	0.1	81.9	3.5	5.5	2.3	3.9	1.7	0.9	0.2	82.0	3.5	14.5	0.077	0.517	19.350760	-98.658740
T. Izq. Río Frío	63.79	3	2	15690	0.1	81.1	3.5	6.3	2.3	3.9	1.3	1.3	0.2	81.2	3.5	15.3	0.097	0.517	19.350760	-98.658740
Lim. Edos. Term. Mex. Ppia. Pue.	65.46																			
T. Izq. Tlaxcala	90.61	1	1	16470	1.3	73.2	8.1	7.6	2.6	4.3	0.5	1.9	0.5	74.5	8.1	17.4	0.068	0.504	19.273806	-98.435995
T. Izq. Tlaxcala	90.61	1	2	16734	1.2	70.1	8.9	9.1	2.8	4.8	0.5	2.1	0.5	71.3	8.9	19.8	0.078	0.504	19.273809	-98.435997
T. Izq. Tlaxcala	90.61	3	1	22072	0.5	72.4	5.4	6.9	2.6	7.0	1.4	2.9	0.9	72.9	5.4	21.7	0.062	0.511	19.260735	-98.416160
T. Izq. Tlaxcala	90.61	3	2	23029	0.7	69.1	5.6	7.5	3.0	8.2	1.6	3.3	1.0	69.8	5.6	24.6	0.072	0.511	19.261828	-98.417572
Caseta de Cobro San Martín Texmelucan	91.17	2	1	22440	0.3	70.3	7.3	4.6	4.4	8.3	1.0	3.4	0.4	70.6	7.3	22.1	0.068	0.500	19.241098	-98.385680
Caseta de Cobro San Martín Texmelucan	91.17	2	2	22440	0.3	70.3	7.3	4.6	4.4	8.3	1.0	3.4	0.4	70.6	7.3	22.1	0.068	0.500	19.241098	-98.385680
Lim. Edos. Term. Pue. Ppia. Tlax.	99.11																			
T. Der. Aeropuerto Internacional De Puebla	101.10	3	1	27985	0.8	74.4	6.2	4.7	3.2	5.8	1.3	2.7	0.9	75.2	6.2	18.6	0.063	0.502	19.208126	-98.348321
T. Der. Aeropuerto Internacional De Puebla	101.10	3	2	27772	0.7	71.9	6.7	5.2	3.8	6.4	1.3	2.9	1.1	72.6	6.7	20.7	0.070	0.502	19.208122	-98.348315
X. C. Xoxtla - Huactzinco	107.98	1	1	28400	0.8	73.1	6.2	4.8	3.5	6.7	1.3	2.7	0.9	73.9	6.2	19.9	0.062	0.506	19.178728	-98.312462
X. C. Xoxtla - Huactzinco	107.98	1	2	27772	0.7	70.5	6.8	5.3	4.0	7.0	1.4	3.2	1.1	71.2	6.8	22.0	0.070	0.506	19.178730	-98.312454
X. C. Xoxtla - Huactzinco	107.98	3	1	34171	1.4	72.6	5.1	7.4	2.5	6.1	1.6	2.6	0.7	74.0	5.1	20.9	0.064	0.507	19.171767	-98.304135
X. C. Xoxtla - Huactzinco	107.98	3	2	33291	1.2	70.4	5.6	8.3	2.8	6.3	1.7	3.0	0.7	71.6	5.6	22.8	0.069	0.507	19.171766	-98.304131
Lim. Edos. Term. Tlax. Ppia. Pue.	108.00																			
Anillo Periferico Poniente De Puebla (Central)	114.00	3	1	22258	0.8	74.3	5.3	4.8	3.5	6.9	0.9	2.8	0.7	75.1	5.3	19.6	0.062	0.522	19.130353	-98.267410
Anillo Periferico Poniente De Puebla (Lateral)	114.00	3	1	25922	0.6	83.8	3.1	6.3	2.8	1.5	0.5	0.7	0.7	84.4	3.1	12.5	0.098	0.523	19.128618	-98.265607
Anillo Periferico Poniente De Puebla (Central)	114.00	3	2	20401	0.9	72.3	6.1	5.1	3.8	7.1	0.9	3.0	0.8	73.2	6.1	20.7	0.071	0.522	19.128859	-98.265218
Anillo Periferico Poniente De Puebla (Lateral)	114.00	3	2	28477	0.5	82.1	3.6	7.0	3.1	1.6	0.5	0.8	0.8	82.6	3.6	13.8	0.105	0.523	19.128889	-98.265278
Boulevard Hermanos Serdán	120.46	3	1	51585	0.7	79.3	5.0	6.0	3.6	3.0	0.6	1.6	0.2	80.0	5.0	15.0	0.065	0.503	19.093415	-98.224389
Boulevard Hermanos Serdán	120.46	3	2	50876	0.7	76.6	6.0	6.8	3.8	3.6	0.6	1.7	0.2	77.3	6.0	16.7	0.068	0.503	19.093405	-98.224375
X. C. Puebla - Tlaxcala (Lateral)	123.00	3	1	28433	0.7	85.4	6.8	3.5	1.7	1.1	0.5	0.1	0.2	86.1	6.8	7.1	0.072	0.529	19.085501	-98.196185
X. C. Puebla - Tlaxcala (Central)	123.00	3	1	30688	0.7	76.6	3.9	7.4	3.4	4.5	0.9	2.3	0.3	77.3	3.9	18.8	0.071	0.529	19.085501	-98.196185
X. C. Puebla - Tlaxcala (Central)	123.00	3	2	42957	0.6	75.4	4.1	7.6	3.7	5.0	1.0	2.3	0.3	76.0	4.1	19.9	0.073	0.529	19.085513	-98.196186

DISTRITO FEDERAL

8 CARR: México - Puebla (Cuota)

CLAVE: 00450

RUTA: MEX-150D

AÑO: 2015

LUGAR	ESTACION				CLASIFICACION VEHICULAR EN PORCIENTO														COORDENADAS	
	KM	TE	SC	TDPA	M	A	B	C2	C3	T3S2	T3S3	T3S2R4	OTROS	A	B	C	K'	D	LATITUD	LONGITUD
X. C. Puebla - Tlaxcala (Lateral)	123.00	3	2	23327	0.8	83.7	7.8	3.8	1.9	1.2	0.5	0.1	0.2	84.5	7.8	7.7	0.090	0.529	19.085513	-98.196186
T. C. Puebla - Tlaxcala	124.90																			

9 CARR: México - Toluca (Cuota)

CLAVE: 00446

RUTA: MEX-015D

AÑO: 2015

LUGAR	ESTACION				CLASIFICACION VEHICULAR EN PORCIENTO														COORDENADAS	
	KM	TE	SC	TDPA	M	A	B	C2	C3	T3S2	T3S3	T3S2R4	OTROS	A	B	C	K'	D	LATITUD	LONGITUD
T. C. México - Toluca (Libre) (Puente Conafrut)	0.00	3	1	33403	0.0	86.2	3.4	5.8	2.0	1.0	0.6	0.8	0.2	86.2	3.4	10.4	0.060	0.521	19.380930	-99.250560
T. C. México - Toluca (Libre) (Puente Conafrut)	0.00	3	2	30688	0.0	86.6	3.7	5.1	1.9	1.3	0.6	0.6	0.2	86.6	3.7	9.7	0.072	0.521	19.380930	-99.250560
Caseta de Cobro Santa Fe	3.50	1	1	26781	0.0	87.9	2.1	5.1	1.8	1.3	0.6	0.9	0.3	87.9	2.1	10.0	0.058	0.518	19.367040	-99.266950
Caseta de Cobro Santa Fe	3.50	1	2	24950	0.0	84.7	2.5	6.9	2.1	1.8	1.2	0.6	0.2	84.7	2.5	12.8	0.064	0.518	19.367040	-99.266950
Caseta de Cobro Santa Fe	3.50	3	1	23190	0.0	91.4	1.9	3.2	1.4	0.9	0.5	0.5	0.2	91.4	1.9	6.7	0.071	0.522	19.356130	-99.277690
Caseta de Cobro Santa Fe	3.50	3	2	21256	0.0	90.0	2.1	4.2	1.6	1.1	0.5	0.3	0.2	90.0	2.1	7.9	0.087	0.522	19.356130	-99.277690
Caseta de Cobro La Venta	10.00	1	1	22966	0.0	91.8	2.2	3.0	1.2	0.9	0.3	0.5	0.1	91.8	2.2	6.0	0.071	0.505	19.335430	-99.301610
Caseta de Cobro La Venta	10.00	1	2	22520	0.0	90.5	2.3	4.2	1.1	0.9	0.5	0.4	0.1	90.5	2.3	7.2	0.098	0.505	19.335430	-99.301610
Caseta de Cobro La Venta	10.00	2	1	20630	0.5	88.2	7.5	1.7	0.5	0.8	0.1	0.6	0.1	88.7	7.5	3.8	0.089	0.500	19.332891	-99.314468
Caseta de Cobro La Venta	10.00	2	2	20630	0.5	88.2	7.5	1.7	0.5	0.8	0.1	0.6	0.1	88.7	7.5	3.8	0.089	0.500	19.332891	-99.314468
Caseta de Cobro La Venta	10.00	3	1	32685	0.0	85.5	3.7	4.7	1.9	2.0	1.0	1.0	0.2	85.5	3.7	10.8	0.059	0.511	19.319440	-99.321260
Caseta de Cobro La Venta	10.00	3	2	31312	0.0	86.7	3.1	5.5	2.0	1.4	0.7	0.4	0.2	86.7	3.1	10.2	0.067	0.511	19.319440	-99.321260
Lim. Edos. Term. D. F. Ppia. Mex.	18.66																			
T. C. México - Toluca (Libre) (La Marquesa)	19.20	1	1	31774	0.0	89.0	2.4	4.7	1.2	1.3	0.6	0.6	0.2	89.0	2.4	8.6	0.060	0.564	19.298030	-99.356160
T. C. México - Toluca (Libre) (La Marquesa)	19.20	1	2	30872	0.0	85.3	2.3	6.0	2.3	1.8	1.1	0.8	0.4	85.3	2.3	12.4	0.067	0.564	19.298030	-99.356160

10 CARR: México - Querétaro (Cuota)

CLAVE: 00411

RUTA: MEX-057-MEX-057D

AÑO: 2015

LUGAR	ESTACION				CLASIFICACION VEHICULAR EN PORCIENTO														COORDENADAS	
	KM	TE	SC	TDPA	M	A	B	C2	C3	T3S2	T3S3	T3S2R4	OTROS	A	B	C	K'	D	LATITUD	LONGITUD
México	0.00																			
Lim. Edos. Term. D. F. Ppia. Mex.	11.30																			
Caseta de Cobro Tepetzotlán	43.01	2	1	26721	0.3	69.2	6.4	5.1	4.6	10.7	0.9	2.4	0.4	69.5	6.4	24.1	0.077	0.500	19.715358	-99.207587
Caseta de Cobro Tepetzotlán	43.01	2	2	26721	0.3	69.2	6.4	5.1	4.6	10.7	0.9	2.4	0.4	69.5	6.4	24.1	0.077	0.500	19.715358	-99.207587
Ent. Jorobas	56.18	1	1	28764	2.0	70.3	4.0	7.8	2.9	7.8	1.8	2.4	1.0	72.3	4.0	23.7	0.071	0.504	19.823000	-99.246250
Ent. Jorobas	56.18	1	2	29411	1.2	68.1	4.6	8.6	3.3	8.4	2.1	2.7	1.0	69.3	4.6	26.1	0.080	0.504	19.822900	-99.246190
Ent. Jorobas	56.18	3	1	28862	0.0	79.0	3.5	7.0	3.0	2.9	2.0	1.9	0.7	79.0	3.5	17.5	0.064	0.568	19.828810	-99.257000
Ent. Jorobas	56.18	3	2	28493	0.0	76.3	4.0	5.4	2.5	6.5	2.9	2.0	0.4	76.3	4.0	19.7	0.078	0.568	19.828810	-99.257000

DISTRITO FEDERAL

10 CARR : México - Querétaro (Cuota)

CLAVE: 00411

RUTA: MEX-057-MEX-057D

AÑO : 2015

LUGAR	ESTACION				CLASIFICACION VEHICULAR EN PORCIENTO										COORDENADAS					
	KM	TE	SC	TDPA	M	A	B	C2	C3	T3S2	T3S3	T3S2R4	OTROS	A	B	C	K'	D	LATITUD	LONGITUD
Lim. Edos. Term. Mex. Ppia. Hgo.	59.85																			
T. Der. Tepeji del Río	69.36	1	1	27484	0.0	73.3	3.7	6.6	3.3	8.4	2.6	1.5	0.6	73.3	3.7	23.0	0.066	0.509	19.875840	-99.337600
T. Der. Tepeji del Río	69.36	1	2	26500	0.0	73.2	4.1	5.7	2.6	9.1	3.2	1.5	0.6	73.2	4.1	22.7	0.080	0.509	19.875840	-99.337600
T. Der. Tepeji del Río	69.36	3	1	24561	1.1	66.1	6.7	6.8	3.5	10.2	2.6	2.3	0.7	67.2	6.7	26.1	0.066	0.506	19.914617	-99.362453
T. Der. Tepeji del Río	69.36	3	2	25253	1.0	62.1	7.4	7.4	4.1	12.0	2.7	2.6	0.7	63.1	7.4	29.5	0.070	0.506	19.914617	-99.362453
T. Izq. Jilotepec	83.75	1	1	25472	0.0	69.6	6.7	5.2	3.9	8.7	2.3	3.1	0.5	69.6	6.7	23.7	0.063	0.523	19.975800	-99.436070
T. Izq. Jilotepec	83.75	1	2	27949	0.0	72.0	6.9	5.3	3.2	7.9	2.2	1.7	0.8	72.0	6.9	21.1	0.084	0.523	19.975800	-99.436070
T. Izq. Jilotepec	83.75	3	1	23018	0.0	70.8	5.3	4.1	3.5	10.9	2.7	2.4	0.3	70.8	5.3	23.9	0.063	0.514	19.985670	-99.443640
T. Izq. Jilotepec	83.75	3	2	24312	0.0	71.3	6.0	5.1	3.0	9.5	2.2	2.2	0.7	71.3	6.0	22.7	0.095	0.514	19.985670	-99.443640
Lim. Edos. Term. Hgo. Ppia. Mex.	86.00																			
X. C. Jilotepec - Maravillas	107.00	1	1	24281	0.0	69.7	5.4	4.5	3.4	10.7	2.7	3.0	0.6	69.7	5.4	24.9	0.059	0.524	20.082660	-99.625120
X. C. Jilotepec - Maravillas	107.00	1	2	26719	0.0	70.2	6.4	5.0	2.4	9.6	3.7	2.3	0.4	70.2	6.4	23.4	0.082	0.524	20.082660	-99.625120
X. C. Jilotepec - Maravillas	107.00	3	1	24871	0.0	67.0	5.0	5.3	4.5	11.6	3.1	2.8	0.7	67.0	5.0	28.0	0.059	0.507	20.080840	-99.646160
X. C. Jilotepec - Maravillas	107.00	3	2	25580	0.0	73.5	4.5	4.9	2.4	10.0	2.5	1.6	0.6	73.5	4.5	22.0	0.078	0.507	20.080840	-99.646160
T. Izq. Aculco	125.00	1	1	24670	0.0	68.3	4.3	5.3	4.1	10.6	3.9	2.8	0.7	68.3	4.3	27.4	0.060	0.515	20.097470	-99.692940
T. Izq. Aculco	125.00	1	2	26165	0.0	72.9	4.4	4.4	2.9	9.4	2.5	2.7	0.8	72.9	4.4	22.7	0.084	0.515	20.097470	-99.692940
T. Izq. Aculco	125.00	3	1	23131	0.0	66.8	5.5	4.8	3.7	11.1	4.1	3.4	0.6	66.8	5.5	27.7	0.062	0.517	20.116980	-99.717850
T. Izq. Aculco	125.00	3	2	25364	0.0	69.3	5.1	4.5	2.5	10.9	3.5	3.5	0.7	69.3	5.1	25.6	0.077	0.517	20.116980	-99.717850
Lim. Edos. Term. Mex. Ppia. Qro.	145.50																			
Caseta de Cobro Palmillas	145.80	2	1	24040	0.2	57.2	4.7	5.5	6.6	18.6	1.8	4.7	0.7	57.4	4.7	37.9	0.077	0.500	20.296103	-99.928994
Caseta de Cobro Palmillas	145.80	2	2	24040	0.2	57.2	4.7	5.5	6.6	18.6	1.8	4.7	0.7	57.4	4.7	37.9	0.077	0.500	20.296103	-99.928994
T. Izq. Toluca	148.50	1	1	22472	0.0	68.3	5.2	6.0	3.3	9.7	4.0	3.1	0.4	68.3	5.2	26.5	0.057	0.508	20.292080	-99.921750
T. Izq. Toluca	148.50	1	2	21756	0.0	69.4	4.9	4.5	3.5	10.5	3.6	3.1	0.5	69.4	4.9	25.7	0.075	0.508	20.292080	-99.921750
T. Izq. Toluca	148.50	3	1	30583	0.0	69.0	4.9	5.7	3.0	9.5	3.5	3.3	1.1	69.0	4.9	26.1	0.052	0.536	20.302808	-99.934810
T. Izq. Toluca	148.50	3	2	28994	0.0	68.6	4.7	5.3	3.3	10.4	4.2	2.7	0.8	68.6	4.7	26.7	0.054	0.536	20.303050	-99.935184
T. Der. Poniente San Juan del Río	164.10	3	1	20432	0.0	75.0	5.0	6.0	3.3	6.1	2.4	1.8	0.4	75.0	5.0	20.0	0.075	0.548	20.372690	-99.991580
T. Der. Poniente San Juan del Río	164.10	3	2	24727	0.0	75.5	4.1	4.8	4.0	6.3	2.9	2.0	0.4	75.5	4.1	20.4	0.075	0.548	20.372690	-99.991580
T. Izq. Acámbaro	170.45	3	1	39840	0.0	69.4	5.5	8.2	3.3	7.4	2.6	3.2	0.4	69.4	5.5	25.1	0.061	0.508	20.446930	-100.078360
T. Izq. Acámbaro	170.45	3	2	38527	0.0	75.4	4.8	7.9	1.9	6.5	1.9	1.3	0.3	75.4	4.8	19.8	0.061	0.508	20.446930	-100.078360
T. Der. Libramiento de Querétaro a San Luis Potosí	207.00	1	1	50048	0.3	82.1	2.7	5.1	3.6	4.4	0.8	0.8	0.2	82.4	2.7	14.9	0.097	0.522	20.584826	-100.343115
T. Der. Libramiento de Querétaro a San Luis Potosí	207.00	1	2	46661	0.5	79.9	3.1	5.7	3.9	4.9	1.0	0.8	0.2	80.4	3.1	16.5	0.095	0.522	20.584826	-100.343115
T. Der. Libramiento de Querétaro a San Luis Potosí	207.00	3	1	49663	0.7	86.4	1.7	2.6	2.9	4.1	0.8	0.7	0.1	87.1	1.7	11.2	0.074	0.510	20.578879	-100.378216
T. Der. Libramiento de Querétaro a San Luis Potosí	207.00	3	2	47075	0.7	85.2	1.9	2.9	3.3	4.4	0.8	0.7	0.1	85.9	1.9	12.2	0.077	0.510	20.578879	-100.378216
Querétaro	211.60																			

DISTRITO FEDERAL

11 CARR: Chalco - Mixquic

CLAVE: 00171

RUTA: EM-DF

AÑO: 2015

LUGAR	ESTACION				CLASIFICACION VEHICULAR EN PORCIENTO													COORDENADAS		
	KM	TE	SC	TDPA	M	A	B	C2	C3	T3S2	T3S3	T3S2R4	OTROS	A	B	C	K'	D	LATITUD	LONGITUD
Chalco	0.00	3	1	12381	0.1	87.0	0.6	7.4	2.4	1.0	0.6	0.6	0.3	87.1	0.6	12.3	0.064	0.503	19.241160	-98.908660
Chalco	0.00	3	2	12210	0.1	87.0	1.0	6.3	3.1	1.1	0.5	0.7	0.2	87.1	1.0	11.9	0.076	0.503	19.241160	-98.908660
Lim. Edos. Term. Mex. Ppia. D. F.	8.00																			
Mixquic	10.00	1	0	6447	0.1	91.6	0.5	4.2	2.2	0.7	0.4	0.2	0.1	91.7	0.5	7.8	0.079	0.509	19.225110	-98.946740

12 CARR: Chalco - Tláhuac

CLAVE: 00170

RUTA: EM-DF

AÑO: 2015

LUGAR	ESTACION				CLASIFICACION VEHICULAR EN PORCIENTO													COORDENADAS		
	KM	TE	SC	TDPA	M	A	B	C2	C3	T3S2	T3S3	T3S2R4	OTROS	A	B	C	K'	D	LATITUD	LONGITUD
Chalco	0.00	3	1	10283	0.1	92.3	1.3	3.8	1.0	0.7	0.4	0.3	0.1	92.4	1.3	6.3	0.084	0.506	19.250580	-98.918600
Chalco	0.00	3	2	10020	0.1	93.0	1.0	2.8	1.2	0.8	0.5	0.5	0.1	93.1	1.0	5.9	0.067	0.506	19.250580	-98.918600
Lim. Edos. Term. Mex. Ppia. D. F.	7.50																			
Tláhuac	12.00	1	1	9354	0.0	90.6	0.9	4.3	1.7	1.6	0.6	0.1	0.2	90.6	0.9	8.5	0.096	0.506	19.263920	-98.990010
Tláhuac	12.00	1	2	9139	0.1	88.8	0.9	5.0	2.7	1.2	0.5	0.5	0.3	88.9	0.9	10.2	0.080	0.506	19.263920	-98.990010

13 CARR: T. C. (México - Mixquic) - San Pablo Atlazalpan

CLAVE: 00044

RUTA: EM-106-DF

AÑO: 2015

LUGAR	ESTACION				CLASIFICACION VEHICULAR EN PORCIENTO													COORDENADAS		
	KM	TE	SC	TDPA	M	A	B	C2	C3	T3S2	T3S3	T3S2R4	OTROS	A	B	C	K'	D	LATITUD	LONGITUD
T. C. México - Mixquic	0.00	3	0	7784	0.2	90.3	1.1	3.0	1.4	1.9	0.8	1.1	0.2	90.5	1.1	8.4	0.076	0.508	19.214270	-98.974000
Lim. Edos. Term. D. F. Ppia. Mex.	2.00																			
San Pablo Atlazalpan	7.00																			

14 CARR: Xatlalaco - El Ajusco

CLAVE: 00017

RUTA: EM-DF

AÑO: 2015

LUGAR	ESTACION				CLASIFICACION VEHICULAR EN PORCIENTO													COORDENADAS		
	KM	TE	SC	TDPA	M	A	B	C2	C3	T3S2	T3S3	T3S2R4	OTROS	A	B	C	K'	D	LATITUD	LONGITUD
T. C. Ent. Cruz de La Misión - San Nicolás Coatepec	0.00	3	0	1727	0.4	90.6	0.9	4.6	1.3	1.3	0.5	0.3	0.1	91.0	0.9	8.1	0.089	0.523	19.164000	-99.406900
Lim. Edos. Term. Mex. Ppia. D. F.	17.70																			
T. C. Circuito del Ajusco	27.60	1	0	725	0.3	93.6	0.5	4.2	1.0	0.0	0.2	0.1	0.1	93.9	0.5	5.6	0.163	0.503	19.207410	-99.276320

DISTRITO FEDERAL

15 CARR : La Venta - Chamapa (Cuota)

CLAVE: 15014

RUTA: EM-D

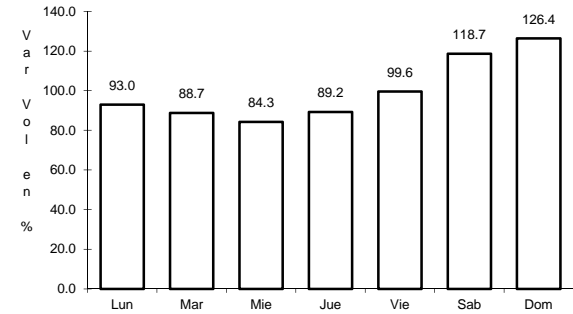
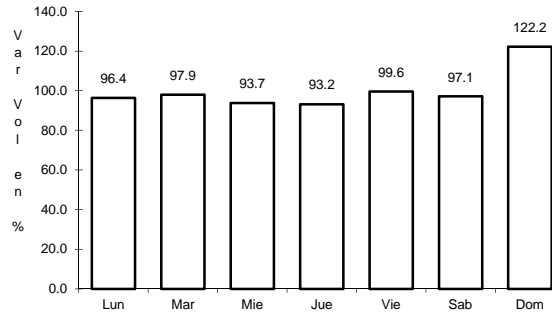
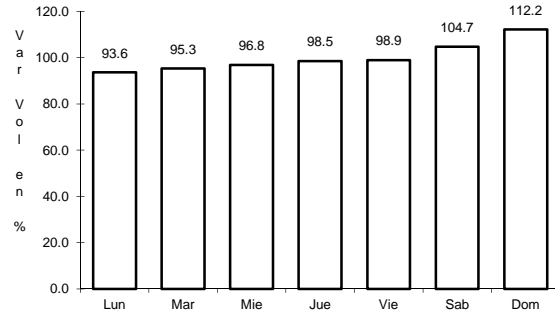
AÑO: 2015

LUGAR	ESTACION				CLASIFICACION VEHICULAR EN PORCIENTO													COORDENADAS		
	KM	TE	SC	TDPA	M	A	B	C2	C3	T3S2	T3S3	T3S2R4	OTROS	A	B	C	K'	D	LATITUD	LONGITUD
T. C. México - Toluca	0.00																			
Plaza de Cobro La Venta	0.10	2	1	11443	0.4	88.3	0.9	3.6	1.9	3.5	0.4	0.7	0.3	88.7	0.9	10.4	0.090	0.500	19.348944	-99.306623
Plaza de Cobro La Venta	0.10	2	2	11443	0.4	88.3	0.9	3.6	1.9	3.5	0.4	0.7	0.3	88.7	0.9	10.4	0.090	0.500	19.348944	-99.306623
Plaza de Cobro La Venta	0.10	3	1	19072	0.0	85.2	1.2	8.4	1.7	1.5	0.9	0.9	0.2	85.2	1.2	13.6	0.098	0.515	19.368530	-99.300800
Plaza de Cobro La Venta	0.10	3	2	17988	0.0	90.9	1.7	2.5	1.5	1.7	0.6	0.9	0.2	90.9	1.7	7.4	0.096	0.515	19.368530	-99.300800
T. Der. Interlomas	5.60	3	1	23172	0.0	83.4	2.8	5.3	2.6	2.6	1.9	1.0	0.4	83.4	2.8	13.8	0.086	0.509	19.386030	-99.295650
T. Der. Interlomas	5.60	3	2	23977	0.0	85.7	2.7	4.2	2.5	2.3	1.7	0.7	0.2	85.7	2.7	11.6	0.090	0.509	19.386030	-99.295650
X. C. Naucalpan - Toluca	11.10	1	1	22914	0.0	87.7	1.4	5.2	1.9	1.7	0.9	0.9	0.3	87.7	1.4	10.9	0.091	0.516	19.423010	-99.297210
X. C. Naucalpan - Toluca	11.10	1	2	21480	0.0	86.0	1.6	5.6	2.3	2.2	1.1	0.9	0.3	86.0	1.6	12.4	0.098	0.516	19.423010	-99.297210

1 CARR: México - Cuernavaca (Libre)

CLAVE: 00040

RUTA: MEX-095



Km: 28.78

Tipo: 1

Sent: 1

Km: 28.78

Tipo: 1

Sent: 2

Km: 51.40

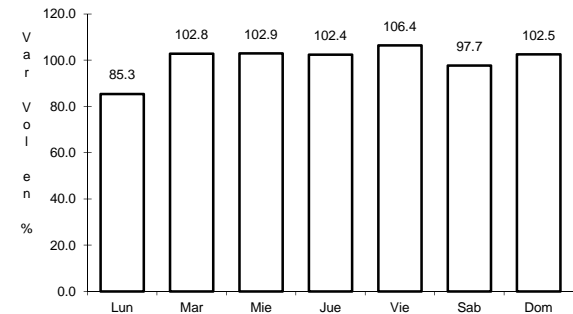
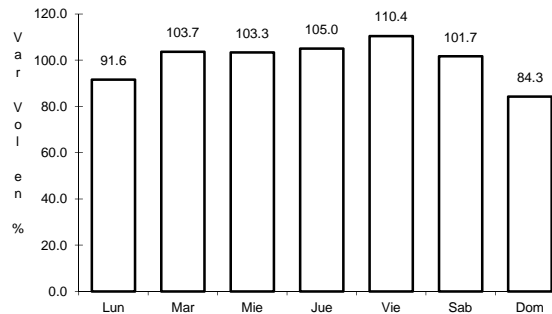
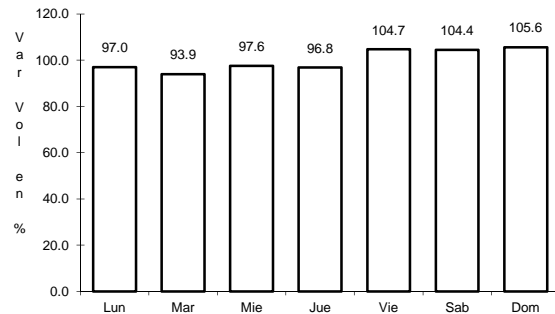
Tipo: 3

Sent: 0

2 CARR: México - Pachuca (Libre)

CLAVE: 00431

RUTA: MEX-085



Km: 26.93

Tipo: 1

Sent: 0

Km: 86.50

Tipo: 1

Sent: 1

Km: 86.50

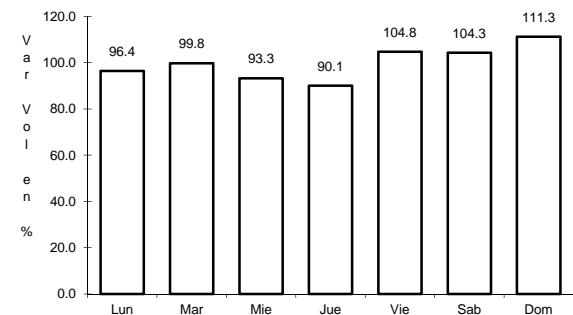
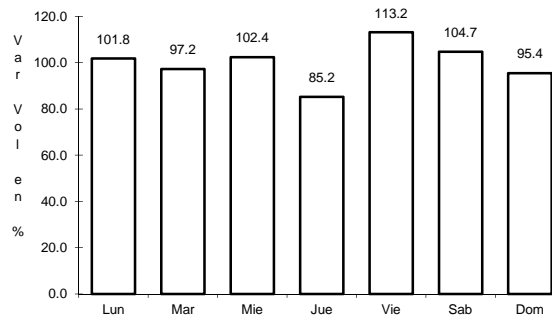
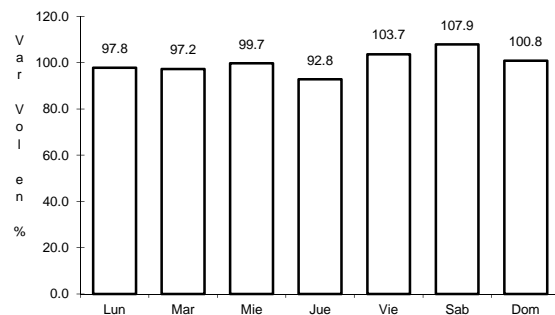
Tipo: 1

Sent: 2

3 CARR: México - Puebla (Libre)

CLAVE: 00449

RUTA: MEX-150



Km: 28.85

Tipo: 1

Sent: 1

Km: 28.85

Tipo: 1

Sent: 2

Km: 62.06

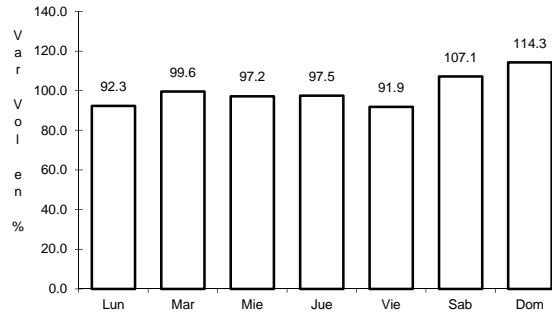
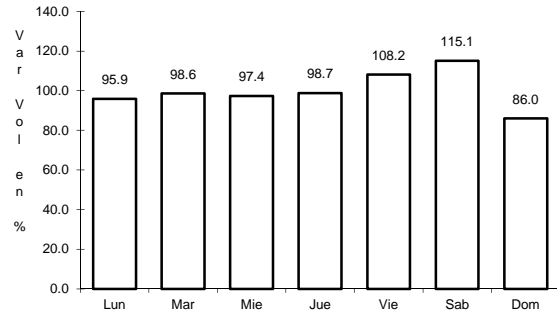
Tipo: 1

Sent: 0

4 CARR: México - Toluca

CLAVE: 00447

RUTA: MEX-015



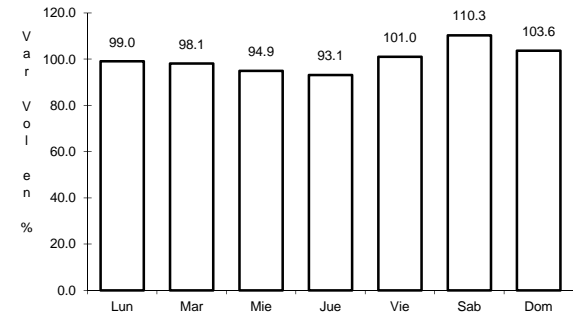
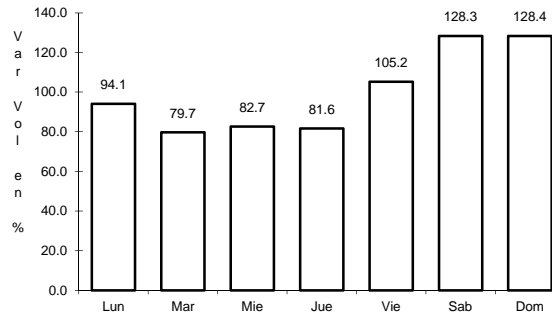
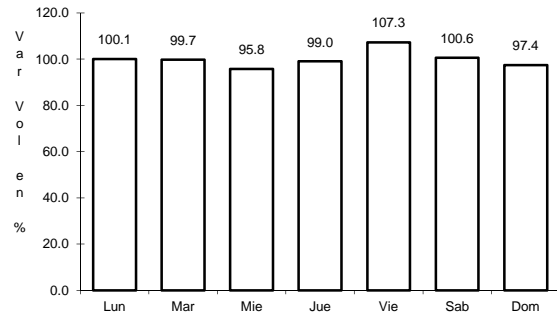
Km: 12.84 Tipo: 3 Sent: 1

Km: 12.84 Tipo: 3 Sent: 2

5 CARR: San Gregorio - Oaxtepec

CLAVE: 00901

RUTA: MEX-113



Km: 0.00 Tipo: 3 Sent: 0

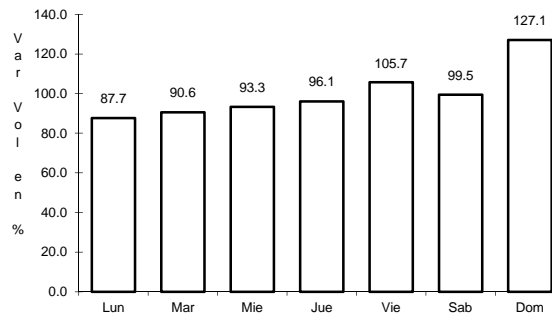
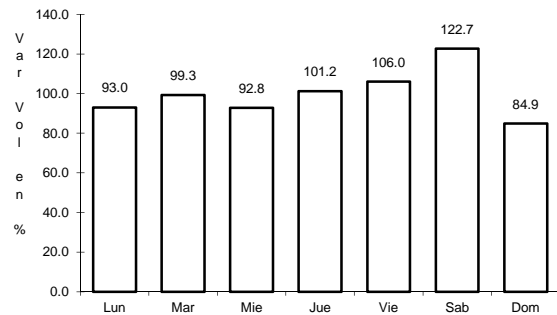
Km: 33.80 Tipo: 1 Sent: 0

Km: 53.00 Tipo: 3 Sent: 0

6 CARR: México - Cuernavaca (Cuota)

CLAVE: 00041

RUTA: MEX-095D



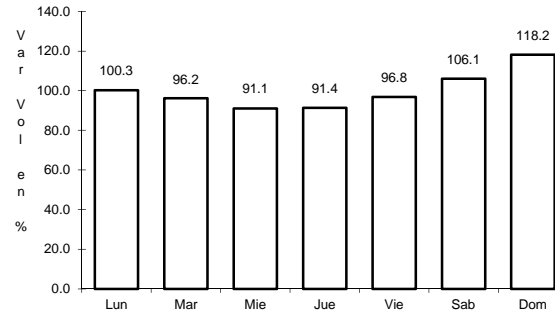
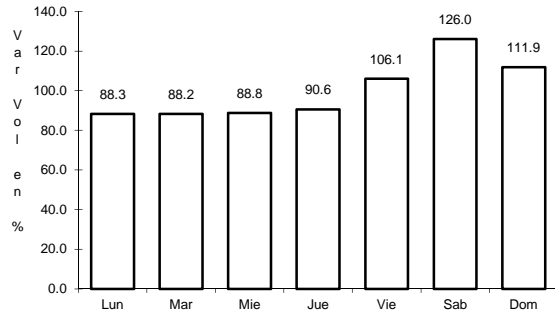
Km: 18.65 Tipo: 3 Sent: 1

Km: 18.65 Tipo: 3 Sent: 2

7 CARR: México - Pachuca (Cuota)

CLAVE: 00432

RUTA: MEX-085D



Km: 25.00

Tipo: 3

Sent: 1

Km: 25.00

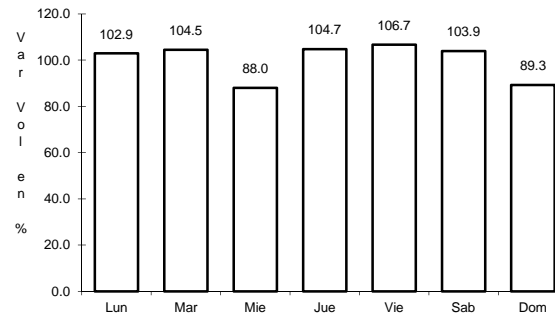
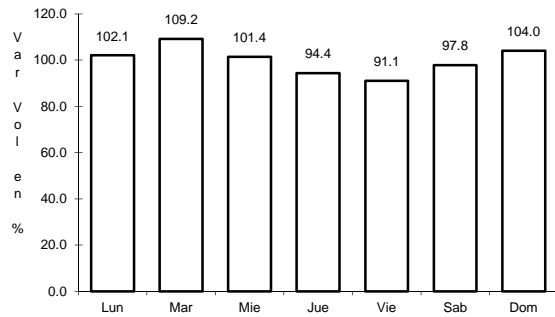
Tipo: 3

Sent: 2

8 CARR: México - Puebla (Cuota)

CLAVE: 00450

RUTA: MEX-150D



Km: 17.00

Tipo: 3

Sent: 1

Km: 17.00

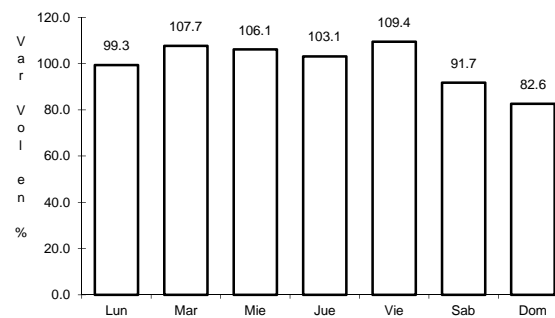
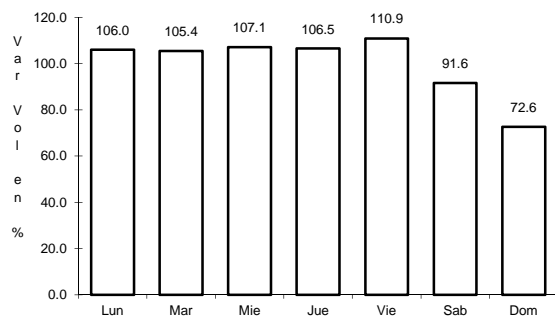
Tipo: 3

Sent: 2

9 CARR: México - Toluca (Cuota)

CLAVE: 00446

RUTA: MEX-015D



Km: 0.00

Tipo: 3

Sent: 1

Km: 0.00

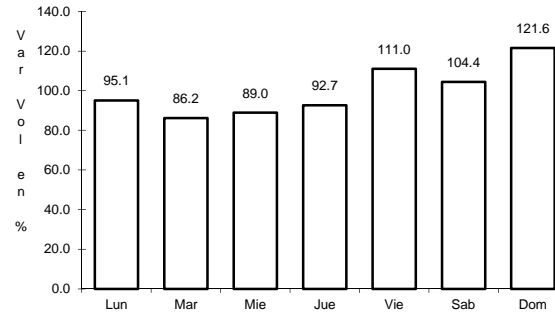
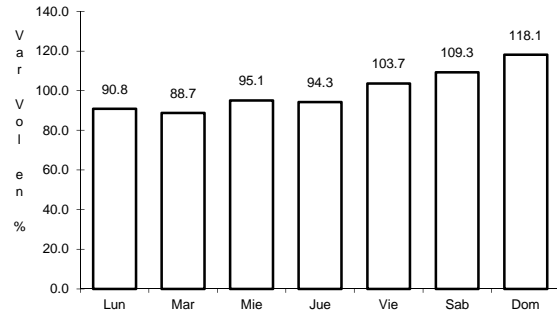
Tipo: 3

Sent: 2

10 CARR: México - Querétaro (Cuota)

CLAVE: 00411

RUTA: MEX-057-MEX-057D



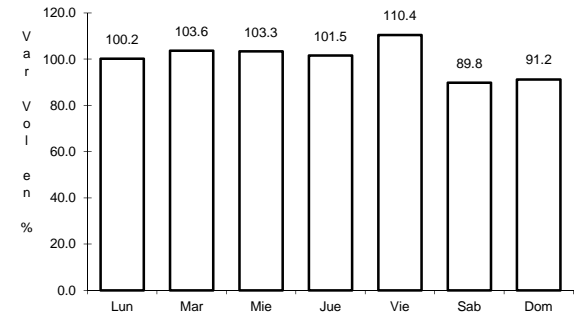
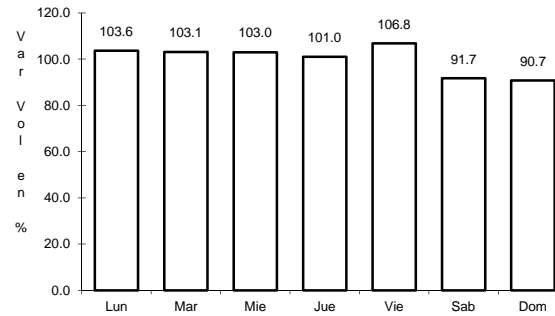
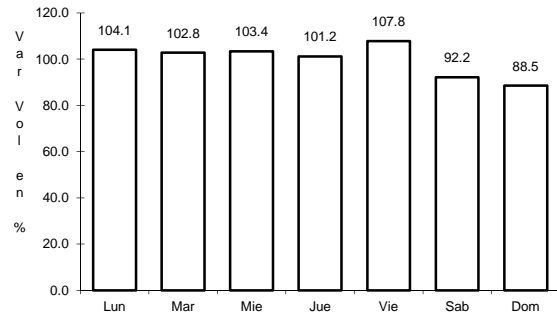
Km: 56.18 Tipo: 1 Sent: 1

Km: 56.18 Tipo: 1 Sent: 2

11 CARR: Chalco - Mixquic

CLAVE: 00171

RUTA: EM-DF



Km: 0.00 Tipo: 3 Sent: 1

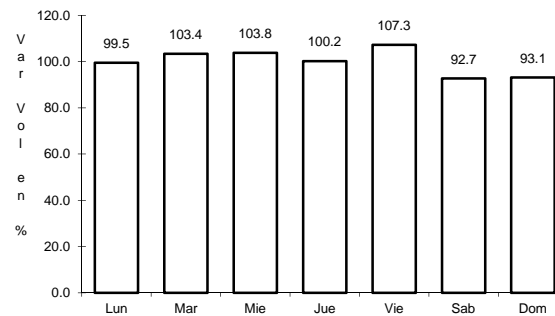
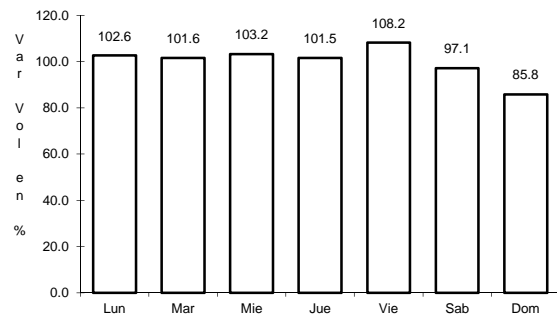
Km: 0.00 Tipo: 3 Sent: 2

Km: 10.00 Tipo: 1 Sent: 0

12 CARR: Chalco - Tláhuac

CLAVE: 00170

RUTA: EM-DF



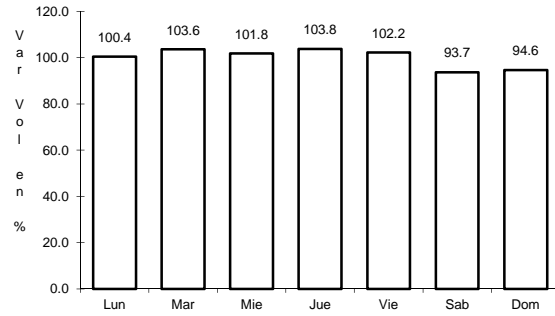
Km: 0.00 Tipo: 3 Sent: 1

Km: 0.00 Tipo: 3 Sent: 2

13 CARR: T. C. (México - Mixquic) - San Pablo Atlazalpan

CLAVE: 00044

RUTA: EM-106-DF



Km: 0.00

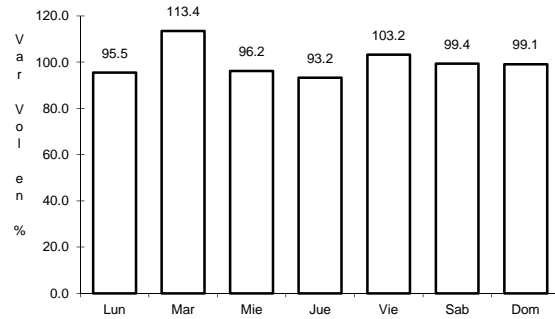
Tipo: 3

Sent: 0

14 CARR: Xalatlaco - El Ajusco

CLAVE: 00017

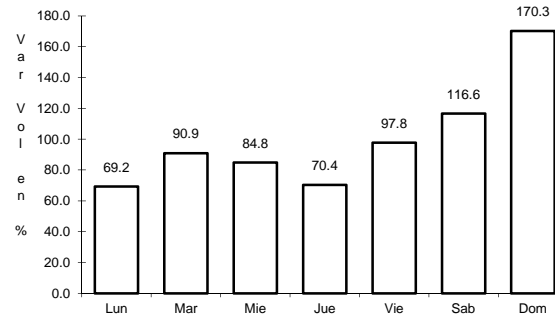
RUTA: EM-DF



Km: 0.00

Tipo: 3

Sent: 0



Km: 27.60

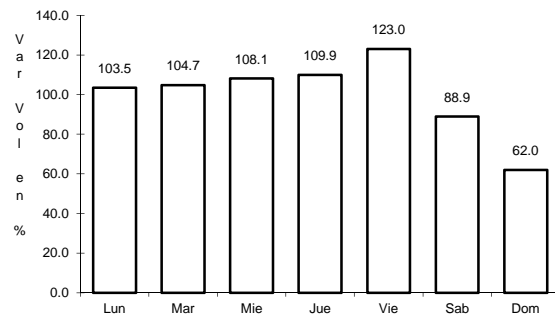
Tipo: 1

Sent: 0

15 CARR: La Venta - Chamapa (Cuota)

CLAVE: 15014

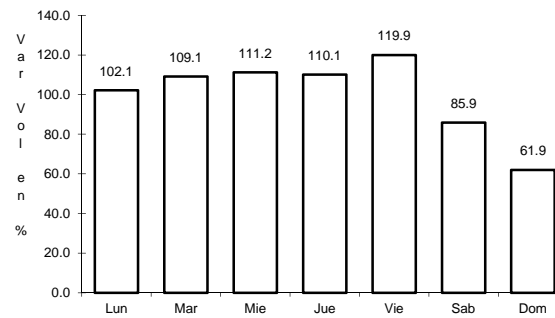
RUTA: EM-D



Km: 0.10

Tipo: 3

Sent: 1



Km: 0.10

Tipo: 3

Sent: 2

