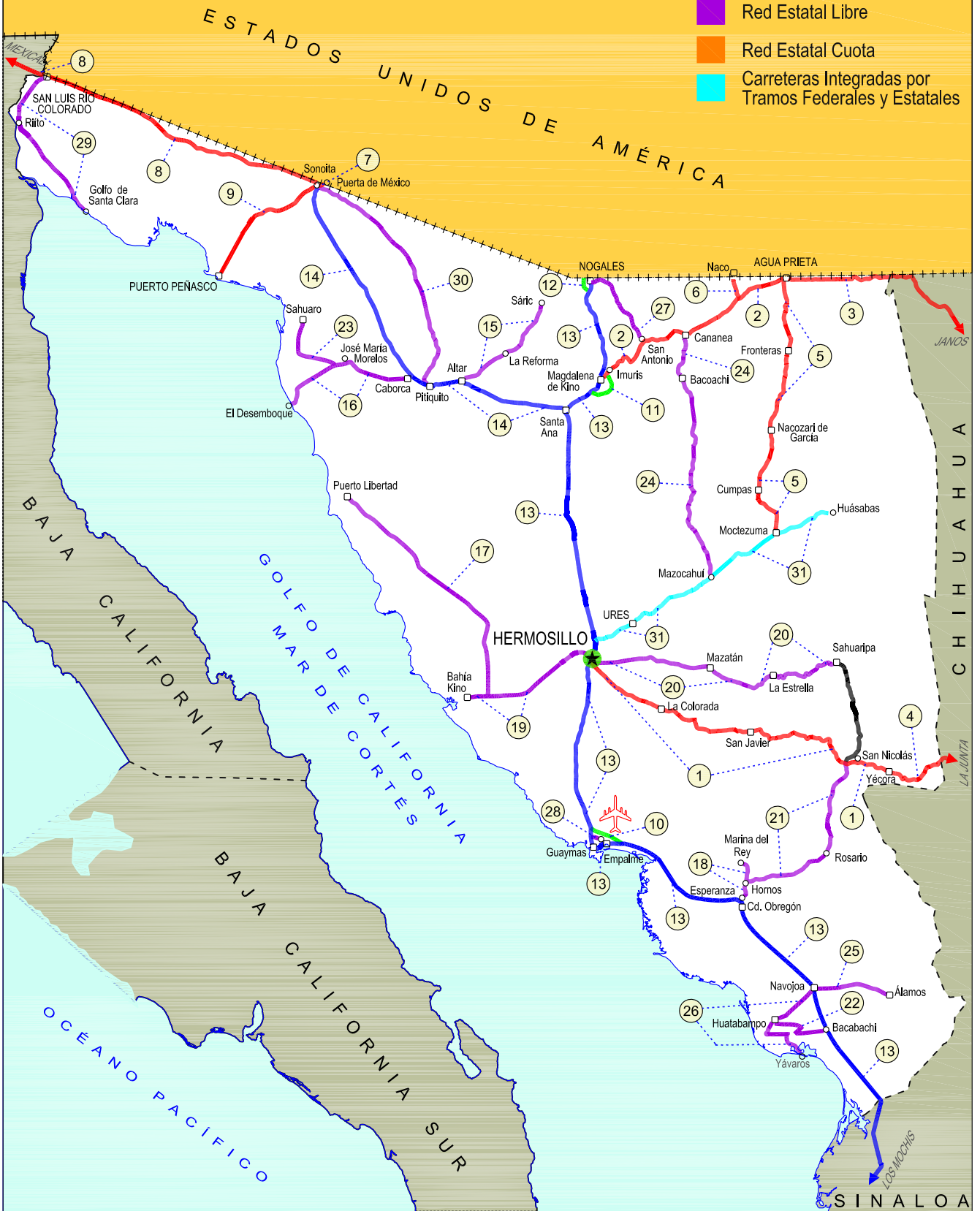
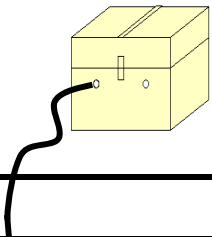


26 SONORA

SECRETARÍA DE COMUNICACIONES Y TRANSPORTES
DIRECCIÓN GENERAL DE SERVICIOS TÉCNICOS

- ① --- Número Índice
- Red Federal Libre
- Red Federal Cuota
- Red Federal Integrada por Tramos Libres y de Cuota
- Red Estatal Libre
- Red Estatal Cuota
- Carreteras Integradas por Tramos Federales y Estatales





SONORA

NO. INDICE	CARRETERA	RUTA
---RED FEDERAL LIBRE---		
1	Hermosillo - Yécora	MEX-016
2	Imuris - Agua Prieta	MEX-002
3	Janos - Agua Prieta	MEX-002
4	La Junta - Yécora	MEX-016
5	Moctezuma - Agua Prieta	MEX-017
6	Ramal a Naco	MEX-002
7	Ramal a Puerta de México	MEX-002
8	Sonoita - Mexicali	MEX-002
9	Sonoita - Puerto Peñasco	MEX-002
---RED FEDERAL DE CUOTA---		
10	Libramiento de Empalme (Cuota)	MEX-015D
11	Libramiento de Magdalena de Kino (Cuota)	MEX-015D
12	Libramiento de Nogales (Cuota)	MEX-15D
---RED FEDERAL INTEGRADA POR TRAMOS LIBRES Y DE CUOTA---		
13	Est. Don - Nogales (Cuota)	MEX-015D-015
14	Santa Ana - Sonoita	MEX-002D-MEX
---RED ESTATAL LIBRE---		
15	Altar - Sáric	SON-064
16	Caborca - El Desemboque	SON-037
17	Calle 36 Norte - Puerto de La Libertad	SON-029
18	Esperanza - Presa Álvaro Obregón	SON-117
19	Hermosillo - Bahía Kino	SON-100
20	Hermosillo - Sahuaripa	SON-020
21	Hornos - San Nicolás	SON-012
22	Huatabampo - Bacabachi	SON-176
23	La Alameda - El Sahuaro	SON-037
24	Mazocahui - Cananea	SON-118
25	Navojoa - Álamos	SON-013
26	Navojoa - Yavaros	SON-056
27	Nogales - San Antonio	SON
28	Ramal a Aeropuerto de Guaymas	SON
29	San Luis Río Colorado - Golfo de Santa Clara	SON-040
30	Sonoita - Pitiquito	SON
---CARRETERAS INTEGRADAS POR TRAMOS FEDERALES Y ESTATALES---		
31	T. C. (Hermosillo - Nogales) - Huásabas	MEX-014-SON

SONORA

1 CARR : Hermosillo - Yécora

CLAVE: 26251

RUTA: MEX-016

AÑO : 2014

LUGAR	ESTACION				CLASIFICACION VEHICULAR EN PORCIENTO													COORDENADAS		
	KM	TE	SC	TDPA	M	A	B	C2	C3	T3S2	T3S3	T3S2R4	OTROS	A	B	C	K'	D	LATITUD	LONGITUD
T. C. Cd. Obregón - Hermosillo	0.00																			
T. Izq. Sahuaripa	4.00	3	1	5270	1.8	76.1	2.9	8.2	3.2	3.7	2.3	0.8	1.0	77.9	2.9	19.2	0.102	0.509	29.004933	-110.913061
T. Izq. Sahuaripa	4.00	3	2	5390	1.4	75.1	3.0	8.8	3.5	4.0	2.3	0.9	1.0	76.5	3.0	20.5	0.100	0.509	29.004937	-110.913071
La Colorada	47.00	3	0	734	1.7	71.2	2.1	11.1	3.8	3.8	2.4	2.0	1.9	72.9	2.1	25.0	0.087	0.508	28.807092	-110.576830
Tecoripa	138.00	3	0	561	0.2	65.8	7.0	10.2	6.1	6.5	2.6	1.2	0.4	66.0	7.0	27.0	0.095	0.501	28.621325	-109.945315
Yécora	250.60																			

2 CARR : Imuris - Agua Prieta

CLAVE: 26079

RUTA: MEX-002

AÑO : 2014

LUGAR	ESTACION				CLASIFICACION VEHICULAR EN PORCIENTO													COORDENADAS		
	KM	TE	SC	TDPA	M	A	B	C2	C3	T3S2	T3S3	T3S2R4	OTROS	A	B	C	K'	D	LATITUD	LONGITUD
Imuris	0.00	3	0	3426	0.7	56.5	3.9	8.8	2.0	17.8	4.6	4.6	1.1	57.2	3.9	38.9	0.059	0.543	30.784693	-110.849003
T. Der. Cananea	80.93	1	0	5656	0.3	63.7	3.1	9.0	2.3	14.3	3.5	3.0	0.8	64.0	3.1	32.9	0.072	0.512	30.997242	-110.289716
T. Der. Cananea	80.93	3	1	3592	0.5	68.9	2.7	8.7	3.4	10.9	2.0	2.4	0.5	69.4	2.7	27.9	0.071	0.507	30.994730	-110.256379
T. Der. Cananea	80.93	3	2	3700	0.6	66.0	3.0	9.4	3.9	11.8	2.2	2.5	0.6	66.6	3.0	30.4	0.072	0.507	30.994730	-110.256379
Agua Prieta	164.67	1	1	2228	0.4	62.1	3.8	9.9	2.7	14.1	3.5	2.9	0.6	62.5	3.8	33.7	0.063	0.502	31.311538	-109.589777
Agua Prieta	164.67	1	2	2228	0.4	62.1	3.8	9.9	2.7	14.1	3.5	2.9	0.6	62.5	3.8	33.7	0.063	0.502	31.311538	-109.589777

3 CARR : Janos - Agua Prieta

CLAVE: 00220

RUTA: MEX-002

AÑO : 2014

LUGAR	ESTACION				CLASIFICACION VEHICULAR EN PORCIENTO													COORDENADAS		
	KM	TE	SC	TDPA	M	A	B	C2	C3	T3S2	T3S3	T3S2R4	OTROS	A	B	C	K'	D	LATITUD	LONGITUD
T. C. Cd. Juárez - Janos	0.00	3	0	3727	0.5	53.6	3.8	9.0	1.7	21.1	3.8	5.6	0.9	54.1	3.8	42.1	0.065	0.505	30.889975	-108.216227
Los Mimbres	56.00	3	0	1893	0.4	48.9	4.0	8.6	2.2	21.6	6.6	6.5	1.2	49.3	4.0	46.7	0.068	0.506	31.272017	-108.615862
Lim. Edos. Term. Chih. Ppia. Son.	78.00																			
Agua Prieta	160.00	1	0	2712	0.3	60.8	3.8	4.8	1.2	17.5	4.1	6.3	1.2	61.1	3.8	35.1	0.067	0.602	31.322422	-109.508036

4 CARR : La Junta - Yécora

CLAVE: 00065

RUTA: MEX-016

AÑO : 2014

LUGAR	ESTACION				CLASIFICACION VEHICULAR EN PORCIENTO													COORDENADAS		
	KM	TE	SC	TDPA	M	A	B	C2	C3	T3S2	T3S3	T3S2R4	OTROS	A	B	C	K'	D	LATITUD	LONGITUD
T. C. Chihuahua - Madera	0.00	3	0	4457	0.6	75.4	1.6	15.5	1.5	3.6	1.1	0.2	0.5	76.0	1.6	22.4	0.083	0.503	28.474395	-107.317521
T. Izq. San Juanito	16.00	1	0	2442	0.0	66.2	2.2	20.6	2.8	5.3	2.1	0.4	0.4	66.2	2.2	31.6	0.114	0.512	28.388735	-107.439660
T. Izq. San Juanito	16.00	3	0	1232	0.3	64.0	1.4	22.5	2.7	5.4	2.6	0.2	0.9	64.3	1.4	34.3	0.085	0.540	28.390898	-107.441843
Tomochi	70.00	3	0	1329	0.8	59.5	2.0	25.8	3.2	5.3	2.2	0.6	0.6	60.3	2.0	37.7	0.121	0.506	28.352620	-107.852570

SONORA

4 CARR: La Junta - Yécora

CLAVE: 00065

RUTA: MEX-016

AÑO: 2014

LUGAR	ESTACION				CLASIFICACION VEHICULAR EN PORCIENTO														COORDENADAS		
	KM	TE	SC	TDPA	M	A	B	C2	C3	T3S2	T3S3	T3S2R4	OTROS	A	B	C	K'	D	LATITUD	LONGITUD	
Lim. Edos. Term. Chih. Ppia. Son.	190.00																				
Yécora	253.00	1	0	806	1.7	61.0	11.3	9.4	3.0	8.9	3.9	0.0	0.8	62.7	11.3	26.0	0.151	0.506	28.366640	-108.923165	

5 CARR: Moctezuma - Agua Prieta

CLAVE: 26027

RUTA: MEX-017

AÑO: 2014

LUGAR	ESTACION				CLASIFICACION VEHICULAR EN PORCIENTO														COORDENADAS	
	KM	TE	SC	TDPA	M	A	B	C2	C3	T3S2	T3S3	T3S2R4	OTROS	A	B	C	K'	D	LATITUD	LONGITUD
Moctezuma	0.00	3	0	2438	1.3	90.9	0.0	1.7	1.2	1.7	0.6	1.2	1.4	92.2	0.0	7.8	0.091	0.521	29.818966	-109.676789
Nacozeni de García	81.00	3	0	2192	0.4	85.2	0.0	2.6	1.1	2.9	4.6	1.2	2.0	85.6	0.0	14.4	0.088	0.503	30.389577	-109.695005
Turicachi	111.00	1	0	1858	0.1	77.2	2.4	9.8	1.3	3.2	2.5	2.4	1.1	77.3	2.4	20.3	0.093	0.501	30.662566	-109.595049
T. C. Imuris - Agua Prieta	197.60	1	0	3708	1.3	75.9	1.1	11.9	2.4	3.9	1.5	1.5	0.5	77.2	1.1	21.7	0.081	0.531	31.297775	-109.581889

6 CARR: Ramal a Naco

CLAVE: 26579

RUTA: MEX-002

AÑO: 2014

LUGAR	ESTACION				CLASIFICACION VEHICULAR EN PORCIENTO														COORDENADAS		
	KM	TE	SC	TDPA	M	A	B	C2	C3	T3S2	T3S3	T3S2R4	OTROS	A	B	C	K'	D	LATITUD	LONGITUD	
T. C. Imuris - Agua Prieta	0.00	3	0	1394	0.8	94.3	0.0	2.1	0.7	1.1	0.2	0.0	0.8	95.1	0.0	4.9	0.093	0.500	31.206444	-109.908355	
Naco	14.00																				

7 CARR: Ramal a Puerta de México

CLAVE: 26577

RUTA: MEX-002

AÑO: 2014

LUGAR	ESTACION				CLASIFICACION VEHICULAR EN PORCIENTO														COORDENADAS		
	KM	TE	SC	TDPA	M	A	B	C2	C3	T3S2	T3S3	T3S2R4	OTROS	A	B	C	K'	D	LATITUD	LONGITUD	
T. C. Sonoita - Mexicali	0.00	3	0	11345	0.6	96.5	0.1	0.1	1.6	0.1	0.1	0.0	0.9	97.1	0.1	2.8	0.076	0.516	31.868589	-112.832590	
Frontera E.U.A	3.30																				

8 CARR: Sonoita - Mexicali

CLAVE: 00081

RUTA: MEX-002

AÑO: 2014

LUGAR	ESTACION				CLASIFICACION VEHICULAR EN PORCIENTO														COORDENADAS	
	KM	TE	SC	TDPA	M	A	B	C2	C3	T3S2	T3S3	T3S2R4	OTROS	A	B	C	K'	D	LATITUD	LONGITUD
Sonoita	0.00	3	0	5226	0.7	66.0	5.1	7.3	1.4	13.7	3.3	2.3	0.2	66.7	5.1	28.2	0.086	0.525	31.881839	-112.855265
Los Vidrios	58.75	3	0	3833	1.4	45.1	7.3	7.5	4.5	22.6	4.1	5.9	1.6	46.5	7.3	46.2	0.050	0.507	32.037823	-113.452393
San Luis Río Colorado	191.80	1	0	3986	0.5	58.3	7.3	1.3	1.8	18.9	3.9	6.4	1.6	58.8	7.3	33.9	0.066	0.552	32.450197	-114.672022
San Luis Río Colorado	191.80	3	1	9813	1.1	61.2	4.4	7.0	2.3	17.6	2.6	2.8	1.0	62.3	4.4	33.3	0.060	0.505	32.487964	-114.797056
San Luis Río Colorado	191.80	3	2	10010	2.0	56.5	5.0	7.5	2.6	19.5	2.8	3.1	1.0	58.5	5.0	36.5	0.056	0.505	32.488199	-114.797636

SONORA

8 CARR : Sonoita - Mexicali

CLAVE: 00081

RUTA: MEX-002

AÑO: 2014

LUGAR	ESTACION				CLASIFICACION VEHICULAR EN PORCIENTO													COORDENADAS		
	KM	TE	SC	TDPA	M	A	B	C2	C3	T3S2	T3S3	T3S2R4	OTROS	A	B	C	K'	D	LATITUD	LONGITUD
Lim. Edos. Term. Son. Ppia. B.C.	203.69																			
X. C. Mexicali - Algodones	206.78	1	1	8947	1.0	82.8	3.3	5.2	0.5	4.0	0.8	1.6	0.8	83.8	3.3	12.9	0.079	0.523	32.497314	-114.827777
X. C. Mexicali - Algodones	206.78	1	2	9811	0.8	80.6	3.5	5.6	0.7	5.7	0.8	1.7	0.6	81.4	3.5	15.1	0.074	0.523	32.497313	-114.827778
X. C. Mexicali - Algodones	206.78	3	1	7351	0.4	86.2	2.3	0.8	0.8	5.5	0.9	1.9	1.2	86.6	2.3	11.1	0.090	0.511	32.553502	-115.048214
X. C. Mexicali - Algodones	206.78	3	2	7695	0.4	84.8	2.4	0.9	0.9	6.5	0.8	2.0	1.3	85.2	2.4	12.4	0.076	0.511	32.553502	-115.048214
T. Izq. Ejido Hermosillo	214.80	3	1	6938	0.3	85.9	2.7	1.0	0.8	5.5	0.8	1.8	1.2	86.2	2.7	11.1	0.100	0.511	32.527454	-114.928388
T. Izq. Ejido Hermosillo	214.80	3	2	6652	0.3	84.3	2.8	1.0	0.9	6.6	0.7	1.9	1.5	84.6	2.8	12.6	0.085	0.511	32.527483	-114.928464
Ejido Monterrey	228.63	3	1	9816	0.3	86.8	2.0	1.2	1.0	4.7	0.8	1.7	1.5	87.1	2.0	10.9	0.091	0.508	32.551795	-115.080997
Ejido Monterrey	228.63	3	2	9519	0.3	86.5	2.0	1.4	1.1	4.5	0.8	1.6	1.8	86.8	2.0	11.2	0.081	0.508	32.551795	-115.080998
X. C. Mexicali - Algodones	256.47	1	1	14798	0.8	83.4	1.9	7.3	1.1	3.2	0.4	0.6	1.3	84.2	1.9	13.9	0.068	0.506	32.565185	-115.325556
X. C. Mexicali - Algodones	256.47	1	2	15155	0.8	82.9	1.8	8.1	1.1	3.2	0.5	0.6	1.0	83.7	1.8	14.5	0.072	0.506	32.565169	-115.325574
T. C. Mexicali - San Felipe	265.12																			

9 CARR : Sonoita - Puerto Peñasco

CLAVE: 26232

RUTA: MEX-002

AÑO: 2014

LUGAR	ESTACION				CLASIFICACION VEHICULAR EN PORCIENTO													COORDENADAS		
	KM	TE	SC	TDPA	M	A	B	C2	C3	T3S2	T3S3	T3S2R4	OTROS	A	B	C	K'	D	LATITUD	LONGITUD
Sonoita	0.00	3	0	2089	0.9	88.3	1.0	4.6	0.6	2.3	0.8	0.9	0.6	89.2	1.0	9.8	0.089	0.525	31.863480	-112.870586
Puerto Peñasco	100.40																			

10 CARR : Libramiento de Empalme (Cuota)

CLAVE: 26256

RUTA: MEX-015D

AÑO: 2014

LUGAR	ESTACION				CLASIFICACION VEHICULAR EN PORCIENTO													COORDENADAS		
	KM	TE	SC	TDPA	M	A	B	C2	C3	T3S2	T3S3	T3S2R4	OTROS	A	B	C	K'	D	LATITUD	LONGITUD
T. C. Cd. Obregón - Hermosillo	0.00	3	1	3318	4.3	62.4	5.9	8.3	2.4	9.1	2.2	4.4	1.0	66.7	5.9	27.4	0.059	0.512	27.956344	-110.753266
T. C. Cd. Obregón - Hermosillo	0.00	3	2	3476	4.0	59.5	6.2	9.3	2.5	9.6	2.4	5.2	1.3	63.5	6.2	30.3	0.068	0.512	27.956344	-110.753266
T. C. Cd. Obregón - Hermosillo	21.50	1	1	3192	0.8	63.5	6.5	8.6	2.3	9.0	2.8	5.4	1.1	64.3	6.5	29.2	0.068	0.515	28.038360	-110.934600
T. C. Cd. Obregón - Hermosillo	21.50	1	2	3011	0.3	59.6	6.9	10.3	2.5	10.2	3.2	5.8	1.2	59.9	6.9	33.2	0.084	0.515	28.038359	-110.934596

11 CARR : Libramiento de Magdalena de Kino (Cuota)

CLAVE:

RUTA: MEX-015D

AÑO: 2014

LUGAR	ESTACION				CLASIFICACION VEHICULAR EN PORCIENTO													COORDENADAS		
	KM	TE	SC	TDPA	M	A	B	C2	C3	T3S2	T3S3	T3S2R4	OTROS	A	B	C	K'	D	LATITUD	LONGITUD
T. C. Hermosillo - Nogales	183.43	3	1	3223	1.5	54.1	4.1	9.6	2.0	19.2	3.1	4.7	1.7	55.6	4.1	40.3	0.066	0.525	30.619537	-110.987842
T. C. Hermosillo - Nogales	183.43	3	2	3567	1.5	53.8	4.8	10.8	2.2	16.5	3.3	5.3	1.8	55.3	4.8	39.9	0.060	0.525	30.619533	-110.987839

SONORA

11 CARR: Libramiento de Magdalena de Kino (Cuota)

CLAVE:

RUTA: MEX-015D

AÑO: 2014

LUGAR	ESTACION				CLASIFICACION VEHICULAR EN PORCIENTO													COORDENADAS		
	KM	TE	SC	TDPA	M	A	B	C2	C3	T3S2	T3S3	T3S2R4	OTROS	A	B	C	K'	D	LATITUD	LONGITUD
T. C. Hermosillo - Nogales	190.00	1	1	3339	0.7	53.4	3.7	9.9	1.6	22.4	2.8	4.8	0.7	54.1	3.7	42.2	0.073	0.508	30.665665	-110.917424
T. C. Hermosillo - Nogales	190.00	1	2	3229	0.4	48.2	4.0	11.2	2.0	24.8	3.0	5.5	0.9	48.6	4.0	47.4	0.095	0.508	30.665662	-110.917430

12 CARR: Libramiento de Nogales (Cuota)

CLAVE: 26100

RUTA: MEX-15D

AÑO: 2014

LUGAR	ESTACION				CLASIFICACION VEHICULAR EN PORCIENTO													COORDENADAS		
	KM	TE	SC	TDPA	M	A	B	C2	C3	T3S2	T3S3	T3S2R4	OTROS	A	B	C	K'	D	LATITUD	LONGITUD
T. C. Hermosillo - Nogales	0.00	3	1	2958	0.5	51.7	0.4	6.2	3.6	35.2	1.3	0.3	0.8	52.2	0.4	47.4	0.127	0.522	31.230915	-110.966530
T. C. Hermosillo - Nogales	0.00	3	2	3236	0.3	49.8	2.2	6.5	4.0	33.6	1.4	0.3	1.9	50.1	2.2	47.7	0.118	0.522	31.230920	-110.966530
Caseta de Cobro Nogales	4.50	2	1	1317	0.1	69.9	0.0	2.3	0.9	26.5	0.1	0.0	0.2	70.0	0.0	30.0	0.184	0.500	31.247637	-110.972542
Caseta de Cobro Nogales	4.50	2	2	1317	0.1	69.9	0.0	2.3	0.9	26.5	0.1	0.0	0.2	70.0	0.0	30.0	0.184	0.500	31.247637	-110.972542
Frontera E.U.A.	12.50	1	1	1491	0.6	34.2	2.8	9.7	4.0	41.0	2.6	2.9	2.2	34.8	2.8	62.4	0.128	0.564	31.303139	-110.980266
Frontera E.U.A.	12.50	1	2	1929	0.2	35.3	1.9	9.0	3.8	44.2	2.0	1.9	1.7	35.5	1.9	62.6	0.160	0.564	31.303139	-110.980270

13 CARR: Est. Don - Nogales (Cuota)

CLAVE: 26444

RUTA: MEX-015D-015

AÑO: 2014

LUGAR	ESTACION				CLASIFICACION VEHICULAR EN PORCIENTO													COORDENADAS		
	KM	TE	SC	TDPA	M	A	B	C2	C3	T3S2	T3S3	T3S2R4	OTROS	A	B	C	K'	D	LATITUD	LONGITUD
T. C. Topolobampo - Choix	0.00	3	1	9669	1.5	73.1	4.1	5.5	2.6	9.1	2.9	1.2	0.0	74.6	4.1	21.3	0.088	0.564	25.833410	-108.973623
T. C. Topolobampo - Choix	0.00	3	2	7474	1.6	70.6	4.3	5.6	3.1	9.7	3.4	1.7	0.0	72.2	4.3	23.5	0.085	0.564	25.833410	-108.973623
T. Izq. Ahome	17.13	3	1	7470	3.6	74.2	4.6	4.4	1.9	7.2	1.9	1.5	0.7	77.8	4.6	17.6	0.073	0.501	25.943980	-109.052975
T. Izq. Ahome	17.13	3	2	7434	2.6	73.5	4.7	4.9	2.0	7.9	2.0	1.7	0.7	76.1	4.7	19.2	0.079	0.501	25.943980	-109.052975
T. Izq. Coahuilbampo	19.00	1	1	7423	9.3	64.8	4.9	5.6	3.9	2.5	1.0	3.2	4.8	74.1	4.9	21.0	0.063	0.521	25.959165	-109.053626
T. Izq. Coahuilbampo	19.00	1	2	6829	5.3	69.6	4.2	2.3	3.8	6.8	2.2	3.7	2.1	74.9	4.2	20.9	0.076	0.521	25.959163	-109.053623
T. Izq. Coahuilbampo	19.00	3	1	5832	1.5	70.9	4.8	4.8	3.1	8.6	2.1	3.6	0.6	72.4	4.8	22.8	0.070	0.502	25.961930	-109.052681
T. Izq. Coahuilbampo	19.00	3	2	5878	1.5	68.4	5.6	5.3	3.2	9.0	2.5	3.8	0.7	69.9	5.6	24.5	0.060	0.502	25.961928	-109.052681
Poblado Chico	50.00	3	1	4516	3.7	70.1	4.8	4.3	1.8	8.5	2.4	3.4	1.0	73.8	4.8	21.4	0.074	0.503	26.228086	-109.054612
Poblado Chico	50.00	3	2	4567	2.8	64.0	5.1	8.8	2.2	9.5	2.9	3.7	1.0	66.8	5.1	28.1	0.080	0.503	26.228083	-109.054606
T. Der. El Fuerte	54.80	1	1	4563	1.8	66.3	7.7	1.2	3.7	6.5	3.6	6.7	2.5	68.1	7.7	24.2	0.074	0.504	26.261543	-109.044817
T. Der. El Fuerte	54.80	1	2	4634	1.3	66.7	7.7	1.1	1.8	12.2	1.9	4.9	2.4	68.0	7.7	24.3	0.071	0.504	26.261543	-109.044816
T. Der. El Fuerte	54.80	3	1	5456	2.1	68.9	5.3	4.2	2.5	9.4	2.5	4.1	1.0	71.0	5.3	23.7	0.064	0.504	26.276966	-109.040398
T. Der. El Fuerte	54.80	3	2	5447	1.5	67.0	5.8	4.8	2.9	10.0	2.5	4.5	1.0	68.5	5.8	25.7	0.065	0.504	26.276965	-109.040397
Lim. Edos. Term. Sin. Ppia. Son.	69.80																			
T. Izq. Huatabampo	128.50	1	1	3073	1.8	66.3	5.9	4.5	3.3	9.6	3.1	4.5	1.0	68.1	5.9	26.0	0.067	0.516	26.836796	-109.366158
T. Izq. Huatabampo	128.50	1	2	3180	1.3	63.9	6.1	4.6	3.6	11.1	3.2	5.1	1.1	65.2	6.1	28.7	0.068	0.516	26.836794	-109.366158

SONORA

13 CARR: Est. Don - Nogales (Cuota)

CLAVE: 26444

RUTA: MEX-015D-015

AÑO: 2014

LUGAR	ESTACION				CLASIFICACION VEHICULAR EN PORCIENTO										COORDENADAS					
	KM	TE	SC	TDPA	M	A	B	C2	C3	T3S2	T3S3	T3S2R4	OTROS	A	B	C	K'	D	LATITUD	LONGITUD
Caseta de Cobro Estacion Don (La Jaula)	129.90	2	1	2299	0.2	46.7	9.3	3.7	3.7	23.8	2.5	8.9	1.2	46.9	9.3	43.8	0.086	0.500	26.849800	-109.373287
Caseta de Cobro Estacion Don (La Jaula)	129.90	2	2	2299	0.2	46.7	9.3	3.7	3.7	23.8	2.5	8.9	1.2	46.9	9.3	43.8	0.086	0.500	26.849800	-109.373287
Navojoa	155.00	1	1	6434	1.1	74.5	4.3	4.4	1.9	6.8	2.4	3.4	1.2	75.6	4.3	20.1	0.079	0.502	27.035458	-109.435624
Navojoa	155.00	1	2	6450	1.0	70.7	4.8	5.7	2.4	8.7	2.9	3.2	0.6	71.7	4.8	23.5	0.079	0.502	27.035464	-109.435637
Navojoa	155.00	3	1	8289	7.0	72.1	4.4	4.6	1.4	5.6	2.0	2.4	0.5	79.1	4.4	16.5	0.067	0.505	27.105021	-109.447889
Navojoa	155.00	3	2	8480	6.5	70.0	5.1	5.1	1.4	6.7	2.0	2.6	0.6	76.5	5.1	18.4	0.064	0.505	27.105019	-109.447890
T. Izq. Villa Juárez	167.25	3	1	5241	1.2	70.6	5.4	2.6	2.5	8.0	2.8	4.9	2.0	71.8	5.4	22.8	0.077	0.510	27.155647	-109.508173
T. Izq. Villa Juárez	167.25	3	2	5033	1.3	70.7	5.8	2.7	2.2	10.2	1.7	4.1	1.3	72.0	5.8	22.2	0.067	0.510	27.155647	-109.508173
Caseta de Cobro Fundición	195.80	2	1	3012	0.2	54.2	8.2	3.9	3.2	19.7	2.0	7.6	1.0	54.4	8.2	37.4	0.086	0.500	27.320379	-109.719785
Caseta de Cobro Fundición	195.80	2	2	3012	0.2	54.2	8.2	3.9	3.2	19.7	2.0	7.6	1.0	54.4	8.2	37.4	0.086	0.500	27.320379	-109.719785
T. Der. Fundición	196.30	1	1	4758	1.3	73.8	5.1	4.4	1.9	9.1	1.6	2.8	0.0	75.1	5.1	19.8	0.074	0.503	27.329475	-109.731142
T. Der. Fundición	196.30	1	2	4693	1.5	70.4	5.8	4.8	2.1	10.0	1.7	3.7	0.0	71.9	5.8	22.3	0.072	0.503	27.324556	-109.726717
Cd. Obregón	222.70																			
Cd. Obregón	222.70	1	1	14673	1.1	73.6	3.9	4.5	2.5	7.9	2.4	3.2	0.9	74.7	3.9	21.4	0.073	0.501	27.462457	-109.903419
Cd. Obregón	222.70	1	2	14689	0.7	71.1	4.5	4.9	2.9	8.5	2.7	3.6	1.1	71.8	4.5	23.7	0.078	0.501	27.462457	-109.903419
Esperanza	230.66	1	1	10892	1.2	71.5	4.9	8.0	1.2	5.5	3.1	3.5	1.1	72.7	4.9	22.4	0.065	0.505	27.563845	-109.927154
Esperanza	230.66	1	2	10939	1.2	68.6	5.4	8.7	1.2	6.1	3.6	3.9	1.3	69.8	5.4	24.8	0.069	0.505	27.563845	-109.927154
Esperanza	230.66	3	1	4527	1.3	61.8	7.1	9.2	3.5	9.3	2.8	3.8	1.2	63.1	7.1	29.8	0.069	0.500	27.596509	-109.931471
Esperanza	230.66	3	2	4525	1.4	56.6	8.3	10.8	3.9	10.7	3.1	3.8	1.4	58.0	8.3	33.7	0.066	0.500	27.596513	-109.931470
Caseta de Cobro Esperanza	233.40	2	1	2626	0.2	50.6	9.2	3.7	3.0	21.8	2.0	8.4	1.1	50.8	9.2	40.0	0.086	0.500	27.603715	-109.939118
Caseta de Cobro Esperanza	233.40	2	2	2626	0.2	50.6	9.2	3.7	3.0	21.8	2.0	8.4	1.1	50.8	9.2	40.0	0.086	0.500	27.603715	-109.939118
T. Der. Estación Corral	236.50	1	1	3609	0.8	59.6	8.6	9.2	3.2	10.6	2.7	4.2	1.1	60.4	8.6	31.0	0.071	0.509	27.616087	-109.951708
T. Der. Estación Corral	236.50	1	2	3737	0.9	55.9	8.8	10.0	3.5	11.7	3.1	4.9	1.2	56.8	8.8	34.4	0.072	0.509	27.616086	-109.951703
T. Der. Estación Corral	236.50	3	1	3700	1.7	67.4	6.0	6.4	2.4	8.5	3.2	4.0	0.4	69.1	6.0	24.9	0.065	0.510	27.618371	-109.963640
T. Der. Estación Corral	236.50	3	2	3846	2.2	62.3	6.1	7.1	2.8	11.2	3.3	4.2	0.8	64.5	6.1	29.4	0.066	0.510	27.618369	-109.963637
T. Izq. Bécum	248.16	1	1	3612	0.9	62.3	8.7	1.1	2.0	13.4	3.8	6.2	1.6	63.2	8.7	28.1	0.084	0.513	27.599015	-110.076164
T. Izq. Bécum	248.16	1	2	3430	0.6	59.2	9.3	1.5	2.1	15.9	2.4	6.3	2.7	59.8	9.3	30.9	0.100	0.513	27.599015	-110.076164
T. Izq. Bécum	248.16	3	1	4998	0.8	65.2	5.9	5.9	2.0	11.1	3.4	4.9	0.8	66.0	5.9	28.1	0.088	0.533	27.597563	-110.084062
T. Izq. Bécum	248.16	3	2	5708	0.4	70.5	4.2	5.5	3.9	7.4	2.0	4.6	1.5	70.9	4.2	24.9	0.090	0.533	27.597563	-110.084063
Vícam	269.98	3	1	5368	1.9	66.0	6.1	7.6	2.0	9.2	2.6	3.7	0.9	67.9	6.1	26.0	0.059	0.509	27.651519	-110.311800
Vícam	269.98	3	2	5545	1.7	61.3	6.8	8.8	2.1	10.8	2.9	4.5	1.1	63.0	6.8	30.2	0.067	0.509	27.651520	-110.311799
T. Izq. Pótam	280.10	1	1	4504	2.0	66.1	6.7	8.0	2.0	8.0	2.0	4.2	1.0	68.1	6.7	25.2	0.064	0.514	27.697495	-110.366180
T. Izq. Pótam	280.10	1	2	4764	0.9	64.0	7.3	9.2	2.2	8.7	2.2	4.4	1.1	64.9	7.3	27.8	0.082	0.514	27.697498	-110.366184
T. Izq. Pótam	280.10	3	1	4579	1.2	63.6	7.0	8.8	2.7	9.3	2.7	3.8	0.9	64.8	7.0	28.2	0.082	0.526	27.704577	-110.371027
T. Izq. Pótam	280.10	3	2	5089	0.3	61.5	7.4	9.1	3.2	10.3	2.7	4.4	1.1	61.8	7.4	30.8	0.079	0.526	27.704582	-110.371028

SONORA

13 CARR: Est. Don - Nogales (Cuota)

CLAVE: 26444

RUTA: MEX-015D-015

AÑO: 2014

LUGAR	ESTACION				CLASIFICACION VEHICULAR EN PORCIENTO														COORDENADAS	
	KM	TE	SC	TDPA	M	A	B	C2	C3	T3S2	T3S3	T3S2R4	OTROS	A	B	C	K'	D	LATITUD	LONGITUD
T. Der. Libramiento de Guaymas	330.50	1	1	5979	0.8	66.9	4.9	9.1	2.1	8.2	2.7	4.5	0.8	67.7	4.9	27.4	0.063	0.503	27.951438	-110.740802
T. Der. Libramiento de Guaymas	330.50	1	2	6051	0.6	63.1	5.5	9.8	2.3	9.8	3.2	4.9	0.8	63.7	5.5	30.8	0.073	0.503	27.951437	-110.740808
T. Der. Libramiento de Guaymas	330.50	3	0	5734	1.0	70.4	5.2	10.2	1.6	6.1	3.9	1.0	0.6	71.4	5.2	23.4	0.077	0.505	27.952314	-110.769619
Empalme	337.72	1	0	5979	0.9	71.5	4.7	10.1	1.7	5.7	3.9	1.0	0.5	72.4	4.7	22.9	0.077	0.506	27.953184	-110.797911
Empalme	337.72	3	1	8339	1.2	76.8	3.4	7.8	3.1	4.5	2.5	0.2	0.5	78.0	3.4	18.6	0.089	0.507	27.955732	-110.831283
Empalme	337.72	3	2	8593	2.1	73.6	3.6	9.2	3.2	5.1	2.5	0.2	0.5	75.7	3.6	20.7	0.071	0.507	27.955733	-110.831281
T. Izq. San Carlos	355.70	1	1	6907	1.2	78.0	4.0	9.5	1.2	4.0	0.8	0.9	0.4	79.2	4.0	16.8	0.087	0.520	27.981685	-110.939484
T. Izq. San Carlos	355.70	1	2	6383	1.6	76.2	4.1	10.1	1.2	4.5	1.0	0.9	0.4	77.8	4.1	18.1	0.081	0.520	27.981685	-110.939485
T. Izq. San Carlos	355.70	3	1	3335	1.5	76.6	4.2	9.1	1.5	4.4	1.1	1.6	0.0	78.1	4.2	17.7	0.085	0.505	27.993573	-110.939756
T. Izq. San Carlos	355.70	3	2	3401	1.5	74.7	4.5	9.8	2.2	4.6	1.2	1.5	0.0	76.2	4.5	19.3	0.101	0.505	27.993572	-110.939756
T. Izq. Bahía Kino	394.00	1	1	5453	0.6	69.9	4.9	7.7	2.6	8.3	1.8	3.4	0.8	70.5	4.9	24.6	0.074	0.500	28.316175	-111.041750
T. Izq. Bahía Kino	394.00	1	2	5448	0.4	66.6	5.5	9.1	3.0	8.9	1.9	3.7	0.9	67.0	5.5	27.5	0.071	0.500	28.316175	-111.041750
T. Izq. Bahía Kino	394.00	3	1	5133	1.2	72.7	4.9	4.9	1.3	9.3	1.8	3.9	0.0	73.9	4.9	21.2	0.085	0.510	28.322047	-111.041811
T. Izq. Bahía Kino	394.00	3	2	5340	1.2	69.3	5.6	6.0	1.5	10.4	1.7	4.1	0.2	70.5	5.6	23.9	0.113	0.510	28.322041	-111.041814
Hermosillo	473.70	1	1	6541	0.7	71.6	5.0	4.3	2.1	10.6	2.0	3.0	0.7	72.3	5.0	22.7	0.077	0.502	29.003138	-110.967180
Hermosillo	473.70	1	2	6595	1.1	67.6	5.8	4.7	2.2	12.1	2.3	3.5	0.7	68.7	5.8	25.5	0.070	0.502	29.003139	-110.967179
Hermosillo	473.70	3	1	15164	1.0	76.9	3.7	8.8	1.1	6.1	1.1	0.9	0.4	77.9	3.7	18.4	0.087	0.509	29.121184	-110.912129
Hermosillo	473.70	3	2	15746	0.5	75.9	4.5	9.3	1.2	6.3	1.1	0.8	0.4	76.4	4.5	19.1	0.083	0.509	29.121182	-110.912136
T. Der. Ures	482.30	1	1	12305	0.4	73.6	4.7	9.1	1.9	7.7	1.3	0.7	0.6	74.0	4.7	21.3	0.077	0.521	29.156012	-110.909473
T. Der. Ures	482.30	1	2	11301	0.4	69.9	5.2	10.7	2.2	8.7	1.5	0.8	0.6	70.3	5.2	24.5	0.113	0.521	29.155515	-110.909706
T. Der. Ures	482.30	3	1	6985	2.3	81.1	0.1	3.4	3.1	1.1	2.0	3.1	3.8	83.4	0.1	16.5	0.065	0.562	29.169239	-110.912516
T. Der. Ures	482.30	3	2	7180	5.4	70.8	0.0	1.9	5.8	1.3	3.5	1.7	9.6	76.2	0.0	23.8	0.078	0.562	29.169239	-110.912515
Caseta de Cobro Hermosillo	488.90	2	1	4786	0.1	66.8	5.2	3.1	1.9	14.7	1.8	5.7	0.7	66.9	5.2	27.9	0.086	0.500	29.220739	-110.930200
Caseta de Cobro Hermosillo	488.90	2	2	4786	0.1	66.8	5.2	3.1	1.9	14.7	1.8	5.7	0.7	66.9	5.2	27.9	0.086	0.500	29.220739	-110.930200
T. Der. Pesqueira	506.09	3	1	5086	0.3	63.1	5.5	9.1	1.8	13.4	1.6	4.2	1.0	63.4	5.5	31.1	0.082	0.507	29.374888	-110.973376
T. Der. Pesqueira	506.09	3	2	5226	0.3	60.3	5.1	9.0	1.9	16.5	1.7	4.1	1.1	60.6	5.1	34.3	0.078	0.507	29.374895	-110.973381
T. Der. Carbó	542.60	1	1	4784	20.4	60.8	0.0	1.3	3.8	1.8	2.1	6.0	3.8	81.2	0.0	18.8	0.064	0.502	29.684542	-111.042426
T. Der. Carbó	542.60	1	2	4824	9.7	68.4	0.0	2.5	3.7	1.3	2.9	5.1	6.4	78.1	0.0	21.9	0.083	0.502	29.684541	-111.042425
T. Der. Carbó	542.60	3	1	5279	0.4	55.8	6.1	10.6	1.0	15.3	2.6	6.0	2.2	56.2	6.1	37.7	0.093	0.502	29.691730	-111.044007
T. Der. Carbó	542.60	3	2	5332	0.1	52.7	6.3	11.5	1.4	15.5	2.9	6.3	3.3	52.8	6.3	40.9	0.092	0.502	29.691732	-111.044009
T. Izq. Benjamín Hill	599.10	1	1	5582	0.7	57.1	6.5	12.9	1.5	16.7	1.8	2.5	0.3	57.8	6.5	35.7	0.086	0.545	30.169828	-111.097142
T. Izq. Benjamín Hill	599.10	1	2	4654	0.8	53.8	6.8	14.4	1.6	18.3	1.7	2.6	0.0	54.6	6.8	38.6	0.059	0.545	30.169824	-111.097141
T. Izq. Benjamín Hill	599.10	3	1	5367	0.3	64.5	5.0	9.3	1.0	15.0	1.8	2.7	0.4	64.8	5.0	30.2	0.072	0.517	30.176730	-111.097231
T. Izq. Benjamín Hill	599.10	3	2	5021	0.2	63.7	5.2	9.9	0.9	15.4	1.6	2.7	0.4	63.9	5.2	30.9	0.086	0.517	30.176719	-111.097230
Santa Ana	640.97	1	1	5615	1.0	63.7	5.1	9.4	1.7	12.8	2.9	2.4	1.0	64.7	5.1	30.2	0.070	0.505	30.528088	-111.113888

SONORA

13 CARR: Est. Don - Nogales (Cuota)

CLAVE: 26444

RUTA: MEX-015D-015

AÑO: 2014

LUGAR	ESTACION				CLASIFICACION VEHICULAR EN PORCIENTO														COORDENADAS	
	KM	TE	SC	TDPA	M	A	B	C2	C3	T3S2	T3S3	T3S2R4	OTROS	A	B	C	K'	D	LATITUD	LONGITUD
Santa Ana	640.97	1	2	5718	0.5	60.8	5.4	9.9	2.0	14.5	3.1	2.8	1.0	61.3	5.4	33.3	0.088	0.505	30.527518	-111.114694
Santa Ana	640.97	3	1	5476	0.4	70.4	2.8	6.0	0.9	11.8	3.2	4.2	0.3	70.8	2.8	26.4	0.077	0.520	30.547750	-111.112000
Santa Ana	640.97	3	2	5937	0.3	69.9	1.9	7.0	1.2	11.3	3.0	5.0	0.4	70.2	1.9	27.9	0.084	0.520	30.547750	-111.112000
Magdalena de Kino	656.40	1	1	5717	5.0	60.0	4.5	8.3	3.0	10.6	3.1	4.1	1.4	65.0	4.5	30.5	0.055	0.522	30.621572	-110.982580
Magdalena de Kino	656.40	1	2	6229	5.8	55.4	4.8	9.3	3.4	12.0	3.3	4.4	1.6	61.2	4.8	34.0	0.051	0.522	30.621571	-110.982580
Magdalena de Kino	656.40	3	1	3459	0.8	78.4	4.2	9.0	0.9	5.3	0.6	0.5	0.3	79.2	4.2	16.6	0.077	0.506	30.647635	-110.946195
Magdalena de Kino	656.40	3	2	3543	0.9	77.5	4.6	9.7	0.8	5.3	0.5	0.5	0.2	78.4	4.6	17.0	0.071	0.506	30.647633	-110.946196
Imuris	682.70	1	1	6932	2.0	67.4	4.3	8.8	1.4	8.5	3.1	3.4	1.1	69.4	4.3	26.3	0.055	0.500	30.766686	-110.855122
Imuris	682.70	1	2	6932	2.7	62.7	4.5	10.5	1.6	9.5	3.4	3.8	1.3	65.4	4.5	30.1	0.053	0.500	30.766688	-110.855122
T. Der. Agua Prieta	683.20	3	1	5489	1.9	74.0	3.7	6.4	1.9	6.6	2.2	1.9	1.4	75.9	3.7	20.4	0.081	0.502	30.792619	-110.850508
T. Der. Agua Prieta	683.20	3	2	5540	3.3	70.2	4.3	6.6	2.2	7.3	2.5	2.1	1.5	73.5	4.3	22.2	0.064	0.502	30.792620	-110.850501
T. Izq. Sáric	729.60	1	1	9308	0.9	79.9	3.6	6.1	2.2	4.3	1.5	0.8	0.7	80.8	3.6	15.6	0.116	0.502	31.177014	-110.968512
T. Izq. Sáric	729.60	1	2	9398	0.9	79.8	3.5	6.0	2.3	4.5	1.4	0.8	0.8	80.7	3.5	15.8	0.102	0.502	31.177054	-110.968628
T. Izq. Sáric	729.60	3	1	8606	0.7	75.6	3.1	9.8	2.5	6.0	0.4	0.6	1.3	76.3	3.1	20.6	0.098	0.514	31.189394	-110.972360
T. Izq. Sáric	729.60	3	2	9107	0.8	75.2	2.4	9.8	2.6	6.9	0.4	0.7	1.2	76.0	2.4	21.6	0.104	0.514	31.189386	-110.972362
T. Izq. Libramiento de Nogales (Cuota)	734.70	3	1	10856	1.8	79.4	3.4	6.2	2.7	4.7	0.7	0.7	0.4	81.2	3.4	15.4	0.063	0.504	31.239452	-110.962899
T. Izq. Libramiento de Nogales (Cuota)	734.70	3	2	11052	1.8	77.2	3.9	7.1	3.0	5.0	0.8	0.8	0.4	79.0	3.9	17.1	0.068	0.504	31.239445	-110.962908
T. Izq. Periférico Luis Donaldo Colosio	740.70	1	1	22475	1.1	85.4	2.1	4.7	0.8	2.0	2.4	0.8	0.7	86.5	2.1	11.4	0.096	0.528	31.279294	-110.940450
T. Izq. Periférico Luis Donaldo Colosio	740.70	1	2	25188	0.9	83.2	2.6	5.6	0.9	1.9	3.1	0.9	0.9	84.1	2.6	13.3	0.089	0.528	31.279275	-110.940448
Nogales	743.70	1	1	17928	0.8	85.1	3.2	6.7	0.8	1.1	1.0	0.8	0.5	85.9	3.2	10.9	0.088	0.507	31.281452	-110.939053
Nogales	743.70	1	2	18467	0.7	83.5	3.6	7.6	1.0	1.1	1.0	1.0	0.5	84.2	3.6	12.2	0.082	0.507	31.281457	-110.939051

14 CARR: Santa Ana - Sonoita

CLAVE: 26080

RUTA: MEX-002D-MEX

AÑO: 2014

LUGAR	ESTACION				CLASIFICACION VEHICULAR EN PORCIENTO														COORDENADAS	
	KM	TE	SC	TDPA	M	A	B	C2	C3	T3S2	T3S3	T3S2R4	OTROS	A	B	C	K'	D	LATITUD	LONGITUD
Santa Ana	0.00	3	0	7392	0.6	59.8	9.7	11.9	1.5	10.0	2.7	3.0	0.8	60.4	9.7	29.9	0.058	0.509	30.551181	-111.121561
El Ocuca	31.55	1	1	5354	4.8	54.9	4.3	19.9	1.5	5.5	4.1	3.0	2.0	59.7	4.3	36.0	0.058	0.511	30.585681	-111.430437
El Ocuca	31.55	1	2	4579	0.7	46.5	9.2	10.2	2.5	21.3	3.1	5.4	1.1	47.2	9.2	43.6	0.058	0.511	30.585681	-111.430436
El Ocuca	31.55	3	1	4074	0.5	52.1	6.8	7.3	2.8	19.4	4.6	4.9	1.6	52.6	6.8	40.6	0.059	0.518	30.585763	-111.438265
El Ocuca	31.55	3	2	4414	0.9	50.5	8.4	9.3	2.6	19.4	3.0	4.7	1.2	51.4	8.4	40.2	0.058	0.520	30.585764	-111.438266
Altar	72.80	1	0	10074	1.1	63.6	4.7	10.6	1.4	12.2	2.3	2.9	1.2	64.7	4.7	30.6	0.083	0.514	30.710565	-111.830388
Altar	72.80	3	1	3125	0.9	66.1	0.0	5.1	4.6	14.2	2.4	3.9	2.8	67.0	0.0	33.0	0.063	0.515	30.713204	-111.854902
Altar	72.80	3	2	3311	0.1	74.3	0.0	5.4	3.6	7.8	1.7	3.9	3.2	74.4	0.0	25.6	0.063	0.515	30.713204	-111.854903
T. Izq. Estación Pitiquito	94.28	1	0	7687	0.5	56.9	6.4	12.2	2.0	15.6	2.2	3.4	0.8	57.4	6.4	36.2	0.055	0.510	30.688489	-112.032288

SONORA

14 CARR: Santa Ana - Sonoita

CLAVE: 26080

RUTA: MEX-002D-MEX

AÑO: 2014

LUGAR	ESTACION				CLASIFICACION VEHICULAR EN PORCIENTO													COORDENADAS		
	KM	TE	SC	TDPA	M	A	B	C2	C3	T3S2	T3S3	T3S2R4	OTROS	A	B	C	K'	D	LATITUD	LONGITUD
Caborca	103.83	1	0	10521	1.1	69.7	3.6	9.7	1.1	10.5	1.3	2.0	1.0	70.8	3.6	25.6	0.057	0.507	30.709960	-112.126935
Cozón	180.30	1	0	2939	0.3	46.4	10.6	1.4	1.2	27.6	3.7	7.4	1.4	46.7	10.6	42.7	0.060	0.526	31.290269	-112.543850
Sonoita	253.70	1	0	3194	0.5	49.6	9.6	1.5	1.5	26.3	3.2	6.6	1.2	50.1	9.6	40.3	0.055	0.532	31.846816	-112.858972

15 CARR: Altar - Sáric

CLAVE: 26233

RUTA: SON-064

AÑO: 2014

LUGAR	ESTACION				CLASIFICACION VEHICULAR EN PORCIENTO													COORDENADAS		
	KM	TE	SC	TDPA	M	A	B	C2	C3	T3S2	T3S3	T3S2R4	OTROS	A	B	C	K'	D	LATITUD	LONGITUD
T. C. Santa Ana - Sonoita	0.00	3	0	1261	0.5	94.0	0.0	0.8	0.9	2.5	0.5	0.2	0.6	94.5	0.0	5.5	0.067	0.500	30.722277	-111.831211
Sáric	68.00	1	0	270	2.3	84.3	5.3	7.6	0.0	0.5	0.0	0.0	0.0	86.6	5.3	8.1	0.136	0.507	31.099971	-111.389150

16 CARR: Caborca - El Desemboque

CLAVE: 26225

RUTA: SON-037

AÑO: 2014

LUGAR	ESTACION				CLASIFICACION VEHICULAR EN PORCIENTO													COORDENADAS		
	KM	TE	SC	TDPA	M	A	B	C2	C3	T3S2	T3S3	T3S2R4	OTROS	A	B	C	K'	D	LATITUD	LONGITUD
Caborca	0.00	3	0	7853	0.6	78.7	1.2	9.7	1.2	4.6	1.7	0.4	1.9	79.3	1.2	19.5	0.067	0.503	30.707885	-112.185748
T. Der. Productora Nal. de Semillas	4.20	3	0	5572	3.4	85.2	0.0	2.0	2.4	3.7	0.8	0.5	2.0	88.6	0.0	11.4	0.067	0.502	30.703974	-112.206507
T. Izq. Ramal El Deseo	6.90	3	0	4408	0.3	73.0	4.2	15.0	1.6	4.2	0.7	0.7	0.3	73.3	4.2	22.5	0.071	0.531	30.700246	-112.226379
T. Der. El Sahuaro	61.20	3	0	1257	1.6	77.9	4.1	13.6	0.4	1.0	0.1	0.2	1.1	79.5	4.1	16.4	0.111	0.504	30.801502	-112.719464
El Desemboque	102.30																			

17 CARR: Calle 36 Norte - Puerto de La Libertad

CLAVE: 26117

RUTA: SON-029

AÑO: 2014

LUGAR	ESTACION				CLASIFICACION VEHICULAR EN PORCIENTO													COORDENADAS		
	KM	TE	SC	TDPA	M	A	B	C2	C3	T3S2	T3S3	T3S2R4	OTROS	A	B	C	K'	D	LATITUD	LONGITUD
T. C. Hermosillo - Bahía Kino	0.00	3	0	444	0.1	74.1	1.4	11.1	2.2	7.6	0.6	2.0	0.9	74.2	1.4	24.4	0.106	0.505	28.832223	-111.714391
Casas Grandes	45.00	3	0	407	2.1	69.9	2.0	11.8	4.2	5.2	1.2	3.0	0.6	72.0	2.0	26.0	0.091	0.504	29.188503	-111.724339
Puerto de La Libertad	156.00																			

18 CARR: Esperanza - Presa Álvaro Obregón

CLAVE: 26242

RUTA: SON-117

AÑO: 2014

LUGAR	ESTACION				CLASIFICACION VEHICULAR EN PORCIENTO													COORDENADAS		
	KM	TE	SC	TDPA	M	A	B	C2	C3	T3S2	T3S3	T3S2R4	OTROS	A	B	C	K'	D	LATITUD	LONGITUD
Esperanza	0.00	3	0	5172	1.2	78.5	2.6	5.1	1.6	4.3	5.3	0.1	1.3	79.7	2.6	17.7	0.109	0.504	27.585301	-109.917005
T. Der. Los Hornos	17.00	3	0	1036	3.8	85.3	4.6	5.2	0.9	0.2	0.0	0.0	0.0	89.1	4.6	6.3	0.449	0.509	27.720710	-109.897558

SONORA

18 CARR: Esperanza - Presa Álvaro Obregón

CLAVE: 26242

RUTA: SON-117

AÑO: 2014

LUGAR	ESTACION				CLASIFICACION VEHICULAR EN PORCIENTO														COORDENADAS		
	KM	TE	SC	TDPA	M	A	B	C2	C3	T3S2	T3S3	T3S2R4	OTROS	A	B	C	K'	D	LATITUD	LONGITUD	
Presa Álvaro Obregón	32.00																				

19 CARR: Hermosillo - Bahía Kino

CLAVE: 26109

RUTA: SON-100

AÑO: 2014

LUGAR	ESTACION				CLASIFICACION VEHICULAR EN PORCIENTO														COORDENADAS	
	KM	TE	SC	TDPA	M	A	B	C2	C3	T3S2	T3S3	T3S2R4	OTROS	A	B	C	K'	D	LATITUD	LONGITUD
Hermosillo	0.00	3	1	13339	1.4	85.8	2.9	5.2	1.7	0.7	0.9	0.6	0.8	87.2	2.9	9.9	0.106	0.504	29.094663	-111.013619
Hermosillo	0.00	3	2	13559	1.7	84.1	3.4	5.9	2.0	0.7	0.9	0.6	0.7	85.8	3.4	10.8	0.091	0.504	29.094664	-111.013618
T. Der. Aeropuerto	11.00	1	1	11103	2.0	85.6	2.4	7.1	0.8	0.8	0.5	0.3	0.5	87.6	2.4	10.0	0.096	0.505	29.090299	-111.045944
T. Der. Aeropuerto	11.00	1	2	10864	1.2	86.6	2.4	7.1	0.7	0.8	0.6	0.3	0.3	87.8	2.4	9.8	0.084	0.505	29.090292	-111.045941
T. Der. Aeropuerto	11.00	3	1	7611	1.4	84.1	0.0	1.5	3.8	2.2	1.4	1.0	4.6	85.5	0.0	14.5	0.103	0.504	29.088106	-111.053470
T. Der. Aeropuerto	11.00	3	2	7722	1.3	84.0	0.0	1.2	3.9	1.4	1.6	1.1	5.5	85.3	0.0	14.7	0.081	0.504	29.088110	-111.053478
T. Izq. Calle 4 Sur	53.00	3	0	7098	0.8	72.6	3.4	12.5	2.5	5.1	1.4	1.0	0.7	73.4	3.4	23.2	0.101	0.501	28.839541	-111.396690
El Triunfo	55.50	1	0	6684	1.4	86.6	0.0	2.3	2.3	2.6	1.0	1.3	2.5	88.0	0.0	12.0	0.069	0.521	28.839483	-111.426819
T. Der. Calle 36	84.40	1	0	2302	0.5	73.5	5.1	11.9	2.6	3.9	1.3	0.1	1.1	74.0	5.1	20.9	0.122	0.512	28.831371	-111.711522
T. Der. Calle 36	84.40	3	0	1974	0.5	81.7	3.7	10.7	1.2	1.6	0.5	0.0	0.1	82.2	3.7	14.1	0.108	0.514	28.831279	-111.718061
Bahía Kino	106.50	1	0	2499	0.3	87.0	0.3	9.7	0.5	1.3	0.3	0.0	0.6	87.3	0.3	12.4	0.204	0.507	28.828447	-111.930294

20 CARR: Hermosillo - Sahuaripa

CLAVE: 26230

RUTA: SON-020

AÑO: 2014

LUGAR	ESTACION				CLASIFICACION VEHICULAR EN PORCIENTO														COORDENADAS		
	KM	TE	SC	TDPA	M	A	B	C2	C3	T3S2	T3S3	T3S2R4	OTROS	A	B	C	K'	D	LATITUD	LONGITUD	
T. C. Libramiento de Hermosillo	0.00	3	1	5261	1.2	84.7	1.7	1.7	3.4	2.7	0.9	1.4	2.3	85.9	1.7	12.4	0.216	0.509	29.030417	-110.901223	
T. C. Libramiento de Hermosillo	0.00	3	2	5078	1.3	85.1	1.4	2.0	3.9	2.6	0.7	1.3	1.7	86.4	1.4	12.2	0.202	0.509	29.030417	-110.901223	
Mazatán	88.00	1	0	1058	0.2	81.4	4.3	9.3	4.3	0.3	0.1	0.0	0.1	81.6	4.3	14.1	0.112	0.501	29.005209	-110.148345	
Mazatán	88.00	3	0	711	0.3	79.2	0.9	15.1	1.5	2.0	0.1	0.0	0.9	79.5	0.9	19.6	0.108	0.504	28.997005	-110.135902	
Sahuaripa	199.00																				

21 CARR: Hornos - San Nicolás

CLAVE: 26243

RUTA: SON-012

AÑO: 2014

LUGAR	ESTACION				CLASIFICACION VEHICULAR EN PORCIENTO														COORDENADAS		
	KM	TE	SC	TDPA	M	A	B	C2	C3	T3S2	T3S3	T3S2R4	OTROS	A	B	C	K'	D	LATITUD	LONGITUD	
Hornos	0.00	3	0	1382	1.7	68.1	6.4	7.4	2.9	4.7	7.6	0.5	0.7	69.8	6.4	23.8	0.115	0.537	27.719275	-109.895001	
Rosario	58.00	1	0	1186	2.1	63.6	6.9	8.5	2.9	5.0	8.8	1.1	1.1	65.7	6.9	27.4	0.110	0.503	27.842223	-109.383575	
San Nicolás	137.20																				

SONORA

22 CARR: Huatabampo - Bacabachi

CLAVE: 26237

RUTA: SON-176

AÑO: 2014

LUGAR	ESTACION				CLASIFICACION VEHICULAR EN PORCIENTO													COORDENADAS		
	KM	TE	SC	TDPA	M	A	B	C2	C3	T3S2	T3S3	T3S2R4	OTROS	A	B	C	K'	D	LATITUD	LONGITUD
Huatabampo	0.00	3	0	1408	14.1	68.5	1.6	2.5	4.1	5.1	0.9	0.7	2.5	82.6	1.6	15.8	0.096	0.514	26.825257	-109.600622
T. C. Los Mochis - Cd. Obregón (Cuota)	29.00	1	0	932	3.6	71.0	5.9	1.4	4.8	9.4	1.5	1.3	1.1	74.6	5.9	19.5	0.097	0.517	26.838645	-109.369831

23 CARR: La Alameda - El Sahuaro

CLAVE: 26234

RUTA: SON-037

AÑO: 2014

LUGAR	ESTACION				CLASIFICACION VEHICULAR EN PORCIENTO													COORDENADAS		
	KM	TE	SC	TDPA	M	A	B	C2	C3	T3S2	T3S3	T3S2R4	OTROS	A	B	C	K'	D	LATITUD	LONGITUD
T. C. Caborca - El Desemboque	0.00	3	0	3540	1.8	73.2	5.8	13.4	1.4	0.7	0.2	0.1	3.4	75.0	5.8	19.2	0.105	0.511	30.807697	-112.720617
Estación El Sahuaro	47.00	1	0	1153	0.2	49.7	18.2	24.9	0.7	3.0	0.6	0.9	1.8	49.9	18.2	31.9	0.095	0.519	31.041917	-112.943422

24 CARR: Mazocahui - Cananea

CLAVE: 26118

RUTA: SON-118

AÑO: 2014

LUGAR	ESTACION				CLASIFICACION VEHICULAR EN PORCIENTO													COORDENADAS		
	KM	TE	SC	TDPA	M	A	B	C2	C3	T3S2	T3S3	T3S2R4	OTROS	A	B	C	K'	D	LATITUD	LONGITUD
T. C. Hermosillo - Moctezuma	0.00	3	0	975	0.5	92.6	0.0	1.7	2.3	1.1	1.2	0.2	0.4	93.1	0.0	6.9	0.113	0.508	29.544828	-110.120633
Baviácora	15.20	3	0	1760	1.5	76.2	7.3	10.1	1.6	1.9	1.3	0.0	0.1	77.7	7.3	15.0	0.066	0.522	29.727885	-110.166839
Arizpe	98.00	1	0	352	1.8	75.7	6.5	12.3	0.9	1.5	1.0	0.1	0.2	77.5	6.5	16.0	0.092	0.535	30.331129	-110.177349
T. C. Imuris - Agua Prieta	204.00	1	0	1589	14.0	54.7	3.6	6.5	10.5	4.6	2.9	1.1	2.1	68.7	3.6	27.7	0.111	0.502	30.987996	-110.260798

25 CARR: Navojoa - Álamos

CLAVE: 26240

RUTA: SON-013

AÑO: 2014

LUGAR	ESTACION				CLASIFICACION VEHICULAR EN PORCIENTO													COORDENADAS		
	KM	TE	SC	TDPA	M	A	B	C2	C3	T3S2	T3S3	T3S2R4	OTROS	A	B	C	K'	D	LATITUD	LONGITUD
Navojoa	0.00	3	0	3441	6.2	75.6	2.1	9.4	2.7	1.2	0.5	0.7	1.6	81.8	2.1	16.1	0.113	0.501	27.074358	-109.402472
Álamos	52.80	1	0	2943	5.1	79.3	5.9	7.7	0.8	0.1	0.1	0.0	1.0	84.4	5.9	9.7	0.111	0.501	27.032818	-108.954755

26 CARR: Navojoa - Yavaros

CLAVE: 26229

RUTA: SON-056

AÑO: 2014

LUGAR	ESTACION				CLASIFICACION VEHICULAR EN PORCIENTO													COORDENADAS		
	KM	TE	SC	TDPA	M	A	B	C2	C3	T3S2	T3S3	T3S2R4	OTROS	A	B	C	K'	D	LATITUD	LONGITUD
Navojoa	0.00	3	1	4841	3.9	81.7	5.2	5.9	1.2	1.4	0.4	0.1	0.2	85.6	5.2	9.2	0.071	0.509	27.040312	-109.467011
Navojoa	0.00	3	2	5029	3.3	80.9	5.9	6.4	1.3	1.5	0.4	0.1	0.2	84.2	5.9	9.9	0.077	0.509	27.040312	-109.467011
Yavaros	55.00	1	0	1902	9.5	73.5	3.5	7.7	2.3	1.9	0.9	0.1	0.6	83.0	3.5	13.5	0.070	0.501	26.705467	-109.543915

SONORA

27 CARR: Nogales - San Antonio

CLAVE: 26110

RUTA: SON

AÑO: 2014

LUGAR	ESTACION				CLASIFICACION VEHICULAR EN PORCIENTO														COORDENADAS		
	KM	TE	SC	TDPA	M	A	B	C2	C3	T3S2	T3S3	T3S2R4	OTROS	A	B	C	K'	D	LATITUD	LONGITUD	
Nogales	0.00																				
San Antonio	58.00	1	0	310	0.6	87.3	1.0	10.3	0.0	0.4	0.4	0.0	0.0	87.9	1.0	11.1	0.106	0.533	30.983315	-110.584719	

28 CARR: Ramal a Aeropuerto de Guaymas

CLAVE: 26568

RUTA: SON

AÑO: 2014

LUGAR	ESTACION				CLASIFICACION VEHICULAR EN PORCIENTO														COORDENADAS	
	KM	TE	SC	TDPA	M	A	B	C2	C3	T3S2	T3S3	T3S2R4	OTROS	A	B	C	K'	D	LATITUD	LONGITUD
T. C. Cd. Obregón - Hermosillo	0.00	3	1	4413	0.5	90.4	0.7	2.6	1.4	2.1	1.0	0.8	0.5	90.9	0.7	8.4	0.092	0.528	27.952749	-110.930305
T. C. Cd. Obregón - Hermosillo	0.00	3	2	4946	0.9	90.0	0.8	2.7	1.1	2.0	1.2	0.6	0.7	90.9	0.8	8.3	0.079	0.528	27.952749	-110.930304
Aeropuerto de Guaymas	3.00	3	0	5966	2.9	85.8	1.2	1.4	2.3	3.6	0.9	1.2	0.7	88.7	1.2	10.1	0.077	0.505	27.980304	-110.913574

29 CARR: San Luis Río Colorado - Golfo de Santa Clara

CLAVE: 26226

RUTA: SON-040

AÑO: 2014

LUGAR	ESTACION				CLASIFICACION VEHICULAR EN PORCIENTO														COORDENADAS	
	KM	TE	SC	TDPA	M	A	B	C2	C3	T3S2	T3S3	T3S2R4	OTROS	A	B	C	K'	D	LATITUD	LONGITUD
San Luis Río Colorado	0.00	3	1	2351	0.6	93.4	0.7	1.3	1.6	1.2	0.4	0.2	0.6	94.0	0.7	5.3	0.080	0.521	32.446116	-114.840600
San Luis Río Colorado	0.00	3	2	2558	0.4	92.4	1.1	0.8	2.4	1.0	0.4	0.4	1.1	92.8	1.1	6.1	0.082	0.521	32.446115	-114.840601
T. Izq. Lagunitas	25.50	3	0	4649	0.6	92.2	1.0	0.9	1.3	2.1	0.6	0.5	0.8	92.8	1.0	6.2	0.076	0.503	32.316672	-114.952473
Golfo de Santa Clara	114.30	1	0	1822	0.2	79.1	2.6	10.1	2.6	3.0	1.2	1.0	0.2	79.3	2.6	18.1	0.110	0.525	31.706619	-114.523790

30 CARR: Sonoita - Pitiquito

CLAVE: 26022

RUTA: SON

AÑO: 2014

LUGAR	ESTACION				CLASIFICACION VEHICULAR EN PORCIENTO														COORDENADAS	
	KM	TE	SC	TDPA	M	A	B	C2	C3	T3S2	T3S3	T3S2R4	OTROS	A	B	C	K'	D	LATITUD	LONGITUD
Sonoita	0.00	3	0	1154	0.2	96.3	0.3	0.5	1.6	0.3	0.2	0.2	0.4	96.5	0.3	3.2	0.079	0.502	31.855030	-112.828385
Pitiquito	170.00	1	0	621	0.9	51.7	3.8	18.7	3.4	18.8	0.4	2.3	0.0	52.6	3.8	43.6	0.077	0.501	30.722660	-112.094744

31 CARR: T. C. (Hermosillo - Nogales) - Huásabas

CLAVE: 26231

RUTA: MEX-014-SON

AÑO: 2014

LUGAR	ESTACION				CLASIFICACION VEHICULAR EN PORCIENTO														COORDENADAS	
	KM	TE	SC	TDPA	M	A	B	C2	C3	T3S2	T3S3	T3S2R4	OTROS	A	B	C	K'	D	LATITUD	LONGITUD
T. C. Hermosillo - Nogales	0.00	3	1	6888	0.5	82.6	3.1	9.8	1.2	2.0	0.4	0.2	0.2	83.1	3.1	13.8	0.086	0.504	29.170000	-110.901111
T. C. Hermosillo - Nogales	0.00	3	2	6789	0.4	81.9	3.2	11.0	0.9	2.1	0.5	0.0	0.0	82.3	3.2	14.5	0.123	0.504	29.170000	-110.901111
Ures	62.00	3	0	2008	1.5	81.8	1.5	6.4	2.1	2.7	1.4	1.5	1.1	83.3	1.5	15.2	0.096	0.505	29.432222	-110.355421
Mazocahui	97.50	3	0	892	0.1	77.9	1.8	6.4	3.4	4.0	1.9	2.8	1.7	78.0	1.8	20.2	0.101	0.507	29.544156	-110.119298

SONORA

31 CARR: T.C. (Hermosillo - Nogales) - Huásabas

CLAVE: 26231

RUTA: MEX-014-SON

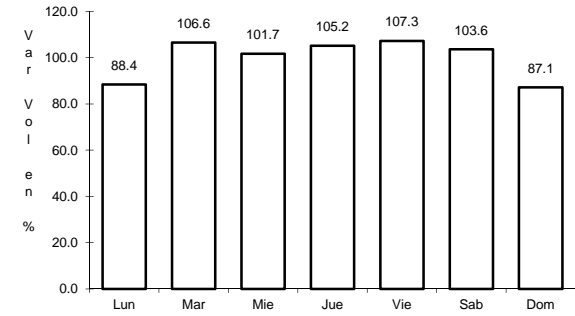
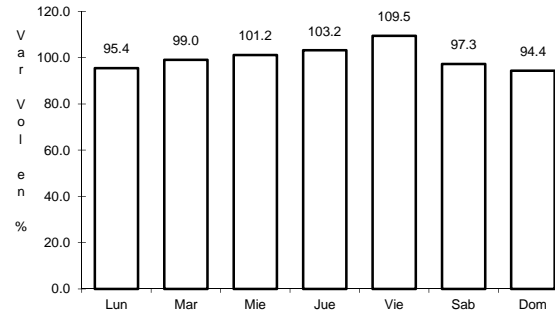
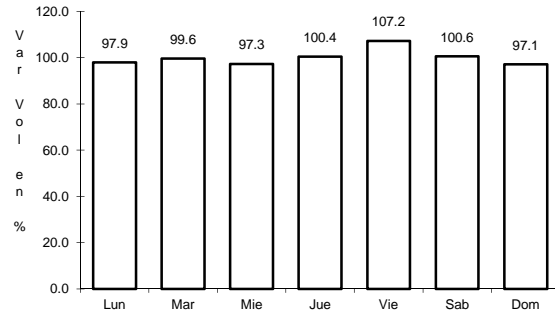
AÑO: 2014

L U G A R	E S T A C I O N				C L A S I F I C A C I O N V E H I C U L A R E N P O R C I E N T O														C O O R D E N A D A S	
	KM	TE	SC	TDPA	M	A	B	C2	C3	T3S2	T3S3	T3S2R4	OTROS	A	B	C	K'	D	LATITUD	LONGITUD
Moctezuma	165.00	1	0	1035	0.6	79.2	1.6	5.5	3.0	4.3	1.6	2.9	1.3	79.8	1.6	18.6	0.093	0.510	29.789440	-109.691943
Moctezuma	165.00	3	0	1386	1.2	94.7	0.0	1.6	0.7	0.7	0.3	0.0	0.8	95.9	0.0	4.1	0.071	0.502	29.800742	-109.666758
Huásabas	212.50	1	0	650	1.1	80.2	2.5	12.3	2.1	1.6	0.1	0.0	0.1	81.3	2.5	16.2	0.091	0.535	29.917770	-109.308550

1 CARR: Hermosillo - Yécora

CLAVE: 26251

RUTA: MEX-016



Km: 4.00 Tipo: 3 Sent: 1

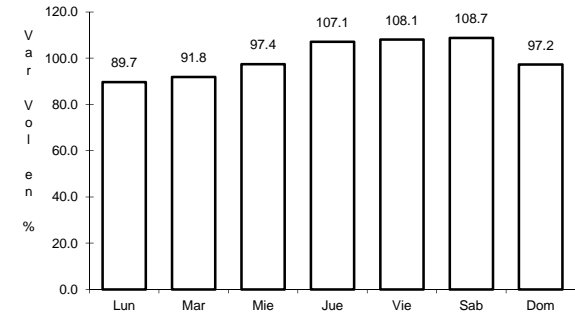
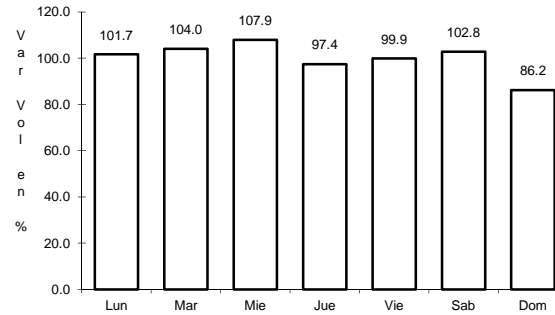
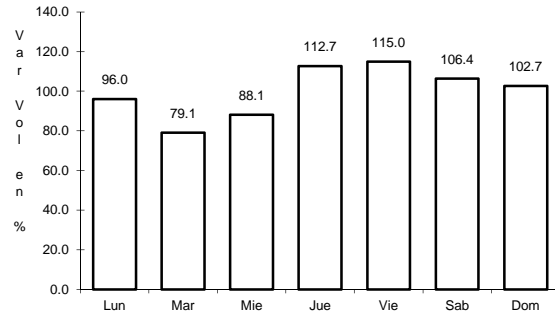
Km: 4.00 Tipo: 3 Sent: 2

Km: 138.00 Tipo: 3 Sent: 0

2 CARR: Imuris - Agua Prieta

CLAVE: 26079

RUTA: MEX-002



Km: 0.00 Tipo: 3 Sent: 0

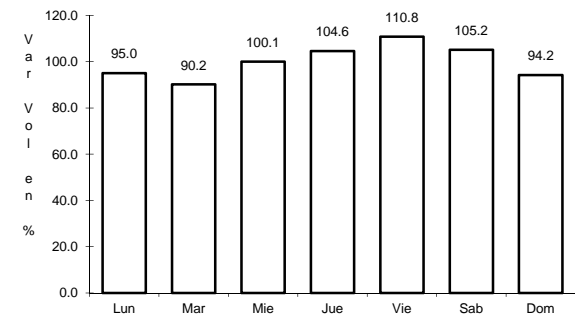
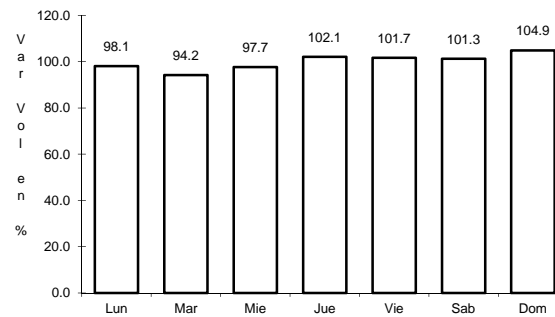
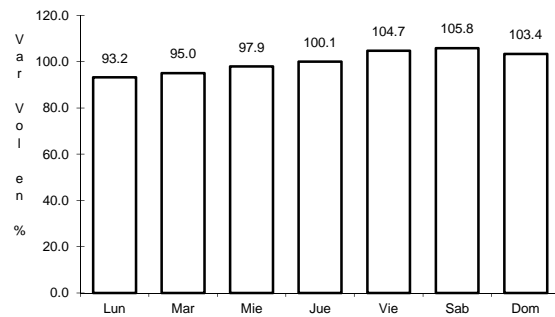
Km: 80.93 Tipo: 1 Sent: 0

Km: 164.67 Tipo: 1 Sent: 1

3 CARR: Janos - Agua Prieta

CLAVE: 00220

RUTA: MEX-002



Km: 0.00 Tipo: 3 Sent: 0

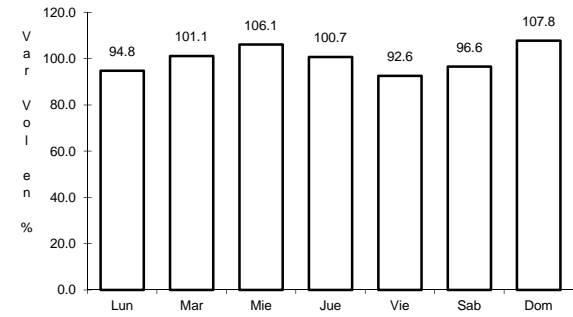
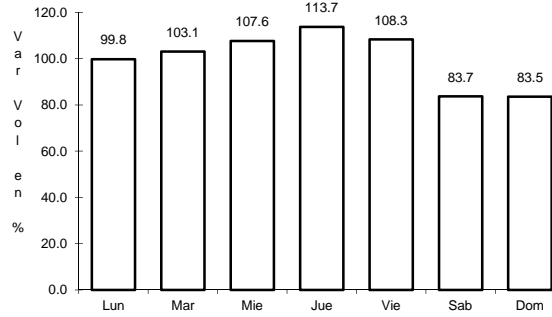
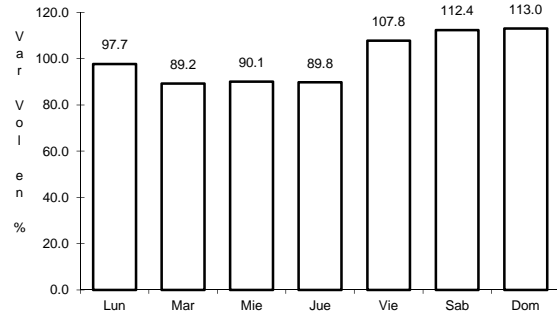
Km: 56.00 Tipo: 3 Sent: 0

Km: 160.00 Tipo: 1 Sent: 0

4 CARR: La Junta - Yécora

CLAVE: 00065

RUTA: MEX-016



Km: 0.00 Tipo: 3 Sent: 0

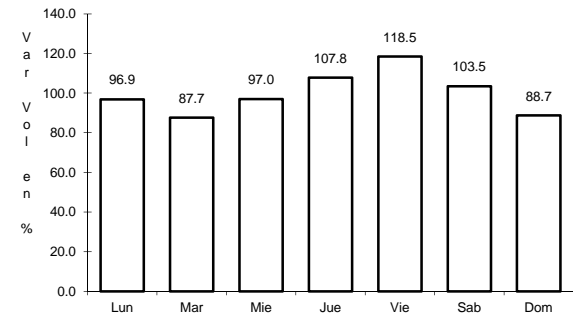
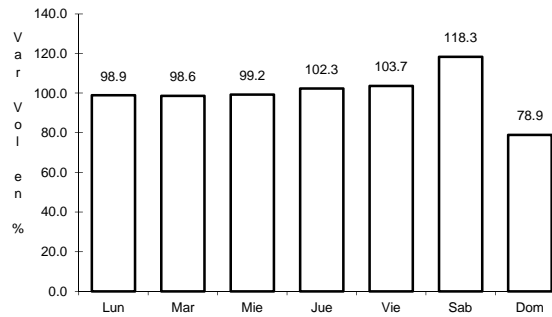
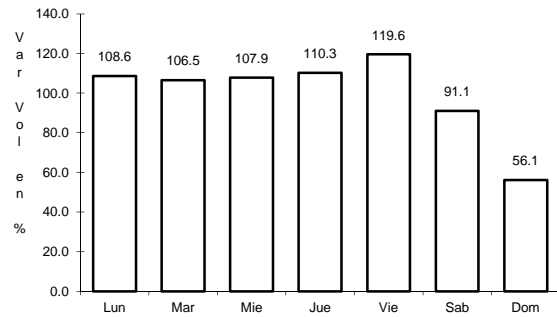
Km: 70.00 Tipo: 3 Sent: 0

Km: 253.00 Tipo: 1 Sent: 0

5 CARR: Moctezuma - Agua Prieta

CLAVE: 26027

RUTA: MEX-017



Km: 0.00 Tipo: 3 Sent: 0

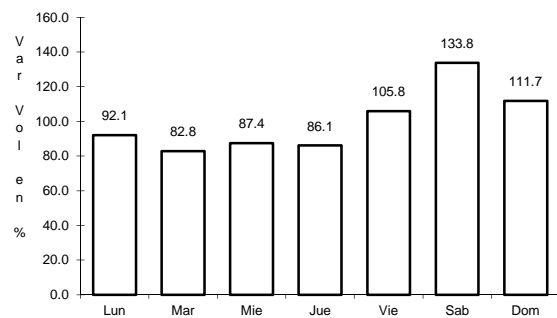
Km: 81.00 Tipo: 3 Sent: 0

Km: 197.60 Tipo: 1 Sent: 0

6 CARR: Ramal a Naco

CLAVE: 26579

RUTA: MEX-002

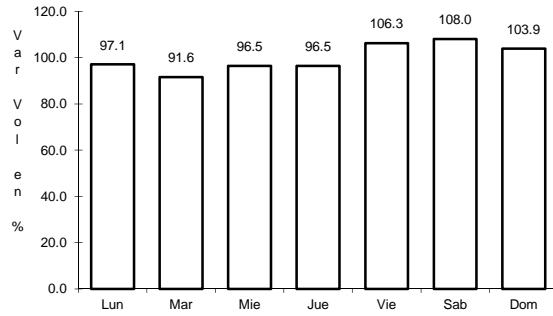


Km: 0.00 Tipo: 3 Sent: 0

7 CARR: Ramal a Puerta de México

CLAVE: 26577

RUTA: MEX-002

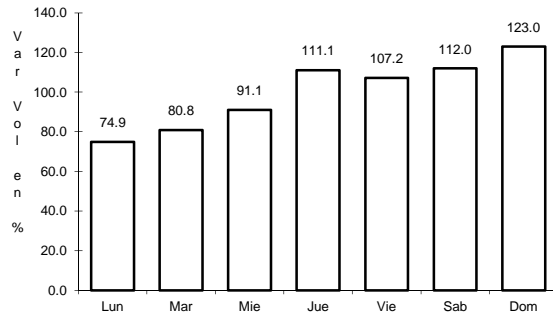


Km: 0.00 Tipo: 3 Sent: 0

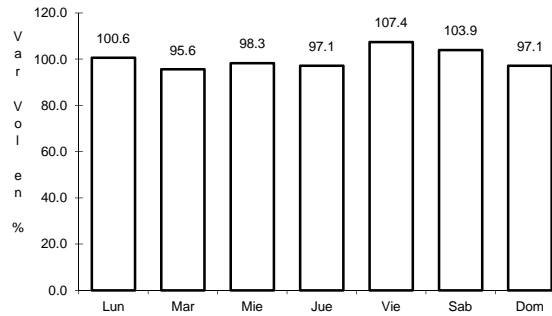
8 CARR: Sonoita - Mexicali

CLAVE: 00081

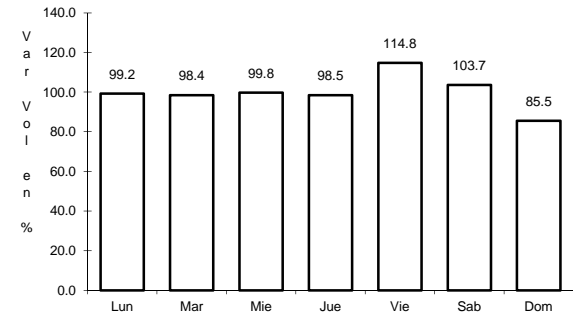
RUTA: MEX-002



Km: 0.00 Tipo: 3 Sent: 0



Km: 256.47 Tipo: 1 Sent: 1

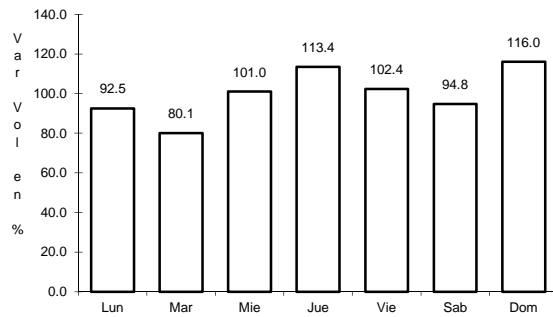


Km: 256.47 Tipo: 1 Sent: 2

9 CARR: Sonoita - Puerto Peñasco

CLAVE: 26232

RUTA: MEX-002

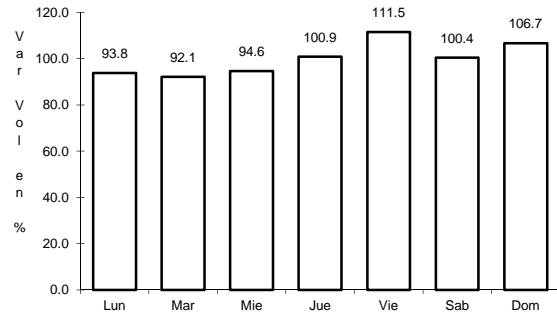


Km: 0.00 Tipo: 3 Sent: 0

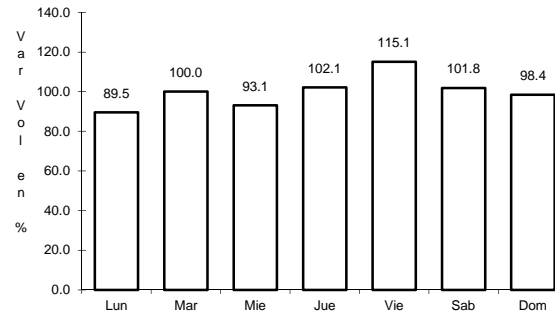
10 CARR: Libramiento de Empalme (Cuota)

CLAVE: 26256

RUTA: MEX-015D



Km: 0.00 Tipo: 3 Sent: 1

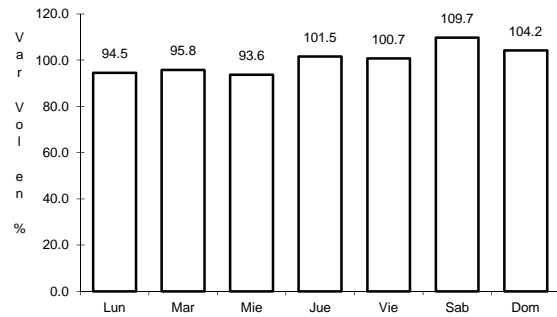


Km: 0.00 Tipo: 3 Sent: 2

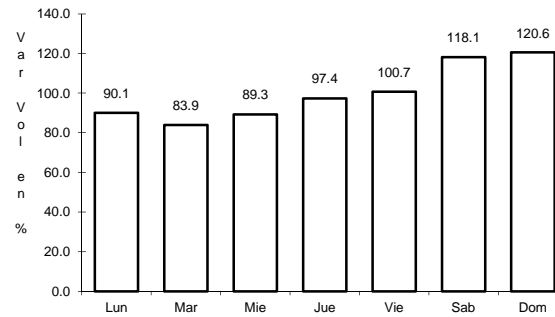
11 CARR: Libramiento de Magdalena de Kino (Cuota)

CLAVE:

RUTA: MEX-015D



Km: 183.43 Tipo: 3 Sent: 1

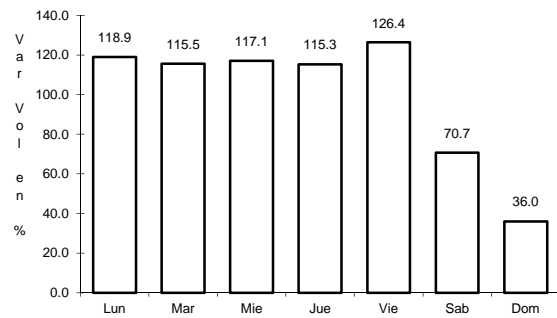


Km: 183.43 Tipo: 3 Sent: 2

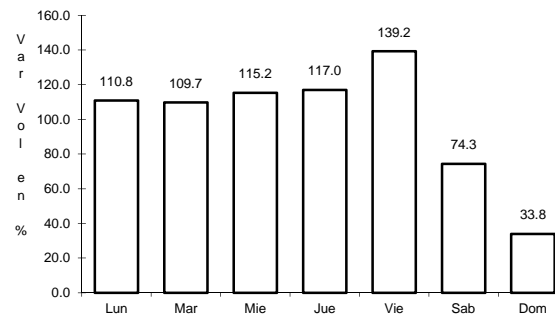
12 CARR: Libramiento de Nogales (Cuota)

CLAVE: 26100

RUTA: MEX-15D



Km: 0.00 Tipo: 3 Sent: 1

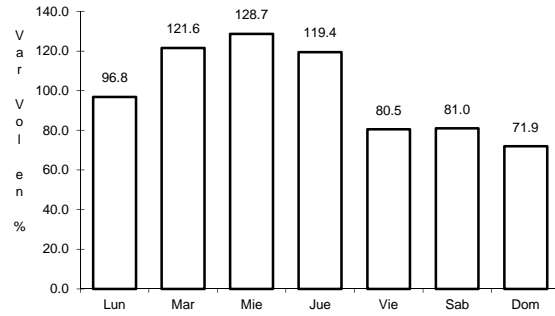


Km: 0.00 Tipo: 3 Sent: 2

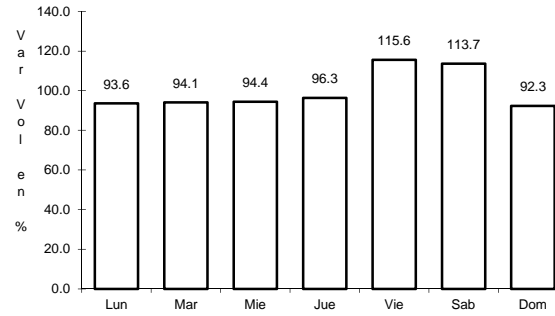
13 CARR: Est. Don - Nogales (Cuota)

CLAVE: 26444

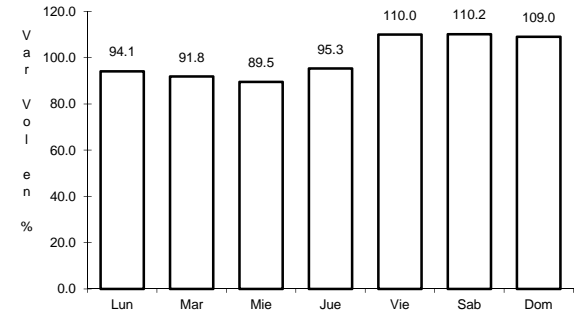
RUTA: MEX-015D-015



Km: 0.00 Tipo: 3 Sent: 1



Km: 0.00 Tipo: 3 Sent: 2

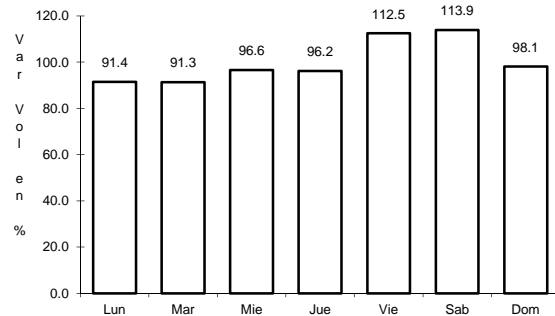


Km: 337.72 Tipo: 1 Sent: 0

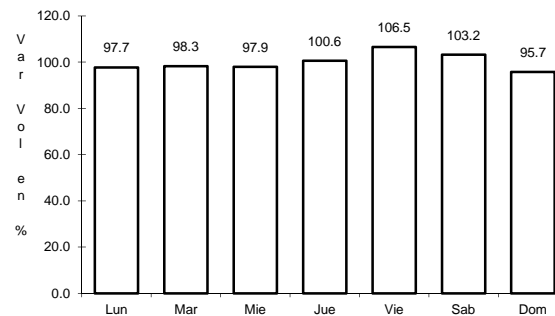
14 CARR: Santa Ana - Sonoita

CLAVE: 26080

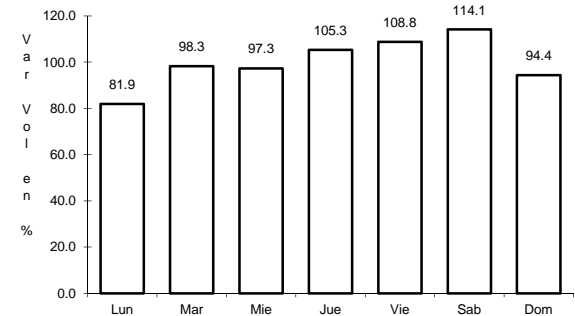
RUTA: MEX-002D-MEX



Km: 0.00 Tipo: 3 Sent: 0



Km: 103.83 Tipo: 1 Sent: 0

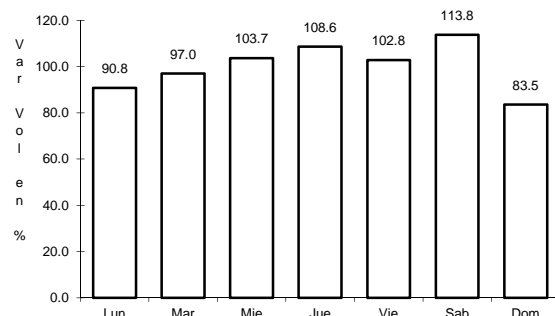


Km: 253.70 Tipo: 1 Sent: 0

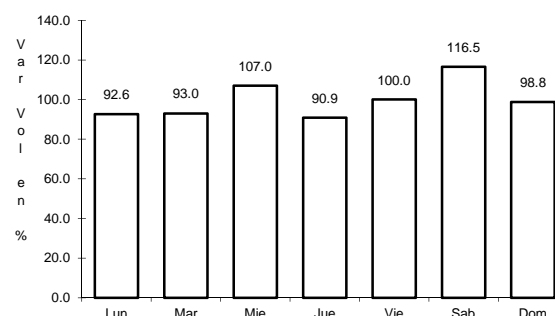
15 CARR: Altar - Sáric

CLAVE: 26233

RUTA: SON-064



Km: 0.00 Tipo: 3 Sent: 0

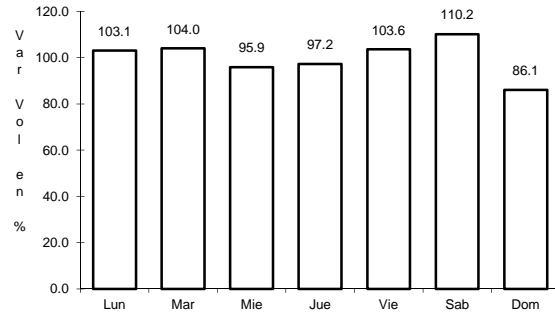


Km: 68.00 Tipo: 1 Sent: 0

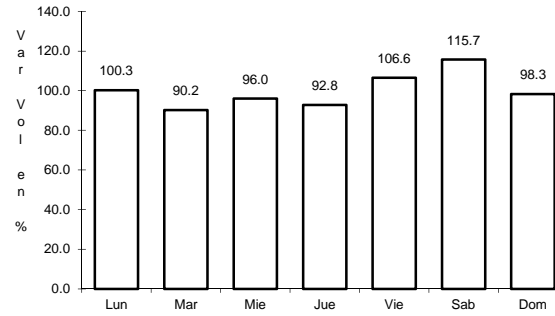
16 CARR: Caborca - El Desemboque

CLAVE: 26225

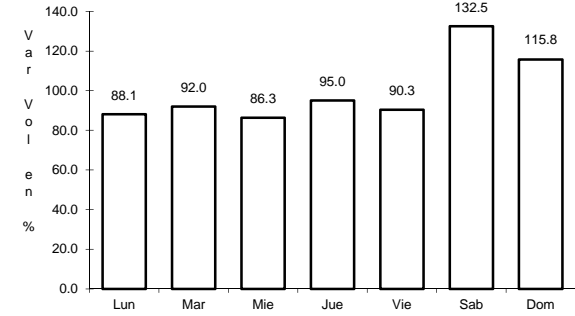
RUTA: SON-037



Km: 0.00 Tipo: 3 Sent: 0



Km: 6.90 Tipo: 3 Sent: 0

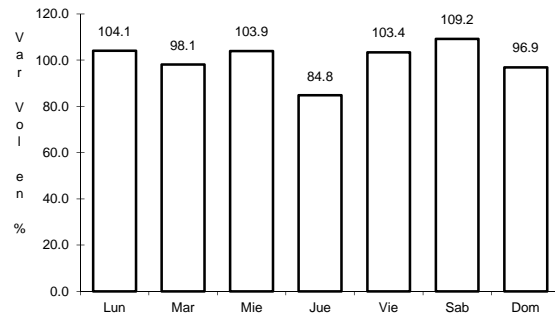


Km: 61.20 Tipo: 3 Sent: 0

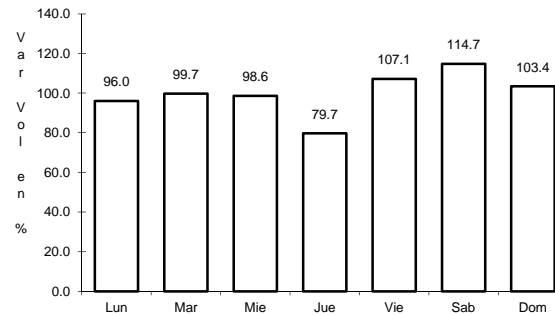
17 CARR: Calle 36 Norte - Puerto de La Libertad

CLAVE: 26117

RUTA: SON-029



Km: 0.00 Tipo: 3 Sent: 0

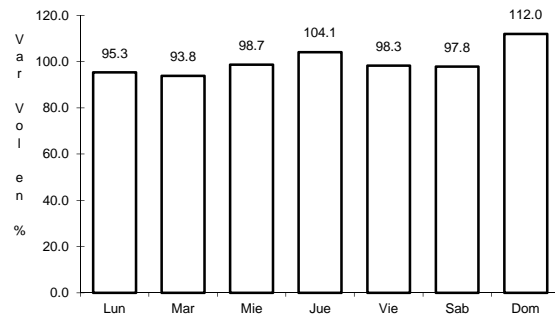


Km: 45.00 Tipo: 3 Sent: 0

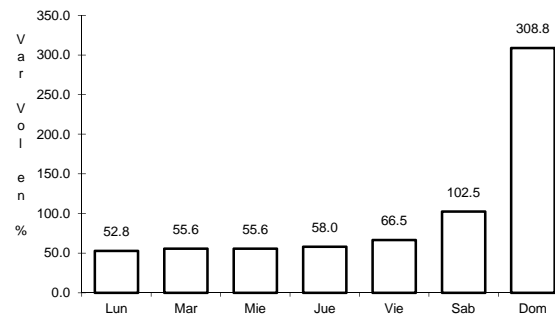
18 CARR: Esperanza - Presa Álvaro Obregón

CLAVE: 26242

RUTA: SON-117



Km: 0.00 Tipo: 3 Sent: 0

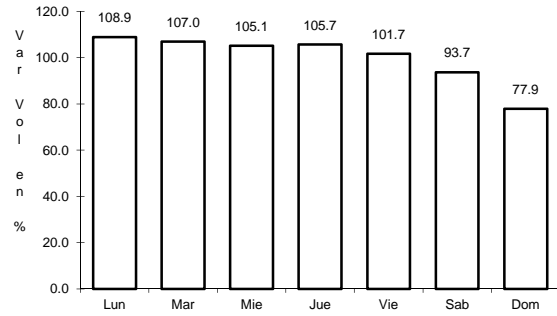


Km: 17.00 Tipo: 3 Sent: 0

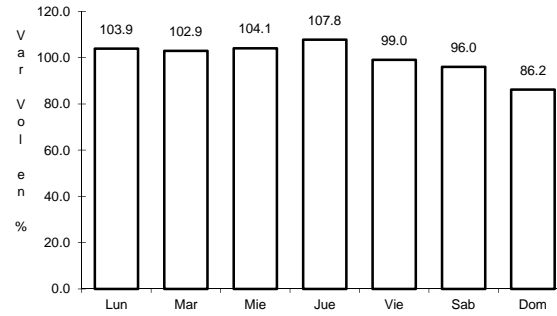
19 CARR: Hermosillo - Bahía Kino

CLAVE: 26109

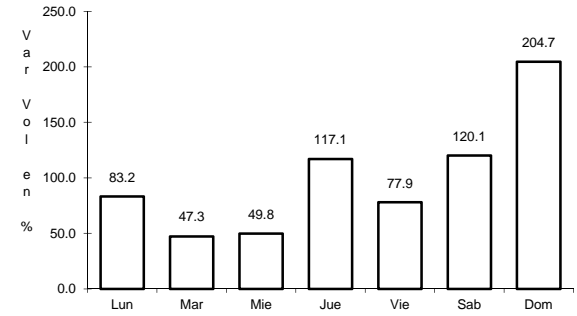
RUTA: SON-100



Km: 0.00 Tipo: 3 Sent: 1



Km: 0.00 Tipo: 3 Sent: 2

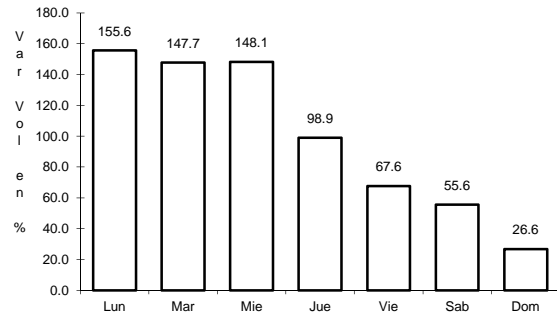


Km: 106.50 Tipo: 1 Sent: 0

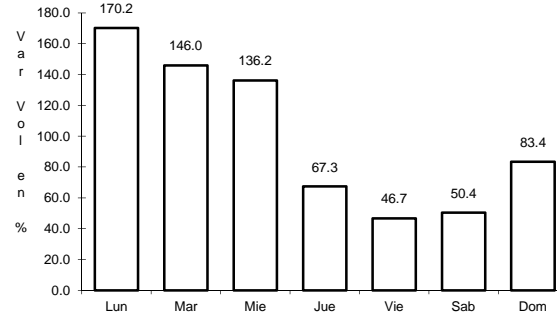
20 CARR: Hermosillo - Sahuaripa

CLAVE: 26230

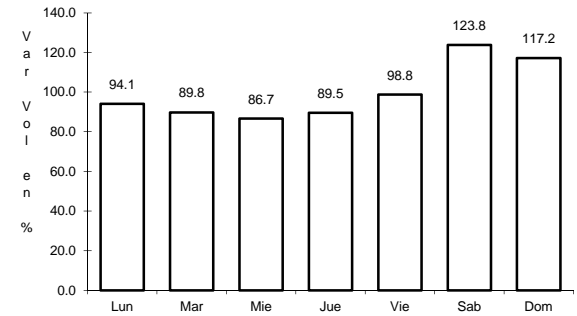
RUTA: SON-020



Km: 0.00 Tipo: 3 Sent: 1



Km: 0.00 Tipo: 3 Sent: 2

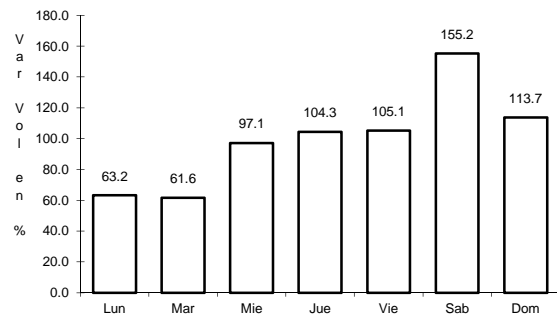


Km: 88.00 Tipo: 3 Sent: 0

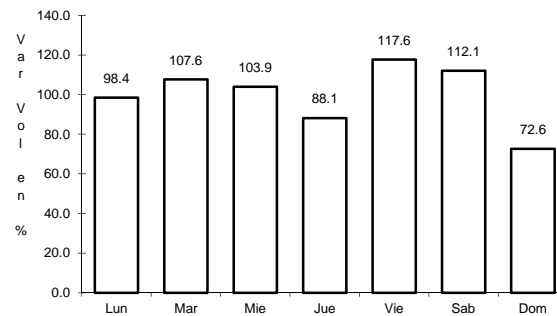
21 CARR: Hornos - San Nicolás

CLAVE: 26243

RUTA: SON-012



Km: 0.00 Tipo: 3 Sent: 0

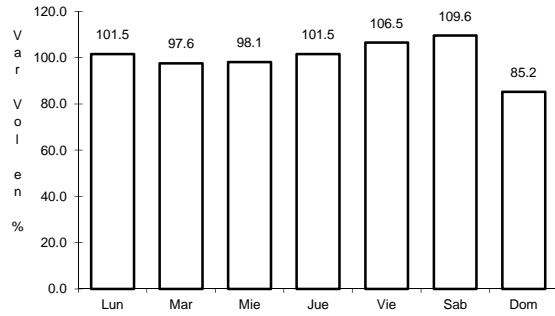


Km: 58.00 Tipo: 1 Sent: 0

22 CARR: Huatabampo - Bacabachi

CLAVE: 26237

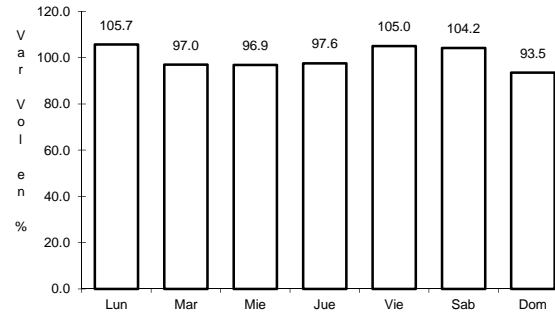
RUTA: SON-176



Km: 0.00

Tipo: 3

Sent: 0



Km: 29.00

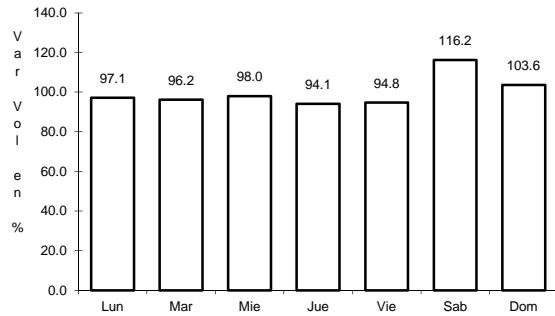
Tipo: 1

Sent: 0

23 CARR: La Alameda - El Sahuaro

CLAVE: 26234

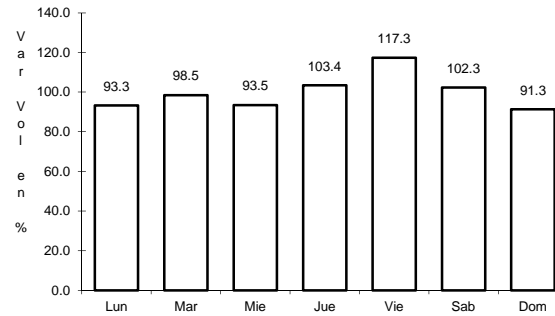
RUTA: SON-037



Km: 0.00

Tipo: 3

Sent: 0



Km: 47.00

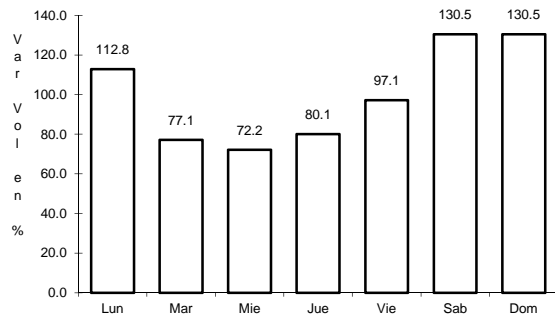
Tipo: 1

Sent: 0

24 CARR: Mazocahui - Cananea

CLAVE: 26118

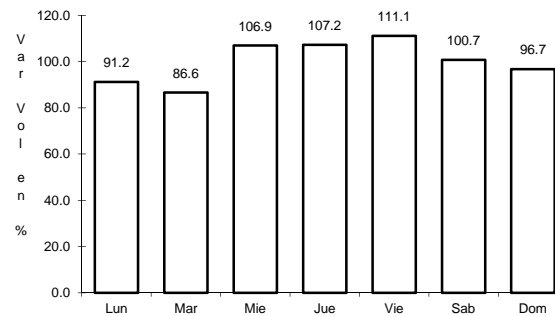
RUTA: SON-118



Km: 0.00

Tipo: 3

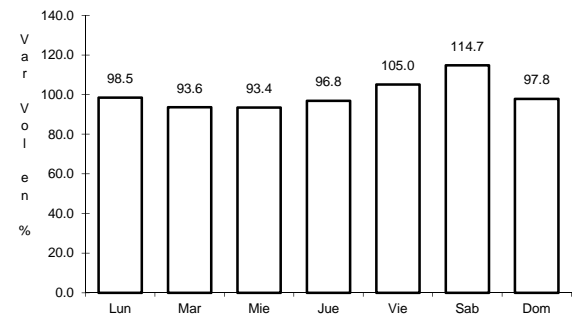
Sent: 0



Km: 98.00

Tipo: 1

Sent: 0



Km: 204.00

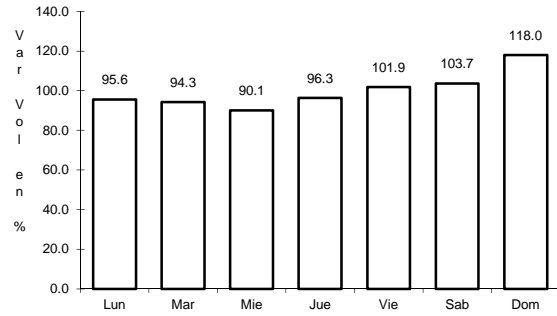
Tipo: 1

Sent: 0

25 CARR: Navojoa - Álamos

CLAVE: 26240

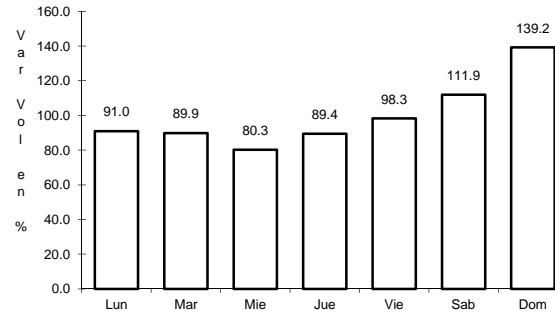
ruta: SON-013



Km: 0.00

Tipo: 3

Sent: 0



Km: 52.80

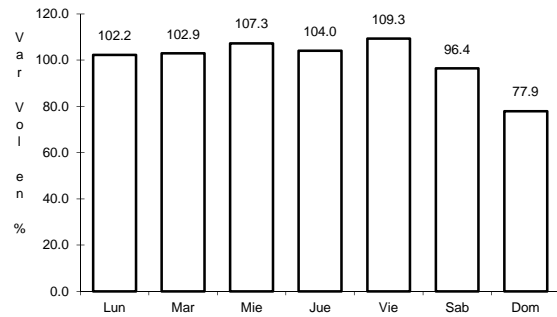
Tipo: 1

Sent: 0

26 CARR: Navojoa - Yavaros

CLAVE: 26229

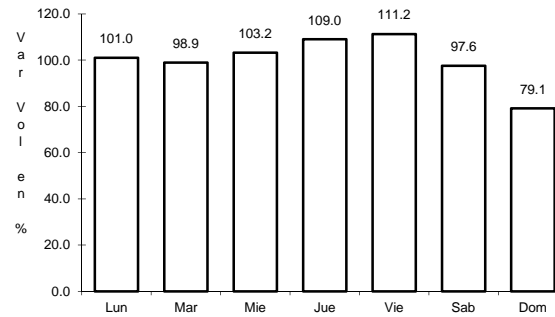
ruta: SON-056



Km: 0.00

Tipo: 3

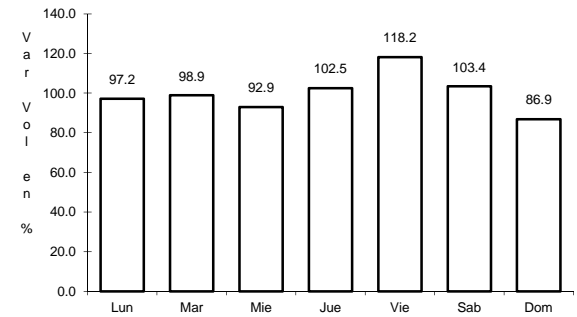
Sent: 1



Km: 0.00

Tipo: 3

Sent: 2



Km: 55.00

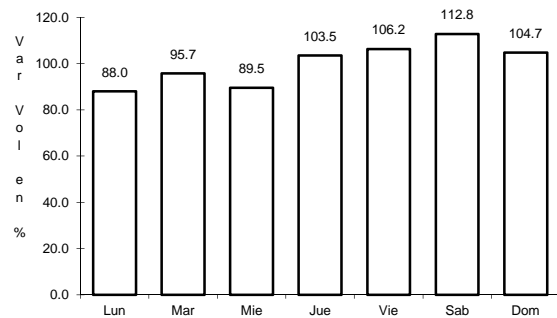
Tipo: 1

Sent: 0

27 CARR: Nogales - San Antonio

CLAVE: 26110

ruta: SON



Km: 58.00

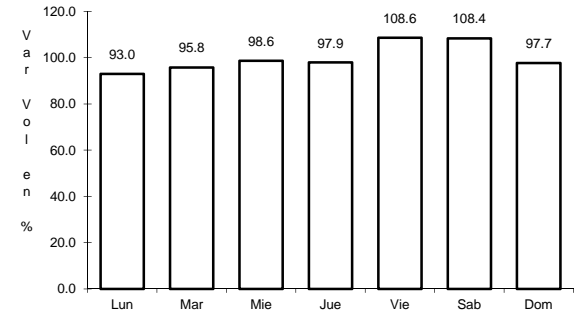
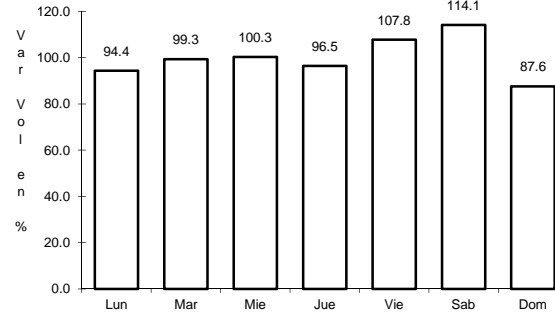
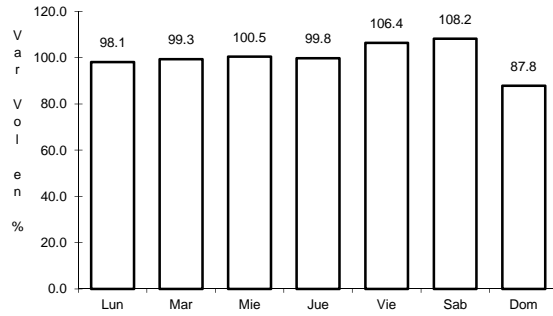
Tipo: 1

Sent: 0

28 CARR: Ramal a Aeropuerto de Guaymas

CLAVE: 26568

RUTA: SON



Km: 0.00 Tipo: 3 Sent: 1

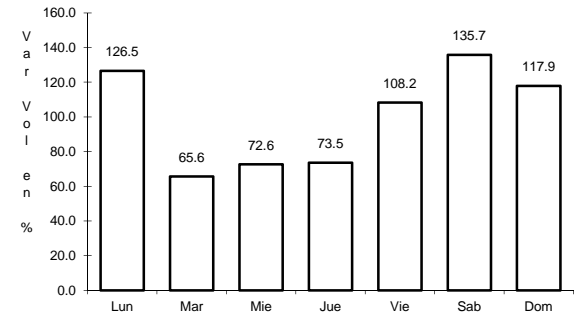
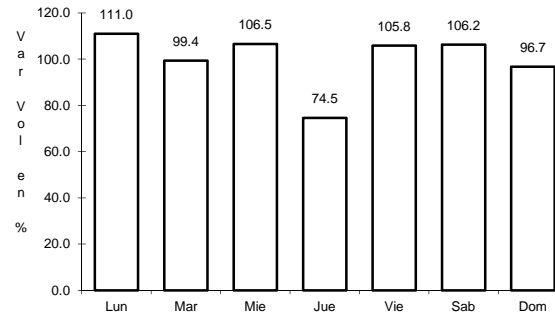
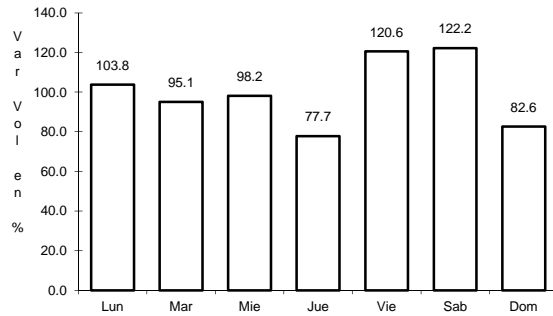
Km: 0.00 Tipo: 3 Sent: 2

Km: 3.00 Tipo: 3 Sent: 0

29 CARR: San Luis Río Colorado - Golfo de Santa Clara

CLAVE: 26226

RUTA: SON-040



Km: 0.00 Tipo: 3 Sent: 1

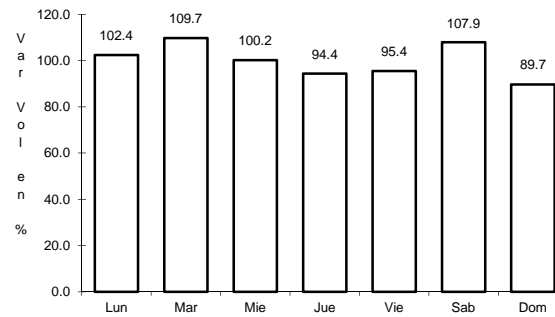
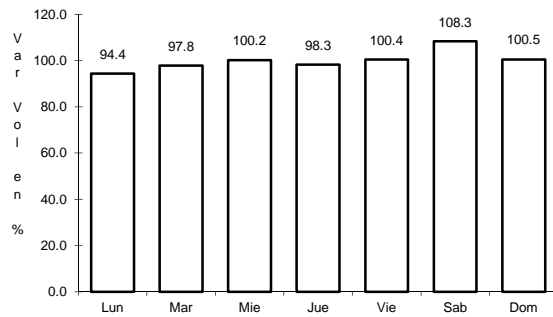
Km: 0.00 Tipo: 3 Sent: 2

Km: 114.30 Tipo: 1 Sent: 0

30 CARR: Sonoita - Pitiquito

CLAVE: 26022

RUTA: SON



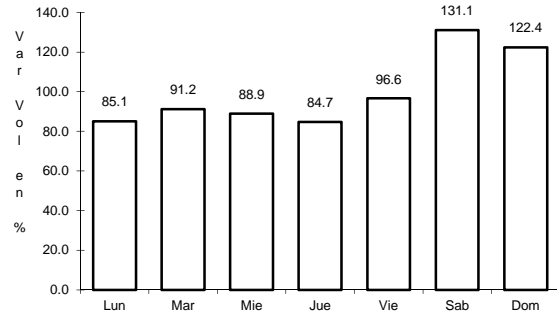
Km: 0.00 Tipo: 3 Sent: 0

Km: 170.00 Tipo: 1 Sent: 0

31 CARR: T. C. (Hermosillo - Nogales) - Huásabas

CLAVE: 26231

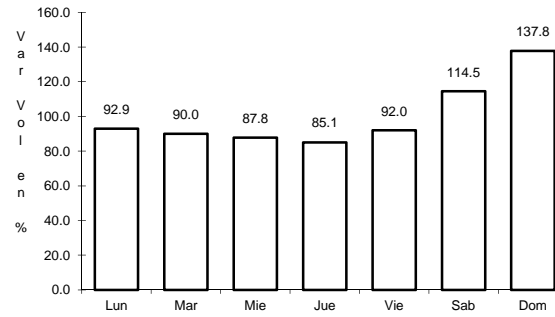
RUTA: MEX-014-SON



Km: 0.00

Tipo: 3

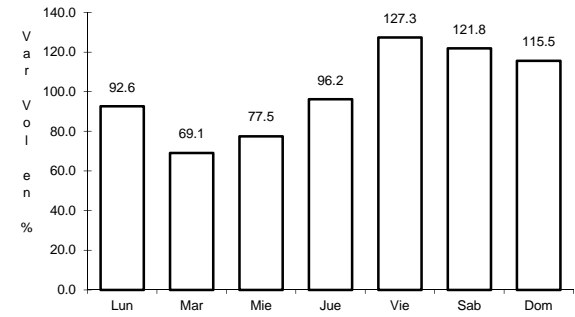
Sent: 1



Km: 0.00

Tipo: 3

Sent: 2



Km: 212.50

Tipo: 1

Sent: 0