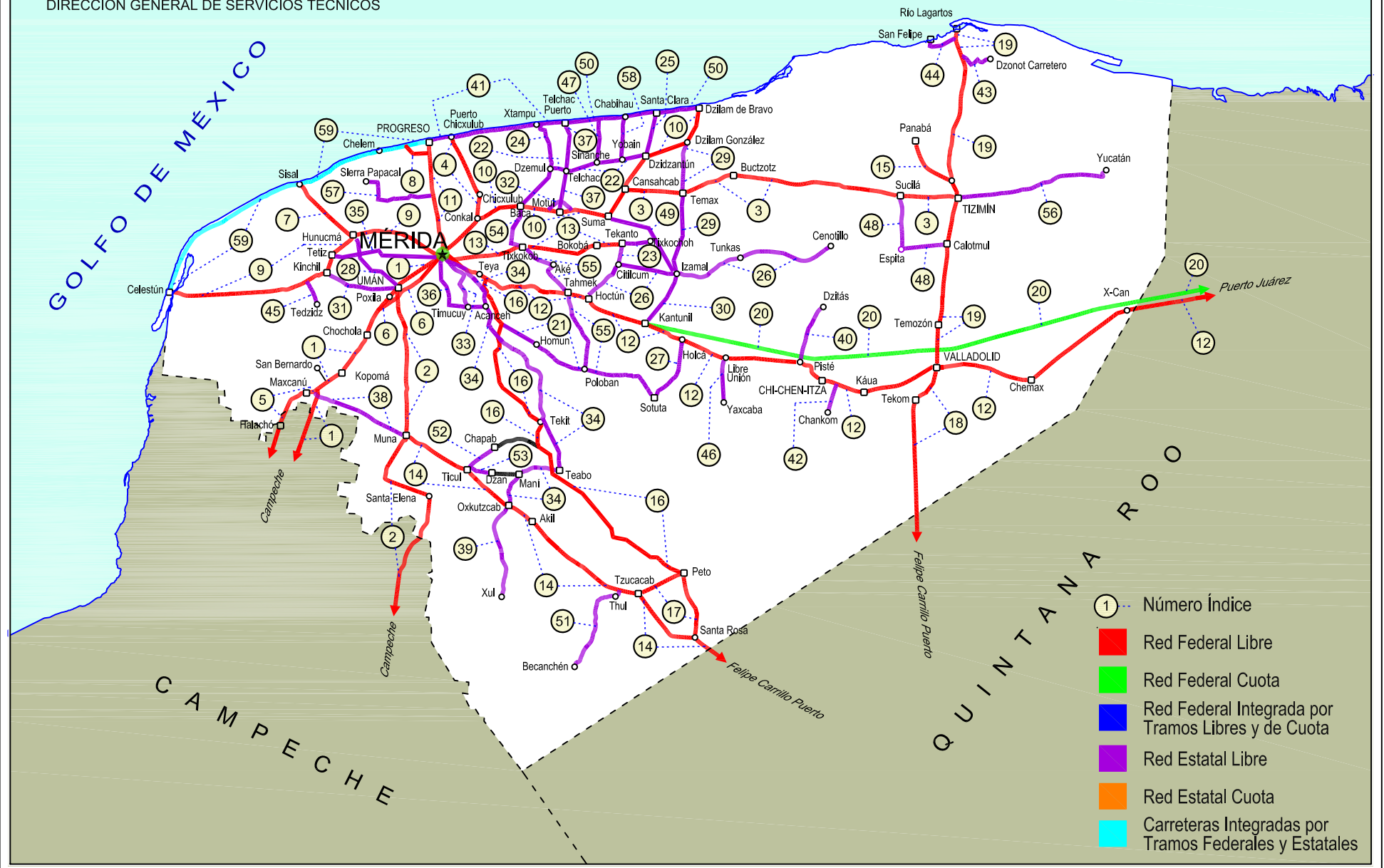


YUCATAN

NO. INDICE	CARRETERA	RUOTA
---RED FEDERAL LIBRE---		
1	Campeche - Mérida	MEX-180
2	Campeche - Umán	MEX-261
3	Cansahcab - Tizimín	MEX-176
4	Conkal - Puerto Chicxulub	MEX-176
5	Dzitolbalché - Ent. San Bernardo	MEX-180
6	Ent. Poxilá - Mérida	MEX-180
7	Hunucmá - Sisal	MEX-281
8	Libramiento de Progreso	MEX-261
9	Mérida - Celestún	MEX-281
10	Mérida - Dzilam de Bravo	MEX-176
11	Mérida - Progreso	MEX-261
12	Mérida - Puerto Juárez	MEX-180
13	Mérida - Tekanto	MEX-180
14	Muna - Felipe Carrillo Puerto	MEX-184
15	Ramal a Panabá	MEX-295
16	Teya -Peto	MEX-184
17	Tzucacab - Santa Rosa	MEX
18	Valladolid - Felipe Carrillo Puerto	MEX-295
19	Valladolid - Río Lagartos	MEX-295
---RED FEDERAL DE CUOTA---		
20	Mérida - Cancún (Cuota)	MEX-180D
---RED ESTATAL LIBRE---		
21	Acanceh - Estación Polabán	YUC
22	Baca - Dzidzantún	YUC
23	Citilcum - Tixkochoh	YUC
24	Dzemul - Xtampú	YUC
25	Dzidzantún - Santa Clara	YUC
26	Hoctún - Cenotillo	YUC-011
27	Holcá - Sotuta	YUC
28	Hunucmá - Umán	YUC
29	Izamal - Dzilam González	YUC
30	Kantunil - Izamal	YUC
31	Kinchil - Umán	YUC
32	Libramiento Norte de Motul	YUC
33	Mérida - Acanceh	YUC
34	Mérida - Oxkutzcab	YUC-018
35	Mérida - Tetiz	YUC
36	Mérida - Timucuy	YUC
37	Motul - Puerto Telchac	YUC-172
38	Muna - Maxcanú	YUC
39	Oxkutzcab - Xul	YUC-031
40	Piste - Dzitás	YUC-013
41	Progreso - Telchac Puerto	YUC-027
42	Ramal a Chankom	YUC
43	Ramal a Dzonot Carretero	YUC
44	Ramal a San Felipe	YUC
45	Ramal a Tedzidz	YUC
46	Ramal a Yaxcabá	YUC-289
47	Sinanché - Xitibcanul	YUC
48	Sucilá - Calotmul	YUC
49	Suma - Izamal	YUC-081
50	Telchac Puerto - Dzilam de Bravo	YUC
51	Thul - Becanchén	YUC-281
52	Ticul - Chapab	YUC
53	Ticul - Dzan	YUC
54	Tixkokob - Baca	YUC
55	Tixkokob - Sotuta	YUC
56	Tizimín - Yucatán	YUC
57	Yaxché - Sierra Papacal	YUC
58	Yobaín - Chabihau	YUC
---CARRETERAS INTEGRADAS POR TRAMOS FEDERALES Y ESTATALES---		
59	Progreso - Celestún	MEX-YUC

31 YUCATÁN

SECRETARÍA DE COMUNICACIONES Y TRANSPORTES
DIRECCIÓN GENERAL DE SERVICIOS TÉCNICOS



YUCATAN

1 CARR: Campeche - Mérida

CLAVE: 00066

RUTA: MEX-180

AÑO: 2013

LUGAR	ESTACION				CLASIFICACION VEHICULAR EN PORCIENTO													COORDENADAS		
	KM	TE	SC	TDPA	M	A	B	C2	C3	T3S2	T3S3	T3S2R4	OTROS	A	B	C	K'	D	LATITUD	LONGITUD
Campeche	0.00	3	1	4758	5.2	85.7	3.1	4.6	0.5	0.5	0.3	0.0	0.1	90.9	3.1	6.0	0.104	0.523	19.874278	-90.492861
Campeche	0.00	3	2	4334	2.7	87.4	3.5	5.0	0.5	0.5	0.3	0.0	0.1	90.1	3.5	6.4	0.089	0.523	19.874278	-90.492861
T. Der. Libramiento de Campeche	7.00	3	1	5239	1.5	77.3	4.0	4.9	1.5	5.8	1.5	2.8	0.7	78.8	4.0	17.2	0.070	0.516	19.894917	-90.458222
T. Der. Libramiento de Campeche	7.00	3	2	5629	3.1	72.9	4.4	5.4	1.7	6.9	1.6	3.2	0.8	76.0	4.4	19.6	0.063	0.516	19.894917	-90.458222
Tenabo	40.00	1	1	6331	0.8	79.1	3.3	6.8	1.4	3.9	1.1	3.2	0.4	79.9	3.3	16.8	0.058	0.511	20.027500	-90.242833
Tenabo	40.00	1	2	6061	0.7	77.5	3.7	7.0	1.6	4.4	1.1	3.6	0.4	78.2	3.7	18.1	0.058	0.511	20.027500	-90.242833
T. Der. Libramiento de Pomuch (2º Acceso)	50.00	3	1	4046	1.4	78.6	3.6	5.3	1.8	5.0	1.1	2.8	0.4	80.0	3.6	16.4	0.092	0.500	20.149690	-90.163131
T. Der. Libramiento de Pomuch (2º Acceso)	50.00	3	2	4037	1.1	76.0	4.1	5.8	2.1	5.9	1.3	3.3	0.4	77.1	4.1	18.8	0.086	0.500	20.149690	-90.163131
Lim. Edos. Term. Camp. Ppia. Yuc.	96.96																			
Kopomá	124.29	3	1	4339	1.3	79.9	2.4	5.5	2.4	4.1	1.1	2.7	0.6	81.2	2.4	16.4	0.091	0.501	20.663458	-89.889973
Kopomá	124.29	3	2	4315	0.9	78.8	2.7	5.6	2.5	4.7	1.2	3.0	0.6	79.7	2.7	17.6	0.103	0.501	20.663453	-89.889970
T. Der. Libramiento de Chocholá (1º Acceso)	137.89	1	1	2435	1.3	77.0	3.4	6.7	2.7	4.4	1.1	2.9	0.5	78.3	3.4	18.3	0.083	0.511	20.731879	-89.840239
T. Der. Libramiento de Chocholá (1º Acceso)	137.89	1	2	2333	1.1	75.5	3.6	7.3	3.0	4.6	1.2	3.2	0.5	76.6	3.6	19.8	0.082	0.511	20.731871	-89.840241
T. Izq. Umán	146.99	3	1	3883	1.2	79.1	3.1	5.0	2.3	4.1	1.2	3.5	0.5	80.3	3.1	16.6	0.093	0.505	20.800098	-89.807064
T. Izq. Umán	146.99	3	2	3811	0.5	77.4	3.3	5.7	2.6	4.8	1.4	3.8	0.5	77.9	3.3	18.8	0.090	0.505	20.800105	-89.807072
X. C. Campeche - Umán	160.49	1	1	4202	1.5	75.1	3.4	6.3	3.5	4.4	1.3	3.7	0.8	76.6	3.4	20.0	0.095	0.517	20.836533	-89.753919
X. C. Campeche - Umán	160.49	1	2	3920	1.2	72.0	3.9	7.4	3.7	5.3	1.5	4.2	0.8	73.2	3.9	22.9	0.082	0.517	20.836533	-89.753940
T. C. Periférico de Mérida	171.21																			

2 CARR: Campeche - Umán

CLAVE: 00164

RUTA: MEX-261

AÑO: 2013

LUGAR	ESTACION				CLASIFICACION VEHICULAR EN PORCIENTO													COORDENADAS		
	KM	TE	SC	TDPA	M	A	B	C2	C3	T3S2	T3S3	T3S2R4	OTROS	A	B	C	K'	D	LATITUD	LONGITUD
Campeche	0.00																			
X. C. Libramiento de Campeche	7.00	1	0	4919	8.0	80.9	2.0	4.2	0.7	3.3	0.4	0.2	0.3	88.9	2.0	9.1	0.070	0.510	19.850000	-90.470611
X. C. Libramiento de Campeche	7.00	3	0	2167	6.6	78.7	4.6	5.9	1.1	2.2	0.6	0.2	0.1	85.3	4.6	10.1	0.077	0.502	19.849472	-90.465889
T. Izq. Tenabo	30.88	1	0	1248	6.3	79.1	4.5	6.9	1.1	1.6	0.4	0.1	0.0	85.4	4.5	10.1	0.090	0.506	19.804778	-90.276972
T. Izq. Tenabo	30.88	3	0	1353	6.5	76.6	4.7	7.8	1.8	1.6	0.6	0.3	0.1	83.1	4.7	12.2	0.086	0.503	19.804556	-90.273167
T. Der. Edzna	44.51	1	0	1271	9.6	76.9	3.6	6.1	1.4	1.6	0.4	0.3	0.1	86.5	3.6	9.9	0.081	0.504	19.743389	-90.179639
T. Der. Edzna	44.51	3	0	1323	8.2	78.0	3.0	6.6	1.6	1.5	0.5	0.4	0.2	86.2	3.0	10.8	0.080	0.502	19.745111	-90.171056
Hopelchén	84.88	1	0	1653	6.6	77.7	1.9	8.9	2.0	1.6	1.1	0.1	0.1	84.3	1.9	13.8	0.085	0.511	19.752611	-89.854472
Bolonchén de Rejón	117.88	3	0	902	8.0	74.0	1.4	8.7	4.3	1.7	1.5	0.3	0.1	82.0	1.4	16.6	0.088	0.504	20.009333	-89.734667
Lim. Edos. Term. Camp. Ppia. Yuc.	126.88																			
T. Der. Sayil	140.88	1	0	592	4.5	72.5	2.1	10.8	5.0	2.8	1.4	0.8	0.1	77.0	2.1	20.9	0.105	0.513	20.208500	-89.668667
Santa Elena	158.88	1	0	961	17.0	66.2	2.6	8.8	1.7	1.6	1.1	0.8	0.2	83.2	2.6	14.2	0.083	0.510	20.318167	-89.643167

YUCATAN

2 CARR: Campeche - Umán

CLAVE: 00164

RUTA: MEX-261

AÑO: 2013

LUGAR	ESTACION				CLASIFICACION VEHICULAR EN PORCIENTO													COORDENADAS		
	KM	TE	SC	TDPA	M	A	B	C2	C3	T3S2	T3S3	T3S2R4	OTROS	A	B	C	K'	D	LATITUD	LONGITUD
T. Izq. Ruinas de Uxmal	172.48	1	0	651	8.4	72.6	2.6	10.2	1.1	2.2	1.7	1.2	0.0	81.0	2.6	16.4	0.120	0.520	20.361167	-89.761667
Muna	187.43	1	0	1124	3.5	80.5	1.8	9.4	1.8	1.4	0.8	0.6	0.2	84.0	1.8	14.2	0.147	0.538	20.460833	-89.725167
Muna	187.43	3	0	3456	3.5	76.5	1.2	10.9	1.8	1.6	3.6	0.6	0.3	80.0	1.2	18.8	0.090	0.516	20.514500	-89.708833
Xtepén	225.38	1	0	4393	1.5	78.3	1.3	9.5	1.9	2.0	3.8	0.8	0.9	79.8	1.3	18.9	0.076	0.502	20.803440	-89.734161
Umán	230.83	1	0	3168	11.7	73.1	1.5	6.2	2.5	2.0	2.5	0.3	0.2	84.8	1.5	13.7	0.075	0.533	20.869455	-89.746529

3 CARR: Cansahcab - Tizimin

CLAVE: 31014

RUTA: MEX-176

AÑO: 2013

LUGAR	ESTACION				CLASIFICACION VEHICULAR EN PORCIENTO													COORDENADAS		
	KM	TE	SC	TDPA	M	A	B	C2	C3	T3S2	T3S3	T3S2R4	OTROS	A	B	C	K'	D	LATITUD	LONGITUD
Cansahcab	0.00	3	0	2893	7.6	75.2	0.9	8.9	2.7	2.5	0.7	1.2	0.3	82.8	0.9	16.3	0.087	0.510	21.156900	-89.079341
Temax	16.73	3	0	2519	2.3	81.2	1.8	6.5	2.7	2.9	0.9	0.8	0.9	83.5	1.8	14.7	0.064	0.501	21.155148	-88.916594
Buctzotz	32.92	3	0	2644	3.3	79.9	1.3	7.8	2.5	2.6	1.0	1.4	0.2	83.2	1.3	15.5	0.093	0.507	21.199993	-88.777233
Tizimin	99.14	1	0	2867	4.6	78.2	1.5	7.6	2.6	3.0	0.9	1.4	0.2	82.8	1.5	15.7	0.081	0.534	21.150186	-88.186543

4 CARR: Conkal - Puerto Chicxulub

CLAVE: 31004

RUTA: MEX-176

AÑO: 2013

LUGAR	ESTACION				CLASIFICACION VEHICULAR EN PORCIENTO													COORDENADAS		
	KM	TE	SC	TDPA	M	A	B	C2	C3	T3S2	T3S3	T3S2R4	OTROS	A	B	C	K'	D	LATITUD	LONGITUD
Conkal	0.00	3	0	2465	24.5	64.4	2.0	4.6	1.6	2.3	0.4	0.0	0.2	88.9	2.0	9.1	0.083	0.525	21.084355	-89.519963
Puerto Chicxulub	27.00	1	0	972	6.6	83.1	1.3	5.6	1.2	1.6	0.5	0.0	0.1	89.7	1.3	9.0	0.123	0.521	21.285428	-89.600566

5 CARR: Dzitbalché - Ent. San Bernardo

CLAVE: 00162

RUTA: MEX-180

AÑO: 2013

LUGAR	ESTACION				CLASIFICACION VEHICULAR EN PORCIENTO													COORDENADAS		
	KM	TE	SC	TDPA	M	A	B	C2	C3	T3S2	T3S3	T3S2R4	OTROS	A	B	C	K'	D	LATITUD	LONGITUD
T. C. Campeche - Mérida	0.00																			
T. Izq. Libramiento de Becal (1º Acceso)	12.33	1	0	2773	13.7	74.7	2.5	5.8	0.6	1.4	0.2	0.4	0.7	88.4	2.5	9.1	0.085	0.512	20.417681	-90.034465
T. Izq. Libramiento de Becal (2º Acceso)	15.41	3	0	1593	13.7	75.0	2.3	6.6	1.0	1.3	0.1	0.0	0.0	88.7	2.3	9.0	0.085	0.505	20.451167	-90.041000
Lim. Edos. Term. Camp. Ppia. Yuc.	15.80																			
Halachó	21.08	1	0	1484	15.2	73.6	1.6	7.1	1.0	1.3	0.1	0.0	0.1	88.8	1.6	9.6	0.092	0.500	20.467667	-90.064333
T. Izq. Libramiento de Maxcanú (1º Acceso)	35.60	1	0	2303	17.8	63.6	1.9	12.5	1.8	1.4	0.4	0.5	0.1	81.4	1.9	16.7	0.070	0.511	20.577500	-90.034000
T. Der. Muna	40.36	3	0	4355	5.6	73.6	1.9	14.9	1.4	1.8	0.2	0.3	0.3	79.2	1.9	18.9	0.095	0.513	20.601833	-89.975167
Ent. San Bernardo	41.53																			

YUCATAN

6 CARR: Ent. Poxilá - Mérida

CLAVE: 31003

RUTA: MEX-180

AÑO: 2013

LUGAR	ESTACION				CLASIFICACION VEHICULAR EN PORCIENTO													COORDENADAS			
	KM	TE	SC	TDPA	M	A	B	C2	C3	T3S2	T3S3	T3S2R4	OTROS	A	B	C	K'	D	LATITUD	LONGITUD	
T. C. Campeche - Mérida	0.00																				
Umán	9.46	1	0	2332	7.0	74.5	2.2	6.9	3.8	4.0	0.9	0.4	0.3	81.5	2.2	16.3	0.084	0.506	20.866655	-89.757773	
X. Periférico de Mérida	16.37	1	1	12591	6.1	81.2	3.1	3.7	1.5	2.1	1.1	0.7	0.5	87.3	3.1	9.6	0.089	0.502	20.922216	-89.693508	
X. Periférico de Mérida	16.37	1	2	12468	6.6	79.5	3.3	3.9	1.5	2.4	1.3	0.8	0.7	86.1	3.3	10.6	0.089	0.502	20.922214	-89.693512	
Mérida	25.70	1	1	17213	4.6	80.4	3.7	5.0	1.9	1.5	1.3	0.9	0.7	85.0	3.7	11.3	0.097	0.511	20.927070	-89.683676	
Mérida	25.70	1	2	16496	5.1	78.6	4.0	5.6	2.2	1.6	1.3	0.9	0.7	83.7	4.0	12.3	0.075	0.511	20.927068	-89.683690	

7 CARR: Hunucmá - Sisal

CLAVE: 31021

RUTA: MEX-281

AÑO: 2013

LUGAR	ESTACION				CLASIFICACION VEHICULAR EN PORCIENTO													COORDENADAS		
	KM	TE	SC	TDPA	M	A	B	C2	C3	T3S2	T3S3	T3S2R4	OTROS	A	B	C	K'	D	LATITUD	LONGITUD
Hunucmá	0.00	3	0	1170	6.9	81.2	3.2	5.2	1.0	1.7	0.3	0.3	0.2	88.1	3.2	8.7	0.126	0.505	21.029149	-89.894852
Sisal	23.20	1	0	836	6.5	82.9	3.4	5.5	0.4	1.1	0.1	0.0	0.1	89.4	3.4	7.2	0.169	0.503	21.161476	-90.030148

8 CARR: Libramiento de Progreso

CLAVE: 31631

RUTA: MEX-261

AÑO: 2013

LUGAR	ESTACION				CLASIFICACION VEHICULAR EN PORCIENTO													COORDENADAS		
	KM	TE	SC	TDPA	M	A	B	C2	C3	T3S2	T3S3	T3S2R4	OTROS	A	B	C	K'	D	LATITUD	LONGITUD
T. C. Mérida - Progreso	0.00	3	0	1294	3.1	90.1	1.0	3.6	0.6	1.4	0.1	0.0	0.1	93.2	1.0	5.8	0.087	0.501	21.258219	-89.664947
Yucalpetén	6.50	1	0	1253	3.8	89.5	1.7	2.9	0.4	1.5	0.1	0.0	0.1	93.3	1.7	5.0	0.088	0.502	21.271290	-89.712287

9 CARR: Mérida - Celestún

CLAVE: 31025

RUTA: MEX-281

AÑO: 2013

LUGAR	ESTACION				CLASIFICACION VEHICULAR EN PORCIENTO													COORDENADAS		
	KM	TE	SC	TDPA	M	A	B	C2	C3	T3S2	T3S3	T3S2R4	OTROS	A	B	C	K'	D	LATITUD	LONGITUD
Mérida	0.00	3	1	16158	5.0	82.0	3.9	4.3	0.3	1.2	2.4	0.4	0.5	87.0	3.9	9.1	0.085	0.520	20.986987	-89.659268
Mérida	0.00	3	2	17535	4.6	81.2	4.2	4.9	0.3	1.4	2.5	0.4	0.5	85.8	4.2	10.0	0.089	0.520	20.987000	-89.659233
X. Periférico de Mérida	5.10	1	1	24688	5.2	84.3	2.8	4.3	1.2	1.2	0.6	0.3	0.1	89.5	2.8	7.7	0.066	0.507	20.993716	-89.670456
X. Periférico de Mérida	5.10	1	2	25400	5.0	83.2	3.1	5.0	1.4	1.2	0.7	0.3	0.1	88.2	3.1	8.7	0.066	0.507	20.993717	-89.670454
X. Periférico de Mérida	5.10	3	1	16479	4.5	87.9	2.0	2.3	0.2	1.1	1.7	0.1	0.2	92.4	2.0	5.6	0.080	0.540	20.997928	-89.676929
X. Periférico de Mérida	5.10	3	2	19326	5.0	86.7	2.1	2.6	0.2	1.2	1.9	0.1	0.2	91.7	2.1	6.2	0.087	0.540	20.997920	-89.676918
Hunucmá	26.00	1	0	4085	14.4	68.8	5.1	7.1	1.6	1.9	0.5	0.3	0.3	83.2	5.1	11.7	0.080	0.503	21.027480	-89.850377
Hunucmá	26.00	3	0	1862	16.1	68.3	4.3	7.0	1.0	2.3	0.5	0.2	0.3	84.4	4.3	11.3	0.079	0.515	21.002228	-89.886685
Kinchil	40.00	3	0	1186	10.2	76.5	1.8	7.6	1.1	2.0	0.4	0.2	0.2	86.7	1.8	11.5	0.134	0.517	20.911863	-89.962483
T. Izq. San Mateo	67.00	1	0	962	1.5	81.4	5.5	8.5	1.7	0.8	0.2	0.2	0.2	82.9	5.5	11.6	0.159	0.502	20.859827	-90.186979

YUCATAN

9 CARR: Mérida - Celestún

CLAVE: 31025

RUTA: MEX-281

AÑO: 2013

LUGAR	ESTACION				CLASIFICACION VEHICULAR EN PORCIENTO														COORDENADAS	
	KM	TE	SC	TDPA	M	A	B	C2	C3	T3S2	T3S3	T3S2R4	OTROS	A	B	C	K'	D	LATITUD	LONGITUD
Celestún	89.00	1	0	989	11.2	74.0	3.6	7.1	1.7	1.5	0.4	0.3	0.2	85.2	3.6	11.2	0.131	0.510	20.857517	-90.380955

10 CARR: Mérida - Dzilam de Bravo

CLAVE: 31001

RUTA: MEX-176

AÑO: 2013

LUGAR	ESTACION				CLASIFICACION VEHICULAR EN PORCIENTO														COORDENADAS	
	KM	TE	SC	TDPA	M	A	B	C2	C3	T3S2	T3S3	T3S2R4	OTROS	A	B	C	K'	D	LATITUD	LONGITUD
Mérida	0.00																			
X. Periférico de Mérida	5.90	1	1	7894	3.0	85.7	2.8	4.1	0.6	2.2	1.2	0.2	0.2	88.7	2.8	8.5	0.073	0.503	21.019868	-89.568161
X. Periférico de Mérida	5.90	1	2	7959	3.6	84.4	3.1	4.2	0.6	2.3	1.4	0.2	0.2	88.0	3.1	8.9	0.087	0.503	21.019870	-89.568163
X. Periférico de Mérida	5.90	3	1	10422	4.5	86.2	2.0	4.1	0.9	1.1	0.6	0.3	0.3	90.7	2.0	7.3	0.095	0.506	21.036251	-89.552024
X. Periférico de Mérida	5.90	3	2	10683	4.3	85.2	2.3	4.8	1.1	1.1	0.6	0.3	0.3	89.5	2.3	8.2	0.098	0.506	21.036248	-89.552026
Conkal	18.00	1	1	8098	5.6	85.2	2.1	3.7	1.1	1.1	0.6	0.4	0.2	90.8	2.1	7.1	0.099	0.501	21.050366	-89.538171
Conkal	18.00	1	2	8121	4.5	85.3	2.3	4.1	1.3	1.3	0.6	0.4	0.2	89.8	2.3	7.9	0.102	0.501	21.050379	-89.538176
Baca	34.40	1	0	1463	37.3	53.6	3.2	3.3	0.7	1.3	0.2	0.3	0.1	90.9	3.2	5.9	0.102	0.510	21.108932	-89.410532
Motul	44.00	1	1	3190	7.4	82.0	2.1	3.4	2.1	1.8	0.5	0.5	0.2	89.4	2.1	8.5	0.113	0.508	21.097775	-89.312415
Motul	44.00	1	2	3096	7.8	81.0	2.4	3.7	2.2	1.8	0.4	0.5	0.2	88.8	2.4	8.8	0.108	0.508	21.097779	-89.312413
Motul	44.00	3	0	4134	2.6	82.9	2.6	3.2	2.6	3.5	0.6	1.4	0.6	85.5	2.6	11.9	0.077	0.516	21.115711	-89.270946
Cansahcab	68.00	3	0	1539	11.8	78.9	0.3	6.5	1.0	1.1	0.2	0.1	0.1	90.7	0.3	9.0	0.099	0.503	21.166385	-89.100558
Dzidzantún	80.00	1	0	1545	12.8	78.7	0.3	6.0	1.2	0.8	0.1	0.1	0.0	91.5	0.3	8.2	0.096	0.503	21.235587	-89.051570
Dzilam de Bravo	105.00	1	0	1154	4.1	86.1	2.6	3.6	0.4	1.9	1.0	0.2	0.1	90.2	2.6	7.2	0.091	0.522	21.390014	-88.891948

11 CARR: Mérida - Progreso

CLAVE: 31091

RUTA: MEX-261

AÑO: 2013

LUGAR	ESTACION				CLASIFICACION VEHICULAR EN PORCIENTO														COORDENADAS	
	KM	TE	SC	TDPA	M	A	B	C2	C3	T3S2	T3S3	T3S2R4	OTROS	A	B	C	K'	D	LATITUD	LONGITUD
T. C. Mérida - Dzilam de Bravo	0.00																			
Periférico Mérida	5.40	1	1	17720	1.7	93.8	0.2	2.4	0.2	0.5	1.0	0.1	0.1	95.5	0.2	4.3	0.084	0.507	21.043175	-89.629080
Periférico Mérida	5.40	1	2	17265	2.0	93.1	0.2	2.7	0.2	0.5	1.1	0.1	0.1	95.1	0.2	4.7	0.076	0.507	21.043173	-89.629082
T. Izq. Dzityá	10.40	1	1	19273	1.7	88.1	4.1	2.8	0.5	1.1	1.1	0.3	0.3	89.8	4.1	6.1	0.089	0.501	21.051154	-89.630408
T. Izq. Dzityá	10.40	1	2	19204	2.1	86.7	4.5	3.2	0.5	1.2	1.2	0.3	0.3	88.8	4.5	6.7	0.081	0.501	21.051148	-89.630405
T. Izq. Dzityá	10.40	3	1	15276	1.7	88.1	2.9	3.9	1.2	0.9	0.7	0.4	0.2	89.8	2.9	7.3	0.100	0.518	21.064562	-89.632636
T. Izq. Dzityá	10.40	3	2	14186	2.2	86.4	3.1	4.4	1.4	1.1	0.8	0.4	0.2	88.6	3.1	8.3	0.096	0.518	21.064552	-89.632641
Progreso	35.04	1	1	7274	1.7	84.0	3.4	3.8	1.3	2.7	1.5	1.1	0.5	85.7	3.4	10.9	0.062	0.506	21.268189	-89.660601
Progreso	35.04	1	2	7092	1.6	82.4	3.8	4.3	1.5	3.0	1.6	1.3	0.5	84.0	3.8	12.2	0.070	0.506	21.270832	-89.661625

YUCATAN

12 CARR: Mérida - Puerto Juárez

CLAVE: 00067

RUTA: MEX-180

AÑO: 2013

LUGAR	ESTACION				CLASIFICACION VEHICULAR EN PORCIENTO										COORDENADAS					
	KM	TE	SC	TDPA	M	A	B	C2	C3	T3S2	T3S3	T3S2R4	OTROS	A	B	C	K'	D	LATITUD	LONGITUD
Mérida	0.00																			
X. Periférico de Mérida	5.60	1	1	10160	4.6	87.8	1.4	3.5	0.3	1.2	0.8	0.1	0.3	92.4	1.4	6.2	0.080	0.501	20.957355	-89.571923
X. Periférico de Mérida	5.60	1	2	10193	4.7	87.1	1.7	3.8	0.3	1.2	0.8	0.1	0.3	91.8	1.7	6.5	0.072	0.501	20.957356	-89.571931
X. Periférico de Mérida	5.60	3	1	10906	6.3	79.3	1.7	5.5	1.3	2.2	1.5	1.4	0.8	85.6	1.7	12.7	0.074	0.509	20.955090	-89.566575
X. Periférico de Mérida	5.60	3	2	11288	6.6	77.6	1.8	6.1	1.4	2.5	1.6	1.6	0.8	84.2	1.8	14.0	0.071	0.509	20.955087	-89.566580
Teya	13.00	1	1	8479	2.4	81.5	2.2	7.0	2.0	2.1	0.6	1.8	0.4	83.9	2.2	13.9	0.081	0.517	20.936534	-89.532177
Teya	13.00	1	2	7934	2.9	79.5	2.6	7.8	2.2	2.2	0.6	1.8	0.4	82.4	2.6	15.0	0.081	0.517	20.936534	-89.532179
T. Der. Seyé	28.79	1	1	4722	1.5	81.7	3.0	7.6	1.4	1.9	0.6	2.1	0.2	83.2	3.0	13.8	0.084	0.502	20.891954	-89.383904
T. Der. Seyé	28.79	1	2	4756	2.1	79.0	3.3	8.6	1.6	2.1	0.8	2.3	0.2	81.1	3.3	15.6	0.080	0.502	20.891958	-89.383930
T. Der. Seyé	28.79	3	1	3985	1.1	82.1	3.5	6.7	1.5	2.0	0.6	2.4	0.1	83.2	3.5	13.3	0.080	0.519	20.891927	-89.371407
T. Der. Seyé	28.79	3	2	4304	0.8	81.0	3.9	7.2	1.8	2.1	0.5	2.6	0.1	81.8	3.9	14.3	0.119	0.540	20.891918	-89.371377
Tahmek	42.00	1	1	4298	1.7	78.5	3.8	9.0	2.3	1.7	0.7	2.2	0.1	80.2	3.8	16.0	0.081	0.504	20.875732	-89.271704
Tahmek	42.00	1	2	4372	1.3	77.0	4.3	9.6	2.7	1.9	0.7	2.4	0.1	78.3	4.3	17.4	0.076	0.504	20.875716	-89.271732
T. Izq. Hoctún (1º Acceso)	46.65	1	0	2157	5.8	71.8	3.2	11.4	2.5	2.9	1.4	0.5	0.5	77.6	3.2	19.2	0.093	0.507	20.868130	-89.216838
T. Izq. Hoctún (2º Acceso)	48.62	1	0	1037	6.2	72.6	2.0	10.1	3.4	3.0	1.0	1.7	0.0	78.8	2.0	19.2	0.091	0.501	20.859036	-89.204294
T. Izq. Hoctún (2º Acceso)	48.62	3	0	1845	6.3	74.1	2.7	11.2	2.6	2.4	0.4	0.3	0.0	80.4	2.7	16.9	0.090	0.510	20.854527	-89.196049
Kantunil	67.28	3	0	2592	4.6	76.8	3.3	7.6	3.2	2.1	0.6	0.6	1.2	81.4	3.3	15.3	0.078	0.510	20.791362	-89.019255
Libre Unión	92.91	1	0	2356	2.4	78.7	2.9	8.3	4.7	1.3	0.9	0.4	0.4	81.1	2.9	16.0	0.061	0.507	20.708445	-88.816206
Libre Unión	92.91	3	0	2327	2.4	77.8	5.0	8.2	3.3	2.3	0.7	0.2	0.1	80.2	5.0	14.8	0.088	0.514	20.706851	-88.801348
Piste	116.30	3	0	5608	6.9	76.4	3.2	6.5	1.8	3.5	0.7	0.5	0.5	83.3	3.2	13.5	0.135	0.500	20.690818	-88.579453
1er. Acceso a Zona Arqueológica de Chichen-Itzá	117.90	3	0	4369	7.0	77.0	3.2	7.6	1.7	2.5	0.6	0.2	0.2	84.0	3.2	12.8	0.077	0.514	20.688160	-88.575326
2do. Acceso a Zona Arqueológica de Chichen-Itzá	121.10	3	0	4160	5.9	78.2	3.6	7.7	1.7	2.0	0.5	0.2	0.2	84.1	3.6	12.3	0.077	0.505	20.670242	-88.558648
T. Der. Chankom	127.00	1	0	3320	3.5	79.6	3.7	7.6	2.8	1.9	0.5	0.3	0.1	83.1	3.7	13.2	0.075	0.519	20.642705	-88.490474
T. Der. Chankom	127.00	3	0	3518	3.4	79.3	3.4	9.0	2.1	2.0	0.5	0.2	0.1	82.7	3.4	13.9	0.080	0.502	20.641604	-88.486963
Valladolid	160.68	1	0	4937	5.0	79.7	3.5	6.6	1.7	2.5	0.3	0.5	0.2	84.7	3.5	11.8	0.086	0.529	20.684649	-88.230572
Valladolid	160.68	3	0	5399	4.0	80.1	2.9	6.8	1.8	3.0	0.6	0.4	0.4	84.1	2.9	13.0	0.087	0.517	20.693503	-88.170846
T. Der. Coba	187.80	1	0	4720	2.1	82.2	3.3	6.7	1.6	2.4	0.7	0.7	0.3	84.3	3.3	12.4	0.099	0.506	20.659355	-87.960244
T. Der. Chemax	189.79	1	0	3236	4.2	82.2	2.1	6.4	2.1	1.9	0.6	0.3	0.2	86.4	2.1	11.5	0.100	0.515	20.657879	-87.951542
T. Der. Chemax	189.79	3	0	2800	3.6	81.3	3.3	5.9	2.2	2.2	0.8	0.5	0.2	84.9	3.3	11.8	0.089	0.506	20.664023	-87.925895
X-Can	225.00	3	0	2226	1.6	78.3	4.6	6.6	3.6	3.0	0.9	0.9	0.5	79.9	4.6	15.5	0.106	0.507	20.860717	-87.655065
Lim. Edos. Term. Yuc. Ppia. Q. R.	230.40																			
Nuevo X-Can	231.90	3	0	2677	1.9	82.9	3.8	5.8	2.0	2.1	0.7	0.4	0.4	84.8	3.8	11.4	0.099	0.503	20.871572	-87.591235
Zaragoza	239.00	1	0	3631	2.4	82.3	3.6	5.4	1.7	2.7	0.7	0.5	0.7	84.7	3.6	11.7	0.081	0.505	20.880862	-87.536154
Vicente Guerrero	261.00	1	0	2867	2.5	81.7	4.2	5.5	2.2	2.6	0.6	0.5	0.2	84.2	4.2	11.6	0.099	0.505	20.940854	-87.331902
Leona Vicario	275.50	1	0	4647	1.7	79.7	4.6	6.4	2.3	3.1	0.9	0.6	0.7	81.4	4.6	14.0	0.072	0.509	20.980167	-87.225000

YUCATAN

12 CARR: Mérida - Puerto Juárez

CLAVE: 00067

RUTA: MEX-180

AÑO: 2013

LUGAR	ESTACION				CLASIFICACION VEHICULAR EN PORCIENTO													COORDENADAS		
	KM	TE	SC	TDPA	M	A	B	C2	C3	T3S2	T3S3	T3S2R4	OTROS	A	B	C	K'	D	LATITUD	LONGITUD
Leona Vicario	275.50	3	0	5495	5.1	79.7	3.5	5.7	1.4	3.2	0.6	0.4	0.4	84.8	3.5	11.7	0.084	0.503	20.993616	-87.188249
T. Der. Aeropuerto	302.50	1	0	5938	1.2	82.4	2.0	8.1	1.8	2.3	1.3	0.2	0.7	83.6	2.0	14.4	0.088	0.511	21.096167	-86.983333
T. Der. Aeropuerto	302.50	3	1	3623	2.1	80.3	2.2	8.7	2.3	1.8	1.1	1.2	0.3	82.4	2.2	15.4	0.094	0.502	21.102833	-86.969833
T. Der. Aeropuerto	302.50	3	2	3651	2.0	78.5	2.5	9.5	2.7	2.1	1.2	1.3	0.2	80.5	2.5	17.0	0.108	0.502	21.102833	-86.969833
T. Der. Alfredo V. Bonfil	310.00	1	1	16257	4.2	85.4	0.3	4.3	0.7	1.5	2.6	0.4	0.6	89.6	0.3	10.1	0.070	0.510	21.139167	-86.896833
T. Der. Alfredo V. Bonfil	310.00	1	2	16901	3.8	84.6	0.3	4.7	0.8	1.7	3.1	0.4	0.6	88.4	0.3	11.3	0.071	0.510	21.139167	-86.896833
Puerto Juárez	321.41																			

13 CARR: Mérida - Tekanto

CLAVE: 31587

RUTA: MEX-180

AÑO: 2013

LUGAR	ESTACION				CLASIFICACION VEHICULAR EN PORCIENTO													COORDENADAS		
	KM	TE	SC	TDPA	M	A	B	C2	C3	T3S2	T3S3	T3S2R4	OTROS	A	B	C	K'	D	LATITUD	LONGITUD
T. C. Mérida - Puerto Juárez	0.00																			
X. Periférico de Mérida	5.70	1	0	10386	11.0	73.6	1.6	5.3	0.3	6.2	0.9	0.3	0.8	84.6	1.6	13.8	0.068	0.509	20.961354	-89.569870
T. Der. Tixpéhual	13.25	1	0	5429	11.1	75.4	5.3	3.6	1.5	2.3	0.4	0.1	0.3	86.5	5.3	8.2	0.082	0.507	20.976603	-89.462367
T. Der. Tixpéhual	13.25	3	0	4003	7.2	79.8	6.2	3.2	1.5	1.6	0.3	0.1	0.1	87.0	6.2	6.8	0.086	0.509	20.981749	-89.454839
Tixkokob	21.00	1	0	3945	6.9	80.8	5.6	3.0	1.3	1.7	0.4	0.1	0.2	87.7	5.6	6.7	0.083	0.509	21.005603	-89.418522
Tixkokob	21.00	3	0	2825	22.9	63.0	6.5	3.5	1.5	2.0	0.4	0.0	0.2	85.9	6.5	7.6	0.092	0.503	21.000826	-89.379641
Cacalchén	38.00	1	0	1504	19.5	65.8	6.7	4.1	0.3	2.0	1.1	0.2	0.3	85.3	6.7	8.0	0.095	0.502	20.985236	-89.242756
Tekanto	51.00	1	0	919	30.3	54.7	7.5	4.5	1.2	1.6	0.2	0.0	0.0	85.0	7.5	7.5	0.108	0.503	21.010332	-89.120701

14 CARR: Muna - Felipe Carrillo Puerto

CLAVE: 00148

RUTA: MEX-184

AÑO: 2013

LUGAR	ESTACION				CLASIFICACION VEHICULAR EN PORCIENTO													COORDENADAS		
	KM	TE	SC	TDPA	M	A	B	C2	C3	T3S2	T3S3	T3S2R4	OTROS	A	B	C	K'	D	LATITUD	LONGITUD
Muna	0.00	3	0	4010	7.5	79.7	1.0	5.8	1.2	2.9	0.9	0.4	0.6	87.2	1.0	11.8	0.068	0.504	20.478167	-89.698500
Ticul	19.10	1	0	3813	6.9	78.7	1.1	8.1	1.6	1.9	0.8	0.5	0.4	85.6	1.1	13.3	0.085	0.501	20.403333	-89.567833
Ticul	19.10	3	0	5167	14.8	71.1	0.9	8.8	0.3	3.3	0.4	0.1	0.3	85.9	0.9	13.2	0.082	0.525	20.373833	-89.518000
Oxkutzcab	40.50	3	0	4693	15.5	69.9	0.9	9.4	0.9	1.8	0.7	0.4	0.5	85.4	0.9	13.7	0.074	0.501	20.283528	-89.378363
Tekax	53.90	3	0	3080	21.1	64.6	0.9	7.1	1.0	3.1	1.2	0.4	0.6	85.7	0.9	13.4	0.081	0.513	20.188297	-89.267955
Tzucacab	86.60	1	0	1709	13.5	69.9	3.5	10.8	1.1	1.1	0.1	0.0	0.0	83.4	3.5	13.1	0.065	0.522	20.079213	-89.063313
Tzucacab	86.60	3	0	1308	23.0	67.2	0.7	6.3	1.5	0.8	0.4	0.1	0.0	90.2	0.7	9.1	0.076	0.525	20.065383	-89.038428
Santa Rosa	109.60	3	0	2274	2.6	80.0	2.3	7.6	1.9	2.2	1.4	1.7	0.3	82.6	2.3	15.1	0.072	0.503	19.947461	-88.880344
Lim. Edos. Term. Yuc. Ppia. O. R.	117.00																			
Dziuche	118.00	1	0	1991	3.3	78.2	2.4	8.1	2.2	2.3	1.0	2.1	0.4	81.5	2.4	16.1	0.085	0.522	19.905894	-88.820205

YUCATAN

14 CARR: Muna - Felipe Carrillo Puerto

CLAVE: 00148

RUTA: MEX-184

AÑO: 2013

LUGAR	ESTACION				CLASIFICACION VEHICULAR EN PORCIENTO													COORDENADAS		
	KM	TE	SC	TDPA	M	A	B	C2	C3	T3S2	T3S3	T3S2R4	OTROS	A	B	C	K'	D	LATITUD	LONGITUD
Dziuche	118.00	3	0	2664	2.3	79.5	1.8	7.4	2.7	2.3	1.5	2.0	0.5	81.8	1.8	16.4	0.079	0.508	19.886716	-88.802599
José María Morelos	138.60	1	0	3591	2.8	82.2	1.9	6.8	2.1	2.0	0.8	1.1	0.3	85.0	1.9	13.1	0.069	0.509	19.763777	-88.724591
José María Morelos	138.60	3	0	2856	6.3	77.1	2.2	7.5	1.7	2.1	1.2	1.7	0.2	83.4	2.2	14.4	0.066	0.504	19.741642	-88.698372
Polyuc	161.94	1	0	2309	2.5	78.5	3.0	7.2	2.1	2.3	1.2	2.1	1.1	81.0	3.0	16.0	0.071	0.520	19.611831	-88.571842
Polyuc	161.94	3	0	1330	5.6	77.7	3.5	7.8	1.4	1.8	0.7	1.4	0.1	83.3	3.5	13.2	0.077	0.508	19.609491	-88.555573
T. Der. Dzulá	178.11	3	0	1383	5.1	78.8	2.1	9.6	1.6	1.3	0.5	0.8	0.2	83.9	2.1	14.0	0.074	0.519	19.643490	-88.406780
Felipe Carrillo Puerto	216.97	1	0	5047	17.9	66.3	4.3	4.1	2.6	3.5	0.5	0.3	0.5	84.2	4.3	11.5	0.074	0.514	19.583822	-88.055551

15 CARR: Ramal a Panabá

CLAVE: 31609

RUTA: MEX-295

AÑO: 2013

LUGAR	ESTACION				CLASIFICACION VEHICULAR EN PORCIENTO													COORDENADAS		
	KM	TE	SC	TDPA	M	A	B	C2	C3	T3S2	T3S3	T3S2R4	OTROS	A	B	C	K'	D	LATITUD	LONGITUD
T. C. Valladolid - Río Lagartos	0.00	3	0	1245	17.6	74.3	2.8	4.3	0.7	0.2	0.1	0.0	0.0	91.9	2.8	5.3	0.094	0.505	21.194186	-88.170153
Panabá	18.00	1	0	1078	18.8	72.1	1.4	5.9	0.8	0.9	0.1	0.0	0.0	90.9	1.4	7.7	0.098	0.503	21.285054	-88.268889

16 CARR: Teya -Peto

CLAVE: 31042

RUTA: MEX-184

AÑO: 2013

LUGAR	ESTACION				CLASIFICACION VEHICULAR EN PORCIENTO													COORDENADAS		
	KM	TE	SC	TDPA	M	A	B	C2	C3	T3S2	T3S3	T3S2R4	OTROS	A	B	C	K'	D	LATITUD	LONGITUD
T. C. Mérida - Puerto Juárez	0.00																			
San Antonio Tehuizt	3.80	3	0	6724	3.8	78.9	2.2	7.8	1.5	3.4	0.9	1.0	0.5	82.7	2.2	15.1	0.090	0.501	20.888500	-89.508333
T. Izq. Acanceh	13.70	1	0	6147	2.7	77.5	2.7	7.4	2.9	3.5	1.1	1.6	0.6	80.2	2.7	17.1	0.064	0.503	20.814333	-89.472333
T. Der. Zona Arq. de Mayapan	37.65	1	0	3841	1.5	79.1	2.5	7.7	3.2	2.8	1.3	1.8	0.1	80.6	2.5	16.9	0.070	0.511	20.635333	-89.460167
T. Izq. Teabo	69.05	1	1	1746	2.1	82.5	1.3	5.0	3.0	2.4	1.4	2.1	0.2	84.6	1.3	14.1	0.074	0.508	20.407500	-89.306833
T. Izq. Teabo	69.05	1	2	1804	2.1	80.3	1.4	5.8	3.5	2.8	1.6	2.3	0.2	82.4	1.4	16.2	0.060	0.508	20.407500	-89.306833
T. Izq. Tixmehuac	97.10	1	0	1965	1.3	76.5	2.6	8.8	3.5	2.6	1.7	2.8	0.2	77.8	2.6	19.6	0.074	0.501	20.230902	-89.129487
Peto	120.70	1	0	2473	3.5	77.0	2.5	7.8	3.1	2.1	1.2	2.4	0.4	80.5	2.5	17.0	0.062	0.501	20.124463	-88.950588

17 CARR: Tzucacab - Santa Rosa

CLAVE: 31017

RUTA: MEX

AÑO: 2013

LUGAR	ESTACION				CLASIFICACION VEHICULAR EN PORCIENTO													COORDENADAS		
	KM	TE	SC	TDPA	M	A	B	C2	C3	T3S2	T3S3	T3S2R4	OTROS	A	B	C	K'	D	LATITUD	LONGITUD
Tzucacab	0.00	3	0	1329	3.6	77.0	3.5	8.0	3.1	2.2	1.4	0.9	0.3	80.6	3.5	15.9	0.076	0.503	20.073579	-89.035997
Peto	16.00	3	0	2087	6.4	74.8	2.9	7.1	2.3	2.2	1.5	2.6	0.2	81.2	2.9	15.9	0.071	0.531	20.083716	-88.911940
Santa Rosa	34.50	1	0	1611	3.7	74.7	3.4	8.9	2.7	2.2	1.4	2.8	0.2	78.4	3.4	18.2	0.083	0.502	19.962222	-88.881268

YUCATAN

18 CARR: Valladolid - Felipe Carrillo Puerto

CLAVE: 00010

RUTA: MEX-295

AÑO: 2013

LUGAR	ESTACION				CLASIFICACION VEHICULAR EN PORCIENTO										COORDENADAS					
	KM	TE	SC	TDPA	M	A	B	C2	C3	T3S2	T3S3	T3S2R4	OTROS	A	B	C	K'	D	LATITUD	LONGITUD
Valladolid	0.00	3	0	4777	5.5	86.7	0.4	4.0	0.3	2.3	0.4	0.1	0.3	92.2	0.4	7.4	0.097	0.501	20.673914	-88.204313
Chichimilá	6.90	3	0	2105	0.9	91.1	0.5	4.3	1.3	0.9	0.4	0.2	0.4	92.0	0.5	7.5	0.086	0.517	20.623623	-88.230978
Tekom	12.05	3	0	1442	8.7	83.3	1.3	4.1	1.3	1.0	0.2	0.0	0.1	92.0	1.3	6.7	0.079	0.508	20.590705	-88.265333
Tixcacalcupul	19.80	3	0	975	8.0	82.2	1.7	5.7	0.9	1.0	0.1	0.3	0.1	90.2	1.7	8.1	0.081	0.509	20.528524	-88.271398
Lim. Edos. Term. Yuc. Ppia. O. R.	46.00																			
Tepich	51.40	1	0	652	8.1	79.1	2.2	8.0	0.9	0.8	0.5	0.3	0.1	87.2	2.2	10.6	0.090	0.509	20.249439	-88.255090
Tihosuco	65.00	1	0	756	10.6	77.0	2.8	7.1	0.6	1.4	0.1	0.4	0.0	87.6	2.8	9.6	0.097	0.508	20.193427	-88.362466
Tihosuco	65.00	3	0	875	13.3	75.8	2.7	5.7	0.7	1.0	0.4	0.3	0.1	89.1	2.7	8.2	0.094	0.506	20.188543	-88.388209
T. Izq. San Felipe Berriozábal	99.00	1	0	540	6.0	83.9	0.8	6.7	1.2	0.8	0.3	0.3	0.0	89.9	0.8	9.3	0.087	0.506	19.962379	-88.241512
T. Izq. San Felipe Berriozábal	99.00	3	0	597	5.7	83.8	1.1	7.2	0.7	0.7	0.5	0.3	0.0	89.5	1.1	9.4	0.087	0.519	19.961512	-88.240586
Señor	116.50	1	0	886	13.9	75.0	0.8	8.2	0.4	1.3	0.2	0.2	0.0	88.9	0.8	10.3	0.093	0.504	19.853000	-88.145026
Señor	116.50	3	0	1146	8.3	80.0	1.3	8.6	0.7	0.7	0.2	0.2	0.0	88.3	1.3	10.4	0.100	0.507	19.832832	-88.131715
Felipe Carrillo Puerto	147.70	1	0	1341	4.3	80.6	3.6	8.5	1.6	0.9	0.4	0.1	0.0	84.9	3.6	11.5	0.079	0.504	19.602805	-88.053729

19 CARR: Valladolid - Río Lagartos

CLAVE: 31035

RUTA: MEX-295

AÑO: 2013

LUGAR	ESTACION				CLASIFICACION VEHICULAR EN PORCIENTO										COORDENADAS					
	KM	TE	SC	TDPA	M	A	B	C2	C3	T3S2	T3S3	T3S2R4	OTROS	A	B	C	K'	D	LATITUD	LONGITUD
Valladolid	0.00	3	1	3946	5.5	85.1	1.9	4.3	0.7	1.2	0.4	0.7	0.2	90.6	1.9	7.5	0.071	0.500	20.728938	-88.203005
Valladolid	0.00	3	2	3946	6.6	83.0	2.2	4.9	0.7	1.2	0.4	0.8	0.2	89.6	2.2	8.2	0.069	0.500	20.728957	-88.202967
Temozón	12.70	3	0	3077	11.2	78.8	1.0	4.4	0.7	2.6	0.5	0.6	0.2	90.0	1.0	9.0	0.081	0.507	20.816472	-88.196227
Tizimin	51.80	1	0	2823	5.3	82.6	1.5	5.0	1.3	2.3	0.8	1.0	0.2	87.9	1.5	10.6	0.073	0.504	21.095833	-88.161348
Tizimin	51.80	3	0	2654	7.0	77.5	4.3	7.0	0.6	2.1	0.6	0.7	0.2	84.5	4.3	11.2	0.084	0.502	21.188363	-88.166699
T. Der. Dzonot Carretero	79.90	1	0	1159	6.5	76.3	4.2	5.2	1.4	2.2	1.3	1.8	1.1	82.8	4.2	13.0	0.079	0.501	21.380000	-88.142739
Río Lagartos	103.90																			

20 CARR: Mérida - Cancún (Cuota)

CLAVE: 00071

RUTA: MEX-180D

AÑO: 2013

LUGAR	ESTACION				CLASIFICACION VEHICULAR EN PORCIENTO										COORDENADAS					
	KM	TE	SC	TDPA	M	A	B	C2	C3	T3S2	T3S3	T3S2R4	OTROS	A	B	C	K'	D	LATITUD	LONGITUD
T. C. Mérida - Puerto Juárez	0.00																			
Caseta de Cobro Piste	51.00	1	1	1525	0.3	81.1	4.5	4.3	0.9	2.6	0.8	5.0	0.5	81.4	4.5	14.1	0.087	0.501	20.730481	-88.590842
Caseta de Cobro Piste	51.00	1	2	1530	0.2	78.7	5.0	5.2	0.9	2.8	1.0	5.7	0.5	78.9	5.0	16.1	0.165	0.501	20.729875	-88.586904
Caseta de Cobro X-Can	155.00	1	1	991	0.5	76.1	5.9	6.1	1.1	2.8	1.1	6.1	0.3	76.6	5.9	17.5	0.103	0.506	20.877178	-87.630557
Caseta de Cobro X-Can	155.00	1	2	969	0.5	74.9	6.4	6.5	1.0	3.0	1.2	6.2	0.3	75.4	6.4	18.2	0.094	0.506	20.877311	-87.630763

YUCATAN

20 CARR: Mérida - Cancún (Cuota)

CLAVE: 00071

RUTA: MEX-180D

AÑO: 2013

LUGAR	ESTACION				CLASIFICACION VEHICULAR EN PORCIENTO														COORDENADAS		
	KM	TE	SC	TDPA	M	A	B	C2	C3	T3S2	T3S3	T3S2R4	OTROS	A	B	C	K'	D	LATITUD	LONGITUD	
Lim. Edos. Term. Yuc. Ppia. Q. R.	160.00																				
T. C. Mérida - Puerto Juárez	292.00	1	1	1101	0.5	75.6	5.6	6.7	1.1	2.8	1.0	6.3	0.4	76.1	5.6	18.3	0.110	0.517	21.095333	-86.980500	
T. C. Mérida - Puerto Juárez	292.00	1	2	1030	0.4	72.2	6.7	7.3	1.6	3.0	1.5	6.9	0.4	72.6	6.7	20.7	0.091	0.517	21.095333	-86.980500	
T. C. Reforma Agraria - Puerto Juárez	308.10	1	0	7928	2.0	79.4	7.0	4.3	1.6	2.6	0.8	1.7	0.6	81.4	7.0	11.6	0.117	0.506	21.020389	-86.858861	

21 CARR: Acanceh - Estación Polabán

CLAVE: 31615

RUTA: YUC

AÑO: 2013

LUGAR	ESTACION				CLASIFICACION VEHICULAR EN PORCIENTO														COORDENADAS	
	KM	TE	SC	TDPA	M	A	B	C2	C3	T3S2	T3S3	T3S2R4	OTROS	A	B	C	K'	D	LATITUD	LONGITUD
Acanceh	0.00	3	0	1561	17.0	68.7	2.4	8.9	1.2	1.4	0.3	0.0	0.1	85.7	2.4	11.9	0.105	0.502	20.808833	-89.440000
Homún	20.00	3	0	628	30.6	57.3	1.0	9.6	0.4	1.0	0.1	0.0	0.0	87.9	1.0	11.1	0.104	0.516	20.735220	-89.268891
Estación Polabán	24.40	1	0	491	24.5	61.6	1.2	11.6	0.4	0.6	0.1	0.0	0.0	86.1	1.2	12.7	0.116	0.506	20.727061	-89.226293

22 CARR: Baca - Dzidzantún

CLAVE: 31591

RUTA: YUC

AÑO: 2013

LUGAR	ESTACION				CLASIFICACION VEHICULAR EN PORCIENTO														COORDENADAS	
	KM	TE	SC	TDPA	M	A	B	C2	C3	T3S2	T3S3	T3S2R4	OTROS	A	B	C	K'	D	LATITUD	LONGITUD
Baca	0.00	3	0	1802	44.9	42.7	4.0	4.6	1.7	1.7	0.3	0.1	0.0	87.6	4.0	8.4	0.088	0.508	21.122610	-89.393935
Dzemul	15.00	1	0	1105	45.3	42.8	3.1	4.8	1.3	2.1	0.2	0.2	0.2	88.1	3.1	8.8	0.100	0.505	21.206465	-89.320192
Dzemul	15.00	3	0	1420	43.6	47.2	2.3	4.0	0.6	2.1	0.1	0.1	0.0	90.8	2.3	6.9	0.096	0.527	21.208791	-89.296103
Pueblo Telchac	19.10	1	0	1761	45.2	41.8	5.4	3.5	0.7	1.5	0.6	0.3	1.0	87.0	5.4	7.6	0.079	0.502	21.205463	-89.280828
Sinanché	29.10	3	0	601	27.4	59.6	0.4	9.6	1.8	1.1	0.0	0.0	0.1	87.0	0.4	12.6	0.121	0.520	21.225709	-89.176283
Dzidzantún	43.00	1	0	865	16.2	74.4	0.3	5.5	2.0	1.2	0.3	0.1	0.0	90.6	0.3	9.1	0.104	0.507	21.245143	-89.053670

23 CARR: Citilcum - Tixkochoh

CLAVE: 31064

RUTA: YUC

AÑO: 2013

LUGAR	ESTACION				CLASIFICACION VEHICULAR EN PORCIENTO														COORDENADAS	
	KM	TE	SC	TDPA	M	A	B	C2	C3	T3S2	T3S3	T3S2R4	OTROS	A	B	C	K'	D	LATITUD	LONGITUD
Citilcum	0.00	3	0	935	32.0	56.4	0.7	8.8	1.0	0.9	0.2	0.0	0.0	88.4	0.7	10.9	0.118	0.522	20.957598	-89.115918
Tekanto	7.00	1	0	606	27.0	64.5	0.5	6.9	0.5	0.5	0.1	0.0	0.0	91.5	0.5	8.0	0.150	0.515	21.001346	-89.105108
Tixkochoh	10.00	1	0	470	32.3	59.7	0.3	6.0	1.1	0.3	0.3	0.0	0.0	92.0	0.3	7.7	0.109	0.516	21.013837	-89.088766

YUCATAN

24 CARR: Dzemul - Xtampú

CLAVE: 31608

RUTA: YUC

AÑO: 2013

LUGAR	ESTACION				CLASIFICACION VEHICULAR EN PORCIENTO													COORDENADAS		
	KM	TE	SC	TDPA	M	A	B	C2	C3	T3S2	T3S3	T3S2R4	OTROS	A	B	C	K'	D	LATITUD	LONGITUD
Dzemul	0.00	3	0	447	7.5	81.0	1.6	6.2	1.6	2.1	0.0	0.0	0.0	88.5	1.6	9.9	0.094	0.502	21.212886	-89.321275
Xtampú	10.00	1	0	410	17.0	70.1	3.6	6.1	1.4	1.6	0.1	0.1	0.0	87.1	3.6	9.3	0.110	0.503	21.331723	-89.348624

25 CARR: Dzidzantún - Santa Clara

CLAVE: 31592

RUTA: YUC

AÑO: 2013

LUGAR	ESTACION				CLASIFICACION VEHICULAR EN PORCIENTO													COORDENADAS		
	KM	TE	SC	TDPA	M	A	B	C2	C3	T3S2	T3S3	T3S2R4	OTROS	A	B	C	K'	D	LATITUD	LONGITUD
Dzidzantún	0.00	3	0	799	39.0	56.3	0.4	3.1	0.2	0.7	0.1	0.1	0.1	95.3	0.4	4.3	0.124	0.500	21.261792	-89.040632
Santa Clara	14.00	1	0	284	23.1	72.4	0.1	3.7	0.1	0.5	0.1	0.0	0.0	95.5	0.1	4.4	0.165	0.511	21.370568	-89.014481

26 CARR: Hoctún - Cenotillo

CLAVE: 31011

RUTA: YUC-011

AÑO: 2013

LUGAR	ESTACION				CLASIFICACION VEHICULAR EN PORCIENTO													COORDENADAS		
	KM	TE	SC	TDPA	M	A	B	C2	C3	T3S2	T3S3	T3S2R4	OTROS	A	B	C	K'	D	LATITUD	LONGITUD
Hoctún	0.00	3	0	2019	20.6	69.3	0.3	7.0	0.9	1.0	0.3	0.5	0.1	89.9	0.3	9.8	0.080	0.541	20.878247	-89.191159
Citilcum	13.20	3	0	1698	20.4	68.6	0.5	7.3	1.3	1.3	0.4	0.1	0.1	89.0	0.5	10.5	0.087	0.501	20.950667	-89.110000
Izamal	24.00	3	0	2033	24.8	64.4	0.9	6.7	1.2	1.4	0.4	0.1	0.1	89.2	0.9	9.9	0.087	0.503	20.933882	-89.001307
Tunkás	55.20	3	0	466	22.7	66.2	1.2	7.9	1.3	0.7	0.0	0.0	0.0	88.9	1.2	9.9	0.103	0.512	20.916459	-88.734867
Cenotillo	70.90	1	0	470	24.3	63.7	2.0	8.0	1.0	0.8	0.1	0.0	0.1	88.0	2.0	10.0	0.104	0.502	20.964036	-88.622158

27 CARR: Holcá - Sotuta

CLAVE: 31626

RUTA: YUC

AÑO: 2013

LUGAR	ESTACION				CLASIFICACION VEHICULAR EN PORCIENTO													COORDENADAS		
	KM	TE	SC	TDPA	M	A	B	C2	C3	T3S2	T3S3	T3S2R4	OTROS	A	B	C	K'	D	LATITUD	LONGITUD
T. C. Mérida - Puerto Juárez	0.00	3	0	610	7.6	77.1	1.7	10.1	1.7	1.2	0.1	0.2	0.3	84.7	1.7	13.6	0.116	0.509	20.750625	-88.930441
Tibolón	10.00	3	0	676	7.8	76.1	1.2	11.0	2.2	1.7	0.0	0.0	0.0	83.9	1.2	14.9	0.124	0.502	20.659501	-88.950137
Sotuta	20.00	1	0	651	7.5	76.4	1.5	10.7	2.3	1.2	0.3	0.1	0.0	83.9	1.5	14.6	0.094	0.523	20.607128	-89.002436

28 CARR: Hunucmá - Umán

CLAVE: 31610

RUTA: YUC

AÑO: 2013

LUGAR	ESTACION				CLASIFICACION VEHICULAR EN PORCIENTO													COORDENADAS		
	KM	TE	SC	TDPA	M	A	B	C2	C3	T3S2	T3S3	T3S2R4	OTROS	A	B	C	K'	D	LATITUD	LONGITUD
Hunucmá	0.00	3	0	873	26.3	65.9	1.2	4.2	1.0	1.0	0.1	0.0	0.3	92.2	1.2	6.6	0.118	0.518	21.001850	-89.862256
X. C. Mérida - Tetz	4.87	3	0	804	30.8	54.8	1.1	11.0	0.6	1.3	0.4	0.0	0.0	85.6	1.1	13.3	0.108	0.501	20.973845	-89.851488
Hacienda Dzibikak	16.16	1	0	935	28.5	60.5	0.7	6.9	1.0	1.9	0.5	0.0	0.0	89.0	0.7	10.3	0.105	0.530	20.905700	-89.798250

YUCATAN

28 CARR: Hunucmá - Umán

CLAVE: 31610

ruta: YUC

AÑO: 2013

LUGAR	ESTACION				CLASIFICACION VEHICULAR EN PORCIENTO													COORDENADAS		
	KM	TE	SC	TDPA	M	A	B	C2	C3	T3S2	T3S3	T3S2R4	OTROS	A	B	C	K'	D	LATITUD	LONGITUD
Hacienda Dzibikak	16.16	3	0	1107	13.5	78.7	0.2	3.1	1.6	1.2	0.3	0.2	1.2	92.2	0.2	7.6	0.105	0.508	20.902155	-89.786768
Umán	22.00	1	0	2215	34.4	54.4	1.0	3.9	1.0	3.1	1.1	0.4	0.7	88.8	1.0	10.2	0.137	0.504	20.894919	-89.764934

29 CARR: Izamal - Dzilam González

CLAVE: 31605

ruta: YUC

AÑO: 2013

LUGAR	ESTACION				CLASIFICACION VEHICULAR EN PORCIENTO													COORDENADAS		
	KM	TE	SC	TDPA	M	A	B	C2	C3	T3S2	T3S3	T3S2R4	OTROS	A	B	C	K'	D	LATITUD	LONGITUD
Izamal	0.00	3	0	1317	31.1	60.9	1.0	5.1	0.3	1.5	0.0	0.0	0.1	92.0	1.0	7.0	0.081	0.514	20.943981	-89.007303
Temax	30.00	1	0	721	21.5	68.7	1.4	5.7	1.1	1.4	0.2	0.0	0.0	90.2	1.4	8.4	0.104	0.507	21.132973	-88.938824
Dzilam González	43.00	1	0	702	32.1	61.6	0.4	4.2	0.5	1.0	0.1	0.0	0.1	93.7	0.4	5.9	0.088	0.505	21.270323	-88.931521

30 CARR: Kantunil - Izamal

CLAVE: 31012

ruta: YUC

AÑO: 2013

LUGAR	ESTACION				CLASIFICACION VEHICULAR EN PORCIENTO													COORDENADAS		
	KM	TE	SC	TDPA	M	A	B	C2	C3	T3S2	T3S3	T3S2R4	OTROS	A	B	C	K'	D	LATITUD	LONGITUD
Kantunil	0.00	3	0	824	11.4	83.5	1.2	2.1	0.5	0.8	0.4	0.0	0.1	94.9	1.2	3.9	0.114	0.506	20.807906	-89.028610
Izamal	17.80	1	0	1699	19.9	66.9	1.5	9.3	0.3	1.3	0.2	0.1	0.5	86.8	1.5	11.7	0.101	0.510	20.920407	-89.013204

31 CARR: Kinchil - Umán

CLAVE: 31009

ruta: YUC

AÑO: 2013

LUGAR	ESTACION				CLASIFICACION VEHICULAR EN PORCIENTO													COORDENADAS		
	KM	TE	SC	TDPA	M	A	B	C2	C3	T3S2	T3S3	T3S2R4	OTROS	A	B	C	K'	D	LATITUD	LONGITUD
Kinchil	0.00	3	0	1528	16.5	65.0	5.4	5.7	4.1	2.1	0.6	0.3	0.3	81.5	5.4	13.1	0.080	0.516	20.911158	-89.937410
Umán	26.00																			

32 CARR: Libramiento Norte de Motul

CLAVE: 31610

ruta: YUC

AÑO: 2013

LUGAR	ESTACION				CLASIFICACION VEHICULAR EN PORCIENTO													COORDENADAS		
	KM	TE	SC	TDPA	M	A	B	C2	C3	T3S2	T3S3	T3S2R4	OTROS	A	B	C	K'	D	LATITUD	LONGITUD
T. C. Mérida - Dzilam de Bravo Poniente	0.00	3	0	5824	8.8	77.6	0.5	6.4	1.5	2.6	1.2	0.8	0.6	86.4	0.5	13.1	0.102	0.521	21.101807	-89.301148
X. C. Motul - Puerto Telchac	3.16	1	0	5405	5.0	80.3	0.8	7.3	1.4	3.3	0.7	0.8	0.4	85.3	0.8	13.9	0.086	0.510	21.114437	-89.284609
X. C. Motul - Puerto Telchac	3.16	3	0	4646	6.0	79.3	0.5	7.5	1.7	3.3	0.5	0.9	0.3	85.3	0.5	14.2	0.084	0.504	21.114464	-89.278932
X. C. Libramiento Suma de Hidalgo	3.70	3	0	1081	26.9	62.1	2.3	6.9	0.2	1.0	0.3	0.3	0.0	89.0	2.3	8.7	0.131	0.516	21.112547	-89.274284
T. C. Mérida - Dzilam de Bravo Oriente	6.53	1	0	635	28.9	62.8	0.5	7.0	0.4	0.4	0.0	0.0	0.0	91.7	0.5	7.8	0.131	0.510	21.097251	-89.264435

YUCATAN

33 CARR: Mérida - Acanceh

CLAVE: 31023

RUTA: YUC

AÑO: 2013

LUGAR	ESTACION				CLASIFICACION VEHICULAR EN PORCIENTO													COORDENADAS		
	KM	TE	SC	TDPA	M	A	B	C2	C3	T3S2	T3S3	T3S2R4	OTROS	A	B	C	K'	D	LATITUD	LONGITUD
Mérida	0.00	3	0	7370	17.1	65.6	1.5	6.3	2.5	4.6	1.2	0.4	0.8	82.7	1.5	15.8	0.074	0.505	20.935057	-89.579571
T. Der. Uxec Tamán	11.00	1	0	2702	7.2	78.8	1.2	10.3	0.9	1.0	0.4	0.1	0.1	86.0	1.2	12.8	0.090	0.517	20.874210	-89.528824
T. Der. Uxec Tamán	11.00	3	0	1822	7.7	82.1	1.4	7.4	0.8	0.2	0.1	0.1	0.2	89.8	1.4	8.8	0.093	0.500	20.862833	-89.532167
Timucuy	20.00	3	0	882	20.8	69.1	0.4	6.7	1.4	1.3	0.2	0.0	0.1	89.9	0.4	9.7	0.071	0.513	20.812167	-89.506167
Acanceh	26.00	1	0	914	24.0	64.8	0.7	7.3	0.8	1.8	0.5	0.0	0.1	88.8	0.7	10.5	0.073	0.516	20.812500	-89.473667

34 CARR: Mérida - Oxkutzcab

CLAVE: 31018

RUTA: YUC-018

AÑO: 2013

LUGAR	ESTACION				CLASIFICACION VEHICULAR EN PORCIENTO													COORDENADAS		
	KM	TE	SC	TDPA	M	A	B	C2	C3	T3S2	T3S3	T3S2R4	OTROS	A	B	C	K'	D	LATITUD	LONGITUD
Mérida	0.00	3	1	8533	11.7	75.6	0.9	8.8	0.2	1.0	1.4	0.1	0.3	87.3	0.9	11.8	0.072	0.507	20.944860	-89.582223
Mérida	0.00	3	2	8288	10.8	76.0	1.0	9.1	0.2	1.0	1.5	0.1	0.3	86.8	1.0	12.2	0.066	0.507	20.944846	-89.582199
Kanasín	5.97	1	1	8657	22.9	64.6	1.0	7.7	0.3	1.9	0.8	0.2	0.6	87.5	1.0	11.5	0.067	0.503	20.940997	-89.571490
Kanasín	5.97	1	2	8749	18.6	68.1	1.0	8.3	0.3	2.1	0.8	0.2	0.6	86.7	1.0	12.3	0.074	0.503	20.941000	-89.571498
Acanceh	20.39	1	0	6345	4.2	76.0	0.8	10.4	2.6	3.4	0.9	0.9	0.8	80.2	0.8	19.0	0.107	0.512	20.823500	-89.466500
Acanceh	20.39	3	0	5592	5.7	76.2	1.3	9.6	2.2	2.8	0.9	1.0	0.3	81.9	1.3	16.8	0.078	0.506	20.792167	-89.459333
Tecoh	29.30	1	0	5554	5.6	77.7	1.2	8.6	2.3	2.5	0.8	1.0	0.3	83.3	1.2	15.5	0.089	0.505	20.764167	-89.468333
Tekit	61.70	1	0	4312	1.9	77.3	2.4	6.9	3.4	3.1	2.0	2.3	0.7	79.2	2.4	18.4	0.071	0.503	20.544333	-89.338333
Maní	98.20	1	0	1495	6.3	79.7	0.9	6.7	2.0	2.1	1.1	0.9	0.3	86.0	0.9	13.1	0.086	0.504	20.399667	-89.360333
Maní	98.20	3	0	1425	27.6	63.4	0.2	7.5	0.3	0.9	0.1	0.0	0.0	91.0	0.2	8.8	0.087	0.505	20.371833	-89.398667
Oxkutzcab	109.30	1	0	1608	18.1	71.4	0.4	7.1	0.8	1.6	0.3	0.0	0.3	89.5	0.4	10.1	0.085	0.517	20.325000	-89.414667

35 CARR: Mérida - Tetiz

CLAVE: 31610

RUTA: YUC

AÑO: 2013

LUGAR	ESTACION				CLASIFICACION VEHICULAR EN PORCIENTO													COORDENADAS		
	KM	TE	SC	TDPA	M	A	B	C2	C3	T3S2	T3S3	T3S2R4	OTROS	A	B	C	K'	D	LATITUD	LONGITUD
Anillo Periferico Lic. Manuel Berzunza	0.00	3	0	7946	6.7	83.6	2.0	3.5	1.0	2.5	0.3	0.1	0.3	90.3	2.0	7.7	0.083	0.511	20.983557	-89.700076
X. C. Hunucmá - Umán	17.98	1	0	2692	7.1	83.3	1.6	3.7	1.3	2.2	0.3	0.3	0.2	90.4	1.6	8.0	0.091	0.519	20.981603	-89.844663
X. C. Hunucmá - Umán	17.98	3	0	2726	6.0	81.2	2.7	6.1	1.3	2.0	0.3	0.1	0.3	87.2	2.7	10.1	0.084	0.540	20.979094	-89.862683
X. C. Mérida - Celestún	24.40	1	0	2728	5.5	82.0	2.7	5.8	1.4	2.0	0.3	0.2	0.1	87.5	2.7	9.8	0.084	0.537	20.980352	-89.909175

YUCATAN

36 CARR: Mérida - Timucuy

CLAVE: 31024

RUTA: YUC

AÑO: 2013

LUGAR	ESTACION				CLASIFICACION VEHICULAR EN PORCIENTO													COORDENADAS		
	KM	TE	SC	TDPA	M	A	B	C2	C3	T3S2	T3S3	T3S2R4	OTROS	A	B	C	K'	D	LATITUD	LONGITUD
Mérida	0.00	3	0	4247	13.2	71.8	1.2	10.0	0.7	2.0	0.6	0.1	0.4	85.0	1.2	13.8	0.074	0.504	20.900420	-89.599818
Tekik de Regil	15.10	1	0	1273	5.5	78.1	2.4	10.1	1.3	1.8	0.4	0.2	0.2	83.6	2.4	14.0	0.088	0.534	20.821500	-89.559667
Tekik de Regil	15.10	3	0	992	10.9	71.1	1.2	15.1	0.8	0.7	0.1	0.0	0.1	82.0	1.2	16.8	0.083	0.508	20.815667	-89.553833
Timucuy	18.65	1	0	1096	11.1	75.3	1.3	10.2	0.7	0.8	0.2	0.0	0.4	86.4	1.3	12.3	0.078	0.500	20.812584	-89.525476

37 CARR: Motul - Puerto Telchac

CLAVE: 31006

RUTA: YUC-172

AÑO: 2013

LUGAR	ESTACION				CLASIFICACION VEHICULAR EN PORCIENTO													COORDENADAS		
	KM	TE	SC	TDPA	M	A	B	C2	C3	T3S2	T3S3	T3S2R4	OTROS	A	B	C	K'	D	LATITUD	LONGITUD
Motul	0.00	3	0	3117	15.8	68.3	7.3	5.0	1.5	1.5	0.4	0.1	0.1	84.1	7.3	8.6	0.113	0.511	21.116938	-89.281095
Pueblo Telchac	12.00	3	0	1460	20.2	69.8	3.2	4.4	0.7	1.2	0.3	0.1	0.1	90.0	3.2	6.8	0.134	0.510	21.216057	-89.271345
Puerto Telchac	28.00																			

38 CARR: Muna - Maxcanú

CLAVE: 31053

RUTA: YUC

AÑO: 2013

LUGAR	ESTACION				CLASIFICACION VEHICULAR EN PORCIENTO													COORDENADAS		
	KM	TE	SC	TDPA	M	A	B	C2	C3	T3S2	T3S3	T3S2R4	OTROS	A	B	C	K'	D	LATITUD	LONGITUD
Muna	0.00	3	0	972	15.8	72.8	1.5	4.6	1.6	2.6	0.6	0.3	0.2	88.6	1.5	9.9	0.113	0.511	20.490333	-89.734667
Opichén	17.00	3	0	970	16.0	68.0	1.6	10.2	1.3	1.7	0.6	0.5	0.1	84.0	1.6	14.4	0.091	0.514	20.554667	-89.869167
T. C. Campeche - Mérida	31.00	1	0	943	12.0	72.6	2.7	6.8	2.7	2.0	0.7	0.1	0.4	84.6	2.7	12.7	0.105	0.507	20.583000	-89.969833

39 CARR: Oxkutzcab - Xul

CLAVE: 31051

RUTA: YUC-031

AÑO: 2013

LUGAR	ESTACION				CLASIFICACION VEHICULAR EN PORCIENTO													COORDENADAS		
	KM	TE	SC	TDPA	M	A	B	C2	C3	T3S2	T3S3	T3S2R4	OTROS	A	B	C	K'	D	LATITUD	LONGITUD
Oxkutzcab	0.00	3	0	1891	20.0	67.1	0.2	10.5	0.1	1.4	0.3	0.1	0.3	87.1	0.2	12.7	0.100	0.500	20.286833	-89.424500
Emiliano Zapata	10.00	3	0	932	39.7	52.4	0.2	5.3	0.7	1.0	0.5	0.0	0.2	92.1	0.2	7.7	0.118	0.509	20.220333	-89.464000
Xul	25.00	1	0	541	28.2	64.1	0.4	5.3	1.4	0.5	0.1	0.0	0.0	92.3	0.4	7.3	0.105	0.508	20.110667	-89.456667

40 CARR: Piste - Dzitás

CLAVE: 31013

RUTA: YUC-013

AÑO: 2013

LUGAR	ESTACION				CLASIFICACION VEHICULAR EN PORCIENTO													COORDENADAS		
	KM	TE	SC	TDPA	M	A	B	C2	C3	T3S2	T3S3	T3S2R4	OTROS	A	B	C	K'	D	LATITUD	LONGITUD
Piste	0.00	3	0	1401	19.7	67.3	3.4	7.3	0.3	1.5	0.3	0.2	0.0	87.0	3.4	9.6	0.087	0.508	20.709503	-88.585850
Dzitás	18.00	1	0	753	22.3	69.6	0.4	5.5	1.2	0.9	0.1	0.0	0.0	91.9	0.4	7.7	0.109	0.508	20.830894	-88.539744

YUCATAN

41 CARR: Progreso - Telchac Puerto

CLAVE: 31616

RUTA: YUC-027

AÑO: 2013

LUGAR	ESTACION				CLASIFICACION VEHICULAR EN PORCIENTO										COORDENADAS					
	KM	TE	SC	TDPA	M	A	B	C2	C3	T3S2	T3S3	T3S2R4	OTROS	A	B	C	K'	D	LATITUD	LONGITUD
Progreso	0.00	3	1	2187	7.7	82.6	1.2	1.2	2.3	2.1	1.3	0.7	0.9	90.3	1.2	8.5	0.093	0.502	21.276160	-89.657884
Progreso	0.00	3	2	2170	4.6	84.3	1.4	1.4	2.5	2.3	1.5	0.9	1.1	88.9	1.4	9.7	0.076	0.502	21.276144	-89.657893
Chicxulub Puerto	6.00	1	1	1028	3.6	85.5	2.2	2.4	2.8	1.9	0.7	0.2	0.7	89.1	2.2	8.7	0.099	0.508	21.288386	-89.604770
Chicxulub Puerto	6.00	1	2	1059	2.8	86.7	2.4	2.5	3.1	0.9	0.7	0.2	0.7	89.5	2.4	8.1	0.099	0.508	21.288381	-89.604772
Chicxulub Puerto	6.00	3	0	2620	5.3	81.7	3.2	4.4	2.2	1.7	0.7	0.3	0.5	87.0	3.2	9.8	0.083	0.512	21.296262	-89.578841
Xtampú	20.00	1	0	538	4.8	85.5	3.3	4.3	0.7	1.2	0.1	0.0	0.1	90.3	3.3	6.4	0.178	0.546	21.332698	-89.352552
Xtampú	20.00	3	0	634	5.7	80.4	4.2	3.5	3.5	1.7	1.0	0.0	0.0	86.1	4.2	9.7	0.139	0.502	21.333729	-89.344770
Telchac Puerto	33.00	1	0	874	4.7	82.2	4.0	4.2	3.0	1.7	0.1	0.0	0.1	86.9	4.0	9.1	0.126	0.509	21.340294	-89.289398

42 CARR: Ramal a Chankom

CLAVE: 31049

RUTA: YUC

AÑO: 2013

LUGAR	ESTACION				CLASIFICACION VEHICULAR EN PORCIENTO										COORDENADAS					
	KM	TE	SC	TDPA	M	A	B	C2	C3	T3S2	T3S3	T3S2R4	OTROS	A	B	C	K'	D	LATITUD	LONGITUD
T. C. Mérida - Puerto Juárez	0.00	3	0	353	7.3	84.1	0.7	6.9	0.4	0.4	0.2	0.0	0.0	91.4	0.7	7.9	0.102	0.524	20.640528	-88.489092
Chankom	9.00	1	0	304	7.2	86.7	0.5	4.6	0.4	0.6	0.0	0.0	0.0	93.9	0.5	5.6	0.079	0.517	20.582317	-88.508014

43 CARR: Ramal a Dzonot Carretero

CLAVE: 31614

RUTA: YUC

AÑO: 2013

LUGAR	ESTACION				CLASIFICACION VEHICULAR EN PORCIENTO										COORDENADAS					
	KM	TE	SC	TDPA	M	A	B	C2	C3	T3S2	T3S3	T3S2R4	OTROS	A	B	C	K'	D	LATITUD	LONGITUD
T. C. Valladolid - Río Lagartos	0.00	3	0	413	38.9	51.3	2.3	5.7	0.8	0.8	0.2	0.0	0.0	90.2	2.3	7.5	0.102	0.503	21.380374	-88.142200
Dzonot Carretero	35.00																			

44 CARR: Ramal a San Felipe

CLAVE: 31628

RUTA: YUC

AÑO: 2013

LUGAR	ESTACION				CLASIFICACION VEHICULAR EN PORCIENTO										COORDENADAS					
	KM	TE	SC	TDPA	M	A	B	C2	C3	T3S2	T3S3	T3S2R4	OTROS	A	B	C	K'	D	LATITUD	LONGITUD
T. C. Valladolid - Río Lagartos	0.00	3	0	510	17.2	58.6	5.3	7.1	10.3	0.9	0.3	0.3	0.0	75.8	5.3	18.9	0.096	0.508	21.572310	-88.162516
San Felipe	7.20	1	0	460	18.8	57.1	5.1	7.0	11.2	0.7	0.0	0.0	0.1	75.9	5.1	19.0	0.115	0.534	21.553381	-88.233643

45 CARR: Ramal a Tedzidz

CLAVE: 31600

RUTA: YUC

AÑO: 2013

LUGAR	ESTACION				CLASIFICACION VEHICULAR EN PORCIENTO										COORDENADAS					
	KM	TE	SC	TDPA	M	A	B	C2	C3	T3S2	T3S3	T3S2R4	OTROS	A	B	C	K'	D	LATITUD	LONGITUD
T. C. Mérida - Celestún	0.00																			

YUCATAN

45 CARR: Ramal a Tedzidz

CLAVE: 31600

RUTA: YUC

AÑO: 2013

LUGAR	ESTACION				CLASIFICACION VEHICULAR EN PORCIENTO														COORDENADAS	
	KM	TE	SC	TDPA	M	A	B	C2	C3	T3S2	T3S3	T3S2R4	OTROS	A	B	C	K'	D	LATITUD	LONGITUD
Tedzidz	6.00	1	0	156	22.3	72.3	1.5	2.2	1.5	0.2	0.0	0.0	0.0	94.6	1.5	3.9	0.154	0.516	20.843158	-89.975007

46 CARR: Ramal a Yaxcabá

CLAVE: 31111

RUTA: YUC-289

AÑO: 2013

LUGAR	ESTACION				CLASIFICACION VEHICULAR EN PORCIENTO														COORDENADAS	
	KM	TE	SC	TDPA	M	A	B	C2	C3	T3S2	T3S3	T3S2R4	OTROS	A	B	C	K'	D	LATITUD	LONGITUD
T. C. Mérida - Puerto Juárez	0.00	3	0	469	17.5	72.2	0.7	7.4	1.7	0.5	0.0	0.0	0.0	89.7	0.7	9.6	0.113	0.503	20.700896	-88.810839
Yaxcabá	18.00	1	0	605	17.4	74.9	0.9	5.3	1.1	0.3	0.1	0.0	0.0	92.3	0.9	6.8	0.106	0.514	20.560174	-88.825352

47 CARR: Sinanché - Xitibcanul

CLAVE: 31619

RUTA: YUC

AÑO: 2013

LUGAR	ESTACION				CLASIFICACION VEHICULAR EN PORCIENTO														COORDENADAS	
	KM	TE	SC	TDPA	M	A	B	C2	C3	T3S2	T3S3	T3S2R4	OTROS	A	B	C	K'	D	LATITUD	LONGITUD
Sinanché	0.00	3	0	545	36.3	53.1	0.3	5.8	3.6	0.7	0.1	0.0	0.1	89.4	0.3	10.3	0.106	0.515	21.233220	-89.184471
Xitibcanul	7.00	1	0	380	16.1	75.8	0.5	5.8	1.3	0.2	0.1	0.1	0.1	91.9	0.5	7.6	0.137	0.511	21.349588	-89.172233

48 CARR: Sucilá - Calotmul

CLAVE: 31617

RUTA: YUC

AÑO: 2013

LUGAR	ESTACION				CLASIFICACION VEHICULAR EN PORCIENTO														COORDENADAS	
	KM	TE	SC	TDPA	M	A	B	C2	C3	T3S2	T3S3	T3S2R4	OTROS	A	B	C	K'	D	LATITUD	LONGITUD
Sucilá	0.00																			
X. C. Cansahcab - Tizimin	2.00	3	0	851	16.5	71.3	3.6	6.8	0.7	1.0	0.1	0.0	0.0	87.8	3.6	8.6	0.089	0.511	21.147865	-88.316554
Calotmul	30.20	1	0	769	16.0	71.0	3.7	8.5	0.4	0.3	0.1	0.0	0.0	87.0	3.7	9.3	0.086	0.513	21.017751	-88.186175

49 CARR: Suma - Izamal

CLAVE: 31081

RUTA: YUC-081

AÑO: 2013

LUGAR	ESTACION				CLASIFICACION VEHICULAR EN PORCIENTO														COORDENADAS	
	KM	TE	SC	TDPA	M	A	B	C2	C3	T3S2	T3S3	T3S2R4	OTROS	A	B	C	K'	D	LATITUD	LONGITUD
Suma	0.00	3	0	648	21.6	66.5	1.0	8.8	1.2	0.6	0.2	0.0	0.1	88.1	1.0	10.9	0.105	0.514	21.083398	-89.140175
Izamal	22.00	1	0	732	22.1	63.9	0.5	10.8	0.1	2.2	0.0	0.4	0.0	86.0	0.5	13.5	0.093	0.505	20.948545	-89.020349

YUCATAN

50 CARR: Telchac Puerto - Dzilam de Bravo

CLAVE: 31042

RUTA: YUC

AÑO: 2013

LUGAR	ESTACION				CLASIFICACION VEHICULAR EN PORCIENTO										COORDENADAS					
	KM	TE	SC	TDPA	M	A	B	C2	C3	T3S2	T3S3	T3S2R4	OTROS	A	B	C	K'	D	LATITUD	LONGITUD
Telchac Puerto	0.00	3	0	781	13.5	79.4	1.3	4.0	0.3	0.7	0.5	0.1	0.2	92.9	1.3	5.8	0.105	0.510	21.343025	-89.248106
T. Der. Sinanché	8.00	1	0	547	14.3	73.8	2.3	6.7	1.1	1.4	0.3	0.0	0.1	88.1	2.3	9.6	0.128	0.514	21.352611	-89.179211
T. Der. Sinanché	8.00	3	0	498	17.8	75.8	2.2	1.3	0.7	0.7	0.0	0.0	1.5	93.6	2.2	4.2	0.169	0.516	21.352061	-89.163651
Chabihau	15.00	1	0	327	16.0	77.2	0.2	5.0	0.8	0.5	0.2	0.0	0.1	93.2	0.2	6.6	0.165	0.516	21.355292	-89.128625
Chabihau	15.00	3	0	258	11.9	79.5	1.6	4.9	1.2	0.8	0.1	0.0	0.0	91.4	1.6	7.0	0.163	0.516	21.358355	-89.104514
Santa Clara	26.00	1	0	224	12.9	80.1	1.1	4.4	0.7	0.8	0.0	0.0	0.0	93.0	1.1	5.9	0.170	0.501	21.372179	-89.021683
Santa Clara	26.00	3	0	214	16.0	76.8	1.0	5.1	0.8	0.3	0.0	0.0	0.0	92.8	1.0	6.2	0.187	0.505	21.374533	-89.003177
Dzilam de Bravo	39.00	1	0	266	12.6	81.6	0.3	4.9	0.0	0.6	0.0	0.0	0.0	94.2	0.3	5.5	0.117	0.531	21.387965	-88.910443

51 CARR: Thul - Becanchén

CLAVE: 31104

RUTA: YUC-281

AÑO: 2013

LUGAR	ESTACION				CLASIFICACION VEHICULAR EN PORCIENTO										COORDENADAS					
	KM	TE	SC	TDPA	M	A	B	C2	C3	T3S2	T3S3	T3S2R4	OTROS	A	B	C	K'	D	LATITUD	LONGITUD
T. C. Muna - Felipe Carrillo Puerto	0.00	3	0	161	23.6	60.1	6.8	6.8	1.4	1.2	0.1	0.0	0.0	83.7	6.8	9.5	0.143	0.505	20.087241	-89.099294
Becanchén	32.00																			

52 CARR: Ticul - Chapab

CLAVE: 31623

RUTA: YUC

AÑO: 2013

LUGAR	ESTACION				CLASIFICACION VEHICULAR EN PORCIENTO										COORDENADAS					
	KM	TE	SC	TDPA	M	A	B	C2	C3	T3S2	T3S3	T3S2R4	OTROS	A	B	C	K'	D	LATITUD	LONGITUD
Ticul	0.00	3	0	1414	28.4	63.1	1.5	5.3	0.5	0.9	0.2	0.0	0.1	91.5	1.5	7.0	0.091	0.504	20.409667	-89.524833
Chapab	8.00	1	0	1374	28.5	65.0	0.9	3.8	0.4	1.0	0.2	0.0	0.2	93.5	0.9	5.6	0.099	0.503	20.454667	-89.461833

53 CARR: Ticul - Dzan

CLAVE: 31621

RUTA: YUC

AÑO: 2013

LUGAR	ESTACION				CLASIFICACION VEHICULAR EN PORCIENTO										COORDENADAS					
	KM	TE	SC	TDPA	M	A	B	C2	C3	T3S2	T3S3	T3S2R4	OTROS	A	B	C	K'	D	LATITUD	LONGITUD
Ticul	0.00																			
T. Izq. Libramiento de Ticul	2.50	3	0	2669	37.7	56.8	0.2	2.9	0.3	1.7	0.2	0.0	0.2	94.5	0.2	5.3	0.073	0.537	20.395000	-89.514333
Dzan	7.00	1	0	2599	34.2	58.7	0.7	3.6	0.1	2.4	0.1	0.0	0.2	92.9	0.7	6.4	0.095	0.501	20.390333	-89.480000

YUCATAN

54 CARR: Tixkokob - Baca

CLAVE: 31010

ruta: YUC

AÑO: 2013

LUGAR	ESTACION				CLASIFICACION VEHICULAR EN PORCIENTO													COORDENADAS		
	KM	TE	SC	TDPA	M	A	B	C2	C3	T3S2	T3S3	T3S2R4	OTROS	A	B	C	K'	D	LATITUD	LONGITUD
Tixkokob	0.00	3	0	2964	50.8	40.0	2.2	3.7	1.3	0.8	0.5	0.3	0.4	90.8	2.2	7.0	0.125	0.517	21.007360	-89.416859
Baca	15.00	1	0	2052	57.4	32.9	2.1	4.1	1.8	1.3	0.2	0.1	0.1	90.3	2.1	7.6	0.095	0.503	21.097682	-89.398031

55 CARR: Tixkokob - Sotuta

CLAVE: 31106

ruta: YUC

AÑO: 2013

LUGAR	ESTACION				CLASIFICACION VEHICULAR EN PORCIENTO													COORDENADAS		
	KM	TE	SC	TDPA	M	A	B	C2	C3	T3S2	T3S3	T3S2R4	OTROS	A	B	C	K'	D	LATITUD	LONGITUD
Tixkokob	0.00	3	0	1982	19.2	67.8	1.2	9.0	1.0	1.4	0.2	0.1	0.1	87.0	1.2	11.8	0.130	0.502	20.995783	-89.378385
Tahmek	24.00	3	0	1098	20.0	68.4	1.5	8.3	0.6	1.1	0.1	0.0	0.0	88.4	1.5	10.1	0.079	0.515	20.862622	-89.255453
Hocabá	31.00	3	0	379	19.6	66.2	2.1	10.2	1.9	0.1	0.0	0.0	0.0	85.8	2.1	12.1	0.119	0.501	20.807885	-89.238669
Huhí	43.00	1	0	462	20.4	65.0	2.0	11.3	0.7	0.6	0.0	0.0	0.0	85.4	2.0	12.6	0.145	0.515	20.724369	-89.173044
Sotuta	65.00	1	0	394	20.8	66.0	1.8	9.8	1.1	0.4	0.1	0.0	0.0	86.8	1.8	11.4	0.096	0.530	20.603088	-89.020921

56 CARR: Tizimín - Yucatán

CLAVE: 31588

ruta: YUC

AÑO: 2013

LUGAR	ESTACION				CLASIFICACION VEHICULAR EN PORCIENTO													COORDENADAS		
	KM	TE	SC	TDPA	M	A	B	C2	C3	T3S2	T3S3	T3S2R4	OTROS	A	B	C	K'	D	LATITUD	LONGITUD
Tizimín	0.00	3	0	4368	11.8	74.0	3.4	7.4	1.4	1.3	0.3	0.1	0.3	85.8	3.4	10.8	0.075	0.501	21.149246	-88.113100
T. Der. Buenaventura	30.00	3	0	1908	8.0	77.0	4.2	7.2	1.7	1.3	0.2	0.3	0.1	85.0	4.2	10.8	0.091	0.504	21.179664	-87.923639
Yucatán	46.50	1	0	1958	10.0	75.8	3.6	7.3	1.6	1.4	0.1	0.1	0.1	85.8	3.6	10.6	0.085	0.518	21.203096	-87.730251

57 CARR: Yaxché - Sierra Papacal

CLAVE: 31620

ruta: YUC

AÑO: 2013

LUGAR	ESTACION				CLASIFICACION VEHICULAR EN PORCIENTO													COORDENADAS		
	KM	TE	SC	TDPA	M	A	B	C2	C3	T3S2	T3S3	T3S2R4	OTROS	A	B	C	K'	D	LATITUD	LONGITUD
T. C. Mérida - Progreso	0.00	3	0	3377	15.5	71.4	2.0	7.2	1.4	2.0	0.3	0.0	0.2	86.9	2.0	11.1	0.098	0.500	21.105395	-89.641206
Sierra Papacal	12.00	1	0	825	15.3	68.6	2.8	8.0	3.8	1.1	0.4	0.0	0.0	83.9	2.8	13.3	0.133	0.517	21.122347	-89.724303

58 CARR: Yobain - Chabihau

CLAVE: 31610

ruta: YUC

AÑO: 2013

LUGAR	ESTACION				CLASIFICACION VEHICULAR EN PORCIENTO													COORDENADAS		
	KM	TE	SC	TDPA	M	A	B	C2	C3	T3S2	T3S3	T3S2R4	OTROS	A	B	C	K'	D	LATITUD	LONGITUD
T. C. Baca - Dzidzantún	0.00	3	0	548	43.0	52.2	0.3	3.7	0.3	0.4	0.1	0.0	0.0	95.2	0.3	4.5	0.115	0.511	21.240962	-89.116550
Chabihau	12.00	1	0	155	30.0	62.1	1.1	6.6	0.0	0.2	0.0	0.0	0.0	92.1	1.1	6.8	0.155	0.501	21.355091	-89.117236

YUCATAN

59 CARR: Progreso - Celestún

CLAVE: 31040

RUTA: MEX-YUC

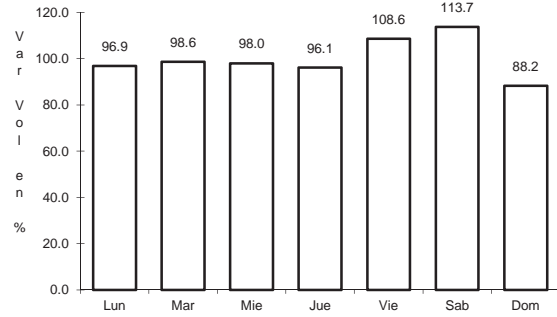
AÑO: 2013

LUGAR	ESTACION				CLASIFICACION VEHICULAR EN PORCIENTO													COORDENADAS		
	KM	TE	SC	TDPA	M	A	B	C2	C3	T3S2	T3S3	T3S2R4	OTROS	A	B	C	K'	D	LATITUD	LONGITUD
T. C. Mérida - Progreso	0.00	3	1	2453	13.6	79.4	3.1	2.2	0.3	1.0	0.2	0.1	0.1	93.0	3.1	3.9	0.098	0.502	21.274366	-89.692647
T. C. Mérida - Progreso	0.00	3	2	2429	14.8	78.7	2.1	2.7	0.3	1.0	0.2	0.1	0.1	93.5	2.1	4.4	0.117	0.502	21.274333	-89.692634
Yucalpetén	6.00	3	0	2652	6.2	79.1	3.3	6.0	1.0	2.1	0.7	0.5	1.1	85.3	3.3	11.4	0.087	0.507	21.275612	-89.719912
Celestún	80.00																			

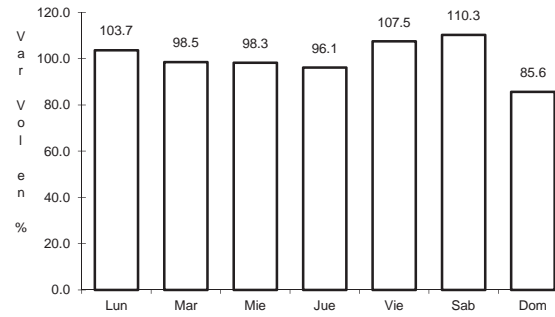
1 CARR: Campeche - Mérida

CLAVE: 00066

RUTA: MEX-180



Km: 0.00 Tipo: 3 Sent: 1

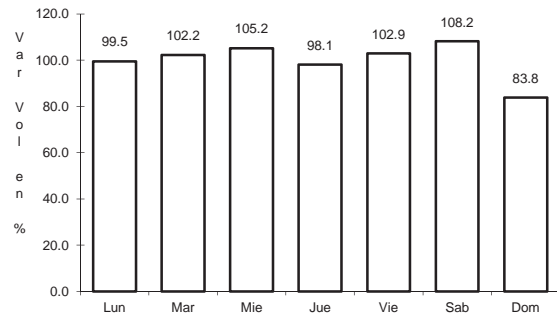


Km: 0.00 Tipo: 3 Sent: 2

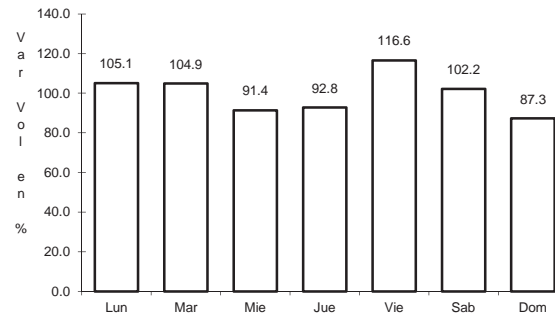
2 CARR: Campeche - Umán

CLAVE: 00164

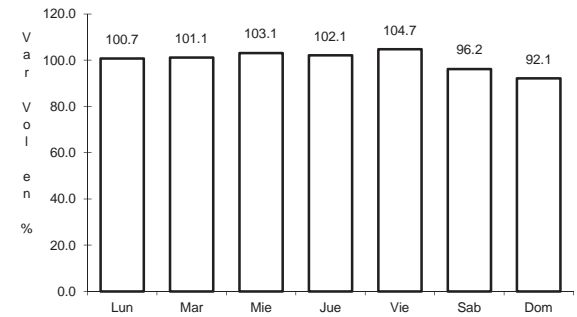
RUTA: MEX-261



Km: 7.00 Tipo: 1 Sent: 0



Km: 117.88 Tipo: 3 Sent: 0

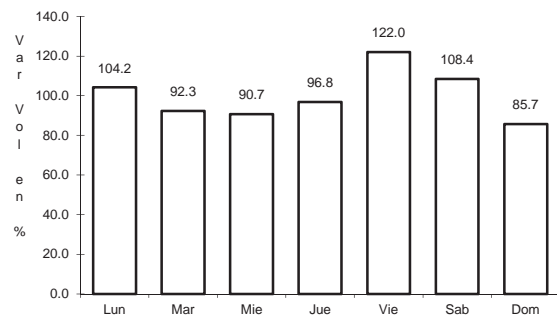


Km: 230.83 Tipo: 1 Sent: 0

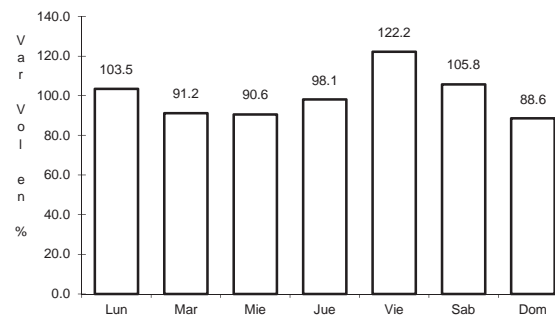
3 CARR: Cansahcab - Tizimín

CLAVE: 31014

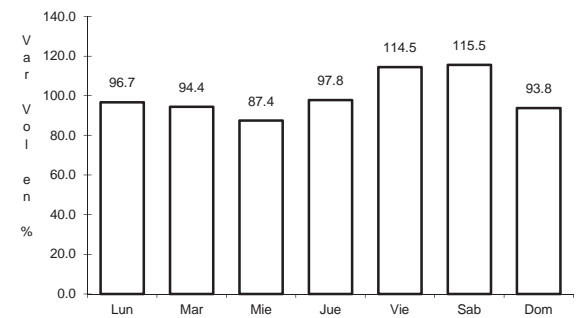
RUTA: MEX-176



Km: 0.00 Tipo: 3 Sent: 0



Km: 32.92 Tipo: 3 Sent: 0

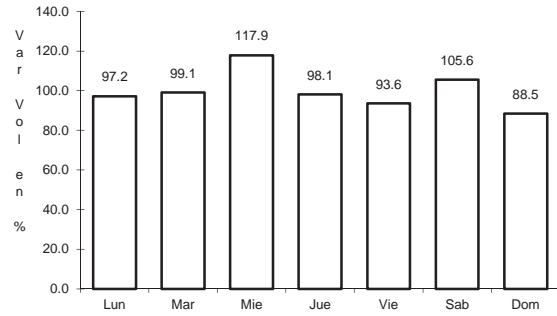


Km: 99.14 Tipo: 1 Sent: 0

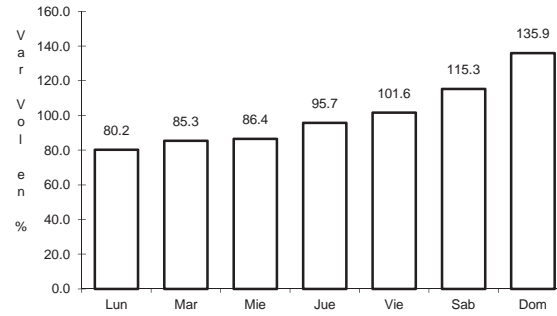
4 CARR: Conkal - Puerto Chicxulub

CLAVE: 31004

RUTA: MEX-176



Km: 0.00 Tipo: 3 Sent: 0

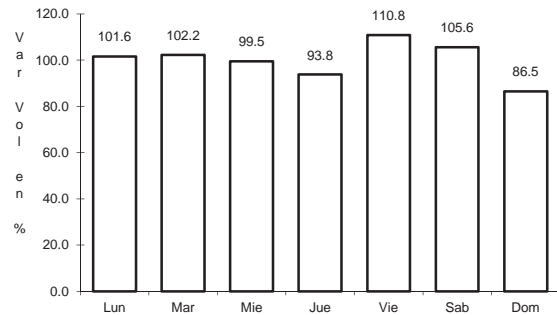


Km: 27.00 Tipo: 1 Sent: 0

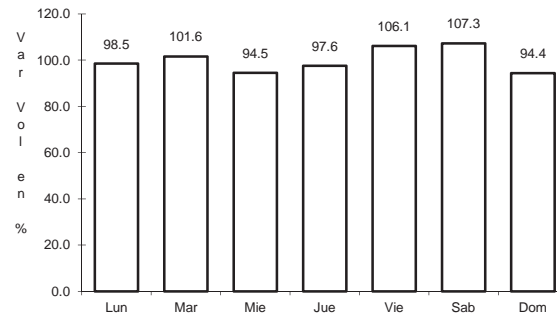
5 CARR: Dzitbalché - Ent. San Bernardo

CLAVE: 00162

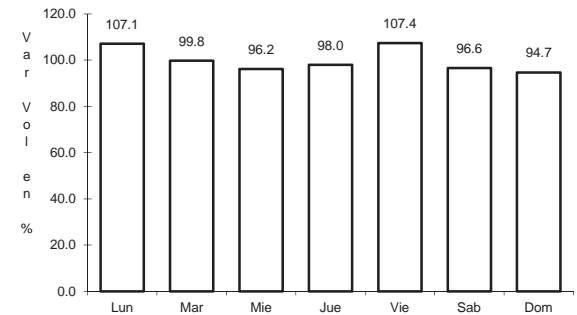
RUTA: MEX-180



Km: 12.33 Tipo: 1 Sent: 0



Km: 21.08 Tipo: 1 Sent: 0

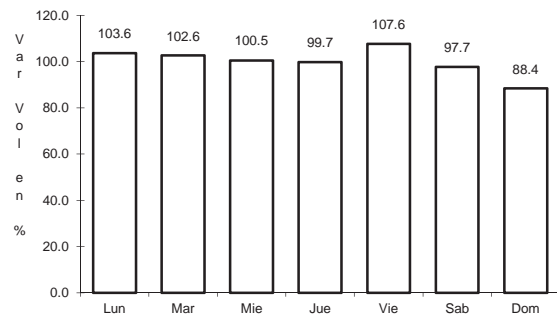


Km: 40.36 Tipo: 3 Sent: 0

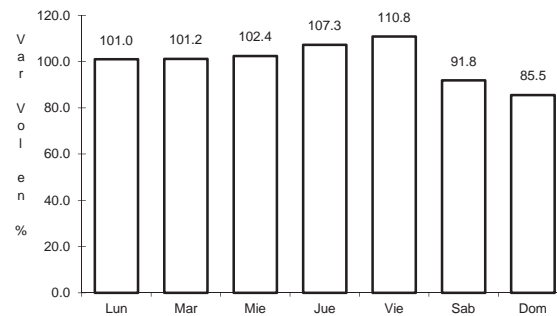
6 CARR: Ent. Poxilá - Mérida

CLAVE: 31003

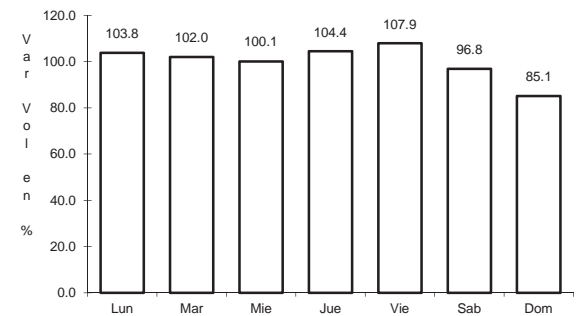
RUTA: MEX-180



Km: 9.46 Tipo: 1 Sent: 0



Km: 25.70 Tipo: 1 Sent: 1

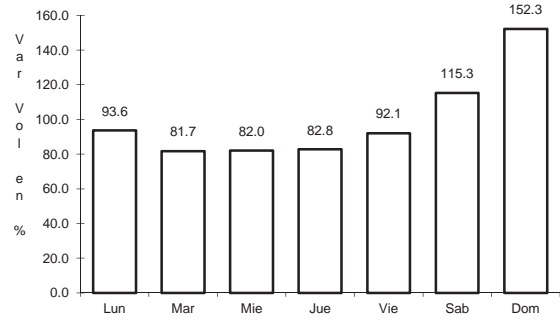


Km: 25.70 Tipo: 1 Sent: 2

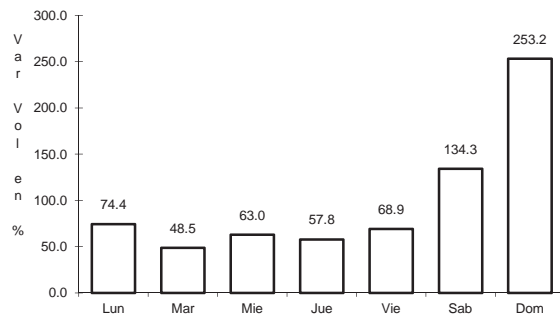
7 CARR: Hunucmá - Sisal

CLAVE: 31021

RUTA: MEX-281



Km: 0.00 Tipo: 3 Sent: 0

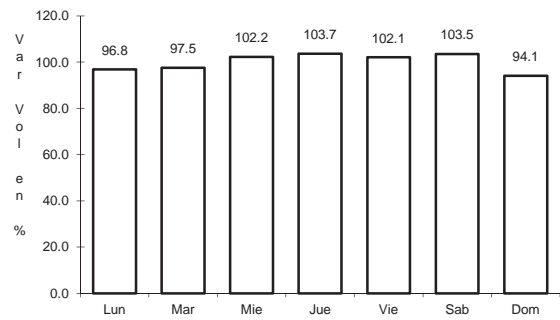


Km: 23.20 Tipo: 1 Sent: 0

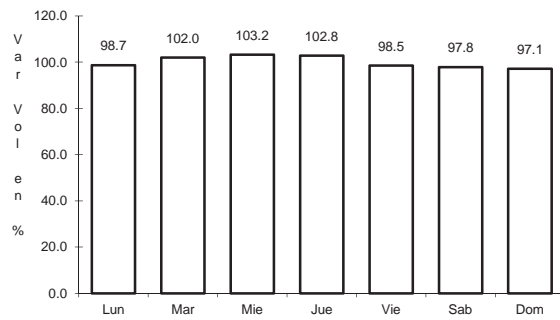
8 CARR: Libramiento de Progreso

CLAVE: 31631

RUTA: MEX-261



Km: 0.00 Tipo: 3 Sent: 0

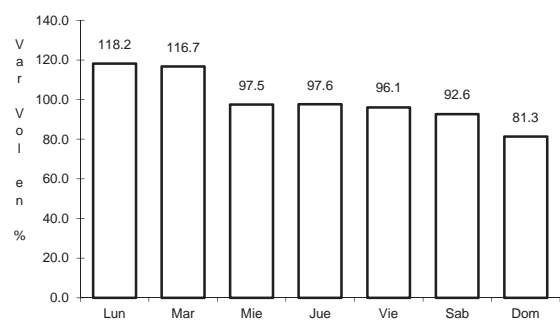


Km: 6.50 Tipo: 1 Sent: 0

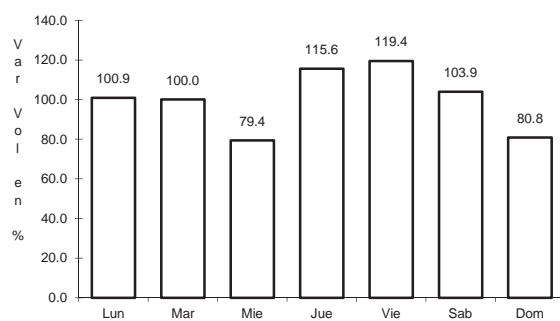
9 CARR: Mérida - Celestún

CLAVE: 31025

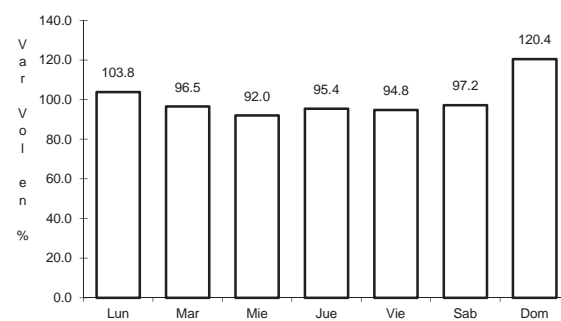
RUTA: MEX-281



Km: 0.00 Tipo: 3 Sent: 1



Km: 0.00 Tipo: 3 Sent: 2

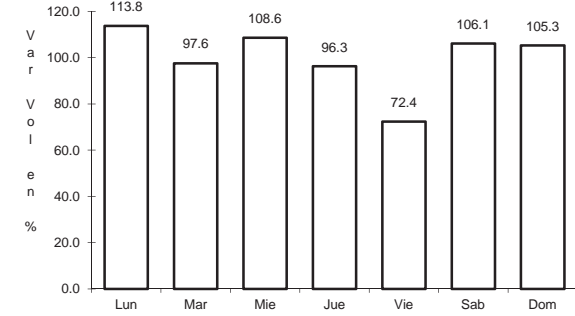
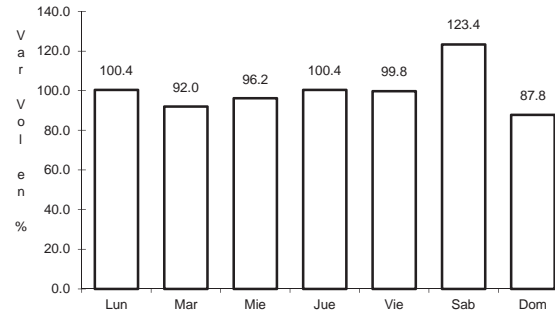
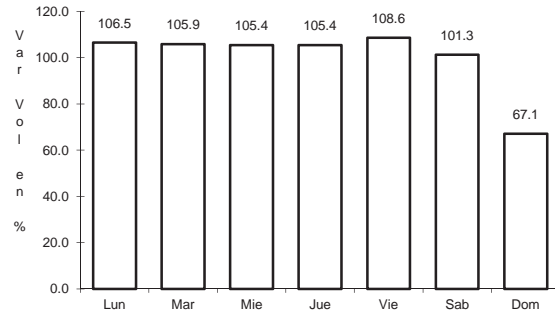


Km: 40.00 Tipo: 3 Sent: 0

10 CARR: Mérida - Dzilam de Bravo

CLAVE: 31001

RUTA: MEX-176



Km: 5.90

Tipo: 1

Sent: 1

Km: 5.90

Tipo: 1

Sent: 2

Km: 105.00

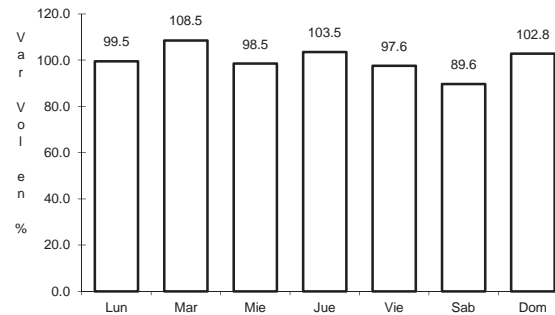
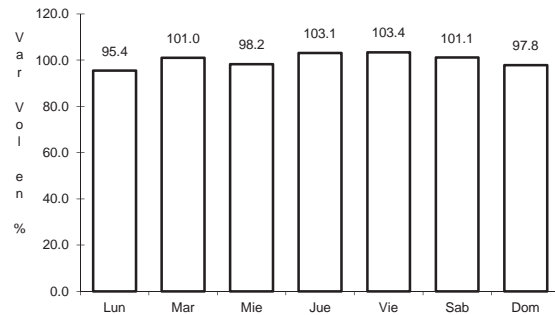
Tipo: 1

Sent: 0

11 CARR: Mérida - Progreso

CLAVE: 31091

RUTA: MEX-261



Km: 5.40

Tipo: 1

Sent: 1

Km: 5.40

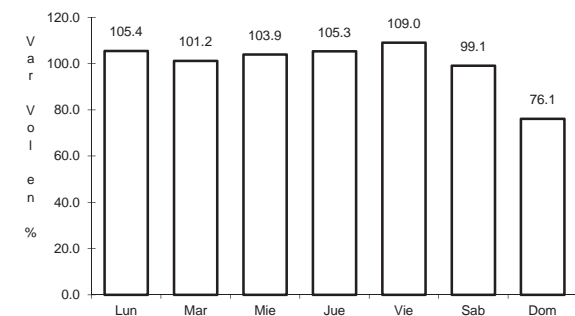
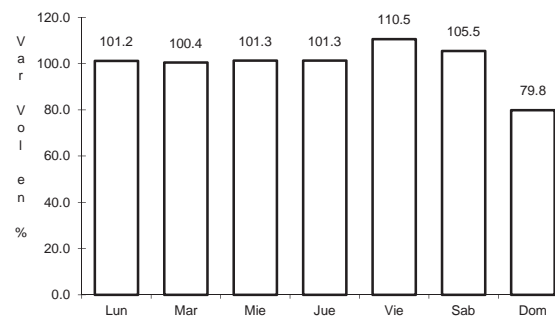
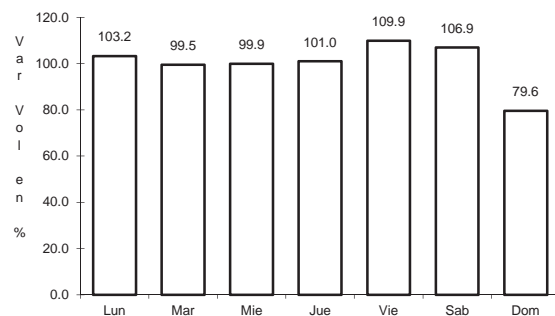
Tipo: 1

Sent: 2

12 CARR: Mérida - Puerto Juárez

CLAVE: 00067

RUTA: MEX-180



Km: 5.60

Tipo: 1

Sent: 1

Km: 5.60

Tipo: 1

Sent: 2

Km: 160.68

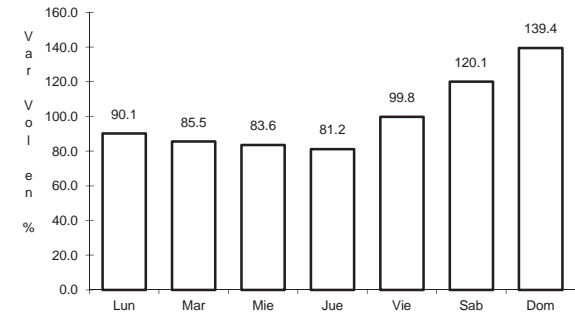
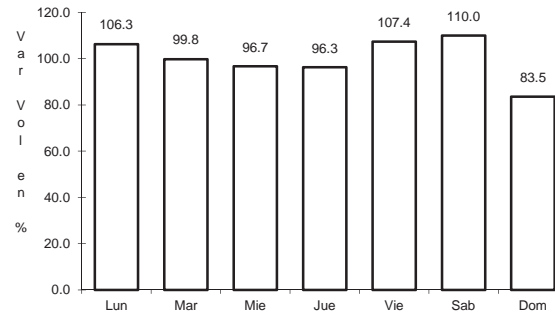
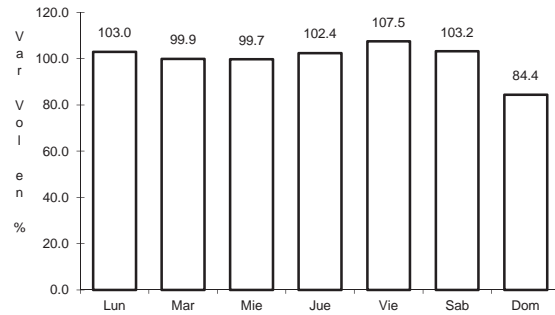
Tipo: 1

Sent: 0

13 CARR: Mérida - Tekanto

CLAVE: 31587

RUTA: MEX-180



Km: 5.70 Tipo: 1 Sent: 0

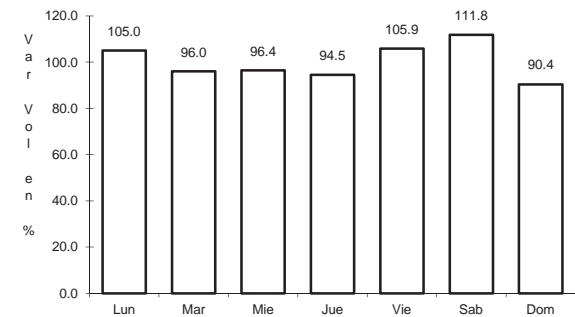
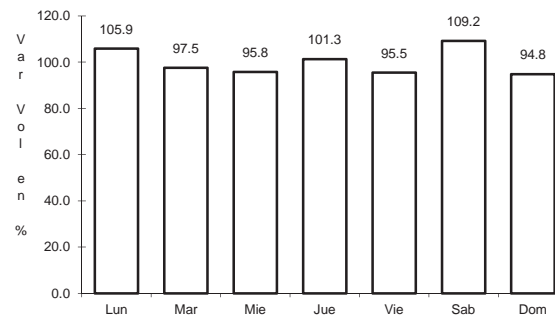
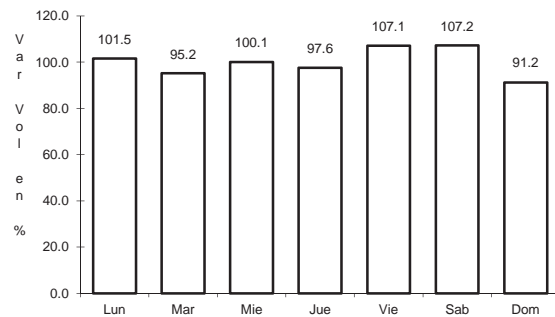
Km: 21.00 Tipo: 1 Sent: 0

Km: 51.00 Tipo: 1 Sent: 0

14 CARR: Muna - Felipe Carrillo Puerto

CLAVE: 00148

RUTA: MEX-184



Km: 0.00 Tipo: 3 Sent: 0

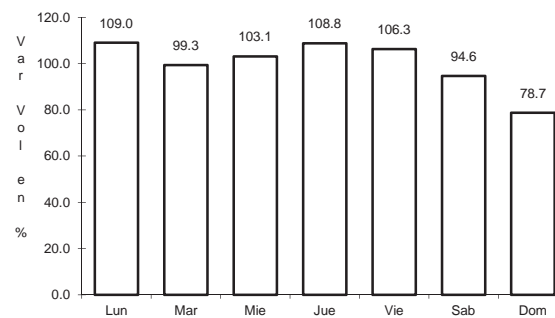
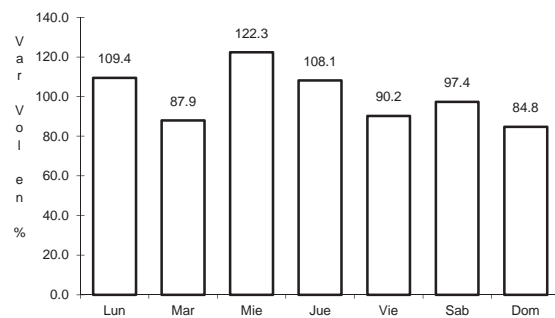
Km: 109.60 Tipo: 3 Sent: 0

Km: 216.97 Tipo: 1 Sent: 0

15 CARR: Ramal a Panabá

CLAVE: 31609

RUTA: MEX-295



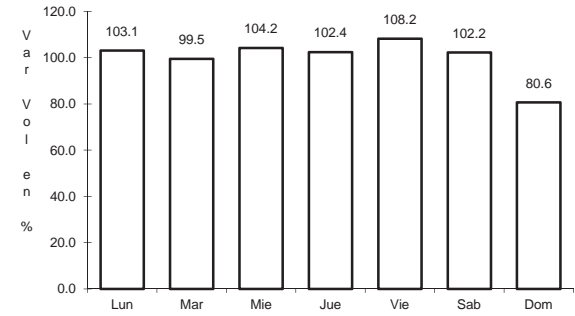
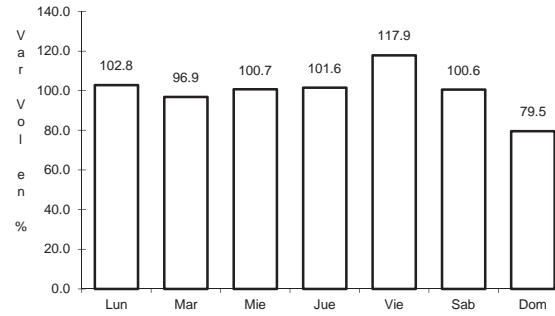
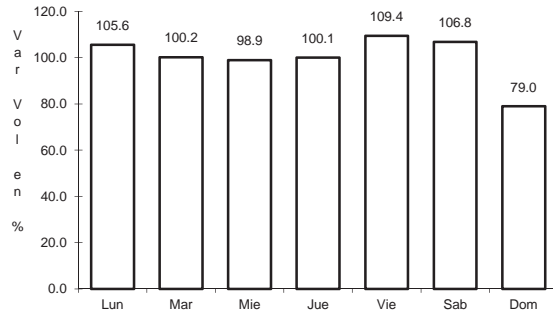
Km: 0.00 Tipo: 3 Sent: 0

Km: 18.00 Tipo: 1 Sent: 0

16 CARR: Teya -Peto

CLAVE: 31042

RUTA: MEX-184



Km: 3.80 Tipo: 3 Sent: 0

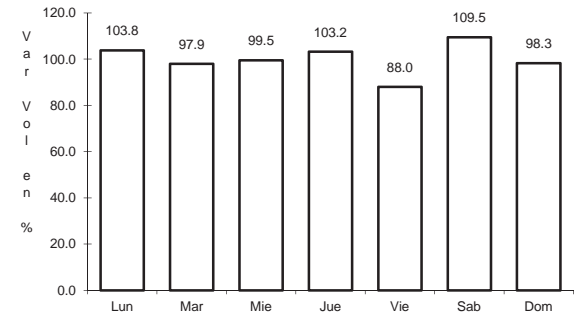
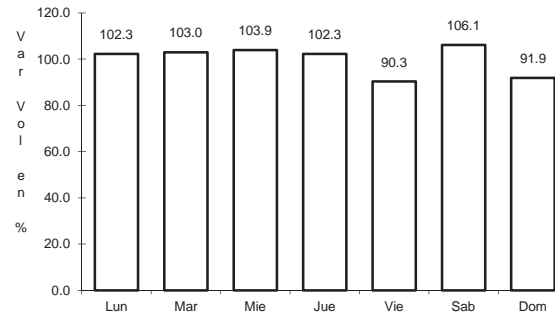
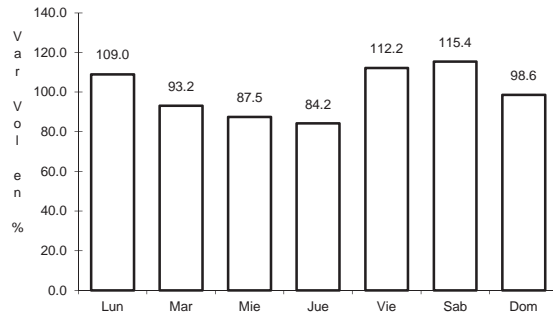
Km: 97.10 Tipo: 1 Sent: 0

Km: 120.70 Tipo: 1 Sent: 0

17 CARR: Tzucacab - Santa Rosa

CLAVE: 31017

RUTA: MEX



Km: 0.00 Tipo: 3 Sent: 0

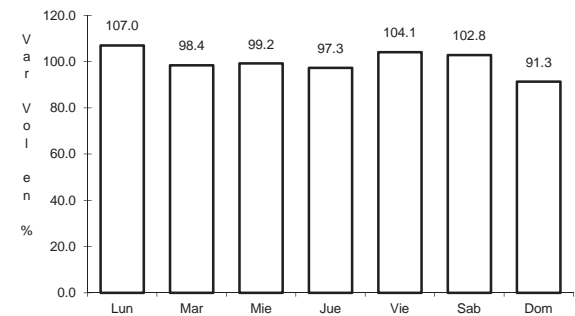
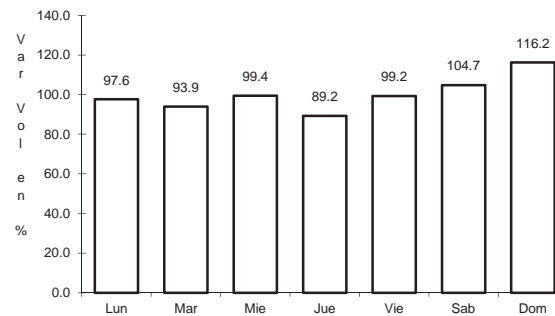
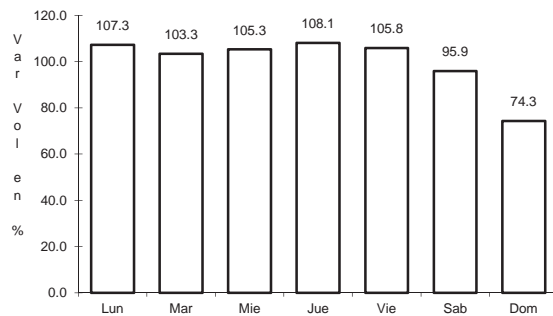
Km: 16.00 Tipo: 3 Sent: 0

Km: 34.50 Tipo: 1 Sent: 0

18 CARR: Valladolid - Felipe Carrillo Puerto

CLAVE: 00010

RUTA: MEX-295



Km: 0.00 Tipo: 3 Sent: 0

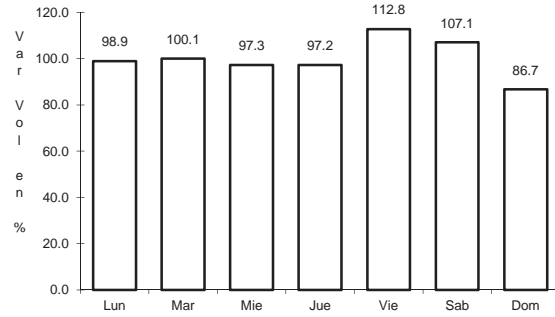
Km: 99.00 Tipo: 1 Sent: 0

Km: 147.70 Tipo: 1 Sent: 0

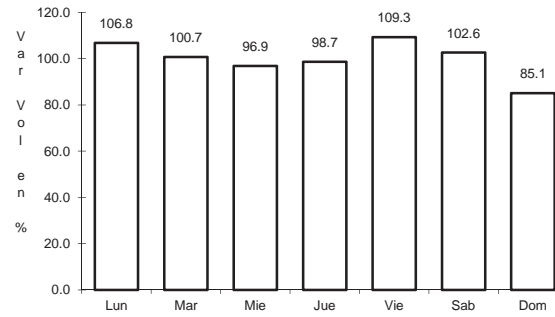
19 CARR: Valladolid - Río Lagartos

CLAVE: 31035

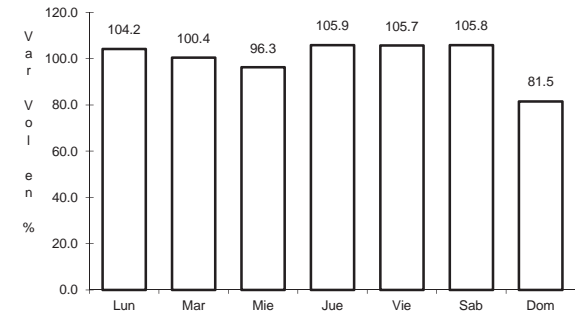
RUTA: MEX-295



Km: 0.00 Tipo: 3 Sent: 1



Km: 0.00 Tipo: 3 Sent: 2

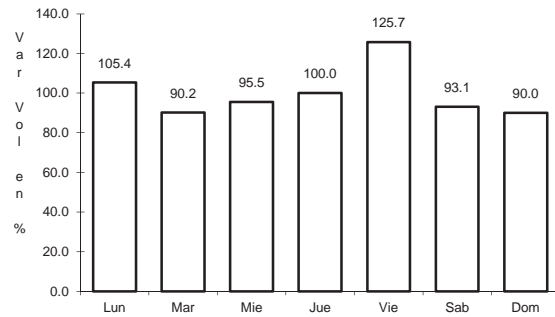


Km: 79.90 Tipo: 1 Sent: 0

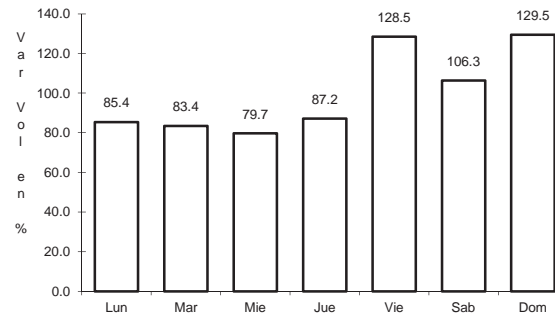
20 CARR: Mérida - Cancún (Cuota)

CLAVE: 00071

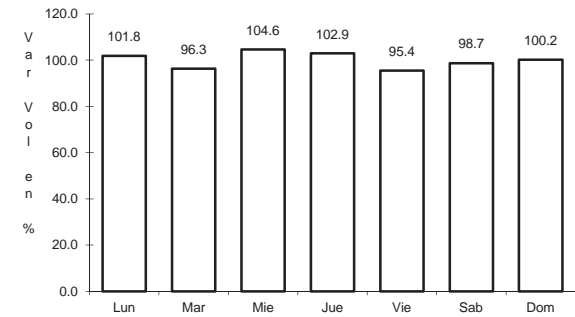
RUTA: MEX-180D



Km: 51.00 Tipo: 1 Sent: 1



Km: 51.00 Tipo: 1 Sent: 2

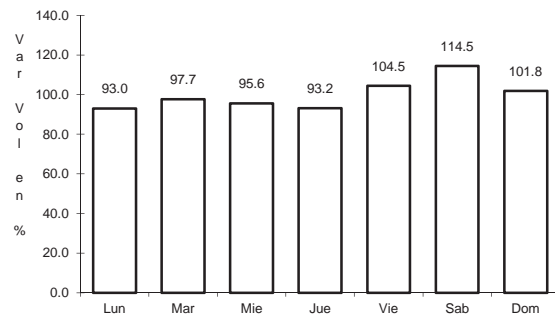


Km: 308.10 Tipo: 1 Sent: 0

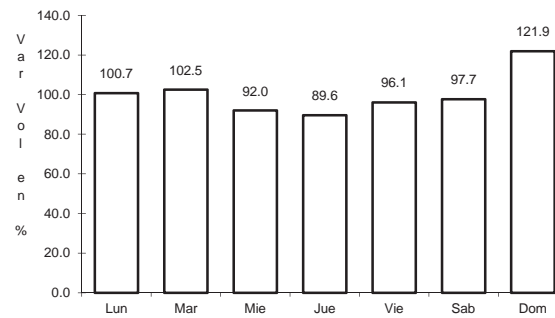
21 CARR: Acanceh - Estación Polabán

CLAVE: 31615

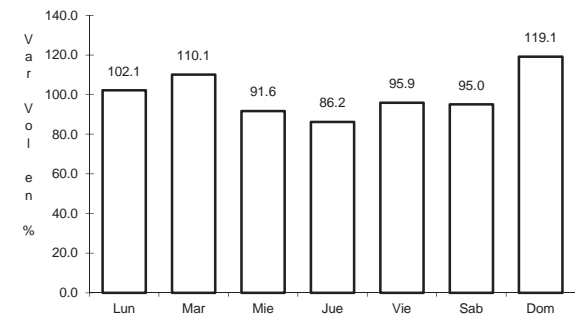
RUTA: YUC



Km: 0.00 Tipo: 3 Sent: 0



Km: 20.00 Tipo: 3 Sent: 0

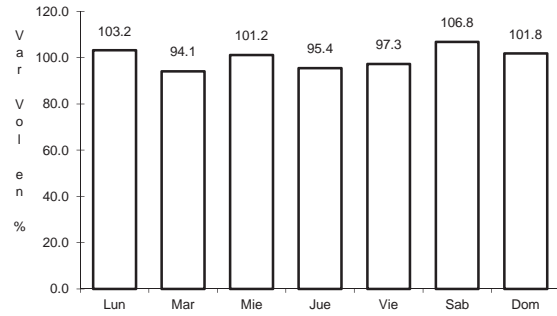


Km: 24.40 Tipo: 1 Sent: 0

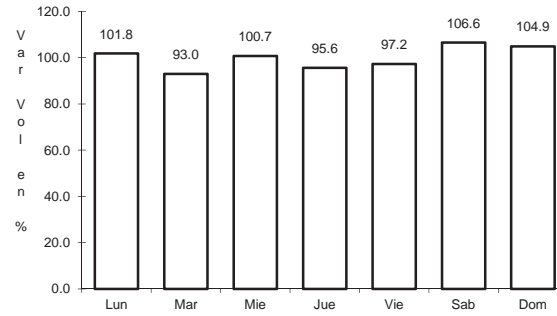
22 CARR: Baca - Dzidzantún

CLAVE: 31591

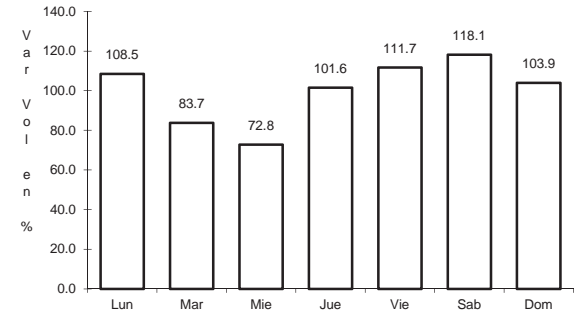
RUTA: YUC



Km: 0.00 Tipo: 3 Sent: 0



Km: 19.10 Tipo: 1 Sent: 0

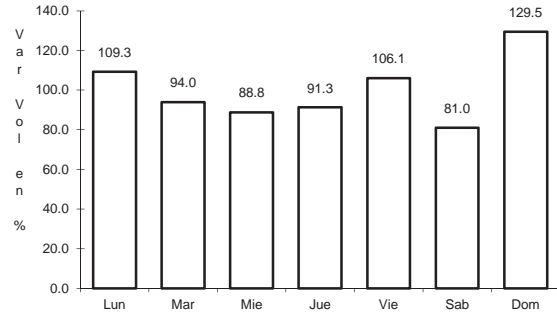


Km: 43.00 Tipo: 1 Sent: 0

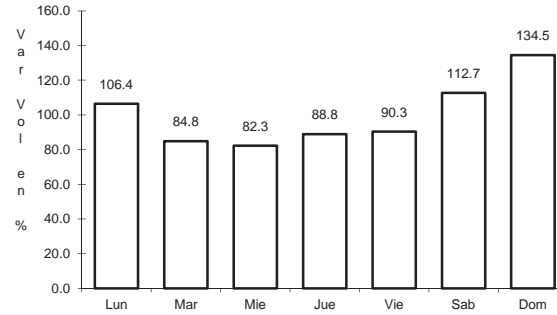
23 CARR: Citilcum - Tixkochoh

CLAVE: 31064

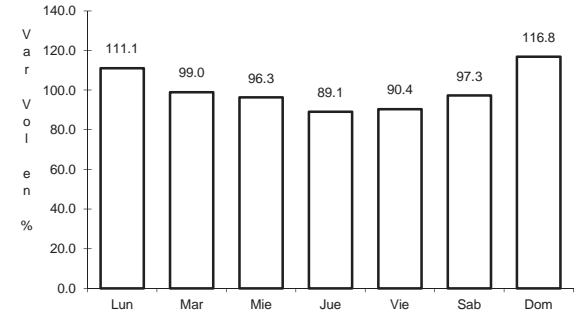
RUTA: YUC



Km: 0.00 Tipo: 3 Sent: 0



Km: 7.00 Tipo: 1 Sent: 0

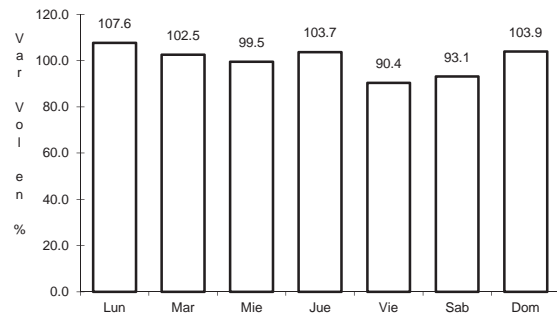


Km: 10.00 Tipo: 1 Sent: 0

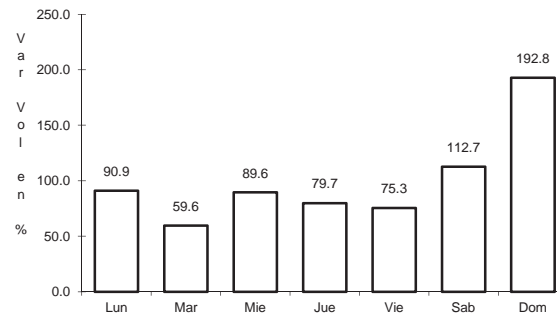
24 CARR: Dzemul - Xtampú

CLAVE: 31608

RUTA: YUC



Km: 0.00 Tipo: 3 Sent: 0

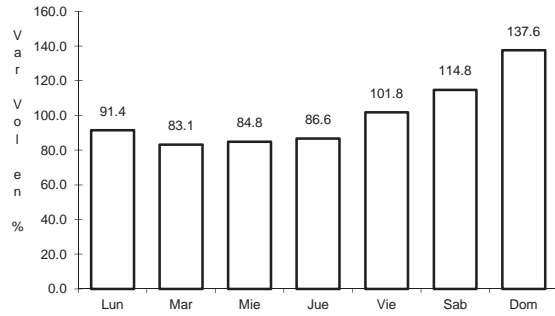


Km: 10.00 Tipo: 1 Sent: 0

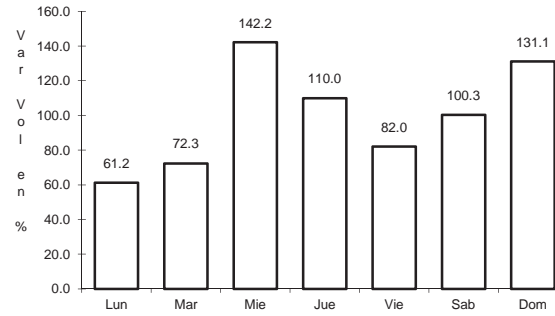
25 CARR: Dzidzantún - Santa Clara

CLAVE: 31592

RUTA: YUC



Km: 0.00 Tipo: 3 Sent: 0

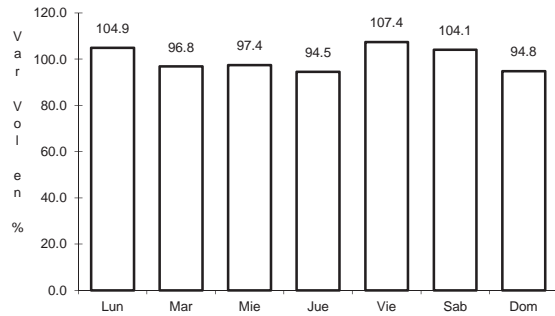


Km: 14.00 Tipo: 1 Sent: 0

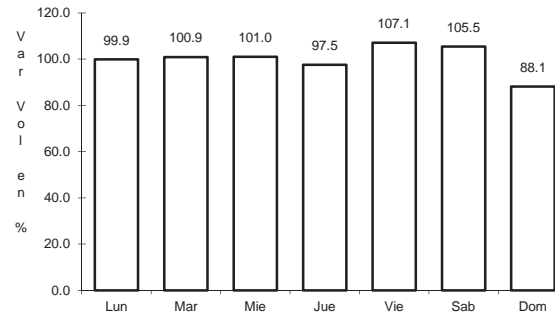
26 CARR: Hochtún - Cenotillo

CLAVE: 31011

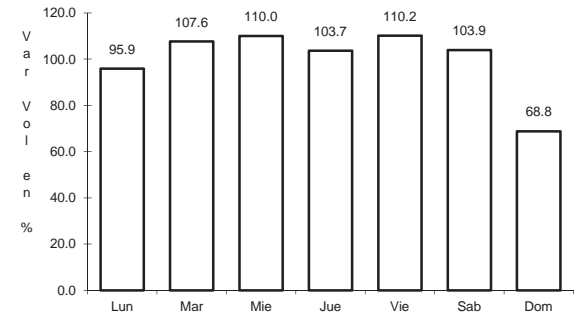
RUTA: YUC-011



Km: 0.00 Tipo: 3 Sent: 0



Km: 24.00 Tipo: 3 Sent: 0

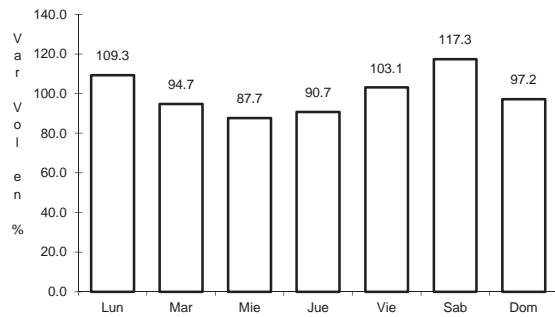


Km: 70.90 Tipo: 1 Sent: 0

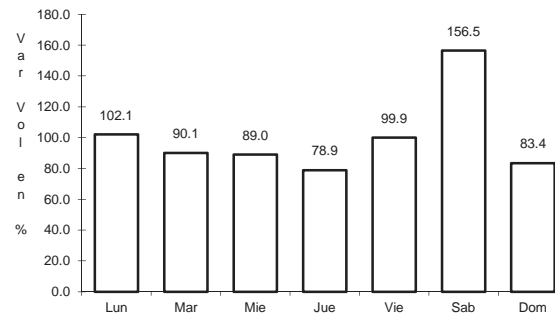
27 CARR: Holcá - Sotuta

CLAVE: 31626

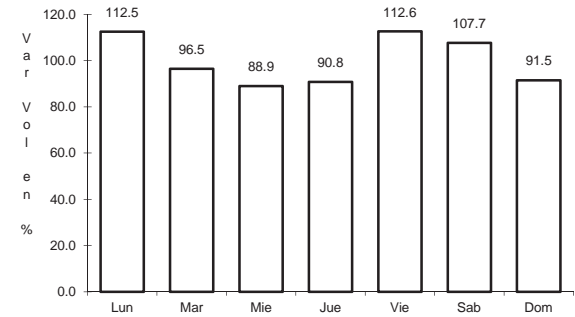
RUTA: YUC



Km: 0.00 Tipo: 3 Sent: 0



Km: 10.00 Tipo: 3 Sent: 0

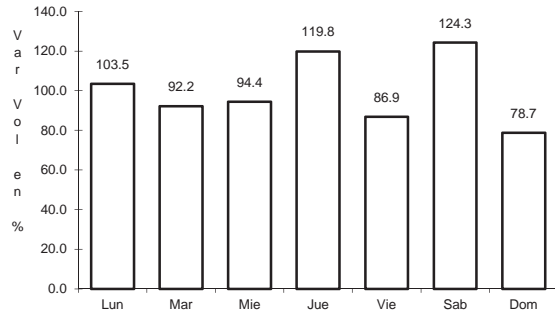


Km: 20.00 Tipo: 1 Sent: 0

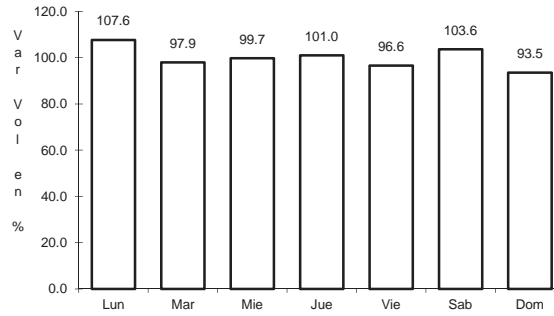
28 CARR: Hunucmá - Umán

CLAVE: 31610

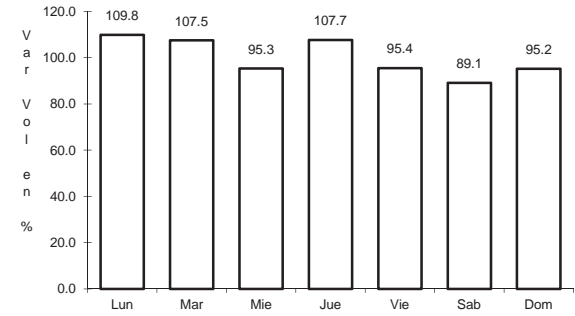
RUTA: YUC



Km: 0.00 Tipo: 3 Sent: 0



Km: 16.16 Tipo: 1 Sent: 0

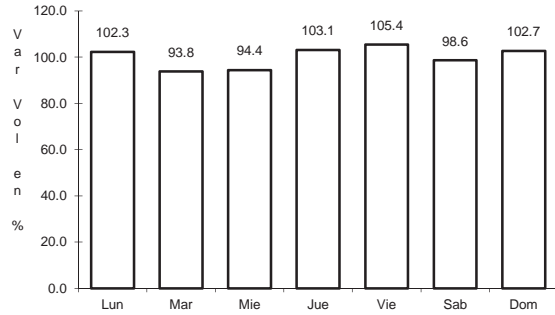


Km: 22.00 Tipo: 1 Sent: 0

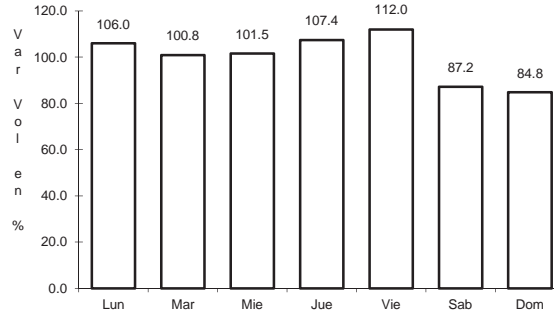
29 CARR: Izamal - Dzilam González

CLAVE: 31605

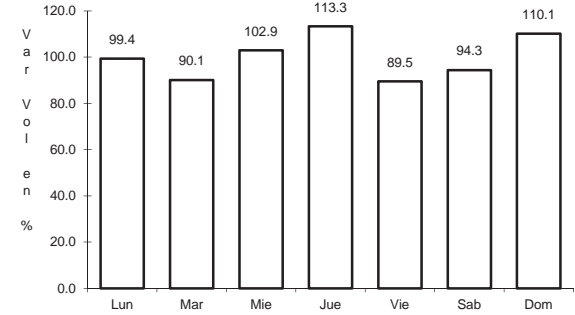
RUTA: YUC



Km: 0.00 Tipo: 3 Sent: 0



Km: 30.00 Tipo: 1 Sent: 0

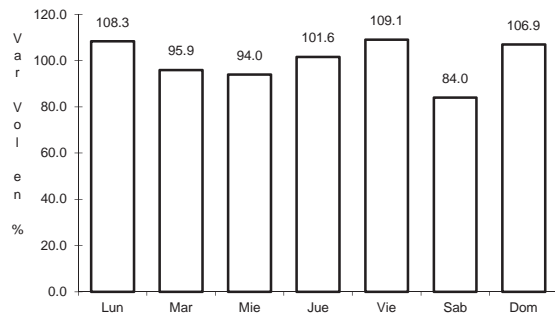


Km: 43.00 Tipo: 1 Sent: 0

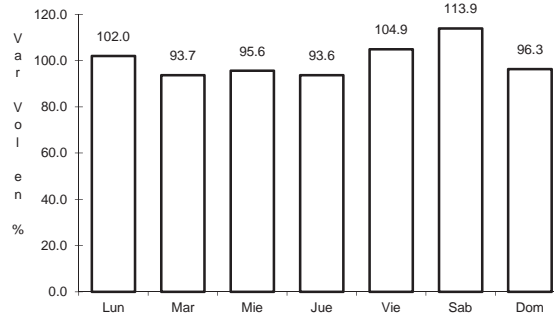
30 CARR: Kantunil - Izamal

CLAVE: 31012

RUTA: YUC



Km: 0.00 Tipo: 3 Sent: 0

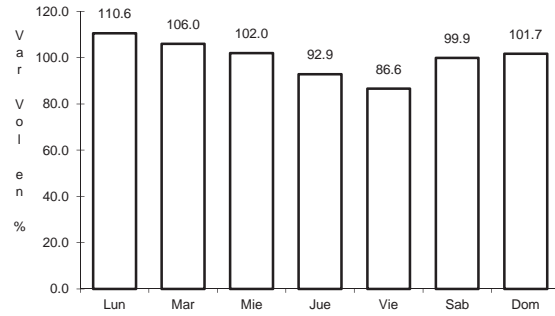


Km: 17.80 Tipo: 1 Sent: 0

31 CARR: Kinchil - Umán

CLAVE: 31009

RUTA: YUC



Km: 0.00

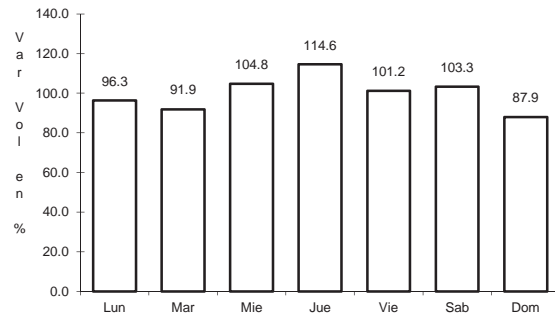
Tipo: 3

Sent: 0

32 CARR: Libramiento Norte de Motul

CLAVE: 31610

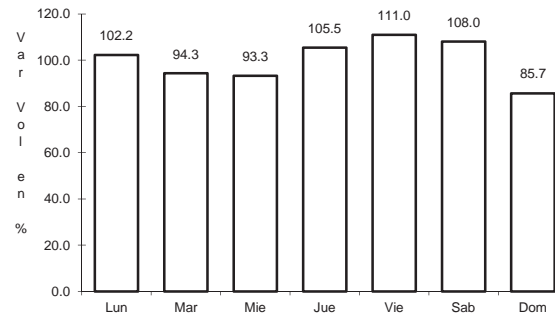
RUTA: YUC



Km: 0.00

Tipo: 3

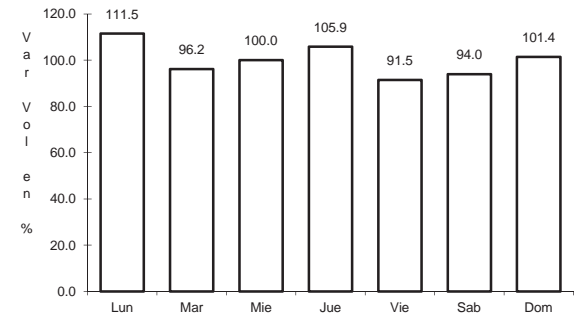
Sent: 0



Km: 3.16

Tipo: 3

Sent: 0



Km: 6.53

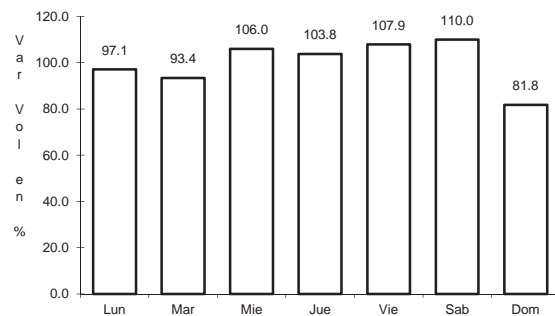
Tipo: 1

Sent: 0

33 CARR: Mérida - Acanceh

CLAVE: 31023

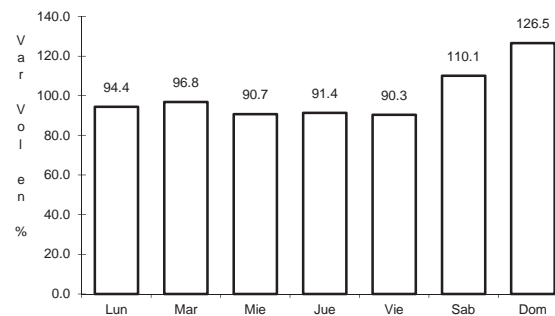
RUTA: YUC



Km: 0.00

Tipo: 3

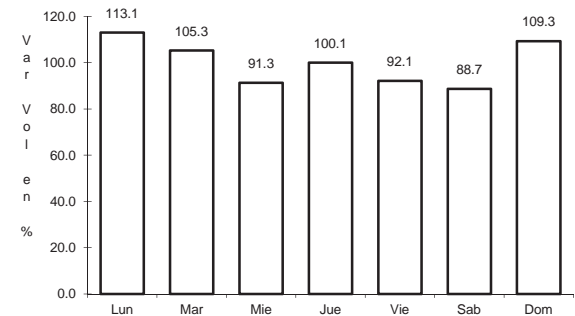
Sent: 0



Km: 11.00

Tipo: 3

Sent: 0



Km: 26.00

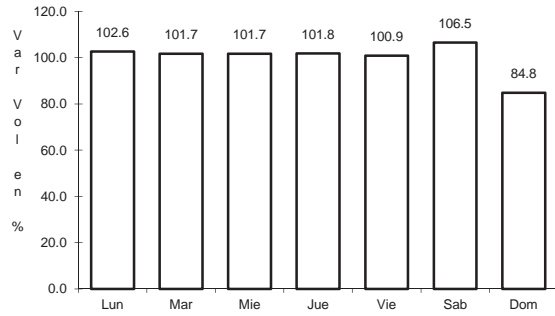
Tipo: 1

Sent: 0

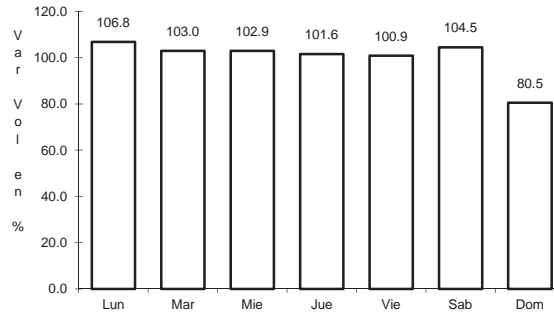
34 CARR: Mérida - Oxkutzcab

CLAVE: 31018

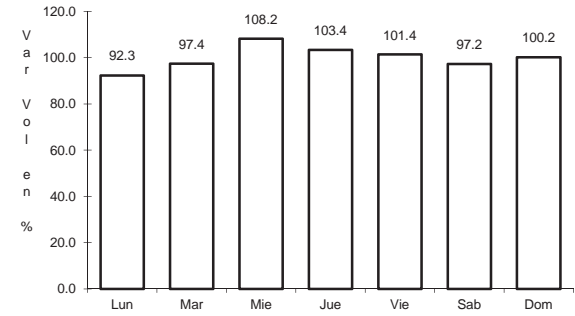
RUTA: YUC-018



Km: 0.00 Tipo: 3 Sent: 1



Km: 0.00 Tipo: 3 Sent: 2

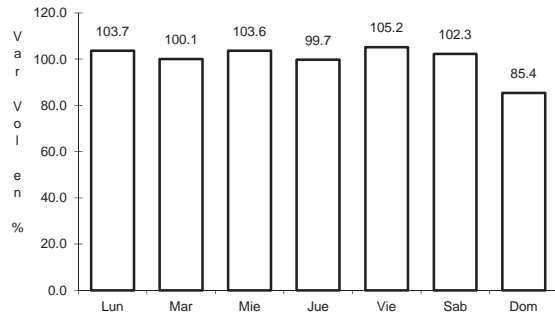


Km: 109.30 Tipo: 1 Sent: 0

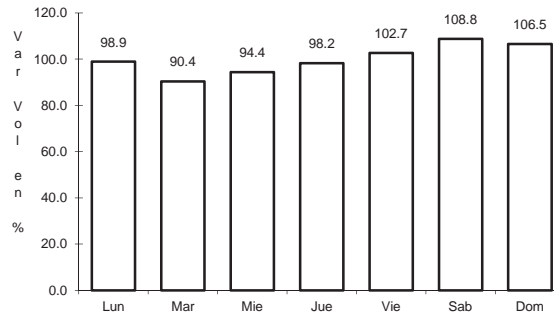
35 CARR: Mérida - Tetiz

CLAVE: 31610

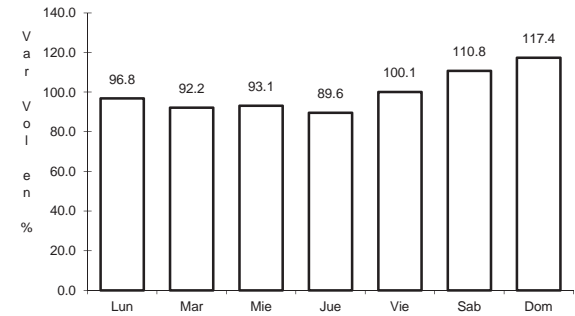
RUTA: YUC



Km: 0.00 Tipo: 3 Sent: 0



Km: 17.98 Tipo: 1 Sent: 0

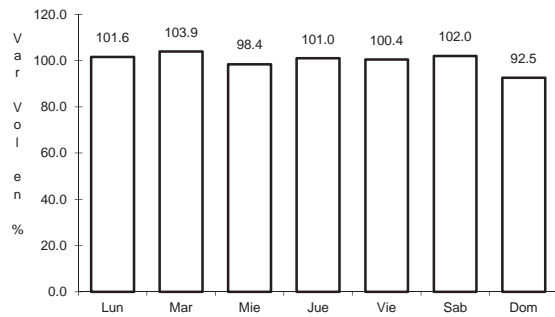


Km: 24.40 Tipo: 1 Sent: 0

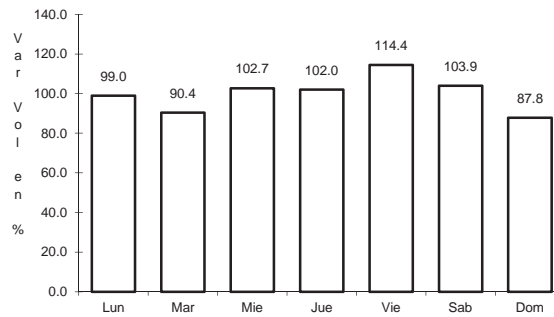
36 CARR: Mérida - Timucuy

CLAVE: 31024

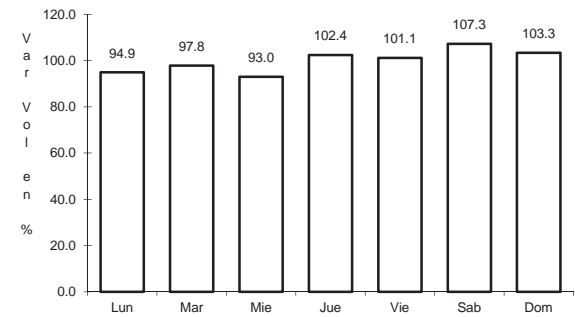
RUTA: YUC



Km: 0.00 Tipo: 3 Sent: 0



Km: 15.10 Tipo: 1 Sent: 0

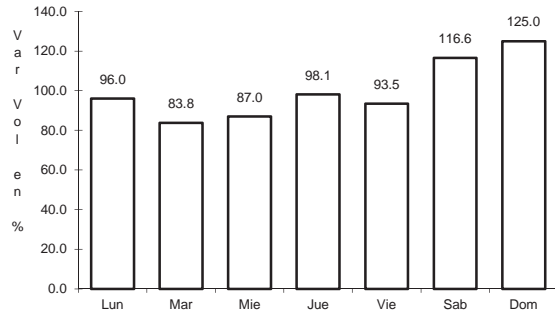


Km: 18.65 Tipo: 1 Sent: 0

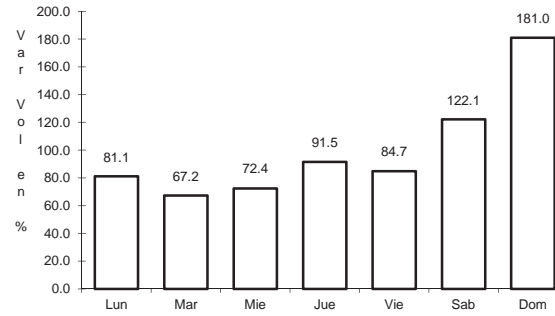
37 CARR: Motul - Puerto Telchac

CLAVE: 31006

RUTA: YUC-172



Km: 0.00 Tipo: 3 Sent: 0

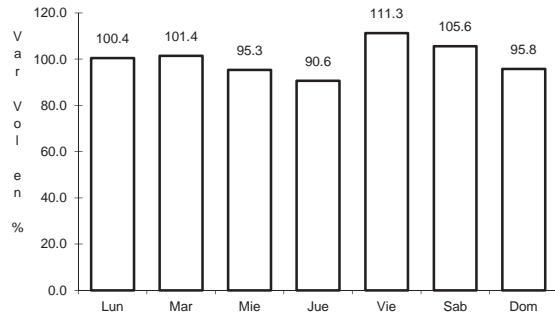


Km: 12.00 Tipo: 3 Sent: 0

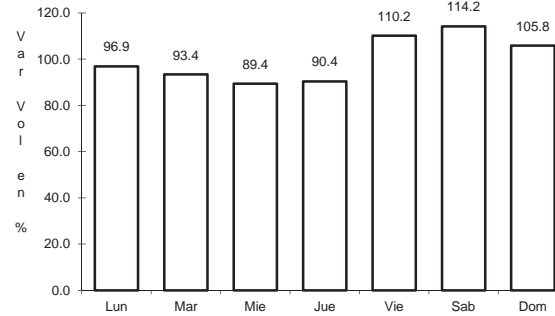
38 CARR: Muna - Maxcanú

CLAVE: 31053

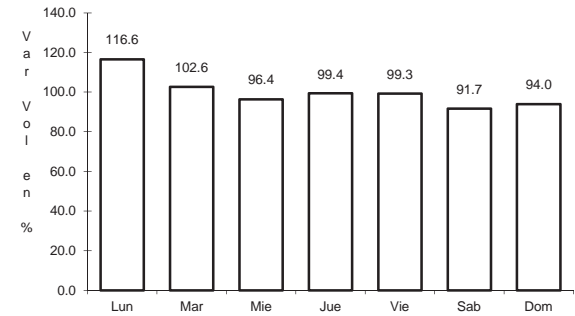
RUTA: YUC



Km: 0.00 Tipo: 3 Sent: 0



Km: 17.00 Tipo: 3 Sent: 0

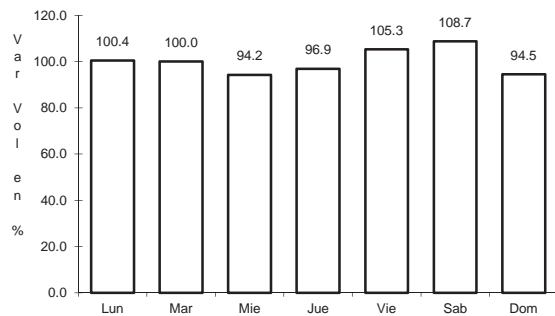


Km: 31.00 Tipo: 1 Sent: 0

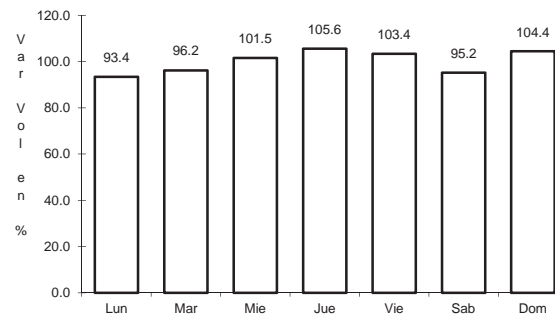
39 CARR: Oxkutzcab - Xul

CLAVE: 31051

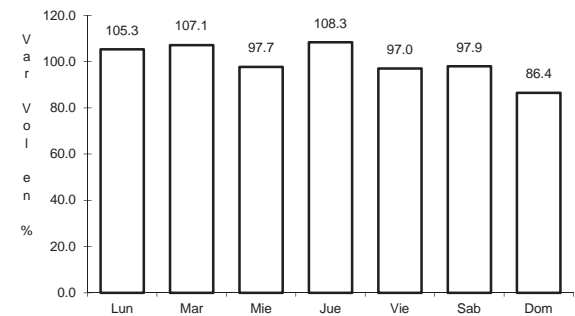
RUTA: YUC-031



Km: 0.00 Tipo: 3 Sent: 0



Km: 10.00 Tipo: 3 Sent: 0

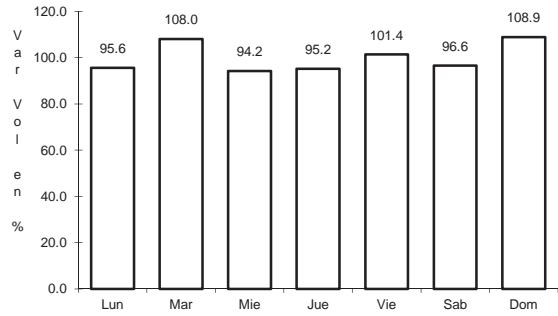


Km: 25.00 Tipo: 1 Sent: 0

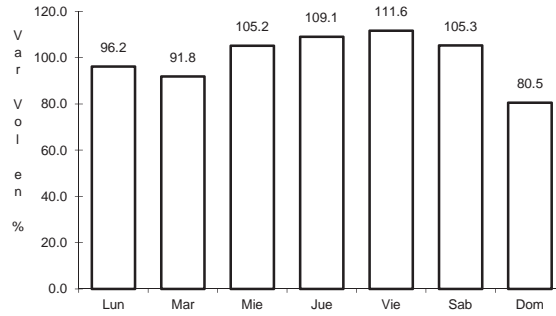
40 CARR: Piste - Dzitás

CLAVE: 31013

RUTA: YUC-013



Km: 0.00 Tipo: 3 Sent: 0

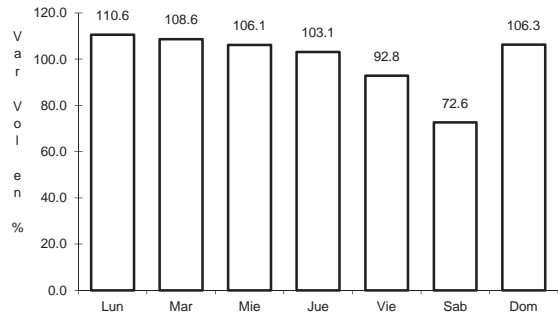


Km: 18.00 Tipo: 1 Sent: 0

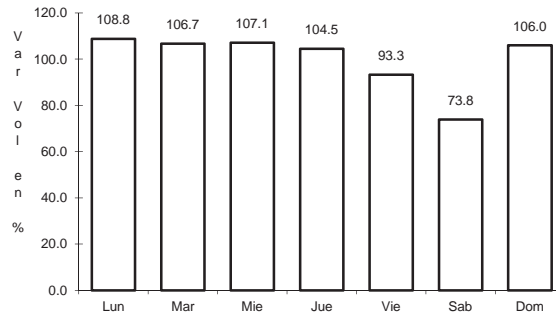
41 CARR: Progreso - Telchac Puerto

CLAVE: 31616

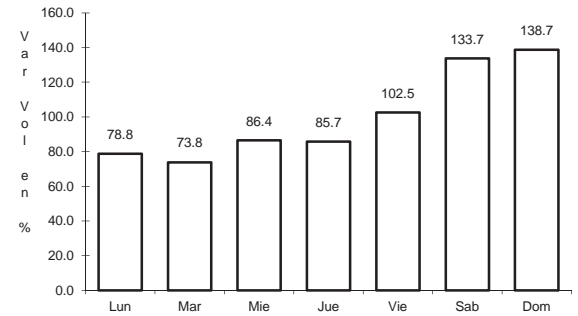
RUTA: YUC-027



Km: 0.00 Tipo: 3 Sent: 1



Km: 0.00 Tipo: 3 Sent: 2

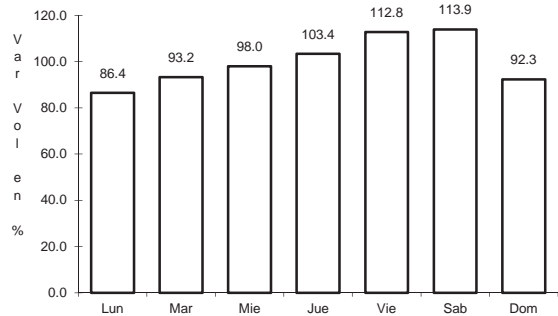


Km: 33.00 Tipo: 1 Sent: 0

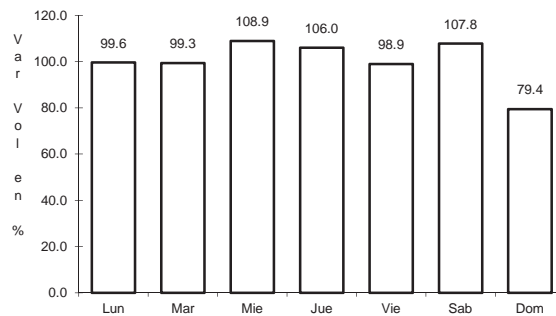
42 CARR: Ramal a Chankom

CLAVE: 31049

RUTA: YUC



Km: 0.00 Tipo: 3 Sent: 0

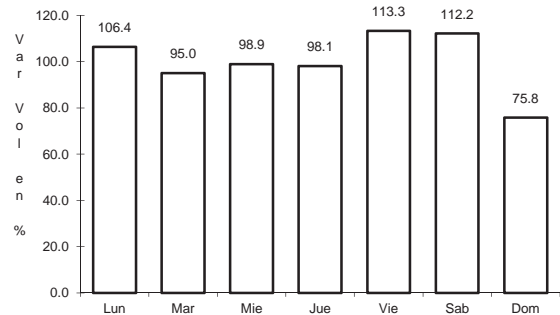


Km: 9.00 Tipo: 1 Sent: 0

43 CARR: Ramal a Dzonot Carretero

CLAVE: 31614

RUTA: YUC



Km: 0.00

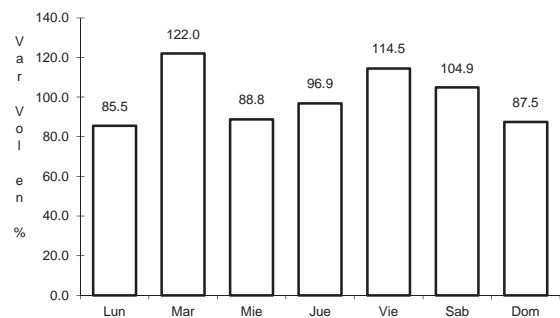
Tipo: 3

Sent: 0

44 CARR: Ramal a San Felipe

CLAVE: 31628

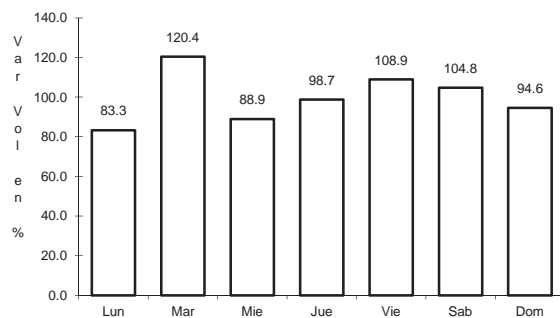
RUTA: YUC



Km: 0.00

Tipo: 3

Sent: 0



Km: 7.20

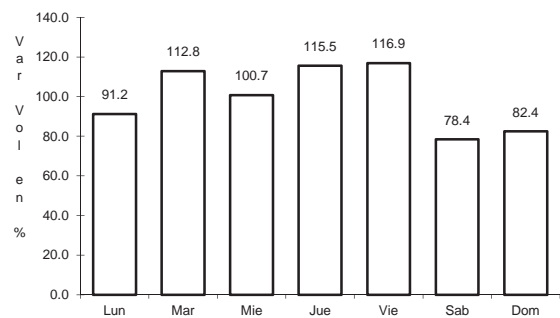
Tipo: 1

Sent: 0

45 CARR: Ramal a Tedzidz

CLAVE: 31600

RUTA: YUC



Km: 6.00

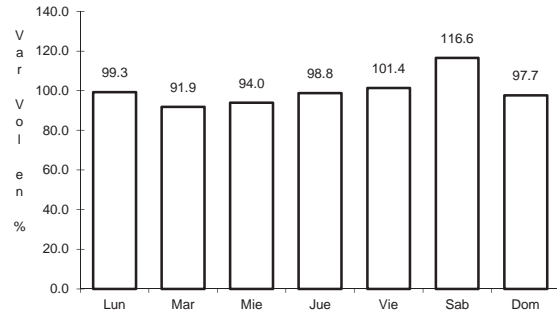
Tipo: 1

Sent: 0

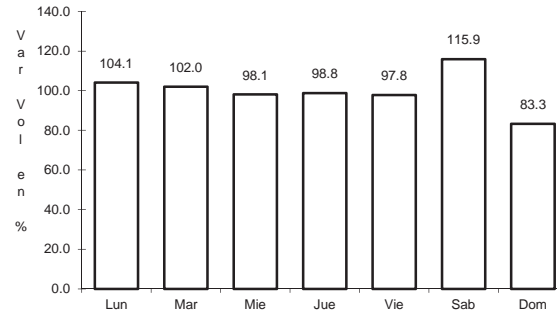
46 CARR: Ramal a Yaxcabá

CLAVE: 31111

RUTA: YUC-289



Km: 0.00 Tipo: 3 Sent: 0

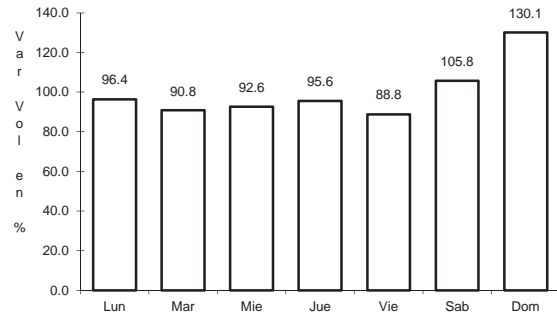


Km: 18.00 Tipo: 1 Sent: 0

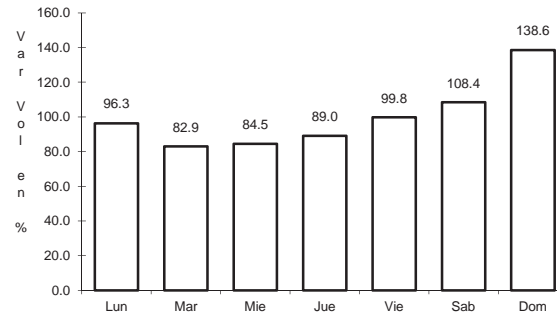
47 CARR: Sinanché - Xitibcanul

CLAVE: 31619

RUTA: YUC



Km: 0.00 Tipo: 3 Sent: 0

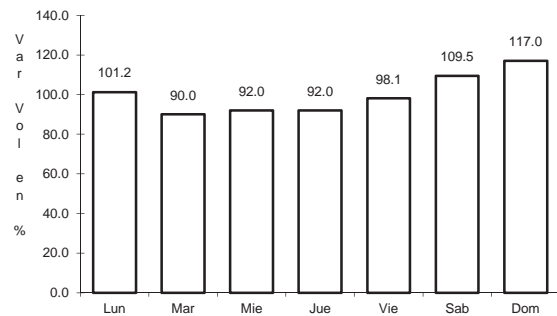


Km: 7.00 Tipo: 1 Sent: 0

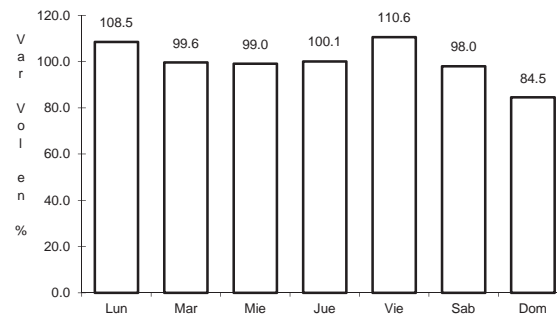
48 CARR: Sucilá - Calotmul

CLAVE: 31617

RUTA: YUC



Km: 2.00 Tipo: 3 Sent: 0

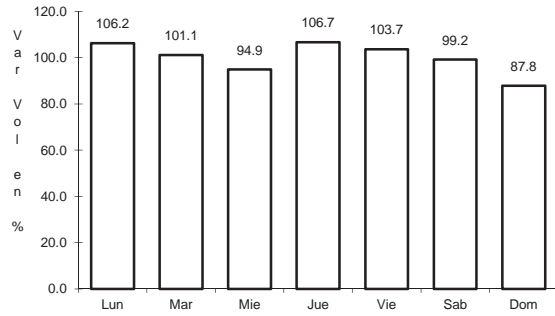


Km: 30.20 Tipo: 1 Sent: 0

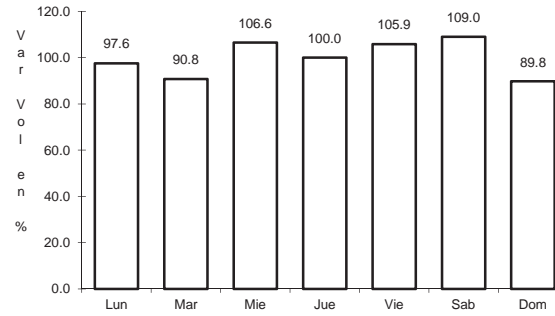
49 CARR: Suma - Izamal

CLAVE: 31081

RUTA: YUC-081



Km: 0.00 Tipo: 3 Sent: 0

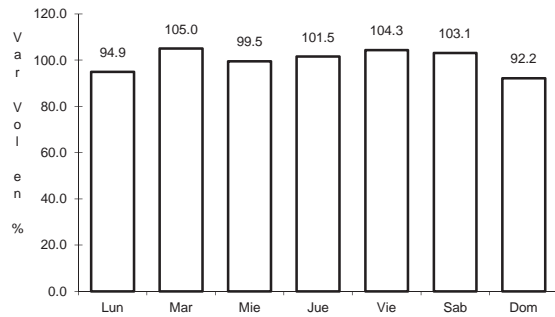


Km: 22.00 Tipo: 1 Sent: 0

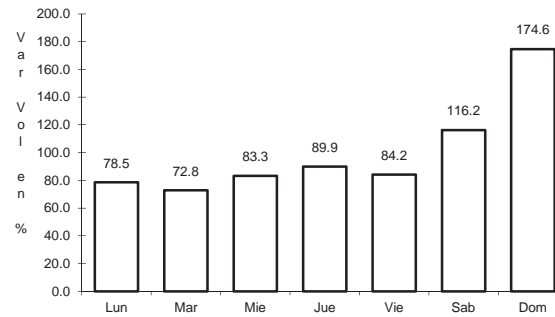
50 CARR: Telchac Puerto - Dzilam de Bravo

CLAVE: 31042

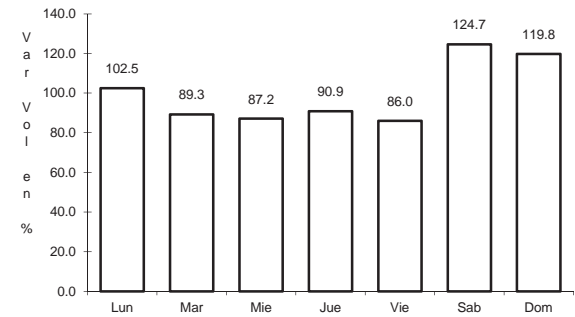
RUTA: YUC



Km: 0.00 Tipo: 3 Sent: 0



Km: 26.00 Tipo: 1 Sent: 0

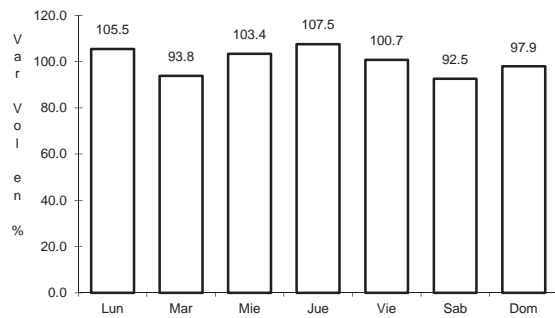


Km: 39.00 Tipo: 1 Sent: 0

51 CARR: Thul - Becanchén

CLAVE: 31104

RUTA: YUC-281

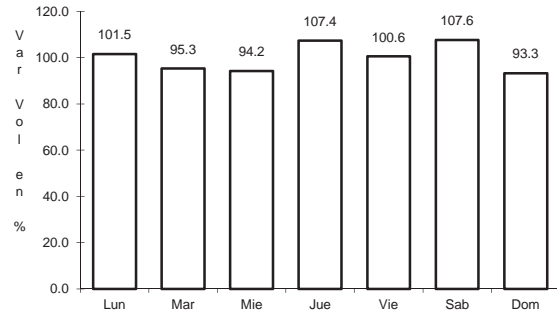


Km: 0.00 Tipo: 3 Sent: 0

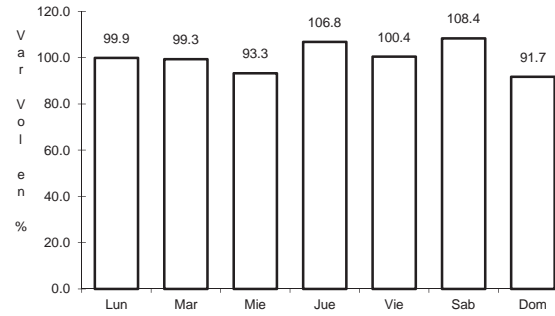
52 CARR: Ticul - Chapab

CLAVE: 31623

RUTA: YUC



Km: 0.00 Tipo: 3 Sent: 0

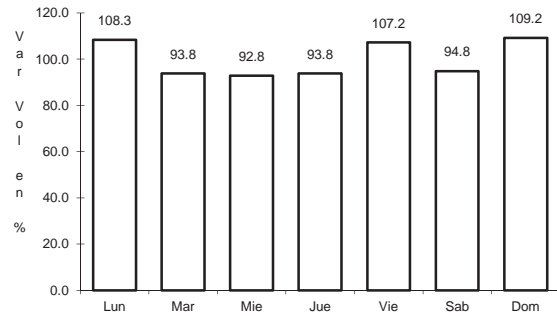


Km: 8.00 Tipo: 1 Sent: 0

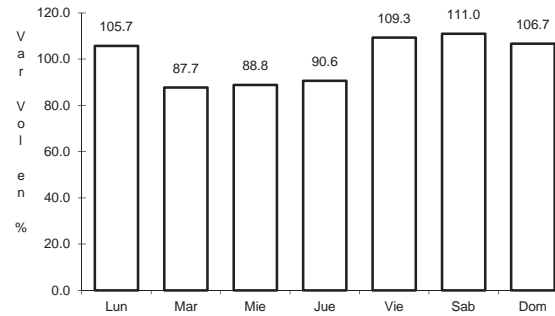
53 CARR: Ticul - Dzan

CLAVE: 31621

RUTA: YUC



Km: 2.50 Tipo: 3 Sent: 0

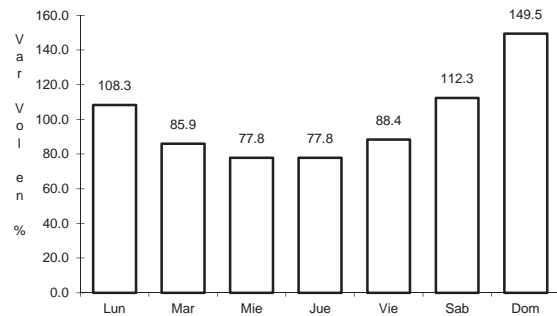


Km: 7.00 Tipo: 1 Sent: 0

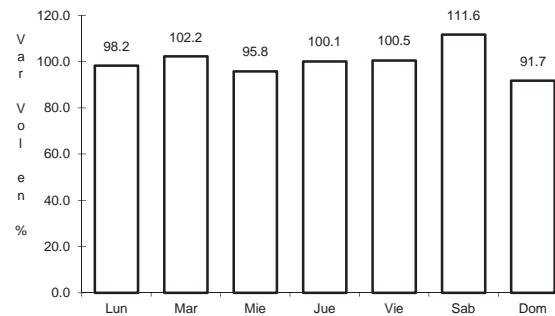
54 CARR: Tixkokob - Baca

CLAVE: 31010

RUTA: YUC



Km: 0.00 Tipo: 3 Sent: 0

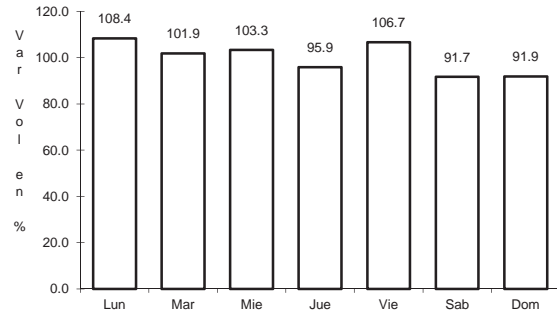


Km: 15.00 Tipo: 1 Sent: 0

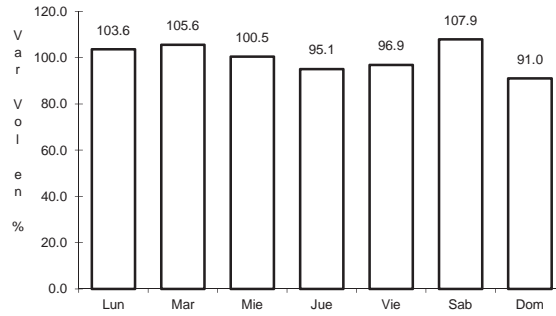
55 CARR: Tixkokob - Sotuta

CLAVE: 31106

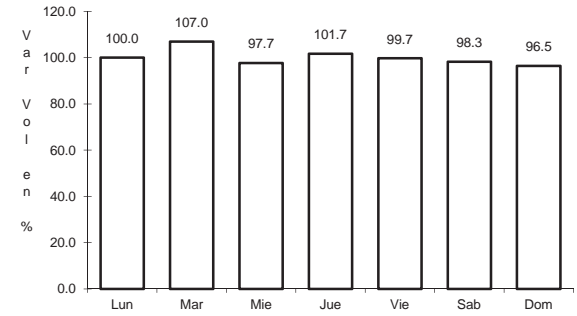
RUTA: YUC



Km: 0.00 Tipo: 3 Sent: 0



Km: 31.00 Tipo: 3 Sent: 0

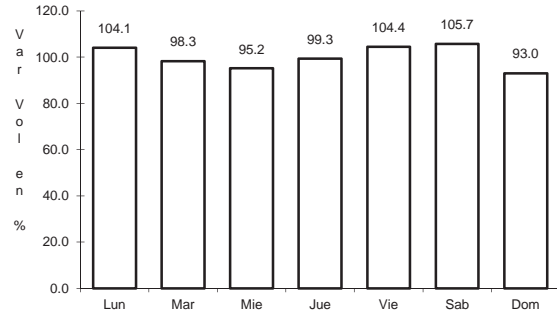


Km: 65.00 Tipo: 1 Sent: 0

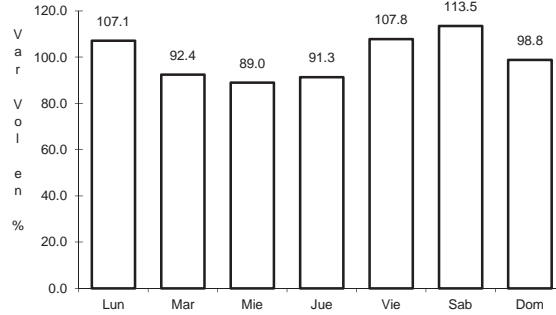
56 CARR: Tizimín - Yucatán

CLAVE: 31588

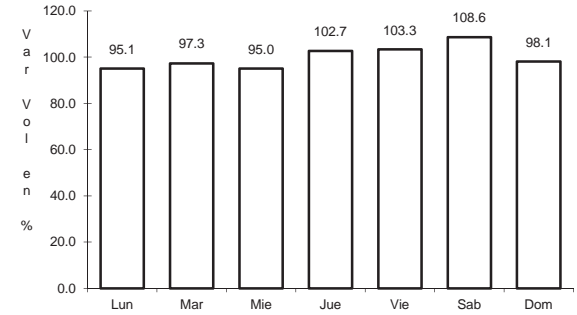
RUTA: YUC



Km: 0.00 Tipo: 3 Sent: 0



Km: 30.00 Tipo: 3 Sent: 0

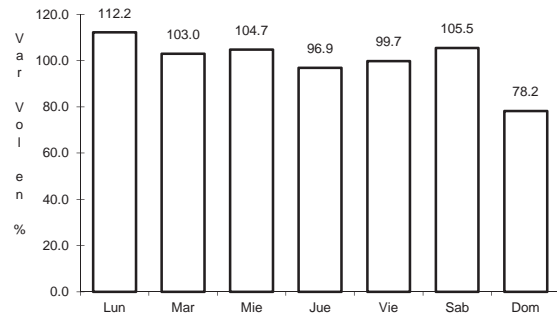


Km: 46.50 Tipo: 1 Sent: 0

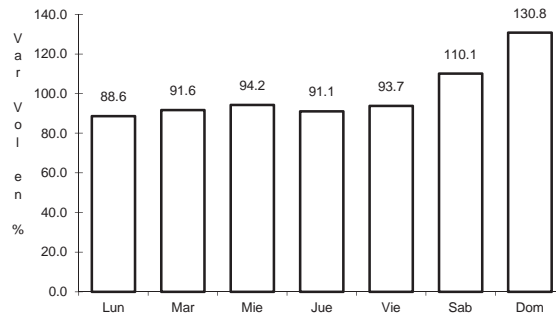
57 CARR: Yaxché - Sierra Papacal

CLAVE: 31620

RUTA: YUC



Km: 0.00 Tipo: 3 Sent: 0

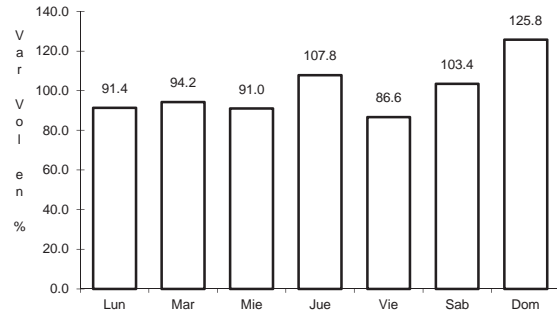


Km: 12.00 Tipo: 1 Sent: 0

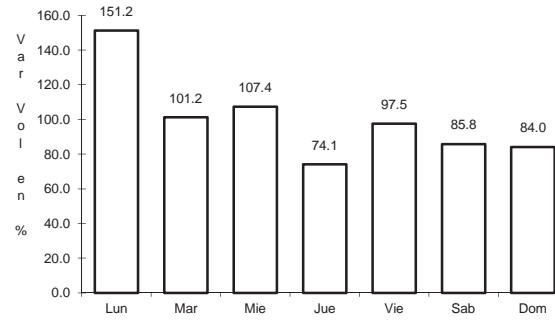
58 CARR: Yobaín - Chabihau

CLAVE: 31610

RUTA: YUC



Km: 0.00 Tipo: 3 Sent: 0

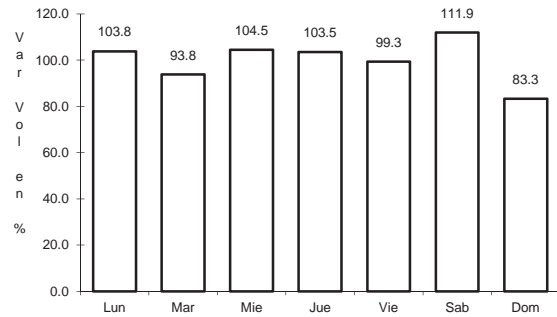


Km: 12.00 Tipo: 1 Sent: 0

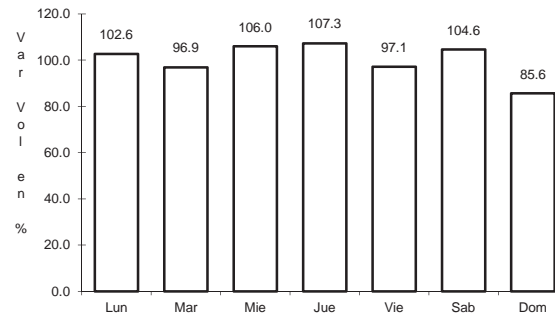
59 CARR: Progreso - Celestún

CLAVE: 31040

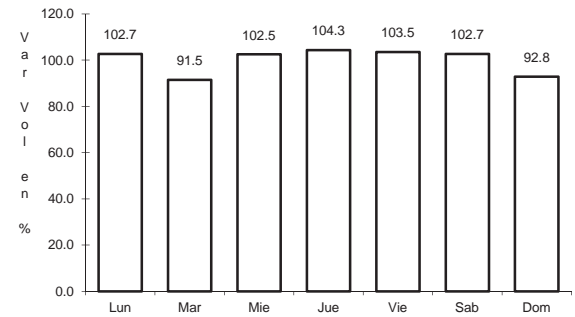
RUTA: MEX-YUC



Km: 0.00 Tipo: 3 Sent: 1



Km: 0.00 Tipo: 3 Sent: 2



Km: 6.00 Tipo: 3 Sent: 0