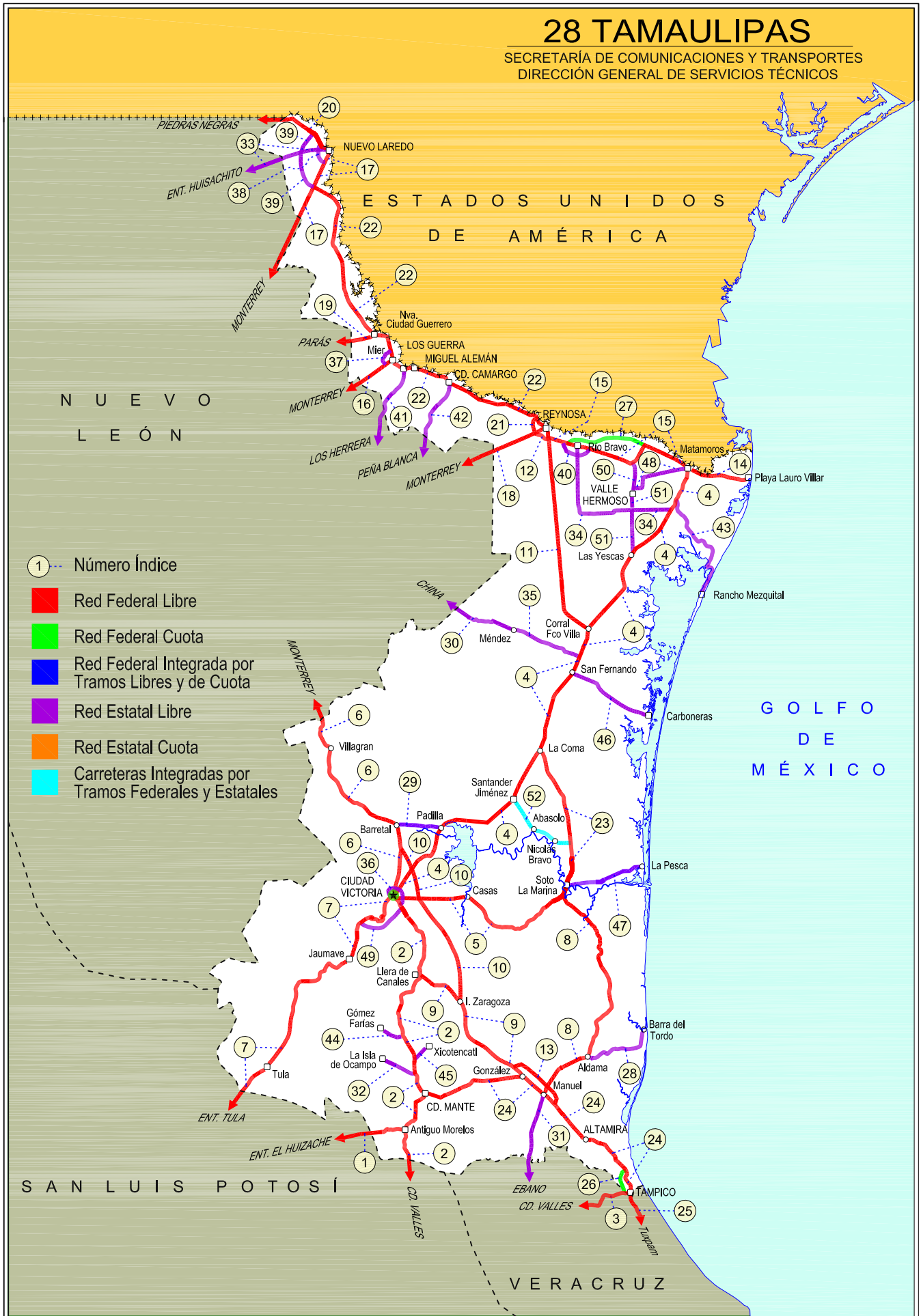


TAMAULIPAS

NO. INDICE	CARRETERA	ruta
---RED FEDERAL LIBRE---		
1	Antiguo Morelos - Ent. El Huizache	MEX-080
2	Cd. Valles - Cd. Victoria	MEX-085
3	Cd. Valles - Tampico	MEX-070
4	Cd. Victoria - Matamoros	MEX-101-180
5	Cd. Victoria - Soto La Marina	MEX-070
6	Ciudad Victoria - Monterrey	MEX-085
7	Ent. Tula - Cd. Victoria	MEX-101
8	Estación Manuel - T. C. (Cd. Victoria - Soto La Marina)	MEX-180
9	González - Llera de Canales	MEX-081
10	Ignacio Zaragoza - T. C. (Ciudad Victoria - Monterrey)	MEX-083
11	Las Urracas - T. C. (Matamoros - Reynosa)	MEX-097
12	Libramiento de Reynosa	MEX-040
13	Libramiento Estación Manuel - González	MEX-085
14	Matamoros - Playa Lauro Villar	MEX-002
15	Matamoros - Reynosa	MEX-002
16	Monterrey - Mier	MEX-054
17	Monterrey - Nuevo Laredo (Libre)	MEX-085
18	Monterrey - Reynosa (Libre)	MEX-040
19	Paras - Nueva Ciudad Guerrero	MEX-030
20	Piedras Negras - Nuevo Laredo	MEX-002
21	Ramal de Acceso a Puente Anzaldúas	MEX
22	Reynosa - Nuevo Laredo	MEX-002
23	Soto La Marina - La Coma	MEX-180
24	Tampico - Cd. Mante	MEX-080
25	Túxpam - Tampico	MEX-180
---RED FEDERAL DE CUOTA---		
26	Libramiento Poniente de Tampico (Cuota)	MEX-070D
27	Matamoros - Reynosa (Cuota)	MEX-002D
---RED ESTATAL LIBRE---		
28	Aldama - Barra El Tordo	TAM
29	Barretal - Nueva Villa de Padilla	TAM-001
30	China - Méndez	NL-TAM
31	Ébano - Estación Manuel	SLP-TAM
32	El Limón - Ocampo	TAM-019
33	Ent. Huisachito - Nuevo Laredo	NL-001-TAM
34	Ent. Las Blancas - Río Bravo	TAM-003
35	La Joya - Méndez	TAM
36	Libramiento de Cd. Victoria	TAM
37	Libramiento de Mier	TAMPS
38	Libramiento de Nuevo Laredo	TAM
39	Libramiento de Nuevo Laredo II	TAM
40	Libramiento de Río Bravo	TAM
41	Los Guerra - Los Herreras	TAM-NL
42	Peña Blanca - Cd. Camargo	NL-TAM
43	Potrero Nuevo - Rancho El Mezquital	TAM
44	Ramal a Gómez Farías	TAM-020
45	Ramal a Xicoténcatl	TAM
46	San Fernando - Carboneras	TAM
47	Soto La Marina - La Pesca	TAM-070
48	T. C. (Valle Hermoso - Empalme) - Matamoros	TAM-005
49	T. C. Libramiento Cd. Victoria - San Antonio	TAM-126
50	Valle Hermoso - Empalme	TAM-004
51	Valle Hermoso - Las Yescas	TAM
---CARRETERAS INTEGRADAS POR TRAMOS FEDERALES Y ESTATALES---		
52	Santander Jiménez - Ent. El Ojito	MEX-107-TAM

28 TAMAUULIPAS

SECRETARÍA DE COMUNICACIONES Y TRANSPORTES
DIRECCIÓN GENERAL DE SERVICIOS TÉCNICOS



TAMAULIPAS

1 CARR: Antigua Morelos - Ent. El Huizache

CLAVE: 00136

RUTA: MEX-080

AÑO: 2013

LUGAR	ESTACION				CLASIFICACION VEHICULAR EN PORCIENTO										COORDENADAS					
	KM	TE	SC	TDPA	M	A	B	C2	C3	T3S2	T3S3	T3S2R4	OTROS	A	B	C	K'	D	LATITUD	LONGITUD
Antigua Morelos	0.00	3	0	2332	6.4	77.7	1.6	9.1	1.9	2.0	1.0	0.2	0.1	84.1	1.6	14.3	0.086	0.501	22.554528	-99.103165
Nuevo Morelos	19.28	1	0	1177	4.2	77.2	2.5	9.6	2.1	2.6	1.1	0.3	0.4	81.4	2.5	16.1	0.096	0.500	22.540101	-99.214278
Lim. Edos. Term. Tamps. Ppia. S. L. P.	25.00																			
El Naranjo	32.00	1	0	4166	2.9	79.3	1.7	8.5	2.1	3.5	1.1	0.4	0.5	82.2	1.7	16.1	0.098	0.501	22.529361	-99.312583
El Naranjo	32.00	3	0	1904	2.9	79.1	3.1	8.5	3.1	2.6	0.5	0.1	0.1	82.0	3.1	14.9	0.092	0.506	22.517347	-99.334547
Cd. del Maíz	86.00	3	0	3088	1.3	81.8	3.9	7.2	1.4	3.0	1.2	0.2	0.0	83.1	3.9	13.0	0.075	0.502	22.412500	-99.620056
T. Der. Tula	141.21	3	0	2703	2.6	73.1	3.9	6.8	5.4	4.3	1.0	1.9	1.0	75.7	3.9	20.4	0.065	0.504	22.737667	-99.979167
T. C. San Luis Potosí - Matehuala (Ent. El Huizache)	198.83	1	0	2881	1.5	74.3	2.5	6.1	5.4	5.0	2.1	2.0	1.1	75.8	2.5	21.7	0.081	0.507	22.931167	-100.447500

2 CARR: Cd. Valles - Cd. Victoria

CLAVE: 00509

RUTA: MEX-085

AÑO: 2013

LUGAR	ESTACION				CLASIFICACION VEHICULAR EN PORCIENTO										COORDENADAS					
	KM	TE	SC	TDPA	M	A	B	C2	C3	T3S2	T3S3	T3S2R4	OTROS	A	B	C	K'	D	LATITUD	LONGITUD
Cd. Valles	0.00	3	0	6390	4.4	70.7	3.1	11.1	2.8	3.9	1.8	1.4	0.8	75.1	3.1	21.8	0.060	0.514	22.009472	-99.002500
Lim. Edos. Term. S. L. P. Ppia. Tamps.	50.40																			
Antigua Morelos	66.90	1	0	2668	3.9	73.5	4.1	9.0	2.7	3.5	0.9	2.2	0.2	77.4	4.1	18.5	0.075	0.501	22.547878	-99.078305
Antigua Morelos	66.90	3	0	3697	5.3	72.6	3.4	8.8	2.5	3.9	1.2	1.7	0.6	77.9	3.4	18.7	0.077	0.502	22.559352	-99.078048
Cd. Mante	98.00	1	0	6178	5.1	74.5	3.2	7.2	2.9	3.9	1.0	1.8	0.4	79.6	3.2	17.2	0.073	0.515	22.711674	-98.989227
T. Izq. Ocampo	110.00	3	0	3230	7.2	75.6	0.9	9.2	2.3	2.4	0.6	1.1	0.7	82.8	0.9	16.3	0.072	0.503	22.839055	-99.024421
T. Izq. Gómez Farías	132.84	3	0	1742	7.3	76.5	1.4	8.0	4.4	1.4	0.3	0.1	0.6	83.8	1.4	14.8	0.116	0.506	23.030700	-99.093680
T. Izq. Llera de Canales	170.00	3	0	3990	0.7	85.2	4.1	7.2	0.6	2.0	0.1	0.0	0.1	85.9	4.1	10.0	0.093	0.520	23.310058	-99.018709
T. Der. González	172.50	3	0	2364	0.4	83.3	5.2	7.7	1.4	1.2	0.5	0.2	0.1	83.7	5.2	11.1	0.109	0.502	23.322753	-98.998157
Cd. Victoria	232.00	1	0	2153	0.9	83.7	4.1	6.7	1.4	1.9	0.6	0.4	0.3	84.6	4.1	11.3	0.098	0.504	23.659886	-99.096554

3 CARR: Cd. Valles - Tampico

CLAVE: 00138

RUTA: MEX-070

AÑO: 2013

LUGAR	ESTACION				CLASIFICACION VEHICULAR EN PORCIENTO										COORDENADAS					
	KM	TE	SC	TDPA	M	A	B	C2	C3	T3S2	T3S3	T3S2R4	OTROS	A	B	C	K'	D	LATITUD	LONGITUD
Cd. Valles	0.00	3	0	8555	2.5	66.3	5.1	10.2	5.6	5.6	2.6	1.1	1.0	68.8	5.1	26.1	0.075	0.503	21.975883	-98.963200
T. Der. Santa Elena	15.25	3	0	6530	1.3	67.8	3.7	10.2	6.4	5.1	3.0	1.8	0.7	69.1	3.7	27.2	0.070	0.521	21.959883	-98.880650
Tamuín	29.60	1	0	6147	1.5	67.7	3.3	9.4	5.3	6.2	3.1	2.4	1.1	69.2	3.3	27.5	0.079	0.501	22.000303	-98.782121
Ébano	79.00	1	0	4738	2.0	62.3	4.5	10.9	3.7	7.6	4.0	3.8	1.2	64.3	4.5	31.2	0.084	0.501	22.214333	-98.389183
Ébano	79.00	3	0	4762	2.7	65.1	3.7	11.9	2.4	7.0	2.8	3.5	0.9	67.8	3.7	28.5	0.060	0.506	22.211400	-98.359383
Lim. Edos. Term. S. L. P. Ppia. Ver.	83.57																			
T. Der. Pánuco	103.00	1	0	6283	3.3	66.1	2.0	10.7	5.5	5.9	3.4	2.0	1.1	69.4	2.0	28.6	0.068	0.501	22.156520	-98.153859

TAMAULIPAS

3 CARR: Cd. Valles - Tampico

CLAVE: 00138

RUTA: MEX-070

AÑO: 2013

LUGAR	ESTACION				CLASIFICACION VEHICULAR EN PORCIENTO										COORDENADAS					
	KM	TE	SC	TDPA	M	A	B	C2	C3	T3S2	T3S3	T3S2R4	OTROS	A	B	C	K'	D	LATITUD	LONGITUD
T. Der. Pánuco	103.00	3	0	6416	0.8	60.2	3.5	13.4	9.4	6.0	3.2	2.5	1.0	61.0	3.5	35.5	0.074	0.503	22.158825	-98.149359
T. C. Anáhuac - El Prieto	128.40	1	1	4130	0.5	74.2	2.5	12.7	2.9	3.0	1.7	2.0	0.5	74.7	2.5	22.8	0.085	0.501	22.214183	-97.949848
T. C. Anáhuac - El Prieto	128.40	1	2	4150	0.6	71.0	2.7	14.4	3.4	3.2	2.0	2.2	0.5	71.6	2.7	25.7	0.083	0.501	22.214406	-97.949937
T. C. Anáhuac - El Prieto	128.40	3	1	5882	1.0	68.8	3.0	11.6	2.9	5.9	2.7	3.6	0.5	69.8	3.0	27.2	0.097	0.514	22.217474	-97.936130
T. C. Anáhuac - El Prieto	128.40	3	2	6219	1.2	65.2	3.2	12.7	3.2	6.4	2.9	4.4	0.8	66.4	3.2	30.4	0.093	0.514	22.217674	-97.936224
Lim. Edos. Term. Ver. Ppia. Tamps.	133.81																			
Tampico	138.00	1	1	7941	1.4	76.6	1.9	7.2	2.2	5.0	2.6	2.4	0.7	78.0	1.9	20.1	0.077	0.513	22.226932	-97.893776
Tampico	138.00	1	2	8350	1.7	74.9	2.2	7.5	2.2	5.1	2.8	2.7	0.9	76.6	2.2	21.2	0.073	0.513	22.227064	-97.893818

4 CARR: Cd. Victoria - Matamoros

CLAVE: 28139

RUTA: MEX-101-180

AÑO: 2013

LUGAR	ESTACION				CLASIFICACION VEHICULAR EN PORCIENTO										COORDENADAS					
	KM	TE	SC	TDPA	M	A	B	C2	C3	T3S2	T3S3	T3S2R4	OTROS	A	B	C	K'	D	LATITUD	LONGITUD
Cd. Victoria	0.00																			
X. C. Libramiento de Cd. Victoria	5.00	3	1	6166	2.5	86.1	1.7	5.6	0.9	1.9	0.7	0.4	0.2	88.6	1.7	9.7	0.082	0.509	23.767156	-99.112038
X. C. Libramiento de Cd. Victoria	5.00	3	2	6387	2.9	84.5	1.9	6.3	0.9	2.0	0.9	0.4	0.2	87.4	1.9	10.7	0.095	0.509	23.767241	-99.112122
T. Izq. Barretal	46.50	1	0	5523	0.8	61.8	3.3	6.5	3.0	15.4	3.5	4.7	1.0	62.6	3.3	34.1	0.079	0.502	24.037487	-98.905165
T. Der. Las Juntas	80.05	1	0	4444	0.6	51.7	7.0	7.1	3.8	17.9	3.9	7.0	1.0	52.3	7.0	40.7	0.102	0.518	24.117021	-98.595901
Santander Jiménez	97.00	3	0	4117	1.4	52.7	5.5	7.5	3.0	17.8	4.5	6.6	1.0	54.1	5.5	40.4	0.076	0.505	24.238782	-98.476076
T. Der. Soto La Marina	129.00	3	1	2446	0.2	58.5	7.0	6.8	2.2	14.5	3.6	6.2	1.0	58.7	7.0	34.3	0.120	0.508	24.474917	-98.339701
T. Der. Soto La Marina	129.00	3	2	2527	0.1	52.9	8.1	7.7	2.4	16.5	3.9	7.3	1.1	53.0	8.1	38.9	0.118	0.508	24.474647	-98.339924
San Fernando	175.00	3	0	4882	1.0	56.8	6.8	8.6	2.1	15.2	2.3	6.6	0.6	57.8	6.8	35.4	0.072	0.510	24.863259	-98.139779
T. Izq. Reynosa	202.00	1	0	7358	1.1	56.5	5.3	9.1	3.3	13.7	4.9	5.0	1.1	57.6	5.3	37.1	0.082	0.528	25.058437	-98.070196
Santa Teresa	233.00	1	0	3360	0.6	58.9	5.6	10.5	3.3	9.2	4.4	6.9	0.6	59.5	5.6	34.9	0.079	0.518	25.274489	-97.862269
T. Izq. Valle Hermoso	254.50	1	0	3757	0.7	59.3	5.8	11.1	3.4	8.8	4.3	5.6	1.0	60.0	5.8	34.2	0.088	0.514	25.443155	-97.820552
T. Izq. Jarita	286.00	3	1	2142	0.3	75.6	3.5	10.1	1.2	5.0	1.4	2.5	0.4	75.9	3.5	20.6	0.102	0.528	25.668622	-97.599601
T. Izq. Jarita	286.00	3	2	2398	0.4	73.8	3.8	10.4	1.3	5.8	1.4	2.6	0.5	74.2	3.8	22.0	0.095	0.528	25.668421	-97.599914
Matamoros	312.00	1	1	7386	1.3	74.7	3.3	10.2	1.4	5.0	1.5	1.8	0.8	76.0	3.3	20.7	0.066	0.511	25.786134	-97.530772
Matamoros	312.00	1	2	7732	1.2	73.1	3.7	10.5	1.5	5.4	1.6	2.1	0.9	74.3	3.7	22.0	0.064	0.511	25.786203	-97.530956

5 CARR: Cd. Victoria - Soto La Marina

CLAVE: 28009

RUTA: MEX-070

AÑO: 2013

LUGAR	ESTACION				CLASIFICACION VEHICULAR EN PORCIENTO										COORDENADAS					
	KM	TE	SC	TDPA	M	A	B	C2	C3	T3S2	T3S3	T3S2R4	OTROS	A	B	C	K'	D	LATITUD	LONGITUD
Cd. Victoria	0.00	3	1	10757	2.1	80.7	3.5	8.3	2.8	1.4	0.5	0.6	0.1	82.8	3.5	13.7	0.131	0.500	23.718969	-99.091725

TAMAULIPAS

5 CARR: Cd. Victoria - Soto La Marina

CLAVE: 28009

RUTA: MEX-070

AÑO: 2013

LUGAR	ESTACION				CLASIFICACION VEHICULAR EN PORCIENTO														COORDENADAS	
	KM	TE	SC	TDPA	M	A	B	C2	C3	T3S2	T3S3	T3S2R4	OTROS	A	B	C	K'	D	LATITUD	LONGITUD
Cd. Victoria	0.00	3	2	10752	3.0	78.2	4.1	8.9	3.0	1.6	0.5	0.6	0.1	81.2	4.1	14.7	0.129	0.500	23.719232	-99.091531
Soto La Marina	116.80	1	0	3366	1.0	70.6	4.0	14.2	2.0	5.0	1.6	1.0	0.6	71.6	4.0	24.4	0.084	0.517	23.758803	-98.207182

6 CARR: Ciudad Victoria - Monterrey

CLAVE: 00462

RUTA: MEX-085

AÑO: 2013

LUGAR	ESTACION				CLASIFICACION VEHICULAR EN PORCIENTO														COORDENADAS	
	KM	TE	SC	TDPA	M	A	B	C2	C3	T3S2	T3S3	T3S2R4	OTROS	A	B	C	K'	D	LATITUD	LONGITUD
Cd. Victoria	0.00	3	1	8111	0.7	73.2	2.9	5.2	2.3	6.9	4.5	4.1	0.2	73.9	2.9	23.2	0.091	0.510	23.776719	-99.136918
Cd. Victoria	0.00	3	2	7787	0.6	72.4	3.2	5.0	2.0	6.1	5.2	5.3	0.2	73.0	3.2	23.8	0.105	0.510	23.776722	-99.137084
T. Der. Güemez	19.60	3	0	6078	0.8	70.1	3.7	7.6	2.2	4.0	5.0	6.0	0.6	70.9	3.7	25.4	0.106	0.502	23.917096	-99.112051
T. Izq. Santa Engracia	27.35	3	0	7227	0.3	65.9	3.6	8.3	3.0	7.9	3.2	7.0	0.8	66.2	3.6	30.2	0.070	0.505	23.990537	-99.111250
Barretal	39.00	3	0	6570	0.8	61.9	4.0	8.1	3.6	8.7	3.9	7.8	1.2	62.7	4.0	33.3	0.068	0.512	24.090404	-99.136503
T. Izq. Hidalgo y La Mesa	77.50	1	0	5382	0.6	59.7	4.8	8.3	3.6	9.1	3.9	9.2	0.8	60.3	4.8	34.9	0.080	0.506	24.244533	-99.425922
Villagrán	106.00	1	0	5068	0.6	56.1	5.4	9.7	3.8	9.6	4.3	9.5	1.0	56.7	5.4	37.9	0.069	0.507	24.463910	-99.496431
T. Izq. Villa Mainero	118.00	3	0	5146	0.8	52.2	5.4	10.2	4.1	11.6	3.9	10.9	0.9	53.0	5.4	41.6	0.075	0.508	24.572321	-99.546916
Lim. Edos. Term. Tamps. Ppia. N. L.	126.20																			
Linares	154.00	1	0	7202	1.8	54.7	3.9	12.2	3.1	10.5	3.7	9.2	0.9	56.5	3.9	39.6	0.081	0.504	24.837809	-99.560149
La Laja	171.00	3	1	5043	1.3	62.0	5.7	9.9	3.2	7.4	3.1	6.5	0.9	63.3	5.7	31.0	0.068	0.501	24.922908	-99.688791
La Laja	171.00	3	2	5071	1.7	58.2	6.3	11.1	3.5	7.7	3.4	7.3	0.8	59.9	6.3	33.8	0.064	0.501	24.922914	-99.688733
Montemorelos	205.00	3	1	7879	1.4	81.7	3.6	4.8	2.2	2.6	1.8	1.1	0.8	83.1	3.6	13.3	0.084	0.502	25.198237	-99.900614
Montemorelos	205.00	3	2	7947	0.9	80.4	4.1	5.3	2.4	2.7	2.1	1.3	0.8	81.3	4.1	14.6	0.092	0.502	25.198182	-99.900621
Allende	227.45	3	1	11179	1.5	78.0	5.4	6.3	2.7	2.8	1.6	1.3	0.4	79.5	5.4	15.1	0.086	0.502	25.291533	-100.046243
Allende	227.45	3	2	11284	0.9	76.9	5.7	6.9	3.1	2.9	1.7	1.5	0.4	77.8	5.7	16.5	0.092	0.502	25.291300	-100.046274
El Cercado	249.00	1	1	19389	0.8	80.5	4.5	6.6	1.7	2.8	1.1	1.7	0.3	81.3	4.5	14.2	0.083	0.501	25.397428	-100.125943
El Cercado	249.00	1	2	19313	1.7	77.6	4.7	7.3	1.9	3.3	1.3	1.9	0.3	79.3	4.7	16.0	0.086	0.501	25.397299	-100.126015
T. Der. Las Huertas	257.00	3	1	20462	0.7	83.8	3.2	5.2	1.5	2.5	1.3	1.3	0.5	84.5	3.2	12.3	0.096	0.501	25.467248	-100.173602
T. Der. Las Huertas	257.00	3	2	20526	0.6	82.6	3.2	5.9	1.7	2.6	1.4	1.5	0.5	83.2	3.2	13.6	0.129	0.501	25.467151	-100.173718
T. Izq. el Barro	266.00	3	1	23766	0.6	82.9	3.8	5.0	1.9	2.3	1.5	1.3	0.7	83.5	3.8	12.7	0.093	0.500	25.531212	-100.213325
T. Izq. el Barro	266.00	3	2	23725	1.1	80.3	4.1	5.9	2.1	2.5	1.7	1.5	0.8	81.4	4.1	14.5	0.093	0.500	25.530918	-100.213314
La Estanzuela	274.82	3	1	44181	1.0	80.2	3.0	6.2	2.3	2.7	2.0	1.8	0.8	81.2	3.0	15.8	0.111	0.502	25.590271	-100.259526
La Estanzuela	274.82	3	2	44621	1.2	78.1	3.2	6.8	2.5	3.2	2.3	1.9	0.8	79.3	3.2	17.5	0.077	0.502	25.589983	-100.259676
Monterrey (Alta)	287.00	1	1	40684	0.4	84.4	2.6	3.8	0.8	2.8	3.2	1.2	0.8	84.8	2.6	12.6	0.061	0.507	25.602305	-100.266240
Monterrey (Baja)	287.00	1	1	21826	1.6	80.5	3.9	6.4	1.2	2.0	2.4	1.3	0.7	82.1	3.9	14.0	0.080	0.502	25.602315	-100.266187
Monterrey (Baja)	287.00	1	2	21672	1.1	79.8	4.3	6.7	1.3	2.0	2.6	1.4	0.8	80.9	4.3	14.8	0.076	0.502	25.601514	-100.266300
Monterrey (Alta)	287.00	1	2	39502	0.5	82.6	3.0	4.2	0.8	3.0	3.6	1.4	0.9	83.1	3.0	13.9	0.063	0.507	25.601474	-100.266192

TAMAULIPAS

7 CARR: Ent. Tula - Cd. Victoria

CLAVE: 00179

RUTA: MEX-101

AÑO: 2013

LUGAR	ESTACION				CLASIFICACION VEHICULAR EN PORCIENTO														COORDENADAS	
	KM	TE	SC	TDPA	M	A	B	C2	C3	T3S2	T3S3	T3S2R4	OTROS	A	B	C	K'	D	LATITUD	LONGITUD
T. C. Antiguo Morelos - El Huizache	0.00	3	0	3050	2.7	79.1	3.7	4.2	3.3	3.4	1.6	1.9	0.1	81.8	3.7	14.5	0.070	0.509	22.737444	-99.968389
Lim. Edos. Term. S. L. P. Ppia. Tamps.	2.40																			
T. Der. Tula (1º Acceso)	38.00	1	0	4255	1.2	48.3	3.8	8.3	3.1	15.3	6.1	12.9	1.0	49.5	3.8	46.7	0.060	0.507	22.982944	-99.736180
T. Der. Tula (2º Acceso)	41.95	3	0	3643	1.0	44.8	4.8	11.0	2.9	16.7	5.2	12.6	1.0	45.8	4.8	49.4	0.077	0.514	23.020297	-99.714532
Jaumave	112.68	1	0	4533	0.9	52.5	3.3	7.8	2.0	14.8	5.3	12.4	1.0	53.4	3.3	43.3	0.057	0.507	23.400242	-99.401906
Jaumave	112.68	3	0	4716	0.6	52.3	3.6	7.4	2.3	13.6	5.5	13.9	0.8	52.9	3.6	43.5	0.055	0.515	23.418927	-99.373662
Cd. Victoria	180.00	1	1	3376	9.6	83.3	0.2	5.5	0.5	0.5	0.2	0.1	0.1	92.9	0.2	6.9	0.100	0.504	23.710901	-99.176020
Cd. Victoria	180.00	1	2	3328	8.6	83.6	0.2	6.3	0.4	0.5	0.2	0.1	0.1	92.2	0.2	7.6	0.081	0.504	23.710972	-99.176143

8 CARR: Estación Manuel - T. C. (Cd. Victoria - Soto La Marina)

CLAVE: 28294

RUTA: MEX-180

AÑO: 2013

LUGAR	ESTACION				CLASIFICACION VEHICULAR EN PORCIENTO														COORDENADAS	
	KM	TE	SC	TDPA	M	A	B	C2	C3	T3S2	T3S3	T3S2R4	OTROS	A	B	C	K'	D	LATITUD	LONGITUD
Estación Manuel	0.00	3	0	2198	0.8	70.1	5.0	12.8	3.1	5.1	2.0	0.8	0.3	70.9	5.0	24.1	0.083	0.511	22.762702	-98.309866
T. Der. Aldama	36.00	3	0	3868	2.5	73.3	3.3	12.0	1.3	5.0	1.4	0.7	0.5	75.8	3.3	20.9	0.083	0.524	22.936272	-98.077571
Esperanza	69.00	3	0	2253	0.9	67.5	6.2	13.2	2.0	6.6	2.3	1.1	0.2	68.4	6.2	25.4	0.073	0.529	23.179286	-97.952337
San José de Las Rusias	116.25	3	0	1737	1.2	56.5	5.8	20.2	3.1	6.6	4.0	1.8	0.8	57.7	5.8	36.5	0.083	0.509	23.561705	-98.042387
Estación Manuel - T. C. (Cd. Victoria - S. La Marina)	145.00	1	0	1902	0.5	63.8	6.5	15.9	2.8	7.0	2.2	1.0	0.3	64.3	6.5	29.2	0.089	0.527	23.726646	-98.218426

9 CARR: González - Llera de Canales

CLAVE: 28578

RUTA: MEX-081

AÑO: 2013

LUGAR	ESTACION				CLASIFICACION VEHICULAR EN PORCIENTO														COORDENADAS	
	KM	TE	SC	TDPA	M	A	B	C2	C3	T3S2	T3S3	T3S2R4	OTROS	A	B	C	K'	D	LATITUD	LONGITUD
González	0.00	3	0	4665	1.1	69.7	1.9	3.1	2.3	9.8	7.0	4.2	0.9	70.8	1.9	27.3	0.093	0.512	22.855587	-98.467628
Estación Ignacio Zaragoza	58.50	1	0	5038	1.0	65.6	3.7	4.3	3.2	10.4	5.6	5.2	1.0	66.6	3.7	29.7	0.066	0.502	23.171513	-98.770323
T. C. Cd. Valles - Cd. Victoria	89.00	1	0	1999	1.3	84.6	4.6	5.6	0.8	1.9	0.1	0.8	0.3	85.9	4.6	9.5	0.106	0.503	23.315940	-98.990814

10 CARR: Ignacio Zaragoza - T. C. (Ciudad Victoria - Monterrey)

CLAVE: 28625

RUTA: MEX-083

AÑO: 2013

LUGAR	ESTACION				CLASIFICACION VEHICULAR EN PORCIENTO														COORDENADAS	
	KM	TE	SC	TDPA	M	A	B	C2	C3	T3S2	T3S3	T3S2R4	OTROS	A	B	C	K'	D	LATITUD	LONGITUD
T. C. González - Llera de Canales	0.00	3	0	3461	1.5	49.6	3.1	4.9	4.4	13.8	5.7	16.1	0.9	51.1	3.1	45.8	0.071	0.504	23.208016	-98.787006
T. C. Ciudad Victoria - Monterrey	94.30	1	0	2814	0.9	44.7	3.8	4.5	5.8	14.4	6.8	17.8	1.3	45.6	3.8	50.6	0.077	0.502	23.955344	-99.100026

TAMAULIPAS

11 CARR: Las Urracas - T. C. (Matamoros - Reynosa)

CLAVE: 28029

RUTA: MEX-097

AÑO: 2013

LUGAR	ESTACION				CLASIFICACION VEHICULAR EN PORCIENTO														COORDENADAS	
	KM	TE	SC	TDPA	M	A	B	C2	C3	T3S2	T3S3	T3S2R4	OTROS	A	B	C	K'	D	LATITUD	LONGITUD
T. C. Cd. Victoria - Matamoros	0.00	3	0	2681	0.4	61.8	5.0	9.4	4.2	8.7	5.4	4.1	1.0	62.2	5.0	32.8	0.113	0.504	25.077973	-98.078033
La Nutria	41.00	1	0	2874	0.3	58.8	5.2	9.2	3.0	12.4	5.7	4.5	0.9	59.1	5.2	35.7	0.089	0.521	25.390287	-98.219141
Santo Domingo	91.50	1	0	3494	0.2	56.6	4.4	14.3	1.7	14.8	4.4	2.9	0.7	56.8	4.4	38.8	0.080	0.521	25.827311	-98.259402
T. C. Matamoros - Reynosa	113.25	1	1	3423	1.9	68.6	3.2	14.3	2.7	5.3	2.4	0.7	0.9	70.5	3.2	26.3	0.078	0.500	25.976070	-98.273544
T. C. Matamoros - Reynosa	113.25	1	2	3419	0.8	65.9	3.6	16.2	3.0	6.2	2.6	0.8	0.9	66.7	3.6	29.7	0.080	0.500	25.976151	-98.273761

12 CARR: Libramiento de Reynosa

CLAVE: 28008

RUTA: MEX-040

AÑO: 2013

LUGAR	ESTACION				CLASIFICACION VEHICULAR EN PORCIENTO														COORDENADAS	
	KM	TE	SC	TDPA	M	A	B	C2	C3	T3S2	T3S3	T3S2R4	OTROS	A	B	C	K'	D	LATITUD	LONGITUD
T. C. Matamoros - Reynosa	0.00	3	1	23870	1.0	83.7	1.7	5.0	1.2	3.9	1.9	0.8	0.8	84.7	1.7	13.6	0.080	0.506	26.043738	-98.298433
T. C. Matamoros - Reynosa	0.00	3	2	23305	1.2	81.2	2.0	5.6	1.4	4.5	2.2	0.9	1.0	82.4	2.0	15.6	0.079	0.506	26.043215	-98.298144
T. C. Monterrey - Reynosa	10.00	1	1	25115	0.5	84.1	1.2	7.6	0.9	2.7	1.5	0.7	0.8	84.6	1.2	14.2	0.087	0.506	26.048389	-98.350994
T. C. Monterrey - Reynosa	10.00	1	2	25712	0.7	82.8	1.3	8.0	1.1	2.9	1.7	0.7	0.8	83.5	1.3	15.2	0.082	0.506	26.048552	-98.351004

13 CARR: Libramiento Estación Manuel - González

CLAVE: 28002

RUTA: MEX-085

AÑO: 2013

LUGAR	ESTACION				CLASIFICACION VEHICULAR EN PORCIENTO														COORDENADAS	
	KM	TE	SC	TDPA	M	A	B	C2	C3	T3S2	T3S3	T3S2R4	OTROS	A	B	C	K'	D	LATITUD	LONGITUD
T. C. Tampico - Cd. Mante	0.00	3	0	3470	1.5	51.8	3.5	6.9	4.8	12.1	6.8	11.6	1.0	53.3	3.5	43.2	0.065	0.503	22.714448	-98.288200
T. C. Tampico - Cd. Mante	24.80	1	0	4251	1.0	49.4	4.3	8.3	3.0	11.2	6.7	15.0	1.1	50.4	4.3	45.3	0.071	0.503	22.845047	-98.437714

14 CARR: Matamoros - Playa Lauro Villar

CLAVE: 28078

RUTA: MEX-002

AÑO: 2013

LUGAR	ESTACION				CLASIFICACION VEHICULAR EN PORCIENTO														COORDENADAS	
	KM	TE	SC	TDPA	M	A	B	C2	C3	T3S2	T3S3	T3S2R4	OTROS	A	B	C	K'	D	LATITUD	LONGITUD
Matamoros	0.00	3	1	6946	1.5	84.4	2.4	4.2	1.3	2.2	2.5	0.7	0.8	85.9	2.4	11.7	0.083	0.504	25.837382	-97.438634
Matamoros	0.00	3	2	7059	1.7	83.5	2.7	4.4	1.4	2.2	2.5	0.7	0.9	85.2	2.7	12.1	0.081	0.504	25.837599	-97.438590
Playa Lauro Villar	37.00																			

15 CARR: Matamoros - Reynosa

CLAVE: 28077

RUTA: MEX-002

AÑO: 2013

LUGAR	ESTACION				CLASIFICACION VEHICULAR EN PORCIENTO														COORDENADAS	
	KM	TE	SC	TDPA	M	A	B	C2	C3	T3S2	T3S3	T3S2R4	OTROS	A	B	C	K'	D	LATITUD	LONGITUD
Matamoros	0.00	3	0	10644	1.0	80.4	2.7	6.7	2.2	3.6	1.2	1.3	0.9	81.4	2.7	15.9	0.093	0.516	25.921056	-97.581306

TAMAULIPAS

15 CARR: Matamoros - Reynosa

CLAVE: 28077

RUTA: MEX-002

AÑO: 2013

LUGAR	ESTACION				CLASIFICACION VEHICULAR EN PORCIENTO													COORDENADAS		
	KM	TE	SC	TDPA	M	A	B	C2	C3	T3S2	T3S3	T3S2R4	OTROS	A	B	C	K'	D	LATITUD	LONGITUD
Empalme	38.00	1	0	5727	0.5	80.3	1.4	9.1	1.4	3.8	1.2	1.6	0.7	80.8	1.4	17.8	0.069	0.502	25.921332	-97.786065
T. Der. Nuevo Progreso	57.00	1	0	4875	0.3	72.5	1.8	11.1	2.1	6.6	2.0	2.9	0.7	72.8	1.8	25.4	0.071	0.509	25.949346	-97.968717
Río Bravo	67.00	1	0	8224	0.7	76.3	1.3	12.8	1.7	3.9	1.3	1.6	0.4	77.0	1.3	21.7	0.068	0.513	25.971078	-98.041800
Río Bravo	67.00	3	1	9578	0.7	79.9	2.3	9.7	1.3	2.9	1.5	0.8	0.9	80.6	2.3	17.1	0.106	0.504	25.997467	-98.134616
Río Bravo	67.00	3	2	9746	0.6	78.3	2.5	10.5	1.4	3.2	1.6	0.9	1.0	78.9	2.5	18.6	0.102	0.504	25.997258	-98.134659
T. Izq. Aeropuerto	85.65	3	1	30239	2.0	80.7	1.8	8.2	1.1	3.4	1.6	0.6	0.6	82.7	1.8	15.5	0.114	0.513	26.020636	-98.229953
T. Izq. Aeropuerto	85.65	3	2	28715	0.6	80.5	2.1	9.0	1.2	3.5	1.9	0.6	0.6	81.1	2.1	16.8	0.110	0.513	26.020483	-98.230041
Reynosa	98.00	1	1	33412	1.2	83.9	2.1	6.1	0.8	2.5	1.9	0.5	1.0	85.1	2.1	12.8	0.081	0.509	26.035060	-98.271552
Reynosa	98.00	1	2	34645	0.7	83.1	2.4	6.5	0.9	2.7	2.2	0.5	1.0	83.8	2.4	13.8	0.068	0.509	26.034546	-98.271380

16 CARR: Monterrey - Mier

CLAVE: 00127

RUTA: MEX-054

AÑO: 2013

LUGAR	ESTACION				CLASIFICACION VEHICULAR EN PORCIENTO													COORDENADAS		
	KM	TE	SC	TDPA	M	A	B	C2	C3	T3S2	T3S3	T3S2R4	OTROS	A	B	C	K'	D	LATITUD	LONGITUD
Monterrey	0.00																			
Apodaca	19.12	1	1	53173	0.4	84.4	2.8	4.9	0.9	2.6	2.6	0.8	0.6	84.8	2.8	12.4	0.070	0.501	25.749549	-100.200448
Apodaca	19.12	1	2	53055	0.8	83.1	3.0	5.0	1.0	2.9	2.8	0.8	0.6	83.9	3.0	13.1	0.073	0.501	25.749303	-100.200987
X. C. Libramiento Noroeste de Monterrey	21.30	3	1	37508	0.8	80.8	2.7	7.5	2.3	3.1	1.3	0.8	0.7	81.6	2.7	15.7	0.103	0.510	25.784737	-100.159446
X. C. Libramiento Noroeste de Monterrey	21.30	3	2	36026	1.1	79.0	2.9	8.3	2.3	3.3	1.4	1.0	0.7	80.1	2.9	17.0	0.082	0.510	25.784857	-100.159620
X. C. Zacatecas - Pesquería	28.15	1	1	9567	1.0	79.7	2.5	8.5	2.8	2.4	1.5	1.1	0.5	80.7	2.5	16.8	0.084	0.503	25.799378	-100.101455
X. C. Zacatecas - Pesquería	28.15	1	2	9438	1.3	77.8	2.9	8.9	3.1	2.7	1.6	1.2	0.5	79.1	2.9	18.0	0.080	0.503	25.799462	-100.101542
X. C. Zacatecas - Pesquería	28.15	3	0	6485	1.2	78.0	1.9	9.0	3.2	3.2	1.3	1.8	0.4	79.2	1.9	18.9	0.080	0.513	25.806851	-100.092922
X. C. Hacienda Guadalupe - Higuera	38.10	1	0	4834	1.3	74.7	2.3	8.6	3.6	3.9	2.3	2.7	0.6	76.0	2.3	21.7	0.070	0.513	25.854382	-100.025451
X. C. Hacienda Guadalupe - Higuera	38.10	3	0	4051	0.5	78.6	1.2	9.9	2.2	3.5	1.3	2.5	0.3	79.1	1.2	19.7	0.084	0.509	25.854624	-100.017169
Dr. González	47.60	1	0	3159	0.9	76.9	2.7	9.6	2.1	3.4	1.4	2.5	0.5	77.8	2.7	19.5	0.085	0.506	25.851066	-99.966897
Dr. González	47.60	3	0	1854	1.2	77.8	2.8	7.8	2.1	3.5	1.9	2.7	0.2	79.0	2.8	18.2	0.079	0.507	25.867095	-99.933108
T. Der. Empalme Los Ramones	74.10	1	0	1718	2.7	79.9	2.8	3.7	0.7	3.9	2.6	2.7	1.0	82.6	2.8	14.6	0.093	0.502	25.924659	-99.720712
Cerralvo	95.95	1	0	2636	0.5	68.0	3.3	10.7	1.7	3.1	2.1	10.1	0.5	68.5	3.3	28.2	0.083	0.506	26.069751	-99.626073
Gral. Treviño	115.80	3	0	2616	0.4	56.5	2.2	8.5	1.1	7.0	3.7	20.0	0.6	56.9	2.2	40.9	0.081	0.501	26.230846	-99.472562
Lim. Edos. Term. N. L. Ppia. Tamps.	131.80																			
Mier	156.21	1	0	2147	0.5	52.9	2.1	9.1	2.6	7.6	4.1	20.6	0.5	53.4	2.1	44.5	0.080	0.507	26.426400	-99.164607

TAMAULIPAS

17 C A R R : Monterrey - Nuevo Laredo (Libre)

CLAVE: 00463

RUTA: MEX-085

AÑO: 2013

L U G A R	E S T A C I O N				C L A S I F I C A C I O N V E H I C U L A R E N P O R C I E N T O										C O O R D E N A D A S					
	KM	TE	SC	TDPA	M	A	B	C2	C3	T3S2	T3S3	T3S2R4	OTROS	A	B	C	K'	D	LATITUD	LONGITUD
Monterrey	0.00																			
T. Izq. Gral. Escobedo	12.10	3	1	29981	1.4	79.4	2.5	8.3	1.5	2.9	2.2	1.0	0.8	80.8	2.5	16.7	0.078	0.501	25.795195	-100.279434
T. Izq. Gral. Escobedo	12.10	3	2	30085	1.8	77.2	2.8	8.8	1.7	3.2	2.6	1.1	0.8	79.0	2.8	18.2	0.074	0.501	25.795177	-100.279622
X. C. Libramiento Noroeste de Monterrey	16.00	1	1	26306	1.3	79.2	2.7	7.3	1.9	3.7	2.6	0.5	0.8	80.5	2.7	16.8	0.077	0.500	25.824116	-100.262343
X. C. Libramiento Noroeste de Monterrey	16.00	1	2	26268	0.8	77.9	3.1	7.9	2.1	4.0	2.6	0.6	1.0	78.7	3.1	18.2	0.082	0.500	25.824252	-100.262494
X. C. Libramiento Noroeste de Monterrey	16.00	3	1	36368	2.0	69.6	2.3	8.1	3.3	8.7	3.3	1.9	0.8	71.6	2.3	26.1	0.066	0.507	25.835777	-100.254272
X. C. Libramiento Noroeste de Monterrey	16.00	3	2	37384	1.8	68.0	2.6	8.4	3.6	9.1	3.7	2.0	0.8	69.8	2.6	27.6	0.077	0.507	25.837634	-100.253103
X. C. Santa Rosa - Salinas Victoria	20.19	3	1	27383	1.6	74.7	2.2	7.1	3.5	7.2	1.6	1.4	0.7	76.3	2.2	21.5	0.066	0.502	25.861519	-100.236327
X. C. Santa Rosa - Salinas Victoria	20.19	3	2	27630	1.2	72.5	2.5	7.9	3.8	8.2	1.6	1.5	0.8	73.7	2.5	23.8	0.072	0.502	25.861575	-100.236430
Ciénega de Flores	32.00	1	0	17389	1.7	69.7	4.1	9.1	3.4	8.8	2.0	0.4	0.8	71.4	4.1	24.5	0.073	0.501	25.944021	-100.176639
T. Der. Agualeguas	78.23	3	0	5029	0.5	50.2	3.4	10.9	3.4	27.7	1.8	1.2	0.9	50.7	3.4	45.9	0.070	0.513	26.331664	-100.110480
Sabinas Hidalgo	98.90	3	0	4793	4.3	44.5	3.3	14.8	4.3	25.4	1.6	1.0	0.8	48.8	3.3	47.9	0.062	0.529	26.534106	-100.148956
Vallecillos	124.40	3	0	3775	2.5	43.4	4.0	14.9	4.5	25.1	2.6	1.7	1.3	45.9	4.0	50.1	0.060	0.536	26.664369	-99.978569
T. Izq. Anáhuac	156.80	1	0	3494	1.1	46.1	3.4	13.2	4.4	26.5	2.5	1.7	1.1	47.2	3.4	49.4	0.056	0.534	26.872998	-99.832897
T. Izq. Anáhuac	156.80	3	1	6699	1.6	46.2	3.7	7.4	2.9	34.4	1.5	1.3	1.0	47.8	3.7	48.5	0.086	0.516	26.901091	-99.811143
T. Izq. Anáhuac	156.80	3	2	7110	1.2	41.9	4.4	8.4	3.2	37.1	1.4	1.5	0.9	43.1	4.4	52.5	0.085	0.516	26.901072	-99.811161
Lim. Edos. Term. N. L. Ppia. Tamps.	184.56																			
T. Der. Mier	205.90	1	1	7829	2.2	54.2	4.4	7.5	3.3	23.4	2.2	1.9	0.9	56.4	4.4	39.2	0.076	0.517	27.293367	-99.602544
T. Der. Mier	205.90	1	2	7326	1.2	50.1	5.2	8.2	3.7	26.3	2.4	1.9	1.0	51.3	5.2	43.5	0.095	0.517	27.293364	-99.602540
T. Der. Mier	205.90	3	1	6251	2.0	57.0	3.0	6.4	4.6	23.4	1.6	1.0	1.0	59.0	3.0	38.0	0.092	0.512	27.307417	-99.595171
T. Der. Mier	205.90	3	2	6566	1.1	52.2	3.5	7.5	5.1	26.8	1.6	1.1	1.1	53.3	3.5	43.2	0.075	0.512	27.307420	-99.595174
Nuevo Laredo	228.00	1	1	9628	1.7	63.9	2.9	9.4	4.4	15.0	1.2	0.6	0.9	65.6	2.9	31.5	0.079	0.507	27.380191	-99.556090
Nuevo Laredo	228.00	1	2	9888	3.2	59.0	3.1	10.0	4.8	16.9	1.3	0.6	1.1	62.2	3.1	34.7	0.072	0.507	27.380177	-99.556081

18 C A R R : Monterrey - Reynosa (Libre)

CLAVE: 00088

RUTA: MEX-040

AÑO: 2013

L U G A R	E S T A C I O N				C L A S I F I C A C I O N V E H I C U L A R E N P O R C I E N T O										C O O R D E N A D A S					
	KM	TE	SC	TDPA	M	A	B	C2	C3	T3S2	T3S3	T3S2R4	OTROS	A	B	C	K'	D	LATITUD	LONGITUD
T. C. Monterrey - Mier	0.00																			
Villa Juárez	19.10	1	1	10534	1.4	84.6	2.2	4.7	0.8	1.8	2.7	1.0	0.8	86.0	2.2	11.8	0.074	0.516	25.651613	-100.105815
Villa Juárez	19.10	1	2	9899	1.3	83.4	2.4	4.9	1.0	2.0	3.1	1.0	0.9	84.7	2.4	12.9	0.075	0.516	25.651696	-100.105768
Villa Juárez	19.10	3	1	12385	2.3	82.3	2.5	4.3	1.6	3.1	2.1	1.0	0.8	84.6	2.5	12.9	0.064	0.501	25.631239	-100.075828
Villa Juárez	19.10	3	2	12344	2.6	80.6	2.7	4.6	1.7	3.5	2.4	1.1	0.8	83.2	2.7	14.1	0.061	0.501	25.631142	-100.075928
Puente Cadereyta	30.50	2	1	1992	0.4	64.1	0.4	7.7	4.8	13.0	2.3	2.5	4.8	64.5	0.4	35.1	0.091	0.500	25.601076	-100.005752
Puente Cadereyta	30.50	2	2	1992	0.4	64.1	0.4	7.7	4.8	13.0	2.3	2.5	4.8	64.5	0.4	35.1	0.091	0.500	25.601076	-100.005752

TAMAULIPAS

18 CARR: Monterrey - Reynosa (Libre)

CLAVE: 00088

RUTA: MEX-040

AÑO: 2013

LUGAR	ESTACION				CLASIFICACION VEHICULAR EN PORCIENTO										COORDENADAS					
	KM	TE	SC	TDPA	M	A	B	C2	C3	T3S2	T3S3	T3S2R4	OTROS	A	B	C	K'	D	LATITUD	LONGITUD
Refinería de Cadereyta	33.00	3	0	5472	0.8	69.3	2.7	8.7	2.9	8.6	3.3	2.9	0.8	70.1	2.7	27.2	0.081	0.509	25.594391	-99.921804
T. Izq. Los Ramones	68.78	3	0	2586	0.3	69.6	2.5	9.3	3.1	8.5	3.7	2.4	0.6	69.9	2.5	27.6	0.088	0.520	25.620768	-99.625642
Gral. Bravo	125.00	1	0	4310	0.3	62.0	2.5	16.1	2.6	10.3	3.0	2.5	0.7	62.3	2.5	35.2	0.073	0.510	25.778918	-99.187867
Lim. Edos. Term. N. L. Ppia. Tamps.	192.00																			
T. Izq. Díaz Ordáz	192.55	1	1	4333	0.2	69.9	3.0	9.1	2.5	8.7	2.7	3.0	0.9	70.1	3.0	26.9	0.090	0.502	25.967536	-98.594039
T. Izq. Díaz Ordáz	192.55	1	2	4364	0.4	66.4	3.4	10.7	2.8	8.8	3.1	3.4	1.0	66.8	3.4	29.8	0.094	0.502	25.967984	-98.594013
Reynosa	225.00	1	1	19192	0.6	80.1	2.3	8.0	1.5	5.1	1.4	0.9	0.1	80.7	2.3	17.0	0.074	0.524	26.042203	-98.401832
Reynosa	225.00	1	2	17424	0.5	78.1	2.7	9.2	1.5	5.2	1.6	1.1	0.1	78.6	2.7	18.7	0.084	0.524	26.042623	-98.402035

19 CARR: Paras - Nueva Ciudad Guerrero

CLAVE: 00476

RUTA: MEX-030

AÑO: 2013

LUGAR	ESTACION				CLASIFICACION VEHICULAR EN PORCIENTO										COORDENADAS					
	KM	TE	SC	TDPA	M	A	B	C2	C3	T3S2	T3S3	T3S2R4	OTROS	A	B	C	K'	D	LATITUD	LONGITUD
Paras	0.00	3	0	241	2.2	72.9	0.8	20.0	1.1	0.5	1.1	1.1	0.3	75.1	0.8	24.1	0.149	0.522	26.502152	-99.515363
Lim. Edos. Term. N. L. Ppia. Tamps.	13.10																			
T. C. Reynosa - (T. C. Monterrey - Nuevo Laredo)	32.00	1	0	190	0.0	66.6	1.7	24.6	1.0	1.7	1.2	3.2	0.0	66.6	1.7	31.7	0.158	0.543	26.555439	-99.244096

20 CARR: Piedras Negras - Nuevo Laredo

CLAVE: 00503

RUTA: MEX-002

AÑO: 2013

LUGAR	ESTACION				CLASIFICACION VEHICULAR EN PORCIENTO										COORDENADAS					
	KM	TE	SC	TDPA	M	A	B	C2	C3	T3S2	T3S3	T3S2R4	OTROS	A	B	C	K'	D	LATITUD	LONGITUD
T. C. Monclova - Piedras Negras	0.00	3	1	3504	1.4	75.8	1.0	12.2	2.8	5.2	0.5	0.8	0.3	77.2	1.0	21.8	0.072	0.530	28.633501	-100.548129
T. C. Monclova - Piedras Negras	0.00	3	2	3953	1.2	74.7	1.0	12.6	3.2	5.6	0.6	0.8	0.3	75.9	1.0	23.1	0.082	0.530	28.633586	-100.547956
El Saucito	16.90	3	0	1229	1.4	61.9	3.2	19.1	2.8	6.7	1.6	2.9	0.4	63.3	3.2	33.5	0.079	0.506	28.501760	-100.467199
T. Der. Villa Unión	37.00	1	0	1154	0.1	64.2	3.7	17.2	2.7	8.3	0.4	3.3	0.1	64.3	3.7	32.0	0.079	0.501	28.338559	-100.390236
T. Der. Villa Unión	37.00	3	0	1106	0.4	59.1	3.8	19.8	3.3	9.1	0.8	3.6	0.1	59.5	3.8	36.7	0.071	0.503	28.333310	-100.388609
Guerrero	42.00	3	0	969	0.3	55.7	4.0	20.0	3.7	10.5	0.6	5.1	0.1	56.0	4.0	40.0	0.085	0.505	28.307662	-100.365208
Lim. Edos. Term. Coah. Ppia. N. L.	124.40																			
T. C. Monclova - Colombia	134.00	3	0	2853	1.4	65.4	3.5	11.8	4.1	9.6	1.2	2.4	0.6	66.8	3.5	29.7	0.093	0.501	27.687546	-99.776335
Lim. Edos. Term. N. L. Ppia. Tamps.	138.20																			
T. Der. Libramiento de Nuevo Laredo	157.70	1	1	4046	0.9	49.5	1.6	5.9	10.3	28.3	1.5	1.0	1.0	50.4	1.6	48.0	0.104	0.520	27.571722	-99.599513
T. Der. Libramiento de Nuevo Laredo	157.70	1	2	4373	1.2	69.8	1.5	11.5	3.9	8.8	1.5	0.9	0.9	71.0	1.5	27.5	0.089	0.520	27.571893	-99.599487
Nuevo Laredo	175.00	1	1	7400	1.1	60.8	2.7	20.6	3.8	7.8	1.4	0.7	1.1	61.9	2.7	35.4	0.090	0.505	27.542866	-99.575980
Nuevo Laredo	175.00	1	2	7269	1.8	57.5	2.7	23.3	4.5	6.5	1.7	0.8	1.2	59.3	2.7	38.0	0.113	0.505	27.542869	-99.575980

TAMAULIPAS

21 CARR: Ramal de Acceso a Puente Anzaldúas

CLAVE: 28619

RUTA: MEX

AÑO: 2013

LUGAR	ESTACION				CLASIFICACION VEHICULAR EN PORCIENTO														COORDENADAS	
	KM	TE	SC	TDPA	M	A	B	C2	C3	T3S2	T3S3	T3S2R4	OTROS	A	B	C	K'	D	LATITUD	LONGITUD
T. C. Monterrey - Reynosa	0.00	3	1	5859	0.3	83.2	1.4	9.9	1.0	1.8	1.0	1.0	0.4	83.5	1.4	15.1	0.107	0.535	26.060694	-98.372523
T. C. Monterrey - Reynosa	0.00	3	2	5083	0.8	81.2	1.5	11.0	1.2	1.8	1.0	1.1	0.4	82.0	1.5	16.5	0.095	0.535	26.060701	-98.372710
Puente Anzaldúas	6.20																			

22 CARR: Reynosa - Nuevo Laredo

CLAVE: 28076

RUTA: MEX-002

AÑO: 2013

LUGAR	ESTACION				CLASIFICACION VEHICULAR EN PORCIENTO														COORDENADAS	
	KM	TE	SC	TDPA	M	A	B	C2	C3	T3S2	T3S3	T3S2R4	OTROS	A	B	C	K'	D	LATITUD	LONGITUD
Reynosa	0.00	3	1	3429	0.4	80.4	2.6	10.4	1.7	1.4	1.5	1.3	0.3	80.8	2.6	16.6	0.088	0.500	26.148924	-98.351331
Reynosa	0.00	3	2	3426	0.5	78.2	2.9	11.5	1.9	1.6	1.6	1.5	0.3	78.7	2.9	18.4	0.087	0.500	26.148878	-98.351498
X. C. Los Dos Estados - Gustavo Díaz Ordáz	35.68	3	0	5298	0.2	74.7	2.1	12.9	1.0	3.6	2.2	3.0	0.3	74.9	2.1	23.0	0.077	0.507	26.213359	-98.597842
Cd. Camargo	63.40	3	0	3611	0.4	71.9	2.5	13.9	1.2	3.3	2.1	4.2	0.5	72.3	2.5	25.2	0.078	0.506	26.328583	-98.847639
Los Guerra	92.77	3	0	2504	0.1	72.3	2.3	11.0	1.4	4.4	2.3	6.0	0.2	72.4	2.3	25.3	0.096	0.505	26.390626	-99.098629
Mier	102.35	3	0	583	0.3	62.5	2.4	18.6	3.7	6.2	3.9	2.1	0.3	62.8	2.4	34.8	0.166	0.526	26.450256	-99.153498
T. Der. Nueva Cd. Guerrero (2º Acceso)	122.67	3	0	550	0.3	57.7	2.1	23.7	2.9	7.4	3.0	2.7	0.2	58.0	2.1	39.9	0.133	0.512	26.558466	-99.245962
T. C. Monterrey - Nuevo Laredo	221.08	1	0	532	0.3	55.3	2.7	23.0	4.4	7.6	3.1	2.9	0.7	55.6	2.7	41.7	0.100	0.515	27.298938	-99.589242

23 CARR: Soto La Marina - La Coma

CLAVE: 28052

RUTA: MEX-180

AÑO: 2013

LUGAR	ESTACION				CLASIFICACION VEHICULAR EN PORCIENTO														COORDENADAS	
	KM	TE	SC	TDPA	M	A	B	C2	C3	T3S2	T3S3	T3S2R4	OTROS	A	B	C	K'	D	LATITUD	LONGITUD
Soto La Marina	0.00	3	0	3101	0.8	74.2	6.6	8.9	1.7	4.8	1.8	0.8	0.4	75.0	6.6	18.4	0.095	0.524	23.783326	-98.196668
La Coma	86.00	1	0	1039	0.4	57.8	9.8	10.4	2.9	12.0	4.1	2.2	0.4	58.2	9.8	32.0	0.099	0.547	24.464322	-98.339306

24 CARR: Tampico - Cd. Mante

CLAVE: 28163

RUTA: MEX-080

AÑO: 2013

LUGAR	ESTACION				CLASIFICACION VEHICULAR EN PORCIENTO														COORDENADAS	
	KM	TE	SC	TDPA	M	A	B	C2	C3	T3S2	T3S3	T3S2R4	OTROS	A	B	C	K'	D	LATITUD	LONGITUD
Tampico	0.00																			
T. Der. Cyanaquim	14.79	1	1	24231	1.3	84.7	1.4	5.0	1.2	2.0	2.7	1.0	0.7	86.0	1.4	12.6	0.078	0.501	22.347651	-97.877951
T. Der. Cyanaquim	14.79	1	2	24343	1.5	82.5	1.5	5.9	1.2	2.4	3.2	1.1	0.7	84.0	1.5	14.5	0.089	0.501	22.347563	-97.877944
Altamira	24.00	1	1	21330	1.4	83.6	2.7	6.5	0.8	2.0	1.5	1.0	0.5	85.0	2.7	12.3	0.082	0.501	22.385567	-97.917585
Altamira	24.00	1	2	21245	1.1	82.3	2.8	7.6	0.8	2.1	1.7	1.1	0.5	83.4	2.8	13.8	0.068	0.501	22.385466	-97.917752
Altamira	24.00	3	1	8189	1.2	77.8	2.8	7.5	1.7	4.1	1.7	2.5	0.7	79.0	2.8	18.2	0.102	0.512	22.421485	-97.944112
Altamira	24.00	3	2	8600	1.2	75.4	3.0	8.8	1.9	4.4	1.9	2.7	0.7	76.6	3.0	20.4	0.090	0.512	22.421295	-97.944337

TAMAULIPAS

24 CARR: Tampico - Cd. Mante

CLAVE: 28163

RUTA: MEX-080

AÑO: 2013

LUGAR	ESTACION				CLASIFICACION VEHICULAR EN PORCIENTO														COORDENADAS	
	KM	TE	SC	TDPA	M	A	B	C2	C3	T3S2	T3S3	T3S2R4	OTROS	A	B	C	K'	D	LATITUD	LONGITUD
T. Der. Lomas del Real	33.00	3	1	5399	2.1	66.9	2.6	7.9	2.3	7.1	2.9	7.2	1.0	69.0	2.6	28.4	0.086	0.507	22.473652	-97.995655
T. Der. Lomas del Real	33.00	3	2	5542	0.4	66.3	3.1	8.2	2.5	7.5	3.2	7.8	1.0	66.7	3.1	30.2	0.098	0.507	22.473031	-97.994647
Cauhtémoc	55.80	3	1	3305	0.7	58.3	4.0	6.3	2.8	10.9	4.3	11.9	0.8	59.0	4.0	37.0	0.079	0.512	22.569128	-98.165279
Cauhtémoc	55.80	3	2	3470	1.1	54.8	4.5	6.9	3.1	11.3	4.7	12.7	0.9	55.9	4.5	39.6	0.079	0.512	22.569014	-98.165432
Estación Manuel	78.12	1	1	1140	1.2	75.6	4.2	5.5	2.9	4.1	1.8	3.9	0.8	76.8	4.2	19.0	0.070	0.502	22.698767	-98.279948
Estación Manuel	78.12	1	2	1144	1.2	74.1	4.0	6.5	2.9	4.6	1.9	4.1	0.7	75.3	4.0	20.7	0.074	0.502	22.698607	-98.280112
González	96.00	3	0	1997	0.9	70.7	3.1	8.1	3.9	4.5	2.8	5.3	0.7	71.6	3.1	25.3	0.089	0.505	22.821658	-98.450796
Magiscatzín	122.50	3	0	1863	1.6	63.6	2.7	10.6	5.1	6.0	3.6	5.7	1.1	65.2	2.7	32.1	0.081	0.505	22.802799	-98.710238
Faja de Oro	143.00	3	0	2782	2.4	65.1	2.7	9.8	5.1	4.1	3.2	6.6	1.0	67.5	2.7	29.8	0.082	0.504	22.721546	-98.876248
T. C. Cd. Valles - Cd. Victoria	155.00	1	0	2855	6.3	75.1	2.3	6.3	2.0	2.7	1.6	3.2	0.5	81.4	2.3	16.3	0.089	0.517	22.724748	-98.952775

25 CARR: Tuxpam - Tampico

CLAVE: 00529

RUTA: MEX-180

AÑO: 2013

LUGAR	ESTACION				CLASIFICACION VEHICULAR EN PORCIENTO														COORDENADAS	
	KM	TE	SC	TDPA	M	A	B	C2	C3	T3S2	T3S3	T3S2R4	OTROS	A	B	C	K'	D	LATITUD	LONGITUD
Tuxpam	0.00	3	0	5927	1.9	78.0	4.2	11.1	0.7	2.5	0.7	0.6	0.3	79.9	4.2	15.9	0.079	0.501	20.955060	-97.458888
T. Izq. La Lajuela	28.70	1	0	5164	2.1	72.8	5.2	13.1	1.1	2.8	1.1	1.3	0.5	74.9	5.2	19.9	0.101	0.504	21.045845	-97.618084
T. Izq. Tempoal de Sánchez	45.20	1	0	5156	3.5	78.4	3.0	9.6	0.9	3.2	0.5	0.6	0.3	81.9	3.0	15.1	0.087	0.501	21.090139	-97.730694
Cerro Azul	56.66	1	0	9163	3.0	67.5	3.5	9.4	1.9	7.2	3.5	3.1	0.9	70.5	3.5	26.0	0.087	0.516	21.174997	-97.752660
T. Izq. Naranjos	78.60	1	0	9700	1.7	66.1	4.0	9.7	2.6	8.2	3.4	3.5	0.8	67.8	4.0	28.2	0.064	0.512	21.334982	-97.694729
T. Izq. Naranjos	78.60	3	0	9980	3.5	68.1	4.6	7.2	1.8	8.2	2.6	3.0	1.0	71.6	4.6	23.8	0.071	0.504	21.362924	-97.684906
T. Der. Ozuluama	124.42	1	0	5521	1.4	57.4	5.6	11.5	3.5	10.0	4.3	5.4	0.9	58.8	5.6	35.6	0.067	0.502	21.671081	-97.859872
T. Der. Ozuluama	124.42	3	0	5276	1.7	49.1	7.2	11.8	5.3	12.3	5.0	6.6	1.0	50.8	7.2	42.0	0.058	0.512	21.686335	-97.851281
Tampico Alto	177.80	1	0	5531	1.0	53.7	7.5	10.9	3.1	11.2	4.9	6.8	0.9	54.7	7.5	37.8	0.067	0.516	22.117565	-97.804413
Tampico Alto	177.80	3	0	7030	1.3	61.5	6.0	8.3	2.7	9.9	4.0	5.3	1.0	62.8	6.0	31.2	0.068	0.513	22.104944	-97.803294
Villa Cauhtémoc	186.85	1	0	7689	1.5	66.0	5.7	6.7	2.5	8.1	3.6	5.1	0.8	67.5	5.7	26.8	0.079	0.506	22.167558	-97.829482
Villa Cauhtémoc	186.85	3	0	5120	2.2	66.7	6.2	6.5	2.4	7.9	3.2	4.1	0.8	68.9	6.2	24.9	0.064	0.502	22.201945	-97.841968
Tampico	191.00																			

26 CARR: Libramiento Poniente de Tampico (Cuota)

CLAVE: 28051

RUTA: MEX-070D

AÑO: 2013

LUGAR	ESTACION				CLASIFICACION VEHICULAR EN PORCIENTO														COORDENADAS	
	KM	TE	SC	TDPA	M	A	B	C2	C3	T3S2	T3S3	T3S2R4	OTROS	A	B	C	K'	D	LATITUD	LONGITUD
T. C. Tampico - Cd. Mante	0.00	3	0	13999	1.4	71.7	1.7	8.2	2.8	7.7	2.4	3.1	1.0	73.1	1.7	25.2	0.069	0.507	22.337499	-97.877166
Caseta de Cobro Tampico	5.10	2	0	4811	0.2	47.0	0.6	9.7	8.1	15.6	6.1	11.6	1.1	47.2	0.6	52.2	0.074	0.500	22.275285	-97.893448

TAMAULIPAS

26 CARR: Libramiento Poniente de Tampico (Cuota)

CLAVE: 28051

RUTA: MEX-070D

AÑO: 2013

LUGAR	ESTACION				CLASIFICACION VEHICULAR EN PORCIENTO														COORDENADAS	
	KM	TE	SC	TDPA	M	A	B	C2	C3	T3S2	T3S3	T3S2R4	OTROS	A	B	C	K'	D	LATITUD	LONGITUD
T. C. Cd. Valles - Tampico	12.00	1	0	6864	0.6	63.1	1.8	8.6	4.1	10.2	4.5	6.2	0.9	63.7	1.8	34.5	0.077	0.510	22.233914	-97.891151

27 CARR: Matamoros - Reynosa (Cuota)

CLAVE: 28079

RUTA: MEX-002D

AÑO: 2013

LUGAR	ESTACION				CLASIFICACION VEHICULAR EN PORCIENTO														COORDENADAS	
	KM	TE	SC	TDPA	M	A	B	C2	C3	T3S2	T3S3	T3S2R4	OTROS	A	B	C	K'	D	LATITUD	LONGITUD
T. C. Matamoros - Reynosa	0.00	3	1	1752	0.2	76.3	3.3	8.2	2.2	6.4	1.2	1.6	0.6	76.5	3.3	20.2	0.086	0.500	26.000276	-97.760581
T. C. Matamoros - Reynosa	0.00	3	2	1750	0.6	73.6	3.6	8.5	2.7	7.3	1.4	1.7	0.6	74.2	3.6	22.2	0.075	0.500	26.000026	-97.760730
Caseta de Cobro Nuevo Progreso	29.39	2	1	1351	0.3	73.2	3.9	5.6	3.4	9.2	1.0	2.6	0.8	73.5	3.9	22.6	0.101	0.500	26.036288	-97.954444
Caseta de Cobro Nuevo Progreso	29.39	2	2	1351	0.3	73.2	3.9	5.6	3.4	9.2	1.0	2.6	0.8	73.5	3.9	22.6	0.101	0.500	26.036288	-97.954444
T. C. Matamoros - Reynosa	42.00																			
T. C. Matamoros - Reynosa	44.60	1	1	2713	0.7	80.2	3.8	6.3	1.7	4.2	1.1	1.6	0.4	80.9	3.8	15.3	0.118	0.507	26.007585	-98.160260
T. C. Matamoros - Reynosa	44.60	1	2	2789	0.7	77.5	3.9	7.9	2.0	4.4	1.2	2.0	0.4	78.2	3.9	17.9	0.108	0.507	26.007289	-98.160191

28 CARR: Aldama - Barra El Tordo

CLAVE: 28620

RUTA: TAM

AÑO: 2013

LUGAR	ESTACION				CLASIFICACION VEHICULAR EN PORCIENTO														COORDENADAS	
	KM	TE	SC	TDPA	M	A	B	C2	C3	T3S2	T3S3	T3S2R4	OTROS	A	B	C	K'	D	LATITUD	LONGITUD
Aldama	0.00	3	0	2170	4.9	78.4	2.3	10.7	0.9	1.7	0.8	0.2	0.1	83.3	2.3	14.4	0.067	0.508	22.915491	-98.063374
Barra El Tordo	20.00																			

29 CARR: Barretal - Nueva Villa de Padilla

CLAVE: 28001

RUTA: TAM-001

AÑO: 2013

LUGAR	ESTACION				CLASIFICACION VEHICULAR EN PORCIENTO														COORDENADAS	
	KM	TE	SC	TDPA	M	A	B	C2	C3	T3S2	T3S3	T3S2R4	OTROS	A	B	C	K'	D	LATITUD	LONGITUD
Barretal	0.00	3	0	4157	1.4	84.4	2.4	7.7	1.0	2.4	0.5	0.1	0.1	85.8	2.4	11.8	0.094	0.502	24.083767	-99.111371
Nueva Villa de Padilla	24.50	1	0	1661	3.3	83.6	1.6	6.7	1.3	2.7	0.6	0.2	0.0	86.9	1.6	11.5	0.082	0.522	24.053093	-98.914575

30 CARR: China - Méndez

CLAVE: 00191

RUTA: NL-TAM

AÑO: 2013

LUGAR	ESTACION				CLASIFICACION VEHICULAR EN PORCIENTO														COORDENADAS	
	KM	TE	SC	TDPA	M	A	B	C2	C3	T3S2	T3S3	T3S2R4	OTROS	A	B	C	K'	D	LATITUD	LONGITUD
China	0.00	3	0	1797	0.3	73.7	2.5	16.0	1.8	2.4	2.6	0.4	0.3	74.0	2.5	23.5	0.083	0.506	25.700645	-99.226405
Lim. Edos. Term. N. L. Ppia. Tamps.	75.00																			
Méndez	100.00																			

TAMAULIPAS

31 CARR: Ébano - Estación Manuel

CLAVE: 24624

RUTA: SLP-TAM

AÑO: 2013

LUGAR	ESTACION				CLASIFICACION VEHICULAR EN PORCIENTO														COORDENADAS	
	KM	TE	SC	TDPA	M	A	B	C2	C3	T3S2	T3S3	T3S2R4	OTROS	A	B	C	K'	D	LATITUD	LONGITUD
Ébano	0.00	3	0	1644	5.1	64.7	3.4	11.1	3.1	7.2	3.0	1.4	1.0	69.8	3.4	26.8	0.096	0.503	22.234606	-98.365472
Lím. de Edos. Term. S. L. P.. Ppia. Ver.	2.71																			
Lím. de Edos. Term. Ver. Ppia. S. L. P.	3.95																			
Lím. de Edos. Term. S. L. P. Ppia. Ver.	5.00																			
Lím. de Edos. Term. Ver. Ppia. Tamps.	25.00																			
Estación Manuel	65.60																			

32 CARR: El Limón - Ocampo

CLAVE: 28019

RUTA: TAM-019

AÑO: 2013

LUGAR	ESTACION				CLASIFICACION VEHICULAR EN PORCIENTO														COORDENADAS	
	KM	TE	SC	TDPA	M	A	B	C2	C3	T3S2	T3S3	T3S2R4	OTROS	A	B	C	K'	D	LATITUD	LONGITUD
T. C. Cd. Valles - Cd. Victoria	0.00	3	0	1791	9.3	74.1	0.7	5.3	3.0	2.9	1.6	3.0	0.1	83.4	0.7	15.9	0.095	0.512	22.837085	-99.024844
Ocampo	43.00	1	0	714	7.8	67.8	1.2	6.6	4.3	3.6	4.6	3.6	0.5	75.6	1.2	23.2	0.094	0.501	22.828569	-99.319080

33 CARR: Ent. Huisachito - Nuevo Laredo

CLAVE: 00074

RUTA: NL-001-TAM

AÑO: 2013

LUGAR	ESTACION				CLASIFICACION VEHICULAR EN PORCIENTO														COORDENADAS	
	KM	TE	SC	TDPA	M	A	B	C2	C3	T3S2	T3S3	T3S2R4	OTROS	A	B	C	K'	D	LATITUD	LONGITUD
T. C. Monterrey - Colombia	0.00	3	0	847	1.2	72.6	2.7	9.7	3.3	5.4	3.0	2.0	0.1	73.8	2.7	23.5	0.078	0.512	27.354628	-99.949143
Lim. Edos. Term. N. L. Ppia. Tamps.	19.00																			
X. C. Libramiento de Nuevo Laredo	47.00	1	0	1928	1.2	73.9	2.5	12.0	3.2	4.0	2.2	0.9	0.1	75.1	2.5	22.4	0.073	0.514	27.478249	-99.634537
Nuevo Laredo	51.00	1	0	9847	1.3	83.5	2.0	6.9	1.3	3.5	0.7	0.2	0.6	84.8	2.0	13.2	0.072	0.517	27.484886	-99.580710

34 CARR: Ent. Las Blancas - Río Bravo

CLAVE: 28003

RUTA: TAM-003

AÑO: 2013

LUGAR	ESTACION				CLASIFICACION VEHICULAR EN PORCIENTO														COORDENADAS	
	KM	TE	SC	TDPA	M	A	B	C2	C3	T3S2	T3S3	T3S2R4	OTROS	A	B	C	K'	D	LATITUD	LONGITUD
T. C. Cd. Victoria - Matamoros	0.00	3	0	2965	1.2	79.6	2.5	8.2	2.3	2.7	1.3	1.4	0.8	80.8	2.5	16.7	0.074	0.504	25.665986	-97.603123
Valle Hermoso	21.00	1	1	2733	1.5	81.9	2.3	5.8	0.8	4.9	1.1	0.8	0.9	83.4	2.3	14.3	0.087	0.503	25.666761	-97.769409
Valle Hermoso	21.00	1	2	2705	1.5	79.7	2.7	6.7	0.8	5.5	1.3	0.8	1.0	81.2	2.7	16.1	0.087	0.503	25.666642	-97.769403
Río Bravo	91.00	1	0	7216	1.1	85.2	2.8	3.9	0.6	3.4	1.4	0.6	1.0	86.3	2.8	10.9	0.069	0.502	25.979901	-98.118738

TAMAULIPAS

35 CARR: La Joya - Méndez

CLAVE: 28623

RUTA: TAM

AÑO: 2013

LUGAR	ESTACION				CLASIFICACION VEHICULAR EN PORCIENTO														COORDENADAS	
	KM	TE	SC	TDPA	M	A	B	C2	C3	T3S2	T3S3	T3S2R4	OTROS	A	B	C	K'	D	LATITUD	LONGITUD
T. C. Cd. Victoria - Matamoros Méndez	0.00	3	0	555	0.7	74.8	1.0	9.7	6.7	3.2	2.8	1.1	0.0	75.5	1.0	23.5	0.097	0.511	24.930688	-98.114152
	66.00																			

36 CARR: Libramiento de Cd. Victoria

CLAVE: 28282

RUTA: TAM

AÑO: 2013

LUGAR	ESTACION				CLASIFICACION VEHICULAR EN PORCIENTO														COORDENADAS	
	KM	TE	SC	TDPA	M	A	B	C2	C3	T3S2	T3S3	T3S2R4	OTROS	A	B	C	K'	D	LATITUD	LONGITUD
X. C. Ent. Tula - Cd. Victoria	0.00	3	1	11859	5.1	84.8	0.3	7.5	0.4	0.9	0.8	0.0	0.2	89.9	0.3	9.8	0.070	0.509	23.712906	-99.176337
X. C. Ent. Tula - Cd. Victoria	0.00	3	2	12291	4.3	84.2	0.3	8.6	0.4	1.1	0.9	0.0	0.2	88.5	0.3	11.2	0.071	0.509	23.713089	-99.176258
X. C. Cd. Victoria - Matamoros	13.40	1	1	8065	2.4	84.8	0.9	7.6	1.3	1.2	0.9	0.5	0.4	87.2	0.9	11.9	0.102	0.531	23.766392	-99.118037
X. C. Cd. Victoria - Matamoros	13.40	1	2	9138	2.0	83.7	1.1	8.6	1.3	1.3	1.1	0.5	0.4	85.7	1.1	13.2	0.107	0.531	23.766579	-99.117992
X. C. Cd. Victoria - Matamoros	13.40	3	1	8590	1.8	86.5	0.3	6.0	1.0	2.0	1.5	0.6	0.3	88.3	0.3	11.4	0.118	0.523	23.762998	-99.111485
X. C. Cd. Victoria - Matamoros	13.40	3	2	7827	1.4	85.6	0.3	6.8	1.2	2.1	1.6	0.7	0.3	87.0	0.3	12.7	0.107	0.523	23.763522	-99.111660
X. C. Cd. Victoria - Soto La Marina	19.70	1	1	6731	3.0	84.8	0.8	6.4	1.4	1.7	0.8	0.7	0.4	87.8	0.8	11.4	0.108	0.509	23.721737	-99.093778
X. C. Cd. Victoria - Soto La Marina	19.70	1	2	6498	2.7	83.7	0.8	7.0	1.6	2.0	1.0	0.8	0.4	86.4	0.8	12.8	0.084	0.509	23.721755	-99.093517
T. C. Cd. Valles - Cd. Victoria	25.90	1	1	12584	3.8	72.8	1.2	8.1	3.1	6.0	2.0	2.2	0.8	76.6	1.2	22.2	0.070	0.503	23.675779	-99.098768
T. C. Cd. Valles - Cd. Victoria	25.90	1	2	12433	4.3	70.1	1.3	8.9	3.5	6.3	2.3	2.4	0.9	74.4	1.3	24.3	0.072	0.503	23.675857	-99.098482

37 CARR: Libramiento de Mier

CLAVE: 28282

RUTA: TAMPS

AÑO: 2013

LUGAR	ESTACION				CLASIFICACION VEHICULAR EN PORCIENTO														COORDENADAS	
	KM	TE	SC	TDPA	M	A	B	C2	C3	T3S2	T3S3	T3S2R4	OTROS	A	B	C	K'	D	LATITUD	LONGITUD
T. C. Monterrey - Mier	0.00	3	0	494	0.4	45.4	5.5	36.2	3.0	3.5	2.9	3.1	0.0	45.8	5.5	48.7	0.144	0.502	26.428528	-99.163611
T. C. Reynosa - Nuevo Laredo	2.70																			

38 CARR: Libramiento de Nuevo Laredo

CLAVE: 28030

RUTA: TAM

AÑO: 2013

LUGAR	ESTACION				CLASIFICACION VEHICULAR EN PORCIENTO														COORDENADAS	
	KM	TE	SC	TDPA	M	A	B	C2	C3	T3S2	T3S3	T3S2R4	OTROS	A	B	C	K'	D	LATITUD	LONGITUD
T. C. Monterrey - Nuevo Laredo	0.00	3	1	13944	1.4	72.0	2.3	5.7	6.4	10.2	0.8	0.5	0.7	73.4	2.3	24.3	0.079	0.516	27.425876	-99.534925
T. C. Monterrey - Nuevo Laredo	0.00	3	2	14854	1.1	70.2	2.5	6.1	7.5	10.4	0.9	0.5	0.8	71.3	2.5	26.2	0.077	0.516	27.425878	-99.534925
T. C. Piedras Negras - Nuevo Laredo	18.00	1	1	11796	2.3	63.1	2.2	10.3	7.3	12.0	1.0	0.9	0.9	65.4	2.2	32.4	0.100	0.504	27.529632	-99.582519
T. C. Piedras Negras - Nuevo Laredo	18.00	1	2	11620	2.0	60.9	2.3	10.6	8.1	13.1	1.1	0.9	1.0	62.9	2.3	34.8	0.099	0.504	27.529668	-99.582541

TAMAULIPAS

39 CARR: Libramiento de Nuevo Laredo II

CLAVE: 28626

RUTA: TAM

AÑO: 2013

LUGAR	ESTACION				CLASIFICACION VEHICULAR EN PORCIENTO													COORDENADAS		
	KM	TE	SC	TDPA	M	A	B	C2	C3	T3S2	T3S3	T3S2R4	OTROS	A	B	C	K'	D	LATITUD	LONGITUD
T. C. Monterrey - Nuevo Laredo	0.00	3	0	6176	0.0	22.0	2.4	6.9	12.6	49.3	3.1	2.6	1.1	22.0	2.4	75.6	0.067	0.511	27.308892	-99.608158
T. C. Piedras Negras - Nuevo Laredo	32.20	1	1	3653	1.1	29.0	2.8	5.5	10.6	44.5	3.2	2.3	1.0	30.1	2.8	67.1	0.078	0.507	27.559649	-99.601171
T. C. Piedras Negras - Nuevo Laredo	32.20	1	2	3773	0.5	24.8	3.1	5.6	11.7	47.3	3.4	2.6	1.0	25.3	3.1	71.6	0.094	0.507	27.559649	-99.601172

40 CARR: Libramiento de Río Bravo

CLAVE: 28002

RUTA: TAM

AÑO: 2013

LUGAR	ESTACION				CLASIFICACION VEHICULAR EN PORCIENTO													COORDENADAS		
	KM	TE	SC	TDPA	M	A	B	C2	C3	T3S2	T3S3	T3S2R4	OTROS	A	B	C	K'	D	LATITUD	LONGITUD
T. C. Matamoros - Reynosa (1º Acceso)	0.00	3	1	2748	0.5	74.0	3.4	9.3	2.7	5.7	1.9	1.7	0.8	74.5	3.4	22.1	0.085	0.524	25.971776	-98.051128
T. C. Matamoros - Reynosa (1º Acceso)	0.00	3	2	3032	0.3	71.5	3.8	10.4	3.0	6.2	2.1	2.0	0.7	71.8	3.8	24.4	0.104	0.524	25.971570	-98.051014
T. C. Matamoros - Reynosa (2º Acceso)	13.10	1	1	9776	0.7	79.2	2.5	8.9	1.5	3.5	1.8	1.4	0.5	79.9	2.5	17.6	0.094	0.509	25.994742	-98.130253
T. C. Matamoros - Reynosa (2º Acceso)	13.10	1	2	10121	0.9	77.9	2.7	9.1	1.7	3.9	1.8	1.4	0.6	78.8	2.7	18.5	0.092	0.509	25.994651	-98.130414

41 CARR: Los Guerra - Los Herreras

CLAVE: 19031

RUTA: TAM-NL

AÑO: 2013

LUGAR	ESTACION				CLASIFICACION VEHICULAR EN PORCIENTO													COORDENADAS		
	KM	TE	SC	TDPA	M	A	B	C2	C3	T3S2	T3S3	T3S2R4	OTROS	A	B	C	K'	D	LATITUD	LONGITUD
Los Guerra	0.00																			
Lim. Edos. Term. Tamps. Ppia. N. L.	45.90																			
Los Herreras	73.00	1	0	486	0.6	82.5	0.4	12.6	0.9	1.1	1.0	0.8	0.1	83.1	0.4	16.5	0.115	0.507	25.902664	-99.393426

42 CARR: Peña Blanca - Cd. Camargo

CLAVE: 00102

RUTA: NL-TAM

AÑO: 2013

LUGAR	ESTACION				CLASIFICACION VEHICULAR EN PORCIENTO													COORDENADAS		
	KM	TE	SC	TDPA	M	A	B	C2	C3	T3S2	T3S3	T3S2R4	OTROS	A	B	C	K'	D	LATITUD	LONGITUD
T. C. Monterrey - Reynosa	0.00	3	0	1052	0.1	62.0	1.9	18.3	3.3	6.2	6.9	1.0	0.3	62.1	1.9	36.0	0.099	0.521	25.836723	-99.008566
Lim. Edos. Term. N. L. Ppia. Tamps.	30.00																			
Cd. Camargo	65.00	1	0	1902	0.9	74.2	1.6	18.2	1.0	2.8	0.8	0.3	0.2	75.1	1.6	23.3	0.077	0.502	26.302725	-98.834789

43 CARR: Potrero Nuevo - Rancho El Mezquital

CLAVE: 28615

RUTA: TAM

AÑO: 2013

LUGAR	ESTACION				CLASIFICACION VEHICULAR EN PORCIENTO													COORDENADAS		
	KM	TE	SC	TDPA	M	A	B	C2	C3	T3S2	T3S3	T3S2R4	OTROS	A	B	C	K'	D	LATITUD	LONGITUD
T. C. Cd. Victoria - Matamoros	0.00	3	0	838	0.5	84.3	1.7	8.8	1.7	1.6	0.4	0.5	0.5	84.8	1.7	13.5	0.098	0.500	25.713022	-97.570284
Puerto El Mezquital	66.00																			

TAMAULIPAS

44 CARR: Ramal a Gómez Farías

CLAVE: 28020

RUTA: TAM-020

AÑO: 2013

LUGAR	ESTACION				CLASIFICACION VEHICULAR EN PORCIENTO													COORDENADAS		
	KM	TE	SC	TDPA	M	A	B	C2	C3	T3S2	T3S3	T3S2R4	OTROS	A	B	C	K'	D	LATITUD	LONGITUD
T. C. Cd. Valles - Cd. Victoria	0.00	3	0	970	11.9	77.9	1.6	7.4	0.6	0.6	0.0	0.0	0.0	89.8	1.6	8.6	0.094	0.501	23.024134	-99.093922
Gómez Farías	11.00	1	0	688	16.3	72.3	1.4	9.0	0.4	0.6	0.0	0.0	0.0	88.6	1.4	10.0	0.131	0.504	23.031758	-99.148070

45 CARR: Ramal a Xicoténcatl

CLAVE: 28619

RUTA: TAM

AÑO: 2013

LUGAR	ESTACION				CLASIFICACION VEHICULAR EN PORCIENTO													COORDENADAS		
	KM	TE	SC	TDPA	M	A	B	C2	C3	T3S2	T3S3	T3S2R4	OTROS	A	B	C	K'	D	LATITUD	LONGITUD
T. C. Cd. Valles - Cd. Victoria	0.00	3	0	1144	6.8	81.4	0.9	8.5	1.1	0.9	0.2	0.2	0.0	88.2	0.9	10.9	0.093	0.501	22.931244	-99.025991
Xicoténcatl	13.00	1	0	1481	10.0	77.1	1.7	7.5	1.0	1.5	0.3	0.2	0.7	87.1	1.7	11.2	0.084	0.500	22.978356	-98.951518

46 CARR: San Fernando - Carboneras

CLAVE: 28618

RUTA: TAM

AÑO: 2013

LUGAR	ESTACION				CLASIFICACION VEHICULAR EN PORCIENTO													COORDENADAS		
	KM	TE	SC	TDPA	M	A	B	C2	C3	T3S2	T3S3	T3S2R4	OTROS	A	B	C	K'	D	LATITUD	LONGITUD
San Fernando	0.00	3	0	3071	1.1	81.1	2.4	10.5	1.1	2.0	1.0	0.6	0.2	82.2	2.4	15.4	0.085	0.518	24.834682	-98.113687
Carboneras	57.00																			

47 CARR: Soto La Marina - La Pesca

CLAVE: 28049

RUTA: TAM-070

AÑO: 2013

LUGAR	ESTACION				CLASIFICACION VEHICULAR EN PORCIENTO													COORDENADAS		
	KM	TE	SC	TDPA	M	A	B	C2	C3	T3S2	T3S3	T3S2R4	OTROS	A	B	C	K'	D	LATITUD	LONGITUD
T. C. Soto La Marina - La Coma	0.00	3	0	1382	1.0	82.7	2.7	11.1	0.7	1.4	0.2	0.1	0.1	83.7	2.7	13.6	0.091	0.514	23.774552	-98.197095
La Pesca	50.00																			

48 CARR: T. C. (Valle Hermoso - Empalme) - Matamoros

CLAVE: 28005

RUTA: TAM-005

AÑO: 2013

LUGAR	ESTACION				CLASIFICACION VEHICULAR EN PORCIENTO													COORDENADAS		
	KM	TE	SC	TDPA	M	A	B	C2	C3	T3S2	T3S3	T3S2R4	OTROS	A	B	C	K'	D	LATITUD	LONGITUD
T. C. Valle Hermoso - Empalme	0.00	3	0	3728	1.0	82.2	0.8	7.6	1.5	3.9	1.3	0.6	1.1	83.2	0.8	16.0	0.092	0.502	25.775151	-97.792106
Anáhuac	2.00	3	0	1337	0.7	80.9	2.3	7.9	2.2	3.6	1.7	0.4	0.3	81.6	2.3	16.1	0.090	0.504	25.775057	-97.765463
Matamoros	33.90	1	1	8633	1.6	88.0	2.4	4.2	0.7	1.1	1.1	0.5	0.4	89.6	2.4	8.0	0.082	0.516	25.864761	-97.575204
Matamoros	33.90	1	2	9221	1.6	87.0	2.7	4.5	0.8	1.1	1.3	0.5	0.5	88.6	2.7	8.7	0.076	0.516	25.864707	-97.574756

TAMAULIPAS

49 CARR: T. C. Libramiento Cd. Victoria - San Antonio

CLAVE:

RUTA: TAM-126

AÑO: 2013

LUGAR	ESTACION				CLASIFICACION VEHICULAR EN PORCIENTO														COORDENADAS	
	KM	TE	SC	TDPA	M	A	B	C2	C3	T3S2	T3S3	T3S2R4	OTROS	A	B	C	K'	D	LATITUD	LONGITUD
T. C. Libramiento Cd. Victoria	0.00	3	0	3984	1.3	53.2	3.0	8.2	2.7	12.5	6.0	12.1	1.0	54.5	3.0	42.5	0.073	0.506	23.661454	-99.111142
San Antonio	37.50	1	0	3658	0.9	52.1	3.8	6.3	2.5	14.5	5.8	13.1	1.0	53.0	3.8	43.2	0.064	0.507	23.587802	-99.322551

50 CARR: Valle Hermoso - Empalme

CLAVE: 28004

RUTA: TAM-004

AÑO: 2013

LUGAR	ESTACION				CLASIFICACION VEHICULAR EN PORCIENTO														COORDENADAS	
	KM	TE	SC	TDPA	M	A	B	C2	C3	T3S2	T3S3	T3S2R4	OTROS	A	B	C	K'	D	LATITUD	LONGITUD
Valle Hermoso	0.00	3	0	5154	1.1	78.0	1.1	9.2	1.9	4.7	1.9	0.9	1.2	79.1	1.1	19.8	0.084	0.515	25.695364	-97.815835
Empalme	28.38	1	0	3194	0.4	77.5	2.5	10.7	1.9	3.9	1.3	1.3	0.5	77.9	2.5	19.6	0.074	0.501	25.874172	-97.795755

51 CARR: Valle Hermoso - Las Yescas

CLAVE: 28614

RUTA: TAM

AÑO: 2013

LUGAR	ESTACION				CLASIFICACION VEHICULAR EN PORCIENTO														COORDENADAS	
	KM	TE	SC	TDPA	M	A	B	C2	C3	T3S2	T3S3	T3S2R4	OTROS	A	B	C	K'	D	LATITUD	LONGITUD
Valle Hermoso	0.00	3	0	3082	0.5	82.2	0.8	5.5	2.6	4.0	2.3	1.5	0.6	82.7	0.8	16.5	0.125	0.503	25.614459	-97.816125
T. C. Cd. Victoria - Matamoros	26.00	1	0	1219	0.4	76.1	2.6	8.3	3.7	2.9	3.6	2.2	0.2	76.5	2.6	20.9	0.109	0.520	25.465550	-97.816237

52 CARR: Santander Jiménez - Ent. El Ojito

CLAVE: 28579

RUTA: MEX-107-TAM

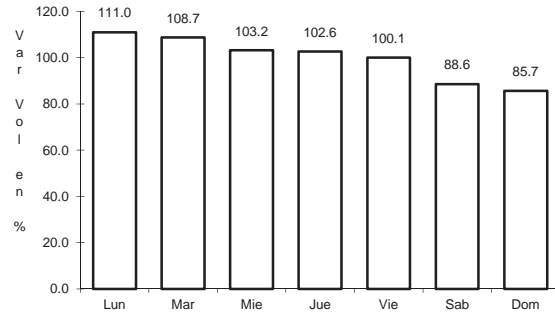
AÑO: 2013

LUGAR	ESTACION				CLASIFICACION VEHICULAR EN PORCIENTO														COORDENADAS	
	KM	TE	SC	TDPA	M	A	B	C2	C3	T3S2	T3S3	T3S2R4	OTROS	A	B	C	K'	D	LATITUD	LONGITUD
T. C. Cd. Victoria - Matamoros	0.00	3	0	1752	0.9	76.6	1.9	13.7	1.9	2.3	0.9	1.3	0.5	77.5	1.9	20.6	0.088	0.502	24.209199	-98.483132
Abasolo	20.00	1	0	3172	2.4	81.5	1.4	7.6	1.4	2.6	1.0	0.7	1.4	83.9	1.4	14.7	0.133	0.501	24.068004	-98.385048
T. C. Soto La Marina - La Coma	58.00	1	0	484	1.3	78.3	3.3	9.5	3.1	2.3	1.4	0.8	0.0	79.6	3.3	17.1	0.140	0.508	23.941696	-98.167513

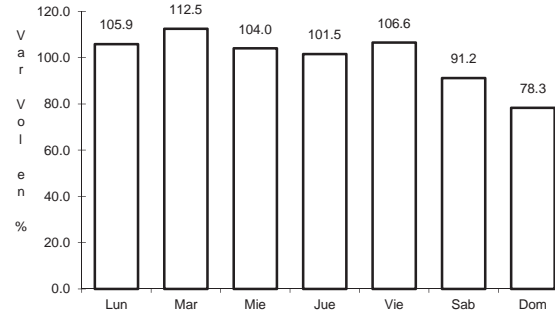
1 CARR: Antiguo Morelos - Ent. El Huizache

CLAVE: 00136

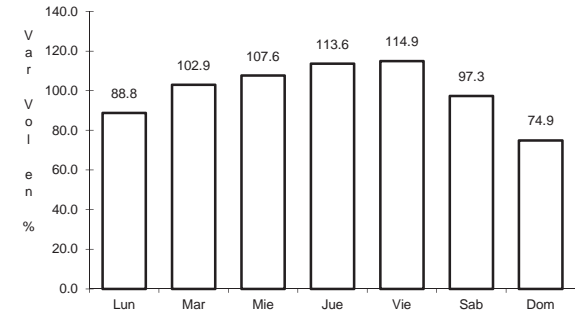
RUTA: MEX-080



Km: 0.00 Tipo: 3 Sent: 0



Km: 86.00 Tipo: 3 Sent: 0

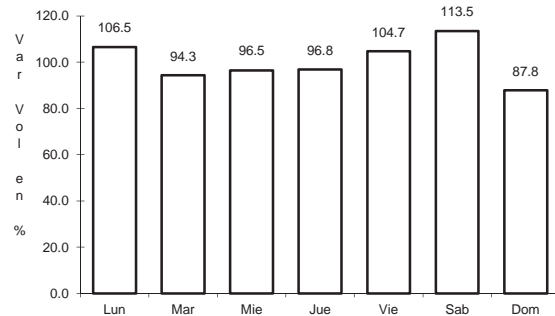


Km: 198.83 Tipo: 1 Sent: 0

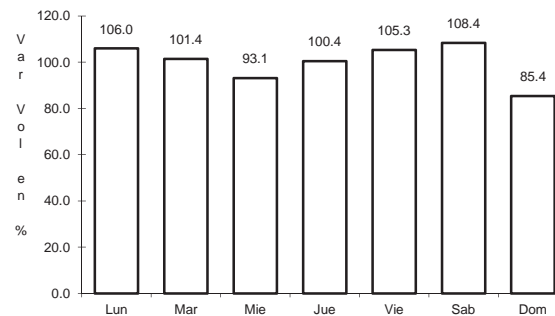
2 CARR: Cd. Valles - Cd. Victoria

CLAVE: 00509

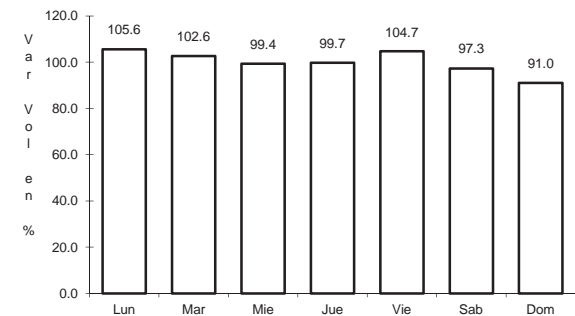
RUTA: MEX-085



Km: 0.00 Tipo: 3 Sent: 0



Km: 110.00 Tipo: 3 Sent: 0

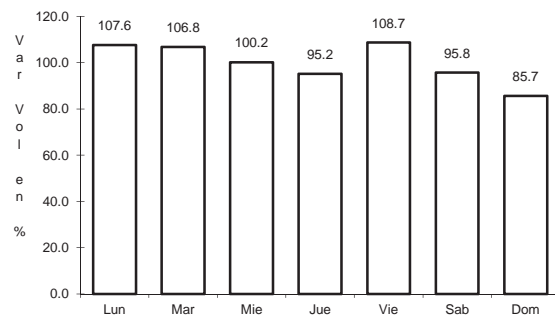


Km: 232.00 Tipo: 1 Sent: 0

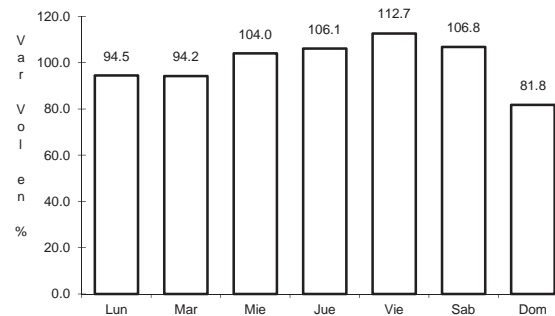
3 CARR: Cd. Valles - Tampico

CLAVE: 00138

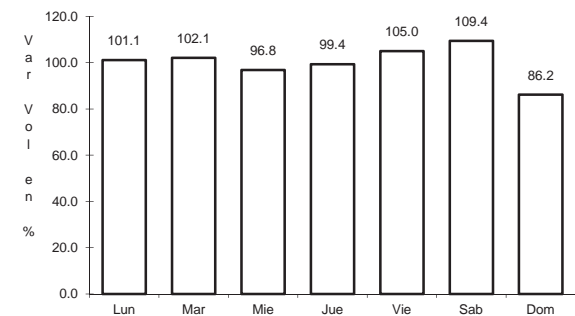
RUTA: MEX-070



Km: 0.00 Tipo: 3 Sent: 0



Km: 138.00 Tipo: 1 Sent: 1

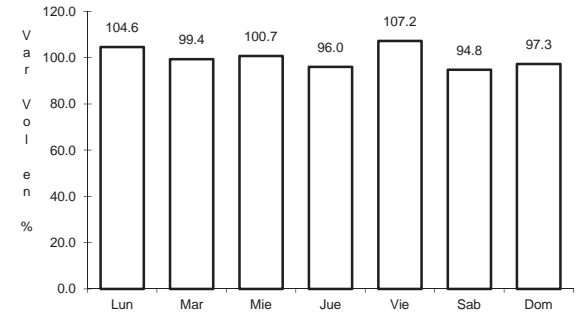
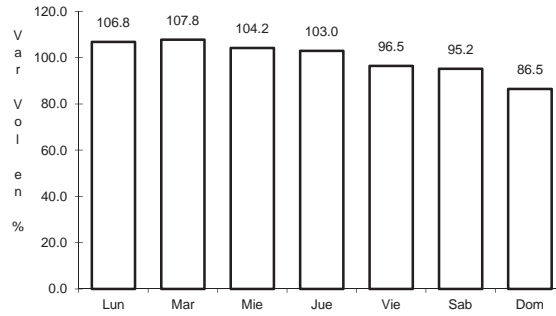
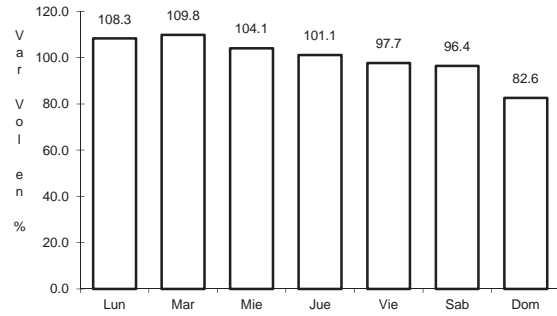


Km: 138.00 Tipo: 1 Sent: 2

4 CARR: Cd. Victoria - Matamoros

CLAVE: 28139

RUTA: MEX-101-180



Km: 5.00 Tipo: 3 Sent: 1

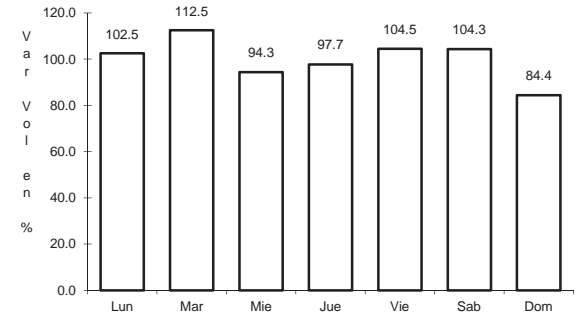
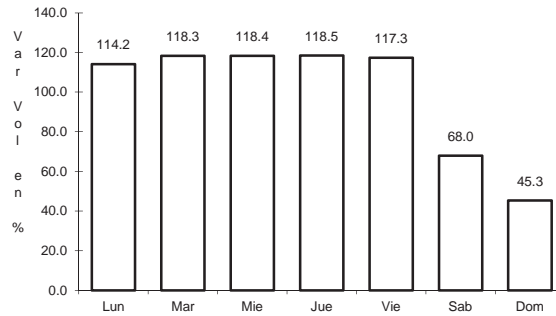
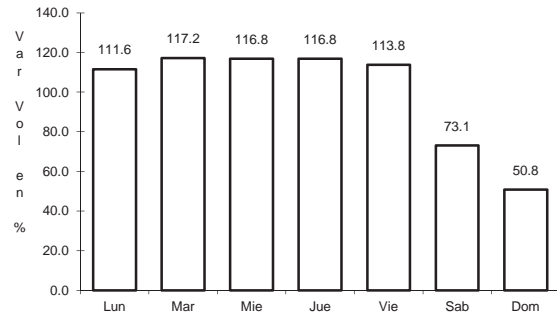
Km: 5.00 Tipo: 3 Sent: 2

Km: 175.00 Tipo: 3 Sent: 0

5 CARR: Cd. Victoria - Soto La Marina

CLAVE: 28009

RUTA: MEX-070



Km: 0.00 Tipo: 3 Sent: 1

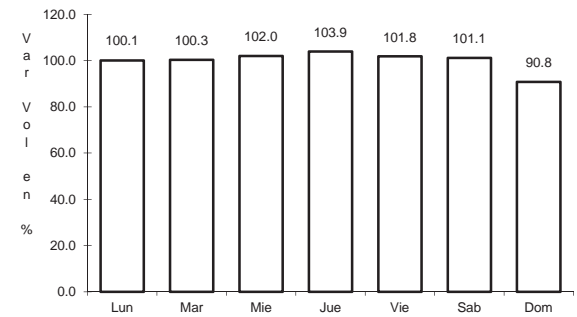
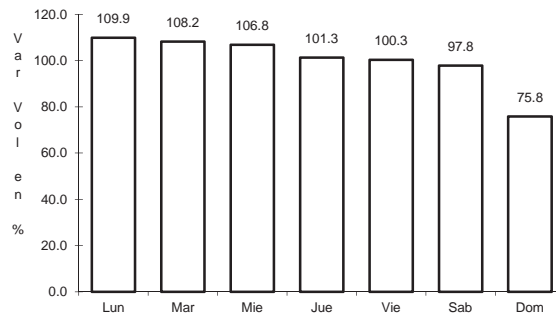
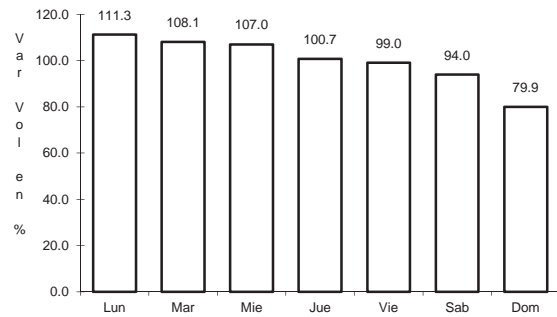
Km: 0.00 Tipo: 3 Sent: 2

Km: 116.80 Tipo: 1 Sent: 0

6 CARR: Ciudad Victoria - Monterrey

CLAVE: 00462

RUTA: MEX-085



Km: 0.00 Tipo: 3 Sent: 1

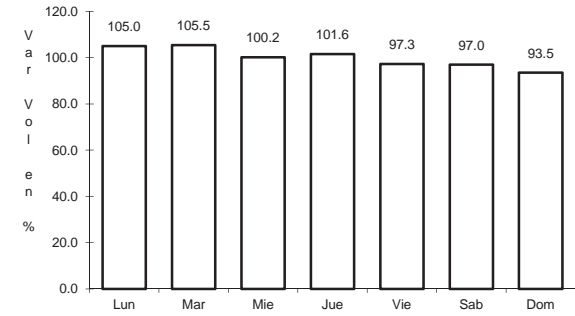
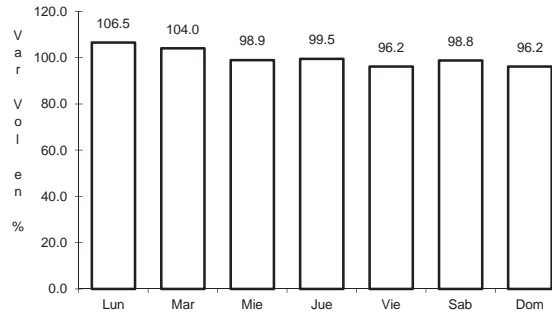
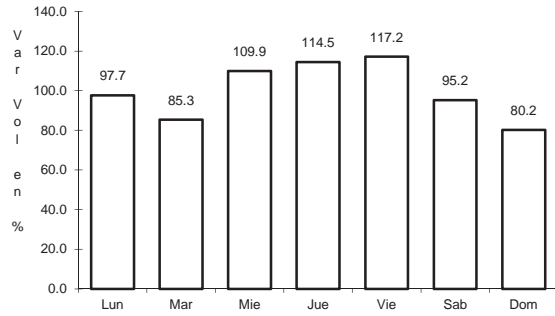
Km: 0.00 Tipo: 3 Sent: 2

Km: 154.00 Tipo: 1 Sent: 0

7 CARR: Ent. Tula - Cd. Victoria

CLAVE: 00179

RUTA: MEX-101



Km: 0.00

Tipo: 3

Sent: 0

Km: 180.00

Tipo: 1

Sent: 1

Km: 180.00

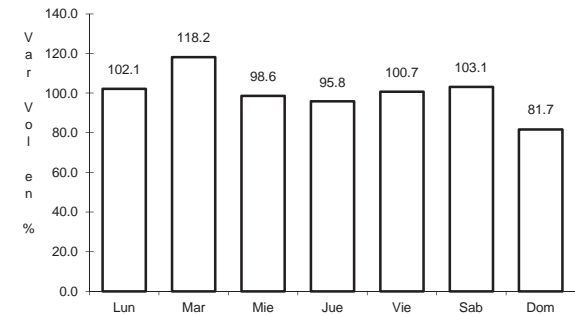
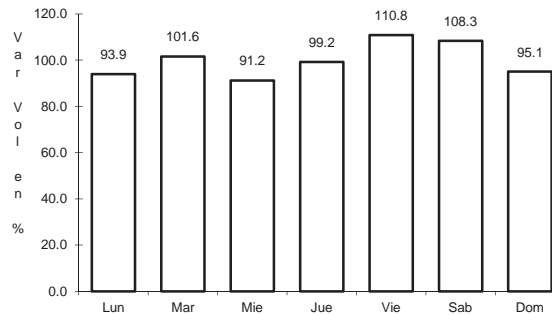
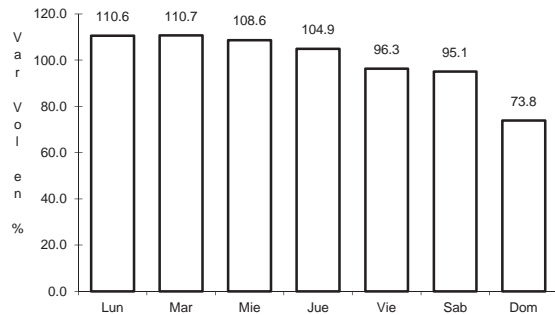
Tipo: 1

Sent: 2

8 CARR: Estación Manuel - T. C. (Cd. Victoria - Soto La Marina)

CLAVE: 28294

RUTA: MEX-180



Km: 0.00

Tipo: 3

Sent: 0

Km: 69.00

Tipo: 3

Sent: 0

Km: 145.00

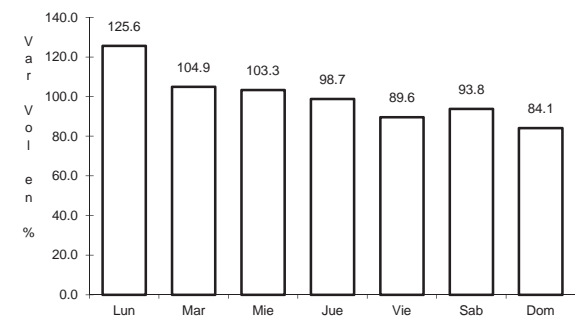
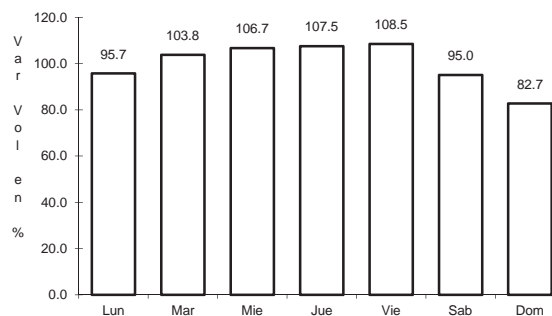
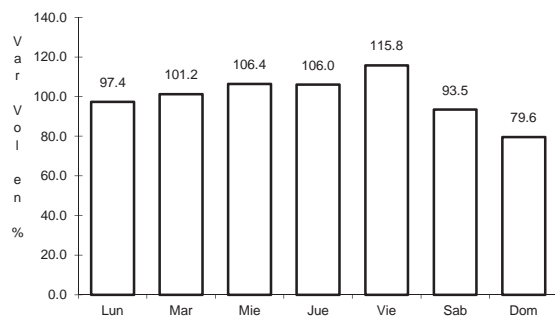
Tipo: 1

Sent: 0

9 CARR: González - Llera de Canales

CLAVE: 28578

RUTA: MEX-081



Km: 0.00

Tipo: 3

Sent: 0

Km: 58.50

Tipo: 1

Sent: 0

Km: 89.00

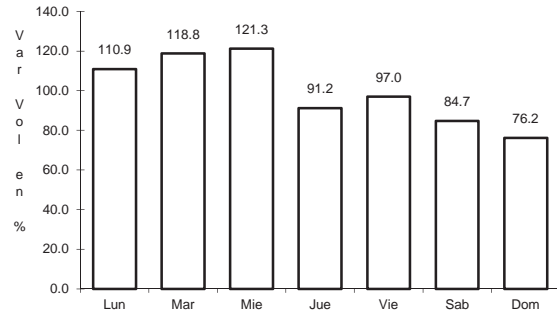
Tipo: 1

Sent: 0

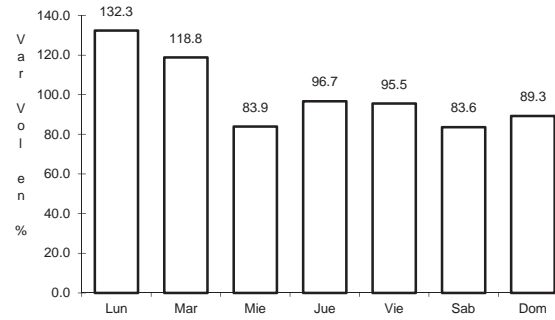
10 CARR: Ignacio Zaragoza - T. C. (Ciudad Victoria - Monterrey)

CLAVE: 28625

RUTA: MEX-083



Km: 0.00 Tipo: 3 Sent: 0

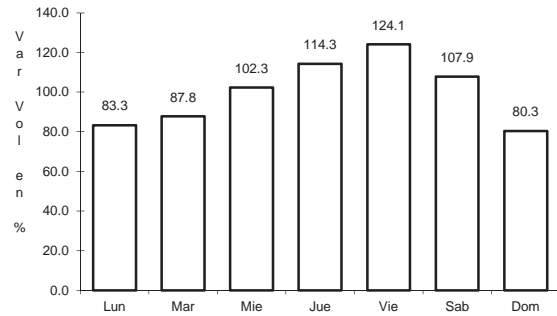


Km: 94.30 Tipo: 1 Sent: 0

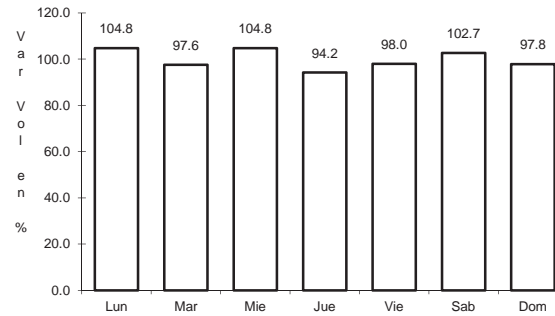
11 CARR: Las Urracas - T. C. (Matamoros - Reynosa)

CLAVE: 28029

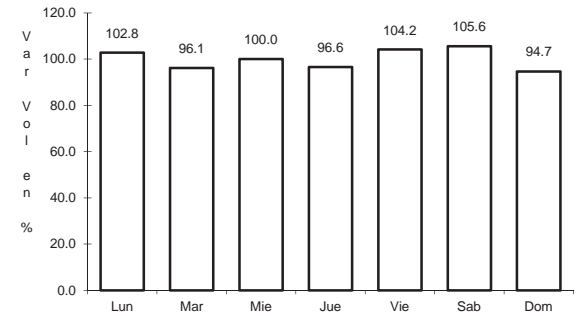
RUTA: MEX-097



Km: 0.00 Tipo: 3 Sent: 0



Km: 113.25 Tipo: 1 Sent: 1

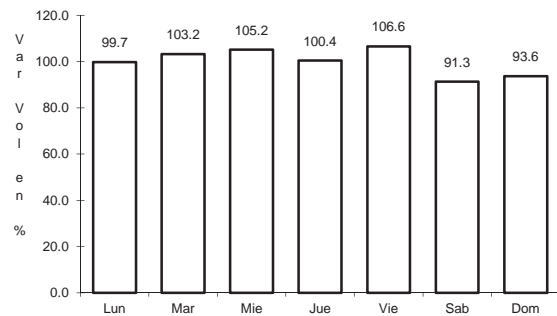


Km: 113.25 Tipo: 1 Sent: 2

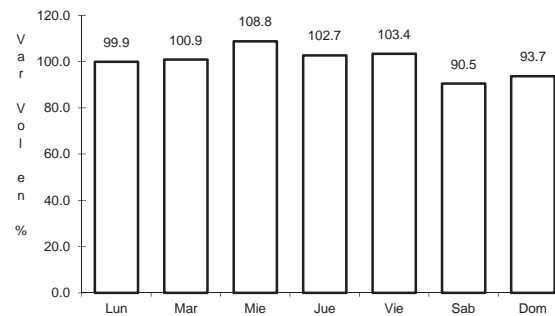
12 CARR: Libramiento de Reynosa

CLAVE: 28008

RUTA: MEX-040



Km: 0.00 Tipo: 3 Sent: 1

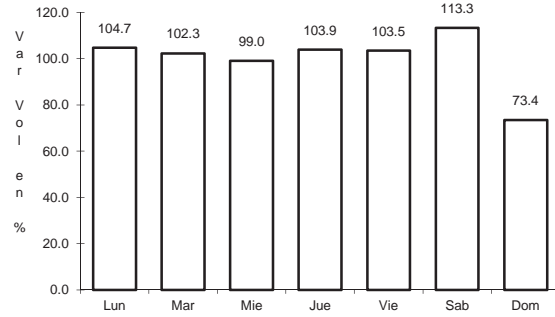


Km: 0.00 Tipo: 3 Sent: 2

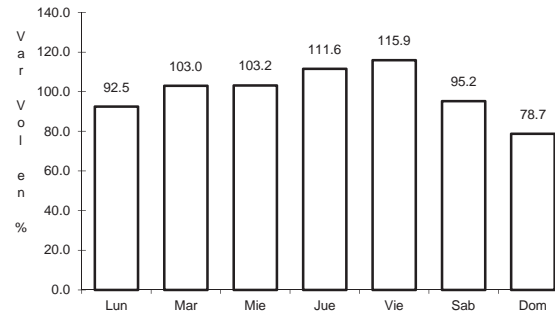
13 CARR: Libramiento Estación Manuel - González

CLAVE: 28002

RUTA: MEX-085



Km: 0.00 Tipo: 3 Sent: 0

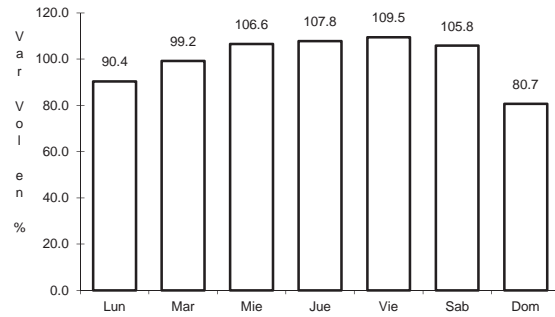


Km: 24.80 Tipo: 1 Sent: 0

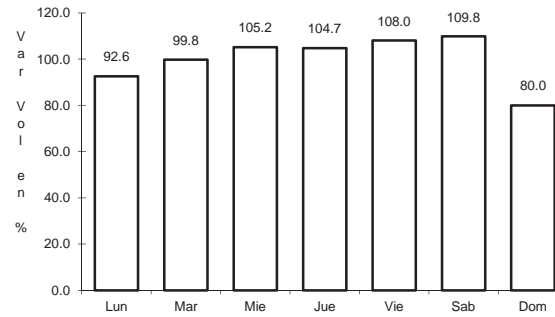
14 CARR: Matamoros - Playa Lauro Villar

CLAVE: 28078

RUTA: MEX-002



Km: 0.00 Tipo: 3 Sent: 1

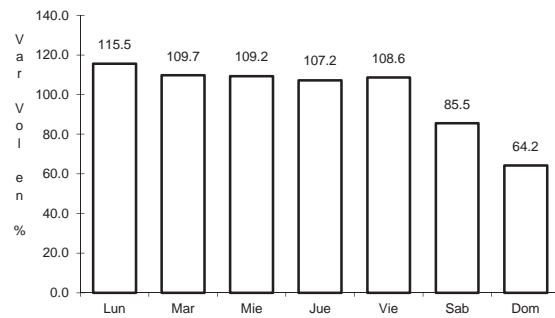


Km: 0.00 Tipo: 3 Sent: 2

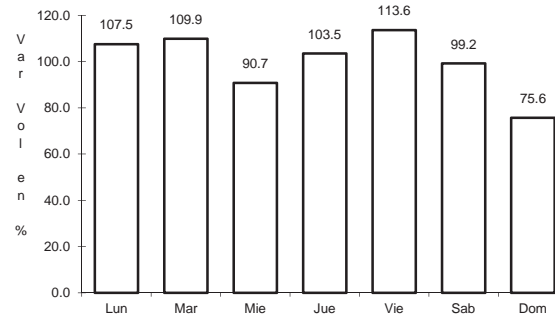
15 CARR: Matamoros - Reynosa

CLAVE: 28077

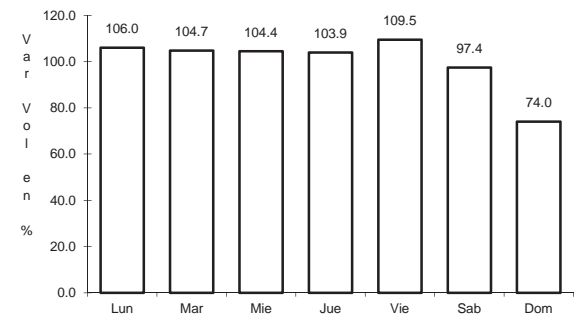
RUTA: MEX-002



Km: 0.00 Tipo: 3 Sent: 0



Km: 98.00 Tipo: 1 Sent: 1

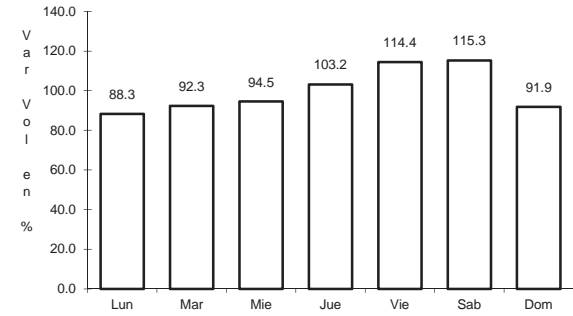
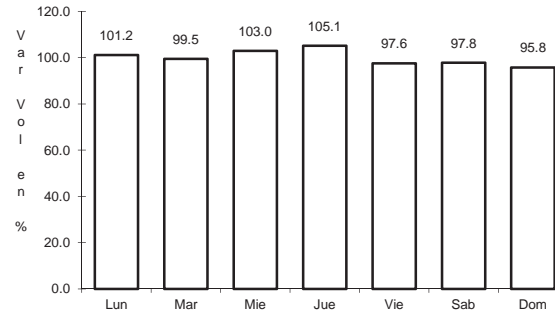
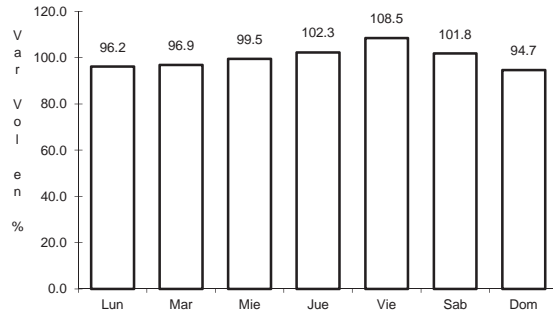


Km: 98.00 Tipo: 1 Sent: 2

16 CARR: Monterrey - Mier

CLAVE: 00127

RUTA: MEX-054



Km: 19.12 Tipo: 1 Sent: 1

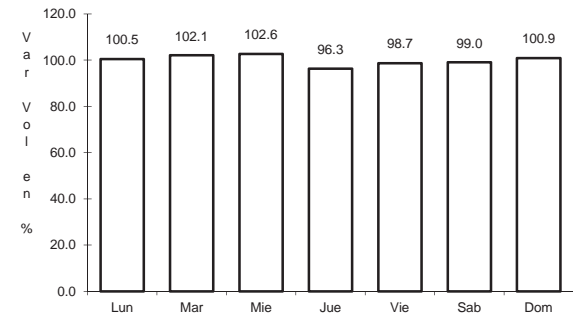
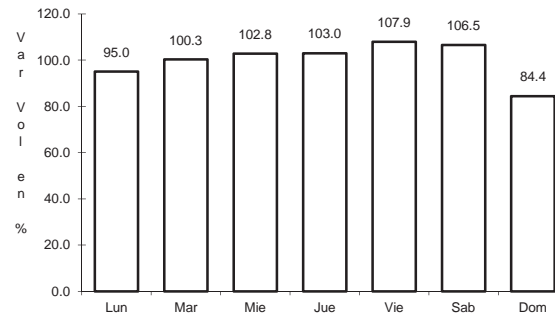
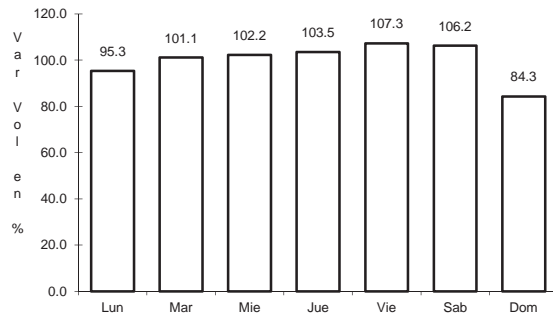
Km: 19.12 Tipo: 1 Sent: 2

Km: 156.21 Tipo: 1 Sent: 0

17 CARR: Monterrey - Nuevo Laredo (Libre)

CLAVE: 00463

RUTA: MEX-085



Km: 12.10 Tipo: 3 Sent: 1

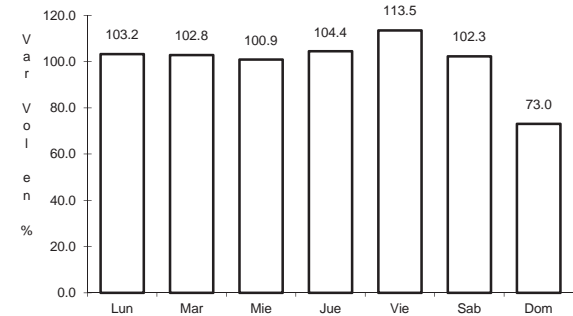
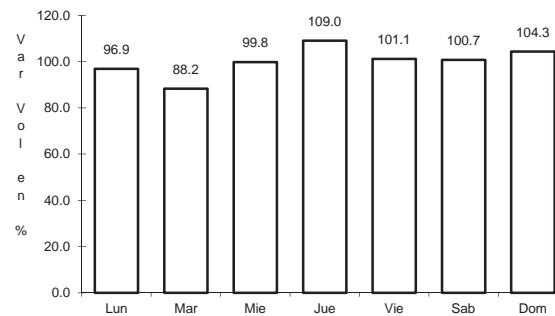
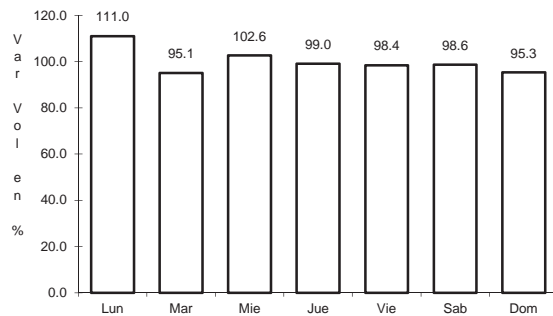
Km: 12.10 Tipo: 3 Sent: 2

Km: 124.40 Tipo: 3 Sent: 0

18 CARR: Monterrey - Reynosa (Libre)

CLAVE: 00088

RUTA: MEX-040



Km: 19.10 Tipo: 1 Sent: 1

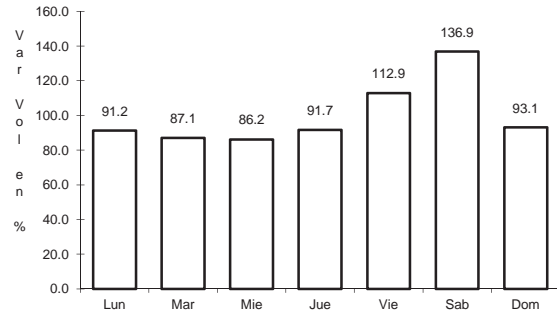
Km: 19.10 Tipo: 1 Sent: 2

Km: 125.00 Tipo: 1 Sent: 0

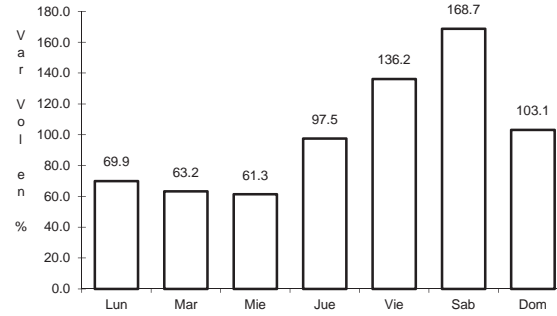
19 CARR: Paras - Nueva Ciudad Guerrero

CLAVE: 00476

ruta: MEX-030



Km: 0.00 Tipo: 3 Sent: 0

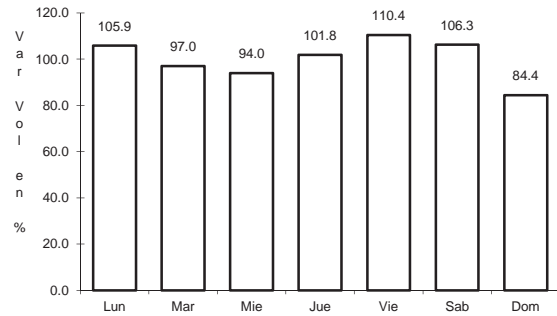


Km: 32.00 Tipo: 1 Sent: 0

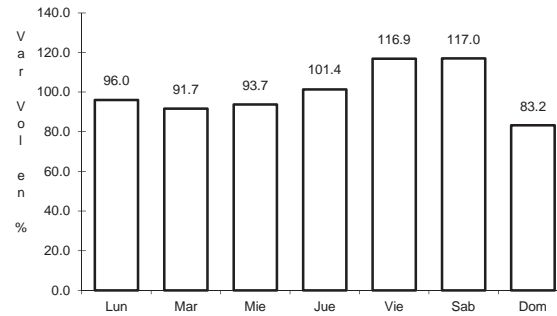
20 CARR: Piedras Negras - Nuevo Laredo

CLAVE: 00503

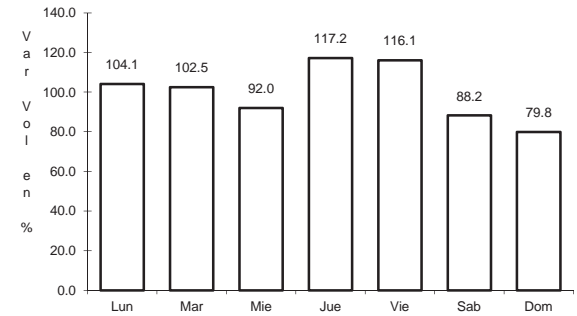
ruta: MEX-002



Km: 0.00 Tipo: 3 Sent: 1



Km: 0.00 Tipo: 3 Sent: 2

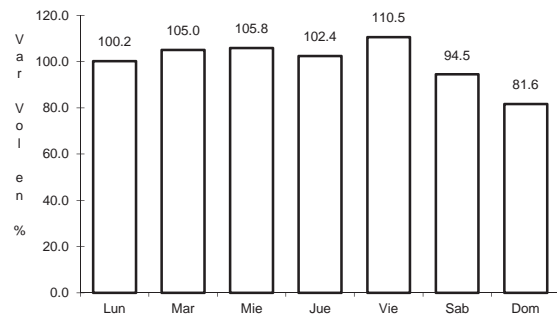


Km: 134.00 Tipo: 3 Sent: 0

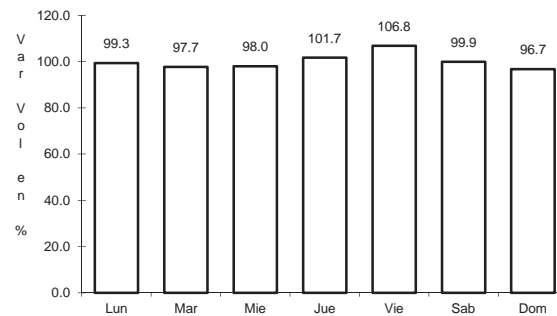
21 CARR: Ramal de Acceso a Puente Anzaldúas

CLAVE: 28619

ruta: MEX



Km: 0.00 Tipo: 3 Sent: 1

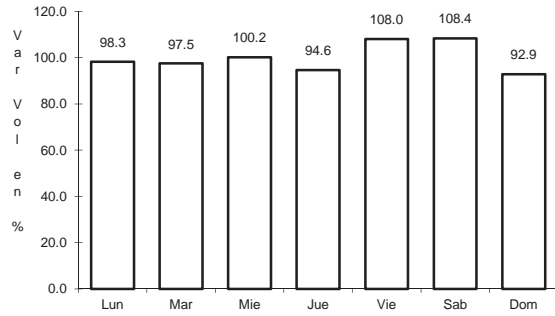


Km: 0.00 Tipo: 3 Sent: 2

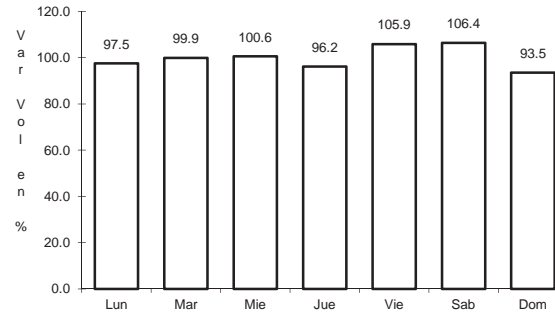
22 CARR: Reynosa - Nuevo Laredo

CLAVE: 28076

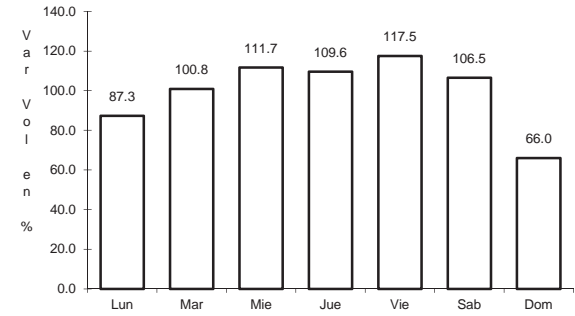
RUTA: MEX-002



Km: 0.00 Tipo: 3 Sent: 1



Km: 0.00 Tipo: 3 Sent: 2

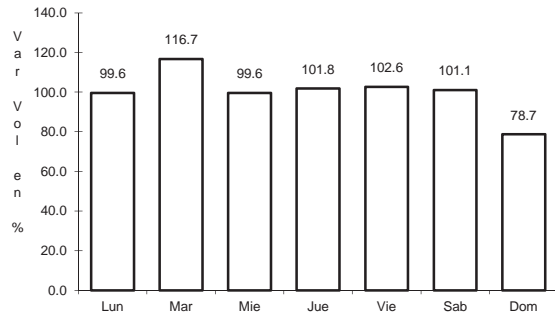


Km: 221.08 Tipo: 1 Sent: 0

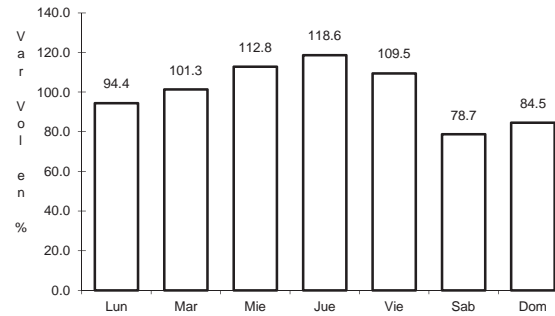
23 CARR: Soto La Marina - La Coma

CLAVE: 28052

RUTA: MEX-180



Km: 0.00 Tipo: 3 Sent: 0

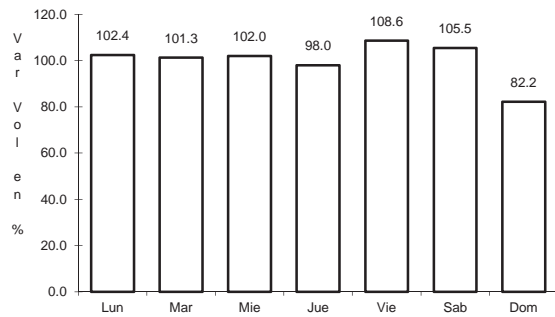


Km: 86.00 Tipo: 1 Sent: 0

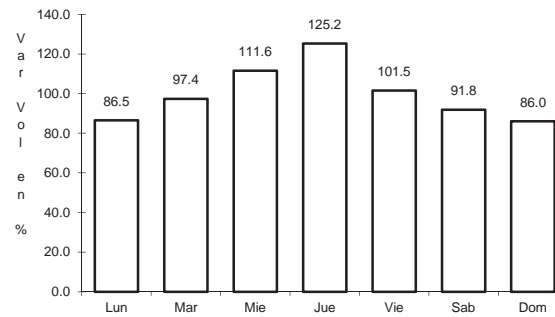
24 CARR: Tampico - Cd. Mante

CLAVE: 28163

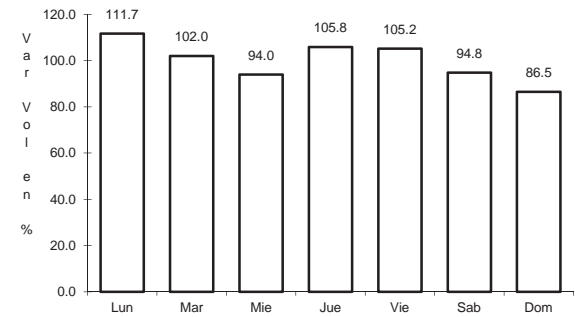
RUTA: MEX-080



Km: 14.79 Tipo: 1 Sent: 1



Km: 14.79 Tipo: 1 Sent: 2

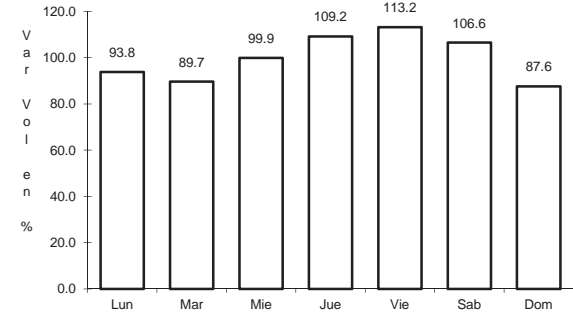
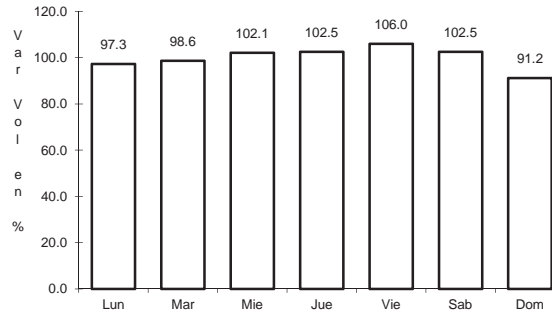
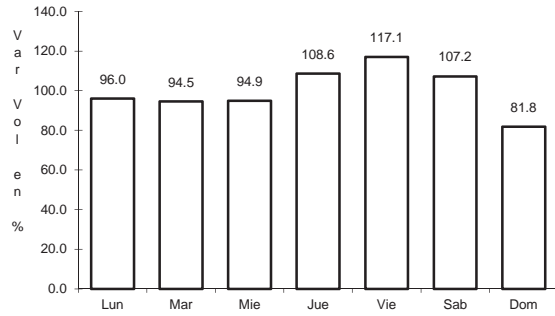


Km: 155.00 Tipo: 1 Sent: 0

25 CARR: Túxpam - Tampico

CLAVE: 00529

ruta: MEX-180



Km: 0.00 Tipo: 3 Sent: 0

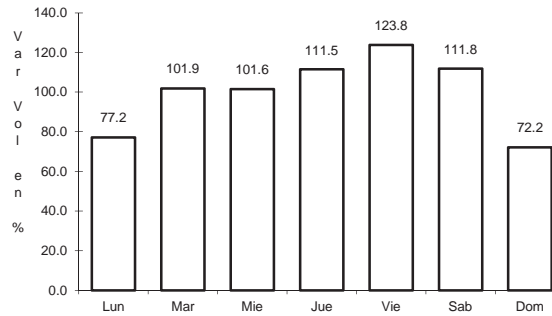
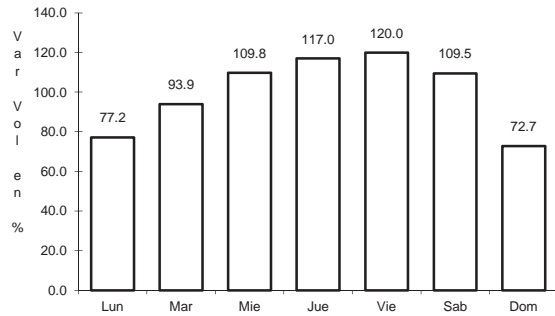
Km: 78.60 Tipo: 1 Sent: 0

Km: 186.85 Tipo: 3 Sent: 0

26 CARR: Libramiento Poniente de Tampico (Cuota)

CLAVE: 28051

ruta: MEX-070D



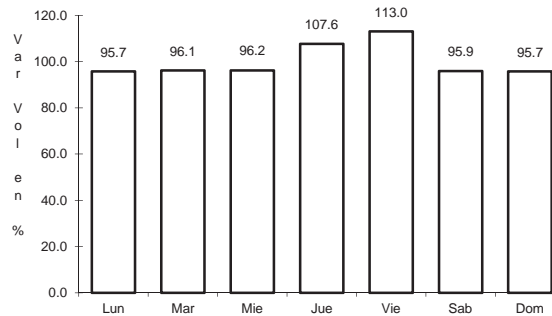
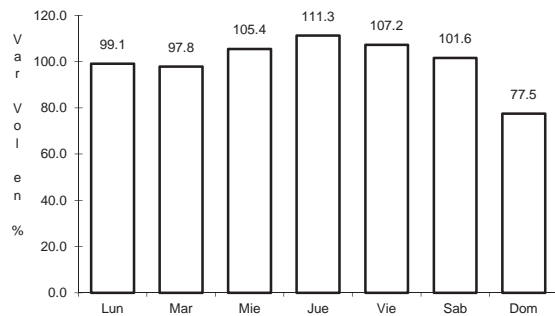
Km: 0.00 Tipo: 3 Sent: 0

Km: 12.00 Tipo: 1 Sent: 0

27 CARR: Matamoros - Reynosa (Cuota)

CLAVE: 28079

ruta: MEX-002D



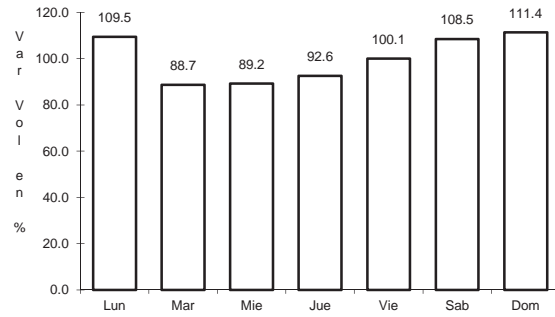
Km: 0.00 Tipo: 3 Sent: 1

Km: 0.00 Tipo: 3 Sent: 2

28 CARR: Aldama - Barra El Tordo

CLAVE: 28620

RUTA: TAM



Km: 0.00

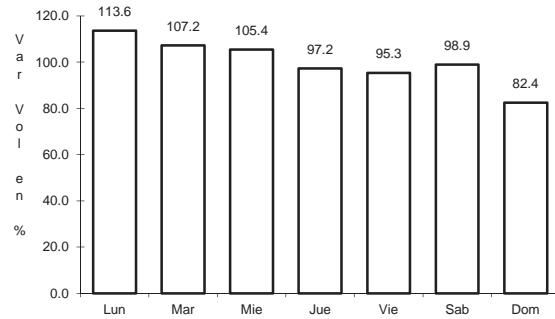
Tipo: 3

Sent: 0

29 CARR: Barretal - Nueva Villa de Padilla

CLAVE: 28001

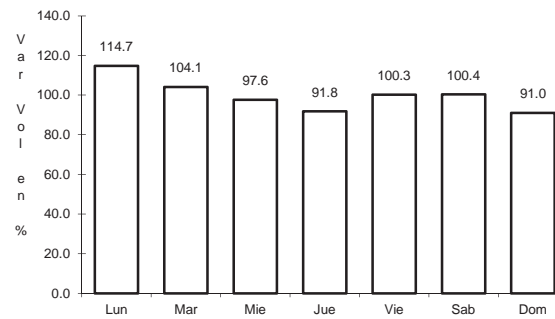
RUTA: TAM-001



Km: 0.00

Tipo: 3

Sent: 0



Km: 24.50

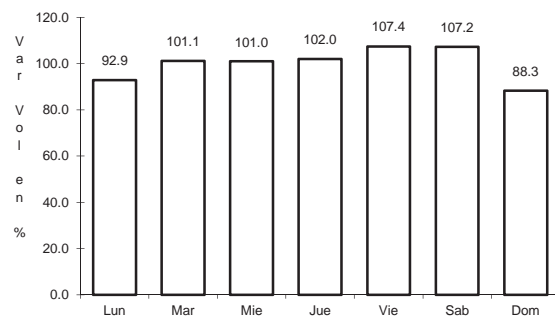
Tipo: 1

Sent: 0

30 CARR: China - Méndez

CLAVE: 00191

RUTA: NL-TAM



Km: 0.00

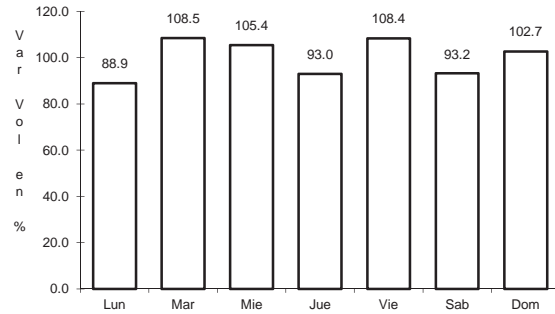
Tipo: 3

Sent: 0

31 CARR: Ébano - Estación Manuel

CLAVE: 24624

RUTA: SLP-TAM

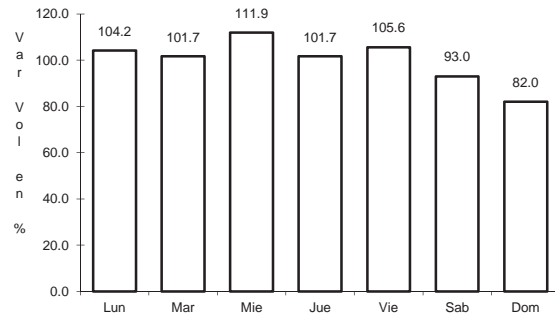


Km: 0.00 Tipo: 3 Sent: 0

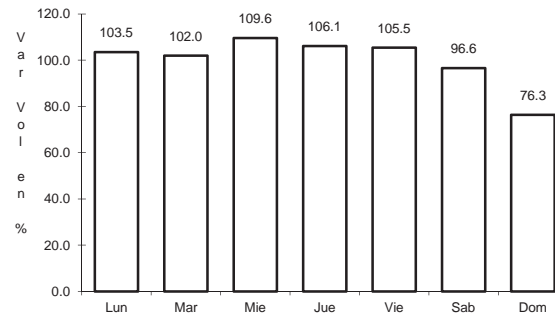
32 CARR: El Limón - Ocampo

CLAVE: 28019

RUTA: TAM-019



Km: 0.00 Tipo: 3 Sent: 0

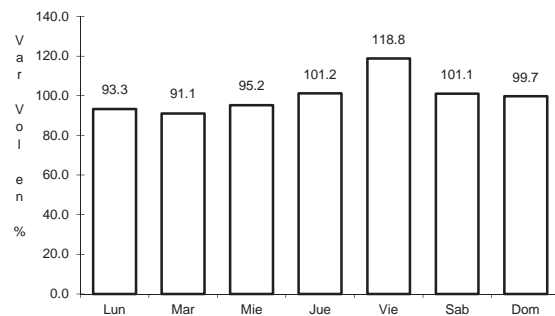


Km: 43.00 Tipo: 1 Sent: 0

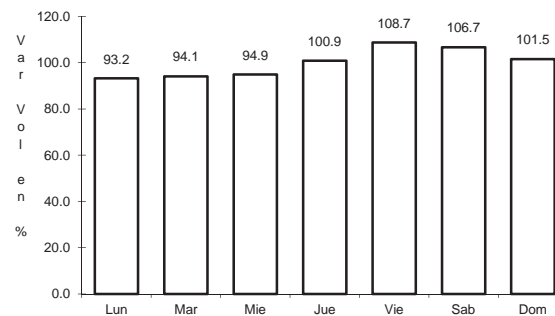
33 CARR: Ent. Huisachito - Nuevo Laredo

CLAVE: 00074

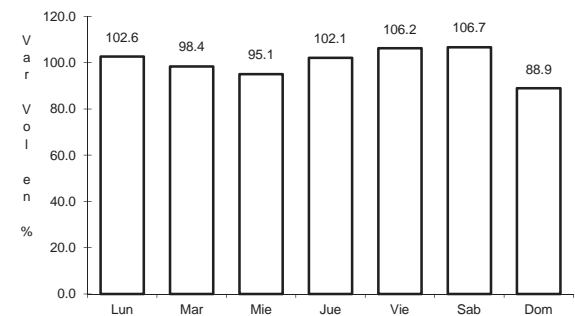
RUTA: NL-001-TAM



Km: 0.00 Tipo: 3 Sent: 0



Km: 47.00 Tipo: 1 Sent: 0

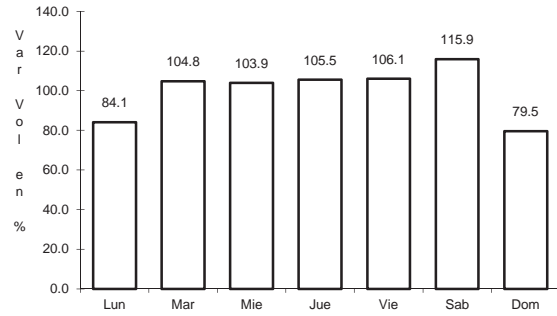


Km: 51.00 Tipo: 1 Sent: 0

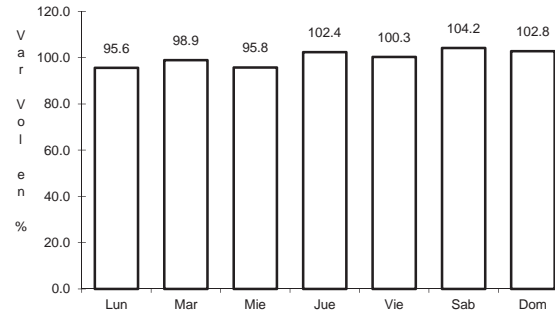
34 CARR: Ent. Las Blancas - Río Bravo

CLAVE: 28003

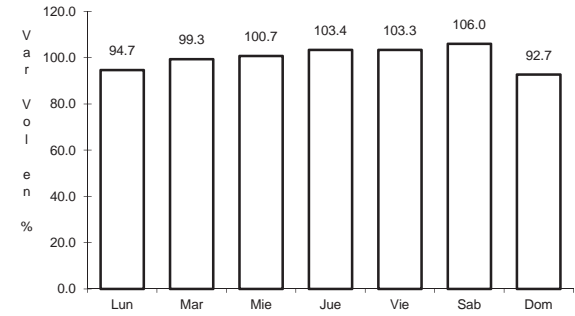
RUTA: TAM-003



Km: 0.00 Tipo: 3 Sent: 0



Km: 21.00 Tipo: 1 Sent: 1

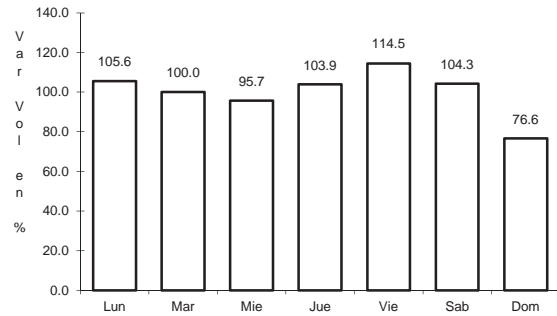


Km: 21.00 Tipo: 1 Sent: 2

35 CARR: La Joya - Méndez

CLAVE: 28623

RUTA: TAM

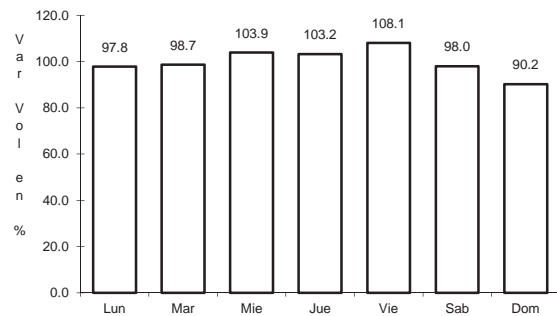


Km: 0.00 Tipo: 3 Sent: 0

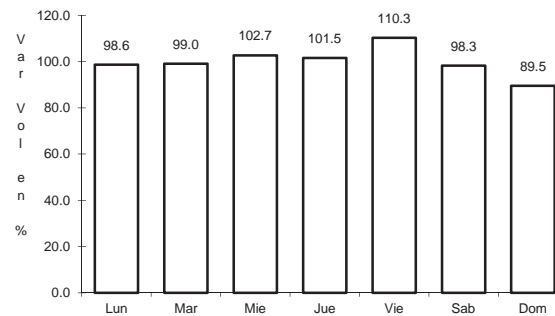
36 CARR: Libramiento de Cd. Victoria

CLAVE: 28282

RUTA: TAM



Km: 25.90 Tipo: 1 Sent: 1

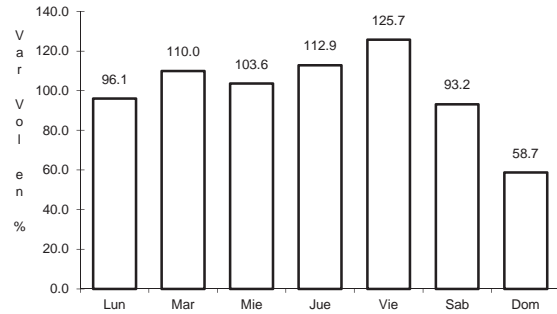


Km: 25.90 Tipo: 1 Sent: 2

37 CARR: Libramiento de Mier

CLAVE: 28282

RUTA: TAMPS



Km: 0.00

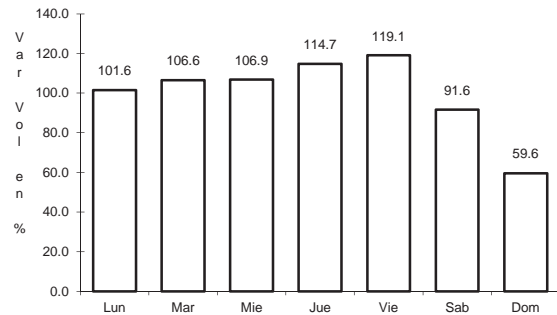
Tipo: 3

Sent: 0

38 CARR: Libramiento de Nuevo Laredo

CLAVE: 28030

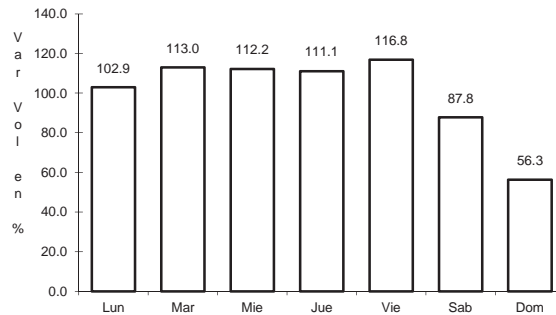
RUTA: TAM



Km: 0.00

Tipo: 3

Sent: 1



Km: 0.00

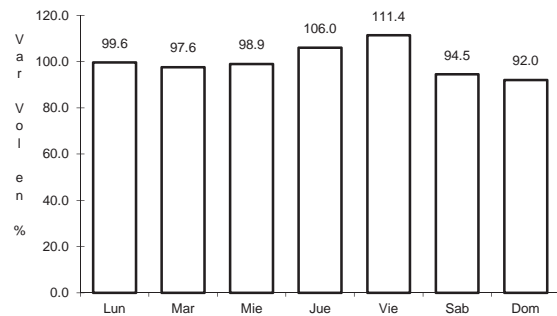
Tipo: 3

Sent: 2

39 CARR: Libramiento de Nuevo Laredo II

CLAVE: 28626

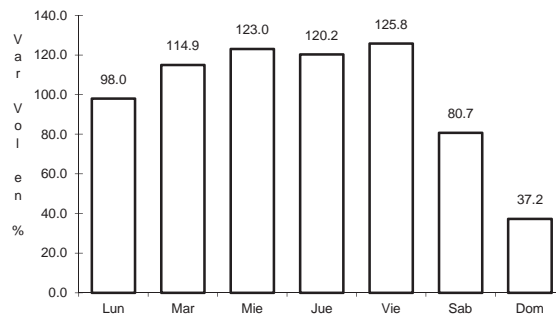
RUTA: TAM



Km: 0.00

Tipo: 3

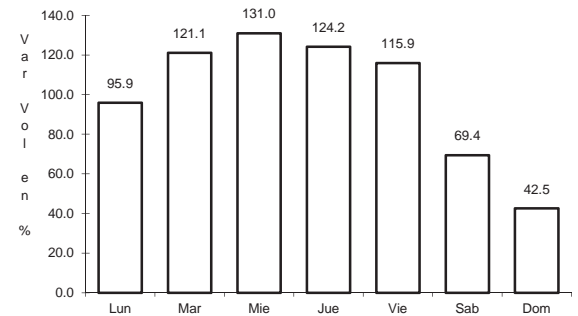
Sent: 0



Km: 32.20

Tipo: 1

Sent: 1



Km: 32.20

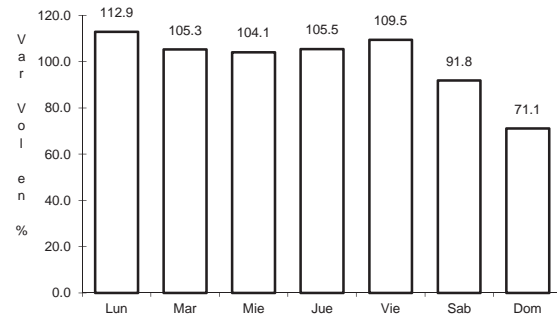
Tipo: 1

Sent: 2

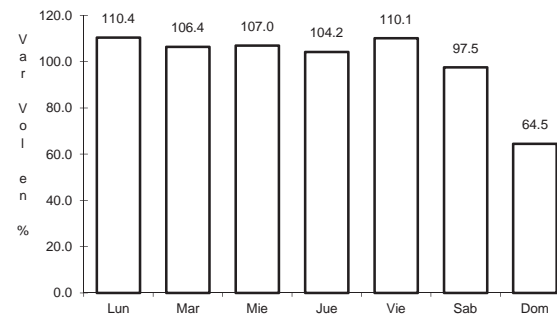
40 CARR: Libramiento de Río Bravo

CLAVE: 28002

RUTA: TAM



Km: 0.00 Tipo: 3 Sent: 1

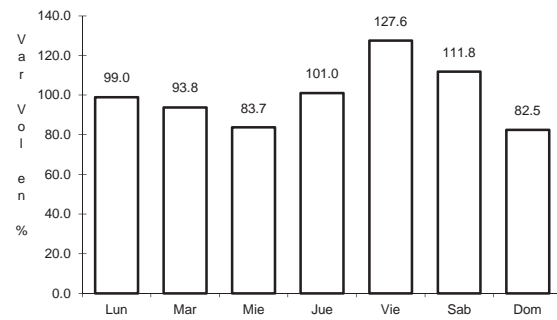


Km: 0.00 Tipo: 3 Sent: 2

41 CARR: Los Guerra - Los Herreras

CLAVE: 19031

RUTA: TAM-NL

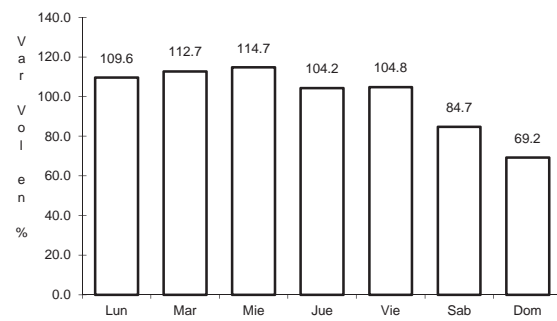


Km: 73.00 Tipo: 1 Sent: 0

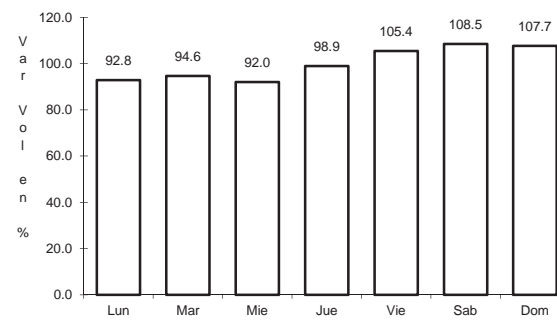
42 CARR: Peña Blanca - Cd. Camargo

CLAVE: 00102

RUTA: NL-TAM



Km: 0.00 Tipo: 3 Sent: 0

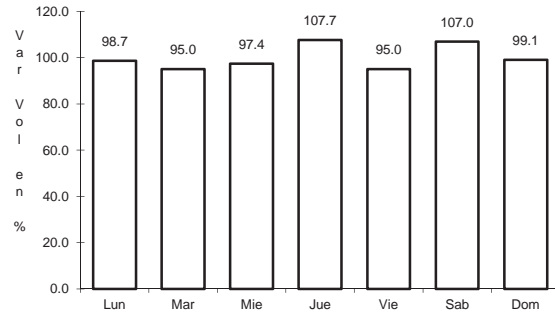


Km: 65.00 Tipo: 1 Sent: 0

43 CARR: Potrero Nuevo - Rancho El Mezquital

CLAVE: 28615

RUTA: TAM



Km: 0.00

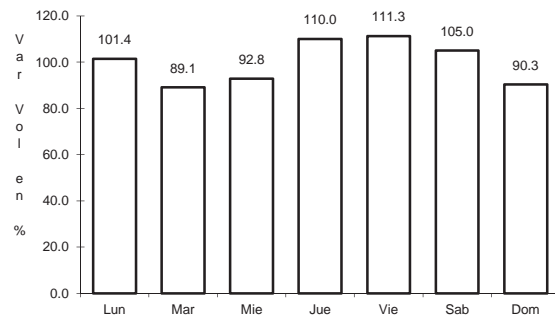
Tipo: 3

Sent: 0

44 CARR: Ramal a Gómez Farías

CLAVE: 28020

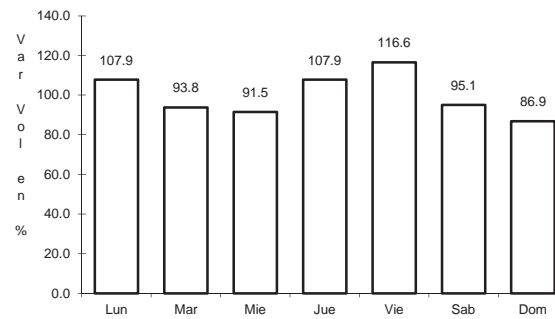
RUTA: TAM-020



Km: 0.00

Tipo: 3

Sent: 0



Km: 11.00

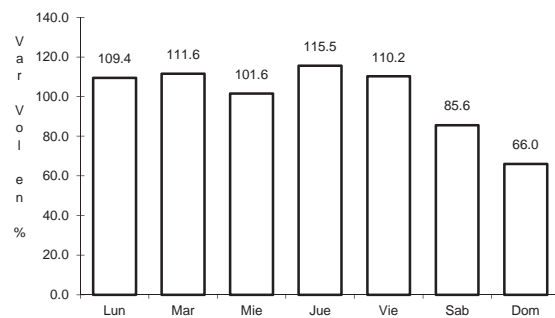
Tipo: 1

Sent: 0

45 CARR: Ramal a Xicoténcatl

CLAVE: 28619

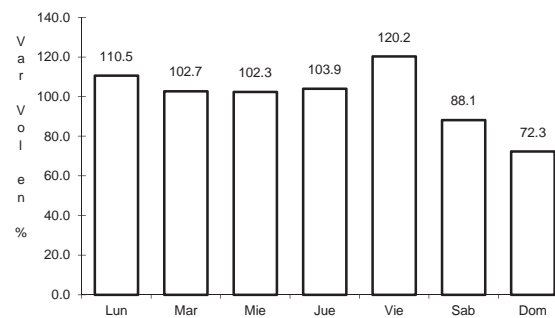
RUTA: TAM



Km: 0.00

Tipo: 3

Sent: 0



Km: 13.00

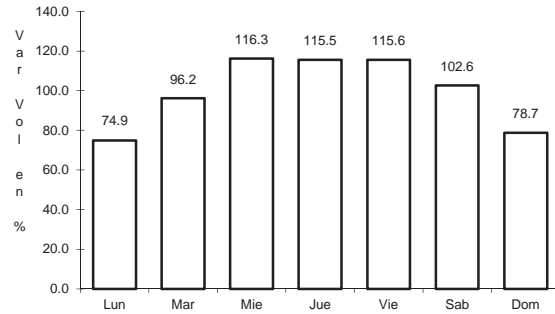
Tipo: 1

Sent: 0

46 CARR: San Fernando - Carboneras

CLAVE: 28618

RUTA: TAM

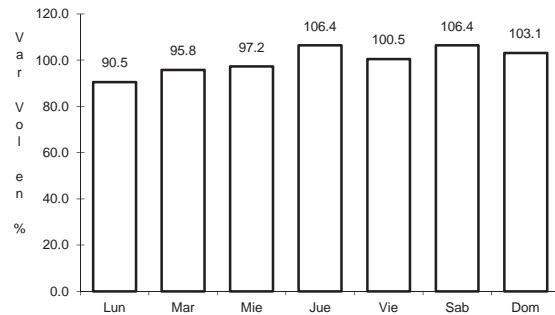


Km: 0.00 Tipo: 3 Sent: 0

47 CARR: Soto La Marina - La Pesca

CLAVE: 28049

RUTA: TAM-070

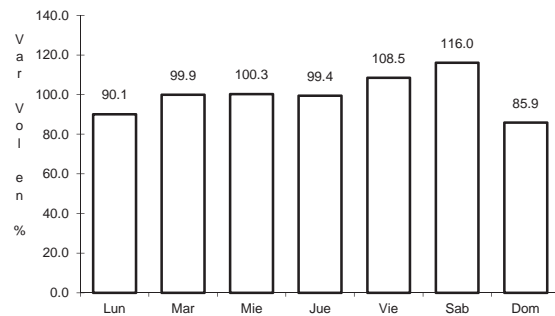


Km: 0.00 Tipo: 3 Sent: 0

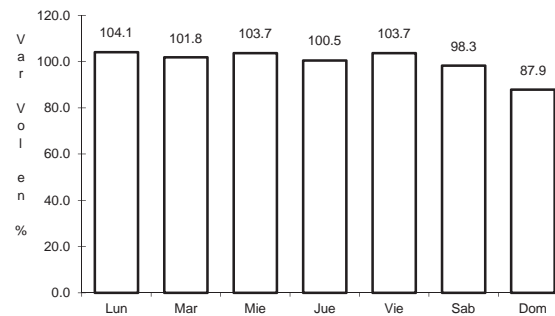
48 CARR: T. C. (Valle Hermoso - Empalme) - Matamoros

CLAVE: 28005

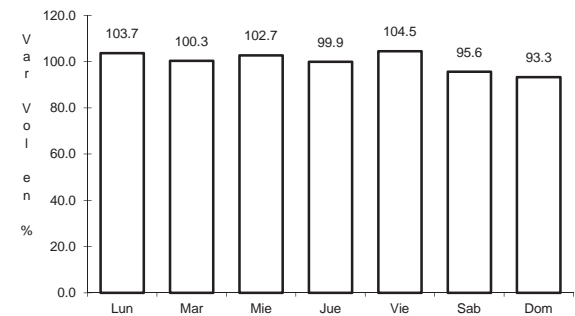
RUTA: TAM-005



Km: 0.00 Tipo: 3 Sent: 0



Km: 33.90 Tipo: 1 Sent: 1

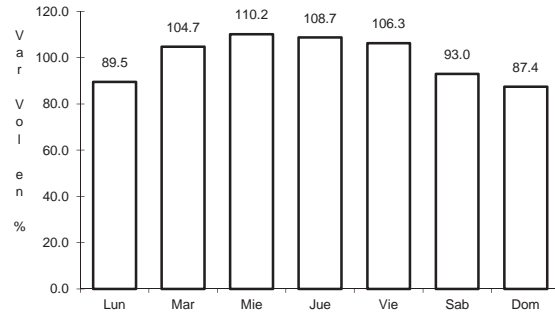


Km: 33.90 Tipo: 1 Sent: 2

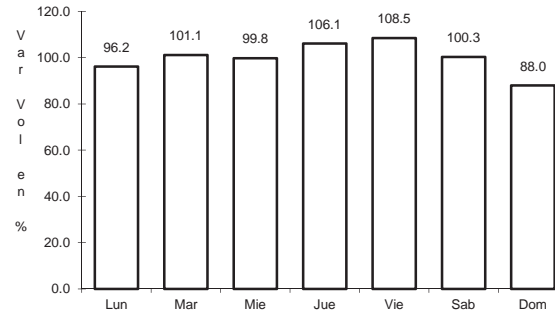
49 CARR: T. C. Libramiento Cd. Victoria - San Antonio

CLAVE:

RUTA: TAM-126



Km: 0.00 Tipo: 3 Sent: 0

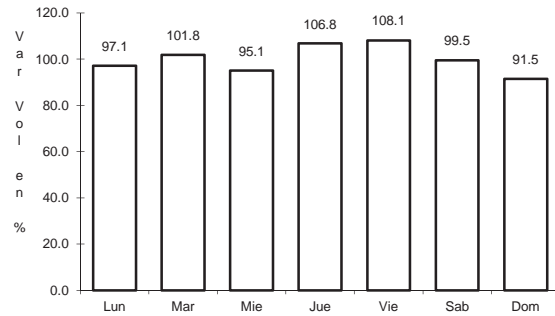


Km: 37.50 Tipo: 1 Sent: 0

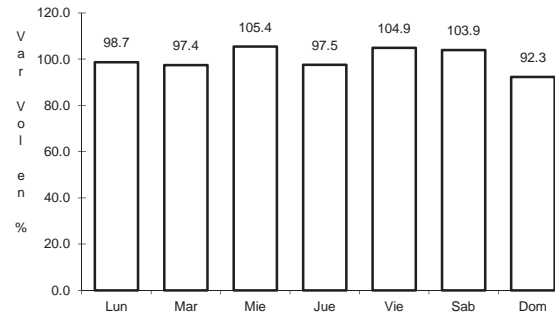
50 CARR: Valle Hermoso - Empalme

CLAVE: 28004

RUTA: TAM-004



Km: 0.00 Tipo: 3 Sent: 0

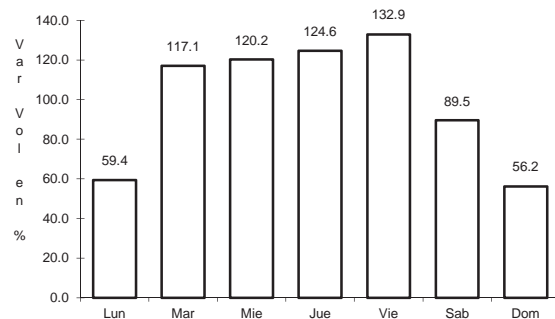


Km: 28.38 Tipo: 1 Sent: 0

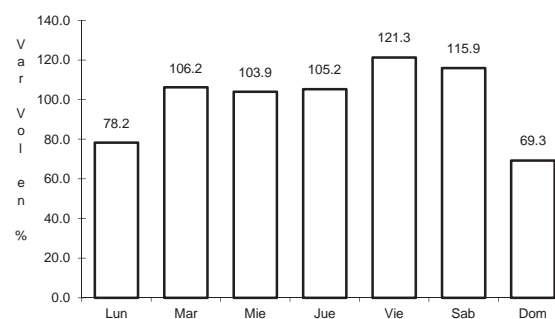
51 CARR: Valle Hermoso - Las Yescas

CLAVE: 28614

RUTA: TAM

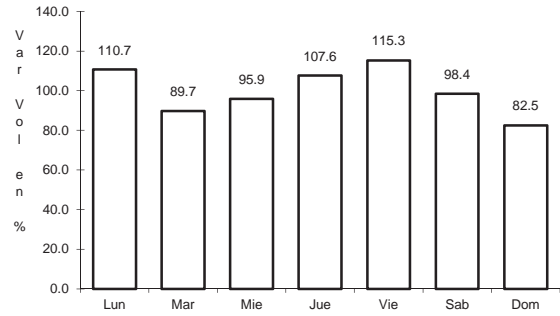


Km: 0.00 Tipo: 3 Sent: 0



Km: 26.00 Tipo: 1 Sent: 0

52 CARR: Santander Jiménez - Ent. El Ojito

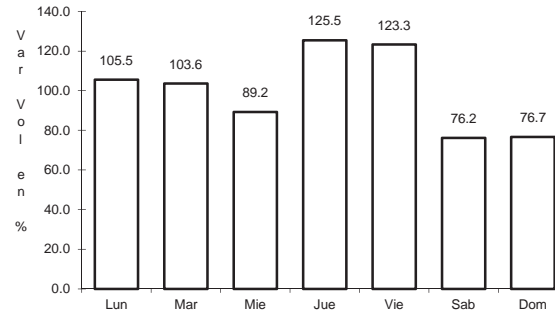


Km: 0.00

Tipo: 3

Sent: 0

CLAVE: 28579

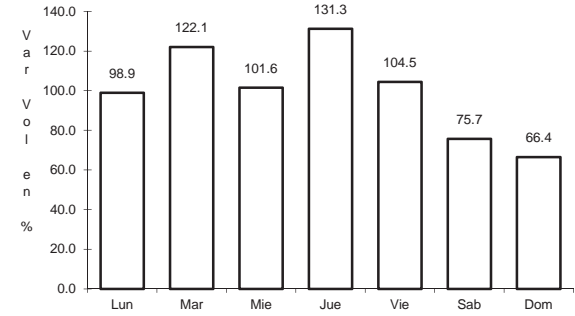


Km: 20.00

Tipo: 1

Sent: 0

RUTA: MEX-107-TAM



Km: 58.00

Tipo: 1

Sent: 0