

GUERRERO

NO. INDICE	CARRETERA	RUTA
---RED FEDERAL LIBRE---		
1	Acapulco - Zihuatanejo	MEX-200
2	Cd. Altamirano - T. C. (Zihuatanejo - La Mira)	MEX-134
3	Chilpancingo - Acapulco	MEX-095
4	Chilpancingo - Chichihualco	MEX-095
5	Chilpancingo - Jilotepec	MEX-093
6	Cuernavaca - Chilpancingo	MEX-095
7	Ent. Alpuyeca - Grutas de Cacahuamilpa	MEX-166
8	Iguala - Cd. Altamirano	MEX-051
9	La Sabana - Puerto Marqués	MEX-200
10	Las Cruces - Pinotepa Nacional	MEX-200
11	Libramiento Norte de Acapulco	MEX-095
12	Milpillas - T. C. (Acapulco - Zihuatanejo)	MEX-196
13	Ramal a Aeropuerto Zihuatanejo	MEX-200
14	Ramal a La Unión	MEX-200
15	San Juan de Los Llanos - Ometepec	MEX-200
16	Tierra Colorada - Cruz Grande	MEX-198
17	Toluca - Cd. Altamirano	MEX-134
18	Zihuatanejo - La Mira	MEX-200
---RED FEDERAL DE CUOTA---		
19	C.D. Puente de Ixtla - Iguala (Cuota)	MEX-091D
20	Cuernavaca - Acapulco (Cuota)	MEX-095D
21	Libramiento de Técpan (Cuota)	MEX-200D
22	Nueva Italia - Lázaro Cárdenas (Cuota)	MEX-014D
23	Rancho Viejo - Taxco (Cuota)	MEX-092D
24	Zacapulco - Rancho Viejo (Cuota)	MEX-092D
---RED ESTATAL LIBRE---		
25	Acapulco - Aeropuerto Acapulco	GRO
26	Ent. Potrero - Lomas de Chapultepec	GRO
27	Las Petaquillas - Quechultenango	GRO
28	Pie de La Cuesta - Barra de Coyuca	GRO
29	Ramal a Cocula	GRO
30	T. C. (Iguala - Chilpancingo) - Atenango del Río	GRO-001
31	Taxco - Ixcateopan	GRO
32	Teloloapan - Apaxtla de Castrejón	GRO
33	Tlapa de Comonfort - Marquelia	GRO
---RED ESTATAL DE CUOTA---		
34	Puerto Marqués - La Venta (Cuota)	GRO-D
---CARRETERAS INTEGRADAS POR TRAMOS FEDERALES Y ESTATALES---		
35	Toluca - Axixintla	EM-MEX-055

# 12 GUERRERO

SECRETARÍA DE COMUNICACIONES Y TRANSPORTES  
DIRECCIÓN GENERAL DE SERVICIOS TÉCNICOS



- ① --- Número Índice
- Red Federal Libre
- Red Federal Cuota
- Red Federal Integrada por Tramos Libres y de Cuota
- Red Estatal Libre
- Red Estatal Cuota
- Carreteras Integradas por Tramos Federales y Estatales

GUERRERO

1 CARR: Acapulco - Zihuatanejo

CLAVE: 12072

RUTA: MEX-200

AÑO: 2013

LUGAR	ESTACION				CLASIFICACION VEHICULAR EN PORCIENTO										COORDENADAS					
	KM	TE	SC	TDPA	M	A	B	C2	C3	T3S2	T3S3	T3S2R4	OTROS	A	B	C	K'	D	LATITUD	LONGITUD
Acapulco	0.00																			
T. Izq. Pie de La Cuesta	10.37	1	0	18278	3.0	86.2	3.4	4.0	0.7	0.7	1.2	0.4	0.4	89.2	3.4	7.4	0.064	0.502	16.896213	-99.960451
T. Izq. Pie de La Cuesta	10.37	3	0	18086	3.0	84.2	5.4	4.0	0.7	0.7	1.2	0.4	0.4	87.2	5.4	7.4	0.064	0.502	16.909779	-99.962203
T. Der. Libramiento de Acapulco	21.37	3	0	8188	2.6	81.0	5.0	4.2	1.2	4.1	1.0	0.3	0.6	83.6	5.0	11.4	0.075	0.504	16.961627	-99.978053
Coyuca de Benítez	33.60	3	0	9131	3.7	80.7	3.7	4.1	1.2	4.1	1.2	0.6	0.7	84.4	3.7	11.9	0.065	0.503	17.009504	-100.095341
T. Der. Atoyac de Álvarez	77.85	3	0	9207	3.4	81.9	3.3	3.7	1.1	4.4	1.1	0.3	0.8	85.3	3.3	11.4	0.068	0.503	17.160820	-100.435222
T. C. Libramiento de Técpan (Cuota)	102.00	1	0	6119	3.4	80.1	3.9	5.5	1.2	3.3	1.6	0.5	0.5	83.5	3.9	12.6	0.076	0.500	17.188703	-100.613896
Técpan de Galeana	103.60	1	0	5161	5.0	80.5	4.2	6.5	0.6	2.4	0.4	0.1	0.3	85.5	4.2	10.3	0.072	0.502	17.202332	-100.628076
Técpan de Galeana	103.60	3	0	11021	5.1	77.7	5.9	5.0	1.3	3.1	0.7	0.2	1.0	82.8	5.9	11.3	0.073	0.502	17.235970	-100.627027
T. C. Libramiento de Técpan (Cuota)	110.20	3	0	5473	4.8	76.6	7.1	6.3	1.0	2.8	0.8	0.3	0.3	81.4	7.1	11.5	0.082	0.500	17.205345	-100.659250
Papanao	162.25	1	0	4192	3.9	75.7	5.7	6.5	1.4	3.2	1.2	1.3	1.1	79.6	5.7	14.7	0.063	0.508	17.318836	-101.044785
Petatlán	206.30	1	0	4817	4.4	73.8	5.5	7.9	2.0	3.0	1.8	1.0	0.6	78.2	5.5	16.3	0.070	0.501	17.528449	-101.261207
Zihuatanejo	242.90	1	1	7491	2.5	82.5	5.3	7.5	0.5	0.9	0.5	0.1	0.2	85.0	5.3	9.7	0.081	0.501	17.646136	-101.522483
Zihuatanejo	242.90	1	2	7461	3.4	80.5	5.7	8.2	0.5	0.9	0.5	0.1	0.2	83.9	5.7	10.4	0.082	0.501	17.646141	-101.522473

2 CARR: Cd. Altamirano - T. C. (Zihuatanejo - La Mira)

CLAVE: 12422

RUTA: MEX-134

AÑO: 2013

LUGAR	ESTACION				CLASIFICACION VEHICULAR EN PORCIENTO										COORDENADAS					
	KM	TE	SC	TDPA	M	A	B	C2	C3	T3S2	T3S3	T3S2R4	OTROS	A	B	C	K'	D	LATITUD	LONGITUD
Cd. Altamirano	0.00	3	1	9520	3.4	92.7	0.4	2.5	0.3	0.2	0.4	0.0	0.1	96.1	0.4	3.5	0.108	0.512	18.333936	-100.688256
Cd. Altamirano	0.00	3	2	9976	2.9	93.1	0.4	2.6	0.3	0.2	0.4	0.0	0.1	96.0	0.4	3.6	0.107	0.512	18.333901	-100.688305
T. Der. Zirándaro	15.00	3	0	3175	1.6	93.3	0.2	3.3	0.2	1.1	0.2	0.0	0.1	94.9	0.2	4.9	0.074	0.521	18.318057	-100.785872
T. C. Zihuatanejo - La Mira	185.30	1	0	1489	4.9	77.6	4.9	7.2	1.6	2.7	1.1	0.0	0.0	82.5	4.9	12.6	0.075	0.500	17.732248	-101.603353

3 CARR: Chilpancingo - Acapulco

CLAVE: 12045

RUTA: MEX-095

AÑO: 2013

LUGAR	ESTACION				CLASIFICACION VEHICULAR EN PORCIENTO										COORDENADAS					
	KM	TE	SC	TDPA	M	A	B	C2	C3	T3S2	T3S3	T3S2R4	OTROS	A	B	C	K'	D	LATITUD	LONGITUD
Chilpancingo	0.00																			
T. C. Cuernavaca - Acapulco (Cuota)	4.20	1	1	15543	2.2	88.3	1.1	4.4	1.0	1.5	0.7	0.4	0.4	90.5	1.1	8.4	0.086	0.517	17.521731	-99.485519
T. C. Cuernavaca - Acapulco (Cuota)	4.20	1	2	16669	1.8	87.8	1.3	4.7	1.1	1.6	0.9	0.4	0.4	89.6	1.3	9.1	0.078	0.517	17.521083	-99.484535
T. C. Cuernavaca - Acapulco (Cuota)	4.20	3	1	10669	2.0	89.5	0.9	4.2	1.0	1.0	1.0	0.1	0.3	91.5	0.9	7.6	0.095	0.505	17.509241	-99.476734
T. C. Cuernavaca - Acapulco (Cuota)	4.20	3	2	10444	1.8	88.9	1.0	4.5	1.2	1.1	1.1	0.1	0.3	90.7	1.0	8.3	0.107	0.505	17.509337	-99.476615
Petaquillas	12.01	1	1	9592	1.8	90.4	0.3	4.3	0.9	1.2	0.7	0.1	0.3	92.2	0.3	7.5	0.093	0.503	17.497469	-99.467628
Petaquillas	12.01	1	2	9470	1.6	89.7	0.3	4.8	1.1	1.2	0.9	0.1	0.3	91.3	0.3	8.4	0.094	0.503	17.497569	-99.467485

GUERRERO

3 CARR: Chilpancingo - Acapulco

CLAVE: 12045

RUTA: MEX-095

AÑO: 2013

LUGAR	ESTACION				CLASIFICACION VEHICULAR EN PORCIENTO													COORDENADAS		
	KM	TE	SC	TDPA	M	A	B	C2	C3	T3S2	T3S3	T3S2R4	OTROS	A	B	C	K'	D	LATITUD	LONGITUD
Pelaquillas	12.01	3	0	6772	1.6	83.7	1.1	5.7	2.1	3.2	1.4	0.5	0.7	85.3	1.1	13.6	0.082	0.504	17.481330	-99.457189
El Ocotito	50.68	1	0	5982	4.5	82.6	1.1	4.7	2.2	3.1	1.1	0.2	0.5	87.1	1.1	11.8	0.070	0.507	17.252757	-99.508101
El Ocotito	50.68	3	0	6190	2.4	86.3	1.4	4.3	1.9	1.9	1.1	0.2	0.5	88.7	1.4	9.9	0.076	0.509	17.233851	-99.518087
T. Izq. Tierra Colorada Inicia	61.18	1	0	5765	1.8	84.4	1.3	3.4	3.6	2.4	1.7	0.6	0.8	86.2	1.3	12.5	0.074	0.516	17.176117	-99.519647
T. Izq. Tierra Colorada Termina	65.14	3	0	4656	1.9	83.5	1.4	5.5	2.9	2.6	1.4	0.4	0.4	85.4	1.4	13.2	0.065	0.501	17.174220	-99.547234
X. C. Cuernavaca - Acapulco (Cuota)	70.10	3	0	4201	1.5	86.6	1.2	5.1	2.3	1.7	1.0	0.2	0.4	88.1	1.2	10.7	0.073	0.501	17.177833	-99.556003
T. Der. Pablo Galeana	88.15	3	0	3419	0.4	86.5	1.0	3.9	1.4	3.3	2.0	0.6	0.9	86.9	1.0	12.1	0.072	0.505	17.119072	-99.697574
T. Der. Libramiento Norte de Acapulco	112.80	1	0	9067	2.6	84.5	0.8	3.1	1.7	3.3	2.0	0.8	1.2	87.1	0.8	12.1	0.057	0.503	16.984456	-99.810305
T. Der. Libramiento Norte de Acapulco	112.80	3	0	12386	1.6	85.0	1.0	7.8	1.7	1.2	1.2	0.3	0.2	86.6	1.0	12.4	0.067	0.504	16.970926	-99.810652
Acapulco	132.67																			

4 CARR: Chilpancingo - Chichihualco

CLAVE: 12426

RUTA: MEX-095

AÑO: 2013

LUGAR	ESTACION				CLASIFICACION VEHICULAR EN PORCIENTO													COORDENADAS		
	KM	TE	SC	TDPA	M	A	B	C2	C3	T3S2	T3S3	T3S2R4	OTROS	A	B	C	K'	D	LATITUD	LONGITUD
T. C. Cuernavaca - Chilpancingo	0.00	3	0	3208	2.1	80.7	0.9	9.5	2.3	1.7	1.9	0.3	0.6	82.8	0.9	16.3	0.085	0.504	17.590747	-99.518298
T. Der. El Palmar	15.10	1	0	1920	1.4	88.7	2.0	4.4	0.9	1.3	1.3	0.0	0.0	90.1	2.0	7.9	0.072	0.503	17.643728	-99.603120
Chichihualco	26.30	1	0	1204	3.7	84.7	1.9	5.7	1.4	2.0	0.3	0.1	0.2	88.4	1.9	9.7	0.095	0.500	17.646918	-99.668359

5 CARR: Chilpancingo - Jilotepec

CLAVE: 12002

RUTA: MEX-093

AÑO: 2013

LUGAR	ESTACION				CLASIFICACION VEHICULAR EN PORCIENTO													COORDENADAS		
	KM	TE	SC	TDPA	M	A	B	C2	C3	T3S2	T3S3	T3S2R4	OTROS	A	B	C	K'	D	LATITUD	LONGITUD
Chilpancingo	0.00	3	0	6057	3.6	87.0	0.9	3.6	0.9	2.1	1.0	0.3	0.6	90.6	0.9	8.5	0.076	0.511	17.550293	-99.485179
T. Der. Tixtla de Guerrero	16.30	3	0	6500	4.3	85.7	1.0	2.5	0.9	3.1	1.1	0.7	0.7	90.0	1.0	9.0	0.084	0.502	17.578672	-99.392920
T. Izq. Almolonga	28.20	3	0	3384	1.3	86.4	1.9	4.2	1.7	2.6	1.2	0.3	0.4	87.7	1.9	10.4	0.081	0.501	17.604528	-99.310026
Chilapa de Álvarez	53.62	3	0	5314	8.1	80.0	0.8	6.2	0.4	2.7	1.1	0.2	0.5	88.1	0.8	11.1	0.086	0.509	17.593413	-99.158833
Tlapa de Comonfort	178.50	1	0	4990	3.1	83.7	1.1	6.3	0.8	3.0	1.2	0.3	0.5	86.8	1.1	12.1	0.072	0.512	17.539634	-98.606520
Huamuxtltlán	200.63	1	0	3781	3.5	81.7	1.6	7.9	1.1	2.6	1.2	0.0	0.4	85.2	1.6	13.2	0.075	0.515	17.792768	-98.561546
Xochihuehuatlán	216.80	1	0	1747	1.5	79.2	4.4	6.4	3.4	2.8	2.0	0.1	0.2	80.7	4.4	14.9	0.074	0.502	17.903187	-98.495674
Jilotepec	235.00	1	0	1652	2.1	75.0	3.0	10.3	4.0	3.5	1.5	0.1	0.5	77.1	3.0	19.9	0.067	0.507	17.964107	-98.478479

GUERRERO

6 CARR: Cuernavaca - Chilpancingo

CLAVE: 00042

RUTA: MEX-095

AÑO: 2013

LUGAR	ESTACION				CLASIFICACION VEHICULAR EN PORCIENTO										COORDENADAS					
	KM	TE	SC	TDPA	M	A	B	C2	C3	T3S2	T3S3	T3S2R4	OTROS	A	B	C	K'	D	LATITUD	LONGITUD
Cuernavaca	0.00																			
T. Izq. Chipitlán	4.85	1	1	15488	1.6	84.0	0.5	7.8	0.2	1.4	3.0	0.6	0.9	85.6	0.5	13.9	0.067	0.517	18.894395	-99.228745
T. Izq. Chipitlán	4.85	1	2	14451	1.3	83.1	0.6	8.3	0.2	1.6	3.4	0.6	0.9	84.4	0.6	15.0	0.071	0.517	18.894395	-99.228745
T. Izq. Chipitlán	4.85	3	1	9471	2.3	79.9	1.3	11.7	0.8	0.9	1.8	0.6	0.7	82.2	1.3	16.5	0.069	0.524	18.879425	-99.229460
T. Izq. Chipitlán	4.85	3	2	10409	2.7	77.6	1.5	13.1	0.8	1.0	1.9	0.7	0.7	80.3	1.5	18.2	0.068	0.524	18.879425	-99.229459
Temixco	9.80	1	1	11791	2.2	82.6	2.3	10.6	0.5	0.5	1.0	0.0	0.3	84.8	2.3	12.9	0.079	0.507	18.860792	-99.224848
Temixco	9.80	1	2	12142	1.6	81.4	2.6	11.9	0.5	0.5	1.2	0.0	0.3	83.0	2.6	14.4	0.088	0.507	18.860794	-99.224841
Temixco	9.80	3	1	14544	3.0	80.3	2.3	11.4	0.7	0.8	1.1	0.1	0.3	83.3	2.3	14.4	0.060	0.514	18.849994	-99.223549
Temixco	9.80	3	2	15357	3.1	78.9	2.5	12.1	0.9	0.8	1.3	0.1	0.3	82.0	2.5	15.5	0.067	0.514	18.850001	-99.223561
Acatlipa	12.43	1	1	11572	4.3	82.6	2.2	9.5	0.5	0.3	0.4	0.0	0.2	86.9	2.2	10.9	0.081	0.509	18.830212	-99.227390
Acatlipa	12.43	1	2	11141	4.0	82.1	2.3	10.2	0.5	0.3	0.4	0.0	0.2	86.1	2.3	11.6	0.084	0.509	18.830211	-99.227391
Acatlipa	12.43	3	1	8421	3.1	80.7	3.2	8.1	0.2	1.4	2.4	0.3	0.6	83.8	3.2	13.0	0.073	0.508	18.825301	-99.229819
Acatlipa	12.43	3	2	8146	3.0	78.8	3.5	9.2	0.2	1.6	2.8	0.3	0.6	81.8	3.5	14.7	0.072	0.508	18.825301	-99.229818
T. Izq. Emiliano Zapata	13.50	1	1	9971	3.7	85.6	0.1	7.3	0.3	1.3	1.2	0.1	0.4	89.3	0.1	10.6	0.078	0.512	18.821008	-99.232226
T. Izq. Emiliano Zapata	13.50	1	2	10477	3.6	84.8	0.1	7.9	0.3	1.4	1.4	0.1	0.4	88.4	0.1	11.5	0.076	0.512	18.821008	-99.232226
T. Izq. Emiliano Zapata	13.50	3	0	8165	3.4	86.3	0.1	8.1	0.3	0.8	0.8	0.0	0.2	89.7	0.1	10.2	0.085	0.519	18.816220	-99.233193
T. Izq. Emiliano Zapata	13.50	3	0	7573	3.6	86.2	0.1	8.0	0.3	0.8	0.8	0.0	0.2	89.8	0.1	10.1	0.085	0.519	18.816220	-99.233193
T. Izq. Xochitepec	16.05	1	1	8490	3.7	85.4	0.7	8.3	1.0	0.9	0.0	0.0	0.0	89.1	0.7	10.2	0.112	0.508	18.801621	-99.237301
T. Izq. Xochitepec	16.05	1	2	8224	2.3	85.6	0.8	9.3	1.1	0.9	0.0	0.0	0.0	87.9	0.8	11.3	0.106	0.508	18.801620	-99.237301
T. Izq. Xochitepec (Real del Puente)	16.05	3	1	5474	3.1	84.0	2.5	9.1	0.5	0.4	0.2	0.0	0.2	87.1	2.5	10.4	0.077	0.522	18.797092	-99.240884
T. Izq. Xochitepec (Real del Puente)	16.05	3	2	5965	2.8	82.6	2.7	10.7	0.5	0.4	0.2	0.0	0.1	85.4	2.7	11.9	0.091	0.522	18.797090	-99.240881
X. C. Alpuyeca - Jojutla	24.15	1	1	8393	3.9	86.3	2.2	6.5	0.8	0.2	0.1	0.0	0.0	90.2	2.2	7.6	0.081	0.504	18.742943	-99.254098
X. C. Alpuyeca - Jojutla	24.15	1	2	8523	3.6	85.4	2.4	7.4	0.9	0.2	0.1	0.0	0.0	89.0	2.4	8.6	0.088	0.504	18.742954	-99.254117
X. C. Alpuyeca - Jojutla	24.15	3	0	8503	2.7	88.7	0.3	6.1	1.2	0.4	0.4	0.1	0.1	91.4	0.3	8.3	0.080	0.505	18.728940	-99.265204
T. Der. Coatetelco	28.00	3	0	8820	2.9	83.5	3.6	5.2	1.6	2.1	0.7	0.2	0.2	86.4	3.6	10.0	0.074	0.502	18.710251	-99.273756
T. Der. Michapa	44.36	1	0	7461	2.3	85.5	0.9	5.4	0.8	3.8	0.7	0.1	0.5	87.8	0.9	11.3	0.075	0.506	18.612150	-99.356531
T. Izq. Cuernavaca - Iguala (Cuota)	46.93	1	0	7238	2.8	83.3	2.0	4.8	1.0	4.5	1.1	0.1	0.4	86.1	2.0	11.9	0.078	0.515	18.605065	-99.376846
T. Izq. Cuernavaca - Iguala (Cuota)	46.93	3	0	6598	3.4	80.5	3.8	3.8	1.0	3.8	1.3	1.1	1.3	83.9	3.8	12.3	0.055	0.504	18.603212	-99.380027
Huajintla	52.00	3	0	4019	3.0	87.2	3.5	3.7	0.3	1.5	0.6	0.0	0.2	90.2	3.5	6.3	0.092	0.506	18.611896	-99.430511
Lim. Edos. Term. Mor. Ppia. Gro.	57.10																			
T. Der. Ixtapan de La Sal (Axixintla)	63.47	1	0	2526	3.8	86.3	2.0	4.5	0.8	1.9	0.4	0.0	0.3	90.1	2.0	7.9	0.080	0.506	18.611194	-99.506197
Taxco	89.90	3	0	5664	2.8	82.6	1.6	5.8	1.7	2.8	1.0	0.8	0.9	85.4	1.6	13.0	0.082	0.506	18.540471	-99.611728
Iguala	119.63	1	0	6885	3.7	83.5	1.6	4.7	1.0	3.2	0.8	0.7	0.8	87.2	1.6	11.2	0.068	0.505	18.379738	-99.529333
T. Izq. Puente de Ixtla	123.98	3	0	14305	2.5	86.9	0.9	3.9	1.7	1.9	1.2	0.5	0.5	89.4	0.9	9.7	0.089	0.503	18.319420	-99.499358
T. Der. Sabana Grande	144.95	1	0	7898	0.9	79.6	2.2	6.5	3.8	3.9	1.8	0.8	0.5	80.5	2.2	17.3	0.068	0.504	18.170339	-99.552007

GUERRERO

6 CARR: Cuernavaca - Chilpancingo

CLAVE: 00042

RUTA: MEX-095

AÑO: 2013

LUGAR	ESTACION				CLASIFICACION VEHICULAR EN PORCIENTO														COORDENADAS	
	KM	TE	SC	TDPA	M	A	B	C2	C3	T3S2	T3S3	T3S2R4	OTROS	A	B	C	K'	D	LATITUD	LONGITUD
T. Der. Tecuexcontitlán	146.78	1	0	8007	1.1	76.5	2.6	7.5	4.3	3.9	2.1	1.1	0.9	77.6	2.6	19.8	0.065	0.504	18.134690	-99.554810
T. Der. Mezcala	173.14	1	0	6860	1.0	78.3	2.6	6.7	3.9	3.6	1.9	1.1	0.9	79.3	2.6	18.1	0.064	0.511	17.934754	-99.589617
T. Der. Filo de Caballo	189.89	3	0	7556	0.5	77.7	2.4	7.8	4.5	4.0	1.8	1.0	0.3	78.2	2.4	19.4	0.067	0.501	17.796767	-99.564850
Chilpancingo	223.70	1	1	14386	1.7	81.9	2.1	6.8	3.6	2.0	1.2	0.5	0.2	83.6	2.1	14.3	0.081	0.503	17.586340	-99.516430
Chilpancingo	223.70	1	2	14583	1.1	81.2	2.4	7.4	3.9	2.0	1.3	0.5	0.2	82.3	2.4	15.3	0.093	0.503	17.586417	-99.516241

7 CARR: Ent. Alpuyecá - Grutas de Cacahuamilpa

CLAVE: 00421

RUTA: MEX-166

AÑO: 2013

LUGAR	ESTACION				CLASIFICACION VEHICULAR EN PORCIENTO														COORDENADAS	
	KM	TE	SC	TDPA	M	A	B	C2	C3	T3S2	T3S3	T3S2R4	OTROS	A	B	C	K'	D	LATITUD	LONGITUD
T. C. Cuernavaca - Chilpancingo	0.00	3	0	7062	2.7	87.2	1.6	4.0	0.7	2.9	0.3	0.1	0.5	89.9	1.6	8.5	0.073	0.503	18.749491	-99.257215
T. Der. Zona Arq. de Xochicalco	8.40	3	1	3267	2.6	90.8	0.6	4.4	0.6	0.6	0.4	0.0	0.0	93.4	0.6	6.0	0.077	0.500	18.777881	-99.302590
T. Der. Zona Arq. de Xochicalco	8.40	3	2	3268	2.8	90.3	0.6	4.6	0.7	0.5	0.4	0.0	0.1	93.1	0.6	6.3	0.083	0.500	18.777881	-99.302591
Miacatlán	14.95	3	1	5377	2.1	91.3	2.3	3.1	0.3	0.5	0.3	0.0	0.1	93.4	2.3	4.3	0.077	0.502	18.755510	-99.363725
Miacatlán	14.95	3	2	5341	2.1	90.5	2.7	3.5	0.3	0.5	0.3	0.0	0.1	92.6	2.7	4.7	0.074	0.502	18.755509	-99.363726
Mazatepec	18.28	3	0	9757	2.4	85.4	2.5	4.2	0.6	3.7	0.4	0.1	0.7	87.8	2.5	9.7	0.073	0.504	18.722089	-99.367672
Tetecala	25.05	3	0	7204	3.3	87.2	2.7	3.2	0.3	2.4	0.4	0.1	0.4	90.5	2.7	6.8	0.069	0.501	18.728717	-99.406472
Coatlán del Río	29.80	3	0	4294	3.1	90.5	1.3	2.3	0.2	2.0	0.2	0.1	0.3	93.6	1.3	5.1	0.072	0.501	18.748039	-99.443627
Michapa	41.26	1	0	2910	3.3	88.4	1.0	3.0	1.1	1.7	1.4	0.1	0.0	91.7	1.0	7.3	0.069	0.506	18.706168	-99.475768
Lim. Edos. Term. Mor. Ppia. Gro.	42.40																			
T. C. Toluca - Axixintla	48.65																			

8 CARR: Iguala - Cd. Altamirano

CLAVE: 12195

RUTA: MEX-051

AÑO: 2013

LUGAR	ESTACION				CLASIFICACION VEHICULAR EN PORCIENTO														COORDENADAS	
	KM	TE	SC	TDPA	M	A	B	C2	C3	T3S2	T3S3	T3S2R4	OTROS	A	B	C	K'	D	LATITUD	LONGITUD
Iguala	0.00																			
T. Izq. Cocula	9.40	1	0	6426	3.0	86.9	1.6	3.9	0.7	2.2	1.1	0.1	0.5	89.9	1.6	8.5	0.082	0.539	18.327428	-99.596654
T. Izq. Cocula	9.40	3	0	4010	2.2	88.1	1.1	3.5	1.0	2.4	1.1	0.3	0.3	90.3	1.1	8.6	0.087	0.523	18.322247	-99.608236
T. Izq. Teloloapan	63.99	1	0	3952	2.4	87.1	1.1	4.2	1.0	2.5	1.0	0.1	0.6	89.5	1.1	9.4	0.077	0.502	18.354381	-99.847653
T. Izq. Almoleya	116.60	1	0	1271	1.4	83.1	2.1	4.1	2.5	3.9	2.5	0.1	0.3	84.5	2.1	13.4	0.073	0.501	18.375369	-100.172927
T. Izq. Arcelia	131.98	3	0	4181	12.6	76.2	2.1	4.1	1.1	2.6	0.9	0.1	0.3	88.8	2.1	9.1	0.097	0.513	18.321560	-100.298455
Cd. Altamirano	184.55	1	1	8778	8.1	81.0	1.4	4.4	1.1	3.0	0.7	0.1	0.2	89.1	1.4	9.5	0.081	0.508	18.348457	-100.659184
Cd. Altamirano	184.55	1	2	8495	8.0	79.8	1.7	4.9	1.2	3.4	0.7	0.1	0.2	87.8	1.7	10.5	0.081	0.508	18.348457	-100.659184

GUERRERO

9 CARR: La Sabana - Puerto Marqués

CLAVE: 12291

RUTA: MEX-200

AÑO: 2013

LUGAR	ESTACION				CLASIFICACION VEHICULAR EN PORCIENTO										COORDENADAS					
	KM	TE	SC	TDPA	M	A	B	C2	C3	T3S2	T3S3	T3S2R4	OTROS	A	B	C	K'	D	LATITUD	LONGITUD
T. C. Las Cruces - Pinotepa Nacional	0.00	3	1	14131	3.3	85.1	0.8	8.2	0.9	0.5	0.6	0.3	0.3	88.4	0.8	10.8	0.077	0.503	16.855012	-99.811121
T. C. Las Cruces - Pinotepa Nacional	0.00	3	2	13947	3.1	84.1	1.0	9.1	0.9	0.6	0.6	0.3	0.3	87.2	1.0	11.8	0.074	0.503	16.854449	-99.811056
X. C. Acapulco - Aeropuerto Acapulco	7.20	1	1	15706	3.2	85.5	1.8	7.1	0.8	0.5	0.6	0.2	0.3	88.7	1.8	9.5	0.094	0.502	16.817094	-99.814694
X. C. Acapulco - Aeropuerto Acapulco	7.20	1	2	15589	2.6	84.9	1.8	8.1	1.0	0.5	0.6	0.2	0.3	87.5	1.8	10.7	0.085	0.502	16.817045	-99.814542
Puerto Marqués	8.70																			

10 CARR: Las Cruces - Pinotepa Nacional

CLAVE: 00073

RUTA: MEX-200

AÑO: 2013

LUGAR	ESTACION				CLASIFICACION VEHICULAR EN PORCIENTO										COORDENADAS					
	KM	TE	SC	TDPA	M	A	B	C2	C3	T3S2	T3S3	T3S2R4	OTROS	A	B	C	K'	D	LATITUD	LONGITUD
T. C. Chilpancingo - Acapulco	0.00	3	1	16838	2.3	87.2	2.6	5.8	0.6	0.5	0.7	0.2	0.1	89.5	2.6	7.9	0.061	0.510	16.885475	-99.830342
T. C. Chilpancingo - Acapulco	0.00	3	2	17525	2.2	86.7	2.7	6.2	0.6	0.5	0.8	0.2	0.1	88.9	2.7	8.4	0.062	0.510	16.885456	-99.830314
T. Der. Puerto Marqués	4.62	1	1	15111	3.6	82.4	3.0	8.1	1.0	0.8	0.6	0.3	0.2	86.0	3.0	11.0	0.084	0.500	16.867784	-99.811092
T. Der. Puerto Marqués	4.62	1	2	15129	3.5	81.1	3.2	9.0	1.2	0.8	0.7	0.3	0.2	84.6	3.2	12.2	0.075	0.500	16.867609	-99.810917
T. Der. Puerto Marqués	4.62	3	0	11613	2.4	85.3	1.3	5.8	1.7	1.2	1.4	0.5	0.4	87.7	1.3	11.0	0.079	0.505	16.857514	-99.806220
X. C. Puerto Marqués - La Venta (Cuota)	11.70	1	1	3747	3.5	89.6	1.1	2.3	1.3	0.9	0.7	0.4	0.2	93.1	1.1	5.8	0.084	0.501	16.831038	-99.765442
X. C. Puerto Marqués - La Venta (Cuota)	11.70	1	2	3725	3.9	88.6	1.2	2.6	1.4	1.1	0.7	0.3	0.2	92.5	1.2	6.3	0.093	0.501	16.831157	-99.765437
X. C. Puerto Marqués - La Venta (Cuota)	11.70	3	1	4246	3.4	87.1	1.3	4.3	1.5	1.2	0.7	0.3	0.2	90.5	1.3	8.2	0.090	0.504	16.830394	-99.754316
X. C. Puerto Marqués - La Venta (Cuota)	11.70	3	2	4315	3.9	85.8	1.4	4.7	1.6	1.3	0.8	0.3	0.2	89.7	1.4	8.9	0.079	0.504	16.830589	-99.754266
San Marcos	58.90	1	0	6397	2.1	82.3	1.9	5.9	2.0	3.6	1.0	0.7	0.5	84.4	1.9	13.7	0.072	0.500	16.784667	-99.397653
Nexpa	84.96	3	0	4746	2.5	77.0	2.9	6.7	2.5	4.4	1.7	1.2	1.1	79.5	2.9	17.6	0.062	0.501	16.775027	-99.194531
T. Izq. Copala (1º Acceso)	117.50	1	0	5213	1.3	80.5	2.5	6.6	3.1	3.4	1.3	0.7	0.6	81.8	2.5	15.7	0.068	0.507	16.606771	-98.984898
T. Izq. Copala (1º Acceso)	117.50	3	0	5880	2.2	82.5	1.8	5.4	1.8	4.2	1.0	0.5	0.6	84.7	1.8	13.5	0.073	0.500	16.603531	-98.972649
T. Izq. Ometepec	175.88	1	0	4136	2.1	79.9	2.3	7.5	2.4	3.6	0.9	0.8	0.5	82.0	2.3	15.7	0.071	0.502	16.655227	-98.503506
Cuajinicuilapa	200.60	3	0	2631	1.7	80.0	2.8	7.9	2.6	2.8	1.0	0.8	0.4	81.7	2.8	15.5	0.078	0.501	16.463611	-98.397090
Lim. Edos. Term. Gro. Ppia. Oax.	207.80																			
T. Izq. San Pedro Orizaba	215.00	3	0	1922	1.9	80.7	2.7	6.5	3.2	2.8	1.0	0.9	0.3	82.6	2.7	14.7	0.086	0.501	16.442440	-98.341813
T. Izq. Tlaxiaco	245.47	1	0	3205	1.4	84.1	1.7	4.9	2.4	3.1	1.0	0.6	0.8	85.5	1.7	12.8	0.080	0.503	16.379479	-98.094246
T. Izq. Tlaxiaco	245.47	3	0	6124	1.2	85.9	1.3	4.5	1.5	3.4	1.0	0.4	0.8	87.1	1.3	11.6	0.073	0.505	16.375183	-98.092500
Pinotepa Nacional	252.50																			



GUERRERO

11 CARR: Libramiento Norte de Acapulco

CLAVE: 12421

RUTA: MEX-095

AÑO: 2013

LUGAR	ESTACION				CLASIFICACION VEHICULAR EN PORCIENTO														COORDENADAS	
	KM	TE	SC	TDPA	M	A	B	C2	C3	T3S2	T3S3	T3S2R4	OTROS	A	B	C	K'	D	LATITUD	LONGITUD
T. C. Chilpancingo - Acapulco	0.00	3	0	4485	1.3	70.4	1.9	16.2	4.1	3.4	1.5	0.8	0.4	71.7	1.9	26.4	0.078	0.501	16.982200	-99.820401
T. Der. Pelillo	6.40	3	0	2926	2.2	73.1	2.1	11.5	3.0	3.9	2.5	0.9	0.8	75.3	2.1	22.6	0.093	0.514	16.980171	-99.866831
T. C. Acapulco - Zihuatanejo	21.10	1	0	4064	3.0	74.2	2.1	10.8	2.9	4.4	1.7	0.6	0.3	77.2	2.1	20.7	0.074	0.507	16.962952	-99.975621

12 CARR: Milpillan - T. C. (Acapulco - Zihuatanejo)

CLAVE: 12012

RUTA: MEX-196

AÑO: 2013

LUGAR	ESTACION				CLASIFICACION VEHICULAR EN PORCIENTO														COORDENADAS	
	KM	TE	SC	TDPA	M	A	B	C2	C3	T3S2	T3S3	T3S2R4	OTROS	A	B	C	K'	D	LATITUD	LONGITUD
T. C. Cuernavaca - Chilpancingo	0.00	3	0	1077	1.3	85.2	2.1	7.3	2.0	1.2	0.4	0.2	0.3	86.5	2.1	11.4	0.084	0.501	17.798444	-99.564914
Los Morros	45.07	1	0	683	2.2	84.6	3.7	5.6	1.9	1.7	0.3	0.0	0.0	86.8	3.7	9.5	0.079	0.503	17.693888	-99.802777
Atoyac de Álvarez	233.50	1	0	975	11.3	82.7	0.2	3.9	0.8	1.0	0.1	0.0	0.0	94.0	0.2	5.8	0.096	0.502	17.218740	-100.424299
T. C. Acapulco - Zihuatanejo	237.00	1	1	4576	8.0	85.5	0.3	4.8	0.3	0.7	0.4	0.0	0.0	93.5	0.3	6.2	0.079	0.507	17.165003	-100.433584
T. C. Acapulco - Zihuatanejo	237.00	1	2	4701	6.7	86.1	0.3	5.2	0.3	0.9	0.4	0.0	0.1	92.8	0.3	6.9	0.078	0.507	17.165003	-100.433587

13 CARR: Ramal a Aeropuerto Zihuatanejo

CLAVE: 12423

RUTA: MEX-200

AÑO: 2013

LUGAR	ESTACION				CLASIFICACION VEHICULAR EN PORCIENTO														COORDENADAS	
	KM	TE	SC	TDPA	M	A	B	C2	C3	T3S2	T3S3	T3S2R4	OTROS	A	B	C	K'	D	LATITUD	LONGITUD
T. C. Acapulco - Zihuatanejo	0.00	3	0	3497	4.7	84.9	3.2	3.4	0.3	2.9	0.3	0.1	0.2	89.6	3.2	7.2	0.082	0.536	17.622851	-101.459362
Aeropuerto	2.00																			

14 CARR: Ramal a La Unión

CLAVE:

RUTA: MEX-200

AÑO: 2013

LUGAR	ESTACION				CLASIFICACION VEHICULAR EN PORCIENTO														COORDENADAS	
	KM	TE	SC	TDPA	M	A	B	C2	C3	T3S2	T3S3	T3S2R4	OTROS	A	B	C	K'	D	LATITUD	LONGITUD
T. C. Zihuatanejo - La Mira	0.00	3	0	1737	2.1	83.1	6.5	5.7	0.9	1.5	0.2	0.0	0.0	85.2	6.5	8.3	0.104	0.504	17.939150	-101.827290
La Unión	6.10																			

15 CARR: San Juan de Los Llanos - Ometepec

CLAVE: 12011

RUTA: MEX-200

AÑO: 2013

LUGAR	ESTACION				CLASIFICACION VEHICULAR EN PORCIENTO														COORDENADAS	
	KM	TE	SC	TDPA	M	A	B	C2	C3	T3S2	T3S3	T3S2R4	OTROS	A	B	C	K'	D	LATITUD	LONGITUD
T. C. Las Cruces - Pinolepa Nacional	0.00	3	0	4666	1.9	85.6	1.0	6.0	0.8	2.8	0.8	0.3	0.8	87.5	1.0	11.5	0.075	0.502	16.661591	-98.497444
Ometepec	15.94	1	1	3051	3.5	88.9	1.0	4.0	0.8	0.8	0.4	0.3	0.3	92.4	1.0	6.6	0.076	0.500	16.687814	-98.437058
Ometepec	15.94	1	2	3058	3.4	88.0	1.2	4.7	0.8	1.0	0.4	0.2	0.3	91.4	1.2	7.4	0.084	0.500	16.687880	-98.437103

GUERRERO

16 CARR: Tierra Colorada - Cruz Grande

CLAVE: 12420

RUTA: MEX-198

AÑO: 2013

LUGAR	ESTACION				CLASIFICACION VEHICULAR EN PORCIENTO														COORDENADAS	
	KM	TE	SC	TDPA	M	A	B	C2	C3	T3S2	T3S3	T3S2R4	OTROS	A	B	C	K'	D	LATITUD	LONGITUD
Tierra Colorada	0.00	3	0	1849	3.3	81.7	1.7	7.2	3.1	1.6	0.8	0.2	0.4	85.0	1.7	13.3	0.083	0.500	17.151799	-99.530991
Tecoanapa	61.00	1	0	2370	2.8	85.3	1.8	4.3	2.0	2.1	0.7	0.5	0.5	88.1	1.8	10.1	0.086	0.505	16.985607	-99.264698
Ayutla de Los Libres	82.00	1	0	4685	3.3	85.0	1.1	4.9	1.3	3.2	0.6	0.2	0.4	88.3	1.1	10.6	0.082	0.501	16.977267	-99.107369
Ayutla de Los Libres	82.00	3	0	4112	2.5	81.9	1.5	6.9	2.1	2.6	1.1	0.8	0.6	84.4	1.5	14.1	0.089	0.501	16.951076	-99.102872
Cruz Grande	113.80	1	0	2707	3.9	83.4	1.1	5.1	2.0	2.8	0.8	0.4	0.5	87.3	1.1	11.6	0.091	0.503	16.733183	-99.128332
T. C. Las Cruces - Pinotepa Nacional	114.80																			

17 CARR: Toluca - Cd. Altamirano

CLAVE: 00020

RUTA: MEX-134

AÑO: 2013

LUGAR	ESTACION				CLASIFICACION VEHICULAR EN PORCIENTO														COORDENADAS	
	KM	TE	SC	TDPA	M	A	B	C2	C3	T3S2	T3S3	T3S2R4	OTROS	A	B	C	K'	D	LATITUD	LONGITUD
T. C. Toluca - Axixintla	0.00																			
T. Izq. Capultitlán	1.78	3	1	14136	0.7	88.2	0.5	5.5	0.6	1.8	1.9	0.3	0.5	88.9	0.5	10.6	0.094	0.502	19.256768	-99.685592
T. Izq. Capultitlán	1.78	3	2	14084	0.7	87.2	0.5	6.1	0.6	2.0	2.1	0.3	0.5	87.9	0.5	11.6	0.099	0.502	19.256862	-99.685616
T. Der. Zinacatepec	10.21	3	1	10873	0.9	87.0	2.2	5.7	0.9	1.6	1.1	0.1	0.5	87.9	2.2	9.9	0.101	0.503	19.251978	-99.747900
T. Der. Zinacatepec	10.21	3	2	10991	0.5	86.4	2.3	6.4	0.9	1.8	1.2	0.1	0.4	86.9	2.3	10.8	0.096	0.503	19.251979	-99.747900
T. Izq. Sultepec	18.72	3	0	6508	0.4	84.2	1.3	6.9	1.7	3.5	1.3	0.2	0.5	84.6	1.3	14.1	0.088	0.504	19.212217	-99.810788
T. Der. Valle de Bravo	52.00	3	0	5529	0.4	80.9	1.6	8.5	2.2	3.2	1.8	0.4	1.0	81.3	1.6	17.1	0.077	0.522	19.146611	-99.915938
Temascaltepec	68.76	1	0	4433	1.2	78.9	1.8	7.8	2.2	3.8	2.3	0.9	1.1	80.1	1.8	18.1	0.071	0.505	19.048722	-100.048554
Temascaltepec	68.76	3	0	4780	0.8	83.5	1.4	7.2	1.3	3.6	1.3	0.3	0.6	84.3	1.4	14.3	0.078	0.508	19.041538	-100.051492
T. Izq. San Diego Cuentla	84.34	3	0	4975	0.8	87.5	1.5	4.0	1.6	2.3	1.1	0.7	0.5	88.3	1.5	10.2	0.089	0.509	18.970082	-100.073638
Tejupilco de Hidalgo	100.76	1	0	5210	1.2	84.1	1.8	4.8	1.0	4.1	1.7	0.4	0.9	85.3	1.8	12.9	0.083	0.503	18.923311	-100.147314
Tejupilco de Hidalgo	100.76	3	0	4879	2.3	84.0	1.1	5.5	0.9	3.2	1.7	0.4	0.9	86.3	1.1	12.6	0.082	0.506	18.903260	-100.162949
Cuadrilla de López	113.20	3	0	2299	1.2	79.7	2.7	8.0	1.8	3.0	2.3	0.5	0.8	80.9	2.7	16.4	0.097	0.525	18.874529	-100.227861
T. Izq. Bejucos	147.57	1	0	1236	1.0	72.4	4.4	9.5	3.1	5.5	3.0	0.3	0.8	73.4	4.4	22.2	0.104	0.506	18.784806	-100.421220
Lim. Edos. Term. Mex. Ppia. Gro.	148.00																			
Cutzamala	196.00	1	0	2376	5.0	80.6	2.4	5.0	1.2	3.9	1.5	0.2	0.2	85.6	2.4	12.0	0.090	0.503	18.478937	-100.582290
Lim. Edos. Term. Gro. Ppia. Mich.	201.00																			
Lim. Edos. Term. Mich. Ppia. Gro.	210.30																			
Cd. Altamirano	216.00	1	0	3512	5.1	82.6	1.3	5.0	0.9	3.5	1.0	0.2	0.4	87.7	1.3	11.0	0.093	0.501	18.382066	-100.651579

GUERRERO

18 CARR: Zihuatanejo - La Mira

CLAVE: 00121

RUTA: MEX-200

AÑO: 2013

LUGAR	ESTACION				CLASIFICACION VEHICULAR EN PORCIENTO													COORDENADAS		
	KM	TE	SC	TDPA	M	A	B	C2	C3	T3S2	T3S3	T3S2R4	OTROS	A	B	C	K'	D	LATITUD	LONGITUD
Zihuatanejo	0.00	3	1	13049	2.6	81.4	4.6	6.2	2.5	0.8	0.7	0.5	0.7	84.0	4.6	11.4	0.076	0.504	17.659207	-101.560899
Zihuatanejo	0.00	3	2	13257	3.0	79.8	5.0	6.7	2.7	0.8	0.8	0.5	0.7	82.8	5.0	12.2	0.084	0.504	17.659213	-101.560877
T. Izq. Ixtapa Zihuatanejo	8.00	3	0	7143	4.7	77.9	6.1	6.9	1.8	1.0	1.0	0.1	0.5	82.6	6.1	11.3	0.077	0.528	17.678694	-101.602213
T. Der. Cd. Altamirano	16.30	1	0	6680	4.5	76.8	5.8	6.5	1.4	3.5	0.9	0.1	0.5	81.3	5.8	12.9	0.089	0.508	17.726430	-101.602919
T. Der. Cd. Altamirano	16.30	3	0	7214	1.9	76.8	5.8	5.8	3.5	4.1	1.8	0.1	0.2	78.7	5.8	15.5	0.099	0.502	17.730355	-101.609886
T. Der. La Unión	52.00	3	0	4499	0.7	79.9	6.0	3.9	3.6	3.4	1.5	0.5	0.5	80.6	6.0	13.4	0.126	0.503	17.938804	-101.831211
Zacatula	93.50	1	0	3171	2.3	81.9	3.4	3.7	3.6	2.6	1.9	0.1	0.5	84.2	3.4	12.4	0.086	0.521	18.003232	-102.173969
Lim. Edos. Term. Gro. Ppia. Mich.	102.30																			
La Villita	103.80	3	0	1992	6.2	84.0	1.4	4.7	1.5	1.4	0.5	0.0	0.3	90.2	1.4	8.4	0.081	0.503	18.044305	-102.188160
Guacamayas	107.00	1	0	2109	7.6	83.4	1.1	4.7	1.4	1.3	0.4	0.0	0.1	91.0	1.1	7.9	0.094	0.500	18.030227	-102.200123
T. Izq. Lazáro Cárdenas	110.85	1	1	16394	6.2	88.8	0.9	2.8	1.0	0.2	0.1	0.0	0.0	95.0	0.9	4.1	0.065	0.513	17.997820	-102.222587
T. Izq. Lazáro Cárdenas	110.85	1	2	17260	6.5	88.0	1.1	3.1	1.0	0.2	0.1	0.0	0.0	94.5	1.1	4.4	0.065	0.513	17.997820	-102.222586
La Mira	123.60	1	0	11904	2.0	79.2	2.4	4.8	4.1	4.7	1.3	0.5	1.0	81.2	2.4	16.4	0.067	0.528	18.030245	-102.316910

19 CARR: C.D. Puente de Ixtla - Iguala (Cuota)

CLAVE: 00043

RUTA: MEX-091D

AÑO: 2013

LUGAR	ESTACION				CLASIFICACION VEHICULAR EN PORCIENTO													COORDENADAS		
	KM	TE	SC	TDPA	M	A	B	C2	C3	T3S2	T3S3	T3S2R4	OTROS	A	B	C	K'	D	LATITUD	LONGITUD
T. C. Cuernavaca - Acapulco (Cuota)	0.00																			
T. Izq. Puente de Ixtla	2.00	3	0	8038	1.1	79.1	4.3	5.4	2.6	4.8	1.2	0.9	0.6	80.2	4.3	15.5	0.083	0.504	18.628651	-99.327434
T. Der. Amacuzac	9.63	3	0	8340	1.4	77.2	4.1	6.7	2.4	4.9	1.6	1.0	0.7	78.6	4.1	17.3	0.081	0.506	18.597183	-99.376163
Lim. Edos. Term. Mor. Ppia. Gro.	18.20																			
T. Izq. Buenavista	33.58	3	0	5048	0.8	73.5	5.5	7.3	4.0	4.4	2.4	1.7	0.4	74.3	5.5	20.2	0.077	0.514	18.460577	-99.430128
Caseta de Cobro Iguala	59.14	2	0	4435	0.4	70.2	5.8	6.2	7.8	4.1	2.7	2.0	0.8	70.6	5.8	23.6	0.076	0.500	18.336197	-99.508361
T. Der. Iguala	59.50	1	0	4710	0.4	73.5	4.6	7.4	4.8	4.5	2.7	1.6	0.5	73.9	4.6	21.5	0.071	0.516	18.359093	-99.514058
T. C. Cuernavaca - Chilpancingo	62.80																			

20 CARR: Cuernavaca - Acapulco (Cuota)

CLAVE: 00045

RUTA: MEX-095D

AÑO: 2013

LUGAR	ESTACION				CLASIFICACION VEHICULAR EN PORCIENTO													COORDENADAS		
	KM	TE	SC	TDPA	M	A	B	C2	C3	T3S2	T3S3	T3S2R4	OTROS	A	B	C	K'	D	LATITUD	LONGITUD
Cuernavaca	0.00	3	1	42667	2.0	88.6	2.5	3.5	0.8	1.1	0.8	0.5	0.2	90.6	2.5	6.9	0.069	0.530	18.880699	-99.229433
Cuernavaca	0.00	3	2	37902	2.8	86.9	2.7	3.8	1.0	1.2	0.9	0.5	0.2	89.7	2.7	7.6	0.071	0.530	18.880703	-99.229433
T. Izq. Burgos	3.35	1	1	26293	2.0	85.6	1.9	5.6	1.5	1.6	0.8	0.7	0.3	87.6	1.9	10.5	0.069	0.507	18.863009	-99.221149
T. Izq. Burgos	3.35	1	2	27008	2.3	84.1	2.0	6.2	1.6	1.8	0.9	0.8	0.3	86.4	2.0	11.6	0.070	0.507	18.863028	-99.220995

GUERRERO

20 CARR: Cuernavaca - Acapulco (Cuota)

CLAVE: 00045

RUTA: MEX-095D

AÑO: 2013

LUGAR	ESTACION				CLASIFICACION VEHICULAR EN PORCIENTO													COORDENADAS		
	KM	TE	SC	TDPA	M	A	B	C2	C3	T3S2	T3S3	T3S2R4	OTROS	A	B	C	K'	D	LATITUD	LONGITUD
T. Izq. Burgos	3.35	3	1	27152	1.8	85.6	2.5	5.6	1.3	1.4	0.8	0.7	0.3	87.4	2.5	10.1	0.064	0.503	18.857117	-99.220860
T. Izq. Burgos	3.35	3	2	26840	2.1	84.7	2.6	5.8	1.3	1.5	0.9	0.8	0.3	86.8	2.6	10.6	0.073	0.503	18.856437	-99.220657
T. Der. Acatlipa	4.70	1	1	27943	1.8	85.9	2.3	5.4	1.4	1.5	0.8	0.7	0.2	87.7	2.3	10.0	0.075	0.502	18.850058	-99.220017
T. Der. Acatlipa	4.70	1	2	27773	2.3	84.4	2.5	5.8	1.6	1.7	0.8	0.7	0.2	86.7	2.5	10.8	0.077	0.502	18.850050	-99.219856
T. Der. Acatlipa	4.70	3	1	25285	1.3	88.6	2.3	4.2	1.2	1.1	0.5	0.6	0.2	89.9	2.3	7.8	0.097	0.507	18.844553	-99.218348
T. Der. Acatlipa	4.70	3	2	24634	1.5	87.5	2.6	4.7	1.2	1.2	0.5	0.6	0.2	89.0	2.6	8.4	0.089	0.507	18.844788	-99.218274
T. Izq. Miguel Hidalgo	5.85	3	1	23796	1.5	79.6	2.4	12.5	1.0	1.3	0.8	0.7	0.2	81.1	2.4	16.5	0.085	0.507	18.833599	-99.217641
T. Izq. Miguel Hidalgo	5.85	3	2	23128	1.5	78.7	2.7	12.5	1.2	1.5	0.9	0.8	0.2	80.2	2.7	17.1	0.077	0.507	18.833610	-99.217640
T. Der. Aeropuerto Cuernavaca	9.83	1	1	21205	1.7	83.1	2.6	6.0	2.0	2.0	1.1	0.9	0.6	84.8	2.6	12.6	0.070	0.503	18.805084	-99.220057
T. Der. Aeropuerto Cuernavaca	9.83	1	2	20916	1.8	81.6	2.6	6.7	2.2	2.3	1.2	1.0	0.6	83.4	2.6	14.0	0.074	0.503	18.805083	-99.220057
T. Der. Aeropuerto Cuernavaca	9.83	3	1	14901	1.7	81.8	3.7	7.3	1.7	2.0	0.7	0.9	0.2	83.5	3.7	12.8	0.076	0.505	18.798918	-99.220641
T. Der. Aeropuerto Cuernavaca	9.83	3	2	14595	1.4	81.3	3.9	7.6	1.9	2.0	0.7	1.0	0.2	82.7	3.9	13.4	0.099	0.505	18.798920	-99.220642
T. Izq. Club de Golf Santa Fe	17.48	1	1	10900	1.4	78.3	4.4	7.8	2.7	2.8	1.0	1.3	0.3	79.7	4.4	15.9	0.080	0.501	18.744722	-99.247118
T. Izq. Club de Golf Santa Fe	17.48	1	2	10964	1.1	76.3	4.8	9.2	2.8	3.1	1.1	1.3	0.3	77.4	4.8	17.8	0.101	0.501	18.744724	-99.247118
Caseta de Cobro Alpuyeca	19.80	1	1	10356	0.6	78.0	5.7	8.5	1.8	2.7	1.1	1.0	0.6	78.6	5.7	15.7	0.094	0.510	18.724632	-99.258027
Caseta de Cobro Alpuyeca	19.80	1	2	9944	0.7	75.8	5.8	9.7	1.9	3.3	1.1	1.0	0.7	76.5	5.8	17.7	0.120	0.510	18.724632	-99.258028
Caseta de Cobro Alpuyeca	19.80	3	1	7595	0.5	79.9	4.9	7.1	2.3	2.9	1.0	1.0	0.4	80.4	4.9	14.7	0.100	0.524	18.692256	-99.281927
Caseta de Cobro Alpuyeca	19.80	3	2	6900	0.6	77.5	5.8	7.6	2.6	3.2	1.1	1.2	0.4	78.1	5.8	16.1	0.101	0.524	18.692256	-99.281926
Caseta de Cobro Ing. Francisco Velasco Durán	23.10	2	1	6468	0.6	80.3	7.2	3.2	3.0	2.9	0.9	1.3	0.6	80.9	7.2	11.9	0.111	0.500	18.698554	-99.278044
Caseta de Cobro Ing. Francisco Velasco Durán	23.10	2	2	6468	0.6	80.3	7.2	3.2	3.0	2.9	0.9	1.3	0.6	80.9	7.2	11.9	0.111	0.500	18.698554	-99.278044
Lim. Edos. Term. Mor. Ppia. Gro.	53.30																			
Caseta de Cobro Paso Morelos	82.94	1	1	3514	0.5	83.1	4.9	4.7	1.6	2.5	1.0	1.2	0.5	83.6	4.9	11.5	0.110	0.509	18.238238	-99.213926
Caseta de Cobro Paso Morelos	82.94	1	2	3384	0.5	80.6	5.6	5.7	1.7	2.9	1.1	1.4	0.5	81.1	5.6	13.3	0.124	0.509	18.238203	-99.213778
Caseta de Cobro Paso Morelos	82.94	2	1	3542	0.5	83.6	8.8	1.4	0.7	2.7	0.5	1.2	0.6	84.1	8.8	7.1	0.111	0.500	18.231549	-99.215620
Caseta de Cobro Paso Morelos	82.94	2	2	3542	0.5	83.6	8.8	1.4	0.7	2.7	0.5	1.2	0.6	84.1	8.8	7.1	0.111	0.500	18.231549	-99.215620
Caseta de Cobro Palo Blanco	193.90	1	1	4816	0.5	82.8	4.8	5.4	1.2	2.6	1.0	1.1	0.6	83.3	4.8	11.9	0.096	0.502	17.426523	-99.470280
Caseta de Cobro Palo Blanco	193.90	1	2	4771	0.4	80.9	5.3	6.1	1.4	3.0	1.1	1.2	0.6	81.3	5.3	13.4	0.105	0.502	17.426675	-99.470261
Caseta de Cobro Palo Blanco	193.90	2	1	4387	0.4	82.2	9.4	1.8	1.1	2.7	0.7	1.2	0.5	82.6	9.4	8.0	0.097	0.500	17.423984	-99.466839
Caseta de Cobro Palo Blanco	193.90	2	2	4387	0.4	82.2	9.4	1.8	1.1	2.7	0.7	1.2	0.5	82.6	9.4	8.0	0.097	0.500	17.423984	-99.466839
X. C. Chilpancingo - Acapulco (Tierra Colorada)	226.20	1	1	4164	0.5	81.2	5.8	5.1	1.4	3.2	0.9	1.2	0.7	81.7	5.8	12.5	0.101	0.500	17.180863	-99.552111
X. C. Chilpancingo - Acapulco (Tierra Colorada)	226.20	1	2	4156	0.4	79.7	5.9	5.6	1.7	3.6	1.1	1.3	0.7	80.1	5.9	14.0	0.086	0.500	17.180865	-99.551946
Caseta de Cobro La Venta	269.95	1	1	3752	1.3	80.3	5.7	5.1	1.4	2.4	1.3	1.7	0.8	81.6	5.7	12.7	0.094	0.500	16.929441	-99.796672
Caseta de Cobro La Venta	269.95	1	2	3749	2.3	77.4	6.6	5.5	1.5	2.6	1.4	1.8	0.9	79.7	6.6	13.7	0.083	0.500	16.929435	-99.796678
Caseta de Cobro La Venta	269.95	2	1	4186	0.5	80.8	10.0	1.8	1.3	3.0	0.9	1.3	0.4	81.3	10.0	8.7	0.097	0.500	16.928319	-99.802030
Caseta de Cobro La Venta	269.95	2	2	4186	0.5	80.8	10.0	1.8	1.3	3.0	0.9	1.3	0.4	81.3	10.0	8.7	0.097	0.500	16.928319	-99.802030

GUERRERO

20 CARR: Cuernavaca - Acapulco (Cuota)

CLAVE: 00045

RUTA: MEX-095D

AÑO: 2013

LUGAR	ESTACION				CLASIFICACION VEHICULAR EN PORCIENTO										COORDENADAS					
	KM	TE	SC	TDPA	M	A	B	C2	C3	T3S2	T3S3	T3S2R4	OTROS	A	B	C	K'	D	LATITUD	LONGITUD
T. C. Chilpancingo - Acapulco (Ent. La Venta)	271.50	1	1	4458	1.0	79.8	4.7	7.0	1.5	3.2	1.1	1.1	0.6	80.8	4.7	14.5	0.079	0.505	16.923503	-99.810683
T. C. Chilpancingo - Acapulco (Ent. La Venta)	271.50	1	2	4376	1.2	77.1	5.5	7.9	1.7	3.6	1.2	1.2	0.6	78.3	5.5	16.2	0.094	0.505	16.923503	-99.810683

21 CARR: Libramiento de Técpan (Cuota)

CLAVE: 00073

RUTA: MEX-200D

AÑO: 2013

LUGAR	ESTACION				CLASIFICACION VEHICULAR EN PORCIENTO										COORDENADAS					
	KM	TE	SC	TDPA	M	A	B	C2	C3	T3S2	T3S3	T3S2R4	OTROS	A	B	C	K'	D	LATITUD	LONGITUD
T. C. Acapulco - Zihuatanejo (Oriente)	0.00	3	0	1308	0.8	77.3	3.5	8.2	2.7	4.1	2.0	1.2	0.2	78.1	3.5	18.4	0.093	0.513	17.196505	-100.624719
Caseta de Cobro Técpan	2.60	2	0	1271	0.6	79.8	3.3	4.2	5.9	3.3	1.6	0.9	0.4	80.4	3.3	16.3	0.102	0.500	17.197023	-100.626735
T. C. Acapulco - Zihuatanejo (Poniente)	4.40																			

22 CARR: Nueva Italia - Lázaro Cárdenas (Cuota)

CLAVE: 00032

RUTA: MEX-014D

AÑO: 2013

LUGAR	ESTACION				CLASIFICACION VEHICULAR EN PORCIENTO										COORDENADAS					
	KM	TE	SC	TDPA	M	A	B	C2	C3	T3S2	T3S3	T3S2R4	OTROS	A	B	C	K'	D	LATITUD	LONGITUD
T. Der. Apatzingán	59.40	3	0	4249	0.9	68.3	4.5	6.3	2.2	5.9	3.6	6.9	1.4	69.2	4.5	26.3	0.086	0.509	18.984769	-102.088710
Caseta de Cobro Las Cañas	100.00	2	0	3985	0.1	77.3	4.1	2.9	2.5	3.4	2.2	7.3	0.2	77.4	4.1	18.5	0.078	0.500	18.554190	-101.970337
Lim. Edos. Term. Mich. Ppia. Gro.	159.20																			
Lim. Edos. Term. Gro. Ppia. Mich.	182.00																			
X. C. Lázaro Cárdenas - Zihuatanejo	187.00	1	0	3963	1.7	65.3	5.4	7.5	8.0	5.5	3.6	2.4	0.6	67.0	5.4	27.6	0.063	0.510	18.009481	-101.960318
Caseta de Cobro Feliciano	187.00	2	0	1201	0.2	72.1	5.2	3.4	1.2	3.4	2.5	11.7	0.3	72.3	5.2	22.5	0.078	0.500	18.006510	-101.961761
X. C. Lázaro Cárdenas - Zihuatanejo	187.00	3	0	3918	0.4	64.7	4.4	7.0	8.0	6.5	5.3	2.4	1.3	65.1	4.4	30.5	0.086	0.506	18.000769	-101.964790
T. C. La Orilla - Las Truchas	212.00																			

23 CARR: Rancho Viejo - Taxco (Cuota)

CLAVE: 12010

RUTA: MEX-092D

AÑO: 2013

LUGAR	ESTACION				CLASIFICACION VEHICULAR EN PORCIENTO										COORDENADAS					
	KM	TE	SC	TDPA	M	A	B	C2	C3	T3S2	T3S3	T3S2R4	OTROS	A	B	C	K'	D	LATITUD	LONGITUD
X. C. Cuernavaca - Chilpancingo	0.00																			
Caseta de Cobro Taxco	0.62	2	0	2491	1.2	89.8	5.8	2.2	0.5	0.2	0.2	0.0	0.1	91.0	5.8	3.2	0.111	0.500	18.588647	-99.560007
T. C. Cuernavaca - Chilpancingo	8.10	1	0	2580	1.1	87.0	4.3	4.3	0.6	1.9	0.5	0.1	0.2	88.1	4.3	7.6	0.083	0.500	18.565285	-99.596595

GUERRERO

24 CARR: Zacapalco - Rancho Viejo (Cuota)

CLAVE: 12010

RUTA: MEX-092D

AÑO: 2013

LUGAR	ESTACION				CLASIFICACION VEHICULAR EN PORCIENTO													COORDENADAS		
	KM	TE	SC	TDPA	M	A	B	C2	C3	T3S2	T3S3	T3S2R4	OTROS	A	B	C	K'	D	LATITUD	LONGITUD
T. C. Puente de Ixtla - Iguala (Cuota)	0.00																			
Caseta de Cobro Zacapalco	0.50	2	0	1532	1.1	87.8	6.0	3.1	1.2	0.4	0.1	0.0	0.3	88.9	6.0	5.1	0.131	0.500	18.537920	-99.447568
X. C. Cuernavaca - Chilpancingo	17.20	1	0	1518	1.1	85.2	4.8	5.2	1.7	1.0	0.7	0.1	0.2	86.3	4.8	8.9	0.090	0.503	18.587267	-99.549156

25 CARR: Acapulco - Aeropuerto Acapulco

CLAVE: 12292

RUTA: GRO

AÑO: 2013

LUGAR	ESTACION				CLASIFICACION VEHICULAR EN PORCIENTO													COORDENADAS		
	KM	TE	SC	TDPA	M	A	B	C2	C3	T3S2	T3S3	T3S2R4	OTROS	A	B	C	K'	D	LATITUD	LONGITUD
Acapulco	0.00																			
Puerto Marqués	8.70	1	1	25438	2.5	91.0	1.4	4.0	0.3	0.2	0.4	0.1	0.1	93.5	1.4	5.1	0.062	0.506	16.806414	-99.826649
Puerto Marqués	8.70	1	2	24829	2.7	90.4	1.5	4.3	0.3	0.2	0.4	0.1	0.1	93.1	1.5	5.4	0.061	0.506	16.806644	-99.826529
Puerto Marqués	8.70	3	1	21307	1.4	87.3	1.7	8.0	0.6	0.3	0.5	0.1	0.1	88.7	1.7	9.6	0.077	0.509	16.800297	-99.819306
Puerto Marqués	8.70	3	2	20517	1.4	86.4	2.0	8.6	0.6	0.3	0.5	0.1	0.1	87.8	2.0	10.2	0.074	0.509	16.800751	-99.819367
T. Der. Los Amates	14.90	3	1	3968	2.2	81.9	2.9	9.4	0.9	0.9	1.2	0.2	0.4	84.1	2.9	13.0	0.095	0.500	16.767317	-99.766693
T. Der. Los Amates	14.90	3	2	3967	2.6	80.4	3.1	9.9	1.0	1.0	1.3	0.3	0.4	83.0	3.1	13.9	0.078	0.500	16.767482	-99.766581
Aeropuerto	16.20																			

26 CARR: Ent. Potrero - Lomas de Chapultepec

CLAVE: 12293

RUTA: GRO

AÑO: 2013

LUGAR	ESTACION				CLASIFICACION VEHICULAR EN PORCIENTO													COORDENADAS		
	KM	TE	SC	TDPA	M	A	B	C2	C3	T3S2	T3S3	T3S2R4	OTROS	A	B	C	K'	D	LATITUD	LONGITUD
T. C. Acapulco - Aeropuerto Acapulco	0.00	3	1	5912	2.7	90.8	0.8	3.3	0.8	0.8	0.5	0.1	0.2	93.5	0.8	5.7	0.091	0.502	16.769945	-99.774129
T. C. Acapulco - Aeropuerto Acapulco	0.00	3	2	5868	2.5	90.2	0.9	3.6	0.9	0.9	0.6	0.2	0.2	92.7	0.9	6.4	0.101	0.502	16.769842	-99.773964
T. C. Las Cruces - Pinotepa Nacional	29.00																			

27 CARR: Las Petaquillas - Quechultenango

CLAVE:

RUTA: GRO

AÑO: 2013

LUGAR	ESTACION				CLASIFICACION VEHICULAR EN PORCIENTO													COORDENADAS		
	KM	TE	SC	TDPA	M	A	B	C2	C3	T3S2	T3S3	T3S2R4	OTROS	A	B	C	K'	D	LATITUD	LONGITUD
Las Petaquillas	0.00	3	0	2930	2.4	85.3	0.8	8.3	0.5	1.4	0.7	0.2	0.4	87.7	0.8	11.5	0.090	0.510	17.483390	-99.444756
Quechultenango	26.60																			

GUERRERO

28 CARR: Pie de La Cuesta - Barra de Coyuca

CLAVE: 12427

RUTA: GRO

AÑO: 2013

LUGAR	ESTACION				CLASIFICACION VEHICULAR EN PORCIENTO										COORDENADAS					
	KM	TE	SC	TDPA	M	A	B	C2	C3	T3S2	T3S3	T3S2R4	OTROS	A	B	C	K'	D	LATITUD	LONGITUD
T. C. Acapulco - Zihuatanejo	0.00	3	0	7263	8.1	78.9	2.1	4.0	0.1	4.5	1.1	0.4	0.8	87.0	2.1	10.9	0.087	0.504	16.900170	-99.968282
Barra de Coyuca	16.50	1	0	1199	11.4	80.4	3.0	3.9	0.2	1.0	0.1	0.0	0.0	91.8	3.0	5.2	0.083	0.500	16.945610	-100.091138

29 CARR: Ramal a Cocula

CLAVE: 12082

RUTA: GRO

AÑO: 2013

LUGAR	ESTACION				CLASIFICACION VEHICULAR EN PORCIENTO										COORDENADAS					
	KM	TE	SC	TDPA	M	A	B	C2	C3	T3S2	T3S3	T3S2R4	OTROS	A	B	C	K'	D	LATITUD	LONGITUD
T. C. Iguala - Ciudad Altamirano	0.00	3	0	3143	5.0	85.0	1.0	5.7	0.5	2.1	0.3	0.0	0.4	90.0	1.0	9.0	0.073	0.506	18.316631	-99.606221
Cocula	13.00																			

30 CARR: T. C. (Iguala - Chilpancingo) - Atenango del Río

CLAVE: 12001

RUTA: GRO-001

AÑO: 2013

LUGAR	ESTACION				CLASIFICACION VEHICULAR EN PORCIENTO										COORDENADAS					
	KM	TE	SC	TDPA	M	A	B	C2	C3	T3S2	T3S3	T3S2R4	OTROS	A	B	C	K'	D	LATITUD	LONGITUD
T. C. Cuernavaca - Chilpancingo	0.00	3	0	4650	3.5	87.9	0.3	4.0	0.5	2.5	0.7	0.1	0.5	91.4	0.3	8.3	0.088	0.501	18.292221	-99.507579
T. Der. Pololcingo	11.20	1	0	3878	3.2	85.8	0.6	7.0	0.5	2.0	0.5	0.1	0.3	89.0	0.6	10.4	0.083	0.500	18.304248	-99.425241
T. Der. Pololcingo	11.20	3	0	3460	3.0	86.4	0.3	7.0	0.8	1.7	0.3	0.2	0.3	89.4	0.3	10.3	0.084	0.504	18.306644	-99.420566
Huitzucu	22.00	3	0	3892	3.6	86.4	0.3	6.6	0.6	1.9	0.5	0.0	0.1	90.0	0.3	9.7	0.073	0.507	18.299161	-99.319825
Atenango del Río	62.00	1	0	908	3.3	82.1	0.6	11.7	0.8	0.9	0.3	0.3	0.0	85.4	0.6	14.0	0.099	0.504	18.121682	-99.119705

31 CARR: Taxco - Ixcateopan

CLAVE: 12083

RUTA: GRO

AÑO: 2013

LUGAR	ESTACION				CLASIFICACION VEHICULAR EN PORCIENTO										COORDENADAS					
	KM	TE	SC	TDPA	M	A	B	C2	C3	T3S2	T3S3	T3S2R4	OTROS	A	B	C	K'	D	LATITUD	LONGITUD
Taxco	0.00	3	0	4104	6.2	88.4	0.1	2.0	0.3	1.9	0.6	0.1	0.4	94.6	0.1	5.3	0.059	0.501	18.553512	-99.619191
Ixcateopan	36.00	1	0	2953	4.9	82.3	1.7	2.5	1.1	3.5	1.9	1.4	0.7	87.2	1.7	11.1	0.055	0.502	18.504496	-99.784919

32 CARR: Teloloapan - Apaxtla de Castrejón

CLAVE: 12081

RUTA: GRO

AÑO: 2013

LUGAR	ESTACION				CLASIFICACION VEHICULAR EN PORCIENTO										COORDENADAS					
	KM	TE	SC	TDPA	M	A	B	C2	C3	T3S2	T3S3	T3S2R4	OTROS	A	B	C	K'	D	LATITUD	LONGITUD
T. C. Iguala - Ciudad Altamirano	0.00	3	0	4131	8.2	82.1	0.2	6.3	0.3	2.4	0.3	0.0	0.2	90.3	0.2	9.5	0.076	0.505	18.353469	-99.857332
Apaxtla de Castrejón	34.00																			

GUERRERO

33 CARR: Tlapa de Comonfort - Marquelia

CLAVE:

RUTA: GRO

AÑO: 2013

LUGAR	ESTACION				CLASIFICACION VEHICULAR EN PORCIENTO													COORDENADAS		
	KM	TE	SC	TDPA	M	A	B	C2	C3	T3S2	T3S3	T3S2R4	OTROS	A	B	C	K'	D	LATITUD	LONGITUD
Tlapa de Comonfort	0.00	3	0	2103	1.7	88.0	0.2	6.8	0.4	1.8	0.4	0.2	0.5	89.7	0.2	10.1	0.081	0.500	17.533069	-98.601520
Marquelia	163.00	1	0	2484	7.3	84.5	1.3	2.6	1.0	2.2	0.4	0.3	0.4	91.8	1.3	6.9	0.080	0.504	16.589075	-98.817098

34 CARR: Puerto Marqués - La Venta (Cuota)

CLAVE: 00043

RUTA: GRO-D

AÑO: 2013

LUGAR	ESTACION				CLASIFICACION VEHICULAR EN PORCIENTO													COORDENADAS		
	KM	TE	SC	TDPA	M	A	B	C2	C3	T3S2	T3S3	T3S2R4	OTROS	A	B	C	K'	D	LATITUD	LONGITUD
Puerto Marqués	0.00																			
X. C. Las Cruces - Pinotepa Nacional	6.33	1	1	1314	1.3	84.5	2.1	7.7	1.6	1.1	0.7	0.6	0.4	85.8	2.1	12.1	0.099	0.502	16.825362	-99.761813
X. C. Las Cruces - Pinotepa Nacional	6.33	1	2	1324	1.3	82.9	2.4	8.9	1.7	1.4	0.6	0.5	0.3	84.2	2.4	13.4	0.086	0.502	16.826029	-99.761636
X. C. Las Cruces - Pinotepa Nacional	6.33	3	1	2209	1.1	85.2	1.6	6.6	1.4	1.9	0.6	0.9	0.7	86.3	1.6	12.1	0.074	0.502	16.832760	-99.758883
X. C. Las Cruces - Pinotepa Nacional	6.33	3	2	2230	0.8	84.2	1.8	7.3	1.5	2.2	0.6	1.0	0.6	85.0	1.8	13.2	0.088	0.502	16.833132	-99.759207
La Venta	20.80																			

35 CARR: Toluca - Axixintla

CLAVE: 00122

RUTA: EM-MEX-055

AÑO: 2013

LUGAR	ESTACION				CLASIFICACION VEHICULAR EN PORCIENTO													COORDENADAS		
	KM	TE	SC	TDPA	M	A	B	C2	C3	T3S2	T3S3	T3S2R4	OTROS	A	B	C	K'	D	LATITUD	LONGITUD
Toluca	0.00																			
T. Izq. Metepec	4.74	1	1	38257	1.1	84.3	1.8	6.9	1.0	1.7	1.7	0.7	0.8	85.4	1.8	12.8	0.077	0.501	19.243642	-99.603133
T. Izq. Metepec	4.74	1	2	38140	0.9	82.9	2.0	7.5	1.1	1.9	2.0	0.7	1.0	83.8	2.0	14.2	0.085	0.501	19.243642	-99.603134
Mexicalcingo	8.80	1	1	34660	0.9	84.8	1.9	6.7	1.1	1.9	1.5	0.5	0.7	85.7	1.9	12.4	0.076	0.513	19.223050	-99.593461
Mexicalcingo	8.80	1	2	36455	0.4	83.7	2.2	7.5	1.2	1.9	1.7	0.5	0.9	84.1	2.2	13.7	0.089	0.513	19.223061	-99.593440
Mexicalcingo	8.80	3	1	27973	1.3	87.6	0.5	4.4	1.2	1.8	2.0	0.5	0.7	88.9	0.5	10.6	0.079	0.504	19.200256	-99.585014
Mexicalcingo	8.80	3	2	28412	0.6	87.4	0.5	5.0	1.3	1.9	2.0	0.5	0.8	88.0	0.5	11.5	0.097	0.504	19.200248	-99.585014
T. Der. Calimaya	12.70	3	1	22181	0.7	86.5	2.0	6.2	1.4	1.4	1.0	0.3	0.5	87.2	2.0	10.8	0.086	0.500	19.180891	-99.577500
T. Der. Calimaya	12.70	3	2	22145	0.9	84.9	2.3	7.0	1.6	1.5	1.0	0.3	0.5	85.8	2.3	11.9	0.092	0.500	19.180889	-99.577499
Tenancingo	44.80	3	0	11241	1.2	83.2	0.8	4.9	0.2	6.6	1.2	0.5	1.4	84.4	0.8	14.8	0.078	0.503	18.965382	-99.602042
T. Izq. Villa Guerrero	56.84	3	0	7782	1.5	86.8	0.5	6.4	0.4	2.2	0.8	0.4	1.0	88.3	0.5	11.2	0.073	0.521	18.965069	-99.644618
Ixtapan de La Sal	80.00	1	1	3471	1.6	87.3	2.0	7.3	0.5	0.5	0.6	0.1	0.1	88.9	2.0	9.1	0.171	0.501	18.851850	-99.675070
Ixtapan de La Sal	80.00	1	2	3485	2.3	85.7	2.3	7.8	0.5	0.6	0.6	0.1	0.1	88.0	2.3	9.7	0.185	0.501	18.851858	-99.675043
Ixtapan de La Sal	80.00	3	1	8257	1.9	84.4	1.7	7.8	0.6	1.6	1.0	0.3	0.7	86.3	1.7	12.0	0.085	0.503	18.830423	-99.668038
Ixtapan de La Sal	80.00	3	2	8368	1.7	83.1	2.0	8.6	0.6	1.8	1.2	0.3	0.7	84.8	2.0	13.2	0.089	0.503	18.830423	-99.668038
Tonatico	86.20	3	0	4009	0.9	85.4	1.4	6.9	0.9	2.5	0.7	0.4	0.9	86.3	1.4	12.3	0.084	0.507	18.801151	-99.658548
Lim. Edos. Term. Mex. Ppia. Gro.	98.50																			



GUERRERO

35 CARR: Toluca - Axixintla

CLAVE: 00122

RUTA: EM-MEX-055

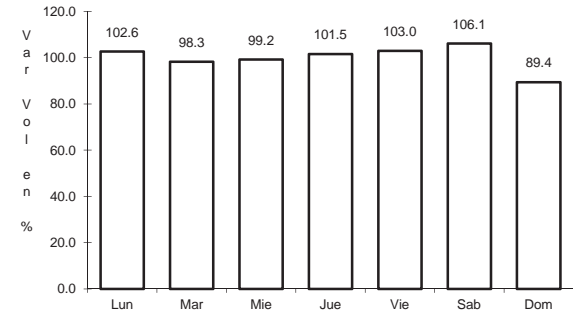
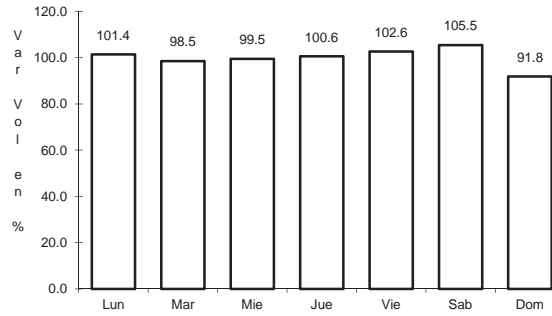
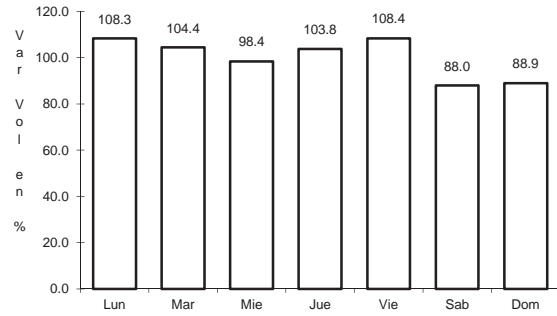
AÑO: 2013

L U G A R	E S T A C I O N				C L A S I F I C A C I O N V E H I C U L A R E N P O R C I E N T O													C O O R D E N A D A S		
	KM	TE	SC	TDPA	M	A	B	C2	C3	T3S2	T3S3	T3S2R4	OTROS	A	B	C	K'	D	LATITUD	LONGITUD
Cacahuamilpa	120.30	1	0	1934	1.3	83.0	2.9	8.3	1.8	1.6	0.9	0.0	0.2	84.3	2.9	12.8	0.094	0.513	18.684996	-99.515770
T. C. Cuernavaca - Chilpancingo	125.30	1	0	1244	2.0	85.2	1.6	6.9	0.8	2.2	1.1	0.0	0.3	87.2	1.6	11.3	0.078	0.504	18.621393	-99.508242

1 CARR: Acapulco - Zihuatanejo

CLAVE: 12072

RUTA: MEX-200



Km: 10.37      Tipo: 1      Sent: 0

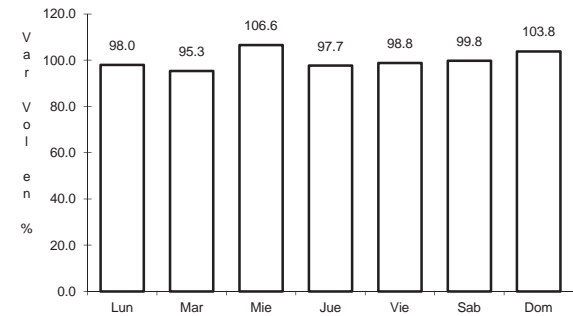
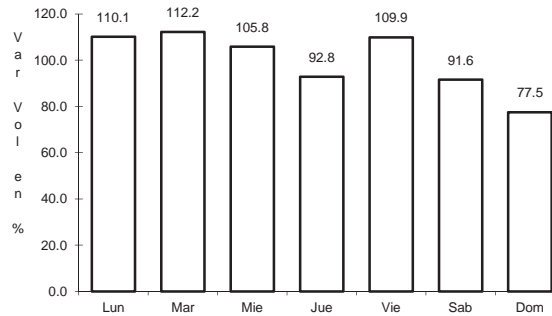
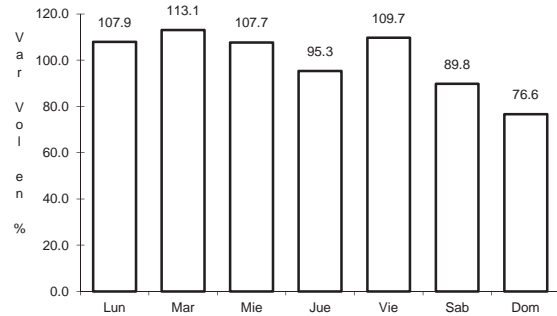
Km: 242.90      Tipo: 1      Sent: 1

Km: 242.90      Tipo: 1      Sent: 2

2 CARR: Cd. Altamirano - T. C. (Zihuatanejo - La Mira)

CLAVE: 12422

RUTA: MEX-134



Km: 0.00      Tipo: 3      Sent: 1

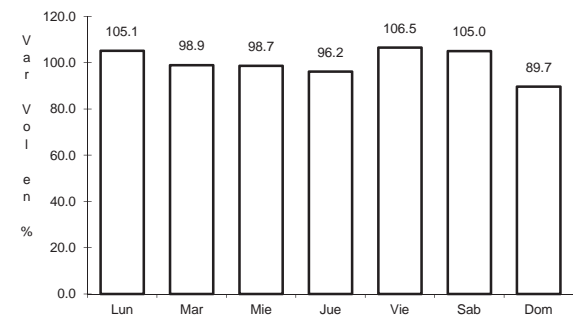
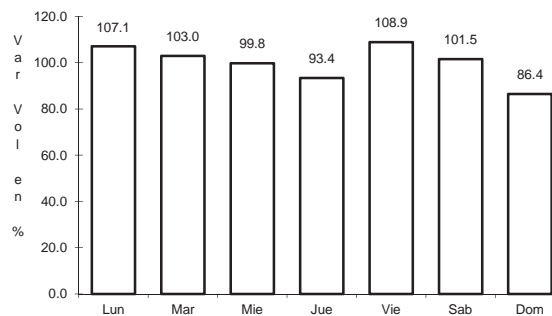
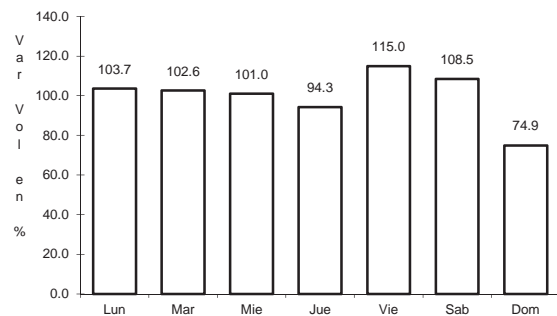
Km: 0.00      Tipo: 3      Sent: 2

Km: 185.30      Tipo: 1      Sent: 0

3 CARR: Chilpancingo - Acapulco

CLAVE: 12045

RUTA: MEX-095



Km: 4.20      Tipo: 1      Sent: 1

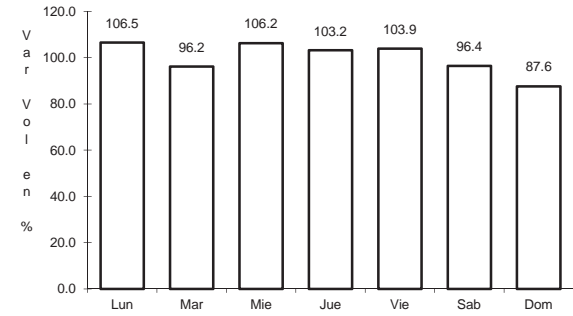
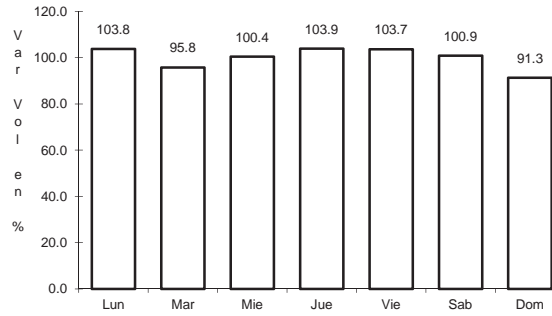
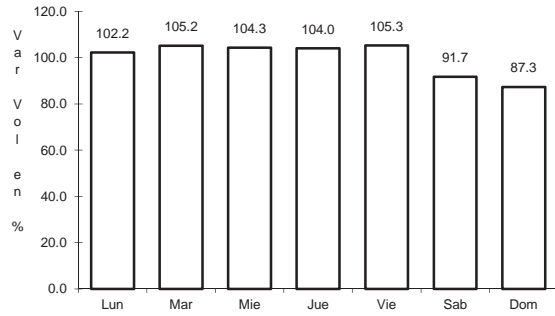
Km: 4.20      Tipo: 1      Sent: 2

Km: 112.80      Tipo: 3      Sent: 0

4 CARR: Chilpancingo - Chichihualco

CLAVE: 12426

RUTA: MEX-095



Km: 0.00      Tipo: 3      Sent: 0

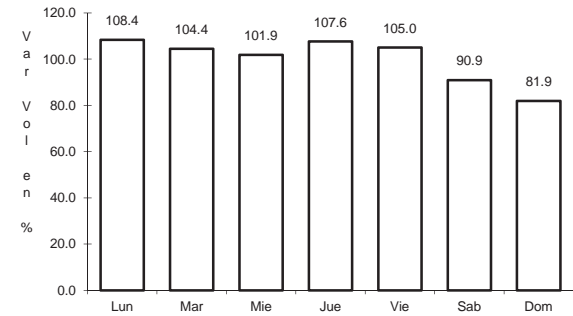
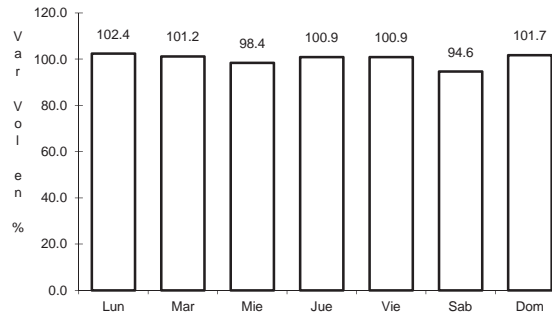
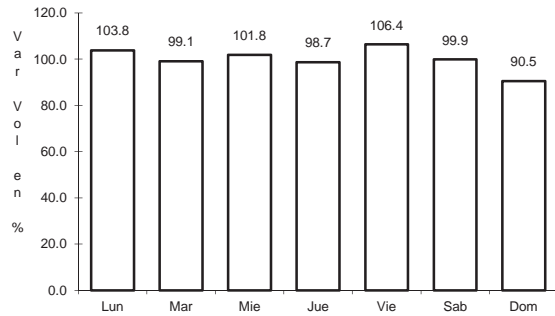
Km: 15.10      Tipo: 1      Sent: 0

Km: 26.30      Tipo: 1      Sent: 0

5 CARR: Chilpancingo - Jilotepec

CLAVE: 12002

RUTA: MEX-093



Km: 0.00      Tipo: 3      Sent: 0

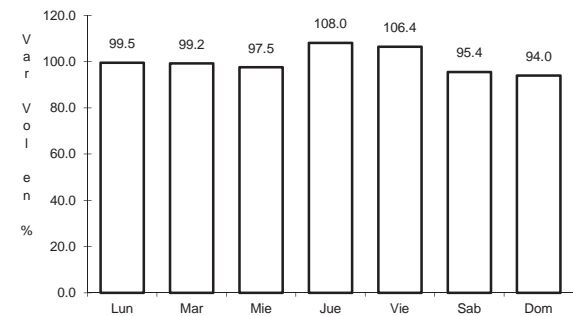
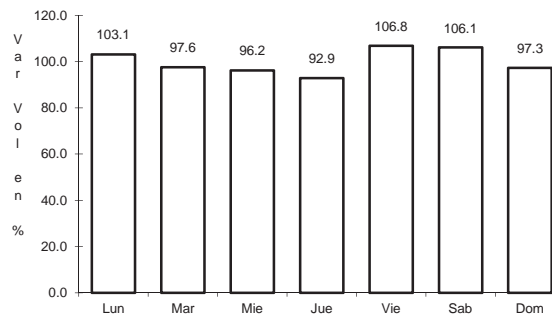
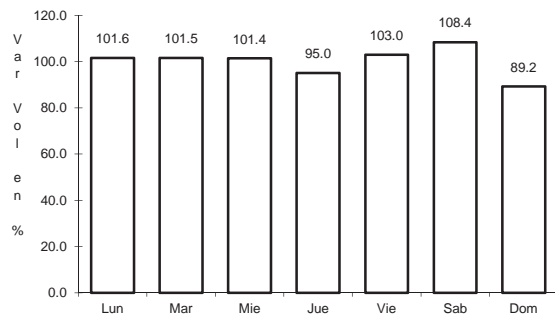
Km: 53.62      Tipo: 3      Sent: 0

Km: 235.00      Tipo: 1      Sent: 0

6 CARR: Cuernavaca - Chilpancingo

CLAVE: 00042

RUTA: MEX-095



Km: 9.80      Tipo: 1      Sent: 1

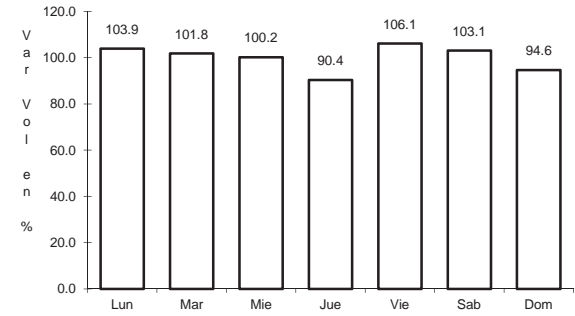
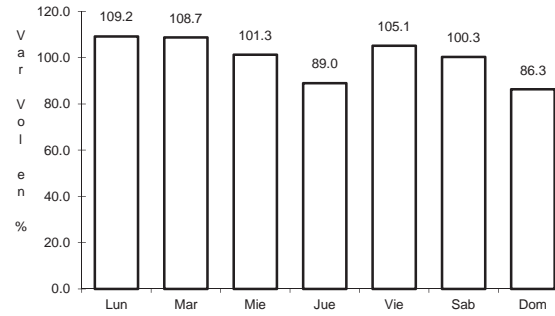
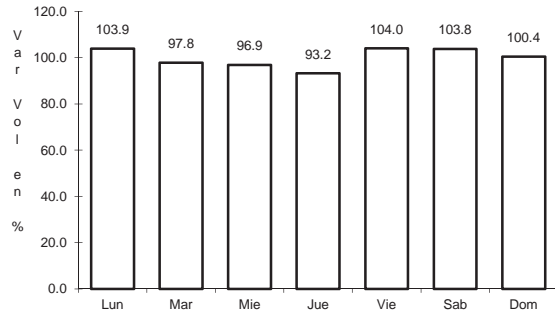
Km: 9.80      Tipo: 1      Sent: 2

Km: 119.63      Tipo: 1      Sent: 0

7 CARR: Ent. Alpuyecá - Grutas de Cacahuamilpa

CLAVE: 00421

RUTA: MEX-166



Km: 0.00      Tipo: 3      Sent: 0

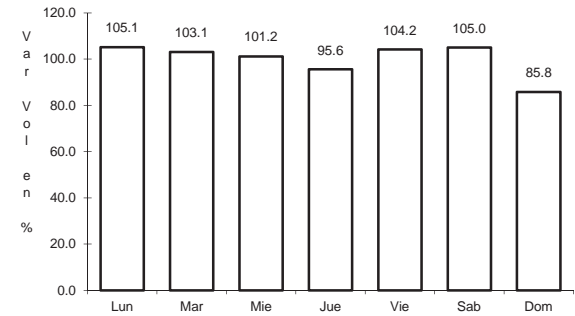
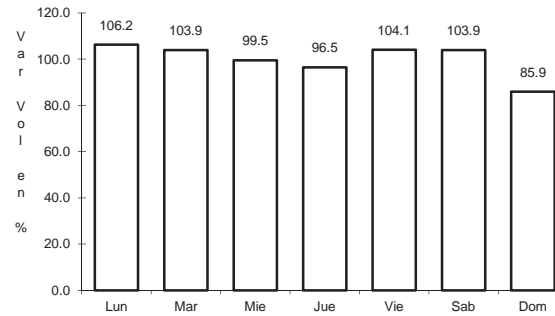
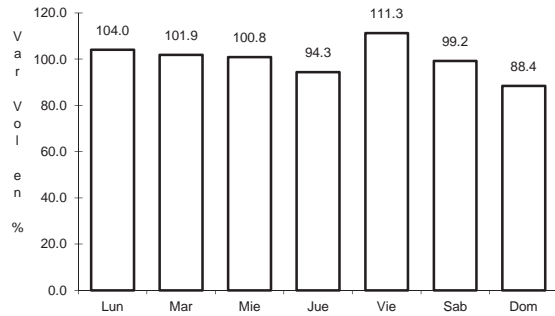
Km: 18.28      Tipo: 3      Sent: 0

Km: 41.26      Tipo: 1      Sent: 0

8 CARR: Iguala - Cd. Altamirano

CLAVE: 12195

RUTA: MEX-051



Km: 9.40      Tipo: 1      Sent: 0

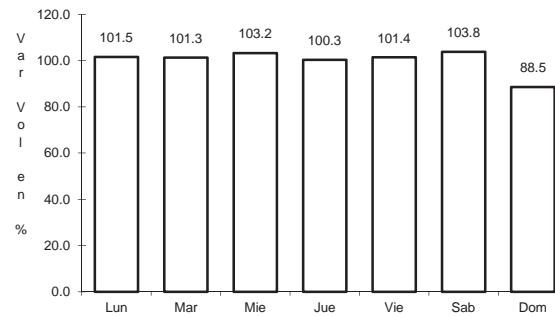
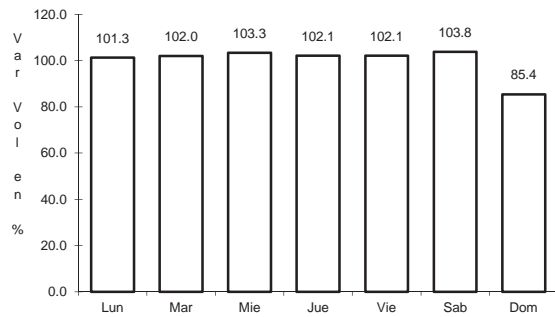
Km: 184.55      Tipo: 1      Sent: 1

Km: 184.55      Tipo: 1      Sent: 2

9 CARR: La Sabana - Puerto Marqués

CLAVE: 12291

RUTA: MEX-200



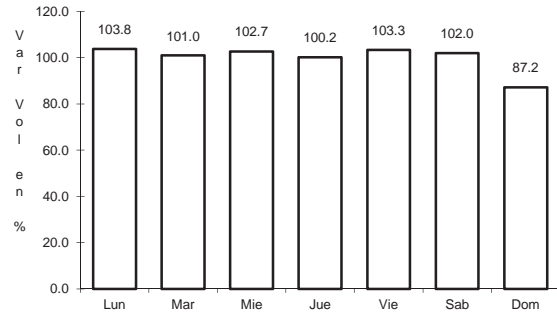
Km: 0.00      Tipo: 3      Sent: 1

Km: 0.00      Tipo: 3      Sent: 2

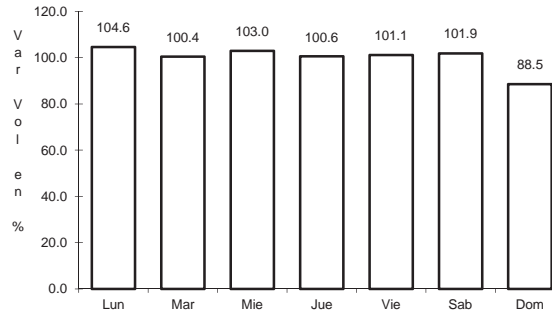
10 CARR: Las Cruces - Pinotepa Nacional

CLAVE: 00073

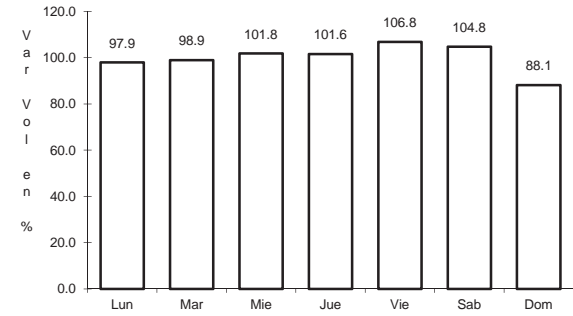
RUTA: MEX-200



Km: 0.00                      Tipo: 3                      Sent: 1



Km: 0.00                      Tipo: 3                      Sent: 2

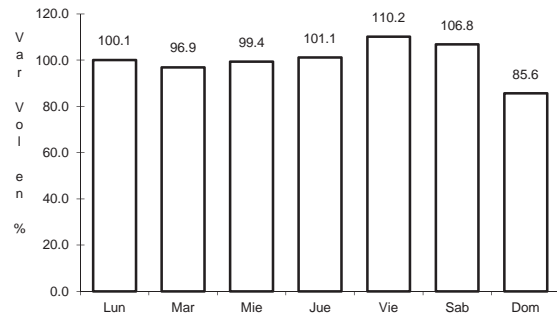


Km: 245.47                      Tipo: 3                      Sent: 0

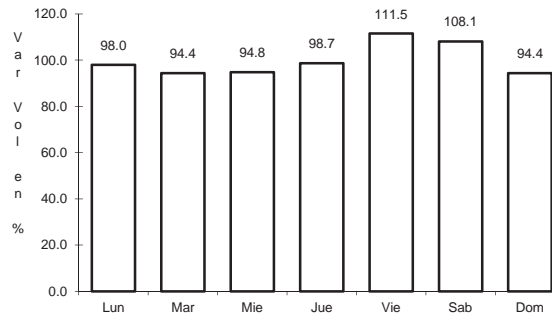
11 CARR: Libramiento Norte de Acapulco

CLAVE: 12421

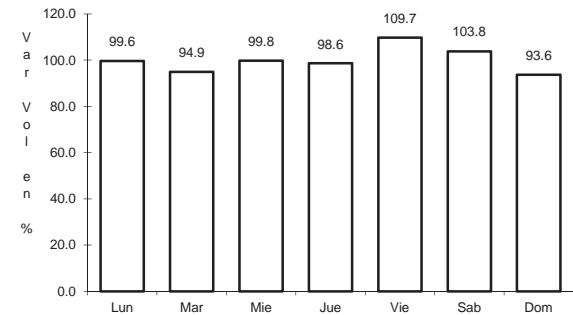
RUTA: MEX-095



Km: 0.00                      Tipo: 3                      Sent: 0



Km: 6.40                      Tipo: 3                      Sent: 0

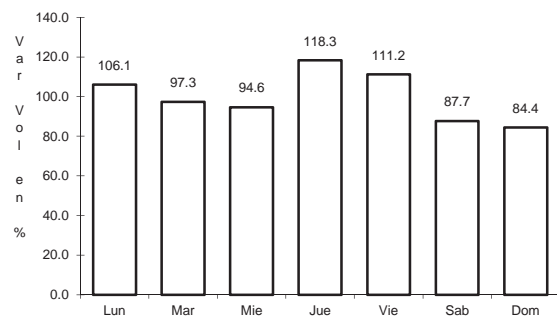


Km: 21.10                      Tipo: 1                      Sent: 0

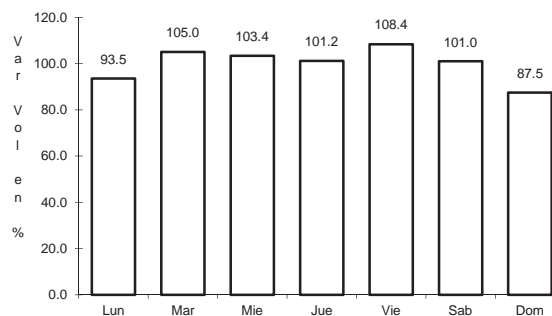
12 CARR: Milpillas - T. C. (Acapulco - Zihuatanejo)

CLAVE: 12012

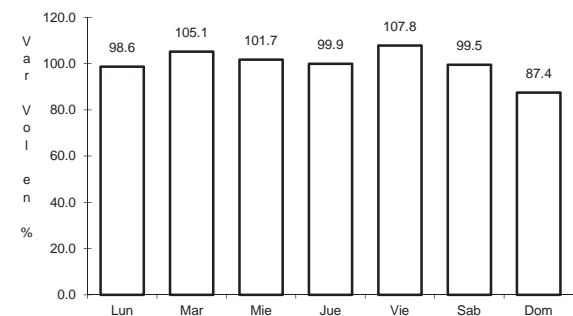
RUTA: MEX-196



Km: 0.00                      Tipo: 3                      Sent: 0



Km: 237.00                      Tipo: 1                      Sent: 1

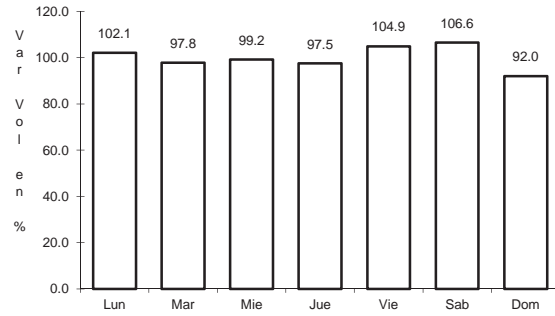


Km: 237.00                      Tipo: 1                      Sent: 2

13 CARR: Ramal a Aeropuerto Zihuatanejo

CLAVE: 12423

RUTA: MEX-200

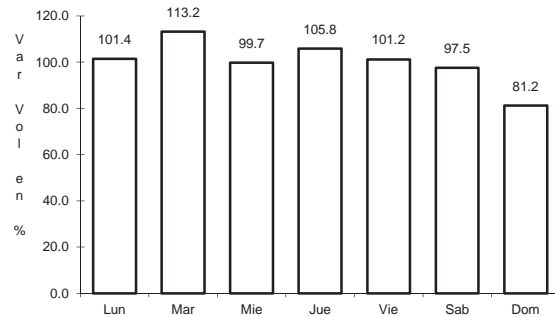


Km: 0.00      Tipo: 3      Sent: 0

14 CARR: Ramal a La Unión

CLAVE:

RUTA: MEX-200

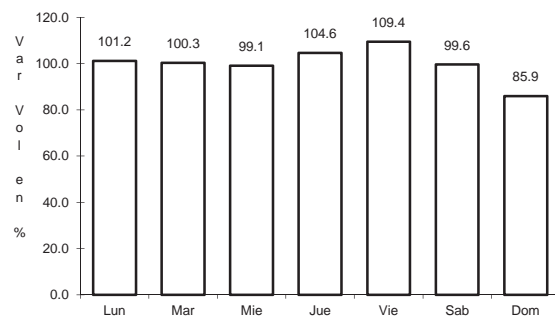


Km: 0.00      Tipo: 3      Sent: 0

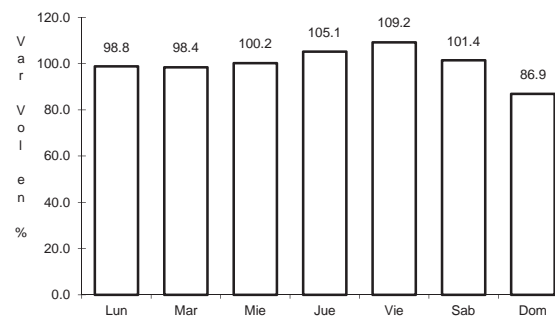
15 CARR: San Juan de Los Llanos - Ometepec

CLAVE: 12011

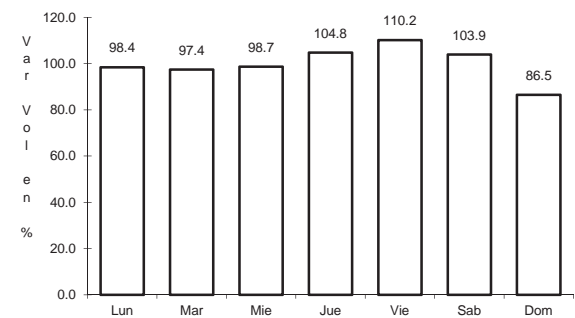
RUTA: MEX-200



Km: 0.00      Tipo: 3      Sent: 0



Km: 15.94      Tipo: 1      Sent: 1

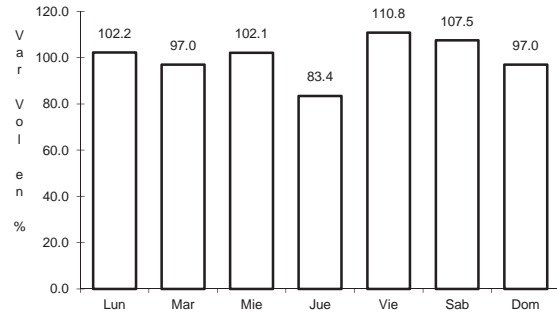


Km: 15.94      Tipo: 1      Sent: 2

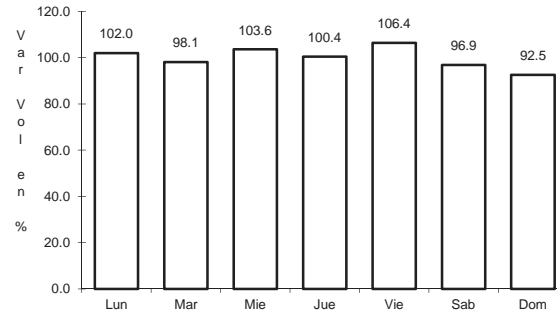
16 CARR: Tierra Colorada - Cruz Grande

CLAVE: 12420

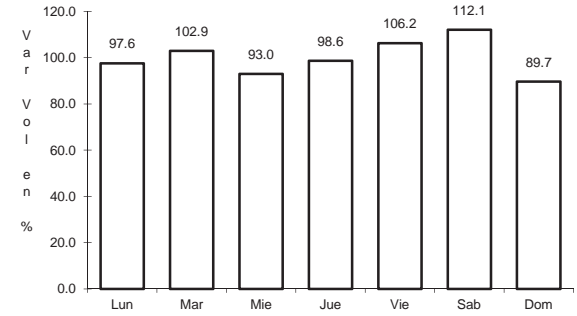
RUTA: MEX-198



Km: 0.00                      Tipo: 3                      Sent: 0



Km: 61.00                      Tipo: 1                      Sent: 0

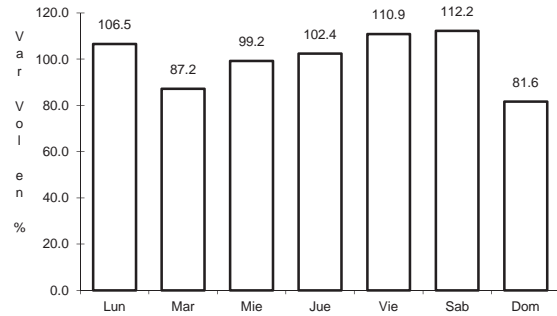


Km: 113.80                      Tipo: 1                      Sent: 0

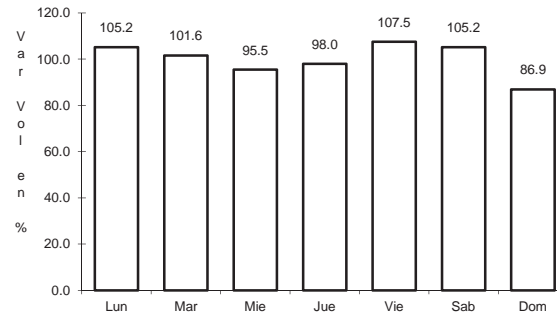
17 CARR: Toluca - Cd. Altamirano

CLAVE: 00020

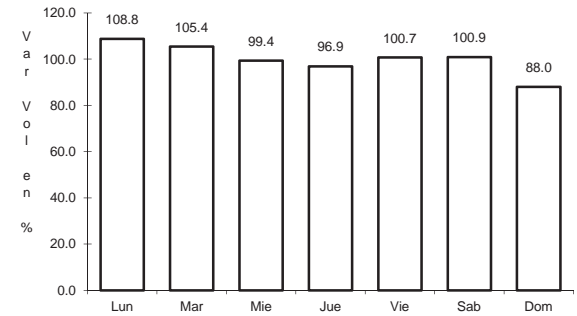
RUTA: MEX-134



Km: 1.78                      Tipo: 3                      Sent: 1



Km: 1.78                      Tipo: 3                      Sent: 2

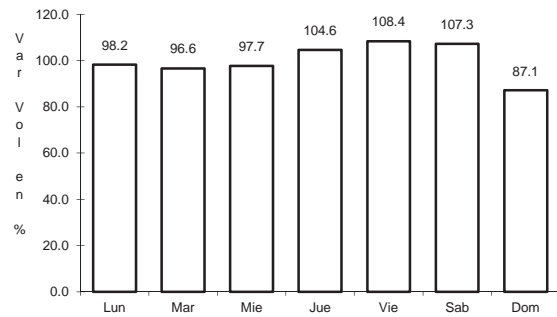


Km: 216.00                      Tipo: 1                      Sent: 0

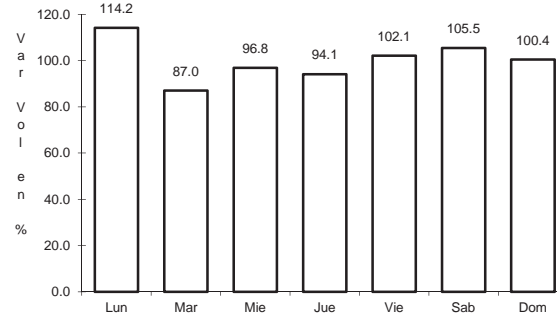
18 CARR: Zihuatanejo - La Mira

CLAVE: 00121

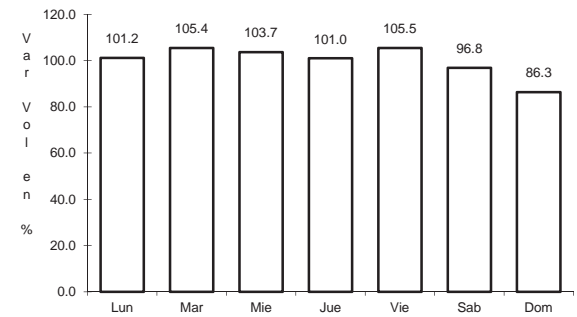
RUTA: MEX-200



Km: 0.00                      Tipo: 3                      Sent: 1



Km: 0.00                      Tipo: 3                      Sent: 2

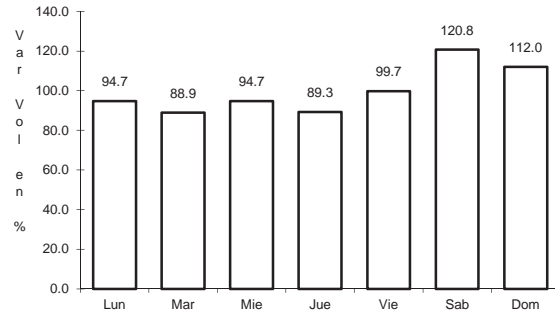


Km: 123.60                      Tipo: 1                      Sent: 0

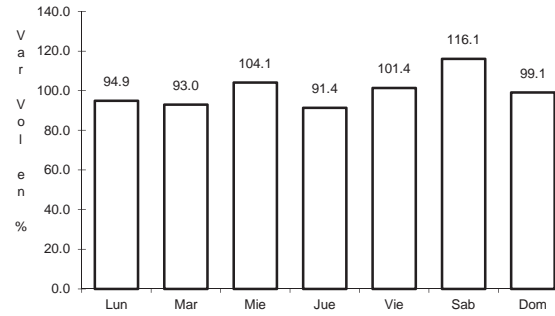
19 CARR: C.D. Puente de Ixtla - Iguala (Cuota)

CLAVE: 00043

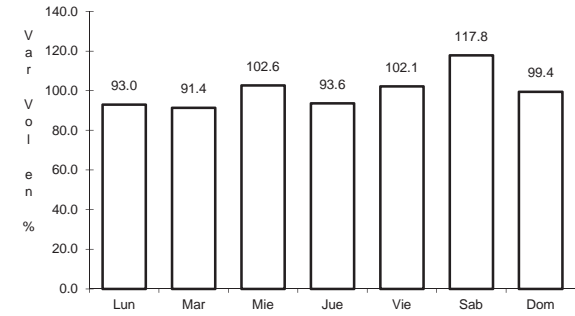
RUTA: MEX-091D



Km: 2.00                      Tipo: 3                      Sent: 0



Km: 33.58                      Tipo: 3                      Sent: 0

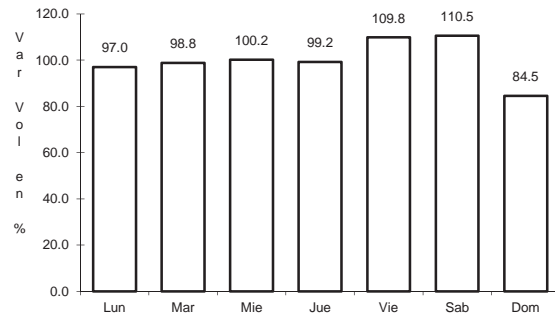


Km: 59.50                      Tipo: 1                      Sent: 0

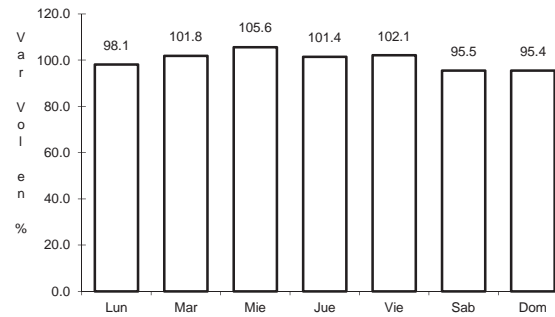
20 CARR: Cuernavaca - Acapulco (Cuota)

CLAVE: 00045

RUTA: MEX-095D



Km: 0.00                      Tipo: 3                      Sent: 1

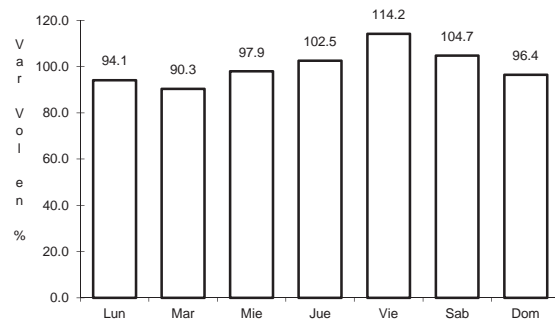


Km: 0.00                      Tipo: 3                      Sent: 2

21 CARR: Libramiento de Técpan (Cuota)

CLAVE: 00073

RUTA: MEX-200D



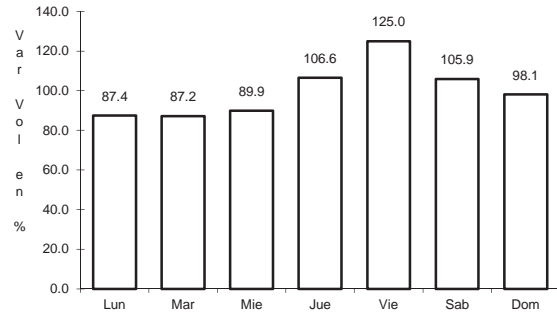
Km: 0.00                      Tipo: 3                      Sent: 0



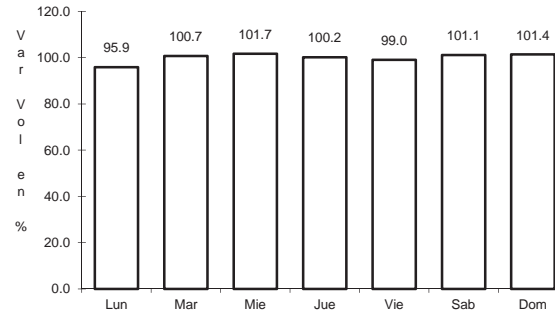
22 CARR: Nueva Italia - Lázaro Cárdenas (Cuota)

CLAVE: 00032

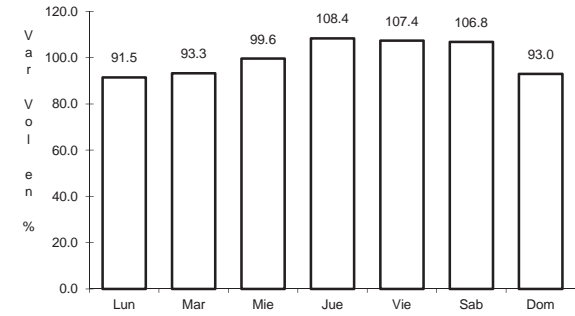
RUTA: MEX-014D



Km: 59.40                      Tipo: 3                      Sent: 0



Km: 187.00                      Tipo: 1                      Sent: 0

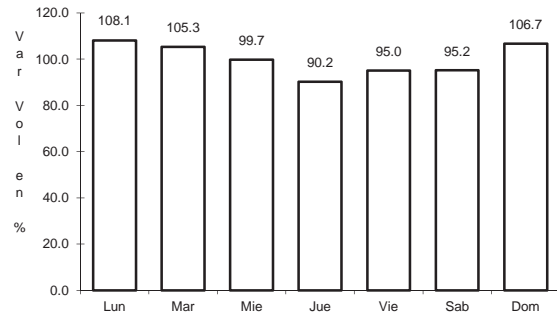


Km: 187.00                      Tipo: 3                      Sent: 0

23 CARR: Rancho Viejo - Taxco (Cuota)

CLAVE: 12010

RUTA: MEX-092D

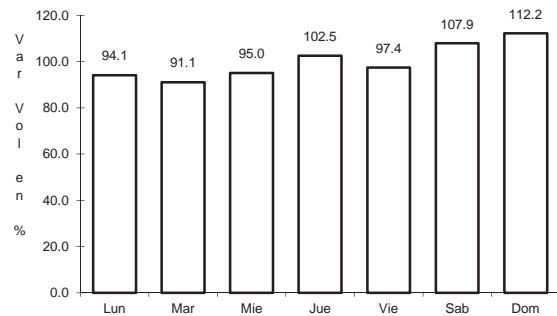


Km: 8.10                      Tipo: 1                      Sent: 0

24 CARR: Zacapalco - Rancho Viejo (Cuota)

CLAVE: 12010

RUTA: MEX-092D

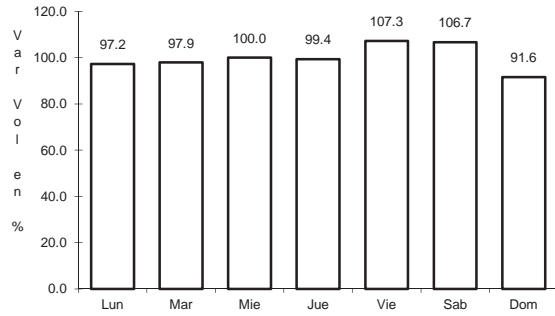


Km: 17.20                      Tipo: 1                      Sent: 0

25 CARR: Acapulco - Aeropuerto Acapulco

CLAVE: 12292

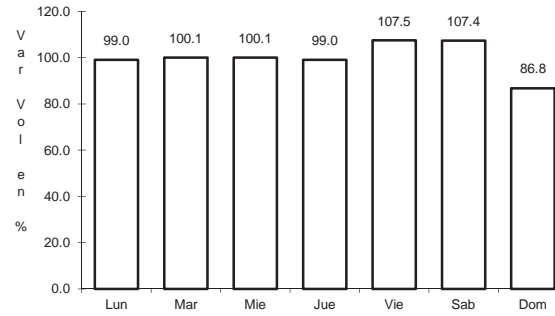
RUTA: GRO



Km: 8.70

Tipo: 1

Sent: 1



Km: 8.70

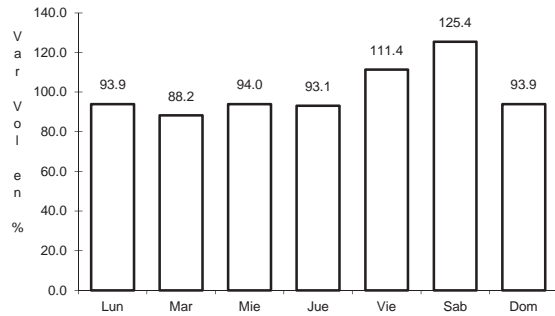
Tipo: 1

Sent: 2

26 CARR: Ent. Potrero - Lomas de Chapultepec

CLAVE: 12293

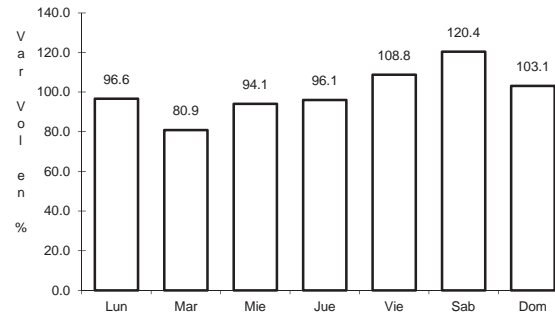
RUTA: GRO



Km: 0.00

Tipo: 3

Sent: 1



Km: 0.00

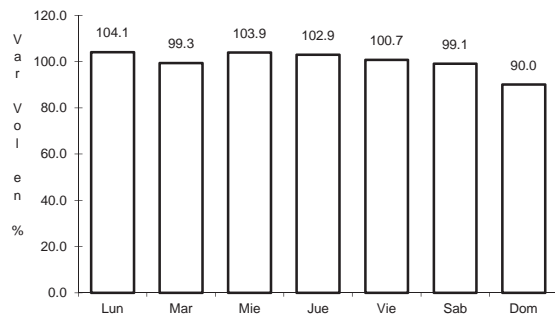
Tipo: 3

Sent: 2

27 CARR: Las Petaquillas - Quechultenango

CLAVE:

RUTA: GRO



Km: 0.00

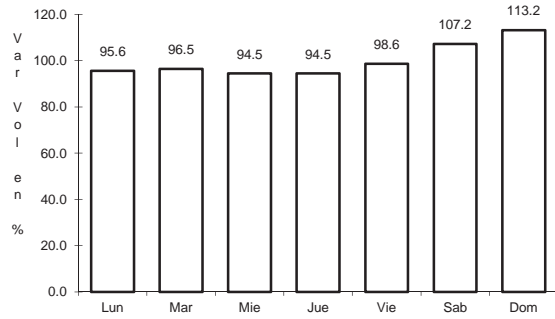
Tipo: 3

Sent: 0

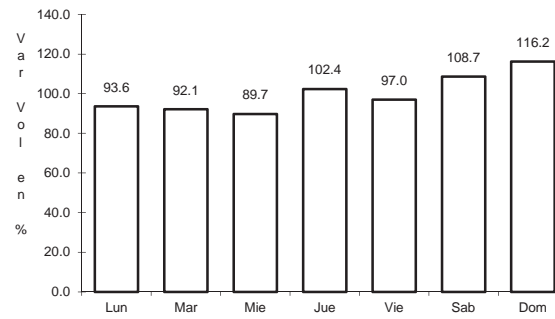
28 CARR: Pie de La Cuesta - Barra de Coyuca

CLAVE: 12427

RUTA: GRO



Km: 0.00                      Tipo: 3                      Sent: 0

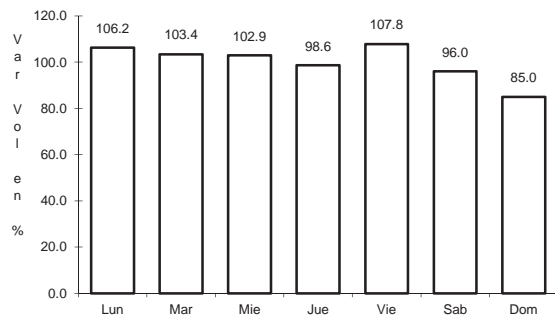


Km: 16.50                      Tipo: 1                      Sent: 0

29 CARR: Ramal a Cocula

CLAVE: 12082

RUTA: GRO

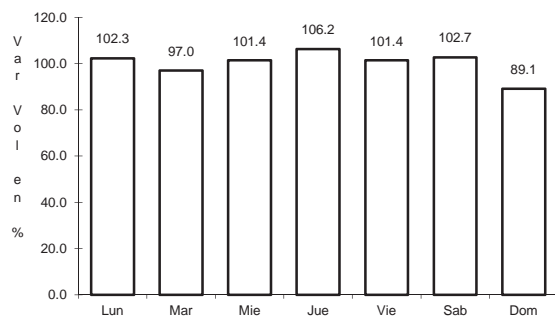


Km: 0.00                      Tipo: 3                      Sent: 0

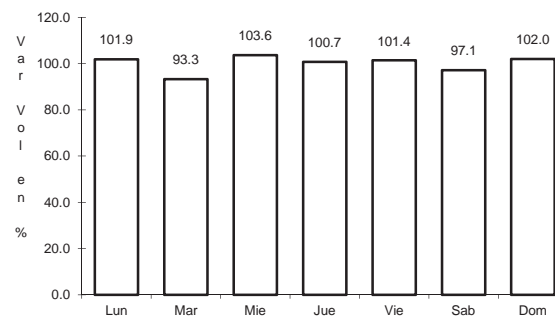
30 CARR: T. C. (Iguala - Chilpancingo) - Atenango del Río

CLAVE: 12001

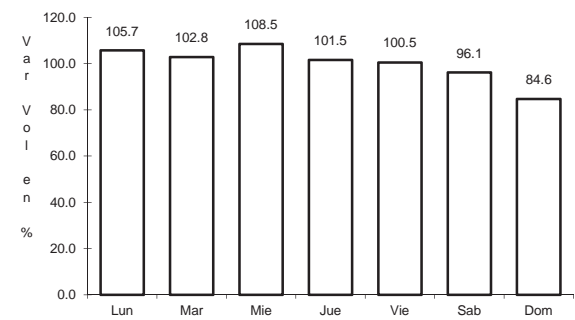
RUTA: GRO-001



Km: 0.00                      Tipo: 3                      Sent: 0



Km: 22.00                      Tipo: 3                      Sent: 0

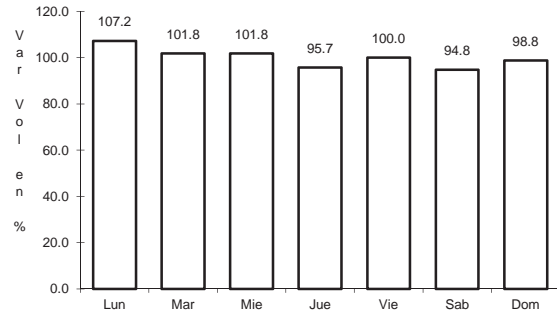


Km: 62.00                      Tipo: 1                      Sent: 0

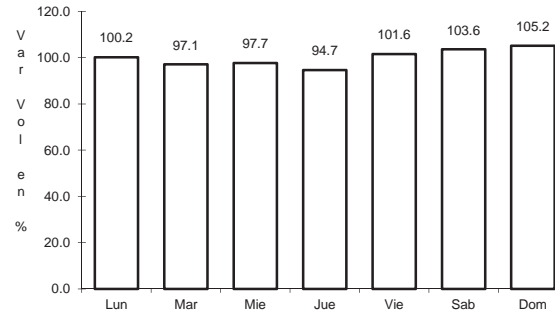
31 CARR: Taxco - Ixcateopan

CLAVE: 12083

RUTA: GRO



Km: 0.00                      Tipo: 3                      Sent: 0

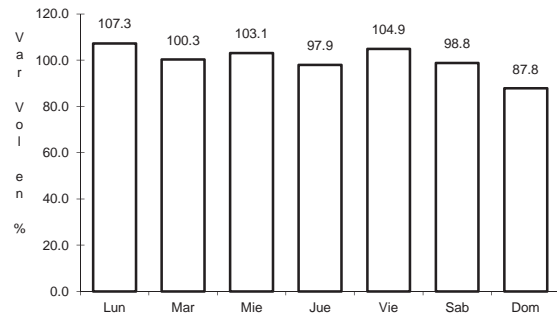


Km: 36.00                      Tipo: 1                      Sent: 0

32 CARR: Teloloapan - Apaxtla de Castrejón

CLAVE: 12081

RUTA: GRO

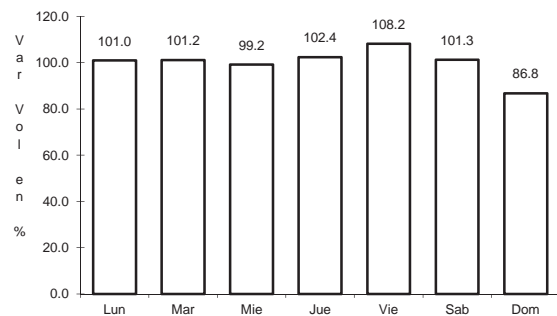


Km: 0.00                      Tipo: 3                      Sent: 0

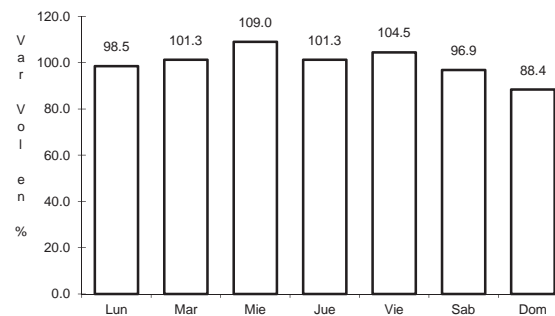
33 CARR: Tlapa de Comonfort - Marquelia

CLAVE:

RUTA: GRO



Km: 0.00                      Tipo: 3                      Sent: 0

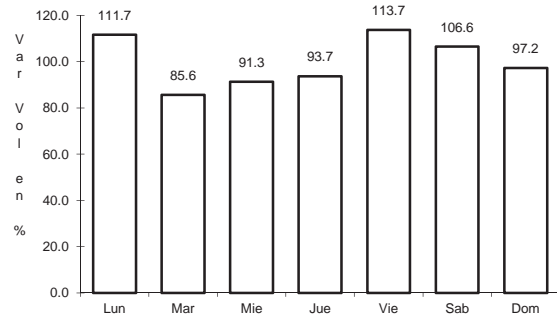


Km: 163.00                      Tipo: 1                      Sent: 0

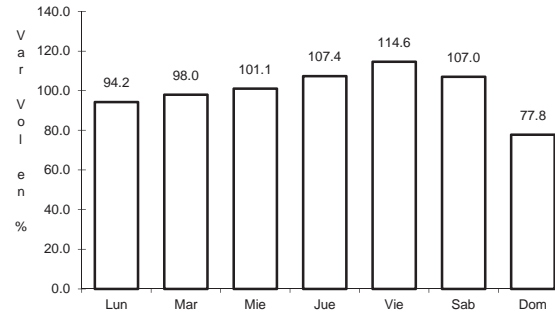
34 CARR: Puerto Marqués - La Venta (Cuota)

CLAVE: 00043

RUTA: GRO-D



Km: 6.33                      Tipo: 1                      Sent: 1

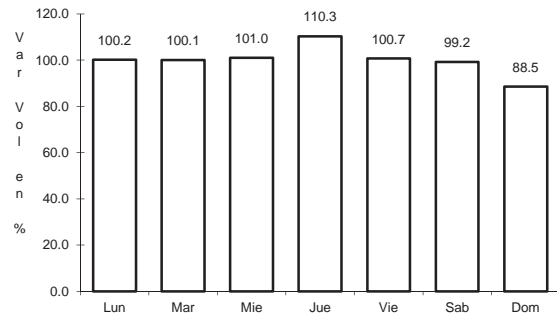


Km: 6.33                      Tipo: 1                      Sent: 2

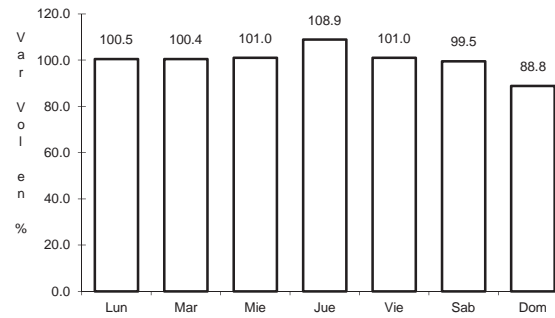
35 CARR: Toluca - Axixintla

CLAVE: 00122

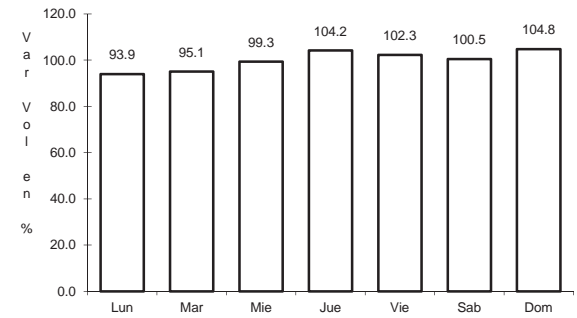
RUTA: EM-MEX-055



Km: 4.74                      Tipo: 1                      Sent: 1



Km: 4.74                      Tipo: 1                      Sent: 2



Km: 125.30                      Tipo: 1                      Sent: 0