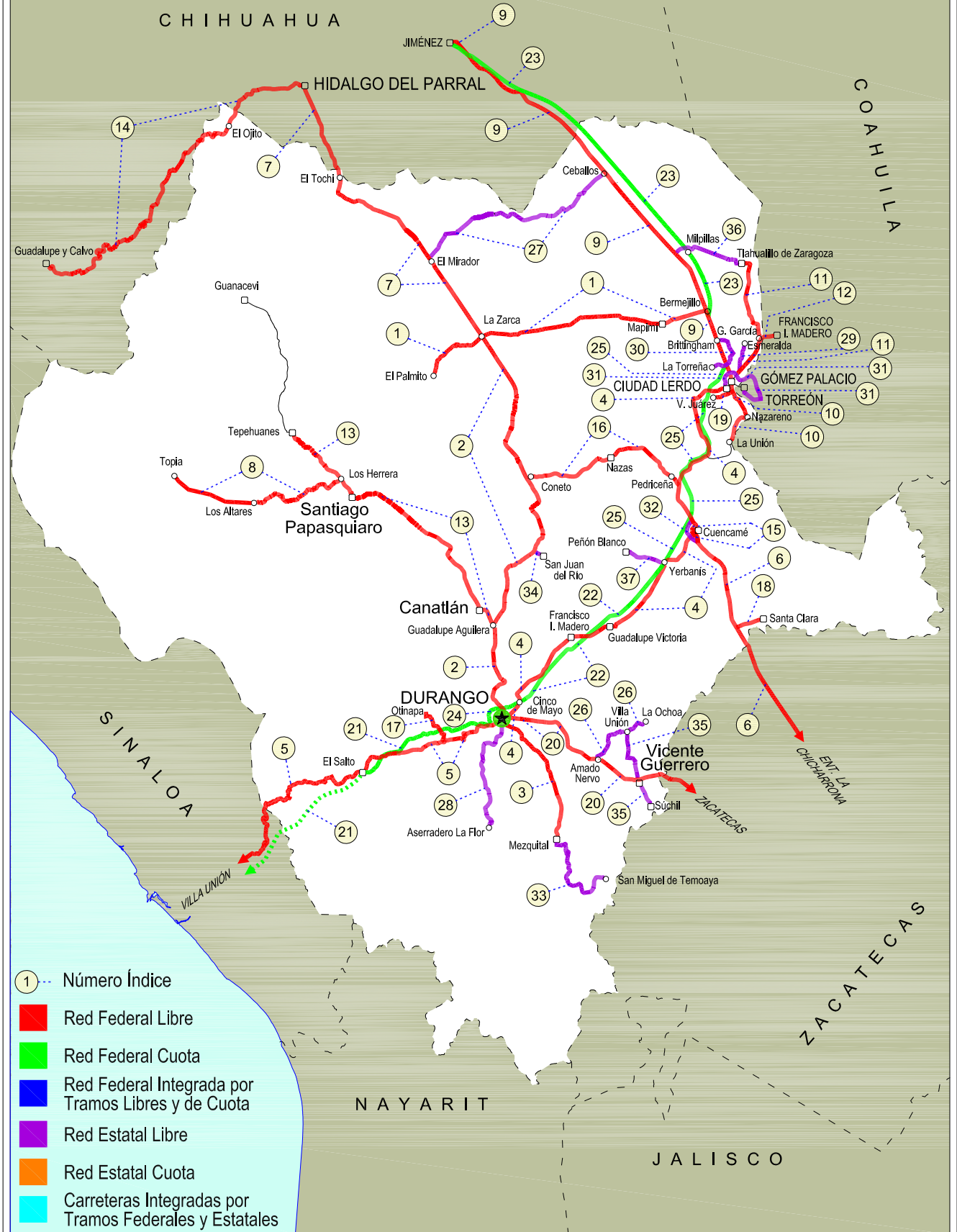


DURANGO

NO. INDICE	CARRETERA	RUTA
---RED FEDERAL LIBRE---		
1	Bermejillo - El Palmito	MEX-030
2	Durango - Ent. La Zarca	MEX-045
3	Durango - Mezquital	MEX-023
4	Durango - Torreón	MEX-040
5	Durango - Villa Unión	MEX-040
6	Ent. La Chicharrona - Cuencamé	MEX-049
7	Ent. La Zarca - Hidalgo del Parral	MEX-045
8	Ent. Los Herrera - Topia	MEX-036
9	Gómez Palacio - Jiménez	MEX-049
10	Gómez Palacio - La Unión	MEX-040
11	Gómez Palacio - Tlahualillo	MEX-040
12	Gregorio García - Francisco I. Madero	MEX-040
13	Guadalupe Aguilera - Tepehuanes	MEX-023
14	Hidalgo del Parral - Guadalupe y Calvo	MEX-024
15	Libramiento Cuencamé	MEX
16	Pedriceña - Ent. Rodeo	MEX-034
17	Ramal a Olinapa	MEX
18	Ramal a Santa Clara	MEX-049
19	Ramal a Villa Juárez	MEX-040
20	Zacatecas - Durango	MEX-045
---RED FEDERAL DE CUOTA---		
21	Durango - Mazatlán (Cuota)	MEX-040D
22	Durango - Yerbanís (Cuota)	MEX-040D
23	Gómez Palacio - Corralitos (Cuota)	MEX-049D
24	Libramiento de Durango (Cuota)	MEX-040D
25	Yerbanís - Gómez Palicio (Cuota)	MEX-040D
---RED ESTATAL LIBRE---		
26	Amado Nervo - La Ochoa	DGO-542
27	Ceballos - El Mirador	DGO-044
28	Durango - Aserradero La Flor	DGO-115
29	Jabonoso - Esmeralda	DGO-363
30	La Torreña - Brittingham	DGO-325
31	Libramiento de Torreón	COA
32	Libramiento Exterior Cuencamé	DGO
33	Mezquital - San Miguel de Temoaya	DGO
34	Ramal a San Juan del Río	DGO-290
35	Súchil - Villa Unión	DGO-241
36	Tlahualillo de Zaragoza - T.C. Gómez Palacio - Jiménez	DGO
37	Yerbanís - Peñón Blanco	DGO-316

10 DURANGO

SECRETARÍA DE COMUNICACIONES Y TRANSPORTES
DIRECCIÓN GENERAL DE SERVICIOS TÉCNICOS



DURANGO

1 CARR: Bermejillo - El Palmito

CLAVE: 10105

RUTA: MEX-030

AÑO: 2013

LUGAR	ESTACION				CLASIFICACION VEHICULAR EN PORCIENTO													COORDENADAS		
	KM	TE	SC	TDPA	M	A	B	C2	C3	T3S2	T3S3	T3S2R4	OTROS	A	B	C	K'	D	LATITUD	LONGITUD
Bermejillo	0.00	3	0	2364	0.9	66.6	1.3	12.5	6.1	6.6	2.1	2.6	1.3	67.5	1.3	31.2	0.102	0.512	25.891925	-103.632854
Santo Domingo	86.00	1	0	461	0.3	67.3	2.0	11.1	4.9	6.1	3.7	4.6	0.0	67.6	2.0	30.4	0.089	0.515	25.817252	-104.424325
Santo Domingo	86.00	3	0	484	0.2	64.5	2.0	14.8	6.0	6.0	3.1	3.4	0.0	64.7	2.0	33.3	0.093	0.500	25.813766	-104.448068
Ent. La Zarca	120.00	1	0	588	1.2	70.8	1.8	14.6	2.0	5.1	2.2	2.2	0.1	72.0	1.8	26.2	0.119	0.512	25.783416	-104.761432
Ent. La Zarca	120.00	3	0	309	0.6	74.6	1.5	18.4	0.0	3.0	1.9	0.0	0.0	75.2	1.5	23.3	0.081	0.504	25.781983	-104.764786
El Palmito	160.00	1	0	251	1.1	77.2	0.9	18.5	1.3	0.7	0.3	0.0	0.0	78.3	0.9	20.8	0.104	0.500	25.615256	-105.003410

2 CARR: Durango - Ent. La Zarca

CLAVE: 10016

RUTA: MEX-045

AÑO: 2013

LUGAR	ESTACION				CLASIFICACION VEHICULAR EN PORCIENTO													COORDENADAS		
	KM	TE	SC	TDPA	M	A	B	C2	C3	T3S2	T3S3	T3S2R4	OTROS	A	B	C	K'	D	LATITUD	LONGITUD
Durango	0.00	3	1	13298	1.2	89.4	1.3	4.2	0.4	0.8	2.0	0.3	0.4	90.6	1.3	8.1	0.079	0.507	24.041608	-104.658184
Durango	0.00	3	2	13672	0.8	89.2	1.5	4.3	0.4	1.0	2.1	0.3	0.4	90.0	1.5	8.5	0.073	0.507	24.041610	-104.658187
Caseta Fiscal Zona Industrial	5.30	1	1	7917	2.0	83.3	1.9	7.3	2.9	1.6	0.7	0.1	0.2	85.3	1.9	12.8	0.075	0.520	24.047924	-104.658119
Caseta Fiscal Zona Industrial	5.30	1	2	7292	2.5	80.6	2.0	8.8	3.1	2.0	0.8	0.1	0.1	83.1	2.0	14.9	0.074	0.520	24.047922	-104.658121
Caseta Fiscal Zona Industrial	5.30	3	1	6386	1.7	82.1	1.8	8.4	2.4	1.9	1.2	0.1	0.4	83.8	1.8	14.4	0.084	0.500	24.059162	-104.656205
Caseta Fiscal Zona Industrial	5.30	3	2	6378	1.7	79.9	2.2	9.5	2.7	2.3	1.3	0.1	0.3	81.6	2.2	16.2	0.087	0.500	24.059162	-104.656205
X. Periférico de Durango	6.20	3	1	6239	0.5	78.3	3.4	10.5	3.1	2.2	1.6	0.2	0.2	78.8	3.4	17.8	0.101	0.503	24.079400	-104.668209
X. Periférico de Durango	6.20	3	2	6233	0.6	76.6	4.0	12.2	3.6	2.5	0.1	0.2	0.2	77.2	4.0	18.8	0.126	0.503	24.079350	-104.668227
T. Der. San José del Molino	28.00	1	0	4495	3.0	70.4	4.0	12.1	1.9	4.3	2.7	0.6	1.0	73.4	4.0	22.6	0.083	0.506	24.208106	-104.664755
T. Izq. Canatlán	55.25	1	0	5205	0.8	78.1	3.0	9.4	2.0	4.4	1.7	0.1	0.5	78.9	3.0	18.1	0.081	0.505	24.431478	-104.698970
T. Izq. Canatlán	55.25	3	0	2252	1.2	75.3	4.6	10.4	2.1	3.5	1.4	0.9	0.6	76.5	4.6	18.9	0.090	0.501	24.444882	-104.699174
T. Der. San Juan del Río	105.81	1	0	2368	1.0	75.4	4.9	11.5	1.5	3.1	1.0	1.0	0.6	76.4	4.9	18.7	0.082	0.507	24.765460	-104.545704
T. Der. San Juan del Río	105.81	3	0	1827	0.4	73.0	3.3	16.2	2.0	3.3	1.4	0.1	0.3	73.4	3.3	23.3	0.087	0.522	24.800698	-104.498779
T. Der. Nazas	155.50	3	0	2114	0.9	77.3	2.7	14.0	0.8	2.7	1.0	0.3	0.3	78.2	2.7	19.1	0.074	0.504	25.131091	-104.540550
T. Der. Rodeo	160.70	1	0	2443	1.1	75.4	2.2	17.0	0.7	2.7	0.7	0.1	0.1	76.5	2.2	21.3	0.077	0.504	25.158977	-104.551148
T. Izq. Abasolo	178.00	3	0	1095	0.9	71.9	3.7	10.8	2.7	5.7	3.7	0.4	0.2	72.8	3.7	23.5	0.099	0.524	25.309558	-104.640414
Ent. La Zarca	239.50	1	0	1793	0.6	68.8	5.0	14.1	2.5	4.9	3.1	0.5	0.5	69.4	5.0	25.6	0.100	0.516	25.780670	-104.761894

3 CARR: Durango - Mezquital

CLAVE: 10423

RUTA: MEX-023

AÑO: 2013

LUGAR	ESTACION				CLASIFICACION VEHICULAR EN PORCIENTO													COORDENADAS		
	KM	TE	SC	TDPA	M	A	B	C2	C3	T3S2	T3S3	T3S2R4	OTROS	A	B	C	K'	D	LATITUD	LONGITUD
Durango	0.00	3	1	5945	4.2	81.0	1.9	10.1	1.1	0.7	0.6	0.0	0.4	85.2	1.9	12.9	0.168	0.502	23.993468	-104.630153
Durango	0.00	3	2	6001	4.1	78.6	2.0	12.1	1.2	1.0	0.7	0.0	0.3	82.7	2.0	15.3	0.160	0.502	23.993468	-104.630153

DURANGO

3 CARR: Durango - Mezquital

CLAVE: 10423

RUTA: MEX-023

AÑO: 2013

LUGAR	ESTACION				CLASIFICACION VEHICULAR EN PORCIENTO										COORDENADAS					
	KM	TE	SC	TDPA	M	A	B	C2	C3	T3S2	T3S3	T3S2R4	OTROS	A	B	C	K'	D	LATITUD	LONGITUD
Gabino Santillán	8.00	3	1	2865	3.8	76.5	2.1	12.2	3.2	1.0	1.1	0.0	0.1	80.3	2.1	17.6	0.108	0.502	23.968375	-104.576002
Gabino Santillán	8.00	3	2	2843	3.4	75.1	2.5	13.1	3.6	1.1	1.1	0.0	0.1	78.5	2.5	19.0	0.091	0.502	23.968375	-104.576002
T. Izq. Monte Morelos	13.00	3	0	4584	3.3	75.0	2.5	10.7	4.0	3.3	0.7	0.2	0.3	78.3	2.5	19.2	0.080	0.502	23.964953	-104.573113
Pino Suarez	24.20	3	0	1395	4.3	72.1	0.7	20.1	1.1	1.0	0.6	0.0	0.1	76.4	0.7	22.9	0.091	0.505	23.875195	-104.484229
Mezquital	82.00	1	1	864	3.6	72.6	2.8	18.0	1.5	0.9	0.6	0.0	0.0	76.2	2.8	21.0	0.079	0.505	23.492187	-104.384541
Mezquital	82.00	1	2	879	1.9	72.4	3.0	19.4	1.7	1.0	0.6	0.0	0.0	74.3	3.0	22.7	0.086	0.505	23.492193	-104.384543

4 CARR: Durango - Torreón

CLAVE: 10085

RUTA: MEX-040

AÑO: 2013

LUGAR	ESTACION				CLASIFICACION VEHICULAR EN PORCIENTO										COORDENADAS					
	KM	TE	SC	TDPA	M	A	B	C2	C3	T3S2	T3S3	T3S2R4	OTROS	A	B	C	K'	D	LATITUD	LONGITUD
Durango	0.00	3	1	10309	3.1	83.0	1.4	8.1	1.1	1.7	1.1	0.1	0.4	86.1	1.4	12.5	0.068	0.522	24.076451	-104.591114
Durango	0.00	3	2	9453	1.8	83.6	1.6	8.5	1.1	1.7	1.2	0.1	0.4	85.4	1.6	13.0	0.076	0.522	24.076448	-104.591122
T. Der. Cd. de Los Niños	7.70	3	1	6447	1.8	84.6	1.9	7.3	0.9	1.9	0.9	0.2	0.5	86.4	1.9	11.7	0.085	0.503	24.080314	-104.587987
T. Der. Cd. de Los Niños	7.70	3	2	6368	1.8	82.7	2.1	8.5	1.0	2.1	1.1	0.2	0.5	84.5	2.1	13.4	0.082	0.503	24.080314	-104.587987
X. Periférico de Durango	9.00	1	1	6763	1.6	82.9	1.6	8.0	1.2	2.4	1.2	0.5	0.6	84.5	1.6	13.9	0.069	0.515	24.088620	-104.580908
X. Periférico de Durango	9.00	1	2	6376	1.3	80.9	1.8	9.5	1.5	2.6	1.3	0.5	0.6	82.2	1.8	16.0	0.075	0.515	24.088613	-104.580940
T. Der. Aeropuerto	9.42	3	1	4888	2.2	82.6	0.9	8.1	1.3	2.4	1.6	0.3	0.6	84.8	0.9	14.3	0.074	0.504	24.098735	-104.576216
T. Der. Aeropuerto	9.42	3	2	4801	1.6	80.8	1.0	9.8	1.4	2.7	1.7	0.3	0.7	82.4	1.0	16.6	0.076	0.504	24.098657	-104.576240
La Calera	10.85	3	0	6929	1.6	71.5	2.5	12.1	2.6	5.2	2.7	0.9	0.9	73.1	2.5	24.4	0.076	0.505	24.111445	-104.571885
Abraham González	27.10	3	0	3880	1.0	67.0	2.1	14.1	2.4	7.9	3.5	1.0	1.0	68.0	2.1	29.9	0.090	0.501	24.200265	-104.526153
Francisco I. Madero	56.30	1	0	3854	0.5	68.5	4.1	11.1	2.2	8.4	3.7	1.0	0.5	69.0	4.1	26.9	0.076	0.507	24.393151	-104.330090
Francisco I. Madero	56.30	3	0	3779	0.6	67.6	3.5	11.4	2.0	9.5	3.7	0.9	0.8	68.2	3.5	28.3	0.078	0.509	24.405257	-104.303310
Guadalupe Victoria	77.50	1	0	4712	1.0	70.1	3.7	10.3	2.0	8.2	3.2	0.9	0.6	71.1	3.7	25.2	0.075	0.506	24.446871	-104.138155
Guadalupe Victoria	77.50	3	0	5796	1.6	69.3	3.3	12.6	2.3	7.1	2.5	0.6	0.7	70.9	3.3	25.8	0.080	0.506	24.449246	-104.110813
T. Der. Ignacio Allende	90.13	1	0	4514	0.7	62.8	3.9	12.9	2.7	10.6	3.7	1.7	1.0	63.5	3.9	32.6	0.074	0.505	24.497646	-104.023362
T. Der. Ignacio Allende	90.13	3	0	2869	0.5	53.9	5.1	14.2	5.3	12.7	5.6	2.1	0.6	54.4	5.1	40.5	0.077	0.509	24.499458	-104.020166
T. Izq. Peñón Blanco	120.90	1	0	2183	0.5	49.3	4.7	13.9	5.9	15.5	7.0	2.4	0.8	49.8	4.7	45.5	0.081	0.510	24.732654	-103.843696
T. Izq. Peñón Blanco	120.90	3	0	2105	0.5	53.8	3.3	11.2	6.6	14.6	6.8	2.2	1.0	54.3	3.3	42.4	0.067	0.514	24.741632	-103.838275
Cuencamé	144.30	1	0	2059	0.8	52.8	3.1	12.2	6.0	16.1	6.4	2.1	0.5	53.6	3.1	43.3	0.083	0.510	24.850283	-103.715977
Cuencamé	144.30	3	0	6329	0.5	48.3	5.2	10.6	5.8	16.6	5.9	5.9	1.2	48.8	5.2	46.0	0.067	0.512	24.908838	-103.704745
T. Izq. Nazas	171.61	1	0	4575	1.0	50.2	2.8	10.2	7.8	14.2	8.0	4.0	1.8	51.2	2.8	46.0	0.059	0.518	25.086594	-103.771218
T. Izq. Nazas	171.61	3	0	5385	1.1	66.6	3.3	10.2	4.1	7.8	3.2	2.7	1.0	67.7	3.3	29.0	0.070	0.506	25.090967	-103.770068
T. Der. Villa Juárez	194.40	3	0	4250	0.9	49.8	6.4	10.4	7.4	12.8	7.5	3.2	1.6	50.7	6.4	42.9	0.066	0.500	25.225797	-103.628518
León Guzmán	229.58	3	0	8458	0.7	68.0	3.8	9.4	3.5	8.9	2.7	2.0	1.0	68.7	3.8	27.5	0.060	0.513	25.504578	-103.654382

DURANGO

4 CARR: Durango - Torreón

CLAVE: 10085

RUTA: MEX-040

AÑO: 2013

LUGAR	ESTACION				CLASIFICACION VEHICULAR EN PORCIENTO										COORDENADAS					
	KM	TE	SC	TDPA	M	A	B	C2	C3	T3S2	T3S3	T3S2R4	OTROS	A	B	C	K'	D	LATITUD	LONGITUD
Cd. Lerdo	244.80	1	1	5741	1.1	73.0	2.2	7.3	2.8	7.3	3.1	2.0	1.2	74.1	2.2	23.7	0.075	0.510	25.512043	-103.542119
Cd. Lerdo	244.80	1	2	5511	1.7	69.7	2.4	7.8	3.1	8.4	3.3	2.2	1.4	71.4	2.4	26.2	0.071	0.510	25.512050	-103.542112
T. Izq. Gómez Palacio	248.90	3	1	29787	2.2	89.2	1.8	4.8	0.1	0.2	1.5	0.0	0.2	91.4	1.8	6.8	0.078	0.502	25.553732	-103.481659
T. Izq. Gómez Palacio	248.90	3	2	30022	2.1	88.7	1.9	5.2	0.1	0.2	1.6	0.0	0.2	90.8	1.9	7.3	0.078	0.502	25.553970	-103.481543
Lim. Edos. Term. Dgo. Ppia. Coah.	251.00																			
Torreón	255.80	1	1	18194	2.3	86.9	0.9	3.3	0.5	1.3	3.0	0.7	1.1	89.2	0.9	9.9	0.068	0.535	25.548335	-103.472066
Torreón	255.80	1	2	18168	2.3	85.5	1.0	3.7	0.5	1.5	3.5	0.7	1.3	87.8	1.0	11.2	0.071	0.535	25.548526	-103.471943

5 CARR: Durango - Villa Unión

CLAVE: 0083

RUTA: MEX-040

AÑO: 2013

LUGAR	ESTACION				CLASIFICACION VEHICULAR EN PORCIENTO										COORDENADAS					
	KM	TE	SC	TDPA	M	A	B	C2	C3	T3S2	T3S3	T3S2R4	OTROS	A	B	C	K'	D	LATITUD	LONGITUD
Durango	0.00	3	0	2188	1.5	63.8	3.8	12.2	5.3	8.1	4.3	0.4	0.6	65.3	3.8	30.9	0.084	0.501	23.995108	-104.733056
T. Der. Pino	22.86	3	0	1786	1.4	61.3	5.3	12.3	6.5	7.4	5.1	0.2	0.5	62.7	5.3	32.0	0.097	0.501	23.965824	-104.823398
T. Izq. Estación Navíos	58.42	3	0	1505	0.6	58.0	4.8	12.6	6.2	11.1	5.6	0.2	0.9	58.6	4.8	36.6	0.078	0.501	23.892133	-105.059494
Llano Grande	77.23	1	0	1688	2.9	60.7	3.9	11.0	5.3	10.0	5.2	0.3	0.7	63.6	3.9	32.5	0.079	0.503	23.868238	-105.194755
El Salto	99.76	3	0	2057	1.1	69.5	2.1	10.8	3.1	10.0	2.7	0.3	0.4	70.6	2.1	27.3	0.079	0.503	23.784319	-105.375923
La Ciudad	145.50	1	0	1613	1.8	54.7	4.0	10.6	5.5	17.0	4.5	1.1	0.8	56.5	4.0	39.5	0.071	0.514	23.731734	-105.668797
La Ciudad	145.50	3	0	1422	2.1	47.2	5.4	10.1	6.9	19.8	5.4	1.6	1.5	49.3	5.4	45.3	0.072	0.511	23.721831	-105.695959
Lim. Edos. Term. Dgo. Ppia. Sin.	198.50																			
T. C. Tepic - Mazatlán	294.40	1	0	4012	2.4	62.8	5.5	12.1	2.8	11.5	2.1	0.4	0.4	65.2	5.5	29.3	0.071	0.502	23.204701	-106.197922

6 CARR: Ent. La Chicharrona - Cuencamé

CLAVE: 00152

RUTA: MEX-049

AÑO: 2013

LUGAR	ESTACION				CLASIFICACION VEHICULAR EN PORCIENTO										COORDENADAS					
	KM	TE	SC	TDPA	M	A	B	C2	C3	T3S2	T3S3	T3S2R4	OTROS	A	B	C	K'	D	LATITUD	LONGITUD
Ent. La Chicharrona	0.00	3	1	4199	1.0	64.3	4.5	6.6	2.5	11.7	3.7	5.0	0.7	65.3	4.5	30.2	0.064	0.511	23.307696	-102.958864
Ent. La Chicharrona	0.00	3	2	4015	2.0	59.1	5.0	7.4	3.0	13.2	4.0	5.6	0.7	61.1	5.0	33.9	0.063	0.511	23.307699	-102.958927
T. Der. Cañitas de Felipe Pescador	25.86	1	1	3633	0.3	60.9	5.9	9.0	2.5	13.1	3.3	4.2	0.8	61.2	5.9	32.9	0.079	0.514	23.524219	-102.959706
T. Der. Cañitas de Felipe Pescador	25.86	1	2	3837	0.4	57.2	6.3	9.8	2.7	14.5	3.4	4.9	0.8	57.6	6.3	36.1	0.078	0.514	23.524220	-102.959821
Río Grande	60.00	1	0	6284	0.7	58.4	5.0	9.2	2.8	13.8	3.9	5.5	0.7	59.1	5.0	35.9	0.078	0.507	23.790686	-103.016103
Río Grande	60.00	3	0	7282	0.5	51.9	6.7	9.2	3.0	16.4	5.6	5.8	0.9	52.4	6.7	40.9	0.067	0.509	23.873090	-103.087038
T. Der. Nieves	78.00	3	0	5446	0.3	46.5	7.8	8.4	3.9	18.5	5.3	8.3	1.0	46.8	7.8	45.4	0.068	0.507	23.925271	-103.161016
X. C. Juan Aldama - Miguel Auza	124.50	1	0	6025	2.9	44.1	7.0	12.5	3.2	16.9	5.5	7.0	0.9	47.0	7.0	46.0	0.065	0.511	24.266180	-103.397572
X. C. Juan Aldama - Miguel Auza	124.50	3	0	7194	1.1	46.4	7.7	9.9	3.1	19.6	4.2	7.8	0.2	47.5	7.7	44.8	0.059	0.501	24.287540	-103.406456

DURANGO

6 CARR: Ent. La Chicharrona - Cuencamé

CLAVE: 00152

RUTA: MEX-049

AÑO: 2013

LUGAR	ESTACION				CLASIFICACION VEHICULAR EN PORCIENTO													COORDENADAS			
	KM	TE	SC	TDPA	M	A	B	C2	C3	T3S2	T3S3	T3S2R4	OTROS	A	B	C	K'	D	LATITUD	LONGITUD	
Lim. Edos. Term. Zac. Ppia. Dgo.	134.30																				
T. Der. Santa Clara	144.00	1	0	4747	0.3	43.4	7.8	8.6	4.1	21.6	5.0	8.1	1.1	43.7	7.8	48.5	0.061	0.517	24.432872	-103.484157	
T. Der. Santa Clara	144.00	3	0	4220	0.6	46.0	8.0	8.0	3.6	18.3	5.7	8.6	1.2	46.6	8.0	45.4	0.066	0.515	24.442276	-103.490350	
Cuencamé	199.10	1	0	4525	1.3	43.7	7.3	9.2	3.7	20.9	5.0	7.5	1.4	45.0	7.3	47.7	0.058	0.500	24.833103	-103.686467	

7 CARR: Ent. La Zarca - Hidalgo del Parral

CLAVE: 00488

RUTA: MEX-045

AÑO: 2013

LUGAR	ESTACION				CLASIFICACION VEHICULAR EN PORCIENTO													COORDENADAS		
	KM	TE	SC	TDPA	M	A	B	C2	C3	T3S2	T3S3	T3S2R4	OTROS	A	B	C	K'	D	LATITUD	LONGITUD
Ent. La Zarca	0.00	3	0	816	0.5	68.3	6.0	12.4	2.7	5.6	3.4	0.4	0.7	68.8	6.0	25.2	0.109	0.554	25.784522	-104.764657
T. Der. Ceballos	47.85	1	0	1036	2.0	74.4	3.7	10.0	1.5	5.0	2.9	0.2	0.3	76.4	3.7	19.9	0.103	0.502	26.139711	-105.028671
T. Der. Ceballos	47.85	3	0	1182	0.5	71.7	3.8	13.0	2.6	4.7	2.6	0.3	0.8	72.2	3.8	24.0	0.096	0.506	26.142436	-105.030773
T. Izq. Canutillo	92.35	3	0	1056	0.3	70.8	4.9	13.4	2.5	4.9	2.5	0.2	0.5	71.1	4.9	24.0	0.119	0.518	26.389268	-105.352162
Las Nieves	97.60	3	0	2484	0.9	74.5	2.8	12.8	2.0	3.8	2.0	0.5	0.7	75.4	2.8	21.8	0.083	0.514	26.400193	-105.405718
T. Izq. Ocampo	109.22	3	0	1287	0.3	68.5	4.3	13.6	3.2	5.2	3.2	0.7	1.0	68.8	4.3	26.9	0.082	0.535	26.443682	-105.494346
Lim. Edos. Term. Dgo. Ppia. Chih.	122.89																			
Matamoros	148.00	1	0	1186	0.3	67.1	4.5	16.3	2.5	5.4	3.1	0.2	0.6	67.4	4.5	28.1	0.084	0.505	26.751051	-105.581085
Hidalgo del Parral	171.00	1	0	2884	0.8	75.9	2.6	14.6	1.7	3.1	1.0	0.0	0.3	76.7	2.6	20.7	0.103	0.506	26.917868	-105.640653

8 CARR: Ent. Los Herrera - Topia

CLAVE: 10090

RUTA: MEX-036

AÑO: 2013

LUGAR	ESTACION				CLASIFICACION VEHICULAR EN PORCIENTO													COORDENADAS		
	KM	TE	SC	TDPA	M	A	B	C2	C3	T3S2	T3S3	T3S2R4	OTROS	A	B	C	K'	D	LATITUD	LONGITUD
T. C. Guadalupe Aguilera - Tepehuanes	0.00	3	0	611	0.3	60.0	5.1	16.8	3.7	7.6	5.2	0.1	1.2	60.3	5.1	34.6	0.100	0.532	25.121515	-105.482201
Los Altares	80.00	1	0	550	0.1	48.5	8.2	20.7	7.4	8.6	6.3	0.2	0.0	48.6	8.2	43.2	0.084	0.505	25.017484	-105.897013
Topia	229.00																			

9 CARR: Gómez Palacio - Jiménez

CLAVE: 00006

RUTA: MEX-049

AÑO: 2013

LUGAR	ESTACION				CLASIFICACION VEHICULAR EN PORCIENTO													COORDENADAS		
	KM	TE	SC	TDPA	M	A	B	C2	C3	T3S2	T3S3	T3S2R4	OTROS	A	B	C	K'	D	LATITUD	LONGITUD
Gómez Palacio	0.00	3	1	13314	2.0	72.5	3.3	9.4	2.6	6.4	1.7	1.8	0.3	74.5	3.3	22.2	0.085	0.503	25.599896	-103.507155
Gómez Palacio	0.00	3	2	13138	2.6	69.5	3.6	10.2	2.8	7.2	1.9	1.9	0.3	72.1	3.6	24.3	0.076	0.503	25.599898	-103.507148
X. C. La Torreña - Brittingham	10.96	1	1	9014	2.4	68.7	3.6	7.4	2.8	9.2	2.9	1.9	1.1	71.1	3.6	25.3	0.095	0.503	25.639417	-103.523666
X. C. La Torreña - Brittingham	10.96	1	2	8923	3.3	65.8	3.8	7.6	3.2	9.9	3.0	2.2	1.2	69.1	3.8	27.1	0.079	0.503	25.639423	-103.523669

DURANGO

9 CARR: Gómez Palacio - Jiménez

CLAVE: 00006

RUTA: MEX-049

AÑO: 2013

LUGAR	ESTACION				CLASIFICACION VEHICULAR EN PORCIENTO													COORDENADAS		
	KM	TE	SC	TDPA	M	A	B	C2	C3	T3S2	T3S3	T3S2R4	OTROS	A	B	C	K'	D	LATITUD	LONGITUD
T. Izq. Dinamita	26.27	1	1	5351	1.5	60.7	4.2	8.4	3.2	14.3	3.2	3.4	1.1	62.2	4.2	33.6	0.083	0.502	25.756076	-103.570015
T. Izq. Dinamita	26.27	1	2	5348	1.3	56.1	4.3	10.0	3.8	15.9	3.7	3.6	1.3	57.4	4.3	38.3	0.077	0.502	25.756076	-103.570014
Bermejillo	39.30	1	0	7316	1.3	56.7	3.7	9.4	4.2	16.3	3.7	2.8	1.9	58.0	3.7	38.3	0.062	0.504	25.874281	-103.616573
T. Izq. Ent. La Zarca	40.89	3	0	3816	0.8	42.8	4.8	9.5	4.5	26.0	6.3	3.8	1.5	43.6	4.8	51.6	0.062	0.527	25.905007	-103.629000
Yermo	107.95	1	0	2579	0.9	37.3	6.4	5.9	5.6	31.1	8.0	3.6	1.2	38.2	6.4	55.4	0.064	0.510	26.384704	-103.999874
Yermo	107.95	3	0	2795	0.7	43.3	4.5	5.7	4.6	28.3	7.6	4.1	1.2	44.0	4.5	51.5	0.054	0.510	26.403123	-104.017158
Ceballos	127.20	1	0	2671	1.2	38.2	6.7	7.3	4.5	27.8	8.3	4.6	1.4	39.4	6.7	53.9	0.054	0.501	26.518608	-104.122233
Ceballos	127.20	3	0	2446	0.8	39.2	6.6	6.4	4.0	29.0	7.8	5.1	1.1	40.0	6.6	53.4	0.074	0.505	26.536836	-104.139054
Lim. Edos. Term. Dgo. Ppia. Chih.	146.15																			
Estación Escalón	160.89	3	0	2263	0.8	36.9	6.0	6.8	5.1	29.6	9.2	4.3	1.3	37.7	6.0	56.3	0.058	0.506	26.754395	-104.339645
Jiménez	223.00	1	1	1174	0.4	40.0	6.5	7.0	4.1	29.8	7.9	3.4	0.9	40.4	6.5	53.1	0.066	0.502	27.096598	-104.860735
Jiménez	223.00	1	2	1163	0.6	33.9	6.7	7.8	4.4	33.2	8.6	3.9	0.9	34.5	6.7	58.8	0.060	0.502	27.096598	-104.860735

10 CARR: Gómez Palacio - La Unión

CLAVE: 10009

RUTA: MEX-040

AÑO: 2013

LUGAR	ESTACION				CLASIFICACION VEHICULAR EN PORCIENTO													COORDENADAS		
	KM	TE	SC	TDPA	M	A	B	C2	C3	T3S2	T3S3	T3S2R4	OTROS	A	B	C	K'	D	LATITUD	LONGITUD
Gómez Palacio	0.00	3	0	6726	4.1	73.8	4.4	7.6	3.0	4.0	1.1	1.2	0.8	77.9	4.4	17.7	0.079	0.531	25.531589	-103.495649
X. C. Torreón - Villa Juárez	4.30	3	0	5210	4.7	76.4	3.0	8.0	2.3	3.4	0.9	0.4	0.9	81.1	3.0	15.9	0.075	0.509	25.517401	-103.487192
Nazareno	20.90	1	0	2159	4.6	75.9	5.1	8.7	2.2	2.2	0.8	0.2	0.3	80.5	5.1	14.4	0.080	0.522	25.405477	-103.423830
Nazareno	20.90	3	0	1930	5.3	70.5	5.5	9.2	2.7	3.6	1.0	1.2	1.0	75.8	5.5	18.7	0.080	0.501	25.395433	-103.434826
La Unión	42.20	1	0	540	5.6	72.7	3.0	9.3	4.8	2.6	1.1	0.8	0.1	78.3	3.0	18.7	0.094	0.506	25.295069	-103.508202

11 CARR: Gómez Palacio - Tlahualillo

CLAVE: 10005

RUTA: MEX-040

AÑO: 2013

LUGAR	ESTACION				CLASIFICACION VEHICULAR EN PORCIENTO													COORDENADAS		
	KM	TE	SC	TDPA	M	A	B	C2	C3	T3S2	T3S3	T3S2R4	OTROS	A	B	C	K'	D	LATITUD	LONGITUD
T. C. Gómez Palacio - Jiménez	0.00																			
T. Izq. Esmeralda	5.60	1	0	11094	4.0	74.9	2.5	7.5	3.0	4.2	1.7	1.1	1.1	78.9	2.5	18.6	0.081	0.507	25.610779	-103.461686
T. Izq. Esmeralda	5.60	3	0	8545	4.0	75.5	1.5	9.1	2.4	4.3	1.2	1.0	1.0	79.5	1.5	19.0	0.087	0.516	25.613631	-103.458016
Gregorio García	26.00	3	0	4803	3.5	74.9	1.1	11.1	2.9	3.9	0.9	1.2	0.5	78.4	1.1	20.5	0.080	0.500	25.752114	-103.349563
T. Izq. Esmeralda	31.44	1	0	6242	3.8	79.8	0.5	7.2	1.5	3.9	1.2	1.1	1.0	83.6	0.5	15.9	0.082	0.530	25.757971	-103.352827
San Francisco	48.90	1	0	2283	3.7	71.5	1.8	9.9	8.1	2.1	1.3	0.7	0.9	75.2	1.8	23.0	0.083	0.508	25.931831	-103.417674
San Francisco	48.90	3	0	1712	4.7	70.1	0.9	8.8	9.0	2.8	1.5	1.4	0.8	74.8	0.9	24.3	0.085	0.504	25.943768	-103.420864
Tlahualillo	72.90	1	0	2342	3.2	79.9	0.6	9.9	2.7	1.9	0.7	0.4	0.7	83.1	0.6	16.3	0.080	0.557	26.109662	-103.423667

DURANGO

12 CARR: Gregorio García - Francisco I. Madero

CLAVE: 00110

RUTA: MEX-040

AÑO: 2013

LUGAR	ESTACION				CLASIFICACION VEHICULAR EN PORCIENTO														COORDENADAS		
	KM	TE	SC	TDPA	M	A	B	C2	C3	T3S2	T3S3	T3S2R4	OTROS	A	B	C	K'	D	LATITUD	LONGITUD	
T. C. Gómez Palacio - Tlahualillo	0.00																				
Lim. Edos. Term. Dgo. Ppia. Coah.	3.60																				
Francisco I. Madero	9.60	1	0	5908	4.3	82.3	0.9	6.8	1.8	2.0	0.8	0.7	0.4	86.6	0.9	12.5	0.083	0.503	25.772665	-103.289191	

13 CARR: Guadalupe Aguilera - Tepehuanes

CLAVE: 10220

RUTA: MEX-023

AÑO: 2013

LUGAR	ESTACION				CLASIFICACION VEHICULAR EN PORCIENTO														COORDENADAS	
	KM	TE	SC	TDPA	M	A	B	C2	C3	T3S2	T3S3	T3S2R4	OTROS	A	B	C	K'	D	LATITUD	LONGITUD
Guadalupe Aguilera	0.00	3	1	2434	0.9	82.5	2.7	9.6	1.4	1.5	1.1	0.1	0.2	83.4	2.7	13.9	0.088	0.507	24.442562	-104.702489
Guadalupe Aguilera	0.00	3	2	2504	1.0	80.6	2.9	10.9	1.4	1.6	1.3	0.1	0.2	81.6	2.9	15.5	0.102	0.507	24.441364	-104.702214
Canatlán	14.00	3	0	2879	1.0	74.8	3.1	11.3	2.1	4.1	2.4	0.5	0.7	75.8	3.1	21.1	0.075	0.514	24.538360	-104.776631
La Soledad	45.80	3	0	2601	1.0	73.9	3.5	12.2	2.2	3.5	2.7	0.4	0.6	74.9	3.5	21.6	0.079	0.501	24.773006	-104.933139
T. Der. Coneto de Comonfort	51.60	1	0	2630	0.7	74.9	2.4	12.0	2.4	3.7	2.7	0.6	0.6	75.6	2.4	22.0	0.078	0.504	24.803349	-104.924367
José María Morelos	90.20	1	0	2270	0.8	76.0	3.0	11.1	2.6	3.3	2.6	0.3	0.3	76.8	3.0	20.2	0.081	0.502	25.008678	-105.204186
Santiago Papasquiaro	117.00	3	0	3810	0.8	72.5	3.4	14.7	3.1	3.1	1.6	0.2	0.6	73.3	3.4	23.3	0.073	0.503	25.078093	-105.431202
Las Herreras	133.00	3	0	994	0.8	76.3	3.9	10.7	4.1	3.0	1.2	0.0	0.0	77.1	3.9	19.0	0.085	0.507	25.159820	-105.510979
Tepehuanes	169.00	1	0	1196	0.8	74.7	3.6	13.3	3.3	2.6	1.3	0.2	0.2	75.5	3.6	20.9	0.085	0.503	25.322486	-105.714491

14 CARR: Hidalgo del Parral - Guadalupe y Calvo

CLAVE: 00802

RUTA: MEX-024

AÑO: 2013

LUGAR	ESTACION				CLASIFICACION VEHICULAR EN PORCIENTO														COORDENADAS	
	KM	TE	SC	TDPA	M	A	B	C2	C3	T3S2	T3S3	T3S2R4	OTROS	A	B	C	K'	D	LATITUD	LONGITUD
T. C. Hidalgo del Parral - Santa Bárbara	0.00	3	0	3101	0.5	71.3	1.7	13.3	5.3	4.4	2.0	0.3	1.2	71.8	1.7	26.5	0.107	0.510	26.915633	-105.764650
T. Der. Guacho chic	35.00	1	0	884	0.7	62.3	3.0	14.6	5.9	5.6	5.2	2.1	0.6	63.0	3.0	34.0	0.093	0.515	26.826957	-106.010964
T. Der. Guacho chic	35.00	3	0	805	0.5	69.1	2.4	13.2	5.5	5.2	3.6	0.1	0.4	69.6	2.4	28.0	0.092	0.506	26.811088	-106.015632
Lim. Edos. Term. Chih. Ppia. Dgo	38.00																			
Lim. Edos. Term. Dgo. Ppia. Chih.	57.00																			
El Vergel	110.00	1	0	1299	0.9	63.3	2.8	12.5	7.0	6.2	5.2	1.5	0.6	64.2	2.8	33.0	0.092	0.507	26.526706	-106.353846
Puerto Sabinal	212.00	1	0	732	0.6	66.3	2.0	14.5	8.3	4.6	2.2	0.3	1.2	66.9	2.0	31.1	0.092	0.541	26.068714	-106.779088
Guadalupe y Calvo	234.00																			

DURANGO

15 CARR: Libramiento Cuencamé

CLAVE: 10006

RUTA: MEX

AÑO: 2013

LUGAR	ESTACION				CLASIFICACION VEHICULAR EN PORCIENTO														COORDENADAS	
	KM	TE	SC	TDPA	M	A	B	C2	C3	T3S2	T3S3	T3S2R4	OTROS	A	B	C	K'	D	LATITUD	LONGITUD
T. C. La Chicharrona - Cuencamé	0.00	3	1	948	1.5	77.0	2.8	10.4	2.6	3.0	2.1	0.5	0.1	78.5	2.8	18.7	0.075	0.523	24.863699	-103.699824
T. C. La Chicharrona - Cuencamé	0.00	3	2	1039	2.2	74.7	3.3	10.8	3.0	3.2	2.2	0.5	0.1	76.9	3.3	19.8	0.074	0.523	24.863699	-103.699824
T. C. Durango - Torreón	2.60	1	1	633	2.3	73.8	3.6	9.6	2.9	4.4	1.8	1.3	0.3	76.1	3.6	20.3	0.093	0.527	24.880413	-103.700914
T. C. Durango - Torreón	2.60	1	2	708	1.8	72.8	4.0	9.8	3.5	4.4	2.1	1.1	0.5	74.6	4.0	21.4	0.081	0.527	24.880415	-103.700920

16 CARR: Pedriceña - Ent. Rodeo

CLAVE: 10002

RUTA: MEX-034

AÑO: 2013

LUGAR	ESTACION				CLASIFICACION VEHICULAR EN PORCIENTO														COORDENADAS	
	KM	TE	SC	TDPA	M	A	B	C2	C3	T3S2	T3S3	T3S2R4	OTROS	A	B	C	K'	D	LATITUD	LONGITUD
T. C. Cuencamé - Torreón	0.00	3	0	2354	1.1	73.3	0.6	18.1	2.0	2.2	1.1	0.5	1.1	74.4	0.6	25.0	0.082	0.504	25.091289	-103.772963
Nazas	45.00	1	0	1988	2.9	76.8	0.5	16.2	1.3	1.6	0.5	0.1	0.1	79.7	0.5	19.8	0.088	0.501	25.235095	-104.100705
Nazas	45.00	3	0	916	2.7	75.8	0.9	16.8	2.0	0.7	0.9	0.1	0.1	78.5	0.9	20.6	0.082	0.502	25.217183	-104.126384
T. C. (Durango - Ent. La Zarca)-Ent. Rodeo	98.00	1	0	923	1.0	77.0	1.0	16.1	1.9	1.9	1.1	0.0	0.0	78.0	1.0	21.0	0.082	0.501	25.129232	-104.537335

17 CARR: Ramal a Otinapa

CLAVE: 10002

RUTA: MEX

AÑO: 2013

LUGAR	ESTACION				CLASIFICACION VEHICULAR EN PORCIENTO														COORDENADAS		
	KM	TE	SC	TDPA	M	A	B	C2	C3	T3S2	T3S3	T3S2R4	OTROS	A	B	C	K'	D	LATITUD	LONGITUD	
T. C. Durango - Villa Unión	0.00	3	0	209	1.5	67.8	3.5	12.9	7.0	3.7	3.4	0.1	0.1	69.3	3.5	27.2	0.144	0.544	23.925886	-104.940495	
Otinapa	19.65																				

18 CARR: Ramal a Santa Clara

CLAVE: 10287

RUTA: MEX-049

AÑO: 2013

LUGAR	ESTACION				CLASIFICACION VEHICULAR EN PORCIENTO														COORDENADAS		
	KM	TE	SC	TDPA	M	A	B	C2	C3	T3S2	T3S3	T3S2R4	OTROS	A	B	C	K'	D	LATITUD	LONGITUD	
T. C. Ent. La Chicharrona - Cuencamé	0.00	3	0	707	0.5	74.5	2.1	20.6	1.1	0.9	0.3	0.0	0.0	75.0	2.1	22.9	0.093	0.500	24.440430	-103.486244	
Santa Clara	14.00																				

19 CARR: Ramal a Villa Juárez

CLAVE: 10287

RUTA: MEX-040

AÑO: 2013

LUGAR	ESTACION				CLASIFICACION VEHICULAR EN PORCIENTO														COORDENADAS		
	KM	TE	SC	TDPA	M	A	B	C2	C3	T3S2	T3S3	T3S2R4	OTROS	A	B	C	K'	D	LATITUD	LONGITUD	
T. C. Gómez Palacio - La Unión	0.00	3	1	1822	10.4	79.9	1.5	4.7	0.9	1.4	0.4	0.1	0.7	90.3	1.5	8.2	0.077	0.503	25.517520	-103.494839	
T. C. Gómez Palacio - La Unión	0.00	3	2	1849	10.2	79.2	1.7	5.2	1.0	1.4	0.4	0.1	0.8	89.4	1.7	8.9	0.085	0.503	25.517521	-103.494841	
Villa Juárez	13.00																				

DURANGO

20 CARR: Zacatecas - Durango

CLAVE: 00544

RTA: MEX-045

AÑO: 2013

LUGAR	ESTACION				CLASIFICACION VEHICULAR EN PORCIENTO														COORDENADAS	
	KM	TE	SC	TDPA	M	A	B	C2	C3	T3S2	T3S3	T3S2R4	OTROS	A	B	C	K'	D	LATITUD	LONGITUD
Zacatecas	0.00																			
T. Izq. Guadalajara	6.40	3	1	11967	0.3	82.4	2.7	6.4	1.5	3.3	1.4	1.1	0.9	82.7	2.7	14.6	0.079	0.501	22.782519	-102.627177
T. Izq. Guadalajara	6.40	3	2	12032	0.4	80.4	2.9	7.1	1.6	3.7	1.6	1.3	1.0	80.8	2.9	16.3	0.086	0.501	22.782580	-102.627262
T. Der. Saltillo (T. Morelos)	15.00	3	1	10564	0.8	73.8	4.9	6.9	2.1	5.3	2.4	3.1	0.7	74.6	4.9	20.5	0.090	0.504	22.860537	-102.647862
T. Der. Saltillo (T. Morelos)	15.00	3	2	10729	0.6	70.7	5.5	7.8	2.4	5.8	2.8	3.7	0.7	71.3	5.5	23.2	0.084	0.504	22.867932	-102.630372
Victor Rosales	28.00	1	1	10436	1.6	77.2	2.5	6.0	2.0	4.8	2.6	2.6	0.7	78.8	2.5	18.7	0.077	0.503	22.930115	-102.685513
Victor Rosales	28.00	1	2	10313	1.3	75.4	3.0	6.4	2.4	5.2	2.7	2.9	0.7	76.7	3.0	20.3	0.073	0.503	22.930009	-102.685890
T. Der. Facultad de Veterinaria	32.30	1	1	6287	0.6	70.6	4.0	7.8	2.8	7.7	2.5	3.2	0.8	71.2	4.0	24.8	0.072	0.503	22.971916	-102.719839
T. Der. Facultad de Veterinaria	32.30	1	2	6218	0.5	66.6	4.8	8.5	3.3	8.9	2.7	3.8	0.9	67.1	4.8	28.1	0.075	0.503	22.971753	-102.719909
Gral. Enrique Estrada	34.60	3	1	8849	1.3	72.7	4.6	6.9	1.8	6.8	2.8	2.2	0.9	74.0	4.6	21.4	0.072	0.508	23.012383	-102.751792
Gral. Enrique Estrada	34.60	3	2	8564	0.6	70.1	5.1	7.7	2.1	7.9	2.9	2.6	1.0	70.7	5.1	24.2	0.071	0.508	23.012382	-102.751920
Fresnillo	58.50	1	1	7313	1.4	75.9	4.1	8.7	1.9	4.2	1.6	1.8	0.4	77.3	4.1	18.6	0.079	0.502	23.162892	-102.853694
Fresnillo	58.50	1	2	7250	1.1	73.5	4.8	10.0	1.9	4.7	1.7	1.9	0.4	74.6	4.8	20.6	0.079	0.502	23.159642	-102.852093
Ent. La Chicharrona	74.30	1	1	7002	1.5	62.9	6.2	11.7	2.8	8.0	3.2	2.8	0.9	64.4	6.2	29.4	0.080	0.512	23.287760	-102.950944
Ent. La Chicharrona	74.30	1	2	7352	1.8	58.3	7.0	13.1	3.1	9.0	3.7	3.0	1.0	60.1	7.0	32.9	0.075	0.512	23.287701	-102.951053
Ent. La Chicharrona	74.30	3	0	5297	0.4	70.7	3.5	11.6	3.9	4.6	3.5	1.1	0.7	71.1	3.5	25.4	0.077	0.504	23.310599	-102.966583
T. Der. Sain Alto	121.00	3	0	3435	0.5	68.5	4.9	11.9	3.4	4.8	4.1	1.3	0.6	69.0	4.9	26.1	0.086	0.509	23.581703	-103.274230
T. Izq. Sombrerete (2º Acceso)	161.50	3	0	4782	0.7	69.9	5.6	11.5	3.4	4.9	2.6	0.9	0.5	70.6	5.6	23.8	0.098	0.502	23.644895	-103.648751
Lim. Edos. Term. Zac. Ppia. Dgo.	190.08																			
X. C. Sùchil - Villa Unión	206.98	1	0	2651	1.1	62.1	7.4	15.2	3.0	5.6	3.6	1.6	0.4	63.2	7.4	29.4	0.081	0.503	23.750597	-103.961521
X. C. Sùchil - Villa Unión	206.98	3	0	4877	1.4	70.6	4.8	14.0	1.4	4.5	2.1	0.7	0.5	72.0	4.8	23.2	0.092	0.504	23.744406	-104.000093
T. Izq. Graceros	210.00	1	0	4343	1.1	73.0	4.8	11.0	2.0	4.5	2.2	0.9	0.5	74.1	4.8	21.1	0.084	0.501	23.748106	-104.038094
Amado Nervo	231.51	1	0	3634	0.7	68.2	6.0	11.9	3.4	5.6	2.7	1.0	0.5	68.9	6.0	25.1	0.083	0.500	23.841908	-104.186577
Amado Nervo	231.51	3	0	5000	0.9	73.7	4.6	11.1	1.9	4.4	2.2	0.7	0.5	74.6	4.6	20.8	0.083	0.509	23.844136	-104.194726
Nombre de Dios	236.80	1	0	4514	1.7	74.8	3.7	14.2	1.2	2.7	0.7	0.6	0.4	76.5	3.7	19.8	0.081	0.504	23.843368	-104.231633
Nombre de Dios	236.80	3	0	4948	1.4	79.6	2.1	11.4	1.2	2.6	0.8	0.6	0.3	81.0	2.1	16.9	0.086	0.504	23.851490	-104.248992
T. Der. Constançia	240.60	3	0	4833	0.4	72.3	4.9	11.0	2.5	4.8	2.6	0.9	0.6	72.7	4.9	22.4	0.073	0.511	23.872410	-104.270457
T. Der. Tuitán	250.80	3	0	4935	0.4	74.0	4.4	10.0	2.4	4.8	2.6	1.0	0.4	74.4	4.4	21.2	0.074	0.501	23.922757	-104.337320
T. Der. Independencia y Libertad	261.70	1	0	5166	0.7	73.4	4.4	11.1	2.0	4.6	2.5	0.8	0.5	74.1	4.4	21.5	0.076	0.502	23.994121	-104.374516
T. Der. Independencia y Libertad	261.70	3	1	2518	0.5	75.4	3.2	11.7	2.8	3.7	1.9	0.5	0.3	75.9	3.2	20.9	0.095	0.500	24.006182	-104.384702
T. Der. Independencia y Libertad	261.70	3	2	2508	0.4	72.6	3.6	12.9	3.4	4.0	2.3	0.5	0.3	73.0	3.6	23.4	0.090	0.500	24.006175	-104.384701
T. Izq. Parras de La Fuente	276.60	1	1	3977	1.3	75.4	3.9	11.1	2.2	3.1	1.8	0.8	0.4	76.7	3.9	19.4	0.089	0.514	24.018962	-104.505778
T. Izq. Parras de La Fuente	276.60	1	2	3762	1.1	73.3	4.4	12.0	2.4	3.5	2.0	0.9	0.4	74.4	4.4	21.2	0.082	0.514	24.018962	-104.505778
T. Izq. Parras de La Fuente	276.60	3	1	3477	1.3	78.5	2.9	12.7	1.8	1.9	0.6	0.1	0.2	79.8	2.9	17.3	0.100	0.501	24.023756	-104.549158
T. Izq. Parras de La Fuente	276.60	3	2	3462	1.6	76.8	3.1	13.5	2.0	2.1	0.6	0.1	0.2	78.4	3.1	18.5	0.100	0.501	24.023756	-104.549158

DURANGO

20 CARR: Zacatecas - Durango

CLAVE: 00544

RUTA: MEX-045

AÑO: 2013

LUGAR	ESTACION				CLASIFICACION VEHICULAR EN PORCIENTO													COORDENADAS		
	KM	TE	SC	TDPA	M	A	B	C2	C3	T3S2	T3S3	T3S2R4	OTROS	A	B	C	K'	D	LATITUD	LONGITUD
Durango	287.30	1	1	6677	1.6	82.0	1.8	10.6	1.3	1.4	0.8	0.1	0.4	83.6	1.8	14.6	0.086	0.511	24.027576	-104.587556
Durango	287.30	1	2	6969	2.6	79.1	1.8	12.2	1.4	1.6	0.8	0.1	0.4	81.7	1.8	16.5	0.082	0.511	24.027590	-104.587561

21 CARR: Durango - Mazatlán (Cuota)

CLAVE: 00084

RUTA: MEX-040D

AÑO: 2013

LUGAR	ESTACION				CLASIFICACION VEHICULAR EN PORCIENTO													COORDENADAS		
	KM	TE	SC	TDPA	M	A	B	C2	C3	T3S2	T3S3	T3S2R4	OTROS	A	B	C	K'	D	LATITUD	LONGITUD
Libramiento de Durango	21.30	3	0	2022	0.8	69.1	3.9	11.8	2.7	8.1	2.2	1.1	0.3	69.9	3.9	26.2	0.097	0.501	24.003275	-104.740690
Caseta de Cobro Durango	22.20	2	0	1635	1.0	77.2	4.4	3.3	3.3	8.6	1.5	0.5	0.2	78.2	4.4	17.4	0.108	0.500	24.006442	-104.730541
Ent. Olinapa	44.50	1	0	1936	0.8	67.1	4.0	13.7	2.9	7.9	2.2	1.1	0.3	67.9	4.0	28.1	0.093	0.504	23.982114	-104.945902
Caseta de Cobro Llano Grande	78.10	2	0	2080	0.9	79.5	3.7	3.3	3.2	7.4	1.4	0.4	0.2	80.4	3.7	15.9	0.108	0.500	23.868855	-105.205733
Lim. Edos. Term. Dgo. Ppia. Sin.	157.40																			
Concordia	213.60	3	0	1031	0.9	79.7	1.1	8.1	3.0	4.7	1.9	0.2	0.4	80.6	1.1	18.3	0.115	0.596	23.255053	-106.053739
Villa Unión	229.70	1	0	875	1.3	77.9	0.9	8.2	3.4	5.4	2.3	0.3	0.3	79.2	0.9	19.9	0.118	0.596	23.198472	-106.169973

22 CARR: Durango - Yerbanis (Cuota)

CLAVE: 10003

RUTA: MEX-040D

AÑO: 2013

LUGAR	ESTACION				CLASIFICACION VEHICULAR EN PORCIENTO													COORDENADAS		
	KM	TE	SC	TDPA	M	A	B	C2	C3	T3S2	T3S3	T3S2R4	OTROS	A	B	C	K'	D	LATITUD	LONGITUD
T. C. Durango - Torreón	0.00																			
T. Der. Aeropuerto	5.31	1	1	2476	1.0	77.8	3.9	9.1	2.5	3.5	1.0	0.8	0.4	78.8	3.9	17.3	0.108	0.502	24.123864	-104.540855
T. Der. Aeropuerto	5.31	1	2	2457	1.2	75.5	4.3	10.0	2.6	3.9	1.1	0.9	0.5	76.7	4.3	19.0	0.105	0.502	24.123864	-104.540855
Caseta de Cobro Durango	5.50	2	1	892	0.5	68.9	9.8	4.2	3.0	9.4	1.4	2.3	0.5	69.4	9.8	20.8	0.117	0.500	24.131744	-104.534063
Caseta de Cobro Durango	5.50	2	2	892	0.5	68.9	9.8	4.2	3.0	9.4	1.4	2.3	0.5	69.4	9.8	20.8	0.117	0.500	24.131744	-104.534063
Caseta de Cobro Yerbanis	112.19	2	1	709	0.6	65.4	10.9	4.7	3.1	10.5	1.4	2.8	0.6	66.0	10.9	23.1	0.117	0.500	24.730279	-103.862552
Caseta de Cobro Yerbanis	112.19	2	2	709	0.6	65.4	10.9	4.7	3.1	10.5	1.4	2.8	0.6	66.0	10.9	23.1	0.117	0.500	24.730279	-103.862552
Ent. Yerbanis	118.00																			

23 CARR: Gómez Palacio - Corralitos (Cuota)

CLAVE: 00016

RUTA: MEX-049D

AÑO: 2013

LUGAR	ESTACION				CLASIFICACION VEHICULAR EN PORCIENTO													COORDENADAS		
	KM	TE	SC	TDPA	M	A	B	C2	C3	T3S2	T3S3	T3S2R4	OTROS	A	B	C	K'	D	LATITUD	LONGITUD
T. C. Gómez Palacio - Jiménez (Libre)	0.00																			
T. Izq. Bermejillo	2.21	1	1	1648	1.8	45.5	10.2	6.6	3.1	19.4	4.9	7.2	1.3	47.3	10.2	42.5	0.059	0.507	25.880555	-103.611510
T. Izq. Bermejillo	2.21	1	2	1695	1.1	41.6	10.5	7.7	3.3	21.1	5.1	8.0	1.6	42.7	10.5	46.8	0.061	0.507	25.880556	-103.611511

DURANGO

23 CARR: Gómez Palacio - Corralitos (Cuota)

CLAVE: 00016

RUTA: MEX-049D

AÑO: 2013

LUGAR	ESTACION				CLASIFICACION VEHICULAR EN PORCIENTO										COORDENADAS					
	KM	TE	SC	TDPA	M	A	B	C2	C3	T3S2	T3S3	T3S2R4	OTROS	A	B	C	K'	D	LATITUD	LONGITUD
T. Izq. Bermejillo	2.21	3	1	1600	1.0	42.3	8.2	7.7	2.7	23.5	5.0	8.3	1.3	43.3	8.2	48.5	0.064	0.501	25.897499	-103.612137
T. Izq. Bermejillo	2.21	3	2	1629	0.6	38.3	8.2	7.9	2.9	25.3	5.6	9.8	1.4	38.9	8.2	52.9	0.068	0.501	25.897498	-103.612136
Caseta de Cobro Bermejillo	5.00	2	1	1371	0.1	38.3	15.5	2.3	1.5	25.2	4.7	10.6	1.8	38.4	15.5	46.1	0.079	0.500	25.923654	-103.622041
Caseta de Cobro Bermejillo	5.00	2	2	1371	0.1	38.3	15.5	2.3	1.5	25.2	4.7	10.6	1.8	38.4	15.5	46.1	0.079	0.500	25.923654	-103.622041
Caseta de Cobro Ceballos	89.00	2	1	1348	0.1	37.6	14.9	2.6	1.9	25.5	4.8	10.8	1.8	37.7	14.9	47.4	0.079	0.500	26.586790	-104.057602
Caseta de Cobro Ceballos	89.00	2	2	1348	0.1	37.6	14.9	2.6	1.9	25.5	4.8	10.8	1.8	37.7	14.9	47.4	0.079	0.500	26.586790	-104.057602
Lim. Edos. Term. Dgo. Ppia. Chih.	112.00																			
T. C. Libramiento Jiménez	150.59																			
T. C. Gómez Palacio - Jiménez (Libre)	194.00	1	1	1489	0.6	41.0	10.6	7.7	2.9	22.5	4.7	8.7	1.3	41.6	10.6	47.8	0.079	0.516	27.087404	-104.849244
T. C. Gómez Palacio - Jiménez (Libre)	194.00	1	2	1584	1.0	35.7	11.1	8.1	3.0	25.4	5.4	9.0	1.3	36.7	11.1	52.2	0.110	0.516	27.087409	-104.849230

24 CARR: Libramiento de Durango (Cuota)

CLAVE: 10006

RUTA: MEX-040D

AÑO: 2013

LUGAR	ESTACION				CLASIFICACION VEHICULAR EN PORCIENTO										COORDENADAS					
	KM	TE	SC	TDPA	M	A	B	C2	C3	T3S2	T3S3	T3S2R4	OTROS	A	B	C	K'	D	LATITUD	LONGITUD
T. C. Durango - Torreón	0.00	3	0	3121	1.1	58.7	2.6	9.0	7.6	13.8	5.2	1.2	0.8	59.8	2.6	37.6	0.083	0.506	24.092790	-104.586924
T. C. Durango - Villa Unión (Cuota)	21.60	1	0	1646	0.7	55.0	3.2	12.7	6.7	16.0	4.1	1.2	0.4	55.7	3.2	41.1	0.084	0.534	24.014848	-104.727106

25 CARR: Yerbanís - Gómez Palicio (Cuota)

CLAVE: 10003

RUTA: MEX-040D

AÑO: 2013

LUGAR	ESTACION				CLASIFICACION VEHICULAR EN PORCIENTO										COORDENADAS					
	KM	TE	SC	TDPA	M	A	B	C2	C3	T3S2	T3S3	T3S2R4	OTROS	A	B	C	K'	D	LATITUD	LONGITUD
Ent. Yerbanís	118.00																			
Caseta de Cobro Cuencamé	143.22	2	1	702	0.5	65.4	12.2	4.5	3.1	9.9	1.4	2.4	0.6	65.9	12.2	21.9	0.089	0.500	24.981673	-103.735239
Caseta de Cobro Cuencamé	143.22	2	2	702	0.5	65.4	12.2	4.5	3.1	9.9	1.4	2.4	0.6	65.9	12.2	21.9	0.089	0.500	24.981673	-103.735239
X. C. Cuencamé - Torreón	180.00	1	1	1693	0.6	52.9	11.5	8.1	3.3	10.7	4.0	8.1	0.8	53.5	11.5	35.0	0.099	0.523	25.128327	-103.752794
X. C. Cuencamé - Torreón	180.00	1	2	1859	0.7	48.0	12.9	9.1	3.5	11.4	4.6	8.8	1.0	48.7	12.9	38.4	0.077	0.523	25.128327	-103.752794
X. C. Cuencamé - Torreón	180.00	3	1	1918	1.7	51.7	12.7	8.6	2.9	10.0	3.5	7.2	1.7	53.4	12.7	33.9	0.088	0.510	25.145178	-103.754565
X. C. Cuencamé - Torreón	180.00	3	2	2011	1.1	43.5	14.6	9.5	3.4	12.1	4.5	8.3	3.0	44.6	14.6	40.8	0.077	0.510	25.145184	-103.754571
Caseta de Cobro León Guzmán	212.71	1	1	2038	0.3	62.2	10.2	4.9	2.4	9.9	3.3	6.0	0.8	62.5	10.2	27.3	0.098	0.505	25.516610	-103.639619
Caseta de Cobro León Guzmán	212.71	1	2	2069	0.5	58.2	10.9	5.4	2.6	11.1	3.7	6.6	1.0	58.7	10.9	30.4	0.073	0.505	25.516610	-103.639620
Caseta de Cobro León Guzmán	212.71	2	1	1043	0.3	41.3	18.2	4.8	4.5	18.8	4.1	7.0	1.0	41.6	18.2	40.2	0.089	0.500	25.520712	-103.639620
Caseta de Cobro León Guzmán	212.71	2	2	1043	0.3	41.3	18.2	4.8	4.5	18.8	4.1	7.0	1.0	41.6	18.2	40.2	0.089	0.500	25.520712	-103.639620
Caseta de Cobro León Guzmán	212.71	3	1	1588	0.6	49.9	10.5	6.1	3.1	18.8	3.9	6.0	1.1	50.5	10.5	39.0	0.084	0.506	25.524686	-103.639022
Caseta de Cobro León Guzmán	212.71	3	2	1625	0.5	45.0	11.9	6.8	3.7	20.2	4.2	6.5	1.2	45.5	11.9	42.6	0.070	0.506	25.524685	-103.639022

DURANGO

25 CARR: Yerbanis - Gómez Palicio (Cuota)

CLAVE: 10003

RUTA: MEX-040D

AÑO: 2013

LUGAR	ESTACION	CLASIFICACION VEHICULAR EN PORCIENTO												COORDENADAS								
		KM	TE	SC	TDPA	M	A	B	C2	C3	T3S2	T3S3	T3S2R4	OTROS	A	B	C	K'	D	LATITUD	LONGITUD	
T. C. Gómez Palacio - Jiménez	220.00																					

26 CARR: Amado Nervo - La Ochoa

CLAVE: 10012

RUTA: DGO-542

AÑO: 2013

LUGAR	ESTACION	CLASIFICACION VEHICULAR EN PORCIENTO												COORDENADAS						
		KM	TE	SC	TDPA	M	A	B	C2	C3	T3S2	T3S3	T3S2R4	OTROS	A	B	C	K'	D	LATITUD
Amado Nervo	0.00	3	0	1699	1.5	82.8	2.1	8.4	3.2	1.5	0.3	0.1	0.1	84.3	2.1	13.6	0.084	0.504	23.852603	-104.173966
Villa Unión	25.00	1	0	2910	2.2	84.6	2.4	6.9	1.5	1.8	0.3	0.0	0.3	86.8	2.4	10.8	0.081	0.521	23.962795	-104.050893
La Ochoa	42.00	1	0	334	3.7	77.2	4.1	14.4	0.1	0.5	0.0	0.0	0.0	80.9	4.1	15.0	0.108	0.506	24.019990	-103.926196

27 CARR: Ceballos - El Mirador

CLAVE: 10417

RUTA: DGO-044

AÑO: 2013

LUGAR	ESTACION	CLASIFICACION VEHICULAR EN PORCIENTO												COORDENADAS						
		KM	TE	SC	TDPA	M	A	B	C2	C3	T3S2	T3S3	T3S2R4	OTROS	A	B	C	K'	D	LATITUD
Ceballos	0.00	3	0	841	0.5	74.3	0.6	18.5	3.5	2.3	0.3	0.0	0.0	74.8	0.6	24.6	0.080	0.501	26.501327	-104.187108
T. C. Ent. La Zarca - Hidalgo del Parral	113.50	1	0	583	0.0	85.2	0.6	13.8	0.3	0.0	0.1	0.0	0.0	85.2	0.6	14.2	0.091	0.512	26.141560	-105.028834

28 CARR: Durango - Aserradero La Flor

CLAVE: 10422

RUTA: DGO-115

AÑO: 2013

LUGAR	ESTACION	CLASIFICACION VEHICULAR EN PORCIENTO												COORDENADAS							
		KM	TE	SC	TDPA	M	A	B	C2	C3	T3S2	T3S3	T3S2R4	OTROS	A	B	C	K'	D	LATITUD	LONGITUD
Durango	0.00	3	1	8203	1.0	92.9	0.1	4.1	0.3	0.6	0.8	0.1	0.1	93.9	0.1	6.0	0.089	0.509	23.987453	-104.664050	
Durango	0.00	3	2	8518	1.3	91.4	0.1	4.8	0.3	0.8	1.0	0.1	0.2	92.7	0.1	7.2	0.085	0.509	23.987453	-104.664050	
T. Der. Presa Guadalupe Victoria	4.00	3	1	4778	7.4	83.8	0.4	6.1	0.6	0.9	0.5	0.0	0.3	91.2	0.4	8.4	0.106	0.501	23.977947	-104.664458	
T. Der. Presa Guadalupe Victoria	4.00	3	2	4759	5.6	84.6	0.4	7.0	0.6	1.0	0.5	0.0	0.3	90.2	0.4	9.4	0.111	0.501	23.977946	-104.664458	
Periférico Sur de Durango	8.00	3	0	374	6.5	67.0	0.0	16.2	9.0	0.6	0.7	0.0	0.0	73.5	0.0	26.5	0.096	0.504	23.947708	-104.673776	
La Casita	39.00	1	0	112	0.5	92.7	0.4	1.7	2.1	2.4	0.1	0.0	0.1	93.2	0.4	6.4	0.134	0.522	23.779785	-104.764916	
Aserradero La Flor	72.00																				

29 CARR: Jabonoso - Esmeralda

CLAVE: 10004

RUTA: DGO-363

AÑO: 2013

LUGAR	ESTACION	CLASIFICACION VEHICULAR EN PORCIENTO												COORDENADAS						
		KM	TE	SC	TDPA	M	A	B	C2	C3	T3S2	T3S3	T3S2R4	OTROS	A	B	C	K'	D	LATITUD
Jabonoso	0.00	3	0	5020	7.3	67.6	1.0	8.4	4.1	5.8	2.4	1.8	1.6	74.9	1.0	24.1	0.068	0.502	25.632493	-103.457193
T. Izq. Chimal	10.00	3	0	4175	9.4	72.3	0.7	7.2	3.2	3.6	1.3	1.1	1.2	81.7	0.7	17.6	0.076	0.505	25.695812	-103.442795

DURANGO

29 CARR: Jabonoso - Esmeralda

CLAVE: 10004

RUTA: DGO-363

AÑO: 2013

LUGAR	ESTACION				CLASIFICACION VEHICULAR EN PORCIENTO														COORDENADAS	
	KM	TE	SC	TDPA	M	A	B	C2	C3	T3S2	T3S3	T3S2R4	OTROS	A	B	C	K'	D	LATITUD	LONGITUD
Esmeralda	16.30	1	0	2995	10.3	68.3	1.7	5.9	5.0	4.0	1.7	1.3	1.8	78.6	1.7	19.7	0.072	0.511	25.737375	-103.431876

30 CARR: La Torreña - Brittingham

CLAVE: 10010

RUTA: DGO-325

AÑO: 2013

LUGAR	ESTACION				CLASIFICACION VEHICULAR EN PORCIENTO														COORDENADAS	
	KM	TE	SC	TDPA	M	A	B	C2	C3	T3S2	T3S3	T3S2R4	OTROS	A	B	C	K'	D	LATITUD	LONGITUD
La Torreña	0.00	3	0	2767	8.3	67.7	2.0	6.5	5.1	4.9	2.2	1.9	1.4	76.0	2.0	22.0	0.072	0.504	25.638084	-103.581650
X. C. Gómez Palacio - Jiménez	7.00	1	0	3872	7.8	68.8	2.7	8.9	3.9	4.5	1.9	1.1	0.4	76.6	2.7	20.7	0.071	0.502	25.639028	-103.533745
X. C. Gómez Palacio - Jiménez	7.00	3	0	2741	8.0	69.7	3.0	7.8	3.3	5.1	1.6	1.0	0.5	77.7	3.0	19.3	0.081	0.507	25.641399	-103.520379
Chimal	16.00	1	0	2122	9.3	64.0	3.4	7.0	8.8	4.4	1.6	1.0	0.5	73.3	3.4	23.3	0.079	0.510	25.691046	-103.490530
Chimal	16.00	3	0	1303	10.3	64.5	2.6	6.9	8.5	4.8	1.5	0.7	0.2	74.8	2.6	22.6	0.091	0.518	25.695910	-103.489791
Brittingham	33.00	1	0	1489	6.1	74.0	1.2	6.2	4.5	4.3	1.9	1.4	0.4	80.1	1.2	18.7	0.122	0.578	25.775271	-103.571196

31 CARR: Libramiento de Torreón

CLAVE: 05516

RUTA: COA

AÑO: 2013

LUGAR	ESTACION				CLASIFICACION VEHICULAR EN PORCIENTO														COORDENADAS	
	KM	TE	SC	TDPA	M	A	B	C2	C3	T3S2	T3S3	T3S2R4	OTROS	A	B	C	K'	D	LATITUD	LONGITUD
Lim. Edos. Term. Coah. Ppia. Dgo.	11.80																			
X. C. Saltillo - Torreón	13.90	1	1	22414	3.6	76.5	1.5	6.7	2.8	3.7	2.1	1.6	1.5	80.1	1.5	18.4	0.064	0.507	25.530772	-103.365803
X. C. Saltillo - Torreón	13.90	1	2	23001	2.7	75.8	1.7	7.3	2.8	4.0	2.3	1.7	1.7	78.5	1.7	19.8	0.064	0.507	25.530722	-103.366063
X. C. Saltillo - Torreón	14.40	3	1	25516	1.9	83.3	1.9	3.2	1.1	3.3	3.2	1.3	0.8	85.2	1.9	12.9	0.080	0.509	25.540572	-103.370591
X. C. Saltillo - Torreón	14.40	3	2	26450	1.7	81.8	2.1	3.4	1.2	3.8	3.8	1.3	0.9	83.5	2.1	14.4	0.082	0.509	25.539763	-103.371029
T. C. La Cuchilla - Torreón (Alta)	21.70	1	1	6278	1.7	80.7	2.9	3.8	1.7	5.0	2.0	1.4	0.8	82.4	2.9	14.7	0.089	0.503	25.582526	-103.402790
T. C. La Cuchilla - Torreón (Baja)	21.70	1	1	10562	2.5	85.0	1.9	2.8	0.8	2.5	3.0	0.7	0.8	87.5	1.9	10.6	0.099	0.502	25.582647	-103.402688
T. C. La Cuchilla - Torreón (Alta)	21.70	1	2	6355	1.3	79.0	3.0	4.0	1.9	5.9	2.4	1.7	0.8	80.3	3.0	16.7	0.077	0.503	25.582455	-103.402843
T. C. La Cuchilla - Torreón (Baja)	21.70	1	2	10492	3.0	83.2	2.2	3.2	0.8	2.6	3.3	0.8	0.9	86.2	2.2	11.6	0.100	0.502	25.582231	-103.403001
T. C. Durango - Torreón	28.60																			

32 CARR: Libramiento Exterior Cuernamé

CLAVE: 10006

RUTA: DGO

AÑO: 2013

LUGAR	ESTACION				CLASIFICACION VEHICULAR EN PORCIENTO														COORDENADAS	
	KM	TE	SC	TDPA	M	A	B	C2	C3	T3S2	T3S3	T3S2R4	OTROS	A	B	C	K'	D	LATITUD	LONGITUD
Ent. La Chicharrona - Cuernamé	0.00	3	0	4599	1.0	42.5	8.1	6.3	3.5	22.3	5.8	9.2	1.3	43.5	8.1	48.4	0.062	0.537	24.843874	-103.695525
T. C. Durango - Torreón	8.40																			

DURANGO

33 CARR: Mezquital - San Miguel de Temoaya

CLAVE: 10006

RUTA: DGO

AÑO: 2013

LUGAR	ESTACION				CLASIFICACION VEHICULAR EN PORCIENTO										COORDENADAS					
	KM	TE	SC	TDPA	M	A	B	C2	C3	T3S2	T3S3	T3S2R4	OTROS	A	B	C	K'	D	LATITUD	LONGITUD
T. C. Durango - Mezquital	0.00	3	0	461	1.3	74.3	1.7	15.8	4.2	2.2	0.5	0.0	0.0	75.6	1.7	22.7	0.082	0.502	23.497115	-104.388442
San Miguel de Temoaya	48.00	1	0	324	0.0	81.9	2.0	9.2	4.4	1.9	0.6	0.0	0.0	81.9	2.0	16.1	0.086	0.502	23.304202	-104.507169

34 CARR: Ramal a San Juan del Río

CLAVE: 10001

RUTA: DGO-290

AÑO: 2013

LUGAR	ESTACION				CLASIFICACION VEHICULAR EN PORCIENTO										COORDENADAS					
	KM	TE	SC	TDPA	M	A	B	C2	C3	T3S2	T3S3	T3S2R4	OTROS	A	B	C	K'	D	LATITUD	LONGITUD
T. C. Durango - Ent. La Zarca	0.00	3	0	2352	1.0	81.0	3.8	9.0	1.1	2.0	0.8	0.8	0.5	82.0	3.8	14.2	0.093	0.505	24.797198	-104.498300
San Juan del Río	5.00	1	1	1527	0.7	83.5	3.1	11.3	0.7	0.4	0.2	0.0	0.1	84.2	3.1	12.7	0.113	0.504	24.785766	-104.473495
San Juan del Río	5.00	1	2	1548	0.8	80.5	3.6	13.5	0.8	0.5	0.2	0.0	0.1	81.3	3.6	15.1	0.113	0.504	24.785766	-104.473495

35 CARR: Súchil - Villa Unión

CLAVE: 10419

RUTA: DGO-241

AÑO: 2013

LUGAR	ESTACION				CLASIFICACION VEHICULAR EN PORCIENTO										COORDENADAS					
	KM	TE	SC	TDPA	M	A	B	C2	C3	T3S2	T3S3	T3S2R4	OTROS	A	B	C	K'	D	LATITUD	LONGITUD
Súchil	0.00	3	1	1033	2.7	86.0	2.1	7.6	0.8	0.4	0.3	0.1	0.0	88.7	2.1	9.2	0.112	0.500	23.629934	-103.924135
Súchil	0.00	3	2	1033	2.5	84.9	2.4	8.4	1.0	0.4	0.3	0.1	0.0	87.4	2.4	10.2	0.103	0.500	23.629920	-103.924119
Vicente Guerrero	13.40	1	0	1756	1.7	81.4	4.9	9.7	0.9	0.9	0.2	0.2	0.1	83.1	4.9	12.0	0.104	0.503	23.710890	-103.969890
X. C. Zacatecas - Durango	14.50	1	1	3965	3.1	83.4	2.3	8.8	0.5	1.1	0.5	0.0	0.3	86.5	2.3	11.2	0.098	0.508	23.741651	-103.984667
X. C. Zacatecas - Durango	14.50	1	2	4096	3.1	82.0	2.7	9.8	0.5	1.1	0.5	0.0	0.3	85.1	2.7	12.2	0.079	0.508	23.741641	-103.984669
X. C. Zacatecas - Durango	14.50	3	0	2215	2.4	82.7	2.3	10.1	0.7	1.4	0.2	0.1	0.1	85.1	2.3	12.6	0.092	0.502	23.746884	-103.987750
Villa Unión	41.40	1	0	1655	2.6	84.9	2.5	7.5	0.5	1.4	0.3	0.1	0.2	87.5	2.5	10.0	0.104	0.506	23.958882	-104.049500

36 CARR: Tlahualillo de Zaragoza - T.C. Gómez Palacio - Jiménez

CLAVE: 10419

RUTA: DGO

AÑO: 2013

LUGAR	ESTACION				CLASIFICACION VEHICULAR EN PORCIENTO										COORDENADAS					
	KM	TE	SC	TDPA	M	A	B	C2	C3	T3S2	T3S3	T3S2R4	OTROS	A	B	C	K'	D	LATITUD	LONGITUD
Tlahualillo de Zaragoza	0.00	3	0	926	6.4	76.7	1.3	8.3	3.2	3.0	0.7	0.2	0.2	83.1	1.3	15.6	0.092	0.524	26.120237	-103.449824
T. C. Gómez Palacio - Jiménez	37.00	1	0	720	6.0	72.3	1.7	9.2	3.5	5.6	0.9	0.3	0.7	78.2	1.7	20.2	0.099	0.530	26.155845	-103.776401

37 CARR: Yerbanís - Peñón Blanco

CLAVE: 10032

RUTA: DGO-316

AÑO: 2013

LUGAR	ESTACION				CLASIFICACION VEHICULAR EN PORCIENTO										COORDENADAS					
	KM	TE	SC	TDPA	M	A	B	C2	C3	T3S2	T3S3	T3S2R4	OTROS	A	B	C	K'	D	LATITUD	LONGITUD
Yerbanís	0.00	3	0	821	0.9	73.7	3.7	15.1	2.5	3.0	1.0	0.1	0.0	74.6	3.7	21.7	0.091	0.511	24.736545	-103.844091

DURANGO

37 CARR: Yerbanís - Peñón Blanco

CLAVE: 10032

RUTA: DGO-316

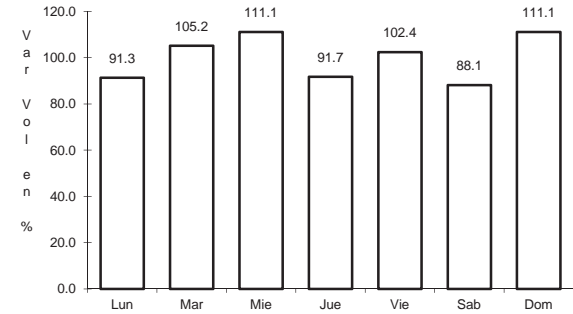
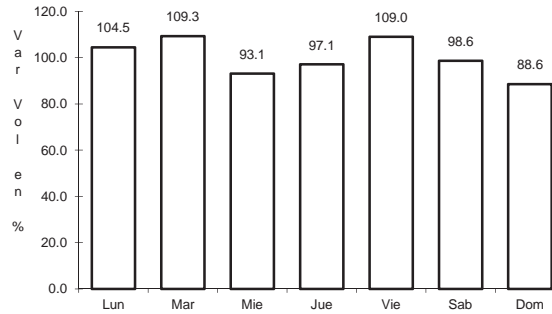
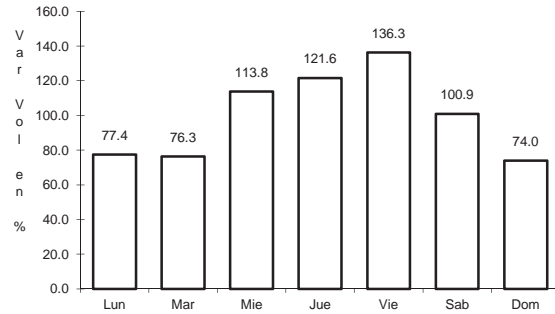
AÑO: 2013

L U G A R	E S T A C I O N				C L A S I F I C A C I O N V E H I C U L A R E N P O R C I E N T O														C O O R D E N A D A S	
	KM	TE	SC	TDPA	M	A	B	C2	C3	T3S2	T3S3	T3S2R4	OTROS	A	B	C	K'	D	LATITUD	LONGITUD
Peñón Blanco	22.00	1	0	965	1.3	77.6	2.1	15.3	2.6	1.0	0.1	0.0	0.0	78.9	2.1	19.0	0.080	0.506	24.785110	-104.016272

1 CARR: Bermejillo - El Palmito

CLAVE: 10105

RUTA: MEX-030



Km: 0.00 Tipo: 3 Sent: 0

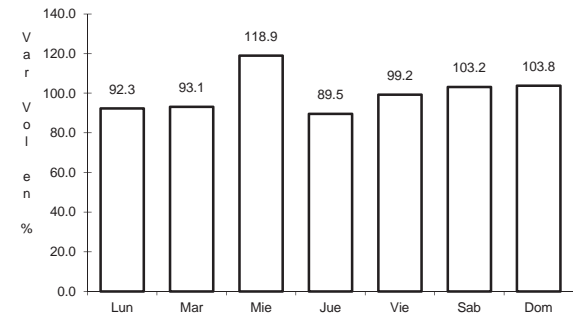
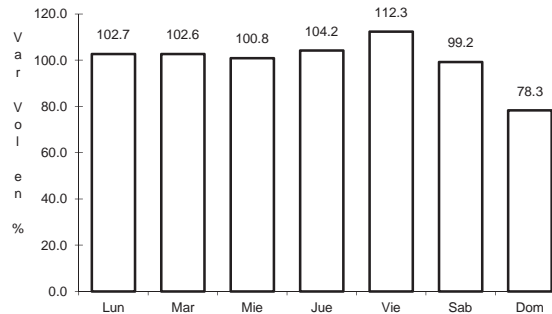
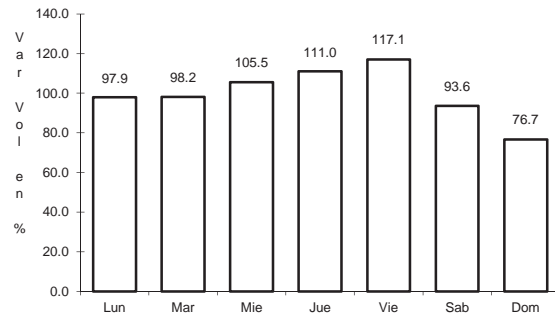
Km: 86.00 Tipo: 1 Sent: 0

Km: 160.00 Tipo: 1 Sent: 0

2 CARR: Durango - Ent. La Zarca

CLAVE: 10016

RUTA: MEX-045



Km: 0.00 Tipo: 3 Sent: 1

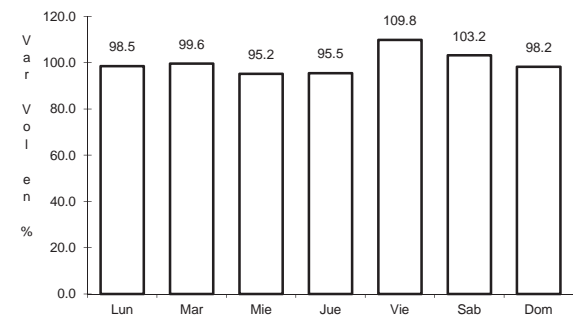
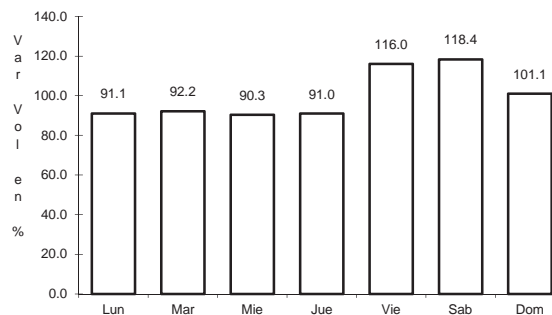
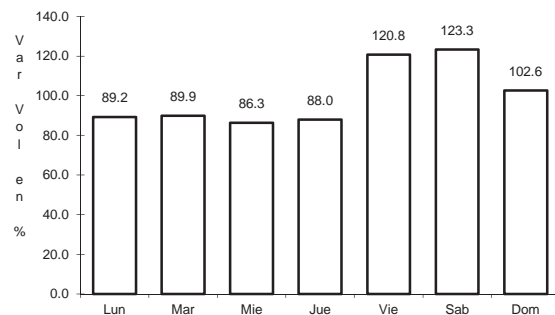
Km: 0.00 Tipo: 3 Sent: 2

Km: 239.50 Tipo: 1 Sent: 0

3 CARR: Durango - Mezquital

CLAVE: 10423

RUTA: MEX-023



Km: 0.00 Tipo: 3 Sent: 1

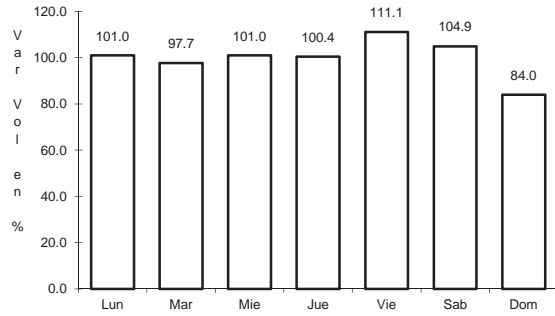
Km: 0.00 Tipo: 3 Sent: 2

Km: 13.00 Tipo: 3 Sent: 0

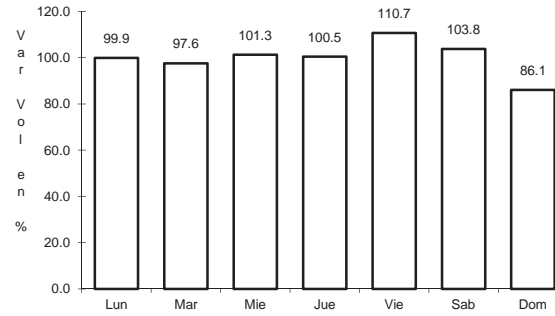
4 CARR: Durango - Torreón

CLAVE: 10085

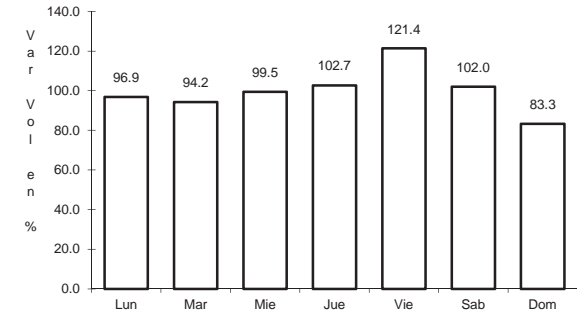
RUTA: MEX-040



Km: 0.00 Tipo: 3 Sent: 1



Km: 0.00 Tipo: 3 Sent: 2

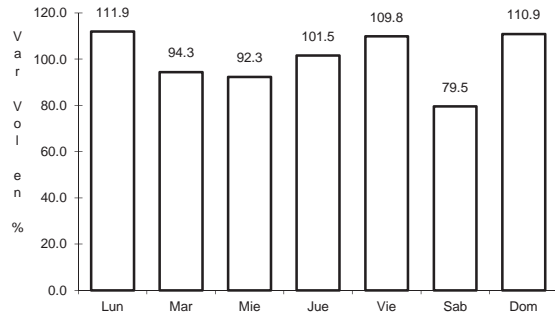


Km: 120.90 Tipo: 1 Sent: 0

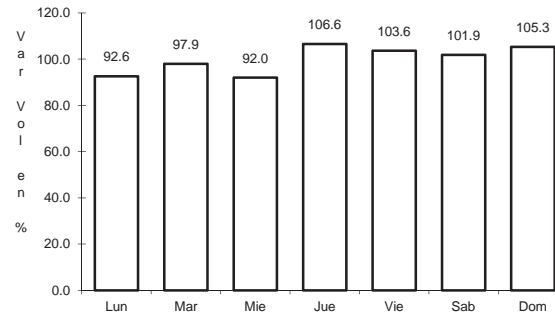
5 CARR: Durango - Villa Unión

CLAVE: 0083

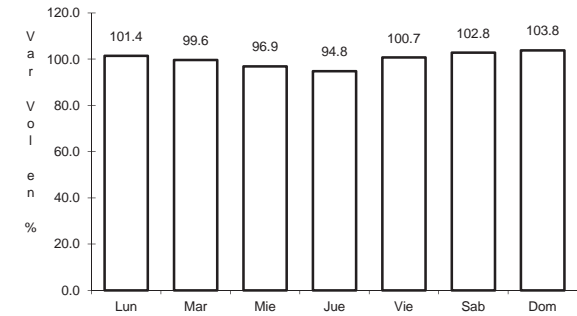
RUTA: MEX-040



Km: 0.00 Tipo: 3 Sent: 0



Km: 145.50 Tipo: 1 Sent: 0

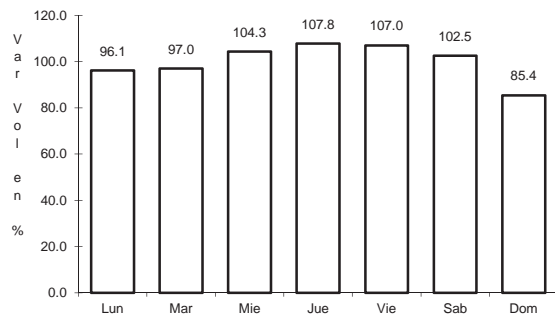


Km: 294.40 Tipo: 1 Sent: 0

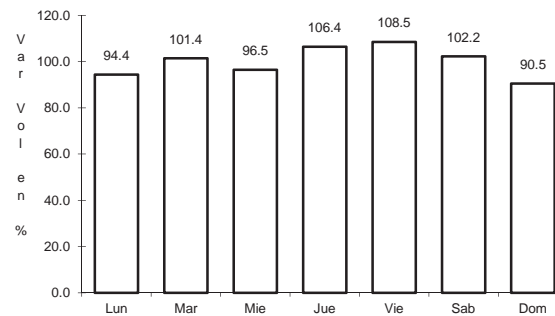
6 CARR: Ent. La Chicharrona - Cuencamé

CLAVE: 00152

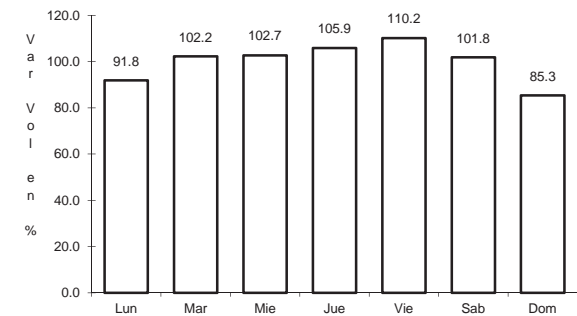
RUTA: MEX-049



Km: 0.00 Tipo: 3 Sent: 1



Km: 0.00 Tipo: 3 Sent: 2

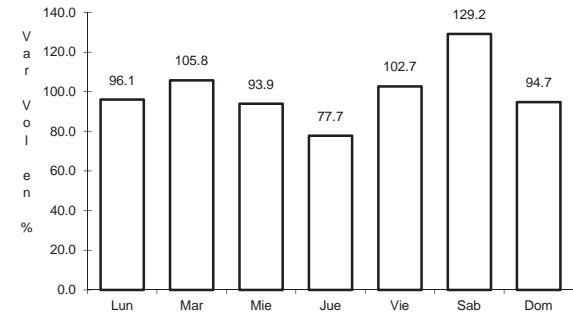
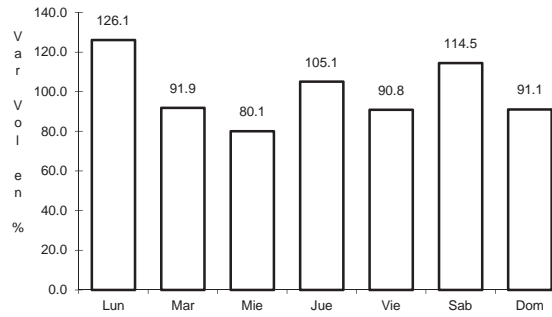
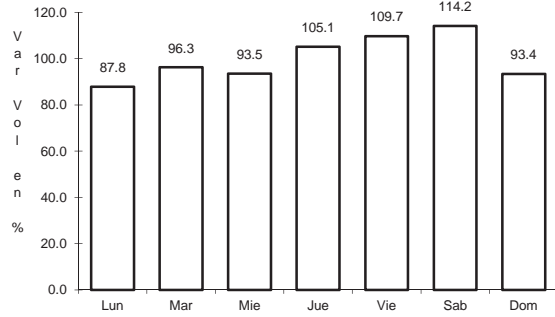


Km: 124.50 Tipo: 1 Sent: 0

7 CARR: Ent. La Zarca - Hidalgo del Parral

CLAVE: 00488

RUTA: MEX-045



Km: 0.00 Tipo: 3 Sent: 0

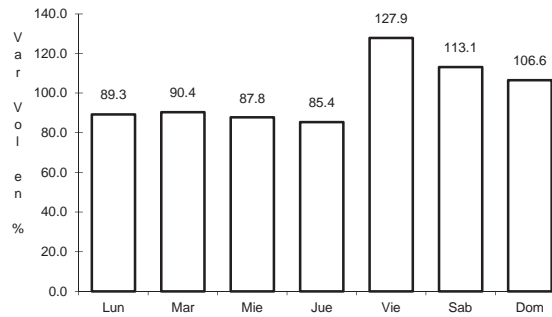
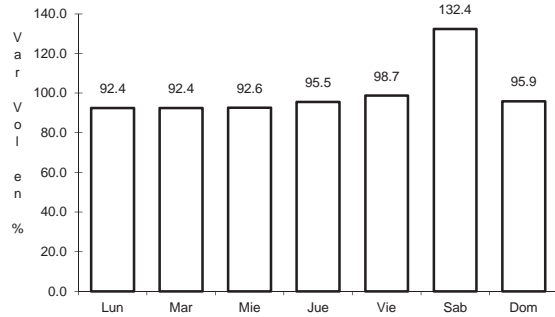
Km: 92.35 Tipo: 3 Sent: 0

Km: 171.00 Tipo: 1 Sent: 0

8 CARR: Ent. Los Herrera - Topia

CLAVE: 10090

RUTA: MEX-036



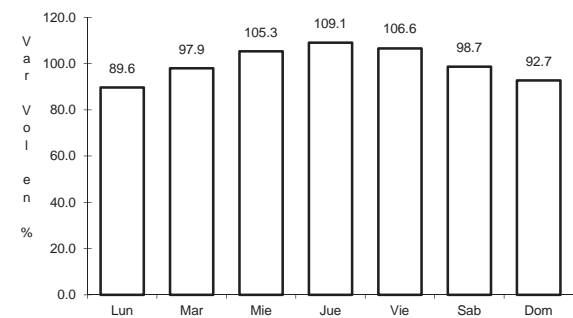
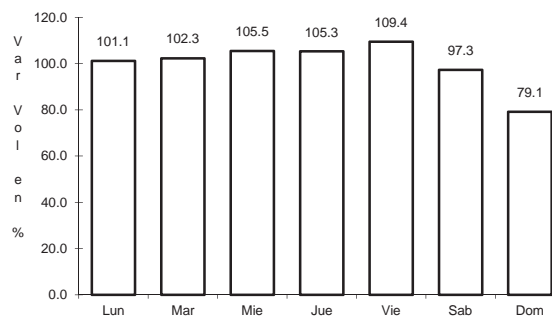
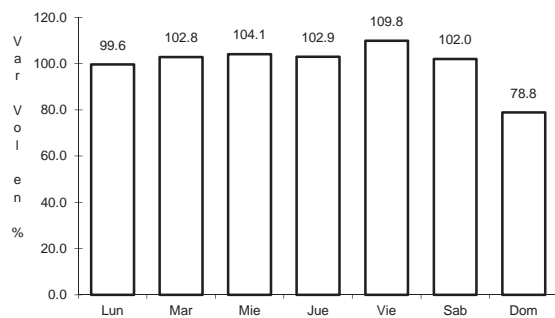
Km: 0.00 Tipo: 3 Sent: 0

Km: 80.00 Tipo: 1 Sent: 0

9 CARR: Gómez Palacio - Jiménez

CLAVE: 00006

RUTA: MEX-049



Km: 0.00 Tipo: 3 Sent: 1

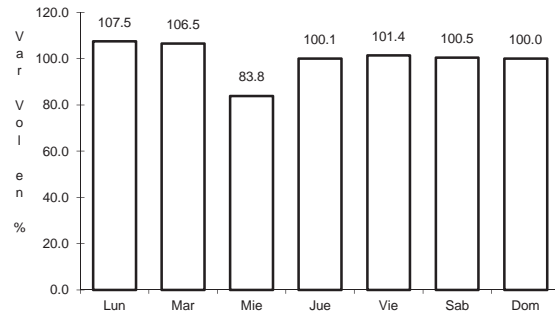
Km: 0.00 Tipo: 3 Sent: 2

Km: 107.95 Tipo: 1 Sent: 0

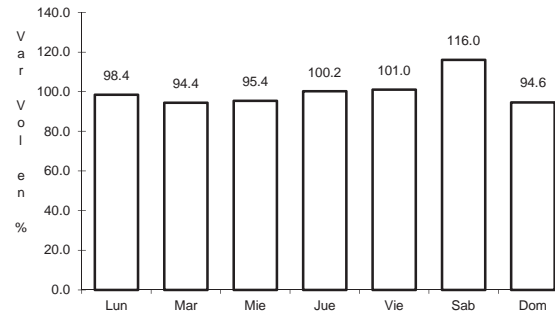
10 CARR: Gómez Palacio - La Unión

CLAVE: 10009

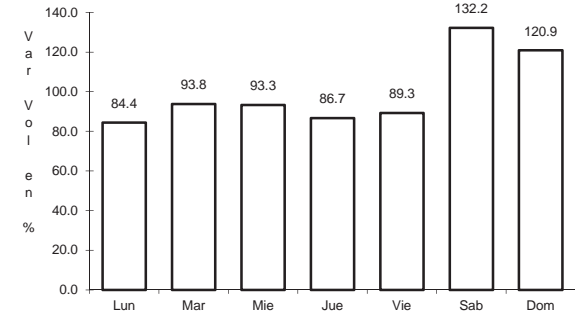
RUTA: MEX-040



Km: 0.00 Tipo: 3 Sent: 0



Km: 20.90 Tipo: 1 Sent: 0

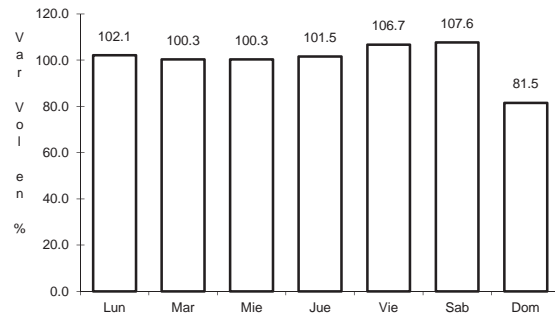


Km: 42.20 Tipo: 1 Sent: 0

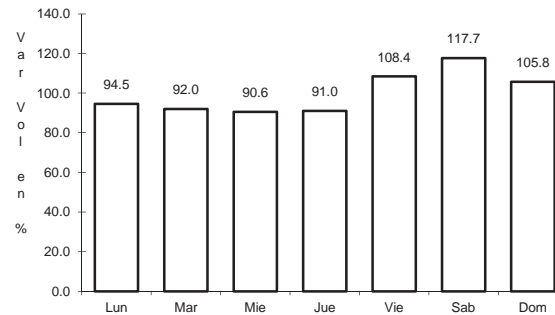
11 CARR: Gómez Palacio - Tlahualillo

CLAVE: 10005

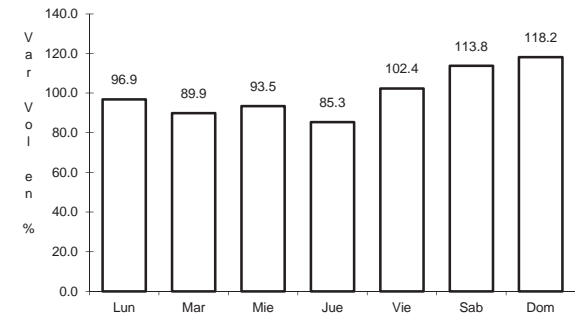
RUTA: MEX-040



Km: 5.60 Tipo: 1 Sent: 0



Km: 31.44 Tipo: 1 Sent: 0

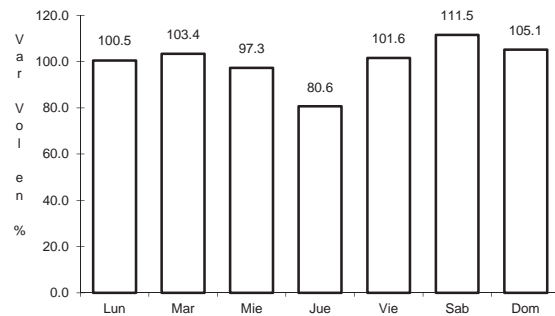


Km: 72.90 Tipo: 1 Sent: 0

12 CARR: Gregorio García - Francisco I. Madero

CLAVE: 00110

RUTA: MEX-040

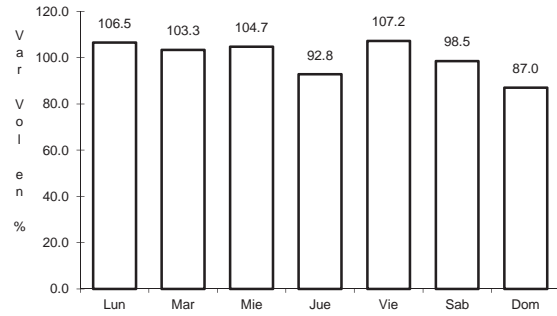


Km: 9.60 Tipo: 1 Sent: 0

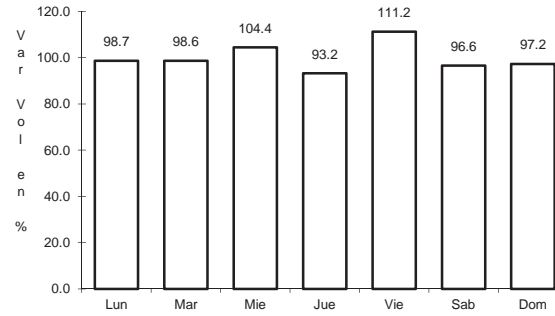
13 CARR: Guadalupe Aguilera - Tepehuanes

CLAVE: 10220

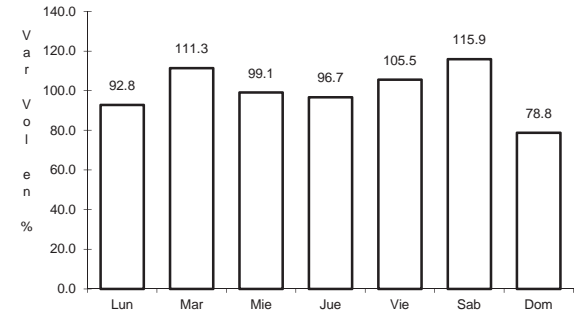
ruta: MEX-023



Km: 0.00 Tipo: 3 Sent: 1



Km: 0.00 Tipo: 3 Sent: 2

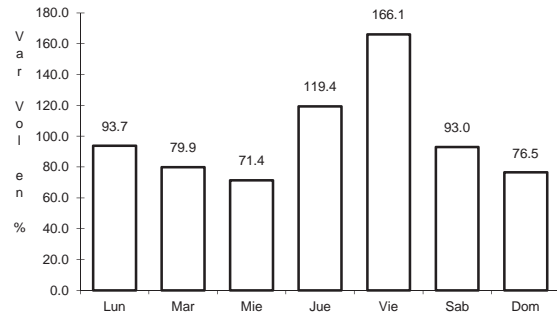


Km: 169.00 Tipo: 1 Sent: 0

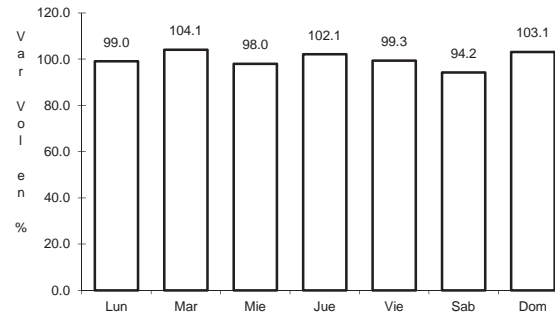
14 CARR: Hidalgo del Parral - Guadalupe y Calvo

CLAVE: 00802

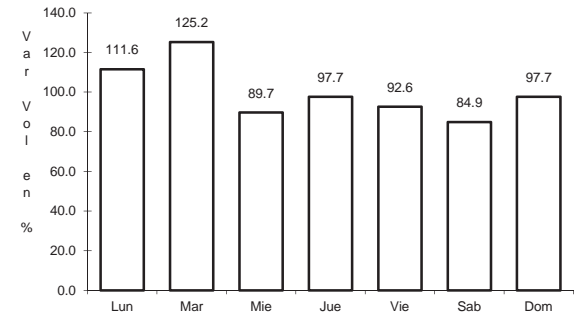
ruta: MEX-024



Km: 0.00 Tipo: 3 Sent: 0



Km: 110.00 Tipo: 1 Sent: 0

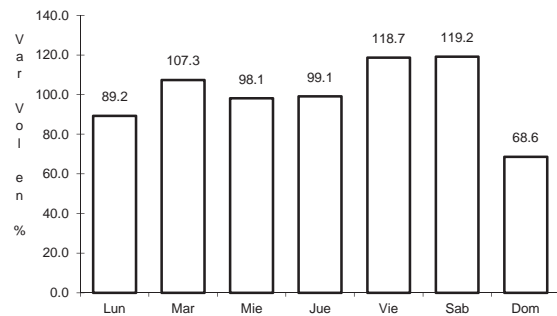


Km: 212.00 Tipo: 1 Sent: 0

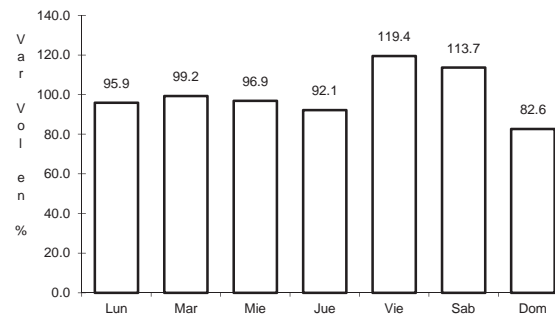
15 CARR: Libramiento Cuencamé

CLAVE: 10006

ruta: MEX



Km: 0.00 Tipo: 3 Sent: 1

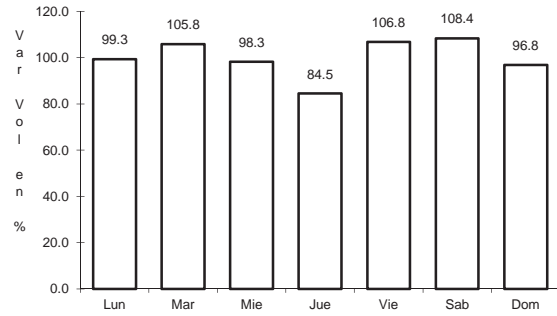


Km: 0.00 Tipo: 3 Sent: 2

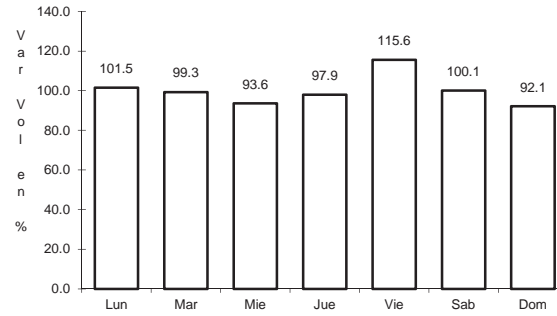
16 CARR: Pedriceña - Ent. Rodeo

CLAVE: 10002

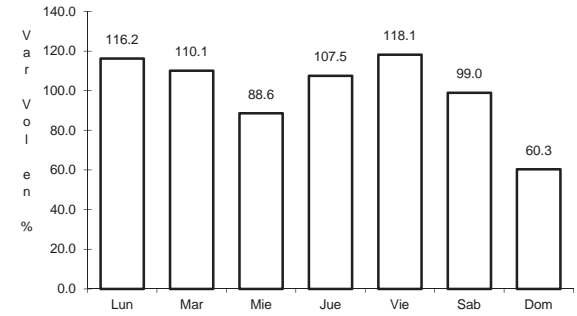
ruta: MEX-034



Km: 0.00 Tipo: 3 Sent: 0



Km: 45.00 Tipo: 1 Sent: 0

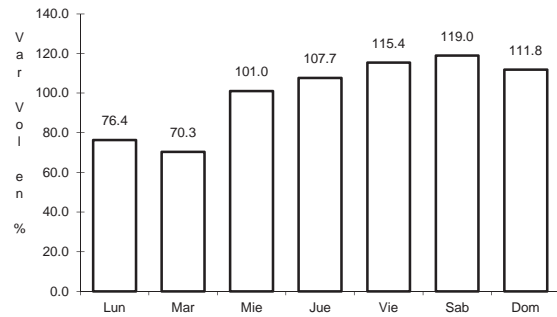


Km: 98.00 Tipo: 1 Sent: 0

17 CARR: Ramal a Otinapa

CLAVE: 10002

ruta: MEX

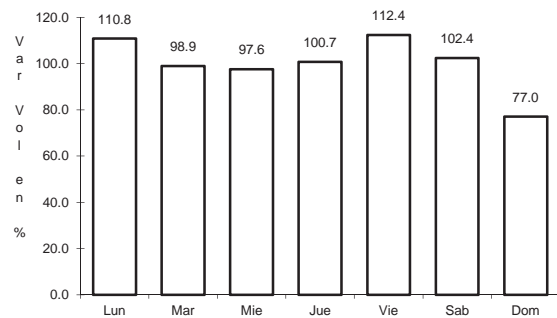


Km: 0.00 Tipo: 3 Sent: 0

18 CARR: Ramal a Santa Clara

CLAVE: 10287

ruta: MEX-049

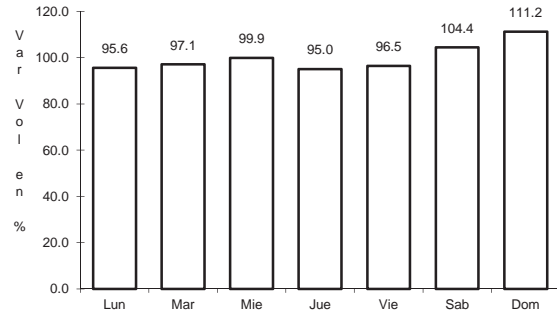


Km: 0.00 Tipo: 3 Sent: 0

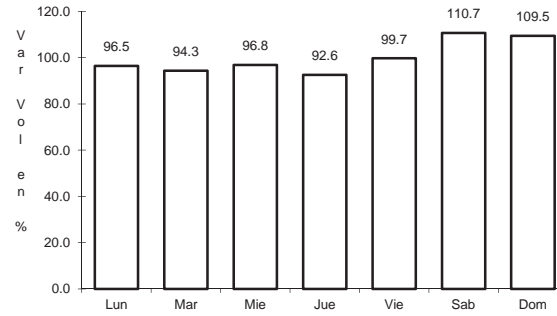
19 CARR: Ramal a Villa Juárez

CLAVE: 10287

RUTA: MEX-040



Km: 0.00 Tipo: 3 Sent: 1

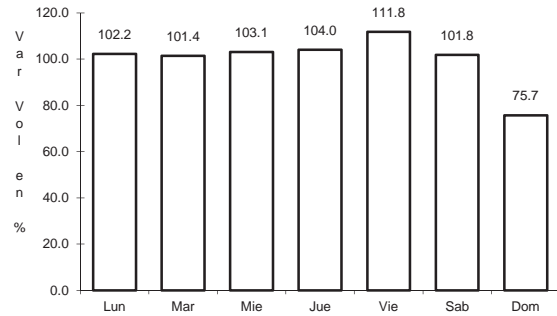


Km: 0.00 Tipo: 3 Sent: 2

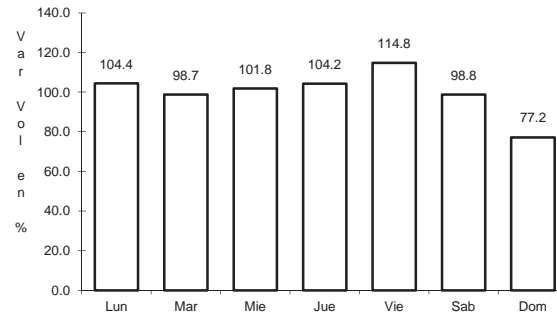
20 CARR: Zacatecas - Durango

CLAVE: 00544

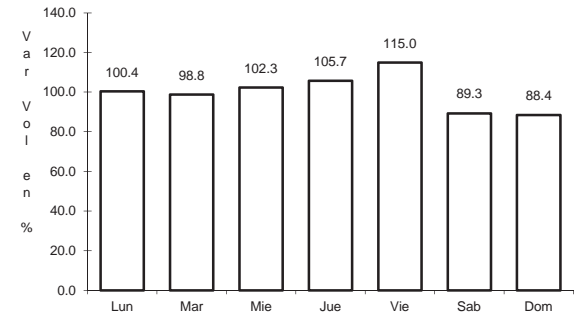
RUTA: MEX-045



Km: 6.40 Tipo: 3 Sent: 1



Km: 6.40 Tipo: 3 Sent: 2

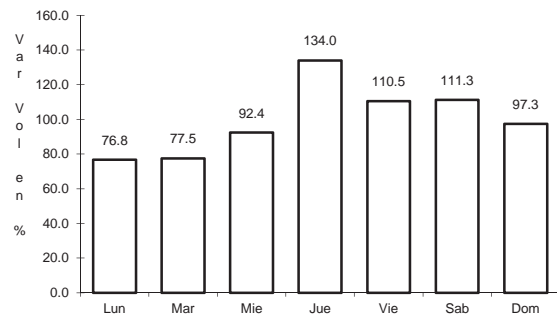


Km: 121.00 Tipo: 3 Sent: 0

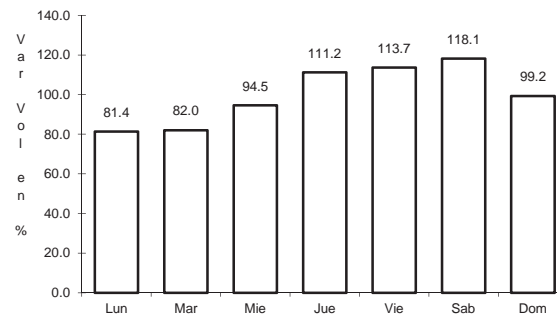
21 CARR: Durango - Mazatlán (Cuota)

CLAVE: 00084

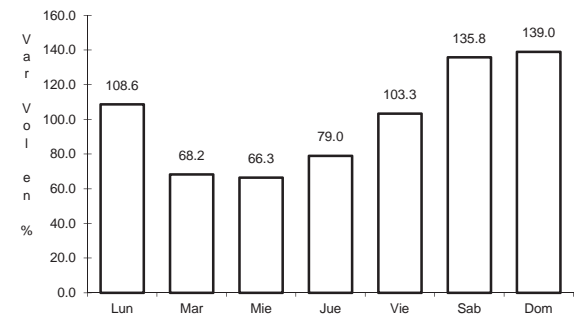
RUTA: MEX-040D



Km: 21.30 Tipo: 3 Sent: 0



Km: 44.50 Tipo: 1 Sent: 0

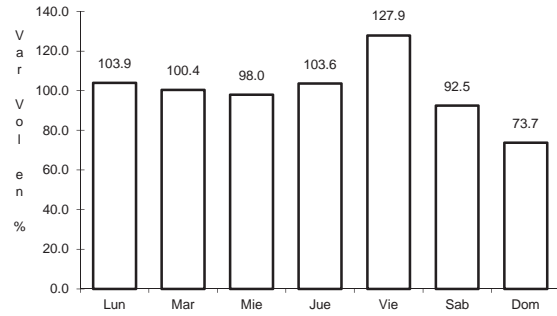


Km: 229.70 Tipo: 1 Sent: 0

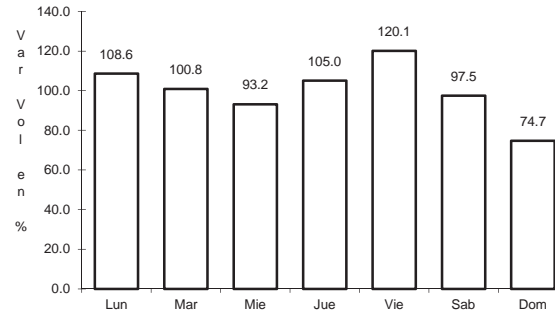
22 CARR: Durango - Yerbanís (Cuota)

CLAVE: 10003

RUTA: MEX-040D



Km: 5.31 Tipo: 1 Sent: 1

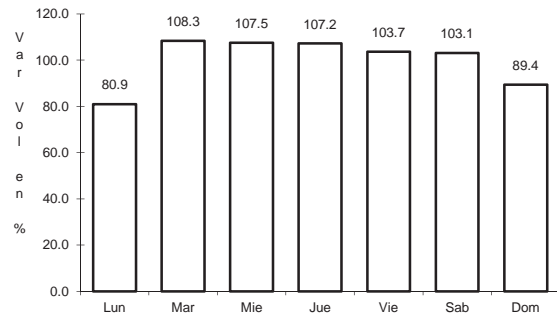


Km: 5.31 Tipo: 1 Sent: 2

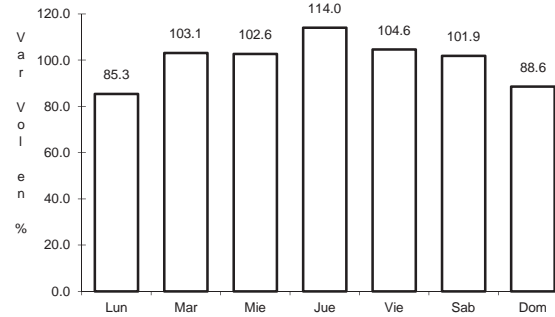
23 CARR: Gómez Palacio - Corralitos (Cuota)

CLAVE: 00016

RUTA: MEX-049D



Km: 2.21 Tipo: 1 Sent: 1

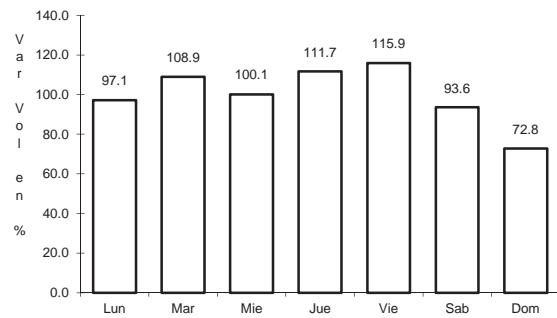


Km: 2.21 Tipo: 1 Sent: 2

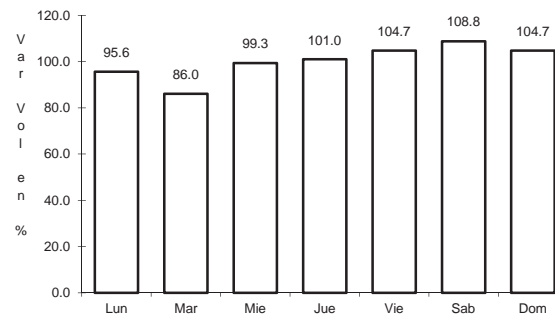
24 CARR: Libramiento de Durango (Cuota)

CLAVE: 10006

RUTA: MEX-040D



Km: 0.00 Tipo: 3 Sent: 0

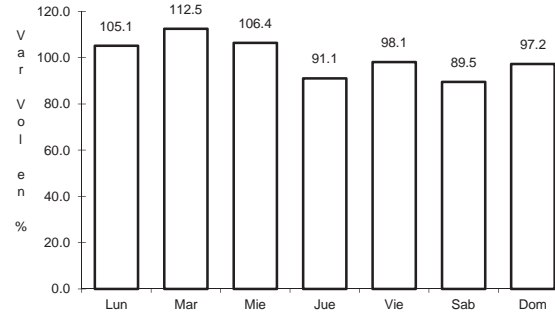
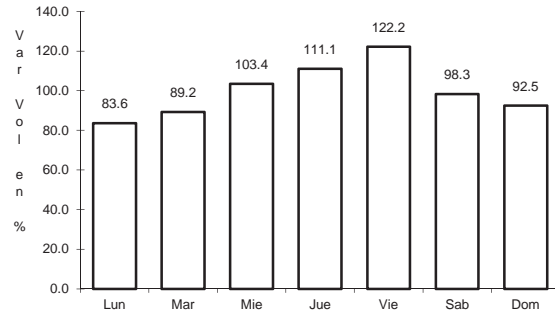


Km: 21.60 Tipo: 1 Sent: 0

25 CARR: Yerbanís - Gómez Palicio (Cuota)

CLAVE: 10003

RUTA: MEX-040D



Km: 180.00

Tipo: 1

Sent: 1

Km: 180.00

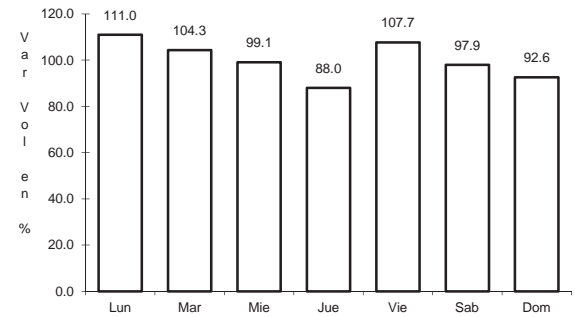
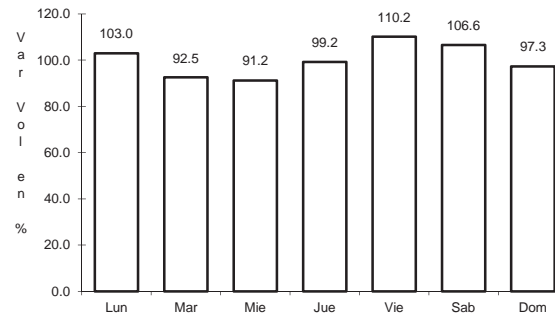
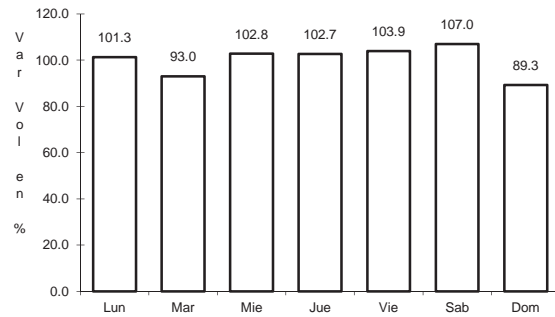
Tipo: 1

Sent: 2

26 CARR: Amado Neruo - La Ochoa

CLAVE: 10012

RUTA: DGO-542



Km: 0.00

Tipo: 3

Sent: 0

Km: 25.00

Tipo: 1

Sent: 0

Km: 42.00

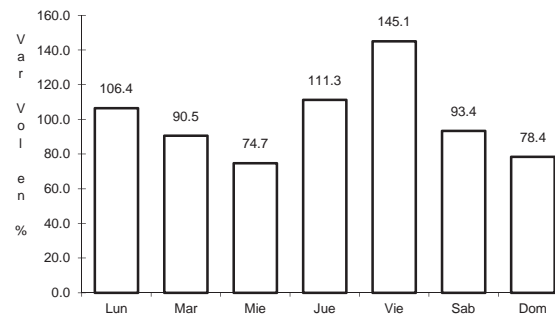
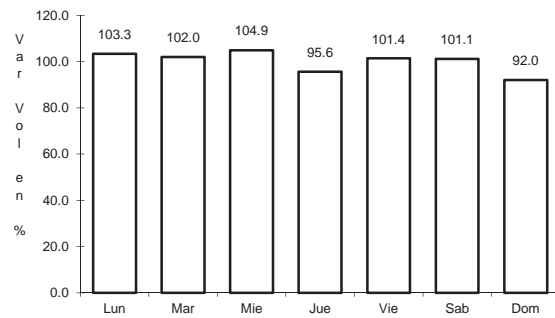
Tipo: 1

Sent: 0

27 CARR: Ceballos - El Mirador

CLAVE: 10417

RUTA: DGO-044



Km: 0.00

Tipo: 3

Sent: 0

Km: 113.50

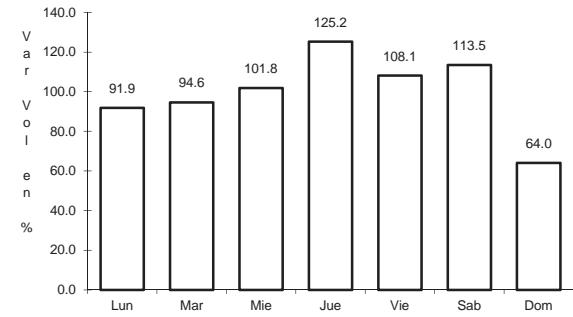
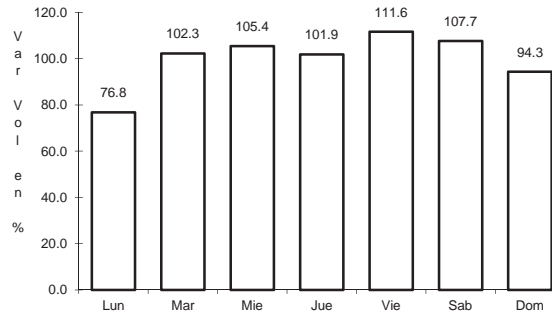
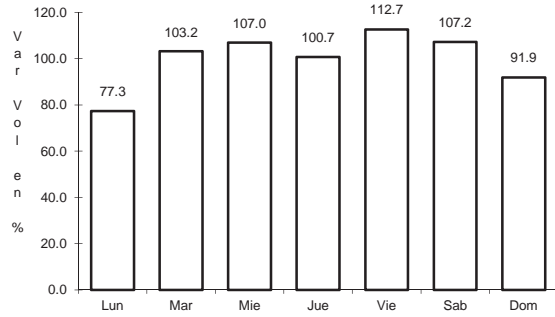
Tipo: 1

Sent: 0

28 CARR: Durango - Aserradero La Flor

CLAVE: 10422

RUTA: DGO-115



Km: 0.00 Tipo: 3 Sent: 1

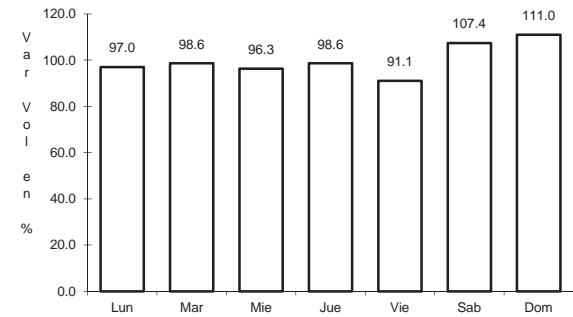
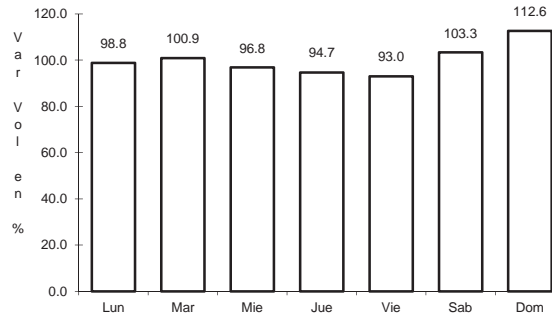
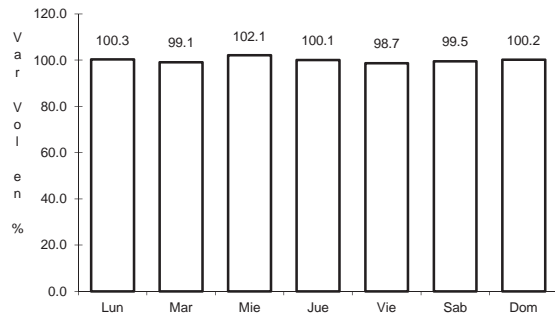
Km: 0.00 Tipo: 3 Sent: 2

Km: 39.00 Tipo: 1 Sent: 0

29 CARR: Jabonoso - Esmeralda

CLAVE: 10004

RUTA: DGO-363



Km: 0.00 Tipo: 3 Sent: 0

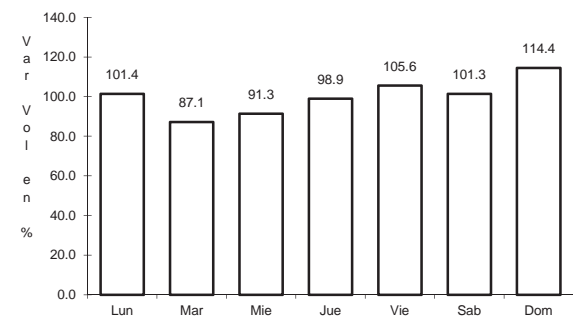
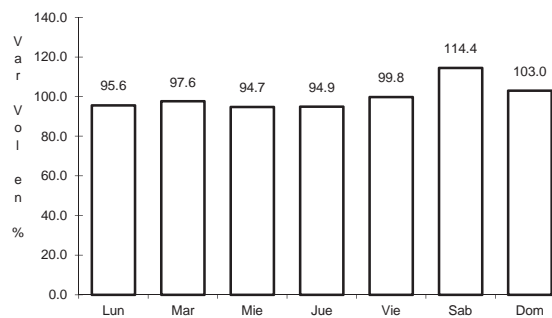
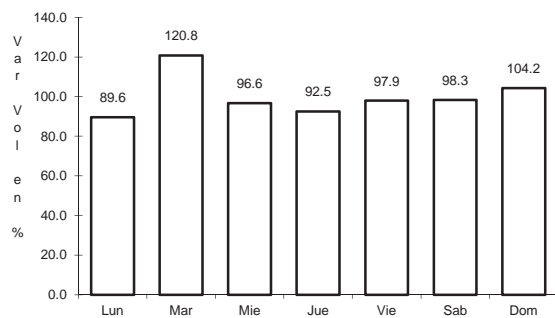
Km: 10.00 Tipo: 3 Sent: 0

Km: 16.30 Tipo: 1 Sent: 0

30 CARR: La Torreña - Brittingham

CLAVE: 10010

RUTA: DGO-325



Km: 0.00 Tipo: 3 Sent: 0

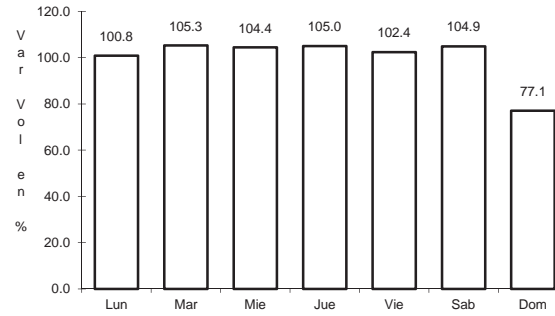
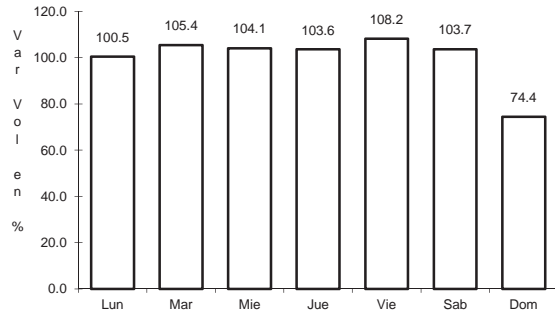
Km: 16.00 Tipo: 1 Sent: 0

Km: 33.00 Tipo: 1 Sent: 0

31 CARR: Libramiento de Torreón

CLAVE: 05516

RUTA: COA



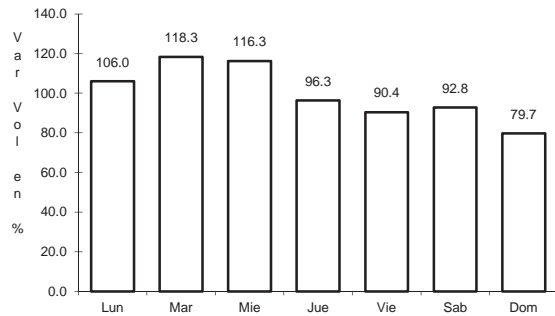
Km: 14.40 Tipo: 3 Sent: 1

Km: 14.40 Tipo: 3 Sent: 2

32 CARR: Libramiento Exterior Cuernamé

CLAVE: 10006

RUTA: DGO

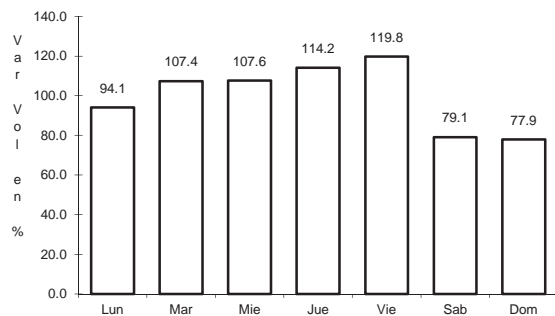


Km: 0.00 Tipo: 3 Sent: 0

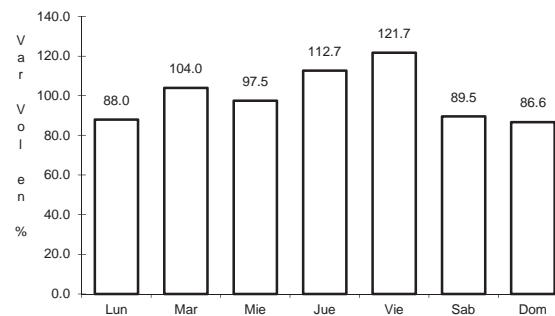
33 CARR: Mezquital - San Miguel de Temoaya

CLAVE: 10006

RUTA: DGO



Km: 0.00 Tipo: 3 Sent: 0

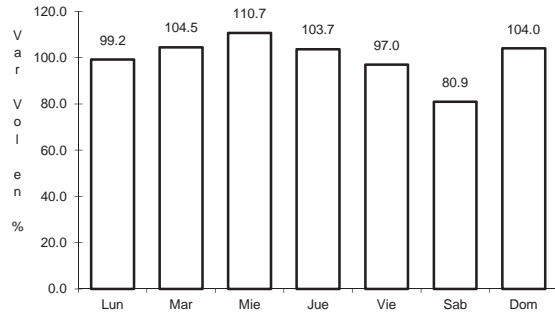


Km: 48.00 Tipo: 1 Sent: 0

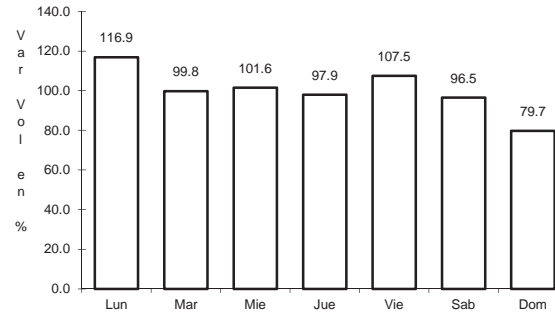
34 CARR: Ramal a San Juan del Río

CLAVE: 10001

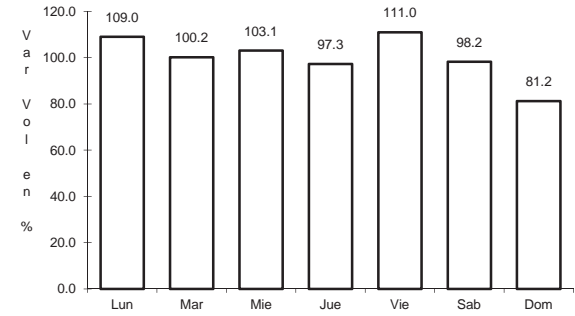
RUTA: DGO-290



Km: 0.00 Tipo: 3 Sent: 0



Km: 5.00 Tipo: 1 Sent: 1

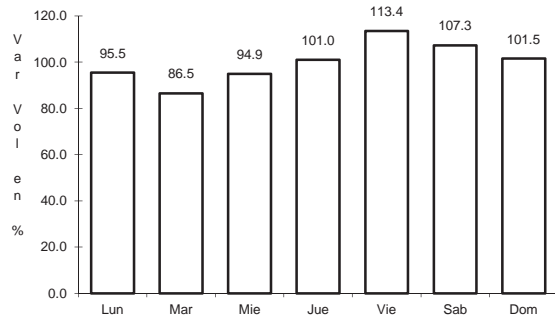


Km: 5.00 Tipo: 1 Sent: 2

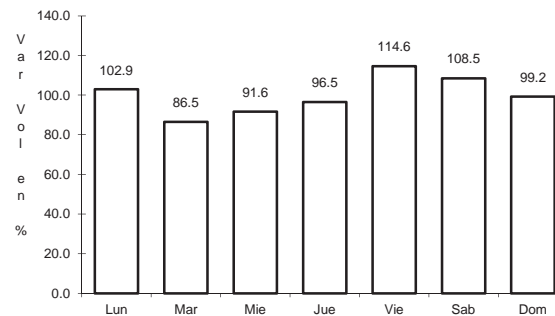
35 CARR: Súchil - Villa Unión

CLAVE: 10419

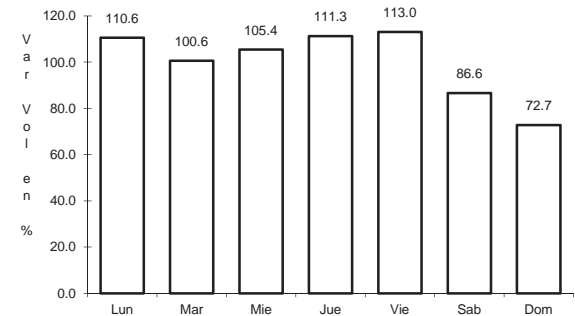
RUTA: DGO-241



Km: 0.00 Tipo: 3 Sent: 1



Km: 0.00 Tipo: 3 Sent: 2

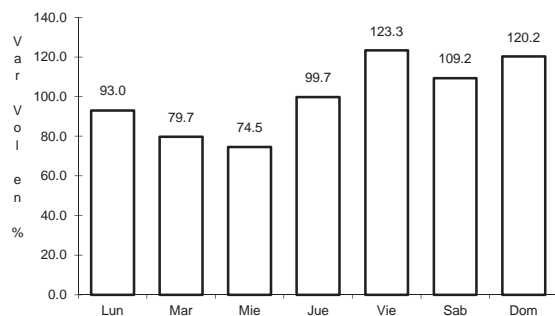


Km: 41.40 Tipo: 1 Sent: 0

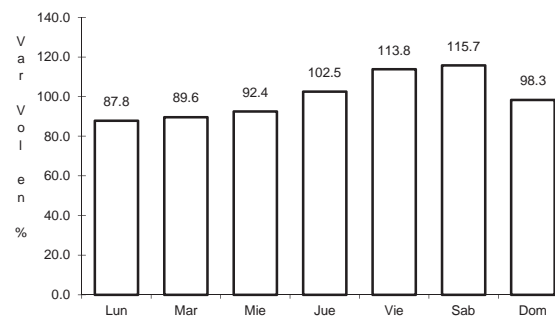
36 CARR: Tlahualillo de Zaragoza - T.C. Gómez Palacio - Jiménez

CLAVE: 10419

RUTA: DGO



Km: 0.00 Tipo: 3 Sent: 0

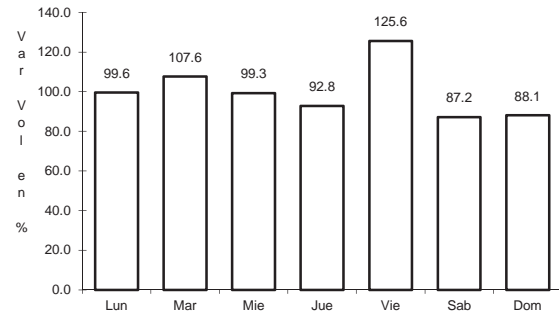


Km: 37.00 Tipo: 1 Sent: 0

37 CARR: Yerbanís - Peñón Blanco

CLAVE: 10032

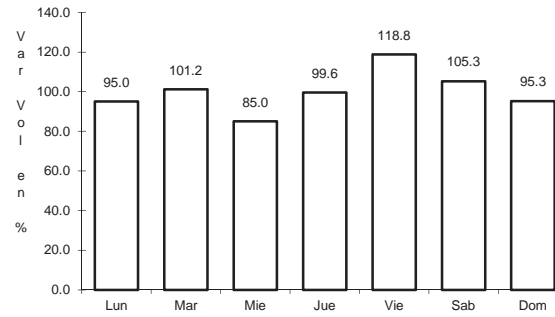
RUTA: DGO-316



Km: 0.00

Tipo: 3

Sent: 0



Km: 22.00

Tipo: 1

Sent: 0