

CHIHUAHUA

NO. INDICE	CARRETERA	RUTA
---RED FEDERAL LIBRE---		
1	Cd. Juárez - Janos	MEX-002
2	Chihuahua - El Sueco	MEX-045
3	Chihuahua - Ojinaga	MEX-016
4	Delicias - Chihuahua (Libre)	MEX-045
5	El Sueco - Janos	MEX-010
6	Ent. Ciudad Camargo - Saucillo	MEX-045
7	Ent. La Zarca - Hidalgo del Parral	MEX-045
8	Gómez Palacio - Jiménez	MEX-049
9	Hidalgo del Parral - Ent. Nuevo Palomas (Vía Corta)	MEX-024
10	Hidalgo del Parral - Guadalupe y Calvo	MEX-024
11	Hidalgo del Parral - Jiménez	MEX-045
12	Janos - Agua Prieta	MEX-002
13	Jerónimo - Sta. Teresa	MEX-002
14	La Junta - Yécora	MEX-016
15	Libramiento de Delicias - Meoqui	MEX-045
16	Porvenir - Cd. Juárez	MEX-002
17	Ramal a Aeropuerto de Chihuahua	MEX-016
18	Ramal a Palomas	MEX-002
19	Villa Ahumada - Cd. Juárez (Libre)	MEX-045
---RED FEDERAL DE CUOTA---		
20	Camargo - Delicias (Cuota)	MEX-045D
21	Chihuahua - Sacramento (Cuota)	MEX-045D
22	El Sueco - Villa Ahumada (Cuota)	MEX-045D
23	Gómez Palacio - Corralitos (Cuota)	MEX-049D
24	Jiménez - Camargo (Cuota)	MEX-045D
---RED ESTATAL LIBRE---		
25	Ahumada - Ricardo Flores Magón	CHIH
26	Cuauhtémoc - Buenaventura	CHIH
27	Delicias - Saucillo	CHIH-007
28	Ent. Peña Blanca - Ent. La Concha	CHIH
29	Ent. Puerto Justo - Ent. Guachochic	CHIH
30	Jiménez - Camargo	CHIH-049
31	Lázaro Cárdenas - Ent. Colonia San José	CHIH-004
32	Libramiento de Hidalgo del Parral	CHIH
33	Libramiento de Jiménez	CHIH
34	Meoqui - Julimes	CHIH-005
35	Ramal a Creel	CHIH
36	San Juanito - Ent. Basaseachi	CHIH
37	T. C. (Jiménez - Camargo) - Ojinaga	CHIH-018
38	T. Julimes - La Boquilla	CHIH-018
---RED ESTATAL DE CUOTA---		
39	Ent. El Álamo - Ent. Ricardo Flores Magón (Cuota)	CHIH-D
40	Ricardo Flores Magón - Galeana (Cuota)	CHIH-D
41	Samalayuca - San Jerónimo (Cuota)	CHIH-D
42	T. C. (Chihuahua - Ojinaga) - La Mula (Cuota)	CHIH-D
---CARRETERAS INTEGRADAS POR TRAMOS FEDERALES Y ESTATALES---		
43	Chihuahua - Madera	CHIH-D-MEX-001-CHIH
44	Ent. Agua Caliente - El Terrero	CHIH-MEX



CHIHUAHUA

1 CARR: Cd. Juárez - Janos

CLAVE: 08041

RUTA: MEX-002

AÑO: 2013

LUGAR	ESTACION				CLASIFICACION VEHICULAR EN PORCIENTO													COORDENADAS		
	KM	TE	SC	TDPA	M	A	B	C2	C3	T3S2	T3S3	T3S2R4	OTROS	A	B	C	K'	D	LATITUD	LONGITUD
T. C. El Sueco - Cd. Juárez	0.00	3	1	6043	0.7	80.3	4.0	6.4	2.4	3.2	1.2	1.0	0.8	81.0	4.0	15.0	0.070	0.504	31.607034	-106.456646
T. C. El Sueco - Cd. Juárez	0.00	3	2	5940	0.5	78.5	4.9	6.6	2.9	3.4	1.2	1.0	1.0	79.0	4.9	16.1	0.070	0.504	31.607033	-106.456655
T. Der. Palomas	112.00	1	0	1559	0.7	73.5	3.3	7.4	2.6	7.8	1.4	2.3	1.0	74.2	3.3	22.5	0.086	0.517	31.471505	-107.608504
Ascención	170.95	1	0	2916	0.3	69.3	2.6	14.3	2.6	6.6	1.3	2.5	0.5	69.6	2.6	27.8	0.073	0.506	31.103860	-107.988131
Janos	205.00	1	0	2839	0.3	73.3	3.5	10.2	1.3	6.5	1.5	2.9	0.5	73.6	3.5	22.9	0.068	0.510	30.899684	-108.180161

2 CARR: Chihuahua - El Sueco

CLAVE: 08419

RUTA: MEX-045

AÑO: 2013

LUGAR	ESTACION				CLASIFICACION VEHICULAR EN PORCIENTO													COORDENADAS		
	KM	TE	SC	TDPA	M	A	B	C2	C3	T3S2	T3S3	T3S2R4	OTROS	A	B	C	K'	D	LATITUD	LONGITUD
Chihuahua	0.00																			
San Cristóbal	24.00	1	0	3739	0.8	60.3	2.5	10.1	2.5	17.9	3.2	1.7	1.0	61.1	2.5	36.4	0.086	0.522	28.799562	-106.217227
T. C. Chihuahua - Sacramento (Cuota)	32.00	3	1	5022	0.9	61.7	5.6	10.8	1.5	13.9	2.2	2.4	1.0	62.6	5.6	31.8	0.069	0.515	28.869085	-106.228391
T. C. Chihuahua - Sacramento (Cuota)	32.00	3	2	5335	0.8	57.6	6.1	12.4	1.7	15.3	2.4	2.7	1.0	58.4	6.1	35.5	0.083	0.515	28.869082	-106.228390
T. Der. El Sauz	55.38	1	1	3907	0.5	61.6	5.3	9.1	1.6	16.4	2.1	2.5	0.9	62.1	5.3	32.6	0.084	0.527	29.049603	-106.328703
T. Der. El Sauz	55.38	1	2	4351	0.4	56.5	5.4	10.3	1.7	19.4	2.5	2.8	1.0	56.9	5.4	37.7	0.081	0.527	29.049603	-106.328703
Ent. El Sueco	155.87	1	1	3287	0.7	58.0	6.4	9.4	1.4	18.0	2.2	2.5	1.4	58.7	6.4	34.9	0.089	0.504	29.884321	-106.395711
Ent. El Sueco	155.87	1	2	3232	0.3	52.0	7.0	10.9	1.4	21.8	2.4	2.6	1.6	52.3	7.0	40.7	0.090	0.504	29.884322	-106.395710

3 CARR: Chihuahua - Ojinaga

CLAVE: 08042

RUTA: MEX-016

AÑO: 2013

LUGAR	ESTACION				CLASIFICACION VEHICULAR EN PORCIENTO													COORDENADAS		
	KM	TE	SC	TDPA	M	A	B	C2	C3	T3S2	T3S3	T3S2R4	OTROS	A	B	C	K'	D	LATITUD	LONGITUD
Chihuahua	0.00																			
T. Der. Aeropuerto	6.50	1	1	12748	1.4	82.0	0.7	5.9	1.1	4.5	2.8	0.8	0.8	83.4	0.7	15.9	0.078	0.526	28.686596	-106.015476
T. Der. Aeropuerto	6.50	1	2	11490	1.4	81.0	0.7	6.1	1.2	4.9	2.9	0.9	0.9	82.4	0.7	16.9	0.091	0.526	28.686597	-106.015475
T. Der. Aeropuerto	6.50	3	1	8656	1.0	84.6	1.2	8.8	0.9	1.5	1.3	0.3	0.4	85.6	1.2	13.2	0.080	0.500	28.696714	-106.009189
T. Der. Aeropuerto	6.50	3	2	8657	0.9	83.5	1.4	9.6	0.8	1.7	1.4	0.3	0.4	84.4	1.4	14.2	0.101	0.500	28.696711	-106.009199
Aldama	26.80	1	1	4952	1.2	85.8	1.2	9.0	0.6	1.1	0.8	0.1	0.2	87.0	1.2	11.8	0.095	0.500	28.818794	-105.925528
Aldama	26.80	1	2	4958	0.7	84.5	1.4	10.4	0.6	1.2	0.9	0.1	0.2	85.2	1.4	13.4	0.105	0.500	28.818794	-105.925528
Aldama	26.80	3	0	1062	2.6	77.0	3.2	14.6	0.4	1.1	0.9	0.0	0.2	79.6	3.2	17.2	0.107	0.501	28.838542	-105.898518
El Morrión	84.00	3	0	1498	0.1	68.1	5.5	16.4	2.2	4.9	1.5	0.6	0.7	68.2	5.5	26.3	0.080	0.502	29.064317	-105.604312
Coyame	141.00	1	0	393	0.5	74.2	1.7	15.3	2.8	3.3	1.5	0.1	0.6	74.7	1.7	23.6	0.132	0.524	29.453624	-105.094634
Ojinaga	224.00	1	0	2299	0.4	76.0	4.8	15.0	1.6	1.7	0.3	0.1	0.1	76.4	4.8	18.8	0.123	0.551	29.540095	-104.444837

CHIHUAHUA

4 CARR: Delicias - Chihuahua (Libre)

CLAVE: 08418

RUTA: MEX-045

AÑO: 2013

LUGAR	ESTACION				CLASIFICACION VEHICULAR EN PORCIENTO													COORDENADAS		
	KM	TE	SC	TDPA	M	A	B	C2	C3	T3S2	T3S3	T3S2R4	OTROS	A	B	C	K'	D	LATITUD	LONGITUD
Delicias	138.00																			
T. Der. Lazáro Cárdenas	166.87	1	1	7895	0.5	71.5	3.5	8.8	1.7	9.6	1.9	1.8	0.7	72.0	3.5	24.5	0.103	0.500	28.381194	-105.622577
T. Der. Lazáro Cárdenas	166.87	1	2	7913	0.8	67.3	3.9	9.9	1.9	11.1	2.2	2.0	0.9	68.1	3.9	28.0	0.076	0.500	28.381193	-105.622577
T. Der. Lazáro Cárdenas	166.87	3	1	6904	0.6	70.2	4.3	8.3	1.6	9.9	2.1	2.1	0.9	70.8	4.3	24.9	0.115	0.501	28.393383	-105.639120
T. Der. Lazáro Cárdenas	166.87	3	2	6930	0.5	66.4	4.7	9.7	1.9	11.2	2.2	2.3	1.1	66.9	4.7	28.4	0.077	0.501	28.393382	-105.639120
T. Der. Aquiles Serdán	210.00	1	1	8599	0.9	72.8	3.2	7.9	1.7	8.5	2.1	1.9	1.0	73.7	3.2	23.1	0.097	0.510	28.575718	-105.957708
T. Der. Aquiles Serdán	210.00	1	2	8261	0.6	69.4	3.5	9.2	2.0	9.8	2.4	2.0	1.1	70.0	3.5	26.5	0.080	0.510	28.575718	-105.957705
Chihuahua	222.56																			

5 CARR: El Sueco - Janos

CLAVE: 08037

RUTA: MEX-010

AÑO: 2013

LUGAR	ESTACION				CLASIFICACION VEHICULAR EN PORCIENTO													COORDENADAS		
	KM	TE	SC	TDPA	M	A	B	C2	C3	T3S2	T3S3	T3S2R4	OTROS	A	B	C	K'	D	LATITUD	LONGITUD
El Sueco	0.00	3	0	6493	1.1	58.2	4.0	12.0	2.7	11.1	4.9	4.3	1.7	59.3	4.0	36.7	0.079	0.503	29.893296	-106.400638
Ricardo Flores Magón	59.00	3	0	3875	1.0	53.3	3.9	12.9	2.1	18.6	3.6	3.7	0.9	54.3	3.9	41.8	0.065	0.503	29.944752	-106.970306
Buenaventura	114.00	1	0	1542	0.8	67.6	3.1	15.5	1.5	7.7	2.2	1.4	0.2	68.4	3.1	28.5	0.109	0.520	29.851086	-107.447549
Buenaventura	114.00	3	0	4287	0.6	74.3	2.1	16.5	0.8	3.8	0.9	0.5	0.5	74.9	2.1	23.0	0.068	0.504	29.865663	-107.477497
Nuevo Casas Grandes	195.00	3	0	7215	0.7	69.3	1.6	13.2	1.6	9.0	2.0	1.8	0.8	70.0	1.6	28.4	0.101	0.500	30.458297	-107.915581
Janos	257.00	1	0	3707	0.4	63.6	4.6	12.1	1.6	10.2	3.8	3.0	0.7	64.0	4.6	31.4	0.073	0.504	30.886296	-108.186236

6 CARR: Ent. Ciudad Camargo - Saucillo

CLAVE: 08417

RUTA: MEX-045

AÑO: 2013

LUGAR	ESTACION				CLASIFICACION VEHICULAR EN PORCIENTO													COORDENADAS		
	KM	TE	SC	TDPA	M	A	B	C2	C3	T3S2	T3S3	T3S2R4	OTROS	A	B	C	K'	D	LATITUD	LONGITUD
Camargo	0.00	3	0	4499	0.7	64.7	3.7	10.3	2.6	12.8	2.7	1.1	1.4	65.4	3.7	30.9	0.058	0.503	27.730527	-105.190290
T. Der. La Cruz	20.92	3	0	3518	0.7	64.7	3.7	10.3	2.6	12.8	2.7	1.1	1.4	65.4	3.7	30.9	0.082	0.519	27.866437	-105.208347
Saucillo	42.52	1	0	4644	0.8	74.9	2.9	10.4	1.9	7.0	1.5	0.2	0.4	75.7	2.9	21.4	0.064	0.523	28.017901	-105.290315

7 CARR: Ent. La Zarca - Hidalgo del Parral

CLAVE: 00488

RUTA: MEX-045

AÑO: 2013

LUGAR	ESTACION				CLASIFICACION VEHICULAR EN PORCIENTO													COORDENADAS		
	KM	TE	SC	TDPA	M	A	B	C2	C3	T3S2	T3S3	T3S2R4	OTROS	A	B	C	K'	D	LATITUD	LONGITUD
Ent. La Zarca	0.00	3	0	816	0.5	68.3	6.0	12.4	2.7	5.6	3.4	0.4	0.7	68.8	6.0	25.2	0.109	0.554	25.784522	-104.764657
T. Der. Ceballos	47.85	1	0	1036	2.0	74.4	3.7	10.0	1.5	5.0	2.9	0.2	0.3	76.4	3.7	19.9	0.103	0.502	26.139711	-105.028671
T. Der. Ceballos	47.85	3	0	1182	0.5	71.7	3.8	13.0	2.6	4.7	2.6	0.3	0.8	72.2	3.8	24.0	0.096	0.506	26.142436	-105.030773

CHIHUAHUA

7 CARR: Ent. La Zarca - Hidalgo del Parral

CLAVE: 00488

RUTA: MEX-045

AÑO: 2013

LUGAR	ESTACION				CLASIFICACION VEHICULAR EN PORCIENTO													COORDENADAS		
	KM	TE	SC	TDPA	M	A	B	C2	C3	T3S2	T3S3	T3S2R4	OTROS	A	B	C	K'	D	LATITUD	LONGITUD
T. Izq. Canutillo	92.35	3	0	1056	0.3	70.8	4.9	13.4	2.5	4.9	2.5	0.2	0.5	71.1	4.9	24.0	0.119	0.518	26.389268	-105.352162
Las Nieves	97.60	3	0	2484	0.9	74.5	2.8	12.8	2.0	3.8	2.0	0.5	0.7	75.4	2.8	21.8	0.083	0.514	26.400193	-105.405718
T. Izq. Ocampo	109.22	3	0	1287	0.3	68.5	4.3	13.6	3.2	5.2	3.2	0.7	1.0	68.8	4.3	26.9	0.082	0.535	26.443682	-105.494346
Lim. Edos. Term. Dgo. Ppia. Chih.	122.89																			
Matamoros	148.00	1	0	1186	0.3	67.1	4.5	16.3	2.5	5.4	3.1	0.2	0.6	67.4	4.5	28.1	0.084	0.505	26.751051	-105.581085
Hidalgo del Parral	171.00	1	0	2884	0.8	75.9	2.6	14.6	1.7	3.1	1.0	0.0	0.3	76.7	2.6	20.7	0.103	0.506	26.917868	-105.640653

8 CARR: Gómez Palacio - Jiménez

CLAVE: 00006

RUTA: MEX-049

AÑO: 2013

LUGAR	ESTACION				CLASIFICACION VEHICULAR EN PORCIENTO													COORDENADAS		
	KM	TE	SC	TDPA	M	A	B	C2	C3	T3S2	T3S3	T3S2R4	OTROS	A	B	C	K'	D	LATITUD	LONGITUD
Gómez Palacio	0.00	3	1	13314	2.0	72.5	3.3	9.4	2.6	6.4	1.7	1.8	0.3	74.5	3.3	22.2	0.085	0.503	25.599896	-103.507155
Gómez Palacio	0.00	3	2	13138	2.6	69.5	3.6	10.2	2.8	7.2	1.9	1.9	0.3	72.1	3.6	24.3	0.076	0.503	25.599898	-103.507148
X. C. La Torreña - Brittingham	10.96	1	1	9014	2.4	68.7	3.6	7.4	2.8	9.2	2.9	1.9	1.1	71.1	3.6	25.3	0.095	0.503	25.639417	-103.523666
X. C. La Torreña - Brittingham	10.96	1	2	8923	3.3	65.8	3.8	7.6	3.2	9.9	3.0	2.2	1.2	69.1	3.8	27.1	0.079	0.503	25.639423	-103.523669
T. Izq. Dinamita	26.27	1	1	5351	1.5	60.7	4.2	8.4	3.2	14.3	3.2	3.4	1.1	62.2	4.2	33.6	0.083	0.502	25.756076	-103.570015
T. Izq. Dinamita	26.27	1	2	5348	1.3	56.1	4.3	10.0	3.8	15.9	3.7	3.6	1.3	57.4	4.3	38.3	0.077	0.502	25.756076	-103.570014
Bermejillo	39.30	1	0	7316	1.3	56.7	3.7	9.4	4.2	16.3	3.7	2.8	1.9	58.0	3.7	38.3	0.062	0.504	25.874281	-103.616573
T. Izq. Ent. La Zarca	40.89	3	0	3816	0.8	42.8	4.8	9.5	4.5	26.0	6.3	3.8	1.5	43.6	4.8	51.6	0.062	0.527	25.905007	-103.629000
Yermo	107.95	1	0	2579	0.9	37.3	6.4	5.9	5.6	31.1	8.0	3.6	1.2	38.2	6.4	55.4	0.064	0.510	26.384704	-103.999874
Yermo	107.95	3	0	2795	0.7	43.3	4.5	5.7	4.6	28.3	7.6	4.1	1.2	44.0	4.5	51.5	0.054	0.510	26.403123	-104.017158
Ceballos	127.20	1	0	2671	1.2	38.2	6.7	7.3	4.5	27.8	8.3	4.6	1.4	39.4	6.7	53.9	0.054	0.501	26.518608	-104.122233
Ceballos	127.20	3	0	2446	0.8	39.2	6.6	6.4	4.0	29.0	7.8	5.1	1.1	40.0	6.6	53.4	0.074	0.505	26.536836	-104.139054
Lim. Edos. Term. Dgo. Ppia. Chih.	146.15																			
Estación Escalón	160.89	3	0	2263	0.8	36.9	6.0	6.8	5.1	29.6	9.2	4.3	1.3	37.7	6.0	56.3	0.058	0.506	26.754395	-104.339645
Jiménez	223.00	1	1	1174	0.4	40.0	6.5	7.0	4.1	29.8	7.9	3.4	0.9	40.4	6.5	53.1	0.066	0.502	27.096598	-104.860735
Jiménez	223.00	1	2	1163	0.6	33.9	6.7	7.8	4.4	33.2	8.6	3.9	0.9	34.5	6.7	58.8	0.060	0.502	27.096598	-104.860735

9 CARR: Hidalgo del Parral - Ent. Nuevo Palomas (Vía Corta)

CLAVE: 08811

RUTA: MEX-024

AÑO: 2013

LUGAR	ESTACION				CLASIFICACION VEHICULAR EN PORCIENTO													COORDENADAS		
	KM	TE	SC	TDPA	M	A	B	C2	C3	T3S2	T3S3	T3S2R4	OTROS	A	B	C	K'	D	LATITUD	LONGITUD
Hidalgo del Parral	0.00	3	0	5591	0.6	74.6	1.6	9.7	2.3	6.1	2.8	1.2	1.1	75.2	1.6	23.2	0.081	0.515	26.971861	-105.663334
Valle Zaragoza	66.00	1	0	2758	0.2	67.8	2.3	13.2	3.0	8.3	3.5	0.5	1.2	68.0	2.3	29.7	0.101	0.512	27.440434	-105.806578
Satevo	126.00	3	0	3012	0.3	66.1	3.0	14.4	2.3	6.9	4.1	1.7	1.2	66.4	3.0	30.6	0.093	0.514	27.968937	-106.124157

CHIHUAHUA

9 CARR: Hidalgo del Parral - Ent. Nuevo Palomas (Vía Corta)

CLAVE: 08811

RUTA: MEX-024

AÑO: 2013

LUGAR	ESTACION				CLASIFICACION VEHICULAR EN PORCIENTO													COORDENADAS		
	KM	TE	SC	TDPA	M	A	B	C2	C3	T3S2	T3S3	T3S2R4	OTROS	A	B	C	K'	D	LATITUD	LONGITUD
T. C. Chihuahua - Madera	182.40	1	0	3239	1.7	63.1	2.9	15.6	1.7	8.2	4.1	1.3	1.4	64.8	2.9	32.3	0.108	0.535	28.354495	-106.262090

10 CARR: Hidalgo del Parral - Guadalupe y Calvo

CLAVE: 00802

RUTA: MEX-024

AÑO: 2013

LUGAR	ESTACION				CLASIFICACION VEHICULAR EN PORCIENTO													COORDENADAS		
	KM	TE	SC	TDPA	M	A	B	C2	C3	T3S2	T3S3	T3S2R4	OTROS	A	B	C	K'	D	LATITUD	LONGITUD
T. C. Hidalgo del Parral - Santa Bárbara	0.00	3	0	3101	0.5	71.3	1.7	13.3	5.3	4.4	2.0	0.3	1.2	71.8	1.7	26.5	0.107	0.510	26.915633	-105.764650
T. Der. Guacho chic	35.00	1	0	884	0.7	62.3	3.0	14.6	5.9	5.6	5.2	2.1	0.6	63.0	3.0	34.0	0.093	0.515	26.826957	-106.010964
T. Der. Guacho chic	35.00	3	0	805	0.5	69.1	2.4	13.2	5.5	5.2	3.6	0.1	0.4	69.6	2.4	28.0	0.092	0.506	26.811088	-106.015632
Lim. Edos. Term. Chih. Ppia. Dgo	38.00																			
Lim. Edos. Term. Dgo. Ppia. Chih.	57.00																			
El Vergel	110.00	1	0	1299	0.9	63.3	2.8	12.5	7.0	6.2	5.2	1.5	0.6	64.2	2.8	33.0	0.092	0.507	26.526706	-106.353846
Puerto Sabin al	212.00	1	0	732	0.6	66.3	2.0	14.5	8.3	4.6	2.2	0.3	1.2	66.9	2.0	31.1	0.092	0.541	26.068714	-106.779088
Guadalupe y Calvo	234.00																			

11 CARR: Hidalgo del Parral - Jiménez

CLAVE: 08444

RUTA: MEX-045

AÑO: 2013

LUGAR	ESTACION				CLASIFICACION VEHICULAR EN PORCIENTO													COORDENADAS		
	KM	TE	SC	TDPA	M	A	B	C2	C3	T3S2	T3S3	T3S2R4	OTROS	A	B	C	K'	D	LATITUD	LONGITUD
Hidalgo del Parral	0.00	3	1	3816	0.8	84.3	2.2	6.3	0.8	2.4	1.6	0.8	0.8	85.1	2.2	12.7	0.096	0.506	26.934082	-105.634950
Hidalgo del Parral	0.00	3	2	3725	1.0	82.1	2.6	7.0	0.9	2.7	1.9	1.0	0.8	83.1	2.6	14.3	0.093	0.506	26.934082	-105.634951
Jiménez	76.63	1	1	2664	1.7	76.0	3.2	7.8	1.8	4.1	2.8	1.5	1.1	77.7	3.2	19.1	0.089	0.504	27.139798	-104.945795
Jiménez	76.63	1	2	2624	1.5	74.1	3.7	8.3	1.9	4.8	3.3	1.4	1.0	75.6	3.7	20.7	0.076	0.504	27.139769	-104.945879

12 CARR: Janos - Agua Prieta

CLAVE: 00220

RUTA: MEX-002

AÑO: 2013

LUGAR	ESTACION				CLASIFICACION VEHICULAR EN PORCIENTO													COORDENADAS		
	KM	TE	SC	TDPA	M	A	B	C2	C3	T3S2	T3S3	T3S2R4	OTROS	A	B	C	K'	D	LATITUD	LONGITUD
T. C. Cd. Juárez - Janos	0.00	3	0	3565	0.5	53.6	3.8	9.0	1.7	21.1	3.8	5.6	0.9	54.1	3.8	42.1	0.065	0.505	30.889975	-108.216227
Los Mimbres	56.00	3	0	1762	2.0	48.4	3.9	8.4	2.3	21.2	5.9	6.5	1.4	50.4	3.9	45.7	0.072	0.509	31.272017	-108.615862
Lim. Edos. Term. Chih. Ppia. Son.	78.00																			
Agua Prieta	160.00	1	0	2686	0.5	48.6	4.1	8.5	1.8	24.0	4.5	7.2	0.8	49.1	4.1	46.8	0.069	0.511	31.322422	-109.508036

CHIHUAHUA

13 CARR: Jerónimo - Sta. Teresa

CLAVE: 08043

RUTA: MEX-002

AÑO: 2013

LUGAR	ESTACION				CLASIFICACION VEHICULAR EN PORCIENTO														COORDENADAS	
	KM	TE	SC	TDPA	M	A	B	C2	C3	T3S2	T3S3	T3S2R4	OTROS	A	B	C	K'	D	LATITUD	LONGITUD
X. C. Cd. Juárez - Janos	0.00	3	0	2074	0.5	65.4	4.2	16.1	2.9	9.7	0.6	0.1	0.5	65.9	4.2	29.9	0.093	0.521	31.617112	-106.684649
El Mirador	20.00																			

14 CARR: La Junta - Yécora

CLAVE: 00065

RUTA: MEX-016

AÑO: 2013

LUGAR	ESTACION				CLASIFICACION VEHICULAR EN PORCIENTO														COORDENADAS	
	KM	TE	SC	TDPA	M	A	B	C2	C3	T3S2	T3S3	T3S2R4	OTROS	A	B	C	K'	D	LATITUD	LONGITUD
T. C. Chihuahua - Madera	0.00	3	0	4290	0.6	75.4	1.6	15.5	1.5	3.6	1.1	0.2	0.5	76.0	1.6	22.4	0.083	0.503	28.474395	-107.317521
T. Izq. San Juanito	16.00	1	0	2398	0.3	65.7	2.4	20.7	2.8	5.1	2.0	0.4	0.6	66.0	2.4	31.6	0.093	0.508	28.388735	-107.439660
T. Izq. San Juanito	16.00	3	0	1158	0.4	63.6	1.6	22.3	2.9	5.5	2.5	0.3	0.9	64.0	1.6	34.4	0.087	0.502	28.390898	-107.441843
Tomochi	70.00	3	0	1200	0.8	59.5	2.0	25.8	3.2	5.3	2.2	0.6	0.6	60.3	2.0	37.7	0.121	0.506	28.352620	-107.852570
Lim. Edos. Term. Chih. Ppia. Son.	190.00																			
Yécora	253.00	1	0	954	1.1	58.2	11.5	10.2	3.5	9.4	4.9	0.0	1.2	59.3	11.5	29.2	0.095	0.507	28.366640	-108.923165

15 CARR: Libramiento de Delicias - Meoqui

CLAVE: 08813

RUTA: MEX-045

AÑO: 2013

LUGAR	ESTACION				CLASIFICACION VEHICULAR EN PORCIENTO														COORDENADAS	
	KM	TE	SC	TDPA	M	A	B	C2	C3	T3S2	T3S3	T3S2R4	OTROS	A	B	C	K'	D	LATITUD	LONGITUD
T. C. Jiménez - Chihuahua	0.00	3	1	10221	0.8	77.6	2.9	6.9	1.7	6.4	1.7	1.3	0.7	78.4	2.9	18.7	0.084	0.507	28.190313	-105.452523
T. C. Jiménez - Chihuahua	0.00	3	2	10470	0.8	75.6	3.1	8.1	1.7	6.7	1.8	1.4	0.8	76.4	3.1	20.5	0.081	0.507	28.190313	-105.452522
T. C. Jiménez - Chihuahua	13.60	1	1	8227	0.5	74.0	3.7	7.0	2.4	8.1	1.7	1.8	0.8	74.5	3.7	21.8	0.087	0.541	28.285828	-105.479832
T. C. Jiménez - Chihuahua	13.60	1	2	6771	0.6	70.3	4.2	8.3	2.7	9.1	2.0	2.0	0.8	70.9	4.2	24.9	0.078	0.541	28.285827	-105.479832

16 CARR: Porvenir - Cd. Juárez

CLAVE: 08169

RUTA: MEX-002

AÑO: 2013

LUGAR	ESTACION				CLASIFICACION VEHICULAR EN PORCIENTO														COORDENADAS	
	KM	TE	SC	TDPA	M	A	B	C2	C3	T3S2	T3S3	T3S2R4	OTROS	A	B	C	K'	D	LATITUD	LONGITUD
Porvenir	0.00																			
T. Der. Puente Porvenir	1.67	3	0	1152	0.6	75.5	6.5	16.2	0.3	0.7	0.1	0.0	0.1	76.1	6.5	17.4	0.088	0.514	31.259654	-105.880256
Guadalupe	30.54	1	0	2228	0.7	76.4	6.2	13.0	0.5	2.0	0.6	0.3	0.3	77.1	6.2	16.7	0.079	0.504	31.384866	-106.091160
San Isidro	55.93	1	0	3566	0.8	80.3	4.0	11.7	0.9	1.6	0.4	0.1	0.2	81.1	4.0	14.9	0.101	0.521	31.539868	-106.272097
Zaragoza	70.32	1	1	12999	1.7	86.4	3.7	3.4	1.7	1.4	1.0	0.3	0.4	88.1	3.7	8.2	0.093	0.510	31.621045	-106.324490
Zaragoza	70.32	1	2	12486	1.7	85.4	4.3	3.7	1.7	1.4	1.1	0.3	0.4	87.1	4.3	8.6	0.083	0.510	31.621045	-106.324505
Cd. Juárez	81.43																			



CHIHUAHUA

17 CARR: Ramal a Aeropuerto de Chihuahua

CLAVE: 08421

RUTA: MEX-016

AÑO: 2013

LUGAR	ESTACION				CLASIFICACION VEHICULAR EN PORCIENTO													COORDENADAS		
	KM	TE	SC	TDPA	M	A	B	C2	C3	T3S2	T3S3	T3S2R4	OTROS	A	B	C	K'	D	LATITUD	LONGITUD
T. C. Chihuahua - Ojinaga	0.00	3	1	3399	1.3	90.4	2.0	5.4	0.2	0.2	0.3	0.1	0.1	91.7	2.0	6.3	0.086	0.501	28.679745	-105.994052
T. C. Chihuahua - Ojinaga Aeropuerto	0.00 5.00	3	2	3413	1.3	89.6	2.2	6.0	0.2	0.2	0.3	0.1	0.1	90.9	2.2	6.9	0.077	0.501	28.679755	-105.994047

18 CARR: Ramal a Palomas

CLAVE: 08019

RUTA: MEX-002

AÑO: 2013

LUGAR	ESTACION				CLASIFICACION VEHICULAR EN PORCIENTO													COORDENADAS		
	KM	TE	SC	TDPA	M	A	B	C2	C3	T3S2	T3S3	T3S2R4	OTROS	A	B	C	K'	D	LATITUD	LONGITUD
T. C. Cd. Juárez - Janos	0.00	3	0	1380	0.3	79.6	4.2	7.2	0.7	7.5	0.2	0.1	0.2	79.9	4.2	15.9	0.083	0.556	31.471746	-107.613092
T. Izq. Guadalupe Victoria Palomas	7.50 34.10	3	0	1043	0.2	75.8	3.6	9.9	1.3	8.9	0.1	0.1	0.1	76.0	3.6	20.4	0.087	0.503	31.544688	-107.612568

19 CARR: Villa Ahumada - Cd. Juárez (Libre)

CLAVE: 08420

RUTA: MEX-045

AÑO: 2013

LUGAR	ESTACION				CLASIFICACION VEHICULAR EN PORCIENTO													COORDENADAS		
	KM	TE	SC	TDPA	M	A	B	C2	C3	T3S2	T3S3	T3S2R4	OTROS	A	B	C	K'	D	LATITUD	LONGITUD
Villa Ahumada	83.63	3	1	3375	0.8	61.8	5.6	10.7	1.6	15.1	1.9	1.6	0.9	62.6	5.6	31.8	0.095	0.530	30.642189	-106.514865
Villa Ahumada	83.63	3	2	3809	0.3	57.7	6.5	12.2	1.5	16.8	2.2	1.7	1.1	58.0	6.5	35.5	0.088	0.530	30.642182	-106.514857
Samalayuca	167.65	3	1	4071	1.0	64.7	5.1	11.0	1.6	12.4	1.4	1.7	1.1	65.7	5.1	29.2	0.100	0.507	31.372700	-106.466243
Samalayuca	167.65	3	2	4193	0.5	60.7	5.8	12.6	1.8	14.2	1.6	1.7	1.1	61.2	5.8	33.0	0.108	0.507	31.373143	-106.466946
T. Izq. Janos	197.92	1	1	6560	1.0	69.5	3.4	10.2	3.2	9.6	1.2	0.9	1.0	70.5	3.4	26.1	0.103	0.501	31.601648	-106.454394
T. Izq. Janos	197.92	1	2	6528	1.1	67.9	3.7	11.0	3.3	9.7	1.4	0.9	1.0	69.0	3.7	27.3	0.079	0.501	31.601648	-106.454395
T. Der. Antiquo Aeropuerto	201.35	1	1	17899	1.8	82.4	2.9	5.7	1.7	2.4	1.7	0.7	0.7	84.2	2.9	12.9	0.076	0.512	31.622151	-106.445285
T. Der. Antiquo Aeropuerto Cd. Juárez	201.35 219.00	1	2	18743	3.0	79.7	3.2	6.1	1.9	2.8	1.8	0.8	0.7	82.7	3.2	14.1	0.067	0.512	31.622151	-106.445286

20 CARR: Camargo - Delicias (Cuota)

CLAVE: 08418

RUTA: MEX-045D

AÑO: 2013

LUGAR	ESTACION				CLASIFICACION VEHICULAR EN PORCIENTO													COORDENADAS		
	KM	TE	SC	TDPA	M	A	B	C2	C3	T3S2	T3S3	T3S2R4	OTROS	A	B	C	K'	D	LATITUD	LONGITUD
Camargo	68.98																			
Caseta de Cobro Altavista	73.00	2	1	2188	0.0	53.6	6.7	6.4	3.4	19.8	2.3	6.4	1.4	53.6	6.7	39.7	0.088	0.500	27.730836	-105.197889
Caseta de Cobro Altavista	73.00	2	2	2188	0.0	53.6	6.7	6.4	3.4	19.8	2.3	6.4	1.4	53.6	6.7	39.7	0.088	0.500	27.730836	-105.197889
Saucillo	111.50	3	1	3449	0.4	58.2	5.2	8.9	1.7	17.5	2.9	3.9	1.3	58.6	5.2	36.2	0.085	0.502	28.036009	-105.324947
Saucillo	111.50	3	2	3475	0.5	54.7	5.8	9.5	1.9	18.7	3.3	4.3	1.3	55.2	5.8	39.0	0.080	0.502	28.036014	-105.324944

CHIHUAHUA

20 CARR: Camargo - Delicias (Cuota)

CLAVE: 08418

RUTA: MEX-045D

AÑO: 2013

LUGAR	ESTACION				CLASIFICACION VEHICULAR EN PORCIENTO													COORDENADAS		
	KM	TE	SC	TDPA	M	A	B	C2	C3	T3S2	T3S3	T3S2R4	OTROS	A	B	C	K'	D	LATITUD	LONGITUD
Caseta de Cobro Saucillo	116.30	2	1	3131	0.0	57.7	6.0	5.5	3.0	19.5	2.3	4.8	1.2	57.7	6.0	36.3	0.088	0.500	28.046373	-105.329355
Caseta de Cobro Saucillo	116.30	2	2	3131	0.0	57.7	6.0	5.5	3.0	19.5	2.3	4.8	1.2	57.7	6.0	36.3	0.088	0.500	28.046373	-105.329355
Delicias	138.00	1	1	8160	1.2	70.3	3.2	10.4	2.0	8.2	1.9	2.0	0.8	71.5	3.2	25.3	0.076	0.505	28.172721	-105.442109
Delicias	138.00	1	2	8004	0.9	67.8	3.4	11.4	2.3	9.1	2.1	2.1	0.9	68.7	3.4	27.9	0.074	0.505	28.172721	-105.442109

21 CARR: Chihuahua - Sacramento (Cuota)

CLAVE: 08015

RUTA: MEX-045D

AÑO: 2013

LUGAR	ESTACION				CLASIFICACION VEHICULAR EN PORCIENTO													COORDENADAS		
	KM	TE	SC	TDPA	M	A	B	C2	C3	T3S2	T3S3	T3S2R4	OTROS	A	B	C	K'	D	LATITUD	LONGITUD
T. C. Chihuahua - El Sueco	0.00	3	1	6376	1.0	73.4	4.5	9.5	1.5	7.1	1.0	1.4	0.6	74.4	4.5	21.1	0.079	0.548	28.771589	-106.171329
T. C. Chihuahua - El Sueco	0.00	3	2	5261	0.7	69.8	5.4	11.3	1.7	7.8	1.1	1.5	0.7	70.5	5.4	24.1	0.129	0.548	28.771589	-106.171329
Francisco Villa	2.00	3	1	3707	0.5	70.3	4.4	10.0	2.0	8.6	1.4	1.9	0.9	70.8	4.4	24.8	0.090	0.506	28.818714	-106.181749
Francisco Villa	2.00	3	2	3615	0.6	67.1	5.3	10.9	2.1	9.2	1.6	2.1	1.1	67.7	5.3	27.0	0.154	0.506	28.818714	-106.181749
T. C. (Chihuahua - El Sueco)	13.00																			

22 CARR: El Sueco - Villa Ahumada (Cuota)

CLAVE: 08420

RUTA: MEX-045D

AÑO: 2013

LUGAR	ESTACION				CLASIFICACION VEHICULAR EN PORCIENTO													COORDENADAS		
	KM	TE	SC	TDPA	M	A	B	C2	C3	T3S2	T3S3	T3S2R4	OTROS	A	B	C	K'	D	LATITUD	LONGITUD
Ent. El Sueco	0.00	3	1	2501	0.6	61.0	6.7	8.7	1.7	16.2	1.7	2.0	1.4	61.6	6.7	31.7	0.097	0.515	29.895260	-106.395442
Ent. El Sueco	0.00	3	2	2652	0.7	56.3	7.7	10.0	1.8	17.9	1.8	2.2	1.6	57.0	7.7	35.3	0.091	0.515	29.895260	-106.395442
Caseta de Cobro Villa Ahumada	82.00	2	1	2545	0.0	67.5	5.7	4.5	1.9	16.8	0.6	2.1	0.9	67.5	5.7	26.8	0.103	0.500	30.437092	-106.521816
Caseta de Cobro Villa Ahumada	82.00	2	2	2545	0.0	67.5	5.7	4.5	1.9	16.8	0.6	2.1	0.9	67.5	5.7	26.8	0.103	0.500	30.437092	-106.521816
Villa Ahumada	83.63																			

23 CARR: Gómez Palacio - Corralitos (Cuota)

CLAVE: 00016

RUTA: MEX-049D

AÑO: 2013

LUGAR	ESTACION				CLASIFICACION VEHICULAR EN PORCIENTO													COORDENADAS		
	KM	TE	SC	TDPA	M	A	B	C2	C3	T3S2	T3S3	T3S2R4	OTROS	A	B	C	K'	D	LATITUD	LONGITUD
T. C. Gómez Palacio - Jiménez (Libre)	0.00																			
T. Izq. Bermejillo	2.21	1	1	1648	1.8	45.5	10.2	6.6	3.1	19.4	4.9	7.2	1.3	47.3	10.2	42.5	0.059	0.507	25.880555	-103.611510
T. Izq. Bermejillo	2.21	1	2	1695	1.1	41.6	10.5	7.7	3.3	21.1	5.1	8.0	1.6	42.7	10.5	46.8	0.061	0.507	25.880556	-103.611511
T. Izq. Bermejillo	2.21	3	1	1600	1.0	42.3	8.2	7.7	2.7	23.5	5.0	8.3	1.3	43.3	8.2	48.5	0.064	0.501	25.897499	-103.612137
T. Izq. Bermejillo	2.21	3	2	1629	0.6	38.3	8.2	7.9	2.9	25.3	5.6	9.8	1.4	38.9	8.2	52.9	0.068	0.501	25.897498	-103.612136
Caseta de Cobro Bermejillo	5.00	2	1	1371	0.1	38.3	15.5	2.3	1.5	25.2	4.7	10.6	1.8	38.4	15.5	46.1	0.079	0.500	25.923654	-103.622041

CHIHUAHUA

23 CARR: Gómez Palacio - Corralitos (Cuota)

CLAVE: 00016

RUTA: MEX-049D

AÑO: 2013

LUGAR	ESTACION				CLASIFICACION VEHICULAR EN PORCIENTO														COORDENADAS	
	KM	TE	SC	TDPA	M	A	B	C2	C3	T3S2	T3S3	T3S2R4	OTROS	A	B	C	K'	D	LATITUD	LONGITUD
Caseta de Cobro Bermejillo	5.00	2	2	1371	0.1	38.3	15.5	2.3	1.5	25.2	4.7	10.6	1.8	38.4	15.5	46.1	0.079	0.500	25.923654	-103.622041
Caseta de Cobro Ceballos	89.00	2	1	1348	0.1	37.6	14.9	2.6	1.9	25.5	4.8	10.8	1.8	37.7	14.9	47.4	0.079	0.500	26.586790	-104.057602
Caseta de Cobro Ceballos	89.00	2	2	1348	0.1	37.6	14.9	2.6	1.9	25.5	4.8	10.8	1.8	37.7	14.9	47.4	0.079	0.500	26.586790	-104.057602
Lim. Edos. Term. Dgo. Ppia. Chih.	112.00																			
T. C. Libramiento Jiménez	150.59																			
T. C. Gómez Palacio - Jiménez (Libre)	194.00	1	1	1489	0.6	41.0	10.6	7.7	2.9	22.5	4.7	8.7	1.3	41.6	10.6	47.8	0.079	0.516	27.087404	-104.849244
T. C. Gómez Palacio - Jiménez (Libre)	194.00	1	2	1584	1.0	35.7	11.1	8.1	3.0	25.4	5.4	9.0	1.3	36.7	11.1	52.2	0.110	0.516	27.087409	-104.849230

24 CARR: Jiménez - Camargo (Cuota)

CLAVE: 08418

RUTA: MEX-045D

AÑO: 2013

LUGAR	ESTACION				CLASIFICACION VEHICULAR EN PORCIENTO														COORDENADAS	
	KM	TE	SC	TDPA	M	A	B	C2	C3	T3S2	T3S3	T3S2R4	OTROS	A	B	C	K'	D	LATITUD	LONGITUD
Jiménez	0.00	3	1	2739	1.2	48.7	7.1	8.7	2.3	21.6	3.2	6.0	1.2	49.9	7.1	43.0	0.061	0.503	27.150843	-104.930313
Jiménez	0.00	3	2	2778	1.3	43.6	8.2	9.1	2.4	24.1	3.7	6.3	1.3	44.9	8.2	46.9	0.070	0.503	27.150841	-104.930312
Caseta de Cobro Camargo	11.00	2	1	1979	0.0	41.3	7.6	5.5	4.0	28.6	3.6	7.4	2.0	41.3	7.6	51.1	0.085	0.500	27.244998	-104.933231
Caseta de Cobro Camargo	11.00	2	2	1979	0.0	41.3	7.6	5.5	4.0	28.6	3.6	7.4	2.0	41.3	7.6	51.1	0.085	0.500	27.244998	-104.933231
Camargo	68.98	1	1	3237	1.0	52.1	6.8	10.6	2.3	18.8	3.0	4.6	0.8	53.1	6.8	40.1	0.075	0.506	27.654966	-105.148492
Camargo	68.98	1	2	3317	0.8	47.0	7.1	11.7	2.5	21.5	3.5	4.9	1.0	47.8	7.1	45.1	0.077	0.506	27.654966	-105.148493

25 CARR: Ahumada - Ricardo Flores Magón

CLAVE: 08804

RUTA: CHIH

AÑO: 2013

LUGAR	ESTACION				CLASIFICACION VEHICULAR EN PORCIENTO														COORDENADAS	
	KM	TE	SC	TDPA	M	A	B	C2	C3	T3S2	T3S3	T3S2R4	OTROS	A	B	C	K'	D	LATITUD	LONGITUD
Ahumada	0.00	3	0	1801	0.7	59.7	3.0	15.4	2.7	14.4	2.4	1.2	0.5	60.4	3.0	36.6	0.076	0.507	30.616168	-106.529786
Ricardo Flores Magón	96.00	1	0	1922	0.1	64.2	2.5	15.6	2.1	12.2	2.4	0.5	0.4	64.3	2.5	33.2	0.098	0.521	29.958270	-106.952069

26 CARR: Cuauhtémoc - Buenaventura

CLAVE: 08015

RUTA: CHIH

AÑO: 2013

LUGAR	ESTACION				CLASIFICACION VEHICULAR EN PORCIENTO														COORDENADAS	
	KM	TE	SC	TDPA	M	A	B	C2	C3	T3S2	T3S3	T3S2R4	OTROS	A	B	C	K'	D	LATITUD	LONGITUD
T. C. Chihuahua - Madera	0.00	3	1	8299	0.9	77.1	0.6	14.8	1.3	2.0	1.9	0.4	1.0	78.0	0.6	21.4	0.090	0.507	28.435152	-106.908860
T. C. Chihuahua - Madera	0.00	3	2	8072	0.9	74.8	0.6	16.5	1.4	2.4	2.0	0.4	1.0	75.7	0.6	23.7	0.086	0.507	28.435151	-106.908859
Álvaro Obregón	42.00	3	1	3583	0.2	74.7	3.2	14.5	1.8	3.4	1.4	0.4	0.4	74.9	3.2	21.9	0.076	0.508	28.759909	-106.928952
Álvaro Obregón	42.00	3	2	3468	0.1	71.5	3.8	17.0	1.9	3.5	1.5	0.3	0.4	71.6	3.8	24.6	0.077	0.508	28.759910	-106.928952
Bachiniva	77.50	1	0	4617	0.7	73.7	4.5	12.9	1.6	3.0	2.0	0.4	1.2	74.4	4.5	21.1	0.066	0.502	28.810597	-107.216569

CHIHUAHUA

26 CARR: Cuauhtémoc - Buenaventura

CLAVE: 08015

RUTA: CHIH

AÑO: 2013

LUGAR	ESTACION				CLASIFICACION VEHICULAR EN PORCIENTO													COORDENADAS		
	KM	TE	SC	TDPA	M	A	B	C2	C3	T3S2	T3S3	T3S2R4	OTROS	A	B	C	K'	D	LATITUD	LONGITUD
T. Der. Namiquipa	112.06	3	0	3631	0.1	74.8	4.5	14.2	1.1	3.4	1.2	0.3	0.4	74.9	4.5	20.6	0.071	0.501	29.026850	-107.451546
T. Izq. Madera	150.50	3	0	615	0.0	77.6	4.5	11.1	2.6	3.2	0.8	0.1	0.1	77.6	4.5	17.9	0.094	0.507	29.265104	-107.707736
Buenaventura	253.30	1	0	793	0.8	73.4	3.5	15.8	1.5	3.9	1.0	0.0	0.1	74.2	3.5	22.3	0.168	0.511	29.841584	-107.478933

27 CARR: Delicias - Saucillo

CLAVE: 08007

RUTA: CHIH-007

AÑO: 2013

LUGAR	ESTACION				CLASIFICACION VEHICULAR EN PORCIENTO													COORDENADAS		
	KM	TE	SC	TDPA	M	A	B	C2	C3	T3S2	T3S3	T3S2R4	OTROS	A	B	C	K'	D	LATITUD	LONGITUD
Delicias	0.00	3	0	6099	6.7	75.5	1.6	8.6	1.9	3.0	1.2	0.5	1.0	82.2	1.6	16.2	0.080	0.501	28.195055	-105.426180
Las Varas	17.00	1	0	2728	3.8	73.2	1.7	15.3	2.0	2.1	1.0	0.2	0.7	77.0	1.7	21.3	0.083	0.511	28.168895	-105.339068
Saucillo	33.00	1	0	6016	2.6	77.4	1.4	9.3	1.4	6.0	0.8	0.4	0.7	80.0	1.4	18.6	0.063	0.510	28.047142	-105.300194

28 CARR: Ent. Peña Blanca - Ent. La Concha

CLAVE: 08493

RUTA: CHIH

AÑO: 2013

LUGAR	ESTACION				CLASIFICACION VEHICULAR EN PORCIENTO													COORDENADAS		
	KM	TE	SC	TDPA	M	A	B	C2	C3	T3S2	T3S3	T3S2R4	OTROS	A	B	C	K'	D	LATITUD	LONGITUD
T. C. Cuauhtémoc - Buenaventura	0.00	3	0	970	0.1	79.2	1.6	13.8	1.5	2.9	0.7	0.0	0.2	79.3	1.6	19.1	0.095	0.503	29.263611	-107.708333
T. C. Chihuahua - Madera	17.00	1	0	870	0.3	78.5	1.3	13.8	1.7	3.8	0.4	0.0	0.2	78.8	1.3	19.9	0.097	0.513	29.122035	-107.905842

29 CARR: Ent. Puerto Justo - Ent. Guacho chic

CLAVE: 08044

RUTA: CHIH

AÑO: 2013

LUGAR	ESTACION				CLASIFICACION VEHICULAR EN PORCIENTO													COORDENADAS		
	KM	TE	SC	TDPA	M	A	B	C2	C3	T3S2	T3S3	T3S2R4	OTROS	A	B	C	K'	D	LATITUD	LONGITUD
T. C. Hidalgo del Parral - Pto. Sabiná	0.00	3	0	284	1.0	84.3	0.8	9.2	1.9	1.2	0.6	0.7	0.3	85.3	0.8	13.9	0.113	0.516	26.814439	-106.019390
Guacho chic	130.00																			

30 CARR: Jiménez - Camargo

CLAVE: 08021

RUTA: CHIH-049

AÑO: 2013

LUGAR	ESTACION				CLASIFICACION VEHICULAR EN PORCIENTO													COORDENADAS		
	KM	TE	SC	TDPA	M	A	B	C2	C3	T3S2	T3S3	T3S2R4	OTROS	A	B	C	K'	D	LATITUD	LONGITUD
Jiménez	0.00	3	0	3635	2.6	69.2	1.6	13.7	2.5	7.4	1.7	0.5	0.8	71.8	1.6	26.6	0.086	0.504	27.147851	-104.897736
T. Der. Ojinaga	65.80	3	0	2003	0.2	59.8	3.1	17.2	3.3	12.2	2.7	0.6	0.9	60.0	3.1	36.9	0.078	0.512	27.648277	-105.078276
T. C. Jiménez - Chihuahua (Cuota)	78.20	1	0	6871	1.3	56.4	2.9	10.4	2.1	18.0	3.1	4.0	1.8	57.7	2.9	39.4	0.075	0.515	27.676971	-105.144274

CHIHUAHUA

31 CARR: Lázaro Cárdenas - Ent. Colonia San José

CLAVE: 08004

RUTA: CHIH-004

AÑO: 2013

LUGAR	ESTACION				CLASIFICACION VEHICULAR EN PORCIENTO										COORDENADAS					
	KM	TE	SC	TDPA	M	A	B	C2	C3	T3S2	T3S3	T3S2R4	OTROS	A	B	C	K'	D	LATITUD	LONGITUD
T. C. Jiménez - Chihuahua	0.00	3	1	2567	3.6	83.3	2.9	7.1	1.0	1.1	0.8	0.1	0.1	86.9	2.9	10.2	0.082	0.530	28.387899	-105.627788
T. C. Jiménez - Chihuahua	0.00	3	2	2896	2.3	83.6	3.2	7.9	0.9	1.1	0.8	0.1	0.1	85.9	3.2	10.9	0.087	0.530	28.387897	-105.627776
T. C. Meoqui - Julimes	16.00	1	0	1726	2.2	77.1	3.0	11.3	2.8	2.2	0.9	0.2	0.3	79.3	3.0	17.7	0.091	0.507	28.387773	-105.449754

32 CARR: Libramiento de Hidalgo del Parral

CLAVE: 08221

RUTA: CHIH

AÑO: 2013

LUGAR	ESTACION				CLASIFICACION VEHICULAR EN PORCIENTO										COORDENADAS					
	KM	TE	SC	TDPA	M	A	B	C2	C3	T3S2	T3S3	T3S2R4	OTROS	A	B	C	K'	D	LATITUD	LONGITUD
T. C. Hidalgo del Parral - Santa Bárbara	0.00																			
T. C. Ent. La Zarca - Hidalgo del Parral	8.00	3	1	4815	0.6	88.9	2.0	5.6	0.4	1.3	0.8	0.1	0.3	89.5	2.0	8.5	0.086	0.520	26.922978	-105.643950
T. C. Ent. La Zarca - Hidalgo del Parral	8.00	3	2	5212	1.3	87.6	2.2	5.9	0.4	1.3	0.9	0.1	0.3	88.9	2.2	8.9	0.116	0.520	26.922980	-105.643955
T. C. Hidalgo del Parral - Jiménez	10.00																			

33 CARR: Libramiento de Jiménez

CLAVE: 08047

RUTA: CHIH

AÑO: 2013

LUGAR	ESTACION				CLASIFICACION VEHICULAR EN PORCIENTO										COORDENADAS					
	KM	TE	SC	TDPA	M	A	B	C2	C3	T3S2	T3S3	T3S2R4	OTROS	A	B	C	K'	D	LATITUD	LONGITUD
T. C. Gómez Palacio - Jiménez	0.00	3	1	5303	2.0	65.7	3.2	7.7	2.0	12.2	3.3	2.9	1.0	67.7	3.2	29.1	0.065	0.547	27.133530	-104.909236
T. C. Gómez Palacio - Jiménez	0.00	3	2	6383	2.0	62.4	3.4	8.5	2.2	13.5	3.6	3.3	1.1	64.4	3.4	32.2	0.061	0.547	27.133541	-104.909243
T. C. Jiménez - Chihuahua (Cuota)	3.40	1	1	3382	1.0	57.5	5.8	8.3	2.3	16.0	3.7	4.4	1.0	58.5	5.8	35.7	0.082	0.502	27.141932	-104.923256
T. C. Jiménez - Chihuahua (Cuota)	3.40	1	2	3416	0.7	54.3	6.1	9.6	2.7	16.8	4.1	4.8	0.9	55.0	6.1	38.9	0.089	0.502	27.141967	-104.923311

34 CARR: Meoqui - Julimes

CLAVE: 08005

RUTA: CHIH-005

AÑO: 2013

LUGAR	ESTACION				CLASIFICACION VEHICULAR EN PORCIENTO										COORDENADAS					
	KM	TE	SC	TDPA	M	A	B	C2	C3	T3S2	T3S3	T3S2R4	OTROS	A	B	C	K'	D	LATITUD	LONGITUD
Meoqui	0.00	3	0	5175	2.6	78.9	2.7	8.5	1.2	3.5	1.0	0.5	1.1	81.5	2.7	15.8	0.074	0.502	28.285955	-105.460890
Loreto	8.00	3	0	3727	2.1	78.5	1.5	12.0	1.2	2.7	0.6	0.3	1.1	80.6	1.5	17.9	0.079	0.501	28.322167	-105.433465
Regina	15.40	3	0	3314	1.6	83.3	2.4	8.9	1.4	0.8	0.6	0.5	0.5	84.9	2.4	12.7	0.087	0.508	28.421130	-105.454269
Julimes	23.00	1	0	2824	1.7	79.4	3.5	10.3	1.1	1.8	1.0	0.5	0.7	81.1	3.5	15.4	0.075	0.534	28.427476	-105.441380

CHIHUAHUA

35 CARR: Ramal a Creel

CLAVE: 08812

RUTA: CHIH

AÑO: 2013

LUGAR	ESTACION				CLASIFICACION VEHICULAR EN PORCIENTO														COORDENADAS	
	KM	TE	SC	TDPA	M	A	B	C2	C3	T3S2	T3S3	T3S2R4	OTROS	A	B	C	K'	D	LATITUD	LONGITUD
T. C. La Junta - Yepachi	0.00	3	0	1784	0.3	73.0	2.1	16.5	2.7	2.6	1.4	0.5	0.9	73.3	2.1	24.6	0.110	0.506	28.381104	-107.441368
San Juanito	58.00	3	0	1628	0.8	71.6	2.0	17.2	2.3	2.9	1.4	0.7	1.1	72.4	2.0	25.6	0.091	0.501	27.960205	-107.606753
Creel	85.00																			

36 CARR: San Juanito - Ent. Basaseachi

CLAVE: 08045

RUTA: CHIH

AÑO: 2013

LUGAR	ESTACION				CLASIFICACION VEHICULAR EN PORCIENTO														COORDENADAS	
	KM	TE	SC	TDPA	M	A	B	C2	C3	T3S2	T3S3	T3S2R4	OTROS	A	B	C	K'	D	LATITUD	LONGITUD
San Juanito	0.00	3	0	489	0.3	65.8	0.5	27.6	2.5	2.0	0.9	0.3	0.1	66.1	0.5	33.4	0.117	0.508	27.972240	-107.616425
T. C. La Junta - Yécora	84.00	1	0	440	1.0	63.7	1.0	29.7	2.6	1.1	0.5	0.0	0.4	64.7	1.0	34.3	0.148	0.502	28.189412	-108.172753

37 CARR: T. C. (Jiménez - Camargo) - Ojinaga

CLAVE: 08009

RUTA: CHIH-018

AÑO: 2013

LUGAR	ESTACION				CLASIFICACION VEHICULAR EN PORCIENTO														COORDENADAS	
	KM	TE	SC	TDPA	M	A	B	C2	C3	T3S2	T3S3	T3S2R4	OTROS	A	B	C	K'	D	LATITUD	LONGITUD
T. C. Jiménez - Camargo	0.00	3	0	820	1.0	62.0	2.9	15.7	2.6	10.3	2.7	2.5	0.3	63.0	2.9	34.1	0.089	0.507	27.649996	-105.070380
T. Der. La Perla	97.00	3	0	379	0.3	56.5	2.1	14.2	2.0	19.8	4.2	0.5	0.4	56.8	2.1	41.1	0.121	0.514	28.307938	-104.573131
T. Der. Majjoma	174.20	3	0	343	0.0	61.1	2.4	18.7	3.0	10.2	4.2	0.0	0.4	61.1	2.4	36.5	0.114	0.530	28.929088	-104.479174
T. Der. Manuel Benavides	218.00	3	0	1423	0.1	72.2	2.3	19.1	1.2	3.2	1.1	0.4	0.4	72.3	2.3	25.4	0.112	0.521	29.316751	-104.400404
Ojinaga	247.00	1	0	1828	0.2	76.4	3.2	15.0	1.1	2.7	0.8	0.2	0.4	76.6	3.2	20.2	0.137	0.504	29.517121	-104.422595

38 CARR: T. Julimes - La Boquilla

CLAVE: 08009

RUTA: CHIH-018

AÑO: 2013

LUGAR	ESTACION				CLASIFICACION VEHICULAR EN PORCIENTO														COORDENADAS	
	KM	TE	SC	TDPA	M	A	B	C2	C3	T3S2	T3S3	T3S2R4	OTROS	A	B	C	K'	D	LATITUD	LONGITUD
T. C. Meoquí - Julimes	0.00	3	0	1308	1.6	78.9	3.3	12.4	1.2	1.8	0.7	0.0	0.1	80.5	3.3	16.2	0.089	0.505	28.428102	-105.456605
La Boquilla	7.50																			

39 CARR: Ent. El Álamo - Ent. Ricardo Flores Magón (Cuota)

CLAVE: 08046

RUTA: CHIH-D

AÑO: 2013

LUGAR	ESTACION				CLASIFICACION VEHICULAR EN PORCIENTO														COORDENADAS	
	KM	TE	SC	TDPA	M	A	B	C2	C3	T3S2	T3S3	T3S2R4	OTROS	A	B	C	K'	D	LATITUD	LONGITUD
T. C. Chihuahua - El Sueco	0.00	3	0	1712	0.8	40.5	5.7	10.2	2.7	26.8	5.3	6.8	1.2	41.3	5.7	53.0	0.100	0.505	29.481537	-106.406444
T. C. El Sueco - Janos	75.00																			

CHIHUAHUA

40 CARR: Ricardo Flores Magón - Galeana (Cuota)

CLAVE: 08019

RUTA: CHIH-D

AÑO: 2013

LUGAR	ESTACION				CLASIFICACION VEHICULAR EN PORCIENTO														COORDENADAS	
	KM	TE	SC	TDPA	M	A	B	C2	C3	T3S2	T3S3	T3S2R4	OTROS	A	B	C	K'	D	LATITUD	LONGITUD
T. C. El Sueco - Janos	0.00	3	0	2090	0.2	38.9	4.2	13.5	2.5	27.5	5.6	6.5	1.1	39.1	4.2	56.7	0.083	0.506	29.969086	-107.069165
Galeana	58.00	1	0	2182	0.6	43.7	3.9	12.6	2.1	23.7	5.5	6.3	1.6	44.3	3.9	51.8	0.071	0.503	30.175364	-107.618334

41 CARR: Samalayuca - San Jerónimo (Cuota)

CLAVE: 08019

RUTA: CHIH-D

AÑO: 2013

LUGAR	ESTACION				CLASIFICACION VEHICULAR EN PORCIENTO														COORDENADAS	
	KM	TE	SC	TDPA	M	A	B	C2	C3	T3S2	T3S3	T3S2R4	OTROS	A	B	C	K'	D	LATITUD	LONGITUD
T. C. El Sueco - Cd. Juárez	0.00	3	0	931	0.2	69.1	8.7	16.9	4.3	0.3	0.1	0.2	0.2	69.3	8.7	22.0	0.143	0.523	31.453225	-106.477728
San Jerónimo	28.10																			

42 CARR: T. C. (Chihuahua - Ojinaga) - La Mula (Cuota)

CLAVE: 08170

RUTA: CHIH-D

AÑO: 2013

LUGAR	ESTACION				CLASIFICACION VEHICULAR EN PORCIENTO														COORDENADAS	
	KM	TE	SC	TDPA	M	A	B	C2	C3	T3S2	T3S3	T3S2R4	OTROS	A	B	C	K'	D	LATITUD	LONGITUD
T. C. Chihuahua - Ojinaga	0.00	3	0	999	0.1	74.3	3.5	12.9	1.9	3.7	1.9	1.0	0.7	74.4	3.5	22.1	0.086	0.504	29.146057	-105.486055
La Mula	110.00	1	0	826	0.1	82.7	2.0	7.7	1.6	3.4	0.9	0.9	0.7	82.8	2.0	15.2	0.099	0.506	29.180684	-104.473142

43 CARR: Chihuahua - Madera

CLAVE: 08038

RUTA: CHIH-D-MEX-001-CHIH

AÑO: 2013

LUGAR	ESTACION				CLASIFICACION VEHICULAR EN PORCIENTO														COORDENADAS	
	KM	TE	SC	TDPA	M	A	B	C2	C3	T3S2	T3S3	T3S2R4	OTROS	A	B	C	K'	D	LATITUD	LONGITUD
Chihuahua	0.00																			
T. Der. Presa Chihuahua	10.50	1	1	9143	0.5	79.0	1.8	10.7	1.7	3.3	1.8	0.5	0.7	79.5	1.8	18.7	0.080	0.504	28.569311	-106.141828
T. Der. Presa Chihuahua	10.50	1	2	9002	0.7	76.7	2.0	12.0	1.7	3.5	2.1	0.5	0.8	77.4	2.0	20.6	0.144	0.504	28.569311	-106.141828
T. Der. Presa Chihuahua	10.50	3	1	6717	1.0	75.6	2.1	11.7	1.7	4.2	2.1	0.7	0.9	76.6	2.1	21.3	0.078	0.507	28.549537	-106.159300
T. Der. Presa Chihuahua	10.50	3	2	6913	0.5	74.1	2.3	12.4	1.9	4.9	2.2	0.7	1.0	74.6	2.3	23.1	0.093	0.507	28.549537	-106.159299
T. Izq. Hidalgo del Parral (Vía Corta)	36.20	1	1	5426	0.4	75.2	2.4	12.1	1.7	4.9	2.0	0.7	0.6	75.6	2.4	22.0	0.091	0.503	28.375623	-106.248567
T. Izq. Hidalgo del Parral (Vía Corta)	36.20	1	2	5358	0.4	72.0	2.7	13.9	1.9	5.4	2.3	0.8	0.6	72.4	2.7	24.9	0.153	0.503	28.375623	-106.248567
T. Izq. Hidalgo del Parral (Vía Corta)	36.20	3	1	4404	0.3	77.7	1.7	11.2	1.6	4.3	1.9	0.6	0.7	78.0	1.7	20.3	0.092	0.511	28.358833	-106.271452
T. Izq. Hidalgo del Parral (Vía Corta)	36.20	3	2	4209	0.5	76.1	1.8	12.0	1.6	4.5	2.1	0.6	0.8	76.6	1.8	21.6	0.090	0.511	28.358833	-106.271452
Cuahtémoc	103.50	1	1	4699	0.7	78.0	1.9	13.3	1.5	2.9	0.9	0.5	0.3	78.7	1.9	19.4	0.087	0.535	28.396617	-106.810477
Cuahtémoc	103.50	1	2	4092	0.6	76.5	2.0	13.9	1.7	3.4	1.0	0.6	0.3	77.1	2.0	20.9	0.096	0.535	28.396617	-106.810478
Cuahtémoc	103.50	3	1	10118	1.0	82.7	0.5	11.7	0.5	1.4	1.5	0.2	0.5	83.7	0.5	15.8	0.074	0.506	28.402516	-106.891030
Cuahtémoc	103.50	3	2	10362	0.9	82.0	0.5	12.1	0.5	1.6	1.6	0.2	0.6	82.9	0.5	16.6	0.081	0.506	28.402516	-106.891030
T. Der. Álvaro Obregón	107.10	3	1	6256	0.5	74.0	1.7	18.2	1.4	2.3	1.3	0.2	0.4	74.5	1.7	23.8	0.076	0.515	28.399197	-106.925803

CHIHUAHUA

43 CARR: Chihuahua - Madera

CLAVE: 08038

RUTA: CHIH-D-MEX-001-CHIH

AÑO: 2013

LUGAR	ESTACION				CLASIFICACION VEHICULAR EN PORCIENTO													COORDENADAS		
	KM	TE	SC	TDPA	M	A	B	C2	C3	T3S2	T3S3	T3S2R4	OTROS	A	B	C	K'	D	LATITUD	LONGITUD
T. Der. Álvaro Obregón	107.10	3	2	5888	0.3	72.4	1.7	19.4	1.5	2.6	1.5	0.2	0.4	72.7	1.7	25.6	0.070	0.515	28.399210	-106.925835
T. Izq. Yepachi	150.80	1	1	2801	0.6	75.4	1.9	16.8	1.5	2.3	0.9	0.3	0.3	76.0	1.9	22.1	0.101	0.504	28.466129	-107.283494
T. Izq. Yepachi	150.80	1	2	2843	0.2	73.3	2.0	18.7	1.8	2.3	1.1	0.3	0.3	73.5	2.0	24.5	0.109	0.504	28.466131	-107.283506
Guerrero	169.80	3	0	2662	0.5	75.6	1.2	17.1	2.0	2.2	1.0	0.2	0.2	76.1	1.2	22.7	0.082	0.504	28.552457	-107.494329
T. Der. Peña Blanca	261.30	1	0	996	0.1	79.4	2.2	13.2	1.3	2.5	1.0	0.0	0.3	79.5	2.2	18.3	0.097	0.506	29.115191	-107.899998
T. Der. Peña Blanca	261.30	3	0	1070	0.1	76.7	1.9	14.6	1.5	3.3	1.7	0.0	0.2	76.8	1.9	21.3	0.106	0.501	29.119952	-107.907990
Madera	279.00																			

44 CARR: Ent. Agua Caliente - El Terrero

CLAVE: 08170

RUTA: CHIH-MEX

AÑO: 2013

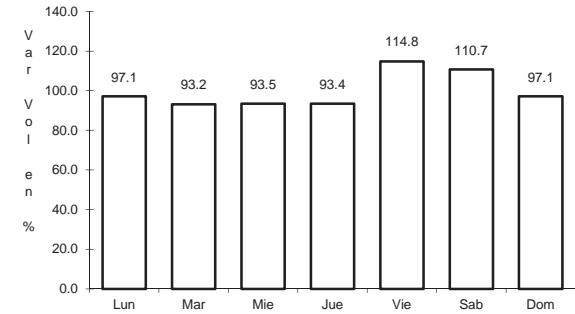
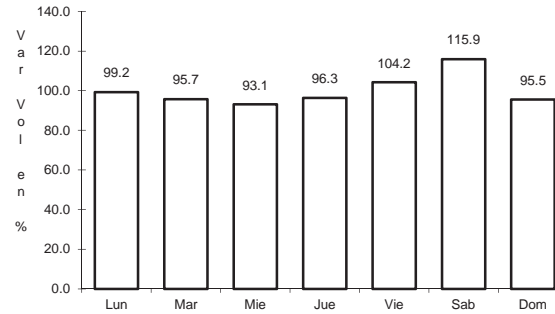
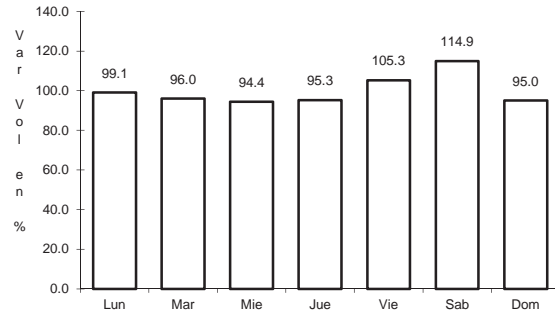
LUGAR	ESTACION				CLASIFICACION VEHICULAR EN PORCIENTO													COORDENADAS		
	KM	TE	SC	TDPA	M	A	B	C2	C3	T3S2	T3S3	T3S2R4	OTROS	A	B	C	K'	D	LATITUD	LONGITUD
T. C. Chihuahua - El Sueco	0.00	3	0	573	0.5	60.9	3.3	26.4	2.2	4.6	1.7	0.1	0.3	61.4	3.3	35.3	0.145	0.507	29.096162	-106.343808
Nuevas Delicias	22.00	1	0	557	0.4	61.0	1.4	27.4	2.2	5.1	1.9	0.3	0.3	61.4	1.4	37.2	0.115	0.509	29.078125	-106.495847
El Terrero	120.00	1	0	945	0.4	79.6	2.5	14.4	0.7	1.7	0.6	0.0	0.1	80.0	2.5	17.5	0.102	0.505	29.178139	-107.375278



1 CARR: Cd. Juárez - Janos

CLAVE: 08041

RUTA: MEX-002



Km: 0.00

Tipo: 3

Sent: 1

Km: 0.00

Tipo: 3

Sent: 2

Km: 205.00

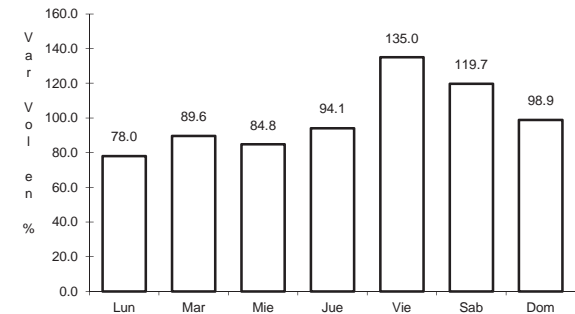
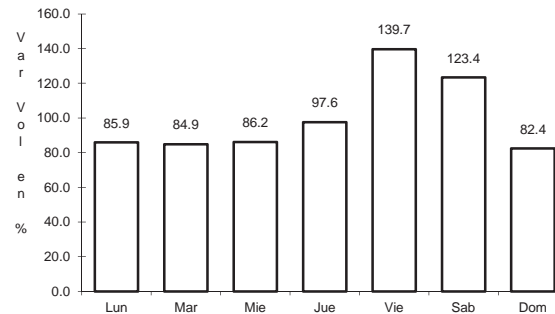
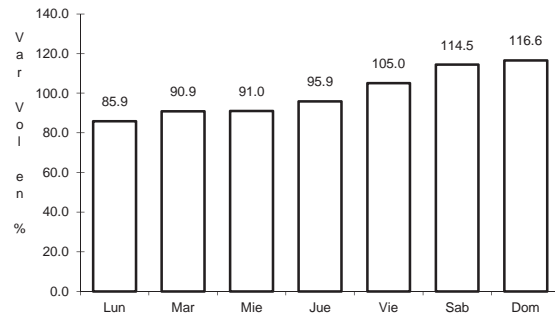
Tipo: 1

Sent: 0

2 CARR: Chihuahua - El Sueco

CLAVE: 08419

RUTA: MEX-045



Km: 24.00

Tipo: 1

Sent: 0

Km: 155.87

Tipo: 1

Sent: 1

Km: 155.87

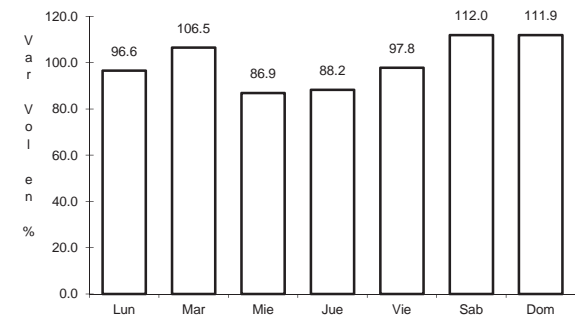
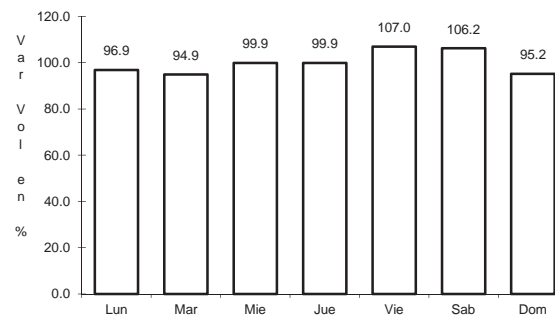
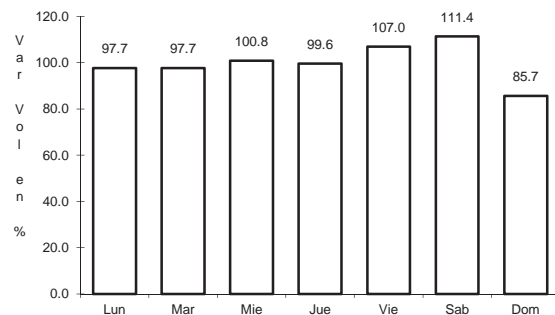
Tipo: 1

Sent: 2

3 CARR: Chihuahua - Ojinaga

CLAVE: 08042

RUTA: MEX-016



Km: 6.50

Tipo: 1

Sent: 1

Km: 6.50

Tipo: 1

Sent: 2

Km: 224.00

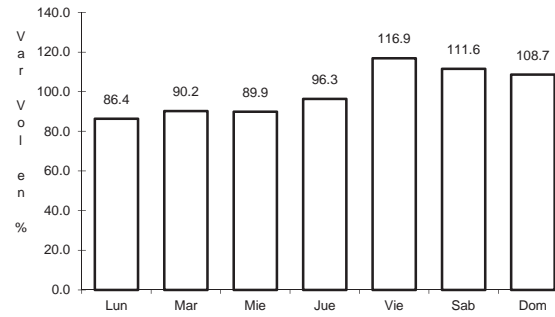
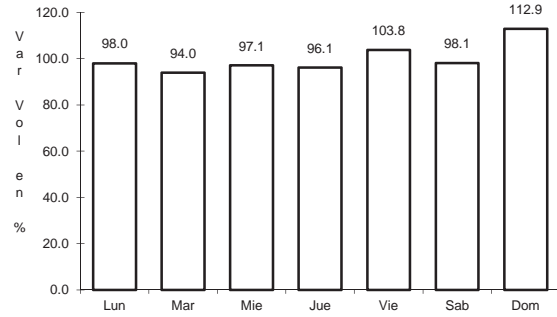
Tipo: 1

Sent: 0

4 CARR: Delicias - Chihuahua (Libre)

CLAVE: 08418

RUTA: MEX-045



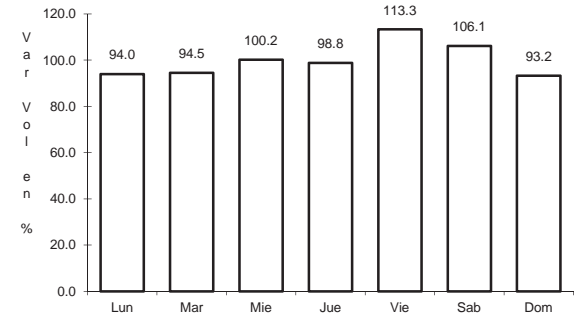
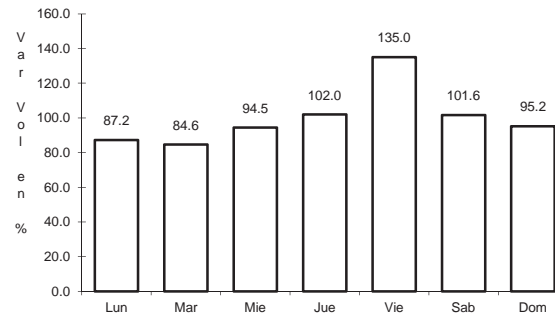
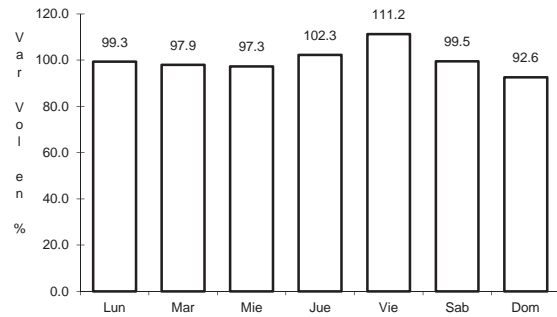
Km: 166.87      Tipo: 1      Sent: 1

Km: 166.87      Tipo: 1      Sent: 2

5 CARR: El Sueco - Janos

CLAVE: 08037

RUTA: MEX-010



Km: 0.00      Tipo: 3      Sent: 0

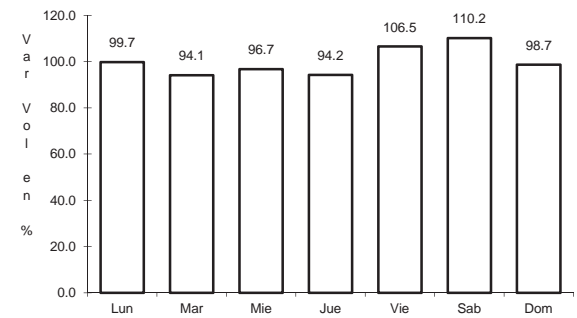
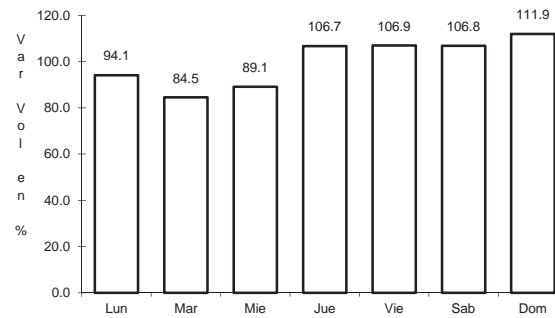
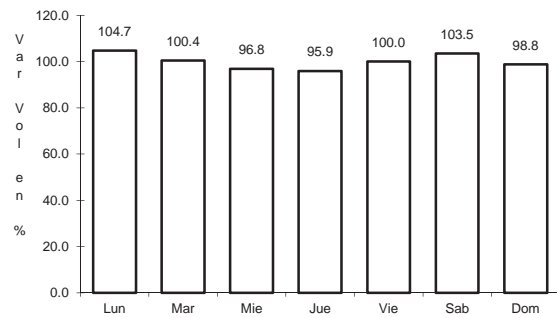
Km: 114.00      Tipo: 1      Sent: 0

Km: 257.00      Tipo: 1      Sent: 0

6 CARR: Ent. Ciudad Camargo - Saucillo

CLAVE: 08417

RUTA: MEX-045



Km: 0.00      Tipo: 3      Sent: 0

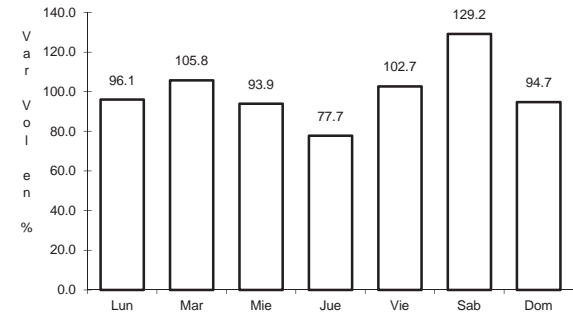
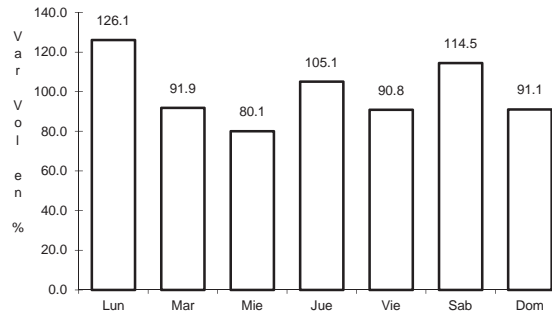
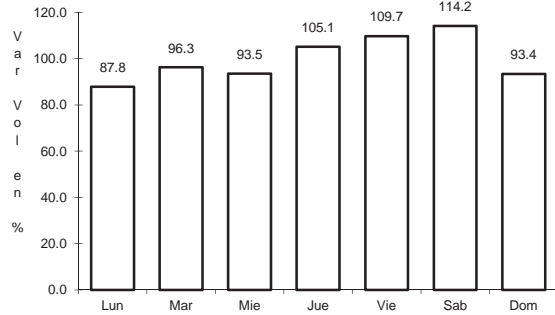
Km: 20.92      Tipo: 3      Sent: 0

Km: 42.52      Tipo: 1      Sent: 0

7 CARR: Ent. La Zarca - Hidalgo del Parral

CLAVE: 00488

ruta: MEX-045



Km: 0.00 Tipo: 3 Sent: 0

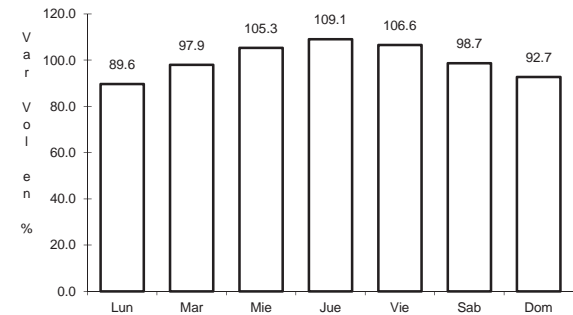
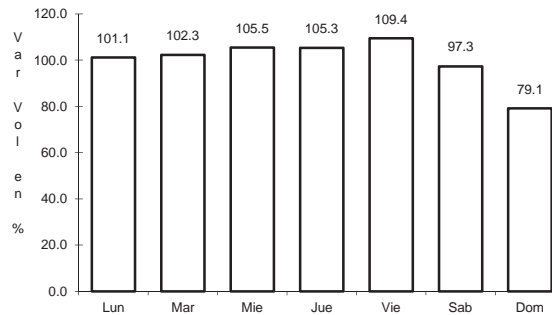
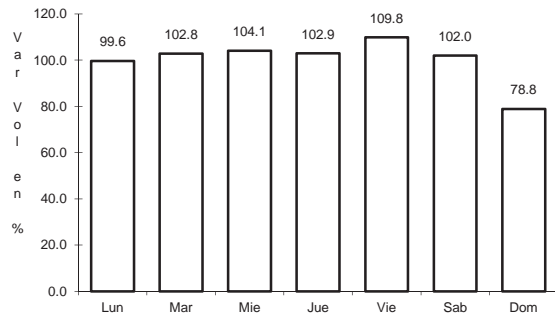
Km: 92.35 Tipo: 3 Sent: 0

Km: 171.00 Tipo: 1 Sent: 0

8 CARR: Gómez Palacio - Jiménez

CLAVE: 00006

ruta: MEX-049



Km: 0.00 Tipo: 3 Sent: 1

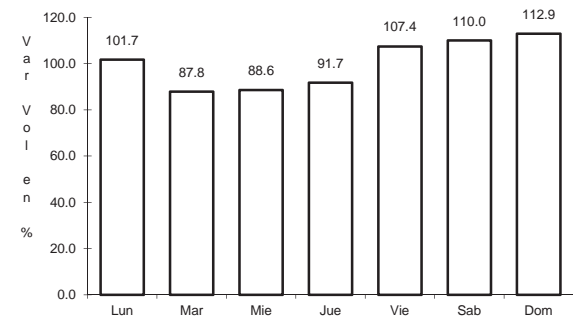
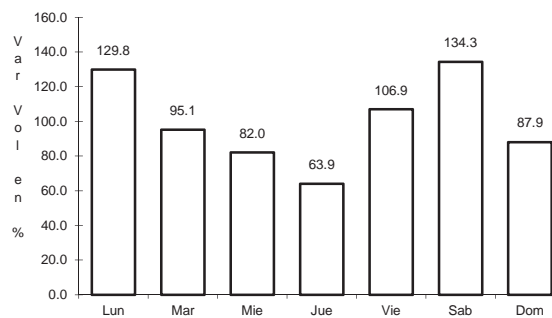
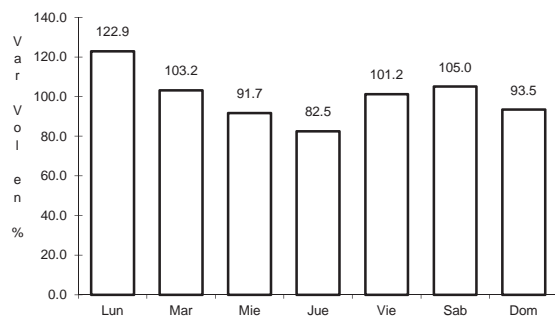
Km: 0.00 Tipo: 3 Sent: 2

Km: 107.95 Tipo: 1 Sent: 0

9 CARR: Hidalgo del Parral - Ent. Nuevo Palomas (Vía Corta)

CLAVE: 08811

ruta: MEX-024



Km: 0.00 Tipo: 3 Sent: 0

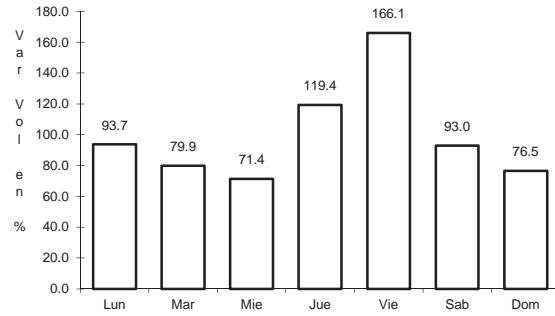
Km: 66.00 Tipo: 1 Sent: 0

Km: 182.40 Tipo: 1 Sent: 0

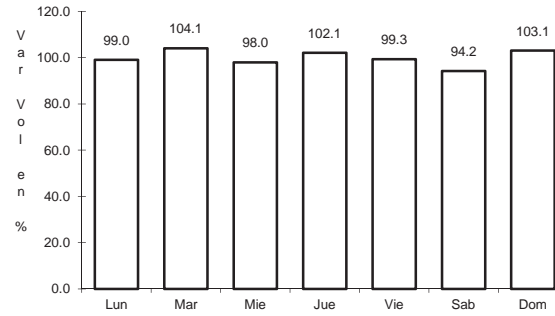
10 CARR: Hidalgo del Parral - Guadalupe y Calvo

CLAVE: 00802

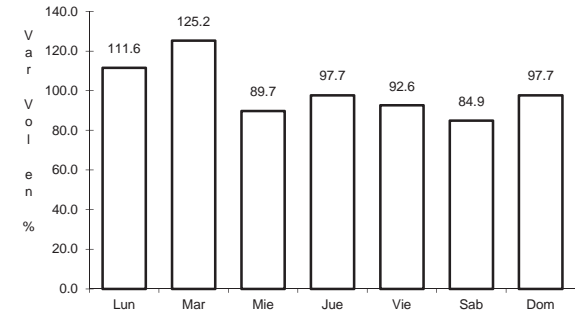
RUTA: MEX-024



Km: 0.00                      Tipo: 3                      Sent: 0



Km: 110.00                      Tipo: 1                      Sent: 0

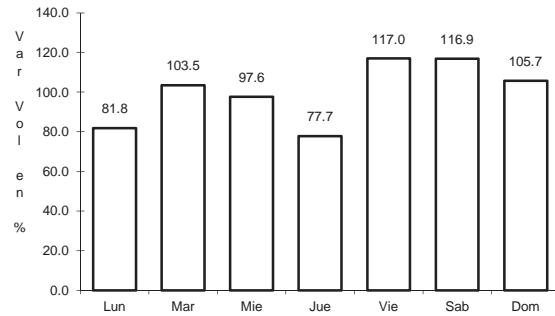


Km: 212.00                      Tipo: 1                      Sent: 0

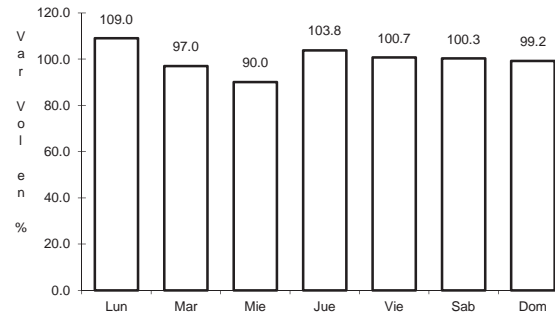
11 CARR: Hidalgo del Parral - Jiménez

CLAVE: 08444

RUTA: MEX-045



Km: 0.00                      Tipo: 3                      Sent: 1

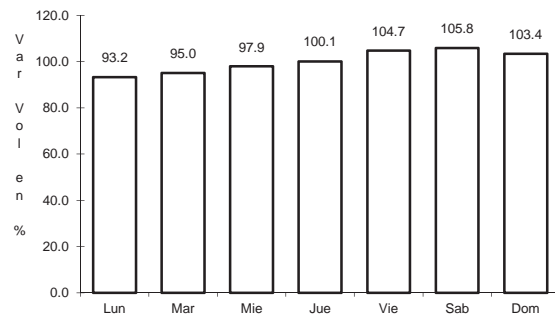


Km: 0.00                      Tipo: 3                      Sent: 2

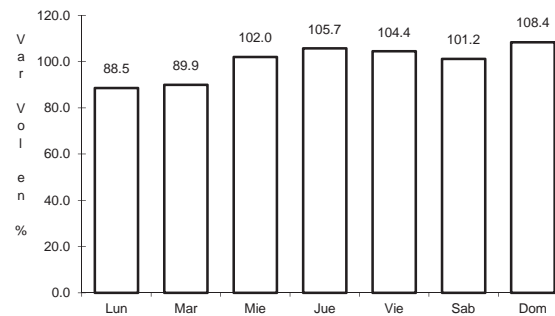
12 CARR: Janos - Agua Prieta

CLAVE: 00220

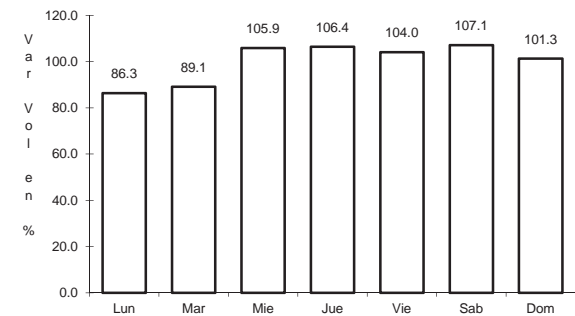
RUTA: MEX-002



Km: 0.00                      Tipo: 3                      Sent: 0



Km: 56.00                      Tipo: 3                      Sent: 0

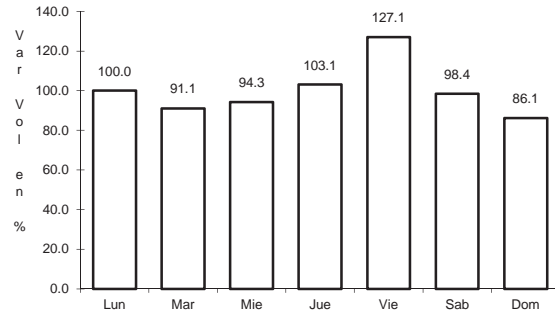


Km: 160.00                      Tipo: 1                      Sent: 0

13 CARR: Jerónimo - Sta. Teresa

CLAVE: 08043

RUTA: MEX-002



Km: 0.00

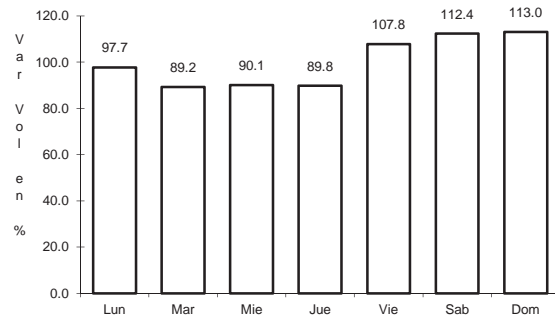
Tipo: 3

Sent: 0

14 CARR: La Junta - Yécora

CLAVE: 00065

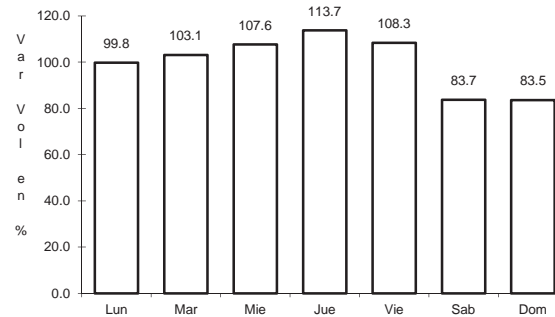
RUTA: MEX-016



Km: 0.00

Tipo: 3

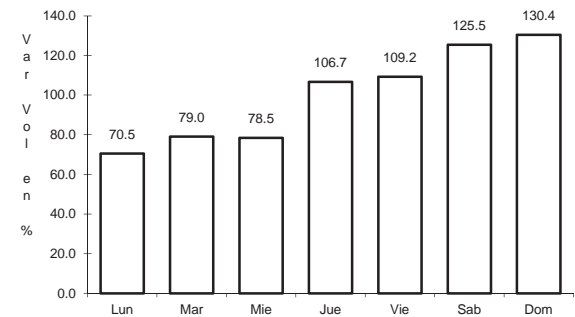
Sent: 0



Km: 70.00

Tipo: 3

Sent: 0



Km: 253.00

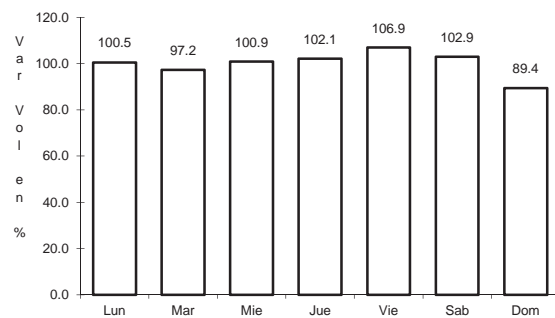
Tipo: 1

Sent: 0

15 CARR: Libramiento de Delicias - Meoqui

CLAVE: 08813

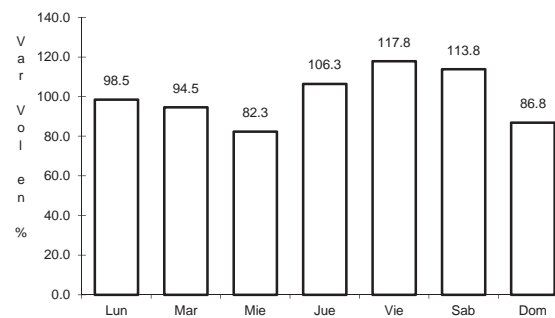
RUTA: MEX-045



Km: 0.00

Tipo: 3

Sent: 1



Km: 0.00

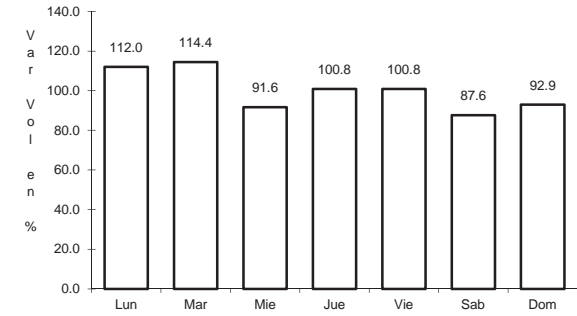
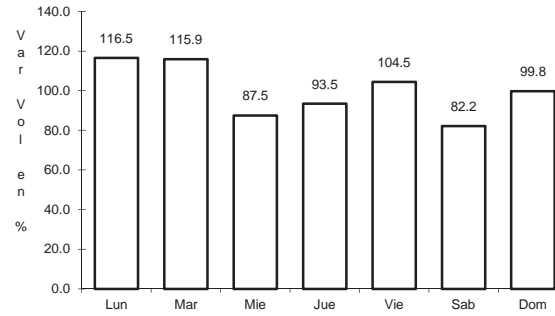
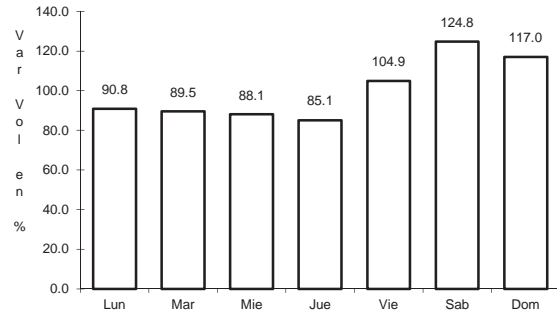
Tipo: 3

Sent: 2

16 CARR: Porvenir - Cd. Juárez

CLAVE: 08169

RUTA: MEX-002



Km: 1.67                      Tipo: 3                      Sent: 0

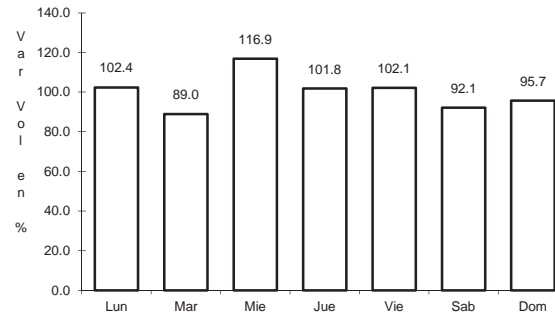
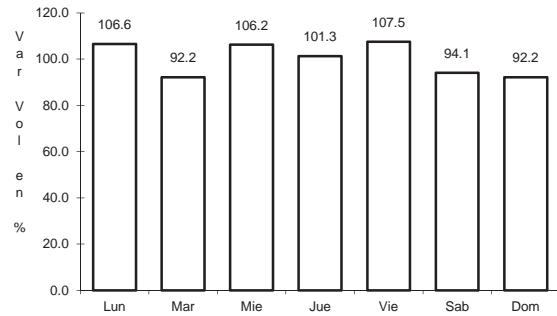
Km: 70.32                      Tipo: 1                      Sent: 1

Km: 70.32                      Tipo: 1                      Sent: 2

17 CARR: Ramal a Aeropuerto de Chihuahua

CLAVE: 08421

RUTA: MEX-016



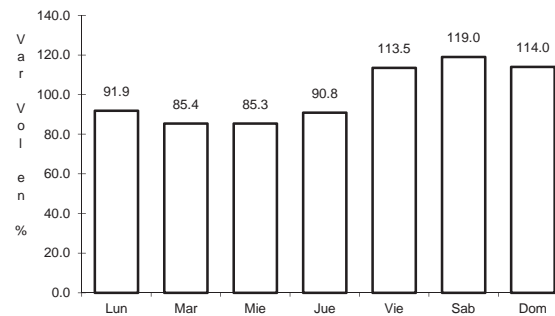
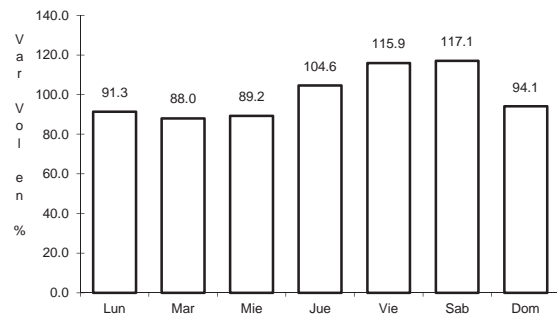
Km: 0.00                      Tipo: 3                      Sent: 1

Km: 0.00                      Tipo: 3                      Sent: 2

18 CARR: Ramal a Palomas

CLAVE: 08019

RUTA: MEX-002



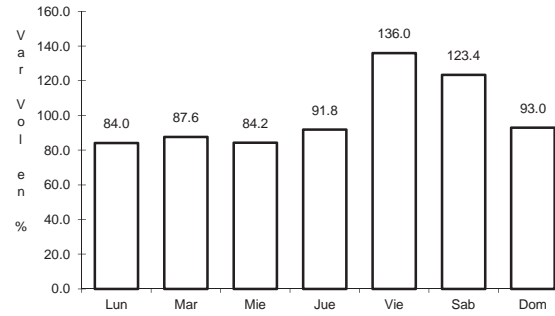
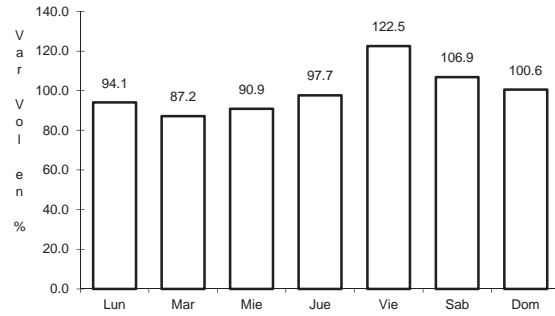
Km: 0.00                      Tipo: 3                      Sent: 0

Km: 7.50                      Tipo: 3                      Sent: 0

19 CARR: Villa Ahumada - Cd. Juárez (Libre)

CLAVE: 08420

RUTA: MEX-045



Km: 83.63

Tipo: 3

Sent: 1

Km: 83.63

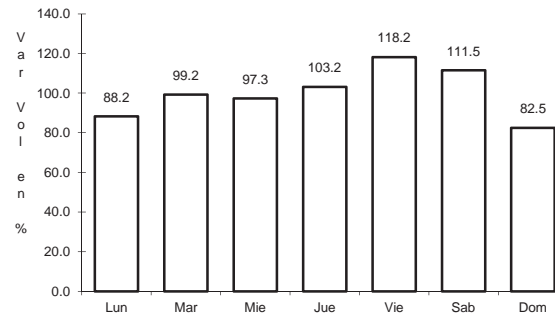
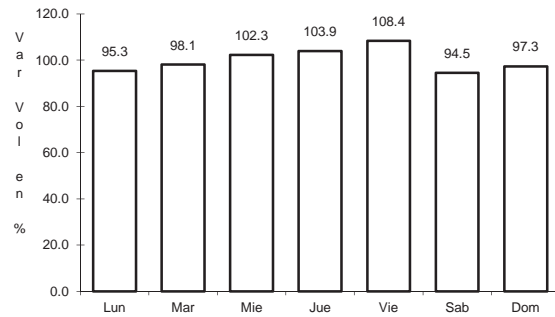
Tipo: 3

Sent: 2

20 CARR: Camargo - Delicias (Cuota)

CLAVE: 08418

RUTA: MEX-045D



Km: 111.50

Tipo: 3

Sent: 1

Km: 111.50

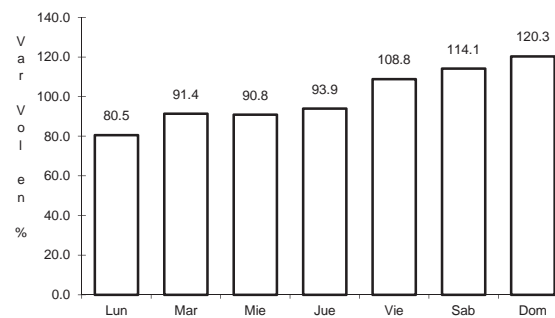
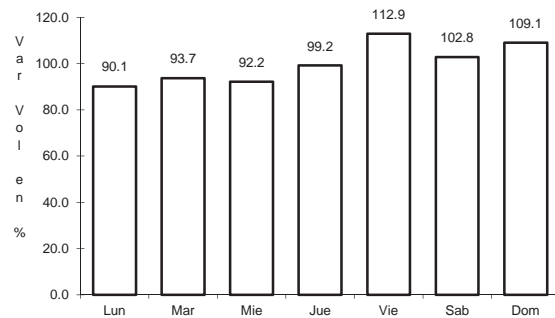
Tipo: 3

Sent: 2

21 CARR: Chihuahua - Sacramento (Cuota)

CLAVE: 08015

RUTA: MEX-045D



Km: 0.00

Tipo: 3

Sent: 1

Km: 0.00

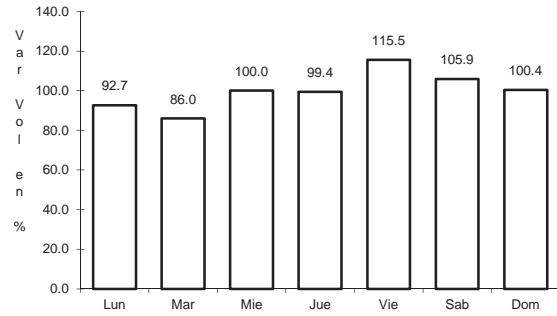
Tipo: 3

Sent: 2

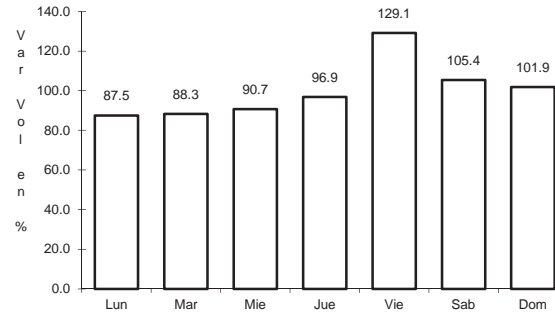
22 CARR: El Sueco - Villa Ahumada (Cuota)

CLAVE: 08420

RUTA: MEX-045D



Km: 0.00                      Tipo: 3                      Sent: 1

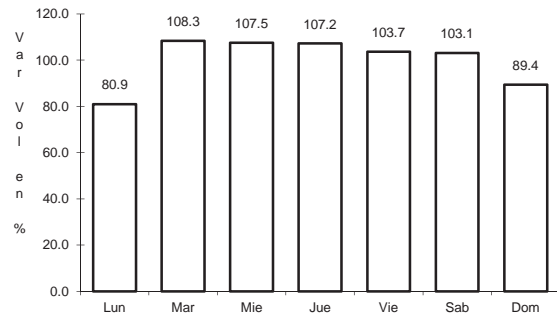


Km: 0.00                      Tipo: 3                      Sent: 2

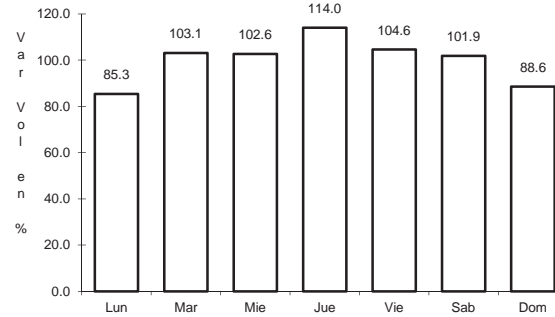
23 CARR: Gómez Palacio - Corralitos (Cuota)

CLAVE: 00016

RUTA: MEX-049D



Km: 2.21                      Tipo: 1                      Sent: 1

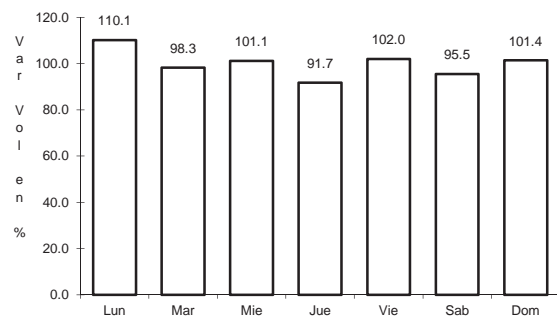


Km: 2.21                      Tipo: 1                      Sent: 2

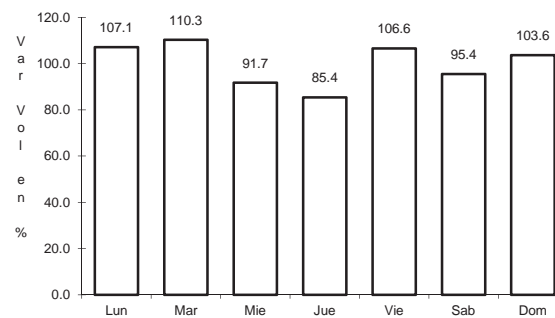
24 CARR: Jiménez - Camargo (Cuota)

CLAVE: 08418

RUTA: MEX-045D



Km: 0.00                      Tipo: 3                      Sent: 1



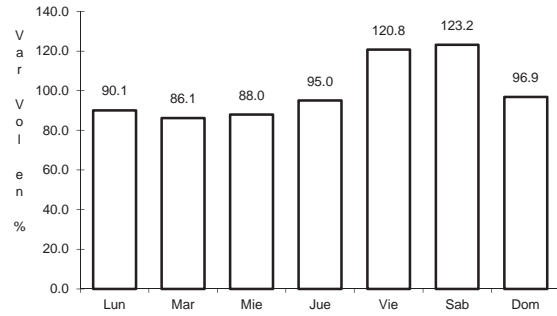
Km: 0.00                      Tipo: 3                      Sent: 2



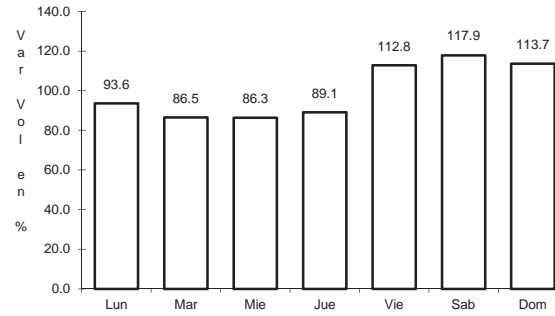
25 CARR: Ahumada - Ricardo Flores Magón

CLAVE: 08804

RUTA: CHIH



Km: 0.00      Tipo: 3      Sent: 0

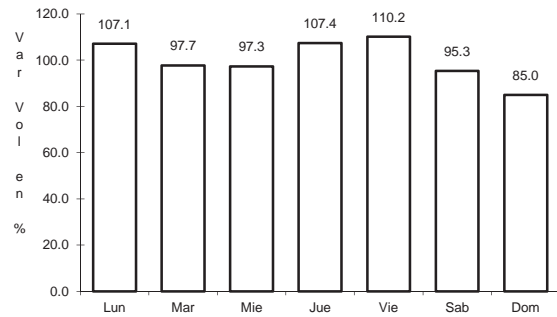


Km: 96.00      Tipo: 1      Sent: 0

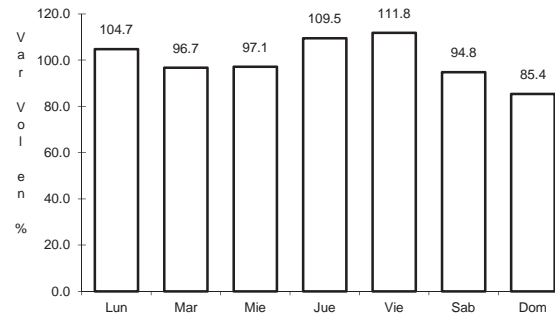
26 CARR: Cuauhtémoc - Buenaventura

CLAVE: 08015

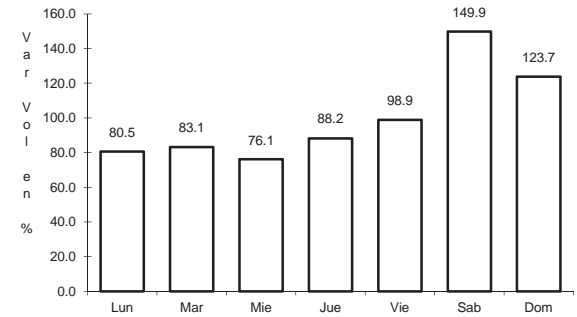
RUTA: CHIH



Km: 0.00      Tipo: 3      Sent: 1



Km: 0.00      Tipo: 3      Sent: 2

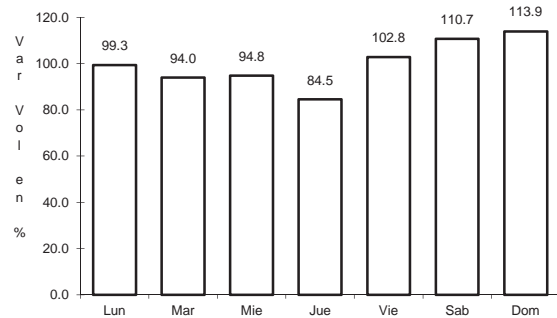


Km: 253.30      Tipo: 1      Sent: 0

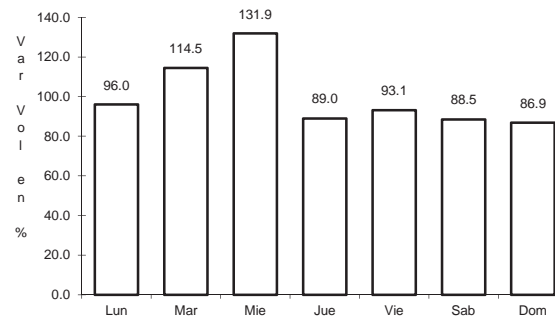
27 CARR: Delicias - Saucillo

CLAVE: 08007

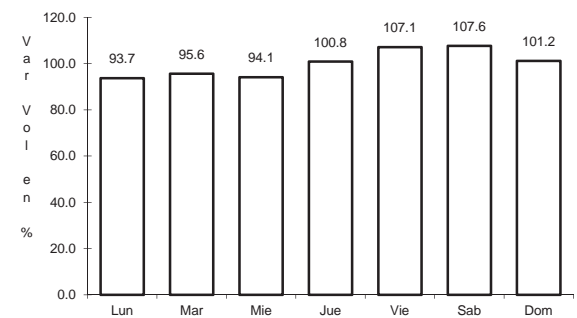
RUTA: CHIH-007



Km: 0.00      Tipo: 3      Sent: 0



Km: 17.00      Tipo: 1      Sent: 0

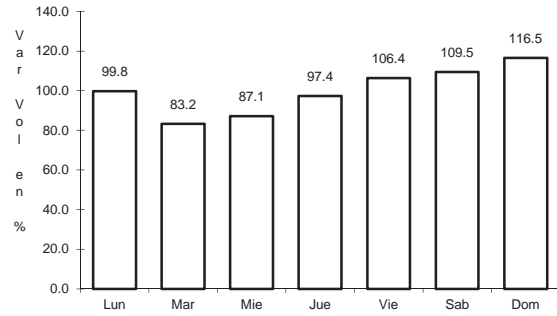


Km: 33.00      Tipo: 1      Sent: 0

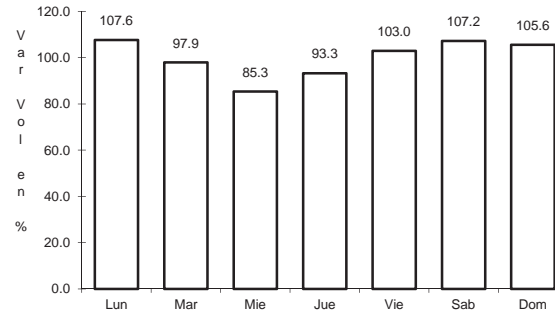
28 CARR: Ent. Peña Blanca - Ent. La Concha

CLAVE: 08493

RUTA: CHIH



Km: 0.00                      Tipo: 3                      Sent: 0

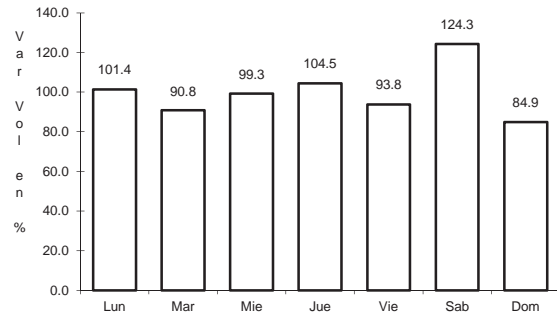


Km: 17.00                      Tipo: 1                      Sent: 0

29 CARR: Ent. Puerto Justo - Ent. Guachochic

CLAVE: 08044

RUTA: CHIH

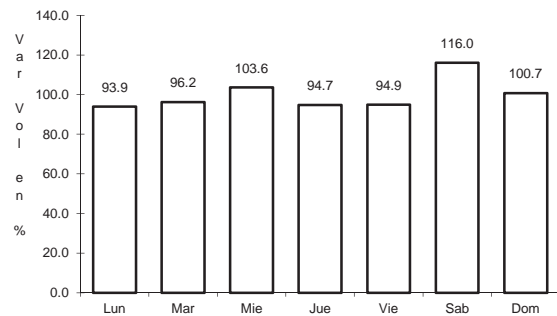


Km: 0.00                      Tipo: 3                      Sent: 0

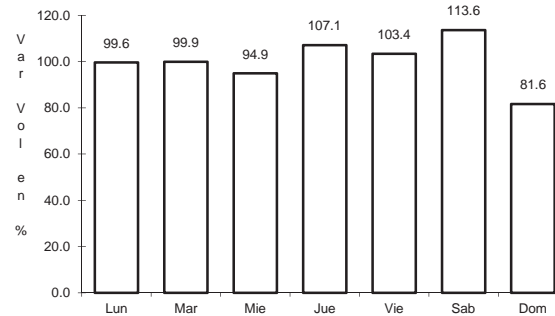
30 CARR: Jiménez - Camargo

CLAVE: 08021

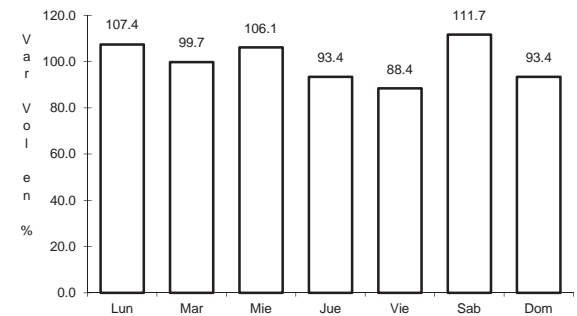
RUTA: CHIH-049



Km: 0.00                      Tipo: 3                      Sent: 0



Km: 65.80                      Tipo: 3                      Sent: 0

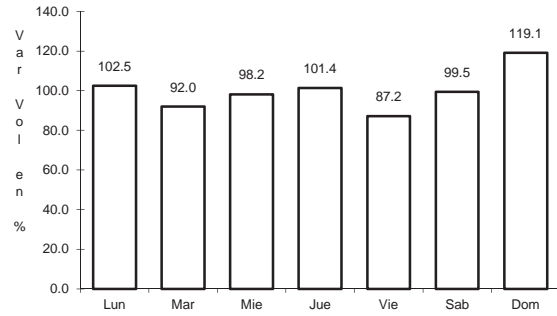


Km: 78.20                      Tipo: 1                      Sent: 0

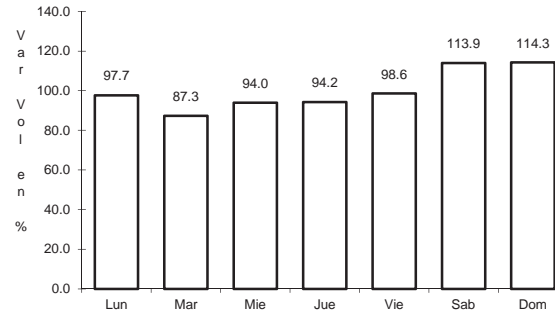
31 CARR: Lázaro Cárdenas - Ent. Colonia San José

CLAVE: 08004

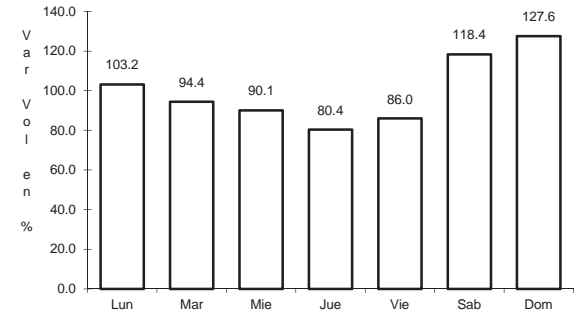
RUTA: CHIH-004



Km: 0.00                      Tipo: 3                      Sent: 1



Km: 0.00                      Tipo: 3                      Sent: 2

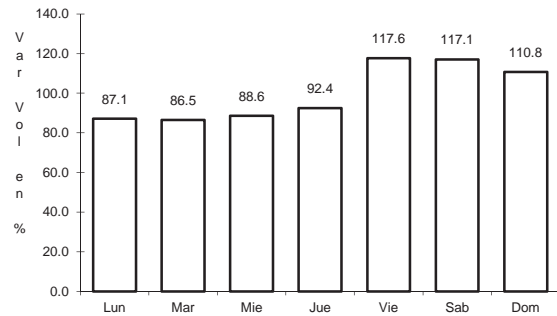


Km: 16.00                      Tipo: 1                      Sent: 0

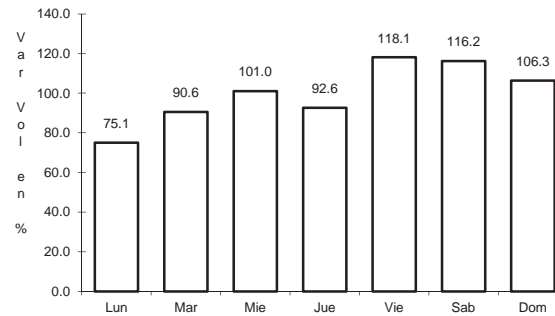
32 CARR: Libramiento de Hidalgo del Parral

CLAVE: 08221

RUTA: CHIH



Km: 8.00                      Tipo: 3                      Sent: 1

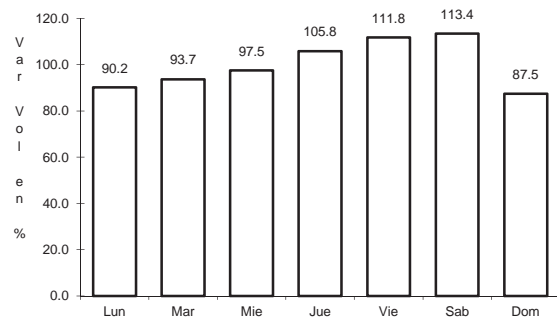


Km: 8.00                      Tipo: 3                      Sent: 2

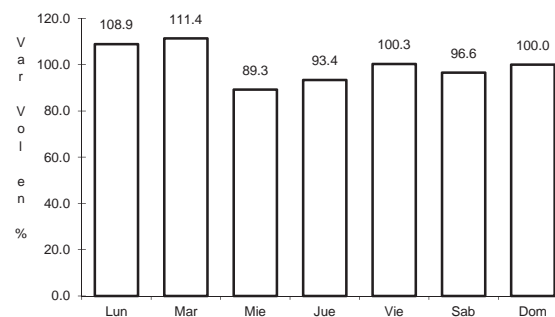
33 CARR: Libramiento de Jiménez

CLAVE: 08047

RUTA: CHIH



Km: 0.00                      Tipo: 3                      Sent: 1

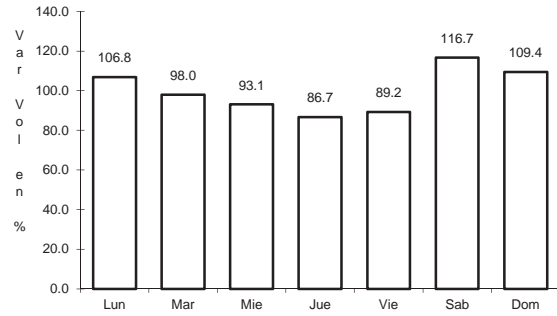


Km: 0.00                      Tipo: 3                      Sent: 2

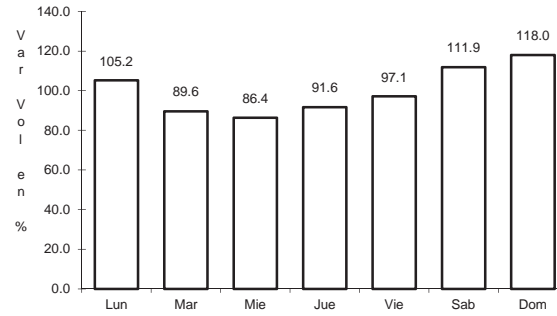
34 CARR: Meoqui - Julimes

CLAVE: 08005

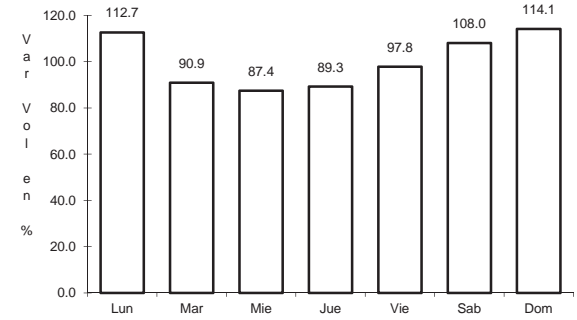
RUTA: CHIH-005



Km: 0.00                      Tipo: 3                      Sent: 0



Km: 15.40                      Tipo: 3                      Sent: 0

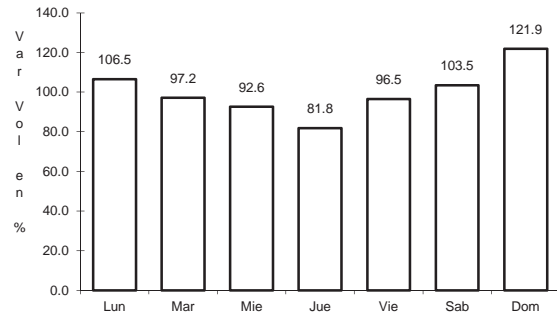


Km: 23.00                      Tipo: 1                      Sent: 0

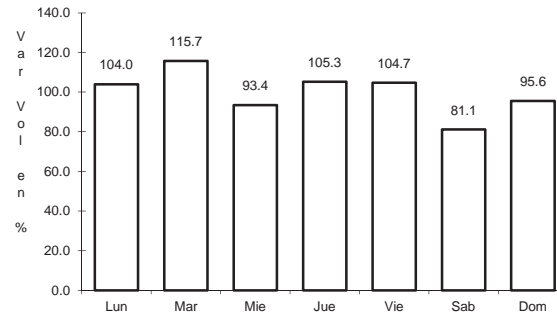
35 CARR: Ramal a Creel

CLAVE: 08812

RUTA: CHIH



Km: 0.00                      Tipo: 3                      Sent: 0

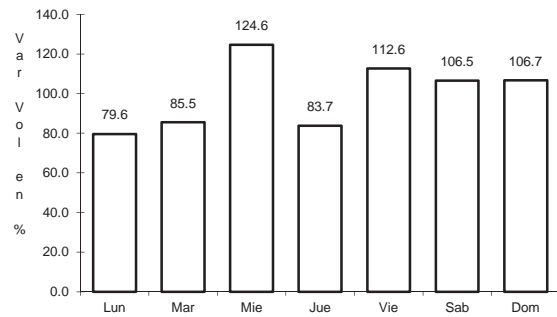


Km: 58.00                      Tipo: 3                      Sent: 0

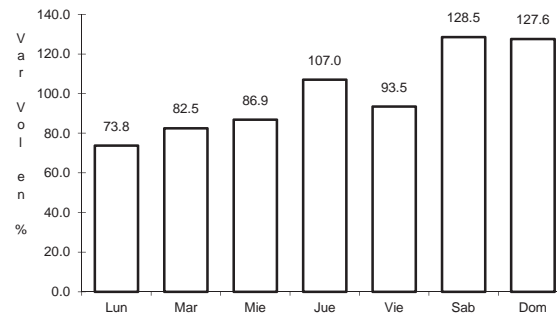
36 CARR: San Juanito - Ent. Basaseachi

CLAVE: 08045

RUTA: CHIH



Km: 0.00                      Tipo: 3                      Sent: 0

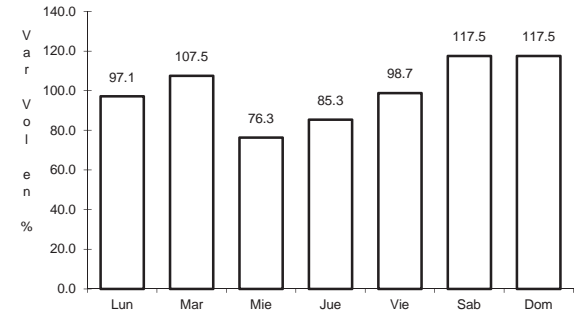
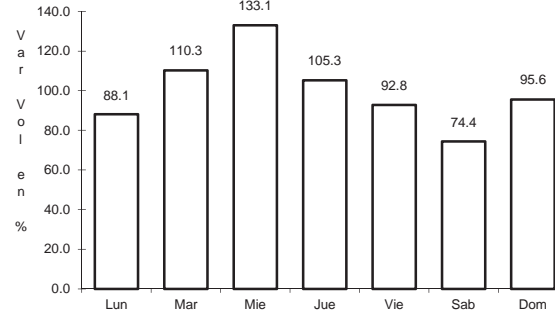
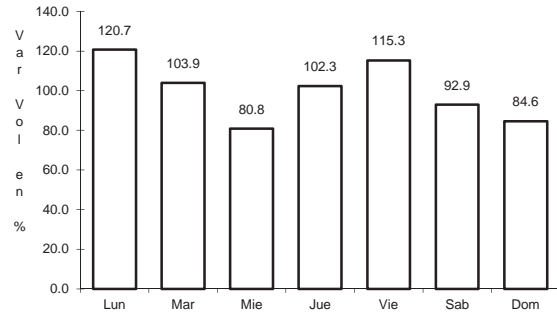


Km: 84.00                      Tipo: 1                      Sent: 0

37 CARR: T. C. (Jiménez - Camargo) - Ojinaga

CLAVE: 08009

RUTA: CHIH-018



Km: 0.00 Tipo: 3 Sent: 0

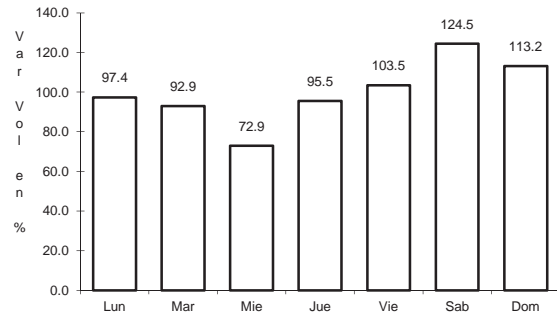
Km: 97.00 Tipo: 3 Sent: 0

Km: 247.00 Tipo: 1 Sent: 0

38 CARR: T. Julimes - La Boquilla

CLAVE: 08009

RUTA: CHIH-018

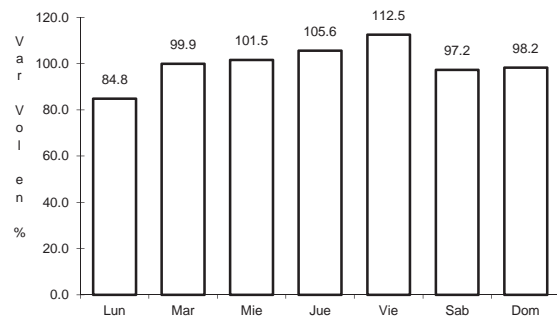


Km: 0.00 Tipo: 3 Sent: 0

39 CARR: Ent. El Álamo - Ent. Ricardo Flores Magón (Cuota)

CLAVE: 08046

RUTA: CHIH-D

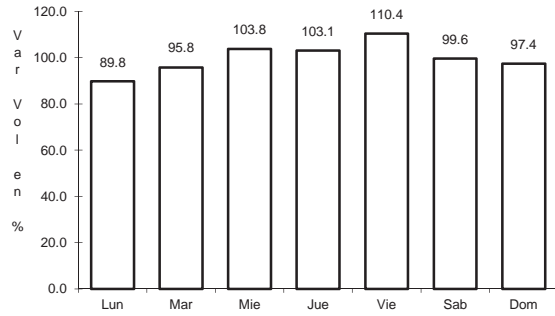


Km: 0.00 Tipo: 3 Sent: 0

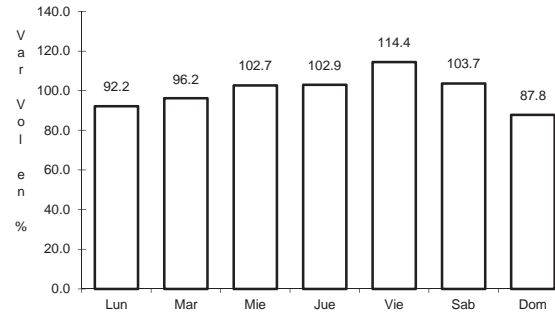
40 CARR: Ricardo Flores Magón - Galeana (Cuota)

CLAVE: 08019

RUTA: CHIH-D



Km: 0.00                      Tipo: 3                      Sent: 0

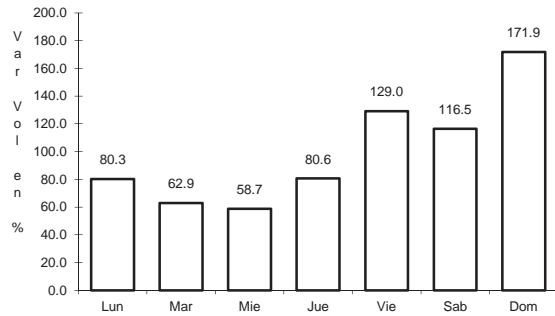


Km: 58.00                      Tipo: 1                      Sent: 0

41 CARR: Samalayuca - San Jerónimo (Cuota)

CLAVE: 08019

RUTA: CHIH-D

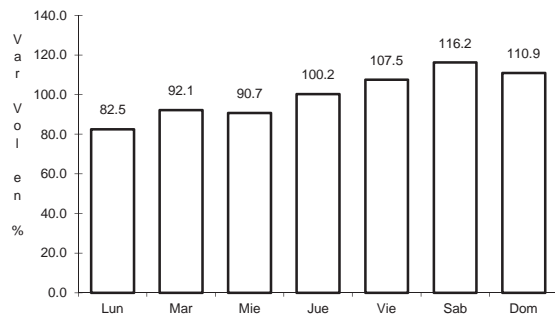


Km: 0.00                      Tipo: 3                      Sent: 0

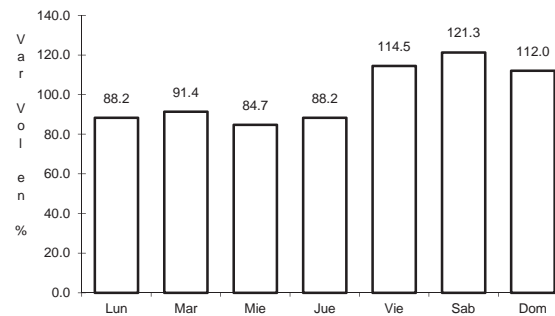
42 CARR: T. C. (Chihuahua - Ojinaga) - La Mula (Cuota)

CLAVE: 08170

RUTA: CHIH-D



Km: 0.00                      Tipo: 3                      Sent: 0

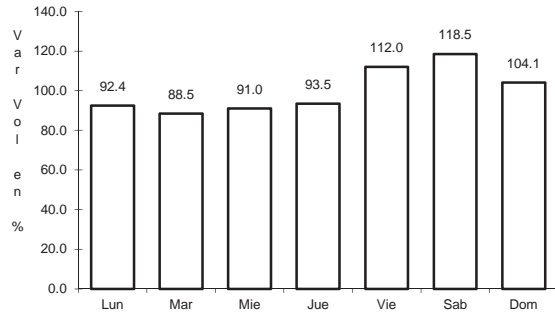


Km: 110.00                      Tipo: 1                      Sent: 0

43 CARR: Chihuahua - Madera

CLAVE: 08038

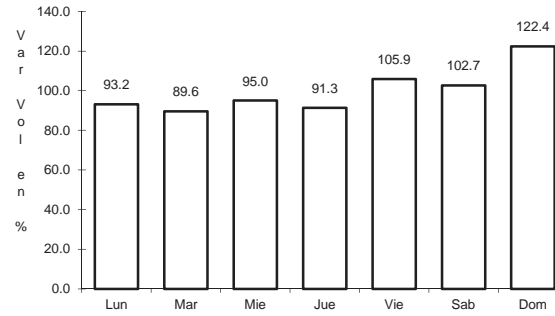
RUTA: CHIH-D-MEX-001-CHIH



Km: 10.50

Tipo: 1

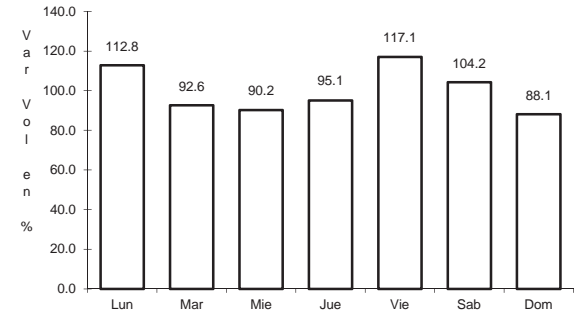
Sent: 1



Km: 10.50

Tipo: 1

Sent: 2



Km: 261.30

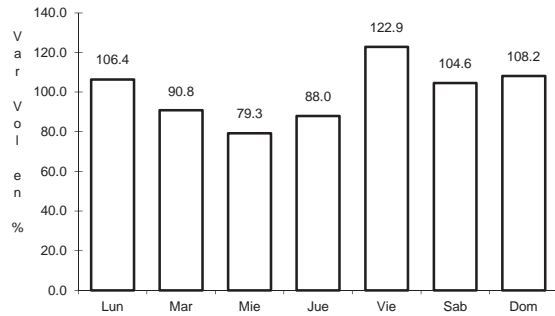
Tipo: 3

Sent: 0

44 CARR: Ent. Agua Caliente - El Terrero

CLAVE: 08170

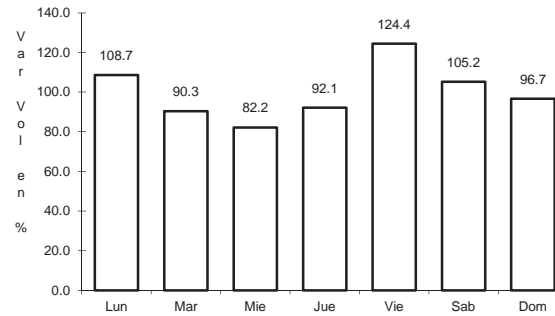
RUTA: CHIH-MEX



Km: 0.00

Tipo: 3

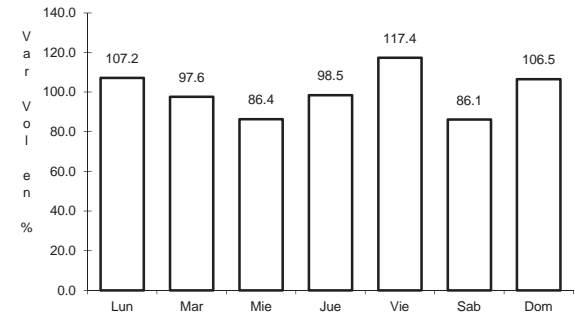
Sent: 0



Km: 22.00

Tipo: 1

Sent: 0



Km: 120.00

Tipo: 1

Sent: 0