

COAHUILA

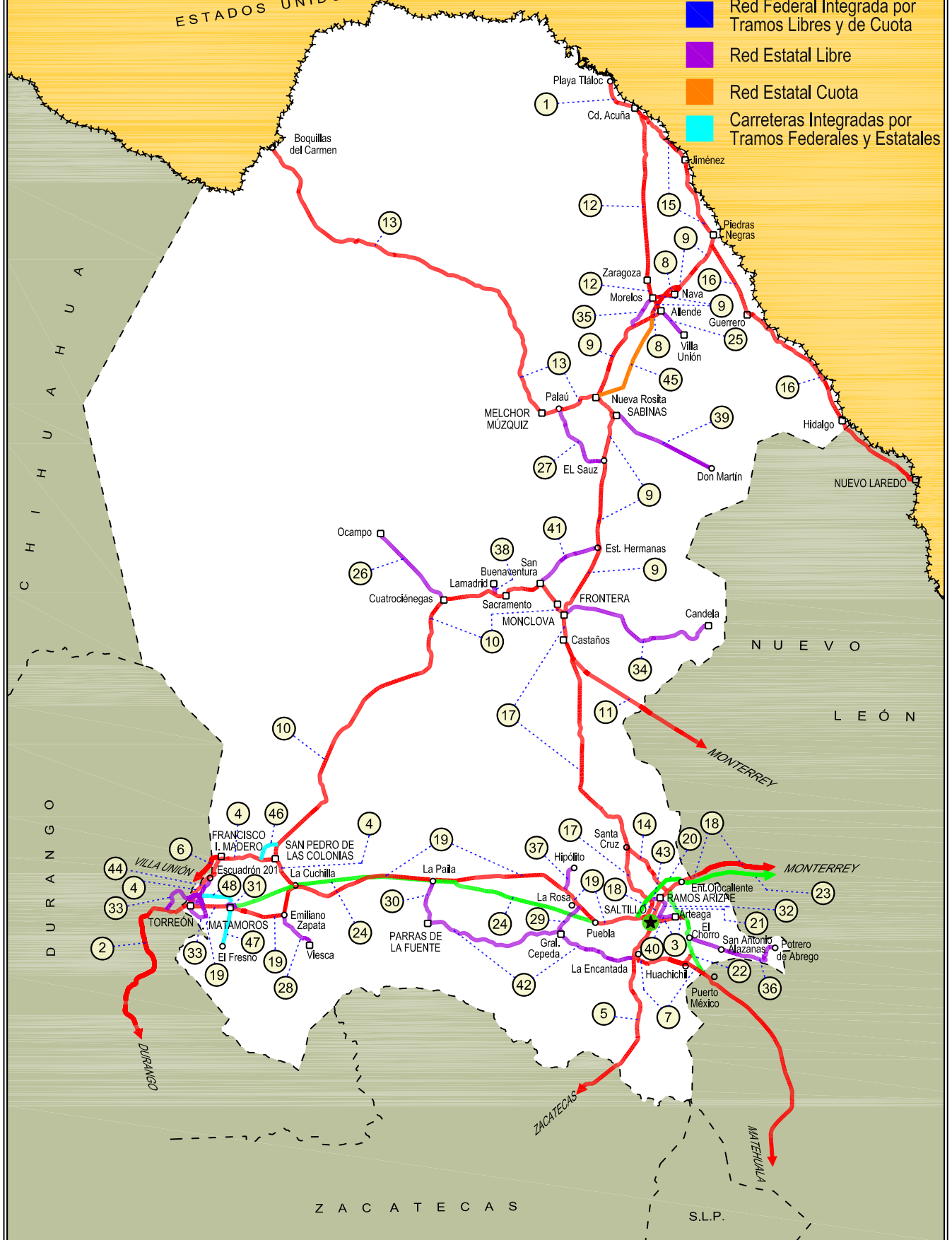
NO. INDICE	CARRETERA	RUTA
---RED FEDERAL LIBRE---		
1	Cd. Acuña - Presa de La Amistad	MEX-002
2	Durango - Torreón	MEX-040
3	Ent. Bella Unión - Saltillo	MEX-057
4	Ent. La Cuchilla - Torreón	MEX-040
5	Ent. Morelos - Saltillo	MEX-054
6	Gregorio García - Francisco I. Madero	MEX-040
7	Huachichil - La Encantada	MEX-057
8	Libramiento Allende - Nava	MEX-057
9	Monclova - Piedras Negras	MEX-057
10	Monclova - San Pedro de Las Colonias	MEX-030
11	Monterrey - Castaños	MEX-053
12	Morelos - Cd. Acuña	MEX-029
13	Nueva Rosita - Boquillas del Carmen	MEX-053
14	Ojo Caliente - Santa Cruz	MEX-057
15	Piedras Negras - Cd. Acuña	MEX-002
16	Piedras Negras - Nuevo Laredo	MEX-002
17	Saltillo - Monclova	MEX-057
18	Saltillo - Monterrey	MEX-040
19	Saltillo - Torreón	MEX-040
---RED FEDERAL DE CUOTA---		
20	Libramiento Norponiente de Saltillo (Cuota)	MEX-S30
21	Libramiento Oriente de Saltillo (Cuota)	MEX-057D
22	Puerto México - La Carbonera (Cuota)	MEX-057D
23	Saltillo - Monterrey (Cuota)	MEX-040D
24	Torreón - Saltillo (Cuota)	MEX-040D
---RED ESTATAL LIBRE---		
25	Allende - Villa Unión	COA-015
26	Cuatro Ciénegas - Ocampo	COA-048
27	El Sauz - Palau	COA-022
28	Emiliano Zapata - Viesca	COA-082
29	Ent. La Rosa - General Cepeda	COA-034
30	Ent. Paila - Parras de La Fuente	COA-102
31	Libramiento de Matamoros	COA
32	Libramiento de Saltillo J.L.P.	COA
33	Libramiento de Torreón	COA
34	Monclova - Estación Candela	COA-030-NL
35	Morelos - Ent. Las Corrientes	COA-010
36	Puerto de Flores - El Hondable	COA-112
37	Ramal a Hipólito	COA-114
38	Ramal a Lamadrid	COA-042
39	Sabinas - Don Martín	COA-025
40	Saltillo - Arteaga	COA-106
41	San Buenaventura - Estación Hermanas	COA-034
42	T. C. (Ent. Morelos - Saltillo) - Parras de La Fuente	COA-105
43	T. C. (Saltillo - Monclova) - Ramos Arizpe	COA
44	Torreón - Escuadrón 201	COA-011
---RED ESTATAL DE CUOTA---		
45	Nueva Rosita - Ent. Allende (Cuota)	COA-D
---CARRETERAS INTEGRADAS POR TRAMOS FEDERALES Y ESTATALES---		
46	Corredor Libramiento de San Pedro	MEX-S-030-D
47	Matamoros - El Fresno	MEX-S-030-D
48	Matamoros - La Unión	MEX-S-030-D

05 COAHUILA

SECRETARÍA DE COMUNICACIONES Y TRANSPORTES
DIRECCIÓN GENERAL DE SERVICIOS TÉCNICOS

ESTADOS UNIDOS DE AMÉRICA

- ① --- Número Índice
- Red Federal Libre
- Red Federal Cuota
- Red Federal Integrada por Tramos Libres y de Cuota
- Red Estatal Libre
- Red Estatal Cuota
- Carreteras Integradas por Tramos Federales y Estatales



COAHUILA

1 CARR: Cd. Acuña - Presa de La Amistad

CLAVE: 05085

RUTA: MEX-002

AÑO: 2013

LUGAR	ESTACION				CLASIFICACION VEHICULAR EN PORCIENTO													COORDENADAS		
	KM	TE	SC	TDPA	M	A	B	C2	C3	T3S2	T3S3	T3S2R4	OTROS	A	B	C	K'	D	LATITUD	LONGITUD
Cd. Acuña	0.00	3	1	9315	1.2	89.7	2.0	4.4	0.4	1.0	0.7	0.1	0.5	90.9	2.0	7.1	0.080	0.504	29.333946	-100.964305
Cd. Acuña	0.00	3	2	9154	1.2	88.4	2.3	5.1	0.4	1.1	0.9	0.1	0.5	89.6	2.3	8.1	0.106	0.504	29.333784	-100.964371
T. Izq. Santa Eulalia	10.60	1	1	2742	1.3	80.6	3.8	9.7	1.4	2.3	0.5	0.0	0.4	81.9	3.8	14.3	0.134	0.515	29.342767	-101.001715
T. Izq. Santa Eulalia	10.60	1	2	2579	1.3	78.9	4.1	10.6	1.5	2.7	0.5	0.0	0.4	80.2	4.1	15.7	0.137	0.515	29.342588	-101.001728
Presa de La Amistad	23.00	1	0	553	1.0	79.8	0.1	15.8	1.9	1.0	0.3	0.0	0.1	80.8	0.1	19.1	0.161	0.537	29.447665	-101.072811

2 CARR: Durango - Torreón

CLAVE: 10085

RUTA: MEX-040

AÑO: 2013

LUGAR	ESTACION				CLASIFICACION VEHICULAR EN PORCIENTO													COORDENADAS		
	KM	TE	SC	TDPA	M	A	B	C2	C3	T3S2	T3S3	T3S2R4	OTROS	A	B	C	K'	D	LATITUD	LONGITUD
Durango	0.00	3	1	10309	3.1	83.0	1.4	8.1	1.1	1.7	1.1	0.1	0.4	86.1	1.4	12.5	0.068	0.522	24.076451	-104.591114
Durango	0.00	3	2	9453	1.8	83.6	1.6	8.5	1.1	1.7	1.2	0.1	0.4	85.4	1.6	13.0	0.076	0.522	24.076448	-104.591122
T. Der. Cd. de Los Niños	7.70	3	1	6447	1.8	84.6	1.9	7.3	0.9	1.9	0.9	0.2	0.5	86.4	1.9	11.7	0.085	0.503	24.080314	-104.587987
T. Der. Cd. de Los Niños	7.70	3	2	6368	1.8	82.7	2.1	8.5	1.0	2.1	1.1	0.2	0.5	84.5	2.1	13.4	0.082	0.503	24.080314	-104.587987
X. Periférico de Durango	9.00	1	1	6763	1.6	82.9	1.6	8.0	1.2	2.4	1.2	0.5	0.6	84.5	1.6	13.9	0.069	0.515	24.088620	-104.580908
X. Periférico de Durango	9.00	1	2	6376	1.3	80.9	1.8	9.5	1.5	2.6	1.3	0.5	0.6	82.2	1.8	16.0	0.075	0.515	24.088613	-104.580940
T. Der. Aeropuerto	9.42	3	1	4888	2.2	82.6	0.9	8.1	1.3	2.4	1.6	0.3	0.6	84.8	0.9	14.3	0.074	0.504	24.098735	-104.576216
T. Der. Aeropuerto	9.42	3	2	4801	1.6	80.8	1.0	9.8	1.4	2.7	1.7	0.3	0.7	82.4	1.0	16.6	0.076	0.504	24.098657	-104.576240
La Calera	10.85	3	0	6929	1.6	71.5	2.5	12.1	2.6	5.2	2.7	0.9	0.9	73.1	2.5	24.4	0.076	0.505	24.111445	-104.571885
Abraham González	27.10	3	0	3880	1.0	67.0	2.1	14.1	2.4	7.9	3.5	1.0	1.0	68.0	2.1	29.9	0.090	0.501	24.200265	-104.526153
Francisco I. Madero	56.30	1	0	3854	0.5	68.5	4.1	11.1	2.2	8.4	3.7	1.0	0.5	69.0	4.1	26.9	0.076	0.507	24.393151	-104.330090
Francisco I. Madero	56.30	3	0	3779	0.6	67.6	3.5	11.4	2.0	9.5	3.7	0.9	0.8	68.2	3.5	28.3	0.078	0.509	24.405257	-104.303310
Guadalupe Victoria	77.50	1	0	4712	1.0	70.1	3.7	10.3	2.0	8.2	3.2	0.9	0.6	71.1	3.7	25.2	0.075	0.506	24.446871	-104.138155
Guadalupe Victoria	77.50	3	0	5796	1.6	69.3	3.3	12.6	2.3	7.1	2.5	0.6	0.7	70.9	3.3	25.8	0.080	0.506	24.449246	-104.110813
T. Der. Ignacio Allende	90.13	1	0	4514	0.7	62.8	3.9	12.9	2.7	10.6	3.7	1.7	1.0	63.5	3.9	32.6	0.074	0.505	24.497646	-104.023362
T. Der. Ignacio Allende	90.13	3	0	2869	0.5	53.9	5.1	14.2	5.3	12.7	5.6	2.1	0.6	54.4	5.1	40.5	0.077	0.509	24.499458	-104.020166
T. Izq. Peñón Blanco	120.90	1	0	2183	0.5	49.3	4.7	13.9	5.9	15.5	7.0	2.4	0.8	49.8	4.7	45.5	0.081	0.510	24.732654	-103.843696
T. Izq. Peñón Blanco	120.90	3	0	2105	0.5	53.8	3.3	11.2	6.6	14.6	6.8	2.2	1.0	54.3	3.3	42.4	0.067	0.514	24.741632	-103.838275
Cuencamé	144.30	1	0	2059	0.8	52.8	3.1	12.2	6.0	16.1	6.4	2.1	0.5	53.6	3.1	43.3	0.083	0.510	24.850283	-103.715977
Cuencamé	144.30	3	0	6329	0.5	48.3	5.2	10.6	5.8	16.6	5.9	5.9	1.2	48.8	5.2	46.0	0.067	0.512	24.908838	-103.704745
T. Izq. Nazas	171.61	1	0	4575	1.0	50.2	2.8	10.2	7.8	14.2	8.0	4.0	1.8	51.2	2.8	46.0	0.059	0.518	25.086594	-103.771218
T. Izq. Nazas	171.61	3	0	5385	1.1	66.6	3.3	10.2	4.1	7.8	3.2	2.7	1.0	67.7	3.3	29.0	0.070	0.506	25.090967	-103.770068
T. Der. Villa Juárez	194.40	3	0	4250	0.9	49.8	6.4	10.4	7.4	12.8	7.5	3.2	1.6	50.7	6.4	42.9	0.066	0.500	25.225797	-103.628518
León Guzmán	229.58	3	0	8458	0.7	68.0	3.8	9.4	3.5	8.9	2.7	2.0	1.0	68.7	3.8	27.5	0.060	0.513	25.504578	-103.654382
Cd. Lerdo	244.80	1	1	5741	1.1	73.0	2.2	7.3	2.8	7.3	3.1	2.0	1.2	74.1	2.2	23.7	0.075	0.510	25.512043	-103.542119

COAHUILA

2 CARR: Durango - Torreón

CLAVE: 10085

RUTA: MEX-040

AÑO: 2013

LUGAR	ESTACION				CLASIFICACION VEHICULAR EN PORCIENTO													COORDENADAS		
	KM	TE	SC	TDPA	M	A	B	C2	C3	T3S2	T3S3	T3S2R4	OTROS	A	B	C	K'	D	LATITUD	LONGITUD
Cd. Lerdo	244.80	1	2	5511	1.7	69.7	2.4	7.8	3.1	8.4	3.3	2.2	1.4	71.4	2.4	26.2	0.071	0.510	25.512050	-103.542112
T. Izq. Gómez Palacio	248.90	3	1	29787	2.2	89.2	1.8	4.8	0.1	0.2	1.5	0.0	0.2	91.4	1.8	6.8	0.078	0.502	25.553732	-103.481659
T. Izq. Gómez Palacio	248.90	3	2	30022	2.1	88.7	1.9	5.2	0.1	0.2	1.6	0.0	0.2	90.8	1.9	7.3	0.078	0.502	25.553970	-103.481543
Lim. Edos. Term. Dgo. Ppia. Coah.	251.00																			
Torreón	255.80	1	1	18194	2.3	86.9	0.9	3.3	0.5	1.3	3.0	0.7	1.1	89.2	0.9	9.9	0.068	0.535	25.548335	-103.472066
Torreón	255.80	1	2	18168	2.3	85.5	1.0	3.7	0.5	1.5	3.5	0.7	1.3	87.8	1.0	11.2	0.071	0.535	25.548526	-103.471943

3 CARR: Ent. Bella Unión - Saltillo

CLAVE: 05003

RUTA: MEX-057

AÑO: 2013

LUGAR	ESTACION				CLASIFICACION VEHICULAR EN PORCIENTO													COORDENADAS		
	KM	TE	SC	TDPA	M	A	B	C2	C3	T3S2	T3S3	T3S2R4	OTROS	A	B	C	K'	D	LATITUD	LONGITUD
T. C. Ent. Puerto México - Ent. Ojo Caliente (Cuota)	0.00																			
T. Der. Arteaga	4.61	1	1	4818	0.6	81.3	6.1	7.0	1.4	1.7	0.8	0.5	0.6	81.9	6.1	12.0	0.142	0.501	25.443768	-100.834548
T. Der. Arteaga	4.61	1	2	4846	1.0	78.6	6.9	7.8	1.6	1.9	0.9	0.7	0.6	79.6	6.9	13.5	0.117	0.501	25.443882	-100.834511
Saltillo	17.00	1	1	16534	0.9	80.0	4.8	7.1	2.7	3.3	0.6	0.4	0.2	80.9	4.8	14.3	0.087	0.514	25.437029	-100.903740
Saltillo	17.00	1	2	15625	1.0	78.0	5.3	7.8	3.1	3.6	0.6	0.4	0.2	79.0	5.3	15.7	0.093	0.514	25.437107	-100.903831

4 CARR: Ent. La Cuchilla - Torreón

CLAVE: 05021

RUTA: MEX-040

AÑO: 2013

LUGAR	ESTACION				CLASIFICACION VEHICULAR EN PORCIENTO													COORDENADAS		
	KM	TE	SC	TDPA	M	A	B	C2	C3	T3S2	T3S3	T3S2R4	OTROS	A	B	C	K'	D	LATITUD	LONGITUD
La Cuchilla	0.00	3	0	906	2.8	58.7	6.0	16.2	4.9	6.0	2.8	2.0	0.6	61.5	6.0	32.5	0.084	0.514	25.626507	-102.883044
T. Der. Mayran	3.30	3	0	1298	3.2	65.8	4.0	14.1	3.2	4.6	2.6	1.6	0.9	69.0	4.0	27.0	0.094	0.506	25.646774	-102.905101
T. Izq. San Patricio	9.07	3	0	1697	5.1	74.8	2.5	6.9	3.1	4.4	1.5	1.4	0.3	79.9	2.5	17.6	0.096	0.504	25.680037	-102.935682
San Pedro de Las Colonias	18.70	1	1	2772	7.2	68.9	5.6	15.0	1.0	1.2	0.6	0.4	0.1	76.1	5.6	18.3	0.089	0.505	25.745756	-102.968755
San Pedro de Las Colonias	18.70	1	2	2831	7.9	64.6	6.3	17.7	1.1	1.4	0.5	0.4	0.1	72.5	6.3	21.2	0.080	0.505	25.745656	-102.968952
San Pedro de Las Colonias	18.70	3	1	5078	2.2	86.4	2.3	4.5	1.1	1.9	0.7	0.7	0.2	88.6	2.3	9.1	0.074	0.503	25.756443	-103.023478
San Pedro de Las Colonias	18.70	3	2	5131	2.6	84.8	2.5	5.2	1.1	2.0	0.8	0.8	0.2	87.4	2.5	10.1	0.071	0.503	25.756261	-103.023416
Urquizo	33.00	1	1	4580	2.2	81.3	2.2	8.6	1.7	2.4	0.7	0.7	0.2	83.5	2.2	14.3	0.072	0.502	25.768467	-103.090687
Urquizo	33.00	1	2	4613	0.6	81.8	2.3	7.8	3.0	2.5	0.7	1.0	0.3	82.4	2.3	15.3	0.065	0.502	25.768288	-103.090778
Urquizo	33.00	3	1	4490	2.8	81.9	2.9	8.3	0.9	1.7	0.6	0.5	0.4	84.7	2.9	12.4	0.076	0.508	25.772075	-103.137788
Urquizo	33.00	3	2	4357	1.4	81.8	2.9	9.6	0.9	1.8	0.7	0.4	0.5	83.2	2.9	13.9	0.064	0.508	25.772640	-103.136368
T. Der. Colón	41.00	3	1	5380	1.6	80.3	1.8	8.4	2.1	2.9	1.2	0.7	1.0	81.9	1.8	16.3	0.069	0.510	25.760372	-103.192960
T. Der. Colón	41.00	3	2	5168	1.8	78.5	2.0	9.2	2.2	3.1	1.3	0.8	1.1	80.3	2.0	17.7	0.070	0.510	25.760372	-103.192960
T. Izq. Guadalupe Victoria	41.78	3	1	5670	2.0	81.1	1.9	8.1	2.0	2.5	1.1	0.7	0.6	83.1	1.9	15.0	0.078	0.502	25.761913	-103.226780

COAHUILA

4 CARR: Ent. La Cuchilla - Torreón

CLAVE: 05021

RUTA: MEX-040

AÑO: 2013

LUGAR	ESTACION				CLASIFICACION VEHICULAR EN PORCIENTO														COORDENADAS	
	KM	TE	SC	TDPA	M	A	B	C2	C3	T3S2	T3S3	T3S2R4	OTROS	A	B	C	K'	D	LATITUD	LONGITUD
T. Izq. Guadalupe Victoria	41.78	3	2	5624	1.9	79.0	2.1	9.6	2.0	2.8	1.3	0.6	0.7	80.9	2.1	17.0	0.071	0.502	25.761911	-103.226766
T. Der. Fco. I. Madero	43.80	1	1	6266	3.0	79.5	2.0	8.6	1.7	2.6	1.3	0.6	0.7	82.5	2.0	15.5	0.072	0.509	25.762624	-103.240720
T. Der. Fco. I. Madero	43.80	1	2	6037	2.6	78.0	2.3	9.5	1.7	3.1	1.4	0.6	0.8	80.6	2.3	17.1	0.072	0.509	25.762625	-103.240716
T. Der. Fco. I. Madero	43.80	3	1	5493	2.6	80.6	2.2	7.2	1.8	2.9	1.2	0.7	0.8	83.2	2.2	14.6	0.083	0.506	25.755400	-103.289216
T. Der. Fco. I. Madero	43.80	3	2	5357	2.6	78.7	2.5	8.1	2.1	3.2	1.3	0.7	0.8	81.3	2.5	16.2	0.084	0.506	25.755400	-103.289216
T. Izq. Escuadrón 201	62.40	3	1	8081	2.3	81.0	2.0	8.2	1.7	2.3	1.3	0.6	0.6	83.3	2.0	14.7	0.071	0.505	25.670918	-103.351393
T. Izq. Escuadrón 201	62.40	3	2	8232	2.2	79.2	2.2	9.1	2.0	2.5	1.5	0.7	0.6	81.4	2.2	16.4	0.078	0.505	25.670922	-103.351387
Torreón	84.00	1	1	9309	2.1	91.3	2.3	2.4	0.3	0.5	0.8	0.1	0.2	93.4	2.3	4.3	0.098	0.501	25.579931	-103.413257
Torreón	84.00	1	2	9352	2.1	90.8	2.5	2.6	0.3	0.5	0.9	0.1	0.2	92.9	2.5	4.6	0.092	0.501	25.579697	-103.413770

5 CARR: Ent. Morelos - Saltillo

CLAVE: 00149

RUTA: MEX-054

AÑO: 2013

LUGAR	ESTACION				CLASIFICACION VEHICULAR EN PORCIENTO														COORDENADAS	
	KM	TE	SC	TDPA	M	A	B	C2	C3	T3S2	T3S3	T3S2R4	OTROS	A	B	C	K'	D	LATITUD	LONGITUD
T. C. Zacatecas - Durango	0.00	3	1	2943	0.4	76.5	4.7	8.0	2.5	4.0	1.4	1.8	0.7	76.9	4.7	18.4	0.087	0.509	22.868947	-102.619545
T. C. Zacatecas - Durango	0.00	3	2	3048	0.5	73.6	4.8	9.4	2.7	4.6	1.5	2.1	0.8	74.1	4.8	21.1	0.086	0.509	22.869005	-102.619583
T. Der. Sta. Mónica	11.00	1	1	2922	0.3	71.4	5.6	7.6	2.1	8.2	1.7	2.4	0.7	71.7	5.6	22.7	0.085	0.506	22.937567	-102.570011
T. Der. Sta. Mónica	11.00	1	2	2999	0.6	68.8	5.8	8.4	2.3	8.6	1.8	2.8	0.9	69.4	5.8	24.8	0.081	0.506	22.937578	-102.570123
T. Der. Sta. Mónica	11.00	3	1	2486	0.2	67.5	4.8	9.4	2.6	8.3	3.0	3.3	0.9	67.7	4.8	27.5	0.082	0.505	22.950436	-102.559172
T. Der. Sta. Mónica	11.00	3	2	2531	0.3	63.4	5.6	10.4	2.8	9.7	3.3	3.5	1.0	63.7	5.6	30.7	0.086	0.505	22.950500	-102.559200
T. Izq. Villa de Cos	53.90	1	1	2785	0.1	66.9	5.9	9.4	2.4	8.6	1.9	4.0	0.8	67.0	5.9	27.1	0.084	0.522	23.262868	-102.334723
T. Izq. Villa de Cos	53.90	1	2	2550	0.4	62.0	6.8	10.9	2.9	9.5	2.2	4.4	0.9	62.4	6.8	30.8	0.083	0.522	23.262968	-102.334801
T. Izq. Villa de Cos	53.90	3	1	2444	0.9	55.5	7.8	11.3	3.4	13.2	3.2	4.0	0.7	56.4	7.8	35.8	0.079	0.504	23.282256	-102.320708
T. Izq. Villa de Cos	53.90	3	2	2477	0.7	49.1	8.9	13.0	3.9	15.4	3.7	4.4	0.9	49.8	8.9	41.3	0.080	0.504	23.282341	-102.320750
Sierra Vieja	85.50	3	1	1582	0.4	51.7	8.7	12.0	3.2	15.4	3.1	4.6	0.9	52.1	8.7	39.2	0.110	0.501	23.504516	-102.122897
Sierra Vieja	85.50	3	2	1587	0.8	47.0	9.6	12.7	3.4	16.8	3.5	5.2	1.0	47.8	9.6	42.6	0.091	0.501	23.504530	-102.122991
T. Der. Majoma	144.50	3	1	1497	1.0	44.3	9.4	12.4	2.7	18.6	4.0	6.7	0.9	45.3	9.4	45.3	0.092	0.501	23.879410	-101.734633
T. Der. Majoma	144.50	3	2	1505	0.6	40.3	10.3	13.6	2.9	19.9	4.3	7.1	1.0	40.9	10.3	48.8	0.080	0.501	23.879479	-101.734751
T. Der. San Tiburcio	185.25	1	1	1476	0.9	49.1	7.7	11.4	3.0	18.6	3.2	4.7	1.4	50.0	7.7	42.3	0.080	0.500	24.157452	-101.495686
T. Der. San Tiburcio	185.25	1	2	1477	0.5	45.6	8.2	12.8	3.1	20.0	3.4	5.0	1.4	46.1	8.2	45.7	0.092	0.500	24.157491	-101.495787
T. Der. San Tiburcio	185.25	3	1	1864	1.7	49.3	7.4	16.3	3.5	12.8	3.1	5.0	0.9	51.0	7.4	41.6	0.083	0.502	24.160320	-101.493641
T. Der. San Tiburcio	185.25	3	2	1845	1.4	43.6	8.2	18.9	3.8	14.4	3.4	5.5	0.8	45.0	8.2	46.8	0.084	0.502	24.160363	-101.493747
T. Izq. Concepción del Oro	240.00	1	1	2444	1.6	57.2	5.4	15.7	2.9	10.3	2.5	3.4	1.0	58.8	5.4	35.8	0.077	0.502	24.611552	-101.368800
T. Izq. Concepción del Oro	240.00	1	2	2422	1.4	48.2	6.9	18.8	3.5	12.9	2.8	4.5	1.0	49.6	6.9	43.5	0.076	0.502	24.611487	-101.368823
T. Izq. Concepción del Oro	240.00	3	1	2366	0.3	60.3	6.2	12.6	3.6	11.3	2.1	2.9	0.7	60.6	6.2	33.2	0.105	0.507	24.630033	-101.371221

COAHUILA

5 CARR: Ent. Morelos - Saltillo

CLAVE: 00149

RUTA: MEX-054

AÑO: 2013

LUGAR	ESTACION				CLASIFICACION VEHICULAR EN PORCIENTO														COORDENADAS	
	KM	TE	SC	TDPA	M	A	B	C2	C3	T3S2	T3S3	T3S2R4	OTROS	A	B	C	K'	D	LATITUD	LONGITUD
T. Izq. Concepción del Oro	240.00	3	2	2436	0.4	56.0	6.9	13.3	4.1	13.2	2.1	3.2	0.8	56.4	6.9	36.7	0.100	0.507	24.630071	-101.371316
Lim. Edos. Term. Zac. Ppia. Coah.	266.50																			
Agua Nueva	322.00	1	0	4511	1.5	75.3	6.2	6.6	2.7	4.5	1.7	0.5	1.0	76.8	6.2	17.0	0.076	0.505	25.177688	-101.095070
T. Der. La Trinidad	333.00	3	0	11151	0.6	76.6	6.2	6.2	2.5	5.0	1.5	0.5	0.9	77.2	6.2	16.6	0.111	0.500	25.292064	-101.084421
X. C. Libramiento de Saltillo	348.00	1	1	14779	1.3	81.4	5.2	5.9	0.9	3.2	0.8	0.4	0.9	82.7	5.2	12.1	0.080	0.507	25.358444	-101.019694
X. C. Libramiento de Saltillo	348.00	1	2	15158	1.0	78.2	6.4	6.8	1.2	4.3	0.9	0.4	0.8	79.2	6.4	14.4	0.087	0.507	25.358389	-101.020000
Saltillo	354.00	1	1	12388	1.1	81.1	4.1	5.4	0.6	6.8	0.6	0.2	0.1	82.2	4.1	13.7	0.077	0.526	25.387797	-101.006300
Saltillo	354.00	1	2	12268	1.0	79.6	4.3	6.0	0.6	7.6	0.6	0.2	0.1	80.6	4.3	15.1	0.077	0.526	25.387846	-101.006429

6 CARR: Gregorio García - Francisco I. Madero

CLAVE: 00110

RUTA: MEX-040

AÑO: 2013

LUGAR	ESTACION				CLASIFICACION VEHICULAR EN PORCIENTO														COORDENADAS	
	KM	TE	SC	TDPA	M	A	B	C2	C3	T3S2	T3S3	T3S2R4	OTROS	A	B	C	K'	D	LATITUD	LONGITUD
T. C. Gómez Palacio - Tlahualilco	0.00																			
Lim. Edos. Term. Dgo. Ppia. Coah.	3.60																			
Francisco I. Madero	9.60	1	0	5908	4.3	82.3	0.9	6.8	1.8	2.0	0.8	0.7	0.4	86.6	0.9	12.5	0.083	0.503	25.772665	-103.289191

7 CARR: Huachichil - La Encantada

CLAVE: 05002

RUTA: MEX-057

AÑO: 2013

LUGAR	ESTACION				CLASIFICACION VEHICULAR EN PORCIENTO														COORDENADAS	
	KM	TE	SC	TDPA	M	A	B	C2	C3	T3S2	T3S3	T3S2R4	OTROS	A	B	C	K'	D	LATITUD	LONGITUD
T. C. Aut. Puerto México - Ojo Caliente	0.00	3	0	2180	1.1	63.5	7.5	6.5	3.9	12.2	2.4	2.0	0.9	64.6	7.5	27.9	0.083	0.501	25.231127	-100.826375
T. C. Ent. Morelos - Saltillo	41.00	1	0	2170	1.2	64.3	8.2	7.3	2.7	11.6	2.6	1.9	0.2	65.5	8.2	26.3	0.073	0.508	25.256157	-101.081064

8 CARR: Libramiento Allende - Nava

CLAVE: 05518

RUTA: MEX-057

AÑO: 2013

LUGAR	ESTACION				CLASIFICACION VEHICULAR EN PORCIENTO														COORDENADAS	
	KM	TE	SC	TDPA	M	A	B	C2	C3	T3S2	T3S3	T3S2R4	OTROS	A	B	C	K'	D	LATITUD	LONGITUD
T. C. Monclova - Piedras Negras	0.00	3	1	3416	0.3	64.4	1.3	12.4	2.3	11.7	4.2	3.0	0.4	64.7	1.3	34.0	0.072	0.504	28.329031	-100.885265
T. C. Monclova - Piedras Negras	0.00	3	2	3474	0.3	61.7	1.5	13.4	2.4	12.2	4.7	3.4	0.4	62.0	1.5	36.5	0.084	0.504	28.329097	-100.885447
X. Der. Allende - Izq. Morelos	6.06	3	1	4447	0.8	71.4	2.6	10.4	1.5	7.3	3.2	1.9	0.9	72.2	2.6	25.2	0.082	0.517	28.377190	-100.858942
X. Der. Allende - Izq. Morelos	6.06	3	2	4152	1.2	67.8	2.9	12.4	1.7	7.7	3.3	2.1	0.9	69.0	2.9	28.1	0.073	0.517	28.377296	-100.859088
T. C. Monclova - Piedras Negras	17.55	1	1	4191	0.4	70.8	2.1	11.9	1.7	6.5	3.5	2.5	0.6	71.2	2.1	26.7	0.086	0.502	28.433424	-100.772530
T. C. Monclova - Piedras Negras	17.55	1	2	4155	0.4	67.7	2.1	13.6	1.8	7.2	3.9	2.8	0.5	68.1	2.1	29.8	0.092	0.502	28.433436	-100.773028

COAHUILA

9 CARR: Monclova - Piedras Negras

CLAVE: 05407

RUTA: MEX-057

AÑO: 2013

LUGAR	ESTACION				CLASIFICACION VEHICULAR EN PORCIENTO													COORDENADAS		
	KM	TE	SC	TDPA	M	A	B	C2	C3	T3S2	T3S3	T3S2R4	OTROS	A	B	C	K'	D	LATITUD	LONGITUD
Monclova	0.00	3	1	9598	1.5	84.9	3.2	5.8	0.6	1.3	1.6	0.3	0.8	86.4	3.2	10.4	0.073	0.501	26.954631	-101.411232
Monclova	0.00	3	2	9574	1.2	83.8	3.5	6.4	0.7	1.5	1.7	0.4	0.8	85.0	3.5	11.5	0.075	0.501	26.954724	-101.411482
T. Der. Libramiento de Monclova	10.80	3	1	4163	0.7	81.9	2.8	7.6	1.9	1.5	1.4	1.7	0.5	82.6	2.8	14.6	0.082	0.509	26.979824	-101.374488
T. Der. Libramiento de Monclova	10.80	3	2	4019	0.5	80.6	3.2	8.0	2.3	1.6	1.4	1.9	0.5	81.1	3.2	15.7	0.084	0.509	26.979974	-101.374680
T. Der. Progreso	61.50	1	1	2952	0.4	65.4	2.4	14.4	2.5	8.4	2.0	3.6	0.9	65.8	2.4	31.8	0.072	0.501	27.385157	-101.215256
T. Der. Progreso	61.50	1	2	2937	0.3	62.8	2.6	15.1	2.6	9.6	2.4	3.8	0.8	63.1	2.6	34.3	0.088	0.501	27.385242	-101.215484
T. Izq. Palau	88.50	1	1	2900	0.4	65.0	2.8	13.8	2.3	9.3	2.3	3.5	0.6	65.4	2.8	31.8	0.076	0.502	27.634768	-101.181925
T. Izq. Palau	88.50	1	2	2922	0.6	62.3	3.2	14.7	2.7	9.6	2.4	3.9	0.6	62.9	3.2	33.9	0.072	0.502	27.634761	-101.182155
T. Izq. Palau	88.50	3	1	3238	0.6	71.2	3.2	7.7	2.1	9.1	2.6	2.9	0.6	71.8	3.2	25.0	0.075	0.501	27.642333	-101.184084
T. Izq. Palau	88.50	3	2	3225	0.4	68.2	3.4	9.3	2.2	9.9	3.0	3.0	0.6	68.6	3.4	28.0	0.077	0.501	27.642260	-101.184273
T. Der. Sabinas (2º Acceso)	115.00	1	1	6216	1.0	76.1	1.1	9.1	3.2	5.3	2.0	1.4	0.8	77.1	1.1	21.8	0.079	0.502	27.867723	-101.135026
T. Der. Sabinas (2º Acceso)	115.00	1	2	6258	1.1	73.7	1.3	9.7	3.6	6.1	2.1	1.5	0.9	74.8	1.3	23.9	0.084	0.502	27.867781	-101.135283
Agujita	118.85	1	1	11563	1.4	82.4	0.7	8.5	0.9	2.6	1.8	0.9	0.8	83.8	0.7	15.5	0.066	0.511	27.881373	-101.143554
Agujita	118.85	1	2	11052	1.1	80.7	0.8	9.5	1.1	3.0	2.0	1.0	0.8	81.8	0.8	17.4	0.074	0.511	27.881243	-101.143702
T. Izq. Nueva Rosita (1º Acceso)	126.30	3	0	4594	0.5	69.4	1.4	6.4	2.9	9.3	5.6	3.4	1.1	69.9	1.4	28.7	0.069	0.508	27.963573	-101.196911
T. Izq. Libramiento de Allende	182.00	1	0	4702	0.4	60.2	1.5	13.7	1.9	12.6	5.9	3.1	0.7	60.6	1.5	37.9	0.069	0.508	28.311733	-100.912119
Allende	187.20	3	1	4616	1.4	77.1	3.6	9.5	3.5	3.3	0.9	0.3	0.4	78.5	3.6	17.9	0.070	0.505	28.365635	-100.861093
Allende	187.20	3	2	4523	1.3	74.5	4.1	11.2	3.6	3.5	1.1	0.3	0.4	75.8	4.1	20.1	0.067	0.505	28.365539	-100.861261
Nava	206.85	1	1	2317	1.8	80.9	2.4	13.5	0.7	0.5	0.2	0.0	0.0	82.7	2.4	14.9	0.069	0.517	28.421531	-100.788571
Nava	206.85	1	2	2164	1.8	79.9	2.8	13.9	0.8	0.6	0.2	0.0	0.0	81.7	2.8	15.5	0.077	0.517	28.421331	-100.788548
Nava	206.85	3	1	5958	0.9	70.1	3.0	13.4	1.7	6.1	2.9	1.4	0.5	71.0	3.0	26.0	0.103	0.507	28.443170	-100.755121
Nava	206.85	3	2	5782	0.5	66.7	3.2	15.8	1.8	6.8	3.2	1.5	0.5	67.2	3.2	29.6	0.094	0.507	28.443062	-100.755622
T. Der. Guerrero	240.28	1	1	8041	1.5	83.7	1.4	7.3	1.5	2.7	0.8	0.6	0.5	85.2	1.4	13.4	0.084	0.514	28.640407	-100.559294
T. Der. Guerrero	240.28	1	2	7592	1.2	82.0	1.6	8.4	1.7	3.2	0.8	0.6	0.5	83.2	1.6	15.2	0.090	0.514	28.640715	-100.559373
Piedras Negras	248.00																			

10 CARR: Monclova - San Pedro de Las Colonias

CLAVE: 05062

RUTA: MEX-030

AÑO: 2013

LUGAR	ESTACION				CLASIFICACION VEHICULAR EN PORCIENTO													COORDENADAS		
	KM	TE	SC	TDPA	M	A	B	C2	C3	T3S2	T3S3	T3S2R4	OTROS	A	B	C	K'	D	LATITUD	LONGITUD
Monclova	0.00																			
Frontera	2.00	3	1	8906	2.0	86.5	2.2	5.0	1.0	1.7	0.7	0.5	0.4	88.5	2.2	9.3	0.073	0.500	26.958563	-101.461104
Frontera	2.00	3	2	8900	1.6	86.0	2.3	5.5	1.2	1.7	0.8	0.5	0.4	87.6	2.3	10.1	0.070	0.500	26.958432	-101.461265
8 de Enero	11.00	3	1	6081	1.3	86.2	2.4	4.5	1.1	2.0	0.9	0.9	0.7	87.5	2.4	10.1	0.092	0.501	27.005994	-101.498757
8 de Enero	11.00	3	2	6104	1.8	84.3	2.6	4.8	1.2	2.3	1.1	1.0	0.9	86.1	2.6	11.3	0.090	0.501	27.005906	-101.498862

COAHUILA

10 CARR: Monclova - San Pedro de Las Colonias

CLAVE: 05062

RUTA: MEX-030

AÑO: 2013

LUGAR	ESTACION				CLASIFICACION VEHICULAR EN PORCIENTO													COORDENADAS		
	KM	TE	SC	TDPA	M	A	B	C2	C3	T3S2	T3S3	T3S2R4	OTROS	A	B	C	K'	D	LATITUD	LONGITUD
Nadadores	27.00	3	1	2135	0.6	78.5	3.2	7.8	2.2	4.6	1.5	1.3	0.3	79.1	3.2	17.7	0.145	0.503	27.031392	-101.602165
Nadadores	27.00	3	2	2112	0.7	76.4	3.2	8.6	2.4	5.1	1.7	1.6	0.3	77.1	3.2	19.7	0.111	0.503	27.031275	-101.602205
Sacramento	45.27	1	1	1714	0.6	86.1	2.3	3.1	1.3	3.1	1.3	1.6	0.6	86.7	2.3	11.0	0.127	0.506	27.007912	-101.719454
Sacramento	45.27	1	2	1756	0.6	84.5	2.6	3.4	1.5	3.5	1.5	1.7	0.7	85.1	2.6	12.3	0.160	0.506	27.007905	-101.719263
T. Der. La Madrid	51.00	3	1	1100	0.5	72.2	2.4	12.3	2.3	6.0	1.6	2.1	0.6	72.7	2.4	24.9	0.095	0.507	27.019753	-101.800740
T. Der. La Madrid	51.00	3	2	1130	0.8	70.1	2.7	12.8	2.4	6.6	1.7	2.3	0.6	70.9	2.7	26.4	0.111	0.507	27.019594	-101.800849
Cuatro Ciénegas	80.15	3	0	1112	0.7	75.9	3.6	5.3	3.5	4.2	2.7	3.3	0.8	76.6	3.6	19.8	0.116	0.504	26.979626	-102.066141
San Pedro de Las Colonias	267.00	1	1	1286	2.9	58.4	2.9	12.9	6.6	9.0	2.8	3.4	1.1	61.3	2.9	35.8	0.074	0.503	25.793806	-102.979611
San Pedro de Las Colonias	267.00	1	2	1300	2.8	55.2	3.1	13.5	7.0	10.2	3.1	3.9	1.2	58.0	3.1	38.9	0.072	0.503	25.793778	-102.979444

11 CARR: Monterrey - Castaños

CLAVE: 00128

RUTA: MEX-053

AÑO: 2013

LUGAR	ESTACION				CLASIFICACION VEHICULAR EN PORCIENTO													COORDENADAS		
	KM	TE	SC	TDPA	M	A	B	C2	C3	T3S2	T3S3	T3S2R4	OTROS	A	B	C	K'	D	LATITUD	LONGITUD
T. C. Monterrey - Nuevo Laredo	0.00	3	0	14246	3.3	74.7	4.6	6.8	4.8	2.7	1.5	0.9	0.7	78.0	4.6	17.4	0.089	0.501	25.808364	-100.282193
X. C. Libramiento Noroeste de Monterrey	3.46	3	1	10861	0.7	71.2	3.4	8.0	5.9	5.2	3.3	1.5	0.8	71.9	3.4	24.7	0.089	0.501	25.831439	-100.307103
X. C. Libramiento Noroeste de Monterrey	3.46	3	2	10913	1.1	67.8	3.7	8.8	6.8	5.5	3.7	1.6	1.0	68.9	3.7	27.4	0.092	0.501	25.831321	-100.307160
T. Der. Villa del Carmen	13.80	1	1	6991	1.2	75.2	3.6	6.5	2.8	5.2	2.8	2.0	0.7	76.4	3.6	20.0	0.090	0.505	25.896679	-100.352028
T. Der. Villa del Carmen	13.80	1	2	6866	0.5	73.4	4.2	7.0	3.1	5.6	3.3	2.1	0.8	73.9	4.2	21.9	0.094	0.505	25.896590	-100.352092
T. Izq. Hidalgo	24.78	1	0	13133	0.7	73.9	2.8	8.6	2.5	5.5	3.0	2.3	0.7	74.6	2.8	22.6	0.063	0.513	25.953904	-100.422655
T. Izq. Hidalgo	24.78	3	0	8146	0.4	67.2	3.6	8.5	2.7	9.0	5.0	2.8	0.8	67.6	3.6	28.8	0.067	0.503	25.991484	-100.457946
T. Izq. Mina	34.75	1	0	7056	1.5	65.6	3.9	8.7	2.8	9.1	4.8	2.8	0.8	67.1	3.9	29.0	0.070	0.505	26.000576	-100.512837
T. Izq. Espinazo	91.90	1	0	3319	0.5	62.4	3.7	9.7	2.9	8.4	6.0	5.5	0.9	62.9	3.7	33.4	0.083	0.502	26.362501	-100.878407
T. Izq. Espinazo	91.90	3	0	3249	1.6	62.0	4.5	7.7	4.0	9.4	5.3	4.5	1.0	63.6	4.5	31.9	0.082	0.502	26.364907	-100.882397
Lim. Edos. Term. N. L. Ppia. Coah.	115.90																			
T. C. Saltillo - Monclova	155.90	1	1	2025	3.4	68.0	2.4	7.9	2.5	6.3	5.3	3.4	0.8	71.4	2.4	26.2	0.080	0.503	26.693358	-101.383726
T. C. Saltillo - Monclova	155.90	1	2	2048	0.2	67.7	2.7	9.0	2.7	6.8	6.1	3.9	0.9	67.9	2.7	29.4	0.087	0.503	26.692159	-101.382821

12 CARR: Morelos - Cd. Acuña

CLAVE: 05029

RUTA: MEX-029

AÑO: 2013

LUGAR	ESTACION				CLASIFICACION VEHICULAR EN PORCIENTO													COORDENADAS		
	KM	TE	SC	TDPA	M	A	B	C2	C3	T3S2	T3S3	T3S2R4	OTROS	A	B	C	K'	D	LATITUD	LONGITUD
Morelos	0.00	3	1	2958	2.2	77.6	2.8	12.1	1.0	3.0	0.8	0.3	0.2	79.8	2.8	17.4	0.076	0.516	28.418887	-100.890876
Morelos	0.00	3	2	2770	1.3	76.3	3.1	13.6	1.0	3.4	0.8	0.3	0.2	77.6	3.1	19.3	0.075	0.516	28.418832	-100.891028
T. Izq. El Remolino	34.00	1	0	1168	0.1	71.2	1.8	13.6	2.2	8.8	1.2	0.9	0.2	71.3	1.8	26.9	0.118	0.500	28.707622	-100.911533

COAHUILA

12 CARR: Morelos - Cd. Acuña

CLAVE: 05029

RUTA: MEX-029

AÑO: 2013

LUGAR	ESTACION				CLASIFICACION VEHICULAR EN PORCIENTO										COORDENADAS					
	KM	TE	SC	TDPA	M	A	B	C2	C3	T3S2	T3S3	T3S2R4	OTROS	A	B	C	K'	D	LATITUD	LONGITUD
T. Izq. El Remolino	34.00	3	0	1017	0.1	69.1	2.4	15.4	2.5	8.5	1.0	0.9	0.1	69.2	2.4	28.4	0.100	0.506	28.726997	-100.912243
San Carlos	69.00	1	0	1680	0.3	66.1	2.6	19.7	1.7	7.5	0.8	0.9	0.4	66.4	2.6	31.0	0.083	0.501	29.016213	-100.905116
T. Der. Piedras Negras	87.00	3	1	5014	1.5	77.4	2.9	14.2	1.1	1.9	0.5	0.2	0.3	78.9	2.9	18.2	0.082	0.508	29.296457	-100.914530
T. Der. Piedras Negras	87.00	3	2	4859	1.3	75.9	3.1	15.4	1.3	2.1	0.5	0.2	0.2	77.2	3.1	19.7	0.091	0.508	29.296378	-100.914660
Cd. Acuña	104.00	1	1	5557	1.1	81.7	1.4	13.7	0.6	0.8	0.4	0.1	0.2	82.8	1.4	15.8	0.075	0.528	29.304538	-100.923671
Cd. Acuña	104.00	1	2	6212	1.2	79.9	1.6	15.0	0.7	0.9	0.4	0.1	0.2	81.1	1.6	17.3	0.085	0.528	29.304450	-100.923709

13 CARR: Nueva Rosita - Boquillas del Carmen

CLAVE: 05028

RUTA: MEX-053

AÑO: 2013

LUGAR	ESTACION				CLASIFICACION VEHICULAR EN PORCIENTO										COORDENADAS					
	KM	TE	SC	TDPA	M	A	B	C2	C3	T3S2	T3S3	T3S2R4	OTROS	A	B	C	K'	D	LATITUD	LONGITUD
Nueva Rosita	0.00	3	1	5281	1.9	78.0	1.4	11.6	1.6	1.9	2.1	0.7	0.8	79.9	1.4	18.7	0.060	0.500	27.947756	-101.243103
Nueva Rosita	0.00	3	2	5285	2.5	74.6	1.4	13.4	1.8	2.2	2.4	0.8	0.9	77.1	1.4	21.5	0.064	0.500	27.947553	-101.242916
T. Der. Santa María	14.00	3	1	2770	1.4	74.9	2.0	16.3	1.3	1.9	2.0	0.1	0.1	76.3	2.0	21.7	0.100	0.505	27.893566	-101.375263
T. Der. Santa María	14.00	3	2	2713	1.2	73.2	2.3	17.4	1.6	2.0	2.1	0.1	0.1	74.4	2.3	23.3	0.088	0.505	27.893378	-101.375265
Palau	25.00	1	1	3484	1.3	76.0	3.1	9.8	2.0	2.3	4.3	0.5	0.7	77.3	3.1	19.6	0.070	0.512	27.888602	-101.398619
Palau	25.00	1	2	3322	1.3	73.6	3.4	10.8	2.3	2.5	4.7	0.5	0.9	74.9	3.4	21.7	0.079	0.512	27.888151	-101.399889
Palau	25.00	3	1	4370	1.8	80.9	0.5	10.3	2.9	1.7	1.0	0.4	0.5	82.7	0.5	16.8	0.070	0.501	27.887415	-101.431764
Palau	25.00	3	2	4345	1.8	79.1	0.5	11.6	3.0	1.9	1.1	0.5	0.5	80.9	0.5	18.6	0.072	0.501	27.887301	-101.431690
Melchor Múzquiz	35.00	3	0	2959	1.1	72.9	1.1	18.2	2.1	2.1	1.9	0.3	0.3	74.0	1.1	24.9	0.075	0.505	27.895050	-101.531554
Boquillas del Carmen	250.00																			

14 CARR: Ojo Caliente - Santa Cruz

CLAVE: 05007

RUTA: MEX-057

AÑO: 2013

LUGAR	ESTACION				CLASIFICACION VEHICULAR EN PORCIENTO										COORDENADAS					
	KM	TE	SC	TDPA	M	A	B	C2	C3	T3S2	T3S3	T3S2R4	OTROS	A	B	C	K'	D	LATITUD	LONGITUD
T. C. Saltillo - Monterrey	0.00	3	0	5613	1.6	60.5	3.2	14.7	2.7	7.4	5.0	3.9	1.0	62.1	3.2	34.7	0.099	0.506	25.597402	-100.893280
T. C. Saltillo - Monclova	34.00	1	0	3036	1.5	48.3	5.0	25.6	2.3	7.1	3.9	5.4	0.9	49.8	5.0	45.2	0.077	0.503	25.785314	-101.105594

15 CARR: Piedras Negras - Cd. Acuña

CLAVE: 05061

RUTA: MEX-002

AÑO: 2013

LUGAR	ESTACION				CLASIFICACION VEHICULAR EN PORCIENTO										COORDENADAS					
	KM	TE	SC	TDPA	M	A	B	C2	C3	T3S2	T3S3	T3S2R4	OTROS	A	B	C	K'	D	LATITUD	LONGITUD
Piedras Negras	0.00	3	1	2285	1.5	75.2	2.7	14.4	2.2	2.6	1.0	0.2	0.2	76.7	2.7	20.6	0.071	0.503	28.730926	-100.575195
Piedras Negras	0.00	3	2	2315	2.0	71.5	3.2	16.4	2.4	2.7	1.2	0.3	0.3	73.5	3.2	23.3	0.075	0.503	28.730820	-100.575393

COAHUILA

15 CARR: Piedras Negras - Cd. Acuña

CLAVE: 05061

RUTA: MEX-002

AÑO: 2013

LUGAR	ESTACION				CLASIFICACION VEHICULAR EN PORCIENTO														COORDENADAS	
	KM	TE	SC	TDPA	M	A	B	C2	C3	T3S2	T3S3	T3S2R4	OTROS	A	B	C	K'	D	LATITUD	LONGITUD
T. C. Morelos - Cd. Acuña	83.30	1	0	2764	0.8	69.3	4.2	19.1	2.3	2.5	1.1	0.5	0.2	70.1	4.2	25.7	0.089	0.507	29.291742	-100.910845

16 CARR: Piedras Negras - Nuevo Laredo

CLAVE: 00503

RUTA: MEX-002

AÑO: 2013

LUGAR	ESTACION				CLASIFICACION VEHICULAR EN PORCIENTO														COORDENADAS	
	KM	TE	SC	TDPA	M	A	B	C2	C3	T3S2	T3S3	T3S2R4	OTROS	A	B	C	K'	D	LATITUD	LONGITUD
T. C. Monclova - Piedras Negras	0.00	3	1	3504	1.4	75.8	1.0	12.2	2.8	5.2	0.5	0.8	0.3	77.2	1.0	21.8	0.072	0.530	28.633501	-100.548129
T. C. Monclova - Piedras Negras	0.00	3	2	3953	1.2	74.7	1.0	12.6	3.2	5.6	0.6	0.8	0.3	75.9	1.0	23.1	0.082	0.530	28.633586	-100.547956
El Saucito	16.90	3	0	1229	1.4	61.9	3.2	19.1	2.8	6.7	1.6	2.9	0.4	63.3	3.2	33.5	0.079	0.506	28.501760	-100.467199
T. Der. Villa Unión	37.00	1	0	1154	0.1	64.2	3.7	17.2	2.7	8.3	0.4	3.3	0.1	64.3	3.7	32.0	0.079	0.501	28.338559	-100.390236
T. Der. Villa Unión	37.00	3	0	1106	0.4	59.1	3.8	19.8	3.3	9.1	0.8	3.6	0.1	59.5	3.8	36.7	0.071	0.503	28.333310	-100.388609
Guerrero	42.00	3	0	969	0.3	55.7	4.0	20.0	3.7	10.5	0.6	5.1	0.1	56.0	4.0	40.0	0.085	0.505	28.307662	-100.365208
Lim. Edos. Term. Coah. Ppia. N. L.	124.40																			
T. C. Monclova - Colombia	134.00	3	0	2853	1.4	65.4	3.5	11.8	4.1	9.6	1.2	2.4	0.6	66.8	3.5	29.7	0.093	0.501	27.687546	-99.776335
Lim. Edos. Term. N. L. Ppia. Tamps.	138.20																			
T. Der. Libramiento de Nuevo Laredo	157.70	1	1	4046	0.9	49.5	1.6	5.9	10.3	28.3	1.5	1.0	1.0	50.4	1.6	48.0	0.104	0.520	27.571722	-99.599513
T. Der. Libramiento de Nuevo Laredo	157.70	1	2	4373	1.2	69.8	1.5	11.5	3.9	8.8	1.5	0.9	0.9	71.0	1.5	27.5	0.089	0.520	27.571893	-99.599487
Nuevo Laredo	175.00	1	1	7400	1.1	60.8	2.7	20.6	3.8	7.8	1.4	0.7	1.1	61.9	2.7	35.4	0.090	0.505	27.542866	-99.575980
Nuevo Laredo	175.00	1	2	7269	1.8	57.5	2.7	23.3	4.5	6.5	1.7	0.8	1.2	59.3	2.7	38.0	0.113	0.505	27.542869	-99.575980

17 CARR: Saltillo - Monclova

CLAVE: 05406

RUTA: MEX-057

AÑO: 2013

LUGAR	ESTACION				CLASIFICACION VEHICULAR EN PORCIENTO														COORDENADAS	
	KM	TE	SC	TDPA	M	A	B	C2	C3	T3S2	T3S3	T3S2R4	OTROS	A	B	C	K'	D	LATITUD	LONGITUD
Saltillo	0.00																			
T. Der. Ramos Arizpe	13.00	1	0	3958	1.9	80.5	3.5	5.1	1.0	5.2	1.0	0.8	1.0	82.4	3.5	14.1	0.083	0.501	25.527322	-101.002476
T. Der. Ramos Arizpe	13.00	3	0	1699	1.8	79.1	3.5	4.1	2.6	4.2	2.7	1.5	0.5	80.9	3.5	15.6	0.102	0.514	25.529004	-101.005452
T. C. Ojo Caliente - Santa Cruz	49.60	1	0	391	1.4	65.4	4.2	15.3	2.3	9.2	2.2	0.0	0.0	66.8	4.2	29.0	0.133	0.530	25.783059	-101.111907
T. C. Ojo Caliente - Santa Cruz	49.60	3	0	3415	0.6	67.5	3.5	9.7	2.0	8.2	3.5	4.4	0.6	68.1	3.5	28.4	0.090	0.505	25.796330	-101.115764
T. Der. Paredón	64.00	1	0	3414	0.5	67.7	3.6	8.2	2.1	8.8	3.6	4.8	0.7	68.2	3.6	28.2	0.081	0.512	25.909265	-101.150636
T. Der. Paredón	64.00	3	0	3354	0.5	70.4	2.9	6.9	1.6	8.3	3.9	4.6	0.9	70.9	2.9	26.2	0.090	0.505	25.917589	-101.155193
T. Izq. Hipólito	78.00	1	0	3312	0.4	66.8	4.2	9.0	1.8	9.3	3.6	4.4	0.5	67.2	4.2	28.6	0.094	0.508	25.972088	-101.261393
T. Izq. Hipólito	78.00	3	0	3304	1.3	68.4	2.6	7.8	2.5	8.3	3.4	4.9	0.8	69.7	2.6	27.7	0.093	0.501	25.975015	-101.264914
T. Izq. Libramiento Lic. Carlos Salinas De Gortari	122.70	1	1	12545	1.7	82.5	1.7	7.4	2.0	1.8	1.6	0.7	0.6	84.2	1.7	14.1	0.087	0.501	26.856329	-101.426349
T. Izq. Libramiento Lic. Carlos Salinas De Gortari	122.70	1	2	12584	1.1	81.7	1.7	8.4	2.2	1.8	1.7	0.8	0.6	82.8	1.7	15.5	0.078	0.501	26.853409	-101.426171

COAHUILA

17 CARR: Saltillo - Monclova

CLAVE: 05406

RUTA: MEX-057

AÑO: 2013

LUGAR	ESTACION				CLASIFICACION VEHICULAR EN PORCIENTO														COORDENADAS	
	KM	TE	SC	TDPA	M	A	B	C2	C3	T3S2	T3S3	T3S2R4	OTROS	A	B	C	K'	D	LATITUD	LONGITUD
T. Izq. Libramiento Lic. Carlos Salinas De Gortari	122.70	3	1	18351	1.2	86.3	1.1	5.5	1.8	1.7	1.9	0.3	0.2	87.5	1.1	11.4	0.087	0.510	26.863139	-101.427110
T. Izq. Libramiento Lic. Carlos Salinas De Gortari	122.70	3	2	19128	1.2	85.1	1.1	6.5	1.9	1.8	1.9	0.3	0.2	86.3	1.1	12.6	0.077	0.510	26.863153	-101.427466
T. Der. Monterrey	164.79	1	0	3403	0.3	74.8	3.2	6.8	2.6	6.0	3.4	1.9	1.0	75.1	3.2	21.7	0.110	0.500	26.686068	-101.387636
T. Der. Monterrey	164.79	3	1	3680	0.4	76.5	2.6	6.2	2.4	6.2	3.3	1.7	0.7	76.9	2.6	20.5	0.102	0.508	26.704743	-101.391237
T. Der. Monterrey	164.79	3	2	3794	0.3	74.6	3.1	6.6	2.8	6.6	3.4	1.9	0.7	74.9	3.1	22.0	0.090	0.508	26.704376	-101.391416
T. Der. Libramiento de Castaños (1º Acceso)	175.20	1	1	8195	1.9	79.5	2.4	5.2	1.9	3.8	2.8	1.7	0.8	81.4	2.4	16.2	0.076	0.503	26.778697	-101.416105
T. Der. Libramiento de Castaños (1º Acceso)	175.20	1	2	8297	0.7	78.7	2.6	6.0	2.1	4.0	3.1	1.9	0.9	79.4	2.6	18.0	0.074	0.503	26.778625	-101.416275
T. Der. Libramiento de Castaños (2º Acceso)	177.10	3	1	8584	0.9	78.4	2.5	6.9	2.4	4.0	2.6	1.7	0.6	79.3	2.5	18.2	0.077	0.500	26.802154	-101.421490
T. Der. Libramiento de Castaños (2º Acceso)	177.10	3	2	8597	1.3	74.9	2.6	8.3	2.6	4.6	2.9	2.0	0.8	76.2	2.6	21.2	0.077	0.500	26.802534	-101.421724
Monclova	192.00	1	1	17763	1.1	89.7	1.7	4.4	0.9	0.9	1.2	0.1	0.0	90.8	1.7	7.5	0.083	0.505	26.875852	-101.426575
Monclova	192.00	1	2	17384	1.4	88.9	1.8	4.6	1.0	1.0	1.2	0.1	0.0	90.3	1.8	7.9	0.088	0.505	26.875988	-101.426918

18 CARR: Saltillo - Monterrey

CLAVE: 00087

RUTA: MEX-040

AÑO: 2013

LUGAR	ESTACION				CLASIFICACION VEHICULAR EN PORCIENTO														COORDENADAS	
	KM	TE	SC	TDPA	M	A	B	C2	C3	T3S2	T3S3	T3S2R4	OTROS	A	B	C	K'	D	LATITUD	LONGITUD
T. C. Saltillo - Arteaga	0.00																			
T. Izq. Zinacamex	4.25	3	1	36421	0.5	87.6	2.8	4.2	0.8	1.3	1.7	0.3	0.8	88.1	2.8	9.1	0.075	0.506	25.483480	-100.971693
T. Izq. Zinacamex	4.25	3	2	35544	0.4	86.3	3.2	4.6	1.0	1.4	1.9	0.3	0.9	86.7	3.2	10.1	0.092	0.506	25.481119	-100.973251
Ramos Arizpe	11.30	1	1	29143	0.5	87.6	2.5	5.5	0.9	1.4	1.0	0.3	0.3	88.1	2.5	9.4	0.102	0.503	25.516027	-100.957320
Ramos Arizpe	11.30	1	2	28776	0.8	86.0	2.8	6.3	1.1	1.4	1.0	0.3	0.3	86.8	2.8	10.4	0.107	0.503	25.516168	-100.957665
T. Der. Aeropuerto	13.00	3	1	22187	2.7	71.9	3.4	9.2	3.2	5.1	1.8	1.3	1.4	74.6	3.4	22.0	0.104	0.517	25.554382	-100.928084
T. Der. Aeropuerto	13.00	3	2	20707	1.1	71.1	3.5	10.1	3.5	5.6	2.1	1.5	1.5	72.2	3.5	24.3	0.123	0.517	25.554384	-100.928082
T. Der. Libramiento J.L.P.	16.00	3	1	18310	0.8	78.8	5.0	6.8	1.4	4.8	1.1	0.7	0.6	79.6	5.0	15.4	0.135	0.502	25.566026	-100.914253
T. Der. Libramiento J.L.P.	16.00	3	2	18485	1.4	75.4	5.1	8.0	1.6	5.5	1.3	0.9	0.8	76.8	5.1	18.1	0.114	0.502	25.566142	-100.914403
Ojo Caliente	26.30	1	1	14779	2.5	54.7	4.0	9.0	3.1	20.8	2.7	2.4	0.8	57.2	4.0	38.8	0.074	0.500	25.610648	-100.844442
Ojo Caliente	26.30	1	2	14793	1.4	51.8	4.1	10.4	3.4	22.3	3.0	2.8	0.8	53.2	4.1	42.7	0.073	0.500	25.613143	-100.845060
Lim. Edos. Term. Coah. Ppia. N. L.	33.00																			
T. Izq. Libramiento Noroeste de Monterrey	54.00	1	1	15499	1.5	55.1	3.2	8.1	2.6	21.7	3.8	3.2	0.8	56.6	3.2	40.2	0.068	0.515	25.698244	-100.562951
T. Izq. Libramiento Noroeste de Monterrey	54.00	1	2	16475	2.1	47.2	3.7	9.5	3.0	25.6	4.5	3.6	0.8	49.3	3.7	47.0	0.066	0.515	25.698732	-100.562817
T. Der. Santa Catarina (1º Acceso)	62.46	1	1	27392	1.0	80.8	2.9	8.4	1.7	2.6	1.3	0.8	0.5	81.8	2.9	15.3	0.089	0.501	25.687118	-100.494091
T. Der. Santa Catarina (1º Acceso)	62.46	1	2	27498	0.6	79.9	3.0	8.9	1.9	2.7	1.5	1.0	0.5	80.5	3.0	16.5	0.083	0.501	25.687169	-100.494099
Ppia. Monterrey	79.20	1	1	46936	0.7	78.4	4.1	7.6	1.7	2.6	3.3	0.8	0.8	79.1	4.1	16.8	0.067	0.510	25.674346	-100.425400
Ppia. Monterrey	79.20	1	2	48761	0.4	77.6	4.1	8.1	1.7	2.8	3.7	0.8	0.8	78.0	4.1	17.9	0.077	0.510	25.674674	-100.425386

COAHUILA

19 CARR: Saltillo - Torreón

CLAVE: 05086

RUTA: MEX-040

AÑO: 2013

LUGAR	ESTACION				CLASIFICACION VEHICULAR EN PORCIENTO													COORDENADAS			
	KM	TE	SC	TDPA	M	A	B	C2	C3	T3S2	T3S3	T3S2R4	OTROS	A	B	C	K'	D	LATITUD	LONGITUD	
Saltillo	0.00																				
T. Der. Monclova	6.10	3	1	4386	0.9	73.4	3.2	16.0	2.1	2.9	0.6	0.6	0.3	74.3	3.2	22.5	0.101	0.501	25.454925	-101.037371	
T. Der. Monclova	6.10	3	2	4363	0.8	70.5	3.6	18.1	2.3	3.1	0.7	0.6	0.3	71.3	3.6	25.1	0.092	0.501	25.454751	-101.037418	
T. Izq. General Cepeda	44.14	1	0	3971	0.6	54.0	3.2	14.4	2.8	15.7	5.2	3.2	0.9	54.6	3.2	42.2	0.066	0.502	25.504629	-101.374801	
T. Izq. General Cepeda	44.14	3	0	3321	0.6	47.4	6.1	14.8	3.0	16.8	6.7	3.7	0.9	48.0	6.1	45.9	0.068	0.511	25.512690	-101.382486	
T. Der. Estación Marte	91.20	1	0	2716	1.3	34.7	4.5	11.5	5.1	27.4	9.6	4.7	1.2	36.0	4.5	59.5	0.088	0.509	25.658845	-101.764308	
Ent. Paila	127.90	1	1	3762	0.3	59.1	4.1	8.2	2.7	15.3	4.8	4.8	0.7	59.4	4.1	36.5	0.091	0.512	25.649400	-102.135464	
Ent. Paila	127.90	1	2	3583	0.4	54.8	4.6	9.4	3.3	16.4	4.9	5.5	0.7	55.2	4.6	40.2	0.076	0.512	25.649117	-102.135575	
T. Der. San Pedro de Las Colonias (La Cuchilla)	204.58	1	1	2723	0.5	49.9	5.2	8.4	2.7	19.9	5.6	6.8	1.0	50.4	5.2	44.4	0.106	0.505	25.632427	-102.866671	
T. Der. San Pedro de Las Colonias (La Cuchilla)	204.58	1	2	2673	3.2	41.7	5.7	9.1	2.9	22.7	6.5	7.2	1.0	44.9	5.7	49.4	0.092	0.505	25.625268	-102.865416	
Emiliano Zapata	221.68	1	0	1836	0.5	34.8	3.2	12.8	5.7	27.9	9.0	4.8	1.3	35.3	3.2	61.5	0.064	0.501	25.497512	-102.943132	
Emiliano Zapata	221.68	3	0	2548	0.6	45.4	3.4	13.6	4.4	21.0	7.0	3.5	1.1	46.0	3.4	50.6	0.062	0.501	25.489021	-102.955072	
T. Der. Libramiento de Matamoros (1º Acceso)	246.80	1	0	6025	2.7	59.3	5.2	13.1	3.2	10.5	3.3	1.6	1.1	62.0	5.2	32.8	0.090	0.505	25.526358	-103.212581	
T. Der. Libramiento de Matamoros (1º Acceso)	246.80	3	1	4033	5.2	78.0	2.9	10.8	1.3	0.9	0.6	0.1	0.2	83.2	2.9	13.9	0.085	0.504	25.527927	-103.218392	
T. Der. Libramiento de Matamoros (1º Acceso)	246.80	3	2	4097	4.1	78.6	3.0	11.0	1.3	1.1	0.6	0.1	0.2	82.7	3.0	14.3	0.084	0.504	25.527927	-103.218392	
Matamoros	252.80	3	1	7918	4.0	90.3	0.9	3.2	0.1	0.8	0.5	0.0	0.2	94.3	0.9	4.8	0.069	0.508	25.534787	-103.247576	
Matamoros	252.80	3	2	8162	2.2	91.7	0.9	3.6	0.1	0.8	0.5	0.0	0.2	93.9	0.9	5.2	0.070	0.508	25.534787	-103.247576	
T. Der. Libramiento de Matamoros (2º Acceso)	253.12	3	1	10806	3.1	73.8	3.3	7.5	1.8	5.7	2.1	1.6	1.1	76.9	3.3	19.8	0.068	0.503	25.535184	-103.256658	
T. Der. Libramiento de Matamoros (2º Acceso)	253.12	3	2	10945	2.9	71.6	3.4	8.6	2.0	6.3	2.2	1.8	1.2	74.5	3.4	22.1	0.072	0.503	25.535177	-103.256623	
T. Der. Libramiento de Torreón	264.50	3	1	34692	2.8	86.2	1.4	2.9	0.6	2.1	2.9	0.6	0.5	89.0	1.4	9.6	0.074	0.503	25.535115	-103.378542	
T. Der. Libramiento de Torreón	264.50	3	2	34257	3.2	84.9	1.6	3.0	0.6	2.4	3.2	0.6	0.5	88.1	1.6	10.3	0.068	0.503	25.534920	-103.378559	
Torreón	291.00																				

20 CARR: Libramiento Norponiente de Saltillo (Cuota)

CLAVE: 05022

RUTA: MEX-S30

AÑO: 2013

LUGAR	ESTACION				CLASIFICACION VEHICULAR EN PORCIENTO													COORDENADAS		
	KM	TE	SC	TDPA	M	A	B	C2	C3	T3S2	T3S3	T3S2R4	OTROS	A	B	C	K'	D	LATITUD	LONGITUD
T. C. Ent. Morelos - Saltillo	0.00	3	0	4776	2.6	30.1	6.0	5.8	4.6	32.6	7.2	10.2	0.9	32.7	6.0	61.3	0.065	0.514	25.289088	-101.091195
X. C. Saltillo - Torreón	22.44	1	0	3085	2.0	40.2	5.5	6.2	5.1	27.3	5.4	7.4	0.9	42.2	5.5	52.3	0.074	0.511	25.444252	-101.067952
X. C. Saltillo - Torreón	22.44	3	0	7031	0.6	43.7	3.9	4.4	6.0	26.5	5.8	8.0	1.1	44.3	3.9	51.8	0.075	0.542	25.459736	-101.058786
X. C. Saltillo - Monclova	32.44	1	0	6456	1.0	40.8	6.0	6.4	3.5	27.9	5.3	8.0	1.1	41.8	6.0	52.2	0.075	0.508	25.516229	-101.001365
X. C. Saltillo - Monclova	32.44	3	0	6162	1.0	41.9	5.1	6.4	2.9	26.6	5.9	8.9	1.3	42.9	5.1	52.0	0.076	0.506	25.526597	-100.985773
Ojo Caliente	46.21	1	0	5237	0.6	35.0	5.6	6.4	3.4	32.5	6.0	9.5	1.0	35.6	5.6	58.8	0.068	0.510	25.608120	-100.919341

COAHUILA

21 CARR: Libramiento Oriente de Saltillo (Cuota)

CLAVE: 00115

RUTA: MEX-057D

AÑO: 2013

LUGAR	ESTACION				CLASIFICACION VEHICULAR EN PORCIENTO														COORDENADAS		
	KM	TE	SC	TDPA	M	A	B	C2	C3	T3S2	T3S3	T3S2R4	OTROS	A	B	C	K'	D	LATITUD	LONGITUD	
Ent. La Carbonera	0.00																				
Caseta de Cobro Carbonera	12.30	2	1	1921	0.2	33.2	4.2	5.2	4.7	31.1	7.5	11.6	2.3	33.4	4.2	62.4	0.072	0.500	25.516223	-100.866625	
Caseta de Cobro Carbonera	12.30	2	2	1921	0.2	33.2	4.2	5.2	4.7	31.1	7.5	11.6	2.3	33.4	4.2	62.4	0.072	0.500	25.516223	-100.866625	
Caseta de Cobro Carbonera	12.30	3	1	6769	2.2	40.5	5.4	7.8	3.4	29.9	4.1	6.0	0.7	42.7	5.4	51.9	0.076	0.501	25.515010	-100.866947	
Caseta de Cobro Carbonera	12.30	3	2	6746	1.2	32.2	5.6	8.6	4.1	36.1	4.8	6.6	0.8	33.4	5.6	61.0	0.057	0.501	25.515052	-100.867090	
T. C. Saltillo - Monterrey	21.00																				

22 CARR: Puerto México - La Carbonera (Cuota)

CLAVE: 00115

RUTA: MEX-057D

AÑO: 2013

LUGAR	ESTACION				CLASIFICACION VEHICULAR EN PORCIENTO														COORDENADAS		
	KM	TE	SC	TDPA	M	A	B	C2	C3	T3S2	T3S3	T3S2R4	OTROS	A	B	C	K'	D	LATITUD	LONGITUD	
Ent. Puerto México	202.00																				
Caseta de Cobro Los Chorros	203.64	2	1	5476	0.1	36.2	5.8	3.8	2.5	41.3	3.3	6.1	0.9	36.3	5.8	57.9	0.076	0.500	25.186795	-100.732080	
Caseta de Cobro Los Chorros	203.64	2	2	5476	0.1	36.2	5.8	3.8	2.5	41.3	3.3	6.1	0.9	36.3	5.8	57.9	0.076	0.500	25.186795	-100.732080	
Lim. Edos. Term. N. L. Ppia. Coah.	204.07																				
Lim. Edos. Term. Coah. Ppia. N. L.	204.50																				
Lim. Edos. Term. N. L. Ppia. Coah.	205.76																				
T. Der. San Antonio de Las Alazanas	224.94	1	1	7558	1.8	34.4	4.4	7.8	3.2	37.6	4.2	5.1	1.5	36.2	4.4	59.4	0.055	0.511	25.345654	-100.794650	
T. Der. San Antonio de Las Alazanas	224.94	1	2	7228	1.6	33.1	4.9	8.2	3.4	36.9	4.6	5.7	1.6	34.7	4.9	60.4	0.064	0.511	25.345659	-100.794638	
T. Der. San Antonio de Las Alazanas	224.94	3	1	8106	1.2	33.3	5.4	8.3	3.2	38.2	3.6	4.8	2.0	34.5	5.4	60.1	0.061	0.523	25.351539	-100.794358	
T. Der. San Antonio de Las Alazanas	224.94	3	2	7400	1.5	30.1	5.9	9.2	3.7	38.0	4.1	5.6	1.9	31.6	5.9	62.5	0.055	0.523	25.351539	-100.794361	
Los Lirios	226.94	3	1	8985	1.4	35.4	3.6	8.2	2.4	40.0	4.0	4.4	0.6	36.8	3.6	59.6	0.080	0.501	25.407639	-100.800686	
Los Lirios	226.94	3	2	9018	1.2	30.8	4.4	9.3	2.7	41.5	4.2	5.3	0.6	32.0	4.4	63.6	0.085	0.501	25.407639	-100.800694	
Ent. La Carbonera	239.06																				

23 CARR: Saltillo - Monterrey (Cuota)

CLAVE: 00087

RUTA: MEX-040D

AÑO: 2013

LUGAR	ESTACION				CLASIFICACION VEHICULAR EN PORCIENTO														COORDENADAS		
	KM	TE	SC	TDPA	M	A	B	C2	C3	T3S2	T3S3	T3S2R4	OTROS	A	B	C	K'	D	LATITUD	LONGITUD	
Ojo Caliente	46.21	3	1	2399	6.6	37.2	5.8	15.0	4.2	17.0	4.9	8.3	1.0	43.8	5.8	50.4	0.074	0.503	25.617461	-100.906035	
Ojo Caliente	46.21	3	2	2427	5.9	32.5	6.4	15.8	4.5	19.6	5.4	8.9	1.0	38.4	6.4	55.2	0.069	0.503	25.617528	-100.906132	
Lim. Edos. Term. Coah. Ppia. N. L.	61.08																				
T. Izq. Anillo Periférico de Monterrey (Cuota)	82.00	1	1	5944	0.9	76.4	3.7	4.3	0.8	9.6	1.2	2.4	0.7	77.3	3.7	19.0	0.077	0.526	25.697397	-100.596665	
T. Izq. Anillo Periférico de Monterrey (Cuota)	82.00	1	2	5346	0.6	73.4	4.0	4.7	0.8	11.6	1.3	2.8	0.8	74.0	4.0	22.0	0.082	0.526	25.697473	-100.596654	
T. Izq. Anillo Periférico de Monterrey (Cuota)	82.00	3	1	2633	0.5	81.9	4.7	10.6	0.4	0.3	0.4	0.2	1.0	82.4	4.7	12.9	0.087	0.505	25.690765	-100.558560	

COAHUILA

23 CARR: Saltillo - Monterrey (Cuota)

CLAVE: 00087

RUTA: MEX-040D

AÑO: 2013

LUGAR	ESTACION				CLASIFICACION VEHICULAR EN PORCIENTO														COORDENADAS	
	KM	TE	SC	TDPA	M	A	B	C2	C3	T3S2	T3S3	T3S2R4	OTROS	A	B	C	K'	D	LATITUD	LONGITUD
T. Izq. Anillo Periférico de Monterrey (Cuota)	82.00	3	2	2683	0.3	80.3	5.4	11.7	0.4	0.3	0.5	0.2	0.9	80.6	5.4	14.0	0.086	0.505	25.690765	-100.558560
Morones Prieto	96.10																			

24 CARR: Torreón - Saltillo (Cuota)

CLAVE:

RUTA: MEX-040D

AÑO: 2013

LUGAR	ESTACION				CLASIFICACION VEHICULAR EN PORCIENTO														COORDENADAS	
	KM	TE	SC	TDPA	M	A	B	C2	C3	T3S2	T3S3	T3S2R4	OTROS	A	B	C	K'	D	LATITUD	LONGITUD
Matamoros	0.00																			
Caseta de Cobro La Cuchilla	37.00	2	1	2073	0.3	47.9	8.5	2.6	1.2	22.8	4.9	10.0	1.8	48.2	8.5	43.3	0.091	0.500	25.626987	-102.878211
Caseta de Cobro La Cuchilla	37.00	2	2	2073	0.3	47.9	8.5	2.6	1.2	22.8	4.9	10.0	1.8	48.2	8.5	43.3	0.091	0.500	25.626987	-102.878211
Caseta de Cobro Plan de Ayala	205.00	2	1	2139	0.3	51.2	9.6	2.3	1.1	19.5	4.3	9.8	1.9	51.5	9.6	38.9	0.091	0.500	25.444124	-101.303943
Caseta de Cobro Plan de Ayala	205.00	2	2	2139	0.3	51.2	9.6	2.3	1.1	19.5	4.3	9.8	1.9	51.5	9.6	38.9	0.091	0.500	25.444124	-101.303943
T. C. Saltillo - Torreón (Libre)	206.80																			

25 CARR: Allende - Villa Unión

CLAVE: 05001

RUTA: COA-015

AÑO: 2013

LUGAR	ESTACION				CLASIFICACION VEHICULAR EN PORCIENTO														COORDENADAS	
	KM	TE	SC	TDPA	M	A	B	C2	C3	T3S2	T3S3	T3S2R4	OTROS	A	B	C	K'	D	LATITUD	LONGITUD
Allende	0.00	3	0	2150	1.8	71.3	1.8	22.8	0.8	1.4	0.1	0.0	0.0	73.1	1.8	25.1	0.073	0.502	28.335630	-100.838293
Villa Unión	19.00																			

26 CARR: Cuatro Ciénegas - Ocampo

CLAVE: 05026

RUTA: COA-048

AÑO: 2013

LUGAR	ESTACION				CLASIFICACION VEHICULAR EN PORCIENTO														COORDENADAS	
	KM	TE	SC	TDPA	M	A	B	C2	C3	T3S2	T3S3	T3S2R4	OTROS	A	B	C	K'	D	LATITUD	LONGITUD
Cuatro Ciénegas	0.00	3	0	1336	1.8	88.8	2.6	4.2	1.0	1.6	0.0	0.0	0.0	90.6	2.6	6.8	0.073	0.515	27.002096	-102.073544
Ocampo	50.00																			

27 CARR: El Sauz - Palau

CLAVE: 05060

RUTA: COA-022

AÑO: 2013

LUGAR	ESTACION				CLASIFICACION VEHICULAR EN PORCIENTO														COORDENADAS	
	KM	TE	SC	TDPA	M	A	B	C2	C3	T3S2	T3S3	T3S2R4	OTROS	A	B	C	K'	D	LATITUD	LONGITUD
El Sauz	0.00	3	1	1524	1.2	71.9	1.9	14.2	1.8	3.2	3.7	1.9	0.2	73.1	1.9	25.0	0.073	0.501	27.640391	-101.189320
El Sauz	0.00	3	2	1531	0.9	68.2	2.3	16.6	2.0	3.4	4.3	2.1	0.2	69.1	2.3	28.6	0.075	0.501	27.640595	-101.189338
Minas de Barroterán	31.00	3	1	1300	1.7	63.1	4.7	18.3	2.7	4.0	2.9	1.6	1.0	64.8	4.7	30.5	0.072	0.504	27.662730	-101.288979

COAHUILA

27 CARR: El Sauz - Palau

CLAVE: 05060

RUTA: COA-022

AÑO: 2013

LUGAR	ESTACION				CLASIFICACION VEHICULAR EN PORCIENTO														COORDENADAS	
	KM	TE	SC	TDPA	M	A	B	C2	C3	T3S2	T3S3	T3S2R4	OTROS	A	B	C	K'	D	LATITUD	LONGITUD
Minas de Barroterán	31.00	3	2	1319	1.4	60.5	5.1	19.7	2.9	4.4	3.2	1.7	1.1	61.9	5.1	33.0	0.076	0.504	27.662354	-101.289070
Palau	42.50	1	1	2115	1.7	71.5	1.0	14.5	2.2	4.5	3.5	0.9	0.2	73.2	1.0	25.8	0.065	0.518	27.874835	-101.415443
Palau	42.50	1	2	2263	1.7	69.1	1.1	16.5	2.2	4.6	3.6	1.1	0.1	70.8	1.1	28.1	0.076	0.518	27.874792	-101.415618

28 CARR: Emiliano Zapata - Viesca

CLAVE: 05521

RUTA: COA-082

AÑO: 2013

LUGAR	ESTACION				CLASIFICACION VEHICULAR EN PORCIENTO														COORDENADAS	
	KM	TE	SC	TDPA	M	A	B	C2	C3	T3S2	T3S3	T3S2R4	OTROS	A	B	C	K'	D	LATITUD	LONGITUD
Emiliano Zapata	0.00	3	0	731	1.0	76.3	2.0	17.2	1.5	1.5	0.3	0.1	0.1	77.3	2.0	20.7	0.122	0.527	25.485447	-102.943251
Viesca	24.00																			

29 CARR: Ent. La Rosa - General Cepeda

CLAVE: 05034

RUTA: COA-034

AÑO: 2013

LUGAR	ESTACION				CLASIFICACION VEHICULAR EN PORCIENTO														COORDENADAS	
	KM	TE	SC	TDPA	M	A	B	C2	C3	T3S2	T3S3	T3S2R4	OTROS	A	B	C	K'	D	LATITUD	LONGITUD
T. C. Saltillo - Torreón	0.00	3	0	1103	0.5	74.3	7.1	15.3	1.0	1.6	0.2	0.0	0.0	74.8	7.1	18.1	0.080	0.502	25.506532	-101.379450
Gral. Cepeda	21.00	1	0	1172	1.0	69.4	9.0	18.4	0.8	1.3	0.0	0.0	0.1	70.4	9.0	20.6	0.081	0.508	25.390449	-101.478113

30 CARR: Ent. Paila - Parras de La Fuente

CLAVE: 05014

RUTA: COA-102

AÑO: 2013

LUGAR	ESTACION				CLASIFICACION VEHICULAR EN PORCIENTO														COORDENADAS	
	KM	TE	SC	TDPA	M	A	B	C2	C3	T3S2	T3S3	T3S2R4	OTROS	A	B	C	K'	D	LATITUD	LONGITUD
Ent. Paila	0.00	3	0	1881	0.5	73.0	5.0	14.2	1.7	3.3	0.9	0.7	0.7	73.5	5.0	21.5	0.082	0.505	25.644191	-102.148321
Parras de La Fuente	20.05	1	1	1687	5.1	79.6	3.5	8.6	0.7	1.3	0.6	0.2	0.4	84.7	3.5	11.8	0.101	0.519	25.469531	-102.173742
Parras de La Fuente	20.05	1	2	1818	6.1	77.8	3.6	9.5	0.6	1.3	0.5	0.2	0.4	83.9	3.6	12.5	0.091	0.519	25.469517	-102.173579

31 CARR: Libramiento de Matamoros

CLAVE: 05032

RUTA: COA

AÑO: 2013

LUGAR	ESTACION				CLASIFICACION VEHICULAR EN PORCIENTO														COORDENADAS	
	KM	TE	SC	TDPA	M	A	B	C2	C3	T3S2	T3S3	T3S2R4	OTROS	A	B	C	K'	D	LATITUD	LONGITUD
T. C. Saltillo - Torreón	0.00	3	0	7865	2.6	63.9	1.9	14.4	3.1	8.2	3.1	1.6	1.2	66.5	1.9	31.6	0.070	0.507	25.533281	-103.219881
X. C. Matamoros - La Unión	3.70	3	1	6083	4.4	69.3	2.5	7.0	2.2	7.8	2.8	3.0	1.0	73.7	2.5	23.8	0.084	0.524	25.538671	-103.225859
X. C. Matamoros - La Unión	3.70	3	2	6694	3.3	67.3	2.7	7.7	2.5	8.9	3.2	3.4	1.0	70.6	2.7	26.7	0.082	0.524	25.538671	-103.225858
T. C. Saltillo - Torreón	5.32	1	1	7393	2.0	69.7	4.0	6.6	2.4	9.0	2.6	2.8	0.9	71.7	4.0	24.3	0.071	0.510	25.536816	-103.244827
T. C. Saltillo - Torreón	5.32	1	2	7107	1.9	66.3	4.3	7.6	2.8	9.8	2.8	3.4	1.1	68.2	4.3	27.5	0.072	0.510	25.536818	-103.244819

COAHUILA

32 CARR: Libramiento de Saltillo J.L.P.

CLAVE: 05031

RUTA: COA

AÑO: 2013

LUGAR	ESTACION				CLASIFICACION VEHICULAR EN PORCIENTO													COORDENADAS			
	KM	TE	SC	TDPA	M	A	B	C2	C3	T3S2	T3S3	T3S2R4	OTROS	A	B	C	K'	D	LATITUD	LONGITUD	
T. C. Ent. Bella Unión - Saltillo	0.00																				
X. C. Saltillo - Arteaga	2.50	3	1	7572	1.5	72.0	4.8	4.8	5.5	7.0	2.4	1.1	0.9	73.5	4.8	21.7	0.110	0.500	25.449787	-100.892558	
X. C. Saltillo - Arteaga	2.50	3	2	7575	0.8	69.7	5.5	5.1	6.1	7.8	2.8	1.2	1.0	70.5	5.5	24.0	0.112	0.500	25.449683	-100.892705	
T. C. Saltillo - Monterrey	18.00	1	1	6315	0.5	66.3	3.9	9.1	5.1	11.8	1.6	1.0	0.7	66.8	3.9	29.3	0.111	0.522	25.554673	-100.921409	
T. C. Saltillo - Monterrey	18.00	1	2	5781	1.1	62.0	4.2	10.8	6.0	12.3	1.8	1.1	0.7	63.1	4.2	32.7	0.102	0.522	25.554733	-100.921815	

33 CARR: Libramiento de Torreón

CLAVE: 05516

RUTA: COA

AÑO: 2013

LUGAR	ESTACION				CLASIFICACION VEHICULAR EN PORCIENTO													COORDENADAS			
	KM	TE	SC	TDPA	M	A	B	C2	C3	T3S2	T3S3	T3S2R4	OTROS	A	B	C	K'	D	LATITUD	LONGITUD	
Lim. Edos. Term. Coah. Ppia. Dgo.	11.80																				
X. C. Saltillo - Torreón	13.90	1	1	22414	3.6	76.5	1.5	6.7	2.8	3.7	2.1	1.6	1.5	80.1	1.5	18.4	0.064	0.507	25.530772	-103.365803	
X. C. Saltillo - Torreón	13.90	1	2	23001	2.7	75.8	1.7	7.3	2.8	4.0	2.3	1.7	1.7	78.5	1.7	19.8	0.064	0.507	25.530722	-103.366063	
X. C. Saltillo - Torreón	14.40	3	1	25516	1.9	83.3	1.9	3.2	1.1	3.3	3.2	1.3	0.8	85.2	1.9	12.9	0.080	0.509	25.540572	-103.370591	
X. C. Saltillo - Torreón	14.40	3	2	26450	1.7	81.8	2.1	3.4	1.2	3.8	3.8	1.3	0.9	83.5	2.1	14.4	0.082	0.509	25.539763	-103.371029	
T. C. La Cuchilla - Torreón (Baja)	21.70	1	1	10562	2.5	85.0	1.9	2.8	0.8	2.5	3.0	0.7	0.8	87.5	1.9	10.6	0.099	0.502	25.582647	-103.402688	
T. C. La Cuchilla - Torreón (Alta)	21.70	1	1	6278	1.7	80.7	2.9	3.8	1.7	5.0	2.0	1.4	0.8	82.4	2.9	14.7	0.089	0.503	25.582526	-103.402790	
T. C. La Cuchilla - Torreón (Alta)	21.70	1	2	6355	1.3	79.0	3.0	4.0	1.9	5.9	2.4	1.7	0.8	80.3	3.0	16.7	0.077	0.503	25.582455	-103.402843	
T. C. La Cuchilla - Torreón (Baja)	21.70	1	2	10492	3.0	83.2	2.2	3.2	0.8	2.6	3.3	0.8	0.9	86.2	2.2	11.6	0.100	0.502	25.582231	-103.403001	
T. C. Durango - Torreón	28.60																				

34 CARR: Monclova - Estación Candela

CLAVE: 00501

RUTA: COA-030-NL

AÑO: 2013

LUGAR	ESTACION				CLASIFICACION VEHICULAR EN PORCIENTO													COORDENADAS			
	KM	TE	SC	TDPA	M	A	B	C2	C3	T3S2	T3S3	T3S2R4	OTROS	A	B	C	K'	D	LATITUD	LONGITUD	
T. C. Monclova - Piedras Negras	0.00																				
T. Izq. Libramiento de Monclova	5.10	1	1	1419	2.6	87.3	1.9	4.4	1.5	1.7	0.0	0.2	0.4	89.9	1.9	8.2	0.089	0.518	26.935932	-101.382811	
T. Izq. Libramiento de Monclova	5.10	1	2	1525	2.3	87.2	2.0	4.7	1.6	1.9	0.0	0.2	0.1	89.5	2.0	8.5	0.089	0.518	26.935231	-101.384016	
Lim. Edos. Term. Coah. Ppia. N. L.	118.00																				
T. C. Monterrey - Colombia	125.50	1	0	407	0.4	66.3	2.9	16.6	2.9	8.8	1.1	0.5	0.5	66.7	2.9	30.4	0.101	0.516	26.838040	-100.494446	

COAHUILA

35 CARR: Morelos - Ent. Las Corrientes

CLAVE: 05500

RUTA: COA-010

AÑO: 2013

LUGAR	ESTACION				CLASIFICACION VEHICULAR EN PORCIENTO										COORDENADAS					
	KM	TE	SC	TDPA	M	A	B	C2	C3	T3S2	T3S3	T3S2R4	OTROS	A	B	C	K'	D	LATITUD	LONGITUD
T. C. Morelos - Cd. Acuña	0.00	3	0	2077	3.7	79.2	2.4	12.9	0.2	1.2	0.4	0.0	0.0	82.9	2.4	14.7	0.097	0.514	28.401790	-100.895056
Los Álamos	9.20	1	0	852	1.6	73.5	2.8	21.2	0.2	0.6	0.1	0.0	0.0	75.1	2.8	22.1	0.102	0.501	28.355523	-100.942736
T. C. Monclova - Piedras Negras	20.00																			

36 CARR: Puerto de Flores - El Hondable

CLAVE: 05512

RUTA: COA-112

AÑO: 2013

LUGAR	ESTACION				CLASIFICACION VEHICULAR EN PORCIENTO										COORDENADAS					
	KM	TE	SC	TDPA	M	A	B	C2	C3	T3S2	T3S3	T3S2R4	OTROS	A	B	C	K'	D	LATITUD	LONGITUD
T. C. Aut. Puerto México - Ojo Caliente	0.00	3	0	1670	0.4	82.7	1.2	12.0	1.0	2.1	0.3	0.2	0.1	83.1	1.2	15.7	0.174	0.502	25.345900	-100.788669
San Antonio de Las Alazanas	24.00	1	0	1714	0.9	83.5	0.7	11.9	0.5	1.9	0.1	0.3	0.2	84.4	0.7	14.9	0.171	0.505	25.276499	-100.595081
El Hondable	50.50																			

37 CARR: Ramal a Hipólito

CLAVE: 05509

RUTA: COA-114

AÑO: 2013

LUGAR	ESTACION				CLASIFICACION VEHICULAR EN PORCIENTO										COORDENADAS					
	KM	TE	SC	TDPA	M	A	B	C2	C3	T3S2	T3S3	T3S2R4	OTROS	A	B	C	K'	D	LATITUD	LONGITUD
T. C. Saltillo - Torreón	0.00	3	0	715	1.6	66.0	2.3	16.3	0.8	5.5	5.6	1.9	0.0	67.6	2.3	30.1	0.112	0.501	25.594413	-101.452338
Hipólito	13.00																			

38 CARR: Ramal a Lamadrid

CLAVE: 05522

RUTA: COA-042

AÑO: 2013

LUGAR	ESTACION				CLASIFICACION VEHICULAR EN PORCIENTO										COORDENADAS					
	KM	TE	SC	TDPA	M	A	B	C2	C3	T3S2	T3S3	T3S2R4	OTROS	A	B	C	K'	D	LATITUD	LONGITUD
T. C. Monclova - San Pedro de Las Colonias	0.00	3	0	865	1.2	90.7	2.9	3.8	0.5	0.9	0.0	0.0	0.0	91.9	2.9	5.2	0.094	0.501	27.016630	-101.791935
Lamadrid	4.00																			

39 CARR: Sabinas - Don Martín

CLAVE: 05501

RUTA: COA-025

AÑO: 2013

LUGAR	ESTACION				CLASIFICACION VEHICULAR EN PORCIENTO										COORDENADAS					
	KM	TE	SC	TDPA	M	A	B	C2	C3	T3S2	T3S3	T3S2R4	OTROS	A	B	C	K'	D	LATITUD	LONGITUD
Sabinas	0.00	3	0	2010	5.9	72.6	1.4	16.1	1.7	1.5	0.3	0.4	0.1	78.5	1.4	20.1	0.081	0.501	27.849856	-101.097018
T. Izq. La Mezquitosa	3.00	3	0	1099	3.0	59.1	1.2	32.5	1.2	1.8	0.4	0.7	0.1	62.1	1.2	36.7	0.084	0.511	27.845237	-101.084643
Juárez	53.00	3	0	469	4.5	83.3	1.3	4.3	3.0	2.7	0.6	0.3	0.0	87.8	1.3	10.9	0.109	0.507	27.619063	-100.704390
Don Martín	66.00	1	0	406	3.6	82.9	1.6	5.0	3.7	2.3	0.9	0.0	0.0	86.5	1.6	11.9	0.111	0.529	27.534158	-100.623382

COAHUILA

40 CARR: Saltillo - Arteaga

CLAVE: 05008

RUTA: COA-106

AÑO: 2013

LUGAR	ESTACION				CLASIFICACION VEHICULAR EN PORCIENTO													COORDENADAS		
	KM	TE	SC	TDPA	M	A	B	C2	C3	T3S2	T3S3	T3S2R4	OTROS	A	B	C	K'	D	LATITUD	LONGITUD
Saltillo	0.00	3	1	6960	1.2	87.1	4.2	5.6	0.8	0.7	0.4	0.0	0.0	88.3	4.2	7.5	0.097	0.500	25.443694	-100.943719
Saltillo	0.00	3	2	6970	1.0	86.1	4.6	6.2	0.8	0.9	0.4	0.0	0.0	87.1	4.6	8.3	0.088	0.500	25.443788	-100.943800
X. C. Libramiento de Matehuala - Monterrey	9.00	1	1	4577	1.9	80.2	5.8	6.1	1.3	2.3	1.4	0.3	0.7	82.1	5.8	12.1	0.094	0.509	25.444500	-100.897822
X. C. Libramiento de Matehuala - Monterrey	9.00	1	2	4753	1.9	80.1	4.7	6.5	1.5	2.6	1.6	0.3	0.8	82.0	4.7	13.3	0.095	0.509	25.444570	-100.897901
X. C. Libramiento de Matehuala - Monterrey	9.00	3	1	2889	1.8	83.0	5.0	6.0	1.9	1.5	0.5	0.3	0.0	84.8	5.0	10.2	0.078	0.503	25.448990	-100.885808
X. C. Libramiento de Matehuala - Monterrey	9.00	3	2	2922	1.7	82.0	4.9	6.8	2.1	1.5	0.7	0.3	0.0	83.7	4.9	11.4	0.074	0.503	25.449062	-100.885924
Arteaga	12.00	1	1	2349	3.5	83.0	4.7	5.8	1.6	1.4	0.0	0.0	0.0	86.5	4.7	8.8	0.129	0.500	25.448674	-100.869622
Arteaga	12.00	1	2	2350	3.6	80.9	5.7	6.4	1.9	1.5	0.0	0.0	0.0	84.5	5.7	9.8	0.120	0.500	25.448763	-100.869700
T. C. Ent. Bella Unión - Saltillo	18.00																			

41 CARR: San Buenaventura - Estación Hermanas

CLAVE: 05004

RUTA: COA-034

AÑO: 2013

LUGAR	ESTACION				CLASIFICACION VEHICULAR EN PORCIENTO													COORDENADAS		
	KM	TE	SC	TDPA	M	A	B	C2	C3	T3S2	T3S3	T3S2R4	OTROS	A	B	C	K'	D	LATITUD	LONGITUD
San Buenaventura	0.00	3	0	1496	3.5	79.7	1.0	12.7	1.4	1.2	0.3	0.0	0.2	83.2	1.0	15.8	0.077	0.501	27.082431	-101.525565
T. Izq. Santa Gertrudis	2.48	1	0	1362	2.3	81.7	0.7	13.5	0.7	0.9	0.2	0.0	0.0	84.0	0.7	15.3	0.082	0.504	27.089945	-101.512750
Abasolo	15.71	1	0	834	1.1	83.9	0.7	12.3	1.0	0.9	0.1	0.0	0.0	85.0	0.7	14.3	0.084	0.510	27.173541	-101.432115
Los Rodríguez	31.00	3	0	325	0.7	76.5	1.3	17.6	2.8	1.1	0.0	0.0	0.0	77.2	1.3	21.5	0.086	0.510	27.199109	-101.352421
Estación Hermanas	50.00	1	0	1486	0.9	85.9	2.0	4.9	1.9	2.9	1.0	0.4	0.1	86.8	2.0	11.2	0.089	0.500	27.222759	-101.230164

42 CARR: T. C. (Ent. Morelos - Saltillo) - Parras de La Fuente

CLAVE: 05510

RUTA: COA-105

AÑO: 2013

LUGAR	ESTACION				CLASIFICACION VEHICULAR EN PORCIENTO													COORDENADAS		
	KM	TE	SC	TDPA	M	A	B	C2	C3	T3S2	T3S3	T3S2R4	OTROS	A	B	C	K'	D	LATITUD	LONGITUD
T. C. Morelos - Saltillo	0.00	3	1	5513	1.4	69.0	5.8	6.2	3.5	11.5	1.5	0.4	0.7	70.4	5.8	23.8	0.119	0.504	25.261166	-101.101719
T. C. Morelos - Saltillo	0.00	3	2	5423	0.7	66.8	6.6	6.9	3.8	12.3	1.7	0.4	0.8	67.5	6.6	25.9	0.121	0.504	25.261015	-101.101579
Gral. Cepeda	40.00	1	0	904	1.2	72.1	7.6	17.9	0.2	1.0	0.0	0.0	0.0	73.3	7.6	19.1	0.115	0.505	25.362714	-101.479279
Gral. Cepeda	40.00	3	0	660	1.8	71.4	5.1	20.2	0.3	1.1	0.0	0.0	0.1	73.2	5.1	21.7	0.117	0.502	25.378603	-101.484983
Parras de La Fuente	102.00	1	0	1867	8.8	78.4	2.0	6.9	0.5	2.6	0.5	0.0	0.3	87.2	2.0	10.8	0.076	0.518	25.443639	-102.157318

43 CARR: T. C. (Saltillo - Monclova) - Ramos Arizpe

CLAVE: 05508

RUTA: COA

AÑO: 2013

LUGAR	ESTACION				CLASIFICACION VEHICULAR EN PORCIENTO													COORDENADAS		
	KM	TE	SC	TDPA	M	A	B	C2	C3	T3S2	T3S3	T3S2R4	OTROS	A	B	C	K'	D	LATITUD	LONGITUD
T. C. Saltillo - Monclova	0.00	3	0	3204	1.8	55.2	3.0	10.8	4.1	17.9	3.9	2.5	0.8	57.0	3.0	40.0	0.088	0.508	25.529087	-101.003010

COAHUILA

43 CARR: T. C. (Saltillo - Monclova) - Ramos Arizpe

CLAVE: 05508

RUTA: COA

AÑO: 2013

LUGAR	ESTACION				CLASIFICACION VEHICULAR EN PORCIENTO														COORDENADAS		
	KM	TE	SC	TDPA	M	A	B	C2	C3	T3S2	T3S3	T3S2R4	OTROS	A	B	C	K'	D	LATITUD	LONGITUD	
Ramos Arizpe	12.00																				

44 CARR: Torreón - Escuadrón 201

CLAVE: 05022

RUTA: COA-011

AÑO: 2013

LUGAR	ESTACION				CLASIFICACION VEHICULAR EN PORCIENTO														COORDENADAS	
	KM	TE	SC	TDPA	M	A	B	C2	C3	T3S2	T3S3	T3S2R4	OTROS	A	B	C	K'	D	LATITUD	LONGITUD
Torreón	0.00	3	1	9517	4.2	82.4	2.9	5.3	1.4	1.8	1.4	0.4	0.2	86.6	2.9	10.5	0.111	0.502	25.578376	-103.390596
Torreón	0.00	3	2	9582	3.4	81.7	3.3	5.9	1.5	2.1	1.5	0.4	0.2	85.1	3.3	11.6	0.113	0.502	25.578487	-103.390854
El Aguila	11.35	1	0	3813	8.0	78.5	2.3	6.1	1.1	2.9	0.4	0.2	0.5	86.5	2.3	11.2	0.071	0.509	25.623859	-103.371388
Escuadrón 201	17.06	1	0	1272	5.8	79.1	4.5	7.0	1.3	1.4	0.5	0.3	0.1	84.9	4.5	10.6	0.071	0.506	25.668538	-103.347874

45 CARR: Nueva Rosita - Ent. Allende (Cuota)

CLAVE: 05500

RUTA: COA-D

AÑO: 2013

LUGAR	ESTACION				CLASIFICACION VEHICULAR EN PORCIENTO														COORDENADAS		
	KM	TE	SC	TDPA	M	A	B	C2	C3	T3S2	T3S3	T3S2R4	OTROS	A	B	C	K'	D	LATITUD	LONGITUD	
T. C. Monclova - Piedras Negras	0.00	3	1	1101	0.3	66.5	4.5	15.5	1.8	6.5	1.2	3.1	0.6	66.8	4.5	28.7	0.114	0.509	27.940707	-101.191425	
T. C. Monclova - Piedras Negras	0.00	3	2	1062	1.1	62.0	4.9	17.9	1.9	6.8	1.3	3.5	0.6	63.1	4.9	32.0	0.120	0.509	27.940922	-101.191477	
Allende	52.20																				

46 CARR: Corredor Libramiento de San Pedro

CLAVE: 05023

RUTA: MEX-S-030-D

AÑO: 2013

LUGAR	ESTACION				CLASIFICACION VEHICULAR EN PORCIENTO														COORDENADAS	
	KM	TE	SC	TDPA	M	A	B	C2	C3	T3S2	T3S3	T3S2R4	OTROS	A	B	C	K'	D	LATITUD	LONGITUD
T. C. Monclova - San Pedro de las Colonias	0.00	3	0	2290	10.4	62.1	3.1	7.1	2.8	8.4	2.3	3.0	0.8	72.5	3.1	24.4	0.089	0.516	25.774746	-102.981960
T. C. La Cuchilla - Torreón	5.19	1	0	3238	9.5	67.6	3.1	6.4	1.9	7.1	1.7	2.0	0.7	77.1	3.1	19.8	0.084	0.502	25.759310	-103.000060

47 CARR: Matamoros - El Fresno

CLAVE: 05023

RUTA: MEX-S-030-D

AÑO: 2013

LUGAR	ESTACION				CLASIFICACION VEHICULAR EN PORCIENTO														COORDENADAS	
	KM	TE	SC	TDPA	M	A	B	C2	C3	T3S2	T3S3	T3S2R4	OTROS	A	B	C	K'	D	LATITUD	LONGITUD
Matamoros	0.00	3	0	2587	10.2	53.4	6.8	17.1	3.0	3.9	2.7	1.5	1.4	63.6	6.8	29.6	0.080	0.502	25.501277	-103.224417
El Fresno	12.60	1	0	1305	11.5	54.0	6.4	16.3	3.0	3.5	2.7	1.4	1.2	65.5	6.4	28.1	0.090	0.513	25.425818	-103.226993

COAHUILA

48 CARR: Matamoros - La Unión

CLAVE: 05023

RUTA: MEX-S-030-D

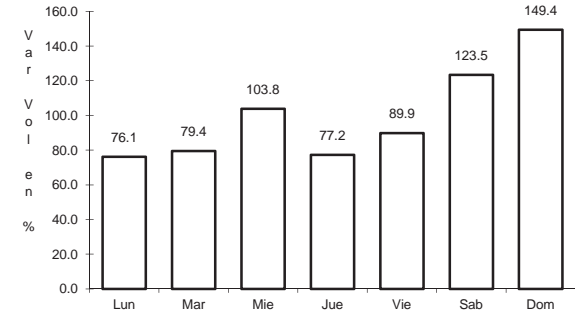
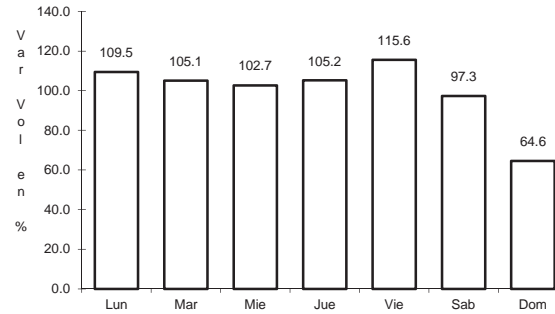
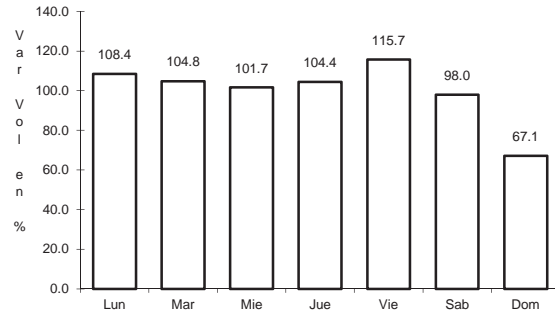
AÑO: 2013

LUGAR	ESTACION				CLASIFICACION VEHICULAR EN PORCIENTO													COORDENADAS		
	KM	TE	SC	TDPA	M	A	B	C2	C3	T3S2	T3S3	T3S2R4	OTROS	A	B	C	K'	D	LATITUD	LONGITUD
X. C. Libramiento de Matamoros	1.00	3	1	1172	3.7	63.0	5.5	17.9	4.6	2.1	1.2	0.6	1.4	66.7	5.5	27.8	0.091	0.508	25.543860	-103.222444
X. C. Libramiento de Matamoros	1.00	3	2	1137	3.6	59.5	5.8	19.7	5.4	2.5	1.2	0.8	1.5	63.1	5.8	31.1	0.096	0.508	25.543860	-103.222444
La Partida	14.09	1	0	1789	8.3	63.3	6.9	11.9	5.0	2.3	0.9	0.5	0.9	71.6	6.9	21.5	0.084	0.504	25.584689	-103.288310
La Partida	14.09	3	0	3269	8.2	60.9	6.5	12.9	2.9	4.4	1.8	1.0	1.4	69.1	6.5	24.4	0.088	0.506	25.594178	-103.313586
X. C. Antigua Carretera a San Pedro	22.00	1	1	7803	5.8	77.2	2.0	6.9	1.8	2.3	2.0	0.9	1.1	83.0	2.0	15.0	0.075	0.512	25.597944	-103.379656
X. C. Antigua Carretera a San Pedro	22.00	1	2	7444	5.4	76.1	2.2	7.7	1.8	2.4	2.1	1.0	1.3	81.5	2.2	16.3	0.085	0.512	25.597944	-103.379656
La Unión	25.00	1	1	6195	6.2	78.1	2.4	6.6	1.4	2.1	1.5	0.6	1.1	84.3	2.4	13.3	0.081	0.505	25.597282	-103.397616
La Unión	25.00	1	2	6081	6.2	76.3	2.6	7.2	1.5	2.3	1.8	0.8	1.3	82.5	2.6	14.9	0.083	0.505	25.597298	-103.397595

1 CARR: Cd. Acuña - Presa de La Amistad

CLAVE: 05085

RUTA: MEX-002



Km: 0.00 Tipo: 3 Sent: 1

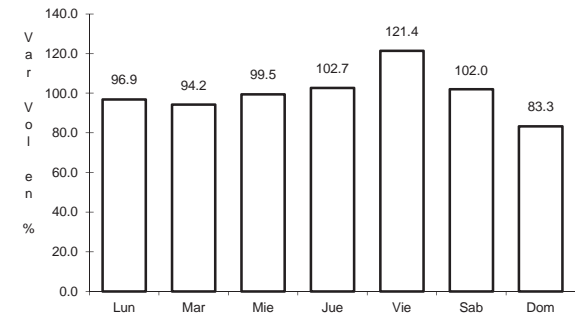
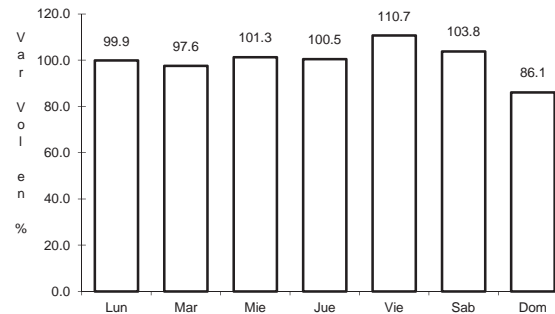
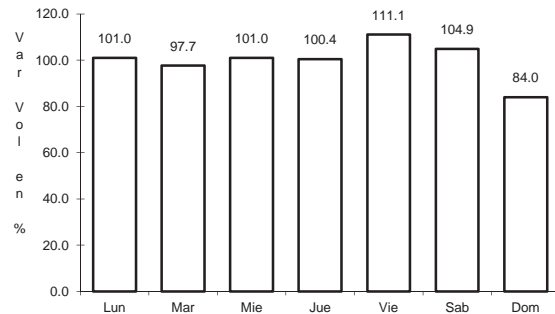
Km: 0.00 Tipo: 3 Sent: 2

Km: 23.00 Tipo: 1 Sent: 0

2 CARR: Durango - Torreón

CLAVE: 10085

RUTA: MEX-040



Km: 0.00 Tipo: 3 Sent: 1

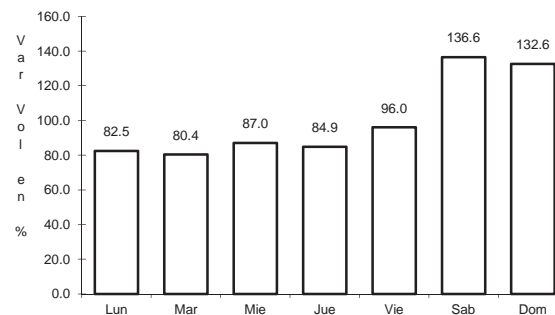
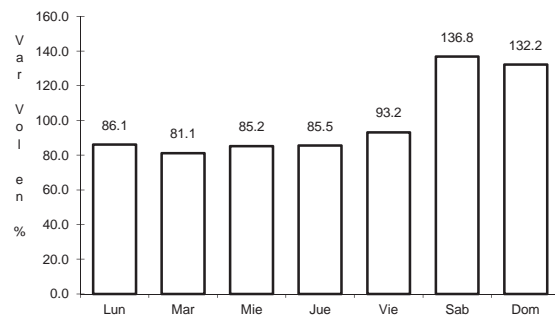
Km: 0.00 Tipo: 3 Sent: 2

Km: 120.90 Tipo: 1 Sent: 0

3 CARR: Ent. Bella Unión - Saltillo

CLAVE: 05003

RUTA: MEX-057



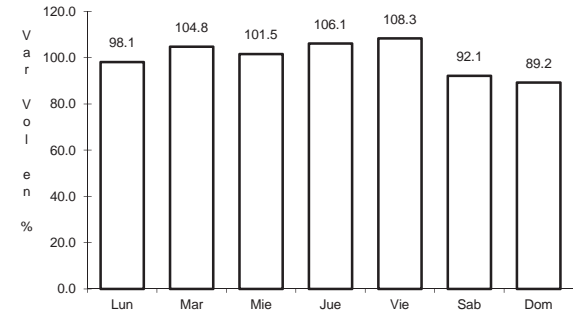
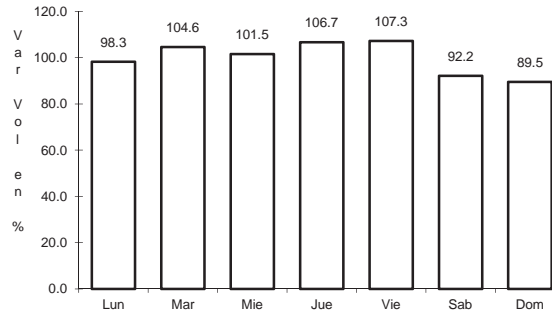
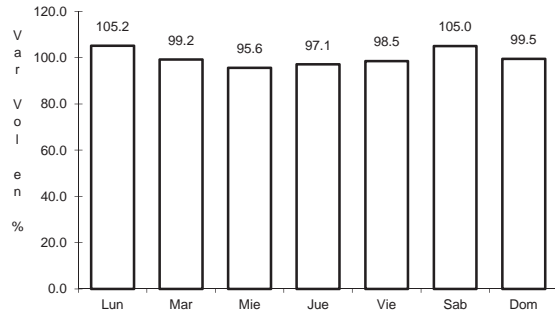
Km: 4.61 Tipo: 1 Sent: 1

Km: 4.61 Tipo: 1 Sent: 2

4 CARR: Ent. La Cuchilla - Torreón

CLAVE: 05021

RUTA: MEX-040



Km: 0.00 Tipo: 3 Sent: 0

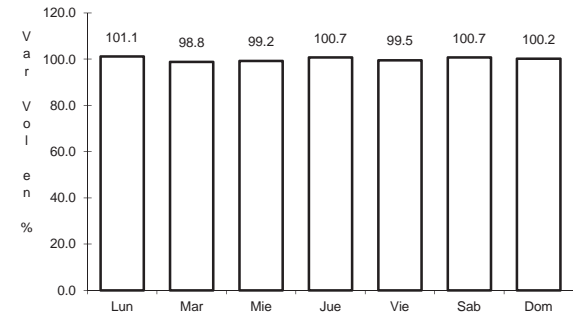
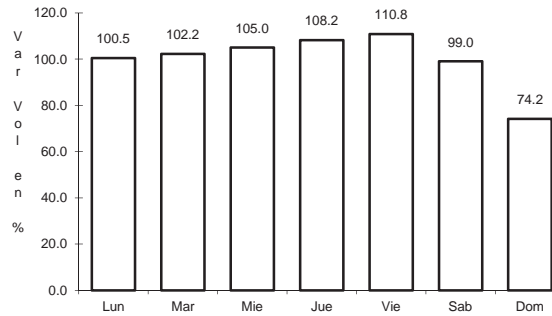
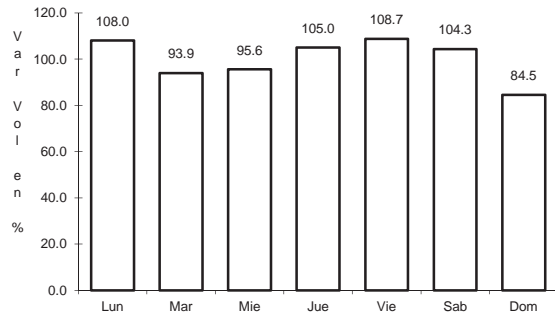
Km: 84.00 Tipo: 1 Sent: 1

Km: 84.00 Tipo: 1 Sent: 2

5 CARR: Ent. Morelos - Saltillo

CLAVE: 00149

RUTA: MEX-054



Km: 0.00 Tipo: 3 Sent: 1

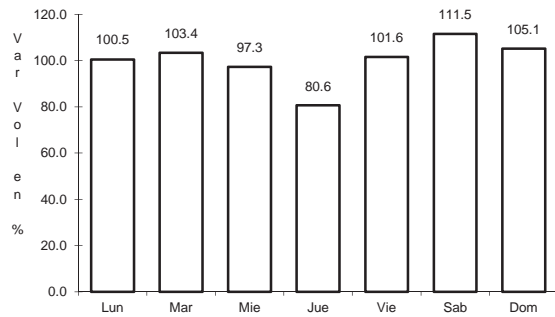
Km: 0.00 Tipo: 3 Sent: 2

Km: 333.00 Tipo: 3 Sent: 0

6 CARR: Gregorio García - Francisco I. Madero

CLAVE: 00110

RUTA: MEX-040

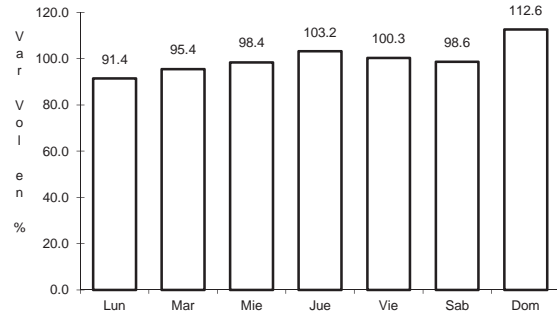


Km: 9.60 Tipo: 1 Sent: 0

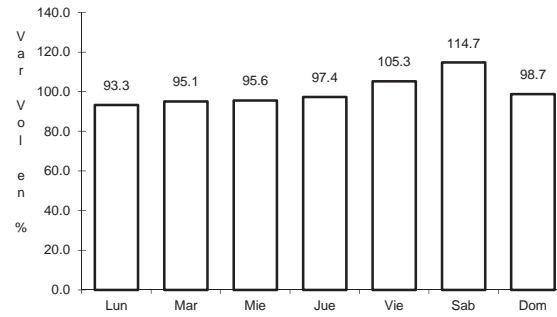
7 CARR: Huachichil - La Encantada

CLAVE: 05002

RUTA: MEX-057



Km: 0.00 Tipo: 3 Sent: 0

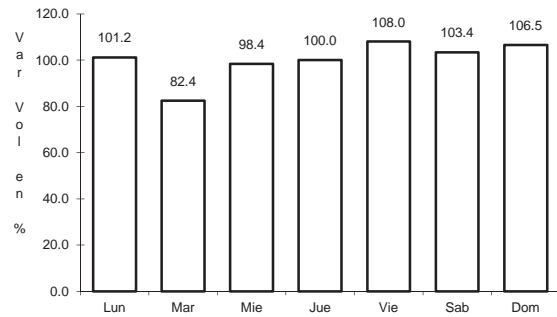


Km: 41.00 Tipo: 1 Sent: 0

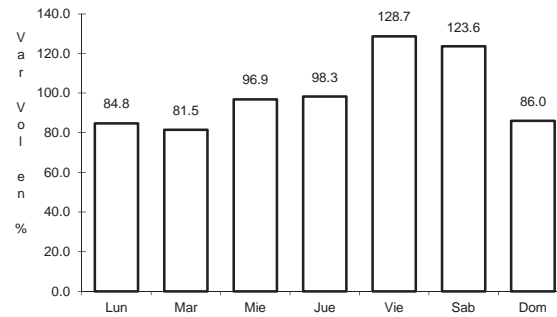
8 CARR: Libramiento Allende - Nava

CLAVE: 05518

RUTA: MEX-057



Km: 0.00 Tipo: 3 Sent: 1

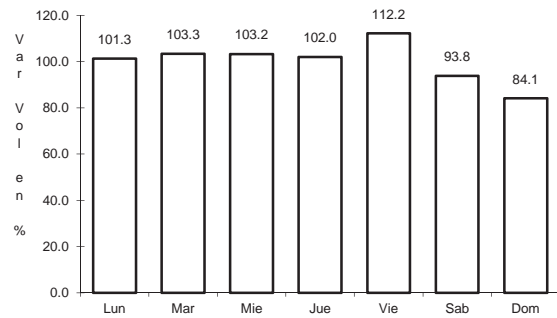


Km: 0.00 Tipo: 3 Sent: 2

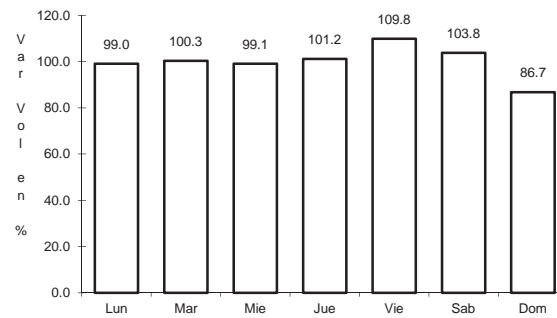
9 CARR: Monclova - Piedras Negras

CLAVE: 05407

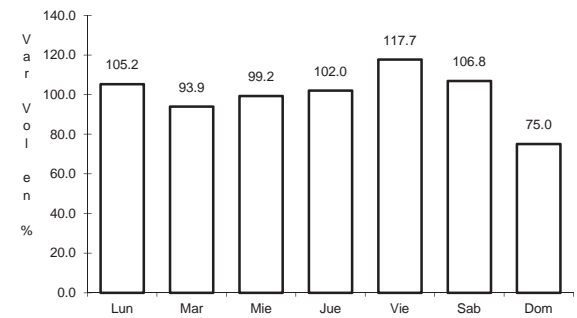
RUTA: MEX-057



Km: 0.00 Tipo: 3 Sent: 1



Km: 0.00 Tipo: 3 Sent: 2

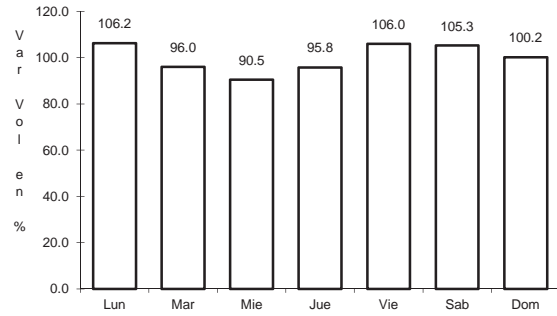


Km: 126.30 Tipo: 3 Sent: 0

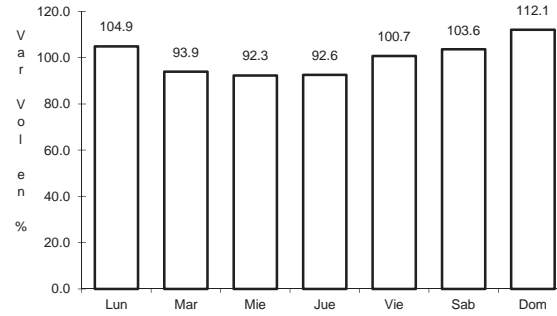
10 CARR: Monclova - San Pedro de Las Colonias

CLAVE: 05062

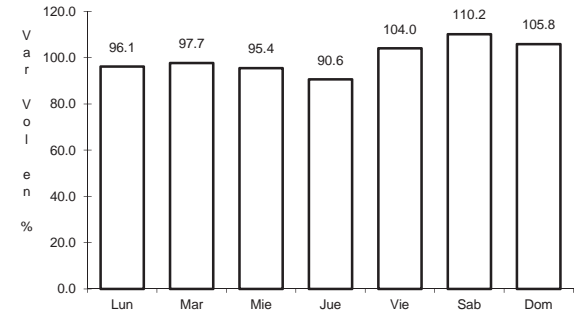
RUTA: MEX-030



Km: 2.00 Tipo: 3 Sent: 1



Km: 2.00 Tipo: 3 Sent: 2

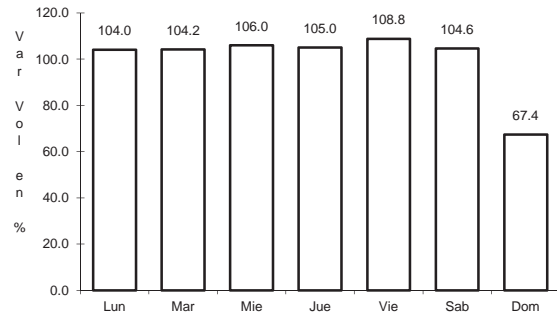


Km: 80.15 Tipo: 3 Sent: 0

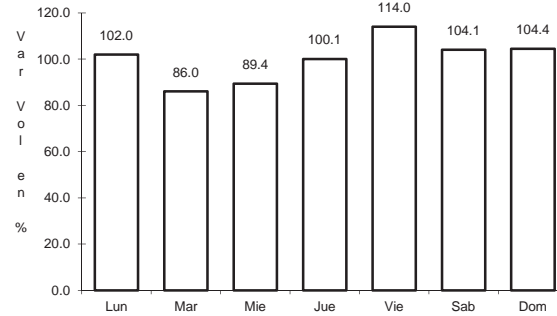
11 CARR: Monterrey - Castaños

CLAVE: 00128

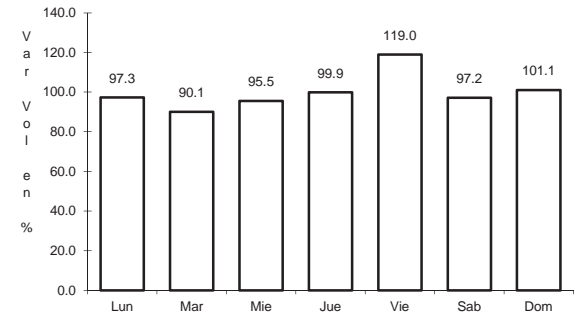
RUTA: MEX-053



Km: 0.00 Tipo: 3 Sent: 0



Km: 155.90 Tipo: 1 Sent: 1

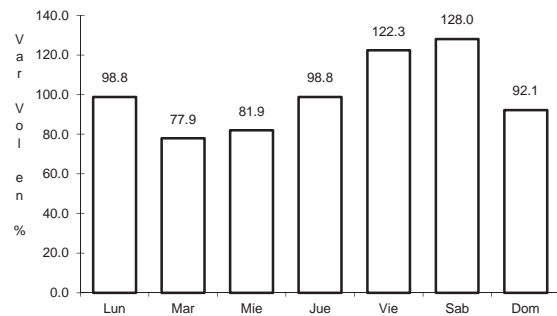


Km: 155.90 Tipo: 1 Sent: 2

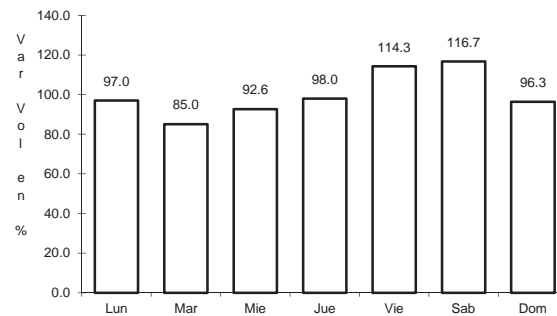
12 CARR: Morelos - Cd. Acuña

CLAVE: 05029

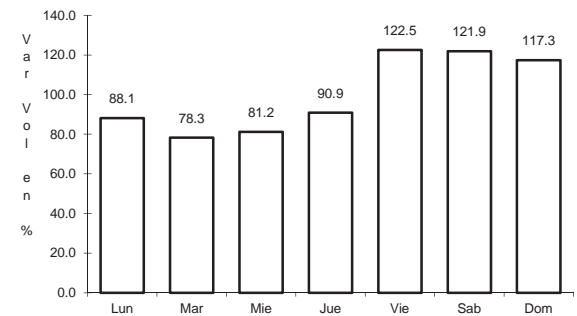
RUTA: MEX-029



Km: 0.00 Tipo: 3 Sent: 1



Km: 0.00 Tipo: 3 Sent: 2

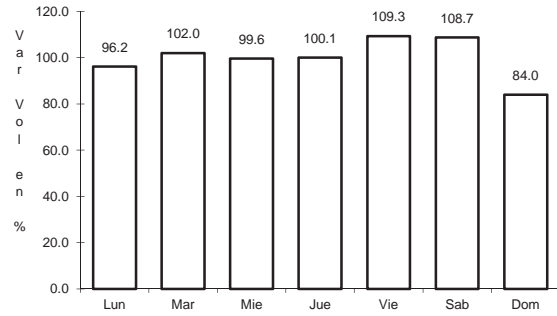


Km: 69.00 Tipo: 1 Sent: 0

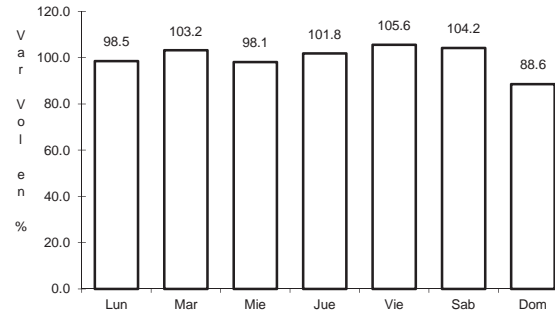
13 CARR: Nueva Rosita - Boquillas del Carmen

CLAVE: 05028

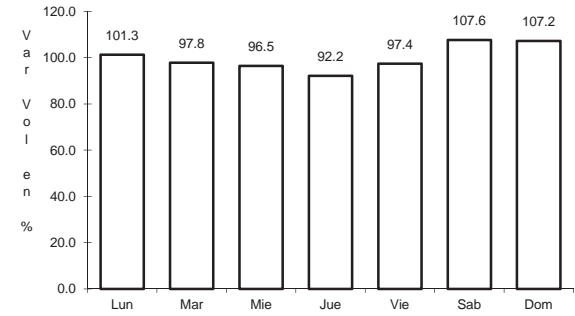
RUTA: MEX-053



Km: 0.00 Tipo: 3 Sent: 1



Km: 0.00 Tipo: 3 Sent: 2

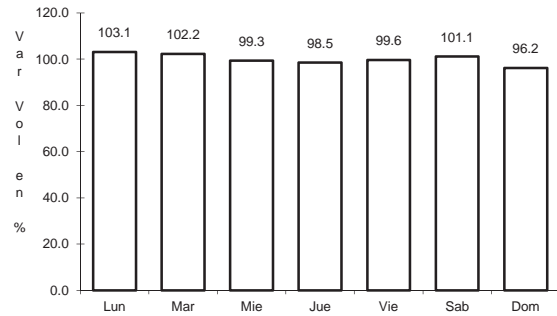


Km: 35.00 Tipo: 3 Sent: 0

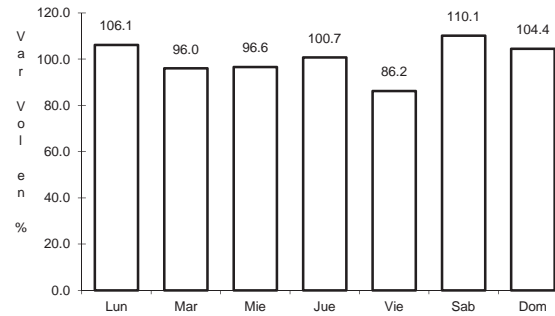
14 CARR: Ojo Caliente - Santa Cruz

CLAVE: 05007

RUTA: MEX-057



Km: 0.00 Tipo: 3 Sent: 0

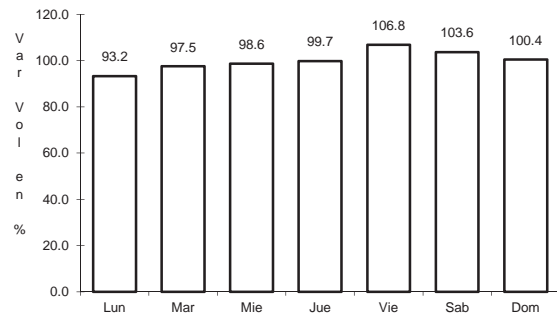


Km: 34.00 Tipo: 1 Sent: 0

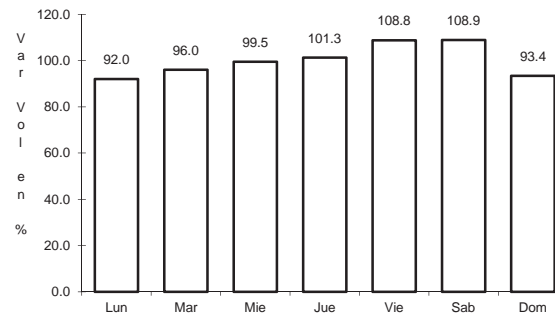
15 CARR: Piedras Negras - Cd. Acuña

CLAVE: 05061

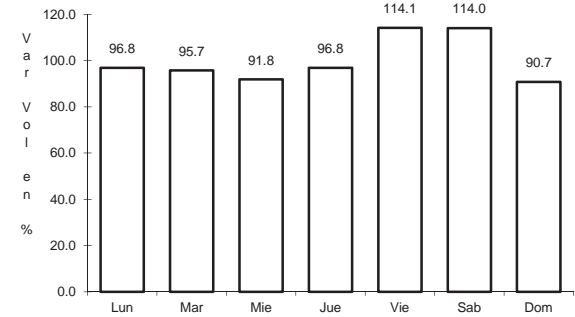
RUTA: MEX-002



Km: 0.00 Tipo: 3 Sent: 1



Km: 0.00 Tipo: 3 Sent: 2

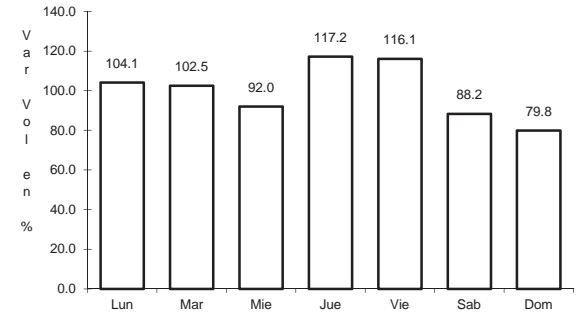
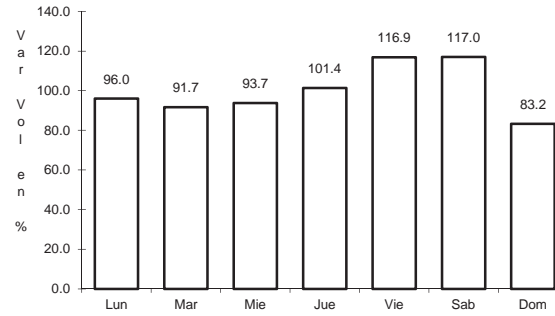
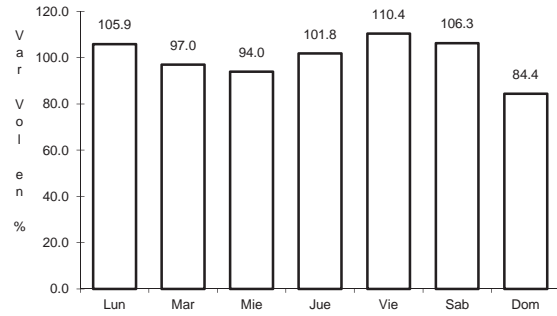


Km: 83.30 Tipo: 1 Sent: 0

16 CARR: Piedras Negras - Nuevo Laredo

CLAVE: 00503

RUTA: MEX-002



Km: 0.00 Tipo: 3 Sent: 1

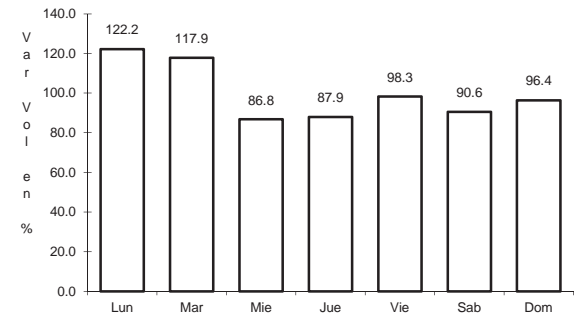
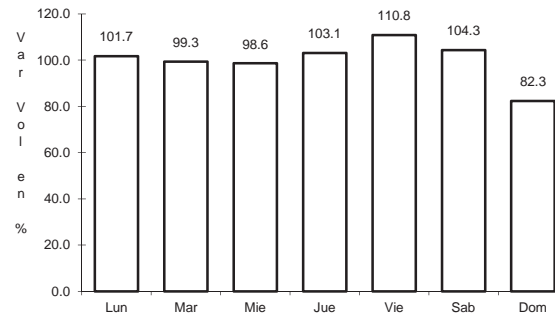
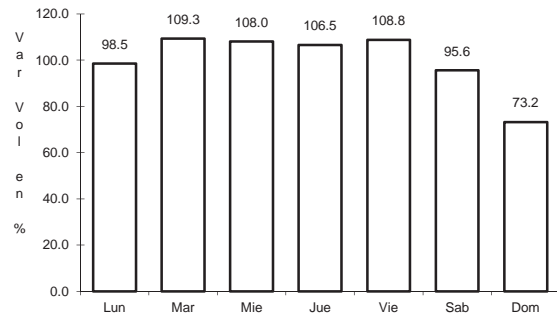
Km: 0.00 Tipo: 3 Sent: 2

Km: 134.00 Tipo: 3 Sent: 0

17 CARR: Saltillo - Monclova

CLAVE: 05406

RUTA: MEX-057



Km: 13.00 Tipo: 1 Sent: 0

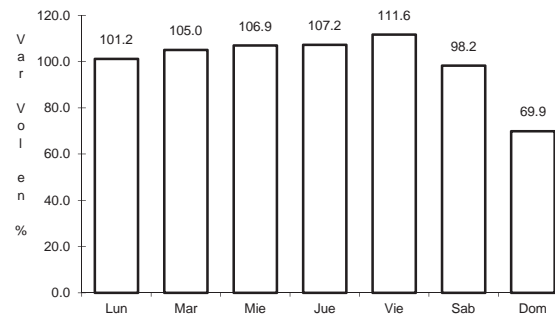
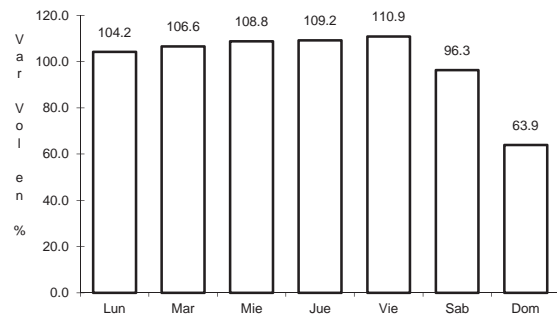
Km: 192.00 Tipo: 1 Sent: 1

Km: 192.00 Tipo: 1 Sent: 2

18 CARR: Saltillo - Monterrey

CLAVE: 00087

RUTA: MEX-040



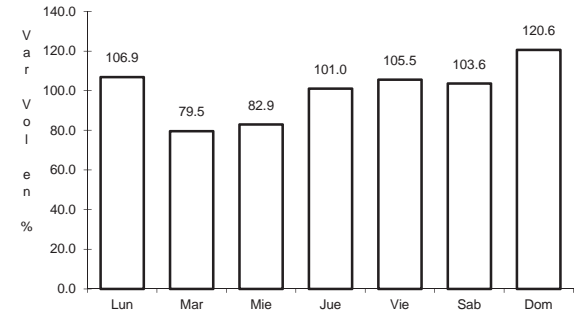
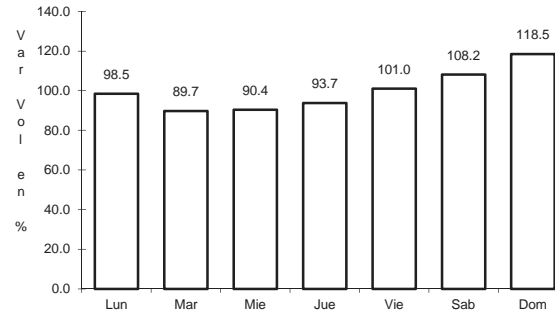
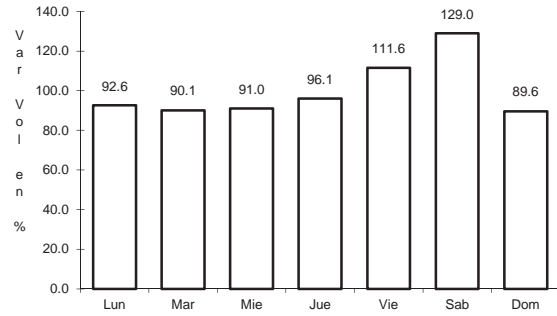
Km: 4.25 Tipo: 3 Sent: 1

Km: 4.25 Tipo: 3 Sent: 2

19 CARR: Saltillo - Torreón

CLAVE: 05086

RUTA: MEX-040



Km: 6.10 Tipo: 3 Sent: 1

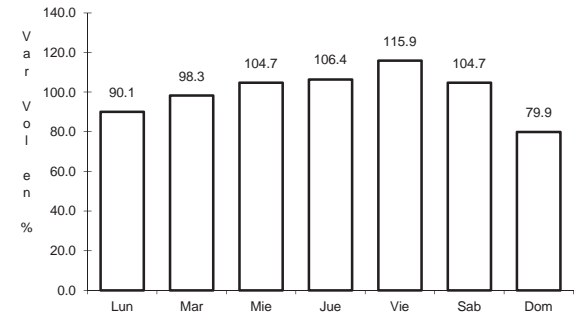
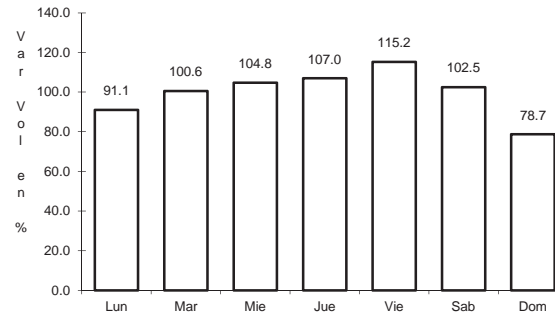
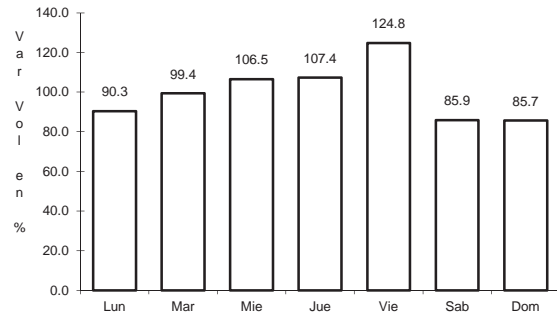
Km: 6.10 Tipo: 3 Sent: 2

Km: 91.20 Tipo: 1 Sent: 0

20 CARR: Libramiento Norponiente de Saltillo (Cuota)

CLAVE: 05022

RUTA: MEX-S30



Km: 0.00 Tipo: 3 Sent: 0

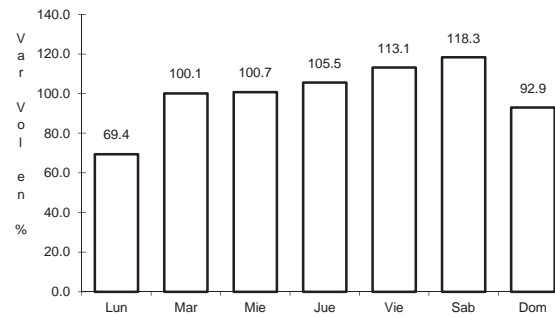
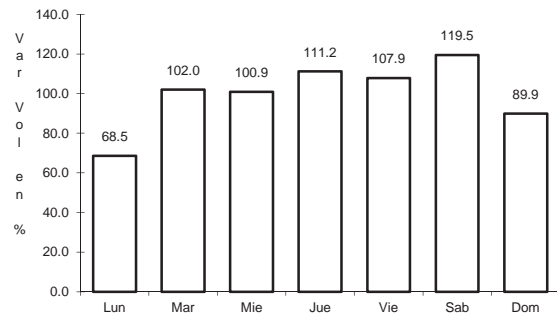
Km: 22.44 Tipo: 3 Sent: 0

Km: 46.21 Tipo: 1 Sent: 0

21 CARR: Libramiento Oriente de Saltillo (Cuota)

CLAVE: 00115

RUTA: MEX-057D



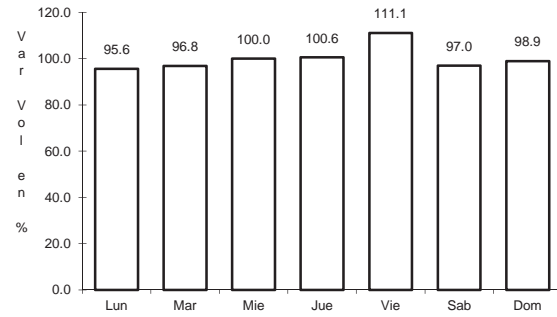
Km: 12.30 Tipo: 3 Sent: 1

Km: 12.30 Tipo: 3 Sent: 2

22 CARR: Puerto México - La Carbonera (Cuota)

CLAVE: 00115

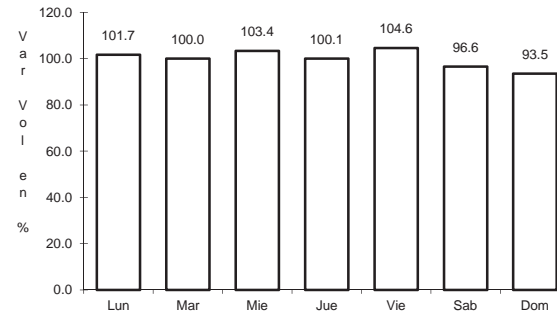
RUTA: MEX-057D



Km: 224.94

Tipo: 1

Sent: 1



Km: 224.94

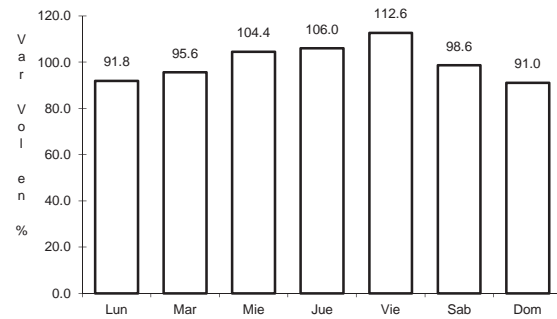
Tipo: 1

Sent: 2

23 CARR: Saltillo - Monterrey (Cuota)

CLAVE: 00087

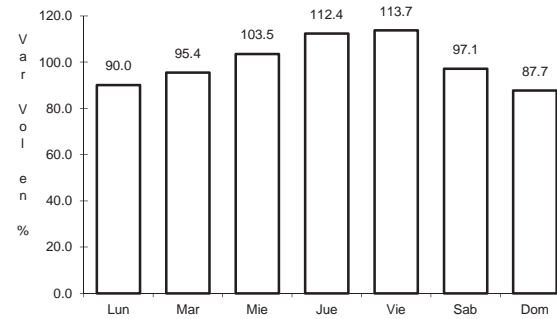
RUTA: MEX-040D



Km: 46.21

Tipo: 3

Sent: 1



Km: 46.21

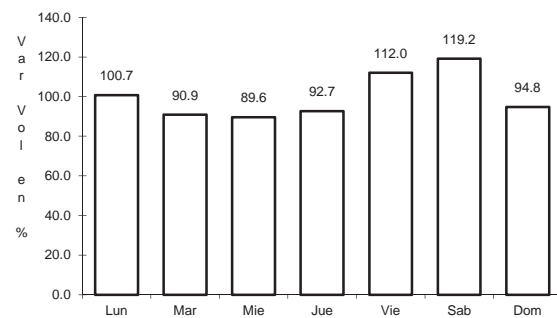
Tipo: 3

Sent: 2

25 CARR: Allende - Villa Unión

CLAVE: 05001

RUTA: COA-015



Km: 0.00

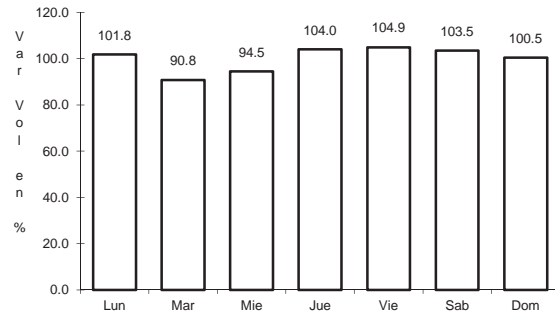
Tipo: 3

Sent: 0

26 CARR: Cuatro Ciénegas - Ocampo

CLAVE: 05026

RUTA: COA-048



Km: 0.00

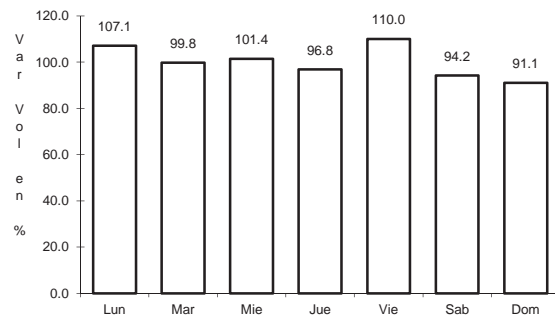
Tipo: 3

Sent: 0

27 CARR: El Sauz - Palau

CLAVE: 05060

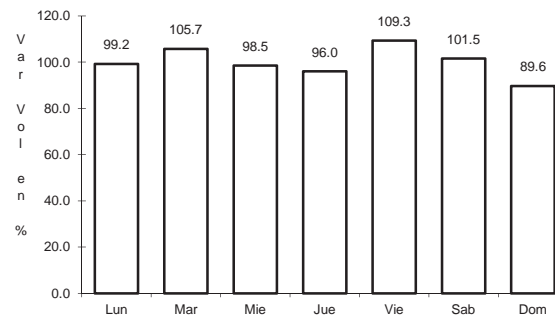
RUTA: COA-022



Km: 0.00

Tipo: 3

Sent: 1



Km: 0.00

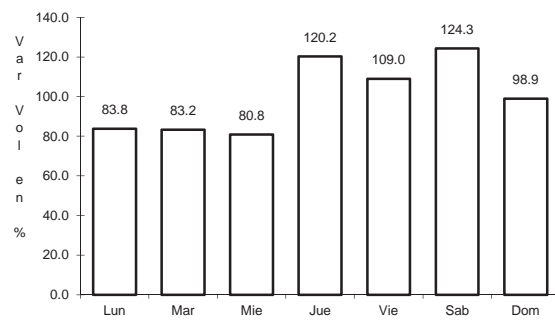
Tipo: 3

Sent: 2

28 CARR: Emiliano Zapata - Viesca

CLAVE: 05521

RUTA: COA-082



Km: 0.00

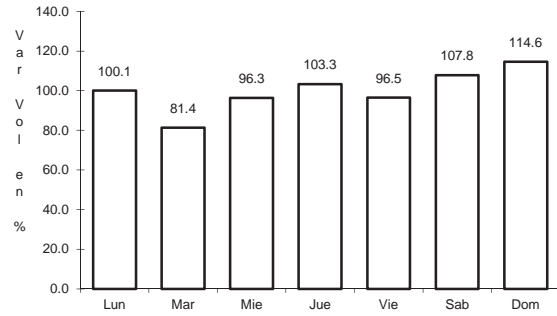
Tipo: 3

Sent: 0

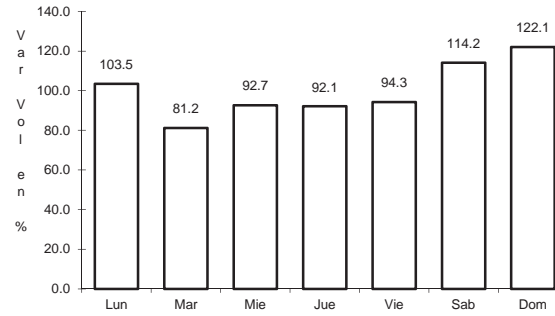
29 CARR: Ent. La Rosa - General Cepeda

CLAVE: 05034

RUTA: COA-034



Km: 0.00 Tipo: 3 Sent: 0

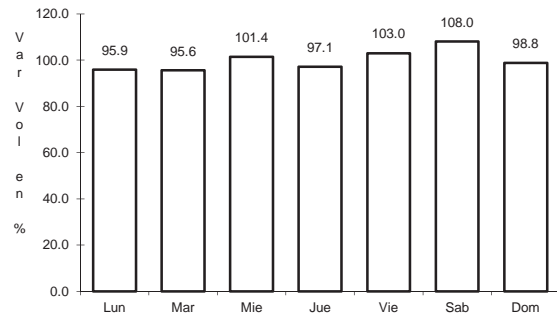


Km: 21.00 Tipo: 1 Sent: 0

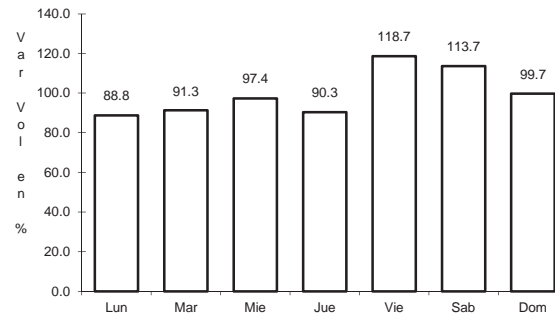
30 CARR: Ent. Paila - Parras de La Fuente

CLAVE: 05014

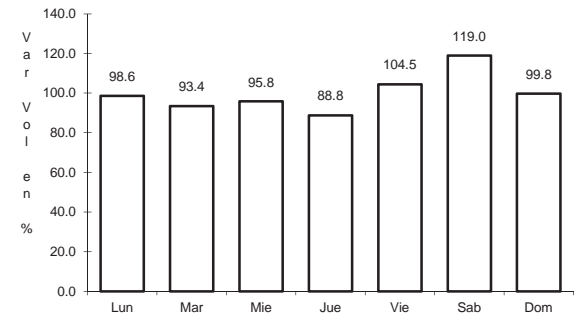
RUTA: COA-102



Km: 0.00 Tipo: 3 Sent: 0



Km: 20.05 Tipo: 1 Sent: 1

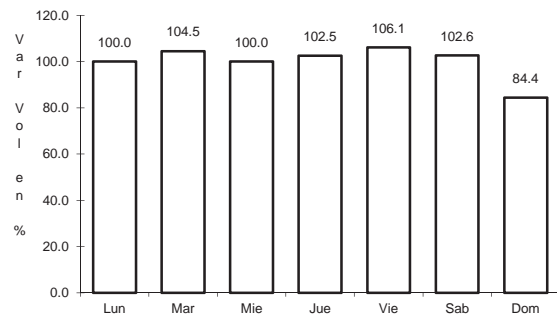


Km: 20.05 Tipo: 1 Sent: 2

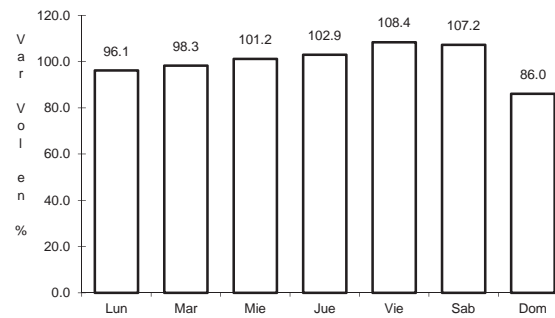
31 CARR: Libramiento de Matamoros

CLAVE: 05032

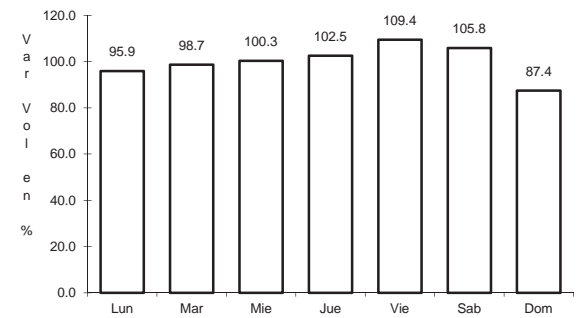
RUTA: COA



Km: 0.00 Tipo: 3 Sent: 0



Km: 5.32 Tipo: 1 Sent: 1

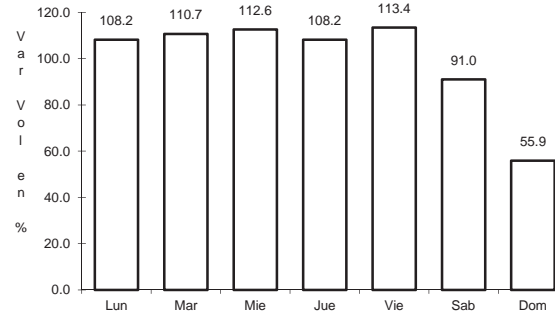
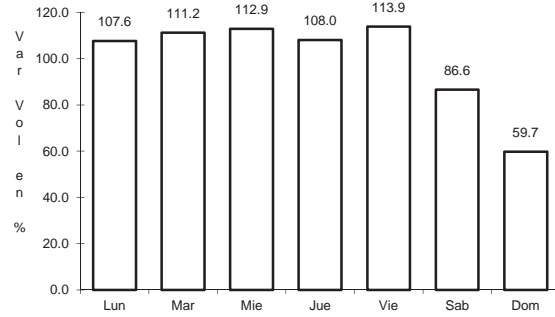


Km: 5.32 Tipo: 1 Sent: 2

32 CARR: Libramiento de Saltillo J.L.P.

CLAVE: 05031

RUTA: COA



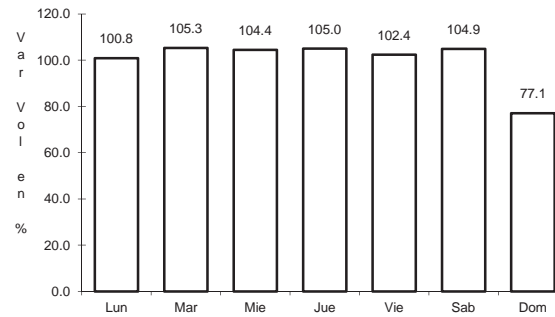
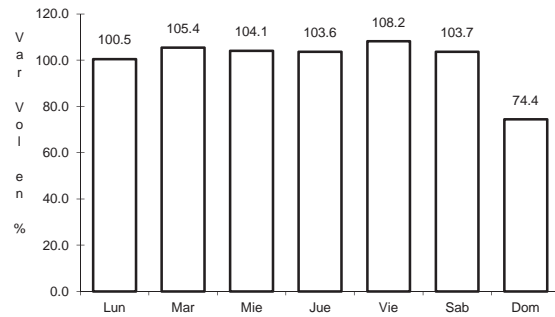
Km: 2.50 Tipo: 3 Sent: 1

Km: 2.50 Tipo: 3 Sent: 2

33 CARR: Libramiento de Torreón

CLAVE: 05516

RUTA: COA



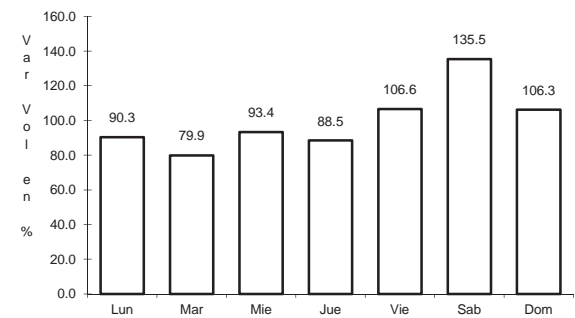
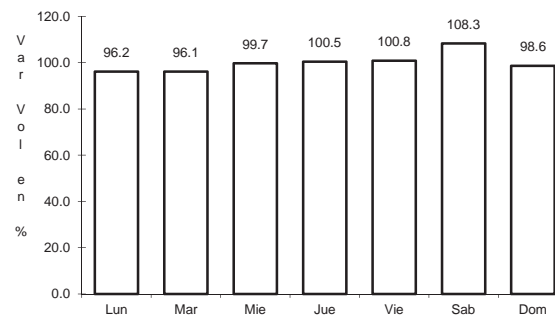
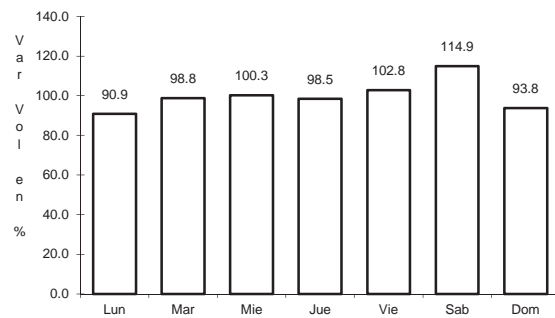
Km: 14.40 Tipo: 3 Sent: 1

Km: 14.40 Tipo: 3 Sent: 2

34 CARR: Monclova - Estación Candela

CLAVE: 00501

RUTA: COA-030-NL



Km: 5.10 Tipo: 1 Sent: 1

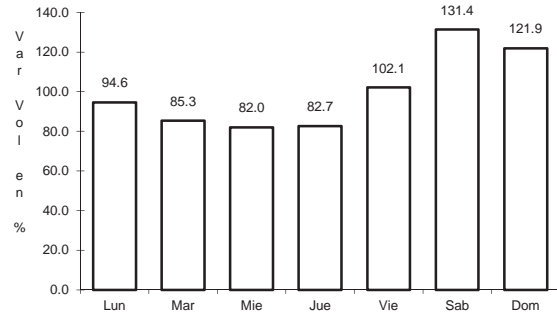
Km: 5.10 Tipo: 1 Sent: 2

Km: 125.50 Tipo: 1 Sent: 0

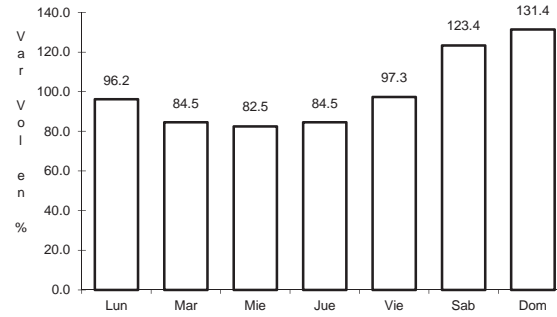
35 CARR: Morelos - Ent. Las Corrientes

CLAVE: 05500

RUTA: COA-010



Km: 0.00 Tipo: 3 Sent: 0

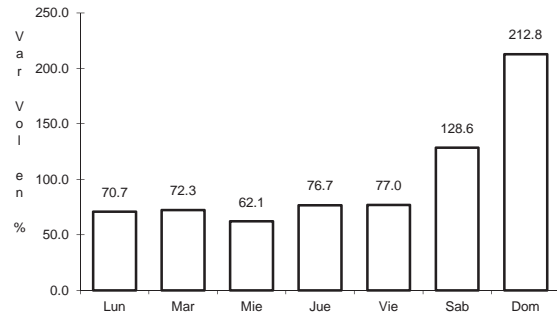


Km: 9.20 Tipo: 1 Sent: 0

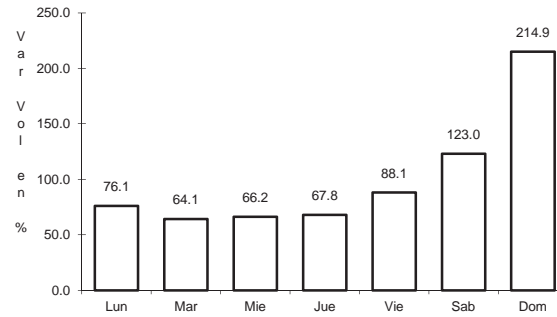
36 CARR: Puerto de Flores - El Hondable

CLAVE: 05512

RUTA: COA-112



Km: 0.00 Tipo: 3 Sent: 0

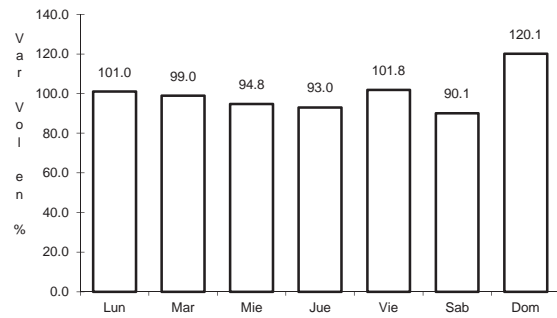


Km: 24.00 Tipo: 1 Sent: 0

37 CARR: Ramal a Hipólito

CLAVE: 05509

RUTA: COA-114

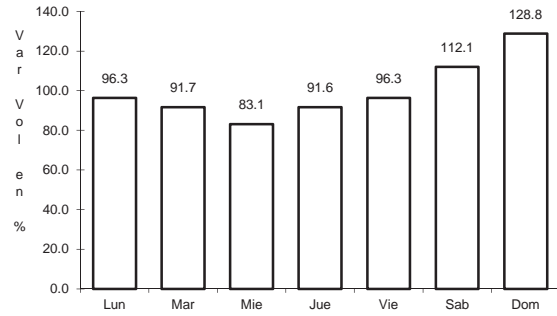


Km: 0.00 Tipo: 3 Sent: 0

38 CARR: Ramal a Lamadrid

CLAVE: 05522

RUTA: COA-042



Km: 0.00

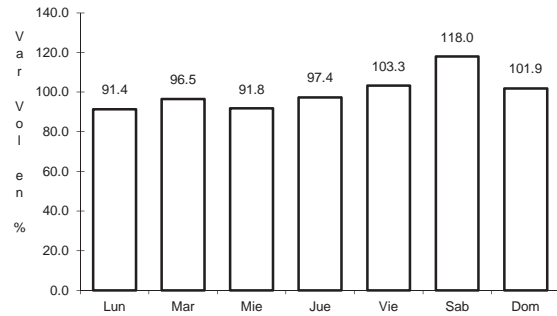
Tipo: 3

Sent: 0

39 CARR: Sabinas - Don Martín

CLAVE: 05501

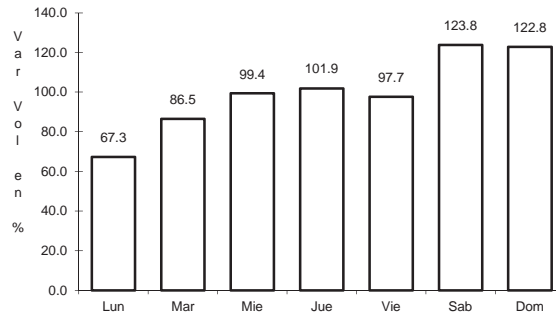
RUTA: COA-025



Km: 0.00

Tipo: 3

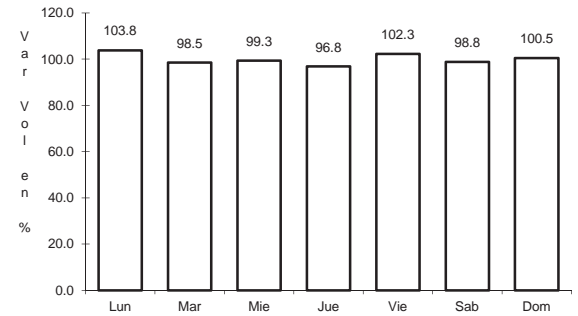
Sent: 0



Km: 53.00

Tipo: 3

Sent: 0



Km: 66.00

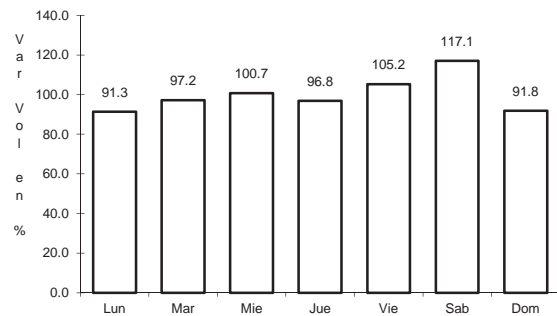
Tipo: 1

Sent: 0

40 CARR: Saltillo - Arteaga

CLAVE: 05008

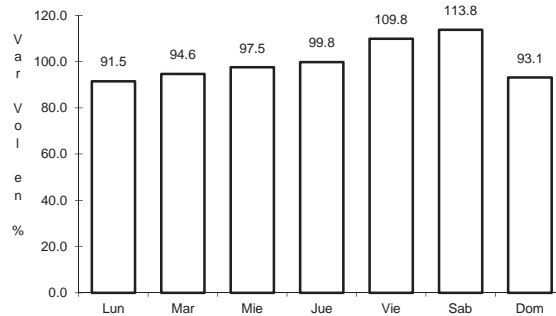
RUTA: COA-106



Km: 0.00

Tipo: 3

Sent: 1



Km: 0.00

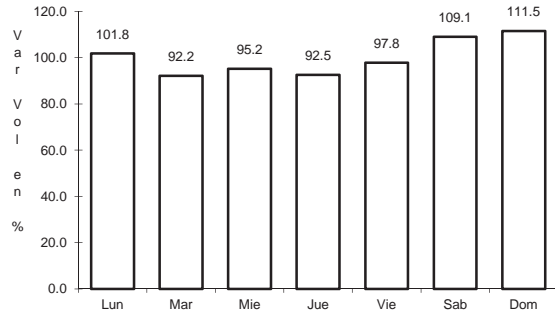
Tipo: 3

Sent: 2

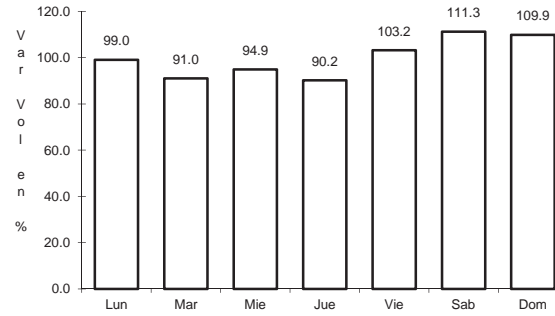
41 CARR: San Buenaventura - Estación Hermanas

CLAVE: 05004

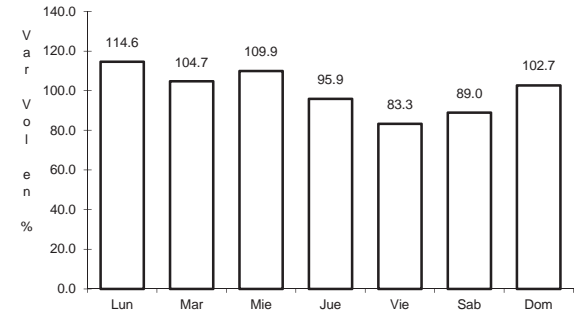
ruta: COA-034



Km: 0.00 Tipo: 3 Sent: 0



Km: 15.71 Tipo: 1 Sent: 0

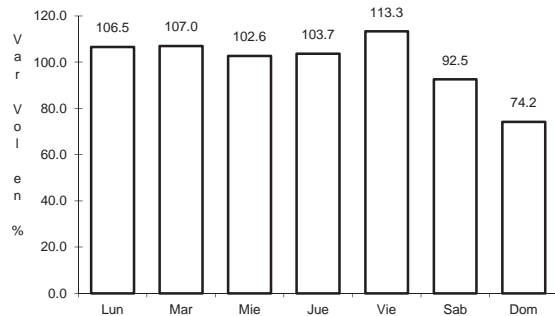


Km: 50.00 Tipo: 1 Sent: 0

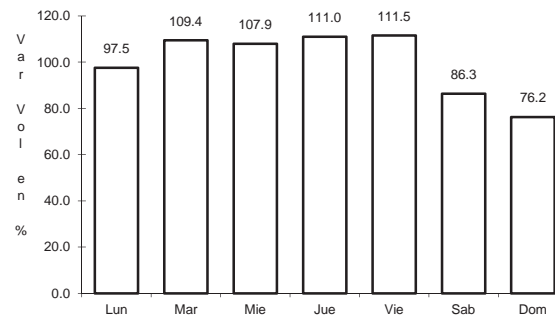
42 CARR: T. C. (Ent. Morelos - Saltillo) - Parras de La Fuente

CLAVE: 05510

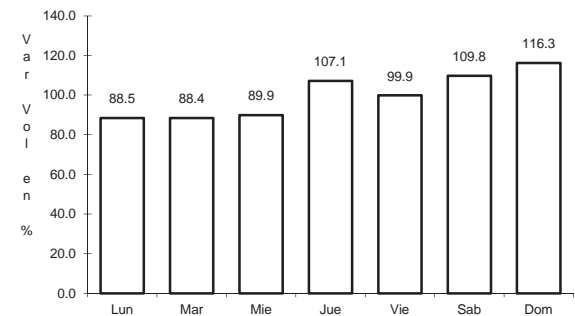
ruta: COA-105



Km: 0.00 Tipo: 3 Sent: 1



Km: 0.00 Tipo: 3 Sent: 2

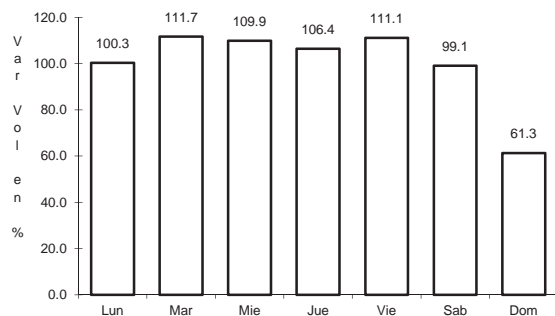


Km: 102.00 Tipo: 1 Sent: 0

43 CARR: T. C. (Saltillo - Monclova) - Ramos Arizpe

CLAVE: 05508

ruta: COA

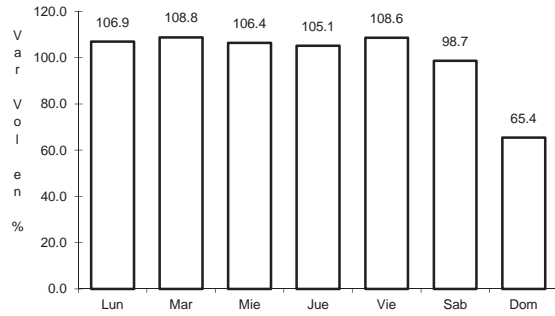


Km: 0.00 Tipo: 3 Sent: 0

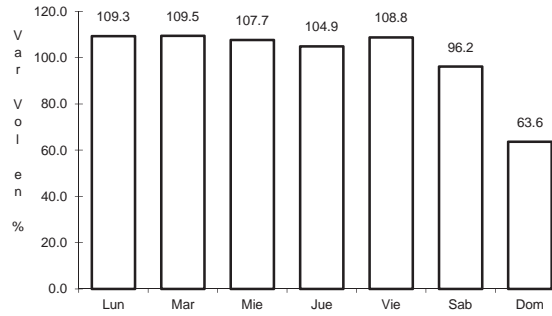
44 CARR: Torreón - Escuadrón 201

CLAVE: 05022

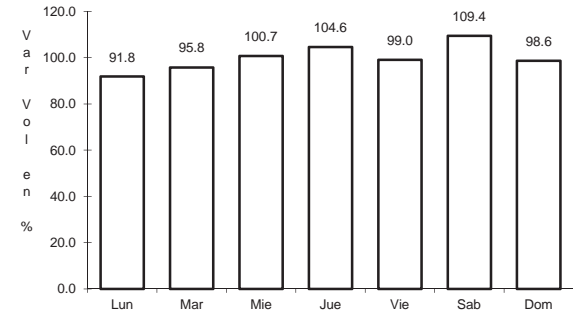
RUTA: COA-011



Km: 0.00 Tipo: 3 Sent: 1



Km: 0.00 Tipo: 3 Sent: 2

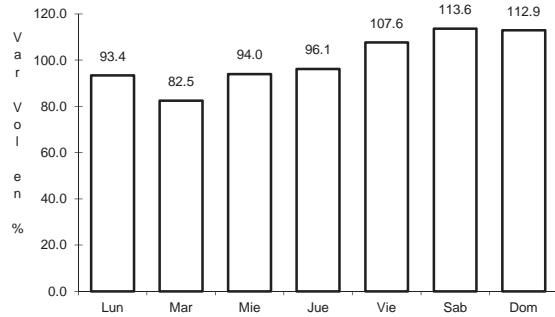


Km: 17.06 Tipo: 1 Sent: 0

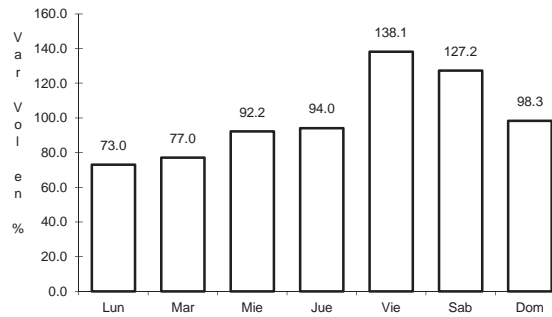
45 CARR: Nueva Rosita - Ent. Allende (Cuota)

CLAVE: 05500

RUTA: COA-D



Km: 0.00 Tipo: 3 Sent: 1

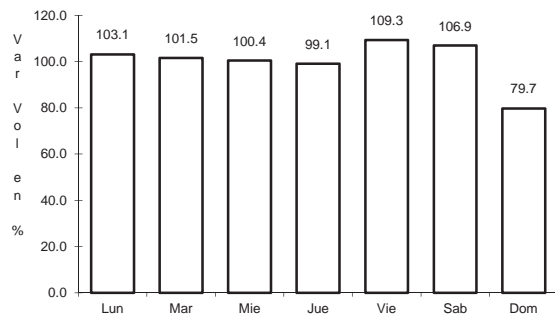


Km: 0.00 Tipo: 3 Sent: 2

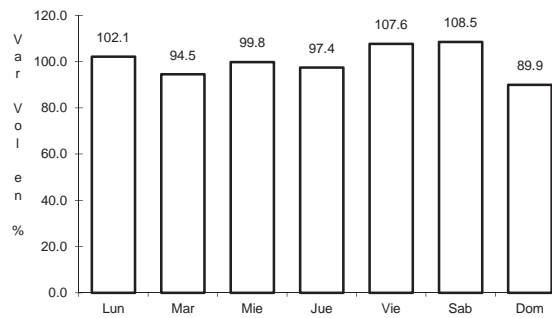
46 CARR: Corredor Libramiento de San Pedro

CLAVE: 05023

RUTA: MEX-S-030-D



Km: 0.00 Tipo: 3 Sent: 0

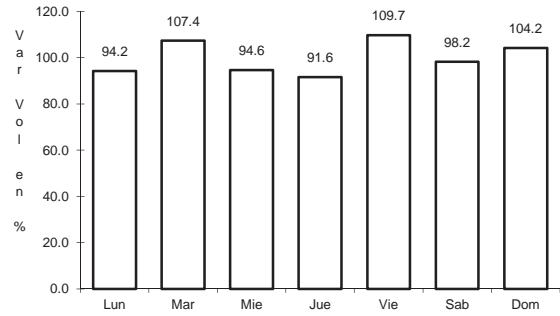


Km: 5.19 Tipo: 1 Sent: 0

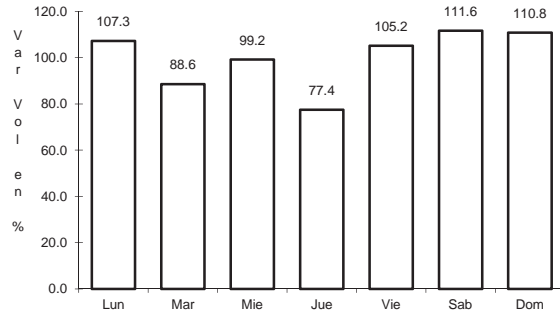
47 CARR: Matamoros - El Fresno

CLAVE: 05023

RUTA: MEX-S-030-D



Km: 0.00 Tipo: 3 Sent: 0

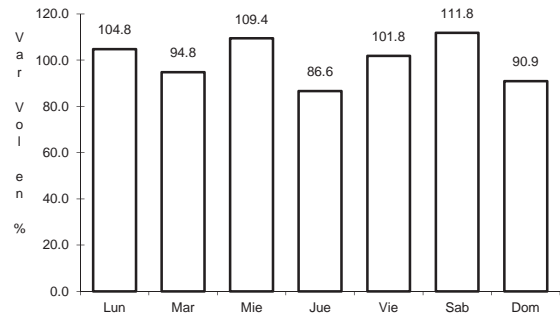


Km: 12.60 Tipo: 1 Sent: 0

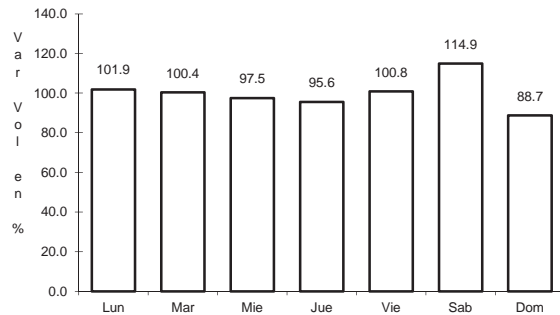
48 CARR: Matamoros - La Unión

CLAVE: 05023

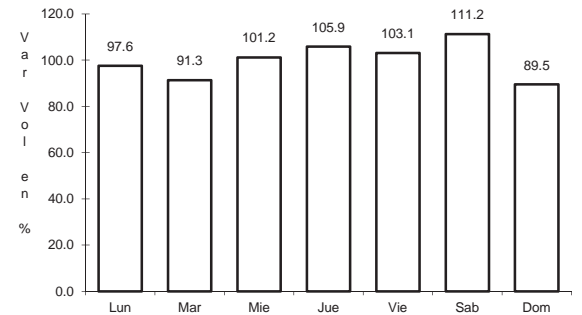
RUTA: MEX-S-030-D



Km: 1.00 Tipo: 3 Sent: 1



Km: 1.00 Tipo: 3 Sent: 2



Km: 14.09 Tipo: 1 Sent: 0