

# BAJA CALIFORNIA SUR

NO. INDICE	CARRETERA	---RED FEDERAL LIBRE---	ruta
1	Cabo San Lucas - La Paz		MEX-001
2	Cd. Constitución - Puerto San Carlos		MEX-001
3	Cd. Insurgentes - Loreto		MEX-001
4	Ent. Punta Prieta - Guerrero Negro		MEX-001
5	La Paz - Cd. Insurgentes		MEX-001
6	La Paz - Pichilingue		MEX-001
7	Libramiento de Cabo San Lucas		MEX-001
8	Loreto - Santa Rosalía		MEX-001
9	Ramal a Aeropuerto de La Paz		MEX-001
10	Ramal a Aeropuerto de Los Cabos		MEX-001
11	Ramal a Los Paredones		MEX-001
12	Ramal a Miraflores		MEX-001
13	Ramal a Puerto Escondido		MEX-001
14	Ramal a San Ignacio		MEX-001
15	Ramal a Santiago		MEX-001
16	Ramal Aeropista San Ignacio		MEX-001
17	Ramal Aeropista Santa Rosalía		MEX-001
18	San Pedro - Cabo San Lucas		MEX-019
19	Santa Rosalía - Guerrero Negro		MEX-001
		---RED FEDERAL DE CUOTA---	
20	Libramiento San José del Cabo - Aeropuerto Los Cabos (Cuota)		MEX-001D
		---RED ESTATAL LIBRE---	
21	Cd. Insurgentes - La Purísima		BCS-001
22	Cd. Insurgentes - Pto. Adolfo López Mateos		BCS
23	Ent. Campo Fisher - Punta Abreojos		BCS
24	La Paz - Ensenada de Muertos		BCS-246
25	Libramiento de La Paz		BCS
26	Libramiento Norte de La Paz		BCS
27	Ramal a Benito Juárez		BCS
28	Ramal a Ejido Ley Federal de Aguas Número Cuatro		BCS
29	Ramal a El Carrizal		BCS
30	Ramal a Guerrero Negro		BCS
31	Ramal a La Ribera		BCS
32	Ramal a Melitón Albáñez		BCS
33	Ramal a Santa Catarina		BCS
		---CARRETERAS INTEGRADAS POR TRAMOS FEDERALES Y ESTATALES---	
34	Ramal a Bahía de Tortugas		MEX-001-BCS
35	Ramal a Ejido Ley Federal de Aguas Número Dos		BCS-MEX-001
36	Ramal a Ley Federal de Aguas Número Cinco		BCS-MEX-001
37	Ramal a San Juan de La Costa		BCS-163-MEX-001

# 03 BAJA CALIFORNIA SUR

SECRETARÍA DE COMUNICACIONES Y TRANSPORTES  
DIRECCIÓN GENERAL DE SERVICIOS TÉCNICOS



- 1 - Número Índice
- Red Federal Libre
- Red Federal Cuota
- Red Federal Integrada por Tramos Libres y de Cuota
- Red Estatal Libre
- Red Estatal Cuota
- Carreteras Integradas por Tramos Federales y Estatales

BAJA CALIFORNIA SUR

1 CARR: Cabo San Lucas - La Paz

CLAVE: 03102

RUTA: MEX-001

AÑO: 2013

LUGAR	ESTACION				CLASIFICACION VEHICULAR EN PORCIENTO										COORDENADAS					
	KM	TE	SC	TDPA	M	A	B	C2	C3	T3S2	T3S3	T3S2R4	OTROS	A	B	C	K'	D	LATITUD	LONGITUD
Cabo San Lucas	0.00	3	1	17781	1.4	87.7	2.7	6.0	0.8	0.5	0.5	0.1	0.3	89.1	2.7	8.2	0.091	0.503	22.901701	-109.896136
Cabo San Lucas	0.00	3	2	17963	1.4	86.7	3.0	6.6	0.8	0.6	0.5	0.1	0.3	88.1	3.0	8.9	0.099	0.503	22.901701	-109.896135
El Tule	13.00	3	1	12466	0.9	89.7	3.2	4.7	0.6	0.4	0.4	0.1	0.0	90.6	3.2	6.2	0.077	0.510	22.971459	-109.787583
El Tule	13.00	3	2	11992	1.4	88.3	3.4	5.2	0.8	0.4	0.4	0.1	0.0	89.7	3.4	6.9	0.072	0.510	22.971461	-109.787582
San José del Cabo	33.00	1	1	16547	1.1	90.0	2.7	4.7	0.8	0.4	0.3	0.0	0.0	91.1	2.7	6.2	0.083	0.502	23.020073	-109.720126
San José del Cabo	33.00	1	2	16446	0.6	89.4	3.1	5.4	0.8	0.4	0.3	0.0	0.0	90.0	3.1	6.9	0.085	0.502	23.020074	-109.720130
San José del Cabo	33.00	3	1	20981	1.8	85.8	3.1	7.5	0.7	0.5	0.6	0.0	0.0	87.6	3.1	9.3	0.087	0.515	23.073916	-109.705987
San José del Cabo	33.00	3	2	22321	1.3	85.2	3.4	8.0	0.9	0.6	0.6	0.0	0.0	86.5	3.4	10.1	0.095	0.515	23.073917	-109.705986
T. Der. Santa Catarina	41.00	1	1	12466	1.2	84.1	3.3	7.1	1.4	1.2	1.1	0.1	0.5	85.3	3.3	11.4	0.067	0.503	23.132099	-109.710786
T. Der. Santa Catarina	41.00	1	2	12611	1.6	82.0	3.5	8.2	1.5	1.3	1.3	0.1	0.5	83.6	3.5	12.9	0.063	0.503	23.132098	-109.710785
T. Izq. Aeropuerto	43.46	1	1	9925	1.0	87.8	2.3	5.6	1.0	1.2	1.0	0.0	0.1	88.8	2.3	8.9	0.061	0.507	23.153811	-109.708608
T. Izq. Aeropuerto	43.46	1	2	10205	1.4	86.8	2.5	5.8	1.0	1.3	1.1	0.0	0.1	88.2	2.5	9.3	0.058	0.507	23.153820	-109.708620
Santa Anita	46.00	1	0	6200	0.9	83.9	2.0	7.1	1.9	3.0	0.8	0.2	0.2	84.8	2.0	13.2	0.074	0.504	23.171356	-109.704756
Santa Anita	46.00	3	0	3985	0.5	85.6	1.6	5.6	2.7	2.6	1.0	0.3	0.1	86.1	1.6	12.3	0.084	0.501	23.187610	-109.707531
T. Izq. Miraflores	71.50	3	0	2169	0.4	86.9	1.9	5.3	1.4	2.6	0.6	0.8	0.1	87.3	1.9	10.8	0.090	0.502	23.372976	-109.751649
T. Izq. Santiago	84.00	3	0	2519	0.4	85.6	2.0	6.7	0.9	2.8	0.8	0.7	0.1	86.0	2.0	12.0	0.082	0.516	23.477210	-109.694409
La Cueva	95.20	3	0	2378	0.7	81.1	2.9	9.1	1.5	2.2	0.9	1.0	0.6	81.8	2.9	15.3	0.075	0.503	23.563642	-109.677403
T. Der. Bahía de Las Palmas	110.00	3	0	3451	0.8	83.3	2.5	8.7	0.7	2.9	0.5	0.4	0.2	84.1	2.5	13.4	0.081	0.516	23.680653	-109.712476
San Bartolo	128.50	1	0	1898	0.6	81.5	2.1	7.4	2.2	3.8	1.0	1.3	0.1	82.1	2.1	15.8	0.068	0.514	23.742881	-109.825163
San Antonio	156.00	3	0	1847	0.7	77.9	3.0	8.6	2.4	4.0	1.2	1.8	0.4	78.6	3.0	18.4	0.075	0.503	23.809780	-110.059148
El Triunfo	162.80	1	0	1868	0.6	79.5	3.2	7.9	1.7	3.4	1.4	1.7	0.6	80.1	3.2	16.7	0.079	0.507	23.806017	-110.102922
T. Izq. Todos Santos	184.40	3	1	3157	0.5	83.1	1.2	9.5	1.5	2.6	0.9	0.6	0.1	83.6	1.2	15.2	0.122	0.507	23.889625	-110.256949
T. Izq. Todos Santos	184.40	3	2	3247	0.6	82.7	1.4	9.5	1.7	2.7	0.9	0.4	0.1	83.3	1.4	15.3	0.081	0.507	23.889625	-110.256949
San Pedro	191.00	1	1	3534	0.8	83.3	1.1	7.6	2.0	2.6	1.3	0.9	0.4	84.1	1.1	14.8	0.079	0.515	23.905197	-110.259339
San Pedro	191.00	1	2	3334	0.6	81.9	1.2	8.3	2.1	3.1	1.5	1.0	0.3	82.5	1.2	16.3	0.075	0.515	23.905201	-110.259341
San Pedro	191.00	3	1	3906	0.6	86.4	0.9	6.1	1.5	2.5	1.0	0.7	0.3	87.0	0.9	12.1	0.103	0.505	23.943403	-110.277916
San Pedro	191.00	3	2	3823	0.9	84.7	0.9	6.8	1.7	2.7	1.1	0.8	0.4	85.6	0.9	13.5	0.083	0.505	23.943403	-110.277916
Limite Zona Urbana de La Paz	211.00	1	1	6860	2.0	83.3	1.4	6.1	1.5	2.3	1.9	1.0	0.5	85.3	1.4	13.3	0.060	0.518	24.048533	-110.301266
Limite Zona Urbana de La Paz	211.00	1	2	6383	3.3	80.7	1.5	6.5	1.7	2.5	2.1	1.1	0.6	84.0	1.5	14.5	0.064	0.518	24.048534	-110.301265
La Paz	213.00																			

BAJA CALIFORNIA SUR

2 CARR: Cd. Constitución - Puerto San Carlos

CLAVE: 03231

RUTA: MEX-001

AÑO: 2013

LUGAR	ESTACION				CLASIFICACION VEHICULAR EN PORCIENTO													COORDENADAS		
	KM	TE	SC	TDPA	M	A	B	C2	C3	T3S2	T3S3	T3S2R4	OTROS	A	B	C	K'	D	LATITUD	LONGITUD
Cd. Constitución	0.00	3	0	2884	0.4	83.4	1.2	10.8	0.6	2.7	0.5	0.0	0.4	83.8	1.2	15.0	0.082	0.506	25.039257	-111.678861
T. Der. Benito Juárez	10.00	1	0	2080	0.4	83.3	1.1	11.0	1.2	2.2	0.5	0.1	0.2	83.7	1.1	15.2	0.078	0.500	25.036507	-111.767302
T. Der. Benito Juárez	10.00	3	0	2020	0.8	81.9	1.5	10.7	1.4	1.6	1.0	0.5	0.6	82.7	1.5	15.8	0.084	0.501	25.034213	-111.772515
Puerto San Carlos	57.70																			

3 CARR: Cd. Insurgentes - Loreto

CLAVE: 03092

RUTA: MEX-001

AÑO: 2013

LUGAR	ESTACION				CLASIFICACION VEHICULAR EN PORCIENTO													COORDENADAS		
	KM	TE	SC	TDPA	M	A	B	C2	C3	T3S2	T3S3	T3S2R4	OTROS	A	B	C	K'	D	LATITUD	LONGITUD
Cd. Insurgentes	0.00	3	0	2929	0.9	76.4	2.2	10.4	1.3	6.1	1.4	0.8	0.5	77.3	2.2	20.5	0.088	0.503	25.260134	-111.765289
T. Izq. Ley Federal de Aguas Número Uno	7.00	3	0	1344	0.5	72.8	1.9	10.2	1.8	9.0	2.4	1.1	0.3	73.3	1.9	24.8	0.093	0.500	25.334469	-111.632079
T. Der. Ley Federal de Aguas Número Dos	17.00	3	0	1588	0.7	71.5	2.0	10.0	2.2	9.3	2.5	1.5	0.3	72.2	2.0	25.8	0.069	0.512	25.316915	-111.658941
T. Der. Puerto Agua Verde	65.00	1	0	1293	0.5	68.0	2.7	12.5	1.6	11.0	2.3	1.1	0.3	68.5	2.7	28.8	0.073	0.519	25.607784	-111.317043
T. Der. Puerto Agua Verde	65.00	3	0	1272	0.4	68.2	2.9	12.4	2.2	9.1	3.4	1.0	0.4	68.6	2.9	28.5	0.076	0.524	25.609109	-111.314875
El Ligüi	84.50	1	0	1576	0.5	69.7	2.8	14.1	1.6	8.0	2.0	1.1	0.2	70.2	2.8	27.0	0.074	0.511	25.734238	-111.271054
T. Der. Puerto Escondido	95.40	1	0	1549	0.3	71.6	2.9	11.7	2.3	8.3	1.8	1.0	0.1	71.9	2.9	25.2	0.085	0.510	25.799279	-111.326805
T. Der. Puerto Escondido	95.40	3	0	1761	0.3	71.1	3.1	13.4	2.0	7.4	1.8	0.8	0.1	71.4	3.1	25.5	0.076	0.504	25.804355	-111.328844
Nopoló	109.50	1	0	2459	0.3	73.9	1.7	15.1	1.5	5.6	1.2	0.6	0.1	74.2	1.7	24.1	0.069	0.515	25.935343	-111.368936
T. Der. Aeropuerto de Loreto	117.30	1	0	3365	0.3	76.8	1.4	14.0	1.1	4.7	1.0	0.4	0.3	77.1	1.4	21.5	0.078	0.500	25.987672	-111.366965
T. Der. Loreto	120.00	1	1	2242	0.4	79.4	1.2	12.6	1.4	3.5	1.1	0.3	0.1	79.8	1.2	19.0	0.086	0.509	26.004287	-111.366416
T. Der. Loreto	120.00	1	2	2328	0.4	77.5	1.3	14.1	1.6	3.6	1.1	0.3	0.1	77.9	1.3	20.8	0.080	0.509	26.004287	-111.366416

4 CARR: Ent. Punta Prieta - Guerrero Negro

CLAVE: 00321

RUTA: MEX-001

AÑO: 2013

LUGAR	ESTACION				CLASIFICACION VEHICULAR EN PORCIENTO													COORDENADAS		
	KM	TE	SC	TDPA	M	A	B	C2	C3	T3S2	T3S3	T3S2R4	OTROS	A	B	C	K'	D	LATITUD	LONGITUD
Parador Punta Prieta	0.00	3	0	928	0.5	50.4	2.9	12.9	2.2	28.0	2.6	0.5	0.0	50.9	2.9	46.2	0.065	0.521	29.042324	-114.152313
Rosarito	50.60	3	0	1049	0.6	53.5	2.5	10.8	1.6	26.3	3.9	0.4	0.4	54.1	2.5	43.4	0.075	0.529	28.629836	-114.023830
Tanatán	70.10	3	0	934	1.2	52.5	2.6	12.2	1.7	25.0	3.8	0.5	0.5	53.7	2.6	43.7	0.070	0.535	28.447851	-113.993958
Tampico	105.00	1	0	1199	1.0	56.5	2.5	13.5	1.0	21.7	3.2	0.4	0.2	57.5	2.5	40.0	0.078	0.526	28.217344	-114.000074
Lim. Edos. Term. B.C. Ppia. B.C.S. (Paralelo 28)	128.56																			
Ent. Guerrero Negro	130.00	1	0	2083	1.0	71.7	1.0	7.0	1.0	15.2	2.3	0.5	0.3	72.7	1.0	26.3	0.067	0.527	27.971285	-114.013760

BAJA CALIFORNIA SUR

5 CARR: La Paz - Cd. Insurgentes

CLAVE: 03101

RUTA: MEX-001

AÑO: 2013

LUGAR	ESTACION				CLASIFICACION VEHICULAR EN PORCIENTO													COORDENADAS		
	KM	TE	SC	TDPA	M	A	B	C2	C3	T3S2	T3S3	T3S2R4	OTROS	A	B	C	K'	D	LATITUD	LONGITUD
La Paz	0.00	3	1	10780	1.1	87.0	1.5	3.9	0.5	1.8	2.9	0.5	0.8	88.1	1.5	10.4	0.081	0.515	24.121073	-110.337057
La Paz	0.00	3	2	10166	0.6	86.2	1.5	4.6	0.5	2.0	3.2	0.5	0.9	86.8	1.5	11.7	0.063	0.515	24.121098	-110.337022
T. Izq. Aeropuerto	8.90	1	1	10069	1.1	87.9	0.6	7.5	0.8	1.2	0.6	0.1	0.2	89.0	0.6	10.4	0.075	0.505	24.110924	-110.354518
T. Izq. Aeropuerto	8.90	1	2	9889	1.1	87.3	0.6	8.0	0.9	1.2	0.6	0.1	0.2	88.4	0.6	11.0	0.078	0.505	24.111067	-110.354206
T. Izq. Aeropuerto	8.90	3	1	8201	1.1	84.6	0.5	7.2	1.3	2.4	1.0	0.8	1.1	85.7	0.5	13.8	0.068	0.511	24.104490	-110.369130
T. Izq. Aeropuerto	8.90	3	2	7841	1.7	82.6	0.5	8.2	1.4	2.5	1.1	0.9	1.1	84.3	0.5	15.2	0.065	0.511	24.104492	-110.369131
El Centenario	13.50	3	1	3411	1.0	84.9	0.5	8.5	1.5	2.4	0.7	0.3	0.2	85.9	0.5	13.6	0.097	0.510	24.113541	-110.424884
El Centenario	13.50	3	2	3556	1.1	83.4	0.7	9.3	1.7	2.5	0.9	0.3	0.1	84.5	0.7	14.8	0.095	0.510	24.113540	-110.424877
T. Der. San Juan de La Costa	17.00	1	0	6267	0.6	78.4	1.2	10.4	2.0	4.4	1.3	1.1	0.6	79.0	1.2	19.8	0.066	0.503	24.117934	-110.431778
T. Der. San Juan de La Costa	17.00	3	0	2530	0.7	67.6	2.3	14.7	3.5	6.3	2.7	1.5	0.7	68.3	2.3	29.4	0.070	0.505	24.119867	-110.441665
T. Der. Alfredo V. Bonfil	24.00	3	0	2675	1.0	73.2	1.5	9.6	3.2	7.9	1.8	1.3	0.5	74.2	1.5	24.3	0.077	0.504	24.090559	-110.519559
T. Izq. El Conejo	79.60	1	0	2226	0.8	67.7	2.4	12.7	2.5	8.4	2.8	2.1	0.6	68.5	2.4	29.1	0.069	0.505	24.178719	-110.940167
T. Izq. El Conejo	79.60	3	0	2254	0.6	67.8	2.4	12.2	2.2	8.9	3.8	1.6	0.5	68.4	2.4	29.2	0.068	0.507	24.189791	-110.945715
El Ciento Veintiocho	118.20	1	0	2205	1.1	66.6	2.9	12.4	3.0	8.7	3.5	1.6	0.2	67.7	2.9	29.4	0.076	0.506	24.462557	-111.206321
Santa Rita	156.70	1	0	2392	1.6	68.7	2.5	10.9	2.8	7.9	3.1	1.8	0.7	70.3	2.5	27.2	0.070	0.509	24.584996	-111.458480
Santa Rita	156.70	3	0	2580	0.8	66.5	2.8	17.1	2.7	5.6	2.8	1.2	0.5	67.3	2.8	29.9	0.083	0.503	24.594994	-111.471960
Cd. Constitución	213.00	1	0	5291	0.6	78.9	1.3	8.3	2.4	5.0	1.9	0.9	0.7	79.5	1.3	19.2	0.081	0.593	25.015036	-111.665241
Cd. Constitución	213.00	3	1	3915	0.5	82.4	1.3	9.6	1.2	3.0	1.1	0.3	0.6	82.9	1.3	15.8	0.076	0.517	25.058397	-111.685351
Cd. Constitución	213.00	3	2	4198	0.9	80.6	1.5	10.5	1.3	3.0	1.1	0.4	0.7	81.5	1.5	17.0	0.072	0.517	25.058395	-111.685352
T. Der. Ley Federal de Aguas Número Cuatro	229.00	1	1	2875	0.5	80.0	1.1	10.0	1.5	3.8	1.3	0.8	1.0	80.5	1.1	18.4	0.069	0.504	25.195050	-111.748317
T. Der. Ley Federal de Aguas Número Cuatro	229.00	1	2	2829	0.6	77.6	1.2	11.6	1.6	4.4	1.2	0.8	1.0	78.2	1.2	20.6	0.065	0.504	25.195056	-111.748321
Cd. Insurgentes	236.50	1	1	2543	1.0	81.2	1.1	11.6	1.1	2.6	0.8	0.5	0.1	82.2	1.1	16.7	0.077	0.502	25.244083	-111.771079
Cd. Insurgentes	236.50	1	2	2523	0.4	80.1	1.2	12.7	1.4	2.9	0.8	0.4	0.1	80.5	1.2	18.3	0.082	0.502	25.244085	-111.771081

6 CARR: La Paz - Pichilingue

CLAVE: 03230

RUTA: MEX-001

AÑO: 2013

LUGAR	ESTACION				CLASIFICACION VEHICULAR EN PORCIENTO													COORDENADAS		
	KM	TE	SC	TDPA	M	A	B	C2	C3	T3S2	T3S3	T3S2R4	OTROS	A	B	C	K'	D	LATITUD	LONGITUD
La Paz	0.00	3	1	4929	2.1	89.9	1.3	5.1	0.4	0.6	0.4	0.0	0.2	92.0	1.3	6.7	0.066	0.502	24.180516	-110.302339
La Paz	0.00	3	2	4972	1.5	90.1	1.4	5.5	0.4	0.6	0.3	0.0	0.2	91.6	1.4	7.0	0.102	0.502	24.180517	-110.302338
Escuela Técnica Pesquera	9.30	3	0	1696	1.4	79.0	0.8	6.9	2.7	3.2	2.5	2.1	1.4	80.4	0.8	18.8	0.091	0.509	24.230009	-110.308595
Pichilingue	17.00	1	0	2431	1.3	74.2	1.2	8.2	4.8	5.1	2.5	1.9	0.8	75.5	1.2	23.3	0.090	0.503	24.274731	-110.325790

BAJA CALIFORNIA SUR

7 CARR: Libramiento de Cabo San Lucas

CLAVE: 03100

RUTA: MEX-001

AÑO: 2013

LUGAR	ESTACION				CLASIFICACION VEHICULAR EN PORCIENTO													COORDENADAS		
	KM	TE	SC	TDPA	M	A	B	C2	C3	T3S2	T3S3	T3S2R4	OTROS	A	B	C	K'	D	LATITUD	LONGITUD
T. C. San Pedro - Cabo San Lucas	0.00	3	1	15379	2.1	84.9	1.8	8.6	1.1	0.5	0.4	0.4	0.2	87.0	1.8	11.2	0.083	0.512	22.900032	-109.922712
T. C. San Pedro - Cabo San Lucas	0.00	3	2	16116	2.7	82.9	2.1	9.6	1.2	0.5	0.4	0.4	0.2	85.6	2.1	12.3	0.072	0.512	22.900033	-109.922713
T. C. Cabo San Lucas - La Paz	3.00	1	1	16175	1.1	82.9	4.0	8.1	0.7	1.5	1.4	0.1	0.2	84.0	4.0	12.0	0.079	0.506	22.900438	-109.910455
T. C. Cabo San Lucas - La Paz	3.00	1	2	16544	1.2	81.7	4.3	8.5	0.8	1.7	1.5	0.1	0.2	82.9	4.3	12.8	0.080	0.506	22.900438	-109.910455

8 CARR: Loreto - Santa Rosalía

CLAVE: 03393

RUTA: MEX-001

AÑO: 2013

LUGAR	ESTACION				CLASIFICACION VEHICULAR EN PORCIENTO													COORDENADAS		
	KM	TE	SC	TDPA	M	A	B	C2	C3	T3S2	T3S3	T3S2R4	OTROS	A	B	C	K'	D	LATITUD	LONGITUD
Loreto	0.00	3	0	1478	2.0	71.0	1.5	11.8	2.7	7.5	2.0	0.9	0.6	73.0	1.5	25.5	0.088	0.513	26.025520	-111.356566
Rosarito	63.00	1	0	880	0.8	60.4	2.8	15.8	3.0	12.6	3.0	1.3	0.3	61.2	2.8	36.0	0.076	0.522	26.450260	-111.644621
Rosarito	63.00	3	0	818	0.8	57.6	4.0	14.6	2.3	14.6	3.9	1.8	0.4	58.4	4.0	37.6	0.086	0.532	26.466674	-111.664745
Mulegé	135.00	1	0	5450	1.5	71.2	1.6	13.3	1.4	6.7	2.5	1.0	0.8	72.7	1.6	25.7	0.071	0.504	26.893903	-111.972477
Mulegé	135.00	3	0	1332	1.4	66.6	2.4	14.5	1.3	10.3	2.1	0.8	0.6	68.0	2.4	29.6	0.078	0.500	26.890516	-111.994634
T. Izq. Santa Águeda	189.00	1	0	2188	0.4	74.5	1.6	14.5	1.1	5.7	1.0	0.5	0.7	74.9	1.6	23.5	0.080	0.532	27.274449	-112.244470
T. Izq. Santa Águeda	189.00	3	0	2237	0.4	73.3	1.7	14.8	1.2	6.1	1.5	0.5	0.5	73.7	1.7	24.6	0.077	0.536	27.277636	-112.244580
Santa Rosalía	197.00	1	0	4345	0.5	79.9	1.0	12.6	0.6	3.8	0.9	0.2	0.5	80.4	1.0	18.6	0.072	0.500	27.323162	-112.249037

9 CARR: Ramal a Aeropuerto de La Paz

CLAVE: 03396

RUTA: MEX-001

AÑO: 2013

LUGAR	ESTACION				CLASIFICACION VEHICULAR EN PORCIENTO													COORDENADAS		
	KM	TE	SC	TDPA	M	A	B	C2	C3	T3S2	T3S3	T3S2R4	OTROS	A	B	C	K'	D	LATITUD	LONGITUD
T. C. La Paz - Cd. Insurgentes	0.00	3	1	2619	2.0	89.4	0.3	7.2	0.4	0.3	0.2	0.1	0.1	91.4	0.3	8.3	0.107	0.505	24.101800	-110.366746
T. C. La Paz - Cd. Insurgentes	0.00	3	2	2569	1.9	88.4	0.3	8.5	0.3	0.3	0.1	0.1	0.1	90.3	0.3	9.4	0.121	0.505	24.101849	-110.366706
Aeropuerto	3.44																			

10 CARR: Ramal a Aeropuerto de Los Cabos

CLAVE: 03394

RUTA: MEX-001

AÑO: 2013

LUGAR	ESTACION				CLASIFICACION VEHICULAR EN PORCIENTO													COORDENADAS		
	KM	TE	SC	TDPA	M	A	B	C2	C3	T3S2	T3S3	T3S2R4	OTROS	A	B	C	K'	D	LATITUD	LONGITUD
T. C. Cabo San Lucas - La Paz	0.00	3	0	7521	0.5	80.9	6.7	11.5	0.1	0.1	0.1	0.1	0.0	81.4	6.7	11.9	0.108	0.506	23.161261	-109.713337
Aeropuerto Los Cabos	1.00																			

BAJA CALIFORNIA SUR

11 CARR: Ramal a Los Paredones

CLAVE: 03407

RUTA: MEX-001

AÑO: 2013

LUGAR	ESTACION				CLASIFICACION VEHICULAR EN PORCIENTO														COORDENADAS	
	KM	TE	SC	TDPA	M	A	B	C2	C3	T3S2	T3S3	T3S2R4	OTROS	A	B	C	K'	D	LATITUD	LONGITUD
T. C. Cd. Santa Rosalía - Guerrero Negro Paredones	0.00	3	0	853	0.8	86.2	1.4	2.4	2.8	3.7	2.3	0.2	0.2	87.0	1.4	11.6	0.098	0.515	27.301230	-112.899144
	1.40																			

12 CARR: Ramal a Miraflores

CLAVE: 03407

RUTA: MEX-001

AÑO: 2013

LUGAR	ESTACION				CLASIFICACION VEHICULAR EN PORCIENTO														COORDENADAS	
	KM	TE	SC	TDPA	M	A	B	C2	C3	T3S2	T3S3	T3S2R4	OTROS	A	B	C	K'	D	LATITUD	LONGITUD
T. C. Cabo San Lucas - La Paz	0.00	3	1	1025	0.1	87.0	0.5	11.1	0.8	0.5	0.0	0.0	0.0	87.1	0.5	12.4	0.085	0.525	23.370660	-109.753763
T. C. Cabo San Lucas - La Paz Miraflores	0.00	3	2	925	0.2	86.2	0.5	11.9	0.7	0.5	0.0	0.0	0.0	86.4	0.5	13.1	0.089	0.525	23.370664	-109.753765
	2.20																			

13 CARR: Ramal a Puerto Escondido

CLAVE: 03407

RUTA: MEX-001

AÑO: 2013

LUGAR	ESTACION				CLASIFICACION VEHICULAR EN PORCIENTO														COORDENADAS	
	KM	TE	SC	TDPA	M	A	B	C2	C3	T3S2	T3S3	T3S2R4	OTROS	A	B	C	K'	D	LATITUD	LONGITUD
T. C. Cd. Insurgentes - Loreto Puerto Escondido	0.00	3	0	326	0.1	76.0	1.0	21.6	0.5	0.8	0.0	0.0	0.0	76.1	1.0	22.9	0.101	0.535	25.802765	-111.326949
	2.50																			

14 CARR: Ramal a San Ignacio

CLAVE: 03413

RUTA: MEX-001

AÑO: 2013

LUGAR	ESTACION				CLASIFICACION VEHICULAR EN PORCIENTO														COORDENADAS	
	KM	TE	SC	TDPA	M	A	B	C2	C3	T3S2	T3S3	T3S2R4	OTROS	A	B	C	K'	D	LATITUD	LONGITUD
T. C. Santa Rosalía - Guerrero Negro San Ignacio	0.00	3	0	1769	1.1	85.8	1.2	8.4	2.0	1.3	0.1	0.0	0.1	86.9	1.2	11.9	0.085	0.503	27.300243	-112.893983
	2.70																			

15 CARR: Ramal a Santiago

CLAVE: 03051

RUTA: MEX-001

AÑO: 2013

LUGAR	ESTACION				CLASIFICACION VEHICULAR EN PORCIENTO														COORDENADAS	
	KM	TE	SC	TDPA	M	A	B	C2	C3	T3S2	T3S3	T3S2R4	OTROS	A	B	C	K'	D	LATITUD	LONGITUD
T. C. Cabo San Lucas - La Paz	0.00	3	1	632	0.2	87.6	1.9	8.6	0.8	0.4	0.5	0.0	0.0	87.8	1.9	10.3	0.084	0.506	23.474216	-109.695769
T. C. Cabo San Lucas - La Paz Santiago	0.00	3	2	617	0.0	86.9	2.1	9.5	0.9	0.4	0.2	0.0	0.0	86.9	2.1	11.0	0.086	0.506	23.474217	-109.695745
	2.30																			



BAJA CALIFORNIA SUR

16 CARR: Ramal Aeropista San Ignacio

CLAVE: 03051

RUTA: MEX-001

AÑO: 2013

LUGAR	ESTACION				CLASIFICACION VEHICULAR EN PORCIENTO													COORDENADAS		
	KM	TE	SC	TDPA	M	A	B	C2	C3	T3S2	T3S3	T3S2R4	OTROS	A	B	C	K'	D	LATITUD	LONGITUD
T. C. Cd. Santa Rosalía - Guerrero Negro	0.00	3	0	181	0.0	97.1	0.0	2.9	0.0	0.0	0.0	0.0	0.0	97.1	0.0	2.9	0.138	0.506	27.295003	-112.937694
San Ignacio	0.90																			

17 CARR: Ramal Aeropista Santa Rosalía

CLAVE: 03051

RUTA: MEX-001

AÑO: 2013

LUGAR	ESTACION				CLASIFICACION VEHICULAR EN PORCIENTO													COORDENADAS		
	KM	TE	SC	TDPA	M	A	B	C2	C3	T3S2	T3S3	T3S2R4	OTROS	A	B	C	K'	D	LATITUD	LONGITUD
T. C. Cd. Santa Rosalía - Guerrero Negro	0.00	3	0	317	0.0	39.6	0.0	24.9	35.5	0.0	0.0	0.0	0.0	39.6	0.0	60.4	0.082	0.510	27.397781	-112.306649
Santa Rosalía	2.00																			

18 CARR: San Pedro - Cabo San Lucas

CLAVE: 03003

RUTA: MEX-019

AÑO: 2013

LUGAR	ESTACION				CLASIFICACION VEHICULAR EN PORCIENTO													COORDENADAS		
	KM	TE	SC	TDPA	M	A	B	C2	C3	T3S2	T3S3	T3S2R4	OTROS	A	B	C	K'	D	LATITUD	LONGITUD
T. C. Cabo San Lucas - La Paz	0.00	3	1	2503	0.6	86.0	1.1	5.6	1.7	2.8	1.2	0.7	0.3	86.6	1.1	12.3	0.089	0.502	23.880037	-110.253965
T. C. Cabo San Lucas - La Paz	0.00	3	2	2519	0.5	84.2	1.2	6.5	1.8	3.4	1.3	0.9	0.2	84.7	1.2	14.1	0.094	0.502	23.880037	-110.253965
T. Der. Melitón Albáñez	16.00	1	1	2224	0.5	86.1	1.0	4.8	1.9	3.3	1.2	1.1	0.1	86.6	1.0	12.4	0.065	0.500	23.662688	-110.222932
T. Der. Melitón Albáñez	16.00	1	2	2223	1.0	84.1	1.1	5.3	2.1	3.7	1.3	1.3	0.1	85.1	1.1	13.8	0.102	0.500	23.662688	-110.222932
T. Der. Melitón Albáñez	16.00	3	1	2129	0.7	82.0	2.3	7.5	1.7	3.4	1.2	0.8	0.4	82.7	2.3	15.0	0.075	0.517	23.643288	-110.226811
T. Der. Melitón Albáñez	16.00	3	2	2281	0.5	81.7	2.3	7.7	1.7	3.6	1.3	0.8	0.4	82.2	2.3	15.5	0.089	0.517	23.643289	-110.226811
Todos Santos	52.00	1	0	6364	0.8	83.0	0.8	6.2	1.7	5.2	1.2	0.7	0.4	83.8	0.8	15.4	0.074	0.503	23.461228	-110.219130
Todos Santos	52.00	3	0	5800	0.7	82.4	1.1	7.2	2.0	4.2	1.3	0.8	0.3	83.1	1.1	15.8	0.075	0.509	23.439834	-110.219415
El Pescadero	62.00	1	1	2987	0.7	83.0	1.2	8.2	2.0	2.7	1.0	0.9	0.3	83.7	1.2	15.1	0.077	0.509	23.380644	-110.182331
El Pescadero	62.00	1	2	2873	0.8	81.5	1.3	8.7	2.1	3.2	1.1	1.0	0.3	82.3	1.3	16.4	0.067	0.509	23.380644	-110.182331
El Pescadero	62.00	3	1	2159	0.6	79.6	3.5	8.8	2.1	3.4	1.1	0.7	0.2	80.2	3.5	16.3	0.118	0.502	23.354840	-110.165793
El Pescadero	62.00	3	2	2135	0.7	76.7	4.2	10.1	2.4	3.8	1.1	0.8	0.2	77.4	4.2	18.4	0.101	0.502	23.354839	-110.165794
Migriño	102.50	1	1	1743	0.7	79.5	3.7	8.0	1.9	3.7	1.5	0.8	0.2	80.2	3.7	16.1	0.098	0.504	23.056640	-110.095588
Migriño	102.50	1	2	1769	0.6	77.3	4.0	9.0	2.0	4.4	1.5	0.9	0.3	77.9	4.0	18.1	0.094	0.504	23.056638	-110.095585
Cabo San Lucas	131.00	1	1	5738	3.5	75.9	3.2	7.7	3.5	2.1	1.8	1.2	1.1	79.4	3.2	17.4	0.062	0.503	22.916380	-109.966354
Cabo San Lucas	131.00	1	2	5803	3.4	73.5	3.5	8.4	4.0	2.4	2.1	1.4	1.3	76.9	3.5	19.6	0.066	0.503	22.916379	-109.966360

BAJA CALIFORNIA SUR

19 C A R R : Santa Rosalía - Guerrero Negro

CLAVE: 03095

RUTA: MEX-001

AÑO: 2013

L U G A R	E S T A C I O N				C L A S I F I C A C I O N V E H I C U L A R E N P O R C I E N T O													C O O R D E N A D A S		
	KM	TE	SC	TDPA	M	A	B	C2	C3	T3S2	T3S3	T3S2R4	OTROS	A	B	C	K'	D	LATITUD	LONGITUD
Santa Rosalía	0.00	3	0	4135	0.6	72.5	2.9	15.8	2.8	4.1	0.4	0.4	0.5	73.1	2.9	24.0	0.085	0.507	27.360176	-112.277266
Cuesta Infiernillo	12.00	1	0	1198	0.5	59.5	2.6	15.6	7.1	12.5	1.3	0.4	0.5	60.0	2.6	37.4	0.075	0.500	27.386559	-112.354435
Cuesta Infiernillo	12.00	3	0	1081	0.9	62.3	2.1	14.8	3.9	12.2	2.7	0.6	0.5	63.2	2.1	34.7	0.077	0.506	27.384247	-112.384302
T. Izq. San Ignacio	73.60	1	0	2668	0.9	81.1	1.3	6.5	1.8	5.9	1.5	0.4	0.6	82.0	1.3	16.7	0.067	0.506	27.301545	-112.887760
T. Izq. San Ignacio	73.60	3	0	2885	1.1	80.7	1.4	8.2	1.9	4.9	1.0	0.3	0.5	81.8	1.4	16.8	0.070	0.520	27.302083	-112.894452
T. Izq. Punta Abreojos	95.70	1	0	1139	0.7	58.2	2.7	19.9	1.8	13.8	2.1	0.7	0.1	58.9	2.7	38.4	0.071	0.563	27.328226	-113.116158
T. Izq. Punta Abreojos	95.70	3	0	911	0.7	63.9	2.9	13.0	2.2	14.9	1.5	0.8	0.1	64.6	2.9	32.5	0.077	0.527	27.329807	-113.116854
Los Ángeles	117.90	1	0	1324	0.5	63.0	2.2	17.0	2.1	11.7	1.9	1.0	0.6	63.5	2.2	34.3	0.091	0.505	27.474467	-113.290061
Los Ángeles	117.90	3	0	1735	1.1	63.9	2.5	17.0	2.4	10.9	1.5	0.6	0.1	65.0	2.5	32.5	0.080	0.505	27.488490	-113.297942
T. Izq. Vizcaíno	144.00	1	0	2759	0.8	72.0	2.5	11.0	2.3	9.3	1.1	0.4	0.6	72.8	2.5	24.7	0.069	0.508	27.634437	-113.378560
T. Izq. Vizcaíno	144.00	3	0	2128	0.5	66.5	3.1	15.0	1.7	10.2	2.0	0.2	0.8	67.0	3.1	29.9	0.068	0.507	27.655117	-113.388557
T. Der. El Arco	189.00	1	0	1472	0.7	63.7	3.0	12.1	1.9	16.6	1.6	0.1	0.3	64.4	3.0	32.6	0.076	0.520	27.851640	-113.764562
T. Der. El Arco	189.00	3	0	1590	0.8	63.7	3.3	13.6	1.9	14.7	1.5	0.1	0.4	64.5	3.3	32.2	0.067	0.519	27.854685	-113.772302
Ent. Guerrero Negro	216.85	1	0	1875	0.8	66.1	2.6	13.7	2.2	12.4	1.3	0.5	0.4	66.9	2.6	30.5	0.072	0.518	27.965079	-114.010167

20 C A R R : Libramiento San José del Cabo - Aeropuerto Los Cabos (Cuota)

CLAVE: 03392

RUTA: MEX-001D

AÑO: 2013

L U G A R	E S T A C I O N				C L A S I F I C A C I O N V E H I C U L A R E N P O R C I E N T O													C O O R D E N A D A S		
	KM	TE	SC	TDPA	M	A	B	C2	C3	T3S2	T3S3	T3S2R4	OTROS	A	B	C	K'	D	LATITUD	LONGITUD
T. C. Cabo San Lucas - La Paz	0.00	3	0	3487	1.4	86.5	1.2	6.0	1.0	1.1	1.0	0.9	0.9	87.9	1.2	10.9	0.084	0.539	23.049079	-109.714302
Caseta de Cobro Los Cabos	1.52	2	0	3093	0.1	99.0	0.7	0.2	0.0	0.0	0.0	0.0	0.0	99.1	0.7	0.2	0.102	0.500	23.049954	-109.719556
Aeropuerto de Los Cabos	19.50																			

21 C A R R : Cd. Insurgentes - La Purísima

CLAVE: 03005

RUTA: BCS-001

AÑO: 2013

L U G A R	E S T A C I O N				C L A S I F I C A C I O N V E H I C U L A R E N P O R C I E N T O													C O O R D E N A D A S		
	KM	TE	SC	TDPA	M	A	B	C2	C3	T3S2	T3S3	T3S2R4	OTROS	A	B	C	K'	D	LATITUD	LONGITUD
Cd. Insurgentes	0.00	3	0	2564	0.3	83.0	1.1	11.2	1.9	2.1	0.3	0.0	0.1	83.3	1.1	15.6	0.111	0.508	25.270829	-111.783407
Ignacio Zaragoza	18.00	1	0	1701	0.3	81.1	2.2	11.8	1.9	2.2	0.5	0.0	0.0	81.4	2.2	16.4	0.061	0.503	25.389271	-111.838383
Ignacio Zaragoza	18.00	3	1	759	0.3	83.7	0.9	9.6	3.1	1.7	0.6	0.0	0.1	84.0	0.9	15.1	0.094	0.501	25.402033	-111.844354
Ignacio Zaragoza	18.00	3	2	754	2.2	80.8	1.1	10.2	3.2	1.8	0.6	0.0	0.1	83.0	1.1	15.9	0.114	0.501	25.402030	-111.844354
T. Izq. Santo Domingo	28.70	1	0	868	1.6	77.4	1.6	11.5	2.4	3.0	0.4	1.1	1.0	79.0	1.6	19.4	0.082	0.503	25.500472	-111.889861
Francisco Villa	64.00	3	0	267	0.7	77.9	0.9	14.6	2.1	2.0	0.2	1.0	0.6	78.6	0.9	20.5	0.161	0.509	25.801250	-112.029361
La Purísima	107.00	1	0	362	0.0	82.3	0.5	12.7	3.8	0.3	0.1	0.1	0.2	82.3	0.5	17.2	0.077	0.556	26.180083	-112.081944

BAJA CALIFORNIA SUR

22 CARR: Cd. Insurgentes - Pto. Adolfo López Mateos

CLAVE: 03404

RUTA: BCS

AÑO: 2013

LUGAR	ESTACION				CLASIFICACION VEHICULAR EN PORCIENTO										COORDENADAS					
	KM	TE	SC	TDPA	M	A	B	C2	C3	T3S2	T3S3	T3S2R4	OTROS	A	B	C	K'	D	LATITUD	LONGITUD
T. C. Cd. Insurgentes - La Purísima	0.00	3	0	860	0.4	80.0	2.9	13.3	1.7	1.6	0.1	0.0	0.0	80.4	2.9	16.7	0.073	0.516	25.274292	-111.787648
Puerto Adolfo López Mateos	35.50	1	0	967	0.3	86.3	1.7	9.2	1.7	0.8	0.0	0.0	0.0	86.6	1.7	11.7	0.088	0.531	25.192921	-112.101999

23 CARR: Ent. Campo Fisher - Punta Abrejos

CLAVE: 03411

RUTA: BCS

AÑO: 2013

LUGAR	ESTACION				CLASIFICACION VEHICULAR EN PORCIENTO										COORDENADAS					
	KM	TE	SC	TDPA	M	A	B	C2	C3	T3S2	T3S3	T3S2R4	OTROS	A	B	C	K'	D	LATITUD	LONGITUD
T. C. Santa Rosalía - Paralelo 28	0.00	3	0	215	3.3	68.2	1.7	10.8	4.7	1.9	3.9	3.1	2.4	71.5	1.7	26.8	0.135	0.516	27.326929	-113.117700
Punta Abrejos	88.00																			

24 CARR: La Paz - Ensenada de Muertos

CLAVE: 03103

RUTA: BCS-246

AÑO: 2013

LUGAR	ESTACION				CLASIFICACION VEHICULAR EN PORCIENTO										COORDENADAS					
	KM	TE	SC	TDPA	M	A	B	C2	C3	T3S2	T3S3	T3S2R4	OTROS	A	B	C	K'	D	LATITUD	LONGITUD
La Paz	0.00	3	0	3567	0.8	84.5	1.8	7.9	2.0	2.4	0.3	0.1	0.2	85.3	1.8	12.9	0.059	0.525	24.115027	-110.293380
T. Izq. El Sargento	45.00	1	0	1562	0.4	83.0	1.4	11.1	2.6	1.2	0.3	0.0	0.0	83.4	1.4	15.2	0.071	0.506	23.982541	-109.994644
T. Izq. El Sargento	45.00	3	0	1685	0.6	85.7	1.4	8.8	2.1	1.2	0.2	0.0	0.0	86.3	1.4	12.3	0.077	0.512	23.981474	-109.991198
Ensenada de Muertos	57.50	1	0	300	1.1	87.1	0.7	7.5	2.5	0.8	0.3	0.0	0.0	88.2	0.7	11.1	0.093	0.504	24.003271	-109.842529

25 CARR: Libramiento de La Paz

CLAVE: 03004

RUTA: BCS

AÑO: 2013

LUGAR	ESTACION				CLASIFICACION VEHICULAR EN PORCIENTO										COORDENADAS					
	KM	TE	SC	TDPA	M	A	B	C2	C3	T3S2	T3S3	T3S2R4	OTROS	A	B	C	K'	D	LATITUD	LONGITUD
T. C. Cabo San Lucas - La Paz	0.00	3	0	13748	2.3	83.9	1.2	5.2	1.9	2.7	1.6	1.0	0.2	86.2	1.2	12.6	0.057	0.532	24.107720	-110.312019
T. C. La Paz - Cd. Insurgentes	10.00																			

26 CARR: Libramiento Norte de La Paz

CLAVE: 03006

RUTA: BCS

AÑO: 2013

LUGAR	ESTACION				CLASIFICACION VEHICULAR EN PORCIENTO										COORDENADAS					
	KM	TE	SC	TDPA	M	A	B	C2	C3	T3S2	T3S3	T3S2R4	OTROS	A	B	C	K'	D	LATITUD	LONGITUD
T. C. La Paz - Pichilingue	0.00	3	0	2464	0.9	60.4	1.5	8.6	9.5	11.2	4.3	2.7	0.9	61.3	1.5	37.2	0.080	0.549	24.232055	-110.300479
T. C. La Paz - Ensenada de Muertos	18.80	1	0	9886	2.1	64.8	2.0	7.7	8.7	8.1	3.6	2.1	0.9	66.9	2.0	31.1	0.061	0.501	24.123252	-110.291564
T. C. La Paz - Ensenada de Muertos	18.80	3	0	6404	2.0	75.7	2.1	6.6	2.3	5.0	3.2	2.0	1.1	77.7	2.1	20.2	0.065	0.515	24.119936	-110.297351
T. C. Cabo San Lucas - La Paz	20.70	1	0	9862	1.9	80.7	1.6	5.6	2.5	4.5	1.5	0.8	0.9	82.6	1.6	15.8	0.076	0.530	24.113700	-110.308943

BAJA CALIFORNIA SUR

27 CARR: Ramal a Benito Juárez

CLAVE: 03405

RUTA: BCS

AÑO: 2013

LUGAR	ESTACION				CLASIFICACION VEHICULAR EN PORCIENTO													COORDENADAS		
	KM	TE	SC	TDPA	M	A	B	C2	C3	T3S2	T3S3	T3S2R4	OTROS	A	B	C	K'	D	LATITUD	LONGITUD
T. C. Cd. Constitución - Puerto San Carlos	0.00	3	0	756	0.4	86.2	2.5	8.9	0.8	1.2	0.0	0.0	0.0	86.6	2.5	10.9	0.097	0.503	25.038077	-111.770270
Benito Juárez	11.50	1	0	772	2.4	86.2	2.2	5.4	1.2	2.1	0.2	0.1	0.2	88.6	2.2	9.2	0.082	0.521	25.110084	-111.821079

28 CARR: Ramal a Ejido Ley Federal de Aguas Número Cuatro

CLAVE: 03007

RUTA: BCS

AÑO: 2013

LUGAR	ESTACION				CLASIFICACION VEHICULAR EN PORCIENTO													COORDENADAS		
	KM	TE	SC	TDPA	M	A	B	C2	C3	T3S2	T3S3	T3S2R4	OTROS	A	B	C	K'	D	LATITUD	LONGITUD
T. C. La Paz - Cd. Insurgentes	0.00	3	0	818	0.1	81.6	0.4	12.3	2.6	2.5	0.5	0.0	0.0	81.7	0.4	17.9	0.078	0.534	25.198616	-111.748927
Ejido Ley Federal de Aguas Número Cuatro	19.20																			

29 CARR: Ramal a El Carrizal

CLAVE: 03050

RUTA: BCS

AÑO: 2013

LUGAR	ESTACION				CLASIFICACION VEHICULAR EN PORCIENTO													COORDENADAS		
	KM	TE	SC	TDPA	M	A	B	C2	C3	T3S2	T3S3	T3S2R4	OTROS	A	B	C	K'	D	LATITUD	LONGITUD
T. C. San Pedro - Cabo San Lucas	0.00	3	0	492	1.3	90.5	0.5	5.6	0.9	1.2	0.0	0.0	0.0	91.8	0.5	7.7	0.075	0.501	23.833183	-110.249635
Carrizal	10.00																			

30 CARR: Ramal a Guerrero Negro

CLAVE: 03395

RUTA: BCS

AÑO: 2013

LUGAR	ESTACION				CLASIFICACION VEHICULAR EN PORCIENTO													COORDENADAS		
	KM	TE	SC	TDPA	M	A	B	C2	C3	T3S2	T3S3	T3S2R4	OTROS	A	B	C	K'	D	LATITUD	LONGITUD
T. C. Santa Rosalía - Guerrero Negro	0.00	3	0	2836	0.5	83.1	1.7	9.5	2.0	2.5	0.6	0.0	0.1	83.6	1.7	14.7	0.068	0.506	27.967438	-114.017635
Guerrero Negro	4.50																			

31 CARR: Ramal a La Ribera

CLAVE: 03406

RUTA: BCS

AÑO: 2013

LUGAR	ESTACION				CLASIFICACION VEHICULAR EN PORCIENTO													COORDENADAS		
	KM	TE	SC	TDPA	M	A	B	C2	C3	T3S2	T3S3	T3S2R4	OTROS	A	B	C	K'	D	LATITUD	LONGITUD
T. C. Cabo San Lucas - La Paz	0.00	3	0	1365	0.7	87.7	1.6	8.4	0.6	0.8	0.2	0.0	0.0	88.4	1.6	10.0	0.083	0.504	23.547708	-109.660842
La Ribera	12.00																			

BAJA CALIFORNIA SUR

32 CARR: Ramal a Melitón Albáñez CLAVE: 03407 RUTA: BCS AÑO: 2013

LUGAR	ESTACION				CLASIFICACION VEHICULAR EN PORCIENTO														COORDENADAS	
	KM	TE	SC	TDPA	M	A	B	C2	C3	T3S2	T3S3	T3S2R4	OTROS	A	B	C	K'	D	LATITUD	LONGITUD
T. C. San Pedro - Cabo San Lucas Melitón Albáñez	0.00	3	0	548	0.9	83.6	4.2	6.9	2.2	1.8	0.3	0.0	0.1	84.5	4.2	11.3	0.089	0.528	23.653092	-110.226425
	23.50																			

33 CARR: Ramal a Santa Catarina CLAVE: 03052 RUTA: BCS AÑO: 2013

LUGAR	ESTACION				CLASIFICACION VEHICULAR EN PORCIENTO														COORDENADAS	
	KM	TE	SC	TDPA	M	A	B	C2	C3	T3S2	T3S3	T3S2R4	OTROS	A	B	C	K'	D	LATITUD	LONGITUD
T. C. Cabo San Lucas - La Paz Santa Catarina	0.00	3	0	1848	1.7	79.7	1.5	8.0	6.1	2.2	0.7	0.0	0.1	81.4	1.5	17.1	0.064	0.509	23.136890	-109.702029
	1.00																			

34 CARR: Ramal a Bahía de Tortugas CLAVE: 03397 RUTA: MEX-001-BCS AÑO: 2013

LUGAR	ESTACION				CLASIFICACION VEHICULAR EN PORCIENTO														COORDENADAS	
	KM	TE	SC	TDPA	M	A	B	C2	C3	T3S2	T3S3	T3S2R4	OTROS	A	B	C	K'	D	LATITUD	LONGITUD
T. C. Santa Rosalía - Guerrero Negro Vizcaino	0.00	3	0	6819	0.2	79.6	3.0	10.8	1.0	4.5	0.3	0.2	0.4	79.8	3.0	17.2	0.069	0.504	27.646545	-113.387697
Bahía de Tortugas	6.00	3	0	1257	1.3	75.1	5.8	13.1	1.0	2.7	0.5	0.0	0.5	76.4	5.8	17.8	0.065	0.528	27.642523	-113.462273
	198.00																			

35 CARR: Ramal a Ejido Ley Federal de Aguas Número Dos CLAVE: 03050 RUTA: BCS-MEX-001 AÑO: 2013

LUGAR	ESTACION				CLASIFICACION VEHICULAR EN PORCIENTO														COORDENADAS	
	KM	TE	SC	TDPA	M	A	B	C2	C3	T3S2	T3S3	T3S2R4	OTROS	A	B	C	K'	D	LATITUD	LONGITUD
T. C. Cd. Insurgentes - Loreto Ejido Ley Federal de Aguas Número Dos	0.00	3	0	739	0.4	80.5	1.4	9.9	2.9	4.3	0.6	0.0	0.0	80.9	1.4	17.7	0.092	0.512	25.300835	-111.651005
	10.00																			

36 CARR: Ramal a Ley Federal de Aguas Número Cinco CLAVE: 03407 RUTA: BCS-MEX-001 AÑO: 2013

LUGAR	ESTACION				CLASIFICACION VEHICULAR EN PORCIENTO														COORDENADAS	
	KM	TE	SC	TDPA	M	A	B	C2	C3	T3S2	T3S3	T3S2R4	OTROS	A	B	C	K'	D	LATITUD	LONGITUD
Cd. Constitución	0.00	3	1	736	1.7	85.8	0.6	9.4	1.7	0.6	0.2	0.0	0.0	87.5	0.6	11.9	0.103	0.531	25.039276	-111.619954
Cd. Constitución	0.00	3	2	652	1.4	84.9	0.6	10.2	1.9	0.7	0.3	0.0	0.0	86.3	0.6	13.1	0.103	0.531	25.039283	-111.619952
Ley Federal de Aguas Número Cinco	17.50																			

BAJA CALIFORNIA SUR

37 CARR: Ramal a San Juan de La Costa

CLAVE: 03403

RUTA: BCS-163-MEX-001

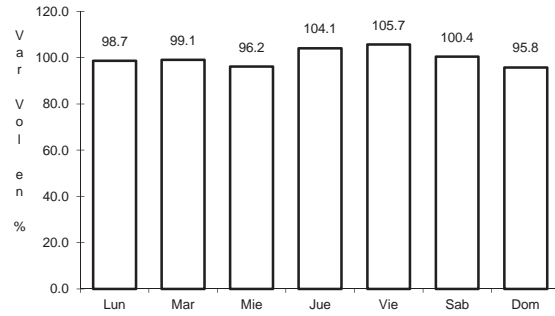
AÑO: 2013

LUGAR	ESTACION				CLASIFICACION VEHICULAR EN PORCIENTO														COORDENADAS	
	KM	TE	SC	TDPA	M	A	B	C2	C3	T3S2	T3S3	T3S2R4	OTROS	A	B	C	K'	D	LATITUD	LONGITUD
T. C. La Paz - Cd. Insurgentes	0.00	3	0	1036	0.7	76.2	0.5	18.3	2.2	1.6	0.5	0.0	0.0	76.9	0.5	22.6	0.069	0.514	24.121821	-110.438577
Puerto Cajete	23.00	3	0	653	0.5	73.1	0.5	21.2	2.5	1.6	0.6	0.0	0.0	73.6	0.5	25.9	0.075	0.501	24.251480	-110.609255
San Juan de La Costa	40.70	1	0	536	0.5	74.3	0.4	18.7	4.2	1.6	0.0	0.1	0.2	74.8	0.4	24.8	0.088	0.503	24.369180	-110.689588

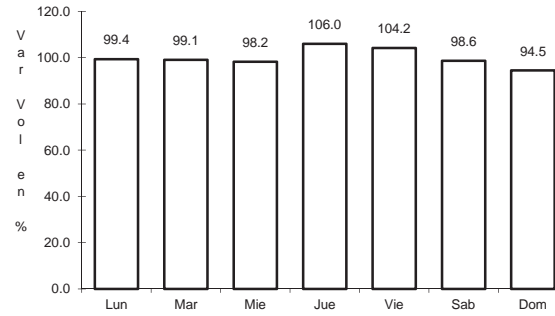
1 CARR: Cabo San Lucas - La Paz

CLAVE: 03102

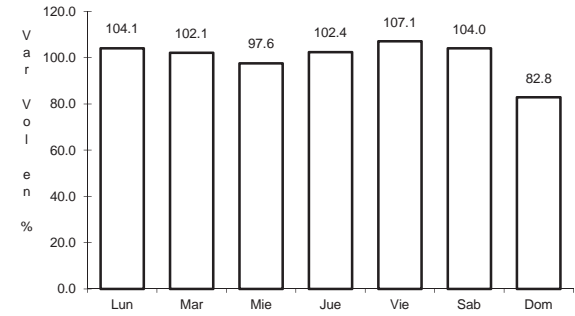
RUTA: MEX-001



Km: 0.00                      Tipo: 3                      Sent: 1



Km: 0.00                      Tipo: 3                      Sent: 2

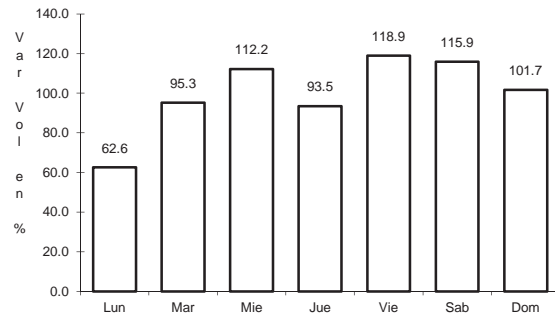


Km: 110.00                      Tipo: 3                      Sent: 0

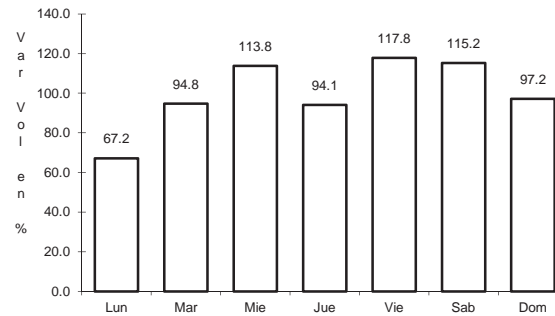
2 CARR: Cd. Constitución - Puerto San Carlos

CLAVE: 03231

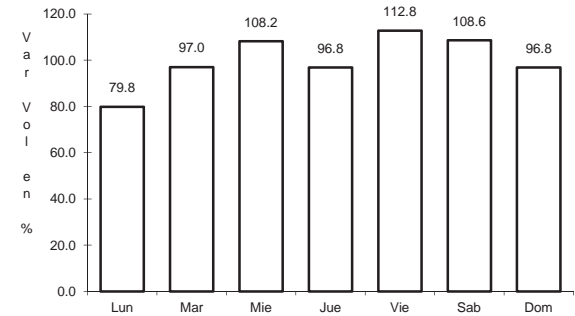
RUTA: MEX-001



Km: 0.00                      Tipo: 3                      Sent: 0



Km: 10.00                      Tipo: 1                      Sent: 0

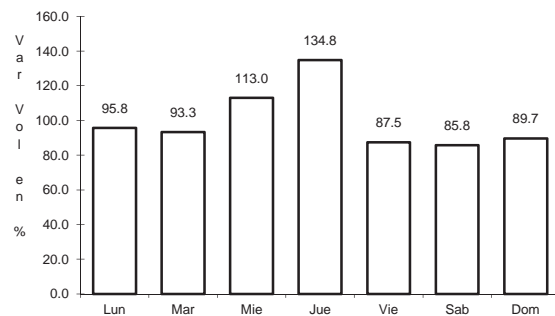


Km: 10.00                      Tipo: 3                      Sent: 0

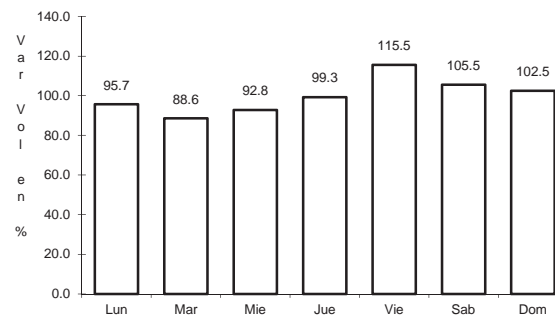
3 CARR: Cd. Insurgentes - Loreto

CLAVE: 03092

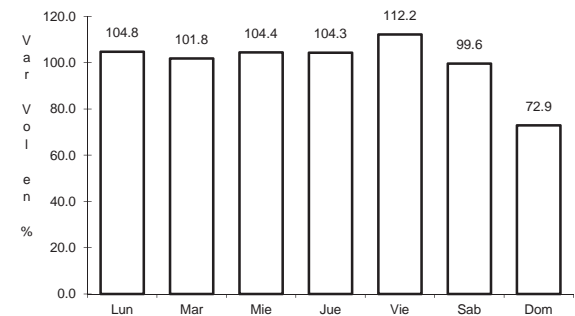
RUTA: MEX-001



Km: 0.00                      Tipo: 3                      Sent: 0



Km: 65.00                      Tipo: 1                      Sent: 0

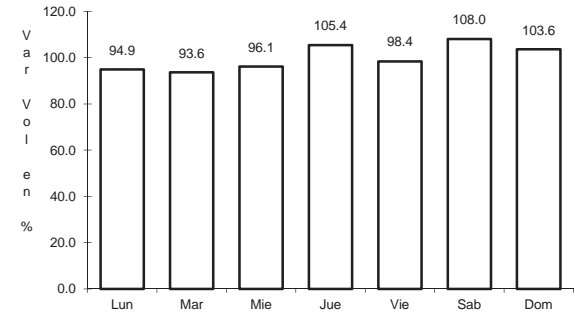
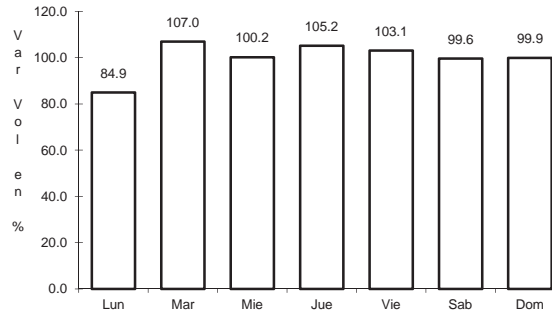
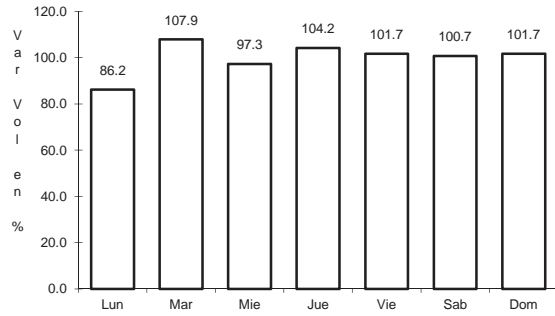


Km: 117.30                      Tipo: 1                      Sent: 0

4 CARR: Ent. Punta Prieta - Guerrero Negro

CLAVE: 00321

RUTA: MEX-001



Km: 0.00      Tipo: 3      Sent: 0

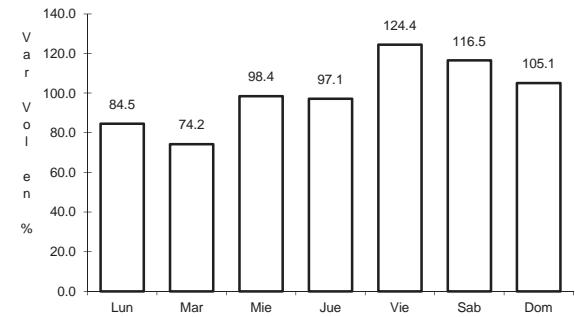
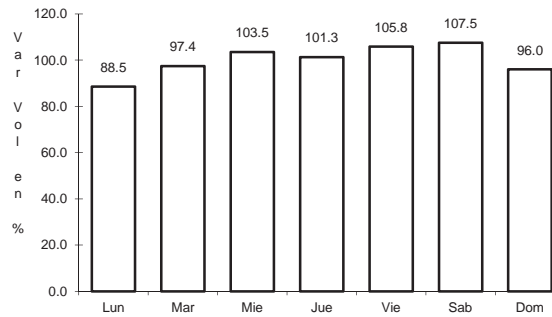
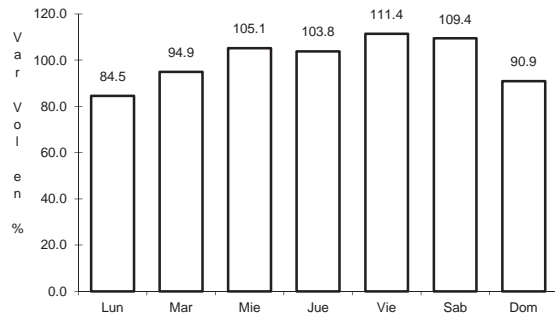
Km: 70.10      Tipo: 3      Sent: 0

Km: 130.00      Tipo: 1      Sent: 0

5 CARR: La Paz - Cd. Insurgentes

CLAVE: 03101

RUTA: MEX-001



Km: 0.00      Tipo: 3      Sent: 1

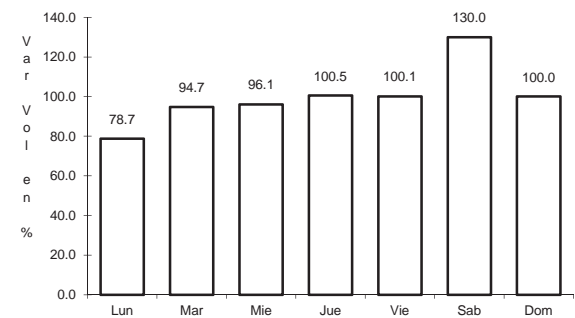
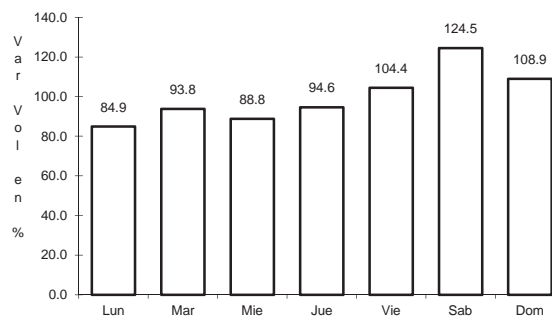
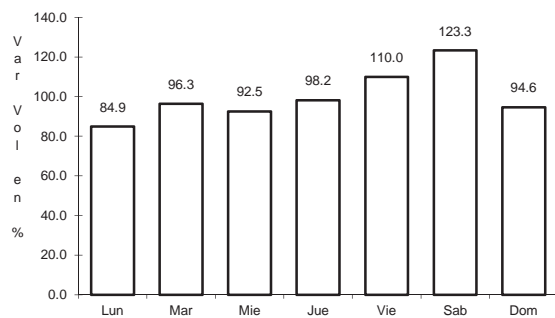
Km: 0.00      Tipo: 3      Sent: 2

Km: 118.20      Tipo: 1      Sent: 0

6 CARR: La Paz - Pichilingue

CLAVE: 03230

RUTA: MEX-001



Km: 0.00      Tipo: 3      Sent: 1

Km: 0.00      Tipo: 3      Sent: 2

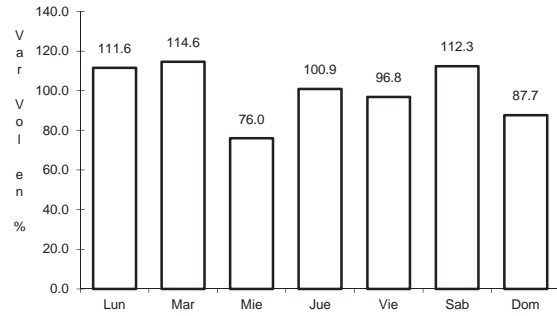
Km: 17.00      Tipo: 1      Sent: 0



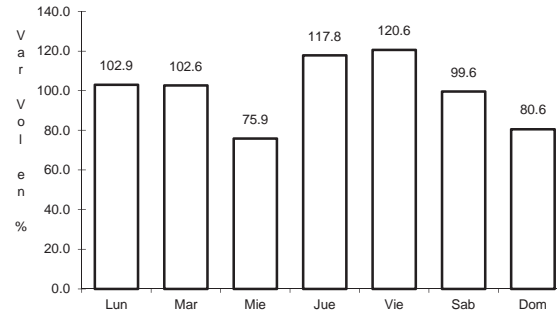
7 CARR: Libramiento de Cabo San Lucas

CLAVE: 03100

RUTA: MEX-001



Km: 0.00                      Tipo: 3                      Sent: 1

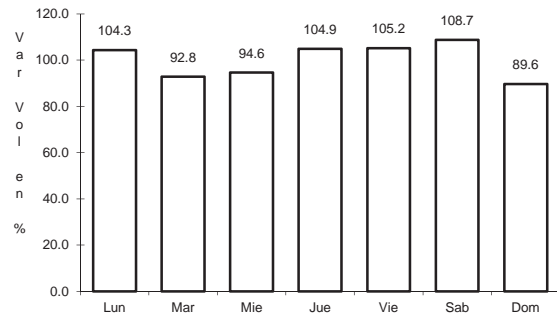


Km: 0.00                      Tipo: 3                      Sent: 2

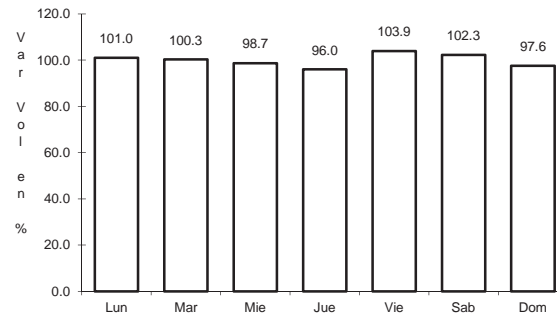
8 CARR: Loreto - Santa Rosalía

CLAVE: 03393

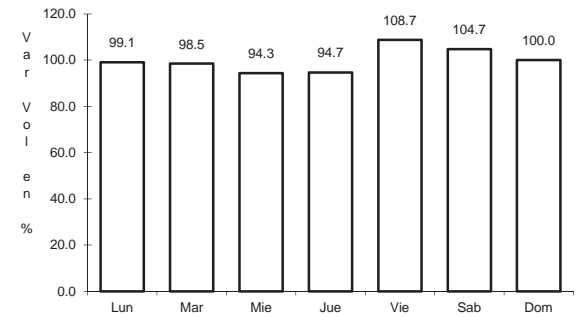
RUTA: MEX-001



Km: 0.00                      Tipo: 3                      Sent: 0



Km: 135.00                      Tipo: 1                      Sent: 0

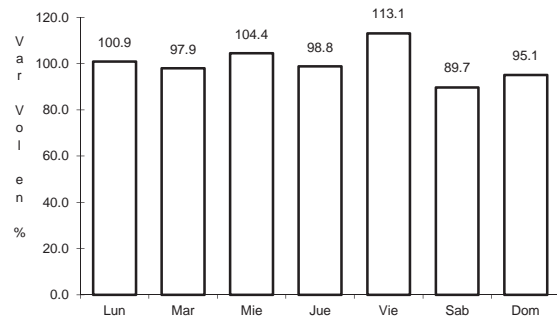


Km: 197.00                      Tipo: 1                      Sent: 0

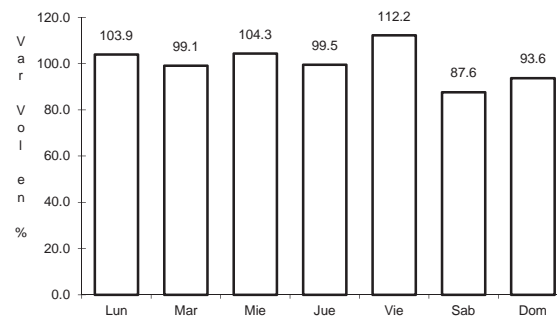
9 CARR: Ramal a Aeropuerto de La Paz

CLAVE: 03396

RUTA: MEX-001



Km: 0.00                      Tipo: 3                      Sent: 1

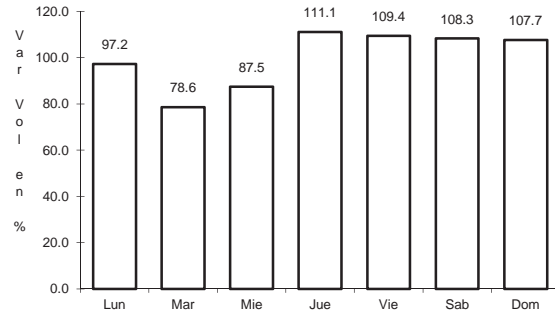


Km: 0.00                      Tipo: 3                      Sent: 2

10 CARR: Ramal a Aeropuerto de Los Cabos

CLAVE: 03394

RUTA: MEX-001



Km: 0.00

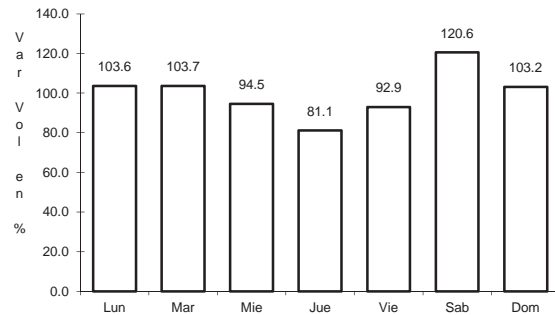
Tipo: 3

Sent: 0

11 CARR: Ramal a Los Paredones

CLAVE: 03407

RUTA: MEX-001



Km: 0.00

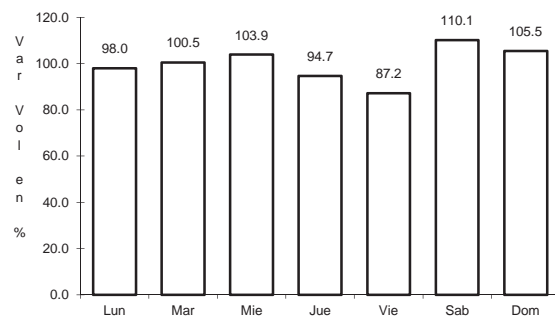
Tipo: 3

Sent: 0

12 CARR: Ramal a Miraflores

CLAVE: 03407

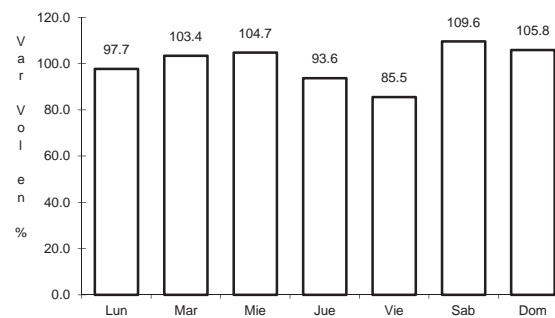
RUTA: MEX-001



Km: 0.00

Tipo: 3

Sent: 1



Km: 0.00

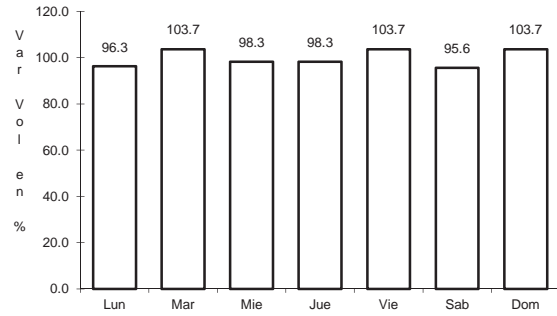
Tipo: 3

Sent: 2

13 CARR: Ramal a Puerto Escondido

CLAVE: 03407

RUTA: MEX-001



Km: 0.00

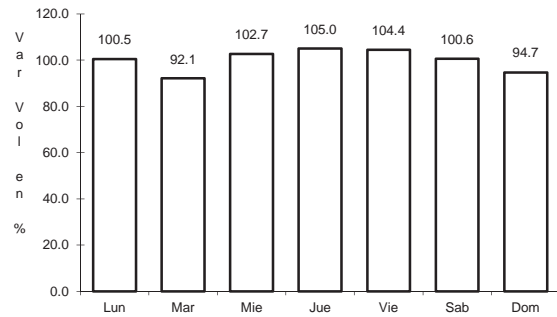
Tipo: 3

Sent: 0

14 CARR: Ramal a San Ignacio

CLAVE: 03413

RUTA: MEX-001



Km: 0.00

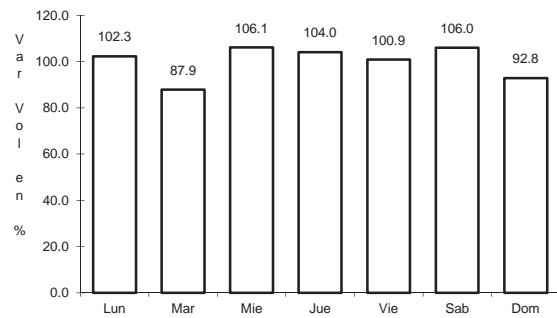
Tipo: 3

Sent: 0

15 CARR: Ramal a Santiago

CLAVE: 03051

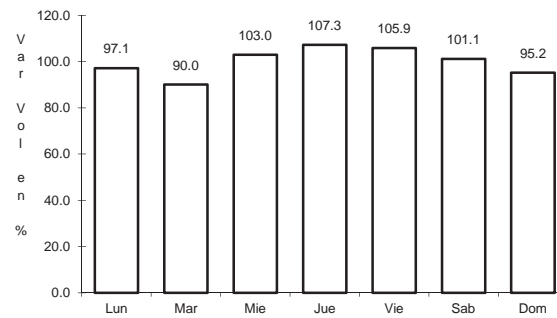
RUTA: MEX-001



Km: 0.00

Tipo: 3

Sent: 1



Km: 0.00

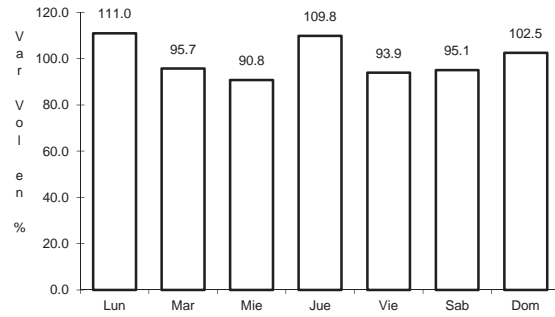
Tipo: 3

Sent: 2

16 CARR: Ramal Aeropista San Ignacio

CLAVE: 03051

RUTA: MEX-001



Km: 0.00

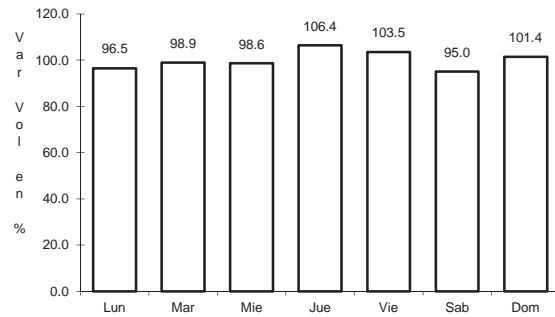
Tipo: 3

Sent: 0

17 CARR: Ramal Aeropista Santa Rosalía

CLAVE: 03051

RUTA: MEX-001



Km: 0.00

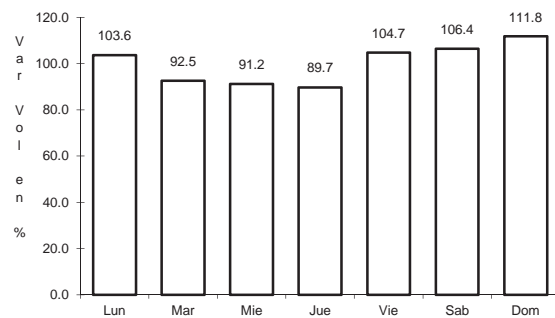
Tipo: 3

Sent: 0

18 CARR: San Pedro - Cabo San Lucas

CLAVE: 03003

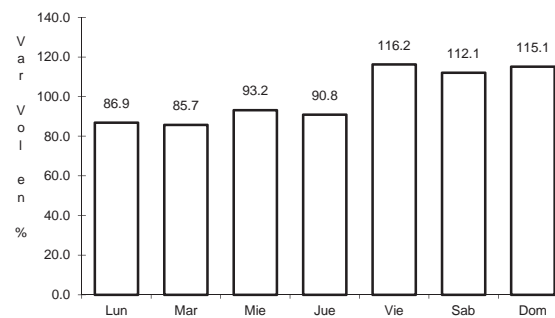
RUTA: MEX-019



Km: 0.00

Tipo: 3

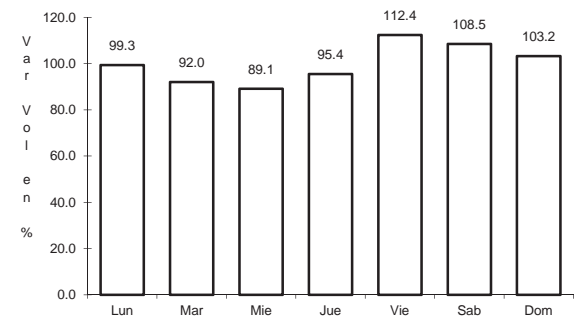
Sent: 1



Km: 0.00

Tipo: 3

Sent: 2



Km: 52.00

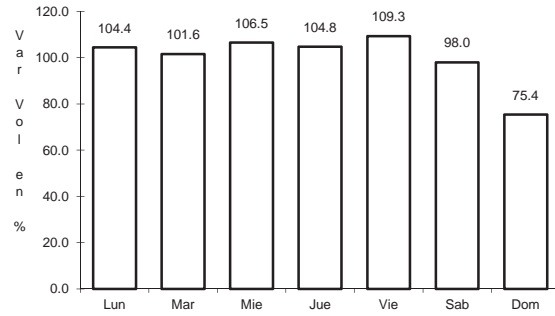
Tipo: 1

Sent: 0

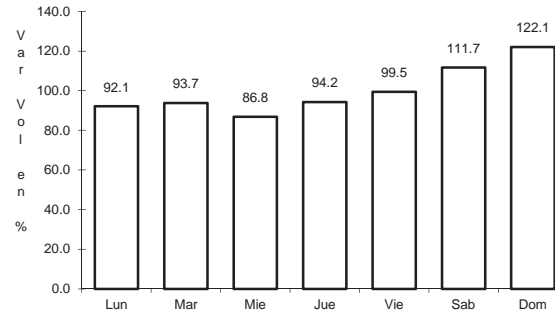
19 CARR: Santa Rosalía - Guerrero Negro

CLAVE: 03095

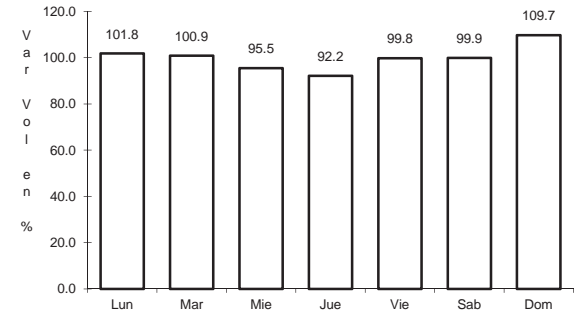
RUTA: MEX-001



Km: 0.00                      Tipo: 3                      Sent: 0



Km: 117.90                      Tipo: 1                      Sent: 0

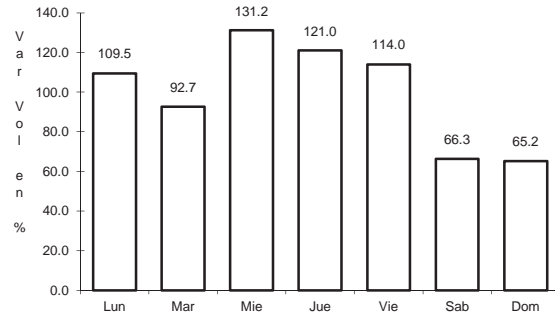


Km: 216.85                      Tipo: 1                      Sent: 0

20 CARR: Libramiento San José del Cabo - Aeropuerto Los Cabos (Cuota)

CLAVE: 03392

RUTA: MEX-001D

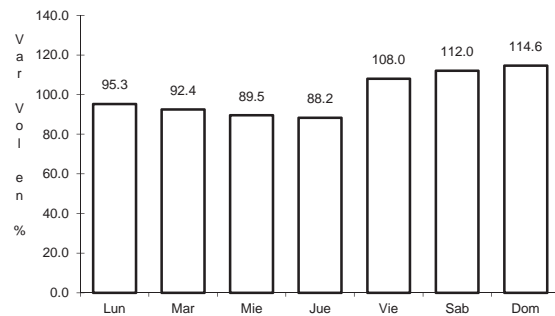


Km: 0.00                      Tipo: 3                      Sent: 0

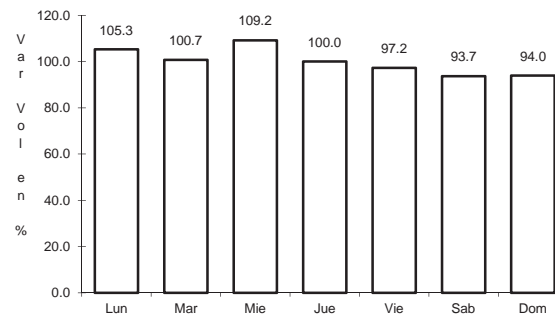
21 CARR: Cd. Insurgentes - La Purísima

CLAVE: 03005

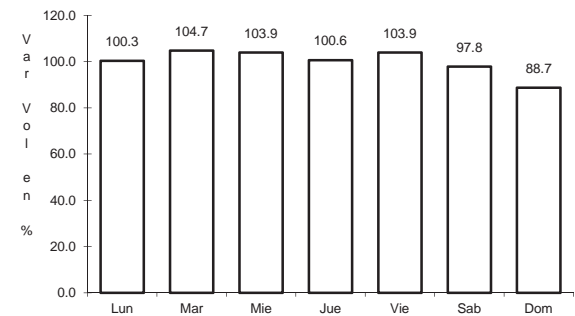
RUTA: BCS-001



Km: 0.00                      Tipo: 3                      Sent: 0



Km: 64.00                      Tipo: 3                      Sent: 0

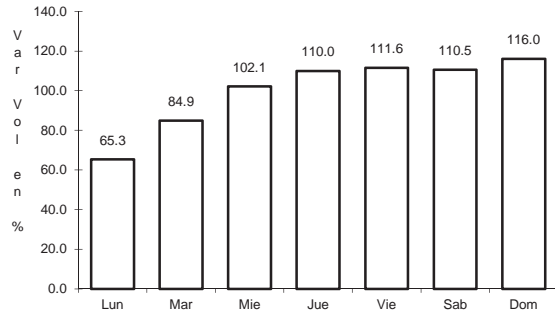


Km: 107.00                      Tipo: 1                      Sent: 0

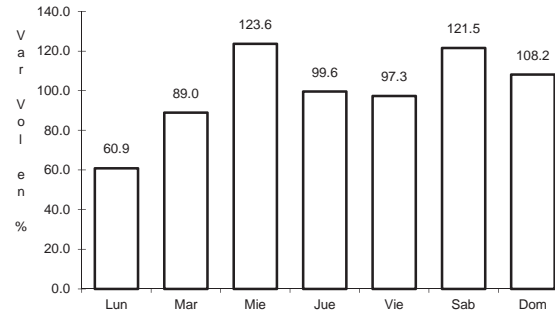
22 CARR: Cd. Insurgentes - Pto. Adolfo López Mateos

CLAVE: 03404

RUTA: BCS



Km: 0.00                      Tipo: 3                      Sent: 0

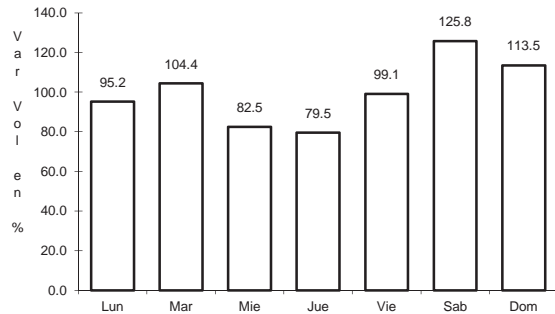


Km: 35.50                      Tipo: 1                      Sent: 0

23 CARR: Ent. Campo Fisher - Punta Abreojos

CLAVE: 03411

RUTA: BCS

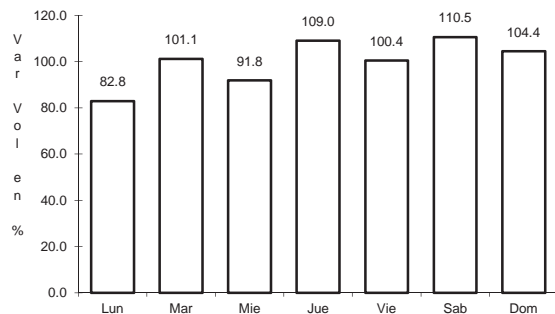


Km: 0.00                      Tipo: 3                      Sent: 0

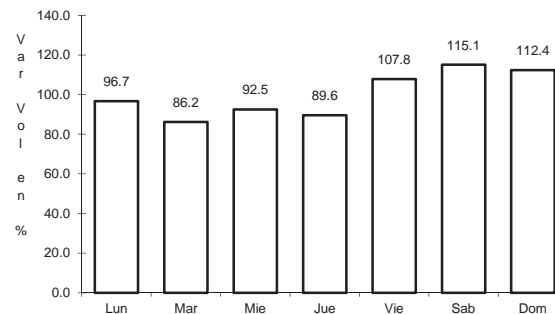
24 CARR: La Paz - Ensenada de Muertos

CLAVE: 03103

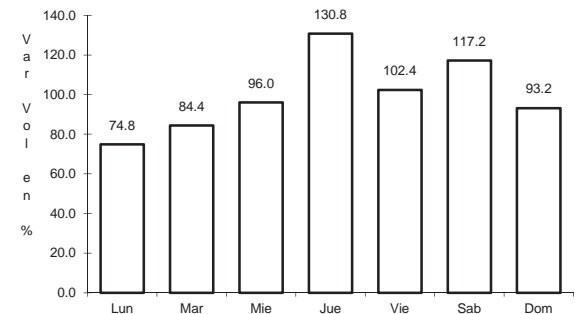
RUTA: BCS-246



Km: 0.00                      Tipo: 3                      Sent: 0



Km: 45.00                      Tipo: 1                      Sent: 0

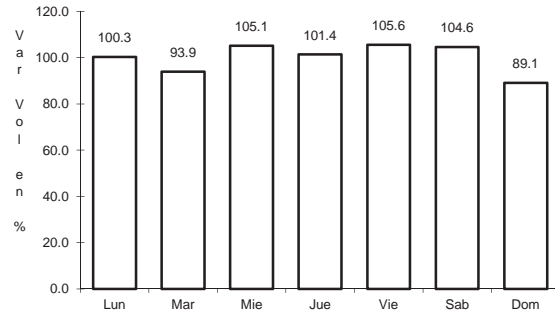


Km: 57.50                      Tipo: 1                      Sent: 0

25 CARR: Libramiento de La Paz

CLAVE: 03004

RUTA: BCS



Km: 0.00

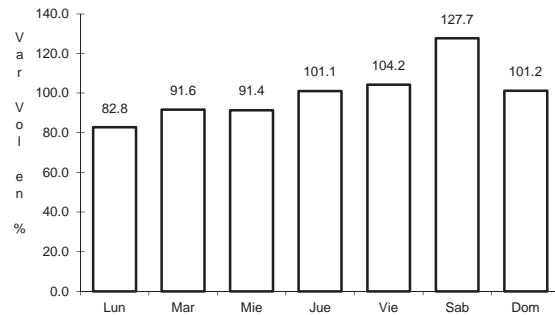
Tipo: 3

Sent: 0

26 CARR: Libramiento Norte de La Paz

CLAVE: 03006

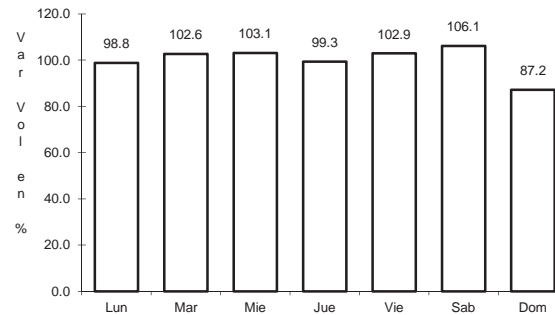
RUTA: BCS



Km: 0.00

Tipo: 3

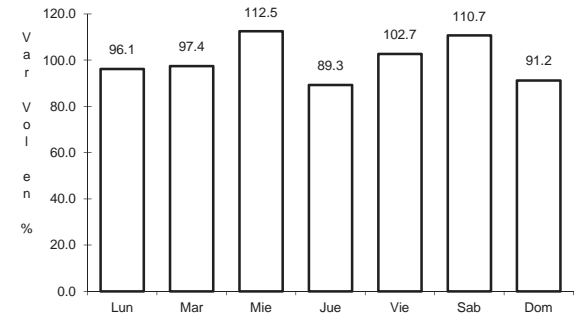
Sent: 0



Km: 18.80

Tipo: 1

Sent: 0



Km: 20.70

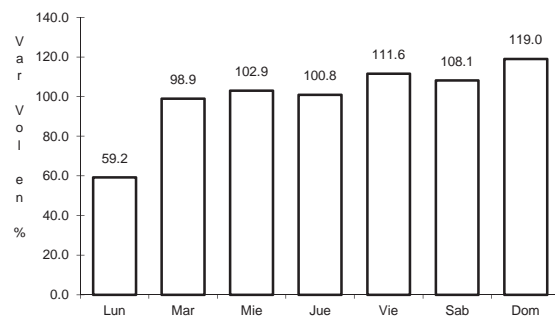
Tipo: 1

Sent: 0

27 CARR: Ramal a Benito Juárez

CLAVE: 03405

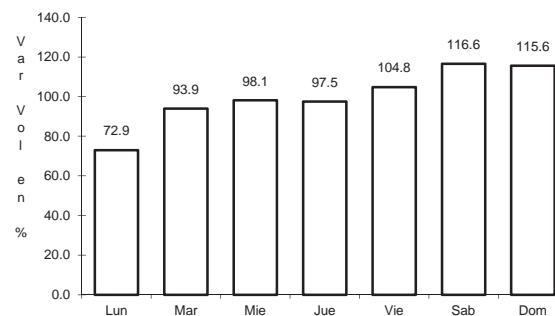
RUTA: BCS



Km: 0.00

Tipo: 3

Sent: 0



Km: 11.50

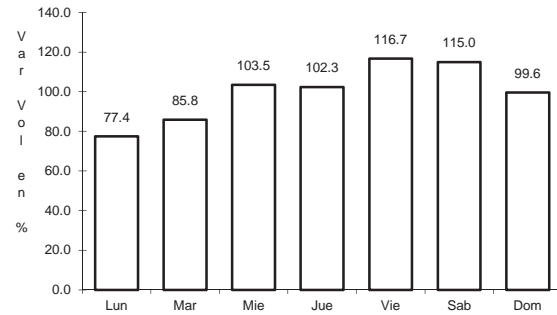
Tipo: 1

Sent: 0

28 CARR: Ramal a Ejido Ley Federal de Aguas Número Cuatro

CLAVE: 03007

RUTA: BCS



Km: 0.00

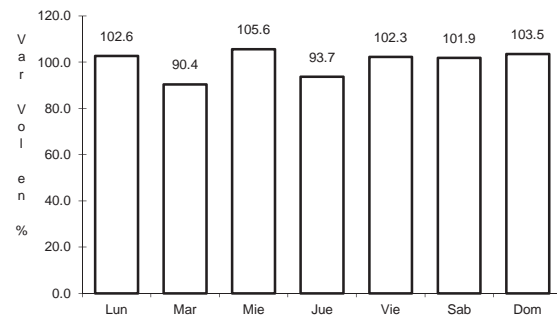
Tipo: 3

Sent: 0

29 CARR: Ramal a El Carrizal

CLAVE: 03050

RUTA: BCS



Km: 0.00

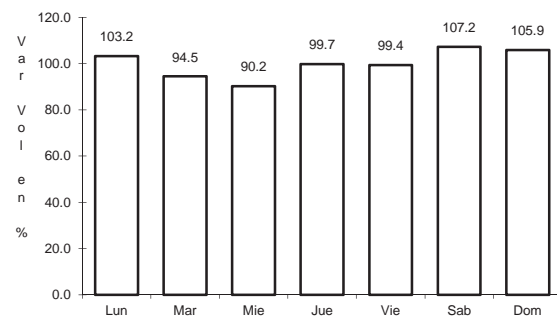
Tipo: 3

Sent: 0

30 CARR: Ramal a Guerrero Negro

CLAVE: 03395

RUTA: BCS



Km: 0.00

Tipo: 3

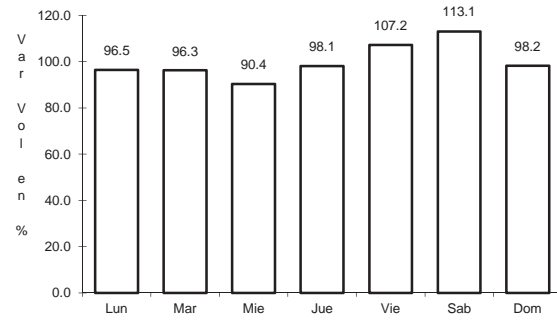
Sent: 0



31 CARR: Ramal a La Ribera

CLAVE: 03406

RUTA: BCS



Km: 0.00

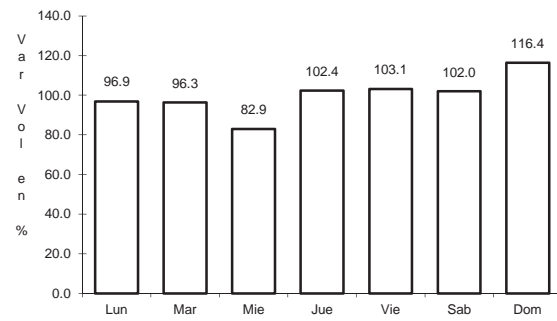
Tipo: 3

Sent: 0

32 CARR: Ramal a Melitón Albáñez

CLAVE: 03407

RUTA: BCS



Km: 0.00

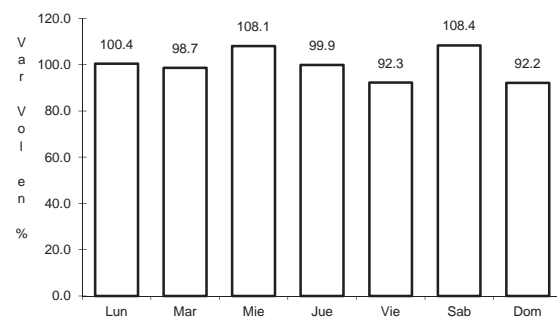
Tipo: 3

Sent: 0

33 CARR: Ramal a Santa Catarina

CLAVE: 03052

RUTA: BCS



Km: 0.00

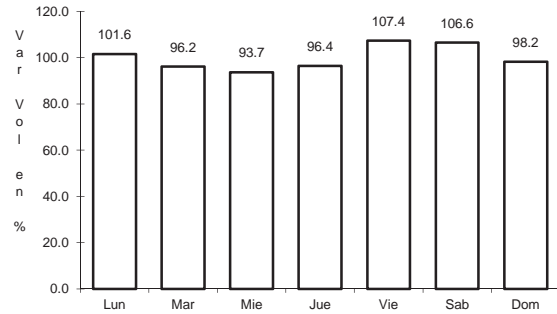
Tipo: 3

Sent: 0

34 CARR: Ramal a Bahía de Tortugas

CLAVE: 03397

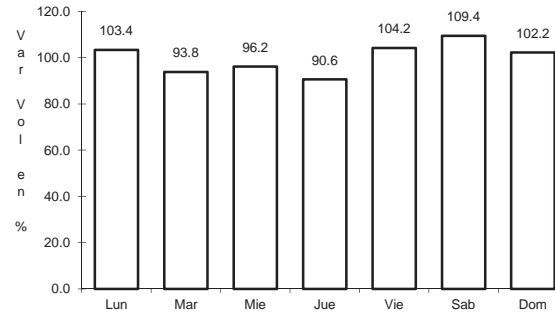
RUTA: MEX-001-BCS



Km: 0.00

Tipo: 3

Sent: 0



Km: 6.00

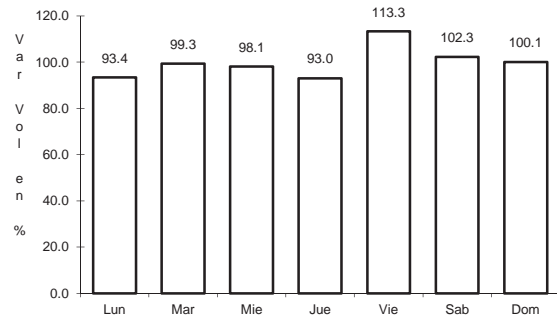
Tipo: 3

Sent: 0

35 CARR: Ramal a Ejido Ley Federal de Aguas Número Dos

CLAVE: 03050

RUTA: BCS-MEX-001



Km: 0.00

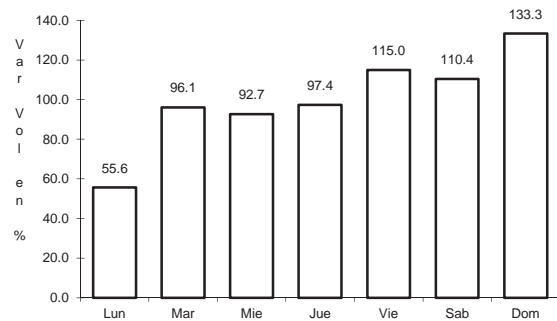
Tipo: 3

Sent: 0

36 CARR: Ramal a Ley Federal de Aguas Número Cinco

CLAVE: 03407

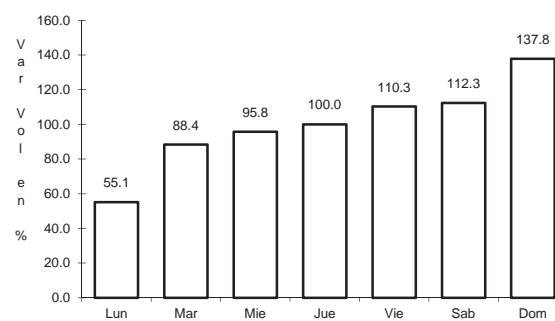
RUTA: BCS-MEX-001



Km: 0.00

Tipo: 3

Sent: 1

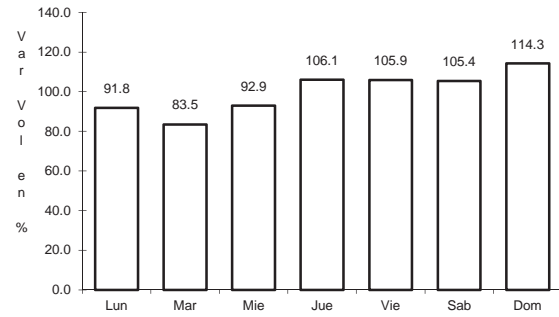


Km: 0.00

Tipo: 3

Sent: 2

37 CARR: Ramal a San Juan de La Costa

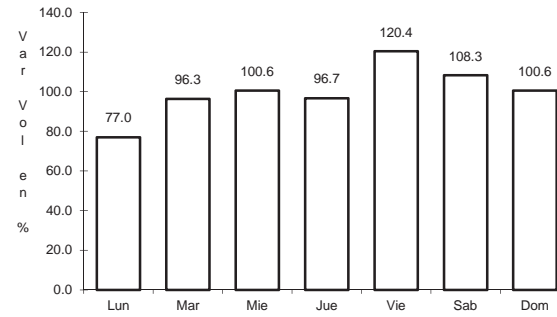


Km: 0.00

Tipo: 3

Sent: 0

CLAVE: 03403

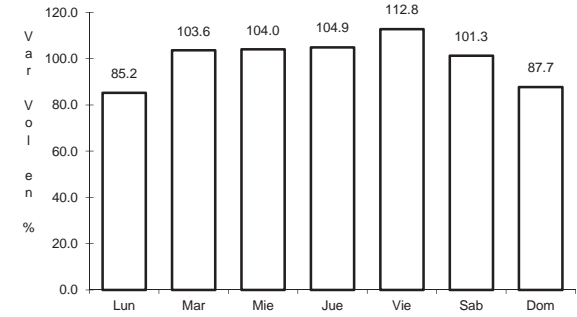


Km: 23.00

Tipo: 3

Sent: 0

RUTA: BCS-163-MEX-001



Km: 40.70

Tipo: 1

Sent: 0